



wwPDB EM Validation Summary Report ⓘ

Apr 22, 2024 – 04:11 pm BST

PDB ID : 6ZZ6
EMDB ID : EMD-11585
Title : Cryo-EM structure of S.cerevisiae cohesin-Scs2-DNA complex
Authors : Lee, B.-G.; Gonzalez Llamazares, A.; Collier, J.; Nasmyth, K.A.; Lowe, J.
Deposited on : 2020-08-04
Resolution : 3.40 Å(reported)

This is a wwPDB EM Validation Summary Report for a publicly released PDB entry.

We welcome your comments at validation@mail.wwpdb.org

A user guide is available at

<https://www.wwpdb.org/validation/2017/EMValidationReportHelp>

with specific help available everywhere you see the ⓘ symbol.

The types of validation reports are described at

<http://www.wwpdb.org/validation/2017/FAQs#types>.

The following versions of software and data (see [references ⓘ](#)) were used in the production of this report:

EMDB validation analysis : 0.0.1.dev92
Mogul : 1.8.4, CSD as541be (2020)
MolProbity : 4.02b-467
buster-report : 1.1.7 (2018)
Percentile statistics : 20191225.v01 (using entries in the PDB archive December 25th 2019)
MapQ : 1.9.13
Ideal geometry (proteins) : Engh & Huber (2001)
Ideal geometry (DNA, RNA) : Parkinson et al. (1996)
Validation Pipeline (wwPDB-VP) : 2.36.2

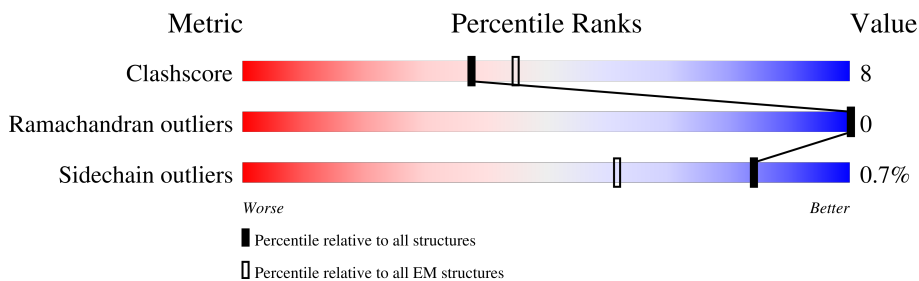
1 Overall quality at a glance

The following experimental techniques were used to determine the structure:

ELECTRON MICROSCOPY

The reported resolution of this entry is 3.40 Å.

Percentile scores (ranging between 0-100) for global validation metrics of the entry are shown in the following graphic. The table shows the number of entries on which the scores are based.



Metric	Whole archive (#Entries)	EM structures (#Entries)
Clashscore	158937	4297
Ramachandran outliers	154571	4023
Sidechain outliers	154315	3826

The table below summarises the geometric issues observed across the polymeric chains and their fit to the map. The red, orange, yellow and green segments of the bar indicate the fraction of residues that contain outliers for ≥ 3 , 2, 1 and 0 types of geometric quality criteria respectively. A grey segment represents the fraction of residues that are not modelled. The numeric value for each fraction is indicated below the corresponding segment, with a dot representing fractions $\leq 5\%$. The upper red bar (where present) indicates the fraction of residues that have poor fit to the EM map (all-atom inclusion $< 40\%$). The numeric value is given above the bar.

Mol	Chain	Length	Quality of chain
1	A	360	
2	B	423	
3	C	83	
4	D	1493	
5	F	34	
6	G	34	

2 Entry composition [i](#)

There are 8 unique types of molecules in this entry. The entry contains 16597 atoms, of which 0 are hydrogens and 0 are deuteriums.

In the tables below, the AltConf column contains the number of residues with at least one atom in alternate conformation and the Trace column contains the number of residues modelled with at most 2 atoms.

- Molecule 1 is a protein called Structural maintenance of chromosomes protein 1,Structural maintenance of chromosomes protein 1,Structural maintenance of chromosomes protein 1.

Mol	Chain	Residues	Atoms					AltConf	Trace
			Total	C	N	O	S		
1	A	360	2871	1831	487	547	6	0	0

There is a discrepancy between the modelled and reference sequences:

Chain	Residue	Modelled	Actual	Comment	Reference
A	1158	GLN	GLU	conflict	UNP P32908

- Molecule 2 is a protein called Structural maintenance of chromosomes protein 3,Structural maintenance of chromosomes protein 3,Structural maintenance of chromosomes protein 3.

Mol	Chain	Residues	Atoms					AltConf	Trace
			Total	C	N	O	S		
2	B	423	3368	2119	592	646	11	0	0

There are 3 discrepancies between the modelled and reference sequences:

Chain	Residue	Modelled	Actual	Comment	Reference
B	0	GLY	-	expression tag	UNP P47037
B	1	PRO	-	expression tag	UNP P47037
B	1155	GLN	GLU	conflict	UNP P47037

- Molecule 3 is a protein called Sister chromatid cohesion protein 1,Sister chromatid cohesion protein 1,Sister chromatid cohesion protein 1.

Mol	Chain	Residues	Atoms					AltConf	Trace
			Total	C	N	O	S		
3	C	83	639	409	105	123	2	0	0

- Molecule 4 is a protein called Sister chromatid cohesion protein 2.

Mol	Chain	Residues	Atoms					AltConf	Trace
			Total	C	N	O	S		
4	D	1050	8264	5331	1388	1509	36	0	0

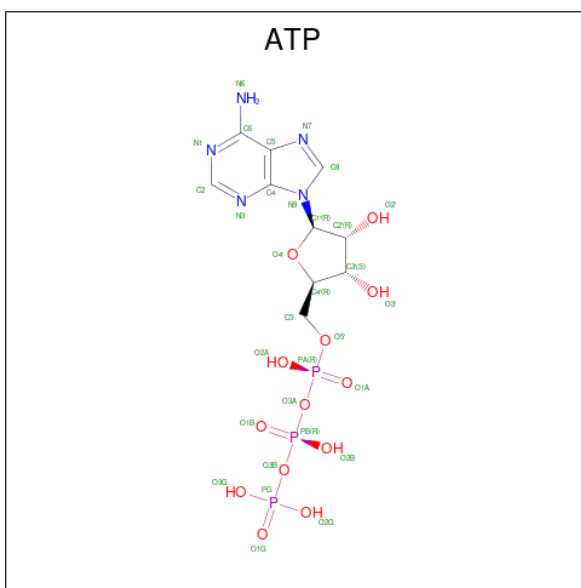
- Molecule 5 is a DNA chain called DNA (34-MER).

Mol	Chain	Residues	Atoms					AltConf	Trace
			Total	C	N	O	P		
5	F	34	714	340	170	170	34	0	0

- Molecule 6 is a DNA chain called DNA (34-MER).

Mol	Chain	Residues	Atoms					AltConf	Trace
			Total	C	N	O	P		
6	G	34	677	337	68	238	34	0	0

- Molecule 7 is ADENOSINE-5'-TRIPHOSPHATE (three-letter code: ATP) (formula: $C_{10}H_{16}N_5O_{13}P_3$).



Mol	Chain	Residues	Atoms					AltConf
			Total	C	N	O	P	
7	A	1	31	10	5	13	3	0
7	B	1	31	10	5	13	3	0

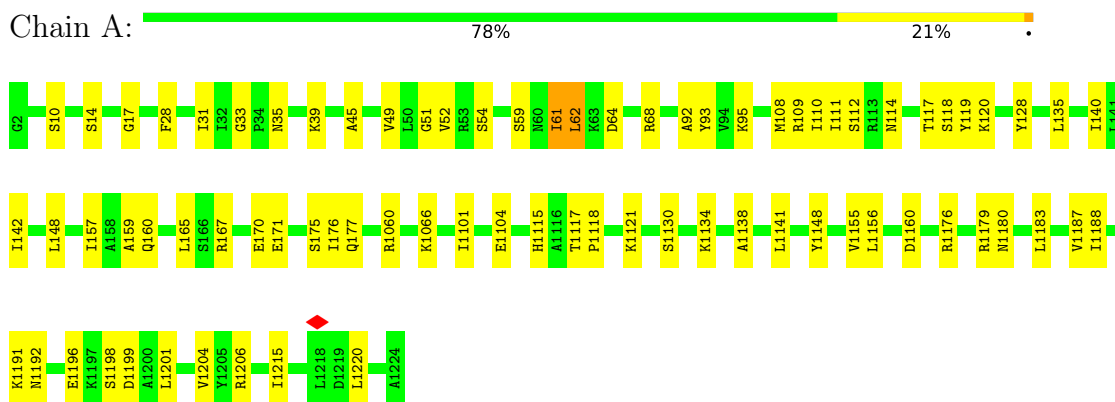
- Molecule 8 is MAGNESIUM ION (three-letter code: MG) (formula: Mg).

Mol	Chain	Residues	Atoms		AltConf
8	A	1	Total 1	Mg 1	0
8	B	1	Total 1	Mg 1	0

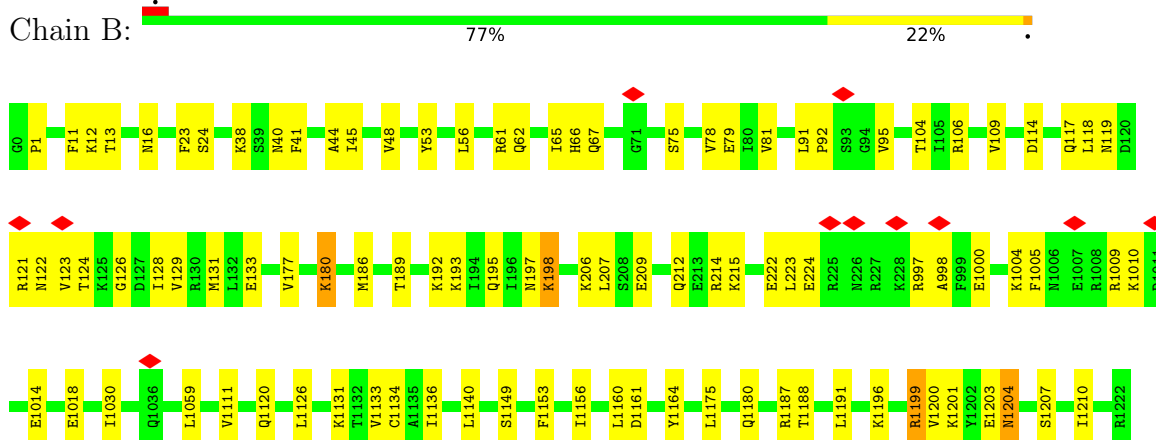
3 Residue-property plots [i](#)

These plots are drawn for all protein, RNA, DNA and oligosaccharide chains in the entry. The first graphic for a chain summarises the proportions of the various outlier classes displayed in the second graphic. The second graphic shows the sequence view annotated by issues in geometry and atom inclusion in map density. Residues are color-coded according to the number of geometric quality criteria for which they contain at least one outlier: green = 0, yellow = 1, orange = 2 and red = 3 or more. A red diamond above a residue indicates a poor fit to the EM map for this residue (all-atom inclusion < 40%). Stretches of 2 or more consecutive residues without any outlier are shown as a green connector. Residues present in the sample, but not in the model, are shown in grey.

- Molecule 1: Structural maintenance of chromosomes protein 1,Structural maintenance of chromosomes protein 1,Structural maintenance of chromosomes protein 1

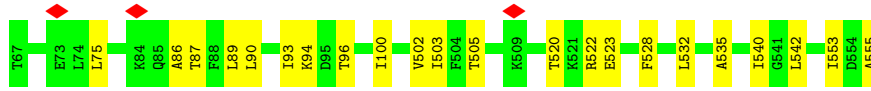


- Molecule 2: Structural maintenance of chromosomes protein 3,Structural maintenance of chromosomes protein 3,Structural maintenance of chromosomes protein 3



- Molecule 3: Sister chromatid cohesion protein 1,Sister chromatid cohesion protein 1,Sister chromatid cohesion protein 1

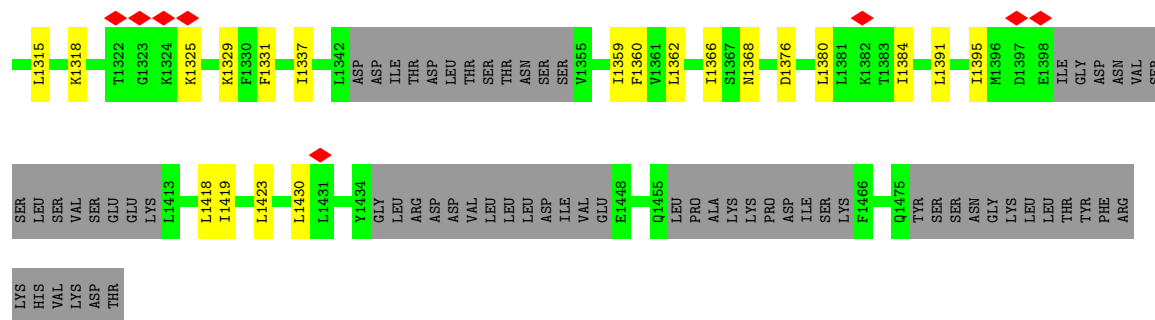




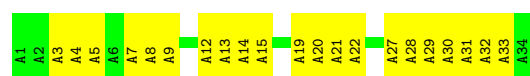
• Molecule 4: Sister chromatid cohesion protein 2



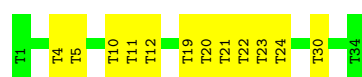
MET	TYR	PRO	GLY	LYS	ASP	LYS	ASN	ASN	ILE	PRO	GLY	ARG	LEU	ILE	T93	K94	D95	T96	I100	V602	I503	F504	T505	K509	T520	K521	R522	E523	F528	L532	A535	I540	G541	L542	I553	D554	A555						
ASN	ILE	ASN	VAL	LEU	GLY	THR	ALA	ASN	ASN	THR	THR	THR	THR	THR	THR	THR	THR	THR	THR	THR	THR	THR	THR	THR	THR	THR	THR	THR	THR	THR	THR	THR	THR	THR	THR	THR	THR	THR	THR				
HIS	LYS	GLY	LEU	ASN	ASP	SER	ILE	SER	ILE	GLY	VAL	LYS	VAL	VAL	VAL	VAL	VAL	VAL	VAL	VAL	VAL	VAL	VAL	VAL	VAL	VAL	VAL	VAL	VAL	VAL	VAL	VAL	VAL	VAL	VAL	VAL	VAL	VAL	VAL				
ALA	GLU	GLN	TYR	L370	TRR	ASN	ASN	ASP	ASP	LEU	LEU	LEU	LEU	LEU	LEU	LEU	LEU	LEU	LEU	LEU	LEU	LEU	LEU	LEU	LEU	LEU	LEU	LEU	LEU	LEU	LEU	LEU	LEU	LEU	LEU	LEU	LEU	LEU	LEU				
K362	PHE	SER	SER	SER	SER	LYS	LYS	LYS	LYS	LYS	LYS	LYS	LYS	LYS	LYS	LYS	LYS	LYS	LYS	LYS	LYS	LYS	LYS	LYS	LYS	LYS	LYS	LYS	LYS	LYS	LYS	LYS	LYS	LYS	LYS	LYS	LYS	LYS	LYS				
S368	D369	L370	L371	K372	N373	T495	M496	GLU	GLU	GLU	GLU	GLU	GLU	GLU	GLU	GLU	GLU	GLU	GLU	GLU	GLU	GLU	GLU	GLU	GLU	GLU	GLU	GLU	GLU	GLU	GLU	GLU	GLU	GLU	GLU	GLU	GLU	GLU	GLU				
R473	L474	D475	L476	T495	M496	D497	T498	L499	L500	K505	Y512	D515	V518	S527	P528	Q529	V532	L398	L402	G411	E415	L418	R428	L429	Q430	K431	R434	K435	V436	GLY	ASN	Q439	D445	F446	M458	M466	LYS						
I597	Y611	Y615	K616	C617	R618	A621	L630	L633	L634	ILE	LEU	LEU	GLU	GLU	TYR	THR	LYS	ASP	ALA	LYS	GLU	L647	K662	ASP	GLY	GLY	LEU	GLY	PRO	GLU	LEU	GLU	GLU	GLU	GLU	GLU	GLU	GLU					
K740	E741	I742	I743	H744	L759	I764	Y772	N776	D781	D782	S783	I784	R787	K788	H789	I793	N794	E795	K796	M797	Y798	D799	E800	T801	K817	T825	L834	N835	R836	D846	Q847	P848	E849	Y861	V865	A866	T867	M868	D877	N881	F882	N886	
K887	E888	I898	T899	H900	I904	Q911	K912	I913	V914	E915	L916	SER	ASP	THR	ASN	ASN	GLU	GLU	LYS	ASN	I927	T944	V945	I953	L956	Y959	M960	D963	GLU	GLY	S966	F976	T979	R1001	V1007	R1008	E1009	I1010	D1026	T1027	V1030		
H1049	ASN	GLU	ALA	ALA	ILE	VAL	VAL	ASP	G1059	Q1062	A1072	R1073	K1078	PRO	SER	ASN	ASN	ASP	LYS	ILE	ALA	PHE	LEU	GLN	GLU	G1090	I1097	I1109	T1110	I1113	V1116	A1117	V1118	L1124	R1135	H1139	L1140	E1144	Q1149	I1152	K1153	Y1161	E1168
G1176	N1184	SER	LEU	LYS	LYS	LYS	LYS	THR	ASN	ARG	VAL	PHE	ALA	ASN	ASP	G1203	L1221	L1237	I1238	L1239	K1240	F1241	P1246	I1250	I1254	F1257	L1275	F1276	E1277	V1283	S1288	R1289	G1290	I1295	H1296	Y1297	Y1305	K1308	H1309	D1310	H1311	F1312	



• Molecule 5: DNA (34-MER)



• Molecule 6: DNA (34-MER)



4 Experimental information

Property	Value	Source
EM reconstruction method	SINGLE PARTICLE	Depositor
Imposed symmetry	POINT, Not provided	
Number of particles used	588164	Depositor
Resolution determination method	FSC 0.143 CUT-OFF	Depositor
CTF correction method	PHASE FLIPPING AND AMPLITUDE CORRECTION	Depositor
Microscope	FEI TITAN KRIOS	Depositor
Voltage (kV)	300	Depositor
Electron dose ($e^-/\text{\AA}^2$)	55	Depositor
Minimum defocus (nm)	1500	Depositor
Maximum defocus (nm)	3000	Depositor
Magnification	81000	Depositor
Image detector	GATAN K3 (6k x 4k)	Depositor
Maximum map value	0.173	Depositor
Minimum map value	-0.087	Depositor
Average map value	0.000	Depositor
Map value standard deviation	0.003	Depositor
Recommended contour level	0.016	Depositor
Map size (\AA)	342.40002, 342.40002, 342.40002	wwPDB
Map dimensions	320, 320, 320	wwPDB
Map angles ($^\circ$)	90.0, 90.0, 90.0	wwPDB
Pixel spacing (\AA)	1.07, 1.07, 1.07	Depositor

5 Model quality [i](#)

5.1 Standard geometry [i](#)

Bond lengths and bond angles in the following residue types are not validated in this section: MG, ATP

The Z score for a bond length (or angle) is the number of standard deviations the observed value is removed from the expected value. A bond length (or angle) with $|Z| > 5$ is considered an outlier worth inspection. RMSZ is the root-mean-square of all Z scores of the bond lengths (or angles).

Mol	Chain	Bond lengths		Bond angles	
		RMSZ	# Z >5	RMSZ	# Z >5
1	A	0.27	0/2918	0.42	0/3921
2	B	0.27	0/3411	0.43	0/4575
3	C	0.24	0/642	0.43	0/860
4	D	0.24	0/8393	0.39	1/11337 (0.0%)
5	F	0.48	0/815	0.66	0/1254
6	G	0.56	0/744	1.29	0/1146
All	All	0.29	0/16923	0.51	1/23093 (0.0%)

There are no bond length outliers.

All (1) bond angle outliers are listed below:

Mol	Chain	Res	Type	Atoms	Z	Observed(°)	Ideal(°)
4	D	868	MET	CA-CB-CG	5.21	122.15	113.30

There are no chirality outliers.

There are no planarity outliers.

5.2 Too-close contacts [i](#)

In the following table, the Non-H and H(model) columns list the number of non-hydrogen atoms and hydrogen atoms in the chain respectively. The H(added) column lists the number of hydrogen atoms added and optimized by MolProbity. The Clashes column lists the number of clashes within the asymmetric unit, whereas Symm-Clashes lists symmetry-related clashes.

Mol	Chain	Non-H	H(model)	H(added)	Clashes	Symm-Clashes
1	A	2871	0	2893	55	0
2	B	3368	0	3407	75	0
3	C	639	0	673	21	0
4	D	8264	0	8186	105	0

Continued on next page...

Continued from previous page...

Mol	Chain	Non-H	H(model)	H(added)	Clashes	Symm-Clashes
5	F	714	0	375	17	0
6	G	677	0	400	9	0
7	A	31	0	12	0	0
7	B	31	0	12	3	0
8	A	1	0	0	0	0
8	B	1	0	0	0	0
All	All	16597	0	15958	264	0

The all-atom clashscore is defined as the number of clashes found per 1000 atoms (including hydrogen atoms). The all-atom clashscore for this structure is 8.

The worst 5 of 264 close contacts within the same asymmetric unit are listed below, sorted by their clash magnitude.

Atom-1	Atom-2	Interatomic distance (Å)	Clash overlap (Å)
4:D:916:LEU:HD22	4:D:930:LYS:HD3	1.59	0.83
1:A:1204:VAL:HG12	1:A:1215:ILE:HG12	1.63	0.81
4:D:1257:PHE:HB3	4:D:1312:PHE:HB2	1.69	0.74
2:B:192:LYS:HD2	3:C:90:LEU:HD22	1.72	0.70
2:B:61:ARG:HH12	2:B:114:ASP:HB2	1.58	0.69

There are no symmetry-related clashes.

5.3 Torsion angles [i](#)

5.3.1 Protein backbone [i](#)

In the following table, the Percentiles column shows the percent Ramachandran outliers of the chain as a percentile score with respect to all PDB entries followed by that with respect to all EM entries.

The Analysed column shows the number of residues for which the backbone conformation was analysed, and the total number of residues.

Mol	Chain	Analysed	Favoured	Allowed	Outliers	Percentiles	
1	A	354/360 (98%)	336 (95%)	18 (5%)	0	100	100
2	B	417/423 (99%)	378 (91%)	39 (9%)	0	100	100
3	C	77/83 (93%)	75 (97%)	2 (3%)	0	100	100
4	D	1010/1493 (68%)	978 (97%)	32 (3%)	0	100	100
All	All	1858/2359 (79%)	1767 (95%)	91 (5%)	0	100	100

There are no Ramachandran outliers to report.

5.3.2 Protein sidechains [i](#)

In the following table, the Percentiles column shows the percent sidechain outliers of the chain as a percentile score with respect to all PDB entries followed by that with respect to all EM entries.

The Analysed column shows the number of residues for which the sidechain conformation was analysed, and the total number of residues.

Mol	Chain	Analysed	Rotameric	Outliers	Percentiles	
1	A	314/317 (99%)	312 (99%)	2 (1%)	86	94
2	B	371/376 (99%)	363 (98%)	8 (2%)	52	75
3	C	72/72 (100%)	72 (100%)	0	100	100
4	D	892/1392 (64%)	891 (100%)	1 (0%)	93	98
All	All	1649/2157 (76%)	1638 (99%)	11 (1%)	84	92

5 of 11 residues with a non-rotameric sidechain are listed below:

Mol	Chain	Res	Type
2	B	1199	ARG
2	B	1203	GLU
4	D	1008	ARG
2	B	1204	ASN
2	B	222	GLU

Sometimes sidechains can be flipped to improve hydrogen bonding and reduce clashes. All (3) such sidechains are listed below:

Mol	Chain	Res	Type
2	B	40	ASN
2	B	1125	GLN
2	B	1204	ASN

5.3.3 RNA [i](#)

There are no RNA molecules in this entry.

5.4 Non-standard residues in protein, DNA, RNA chains [i](#)

There are no non-standard protein/DNA/RNA residues in this entry.

5.5 Carbohydrates [i](#)

There are no monosaccharides in this entry.

5.6 Ligand geometry [i](#)

Of 4 ligands modelled in this entry, 2 are monoatomic - leaving 2 for Mogul analysis.

In the following table, the Counts columns list the number of bonds (or angles) for which Mogul statistics could be retrieved, the number of bonds (or angles) that are observed in the model and the number of bonds (or angles) that are defined in the Chemical Component Dictionary. The Link column lists molecule types, if any, to which the group is linked. The Z score for a bond length (or angle) is the number of standard deviations the observed value is removed from the expected value. A bond length (or angle) with $|Z| > 2$ is considered an outlier worth inspection. RMSZ is the root-mean-square of all Z scores of the bond lengths (or angles).

Mol	Type	Chain	Res	Link	Bond lengths			Bond angles		
					Counts	RMSZ	# Z > 2	Counts	RMSZ	# Z > 2
7	ATP	B	2000	-	26,33,33	0.91	1 (3%)	31,52,52	1.62	5 (16%)
7	ATP	A	2000	8	26,33,33	0.93	1 (3%)	31,52,52	1.60	5 (16%)

In the following table, the Chirals column lists the number of chiral outliers, the number of chiral centers analysed, the number of these observed in the model and the number defined in the Chemical Component Dictionary. Similar counts are reported in the Torsion and Rings columns. '-' means no outliers of that kind were identified.

Mol	Type	Chain	Res	Link	Chirals	Torsions	Rings
7	ATP	B	2000	-	-	4/18/38/38	0/3/3/3
7	ATP	A	2000	8	-	5/18/38/38	0/3/3/3

All (2) bond length outliers are listed below:

Mol	Chain	Res	Type	Atoms	Z	Observed(Å)	Ideal(Å)
7	A	2000	ATP	C5-C4	2.49	1.47	1.40
7	B	2000	ATP	C5-C4	2.42	1.47	1.40

The worst 5 of 10 bond angle outliers are listed below:

Mol	Chain	Res	Type	Atoms	Z	Observed(°)	Ideal(°)
7	B	2000	ATP	PA-O3A-PB	-3.93	119.34	132.83
7	B	2000	ATP	PB-O3B-PG	-3.89	119.48	132.83
7	A	2000	ATP	PB-O3B-PG	-3.54	120.68	132.83
7	A	2000	ATP	C3'-C2'-C1'	3.46	106.18	100.98

Continued on next page...

Continued from previous page...

Mol	Chain	Res	Type	Atoms	Z	Observed($^{\circ}$)	Ideal($^{\circ}$)
7	A	2000	ATP	PA-O3A-PB	-3.35	121.32	132.83

There are no chirality outliers.

5 of 9 torsion outliers are listed below:

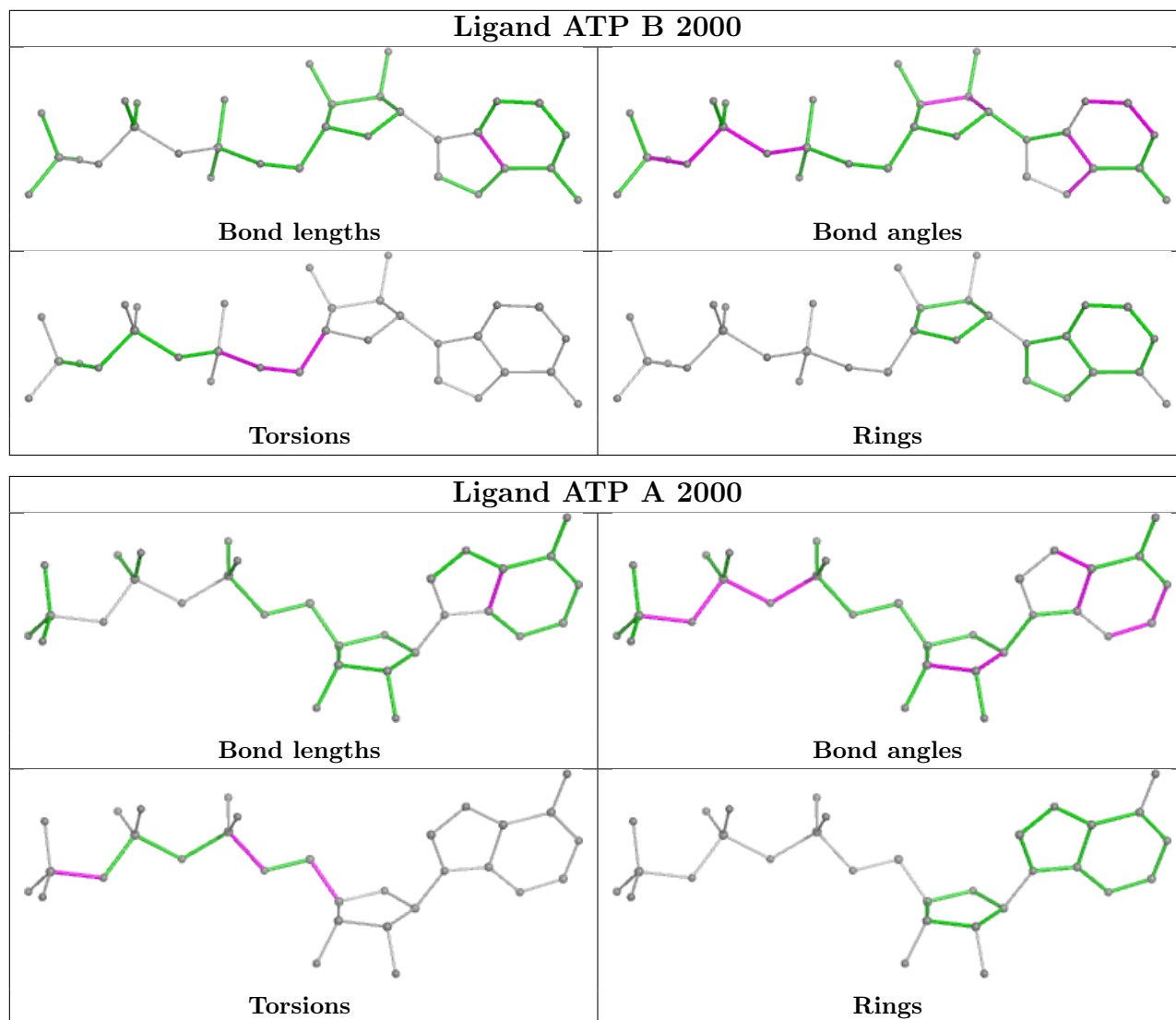
Mol	Chain	Res	Type	Atoms
7	A	2000	ATP	PB-O3B-PG-O2G
7	A	2000	ATP	C5'-O5'-PA-O1A
7	B	2000	ATP	C5'-O5'-PA-O1A
7	B	2000	ATP	O4'-C4'-C5'-O5'
7	B	2000	ATP	C3'-C4'-C5'-O5'

There are no ring outliers.

1 monomer is involved in 3 short contacts:

Mol	Chain	Res	Type	Clashes	Symm-Clashes
7	B	2000	ATP	3	0

The following is a two-dimensional graphical depiction of Mogul quality analysis of bond lengths, bond angles, torsion angles, and ring geometry for all instances of the Ligand of Interest. In addition, ligands with molecular weight > 250 and outliers as shown on the validation Tables will also be included. For torsion angles, if less than 5% of the Mogul distribution of torsion angles is within 10 degrees of the torsion angle in question, then that torsion angle is considered an outlier. Any bond that is central to one or more torsion angles identified as an outlier by Mogul will be highlighted in the graph. For rings, the root-mean-square deviation (RMSD) between the ring in question and similar rings identified by Mogul is calculated over all ring torsion angles. If the average RMSD is greater than 60 degrees and the minimal RMSD between the ring in question and any Mogul-identified rings is also greater than 60 degrees, then that ring is considered an outlier. The outliers are highlighted in purple. The color gray indicates Mogul did not find sufficient equivalents in the CSD to analyse the geometry.



5.7 Other polymers [i](#)

There are no such residues in this entry.

5.8 Polymer linkage issues [i](#)

The following chains have linkage breaks:

Mol	Chain	Number of breaks
3	C	2
2	B	2
1	A	2

The worst 5 of 6 chain breaks are listed below:

Model	Chain	Residue-1	Atom-1	Residue-2	Atom-2	Distance (Å)
1	C	103:LEU	C	502:VAL	N	114.76
1	B	228:LYS	C	997:ARG	N	23.00
1	A	195:SER	C	1044:ALA	N	12.37
1	C	510:SER	C	519:ILE	N	11.03
1	A	71:LEU	C	87:SER	N	10.15

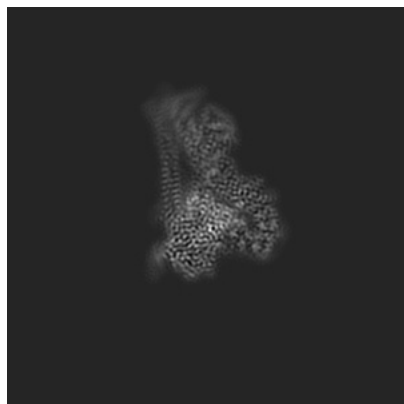
6 Map visualisation [i](#)

This section contains visualisations of the EMDB entry EMD-11585. These allow visual inspection of the internal detail of the map and identification of artifacts.

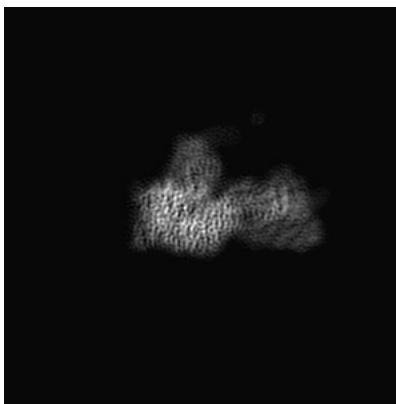
Images derived from a raw map, generated by summing the deposited half-maps, are presented below the corresponding image components of the primary map to allow further visual inspection and comparison with those of the primary map.

6.1 Orthogonal projections [i](#)

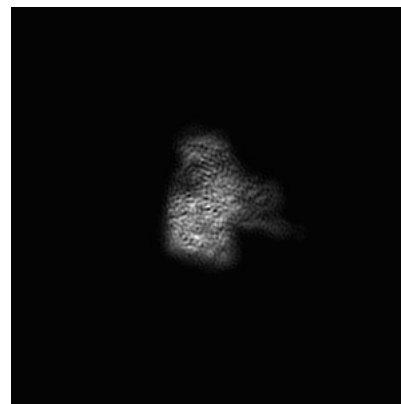
6.1.1 Primary map



X

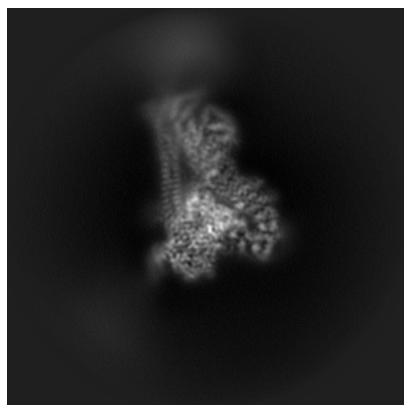


Y

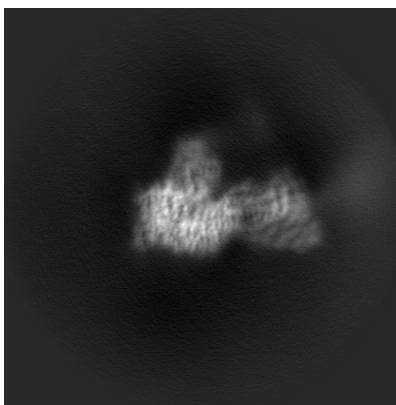


Z

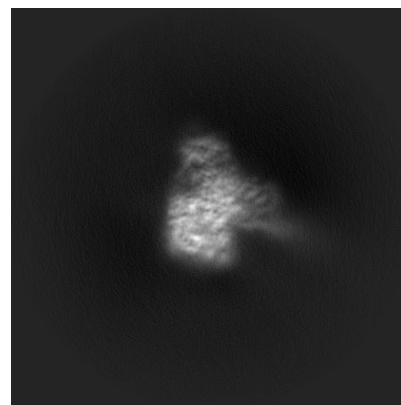
6.1.2 Raw map



X



Y



Z

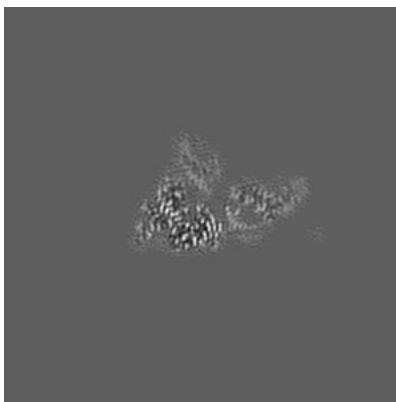
The images above show the map projected in three orthogonal directions.

6.2 Central slices [i](#)

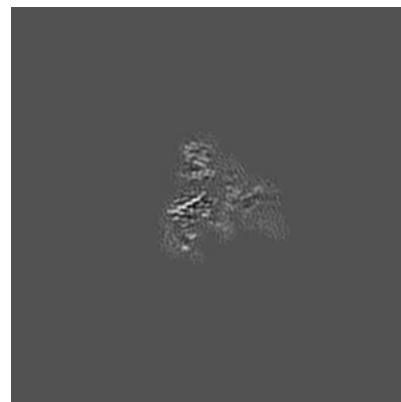
6.2.1 Primary map



X Index: 160

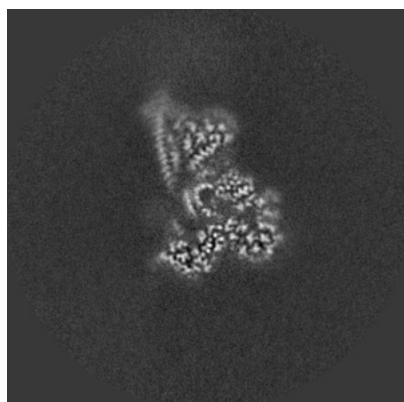


Y Index: 160

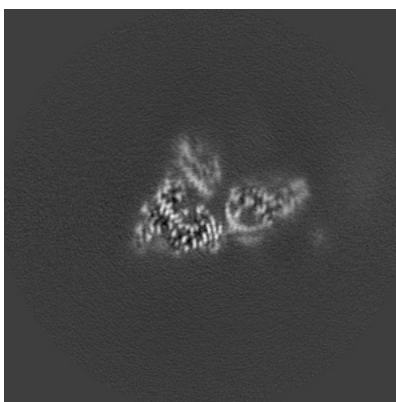


Z Index: 160

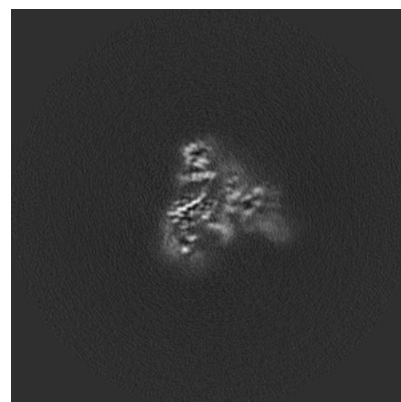
6.2.2 Raw map



X Index: 160



Y Index: 160

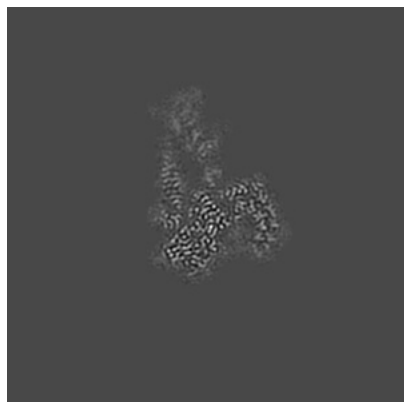


Z Index: 160

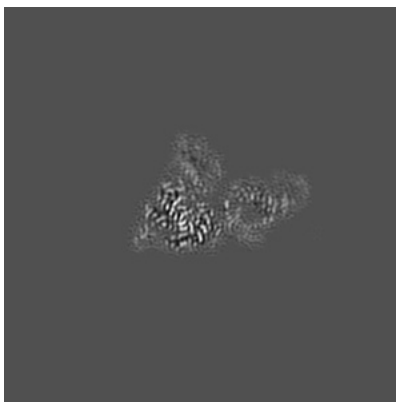
The images above show central slices of the map in three orthogonal directions.

6.3 Largest variance slices [i](#)

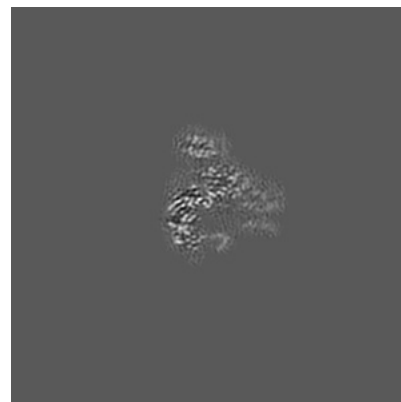
6.3.1 Primary map



X Index: 147

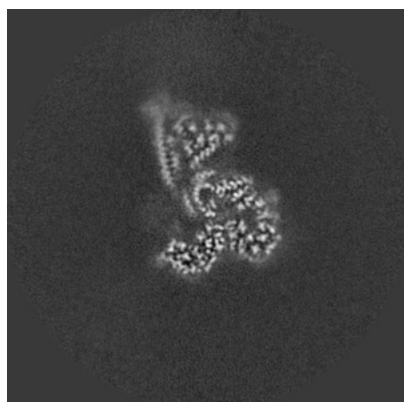


Y Index: 162

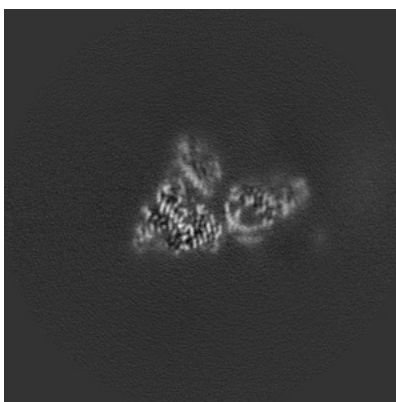


Z Index: 145

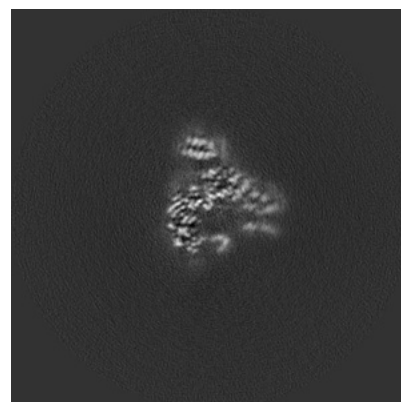
6.3.2 Raw map



X Index: 158



Y Index: 161

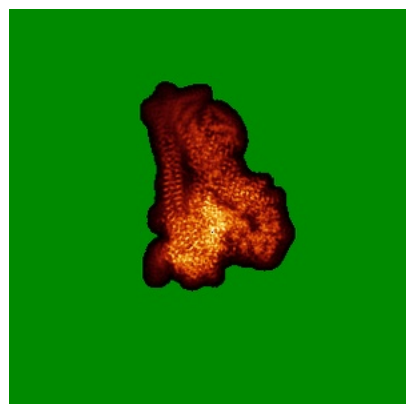


Z Index: 145

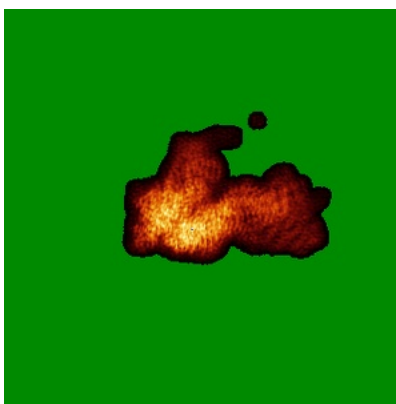
The images above show the largest variance slices of the map in three orthogonal directions.

6.4 Orthogonal standard-deviation projections (False-color) [i](#)

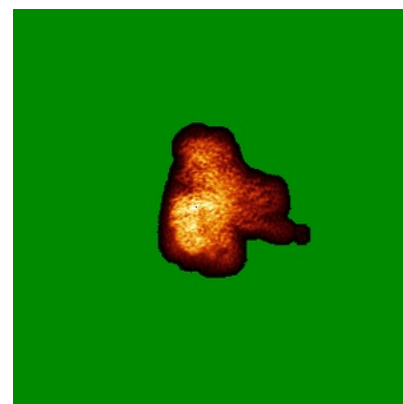
6.4.1 Primary map



X



Y

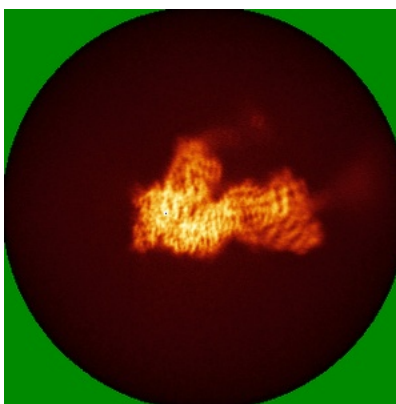


Z

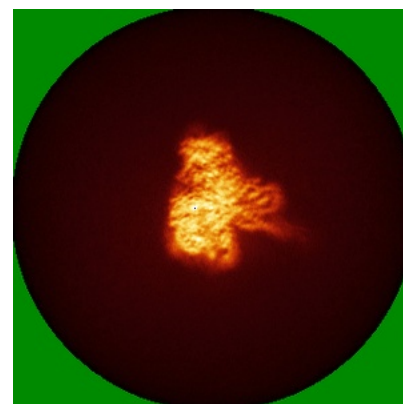
6.4.2 Raw map



X



Y



Z

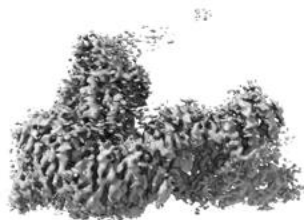
The images above show the map standard deviation projections with false color in three orthogonal directions. Minimum values are shown in green, max in blue, and dark to light orange shades represent small to large values respectively.

6.5 Orthogonal surface views [i](#)

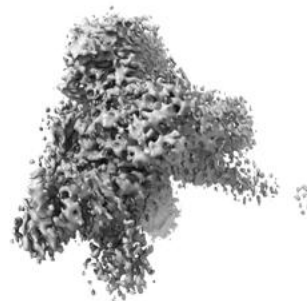
6.5.1 Primary map



X



Y



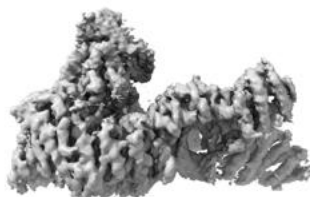
Z

The images above show the 3D surface view of the map at the recommended contour level 0.016. These images, in conjunction with the slice images, may facilitate assessment of whether an appropriate contour level has been provided.

6.5.2 Raw map



X



Y



Z

These images show the 3D surface of the raw map. The raw map's contour level was selected so that its surface encloses the same volume as the primary map does at its recommended contour level.

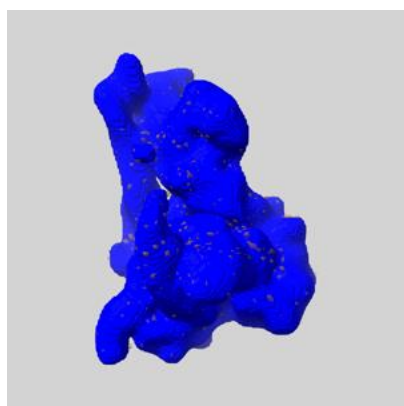
6.6 Mask visualisation [i](#)

This section shows the 3D surface view of the primary map at 50% transparency overlaid with the specified mask at 0% transparency

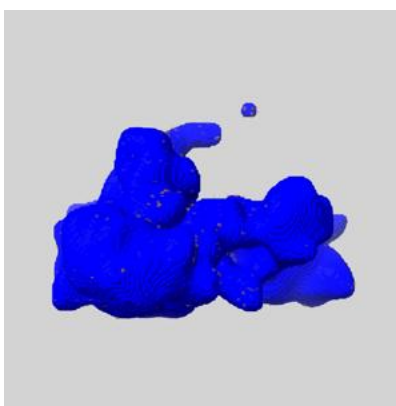
A mask typically either:

- Encompasses the whole structure
- Separates out a domain, a functional unit, a monomer or an area of interest from a larger structure

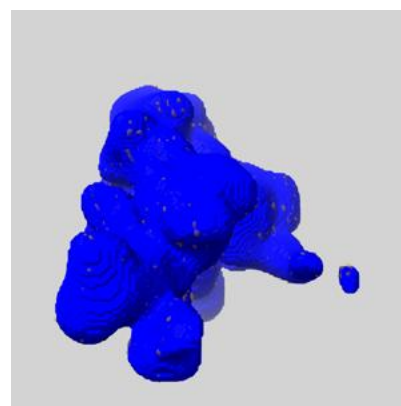
6.6.1 emd_11585_msk_1.map [i](#)



X



Y

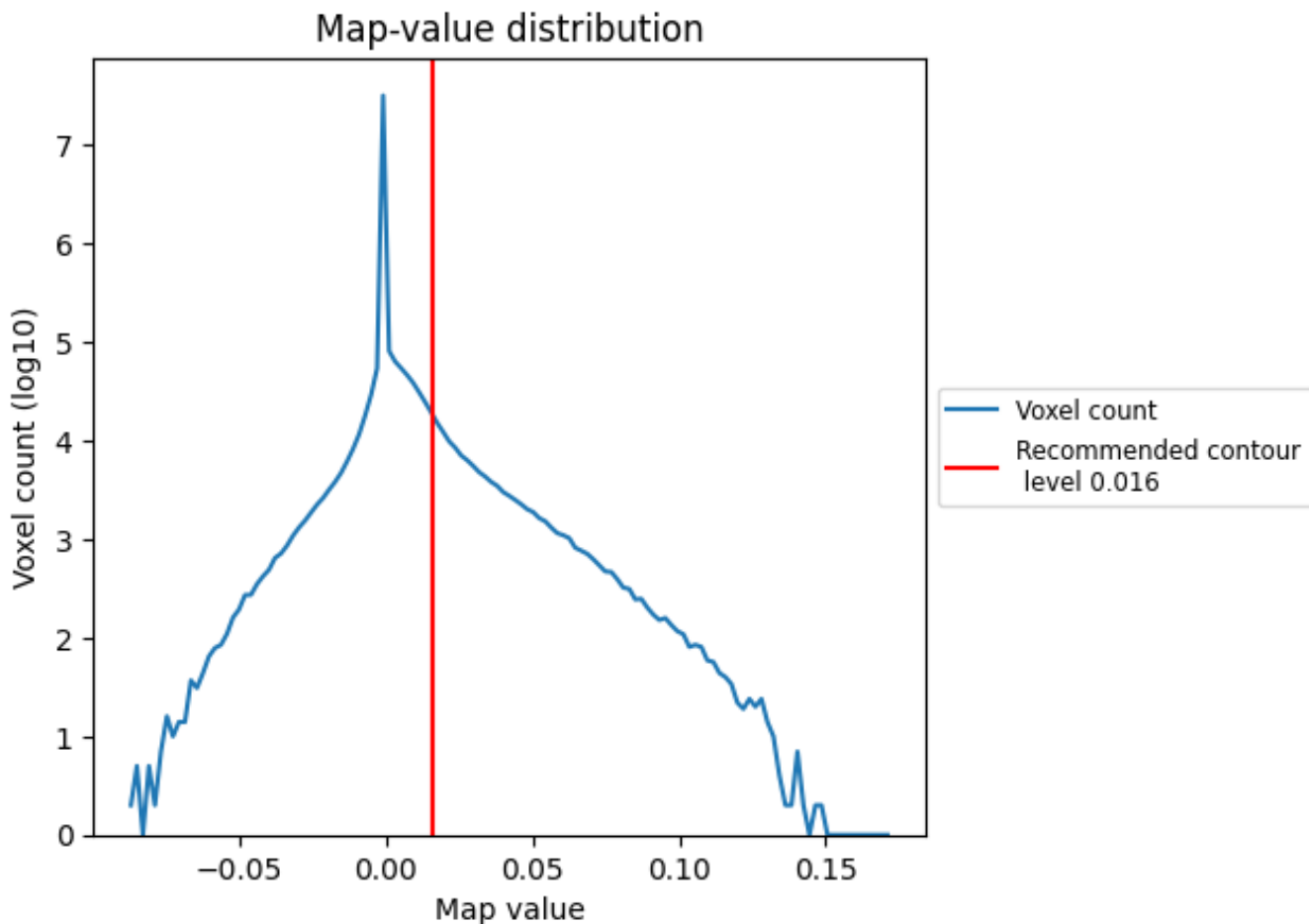


Z

7 Map analysis [i](#)

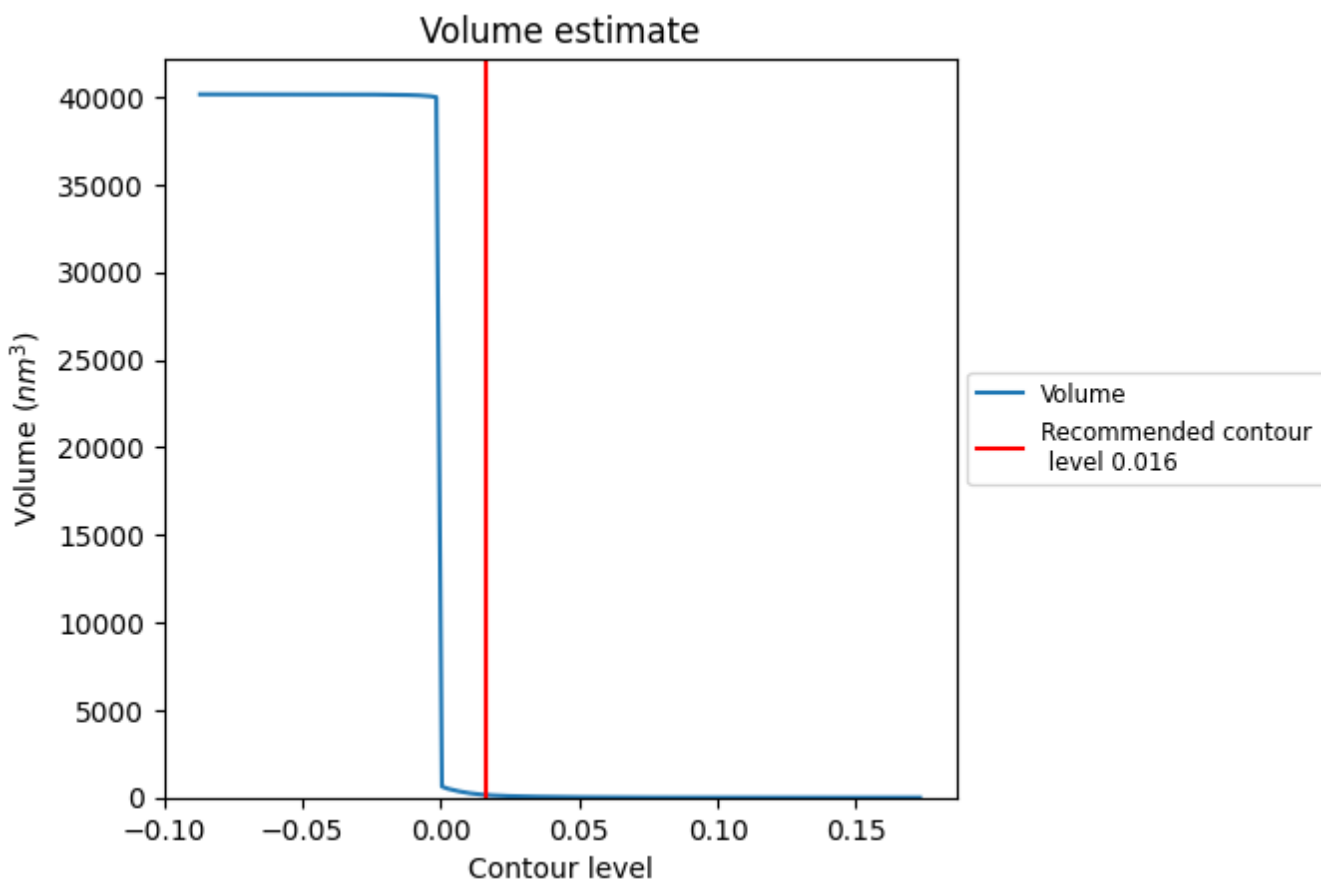
This section contains the results of statistical analysis of the map.

7.1 Map-value distribution [i](#)



The map-value distribution is plotted in 128 intervals along the x-axis. The y-axis is logarithmic. A spike in this graph at zero usually indicates that the volume has been masked.

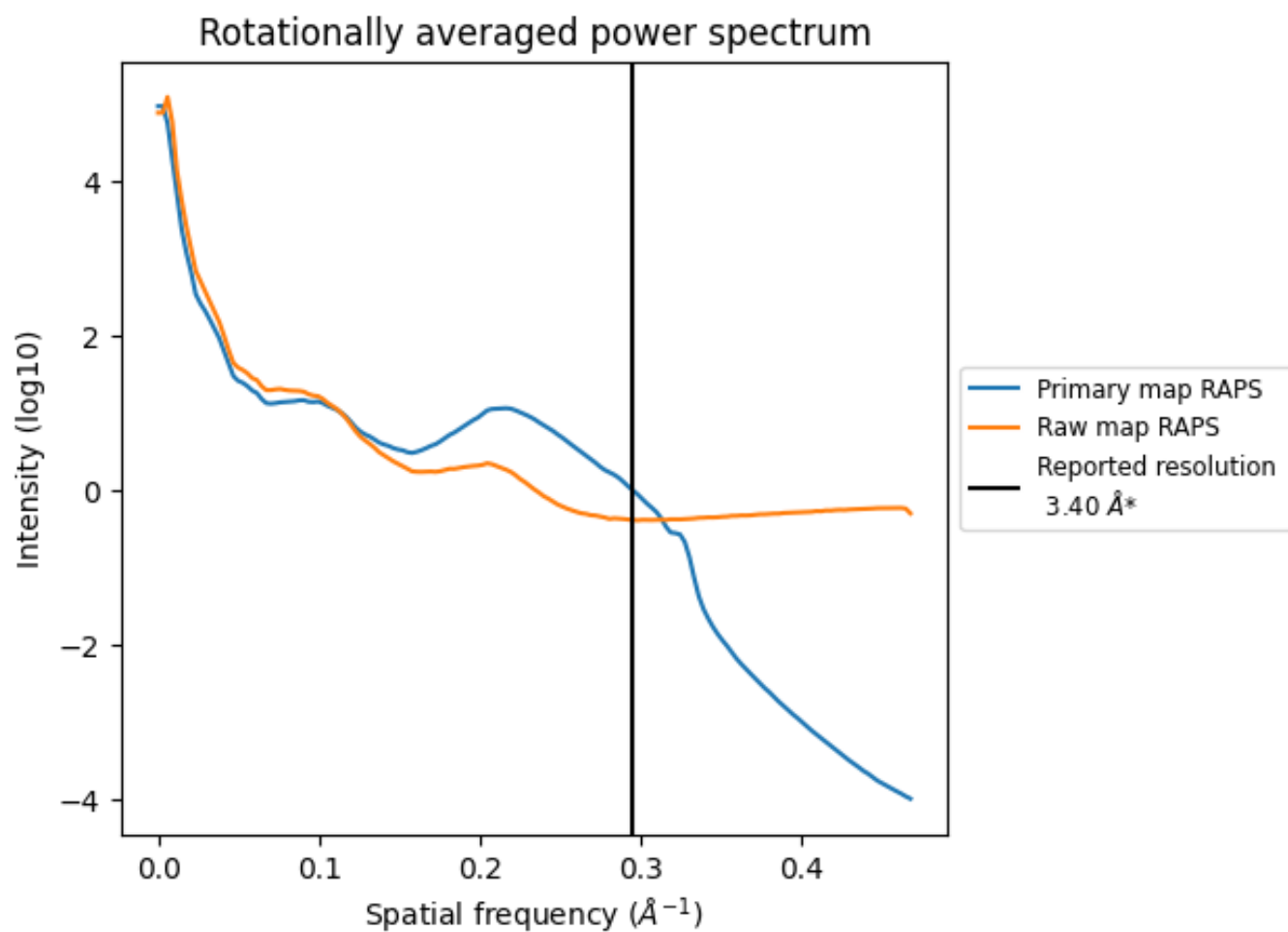
7.2 Volume estimate [\(i\)](#)



The volume at the recommended contour level is 154 nm³; this corresponds to an approximate mass of 139 kDa.

The volume estimate graph shows how the enclosed volume varies with the contour level. The recommended contour level is shown as a vertical line and the intersection between the line and the curve gives the volume of the enclosed surface at the given level.

7.3 Rotationally averaged power spectrum i

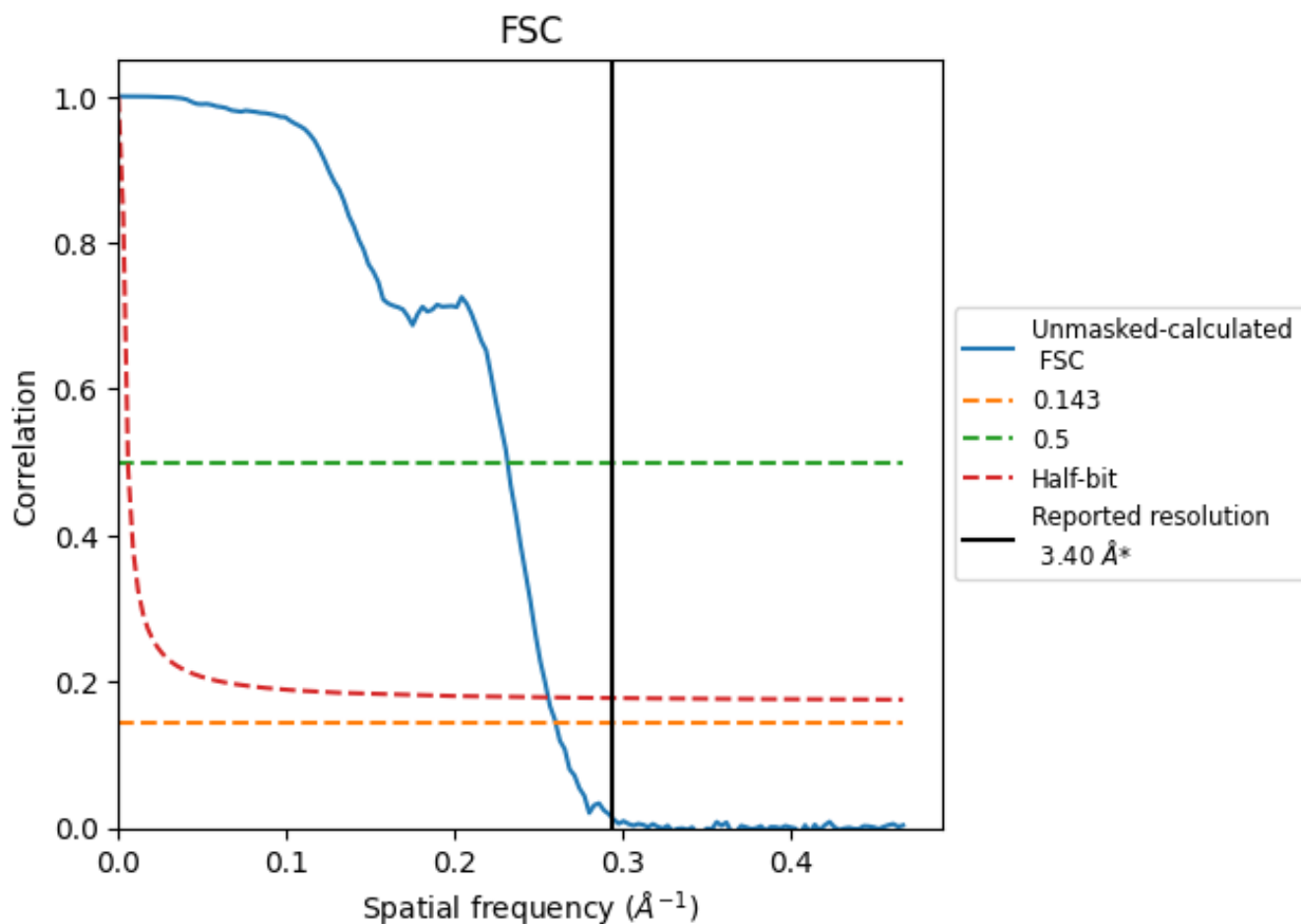


*Reported resolution corresponds to spatial frequency of 0.294 Å⁻¹

8 Fourier-Shell correlation [i](#)

Fourier-Shell Correlation (FSC) is the most commonly used method to estimate the resolution of single-particle and subtomogram-averaged maps. The shape of the curve depends on the imposed symmetry, mask and whether or not the two 3D reconstructions used were processed from a common reference. The reported resolution is shown as a black line. A curve is displayed for the half-bit criterion in addition to lines showing the 0.143 gold standard cut-off and 0.5 cut-off.

8.1 FSC [i](#)



*Reported resolution corresponds to spatial frequency of 0.294 Å⁻¹

8.2 Resolution estimates [i](#)

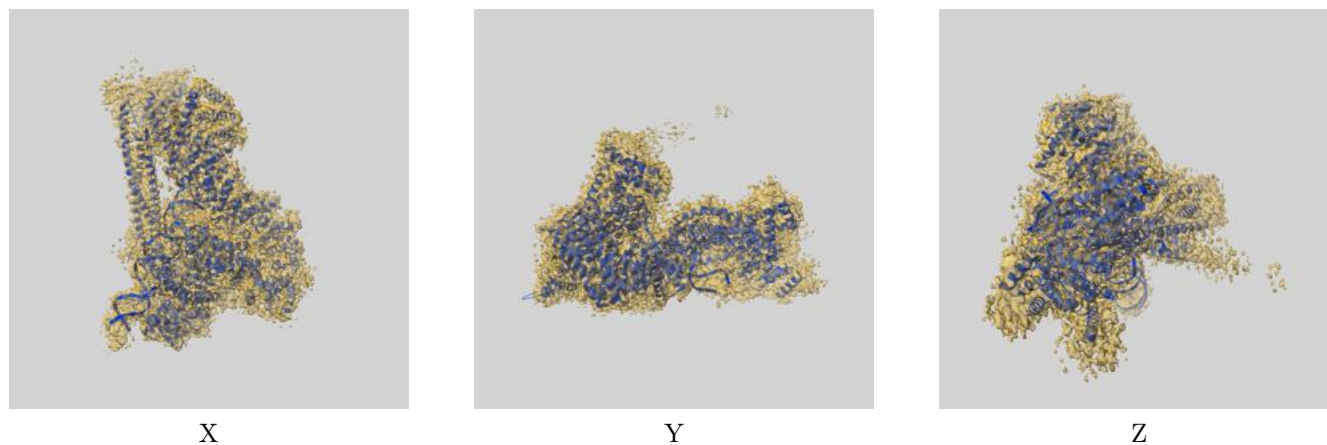
Resolution estimate (Å)	Estimation criterion (FSC cut-off)		
	0.143	0.5	Half-bit
Reported by author	3.40	-	-
Author-provided FSC curve	-	-	-
Unmasked-calculated*	3.84	4.32	3.91

*Resolution estimate based on FSC curve calculated by comparison of deposited half-maps. The value from deposited half-maps intersecting FSC 0.143 CUT-OFF 3.84 differs from the reported value 3.4 by more than 10 %

9 Map-model fit [i](#)

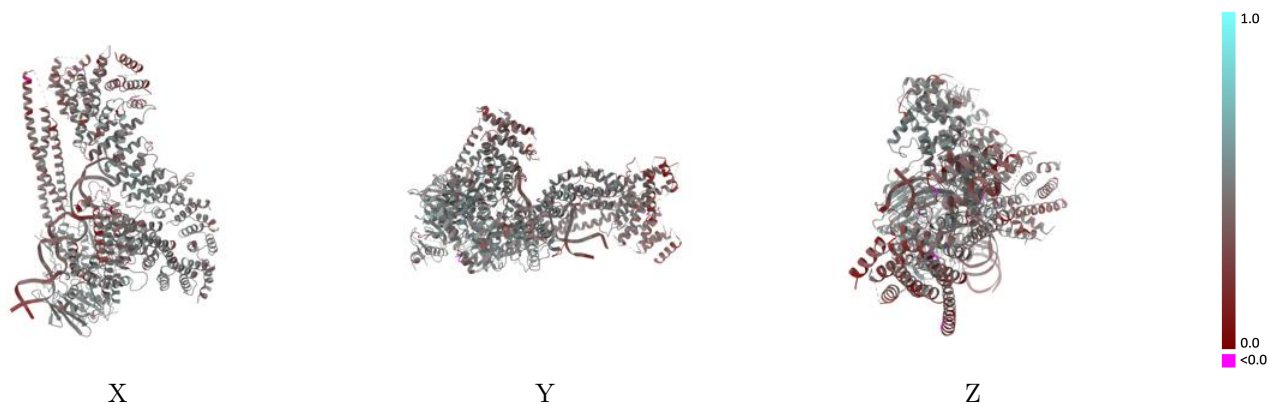
This section contains information regarding the fit between EMDB map EMD-11585 and PDB model 6ZZ6. Per-residue inclusion information can be found in section 3 on page 6.

9.1 Map-model overlay [i](#)



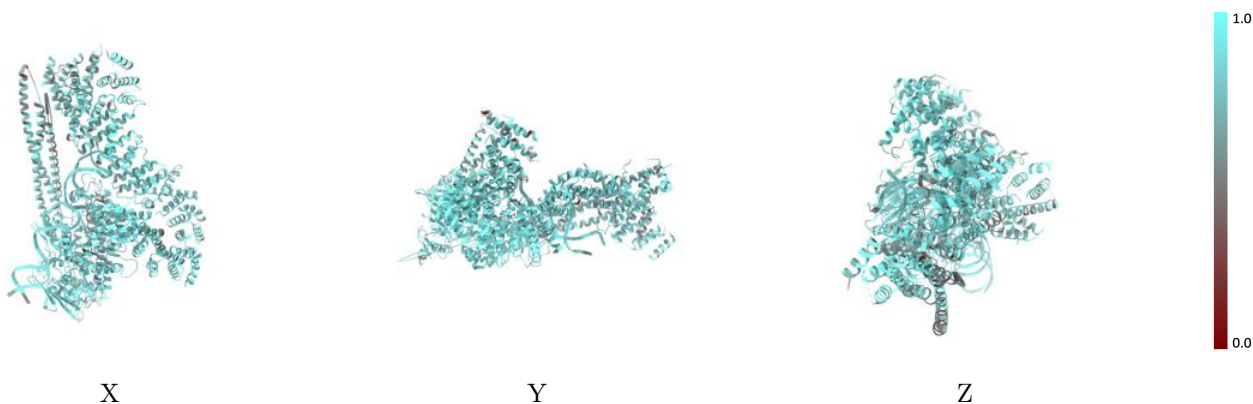
The images above show the 3D surface view of the map at the recommended contour level 0.016 at 50% transparency in yellow overlaid with a ribbon representation of the model coloured in blue. These images allow for the visual assessment of the quality of fit between the atomic model and the map.

9.2 Q-score mapped to coordinate model [i](#)



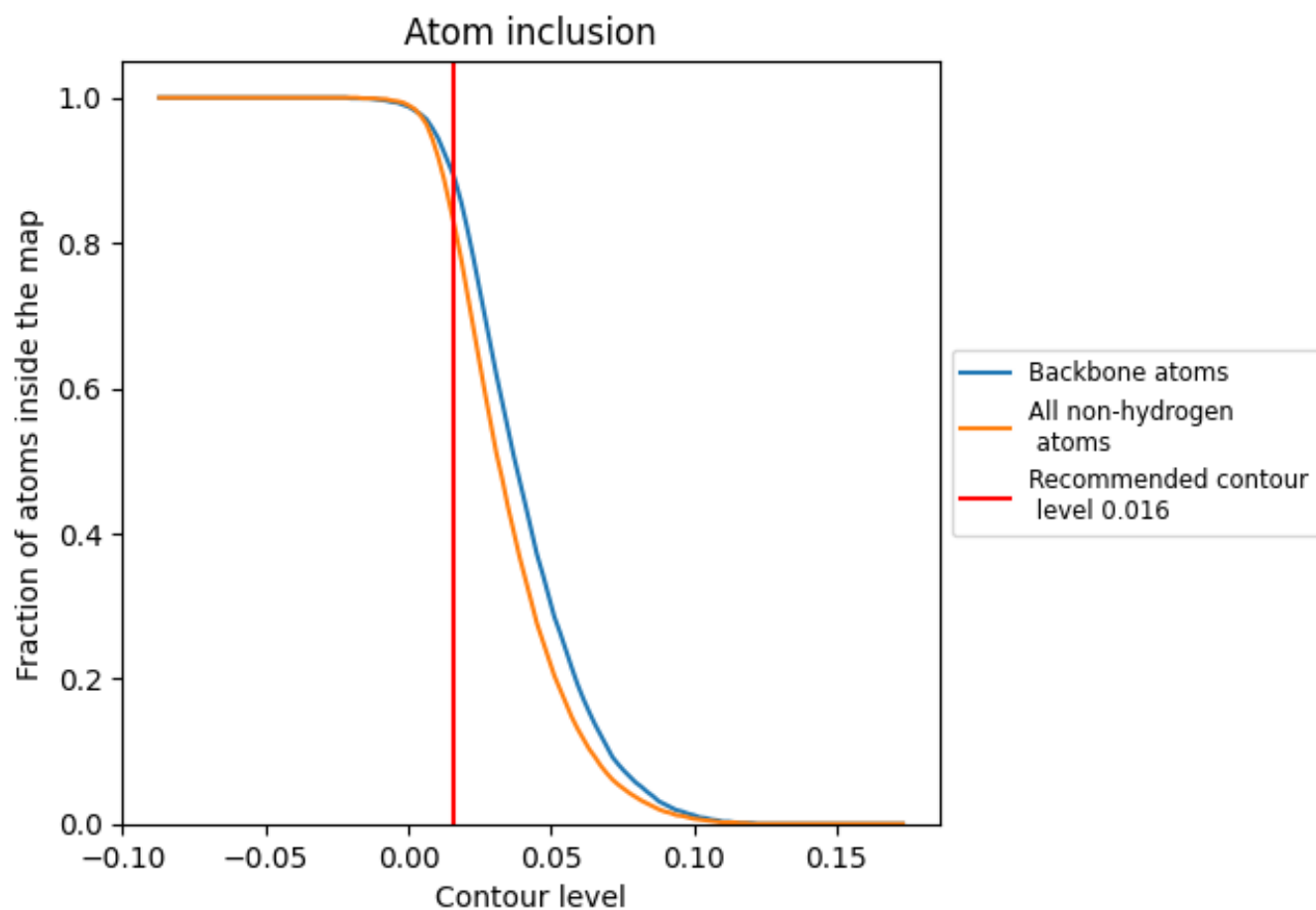
The images above show the model with each residue coloured according to its Q-score. This shows their resolvability in the map with higher Q-score values reflecting better resolvability. Please note: Q-score is calculating the resolvability of atoms, and thus high values are only expected at resolutions at which atoms can be resolved. Low Q-score values may therefore be expected for many entries.

9.3 Atom inclusion mapped to coordinate model [i](#)



The images above show the model with each residue coloured according to its atom inclusion. This shows to what extent they are inside the map at the recommended contour level (0.016).



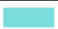











9.4 Atom inclusion [i](#)



At the recommended contour level, 89% of all backbone atoms, 83% of all non-hydrogen atoms, are inside the map.

9.5 Map-model fit summary

The table lists the average atom inclusion at the recommended contour level (0.016) and Q-score for the entire model and for each chain.

Chain	Atom inclusion	Q-score
All	 0.8280	 0.4390
A	 0.8640	 0.4790
B	 0.8310	 0.4560
C	 0.7750	 0.4350
D	 0.8210	 0.4310
F	 0.7880	 0.3230
G	 0.8430	 0.4030

