



# Full wwPDB X-ray Structure Validation Report ⓘ

Sep 18, 2023 – 06:19 PM EDT

PDB ID : 4ZXW  
Title : Crystal structure of SgcC5 protein from Streptomyces globisporus (complex with (R)-(-)-1-(2-naphthyl)-1,2-ethanediol and sucrose)  
Authors : Michalska, K.; Bigelow, L.; Jedrzejczak, R.; Babnigg, G.; Lohman, J.; Ma, M.; Rudolf, J.; Chang, C.-Y.; Shen, B.; Joachimiak, A.; Midwest Center for Structural Genomics (MCSG); Enzyme Discovery for Natural Product Biosynthesis (NatPro)  
Deposited on : 2015-05-20  
Resolution : 2.19 Å(reported)

This is a Full wwPDB X-ray Structure Validation Report for a publicly released PDB entry.

We welcome your comments at [validation@mail.wwpdb.org](mailto:validation@mail.wwpdb.org)

A user guide is available at

<https://www.wwpdb.org/validation/2017/XrayValidationReportHelp>

with specific help available everywhere you see the ⓘ symbol.

The types of validation reports are described at

<http://www.wwpdb.org/validation/2017/FAQs#types>.

---

The following versions of software and data (see [references ⓘ](#)) were used in the production of this report:

MolProbity : 4.02b-467  
Mogul : 1.8.5 (274361), CSD as541be (2020)  
Xtriage (Phenix) : 1.13  
EDS : 2.35.1  
Percentile statistics : 20191225.v01 (using entries in the PDB archive December 25th 2019)  
Refmac : 5.8.0158  
CCP4 : 7.0.044 (Gargrove)  
Ideal geometry (proteins) : Engh & Huber (2001)  
Ideal geometry (DNA, RNA) : Parkinson et al. (1996)

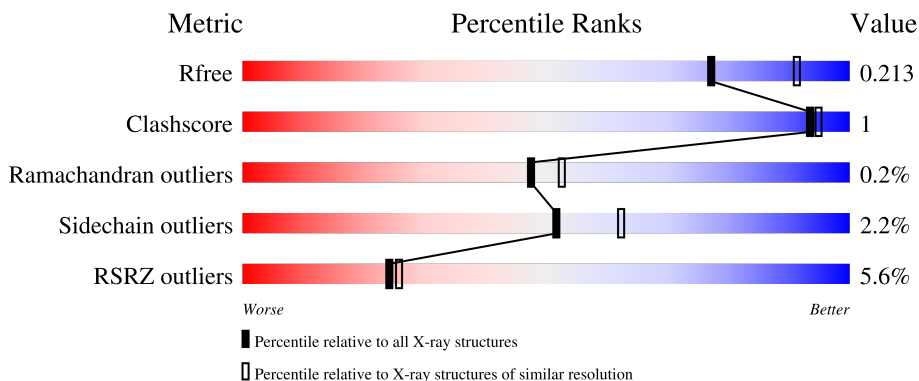
# 1 Overall quality at a glance

The following experimental techniques were used to determine the structure:

*X-RAY DIFFRACTION*

The reported resolution of this entry is 2.19 Å.

Percentile scores (ranging between 0-100) for global validation metrics of the entry are shown in the following graphic. The table shows the number of entries on which the scores are based.



Metric	Whole archive (#Entries)	Similar resolution (#Entries, resolution range(Å))
$R_{free}$	130704	6864 (2.20-2.16)
Clashscore	141614	7689 (2.20-2.16)
Ramachandran outliers	138981	7564 (2.20-2.16)
Sidechain outliers	138945	7564 (2.20-2.16)
RSRZ outliers	127900	6738 (2.20-2.16)

The table below summarises the geometric issues observed across the polymeric chains and their fit to the electron density. The red, orange, yellow and green segments of the lower bar indicate the fraction of residues that contain outliers for  $\geq 3$ , 2, 1 and 0 types of geometric quality criteria respectively. A grey segment represents the fraction of residues that are not modelled. The numeric value for each fraction is indicated below the corresponding segment, with a dot representing fractions  $\leq 5\%$ . The upper red bar (where present) indicates the fraction of residues that have poor fit to the electron density. The numeric value is given above the bar.

Mol	Chain	Length	Quality of chain
1	A	462	 7% 89% 7%
1	B	462	 4% 93%
2	C	2	 50% 50%
2	D	2	 100%

Validation Pipeline (wwPDB-VP) : 2.35.1

## 2 Entry composition [i](#)

There are 6 unique types of molecules in this entry. The entry contains 7291 atoms, of which 0 are hydrogens and 0 are deuteriums.

In the tables below, the ZeroOcc column contains the number of atoms modelled with zero occupancy, the AltConf column contains the number of residues with at least one atom in alternate conformation and the Trace column contains the number of residues modelled with at most 2 atoms.

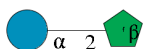
- Molecule 1 is a protein called C-domain type II peptide synthetase.

Mol	Chain	Residues	Atoms					ZeroOcc	AltConf	Trace
			Total	C	N	O	S			
1	A	443	Total	C	N	O	S	0	2	0
			3456	2172	624	647	13			
1	B	443	Total	C	N	O	S	0	1	0
			3445	2166	620	646	13			

There are 6 discrepancies between the modelled and reference sequences:

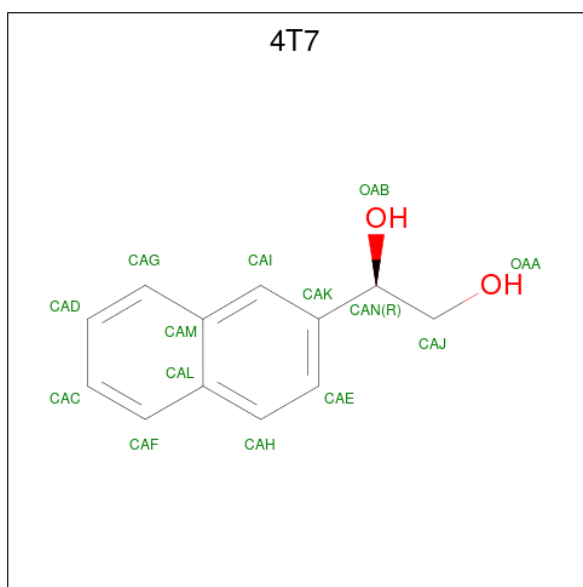
Chain	Residue	Modelled	Actual	Comment	Reference
A	-2	SER	-	expression tag	UNP Q8GMG2
A	-1	ASN	-	expression tag	UNP Q8GMG2
A	0	ALA	-	expression tag	UNP Q8GMG2
B	-2	SER	-	expression tag	UNP Q8GMG2
B	-1	ASN	-	expression tag	UNP Q8GMG2
B	0	ALA	-	expression tag	UNP Q8GMG2

- Molecule 2 is an oligosaccharide called beta-D-fructofuranose-(2-1)-alpha-D-glucopyranose.



Mol	Chain	Residues	Atoms			ZeroOcc	AltConf	Trace
			Total	C	O			
2	C	2	Total	C	O	0	0	0
			23	12	11			
2	D	2	Total	C	O	0	0	0
			23	12	11			

- Molecule 3 is (1R)-1-(naphthalen-2-yl)ethane-1,2-diol (three-letter code: 4T7) (formula: C<sub>12</sub>H<sub>12</sub>O<sub>2</sub>).



Mol	Chain	Residues	Atoms			ZeroOcc	AltConf
3	A	1	Total	C	O	0	0
			14	12	2		
3	B	1	Total	C	O	0	0
			14	12	2		

- Molecule 4 is SULFATE ION (three-letter code: SO4) (formula: O<sub>4</sub>S).



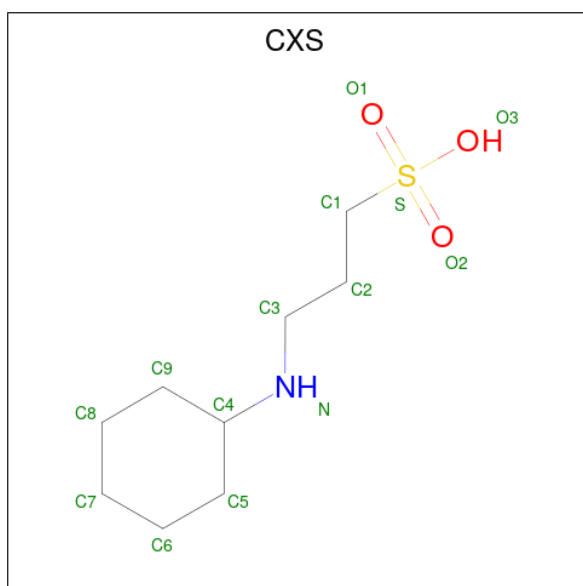
Mol	Chain	Residues	Atoms			ZeroOcc	AltConf
4	A	1	Total	O	S	0	0
			5	4	1		
4	A	1	Total	O	S	0	0
			5	4	1		

*Continued on next page...*

Continued from previous page...

Mol	Chain	Residues	Atoms			ZeroOcc	AltConf
4	A	1	Total	O	S	0	0
			5	4	1		
4	B	1	Total	O	S	0	0
			5	4	1		
4	B	1	Total	O	S	0	0
			5	4	1		

- Molecule 5 is 3-CYCLOHEXYL-1-PROPYLSULFONIC ACID (three-letter code: CXS) (formula: C<sub>9</sub>H<sub>19</sub>NO<sub>3</sub>S).



Mol	Chain	Residues	Atoms				ZeroOcc	AltConf	
5	B	1	Total	C	N	O	S	0	1
			28	18	2	6	2		

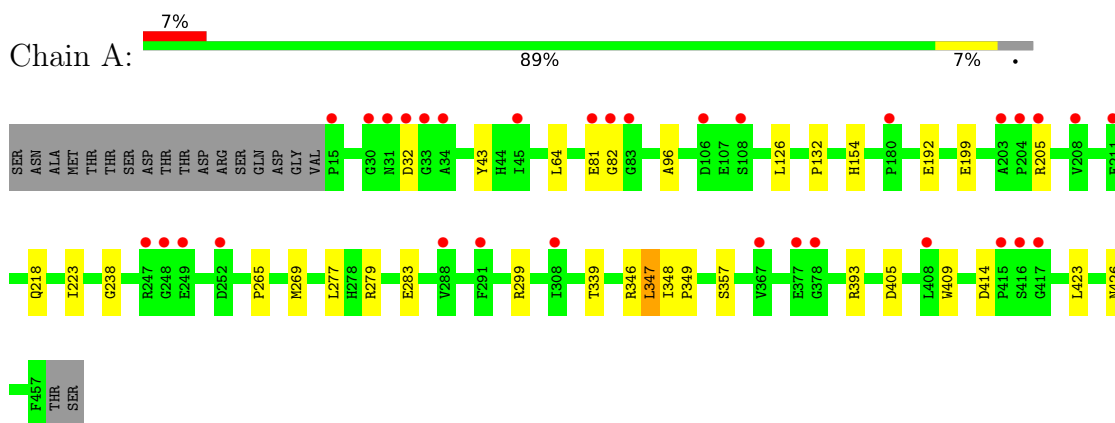
- Molecule 6 is water.

Mol	Chain	Residues	Atoms		ZeroOcc	AltConf
6	A	119	Total	O	0	1
			119	119		
6	B	144	Total	O	0	2
			144	144		

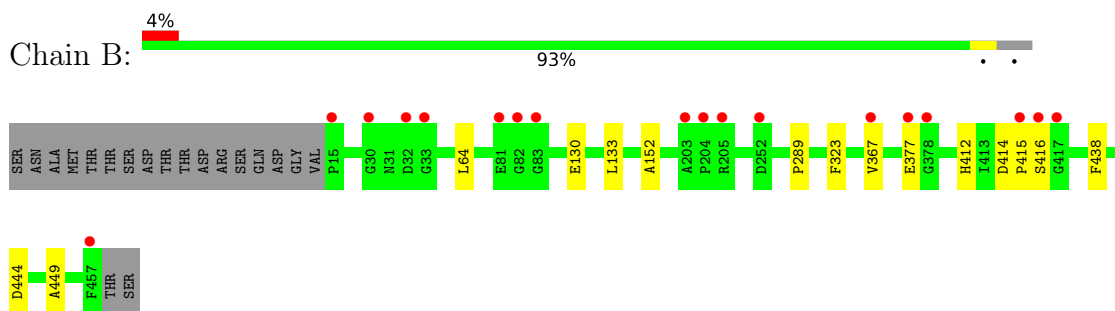
### 3 Residue-property plots [i](#)

These plots are drawn for all protein, RNA, DNA and oligosaccharide chains in the entry. The first graphic for a chain summarises the proportions of the various outlier classes displayed in the second graphic. The second graphic shows the sequence view annotated by issues in geometry and electron density. Residues are color-coded according to the number of geometric quality criteria for which they contain at least one outlier: green = 0, yellow = 1, orange = 2 and red = 3 or more. A red dot above a residue indicates a poor fit to the electron density ( $RSRZ > 2$ ). Stretches of 2 or more consecutive residues without any outlier are shown as a green connector. Residues present in the sample, but not in the model, are shown in grey.

- Molecule 1: C-domain type II peptide synthetase



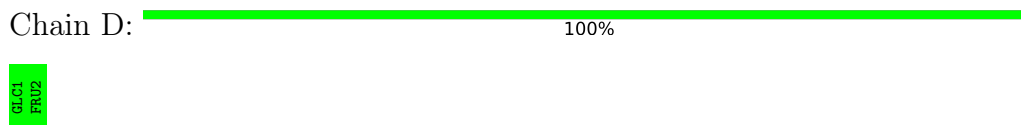
- Molecule 1: C-domain type II peptide synthetase



- Molecule 2: beta-D-fructofuranose-(2-1)-alpha-D-glucopyranose



- Molecule 2: beta-D-fructofuranose-(2-1)-alpha-D-glucopyranose



## 4 Data and refinement statistics

Property	Value	Source
Space group	P 21 21 21	Depositor
Cell constants a, b, c, $\alpha$ , $\beta$ , $\gamma$	99.40Å 105.30Å 108.17Å 90.00° 90.00° 90.00°	Depositor
Resolution (Å)	34.28 – 2.19 34.28 – 2.19	Depositor EDS
% Data completeness (in resolution range)	99.2 (34.28-2.19) 98.9 (34.28-2.19)	Depositor EDS
$R_{merge}$	0.11	Depositor
$R_{sym}$	(Not available)	Depositor
$\langle I/\sigma(I) \rangle$ <sup>1</sup>	3.64 (at 2.18Å)	Xtrriage
Refinement program	PHENIX dev_1938	Depositor
R, $R_{free}$	0.161 , 0.208 0.170 , 0.213	Depositor DCC
$R_{free}$ test set	1204 reflections (2.05%)	wwPDB-VP
Wilson B-factor (Å <sup>2</sup> )	28.4	Xtrriage
Anisotropy	0.770	Xtrriage
Bulk solvent $k_{sol}$ (e/Å <sup>3</sup> ), $B_{sol}$ (Å <sup>2</sup> )	0.38 , 48.9	EDS
L-test for twinning <sup>2</sup>	$\langle  L  \rangle = 0.49$ , $\langle L^2 \rangle = 0.33$	Xtrriage
Estimated twinning fraction	0.009 for -h,l,k	Xtrriage
$F_o, F_c$ correlation	0.96	EDS
Total number of atoms	7291	wwPDB-VP
Average B, all atoms (Å <sup>2</sup> )	38.0	wwPDB-VP

Xtrriage's analysis on translational NCS is as follows: *The largest off-origin peak in the Patterson function is 4.91% of the height of the origin peak. No significant pseudotranslation is detected.*

<sup>1</sup>Intensities estimated from amplitudes.

<sup>2</sup>Theoretical values of  $\langle |L| \rangle$ ,  $\langle L^2 \rangle$  for acentric reflections are 0.5, 0.333 respectively for untwinned datasets, and 0.375, 0.2 for perfectly twinned datasets.

## 5 Model quality [i](#)

### 5.1 Standard geometry [i](#)

Bond lengths and bond angles in the following residue types are not validated in this section: 4T7, GLC, SO4, CXS, FRU

The Z score for a bond length (or angle) is the number of standard deviations the observed value is removed from the expected value. A bond length (or angle) with  $|Z| > 5$  is considered an outlier worth inspection. RMSZ is the root-mean-square of all Z scores of the bond lengths (or angles).

Mol	Chain	Bond lengths		Bond angles	
		RMSZ	# Z  >5	RMSZ	# Z  >5
1	A	0.60	0/3538	0.67	0/4807
1	B	0.63	0/3527	0.68	0/4793
All	All	0.61	0/7065	0.68	0/9600

There are no bond length outliers.

There are no bond angle outliers.

There are no chirality outliers.

There are no planarity outliers.

### 5.2 Too-close contacts [i](#)

In the following table, the Non-H and H(model) columns list the number of non-hydrogen atoms and hydrogen atoms in the chain respectively. The H(added) column lists the number of hydrogen atoms added and optimized by MolProbity. The Clashes column lists the number of clashes within the asymmetric unit, whereas Symm-Clashes lists symmetry-related clashes.

Mol	Chain	Non-H	H(model)	H(added)	Clashes	Symm-Clashes
1	A	3456	0	3369	13	0
1	B	3445	0	3357	7	0
2	C	23	0	21	1	0
2	D	23	0	21	0	0
3	A	14	0	12	0	0
3	B	14	0	12	0	0
4	A	15	0	0	0	0
4	B	10	0	0	0	0
5	B	28	0	36	0	0
6	A	119	0	0	1	0
6	B	144	0	0	0	0
All	All	7291	0	6828	20	0



The all-atom clashscore is defined as the number of clashes found per 1000 atoms (including hydrogen atoms). The all-atom clashscore for this structure is 1.

All (20) close contacts within the same asymmetric unit are listed below, sorted by their clash magnitude.

Atom-1	Atom-2	Interatomic distance (Å)	Clash overlap (Å)
1:A:192:GLU:OE2	1:A:299:ARG:NH1	1.97	0.98
1:B:414:ASP:OD1	1:B:416:SER:OG	2.25	0.52
1:A:126:LEU:HD11	1:A:132:PRO:O	2.13	0.48
1:A:348:ILE:N	1:A:349:PRO:CD	2.78	0.47
1:A:223:ILE:HG21	1:A:277:LEU:HD13	1.96	0.47
1:A:393:ARG:HD3	2:C:2:FRU:O3	2.14	0.47
1:A:347:LEU:HD23	1:A:347:LEU:C	2.36	0.47
1:A:64:LEU:HD23	1:A:96:ALA:O	2.15	0.46
1:A:346:ARG:NH2	6:A:604:HOH:O	2.43	0.44
1:A:43:TYR:CE2	1:A:154:HIS:HB3	2.53	0.44
1:B:289:PRO:HG2	1:B:367:VAL:HG22	2.01	0.43
1:B:133:LEU:O	1:B:152:ALA:HA	2.19	0.43
1:A:265:PRO:O	1:A:269:MET:HG2	2.19	0.42
1:B:412:HIS:CE1	1:B:414:ASP:HB3	2.55	0.42
1:A:238:GLY:O	1:A:426:ASN:HA	2.19	0.41
1:A:43:TYR:CD2	1:A:154:HIS:HB3	2.55	0.41
1:B:323:PHE:CG	1:B:449:ALA:HB1	2.56	0.41
1:B:414:ASP:HB2	1:B:415:PRO:HD2	2.02	0.41
1:A:409:TRP:CE2	1:A:423:LEU:HD13	2.55	0.40
1:B:414:ASP:HB2	1:B:415:PRO:CD	2.52	0.40

There are no symmetry-related clashes.

## 5.3 Torsion angles [i](#)

### 5.3.1 Protein backbone [i](#)

In the following table, the Percentiles column shows the percent Ramachandran outliers of the chain as a percentile score with respect to all X-ray entries followed by that with respect to entries of similar resolution.

The Analysed column shows the number of residues for which the backbone conformation was analysed, and the total number of residues.

Mol	Chain	Analysed	Favoured	Allowed	Outliers	Percentiles
1	A	443/462 (96%)	431 (97%)	10 (2%)	2 (0%)	29 28

*Continued on next page...*

*Continued from previous page...*

Mol	Chain	Analysed	Favoured	Allowed	Outliers	Percentiles	
1	B	442/462 (96%)	434 (98%)	8 (2%)	0	100	100
All	All	885/924 (96%)	865 (98%)	18 (2%)	2 (0%)	47	52

All (2) Ramachandran outliers are listed below:

Mol	Chain	Res	Type
1	A	82	GLY
1	A	405	ASP

### 5.3.2 Protein sidechains [i](#)

In the following table, the Percentiles column shows the percent sidechain outliers of the chain as a percentile score with respect to all X-ray entries followed by that with respect to entries of similar resolution.

The Analysed column shows the number of residues for which the sidechain conformation was analysed, and the total number of residues.

Mol	Chain	Analysed	Rotameric	Outliers	Percentiles	
1	A	360/375 (96%)	349 (97%)	11 (3%)	40	48
1	B	359/375 (96%)	354 (99%)	5 (1%)	67	78
All	All	719/750 (96%)	703 (98%)	16 (2%)	52	62

All (16) residues with a non-rotameric sidechain are listed below:

Mol	Chain	Res	Type
1	A	32	ASP
1	A	81	GLU
1	A	199	GLU
1	A	205	ARG
1	A	218	GLN
1	A	279	ARG
1	A	283	GLU
1	A	339	THR
1	A	347	LEU
1	A	357	SER
1	A	414	ASP
1	B	64	LEU
1	B	130	GLU
1	B	377	GLU

*Continued on next page...*

*Continued from previous page...*

Mol	Chain	Res	Type
1	B	438	PHE
1	B	444	ASP

Sometimes sidechains can be flipped to improve hydrogen bonding and reduce clashes. There are no such sidechains identified.

### 5.3.3 RNA [i](#)

There are no RNA molecules in this entry.

## 5.4 Non-standard residues in protein, DNA, RNA chains [i](#)

There are no non-standard protein/DNA/RNA residues in this entry.

## 5.5 Carbohydrates [i](#)

4 monosaccharides are modelled in this entry.

In the following table, the Counts columns list the number of bonds (or angles) for which Mogul statistics could be retrieved, the number of bonds (or angles) that are observed in the model and the number of bonds (or angles) that are defined in the Chemical Component Dictionary. The Link column lists molecule types, if any, to which the group is linked. The Z score for a bond length (or angle) is the number of standard deviations the observed value is removed from the expected value. A bond length (or angle) with  $|Z| > 2$  is considered an outlier worth inspection. RMSZ is the root-mean-square of all Z scores of the bond lengths (or angles).

Mol	Type	Chain	Res	Link	Bond lengths			Bond angles		
					Counts	RMSZ	# Z  > 2	Counts	RMSZ	# Z  > 2
2	GLC	C	1	2	11,11,12	0.47	0	15,15,17	1.26	1 (6%)
2	FRU	C	2	2	11,12,12	0.70	0	10,18,18	1.63	2 (20%)
2	GLC	D	1	2	11,11,12	0.67	0	15,15,17	1.08	0
2	FRU	D	2	2	11,12,12	0.68	0	10,18,18	0.81	0

In the following table, the Chirals column lists the number of chiral outliers, the number of chiral centers analysed, the number of these observed in the model and the number defined in the Chemical Component Dictionary. Similar counts are reported in the Torsion and Rings columns. '-' means no outliers of that kind were identified.

Mol	Type	Chain	Res	Link	Chirals	Torsions	Rings
2	GLC	C	1	2	-	0/2/19/22	0/1/1/1

*Continued on next page...*

*Continued from previous page...*

Mol	Type	Chain	Res	Link	Chirals	Torsions	Rings
2	FRU	C	2	2	-	1/5/24/24	0/1/1/1
2	GLC	D	1	2	-	0/2/19/22	0/1/1/1
2	FRU	D	2	2	-	0/5/24/24	0/1/1/1

There are no bond length outliers.

All (3) bond angle outliers are listed below:

Mol	Chain	Res	Type	Atoms	Z	Observed(°)	Ideal(°)
2	C	2	FRU	O3-C3-C4	3.41	125.09	113.32
2	C	1	GLC	C1-C2-C3	2.81	113.12	109.67
2	C	2	FRU	C6-C5-C4	-2.43	109.23	115.09

There are no chirality outliers.

All (1) torsion outliers are listed below:

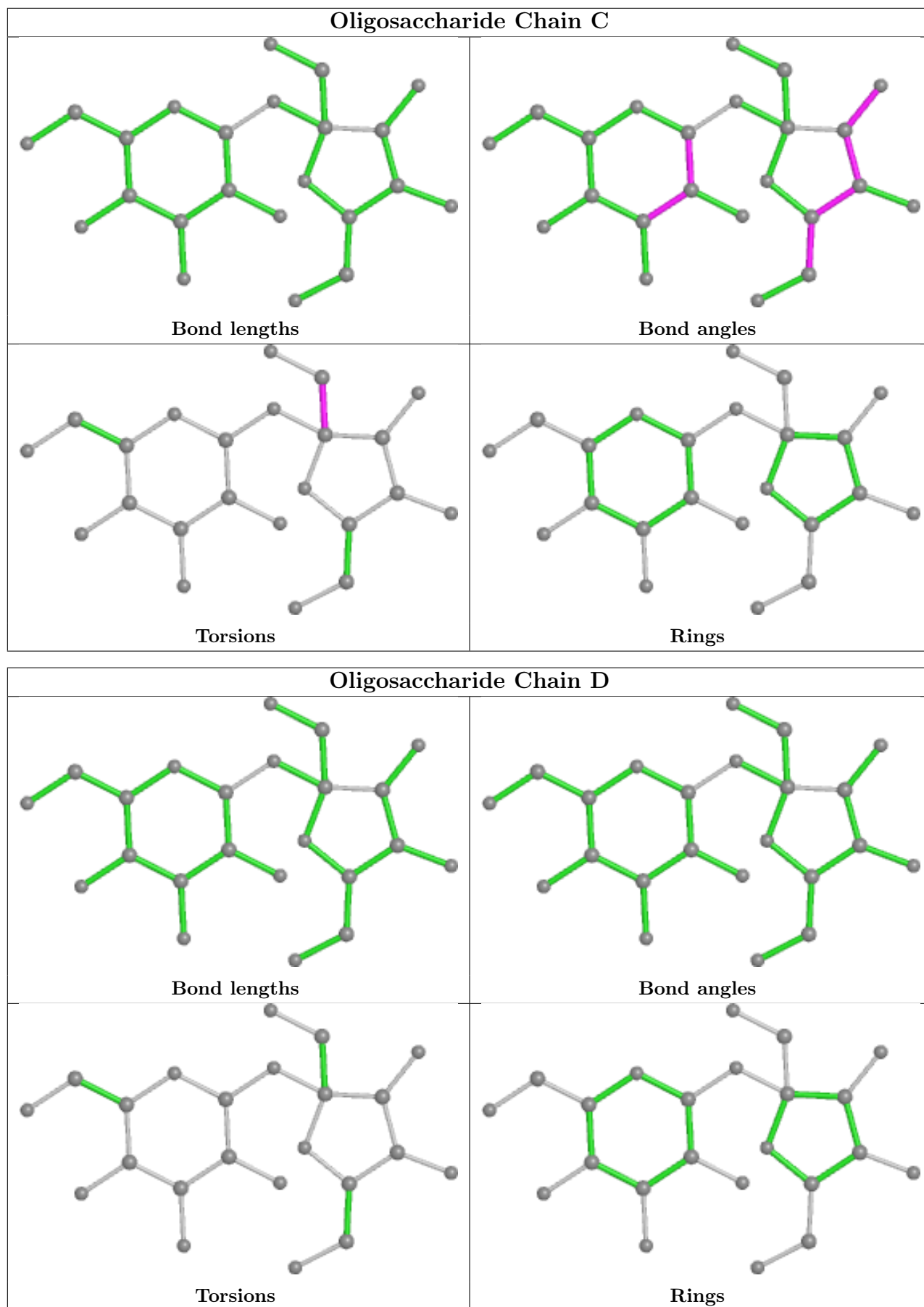
Mol	Chain	Res	Type	Atoms
2	C	2	FRU	O1-C1-C2-O2

There are no ring outliers.

1 monomer is involved in 1 short contact:

Mol	Chain	Res	Type	Clashes	Symm-Clashes
2	C	2	FRU	1	0

The following is a two-dimensional graphical depiction of Mogul quality analysis of bond lengths, bond angles, torsion angles, and ring geometry for oligosaccharide.



## 5.6 Ligand geometry [i](#)

9 ligands are modelled in this entry.

In the following table, the Counts columns list the number of bonds (or angles) for which Mogul statistics could be retrieved, the number of bonds (or angles) that are observed in the model and the number of bonds (or angles) that are defined in the Chemical Component Dictionary. The Link column lists molecule types, if any, to which the group is linked. The Z score for a bond length (or angle) is the number of standard deviations the observed value is removed from the expected value. A bond length (or angle) with  $|Z| > 2$  is considered an outlier worth inspection. RMSZ is the root-mean-square of all Z scores of the bond lengths (or angles).

Mol	Type	Chain	Res	Link	Bond lengths			Bond angles		
					Counts	RMSZ	# Z  > 2	Counts	RMSZ	# Z  > 2
5	CXS	B	505[B]	-	14,14,14	2.65	2 (14%)	18,18,18	1.92	4 (22%)
4	SO4	A	503	-	4,4,4	0.15	0	6,6,6	0.54	0
4	SO4	A	505	-	4,4,4	0.14	0	6,6,6	0.08	0
4	SO4	A	504	-	4,4,4	0.12	0	6,6,6	0.12	0
4	SO4	B	504	-	4,4,4	0.20	0	6,6,6	0.28	0
5	CXS	B	505[A]	-	14,14,14	2.61	2 (14%)	18,18,18	3.53	6 (33%)
3	4T7	A	501	-	14,15,15	1.36	1 (7%)	17,20,20	0.87	0
3	4T7	B	501	-	14,15,15	1.44	1 (7%)	17,20,20	0.88	0
4	SO4	B	503	-	4,4,4	0.14	0	6,6,6	0.31	0

In the following table, the Chirals column lists the number of chiral outliers, the number of chiral centers analysed, the number of these observed in the model and the number defined in the Chemical Component Dictionary. Similar counts are reported in the Torsion and Rings columns. '-' means no outliers of that kind were identified.

Mol	Type	Chain	Res	Link	Chirals	Torsions	Rings
3	4T7	B	501	-	-	0/6/6/6	0/2/2/2
5	CXS	B	505[B]	-	-	2/8/16/16	0/1/1/1
5	CXS	B	505[A]	-	-	1/8/16/16	0/1/1/1
3	4T7	A	501	-	-	0/6/6/6	0/2/2/2

All (6) bond length outliers are listed below:

Mol	Chain	Res	Type	Atoms	Z	Observed(Å)	Ideal(Å)
5	B	505[B]	CXS	C1-S	-7.43	1.66	1.77
5	B	505[A]	CXS	C1-S	-7.19	1.67	1.77
5	B	505[A]	CXS	O2-S	6.33	1.63	1.45
5	B	505[B]	CXS	O2-S	6.29	1.63	1.45
3	B	501	4T7	CAK-CAN	-3.42	1.45	1.51
3	A	501	4T7	CAK-CAN	-3.13	1.46	1.51

All (10) bond angle outliers are listed below:

Mol	Chain	Res	Type	Atoms	Z	Observed(°)	Ideal(°)
5	B	505[A]	CXS	C2-C1-S	-12.71	93.77	113.25
5	B	505[B]	CXS	C3-N-C4	5.01	123.97	114.14
5	B	505[A]	CXS	O1-S-C1	4.72	112.60	106.92
5	B	505[B]	CXS	O3-S-C1	3.61	111.61	105.77
5	B	505[B]	CXS	C8-C9-C4	3.29	117.29	111.11
5	B	505[A]	CXS	C8-C9-C4	2.84	116.45	111.11
5	B	505[A]	CXS	O3-S-O1	-2.75	104.55	111.27
5	B	505[A]	CXS	C3-N-C4	2.62	119.29	114.14
5	B	505[B]	CXS	O1-S-C1	2.51	109.94	106.92
5	B	505[A]	CXS	O3-S-C1	2.36	109.58	105.77

There are no chirality outliers.

All (3) torsion outliers are listed below:

Mol	Chain	Res	Type	Atoms
5	B	505[A]	CXS	C1-C2-C3-N
5	B	505[B]	CXS	S-C1-C2-C3
5	B	505[B]	CXS	C2-C1-S-O1

There are no ring outliers.

No monomer is involved in short contacts.

## 5.7 Other polymers [i](#)

There are no such residues in this entry.

## 5.8 Polymer linkage issues [i](#)

There are no chain breaks in this entry.

## 6 Fit of model and data

### 6.1 Protein, DNA and RNA chains

In the following table, the column labelled ‘#RSRZ > 2’ contains the number (and percentage) of RSRZ outliers, followed by percent RSRZ outliers for the chain as percentile scores relative to all X-ray entries and entries of similar resolution. The OWAB column contains the minimum, median, 95<sup>th</sup> percentile and maximum values of the occupancy-weighted average B-factor per residue. The column labelled ‘Q < 0.9’ lists the number of (and percentage) of residues with an average occupancy less than 0.9.

Mol	Chain	Analysed	<RSRZ>	#RSRZ>2	OWAB(Å <sup>2</sup> )	Q<0.9
1	A	443/462 (95%)	0.21	32 (7%) 15 16	20, 34, 70, 112	0
1	B	443/462 (95%)	0.08	18 (4%) 37 38	20, 31, 65, 104	0
All	All	886/924 (95%)	0.15	50 (5%) 24 26	20, 33, 68, 112	0

All (50) RSRZ outliers are listed below:

Mol	Chain	Res	Type	RSRZ
1	A	33	GLY	6.4
1	B	32	ASP	5.1
1	A	378	GLY	4.6
1	A	82	GLY	4.2
1	B	377	GLU	4.0
1	B	378	GLY	3.8
1	A	377	GLU	3.6
1	B	82	GLY	3.5
1	A	415	PRO	3.5
1	A	106	ASP	3.4
1	A	208	VAL	3.4
1	A	408	LEU	3.3
1	A	367	VAL	3.3
1	B	30	GLY	3.3
1	A	247	ARG	3.1
1	B	203	ALA	3.0
1	B	415	PRO	2.9
1	B	83	GLY	2.9
1	A	204	PRO	2.9
1	A	205	ARG	2.8
1	B	417	GLY	2.8
1	A	30	GLY	2.6
1	B	204	PRO	2.6
1	A	81	GLU	2.6

*Continued on next page...*



*Continued from previous page...*

Mol	Chain	Res	Type	RSRZ
1	A	417	GLY	2.5
1	B	15	PRO	2.4
1	A	252	ASP	2.4
1	A	15	PRO	2.3
1	B	205	ARG	2.3
1	B	33	GLY	2.3
1	A	203	ALA	2.3
1	A	211	GLU	2.3
1	A	83	GLY	2.3
1	B	457	PHE	2.3
1	B	81	GLU	2.2
1	A	34	ALA	2.2
1	B	416	SER	2.2
1	A	308	ILE	2.2
1	B	367	VAL	2.2
1	A	31	ASN	2.2
1	A	291	PHE	2.2
1	A	45	ILE	2.1
1	A	108	SER	2.1
1	A	288	VAL	2.1
1	A	248	GLY	2.1
1	B	252	ASP	2.1
1	A	32	ASP	2.1
1	A	249	GLU	2.1
1	A	416	SER	2.1
1	A	180	PRO	2.0

## 6.2 Non-standard residues in protein, DNA, RNA chains [\(i\)](#)

There are no non-standard protein/DNA/RNA residues in this entry.

## 6.3 Carbohydrates [\(i\)](#)

In the following table, the Atoms column lists the number of modelled atoms in the group and the number defined in the chemical component dictionary. The B-factors column lists the minimum, median, 95<sup>th</sup> percentile and maximum values of B factors of atoms in the group. The column labelled 'Q< 0.9' lists the number of atoms with occupancy less than 0.9.

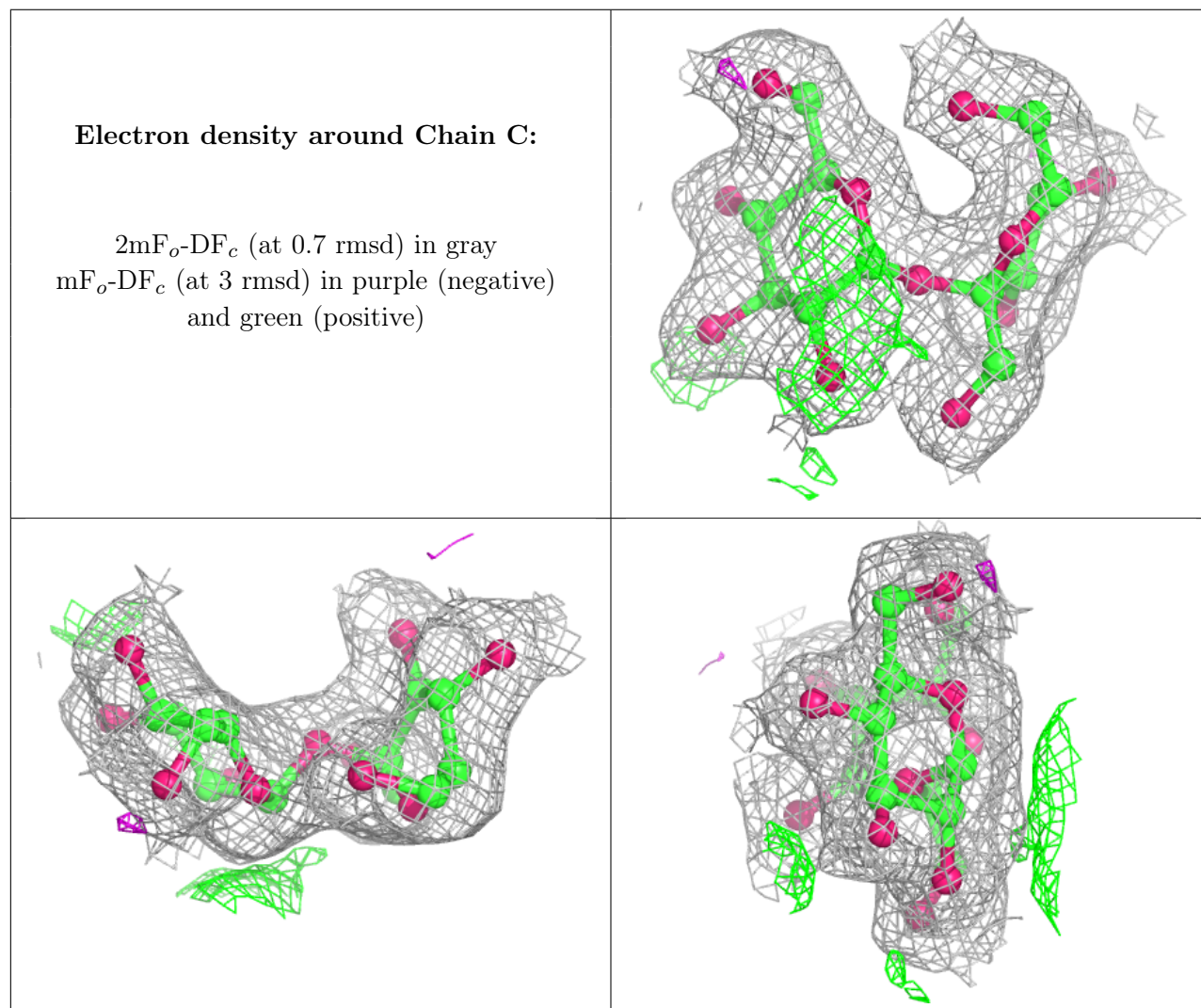
Mol	Type	Chain	Res	Atoms	RSCC	RSR	B-factors(Å <sup>2</sup> )	Q<0.9
2	FRU	C	2	12/12	0.96	0.12	23,28,35,39	0
2	GLC	C	1	11/12	0.97	0.12	24,29,33,33	0

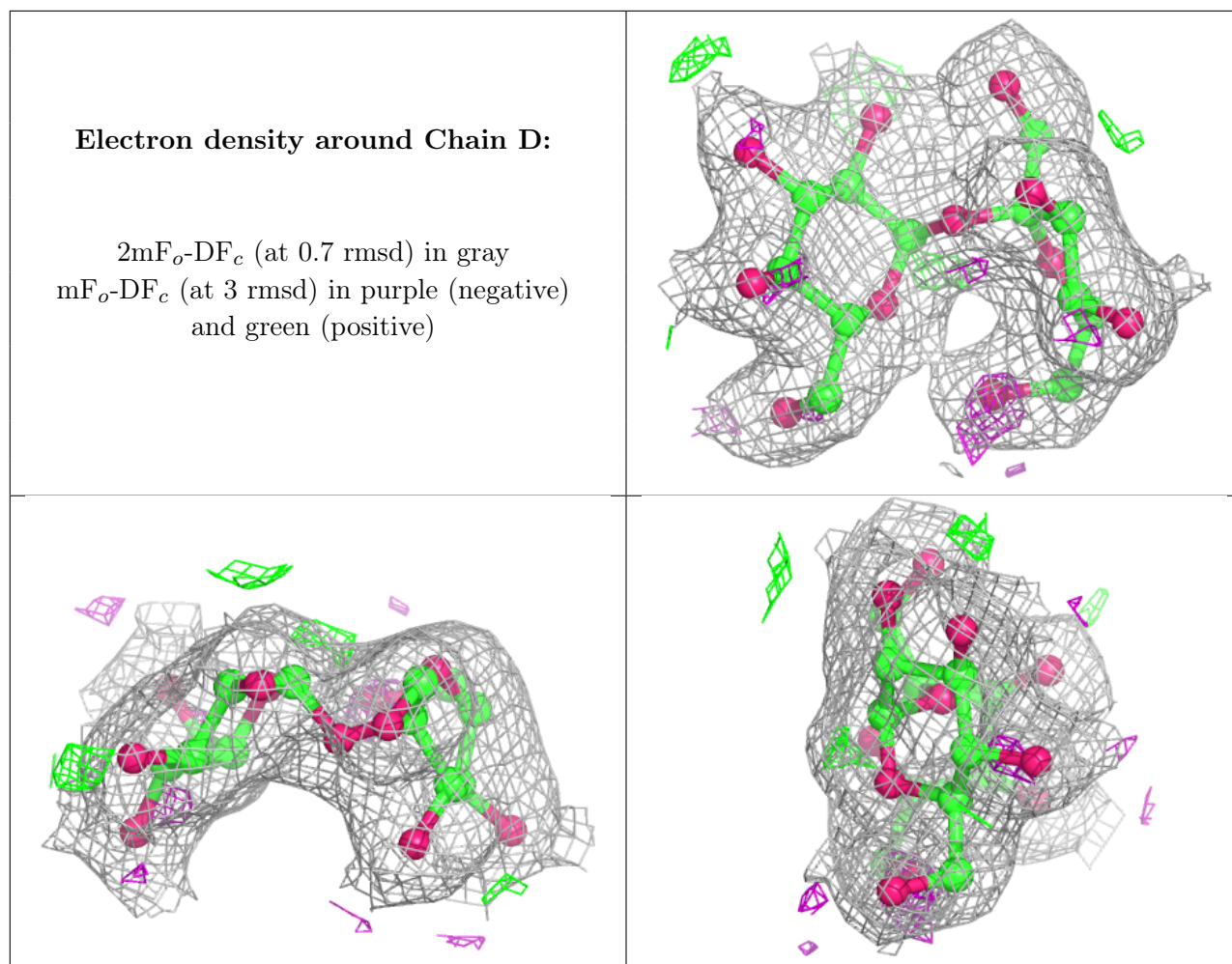
*Continued on next page...*

Continued from previous page...

Mol	Type	Chain	Res	Atoms	RSCC	RSR	B-factors( $\text{\AA}^2$ )	Q<0.9
2	GLC	D	1	11/12	0.97	0.14	21,26,28,31	0
2	FRU	D	2	12/12	0.97	0.11	20,23,30,33	0

The following is a graphical depiction of the model fit to experimental electron density for oligosaccharide. Each fit is shown from different orientation to approximate a three-dimensional view.





## 6.4 Ligands [i](#)

In the following table, the Atoms column lists the number of modelled atoms in the group and the number defined in the chemical component dictionary. The B-factors column lists the minimum, median, 95<sup>th</sup> percentile and maximum values of B factors of atoms in the group. The column labelled 'Q < 0.9' lists the number of atoms with occupancy less than 0.9.

Mol	Type	Chain	Res	Atoms	RSCC	RSR	B-factors(Å <sup>2</sup> )	Q<0.9
4	SO4	A	505	5/5	0.66	0.33	123,127,133,140	0
5	CXS	B	505[A]	14/14	0.74	0.25	66,90,116,117	14
5	CXS	B	505[B]	14/14	0.74	0.25	79,97,126,128	14
4	SO4	A	504	5/5	0.91	0.21	96,102,104,106	0
3	4T7	B	501	14/14	0.94	0.16	21,26,41,46	0
4	SO4	A	503	5/5	0.94	0.16	55,62,71,81	0
4	SO4	B	504	5/5	0.95	0.18	69,80,83,89	0
3	4T7	A	501	14/14	0.96	0.19	21,28,47,48	0
4	SO4	B	503	5/5	0.97	0.17	51,63,68,68	0

## 6.5 Other polymers [i](#)

There are no such residues in this entry.