



# Full wwPDB X-ray Structure Validation Report ⓘ

Dec 12, 2023 – 09:35 pm GMT

PDB ID : 3ZHB  
Title : R-imine reductase from *Streptomyces kanamyceticus* in complex with NADP.  
Authors : Rodriguez Mata, M.; Frank, A.; Grogan, G.  
Deposited on : 2012-12-20  
Resolution : 2.73 Å(reported)

This is a Full wwPDB X-ray Structure Validation Report for a publicly released PDB entry.

We welcome your comments at [validation@mail.wwpdb.org](mailto:validation@mail.wwpdb.org)

A user guide is available at

<https://www.wwpdb.org/validation/2017/XrayValidationReportHelp>

with specific help available everywhere you see the ⓘ symbol.

The types of validation reports are described at

<http://www.wwpdb.org/validation/2017/FAQs#types>.

---

The following versions of software and data (see [references ⓘ](#)) were used in the production of this report:

MolProbity : 4.02b-467  
Mogul : 1.8.4, CSD as541be (2020)  
Xtriage (Phenix) : 1.13  
EDS : 2.36  
buster-report : 1.1.7 (2018)  
Percentile statistics : 20191225.v01 (using entries in the PDB archive December 25th 2019)  
Refmac : 5.8.0158  
CCP4 : 7.0.044 (Gargrove)  
Ideal geometry (proteins) : Engh & Huber (2001)  
Ideal geometry (DNA, RNA) : Parkinson et al. (1996)  
Validation Pipeline (wwPDB-VP) : 2.36

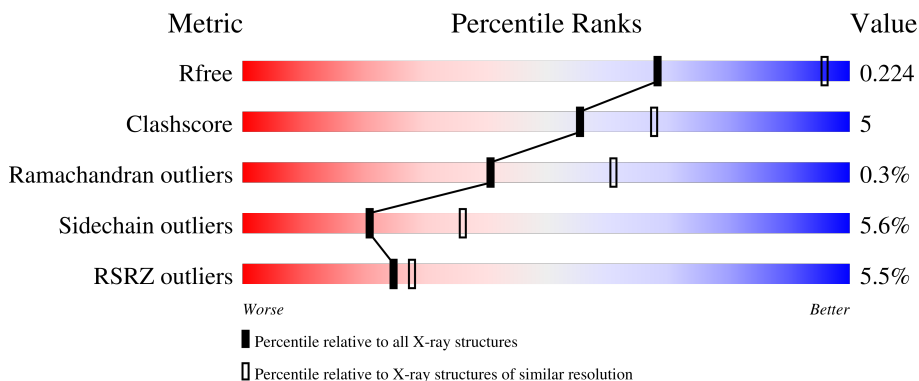
# 1 Overall quality at a glance i

The following experimental techniques were used to determine the structure:

*X-RAY DIFFRACTION*

The reported resolution of this entry is 2.73 Å.

Percentile scores (ranging between 0-100) for global validation metrics of the entry are shown in the following graphic. The table shows the number of entries on which the scores are based.



Metric	Whole archive (#Entries)	Similar resolution (#Entries, resolution range(Å))
$R_{free}$	130704	1271 (2.76-2.72)
Clashscore	141614	1322 (2.76-2.72)
Ramachandran outliers	138981	1297 (2.76-2.72)
Sidechain outliers	138945	1298 (2.76-2.72)
RSRZ outliers	127900	1243 (2.76-2.72)

The table below summarises the geometric issues observed across the polymeric chains and their fit to the electron density. The red, orange, yellow and green segments of the lower bar indicate the fraction of residues that contain outliers for  $\geq 3$ , 2, 1 and 0 types of geometric quality criteria respectively. A grey segment represents the fraction of residues that are not modelled. The numeric value for each fraction is indicated below the corresponding segment, with a dot representing fractions  $\leq 5\%$ . The upper red bar (where present) indicates the fraction of residues that have poor fit to the electron density. The numeric value is given above the bar.

Mol	Chain	Length	Quality of chain
1	A	309	<div style="display: flex; align-items: center;"> <div style="width: 10%; height: 10px; background-color: red; margin-right: 5px;"></div> <div style="width: 83%; height: 10px; background-color: green; margin-right: 5px;"></div> <div style="width: 9%; height: 10px; background-color: yellow; margin-right: 5px;"></div> <div style="width: 7%; height: 10px; background-color: grey;"></div> </div> <p style="text-align: center;">83%      9%   • 7%</p>
1	B	309	<div style="display: flex; align-items: center;"> <div style="width: 12%; height: 10px; background-color: red; margin-right: 5px;"></div> <div style="width: 82%; height: 10px; background-color: green; margin-right: 5px;"></div> <div style="width: 8%; height: 10px; background-color: yellow; margin-right: 5px;"></div> <div style="width: 8%; height: 10px; background-color: grey;"></div> </div> <p style="text-align: center;">82%      8%   • 8%</p>
1	C	309	<div style="display: flex; align-items: center;"> <div style="width: 8%; height: 10px; background-color: red; margin-right: 5px;"></div> <div style="width: 82%; height: 10px; background-color: green; margin-right: 5px;"></div> <div style="width: 9%; height: 10px; background-color: yellow; margin-right: 5px;"></div> <div style="width: 7%; height: 10px; background-color: grey;"></div> </div> <p style="text-align: center;">82%      9%   • 7%</p>
1	D	309	<div style="display: flex; align-items: center;"> <div style="width: 84%; height: 10px; background-color: green; margin-right: 5px;"></div> <div style="width: 10%; height: 10px; background-color: yellow; margin-right: 5px;"></div> <div style="width: 5%; height: 10px; background-color: grey;"></div> </div> <p style="text-align: center;">84%      10%   • 5%</p>

## 2 Entry composition [i](#)

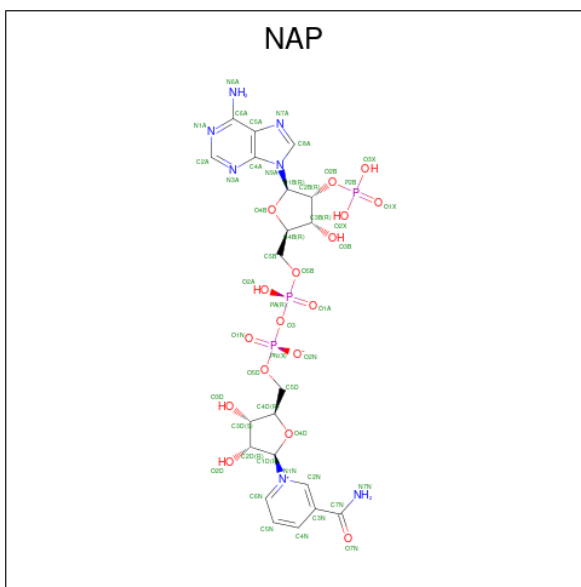
There are 3 unique types of molecules in this entry. The entry contains 8395 atoms, of which 0 are hydrogens and 0 are deuteriums.

In the tables below, the ZeroOcc column contains the number of atoms modelled with zero occupancy, the AltConf column contains the number of residues with at least one atom in alternate conformation and the Trace column contains the number of residues modelled with at most 2 atoms.

- Molecule 1 is a protein called R-IMINE REDUCTASE.

Mol	Chain	Residues	Atoms					ZeroOcc	AltConf	Trace
			Total	C	N	O	S			
1	A	288	Total	C	N	O	S	0	0	0
			2018	1278	351	384	5			
1	B	285	Total	C	N	O	S	0	0	0
			1998	1261	346	386	5			
1	C	286	Total	C	N	O	S	0	0	0
			1992	1260	345	382	5			
1	D	294	Total	C	N	O	S	0	0	0
			2083	1314	364	399	6			

- Molecule 2 is NADP NICOTINAMIDE-ADENINE-DINUCLEOTIDE PHOSPHATE (three-letter code: NAP) (formula: C<sub>21</sub>H<sub>28</sub>N<sub>7</sub>O<sub>17</sub>P<sub>3</sub>).



Mol	Chain	Residues	Atoms				ZeroOcc	AltConf	
			Total	C	N	O			P
2	A	1	Total	C	N	O	P	0	0
			48	21	7	17	3		
2	B	1	Total	C	N	O	P	0	0
			48	21	7	17	3		

*Continued on next page...*

*Continued from previous page...*

Mol	Chain	Residues	Atoms					ZeroOcc	AltConf
2	C	1	Total	C	N	O	P	0	0
			48	21	7	17	3		
2	D	1	Total	C	N	O	P	0	0
			48	21	7	17	3		

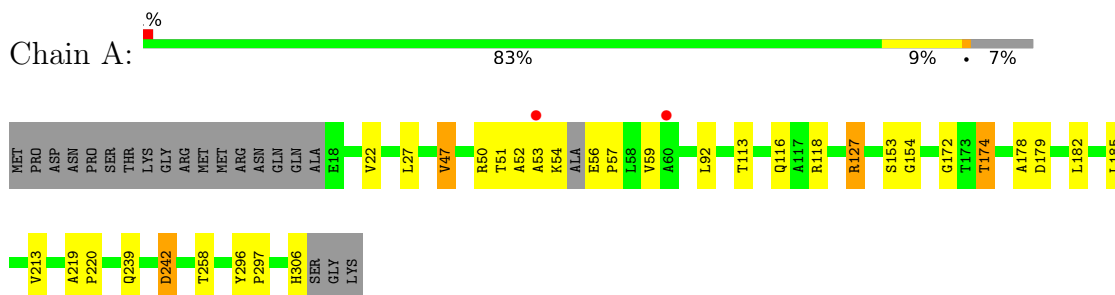
- Molecule 3 is water.

Mol	Chain	Residues	Atoms		ZeroOcc	AltConf
3	A	28	Total	O	0	0
			28	28		
3	B	21	Total	O	0	0
			21	21		
3	C	19	Total	O	0	0
			19	19		
3	D	44	Total	O	0	0
			44	44		

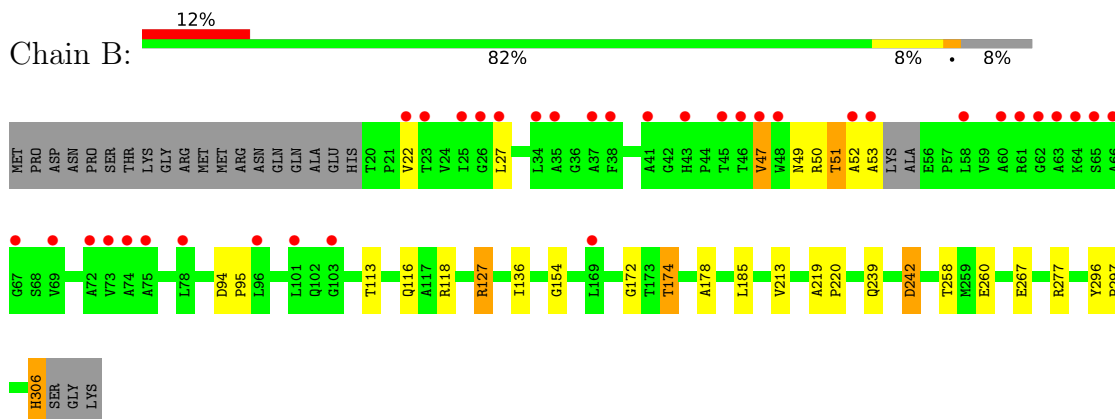
### 3 Residue-property plots i

These plots are drawn for all protein, RNA, DNA and oligosaccharide chains in the entry. The first graphic for a chain summarises the proportions of the various outlier classes displayed in the second graphic. The second graphic shows the sequence view annotated by issues in geometry and electron density. Residues are color-coded according to the number of geometric quality criteria for which they contain at least one outlier: green = 0, yellow = 1, orange = 2 and red = 3 or more. A red dot above a residue indicates a poor fit to the electron density ( $RSRZ > 2$ ). Stretches of 2 or more consecutive residues without any outlier are shown as a green connector. Residues present in the sample, but not in the model, are shown in grey.

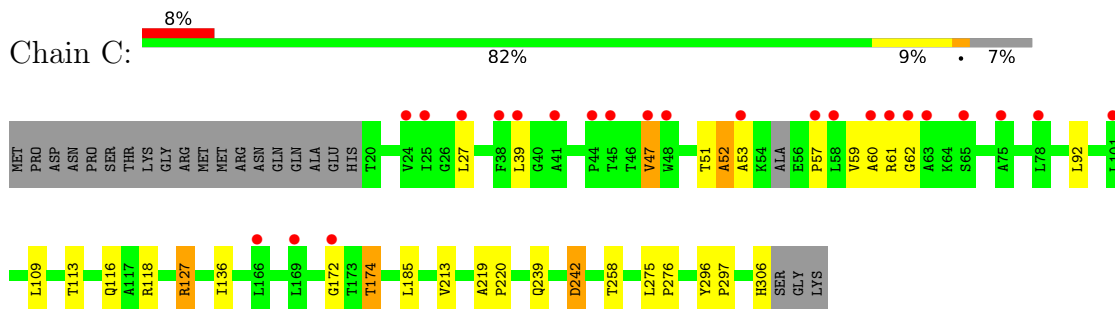
- Molecule 1: R-IMINE REDUCTASE



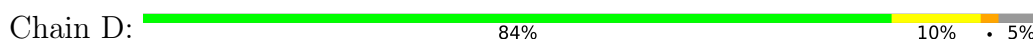
- Molecule 1: R-IMINE REDUCTASE

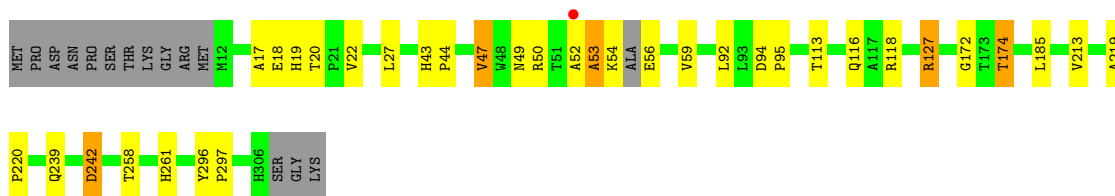


- Molecule 1: R-IMINE REDUCTASE



- Molecule 1: R-IMINE REDUCTASE





## 4 Data and refinement statistics

Property	Value	Source
Space group	C 1 2 1	Depositor
Cell constants a, b, c, $\alpha$ , $\beta$ , $\gamma$	205.79Å 130.31Å 77.70Å 90.00° 107.08° 90.00°	Depositor
Resolution (Å)	74.27 – 2.73 74.27 – 2.73	Depositor EDS
% Data completeness (in resolution range)	99.3 (74.27-2.73) 99.3 (74.27-2.73)	Depositor EDS
$R_{merge}$	0.08	Depositor
$R_{sym}$	(Not available)	Depositor
$\langle I/\sigma(I) \rangle$ <sup>1</sup>	2.26 (at 2.73Å)	Xtrriage
Refinement program	REFMAC 5.7.0029	Depositor
R, $R_{free}$	0.185 , 0.216 0.195 , 0.224	Depositor DCC
$R_{free}$ test set	2629 reflections (5.08%)	wwPDB-VP
Wilson B-factor (Å <sup>2</sup> )	52.8	Xtrriage
Anisotropy	0.645	Xtrriage
Bulk solvent $k_{sol}$ (e/Å <sup>3</sup> ), $B_{sol}$ (Å <sup>2</sup> )	0.35 , 49.9	EDS
L-test for twinning <sup>2</sup>	$\langle  L  \rangle = 0.49$ , $\langle L^2 \rangle = 0.32$	Xtrriage
Estimated twinning fraction	No twinning to report.	Xtrriage
$F_o, F_c$ correlation	0.95	EDS
Total number of atoms	8395	wwPDB-VP
Average B, all atoms (Å <sup>2</sup> )	57.0	wwPDB-VP

Xtrriage's analysis on translational NCS is as follows: *The largest off-origin peak in the Patterson function is 4.73% of the height of the origin peak. No significant pseudotranslation is detected.*

<sup>1</sup>Intensities estimated from amplitudes.

<sup>2</sup>Theoretical values of  $\langle |L| \rangle$ ,  $\langle L^2 \rangle$  for acentric reflections are 0.5, 0.333 respectively for untwinned datasets, and 0.375, 0.2 for perfectly twinned datasets.

## 5 Model quality [i](#)

### 5.1 Standard geometry [i](#)

Bond lengths and bond angles in the following residue types are not validated in this section: NAP

The Z score for a bond length (or angle) is the number of standard deviations the observed value is removed from the expected value. A bond length (or angle) with  $|Z| > 5$  is considered an outlier worth inspection. RMSZ is the root-mean-square of all Z scores of the bond lengths (or angles).

Mol	Chain	Bond lengths		Bond angles	
		RMSZ	# Z  >5	RMSZ	# Z  >5
1	A	0.74	0/2061	0.80	2/2823 (0.1%)
1	B	0.69	1/2041 (0.0%)	0.79	2/2796 (0.1%)
1	C	0.67	0/2034	0.79	3/2786 (0.1%)
1	D	0.78	0/2127	0.82	4/2909 (0.1%)
All	All	0.72	1/8263 (0.0%)	0.80	11/11314 (0.1%)

All (1) bond length outliers are listed below:

Mol	Chain	Res	Type	Atoms	Z	Observed(Å)	Ideal(Å)
1	B	267	GLU	CD-OE1	5.12	1.31	1.25

All (11) bond angle outliers are listed below:

Mol	Chain	Res	Type	Atoms	Z	Observed(°)	Ideal(°)
1	A	118	ARG	NE-CZ-NH1	8.54	124.57	120.30
1	D	118	ARG	NE-CZ-NH1	7.66	124.13	120.30
1	D	127	ARG	NE-CZ-NH1	7.05	123.83	120.30
1	C	118	ARG	NE-CZ-NH1	6.87	123.73	120.30
1	A	127	ARG	NE-CZ-NH1	6.20	123.40	120.30
1	C	127	ARG	NE-CZ-NH1	6.12	123.36	120.30
1	D	127	ARG	NE-CZ-NH2	-5.96	117.32	120.30
1	D	56	GLU	C-N-CD	5.65	140.27	128.40
1	B	118	ARG	NE-CZ-NH1	5.57	123.08	120.30
1	C	127	ARG	NE-CZ-NH2	-5.51	117.55	120.30
1	B	127	ARG	NE-CZ-NH1	5.40	123.00	120.30

There are no chirality outliers.

There are no planarity outliers.



## 5.2 Too-close contacts [i](#)

In the following table, the Non-H and H(model) columns list the number of non-hydrogen atoms and hydrogen atoms in the chain respectively. The H(added) column lists the number of hydrogen atoms added and optimized by MolProbity. The Clashes column lists the number of clashes within the asymmetric unit, whereas Symm-Clashes lists symmetry-related clashes.

Mol	Chain	Non-H	H(model)	H(added)	Clashes	Symm-Clashes
1	A	2018	0	1950	19	0
1	B	1998	0	1912	18	0
1	C	1992	0	1914	21	0
1	D	2083	0	2015	25	0
2	A	48	0	25	3	0
2	B	48	0	25	4	0
2	C	48	0	25	1	0
2	D	48	0	25	5	0
3	A	28	0	0	0	0
3	B	21	0	0	2	0
3	C	19	0	0	0	0
3	D	44	0	0	2	0
All	All	8395	0	7891	83	0

The all-atom clashscore is defined as the number of clashes found per 1000 atoms (including hydrogen atoms). The all-atom clashscore for this structure is 5.

All (83) close contacts within the same asymmetric unit are listed below, sorted by their clash magnitude.

Atom-1	Atom-2	Interatomic distance (Å)	Clash overlap (Å)
1:C:39:LEU:HD13	1:C:61:ARG:O	1.59	0.99
1:C:39:LEU:HD21	1:C:62:GLY:O	1.61	0.98
1:C:39:LEU:CD2	1:C:62:GLY:O	2.24	0.84
1:D:52:ALA:O	1:D:53:ALA:CB	2.33	0.77
1:A:27:LEU:HD11	1:A:47:VAL:HG13	1.67	0.77
1:D:27:LEU:HD11	1:D:47:VAL:HG13	1.67	0.74
1:C:27:LEU:HD11	1:C:47:VAL:HG13	1.69	0.73
1:B:27:LEU:HD11	1:B:47:VAL:HG13	1.68	0.72
1:D:17:ALA:C	1:D:19:HIS:H	1.91	0.72
1:B:49:ASN:ND2	2:B:1307:NAP:O2X	2.23	0.71
1:C:92:LEU:HD21	2:C:1307:NAP:H2A	1.72	0.71
1:D:52:ALA:O	1:D:53:ALA:HB3	1.93	0.69
1:D:50:ARG:HD3	2:D:1307:NAP:C2A	2.24	0.67
1:B:51:THR:OG1	2:B:1307:NAP:O2X	2.12	0.67
1:C:39:LEU:CD1	1:C:61:ARG:O	2.40	0.65

*Continued on next page...*

*Continued from previous page...*

Atom-1	Atom-2	Interatomic distance (Å)	Clash overlap (Å)
1:C:57:PRO:O	1:C:60:ALA:HB3	1.96	0.64
1:C:172:GLY:O	1:C:174:THR:HG22	1.98	0.64
1:B:172:GLY:O	1:B:174:THR:HG22	1.98	0.63
1:D:172:GLY:O	1:D:174:THR:HG22	1.99	0.63
1:D:17:ALA:C	1:D:19:HIS:N	2.52	0.62
1:A:172:GLY:O	1:A:174:THR:HG22	2.00	0.61
1:D:17:ALA:O	1:D:19:HIS:N	2.33	0.61
1:B:306:HIS:CE1	3:B:2021:HOH:O	2.53	0.61
1:C:51:THR:O	1:C:51:THR:HG22	2.00	0.61
1:A:51:THR:HG22	1:A:51:THR:O	2.02	0.60
1:D:92:LEU:HD21	2:D:1307:NAP:H2A	1.84	0.59
1:C:52:ALA:O	1:C:53:ALA:HB3	2.03	0.59
1:D:113:THR:H	1:D:116:GLN:HE21	1.52	0.57
1:D:261:HIS:HD2	3:D:2040:HOH:O	1.87	0.57
1:B:52:ALA:O	1:B:53:ALA:HB3	2.05	0.56
1:A:56:GLU:CB	1:A:57:PRO:CD	2.83	0.56
1:A:153:SER:HB2	1:A:179:ASP:O	2.07	0.55
1:A:52:ALA:O	1:A:53:ALA:HB3	2.08	0.54
1:A:296:TYR:N	1:A:297:PRO:CD	2.71	0.54
1:A:179:ASP:HB3	1:A:182:LEU:HG	1.89	0.54
1:B:113:THR:H	1:B:116:GLN:HE21	1.55	0.54
1:D:50:ARG:NH1	2:D:1307:NAP:C6A	2.71	0.53
1:A:113:THR:H	1:A:116:GLN:HE21	1.57	0.53
1:C:113:THR:H	1:C:116:GLN:HE21	1.59	0.51
1:B:296:TYR:N	1:B:297:PRO:CD	2.74	0.50
1:A:50:ARG:HB3	2:A:1307:NAP:O3X	2.12	0.50
1:A:54:LYS:NZ	2:A:1307:NAP:O2X	2.40	0.50
1:B:50:ARG:NE	2:B:1307:NAP:O3X	2.37	0.50
1:A:56:GLU:CB	1:A:57:PRO:HD2	2.42	0.49
1:C:27:LEU:HD11	1:C:47:VAL:CG1	2.41	0.49
1:D:27:LEU:HD11	1:D:47:VAL:CG1	2.40	0.49
1:A:27:LEU:HD11	1:A:47:VAL:CG1	2.40	0.48
1:B:242:ASP:N	1:B:242:ASP:OD1	2.47	0.48
1:A:242:ASP:OD1	1:A:242:ASP:N	2.46	0.47
1:D:296:TYR:N	1:D:297:PRO:CD	2.78	0.47
1:B:27:LEU:HD11	1:B:47:VAL:CG1	2.41	0.47
1:B:113:THR:OG1	1:B:116:GLN:HG3	2.15	0.47
1:D:242:ASP:N	1:D:242:ASP:OD1	2.46	0.46
1:D:17:ALA:HB1	1:D:43:HIS:CE1	2.50	0.46
1:C:296:TYR:N	1:C:297:PRO:CD	2.79	0.46
1:D:17:ALA:HB2	3:D:2002:HOH:O	2.15	0.46

*Continued on next page...*

Continued from previous page...

Atom-1	Atom-2	Interatomic distance (Å)	Clash overlap (Å)
1:A:219:ALA:HB3	1:A:220:PRO:HD3	1.97	0.45
1:C:113:THR:OG1	1:C:116:GLN:HG3	2.16	0.45
1:B:219:ALA:HB3	1:B:220:PRO:HD3	1.99	0.45
1:C:242:ASP:N	1:C:242:ASP:OD1	2.50	0.45
1:D:219:ALA:HB3	1:D:220:PRO:HD3	1.99	0.44
1:D:27:LEU:HD12	1:D:49:ASN:HB2	1.99	0.44
1:D:94:ASP:N	1:D:95:PRO:CD	2.80	0.44
1:A:92:LEU:HD21	2:A:1307:NAP:H2A	2.00	0.43
1:D:50:ARG:NH1	2:D:1307:NAP:C5A	2.82	0.43
1:C:219:ALA:HB3	1:C:220:PRO:HD3	2.01	0.43
1:A:113:THR:OG1	1:A:116:GLN:HG3	2.18	0.43
1:D:239:GLN:O	1:D:242:ASP:O	2.36	0.43
1:B:239:GLN:O	1:B:242:ASP:O	2.37	0.42
1:D:113:THR:OG1	1:D:116:GLN:HG3	2.18	0.42
1:B:277:ARG:NE	3:B:2020:HOH:O	2.33	0.42
1:A:239:GLN:O	1:A:242:ASP:O	2.38	0.42
1:B:154:GLY:O	1:B:178:ALA:HA	2.20	0.42
1:A:154:GLY:O	1:A:178:ALA:HA	2.20	0.42
1:B:136:ILE:O	2:B:1307:NAP:H5N	2.20	0.42
1:B:94:ASP:N	1:B:95:PRO:CD	2.83	0.41
1:D:50:ARG:HH11	2:D:1307:NAP:C6A	2.33	0.41
1:C:52:ALA:O	1:C:53:ALA:CB	2.67	0.41
1:D:52:ALA:O	1:D:53:ALA:HB2	2.19	0.41
1:C:275:LEU:HB3	1:C:276:PRO:HD3	2.03	0.41
1:C:239:GLN:O	1:C:242:ASP:O	2.39	0.41
1:C:39:LEU:HD22	1:C:62:GLY:O	2.15	0.40
1:C:109:LEU:HD13	1:C:136:ILE:HD11	2.03	0.40

There are no symmetry-related clashes.

## 5.3 Torsion angles [i](#)

### 5.3.1 Protein backbone [i](#)

In the following table, the Percentiles column shows the percent Ramachandran outliers of the chain as a percentile score with respect to all X-ray entries followed by that with respect to entries of similar resolution.

The Analysed column shows the number of residues for which the backbone conformation was analysed, and the total number of residues.

Mol	Chain	Analysed	Favoured	Allowed	Outliers	Percentiles	
1	A	284/309 (92%)	274 (96%)	10 (4%)	0	100	100
1	B	281/309 (91%)	273 (97%)	8 (3%)	0	100	100
1	C	282/309 (91%)	275 (98%)	6 (2%)	1 (0%)	34	55
1	D	290/309 (94%)	282 (97%)	6 (2%)	2 (1%)	22	40
All	All	1137/1236 (92%)	1104 (97%)	30 (3%)	3 (0%)	41	61

All (3) Ramachandran outliers are listed below:

Mol	Chain	Res	Type
1	D	53	ALA
1	D	18	GLU
1	C	52	ALA

### 5.3.2 Protein sidechains [i](#)

In the following table, the Percentiles column shows the percent sidechain outliers of the chain as a percentile score with respect to all X-ray entries followed by that with respect to entries of similar resolution.

The Analysed column shows the number of residues for which the sidechain conformation was analysed, and the total number of residues.

Mol	Chain	Analysed	Rotameric	Outliers	Percentiles	
1	A	186/214 (87%)	176 (95%)	10 (5%)	22	38
1	B	184/214 (86%)	173 (94%)	11 (6%)	19	33
1	C	182/214 (85%)	173 (95%)	9 (5%)	25	43
1	D	195/214 (91%)	183 (94%)	12 (6%)	18	32
All	All	747/856 (87%)	705 (94%)	42 (6%)	21	36

All (42) residues with a non-rotameric sidechain are listed below:

Mol	Chain	Res	Type
1	A	22	VAL
1	A	47	VAL
1	A	59	VAL
1	A	127	ARG
1	A	174	THR
1	A	185	LEU
1	A	213	VAL
1	A	242	ASP

*Continued on next page...*

*Continued from previous page...*

<b>Mol</b>	<b>Chain</b>	<b>Res</b>	<b>Type</b>
1	A	258	THR
1	A	306	HIS
1	B	22	VAL
1	B	47	VAL
1	B	51	THR
1	B	127	ARG
1	B	174	THR
1	B	185	LEU
1	B	213	VAL
1	B	242	ASP
1	B	258	THR
1	B	260	GLU
1	B	306	HIS
1	C	47	VAL
1	C	59	VAL
1	C	127	ARG
1	C	174	THR
1	C	185	LEU
1	C	213	VAL
1	C	242	ASP
1	C	258	THR
1	C	306	HIS
1	D	20	THR
1	D	22	VAL
1	D	44	PRO
1	D	47	VAL
1	D	54	LYS
1	D	59	VAL
1	D	127	ARG
1	D	174	THR
1	D	185	LEU
1	D	213	VAL
1	D	242	ASP
1	D	258	THR

Sometimes sidechains can be flipped to improve hydrogen bonding and reduce clashes. All (8) such sidechains are listed below:

<b>Mol</b>	<b>Chain</b>	<b>Res</b>	<b>Type</b>
1	A	116	GLN
1	A	203	GLN
1	B	116	GLN
1	B	203	GLN

*Continued on next page...*

Continued from previous page...

Mol	Chain	Res	Type
1	C	116	GLN
1	C	203	GLN
1	D	116	GLN
1	D	203	GLN

### 5.3.3 RNA [i](#)

There are no RNA molecules in this entry.

### 5.4 Non-standard residues in protein, DNA, RNA chains [i](#)

There are no non-standard protein/DNA/RNA residues in this entry.

### 5.5 Carbohydrates [i](#)

There are no monosaccharides in this entry.

### 5.6 Ligand geometry [i](#)

4 ligands are modelled in this entry.

In the following table, the Counts columns list the number of bonds (or angles) for which Mogul statistics could be retrieved, the number of bonds (or angles) that are observed in the model and the number of bonds (or angles) that are defined in the Chemical Component Dictionary. The Link column lists molecule types, if any, to which the group is linked. The Z score for a bond length (or angle) is the number of standard deviations the observed value is removed from the expected value. A bond length (or angle) with  $|Z| > 2$  is considered an outlier worth inspection. RMSZ is the root-mean-square of all Z scores of the bond lengths (or angles).

Mol	Type	Chain	Res	Link	Bond lengths			Bond angles		
					Counts	RMSZ	# $ Z  > 2$	Counts	RMSZ	# $ Z  > 2$
2	NAP	B	1307	-	45,52,52	1.16	3 (6%)	56,80,80	1.48	12 (21%)
2	NAP	D	1307	-	45,52,52	1.71	14 (31%)	56,80,80	1.32	7 (12%)
2	NAP	A	1307	-	45,52,52	1.02	3 (6%)	56,80,80	1.51	11 (19%)
2	NAP	C	1307	-	45,52,52	0.93	1 (2%)	56,80,80	1.59	10 (17%)

In the following table, the Chirals column lists the number of chiral outliers, the number of chiral centers analysed, the number of these observed in the model and the number defined in the Chemical Component Dictionary. Similar counts are reported in the Torsion and Rings columns. '-' means no outliers of that kind were identified.

Mol	Type	Chain	Res	Link	Chirals	Torsions	Rings
2	NAP	B	1307	-	-	12/31/67/67	0/5/5/5
2	NAP	D	1307	-	-	2/31/67/67	0/5/5/5
2	NAP	A	1307	-	-	6/31/67/67	0/5/5/5
2	NAP	C	1307	-	-	4/31/67/67	0/5/5/5

All (21) bond length outliers are listed below:

Mol	Chain	Res	Type	Atoms	Z	Observed(Å)	Ideal(Å)
2	D	1307	NAP	C2D-C1D	-3.47	1.48	1.53
2	A	1307	NAP	P2B-O2B	2.90	1.64	1.59
2	D	1307	NAP	P2B-O2B	-2.84	1.53	1.59
2	B	1307	NAP	C2N-N1N	-2.63	1.31	1.35
2	D	1307	NAP	P2B-O2X	-2.61	1.44	1.54
2	D	1307	NAP	O4B-C4B	-2.59	1.39	1.45
2	D	1307	NAP	C3N-C7N	-2.55	1.46	1.50
2	D	1307	NAP	C2N-N1N	-2.54	1.31	1.35
2	A	1307	NAP	C2A-N3A	2.53	1.36	1.32
2	D	1307	NAP	P2B-O3X	-2.49	1.45	1.54
2	D	1307	NAP	PN-O2N	-2.42	1.43	1.55
2	B	1307	NAP	C2D-C1D	-2.39	1.50	1.53
2	D	1307	NAP	PA-O2A	-2.33	1.44	1.55
2	D	1307	NAP	C5A-N7A	-2.21	1.31	1.39
2	D	1307	NAP	O4D-C4D	-2.21	1.40	1.45
2	D	1307	NAP	P2B-O1X	-2.16	1.43	1.50
2	C	1307	NAP	C5A-C4A	2.16	1.46	1.40
2	B	1307	NAP	C3N-C7N	-2.14	1.47	1.50
2	D	1307	NAP	C4A-N3A	-2.07	1.32	1.35
2	D	1307	NAP	C2D-C3D	-2.02	1.47	1.53
2	A	1307	NAP	C5A-C4A	2.02	1.46	1.40

All (40) bond angle outliers are listed below:

Mol	Chain	Res	Type	Atoms	Z	Observed(°)	Ideal(°)
2	A	1307	NAP	C5A-C6A-N6A	-4.55	113.44	120.35
2	C	1307	NAP	C1B-N9A-C4A	-4.35	119.01	126.64
2	D	1307	NAP	O4D-C1D-C2D	-4.26	100.70	106.93
2	C	1307	NAP	N3A-C2A-N1A	-3.92	122.55	128.68
2	B	1307	NAP	N3A-C2A-N1A	-3.87	122.63	128.68
2	C	1307	NAP	PN-O3-PA	-3.80	119.78	132.83
2	C	1307	NAP	C5A-C6A-N6A	-3.55	114.96	120.35
2	D	1307	NAP	N3A-C2A-N1A	-3.28	123.55	128.68
2	C	1307	NAP	N6A-C6A-N1A	3.00	124.81	118.57

*Continued on next page...*

Continued from previous page...

Mol	Chain	Res	Type	Atoms	Z	Observed(°)	Ideal(°)
2	A	1307	NAP	O7N-C7N-C3N	-2.99	116.05	119.63
2	C	1307	NAP	C3B-C2B-C1B	-2.99	97.27	102.89
2	B	1307	NAP	C3B-C2B-C1B	-2.96	97.32	102.89
2	A	1307	NAP	O4B-C4B-C5B	-2.96	99.65	109.37
2	A	1307	NAP	N3A-C2A-N1A	-2.93	124.10	128.68
2	A	1307	NAP	C1B-N9A-C4A	-2.88	121.58	126.64
2	B	1307	NAP	PN-O3-PA	-2.84	123.10	132.83
2	A	1307	NAP	N6A-C6A-N1A	2.78	124.34	118.57
2	A	1307	NAP	PN-O3-PA	-2.71	123.52	132.83
2	A	1307	NAP	O4B-C1B-C2B	-2.71	101.89	106.59
2	B	1307	NAP	O4B-C1B-C2B	-2.69	101.92	106.59
2	B	1307	NAP	C5B-C4B-C3B	-2.59	105.48	115.18
2	B	1307	NAP	C2A-N1A-C6A	2.57	123.15	118.75
2	B	1307	NAP	O3D-C3D-C2D	-2.56	103.53	111.82
2	B	1307	NAP	C2N-C3N-C4N	2.49	121.08	118.26
2	C	1307	NAP	O2A-PA-O1A	2.47	124.47	112.24
2	A	1307	NAP	O3X-P2B-O1X	2.47	120.35	110.68
2	A	1307	NAP	O2A-PA-O1A	2.45	124.36	112.24
2	D	1307	NAP	O2N-PN-O1N	2.39	124.06	112.24
2	D	1307	NAP	O2B-P2B-O1X	-2.37	100.25	109.39
2	B	1307	NAP	C4A-C5A-N7A	-2.36	106.94	109.40
2	B	1307	NAP	C5N-C4N-C3N	-2.33	117.58	120.34
2	C	1307	NAP	O4B-C4B-C3B	2.27	109.61	105.11
2	A	1307	NAP	PA-O5B-C5B	-2.25	108.46	121.68
2	C	1307	NAP	O4B-C4B-C5B	-2.23	102.05	109.37
2	B	1307	NAP	O4D-C1D-C2D	-2.20	103.71	106.93
2	D	1307	NAP	C4A-C5A-N7A	-2.15	107.16	109.40
2	C	1307	NAP	C3D-C2D-C1D	2.09	104.12	100.98
2	D	1307	NAP	C3B-C2B-C1B	-2.06	99.01	102.89
2	D	1307	NAP	O3B-C3B-C2B	-2.06	105.32	111.17
2	B	1307	NAP	C6N-N1N-C2N	-2.04	120.11	121.97

There are no chirality outliers.

All (24) torsion outliers are listed below:

Mol	Chain	Res	Type	Atoms
2	A	1307	NAP	C2B-O2B-P2B-O2X
2	A	1307	NAP	C5D-O5D-PN-O1N
2	A	1307	NAP	C5D-O5D-PN-O2N
2	A	1307	NAP	O4D-C1D-N1N-C2N
2	B	1307	NAP	C5B-O5B-PA-O2A
2	B	1307	NAP	C5B-O5B-PA-O3

Continued on next page...



*Continued from previous page...*

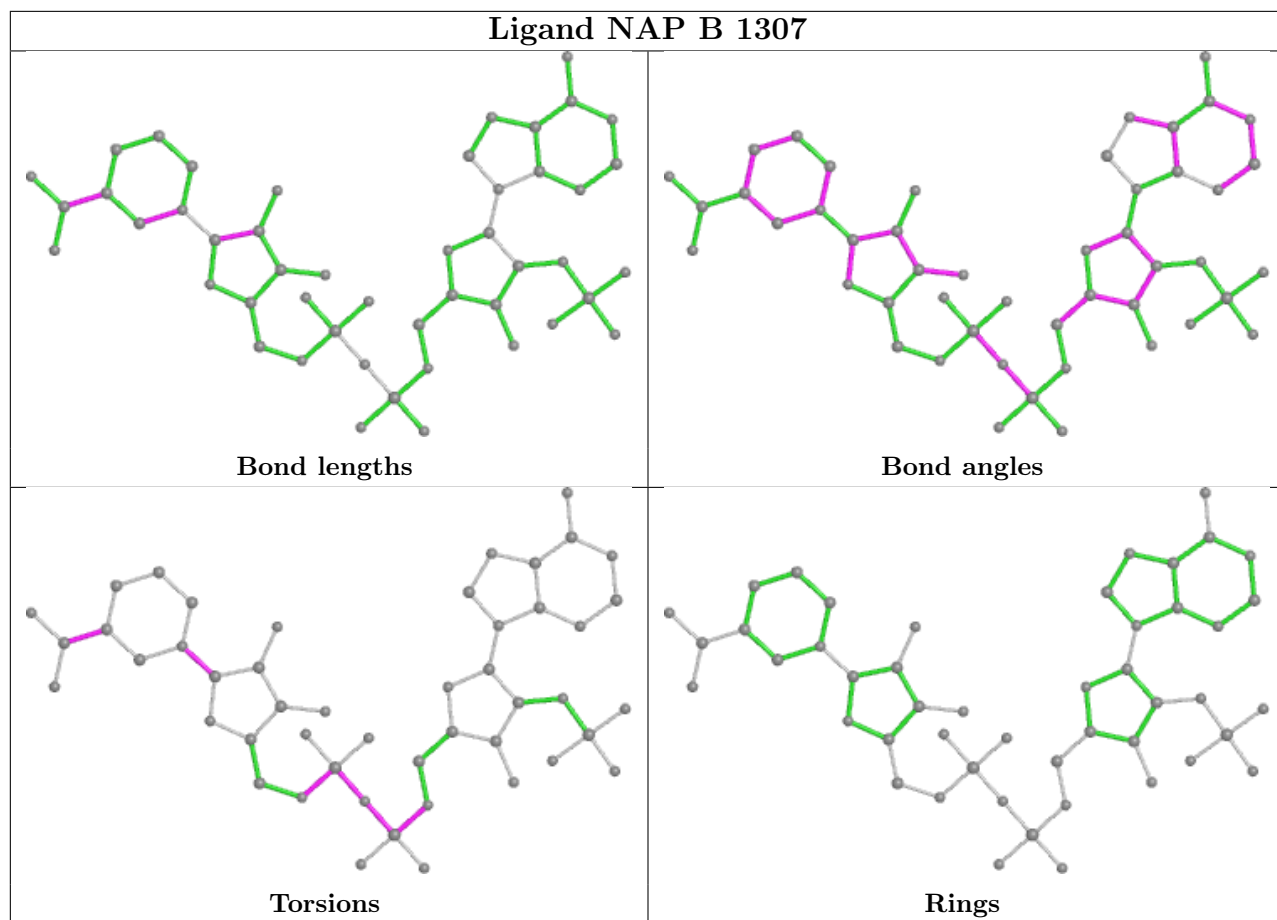
Mol	Chain	Res	Type	Atoms
2	B	1307	NAP	C5D-O5D-PN-O3
2	B	1307	NAP	O4D-C1D-N1N-C2N
2	C	1307	NAP	C5B-O5B-PA-O2A
2	C	1307	NAP	O4D-C1D-N1N-C2N
2	B	1307	NAP	PN-O3-PA-O5B
2	D	1307	NAP	C2B-O2B-P2B-O2X
2	A	1307	NAP	O4B-C4B-C5B-O5B
2	B	1307	NAP	PA-O3-PN-O2N
2	B	1307	NAP	C5D-O5D-PN-O1N
2	B	1307	NAP	PA-O3-PN-O1N
2	B	1307	NAP	C4N-C3N-C7N-O7N
2	C	1307	NAP	O4B-C4B-C5B-O5B
2	A	1307	NAP	C5D-O5D-PN-O3
2	B	1307	NAP	C2D-C1D-N1N-C2N
2	B	1307	NAP	C2D-C1D-N1N-C6N
2	C	1307	NAP	C2B-O2B-P2B-O3X
2	D	1307	NAP	O4B-C4B-C5B-O5B
2	B	1307	NAP	C4N-C3N-C7N-N7N

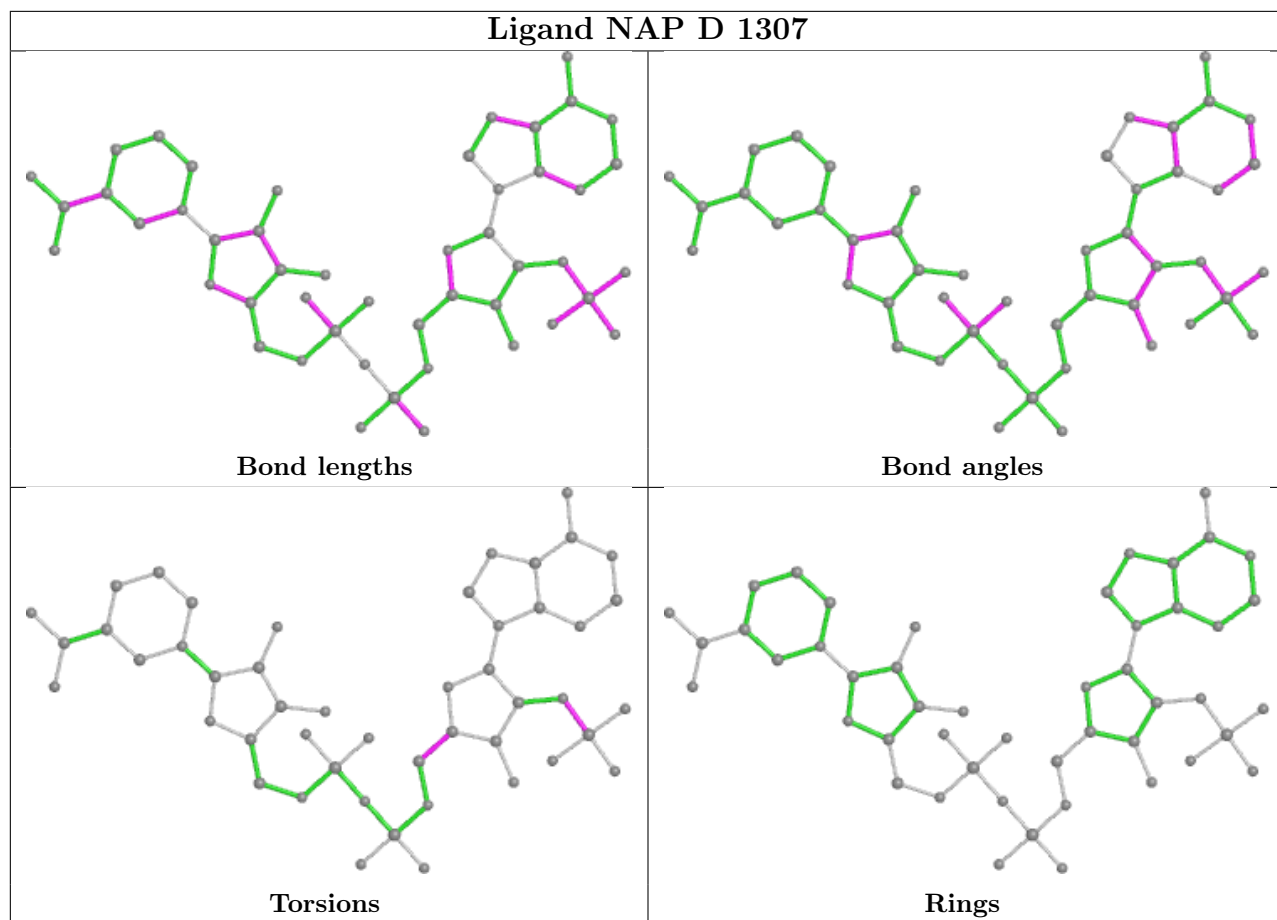
There are no ring outliers.

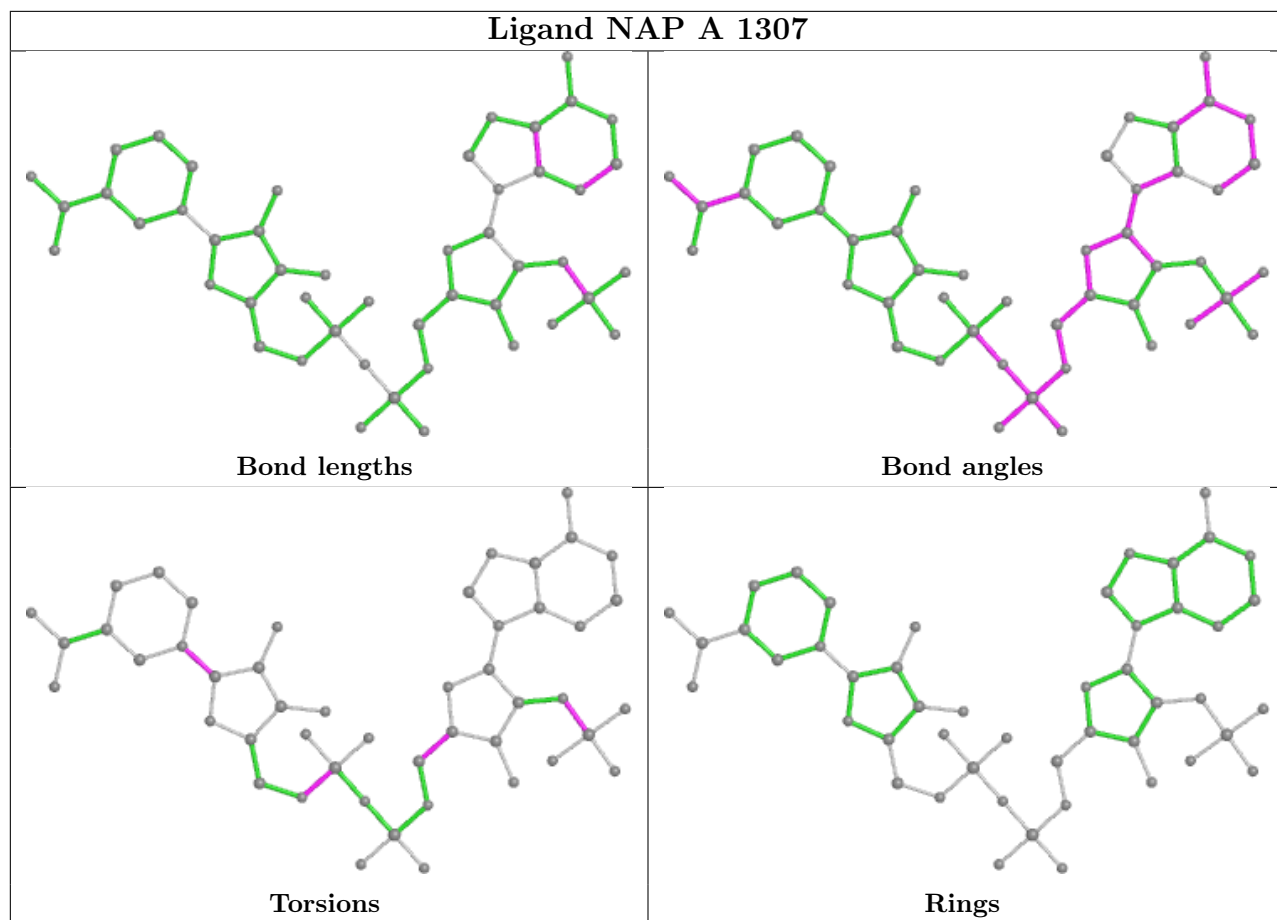
4 monomers are involved in 13 short contacts:

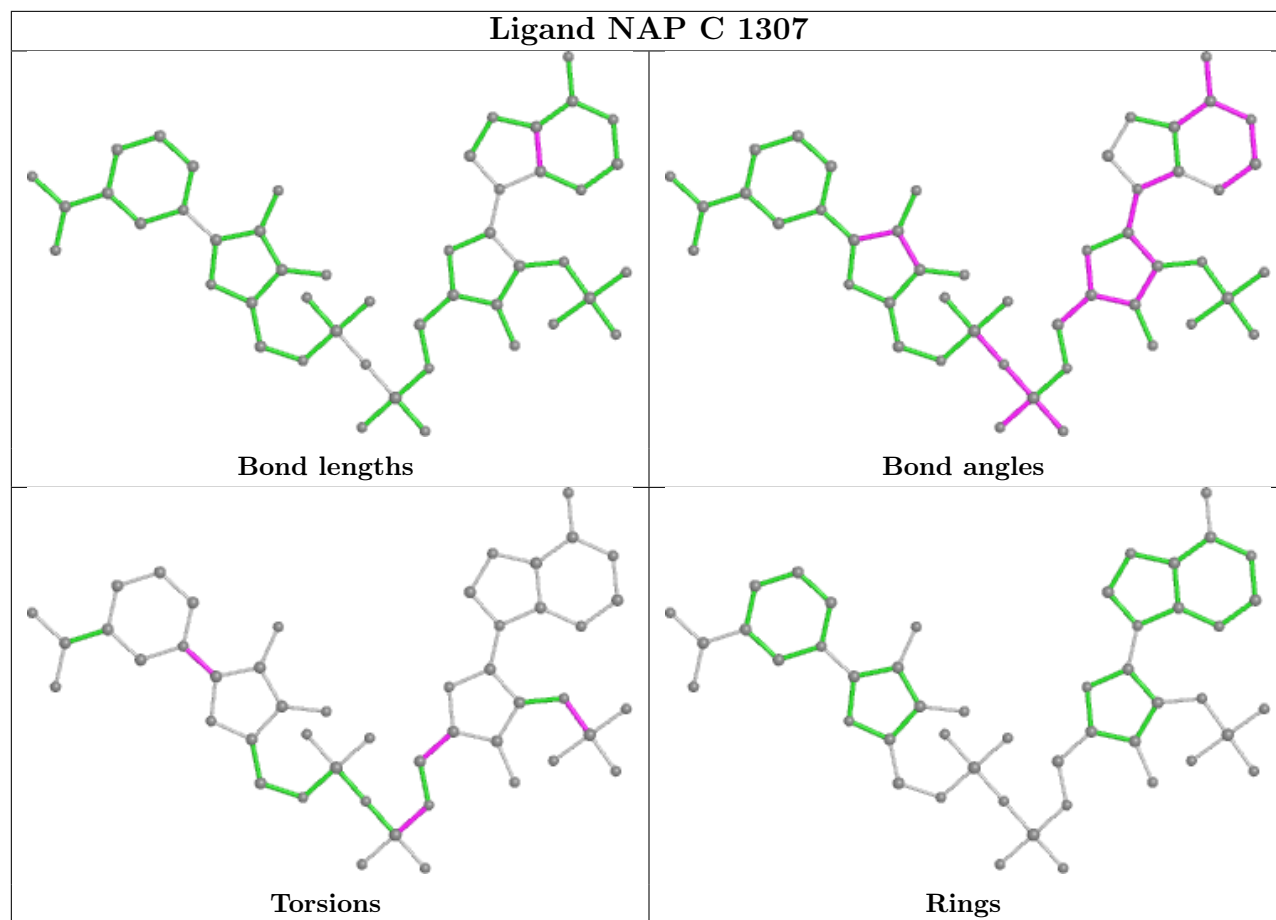
Mol	Chain	Res	Type	Clashes	Symm-Clashes
2	B	1307	NAP	4	0
2	D	1307	NAP	5	0
2	A	1307	NAP	3	0
2	C	1307	NAP	1	0

The following is a two-dimensional graphical depiction of Mogul quality analysis of bond lengths, bond angles, torsion angles, and ring geometry for all instances of the Ligand of Interest. In addition, ligands with molecular weight > 250 and outliers as shown on the validation Tables will also be included. For torsion angles, if less than 5% of the Mogul distribution of torsion angles is within 10 degrees of the torsion angle in question, then that torsion angle is considered an outlier. Any bond that is central to one or more torsion angles identified as an outlier by Mogul will be highlighted in the graph. For rings, the root-mean-square deviation (RMSD) between the ring in question and similar rings identified by Mogul is calculated over all ring torsion angles. If the average RMSD is greater than 60 degrees and the minimal RMSD between the ring in question and any Mogul-identified rings is also greater than 60 degrees, then that ring is considered an outlier. The outliers are highlighted in purple. The color gray indicates Mogul did not find sufficient equivalents in the CSD to analyse the geometry.









## 5.7 Other polymers [\(i\)](#)

There are no such residues in this entry.

## 5.8 Polymer linkage issues [\(i\)](#)

There are no chain breaks in this entry.

## 6 Fit of model and data

### 6.1 Protein, DNA and RNA chains

In the following table, the column labelled ‘#RSRZ > 2’ contains the number (and percentage) of RSRZ outliers, followed by percent RSRZ outliers for the chain as percentile scores relative to all X-ray entries and entries of similar resolution. The OWAB column contains the minimum, median, 95<sup>th</sup> percentile and maximum values of the occupancy-weighted average B-factor per residue. The column labelled ‘Q < 0.9’ lists the number of (and percentage) of residues with an average occupancy less than 0.9.

Mol	Chain	Analysed	<RSRZ>	#RSRZ>2	OWAB(Å <sup>2</sup> )	Q<0.9
1	A	288/309 (93%)	0.02	2 (0%) <span style="border: 1px solid blue; padding: 2px;">87</span> <span style="border: 1px solid blue; padding: 2px;">90</span>	29, 50, 82, 98	0
1	B	285/309 (92%)	0.58	36 (12%) <span style="border: 1px solid red; padding: 2px;">3</span> <span style="border: 1px solid red; padding: 2px;">4</span>	31, 61, 112, 127	0
1	C	286/309 (92%)	0.41	24 (8%) <span style="border: 1px solid red; padding: 2px;">11</span> <span style="border: 1px solid red; padding: 2px;">12</span>	31, 61, 104, 123	0
1	D	294/309 (95%)	0.02	1 (0%) <span style="border: 1px solid blue; padding: 2px;">94</span> <span style="border: 1px solid blue; padding: 2px;">96</span>	26, 42, 70, 107	0
All	All	1153/1236 (93%)	0.25	63 (5%) <span style="border: 1px solid red; padding: 2px;">25</span> <span style="border: 1px solid red; padding: 2px;">28</span>	26, 51, 102, 127	0

All (63) RSRZ outliers are listed below:

Mol	Chain	Res	Type	RSRZ
1	C	53	ALA	6.5
1	B	58	LEU	5.2
1	B	60	ALA	4.9
1	B	53	ALA	4.9
1	B	63	ALA	4.5
1	C	60	ALA	4.3
1	B	69	VAL	4.3
1	B	52	ALA	4.3
1	C	38	PHE	4.1
1	D	52	ALA	4.0
1	B	66	ALA	4.0
1	B	45	THR	3.9
1	B	67	GLY	3.8
1	B	46	THR	3.7
1	B	34	LEU	3.6
1	B	27	LEU	3.6
1	B	22	VAL	3.6
1	C	62	GLY	3.5
1	C	166	LEU	3.3
1	B	38	PHE	3.2
1	C	45	THR	3.2

*Continued on next page...*

*Continued from previous page...*

<b>Mol</b>	<b>Chain</b>	<b>Res</b>	<b>Type</b>	<b>RSRZ</b>
1	B	72	ALA	3.2
1	B	75	ALA	3.2
1	C	169	LEU	3.1
1	B	48	TRP	3.1
1	B	47	VAL	2.8
1	C	44	PRO	2.8
1	C	101	LEU	2.8
1	B	62	GLY	2.7
1	B	74	ALA	2.7
1	B	73	VAL	2.6
1	C	75	ALA	2.6
1	B	169	LEU	2.6
1	B	96	LEU	2.5
1	B	65	SER	2.5
1	B	26	GLY	2.5
1	C	65	SER	2.5
1	B	64	LYS	2.5
1	B	78	LEU	2.5
1	C	57	PRO	2.4
1	C	27	LEU	2.4
1	B	101	LEU	2.4
1	B	25	ILE	2.4
1	C	48	TRP	2.4
1	C	41	ALA	2.4
1	A	60	ALA	2.3
1	B	103	GLY	2.3
1	C	25	ILE	2.3
1	C	78	LEU	2.3
1	C	24	VAL	2.3
1	B	61	ARG	2.3
1	C	172	GLY	2.2
1	A	53	ALA	2.2
1	B	37	ALA	2.2
1	B	41	ALA	2.2
1	B	43	HIS	2.2
1	C	47	VAL	2.2
1	C	63	ALA	2.1
1	C	58	LEU	2.1
1	C	39	LEU	2.1
1	B	35	ALA	2.0
1	C	61	ARG	2.0
1	B	23	THR	2.0

## 6.2 Non-standard residues in protein, DNA, RNA chains [i](#)

There are no non-standard protein/DNA/RNA residues in this entry.

## 6.3 Carbohydrates [i](#)

There are no monosaccharides in this entry.

## 6.4 Ligands [i](#)

In the following table, the Atoms column lists the number of modelled atoms in the group and the number defined in the chemical component dictionary. The B-factors column lists the minimum, median, 95<sup>th</sup> percentile and maximum values of B factors of atoms in the group. The column labelled 'Q< 0.9' lists the number of atoms with occupancy less than 0.9.

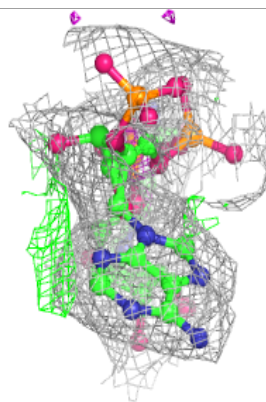
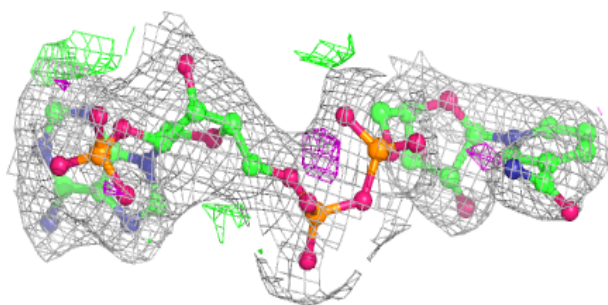
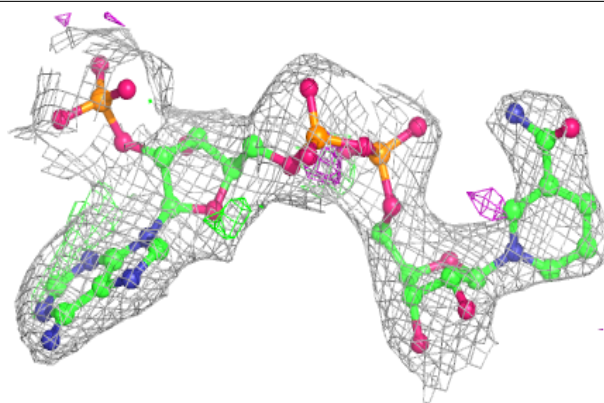
Mol	Type	Chain	Res	Atoms	RSCC	RSR	B-factors( $\text{\AA}^2$ )	Q<0.9
2	NAP	B	1307	48/48	0.92	0.19	65,84,102,108	0
2	NAP	A	1307	48/48	0.96	0.16	43,59,71,77	0
2	NAP	C	1307	48/48	0.96	0.17	52,71,86,91	0
2	NAP	D	1307	48/48	0.98	0.14	29,36,43,47	0

The following is a graphical depiction of the model fit to experimental electron density of all instances of the Ligand of Interest. In addition, ligands with molecular weight > 250 and outliers as shown on the geometry validation Tables will also be included. Each fit is shown from different orientation to approximate a three-dimensional view.

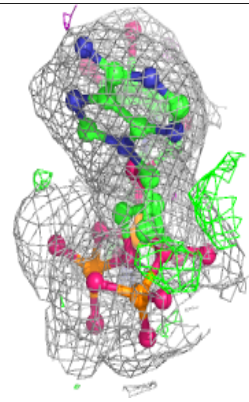
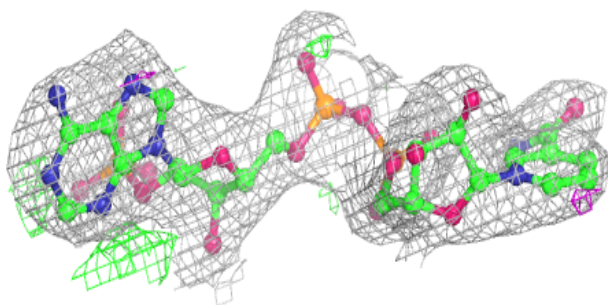
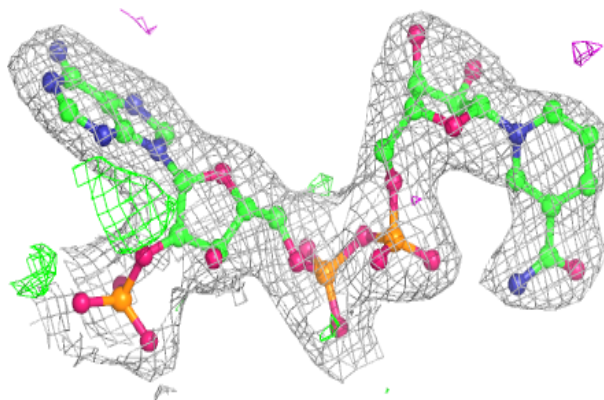


**Electron density around NAP B 1307:**

$2mF_o-DF_c$  (at 0.7 rmsd) in gray  
 $mF_o-DF_c$  (at 3 rmsd) in purple (negative)  
and green (positive)

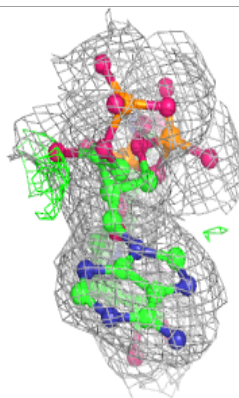
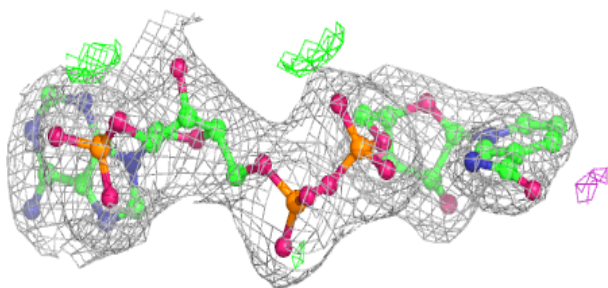
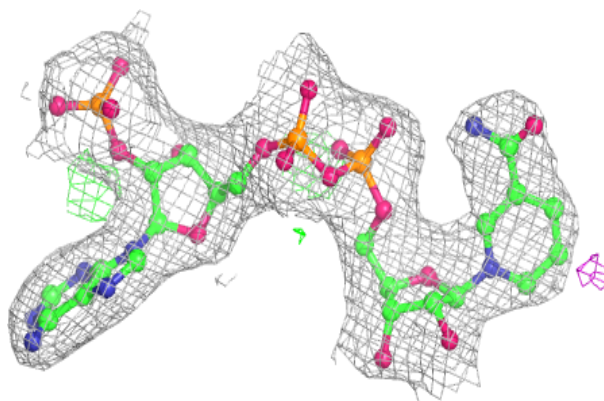
**Electron density around NAP A 1307:**

$2mF_o-DF_c$  (at 0.7 rmsd) in gray  
 $mF_o-DF_c$  (at 3 rmsd) in purple (negative)  
and green (positive)

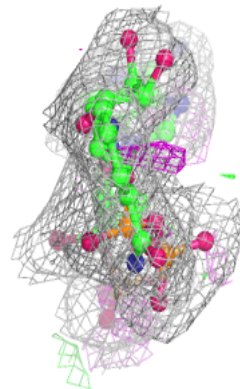
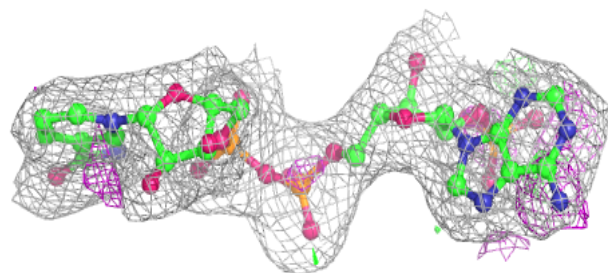
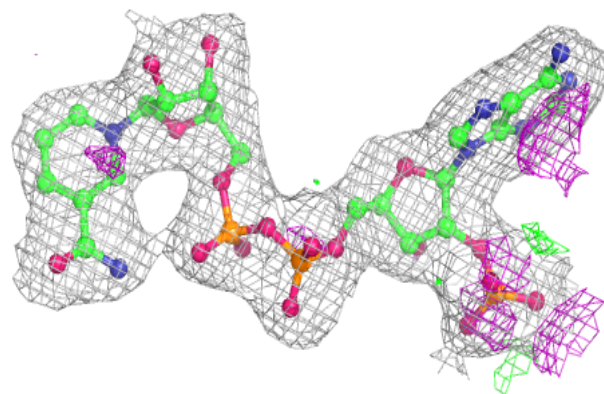


**Electron density around NAP C 1307:**

$2mF_o-DF_c$  (at 0.7 rmsd) in gray  
 $mF_o-DF_c$  (at 3 rmsd) in purple (negative)  
and green (positive)

**Electron density around NAP D 1307:**

$2mF_o-DF_c$  (at 0.7 rmsd) in gray  
 $mF_o-DF_c$  (at 3 rmsd) in purple (negative)  
and green (positive)



## 6.5 Other polymers [i](#)

There are no such residues in this entry.