



Full wwPDB X-ray Structure Validation Report ⓘ

Sep 17, 2023 – 03:28 PM EDT

PDB ID : 4ZDL
Title : The crystal structure of the T325S mutant of the human holo SepSecS
Authors : French, R.L.; Simonovic, M.
Deposited on : 2015-04-17
Resolution : 2.26 Å(reported)

This is a Full wwPDB X-ray Structure Validation Report for a publicly released PDB entry.

We welcome your comments at validation@mail.wwpdb.org

A user guide is available at

<https://www.wwpdb.org/validation/2017/XrayValidationReportHelp>

with specific help available everywhere you see the ⓘ symbol.

The types of validation reports are described at

<http://www.wwpdb.org/validation/2017/FAQs#types>.

The following versions of software and data (see [references ⓘ](#)) were used in the production of this report:

MolProbity : 4.02b-467
Mogul : 1.8.5 (274361), CSD as541be (2020)
Xtrriage (Phenix) : 1.13
EDS : 2.35.1
Percentile statistics : 20191225.v01 (using entries in the PDB archive December 25th 2019)
Refmac : 5.8.0158
CCP4 : 7.0.044 (Gargrove)
Ideal geometry (proteins) : Engh & Huber (2001)
Ideal geometry (DNA, RNA) : Parkinson et al. (1996)
Validation Pipeline (wwPDB-VP) : 2.35.1

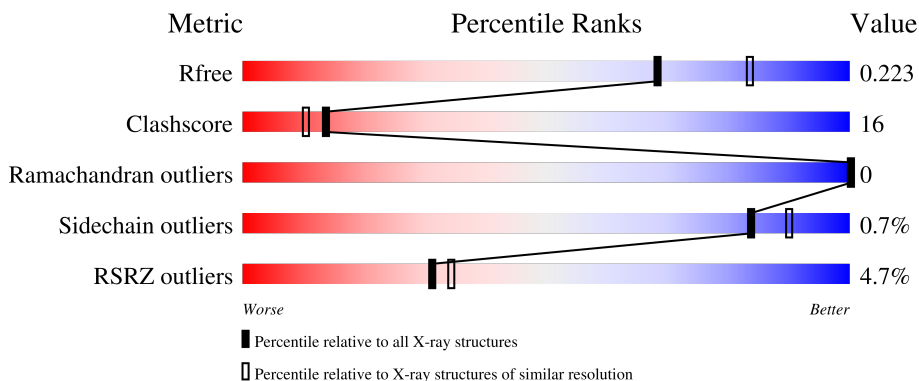
1 Overall quality at a glance

The following experimental techniques were used to determine the structure:

X-RAY DIFFRACTION

The reported resolution of this entry is 2.26 Å.

Percentile scores (ranging between 0-100) for global validation metrics of the entry are shown in the following graphic. The table shows the number of entries on which the scores are based.



Metric	Whole archive (#Entries)	Similar resolution (#Entries, resolution range(Å))
R_{free}	130704	1377 (2.26-2.26)
Clashscore	141614	1487 (2.26-2.26)
Ramachandran outliers	138981	1449 (2.26-2.26)
Sidechain outliers	138945	1450 (2.26-2.26)
RSRZ outliers	127900	1356 (2.26-2.26)

The table below summarises the geometric issues observed across the polymeric chains and their fit to the electron density. The red, orange, yellow and green segments of the lower bar indicate the fraction of residues that contain outliers for ≥ 3 , 2, 1 and 0 types of geometric quality criteria respectively. A grey segment represents the fraction of residues that are not modelled. The numeric value for each fraction is indicated below the corresponding segment, with a dot representing fractions $\leq 5\%$. The upper red bar (where present) indicates the fraction of residues that have poor fit to the electron density. The numeric value is given above the bar.

Mol	Chain	Length	Quality of chain
1	A	501	 5% (Poor fit), 67% (0 outliers), 21% (1 outlier), 11% (2+ outliers)
1	B	501	 3% (Poor fit), 63% (0 outliers), 26% (1 outlier), 11% (2+ outliers)

2 Entry composition [i](#)

There are 4 unique types of molecules in this entry. The entry contains 7465 atoms, of which 5 are hydrogens and 0 are deuteriums.

In the tables below, the ZeroOcc column contains the number of atoms modelled with zero occupancy, the AltConf column contains the number of residues with at least one atom in alternate conformation and the Trace column contains the number of residues modelled with at most 2 atoms.

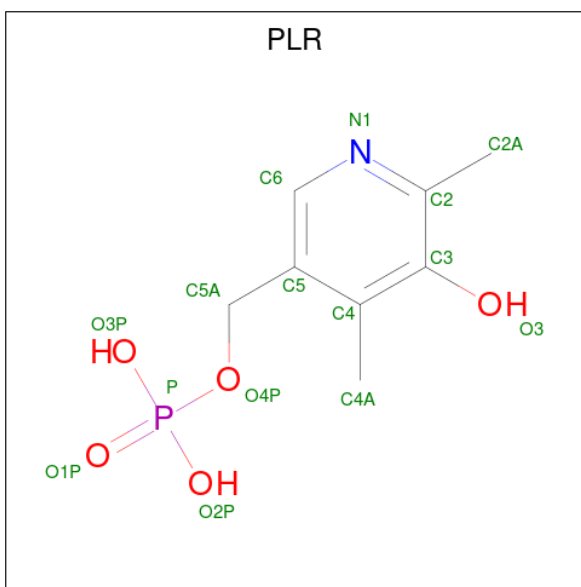
- Molecule 1 is a protein called O-phosphoseryl-tRNA(Sec) selenium transferase.

Mol	Chain	Residues	Atoms					ZeroOcc	AltConf	Trace
			Total	C	N	O	S			
1	A	444	Total 3470	C 2212	N 604	O 626	S 28	0	17	0
1	B	444	Total 3415	C 2174	N 595	O 619	S 27	0	11	0

There are 2 discrepancies between the modelled and reference sequences:

Chain	Residue	Modelled	Actual	Comment	Reference
A	325	SER	THR	engineered mutation	UNP Q9HD40
B	325	SER	THR	engineered mutation	UNP Q9HD40

- Molecule 2 is (5-HYDROXY-4,6-DIMETHYLPYRIDIN-3-YL)METHYL DIHYDROGEN PHOSPHATE (three-letter code: PLR) (formula: C₈H₁₂NO₅P).



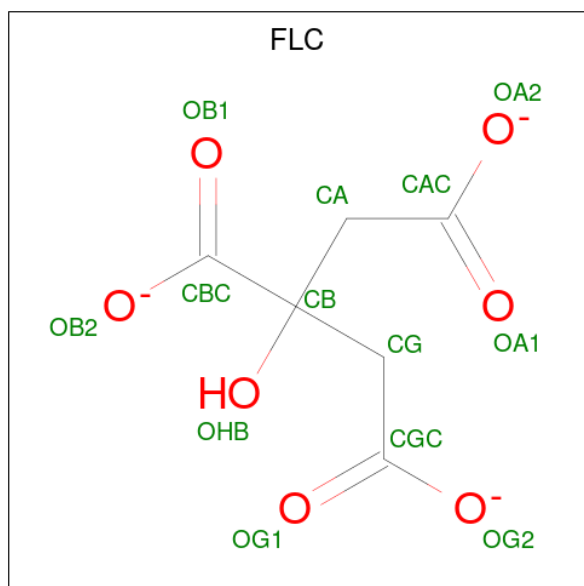
Mol	Chain	Residues	Atoms					ZeroOcc	AltConf
			Total	C	N	O	P		
2	A	1	Total 15	C 8	N 1	O 5	P 1	0	0

Continued on next page...

Continued from previous page...

Mol	Chain	Residues	Atoms					ZeroOcc	AltConf
2	B	1	Total	C	N	O	P	0	0
			15	8	1	5	1		

- Molecule 3 is CITRATE ANION (three-letter code: FLC) (formula: $C_6H_5O_7^-$).



Mol	Chain	Residues	Atoms				ZeroOcc	AltConf
3	A	1	Total	C	H	O	0	0
			18	6	5	7		

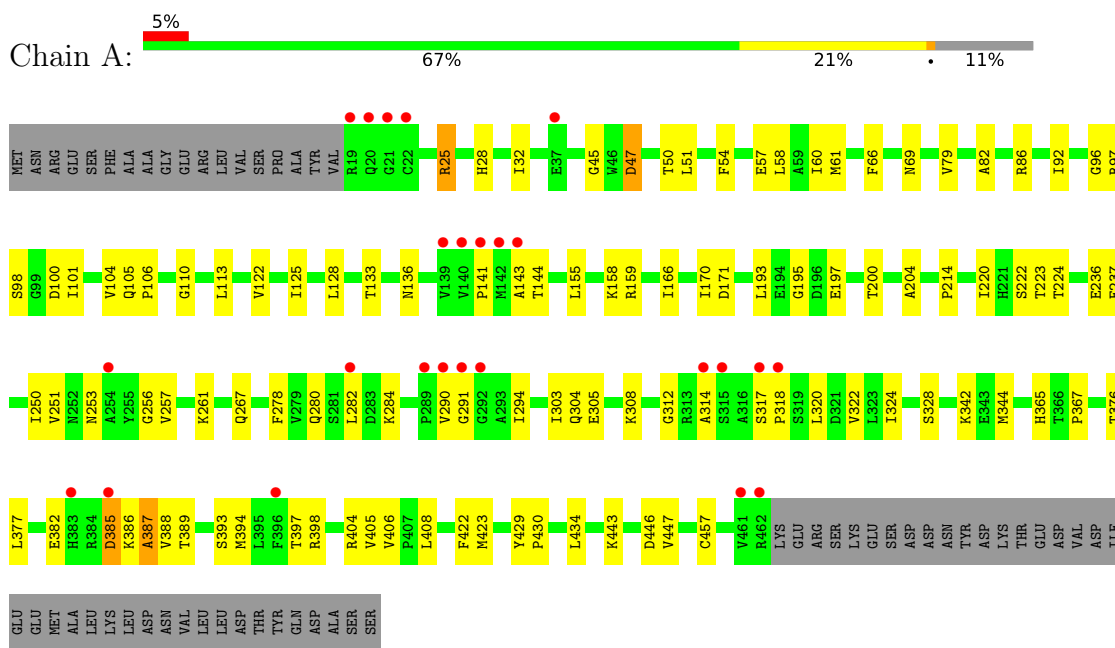
- Molecule 4 is water.

Mol	Chain	Residues	Atoms		ZeroOcc	AltConf
4	A	291	Total	O	0	0
			291	291		
4	B	239	Total	O	0	5
			241	241		

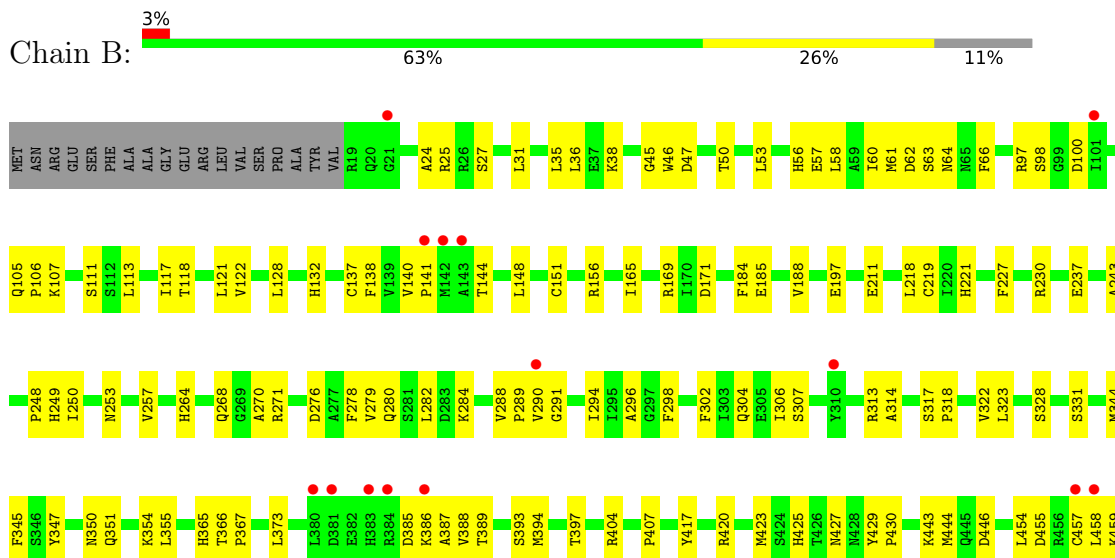
3 Residue-property plots [i](#)

These plots are drawn for all protein, RNA, DNA and oligosaccharide chains in the entry. The first graphic for a chain summarises the proportions of the various outlier classes displayed in the second graphic. The second graphic shows the sequence view annotated by issues in geometry and electron density. Residues are color-coded according to the number of geometric quality criteria for which they contain at least one outlier: green = 0, yellow = 1, orange = 2 and red = 3 or more. A red dot above a residue indicates a poor fit to the electron density ($RSRZ > 2$). Stretches of 2 or more consecutive residues without any outlier are shown as a green connector. Residues present in the sample, but not in the model, are shown in grey.

- Molecule 1: O-phosphoseryl-tRNA(Sec) selenium transferase



- Molecule 1: O-phosphoseryl-tRNA(Sec) selenium transferase



3450
V461
R462
LYS
GLU
ARG
SER
LYS
GLU
SER
SER
ASP
ASP
ASN
TYR
ASP
LYS
THR
GLU
ASP
VAL
ASP
ILE
GLU
GLU
MET
ALA
LEU
LYS
LEU
LEU
ASP
THR
TYR
GLN
ASP
ALA
SER
SER

4 Data and refinement statistics

Property	Value	Source
Space group	P 21 21 2	Depositor
Cell constants a, b, c, α , β , γ	68.02Å 83.15Å 193.14Å 90.00° 90.00° 90.00°	Depositor
Resolution (Å)	46.22 – 2.26 46.22 – 2.26	Depositor EDS
% Data completeness (in resolution range)	84.5 (46.22-2.26) 79.2 (46.22-2.26)	Depositor EDS
R_{merge}	0.18	Depositor
R_{sym}	(Not available)	Depositor
$\langle I/\sigma(I) \rangle$ ¹	0.92 (at 2.27Å)	Xtrriage
Refinement program	PHENIX 1.9_1692	Depositor
R, R_{free}	0.163 , 0.221 0.167 , 0.223	Depositor DCC
R_{free} test set	2200 reflections (4.97%)	wwPDB-VP
Wilson B-factor (Å ²)	34.4	Xtrriage
Anisotropy	0.897	Xtrriage
Bulk solvent k_{sol} (e/Å ³), B_{sol} (Å ²)	0.34 , 61.1	EDS
L-test for twinning ²	$\langle L \rangle = 0.48$, $\langle L^2 \rangle = 0.31$	Xtrriage
Estimated twinning fraction	No twinning to report.	Xtrriage
F_o, F_c correlation	0.96	EDS
Total number of atoms	7465	wwPDB-VP
Average B, all atoms (Å ²)	43.0	wwPDB-VP

Xtrriage's analysis on translational NCS is as follows: *The largest off-origin peak in the Patterson function is 4.14% of the height of the origin peak. No significant pseudotranslation is detected.*

¹Intensities estimated from amplitudes.

²Theoretical values of $\langle |L| \rangle$, $\langle L^2 \rangle$ for acentric reflections are 0.5, 0.333 respectively for untwinned datasets, and 0.375, 0.2 for perfectly twinned datasets.

5 Model quality i

5.1 Standard geometry i

Bond lengths and bond angles in the following residue types are not validated in this section: FLC, PLR

The Z score for a bond length (or angle) is the number of standard deviations the observed value is removed from the expected value. A bond length (or angle) with $|Z| > 5$ is considered an outlier worth inspection. RMSZ is the root-mean-square of all Z scores of the bond lengths (or angles).

Mol	Chain	Bond lengths		Bond angles	
		RMSZ	# Z >5	RMSZ	# Z >5
1	A	0.38	0/3586	0.56	1/4854 (0.0%)
1	B	0.42	0/3513	0.58	1/4758 (0.0%)
All	All	0.40	0/7099	0.57	2/9612 (0.0%)

There are no bond length outliers.

All (2) bond angle outliers are listed below:

Mol	Chain	Res	Type	Atoms	Z	Observed(°)	Ideal(°)
1	B	100	ASP	CB-CG-OD1	6.78	124.40	118.30
1	A	387	ALA	N-CA-CB	6.17	118.74	110.10

There are no chirality outliers.

There are no planarity outliers.

5.2 Too-close contacts i

In the following table, the Non-H and H(model) columns list the number of non-hydrogen atoms and hydrogen atoms in the chain respectively. The H(added) column lists the number of hydrogen atoms added and optimized by MolProbity. The Clashes column lists the number of clashes within the asymmetric unit, whereas Symm-Clashes lists symmetry-related clashes.

Mol	Chain	Non-H	H(model)	H(added)	Clashes	Symm-Clashes
1	A	3470	0	3500	99	1
1	B	3415	0	3409	121	0
2	A	15	0	8	4	0
2	B	15	0	8	3	0
3	A	13	5	5	0	1
4	A	291	0	0	12	1
4	B	241	0	0	16	0

Continued on next page...

Continued from previous page...

Mol	Chain	Non-H	H(model)	H(added)	Clashes	Symm-Clashes
All	All	7460	5	6930	220	2

The all-atom clashscore is defined as the number of clashes found per 1000 atoms (including hydrogen atoms). The all-atom clashscore for this structure is 16.

All (220) close contacts within the same asymmetric unit are listed below, sorted by their clash magnitude.

Atom-1	Atom-2	Interatomic distance (Å)	Clash overlap (Å)
1:B:386:LYS:HB3	1:B:389:THR:CG2	2.01	0.90
1:B:219:CYS:SG	4:B:1288:HOH:O	2.31	0.86
1:B:31:LEU:HD22	1:B:50[A]:THR:HG21	1.56	0.84
1:B:97[B]:ARG:HD2	1:B:98:SER:H	1.45	0.82
1:B:345:PHE:CZ	1:B:373:LEU:HD21	2.16	0.81
1:B:141:PRO:HG2	1:B:314:ALA:HB1	1.64	0.80
1:A:282:LEU:HD22	1:A:322[B]:VAL:HG11	1.64	0.78
1:A:100[B]:ASP:HB3	1:A:308:LYS:CD	2.19	0.72
1:A:144:THR:HB	2:A:1001:PLR:H5A2	1.71	0.72
1:A:51:LEU:HD21	1:A:324:ILE:HG23	1.71	0.71
1:A:100[B]:ASP:HA	4:A:1108:HOH:O	1.89	0.70
1:A:423:MET:HG2	4:A:1111:HOH:O	1.90	0.70
1:B:46:TRP:HB3	1:B:50[B]:THR:CG2	2.22	0.70
1:A:170:ILE:HD13	1:A:223:THR:HG21	1.74	0.70
1:A:257:VAL:HG23	1:A:280:GLN:HG2	1.74	0.68
1:B:386:LYS:HB3	1:B:389:THR:HG21	1.74	0.68
1:B:350:ASN:HB3	4:B:1301:HOH:O	1.94	0.68
1:B:393:SER:O	1:B:397:THR:HG23	1.95	0.67
1:B:257:VAL:HG23	1:B:280:GLN:HG2	1.78	0.66
1:A:100[A]:ASP:HA	4:A:1108:HOH:O	1.95	0.66
1:B:97[B]:ARG:HD3	1:B:105:GLN:OE1	1.95	0.66
1:A:122:VAL:CG1	1:A:294:ILE:HD13	2.26	0.65
1:B:122:VAL:HG11	1:B:294:ILE:HD13	1.77	0.65
1:A:47:ASP:O	1:A:50[B]:THR:HG22	1.97	0.64
1:B:31:LEU:HD21	1:B:46:TRP:CD1	2.32	0.64
1:A:100[B]:ASP:HB3	1:A:308:LYS:HD2	1.79	0.64
1:B:122:VAL:CG1	1:B:294:ILE:HD13	2.28	0.64
1:A:98[A]:SER:HA	1:A:312:GLY:HA2	1.79	0.63
1:B:128:LEU:HD11	1:B:331:SER:HB2	1.81	0.62
1:A:394:MET:HE1	1:A:457:CYS:HA	1.80	0.62
1:A:344:MET:CE	1:A:447:VAL:HG21	2.30	0.62
1:B:165:ILE:HG23	4:B:1288:HOH:O	1.98	0.62
1:A:79:VAL:HG21	1:A:92:ILE:HD12	1.82	0.61

Continued on next page...

Continued from previous page...

Atom-1	Atom-2	Interatomic distance (Å)	Clash overlap (Å)
1:A:144:THR:HB	2:A:1001:PLR:C5A	2.30	0.61
1:A:96:GLY:HA3	1:A:101:ILE:HA	1.82	0.61
1:B:97[B]:ARG:HD2	1:B:98:SER:N	2.15	0.61
1:B:373:LEU:HD22	4:B:1312:HOH:O	1.99	0.61
1:B:31:LEU:CD2	1:B:50[A]:THR:HG21	2.28	0.61
1:B:219:CYS:HB3	1:B:248:PRO:HB2	1.83	0.61
1:A:304:GLN:HG2	4:A:1342:HOH:O	1.99	0.61
1:B:56:HIS:O	1:B:60:ILE:HG23	2.01	0.60
1:A:422:PHE:O	1:A:423:MET:HB2	2.01	0.60
1:B:317:SER:HB3	1:B:318:PRO:HD3	1.84	0.60
1:B:144:THR:HG23	1:B:279:VAL:HG12	1.82	0.60
1:A:61:MET:HE2	1:A:110:GLY:HA2	1.84	0.59
1:B:388:VAL:HG11	1:B:407:PRO:HB3	1.84	0.59
1:A:365:HIS:CE1	1:A:367:PRO:HG3	2.38	0.59
1:A:122:VAL:HG13	1:A:294:ILE:HD13	1.84	0.59
1:A:317:SER:HB3	1:A:318:PRO:HD3	1.85	0.59
1:B:128:LEU:CD1	1:B:331:SER:HB2	2.33	0.59
1:B:47:ASP:O	1:B:50[B]:THR:HG22	2.03	0.59
1:B:248:PRO:HA	1:B:276:ASP:OD2	2.03	0.58
1:B:386:LYS:HB3	1:B:389:THR:HG22	1.82	0.58
1:A:385:ASP:O	1:A:386:LYS:C	2.41	0.58
1:B:169:ARG:HH12	1:B:427:ASN:HD22	1.52	0.58
1:B:354:LYS:HE3	4:B:1301:HOH:O	2.02	0.58
1:A:429:TYR:CG	1:A:430:PRO:HD2	2.39	0.57
1:A:98[B]:SER:HA	1:A:312:GLY:HA2	1.85	0.57
1:B:122:VAL:HG11	1:B:294:ILE:CD1	2.33	0.57
1:A:141:PRO:HG3	1:A:314:ALA:HB1	1.85	0.56
1:B:221:HIS:HB2	4:B:1288:HOH:O	2.05	0.56
1:B:169:ARG:HH12	1:B:427:ASN:ND2	2.02	0.56
1:A:429:TYR:CD1	1:A:430:PRO:HD2	2.41	0.56
1:A:342:LYS:NZ	4:A:1109:HOH:O	2.38	0.56
1:A:197:GLU:OE2	1:A:367:PRO:HD2	2.06	0.55
1:B:404:ARG:NH1	4:B:1108:HOH:O	2.38	0.55
1:B:35:LEU:HD11	1:B:121:LEU:HD21	1.87	0.55
1:A:158:LYS:HE3	1:A:305:GLU:OE1	2.07	0.55
1:B:288:VAL:HB	1:B:289:PRO:CD	2.37	0.54
1:A:224:THR:HG1	1:A:253:ASN:HD22	1.54	0.54
1:B:219:CYS:HB2	1:B:248:PRO:O	2.08	0.54
1:A:141:PRO:CG	1:A:314:ALA:HB1	2.38	0.54
1:B:105:GLN:HE21	1:B:107:LYS:H	1.55	0.54
1:B:355:LEU:HD23	1:B:454:LEU:HD23	1.90	0.54

Continued on next page...

Continued from previous page...

Atom-1	Atom-2	Interatomic distance (Å)	Clash overlap (Å)
1:B:121:LEU:HD12	1:B:323:LEU:HD12	1.90	0.54
1:A:100[A]:ASP:HB2	1:A:308:LYS:CD	2.38	0.54
1:B:97[B]:ARG:NH1	1:B:313:ARG:HH21	2.06	0.54
1:B:365:HIS:CE1	1:B:367:PRO:HG3	2.43	0.54
1:A:404[B]:ARG:NH1	4:A:1111:HOH:O	2.40	0.54
1:B:237:GLU:OE1	1:B:237:GLU:N	2.35	0.54
1:B:366:THR:N	1:B:367:PRO:HD3	2.23	0.53
1:A:365:HIS:NE2	1:A:367:PRO:HG3	2.23	0.53
1:A:61:MET:HE2	1:A:110:GLY:CA	2.38	0.53
1:A:66:PHE:HB2	1:A:69:ASN:HB2	1.89	0.53
1:A:394:MET:O	1:A:398:ARG:HG2	2.08	0.53
1:A:382:GLU:OE2	1:A:389:THR:OG1	2.21	0.53
1:B:97[B]:ARG:NE	4:B:1331[B]:HOH:O	2.42	0.53
1:A:155:LEU:CD1	1:A:250[B]:ILE:HD11	2.38	0.53
1:B:144:THR:HB	2:B:1001:PLR:H5A2	1.91	0.53
1:A:282:LEU:HD13	1:A:322[A]:VAL:CG2	2.39	0.52
1:A:318:PRO:O	1:A:322[A]:VAL:HG23	2.09	0.52
1:B:304:GLN:O	1:B:307:SER:HB3	2.08	0.52
1:B:420:ARG:NH2	4:B:1114:HOH:O	2.42	0.52
1:B:144:THR:HB	2:B:1001:PLR:C5A	2.39	0.52
1:A:171:ASP:OD2	1:A:423:MET:N	2.40	0.52
1:B:63:SER:HA	1:B:66:PHE:CE2	2.46	0.51
1:A:28:HIS:O	1:A:32:ILE:HG13	2.09	0.51
1:A:136:ASN:HD22	1:A:303:ILE:HB	1.75	0.51
1:A:253:ASN:HD21	1:A:256:GLY:HA3	1.73	0.51
1:B:344:MET:CE	1:B:444:MET:HA	2.40	0.51
1:A:278:PHE:CD2	1:A:280:GLN:NE2	2.79	0.51
1:B:394:MET:HE1	1:B:457:CYS:HA	1.91	0.51
1:B:58:LEU:HD21	1:B:113:LEU:HD23	1.92	0.51
1:B:188:VAL:HG21	4:B:1336[A]:HOH:O	2.10	0.51
1:A:79:VAL:HG21	1:A:92:ILE:CD1	2.41	0.51
1:A:82:ALA:O	1:A:86[B]:ARG:HG3	2.11	0.51
1:B:63:SER:HA	1:B:66:PHE:CD2	2.46	0.50
1:B:278:PHE:CD2	1:B:280:GLN:NE2	2.80	0.50
1:B:25:ARG:NH2	1:B:57:GLU:OE2	2.35	0.50
1:A:257:VAL:CG2	1:A:280:GLN:HG2	2.40	0.50
1:B:429:TYR:CD2	1:B:430:PRO:HD2	2.47	0.50
1:B:31:LEU:HD21	1:B:46:TRP:NE1	2.27	0.50
1:B:148:LEU:O	1:B:151:CYS:HB2	2.11	0.50
1:B:118:THR:HG23	1:B:322[B]:VAL:HG13	1.92	0.50
1:A:261:LYS:HG2	4:A:1166:HOH:O	2.12	0.50

Continued on next page...

Continued from previous page...

Atom-1	Atom-2	Interatomic distance (Å)	Clash overlap (Å)
1:B:36:LEU:CD2	1:B:117:ILE:HD11	2.42	0.50
1:B:365:HIS:C	1:B:367:PRO:HD3	2.32	0.49
1:A:408:LEU:HA	4:A:1277:HOH:O	2.12	0.49
1:B:282:LEU:HD22	1:B:322[A]:VAL:HG21	1.93	0.49
1:A:125:ILE:HD13	1:A:128:LEU:HD13	1.94	0.49
1:A:394:MET:HE1	1:A:457:CYS:CA	2.43	0.49
1:B:243:ALA:HA	4:B:1133:HOH:O	2.11	0.49
1:A:253:ASN:ND2	1:A:256:GLY:HA3	2.27	0.49
1:B:156:ARG:HB2	1:B:184:PHE:HZ	1.78	0.49
1:B:385:ASP:O	1:B:386:LYS:C	2.51	0.49
1:B:38:LYS:HB2	4:B:1120:HOH:O	2.13	0.48
1:A:97:ARG:HG2	1:A:105:GLN:NE2	2.28	0.48
1:B:171:ASP:OD2	1:B:423:MET:N	2.47	0.48
1:B:230:ARG:HB2	1:B:425:HIS:CD2	2.48	0.48
1:A:155:LEU:HD11	1:A:250[B]:ILE:HD11	1.95	0.47
1:B:282:LEU:HD13	1:B:322[A]:VAL:CG2	2.45	0.47
1:B:253:ASN:HD22	1:B:280:GLN:HE21	1.61	0.47
1:B:288:VAL:HB	1:B:289:PRO:HD2	1.95	0.47
1:B:429:TYR:CG	1:B:430:PRO:HD2	2.49	0.47
1:A:122:VAL:HG11	1:A:294:ILE:HD13	1.95	0.47
1:B:264[A]:HIS:ND1	4:B:1103:HOH:O	2.34	0.47
1:A:404[B]:ARG:HD3	1:A:423:MET:HE2	1.96	0.47
1:B:62:ASP:HB3	1:B:64:ASN:OD1	2.15	0.47
1:B:455:ASP:OD1	1:B:459:LYS:HE3	2.15	0.47
1:A:25:ARG:NH2	1:A:57:GLU:OE2	2.48	0.47
1:A:224:THR:OG1	1:A:253:ASN:ND2	2.35	0.46
1:A:159:ARG:NH2	1:A:214:PRO:O	2.49	0.46
1:B:58:LEU:CD2	1:B:113:LEU:HD23	2.44	0.46
1:A:204:ALA:HA	4:A:1322:HOH:O	2.15	0.46
1:A:54:PHE:O	1:A:58[B]:LEU:HD13	2.16	0.46
1:B:137[B]:CYS:HB2	1:B:296:ALA:HB2	1.96	0.46
4:A:1276:HOH:O	1:B:24:ALA:HA	2.16	0.46
1:A:237:GLU:N	1:A:237:GLU:OE1	2.48	0.46
1:B:227:PHE:HD2	1:B:404:ARG:NH2	2.14	0.46
1:B:344:MET:HE1	1:B:444:MET:HA	1.98	0.45
1:A:105:GLN:OE1	1:A:106:PRO:HD2	2.17	0.45
1:B:45:GLY:HA3	1:B:328:SER:O	2.16	0.45
1:B:141:PRO:HG2	1:B:314:ALA:CB	2.39	0.45
1:B:111:SER:HB3	4:B:1102:HOH:O	2.17	0.45
1:B:184:PHE:CZ	1:B:218:LEU:HD22	2.50	0.45
1:B:270:ALA:HB2	1:B:298:PHE:CZ	2.51	0.45

Continued on next page...

Continued from previous page...

Atom-1	Atom-2	Interatomic distance (Å)	Clash overlap (Å)
1:A:96:GLY:O	1:A:105:GLN:NE2	2.47	0.45
1:B:290:VAL:CG1	1:B:291:GLY:N	2.79	0.45
1:B:58:LEU:HD23	1:B:58:LEU:HA	1.78	0.45
1:A:133:THR:HG23	1:A:267:GLN:OE1	2.17	0.44
1:A:166:ILE:HB	1:A:220:ILE:HG12	1.99	0.44
1:A:236:GLU:HG3	4:A:1305:HOH:O	2.16	0.44
1:B:197:GLU:OE2	1:B:367:PRO:HD2	2.18	0.44
1:A:365:HIS:C	1:A:367:PRO:HD3	2.37	0.44
1:B:211:GLU:O	1:B:211:GLU:HG2	2.17	0.44
1:B:388:VAL:CG1	1:B:407:PRO:HB3	2.47	0.44
1:A:320:LEU:O	1:A:324:ILE:HG13	2.17	0.44
1:A:344:MET:CE	1:A:447:VAL:CG2	2.94	0.44
1:B:62:ASP:OD2	1:B:111:SER:OG	2.33	0.44
1:A:58[A]:LEU:CD2	1:A:113:LEU:HD23	2.48	0.44
1:B:347:TYR:O	1:B:351:GLN:HG2	2.18	0.44
1:A:100[B]:ASP:HB3	1:A:308:LYS:HD3	1.99	0.43
1:A:385:ASP:O	1:A:387:ALA:N	2.51	0.43
1:B:35:LEU:CD1	1:B:121:LEU:HD21	2.49	0.43
1:B:111:SER:CB	4:B:1102:HOH:O	2.66	0.43
1:B:387:ALA:HB1	1:B:461:VAL:CG1	2.49	0.43
1:A:388:VAL:HG12	1:A:405:VAL:CG1	2.49	0.43
1:A:405:VAL:HG23	1:A:434:LEU:HD13	2.00	0.43
1:B:268:GLN:HB3	4:B:1104:HOH:O	2.18	0.43
1:B:284:LYS:NZ	2:B:1001:PLR:O3	2.52	0.43
1:A:79:VAL:CG2	1:A:92:ILE:HD12	2.46	0.42
1:A:222:SER:OG	1:A:251:VAL:HG22	2.19	0.42
1:A:376:THR:O	1:A:377:LEU:HD23	2.19	0.42
1:B:31:LEU:HD23	1:B:46:TRP:CE2	2.54	0.42
1:B:137[B]:CYS:SG	1:B:294:ILE:HG23	2.59	0.42
1:B:184:PHE:CE1	1:B:218:LEU:HD22	2.54	0.42
1:B:443:LYS:O	1:B:446:ASP:HB2	2.18	0.42
1:B:185:GLU:HG3	1:B:417[A]:TYR:OH	2.19	0.42
1:A:45:GLY:HA3	1:A:328:SER:O	2.20	0.42
1:A:393:SER:O	1:A:397:THR:HG23	2.19	0.42
1:B:132[B]:HIS:CE1	1:B:271:ARG:HH22	2.37	0.42
1:A:57:GLU:O	1:A:60:ILE:HG12	2.19	0.42
1:B:140:VAL:HA	1:B:141:PRO:HD3	1.76	0.42
1:B:121:LEU:CD1	1:B:323:LEU:HD12	2.50	0.42
1:B:264[A]:HIS:CE1	1:B:268:GLN:HG2	2.55	0.42
1:A:143:ALA:HB1	2:A:1001:PLR:O2P	2.19	0.42
1:B:249:HIS:N	1:B:276:ASP:OD2	2.40	0.42

Continued on next page...

Continued from previous page...

Atom-1	Atom-2	Interatomic distance (Å)	Clash overlap (Å)
1:B:355:LEU:CD2	1:B:454:LEU:HD23	2.49	0.42
1:A:105:GLN:HA	1:A:106:PRO:HD3	1.87	0.41
1:B:249:HIS:O	1:B:250:ILE:HD12	2.20	0.41
1:B:458:LEU:HD23	1:B:458:LEU:HA	1.80	0.41
1:A:284:LYS:NZ	2:A:1001:PLR:O3	2.54	0.41
1:A:406:VAL:HG22	1:A:423:MET:HE1	2.02	0.41
1:B:282:LEU:HD22	1:B:322[A]:VAL:CG2	2.51	0.41
1:B:302:PHE:CE2	1:B:306:ILE:HD11	2.56	0.41
1:A:382:GLU:OE1	1:A:386:LYS:HA	2.20	0.41
1:B:105:GLN:HA	1:B:106:PRO:HD2	1.94	0.41
1:A:136:ASN:ND2	1:A:303:ILE:HB	2.34	0.41
1:A:404[A]:ARG:HG3	4:A:1168:HOH:O	2.20	0.41
1:A:443:LYS:O	1:A:446:ASP:HB2	2.20	0.41
1:B:31:LEU:CD2	1:B:46:TRP:CE2	3.04	0.41
1:A:193[A]:LEU:HD11	1:A:195:GLY:O	2.20	0.40
1:B:53:LEU:O	1:B:57:GLU:HG2	2.21	0.40
1:B:137[B]:CYS:SG	1:B:138:PHE:N	2.93	0.40
1:A:290:VAL:CG1	1:A:291:GLY:N	2.84	0.40
1:B:58:LEU:O	1:B:61:MET:HB2	2.21	0.40
1:B:105:GLN:NE2	1:B:106:PRO:HD2	2.37	0.40
1:A:97:ARG:HD2	1:A:104:VAL:O	2.21	0.40

All (2) symmetry-related close contacts are listed below. The label for Atom-2 includes the symmetry operator and encoded unit-cell translations to be applied.

Atom-1	Atom-2	Interatomic distance (Å)	Clash overlap (Å)
1:A:98[A]:SER:OG	3:A:1002:FLC:OG1[2_565]	2.10	0.10
4:A:1210:HOH:O	4:A:1289:HOH:O[2_565]	2.17	0.03

5.3 Torsion angles [i](#)

5.3.1 Protein backbone [i](#)

In the following table, the Percentiles column shows the percent Ramachandran outliers of the chain as a percentile score with respect to all X-ray entries followed by that with respect to entries of similar resolution.

The Analysed column shows the number of residues for which the backbone conformation was analysed, and the total number of residues.

Mol	Chain	Analysed	Favoured	Allowed	Outliers	Percentiles	
1	A	459/501 (92%)	444 (97%)	15 (3%)	0	100	100
1	B	453/501 (90%)	426 (94%)	27 (6%)	0	100	100
All	All	912/1002 (91%)	870 (95%)	42 (5%)	0	100	100

There are no Ramachandran outliers to report.

5.3.2 Protein sidechains [i](#)

In the following table, the Percentiles column shows the percent sidechain outliers of the chain as a percentile score with respect to all X-ray entries followed by that with respect to entries of similar resolution.

The Analysed column shows the number of residues for which the sidechain conformation was analysed, and the total number of residues.

Mol	Chain	Analysed	Rotameric	Outliers	Percentiles	
1	A	374/430 (87%)	370 (99%)	4 (1%)	73	82
1	B	363/430 (84%)	362 (100%)	1 (0%)	92	95
All	All	737/860 (86%)	732 (99%)	5 (1%)	84	90

All (5) residues with a non-rotameric sidechain are listed below:

Mol	Chain	Res	Type
1	A	25	ARG
1	A	47	ASP
1	A	200	THR
1	A	385	ASP
1	B	27	SER

Sometimes sidechains can be flipped to improve hydrogen bonding and reduce clashes. All (4) such sidechains are listed below:

Mol	Chain	Res	Type
1	A	253	ASN
1	B	280	GLN
1	B	412	GLN
1	B	427	ASN

5.3.3 RNA [i](#)

There are no RNA molecules in this entry.

5.4 Non-standard residues in protein, DNA, RNA chains [i](#)

There are no non-standard protein/DNA/RNA residues in this entry.

5.5 Carbohydrates [i](#)

There are no monosaccharides in this entry.

5.6 Ligand geometry [i](#)

3 ligands are modelled in this entry.

In the following table, the Counts columns list the number of bonds (or angles) for which Mogul statistics could be retrieved, the number of bonds (or angles) that are observed in the model and the number of bonds (or angles) that are defined in the Chemical Component Dictionary. The Link column lists molecule types, if any, to which the group is linked. The Z score for a bond length (or angle) is the number of standard deviations the observed value is removed from the expected value. A bond length (or angle) with $|Z| > 2$ is considered an outlier worth inspection. RMSZ is the root-mean-square of all Z scores of the bond lengths (or angles).

Mol	Type	Chain	Res	Link	Bond lengths			Bond angles		
					Counts	RMSZ	# Z > 2	Counts	RMSZ	# Z > 2
2	PLR	B	1001	1	15,15,15	1.08	1 (6%)	20,22,22	1.17	2 (10%)
3	FLC	A	1002	-	12,12,12	1.35	1 (8%)	17,17,17	1.77	2 (11%)
2	PLR	A	1001	1	15,15,15	0.96	1 (6%)	20,22,22	1.15	3 (15%)

In the following table, the Chirals column lists the number of chiral outliers, the number of chiral centers analysed, the number of these observed in the model and the number defined in the Chemical Component Dictionary. Similar counts are reported in the Torsion and Rings columns. '-' means no outliers of that kind were identified.

Mol	Type	Chain	Res	Link	Chirals	Torsions	Rings
2	PLR	B	1001	1	-	0/6/6/6	0/1/1/1
3	FLC	A	1002	-	-	7/16/16/16	-
2	PLR	A	1001	1	-	0/6/6/6	0/1/1/1

All (3) bond length outliers are listed below:

Mol	Chain	Res	Type	Atoms	Z	Observed(Å)	Ideal(Å)
2	B	1001	PLR	C2-N1	2.67	1.38	1.33
3	A	1002	FLC	CA-CB	-2.42	1.50	1.53
2	A	1001	PLR	C2-N1	2.24	1.38	1.33

All (7) bond angle outliers are listed below:

Mol	Chain	Res	Type	Atoms	Z	Observed(°)	Ideal(°)
3	A	1002	FLC	OB2-CBC-CB	4.92	121.59	113.05
2	B	1001	PLR	C6-C5-C4	3.26	120.72	118.16
3	A	1002	FLC	OG2-CGC-CG	2.28	121.67	114.35
2	B	1001	PLR	C5-C6-N1	-2.24	120.08	123.82
2	A	1001	PLR	C6-C5-C4	2.13	119.83	118.16
2	A	1001	PLR	C5-C6-N1	-2.09	120.34	123.82
2	A	1001	PLR	O2P-P-O4P	2.03	112.14	106.73

There are no chirality outliers.

All (7) torsion outliers are listed below:

Mol	Chain	Res	Type	Atoms
3	A	1002	FLC	CA-CB-CBC-OB1
3	A	1002	FLC	CA-CB-CBC-OB2
3	A	1002	FLC	OHB-CB-CBC-OB1
3	A	1002	FLC	OHB-CB-CBC-OB2
3	A	1002	FLC	OHB-CB-CG-CGC
3	A	1002	FLC	CB-CA-CAC-OA2
3	A	1002	FLC	CB-CA-CAC-OA1

There are no ring outliers.

3 monomers are involved in 8 short contacts:

Mol	Chain	Res	Type	Clashes	Symm-Clashes
2	B	1001	PLR	3	0
3	A	1002	FLC	0	1
2	A	1001	PLR	4	0

5.7 Other polymers [i](#)

There are no such residues in this entry.

5.8 Polymer linkage issues

There are no chain breaks in this entry.

6 Fit of model and data

6.1 Protein, DNA and RNA chains

In the following table, the column labelled ‘#RSRZ > 2’ contains the number (and percentage) of RSRZ outliers, followed by percent RSRZ outliers for the chain as percentile scores relative to all X-ray entries and entries of similar resolution. The OWAB column contains the minimum, median, 95th percentile and maximum values of the occupancy-weighted average B-factor per residue. The column labelled ‘Q < 0.9’ lists the number of (and percentage) of residues with an average occupancy less than 0.9.

Mol	Chain	Analysed	<RSRZ>	#RSRZ>2	OWAB(Å ²)	Q<0.9
1	A	444/501 (88%)	0.13	25 (5%) 24 26	26, 39, 65, 104	0
1	B	444/501 (88%)	0.12	17 (3%) 40 43	26, 42, 72, 114	0
All	All	888/1002 (88%)	0.12	42 (4%) 31 34	26, 41, 69, 114	0

All (42) RSRZ outliers are listed below:

Mol	Chain	Res	Type	RSRZ
1	B	383	HIS	5.9
1	A	383	HIS	5.7
1	B	380	LEU	4.9
1	A	21	GLY	4.0
1	A	461	VAL	4.0
1	B	461	VAL	3.9
1	B	384	ARG	3.8
1	A	385	ASP	3.7
1	A	20	GLN	3.7
1	A	314	ALA	3.5
1	A	290	VAL	3.5
1	B	143	ALA	3.5
1	B	462	ARG	3.2
1	A	19	ARG	3.1
1	A	141	PRO	3.0
1	A	140	VAL	3.0
1	B	21	GLY	2.9
1	A	254	ALA	2.9
1	A	315	SER	2.8
1	A	291	GLY	2.8
1	A	462	ARG	2.8
1	A	282	LEU	2.7
1	B	386	LYS	2.7
1	B	381	ASP	2.6

Continued on next page...

Continued from previous page...

Mol	Chain	Res	Type	RSRZ
1	A	143	ALA	2.6
1	A	317	SER	2.6
1	B	290	VAL	2.6
1	A	289	PRO	2.6
1	A	318	PRO	2.6
1	B	142	MET	2.5
1	B	141	PRO	2.5
1	B	460	ALA	2.4
1	B	458	LEU	2.4
1	B	101	ILE	2.3
1	B	310	TYR	2.3
1	A	142	MET	2.2
1	B	457	CYS	2.2
1	A	139	VAL	2.2
1	A	37	GLU	2.2
1	A	396	PHE	2.2
1	A	292	GLY	2.1
1	A	22	CYS	2.1

6.2 Non-standard residues in protein, DNA, RNA chains [i](#)

There are no non-standard protein/DNA/RNA residues in this entry.

6.3 Carbohydrates [i](#)

There are no monosaccharides in this entry.

6.4 Ligands [i](#)

In the following table, the Atoms column lists the number of modelled atoms in the group and the number defined in the chemical component dictionary. The B-factors column lists the minimum, median, 95th percentile and maximum values of B factors of atoms in the group. The column labelled 'Q< 0.9' lists the number of atoms with occupancy less than 0.9.

Mol	Type	Chain	Res	Atoms	RSCC	RSR	B-factors(\AA^2)	Q<0.9
3	FLC	A	1002	13/13	0.84	0.16	63,74,81,88	0
2	PLR	B	1001	15/15	0.97	0.16	34,42,48,51	0
2	PLR	A	1001	15/15	0.98	0.22	26,35,42,45	0

6.5 Other polymers [i](#)

There are no such residues in this entry.