



Full wwPDB X-ray Structure Validation Report ⓘ

Sep 17, 2023 – 11:42 AM EDT

PDB ID : 4ZCC
Title : Renalase in complex with NADH
Authors : Silvaggi, N.R.; Moran, G.R.; Roman, J.V.
Deposited on : 2015-04-15
Resolution : 2.00 Å(reported)

This is a Full wwPDB X-ray Structure Validation Report for a publicly released PDB entry.

We welcome your comments at validation@mail.wwpdb.org

A user guide is available at

<https://www.wwpdb.org/validation/2017/XrayValidationReportHelp>

with specific help available everywhere you see the ⓘ symbol.

The types of validation reports are described at

<http://www.wwpdb.org/validation/2017/FAQs#types>.

The following versions of software and data (see [references ⓘ](#)) were used in the production of this report:

MolProbity : 4.02b-467
Mogul : 1.8.5 (274361), CSD as541be (2020)
Xtriage (Phenix) : 1.13
EDS : 2.35.1
buster-report : 1.1.7 (2018)
Percentile statistics : 20191225.v01 (using entries in the PDB archive December 25th 2019)
Refmac : 5.8.0158
CCP4 : 7.0.044 (Gargrove)
Ideal geometry (proteins) : Engh & Huber (2001)
Ideal geometry (DNA, RNA) : Parkinson et al. (1996)
Validation Pipeline (wwPDB-VP) : 2.35.1

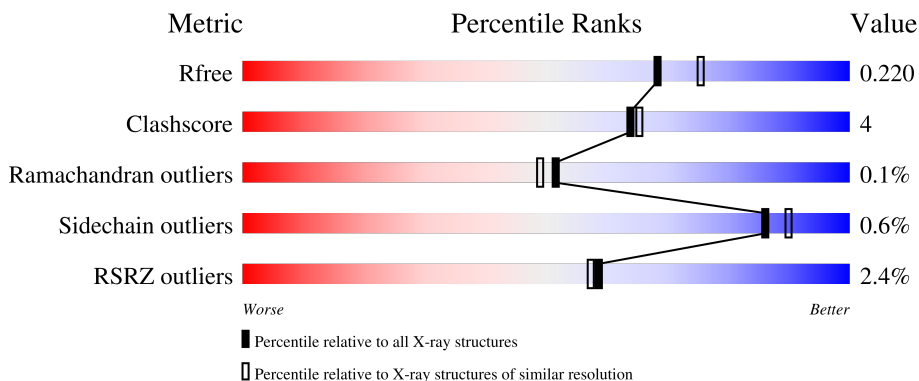
1 Overall quality at a glance

The following experimental techniques were used to determine the structure:

X-RAY DIFFRACTION

The reported resolution of this entry is 2.00 Å.

Percentile scores (ranging between 0-100) for global validation metrics of the entry are shown in the following graphic. The table shows the number of entries on which the scores are based.



Metric	Whole archive (#Entries)	Similar resolution (#Entries, resolution range(Å))
R_{free}	130704	8085 (2.00-2.00)
Clashscore	141614	9178 (2.00-2.00)
Ramachandran outliers	138981	9054 (2.00-2.00)
Sidechain outliers	138945	9053 (2.00-2.00)
RSRZ outliers	127900	7900 (2.00-2.00)

The table below summarises the geometric issues observed across the polymeric chains and their fit to the electron density. The red, orange, yellow and green segments of the lower bar indicate the fraction of residues that contain outliers for ≥ 3 , 2, 1 and 0 types of geometric quality criteria respectively. A grey segment represents the fraction of residues that are not modelled. The numeric value for each fraction is indicated below the corresponding segment, with a dot representing fractions $\leq 5\%$. The upper red bar (where present) indicates the fraction of residues that have poor fit to the electron density. The numeric value is given above the bar.

Mol	Chain	Length	Quality of chain
1	A	336	 2% 89% 6% 5%
1	B	336	 % 88% 7% 5%
1	C	336	 4% 87% 7% . .
1	D	336	 % 87% 11% .

2 Entry composition [i](#)

There are 5 unique types of molecules in this entry. The entry contains 20810 atoms, of which 9759 are hydrogens and 0 are deuteriums.

In the tables below, the ZeroOcc column contains the number of atoms modelled with zero occupancy, the AltConf column contains the number of residues with at least one atom in alternate conformation and the Trace column contains the number of residues modelled with at most 2 atoms.

- Molecule 1 is a protein called Renalase.

Mol	Chain	Residues	Atoms					ZeroOcc	AltConf	Trace	
			Total	C	H	N	O				S
1	A	320	4828	1552	2365	449	450	12	0	0	0
1	B	319	4811	1547	2357	447	448	12	0	0	0
1	C	321	4861	1562	2383	451	453	12	0	2	0
1	D	328	4938	1584	2418	460	464	12	0	0	0

There are 36 discrepancies between the modelled and reference sequences:

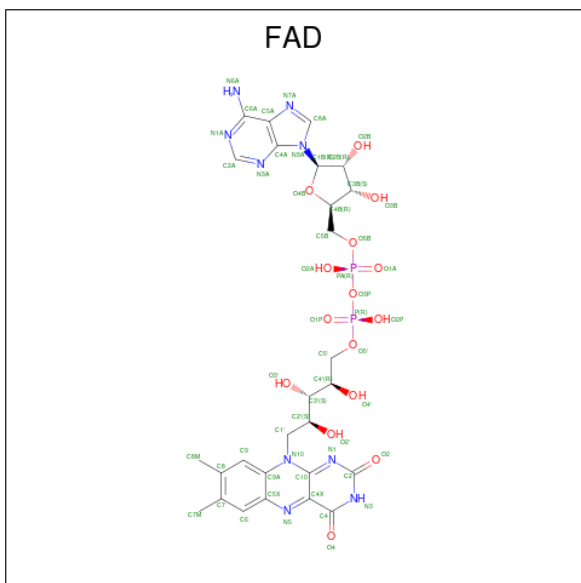
Chain	Residue	Modelled	Actual	Comment	Reference
A	145	SER	GLY	engineered mutation	UNP Q48MT7
A	329	LEU	-	expression tag	UNP Q48MT7
A	330	GLU	-	expression tag	UNP Q48MT7
A	331	HIS	-	expression tag	UNP Q48MT7
A	332	HIS	-	expression tag	UNP Q48MT7
A	333	HIS	-	expression tag	UNP Q48MT7
A	334	HIS	-	expression tag	UNP Q48MT7
A	335	HIS	-	expression tag	UNP Q48MT7
A	336	HIS	-	expression tag	UNP Q48MT7
B	145	SER	GLY	engineered mutation	UNP Q48MT7
B	329	LEU	-	expression tag	UNP Q48MT7
B	330	GLU	-	expression tag	UNP Q48MT7
B	331	HIS	-	expression tag	UNP Q48MT7
B	332	HIS	-	expression tag	UNP Q48MT7
B	333	HIS	-	expression tag	UNP Q48MT7
B	334	HIS	-	expression tag	UNP Q48MT7
B	335	HIS	-	expression tag	UNP Q48MT7
B	336	HIS	-	expression tag	UNP Q48MT7
C	145	SER	GLY	engineered mutation	UNP Q48MT7
C	329	LEU	-	expression tag	UNP Q48MT7
C	330	GLU	-	expression tag	UNP Q48MT7

Continued on next page...

Continued from previous page...

Chain	Residue	Modelled	Actual	Comment	Reference
C	331	HIS	-	expression tag	UNP Q48MT7
C	332	HIS	-	expression tag	UNP Q48MT7
C	333	HIS	-	expression tag	UNP Q48MT7
C	334	HIS	-	expression tag	UNP Q48MT7
C	335	HIS	-	expression tag	UNP Q48MT7
C	336	HIS	-	expression tag	UNP Q48MT7
D	145	SER	GLY	engineered mutation	UNP Q48MT7
D	329	LEU	-	expression tag	UNP Q48MT7
D	330	GLU	-	expression tag	UNP Q48MT7
D	331	HIS	-	expression tag	UNP Q48MT7
D	332	HIS	-	expression tag	UNP Q48MT7
D	333	HIS	-	expression tag	UNP Q48MT7
D	334	HIS	-	expression tag	UNP Q48MT7
D	335	HIS	-	expression tag	UNP Q48MT7
D	336	HIS	-	expression tag	UNP Q48MT7

- Molecule 2 is FLAVIN-ADENINE DINUCLEOTIDE (three-letter code: FAD) (formula: $C_{27}H_{33}N_9O_{15}P_2$).



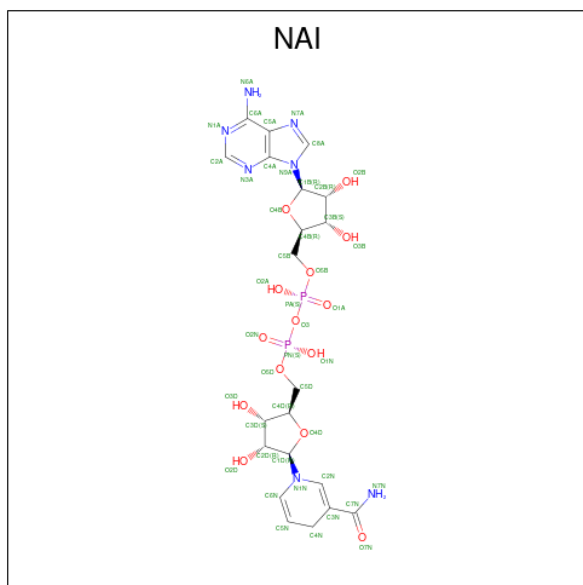
Mol	Chain	Residues	Atoms					ZeroOcc	AltConf	
			Total	C	H	N	O			P
2	A	1	Total	C	H	N	O	P	0	0
			84	27	31	9	15	2		
2	B	1	Total	C	H	N	O	P	0	0
			84	27	31	9	15	2		
2	C	1	Total	C	H	N	O	P	0	0
			84	27	31	9	15	2		

Continued on next page...

Continued from previous page...

Mol	Chain	Residues	Atoms					ZeroOcc	AltConf	
			Total	C	H	N	O			P
2	D	1	84	27	31	9	15	2	0	0

- Molecule 3 is 1,4-DIHYDRONICOTINAMIDE ADENINE DINUCLEOTIDE (three-letter code: NAI) (formula: C₂₁H₂₉N₇O₁₄P₂).



Mol	Chain	Residues	Atoms					ZeroOcc	AltConf	
			Total	C	H	N	O			P
3	A	1	71	21	27	7	14	2	0	0
3	B	1	71	21	27	7	14	2	0	0
3	C	1	71	21	27	7	14	2	0	0
3	D	1	71	21	27	7	14	2	0	0

- Molecule 4 is FORMIC ACID (three-letter code: FMT) (formula: CH₂O₂).



Mol	Chain	Residues	Atoms				ZeroOcc	AltConf
4	A	1	Total	C	H	O	0	0
			4	1	1	2		
4	B	1	Total	C	H	O	0	0
			4	1	1	2		
4	C	1	Total	C	H	O	0	0
			4	1	1	2		
4	D	1	Total	C	H	O	0	0
			4	1	1	2		


- Molecule 5 is water.

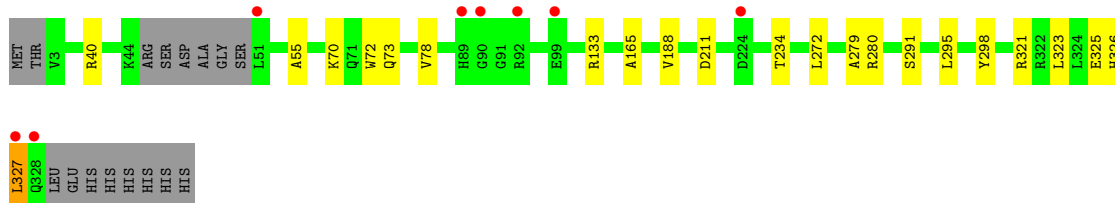
Mol	Chain	Residues	Atoms		ZeroOcc	AltConf
5	A	198	Total	O	0	0
			198	198		
5	B	191	Total	O	0	0
			191	191		
5	C	167	Total	O	0	0
			167	167		
5	D	180	Total	O	0	0
			180	180		

3 Residue-property plots [i](#)


These plots are drawn for all protein, RNA, DNA and oligosaccharide chains in the entry. The first graphic for a chain summarises the proportions of the various outlier classes displayed in the second graphic. The second graphic shows the sequence view annotated by issues in geometry and electron density. Residues are color-coded according to the number of geometric quality criteria for which they contain at least one outlier: green = 0, yellow = 1, orange = 2 and red = 3 or more. A red dot above a residue indicates a poor fit to the electron density ($RSRZ > 2$). Stretches of 2 or more consecutive residues without any outlier are shown as a green connector. Residues present in the sample, but not in the model, are shown in grey.

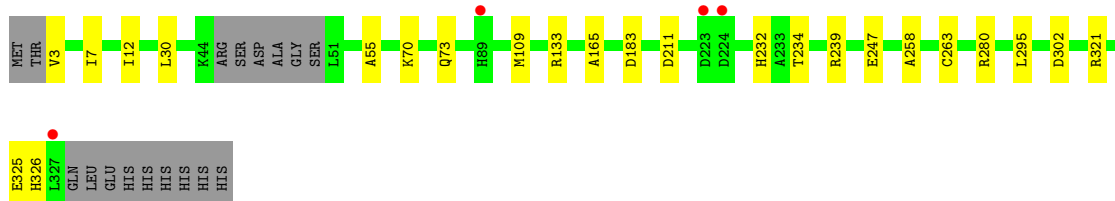
- Molecule 1: Renalase

Chain A: 




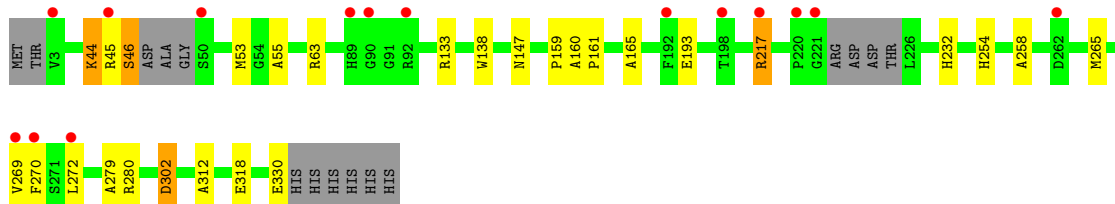
- Molecule 1: Renalase

Chain B: 




- Molecule 1: Renalase

Chain C: 



- Molecule 1: Renalase

Chain D: 





4 Data and refinement statistics

Property	Value	Source
Space group	P 1 21 1	Depositor
Cell constants a, b, c, α , β , γ	63.50Å 71.50Å 143.80Å 90.00° 97.50° 90.00°	Depositor
Resolution (Å)	46.22 – 2.00 46.22 – 2.00	Depositor EDS
% Data completeness (in resolution range)	92.8 (46.22-2.00) 88.7 (46.22-2.00)	Depositor EDS
R_{merge}	0.10	Depositor
R_{sym}	(Not available)	Depositor
$\langle I/\sigma(I) \rangle$ ¹	2.39 (at 2.00Å)	Xtrriage
Refinement program	PHENIX dev_1965	Depositor
R, R_{free}	0.170 , 0.215 0.176 , 0.220	Depositor DCC
R_{free} test set	3000 reflections (3.59%)	wwPDB-VP
Wilson B-factor (Å ²)	22.8	Xtrriage
Anisotropy	0.106	Xtrriage
Bulk solvent k_{sol} (e/Å ³), B_{sol} (Å ²)	0.43 , 52.6	EDS
L-test for twinning ²	$\langle L \rangle = 0.51$, $\langle L^2 \rangle = 0.34$	Xtrriage
Estimated twinning fraction	No twinning to report.	Xtrriage
F_o, F_c correlation	0.96	EDS
Total number of atoms	20810	wwPDB-VP
Average B, all atoms (Å ²)	36.0	wwPDB-VP

Xtrriage's analysis on translational NCS is as follows: *The analyses of the Patterson function reveals a significant off-origin peak that is 79.25 % of the origin peak, indicating pseudo-translational symmetry. The chance of finding a peak of this or larger height randomly in a structure without pseudo-translational symmetry is equal to 5.8182e-07. The detected translational NCS is most likely also responsible for the elevated intensity ratio.*

¹Intensities estimated from amplitudes.

²Theoretical values of $\langle |L| \rangle$, $\langle L^2 \rangle$ for acentric reflections are 0.5, 0.333 respectively for untwinned datasets, and 0.375, 0.2 for perfectly twinned datasets.

5 Model quality [i](#)

5.1 Standard geometry [i](#)

Bond lengths and bond angles in the following residue types are not validated in this section: FMT, FAD, NAI

The Z score for a bond length (or angle) is the number of standard deviations the observed value is removed from the expected value. A bond length (or angle) with $|Z| > 5$ is considered an outlier worth inspection. RMSZ is the root-mean-square of all Z scores of the bond lengths (or angles).

Mol	Chain	Bond lengths		Bond angles	
		RMSZ	# Z >5	RMSZ	# Z >5
1	A	0.69	0/2531	0.76	1/3446 (0.0%)
1	B	0.69	0/2522	0.74	1/3434 (0.0%)
1	C	0.64	0/2556	0.77	1/3477 (0.0%)
1	D	0.66	1/2589 (0.0%)	0.75	0/3525
All	All	0.67	1/10198 (0.0%)	0.75	3/13882 (0.0%)

All (1) bond length outliers are listed below:

Mol	Chain	Res	Type	Atoms	Z	Observed(Å)	Ideal(Å)
1	D	276	TRP	CB-CG	6.21	1.61	1.50

All (3) bond angle outliers are listed below:

Mol	Chain	Res	Type	Atoms	Z	Observed(°)	Ideal(°)
1	C	302	ASP	CB-CG-OD1	6.59	124.23	118.30
1	B	302	ASP	CB-CG-OD1	5.72	123.45	118.30
1	A	40	ARG	NE-CZ-NH2	-5.20	117.70	120.30

There are no chirality outliers.

There are no planarity outliers.

5.2 Too-close contacts [i](#)

In the following table, the Non-H and H(model) columns list the number of non-hydrogen atoms and hydrogen atoms in the chain respectively. The H(added) column lists the number of hydrogen atoms added and optimized by MolProbity. The Clashes column lists the number of clashes within the asymmetric unit, whereas Symm-Clashes lists symmetry-related clashes.

Mol	Chain	Non-H	H(model)	H(added)	Clashes	Symm-Clashes
1	A	2463	2365	2378	19	0
1	B	2454	2357	2370	18	0
1	C	2478	2383	2388	22	1
1	D	2520	2418	2431	28	1
2	A	53	31	31	3	0
2	B	53	31	31	3	0
2	C	53	31	31	5	0
2	D	53	31	31	3	0
3	A	44	27	27	2	0
3	B	44	27	27	3	0
3	C	44	27	27	2	0
3	D	44	27	27	0	0
4	A	3	1	1	0	0
4	B	3	1	1	0	0
4	C	3	1	1	0	0
4	D	3	1	1	1	0
5	A	198	0	0	5	0
5	B	191	0	0	4	0
5	C	167	0	0	4	0
5	D	180	0	0	11	0
All	All	11051	9759	9803	85	1

The all-atom clashscore is defined as the number of clashes found per 1000 atoms (including hydrogen atoms). The all-atom clashscore for this structure is 4.

All (85) close contacts within the same asymmetric unit are listed below, sorted by their clash magnitude.

Atom-1	Atom-2	Interatomic distance (Å)	Clash overlap (Å)
1:B:3:VAL:N	5:B:501:HOH:O	1.85	1.06
1:D:147:ASN:ND2	5:D:501:HOH:O	1.92	1.01
1:B:239:ARG:NH1	5:B:502:HOH:O	2.01	0.91
1:B:280:ARG:HB3	3:B:402:NAI:H42N	1.63	0.80
1:D:23:SER:OG	5:D:503:HOH:O	2.00	0.79
1:B:247:GLU:OE1	5:B:503:HOH:O	2.03	0.77
1:D:310:GLU:OE2	5:D:505:HOH:O	2.08	0.71
1:D:52:ASP:O	1:D:56:GLN:NE2	2.20	0.70
1:D:147:ASN:ND2	5:D:502:HOH:O	1.97	0.70
1:A:326:HIS:ND1	5:A:504:HOH:O	2.28	0.67
1:C:46:SER:O	1:C:46:SER:OG	2.13	0.67
1:A:280:ARG:HB3	3:A:402:NAI:H42N	1.77	0.65
1:B:183:ASP:OD1	1:B:239:ARG:NH2	2.25	0.64
1:B:70:LYS:HD3	1:B:73:GLN:OE1	1.97	0.63

Continued on next page...

Continued from previous page...

Atom-1	Atom-2	Interatomic distance (Å)	Clash overlap (Å)
1:B:321:ARG:NH2	1:B:325:GLU:OE2	2.36	0.58
1:A:280:ARG:HD3	3:A:402:NAI:H42N	1.85	0.57
1:B:326:HIS:ND1	5:B:505:HOH:O	2.32	0.57
1:D:194:THR:O	5:D:506:HOH:O	2.18	0.55
1:A:280:ARG:NH2	5:A:509:HOH:O	2.41	0.54
1:C:63:ARG:NE	5:C:508:HOH:O	2.41	0.53
1:A:291:SER:OG	5:A:502:HOH:O	2.18	0.53
1:B:258:ALA:O	1:D:252:HIS:HD2	1.93	0.51
1:D:193:GLU:HB2	1:D:269:VAL:HG11	1.93	0.51
1:C:53:MET:HB2	5:C:551:HOH:O	2.11	0.50
1:D:216:ASN:OD1	1:D:222:ARG:HG2	2.12	0.50
1:D:53:MET:HB2	5:D:579:HOH:O	2.11	0.50
1:D:8:ILE:HD12	1:D:156:ILE:CD1	2.43	0.49
1:C:254:HIS:CD2	1:C:265:MET:CE	2.95	0.49
1:D:279:ALA:HB1	2:D:401:FAD:HM83	1.96	0.48
1:B:165:ALA:HB2	1:C:165:ALA:HB2	1.95	0.48
1:A:70:LYS:HD3	1:A:73:GLN:OE1	2.14	0.48
1:A:211:ASP:HB3	1:A:234:THR:HG22	1.95	0.47
1:C:280:ARG:NH2	5:C:510:HOH:O	2.45	0.47
1:D:212:TRP:CZ2	1:D:214:ALA:HB2	2.50	0.47
1:D:115:ALA:HB3	5:D:614:HOH:O	2.14	0.46
1:C:55:ALA:HA	2:C:401:FAD:N5	2.30	0.46
1:D:55:ALA:HA	2:D:401:FAD:N5	2.30	0.46
1:D:147:ASN:HB2	5:D:502:HOH:O	2.15	0.46
1:D:164:THR:HG21	5:D:626:HOH:O	2.15	0.46
1:A:133:ARG:NH1	1:A:295:LEU:O	2.45	0.46
1:A:321:ARG:NH1	1:A:325:GLU:OE1	2.48	0.46
1:A:165:ALA:HB2	1:D:165:ALA:HB2	1.98	0.45
1:D:98:ASP:OD1	5:D:507:HOH:O	2.21	0.45
1:D:160:ALA:HB3	1:D:161:PRO:HD3	1.99	0.44
1:B:55:ALA:O	1:B:109:MET:HG3	2.17	0.44
2:A:401:FAD:H2B	5:A:520:HOH:O	2.18	0.44
1:C:302:ASP:HB3	1:C:312:ALA:HB2	2.00	0.44
1:B:280:ARG:CB	3:B:402:NAI:H42N	2.41	0.44
1:C:280:ARG:HD3	3:C:402:NAI:C5N	2.48	0.44
1:D:81:TRP:CG	1:D:83:PRO:HD3	2.51	0.44
1:A:55:ALA:HA	2:A:401:FAD:N5	2.33	0.44
1:B:55:ALA:HA	2:B:401:FAD:N5	2.33	0.44
1:B:7:ILE:HB	1:B:30:LEU:HD23	2.00	0.43
1:C:232:HIS:CE1	2:C:401:FAD:H6	2.53	0.43
1:A:165:ALA:HB2	5:A:512:HOH:O	2.18	0.43

Continued on next page...

Continued from previous page...

Atom-1	Atom-2	Interatomic distance (Å)	Clash overlap (Å)
1:D:270:PHE:CZ	1:D:272:LEU:HG	2.54	0.43
1:C:44:LYS:HE3	1:C:45:ARG:O	2.18	0.43
1:A:323:LEU:HD23	1:A:327:LEU:HG	1.99	0.43
1:B:133:ARG:NH1	1:B:295:LEU:O	2.49	0.43
1:C:160:ALA:HB3	1:C:161:PRO:HD3	2.01	0.43
1:D:110:SER:HB2	4:D:403:FMT:H	2.01	0.43
1:C:270:PHE:CZ	1:C:272:LEU:HG	2.54	0.42
1:D:197:GLN:CB	5:D:510:HOH:O	2.67	0.42
1:A:72:TRP:HB3	1:A:78:VAL:HG13	2.00	0.42
1:A:279:ALA:HB1	2:A:401:FAD:HM83	2.00	0.42
1:C:279:ALA:HB1	2:C:401:FAD:HM83	2.00	0.42
1:D:213:LEU:HA	1:D:230:VAL:O	2.19	0.42
2:B:401:FAD:C9A	3:B:402:NAI:H4N	2.50	0.42
1:C:258:ALA:HB2	1:C:265:MET:CE	2.50	0.42
1:A:188:VAL:HA	1:A:272:LEU:O	2.19	0.41
1:B:263:CYS:O	1:D:251:GLU:OE2	2.38	0.41
1:A:73:GLN:HG3	1:A:78:VAL:CG2	2.50	0.41
1:D:160:ALA:O	1:D:164:THR:HG23	2.20	0.41
1:A:323:LEU:HD23	1:A:323:LEU:C	2.40	0.41
1:C:159:PRO:HD3	2:C:401:FAD:H51A	2.03	0.41
1:C:55:ALA:HA	2:C:401:FAD:C5X	2.51	0.41
1:C:133:ARG:HB3	1:C:138:TRP:CD2	2.56	0.40
1:C:193:GLU:HB2	1:C:269:VAL:HG11	2.02	0.40
1:C:217:ARG:HB2	5:C:588:HOH:O	2.21	0.40
1:B:232:HIS:CE1	2:B:401:FAD:H6	2.56	0.40
1:C:280:ARG:HB3	3:C:402:NAI:H5N	2.03	0.40
1:A:291:SER:HB2	1:A:298:TYR:CD2	2.56	0.40
1:B:211:ASP:HB3	1:B:234:THR:HG22	2.02	0.40
1:D:279:ALA:CB	2:D:401:FAD:HM83	2.51	0.40

All (1) symmetry-related close contacts are listed below. The label for Atom-2 includes the symmetry operator and encoded unit-cell translations to be applied.

Atom-1	Atom-2	Interatomic distance (Å)	Clash overlap (Å)
1:C:318:GLU:OE2	1:D:225:THR:OG1[2_553]	1.97	0.23

5.3 Torsion angles [i](#)

5.3.1 Protein backbone [i](#)

In the following table, the Percentiles column shows the percent Ramachandran outliers of the chain as a percentile score with respect to all X-ray entries followed by that with respect to entries of similar resolution.

The Analysed column shows the number of residues for which the backbone conformation was analysed, and the total number of residues.

Mol	Chain	Analysed	Favoured	Allowed	Outliers	Percentiles	
1	A	316/336 (94%)	310 (98%)	5 (2%)	1 (0%)	41	37
1	B	315/336 (94%)	310 (98%)	5 (2%)	0	100	100
1	C	317/336 (94%)	314 (99%)	3 (1%)	0	100	100
1	D	326/336 (97%)	323 (99%)	3 (1%)	0	100	100
All	All	1274/1344 (95%)	1257 (99%)	16 (1%)	1 (0%)	51	49

All (1) Ramachandran outliers are listed below:

Mol	Chain	Res	Type
1	A	327	LEU

5.3.2 Protein sidechains [i](#)

In the following table, the Percentiles column shows the percent sidechain outliers of the chain as a percentile score with respect to all X-ray entries followed by that with respect to entries of similar resolution.

The Analysed column shows the number of residues for which the sidechain conformation was analysed, and the total number of residues.

Mol	Chain	Analysed	Rotameric	Outliers	Percentiles	
1	A	252/266 (95%)	252 (100%)	0	100	100
1	B	251/266 (94%)	250 (100%)	1 (0%)	91	93
1	C	255/266 (96%)	251 (98%)	4 (2%)	62	67
1	D	258/266 (97%)	257 (100%)	1 (0%)	91	93
All	All	1016/1064 (96%)	1010 (99%)	6 (1%)	86	90

All (6) residues with a non-rotameric sidechain are listed below:

Mol	Chain	Res	Type
1	B	12	ILE
1	C	44	LYS
1	C	46	SER
1	C	147	ASN
1	C	217	ARG
1	D	173	LEU

Sometimes sidechains can be flipped to improve hydrogen bonding and reduce clashes. All (4) such sidechains are listed below:

Mol	Chain	Res	Type
1	A	153	HIS
1	A	326	HIS
1	B	153	HIS
1	C	153	HIS

5.3.3 RNA [i](#)

There are no RNA molecules in this entry.

5.4 Non-standard residues in protein, DNA, RNA chains [i](#)

There are no non-standard protein/DNA/RNA residues in this entry.

5.5 Carbohydrates [i](#)

There are no monosaccharides in this entry.

5.6 Ligand geometry [i](#)

12 ligands are modelled in this entry.

In the following table, the Counts columns list the number of bonds (or angles) for which Mogul statistics could be retrieved, the number of bonds (or angles) that are observed in the model and the number of bonds (or angles) that are defined in the Chemical Component Dictionary. The Link column lists molecule types, if any, to which the group is linked. The Z score for a bond length (or angle) is the number of standard deviations the observed value is removed from the expected value. A bond length (or angle) with $|Z| > 2$ is considered an outlier worth inspection. RMSZ is the root-mean-square of all Z scores of the bond lengths (or angles).

Mol	Type	Chain	Res	Link	Bond lengths			Bond angles		
					Counts	RMSZ	# Z > 2	Counts	RMSZ	# Z > 2
2	FAD	B	401	-	53,58,58	1.48	10 (18%)	68,89,89	1.21	8 (11%)
3	NAI	C	402	-	42,48,48	1.09	4 (9%)	47,73,73	1.48	6 (12%)
2	FAD	D	401	-	53,58,58	1.56	9 (16%)	68,89,89	1.56	11 (16%)
3	NAI	B	402	-	42,48,48	0.90	1 (2%)	47,73,73	1.48	7 (14%)
4	FMT	A	403	-	2,2,2	0.79	0	1,1,1	0.15	0
4	FMT	B	403	-	2,2,2	0.79	0	1,1,1	0.37	0
2	FAD	A	401	-	53,58,58	1.29	4 (7%)	68,89,89	1.39	11 (16%)
4	FMT	D	403	-	2,2,2	0.69	0	1,1,1	0.39	0
2	FAD	C	401	-	53,58,58	1.35	6 (11%)	68,89,89	1.53	14 (20%)
4	FMT	C	403	-	2,2,2	0.68	0	1,1,1	0.34	0
3	NAI	D	402	-	42,48,48	1.07	3 (7%)	47,73,73	2.00	10 (21%)
3	NAI	A	402	-	42,48,48	0.98	2 (4%)	47,73,73	1.56	9 (19%)

In the following table, the Chirals column lists the number of chiral outliers, the number of chiral centers analysed, the number of these observed in the model and the number defined in the Chemical Component Dictionary. Similar counts are reported in the Torsion and Rings columns. '-' means no outliers of that kind were identified.

Mol	Type	Chain	Res	Link	Chirals	Torsions	Rings
2	FAD	B	401	-	-	6/30/50/50	0/6/6/6
3	NAI	C	402	-	-	8/25/72/72	0/5/5/5
2	FAD	D	401	-	-	6/30/50/50	0/6/6/6
3	NAI	B	402	-	-	5/25/72/72	0/5/5/5
2	FAD	A	401	-	-	3/30/50/50	0/6/6/6
2	FAD	C	401	-	-	2/30/50/50	0/6/6/6
3	NAI	D	402	-	-	10/25/72/72	0/5/5/5
3	NAI	A	402	-	-	8/25/72/72	0/5/5/5

All (39) bond length outliers are listed below:

Mol	Chain	Res	Type	Atoms	Z	Observed(Å)	Ideal(Å)
2	D	401	FAD	C9A-C5X	5.89	1.51	1.41
2	A	401	FAD	C9A-C5X	5.24	1.50	1.41
2	C	401	FAD	C9A-C5X	5.14	1.49	1.41
2	B	401	FAD	C9A-C5X	4.94	1.49	1.41
2	D	401	FAD	C1'-C2'	-4.77	1.45	1.52
3	D	402	NAI	C6N-C5N	3.67	1.39	1.33
3	C	402	NAI	C6N-C5N	3.63	1.39	1.33
3	A	402	NAI	C6N-C5N	3.52	1.39	1.33

Continued on next page...

Continued from previous page...

Mol	Chain	Res	Type	Atoms	Z	Observed(Å)	Ideal(Å)
2	B	401	FAD	C2A-N3A	3.51	1.37	1.32
2	B	401	FAD	C1'-C2'	-3.34	1.47	1.52
2	C	401	FAD	O4B-C1B	3.17	1.45	1.41
3	B	402	NAI	C6N-C5N	3.03	1.38	1.33
2	D	401	FAD	C4X-N5	2.99	1.36	1.30
2	C	401	FAD	C4X-N5	2.89	1.36	1.30
2	B	401	FAD	C8-C7	2.74	1.47	1.40
2	C	401	FAD	C8-C7	2.69	1.47	1.40
3	D	402	NAI	O4B-C1B	2.66	1.44	1.41
2	D	401	FAD	C8-C7	2.65	1.47	1.40
2	A	401	FAD	C8-C7	2.59	1.47	1.40
2	B	401	FAD	C5A-C4A	2.55	1.47	1.40
3	D	402	NAI	C5A-C4A	2.52	1.47	1.40
2	D	401	FAD	C5'-C4'	2.50	1.55	1.51
2	B	401	FAD	O2-C2	2.43	1.28	1.24
3	C	402	NAI	C5A-C4A	2.43	1.47	1.40
2	D	401	FAD	C5A-C4A	2.36	1.47	1.40
2	B	401	FAD	C5'-C4'	2.31	1.55	1.51
2	D	401	FAD	C4'-C3'	-2.28	1.49	1.53
2	B	401	FAD	C5X-N5	-2.27	1.35	1.39
2	D	401	FAD	C2A-N3A	2.27	1.35	1.32
3	C	402	NAI	C2B-C1B	-2.26	1.50	1.53
2	B	401	FAD	C4-N3	-2.23	1.34	1.38
3	C	402	NAI	O4B-C1B	2.20	1.44	1.41
2	D	401	FAD	C2-N3	-2.19	1.33	1.39
2	C	401	FAD	C1'-C2'	-2.18	1.49	1.52
2	A	401	FAD	C2A-N3A	2.11	1.35	1.32
2	A	401	FAD	C4X-N5	2.08	1.34	1.30
2	B	401	FAD	C4X-N5	2.08	1.34	1.30
2	C	401	FAD	C5X-N5	-2.07	1.35	1.39
3	A	402	NAI	C5A-C4A	2.06	1.46	1.40

All (76) bond angle outliers are listed below:

Mol	Chain	Res	Type	Atoms	Z	Observed(°)	Ideal(°)
3	D	402	NAI	C1D-N1N-C2N	-6.69	109.98	121.11
3	D	402	NAI	C4D-O4D-C1D	-5.32	97.73	109.47
3	A	402	NAI	C1D-N1N-C2N	-4.56	113.52	121.11
3	C	402	NAI	C1D-N1N-C2N	-4.46	113.68	121.11
3	D	402	NAI	O4D-C1D-N1N	4.35	116.56	108.06
2	C	401	FAD	N3A-C2A-N1A	-4.21	122.09	128.68
2	D	401	FAD	C4-C4X-N5	4.20	124.21	118.23

Continued on next page...

Continued from previous page...

Mol	Chain	Res	Type	Atoms	Z	Observed(°)	Ideal(°)
3	B	402	NAI	C3B-C2B-C1B	4.16	107.24	100.98
2	D	401	FAD	N3A-C2A-N1A	-4.01	122.41	128.68
3	A	402	NAI	N3A-C2A-N1A	-3.94	122.52	128.68
2	C	401	FAD	O4-C4-C4X	-3.90	116.25	126.60
3	C	402	NAI	N3A-C2A-N1A	-3.54	123.15	128.68
3	D	402	NAI	N3A-C2A-N1A	-3.53	123.16	128.68
2	D	401	FAD	C5'-C4'-C3'	-3.48	105.48	112.20
2	A	401	FAD	N3A-C2A-N1A	-3.47	123.26	128.68
3	B	402	NAI	N3A-C2A-N1A	-3.41	123.35	128.68
3	B	402	NAI	C1D-N1N-C2N	-3.39	115.47	121.11
2	D	401	FAD	C1'-N10-C9A	3.38	126.14	120.51
2	A	401	FAD	C5'-C4'-C3'	-3.37	105.69	112.20
2	B	401	FAD	N3A-C2A-N1A	-3.35	123.44	128.68
3	A	402	NAI	C3D-C2D-C1D	-3.20	95.34	101.43
2	D	401	FAD	O4-C4-C4X	-3.19	118.13	126.60
3	A	402	NAI	C4D-O4D-C1D	-3.17	102.47	109.47
3	C	402	NAI	O4D-C1D-N1N	3.14	114.20	108.06
2	B	401	FAD	C5'-C4'-C3'	-3.12	106.19	112.20
2	A	401	FAD	O4-C4-C4X	-3.09	118.39	126.60
2	D	401	FAD	C10-N1-C2	3.09	123.09	116.90
3	D	402	NAI	C1D-N1N-C6N	3.09	127.48	120.83
3	C	402	NAI	C4D-O4D-C1D	-3.02	102.80	109.47
2	C	401	FAD	C5'-C4'-C3'	-2.99	106.43	112.20
3	A	402	NAI	C3B-C2B-C1B	2.88	105.31	100.98
2	A	401	FAD	C4A-C5A-N7A	-2.86	106.42	109.40
3	B	402	NAI	N6A-C6A-N1A	2.84	124.47	118.57
3	D	402	NAI	C2D-C3D-C4D	-2.83	97.14	102.64
2	C	401	FAD	C4-C4X-N5	2.81	122.22	118.23
2	D	401	FAD	O2'-C2'-C1'	-2.73	103.21	109.80
3	B	402	NAI	C5A-C6A-N6A	-2.72	116.21	120.35
2	B	401	FAD	C10-N1-C2	2.64	122.18	116.90
3	D	402	NAI	O7N-C7N-C3N	-2.62	115.96	120.90
2	A	401	FAD	C4X-C10-N10	2.53	120.18	116.48
2	A	401	FAD	O4-C4-N3	2.53	124.96	120.12
2	D	401	FAD	C1'-C2'-C3'	-2.52	102.75	109.79
3	D	402	NAI	C5B-C4B-C3B	-2.49	105.86	115.18
2	D	401	FAD	C4X-C4-N3	2.47	119.46	113.19
3	B	402	NAI	C3D-C2D-C1D	-2.45	96.76	101.43
2	B	401	FAD	O4-C4-C4X	-2.45	120.11	126.60
2	B	401	FAD	C4-C4X-N5	2.45	121.71	118.23
2	A	401	FAD	O2-C2-N1	-2.45	117.78	121.83
2	C	401	FAD	C1'-N10-C9A	2.43	124.56	120.51

Continued on next page...

Continued from previous page...

Mol	Chain	Res	Type	Atoms	Z	Observed(°)	Ideal(°)
2	C	401	FAD	O4-C4-N3	2.42	124.75	120.12
3	C	402	NAI	O7N-C7N-C3N	-2.40	116.38	120.90
2	B	401	FAD	C4A-C5A-N7A	-2.39	106.91	109.40
2	B	401	FAD	C4X-C10-N1	-2.38	119.22	124.73
2	C	401	FAD	O2P-P-O1P	2.33	123.75	112.24
2	A	401	FAD	C5X-C9A-N10	2.30	120.33	117.95
3	A	402	NAI	O7N-C7N-C3N	-2.28	116.59	120.90
2	A	401	FAD	C1'-N10-C9A	2.28	124.32	120.51
2	C	401	FAD	C4X-C4-N3	2.28	118.99	113.19
2	A	401	FAD	C9A-N10-C10	-2.27	117.23	120.77
2	C	401	FAD	C9A-C5X-N5	-2.26	119.98	122.43
3	A	402	NAI	C5A-C6A-N6A	-2.26	116.92	120.35
3	C	402	NAI	O2A-PA-O1A	2.25	123.34	112.24
2	C	401	FAD	C4-N3-C2	-2.24	121.50	125.64
2	C	401	FAD	C10-N1-C2	2.23	121.36	116.90
3	D	402	NAI	PN-O3-PA	-2.22	125.19	132.83
3	A	402	NAI	C3N-C7N-N7N	2.21	121.59	117.67
2	D	401	FAD	C4X-C10-N10	2.21	119.70	116.48
3	B	402	NAI	C3N-C2N-N1N	-2.18	119.98	123.10
2	C	401	FAD	O2-C2-N1	-2.18	118.22	121.83
2	C	401	FAD	C4X-C10-N1	-2.18	119.68	124.73
2	A	401	FAD	C1B-N9A-C4A	-2.09	122.97	126.64
2	B	401	FAD	C4X-C10-N10	2.07	119.51	116.48
3	D	402	NAI	O5B-PA-O1A	-2.06	101.03	109.07
2	C	401	FAD	P-O3P-PA	-2.05	125.80	132.83
2	D	401	FAD	C9A-C5X-N5	-2.03	120.23	122.43
3	A	402	NAI	N6A-C6A-N1A	2.00	122.73	118.57

There are no chirality outliers.

All (48) torsion outliers are listed below:

Mol	Chain	Res	Type	Atoms
3	A	402	NAI	O4B-C4B-C5B-O5B
3	A	402	NAI	C3B-C4B-C5B-O5B
3	C	402	NAI	C5D-O5D-PN-O3
3	C	402	NAI	C5D-O5D-PN-O1N
3	C	402	NAI	O4D-C1D-N1N-C2N
3	C	402	NAI	C2N-C3N-C7N-N7N
3	D	402	NAI	C5D-O5D-PN-O2N
3	D	402	NAI	O4D-C1D-N1N-C2N
3	B	402	NAI	O4D-C4D-C5D-O5D
3	D	402	NAI	C3B-C4B-C5B-O5B

Continued on next page...

Continued from previous page...

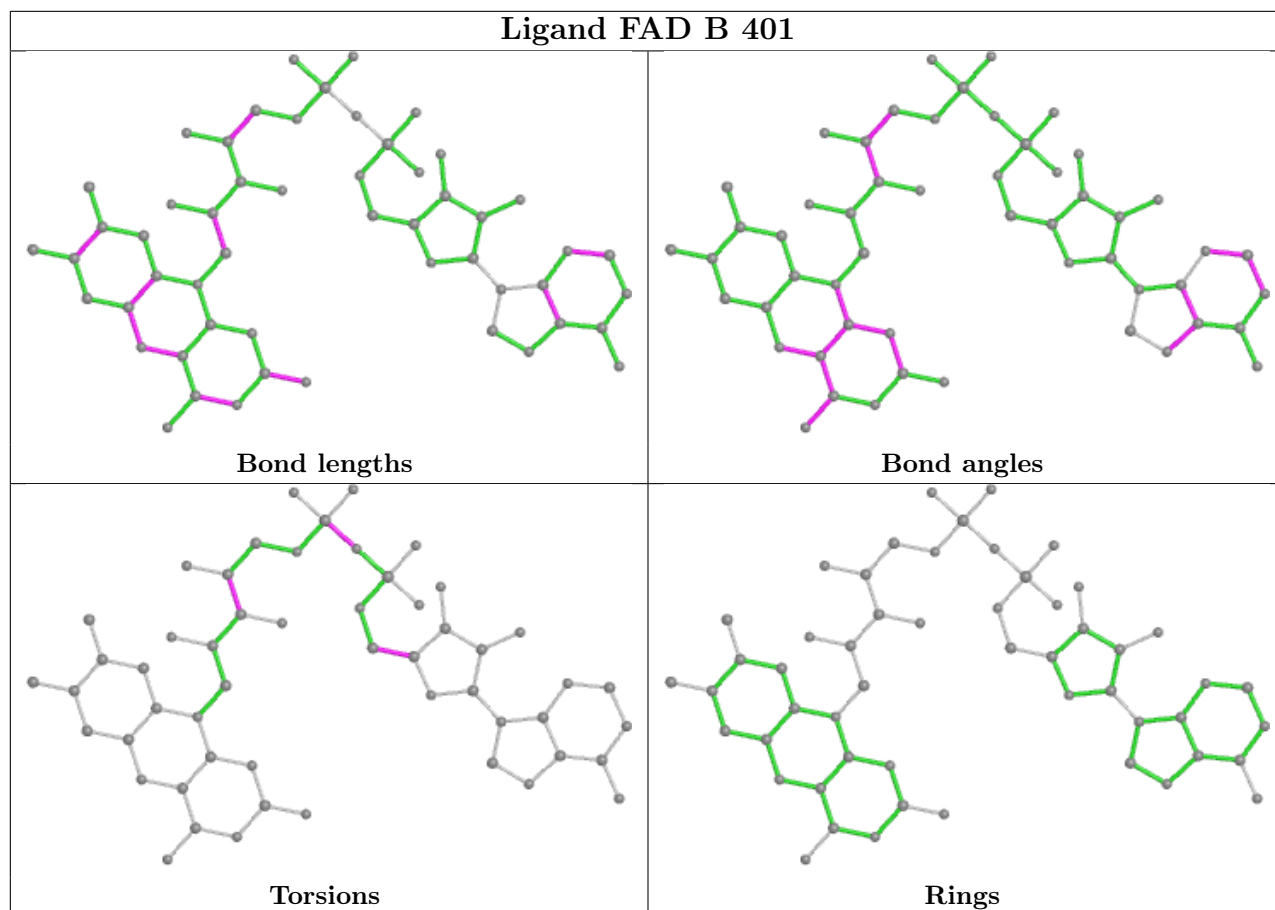
Mol	Chain	Res	Type	Atoms
3	B	402	NAI	C3D-C4D-C5D-O5D
3	D	402	NAI	O4B-C4B-C5B-O5B
3	A	402	NAI	O4D-C1D-N1N-C2N
3	A	402	NAI	O4D-C4D-C5D-O5D
3	C	402	NAI	O4D-C4D-C5D-O5D
2	B	401	FAD	C2'-C3'-C4'-O4'
2	D	401	FAD	C2'-C3'-C4'-O4'
3	B	402	NAI	O4D-C1D-N1N-C2N
3	A	402	NAI	PA-O3-PN-O2N
3	B	402	NAI	PA-O3-PN-O2N
2	A	401	FAD	PA-O3P-P-O5'
2	B	401	FAD	PA-O3P-P-O5'
2	C	401	FAD	PA-O3P-P-O5'
2	D	401	FAD	PA-O3P-P-O5'
3	A	402	NAI	PN-O3-PA-O5B
3	D	402	NAI	PN-O3-PA-O5B
2	D	401	FAD	C2'-C3'-C4'-C5'
2	B	401	FAD	C2'-C3'-C4'-C5'
3	D	402	NAI	C5D-O5D-PN-O1N
3	D	402	NAI	C2N-C3N-C7N-N7N
3	A	402	NAI	C3D-C4D-C5D-O5D
3	C	402	NAI	C2N-C3N-C7N-O7N
3	D	402	NAI	C2N-C3N-C7N-O7N
3	A	402	NAI	PA-O3-PN-O1N
3	B	402	NAI	PA-O3-PN-O1N
2	B	401	FAD	O3'-C3'-C4'-C5'
2	B	401	FAD	O3'-C3'-C4'-O4'
3	D	402	NAI	O4D-C4D-C5D-O5D
3	C	402	NAI	C3D-C4D-C5D-O5D
3	D	402	NAI	C5D-O5D-PN-O3
2	A	401	FAD	O4B-C4B-C5B-O5B
2	B	401	FAD	O4B-C4B-C5B-O5B
2	D	401	FAD	O4B-C4B-C5B-O5B
3	C	402	NAI	PA-O3-PN-O1N
2	D	401	FAD	O3'-C3'-C4'-O4'
2	C	401	FAD	O4B-C4B-C5B-O5B
2	A	401	FAD	O3'-C3'-C4'-C5'
2	D	401	FAD	O3'-C3'-C4'-C5'

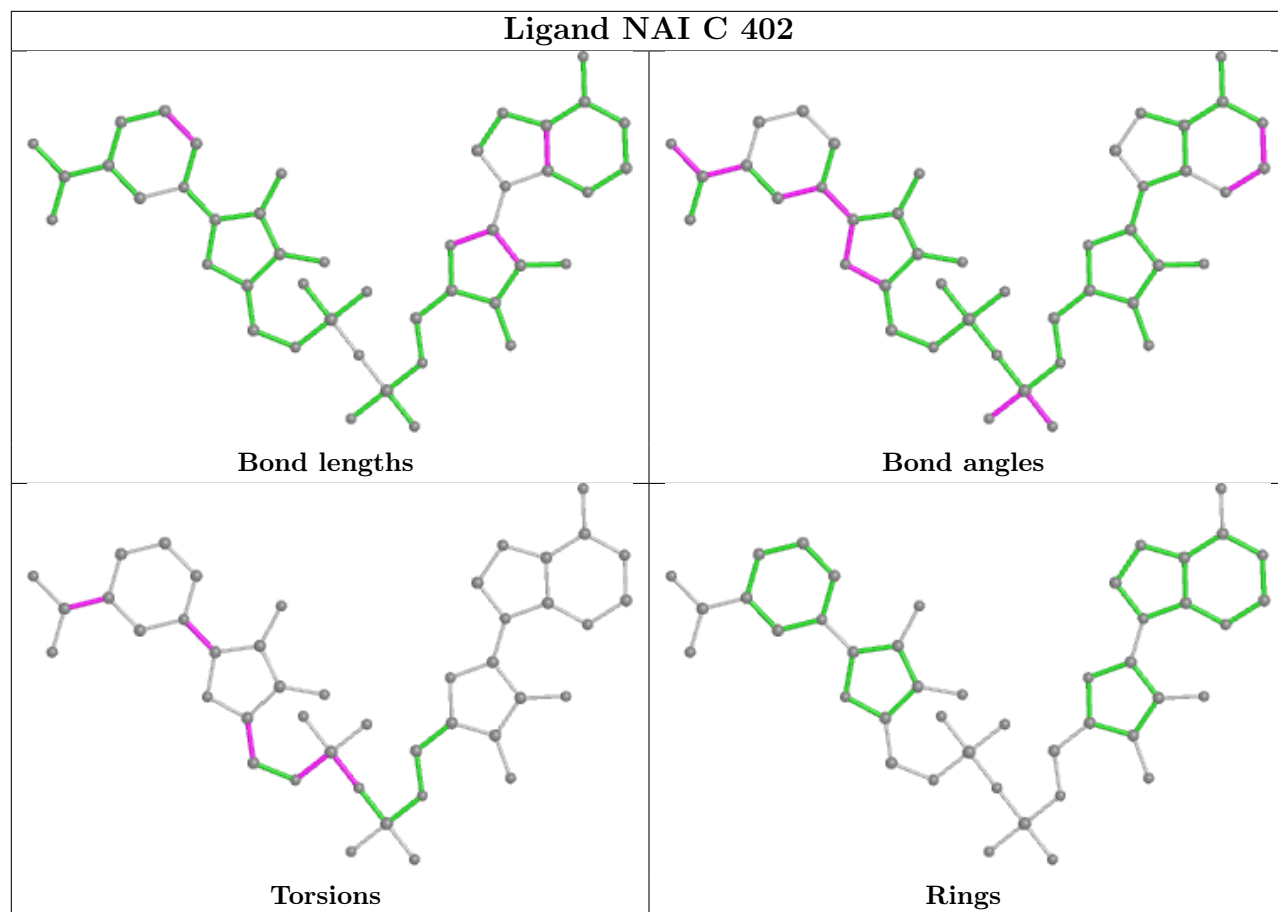
There are no ring outliers.

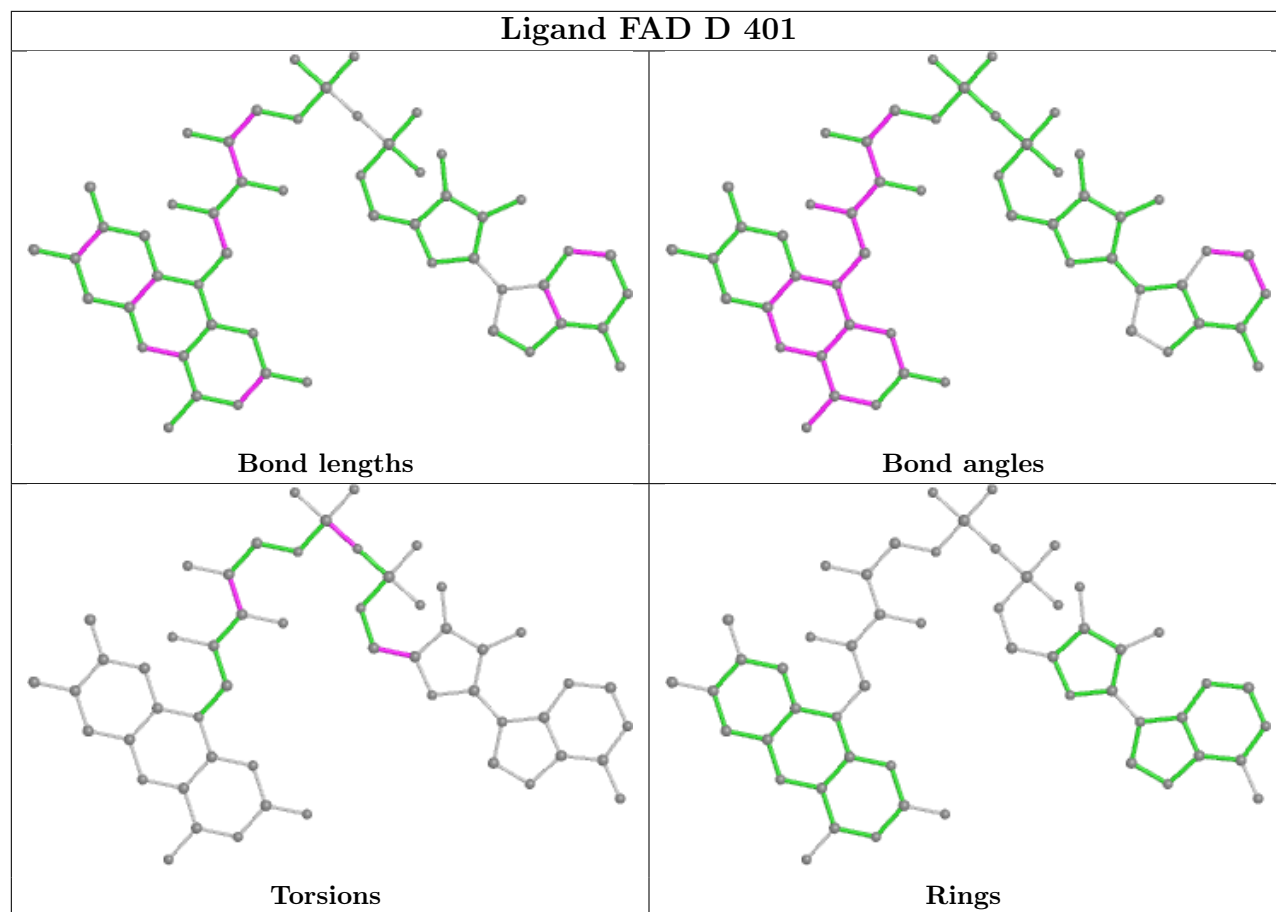
8 monomers are involved in 21 short contacts:

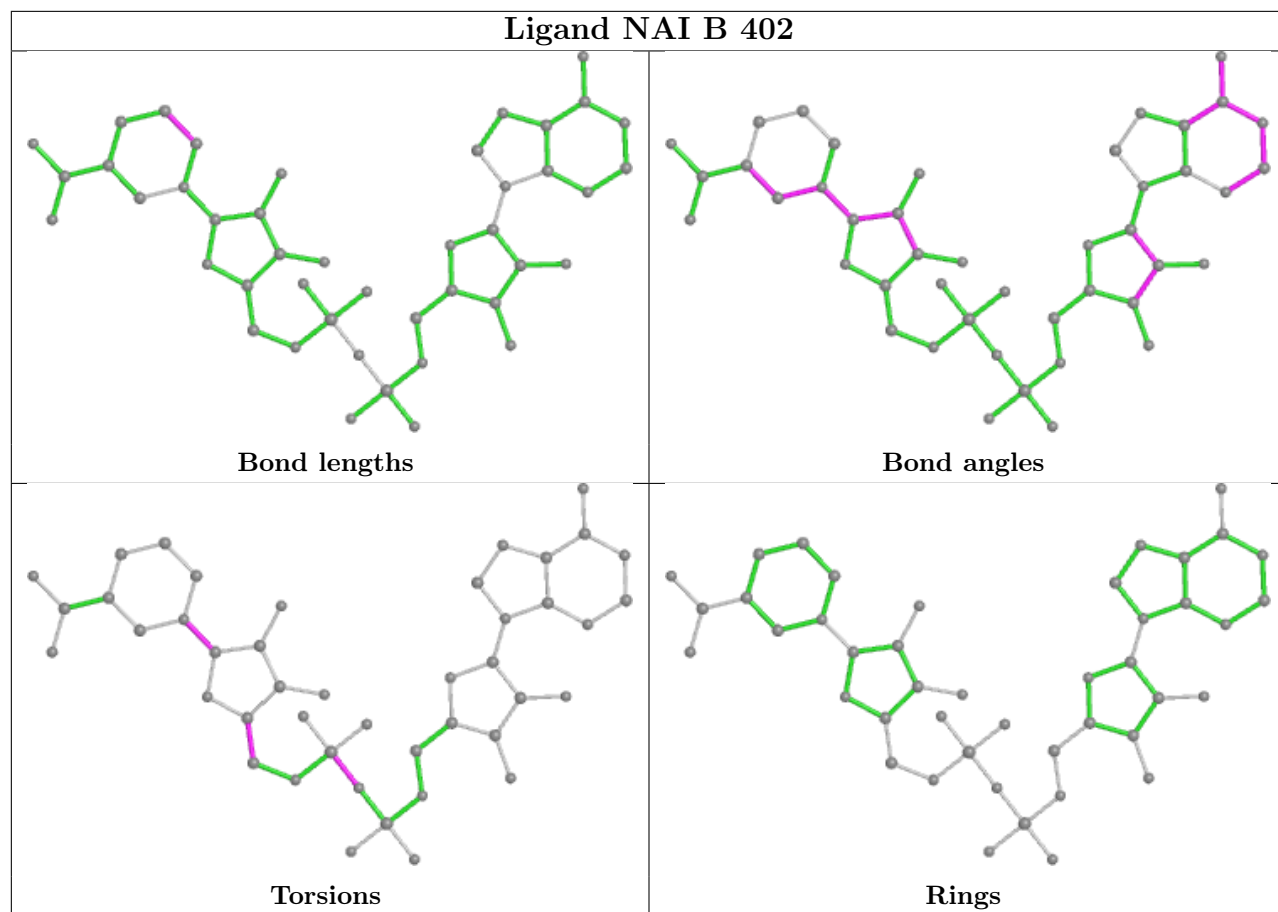
Mol	Chain	Res	Type	Clashes	Symm-Clashes
2	B	401	FAD	3	0
3	C	402	NAI	2	0
2	D	401	FAD	3	0
3	B	402	NAI	3	0
2	A	401	FAD	3	0
4	D	403	FMT	1	0
2	C	401	FAD	5	0
3	A	402	NAI	2	0

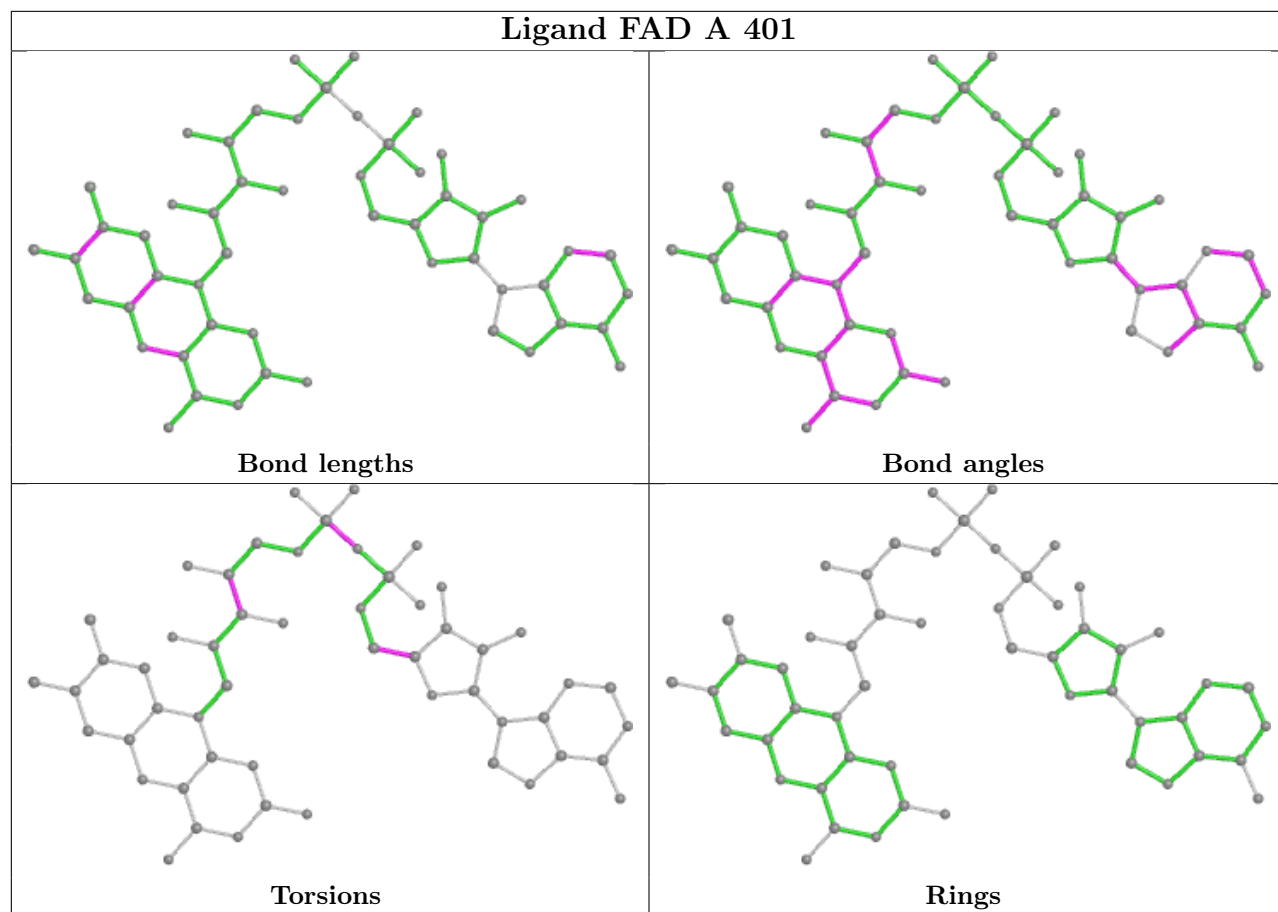
The following is a two-dimensional graphical depiction of Mogul quality analysis of bond lengths, bond angles, torsion angles, and ring geometry for all instances of the Ligand of Interest. In addition, ligands with molecular weight > 250 and outliers as shown on the validation Tables will also be included. For torsion angles, if less than 5% of the Mogul distribution of torsion angles is within 10 degrees of the torsion angle in question, then that torsion angle is considered an outlier. Any bond that is central to one or more torsion angles identified as an outlier by Mogul will be highlighted in the graph. For rings, the root-mean-square deviation (RMSD) between the ring in question and similar rings identified by Mogul is calculated over all ring torsion angles. If the average RMSD is greater than 60 degrees and the minimal RMSD between the ring in question and any Mogul-identified rings is also greater than 60 degrees, then that ring is considered an outlier. The outliers are highlighted in purple. The color gray indicates Mogul did not find sufficient equivalents in the CSD to analyse the geometry.

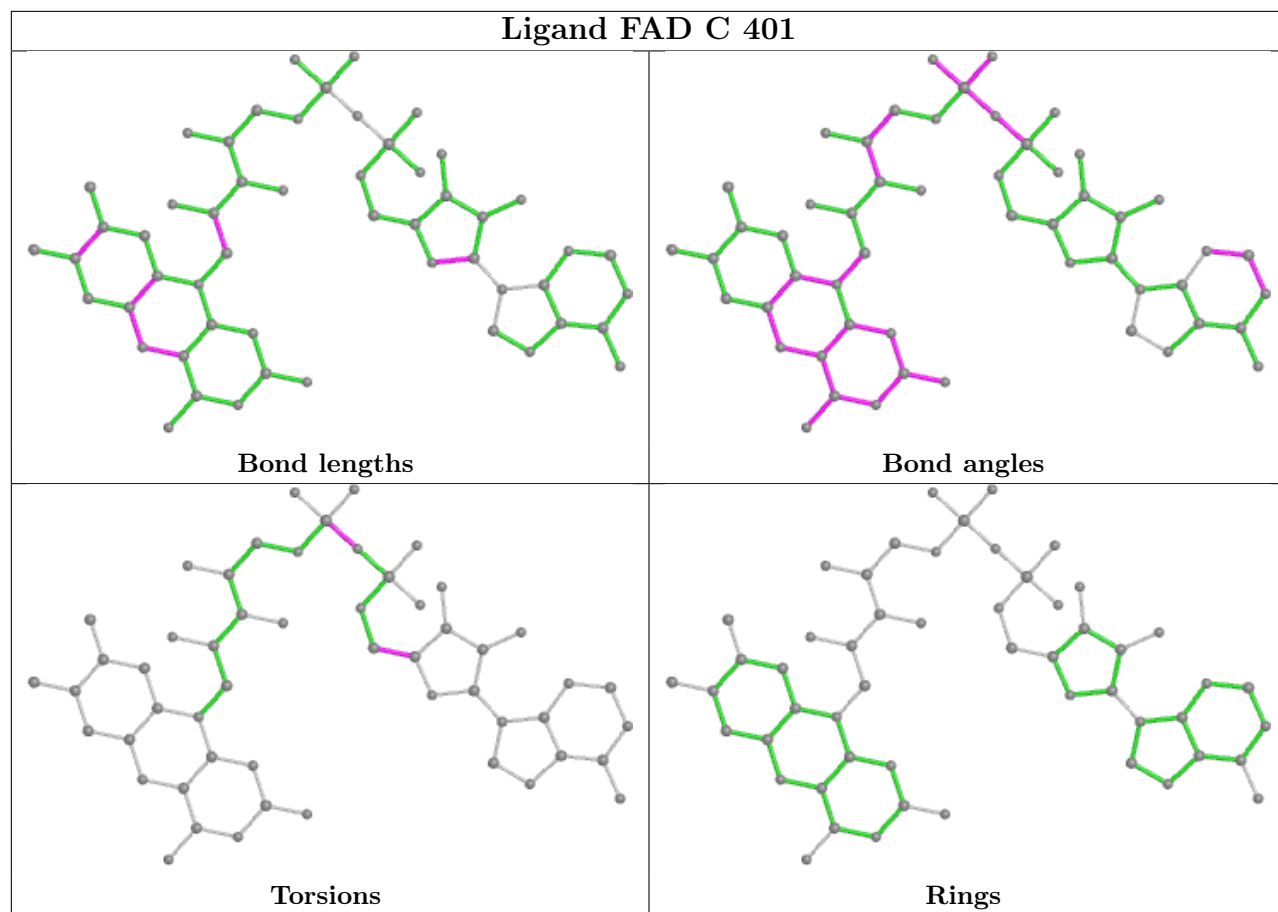


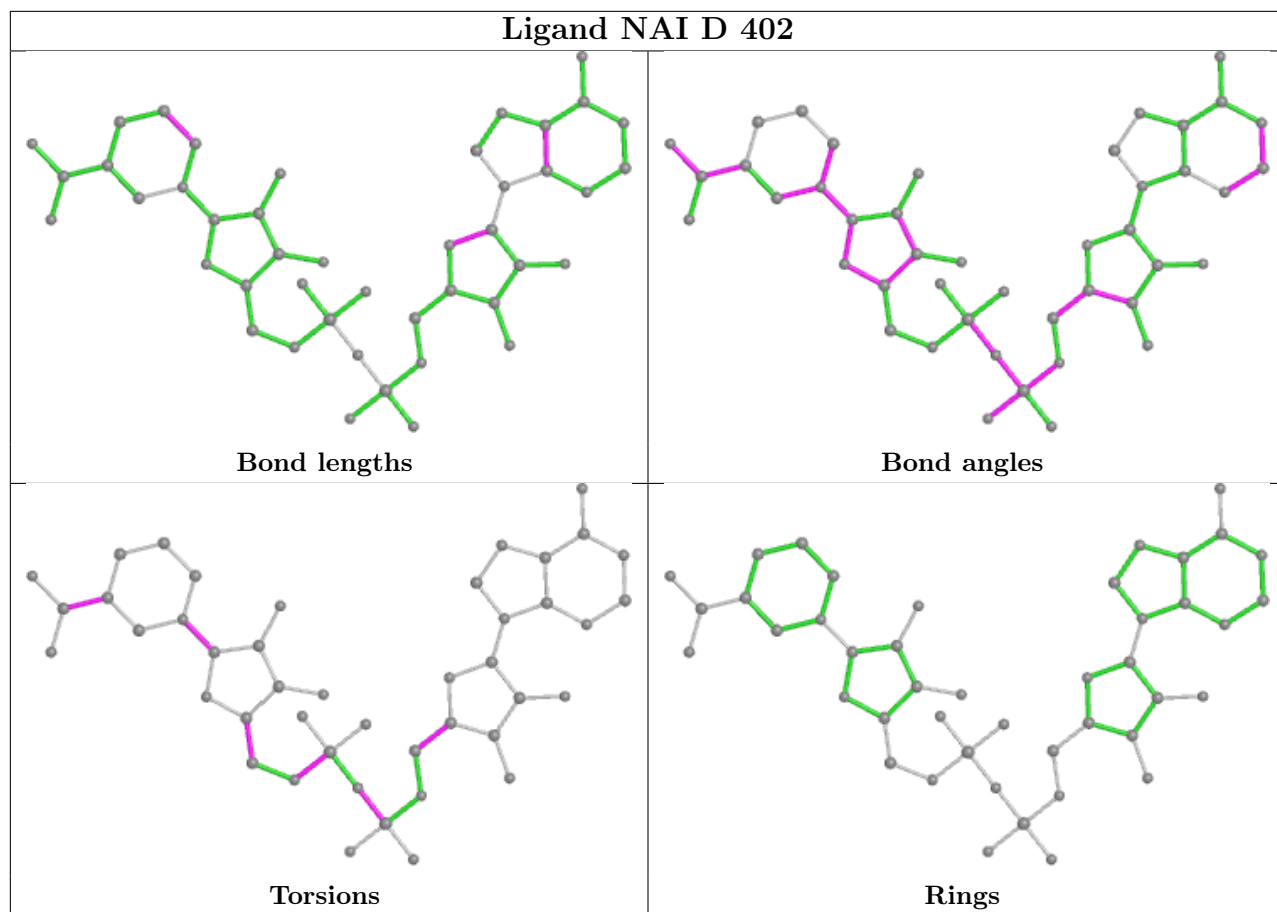


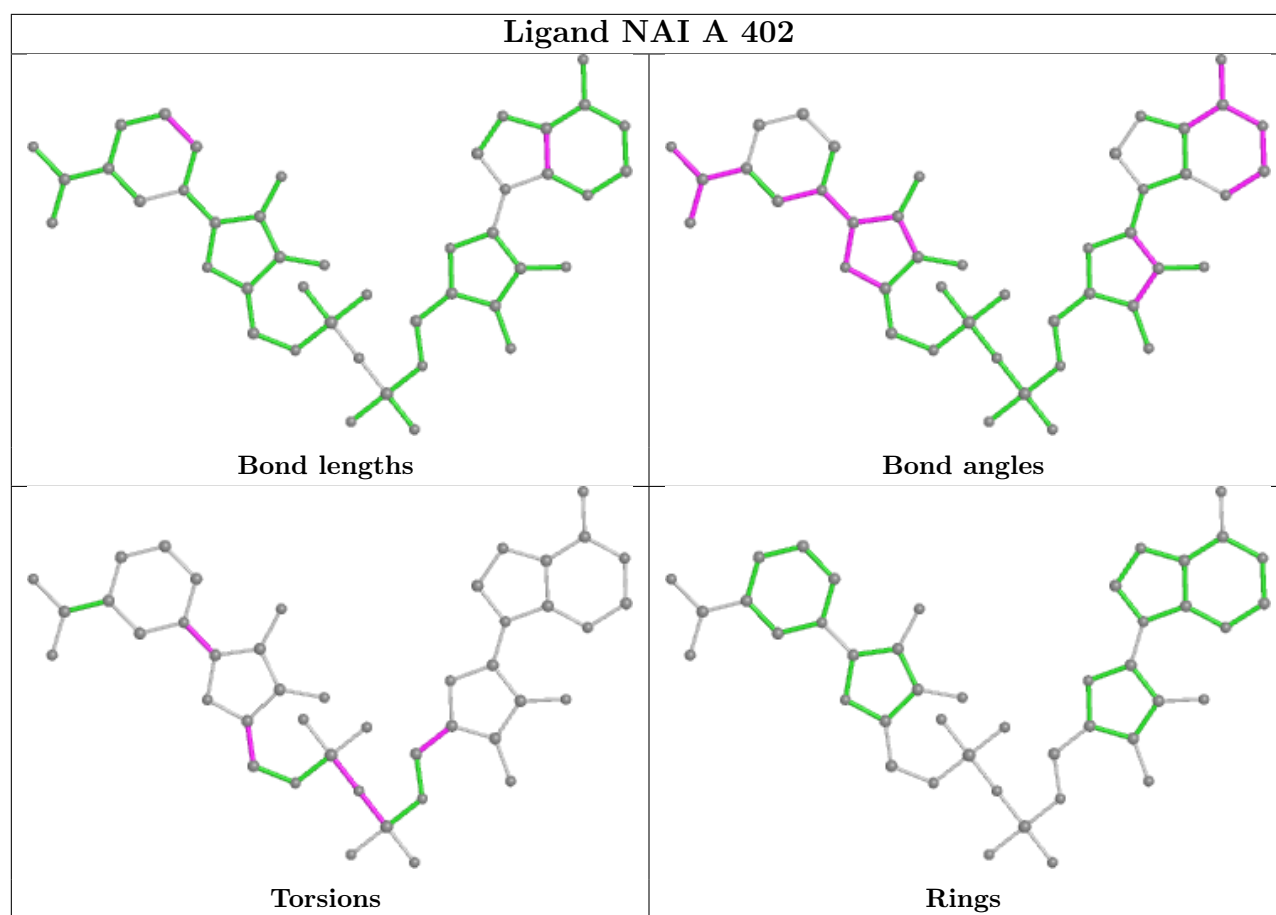












5.7 Other polymers [i](#)

There are no such residues in this entry.

5.8 Polymer linkage issues [i](#)

There are no chain breaks in this entry.

6 Fit of model and data

6.1 Protein, DNA and RNA chains

In the following table, the column labelled ‘#RSRZ > 2’ contains the number (and percentage) of RSRZ outliers, followed by percent RSRZ outliers for the chain as percentile scores relative to all X-ray entries and entries of similar resolution. The OWAB column contains the minimum, median, 95th percentile and maximum values of the occupancy-weighted average B-factor per residue. The column labelled ‘Q < 0.9’ lists the number of (and percentage) of residues with an average occupancy less than 0.9.

Mol	Chain	Analysed	<RSRZ>	#RSRZ>2	OWAB(Å ²)	Q<0.9
1	A	320/336 (95%)	-0.08	8 (2%) 57 56	16, 26, 59, 111	0
1	B	319/336 (94%)	-0.12	4 (1%) 77 76	16, 25, 58, 104	0
1	C	321/336 (95%)	0.04	15 (4%) 31 30	16, 30, 70, 114	0
1	D	328/336 (97%)	-0.07	4 (1%) 79 78	17, 29, 65, 88	0
All	All	1288/1344 (95%)	-0.06	31 (2%) 59 57	16, 27, 67, 114	0

All (31) RSRZ outliers are listed below:

Mol	Chain	Res	Type	RSRZ
1	A	328	GLN	5.8
1	A	89	HIS	4.7
1	C	192	PHE	3.8
1	C	45	ARG	3.7
1	C	262	ASP	3.6
1	C	269	VAL	3.1
1	A	51	LEU	3.1
1	B	89	HIS	3.1
1	C	89	HIS	3.1
1	A	90	GLY	3.0
1	D	226	LEU	2.9
1	D	261	ILE	2.9
1	C	220	PRO	2.8
1	B	224	ASP	2.8
1	C	221	GLY	2.8
1	A	327	LEU	2.7
1	C	90	GLY	2.7
1	B	223	ASP	2.6
1	B	327	LEU	2.5
1	D	136	GLN	2.4
1	D	193	GLU	2.3

Continued on next page...

Continued from previous page...

Mol	Chain	Res	Type	RSRZ
1	A	224	ASP	2.3
1	C	217	ARG	2.2
1	C	50	SER	2.2
1	C	92	ARG	2.2
1	C	3	VAL	2.2
1	A	99	GLU	2.1
1	C	270	PHE	2.1
1	C	272	LEU	2.1
1	A	92	ARG	2.0
1	C	198	THR	2.0

6.2 Non-standard residues in protein, DNA, RNA chains [i](#)

There are no non-standard protein/DNA/RNA residues in this entry.

6.3 Carbohydrates [i](#)

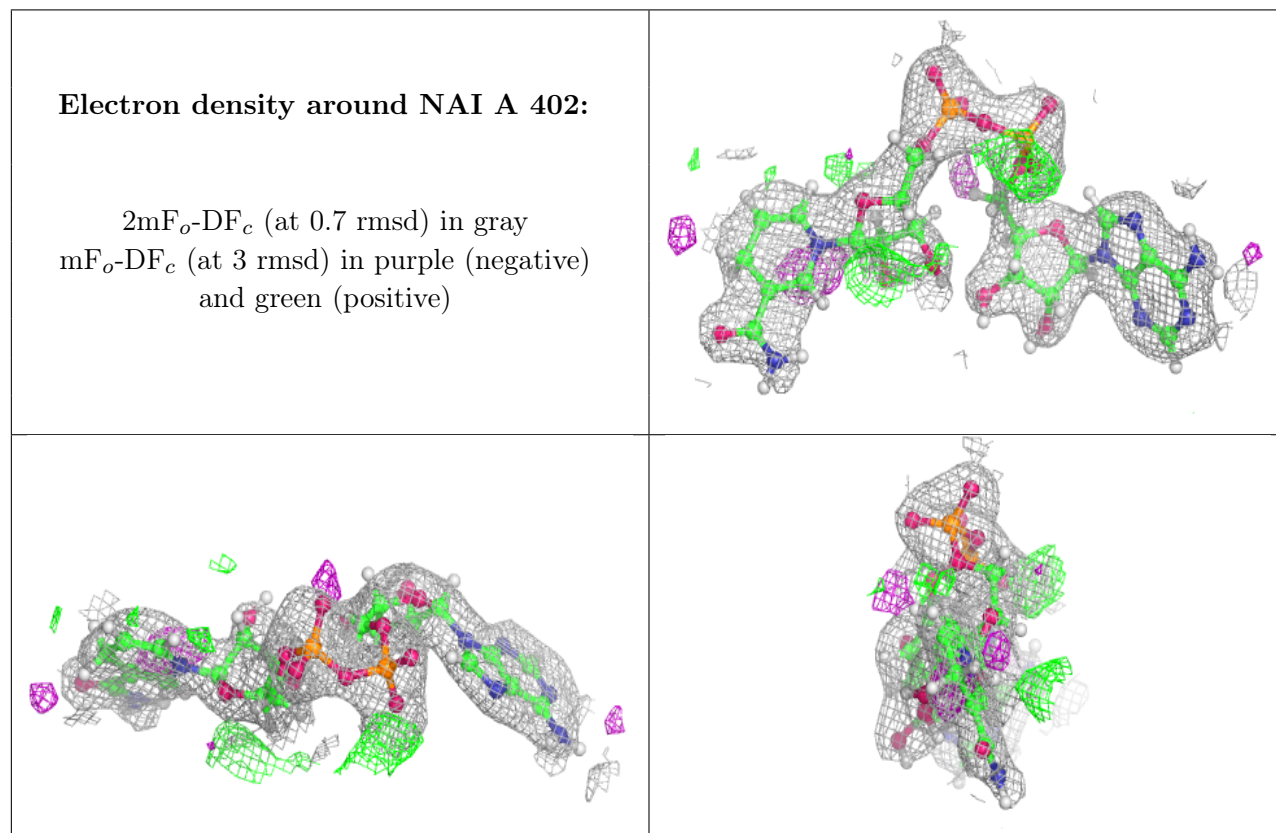
There are no monosaccharides in this entry.

6.4 Ligands [i](#)

In the following table, the Atoms column lists the number of modelled atoms in the group and the number defined in the chemical component dictionary. The B-factors column lists the minimum, median, 95th percentile and maximum values of B factors of atoms in the group. The column labelled 'Q< 0.9' lists the number of atoms with occupancy less than 0.9.

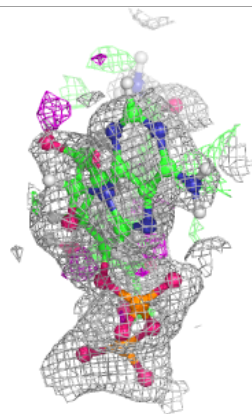
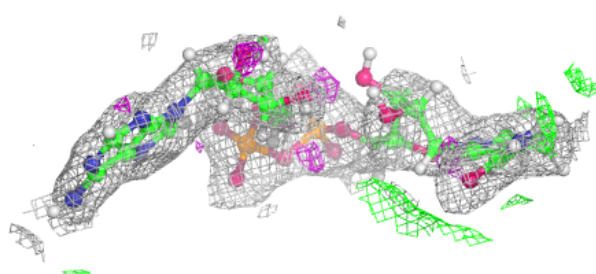
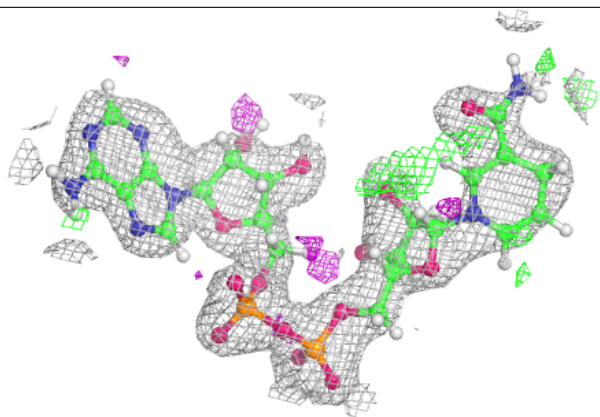
Mol	Type	Chain	Res	Atoms	RSCC	RSR	B-factors(Å ²)	Q<0.9
3	NAI	A	402	44/44	0.92	0.14	22,49,71,93	0
3	NAI	D	402	44/44	0.93	0.14	26,45,85,112	0
3	NAI	B	402	44/44	0.94	0.14	18,50,77,102	0
3	NAI	C	402	44/44	0.95	0.14	24,44,104,118	0
4	FMT	D	403	3/3	0.96	0.09	32,37,39,47	0
2	FAD	C	401	53/53	0.97	0.09	14,22,35,37	0
4	FMT	A	403	3/3	0.97	0.07	23,23,25,28	0
4	FMT	C	403	3/3	0.97	0.07	28,34,38,45	0
2	FAD	B	401	53/53	0.97	0.11	10,19,26,31	0
2	FAD	D	401	53/53	0.98	0.09	13,20,31,41	0
2	FAD	A	401	53/53	0.98	0.10	9,19,31,40	0
4	FMT	B	403	3/3	0.99	0.06	20,21,28,34	0

The following is a graphical depiction of the model fit to experimental electron density of all instances of the Ligand of Interest. In addition, ligands with molecular weight > 250 and outliers as shown on the geometry validation Tables will also be included. Each fit is shown from different orientation to approximate a three-dimensional view.

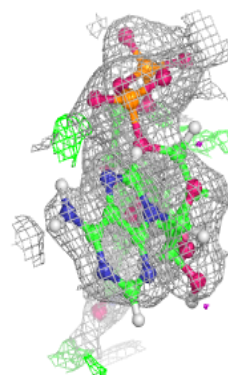
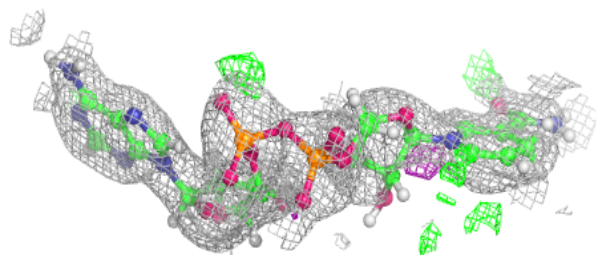
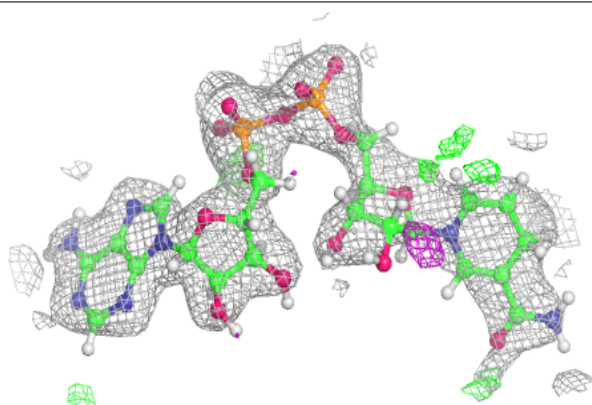


Electron density around NAI D 402:

$2mF_o-DF_c$ (at 0.7 rmsd) in gray
 mF_o-DF_c (at 3 rmsd) in purple (negative)
and green (positive)

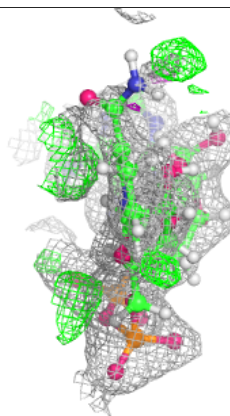
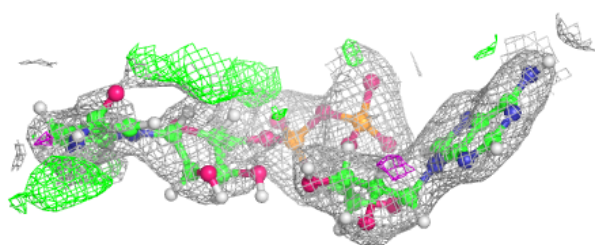
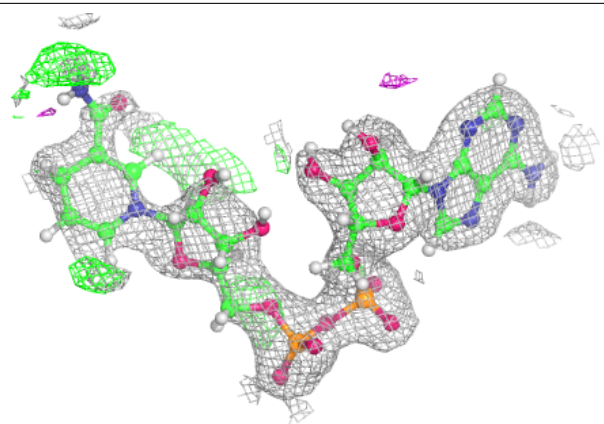
**Electron density around NAI B 402:**

$2mF_o-DF_c$ (at 0.7 rmsd) in gray
 mF_o-DF_c (at 3 rmsd) in purple (negative)
and green (positive)

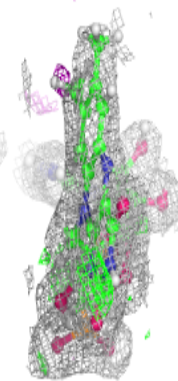
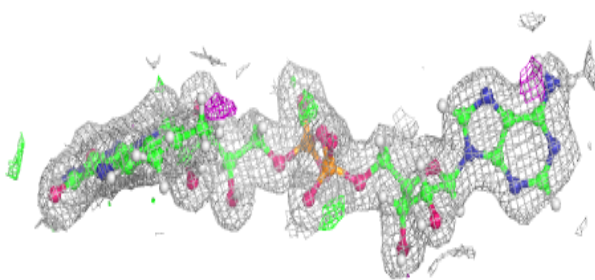
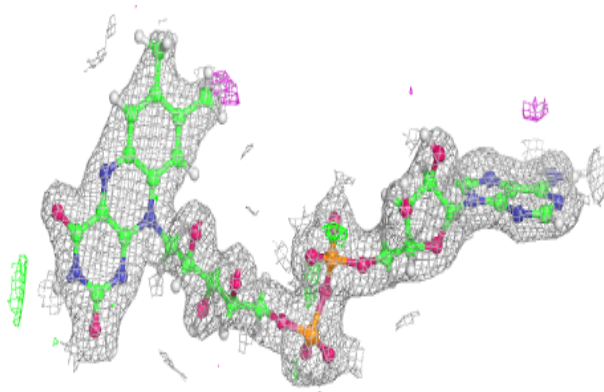


Electron density around NAI C 402:

$2mF_o-DF_c$ (at 0.7 rmsd) in gray
 mF_o-DF_c (at 3 rmsd) in purple (negative)
and green (positive)

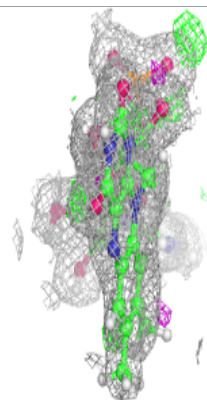
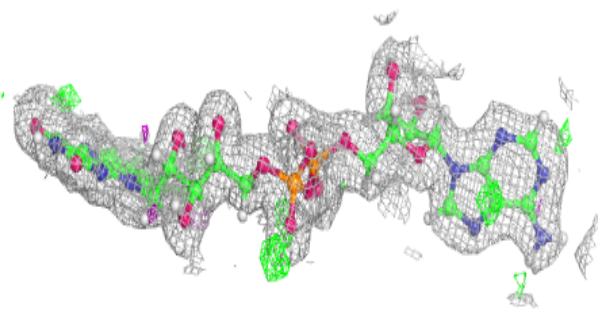
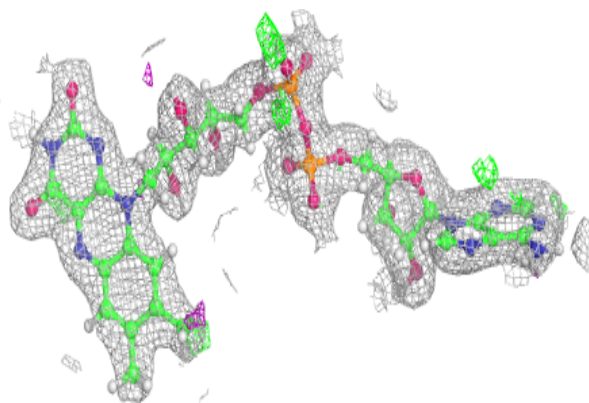
**Electron density around FAD C 401:**

$2mF_o-DF_c$ (at 0.7 rmsd) in gray
 mF_o-DF_c (at 3 rmsd) in purple (negative)
and green (positive)

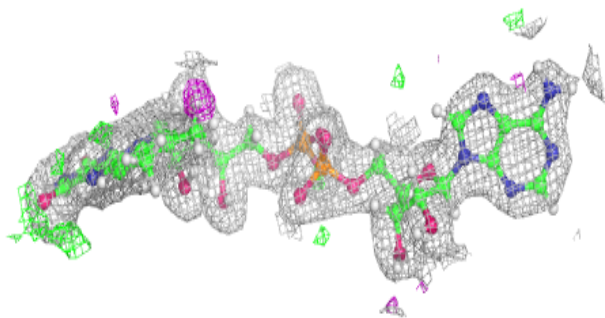
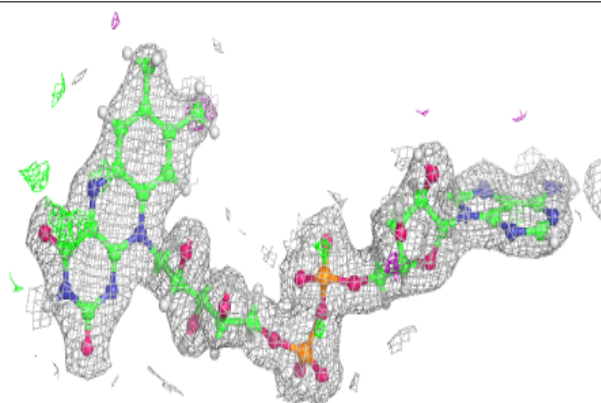


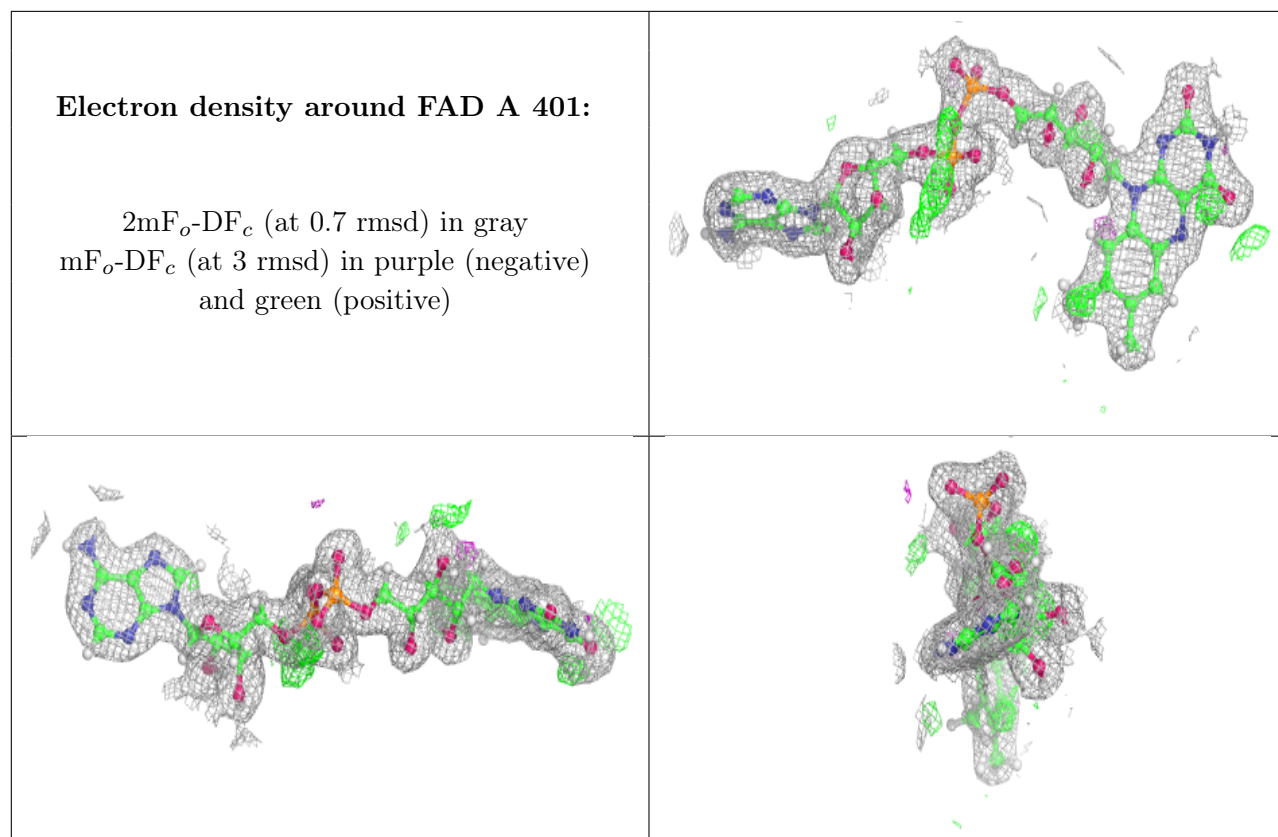
Electron density around FAD B 401:

$2mF_o-DF_c$ (at 0.7 rmsd) in gray
 mF_o-DF_c (at 3 rmsd) in purple (negative)
and green (positive)

**Electron density around FAD D 401:**

$2mF_o-DF_c$ (at 0.7 rmsd) in gray
 mF_o-DF_c (at 3 rmsd) in purple (negative)
and green (positive)





6.5 Other polymers [i](#)

There are no such residues in this entry.