



## Full wwPDB EM Validation Report ⓘ

Oct 7, 2024 – 02:20 PM JST

PDB ID : 8ZAO  
EMDB ID : EMD-39882  
Title : ExoKCR1 channelrhodopsin  
Authors : Zhang, M.F.  
Deposited on : 2024-04-25  
Resolution : 2.60 Å (reported)

This is a Full wwPDB EM Validation Report for a publicly released PDB entry.

We welcome your comments at [validation@mail.wwpdb.org](mailto:validation@mail.wwpdb.org)

A user guide is available at

<https://www.wwpdb.org/validation/2017/EMValidationReportHelp>

with specific help available everywhere you see the ⓘ symbol.

The types of validation reports are described at

<http://www.wwpdb.org/validation/2017/FAQs#types>.

---

The following versions of software and data (see [references ⓘ](#)) were used in the production of this report:

EMDB validation analysis : **FAILED**  
Mogul : 1.8.5 (274361), CSD as541be (2020)  
MolProbity : 4.02b-467  
buster-report : 1.1.7 (2018)  
Percentile statistics : 20231227.v01 (using entries in the PDB archive December 27th 2023)  
MapQ : **FAILED**  
Ideal geometry (proteins) : Engh & Huber (2001)  
Ideal geometry (DNA, RNA) : Parkinson et al. (1996)  
Validation Pipeline (wwPDB-VP) : 2.39

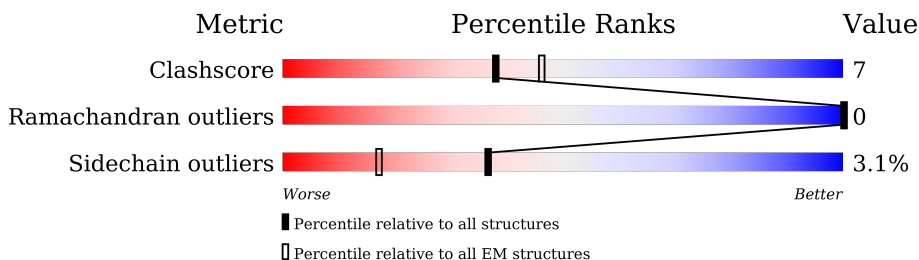
# 1 Overall quality at a glance

The following experimental techniques were used to determine the structure:

*ELECTRON MICROSCOPY*

The reported resolution of this entry is 2.60 Å.

Percentile scores (ranging between 0-100) for global validation metrics of the entry are shown in the following graphic. The table shows the number of entries on which the scores are based.



Metric	Whole archive (#Entries)	EM structures (#Entries)
Clashscore	210492	15764
Ramachandran outliers	207382	16835
Sidechain outliers	206894	16415

The table below summarises the geometric issues observed across the polymeric chains and their fit to the map. The red, orange, yellow and green segments of the bar indicate the fraction of residues that contain outliers for  $\geq 3$ , 2, 1 and 0 types of geometric quality criteria respectively. A grey segment represents the fraction of residues that are not modelled. The numeric value for each fraction is indicated below the corresponding segment, with a dot representing fractions  $\leq 5\%$

Mol	Chain	Length	Quality of chain	
1	A	259		
1	B	259		
1	C	259		

## 2 Entry composition

There are 4 unique types of molecules in this entry. The entry contains 6432 atoms, of which 0 are hydrogens and 0 are deuteriums.

In the tables below, the AltConf column contains the number of residues with at least one atom in alternate conformation and the Trace column contains the number of residues modelled with at most 2 atoms.

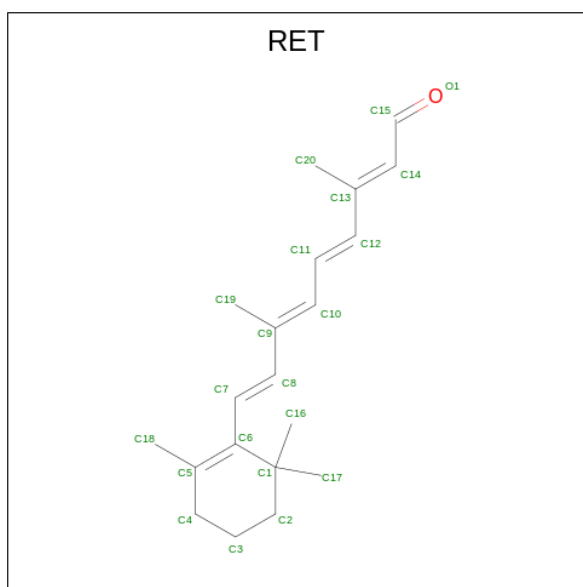
- Molecule 1 is a protein called exoKCR1.

Mol	Chain	Residues	Atoms					AltConf	Trace
			Total	C	N	O	S		
1	A	259	2109	1422	322	345	20	0	0
1	B	259	2109	1422	322	345	20	0	0
1	C	259	2109	1422	322	345	20	0	0

- Molecule 2 is POTASSIUM ION (three-letter code: K) (formula: K) (labeled as "Ligand of Interest" by depositor).

Mol	Chain	Residues	Atoms		AltConf
2	A	5	Total 5	K 5	0
2	B	5	Total 5	K 5	0
2	C	5	Total 5	K 5	0

- Molecule 3 is RETINAL (three-letter code: RET) (formula: C<sub>20</sub>H<sub>28</sub>O) (labeled as "Ligand of Interest" by depositor).



Mol	Chain	Residues	Atoms	AltConf
3	A	1	Total C 20 20	0
3	B	1	Total C 20 20	0
3	C	1	Total C 20 20	0


- Molecule 4 is water.

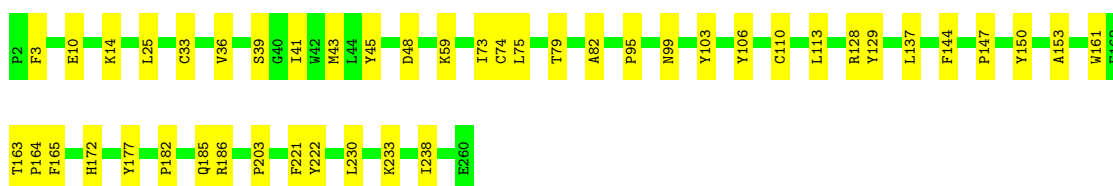
Mol	Chain	Residues	Atoms	AltConf
4	A	10	Total O 10 10	0
4	B	10	Total O 10 10	0
4	C	10	Total O 10 10	0

### 3 Residue-property plots [i](#)


These plots are drawn for all protein, RNA, DNA and oligosaccharide chains in the entry. The first graphic for a chain summarises the proportions of the various outlier classes displayed in the second graphic. The second graphic shows the sequence view annotated by issues in geometry. Residues are color-coded according to the number of geometric quality criteria for which they contain at least one outlier: green = 0, yellow = 1, orange = 2 and red = 3 or more. Stretches of 2 or more consecutive residues without any outlier are shown as a green connector. Residues present in the sample, but not in the model, are shown in grey.

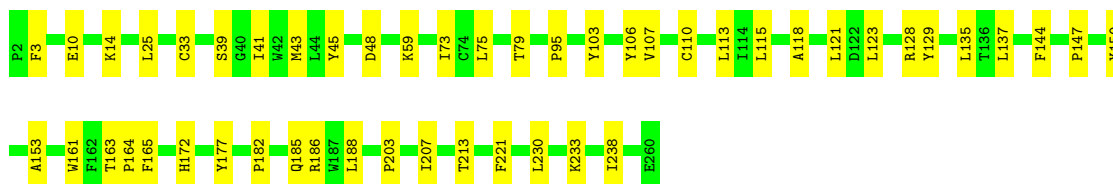
- Molecule 1: exoKCR1

Chain A:  83% 17%




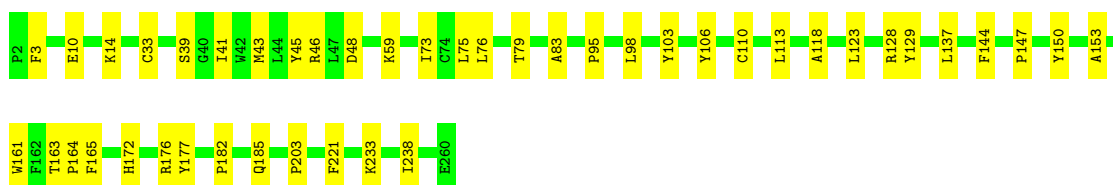
- Molecule 1: exoKCR1

Chain B:  81% 19%



- Molecule 1: exoKCR1

Chain C:  83% 17%



## 4 Experimental information

Property	Value	Source
EM reconstruction method	SINGLE PARTICLE	Depositor
Imposed symmetry	POINT, Not provided	
Number of particles used	24500	Depositor
Resolution determination method	FSC 0.143 CUT-OFF	Depositor
CTF correction method	NONE	Depositor
Microscope	FEI TITAN KRIOS	Depositor
Voltage (kV)	300	Depositor
Electron dose ( $e^-/\text{\AA}^2$ )	60	Depositor
Minimum defocus (nm)	1200	Depositor
Maximum defocus (nm)	2000	Depositor
Magnification	Not provided	
Image detector	FEI FALCON IV (4k x 4k)	Depositor

## 5 Model quality [i](#)

### 5.1 Standard geometry [i](#)

Bond lengths and bond angles in the following residue types are not validated in this section: RET, K

The Z score for a bond length (or angle) is the number of standard deviations the observed value is removed from the expected value. A bond length (or angle) with  $|Z| > 5$  is considered an outlier worth inspection. RMSZ is the root-mean-square of all Z scores of the bond lengths (or angles).

Mol	Chain	Bond lengths		Bond angles	
		RMSZ	# Z  >5	RMSZ	# Z  >5
1	A	0.27	0/2193	0.42	0/2989
1	B	0.27	0/2193	0.42	0/2989
1	C	0.27	0/2193	0.42	0/2989
All	All	0.27	0/6579	0.42	0/8967

There are no bond length outliers.

There are no bond angle outliers.

There are no chirality outliers.

There are no planarity outliers.

### 5.2 Too-close contacts [i](#)

In the following table, the Non-H and H(model) columns list the number of non-hydrogen atoms and hydrogen atoms in the chain respectively. The H(added) column lists the number of hydrogen atoms added and optimized by MolProbity. The Clashes column lists the number of clashes within the asymmetric unit, whereas Symm-Clashes lists symmetry-related clashes.

Mol	Chain	Non-H	H(model)	H(added)	Clashes	Symm-Clashes
1	A	2109	0	2048	29	0
1	B	2109	0	2048	32	0
1	C	2109	0	2048	28	0
2	A	5	0	0	2	0
2	B	5	0	0	1	0
2	C	5	0	0	1	0
3	A	20	0	27	1	0
3	B	20	0	27	1	0
3	C	20	0	27	1	0
4	A	10	0	0	2	0

*Continued on next page...*

*Continued from previous page...*

Mol	Chain	Non-H	H(model)	H(added)	Clashes	Symm-Clashes
4	B	10	0	0	1	0
4	C	10	0	0	1	0
All	All	6432	0	6225	80	0

The all-atom clashscore is defined as the number of clashes found per 1000 atoms (including hydrogen atoms). The all-atom clashscore for this structure is 7.

All (80) close contacts within the same asymmetric unit are listed below, sorted by their clash magnitude.

Atom-1	Atom-2	Interatomic distance (Å)	Clash overlap (Å)
2:B:302:K:K	4:B:407:HOH:O	1.60	1.09
2:A:302:K:K	4:A:407:HOH:O	1.61	1.08
2:C:302:K:K	4:C:407:HOH:O	1.60	1.08
1:B:161:TRP:HE1	1:C:79:THR:HG21	1.39	0.86
1:A:79:THR:HG21	1:C:161:TRP:HE1	1.40	0.84
1:A:161:TRP:HE1	1:B:79:THR:HG21	1.39	0.83
2:A:304:K:K	4:A:404:HOH:O	1.99	0.73
1:B:110:CYS:HB2	1:B:137:LEU:HD11	1.74	0.70
1:C:110:CYS:HB2	1:C:137:LEU:HD11	1.75	0.68
1:A:110:CYS:HB2	1:A:137:LEU:HD11	1.77	0.66
1:C:43:MET:HE2	1:C:238:ILE:HG13	1.81	0.62
1:B:10:GLU:OE2	1:B:10:GLU:N	2.27	0.62
1:C:10:GLU:OE2	1:C:10:GLU:N	2.25	0.61
1:A:43:MET:HE2	1:A:238:ILE:HG13	1.82	0.61
1:B:43:MET:HE2	1:B:238:ILE:HG13	1.83	0.60
1:B:135:LEU:HD21	1:C:76:LEU:HD12	1.82	0.60
1:B:129:TYR:OH	1:B:172:HIS:ND1	2.32	0.58
1:A:103:TYR:HE2	1:A:144:PHE:CE1	2.24	0.56
1:B:39:SER:O	1:B:43:MET:HG3	2.06	0.56
1:C:129:TYR:OH	1:C:172:HIS:ND1	2.32	0.56
1:B:103:TYR:HE2	1:B:144:PHE:CE1	2.24	0.55
1:C:103:TYR:HE2	1:C:144:PHE:CE1	2.24	0.55
1:B:203:PRO:HD3	3:B:306:RET:H7	1.88	0.55
1:C:39:SER:O	1:C:43:MET:HG3	2.07	0.55
1:A:203:PRO:HD3	3:A:306:RET:H7	1.89	0.54
1:A:39:SER:O	1:A:43:MET:HG3	2.07	0.54
1:C:203:PRO:HD3	3:C:306:RET:H7	1.88	0.54
1:A:129:TYR:OH	1:A:172:HIS:ND1	2.32	0.53
1:B:177:TYR:O	1:B:185:GLN:NE2	2.42	0.52
1:A:177:TYR:O	1:A:185:GLN:NE2	2.42	0.52
1:A:73:ILE:HG21	1:A:113:LEU:HD13	1.92	0.51

*Continued on next page...*



*Continued from previous page...*

Atom-1	Atom-2	Interatomic distance (Å)	Clash overlap (Å)
1:B:73:ILE:HG21	1:B:113:LEU:HD13	1.91	0.51
1:C:177:TYR:O	1:C:185:GLN:NE2	2.41	0.51
1:B:128:ARG:NH2	1:C:48:ASP:OD1	2.43	0.49
1:C:73:ILE:HG21	1:C:113:LEU:HD13	1.93	0.49
1:A:10:GLU:OE1	1:A:10:GLU:N	2.34	0.49
1:A:48:ASP:OD2	1:C:128:ARG:NH2	2.43	0.48
1:B:41:ILE:HG13	1:B:75:LEU:HD21	1.96	0.48
1:B:150:TYR:O	1:B:153:ALA:HB3	2.13	0.48
1:C:150:TYR:O	1:C:153:ALA:HB3	2.14	0.47
1:C:103:TYR:HD1	1:C:106:TYR:HD2	1.62	0.47
1:B:103:TYR:HD1	1:B:106:TYR:HD2	1.62	0.47
1:A:103:TYR:HD1	1:A:106:TYR:HD2	1.63	0.47
1:A:150:TYR:O	1:A:153:ALA:HB3	2.14	0.47
1:B:14:LYS:HE3	1:B:14:LYS:HB3	1.73	0.47
1:A:128:ARG:NH2	1:B:48:ASP:OD1	2.45	0.45
1:A:79:THR:CG2	1:C:161:TRP:HE1	2.21	0.45
1:A:147:PRO:HD3	1:B:95:PRO:HG2	1.99	0.45
1:C:182:PRO:HA	1:C:185:GLN:HB2	1.99	0.45
1:C:14:LYS:HB3	1:C:14:LYS:HE3	1.73	0.44
1:B:147:PRO:HD3	1:C:95:PRO:HG2	1.99	0.44
1:A:230:LEU:HD12	1:A:230:LEU:HA	1.87	0.44
1:A:186:ARG:HE	1:A:186:ARG:HB3	1.56	0.44
1:A:95:PRO:HG2	1:C:147:PRO:HD3	1.99	0.44
1:A:161:TRP:HE1	1:B:79:THR:CG2	2.22	0.43
1:A:182:PRO:HA	1:A:185:GLN:HB2	1.99	0.43
1:B:25:LEU:HD23	1:B:25:LEU:HA	1.91	0.43
1:B:182:PRO:HA	1:B:185:GLN:HB2	1.98	0.43
1:B:115:LEU:HD12	1:B:115:LEU:HA	1.90	0.43
1:A:41:ILE:HG13	1:A:75:LEU:HD21	2.00	0.43
1:B:186:ARG:HE	1:B:186:ARG:HB3	1.56	0.42
1:C:176:ARG:HA	1:C:176:ARG:HD2	1.82	0.42
1:A:99:ASN:O	1:A:222:TYR:OH	2.31	0.42
1:B:207:ILE:O	1:B:213:THR:HG23	2.19	0.42
1:B:121:LEU:HD21	1:B:188:LEU:HD11	2.02	0.42
1:B:161:TRP:HE1	1:C:79:THR:CG2	2.21	0.42
1:C:163:THR:HB	1:C:164:PRO:HD3	2.01	0.42
1:B:118:ALA:HA	1:B:123:LEU:HD12	2.02	0.42
1:A:33:CYS:SG	1:A:82:ALA:HB2	2.61	0.41
1:B:107:VAL:HG12	1:B:137:LEU:HB3	2.02	0.41
1:B:163:THR:HB	1:B:164:PRO:HD3	2.01	0.41
1:A:14:LYS:HE3	1:A:14:LYS:HB3	1.73	0.41

*Continued on next page...*

*Continued from previous page...*

Atom-1	Atom-2	Interatomic distance (Å)	Clash overlap (Å)
1:A:25:LEU:HD23	1:A:25:LEU:HA	1.92	0.41
1:A:163:THR:HB	1:A:164:PRO:HD3	2.01	0.41
1:B:135:LEU:HD23	1:B:135:LEU:HA	1.87	0.41
1:C:46:ARG:HD2	1:C:46:ARG:HA	1.86	0.41
1:C:41:ILE:HG13	1:C:75:LEU:HD21	2.02	0.40
1:A:36:VAL:HG12	1:A:74:CYS:O	2.22	0.40
1:C:83:ALA:HB3	1:C:98:LEU:HD12	2.04	0.40
1:C:118:ALA:HA	1:C:123:LEU:HD12	2.03	0.40

There are no symmetry-related clashes.

## 5.3 Torsion angles [i](#)

### 5.3.1 Protein backbone [i](#)

In the following table, the Percentiles column shows the percent Ramachandran outliers of the chain as a percentile score with respect to all PDB entries followed by that with respect to all EM entries.

The Analysed column shows the number of residues for which the backbone conformation was analysed, and the total number of residues.

Mol	Chain	Analysed	Favoured	Allowed	Outliers	Percentiles	
1	A	257/259 (99%)	254 (99%)	3 (1%)	0	100	100
1	B	257/259 (99%)	254 (99%)	3 (1%)	0	100	100
1	C	257/259 (99%)	254 (99%)	3 (1%)	0	100	100
All	All	771/777 (99%)	762 (99%)	9 (1%)	0	100	100

There are no Ramachandran outliers to report.

### 5.3.2 Protein sidechains [i](#)

In the following table, the Percentiles column shows the percent sidechain outliers of the chain as a percentile score with respect to all PDB entries followed by that with respect to all EM entries.

The Analysed column shows the number of residues for which the sidechain conformation was analysed, and the total number of residues.

Mol	Chain	Analysed	Rotameric	Outliers	Percentiles	
1	A	223/223 (100%)	217 (97%)	6 (3%)	40	66
1	B	223/223 (100%)	215 (96%)	8 (4%)	30	56
1	C	223/223 (100%)	216 (97%)	7 (3%)	35	62
All	All	669/669 (100%)	648 (97%)	21 (3%)	37	62

All (21) residues with a non-rotameric sidechain are listed below:

Mol	Chain	Res	Type
1	A	3	PHE
1	A	45	TYR
1	A	59	LYS
1	A	165	PHE
1	A	221	PHE
1	A	233	LYS
1	B	3	PHE
1	B	33	CYS
1	B	45	TYR
1	B	59	LYS
1	B	165	PHE
1	B	221	PHE
1	B	230	LEU
1	B	233	LYS
1	C	3	PHE
1	C	33	CYS
1	C	45	TYR
1	C	59	LYS
1	C	165	PHE
1	C	221	PHE
1	C	233	LYS

Sometimes sidechains can be flipped to improve hydrogen bonding and reduce clashes. There are no such sidechains identified.

### 5.3.3 RNA [i](#)

There are no RNA molecules in this entry.

## 5.4 Non-standard residues in protein, DNA, RNA chains [i](#)

There are no non-standard protein/DNA/RNA residues in this entry.

## 5.5 Carbohydrates [i](#)

There are no oligosaccharides in this entry.

## 5.6 Ligand geometry [i](#)

Of 18 ligands modelled in this entry, 15 are monoatomic - leaving 3 for Mogul analysis.

In the following table, the Counts columns list the number of bonds (or angles) for which Mogul statistics could be retrieved, the number of bonds (or angles) that are observed in the model and the number of bonds (or angles) that are defined in the Chemical Component Dictionary. The Link column lists molecule types, if any, to which the group is linked. The Z score for a bond length (or angle) is the number of standard deviations the observed value is removed from the expected value. A bond length (or angle) with  $|Z| > 2$  is considered an outlier worth inspection. RMSZ is the root-mean-square of all Z scores of the bond lengths (or angles).

Mol	Type	Chain	Res	Link	Bond lengths			Bond angles		
					Counts	RMSZ	# Z  > 2	Counts	RMSZ	# Z  > 2
3	RET	A	306	1	20,20,21	0.85	1 (5%)	27,27,28	1.04	2 (7%)
3	RET	C	306	1	20,20,21	0.86	1 (5%)	27,27,28	1.04	2 (7%)
3	RET	B	306	1	20,20,21	0.85	1 (5%)	27,27,28	1.03	2 (7%)

In the following table, the Chirals column lists the number of chiral outliers, the number of chiral centers analysed, the number of these observed in the model and the number defined in the Chemical Component Dictionary. Similar counts are reported in the Torsion and Rings columns. '-' means no outliers of that kind were identified.

Mol	Type	Chain	Res	Link	Chirals	Torsions	Rings
3	RET	A	306	1	-	4/13/30/31	0/1/1/1
3	RET	C	306	1	-	4/13/30/31	0/1/1/1
3	RET	B	306	1	-	4/13/30/31	0/1/1/1

All (3) bond length outliers are listed below:

Mol	Chain	Res	Type	Atoms	Z	Observed(Å)	Ideal(Å)
3	C	306	RET	C14-C13	3.28	1.36	1.33
3	B	306	RET	C14-C13	3.23	1.36	1.33
3	A	306	RET	C14-C13	3.21	1.36	1.33

All (6) bond angle outliers are listed below:

Mol	Chain	Res	Type	Atoms	Z	Observed(°)	Ideal(°)
3	C	306	RET	C18-C5-C6	-2.37	121.87	124.53

*Continued on next page...*

*Continued from previous page...*

Mol	Chain	Res	Type	Atoms	Z	Observed(°)	Ideal(°)
3	A	306	RET	C18-C5-C6	-2.36	121.88	124.53
3	B	306	RET	C18-C5-C6	-2.36	121.88	124.53
3	C	306	RET	C7-C6-C5	-2.24	116.04	121.46
3	B	306	RET	C7-C6-C5	-2.22	116.07	121.46
3	A	306	RET	C7-C6-C5	-2.22	116.08	121.46

There are no chirality outliers.

All (12) torsion outliers are listed below:

Mol	Chain	Res	Type	Atoms
3	A	306	RET	C5-C6-C7-C8
3	A	306	RET	C7-C8-C9-C10
3	A	306	RET	C7-C8-C9-C19
3	B	306	RET	C5-C6-C7-C8
3	B	306	RET	C7-C8-C9-C10
3	B	306	RET	C7-C8-C9-C19
3	C	306	RET	C5-C6-C7-C8
3	C	306	RET	C7-C8-C9-C10
3	C	306	RET	C7-C8-C9-C19
3	A	306	RET	C1-C6-C7-C8
3	B	306	RET	C1-C6-C7-C8
3	C	306	RET	C1-C6-C7-C8

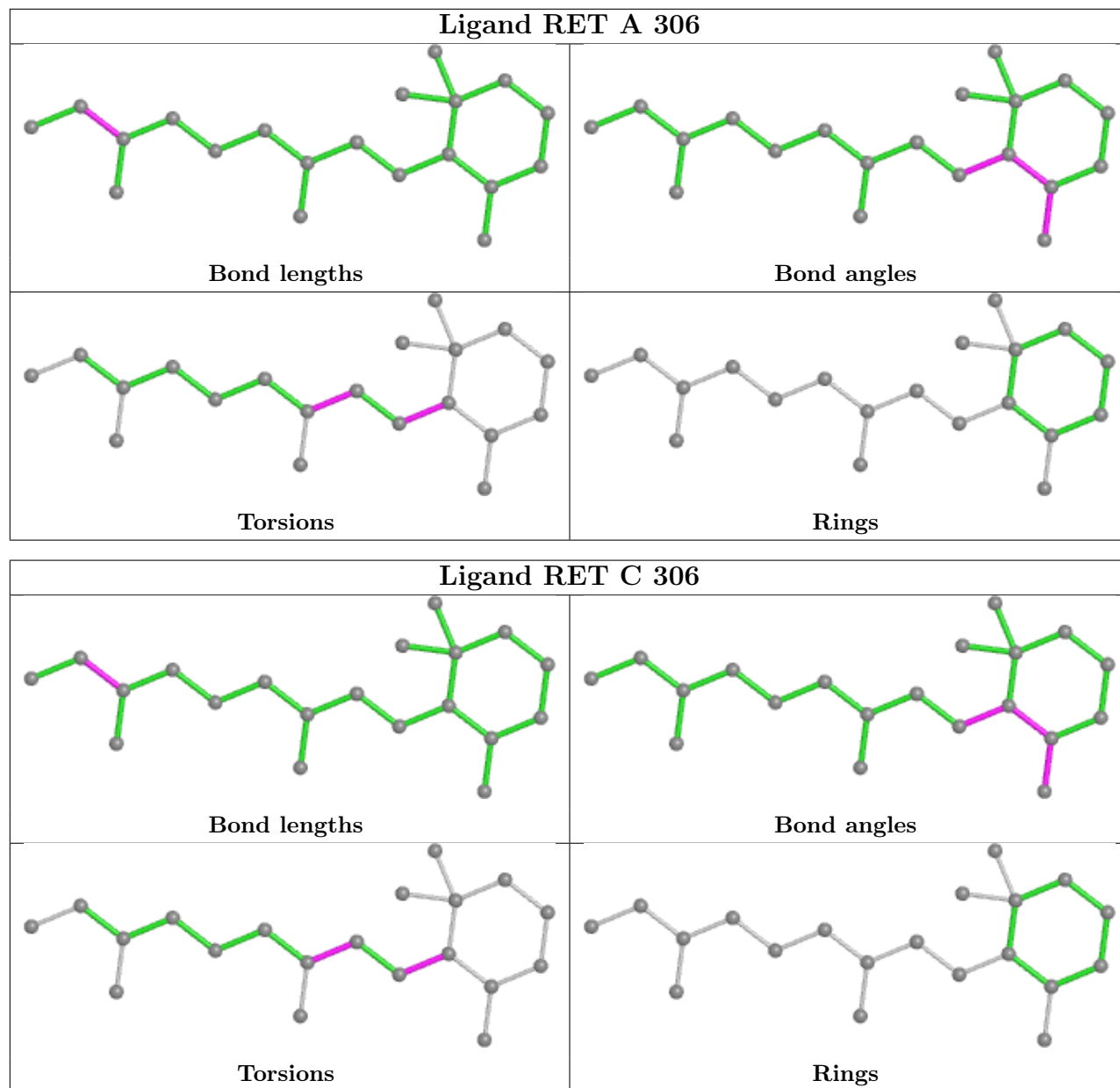
There are no ring outliers.

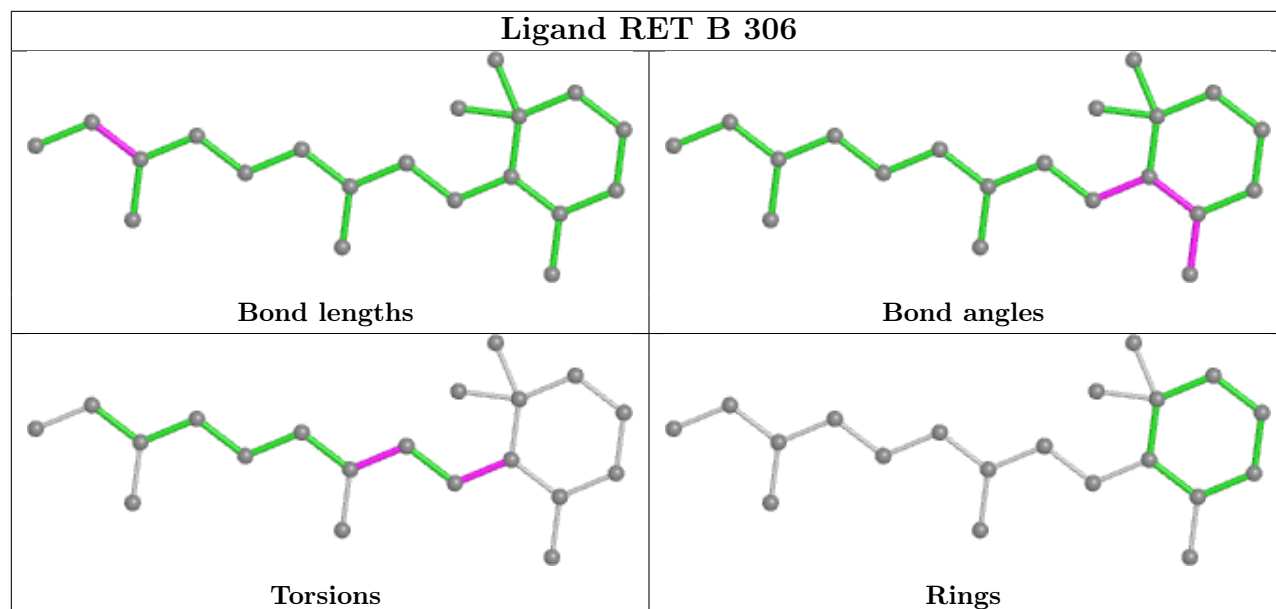
3 monomers are involved in 3 short contacts:

Mol	Chain	Res	Type	Clashes	Symm-Clashes
3	A	306	RET	1	0
3	C	306	RET	1	0
3	B	306	RET	1	0

The following is a two-dimensional graphical depiction of Mogul quality analysis of bond lengths, bond angles, torsion angles, and ring geometry for all instances of the Ligand of Interest. In addition, ligands with molecular weight > 250 and outliers as shown on the validation Tables will also be included. For torsion angles, if less than 5% of the Mogul distribution of torsion angles is within 10 degrees of the torsion angle in question, then that torsion angle is considered an outlier. Any bond that is central to one or more torsion angles identified as an outlier by Mogul will be highlighted in the graph. For rings, the root-mean-square deviation (RMSD) between the ring in question and similar rings identified by Mogul is calculated over all ring torsion angles. If the average RMSD is greater than 60 degrees and the minimal RMSD between the ring in question and any Mogul-identified rings is also greater than 60 degrees, then that ring is considered an outlier. The outliers are highlighted in purple. The color gray indicates Mogul did not find sufficient

equivalents in the CSD to analyse the geometry.





## 5.7 Other polymers [i](#)

There are no such residues in this entry.

## 5.8 Polymer linkage issues [i](#)

There are no chain breaks in this entry.