



Full wwPDB X-ray Structure Validation Report ⓘ

May 7, 2026 – 04:15 PM EDT

PDB ID : 9YKR / pdb_00009ykr
Title : Crystal structure of the GLP (EHMT1) SET domain in complex with SAM and TNG917
Authors : Whittington, D.A.
Deposited on : 2025-10-07
Resolution : 1.38 Å(reported)

This is a Full wwPDB X-ray Structure Validation Report for a publicly released PDB entry.

We welcome your comments at validation@mail.wwpdb.org

A user guide is available at

<https://www.wwpdb.org/validation/2017/XrayValidationReportHelp>

with specific help available everywhere you see the ⓘ symbol.

The types of validation reports are described at

<http://www.wwpdb.org/validation/2017/FAQs#types>.

The following versions of software and data (see [references ⓘ](#)) were used in the production of this report:

MolProbity	:	4-5-2 with Phenix2.0
Mogul	:	2022.3.0, CSD as543be (2022)
Xtriage (Phenix)	:	2.0
EDS	:	3.0
Buster-report	:	wwPDB partial adaption of 1.1.7 (2018)
Percentile statistics	:	20250101.v01 (using entries in the PDB archive January 1st 2025)
CCP4	:	9.0.010 (Gargrove)
Density-Fitness	:	1.0.12
Ideal geometry (proteins)	:	Engh & Huber (2001)
Ideal geometry (DNA, RNA)	:	Parkinson et al. (1996)
Validation Pipeline (wwPDB-VP)	:	2.49

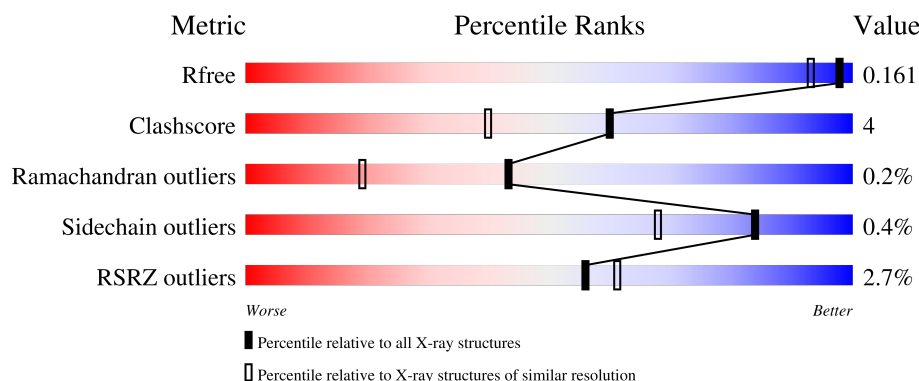
1 Overall quality at a glance

The following experimental techniques were used to determine the structure:

X-RAY DIFFRACTION

The reported resolution of this entry is 1.38 Å.

Percentile scores (ranging between 0-100) for global validation metrics of the entry are shown in the following graphic. The table shows the number of entries on which the scores are based.



Metric	Whole archive (#Entries)	Similar resolution (#Entries, resolution range(Å))
R_{free}	180053	4403 (1.40-1.36)
Clashscore	190562	4528 (1.40-1.36)
Ramachandran outliers	187476	4459 (1.40-1.36)
Sidechain outliers	187428	4458 (1.40-1.36)
RSRZ outliers	180081	4399 (1.40-1.36)

The table below summarises the geometric issues observed across the polymeric chains and their fit to the electron density. The red, orange, yellow and green segments of the lower bar indicate the fraction of residues that contain outliers for ≥ 3 , 2, 1 and 0 types of geometric quality criteria respectively. A grey segment represents the fraction of residues that are not modelled. The numeric value for each fraction is indicated below the corresponding segment, with a dot representing fractions $\leq 5\%$. The upper red bar (where present) indicates the fraction of residues that have poor fit to the electron density. The numeric value is given above the bar.

Mol	Chain	Length	Quality of chain
1	A	262	
1	B	262	

The following table lists non-polymeric compounds, carbohydrate monomers and non-standard residues in protein, DNA, RNA chains that are outliers for geometric or electron-density-fit criteria:

Mol	Type	Chain	Res	Chirality	Geometry	Clashes	Electron density
7	EDO	A	1323	-	-	X	-
7	EDO	B	1325	-	-	X	-

2 Entry composition

There are 8 unique types of molecules in this entry. The entry contains 5886 atoms, of which 0 are hydrogens and 0 are deuteriums.

In the tables below, the ZeroOcc column contains the number of atoms modelled with zero occupancy, the AltConf column contains the number of residues with at least one atom in alternate conformation and the Trace column contains the number of residues modelled with at most 2 atoms.

- Molecule 1 is a protein called Histone-lysine N-methyltransferase EHMT1.

Mol	Chain	Residues	Atoms					ZeroOcc	AltConf	Trace
1	A	262	Total	C	N	O	S	0	26	0
			2336	1445	427	435	29			
1	B	259	Total	C	N	O	S	0	30	0
			2362	1457	447	430	28			

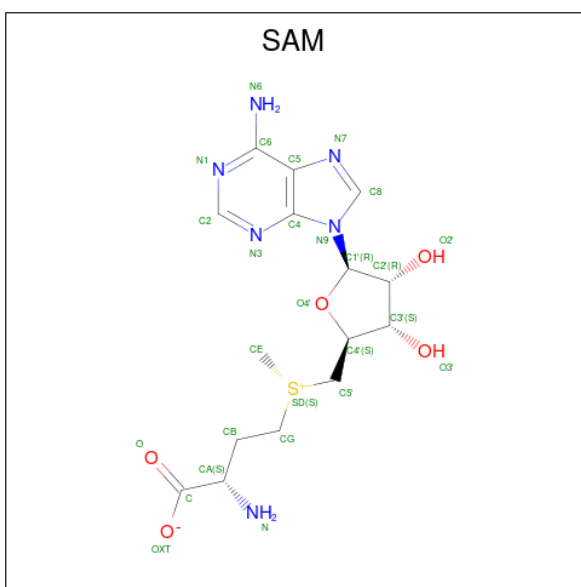
There are 2 discrepancies between the modelled and reference sequences:

Chain	Residue	Modelled	Actual	Comment	Reference
A	1005	GLY	-	expression tag	UNP Q9H9B1
B	1005	GLY	-	expression tag	UNP Q9H9B1

- Molecule 2 is ZINC ION (CCD ID: ZN) (formula: Zn).

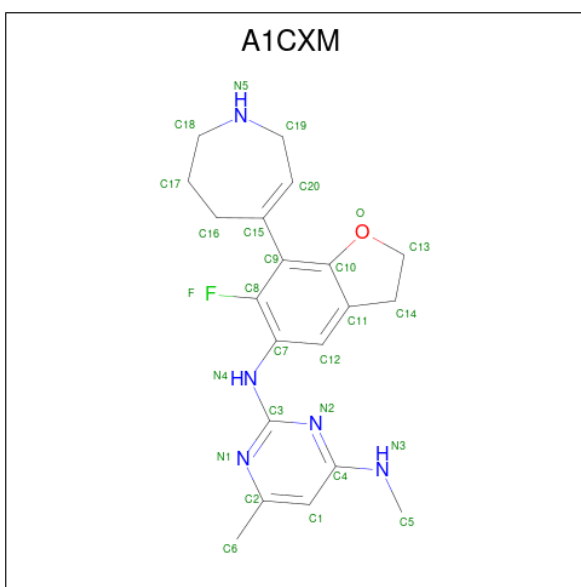
Mol	Chain	Residues	Atoms		ZeroOcc	AltConf
2	A	4	Total	Zn	0	0
			4	4		
2	B	4	Total	Zn	0	0
			4	4		

- Molecule 3 is S-ADENOSYLMETHIONINE (CCD ID: SAM) (formula: C₁₅H₂₂N₆O₅S).



Mol	Chain	Residues	Atoms					ZeroOcc	AltConf
3	A	1	Total	C	N	O	S	0	0
			27	15	6	5	1		
3	B	1	Total	C	N	O	S	0	0
			27	15	6	5	1		

- Molecule 4 is N 2 -[(7M)-6-fluoro-7-(2,5,6,7-tetrahydro-1H-azepin-4-yl)-2,3-dihydro-1-benzofuran-5-yl]-N 4 ,6-dimethylpyrimidine-2,4-diamine (CCD ID: A1CXM) (formula: C₂₀H₂₄FN₅O) (labeled as "Ligand of Interest" by depositor).



Mol	Chain	Residues	Atoms					ZeroOcc	AltConf
4	A	1	Total	C	F	N	O	0	0
			27	20	1	5	1		

Continued on next page...

Continued from previous page...

Mol	Chain	Residues	Atoms					ZeroOcc	AltConf
4	B	1	Total	C	F	N	O	0	0
			27	20	1	5	1		

- Molecule 5 is DI(HYDROXYETHYL)ETHER (CCD ID: PEG) (formula: $C_4H_{10}O_3$).



Mol	Chain	Residues	Atoms			ZeroOcc	AltConf
5	A	1	Total	C	O	0	0
			7	4	3		
5	B	1	Total	C	O	0	0
			7	4	3		
5	B	1	Total	C	O	0	0
			7	4	3		
5	B	1	Total	C	O	0	0
			7	4	3		

- Molecule 6 is SULFATE ION (CCD ID: SO4) (formula: O_4S).



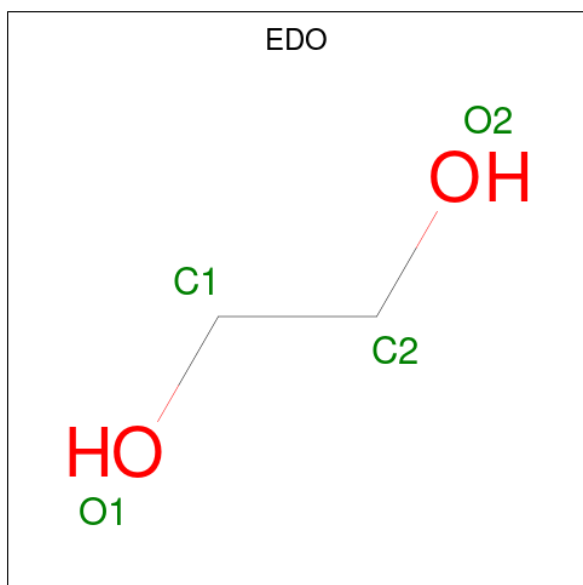
Mol	Chain	Residues	Atoms			ZeroOcc	AltConf
6	A	1	Total	O	S	0	0
			5	4	1		
6	A	1	Total	O	S	0	0
			5	4	1		
6	A	1	Total	O	S	0	1
			5	4	1		
6	A	1	Total	O	S	0	0
			5	4	1		
6	A	1	Total	O	S	0	0
			5	4	1		
6	A	1	Total	O	S	0	0
			5	4	1		
6	A	1	Total	O	S	0	1
			5	4	1		
6	B	1	Total	O	S	0	0
			5	4	1		
6	B	1	Total	O	S	0	0
			5	4	1		
6	B	1	Total	O	S	0	0
			5	4	1		
6	B	1	Total	O	S	0	0
			5	4	1		

Continued on next page...

Continued from previous page...

Mol	Chain	Residues	Atoms			ZeroOcc	AltConf
6	B	1	Total	O	S	0	0
			5	4	1		
6	B	1	Total	O	S	0	0
			5	4	1		

- Molecule 7 is 1,2-ETHANEDIOL (CCD ID: EDO) (formula: C₂H₆O₂).



Mol	Chain	Residues	Atoms			ZeroOcc	AltConf
7	A	1	Total	C	O	0	0
			4	2	2		
7	A	1	Total	C	O	0	0
			4	2	2		
7	A	1	Total	C	O	0	0
			4	2	2		
7	A	1	Total	C	O	0	0
			4	2	2		
7	A	1	Total	C	O	0	0
			4	2	2		
7	A	1	Total	C	O	0	0
			4	2	2		
7	A	1	Total	C	O	0	0
			4	2	2		

Continued on next page...

Continued from previous page...

Mol	Chain	Residues	Atoms	ZeroOcc	AltConf
7	A	1	Total C O 4 2 2	0	0
7	A	1	Total C O 4 2 2	0	0
7	B	1	Total C O 4 2 2	0	0
7	B	1	Total C O 4 2 2	0	0
7	B	1	Total C O 4 2 2	0	0
7	B	1	Total C O 4 2 2	0	0
7	B	1	Total C O 4 2 2	0	0
7	B	1	Total C O 4 2 2	0	0
7	B	1	Total C O 4 2 2	0	0
7	B	1	Total C O 4 2 2	0	0
7	B	1	Total C O 4 2 2	0	0
7	B	1	Total C O 4 2 2	0	0

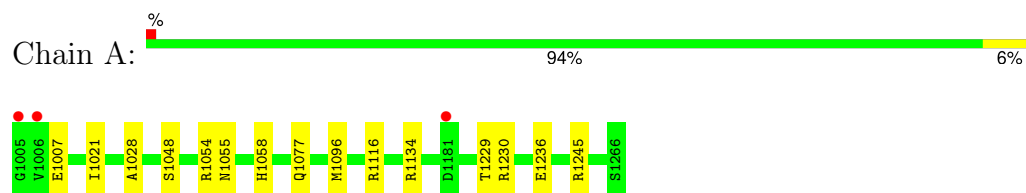
- Molecule 8 is water.

Mol	Chain	Residues	Atoms	ZeroOcc	AltConf
8	A	445	Total O 450 450	0	15
8	B	429	Total O 430 430	0	4

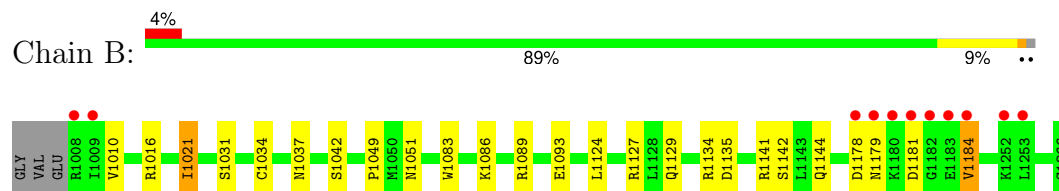
3 Residue-property plots [i](#)

These plots are drawn for all protein, RNA, DNA and oligosaccharide chains in the entry. The first graphic for a chain summarises the proportions of the various outlier classes displayed in the second graphic. The second graphic shows the sequence view annotated by issues in geometry and electron density. Residues are color-coded according to the number of geometric quality criteria for which they contain at least one outlier: green = 0, yellow = 1, orange = 2 and red = 3 or more. A red dot above a residue indicates a poor fit to the electron density ($RSRZ > 2$). Stretches of 2 or more consecutive residues without any outlier are shown as a green connector. Residues present in the sample, but not in the model, are shown in grey.

- Molecule 1: Histone-lysine N-methyltransferase EHMT1



- Molecule 1: Histone-lysine N-methyltransferase EHMT1



4 Data and refinement statistics

Property	Value	Source
Space group	P 21 21 21	Depositor
Cell constants a, b, c, α , β , γ	74.25Å 81.72Å 93.28Å 90.00° 90.00° 90.00°	Depositor
Resolution (Å)	47.35 – 1.38 47.35 – 1.38	Depositor EDS
% Data completeness (in resolution range)	99.5 (47.35-1.38) 99.5 (47.35-1.38)	Depositor EDS
R_{merge}	0.11	Depositor
R_{sym}	(Not available)	Depositor
$\langle I/\sigma(I) \rangle$ ¹	2.96 (at 1.38Å)	Xtriage
Refinement program	PHENIX 1.20.1_4487, REFMAC 5.8.0267	Depositor
R, R_{free}	0.121 , 0.154 0.135 , 0.161	Depositor DCC
R_{free} test set	5732 reflections (4.90%)	wwPDB-VP
Wilson B-factor (Å ²)	11.4	Xtriage
Anisotropy	0.316	Xtriage
Bulk solvent k_{sol} (e/Å ³), B_{sol} (Å ²)	0.35 , 48.4	EDS
L-test for twinning ²	$\langle L \rangle = 0.50$, $\langle L^2 \rangle = 0.33$	Xtriage
Estimated twinning fraction	No twinning to report.	Xtriage
F_o, F_c correlation	0.98	EDS
Total number of atoms	5886	wwPDB-VP
Average B, all atoms (Å ²)	18.0	wwPDB-VP

Xtriage's analysis on translational NCS is as follows: *The largest off-origin peak in the Patterson function is 6.22% of the height of the origin peak. No significant pseudotranslation is detected.*

¹Intensities estimated from amplitudes.

²Theoretical values of $\langle |L| \rangle$, $\langle L^2 \rangle$ for acentric reflections are 0.5, 0.333 respectively for untwinned datasets, and 0.375, 0.2 for perfectly twinned datasets.

5 Model quality [i](#)

5.1 Standard geometry [i](#)

Bond lengths and bond angles in the following residue types are not validated in this section: SO4, SAM, A1CXM, ZN, PEG, EDO

The Z score for a bond length (or angle) is the number of standard deviations the observed value is removed from the expected value. A bond length (or angle) with $|Z| > 5$ is considered an outlier worth inspection. RMSZ is the root-mean-square of all Z scores of the bond lengths (or angles).

Mol	Chain	Bond lengths		Bond angles	
		RMSZ	$\# Z > 5$	RMSZ	$\# Z > 5$
1	A	0.22	0/2387	0.47	0/3222
1	B	0.21	0/2413	0.46	0/3251
All	All	0.21	0/4800	0.46	0/6473

There are no bond length outliers.

There are no bond angle outliers.

There are no chirality outliers.

There are no planarity outliers.

5.2 Too-close contacts [i](#)

In the following table, the Non-H and H(model) columns list the number of non-hydrogen atoms and hydrogen atoms in the chain respectively. The H(added) column lists the number of hydrogen atoms added and optimized by MolProbity. The Clashes column lists the number of clashes within the asymmetric unit, whereas Symm-Clashes lists symmetry-related clashes.

Mol	Chain	Non-H	H(model)	H(added)	Clashes	Symm-Clashes
1	A	2336	0	2210	15	0
1	B	2362	0	2246	21	0
2	A	4	0	0	0	0
2	B	4	0	0	0	0
3	A	27	0	22	0	0
3	B	27	0	22	0	0
4	A	27	0	0	0	0
4	B	27	0	0	0	0
5	A	7	0	10	0	0
5	B	21	0	30	2	0
6	A	45	0	0	0	0

Continued on next page...

Continued from previous page...

Mol	Chain	Non-H	H(model)	H(added)	Clashes	Symm-Clashes
6	B	35	0	0	1	0
7	A	44	0	66	6	0
7	B	40	0	60	12	0
8	A	450	0	0	4	1
8	B	430	0	0	7	1
All	All	5886	0	4666	42	1

The all-atom clashscore is defined as the number of clashes found per 1000 atoms (including hydrogen atoms). The all-atom clashscore for this structure is 4.

All (42) close contacts within the same asymmetric unit are listed below, sorted by their clash magnitude.

Atom-1	Atom-2	Interatomic distance (Å)	Clash overlap (Å)
7:A:1323:EDO:H21	1:B:1049:PRO:HD3	1.63	0.80
1:A:1055:ASN:HD22	7:A:1323:EDO:H22	1.54	0.70
1:A:1054:ARG:NH1	8:A:1401:HOH:O	2.27	0.67
1:B:1141[B]:ARG:NH2	5:B:1308:PEG:O4	2.29	0.65
1:B:1031:SER:HA	7:B:1321:EDO:H11	1.83	0.59
1:B:1016[B]:ARG:NH1	8:B:1403:HOH:O	2.38	0.55
1:B:1051[A]:ASN:ND2	8:B:1404:HOH:O	2.40	0.54
1:A:1134:ARG:HH21	7:A:1318:EDO:H22	1.72	0.54
1:A:1230[A]:ARG:NH2	1:A:1236[A]:GLU:OE2	2.39	0.49
1:B:1179[B]:ASN:HD22	1:B:1184:VAL:HA	1.76	0.49
1:A:1116:ARG:HH12	7:A:1324:EDO:H12	1.77	0.48
1:A:1245[C]:ARG:NH2	8:A:1408:HOH:O	2.39	0.47
1:B:1010[B]:VAL:HG23	1:B:1034:CYS:HB2	1.95	0.47
1:A:1048[B]:SER:HA	7:B:1320:EDO:H12	1.96	0.47
7:B:1320:EDO:H11	8:B:1772:HOH:O	2.14	0.47
1:B:1021:ILE:HD11	1:B:1124[A]:LEU:HD23	1.96	0.46
1:B:1083:TRP:HZ3	1:B:1093[B]:GLU:HG3	1.81	0.46
1:A:1055:ASN:HD22	7:A:1323:EDO:C2	2.26	0.46
1:A:1245[C]:ARG:HB2	8:A:1439:HOH:O	2.17	0.45
1:B:1142:SER:OG	1:B:1144[B]:GLN:NE2	2.49	0.45
1:A:1048[A]:SER:HA	7:B:1320:EDO:H12	1.99	0.44
1:B:1141[B]:ARG:HH22	5:B:1308:PEG:HO4	1.60	0.44
1:B:1089[B]:ARG:NH2	8:B:1406:HOH:O	2.47	0.43
1:B:1037:ASN:ND2	8:B:1407:HOH:O	2.47	0.43
1:B:1179[A]:ASN:ND2	1:B:1181:ASP:O	2.50	0.43
1:B:1134[B]:ARG:O	7:B:1325:EDO:H11	2.19	0.43
1:A:1021[B]:ILE:HD13	1:A:1021[B]:ILE:H	1.84	0.43
1:B:1129:GLN:HE22	7:B:1322:EDO:H21	1.85	0.42

Continued on next page...

Continued from previous page...

Atom-1	Atom-2	Interatomic distance (Å)	Clash overlap (Å)
1:A:1096[B]:MET:HE3	1:A:1229:THR:HG22	2.00	0.42
1:A:1007[A]:GLU:HG3	1:A:1028:ALA:HB2	2.02	0.41
1:B:1135[B]:ASP:HB3	8:B:1586[B]:HOH:O	2.21	0.41
1:B:1127:ARG:HB2	1:B:1144[B]:GLN:HG3	2.03	0.41
7:B:1324:EDO:H22	8:B:1447:HOH:O	2.21	0.41
1:B:1086:LYS:HG3	7:B:1323:EDO:H22	2.03	0.40
1:A:1058:HIS:CE1	7:A:1323:EDO:H11	2.56	0.40
1:A:1077:GLN:NE2	8:A:1837[B]:HOH:O	2.54	0.40
1:B:1042:SER:OG	6:B:1313:SO4:O1	2.34	0.40

All (1) symmetry-related close contacts are listed below. The label for Atom-2 includes the symmetry operator and encoded unit-cell translations to be applied.

Atom-1	Atom-2	Interatomic distance (Å)	Clash overlap (Å)
8:A:1737:HOH:O	8:B:1532:HOH:O[2_454]	2.16	0.04

5.3 Torsion angles [i](#)

5.3.1 Protein backbone [i](#)

In the following table, the Percentiles column shows the percent Ramachandran outliers of the chain as a percentile score with respect to all X-ray entries followed by that with respect to entries of similar resolution.

The Analysed column shows the number of residues for which the backbone conformation was analysed, and the total number of residues.

Mol	Chain	Analysed	Favoured	Allowed	Outliers	Percentiles	
1	A	286/262 (109%)	269 (94%)	17 (6%)	0	100	100
1	B	287/262 (110%)	275 (96%)	10 (4%)	2 (1%)	18	4
All	All	573/524 (109%)	544 (95%)	27 (5%)	2 (0%)	43	16

All (2) Ramachandran outliers are listed below:

Mol	Chain	Res	Type
1	B	1178[A]	ASP
1	B	1178[B]	ASP

5.3.2 Protein sidechains [i](#)

In the following table, the Percentiles column shows the percent sidechain outliers of the chain as a percentile score with respect to all X-ray entries followed by that with respect to entries of similar resolution.

The Analysed column shows the number of residues for which the sidechain conformation was analysed, and the total number of residues.

Mol	Chain	Analysed	Rotameric	Outliers	Percentiles	
1	A	262/236 (111%)	262 (100%)	0	100	100
1	B	264/236 (112%)	262 (99%)	2 (1%)	73	48
All	All	526/472 (111%)	524 (100%)	2 (0%)	84	68

All (2) residues with a non-rotameric sidechain are listed below:

Mol	Chain	Res	Type
1	B	1021	ILE
1	B	1184	VAL

Sometimes sidechains can be flipped to improve hydrogen bonding and reduce clashes. All (1) such sidechains are listed below:

Mol	Chain	Res	Type
1	A	1077	GLN

5.3.3 RNA [i](#)

There are no RNA molecules in this entry.

5.4 Non-standard residues in protein, DNA, RNA chains [i](#)

There are no non-standard protein/DNA/RNA residues in this entry.

5.5 Carbohydrates [i](#)

There are no oligosaccharides in this entry.

5.6 Ligand geometry [i](#)

Of 53 ligands modelled in this entry, 8 are monoatomic - leaving 45 for Mogul analysis.

In the following table, the Counts columns list the number of bonds (or angles) for which Mogul statistics could be retrieved, the number of bonds (or angles) that are observed in the model and the number of bonds (or angles) that are defined in the Chemical Component Dictionary. The Link column lists molecule types, if any, to which the group is linked. The Z score for a bond length (or angle) is the number of standard deviations the observed value is removed from the expected value. A bond length (or angle) with $|Z| > 2$ is considered an outlier worth inspection. RMSZ is the root-mean-square of all Z scores of the bond lengths (or angles).

Mol	Type	Chain	Res	Link	Bond lengths			Bond angles		
					Counts	RMSZ	$\# Z > 2$	Counts	RMSZ	$\# Z > 2$
7	EDO	B	1319	-	3,3,3	0.41	0	2,2,2	0.42	0
7	EDO	A	1325	-	3,3,3	0.41	0	2,2,2	0.53	0
7	EDO	A	1327	-	3,3,3	0.41	0	2,2,2	0.41	0
5	PEG	A	1307	-	6,6,6	0.11	0	5,5,5	0.11	0
7	EDO	A	1318	-	3,3,3	0.39	0	2,2,2	0.49	0
7	EDO	A	1320	-	3,3,3	0.40	0	2,2,2	0.36	0
5	PEG	B	1309	-	6,6,6	0.10	0	5,5,5	0.13	0
6	SO4	A	1312	-	4,4,4	0.22	0	6,6,6	0.12	0
7	EDO	B	1325	-	3,3,3	0.37	0	2,2,2	0.31	0
4	A1CXM	B	1306	-	28,30,30	0.68	0	31,42,42	1.78	10 (32%)
6	SO4	A	1313	-	4,4,4	0.26	0	6,6,6	0.17	0
7	EDO	B	1321	-	3,3,3	0.42	0	2,2,2	0.32	0
6	SO4	A	1311	-	4,4,4	0.24	0	6,6,6	0.08	0
7	EDO	A	1321	-	3,3,3	0.42	0	2,2,2	0.44	0
3	SAM	A	1305	-	27,29,29	0.97	3 (11%)	34,42,42	1.70	8 (23%)
6	SO4	B	1310	-	4,4,4	0.21	0	6,6,6	0.51	0
7	EDO	B	1320	-	3,3,3	0.40	0	2,2,2	0.41	0
6	SO4	A	1315	-	4,4,4	0.25	0	6,6,6	0.12	0
6	SO4	A	1309	-	4,4,4	0.32	0	6,6,6	0.34	0
6	SO4	B	1316	-	4,4,4	0.24	0	6,6,6	0.06	0
7	EDO	A	1317	-	3,3,3	0.44	0	2,2,2	0.36	0
7	EDO	B	1317	-	3,3,3	0.40	0	2,2,2	0.48	0
7	EDO	B	1323	-	3,3,3	0.40	0	2,2,2	0.37	0
7	EDO	A	1326	-	3,3,3	0.41	0	2,2,2	0.40	0
7	EDO	B	1324	-	3,3,3	0.43	0	2,2,2	0.34	0
7	EDO	B	1326	-	3,3,3	0.42	0	2,2,2	0.40	0
6	SO4	B	1312	-	4,4,4	0.22	0	6,6,6	0.10	0
7	EDO	A	1324	-	3,3,3	0.42	0	2,2,2	0.39	0
6	SO4	B	1314	-	4,4,4	0.26	0	6,6,6	0.17	0
3	SAM	B	1305	-	27,29,29	0.98	2 (7%)	34,42,42	1.75	8 (23%)
7	EDO	A	1323	-	3,3,3	0.40	0	2,2,2	0.36	0
6	SO4	B	1311	-	4,4,4	0.24	0	6,6,6	0.11	0
7	EDO	A	1322	-	3,3,3	0.41	0	2,2,2	0.27	0
6	SO4	A	1314	-	4,4,4	0.32	0	6,6,6	0.69	0
7	EDO	B	1318	-	3,3,3	0.34	0	2,2,2	0.44	0

Mol	Type	Chain	Res	Link	Bond lengths			Bond angles		
					Counts	RMSZ	# Z > 2	Counts	RMSZ	# Z > 2
4	A1CXM	A	1306	-	28,30,30	0.70	0	31,42,42	1.71	6 (19%)
6	SO4	A	1316[A]	-	4,4,4	0.26	0	6,6,6	0.06	0
7	EDO	B	1322	-	3,3,3	0.45	0	2,2,2	0.35	0
5	PEG	B	1307	-	6,6,6	0.18	0	5,5,5	0.05	0
6	SO4	A	1308	-	4,4,4	0.25	0	6,6,6	0.25	0
6	SO4	A	1310[A]	-	4,4,4	0.26	0	6,6,6	0.27	0
6	SO4	B	1315	-	4,4,4	0.23	0	6,6,6	0.08	0
5	PEG	B	1308	-	6,6,6	0.12	0	5,5,5	0.06	0
7	EDO	A	1319	-	3,3,3	0.43	0	2,2,2	0.35	0
6	SO4	B	1313	-	4,4,4	0.20	0	6,6,6	0.31	0

In the following table, the Chirals column lists the number of chiral outliers, the number of chiral centers analysed, the number of these observed in the model and the number defined in the Chemical Component Dictionary. Similar counts are reported in the Torsion and Rings columns. '-' means no outliers of that kind were identified.

Mol	Type	Chain	Res	Link	Chirals	Torsions	Rings
7	EDO	B	1319	-	-	1/1/1/1	-
7	EDO	A	1325	-	-	0/1/1/1	-
7	EDO	A	1327	-	-	0/1/1/1	-
5	PEG	A	1307	-	-	2/4/4/4	-
7	EDO	A	1318	-	-	0/1/1/1	-
5	PEG	B	1309	-	-	4/4/4/4	-
7	EDO	B	1325	-	-	1/1/1/1	-
4	A1CXM	B	1306	-	-	0/8/25/25	0/3/4/4
7	EDO	B	1321	-	-	1/1/1/1	-
7	EDO	A	1321	-	-	0/1/1/1	-
3	SAM	A	1305	-	-	2/17/33/33	0/3/3/3
7	EDO	B	1320	-	-	1/1/1/1	-
7	EDO	B	1317	-	-	0/1/1/1	-
7	EDO	A	1317	-	-	0/1/1/1	-
7	EDO	B	1323	-	-	0/1/1/1	-
7	EDO	A	1326	-	-	0/1/1/1	-
7	EDO	B	1324	-	-	0/1/1/1	-
7	EDO	B	1326	-	-	1/1/1/1	-
7	EDO	A	1324	-	-	0/1/1/1	-
3	SAM	B	1305	-	-	2/17/33/33	0/3/3/3
7	EDO	A	1323	-	-	0/1/1/1	-
7	EDO	A	1322	-	-	0/1/1/1	-
7	EDO	B	1318	-	-	1/1/1/1	-
4	A1CXM	A	1306	-	-	0/8/25/25	0/3/4/4

Continued on next page...

Continued from previous page...

Mol	Type	Chain	Res	Link	Chirals	Torsions	Rings
7	EDO	B	1322	-	-	0/1/1/1	-
5	PEG	B	1307	-	-	0/4/4/4	-
5	PEG	B	1308	-	-	2/4/4/4	-
7	EDO	A	1319	-	-	0/1/1/1	-
7	EDO	A	1320	-	-	1/1/1/1	-

All (5) bond length outliers are listed below:

Mol	Chain	Res	Type	Atoms	Z	Observed(Å)	Ideal(Å)
3	A	1305	SAM	C2-N1	2.40	1.38	1.33
3	B	1305	SAM	C2-N1	2.37	1.38	1.33
3	A	1305	SAM	C2-N3	2.14	1.37	1.33
3	A	1305	SAM	OXT-C	-2.13	1.23	1.30
3	B	1305	SAM	C2-N3	2.06	1.37	1.33

All (32) bond angle outliers are listed below:

Mol	Chain	Res	Type	Atoms	Z	Observed(°)	Ideal(°)
3	B	1305	SAM	N3-C2-N1	-5.28	120.59	128.58
3	A	1305	SAM	N3-C2-N1	-4.51	121.75	128.58
4	A	1306	A1CXM	C13-O-C10	4.12	110.05	107.07
3	A	1305	SAM	C5-C4-N3	-4.08	121.10	126.72
4	B	1306	A1CXM	C13-O-C10	4.02	109.98	107.07
4	A	1306	A1CXM	C5-N3-C4	-3.88	119.38	122.96
3	B	1305	SAM	C5-C4-N3	-3.79	121.50	126.72
3	B	1305	SAM	N9-C8-N7	-3.65	108.76	113.94
4	B	1306	A1CXM	C3-N1-C2	3.40	122.58	115.98
3	A	1305	SAM	C5-N7-C8	3.25	108.56	103.45
3	A	1305	SAM	N9-C8-N7	-3.24	109.34	113.94
3	B	1305	SAM	C5-N7-C8	3.21	108.49	103.45
4	B	1306	A1CXM	O-C13-C14	-3.16	104.60	107.86
4	A	1306	A1CXM	C3-N1-C2	3.03	121.86	115.98
3	B	1305	SAM	C2-N3-C4	2.89	118.88	111.83
4	A	1306	A1CXM	N2-C3-N1	-2.87	121.56	126.26
3	A	1305	SAM	C4-C5-N7	-2.85	107.33	110.58
4	B	1306	A1CXM	N2-C3-N1	-2.83	121.62	126.26
3	A	1305	SAM	C2-N3-C4	2.75	118.55	111.83
4	B	1306	A1CXM	C1-C2-N1	-2.54	117.96	121.50
3	A	1305	SAM	N3-C4-N9	2.46	131.35	127.17
4	B	1306	A1CXM	O-C10-C11	-2.42	112.01	113.59
3	B	1305	SAM	C4-C5-N7	-2.41	107.82	110.58
4	B	1306	A1CXM	C5-N3-C4	-2.33	120.81	122.96

Continued on next page...

Continued from previous page...

Mol	Chain	Res	Type	Atoms	Z	Observed(°)	Ideal(°)
4	B	1306	A1CXM	C12-C7-C8	2.26	119.68	117.81
3	B	1305	SAM	N3-C4-N9	2.24	130.97	127.17
4	A	1306	A1CXM	C12-C7-C8	2.19	119.62	117.81
4	A	1306	A1CXM	C1-C2-N1	-2.10	118.58	121.50
3	A	1305	SAM	C6-C5-C4	2.07	120.01	117.18
4	B	1306	A1CXM	C6-C2-N1	2.03	119.63	116.56
4	B	1306	A1CXM	C8-C9-C15	-2.03	121.67	122.95
3	B	1305	SAM	OXT-C-O	-2.00	119.54	124.08

There are no chirality outliers.

All (19) torsion outliers are listed below:

Mol	Chain	Res	Type	Atoms
3	A	1305	SAM	CB-CG-SD-CE
3	A	1305	SAM	CB-CG-SD-C5'
3	B	1305	SAM	CB-CG-SD-CE
3	B	1305	SAM	CB-CG-SD-C5'
5	B	1309	PEG	O2-C3-C4-O4
5	A	1307	PEG	O1-C1-C2-O2
7	B	1320	EDO	O1-C1-C2-O2
7	B	1321	EDO	O1-C1-C2-O2
7	B	1325	EDO	O1-C1-C2-O2
7	B	1326	EDO	O1-C1-C2-O2
5	B	1309	PEG	C4-C3-O2-C2
5	B	1308	PEG	C4-C3-O2-C2
5	B	1308	PEG	C1-C2-O2-C3
7	A	1320	EDO	O1-C1-C2-O2
5	B	1309	PEG	C1-C2-O2-C3
7	B	1318	EDO	O1-C1-C2-O2
5	B	1309	PEG	O1-C1-C2-O2
5	A	1307	PEG	C4-C3-O2-C2
7	B	1319	EDO	O1-C1-C2-O2

There are no ring outliers.

11 monomers are involved in 21 short contacts:

Mol	Chain	Res	Type	Clashes	Symm-Clashes
7	A	1318	EDO	1	0
7	B	1325	EDO	5	0
7	B	1321	EDO	1	0
7	B	1320	EDO	3	0

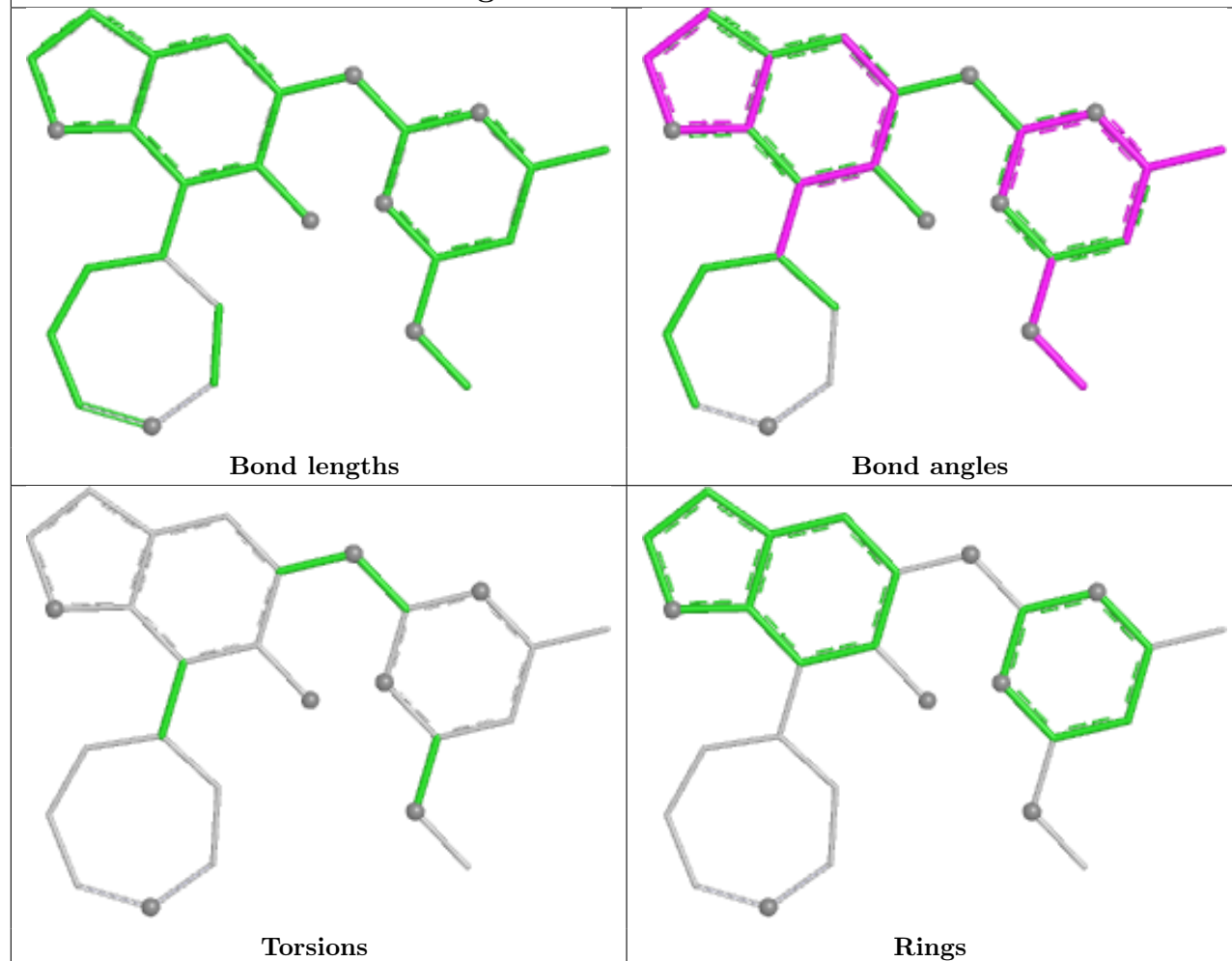
Continued on next page...

Continued from previous page...

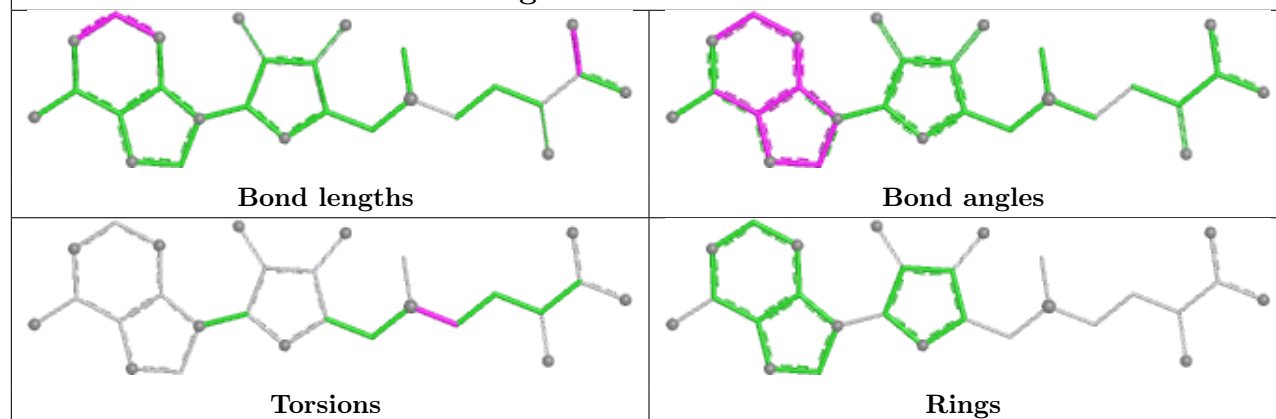
Mol	Chain	Res	Type	Clashes	Symm-Clashes
7	B	1323	EDO	1	0
7	B	1324	EDO	1	0
7	A	1324	EDO	1	0
7	A	1323	EDO	4	0
7	B	1322	EDO	1	0
5	B	1308	PEG	2	0
6	B	1313	SO4	1	0

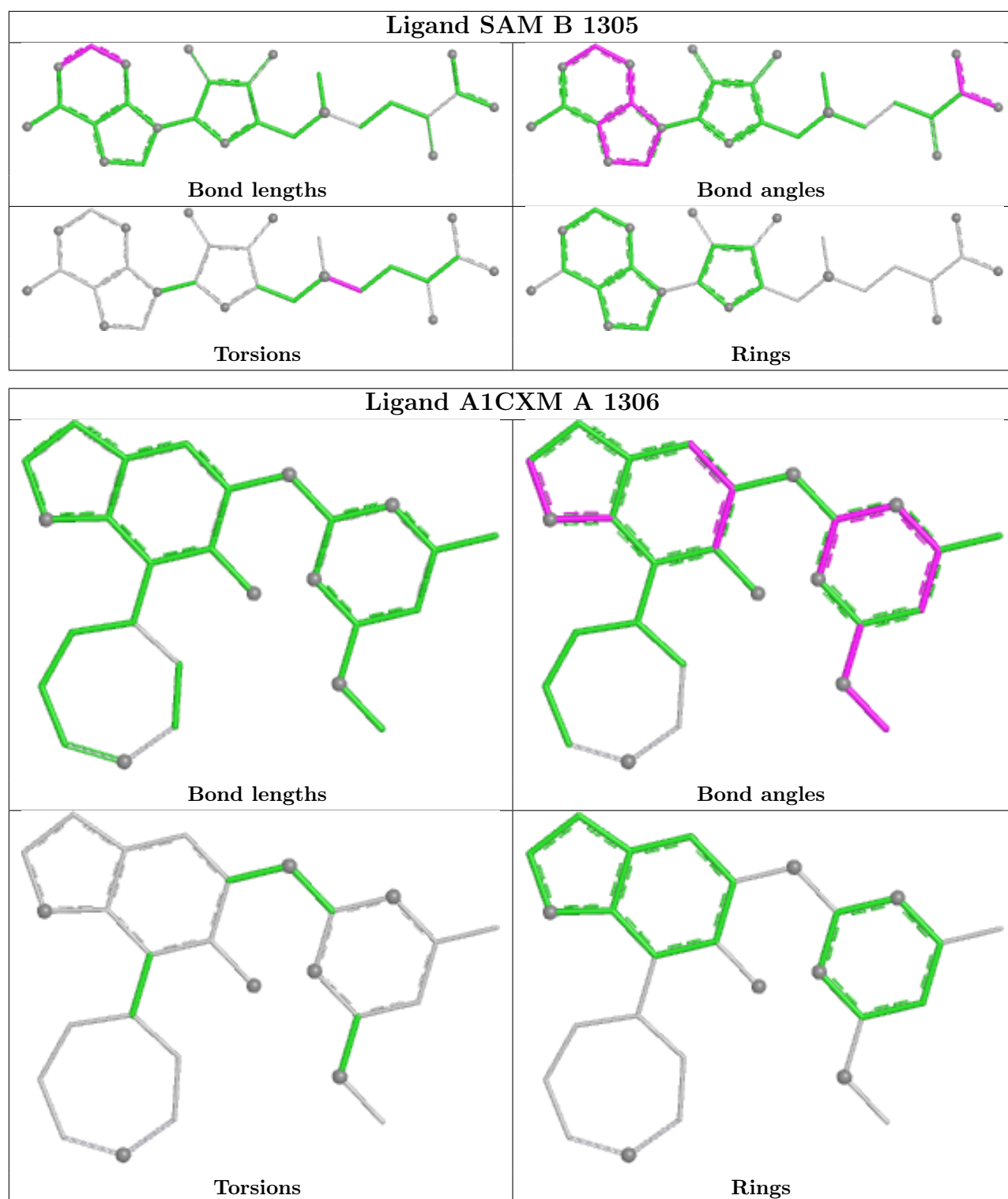
The following is a two-dimensional graphical depiction of Mogul quality analysis of bond lengths, bond angles, torsion angles, and ring geometry for all instances of the Ligand of Interest. In addition, ligands with molecular weight > 250 and outliers as shown on the validation Tables will also be included. For torsion angles, if less than 5% of the Mogul distribution of torsion angles is within 10 degrees of the torsion angle in question, then that torsion angle is considered an outlier. Any bond that is central to one or more torsion angles identified as an outlier by Mogul will be highlighted in the graph. For rings, the root-mean-square deviation (RMSD) between the ring in question and similar rings identified by Mogul is calculated over all ring torsion angles. If the average RMSD is greater than 60 degrees and the minimal RMSD between the ring in question and any Mogul-identified rings is also greater than 60 degrees, then that ring is considered an outlier. The outliers are highlighted in purple. The color gray indicates Mogul did not find sufficient equivalents in the CSD to analyse the geometry.

Ligand A1CXM B 1306



Ligand SAM A 1305





5.7 Other polymers ⓘ

There are no such residues in this entry.

5.8 Polymer linkage issues ⓘ

There are no chain breaks in this entry.

6 Fit of model and data [i](#)

6.1 Protein, DNA and RNA chains [i](#)

In the following table, the column labelled ‘#RSRZ > 2’ contains the number (and percentage) of RSRZ outliers, followed by percent RSRZ outliers for the chain as percentile scores relative to all X-ray entries and entries of similar resolution. The OWAB column contains the minimum, median, 95th percentile and maximum values of the occupancy-weighted average B-factor per residue. The column labelled ‘Q < 0.9’ lists the number of (and percentage) of residues with an average occupancy less than 0.9.

Mol	Chain	Analysed	<RSRZ>	#RSRZ>2	OWAB(Å ²)	Q<0.9
1	A	262/262 (100%)	-0.39	3 (1%) 78 83	5, 12, 24, 43	27 (10%)
1	B	259/262 (98%)	-0.30	11 (4%) 40 46	5, 12, 26, 60	30 (11%)
All	All	521/524 (99%)	-0.35	14 (2%) 56 61	5, 12, 25, 60	57 (10%)

All (14) RSRZ outliers are listed below:

Mol	Chain	Res	Type	RSRZ
1	B	1179[A]	ASN	6.2
1	A	1006	VAL	4.1
1	A	1005	GLY	3.9
1	B	1181	ASP	3.7
1	B	1182	GLY	3.6
1	B	1008	ARG	3.0
1	B	1178[A]	ASP	3.0
1	B	1183	GLU	2.8
1	B	1009	ILE	2.8
1	B	1180	LYS	2.6
1	B	1253	LEU	2.5
1	A	1181	ASP	2.2
1	B	1184	VAL	2.2
1	B	1252[A]	LYS	2.2

6.2 Non-standard residues in protein, DNA, RNA chains [i](#)

There are no non-standard protein/DNA/RNA residues in this entry.

6.3 Carbohydrates [i](#)

There are no oligosaccharides in this entry.

6.4 Ligands ⓘ

In the following table, the Atoms column lists the number of modelled atoms in the group and the number defined in the chemical component dictionary. The B-factors column lists the minimum, median, 95th percentile and maximum values of B factors of atoms in the group. The column labelled 'Q<0.9' lists the number of atoms with occupancy less than 0.9.

Mol	Type	Chain	Res	Atoms	RSCC	RSR	B-factors(Å ²)	Q<0.9
7	EDO	A	1318	4/4	0.58	0.22	51,52,52,53	0
7	EDO	A	1322	4/4	0.71	0.20	52,52,52,53	0
7	EDO	B	1322	4/4	0.76	0.18	52,52,53,53	0
7	EDO	A	1327	4/4	0.77	0.15	53,53,53,53	0
5	PEG	B	1308	7/7	0.77	0.16	40,43,44,44	0
7	EDO	A	1317	4/4	0.78	0.17	41,42,44,44	0
7	EDO	A	1321	4/4	0.79	0.17	53,54,54,55	0
7	EDO	A	1326	4/4	0.79	0.18	49,49,50,50	0
7	EDO	B	1319	4/4	0.80	0.16	49,49,50,50	0
7	EDO	A	1325	4/4	0.80	0.17	52,52,52,52	0
7	EDO	A	1324	4/4	0.81	0.15	43,44,45,46	0
5	PEG	B	1309	7/7	0.81	0.14	39,41,44,45	0
7	EDO	B	1326	4/4	0.81	0.15	45,46,47,47	0
7	EDO	A	1320	4/4	0.82	0.15	45,45,46,46	0
7	EDO	B	1321	4/4	0.82	0.18	53,53,54,54	0
7	EDO	A	1319	4/4	0.84	0.12	50,50,50,50	0
6	SO4	A	1316[A]	5/5	0.84	0.13	53,53,54,54	5
7	EDO	B	1320	4/4	0.85	0.14	27,30,33,36	0
7	EDO	B	1318	4/4	0.85	0.15	30,32,34,35	0
5	PEG	A	1307	7/7	0.86	0.16	50,51,53,54	0
7	EDO	B	1323	4/4	0.87	0.13	29,32,33,33	0
7	EDO	A	1323	4/4	0.88	0.14	40,42,42,42	0
7	EDO	B	1317	4/4	0.88	0.13	48,48,48,48	0
7	EDO	B	1324	4/4	0.88	0.13	41,42,43,44	0
6	SO4	B	1316	5/5	0.88	0.11	57,57,57,58	5
7	EDO	B	1325	4/4	0.89	0.12	33,35,36,37	0
5	PEG	B	1307	7/7	0.89	0.11	18,22,26,26	0
6	SO4	B	1312	5/5	0.90	0.12	41,41,42,42	5
6	SO4	A	1315	5/5	0.91	0.10	29,29,30,31	5
6	SO4	B	1311	5/5	0.92	0.09	38,39,40,41	5
6	SO4	B	1315	5/5	0.92	0.10	39,39,40,40	5
6	SO4	A	1313	5/5	0.94	0.09	30,31,32,33	5
6	SO4	B	1313	5/5	0.96	0.08	20,20,22,22	5
6	SO4	A	1311	5/5	0.96	0.07	31,31,32,33	5
6	SO4	A	1314	5/5	0.97	0.08	16,17,18,19	5
4	A1CXM	A	1306	27/27	0.98	0.04	9,10,15,15	0
4	A1CXM	B	1306	27/27	0.98	0.04	12,13,15,15	0

Continued on next page...

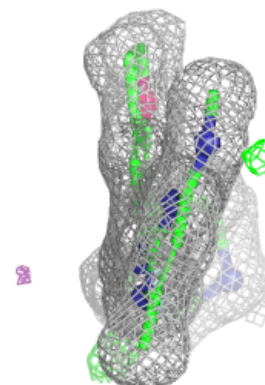
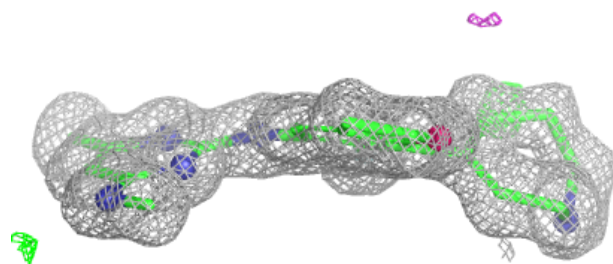
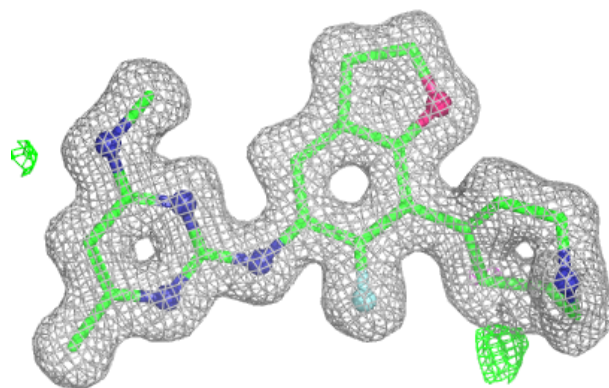
Continued from previous page...

Mol	Type	Chain	Res	Atoms	RSCC	RSR	B-factors(\AA^2)	Q<0.9
6	SO4	A	1310[A]	5/5	0.98	0.06	18,20,22,22	5
6	SO4	B	1310	5/5	0.98	0.05	15,16,18,19	5
3	SAM	A	1305	27/27	0.98	0.04	9,12,16,17	0
3	SAM	B	1305	27/27	0.98	0.04	10,13,16,17	0
6	SO4	B	1314	5/5	0.99	0.06	18,18,19,20	5
6	SO4	A	1312	5/5	0.99	0.05	14,15,16,17	5
6	SO4	A	1308	5/5	0.99	0.04	16,16,18,21	5
6	SO4	A	1309	5/5	0.99	0.04	15,15,16,16	5
2	ZN	B	1302	1/1	1.00	0.00	9,9,9,9	0
2	ZN	B	1303	1/1	1.00	0.01	9,9,9,9	0
2	ZN	B	1304	1/1	1.00	0.01	12,12,12,12	0
2	ZN	A	1301	1/1	1.00	0.00	9,9,9,9	0
2	ZN	A	1302	1/1	1.00	0.01	9,9,9,9	0
2	ZN	A	1303	1/1	1.00	0.01	10,10,10,10	0
2	ZN	A	1304	1/1	1.00	0.01	12,12,12,12	0
2	ZN	B	1301	1/1	1.00	0.01	9,9,9,9	0

The following is a graphical depiction of the model fit to experimental electron density of all instances of the Ligand of Interest. In addition, ligands with molecular weight > 250 and outliers as shown on the geometry validation Tables will also be included. Each fit is shown from different orientation to approximate a three-dimensional view.

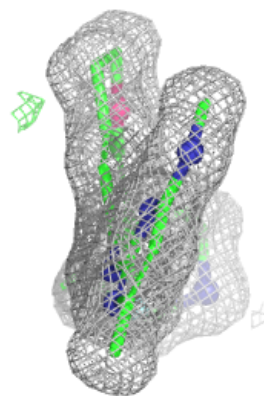
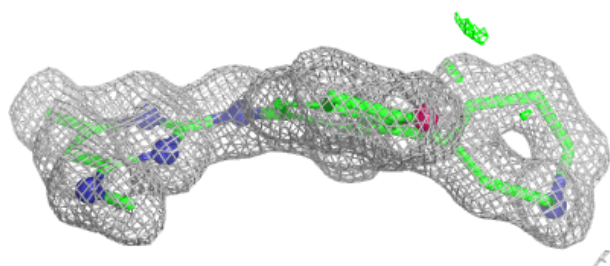
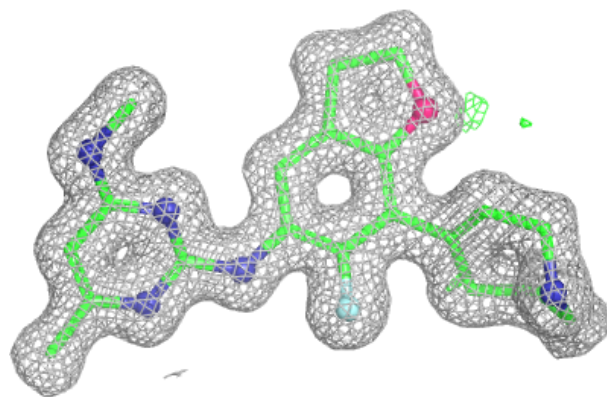
Electron density around A1CXM A 1306:

2mF_o-DF_c (at 0.7 rmsd) in gray
mF_o-DF_c (at 3 rmsd) in purple (negative)
and green (positive)

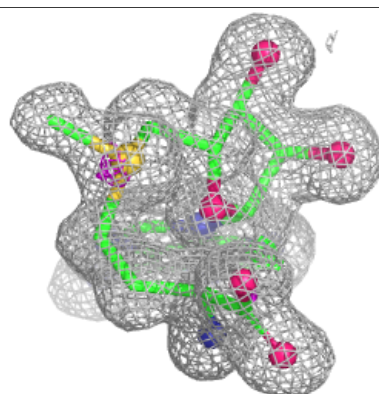
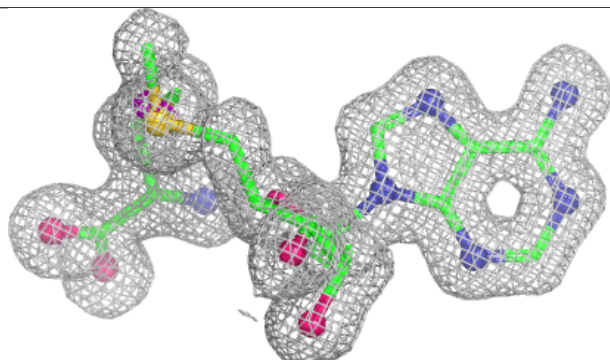
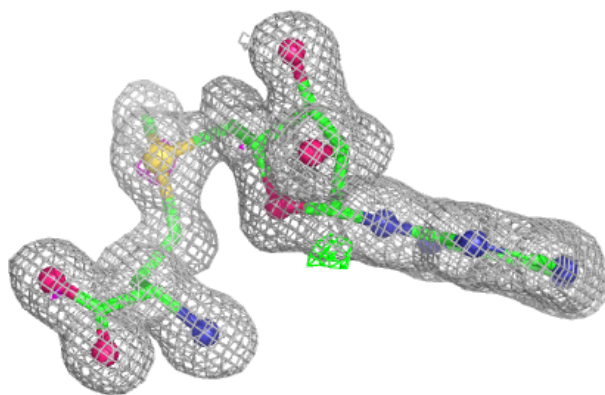


Electron density around A1CXM B 1306:

$2mF_o-DF_c$ (at 0.7 rmsd) in gray
 mF_o-DF_c (at 3 rmsd) in purple (negative)
and green (positive)

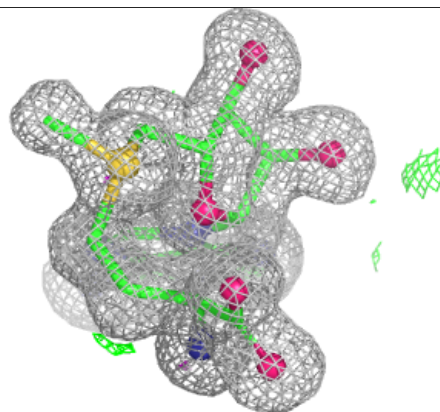
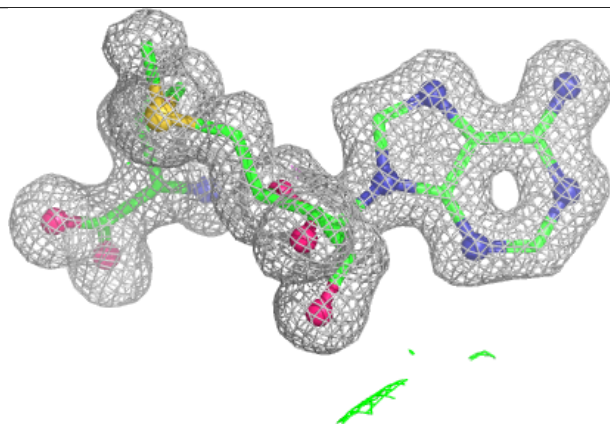
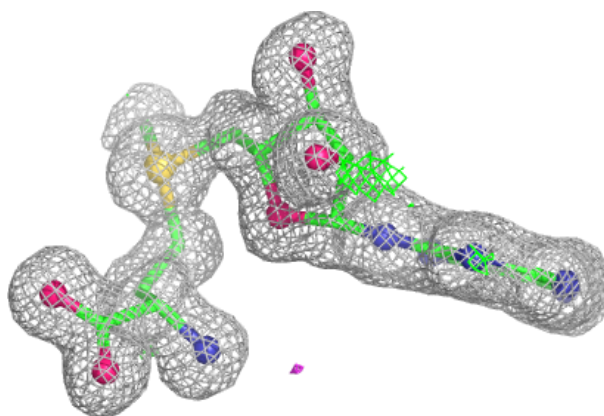
**Electron density around SAM A 1305:**

$2mF_o-DF_c$ (at 0.7 rmsd) in gray
 mF_o-DF_c (at 3 rmsd) in purple (negative)
and green (positive)



Electron density around SAM B 1305:

$2mF_o-DF_c$ (at 0.7 rmsd) in gray
 mF_o-DF_c (at 3 rmsd) in purple (negative)
and green (positive)



6.5 Other polymers [i](#)

There are no such residues in this entry.