



wwPDB X-ray Structure Validation Summary Report ⓘ

Sep 17, 2023 – 07:11 PM EDT

PDB ID : 4YIC
Title : CRYSTAL STRUCTURE OF A TRAP TRANSPORTER SOLUTE BINDING PROTEIN (IPR025997) FROM BORDETELLA BRONCHISEPTICA RB50 (BB0280, TARGET EFI-500035) WITH BOUND PICOLINIC ACID
Authors : Vetting, M.W.; Al Obaidi, N.F.; Toro, R.; Morisco, L.L.; Benach, J.; Koss, J.; Wasserman, S.R.; Attonito, J.D.; Scott Glenn, A.; Chamala, S.; Chowdhury, S.; Lafleur, J.; Love, J.; Seidel, R.D.; Whalen, K.L.; Gerlt, J.A.; Almo, S.C.; Enzyme Function Initiative (EFI)
Deposited on : 2015-03-01
Resolution : 1.60 Å(reported)

This is a wwPDB X-ray Structure Validation Summary Report for a publicly released PDB entry.

We welcome your comments at validation@mail.wwpdb.org

A user guide is available at

<https://www.wwpdb.org/validation/2017/XrayValidationReportHelp>

with specific help available everywhere you see the ⓘ symbol.

The types of validation reports are described at

<http://www.wwpdb.org/validation/2017/FAQs#types>.

The following versions of software and data (see [references ⓘ](#)) were used in the production of this report:

MolProbity : 4.02b-467
Mogul : 1.8.5 (274361), CSD as541be (2020)
Xtriage (Phenix) : 1.13
EDS : 2.35.1
Percentile statistics : 20191225.v01 (using entries in the PDB archive December 25th 2019)
Refmac : 5.8.0158
CCP4 : 7.0.044 (Gargrove)
Ideal geometry (proteins) : Engh & Huber (2001)

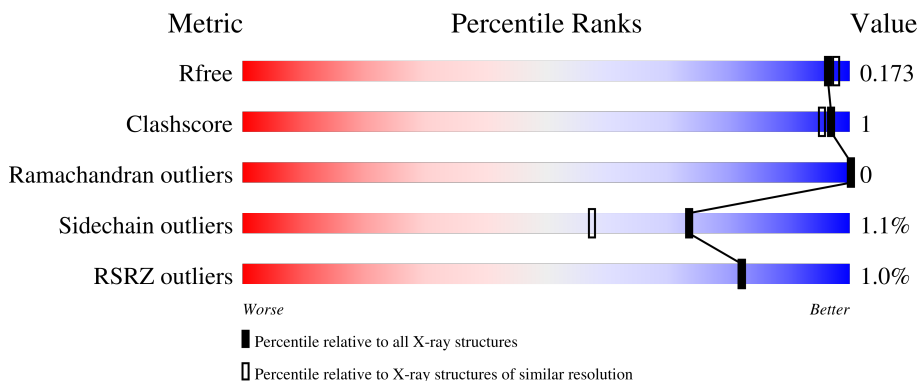
1 Overall quality at a glance

The following experimental techniques were used to determine the structure:

X-RAY DIFFRACTION

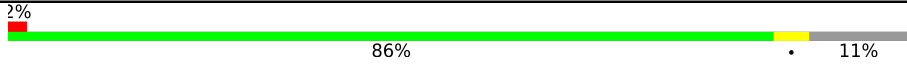

The reported resolution of this entry is 1.60 Å.

Percentile scores (ranging between 0-100) for global validation metrics of the entry are shown in the following graphic. The table shows the number of entries on which the scores are based.



Metric	Whole archive (#Entries)	Similar resolution (#Entries, resolution range(Å))
R_{free}	130704	3398 (1.60-1.60)
Clashscore	141614	3665 (1.60-1.60)
Ramachandran outliers	138981	3564 (1.60-1.60)
Sidechain outliers	138945	3563 (1.60-1.60)
RSRZ outliers	127900	3321 (1.60-1.60)

The table below summarises the geometric issues observed across the polymeric chains and their fit to the electron density. The red, orange, yellow and green segments of the lower bar indicate the fraction of residues that contain outliers for ≥ 3 , 2, 1 and 0 types of geometric quality criteria respectively. A grey segment represents the fraction of residues that are not modelled. The numeric value for each fraction is indicated below the corresponding segment, with a dot representing fractions $\leq 5\%$. The upper red bar (where present) indicates the fraction of residues that have poor fit to the electron density. The numeric value is given above the bar.

Mol	Chain	Length	Quality of chain
1	A	385	 2% 86% 11%
1	B	385	 86% 11%

Ideal geometry (DNA, RNA) : Parkinson et al. (1996)
 Validation Pipeline (wwPDB-VP) : 2.35.1

2 Entry composition [i](#)

There are 6 unique types of molecules in this entry. The entry contains 11383 atoms, of which 5236 are hydrogens and 0 are deuteriums.

In the tables below, the ZeroOcc column contains the number of atoms modelled with zero occupancy, the AltConf column contains the number of residues with at least one atom in alternate conformation and the Trace column contains the number of residues modelled with at most 2 atoms.

- Molecule 1 is a protein called TRAP TRANSPORTER SOLUTE BINDING PROTEIN.

Mol	Chain	Residues	Atoms						ZeroOcc	AltConf	Trace
			Total	C	H	N	O	S			
1	A	344	5298	1714	2611	458	501	14	0	2	0
1	B	343	5299	1718	2611	456	500	14	0	2	0

There are 36 discrepancies between the modelled and reference sequences:

Chain	Residue	Modelled	Actual	Comment	Reference
A	369	ALA	-	expression tag	UNP X5ID49
A	370	GLU	-	expression tag	UNP X5ID49
A	371	ASN	-	expression tag	UNP X5ID49
A	372	LEU	-	expression tag	UNP X5ID49
A	373	TYR	-	expression tag	UNP X5ID49
A	374	PHE	-	expression tag	UNP X5ID49
A	375	GLN	-	expression tag	UNP X5ID49
A	376	GLY	-	expression tag	UNP X5ID49
A	377	HIS	-	expression tag	UNP X5ID49
A	378	HIS	-	expression tag	UNP X5ID49
A	379	HIS	-	expression tag	UNP X5ID49
A	380	HIS	-	expression tag	UNP X5ID49
A	381	HIS	-	expression tag	UNP X5ID49
A	382	HIS	-	expression tag	UNP X5ID49
A	383	HIS	-	expression tag	UNP X5ID49
A	384	HIS	-	expression tag	UNP X5ID49
A	385	HIS	-	expression tag	UNP X5ID49
A	386	HIS	-	expression tag	UNP X5ID49
B	369	ALA	-	expression tag	UNP X5ID49
B	370	GLU	-	expression tag	UNP X5ID49
B	371	ASN	-	expression tag	UNP X5ID49
B	372	LEU	-	expression tag	UNP X5ID49
B	373	TYR	-	expression tag	UNP X5ID49
B	374	PHE	-	expression tag	UNP X5ID49
B	375	GLN	-	expression tag	UNP X5ID49

Continued on next page...

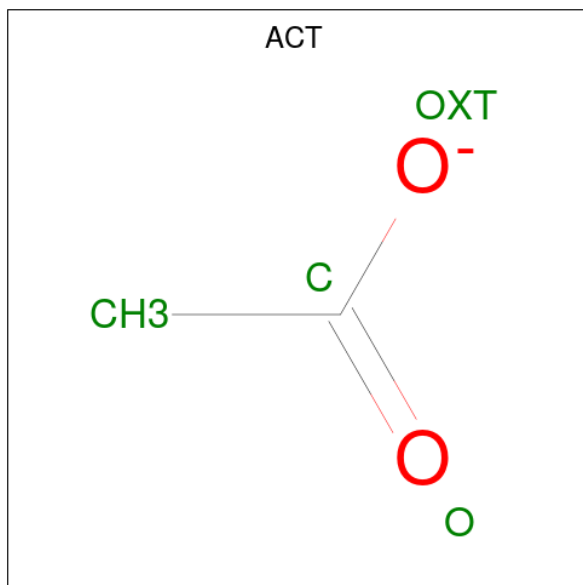
Continued from previous page...

Chain	Residue	Modelled	Actual	Comment	Reference
B	376	GLY	-	expression tag	UNP X5ID49
B	377	HIS	-	expression tag	UNP X5ID49
B	378	HIS	-	expression tag	UNP X5ID49
B	379	HIS	-	expression tag	UNP X5ID49
B	380	HIS	-	expression tag	UNP X5ID49
B	381	HIS	-	expression tag	UNP X5ID49
B	382	HIS	-	expression tag	UNP X5ID49
B	383	HIS	-	expression tag	UNP X5ID49
B	384	HIS	-	expression tag	UNP X5ID49
B	385	HIS	-	expression tag	UNP X5ID49
B	386	HIS	-	expression tag	UNP X5ID49

- Molecule 2 is CALCIUM ION (three-letter code: CA) (formula: Ca).

Mol	Chain	Residues	Atoms	ZeroOcc	AltConf
2	A	1	Total Ca 1 1	0	0
2	B	1	Total Ca 1 1	0	0

- Molecule 3 is ACETATE ION (three-letter code: ACT) (formula: C₂H₃O₂).



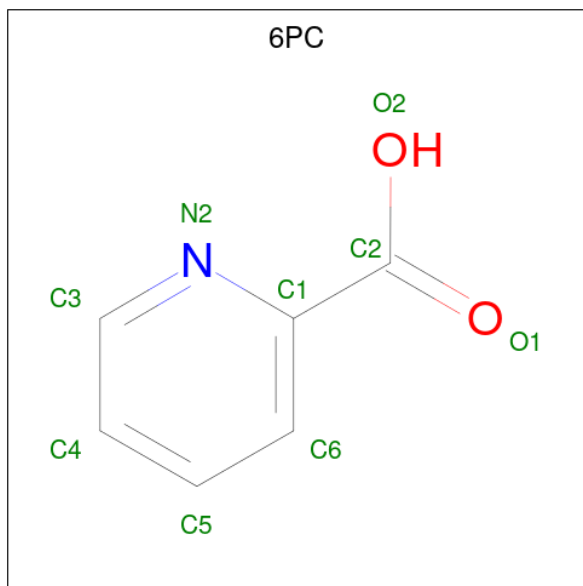
Mol	Chain	Residues	Atoms	ZeroOcc	AltConf
3	A	1	Total C H O 7 2 3 2	0	0

Continued on next page...

Continued from previous page...

Mol	Chain	Residues	Atoms				ZeroOcc	AltConf
3	A	1	Total	C	H	O	0	0
			7	2	3	2		
3	B	1	Total	C	H	O	0	0
			7	2	3	2		

- Molecule 4 is PYRIDINE-2-CARBOXYLIC ACID (three-letter code: 6PC) (formula: $C_6H_5NO_2$).



Mol	Chain	Residues	Atoms				ZeroOcc	AltConf
4	A	1	Total	C	N	O	0	0
			9	6	1	2		
4	B	1	Total	C	N	O	0	0
			9	6	1	2		

- Molecule 5 is IMIDAZOLE (three-letter code: IMD) (formula: $C_3H_5N_2$).



Mol	Chain	Residues	Atoms				ZeroOcc	AltConf
			Total	C	H	N		
5	A	1	10	3	5	2	0	0


- Molecule 6 is water.

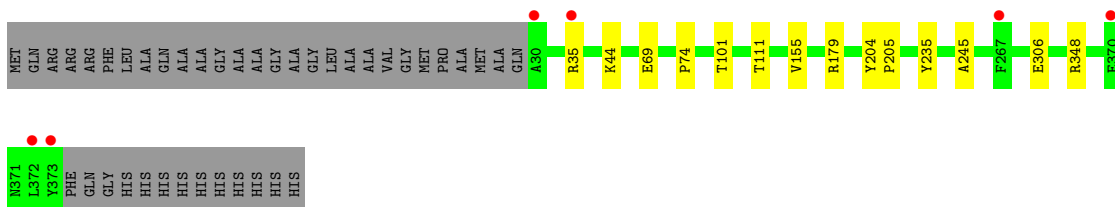
Mol	Chain	Residues	Atoms		ZeroOcc	AltConf
			Total	O		
6	A	362	362	362	0	0
6	B	373	373	373	0	0

3 Residue-property plots


These plots are drawn for all protein, RNA, DNA and oligosaccharide chains in the entry. The first graphic for a chain summarises the proportions of the various outlier classes displayed in the second graphic. The second graphic shows the sequence view annotated by issues in geometry and electron density. Residues are color-coded according to the number of geometric quality criteria for which they contain at least one outlier: green = 0, yellow = 1, orange = 2 and red = 3 or more. A red dot above a residue indicates a poor fit to the electron density (RSRZ > 2). Stretches of 2 or more consecutive residues without any outlier are shown as a green connector. Residues present in the sample, but not in the model, are shown in grey.

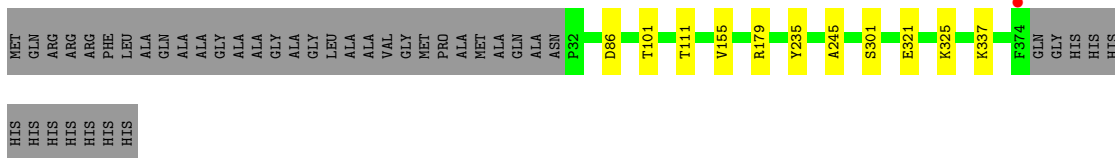
- Molecule 1: TRAP TRANSPORTER SOLUTE BINDING PROTEIN

Chain A: 



- Molecule 1: TRAP TRANSPORTER SOLUTE BINDING PROTEIN

Chain B: 



4 Data and refinement statistics

Property	Value	Source
Space group	P 1 21 1	Depositor
Cell constants a, b, c, α , β , γ	64.68Å 86.14Å 72.34Å 90.00° 100.86° 90.00°	Depositor
Resolution (Å)	25.56 – 1.60 25.56 – 1.60	Depositor EDS
% Data completeness (in resolution range)	99.2 (25.56-1.60) 99.2 (25.56-1.60)	Depositor EDS
R_{merge}	0.07	Depositor
R_{sym}	(Not available)	Depositor
$\langle I/\sigma(I) \rangle$ ¹	1.95 (at 1.60Å)	Xtrriage
Refinement program	PHENIX	Depositor
R, R_{free}	0.143 , 0.173 0.146 , 0.173	Depositor DCC
R_{free} test set	5012 reflections (4.92%)	wwPDB-VP
Wilson B-factor (Å ²)	19.6	Xtrriage
Anisotropy	0.660	Xtrriage
Bulk solvent k_{sol} (e/Å ³), B_{sol} (Å ²)	0.45 , 51.8	EDS
L-test for twinning ²	$\langle L \rangle = 0.50$, $\langle L^2 \rangle = 0.33$	Xtrriage
Estimated twinning fraction	No twinning to report.	Xtrriage
F_o, F_c correlation	0.98	EDS
Total number of atoms	11383	wwPDB-VP
Average B, all atoms (Å ²)	32.0	wwPDB-VP

Xtrriage's analysis on translational NCS is as follows: *The largest off-origin peak in the Patterson function is 4.56% of the height of the origin peak. No significant pseudotranslation is detected.*

¹Intensities estimated from amplitudes.

²Theoretical values of $\langle |L| \rangle$, $\langle L^2 \rangle$ for acentric reflections are 0.5, 0.333 respectively for untwinned datasets, and 0.375, 0.2 for perfectly twinned datasets.

5 Model quality i

5.1 Standard geometry i

Bond lengths and bond angles in the following residue types are not validated in this section: IMD, CA, 6PC, ACT

The Z score for a bond length (or angle) is the number of standard deviations the observed value is removed from the expected value. A bond length (or angle) with $|Z| > 5$ is considered an outlier worth inspection. RMSZ is the root-mean-square of all Z scores of the bond lengths (or angles).

Mol	Chain	Bond lengths		Bond angles	
		RMSZ	# Z >5	RMSZ	# Z >5
1	A	0.46	0/2766	0.61	2/3750 (0.1%)
1	B	0.51	0/2767	0.63	0/3751
All	All	0.48	0/5533	0.62	2/7501 (0.0%)

There are no bond length outliers.

All (2) bond angle outliers are listed below:

Mol	Chain	Res	Type	Atoms	Z	Observed(°)	Ideal(°)
1	A	348	ARG	NE-CZ-NH2	-8.69	115.95	120.30
1	A	348	ARG	NE-CZ-NH1	6.21	123.40	120.30

There are no chirality outliers.

There are no planarity outliers.

5.2 Too-close contacts i

In the following table, the Non-H and H(model) columns list the number of non-hydrogen atoms and hydrogen atoms in the chain respectively. The H(added) column lists the number of hydrogen atoms added and optimized by MolProbity. The Clashes column lists the number of clashes within the asymmetric unit, whereas Symm-Clashes lists symmetry-related clashes.

Mol	Chain	Non-H	H(model)	H(added)	Clashes	Symm-Clashes
1	A	2687	2611	2597	5	0
1	B	2688	2611	2599	5	0
2	A	1	0	0	0	0
2	B	1	0	0	0	0
3	A	8	6	6	0	0
3	B	4	3	3	0	0
4	A	9	0	4	0	0

Continued on next page...

Continued from previous page...

Mol	Chain	Non-H	H(model)	H(added)	Clashes	Symm-Clashes
4	B	9	0	4	0	0
5	A	5	5	5	0	0
6	A	362	0	0	0	0
6	B	373	0	0	2	0
All	All	6147	5236	5218	10	0

The all-atom clashscore is defined as the number of clashes found per 1000 atoms (including hydrogen atoms). The all-atom clashscore for this structure is 1.

The worst 5 of 10 close contacts within the same asymmetric unit are listed below, sorted by their clash magnitude.

Atom-1	Atom-2	Interatomic distance (Å)	Clash overlap (Å)
1:B:337:LYS:NZ	6:B:501:HOH:O	2.31	0.63
1:B:321[A]:GLU:OE2	1:B:325:LYS:NZ	2.32	0.55
1:A:44:LYS:HG3	1:A:74:PRO:HG3	1.88	0.55
1:A:155:VAL:HG22	1:A:245:ALA:HB3	1.94	0.49
1:B:86:ASP:OD2	6:B:728:HOH:O	2.20	0.47

There are no symmetry-related clashes.

5.3 Torsion angles [i](#)

5.3.1 Protein backbone [i](#)

In the following table, the Percentiles column shows the percent Ramachandran outliers of the chain as a percentile score with respect to all X-ray entries followed by that with respect to entries of similar resolution.

The Analysed column shows the number of residues for which the backbone conformation was analysed, and the total number of residues.

Mol	Chain	Analysed	Favoured	Allowed	Outliers	Percentiles	
1	A	344/385 (89%)	338 (98%)	6 (2%)	0	100	100
1	B	343/385 (89%)	338 (98%)	5 (2%)	0	100	100
All	All	687/770 (89%)	676 (98%)	11 (2%)	0	100	100

There are no Ramachandran outliers to report.

5.3.2 Protein sidechains [i](#)

In the following table, the Percentiles column shows the percent sidechain outliers of the chain as a percentile score with respect to all X-ray entries followed by that with respect to entries of similar resolution.

The Analysed column shows the number of residues for which the sidechain conformation was analysed, and the total number of residues.

Mol	Chain	Analysed	Rotameric	Outliers	Percentiles	
1	A	275/299 (92%)	272 (99%)	3 (1%)	73	57
1	B	275/299 (92%)	272 (99%)	3 (1%)	73	57
All	All	550/598 (92%)	544 (99%)	6 (1%)	73	57

5 of 6 residues with a non-rotameric sidechain are listed below:

Mol	Chain	Res	Type
1	B	179	ARG
1	B	235	TYR
1	B	301	SER
1	A	235	TYR
1	A	179	ARG

Sometimes sidechains can be flipped to improve hydrogen bonding and reduce clashes. There are no such sidechains identified.

5.3.3 RNA [i](#)

There are no RNA molecules in this entry.

5.4 Non-standard residues in protein, DNA, RNA chains [i](#)

There are no non-standard protein/DNA/RNA residues in this entry.

5.5 Carbohydrates [i](#)

There are no monosaccharides in this entry.

5.6 Ligand geometry [i](#)

Of 8 ligands modelled in this entry, 2 are monoatomic - leaving 6 for Mogul analysis.

In the following table, the Counts columns list the number of bonds (or angles) for which Mogul statistics could be retrieved, the number of bonds (or angles) that are observed in the model and the number of bonds (or angles) that are defined in the Chemical Component Dictionary. The Link column lists molecule types, if any, to which the group is linked. The Z score for a bond length (or angle) is the number of standard deviations the observed value is removed from the expected value. A bond length (or angle) with $|Z| > 2$ is considered an outlier worth inspection. RMSZ is the root-mean-square of all Z scores of the bond lengths (or angles).

Mol	Type	Chain	Res	Link	Bond lengths			Bond angles		
					Counts	RMSZ	# Z > 2	Counts	RMSZ	# Z > 2
3	ACT	A	402	-	3,3,3	0.83	0	3,3,3	1.05	0
3	ACT	B	402	-	3,3,3	0.78	0	3,3,3	1.62	1 (33%)
4	6PC	A	404	2	9,9,9	2.55	2 (22%)	11,11,11	1.31	1 (9%)
3	ACT	A	403	-	3,3,3	0.75	0	3,3,3	1.34	0
4	6PC	B	403	2	9,9,9	2.33	2 (22%)	11,11,11	1.65	4 (36%)
5	IMD	A	405	-	3,5,5	0.36	0	4,5,5	0.61	0

In the following table, the Chirals column lists the number of chiral outliers, the number of chiral centers analysed, the number of these observed in the model and the number defined in the Chemical Component Dictionary. Similar counts are reported in the Torsion and Rings columns. '-' means no outliers of that kind were identified.

Mol	Type	Chain	Res	Link	Chirals	Torsions	Rings
4	6PC	A	404	2	-	0/4/4/4	0/1/1/1
5	IMD	A	405	-	-	-	0/1/1/1
4	6PC	B	403	2	-	0/4/4/4	0/1/1/1

All (4) bond length outliers are listed below:

Mol	Chain	Res	Type	Atoms	Z	Observed(Å)	Ideal(Å)
4	A	404	6PC	C1-C2	-6.73	1.41	1.50
4	B	403	6PC	C1-C2	-6.11	1.42	1.50
4	A	404	6PC	C3-N2	2.42	1.39	1.34
4	B	403	6PC	C3-N2	2.33	1.39	1.34

The worst 5 of 6 bond angle outliers are listed below:

Mol	Chain	Res	Type	Atoms	Z	Observed(°)	Ideal(°)
4	B	403	6PC	C3-N2-C1	2.85	120.62	116.93
4	B	403	6PC	O2-C2-C1	2.75	120.94	114.69
4	A	404	6PC	O2-C2-C1	2.22	119.73	114.69
3	B	402	ACT	OXT-C-CH3	2.20	124.28	115.18
4	B	403	6PC	O2-C2-O1	-2.08	118.73	123.35

There are no chirality outliers.

There are no torsion outliers.

There are no ring outliers.

No monomer is involved in short contacts.

5.7 Other polymers

There are no such residues in this entry.

5.8 Polymer linkage issues

There are no chain breaks in this entry.

6 Fit of model and data [i](#)

6.1 Protein, DNA and RNA chains [i](#)

In the following table, the column labelled ‘#RSRZ> 2’ contains the number (and percentage) of RSRZ outliers, followed by percent RSRZ outliers for the chain as percentile scores relative to all X-ray entries and entries of similar resolution. The OWAB column contains the minimum, median, 95th percentile and maximum values of the occupancy-weighted average B-factor per residue. The column labelled ‘Q< 0.9’ lists the number of (and percentage) of residues with an average occupancy less than 0.9.

Mol	Chain	Analysed	<RSRZ>	#RSRZ>2	OWAB(Å ²)	Q<0.9
1	A	344/385 (89%)	-0.28	6 (1%) 70 69	16, 27, 48, 66	0
1	B	343/385 (89%)	-0.42	1 (0%) 94 93	16, 24, 43, 65	0
All	All	687/770 (89%)	-0.35	7 (1%) 82 82	16, 25, 47, 66	0

The worst 5 of 7 RSRZ outliers are listed below:

Mol	Chain	Res	Type	RSRZ
1	A	373	TYR	4.6
1	A	372	LEU	4.2
1	A	30	ALA	3.0
1	B	374	PHE	3.0
1	A	35	ARG	2.5

6.2 Non-standard residues in protein, DNA, RNA chains [i](#)

There are no non-standard protein/DNA/RNA residues in this entry.

6.3 Carbohydrates [i](#)

There are no monosaccharides in this entry.

6.4 Ligands [i](#)

In the following table, the Atoms column lists the number of modelled atoms in the group and the number defined in the chemical component dictionary. The B-factors column lists the minimum, median, 95th percentile and maximum values of B factors of atoms in the group. The column labelled ‘Q< 0.9’ lists the number of atoms with occupancy less than 0.9.

Mol	Type	Chain	Res	Atoms	RSCC	RSR	B-factors(\AA^2)	Q<0.9
5	IMD	A	405	5/5	0.41	0.23	56,63,72,75	0
3	ACT	A	403	4/4	0.51	0.26	54,64,69,69	0
3	ACT	A	402	4/4	0.96	0.12	33,35,40,40	0
4	6PC	B	403	9/9	0.97	0.13	16,17,18,18	0
3	ACT	B	402	4/4	0.97	0.07	27,28,33,33	0
4	6PC	A	404	9/9	0.98	0.09	16,20,22,23	0
2	CA	A	401	1/1	1.00	0.06	18,18,18,18	0
2	CA	B	401	1/1	1.00	0.07	15,15,15,15	0

6.5 Other polymers [i](#)

There are no such residues in this entry.