



## wwPDB EM Validation Summary Report ⓘ

Oct 17, 2022 – 06:34 PM JST

PDB ID : 7YER  
EMDB ID : EMD-33775  
Title : The structure of EBOV L-VP35 complex  
Authors : Shi, Y.; Yuan, B.; Peng, Q.  
Deposited on : 2022-07-06  
Resolution : 3.00 Å(reported)

This is a wwPDB EM Validation Summary Report for a publicly released PDB entry.

We welcome your comments at [validation@mail.wwpdb.org](mailto:validation@mail.wwpdb.org)

A user guide is available at

<https://www.wwpdb.org/validation/2017/EMValidationReportHelp>

with specific help available everywhere you see the ⓘ symbol.

The types of validation reports are described at

<http://www.wwpdb.org/validation/2017/FAQs#types>.

---

The following versions of software and data (see [references ⓘ](#)) were used in the production of this report:

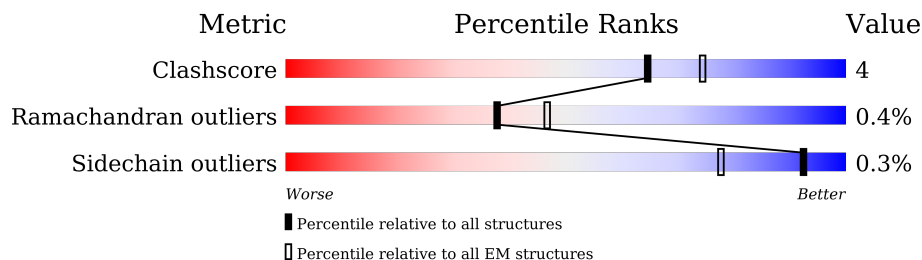
EMDB validation analysis : 0.0.1.dev43  
MolProbity : 4.02b-467  
Percentile statistics : 20191225.v01 (using entries in the PDB archive December 25th 2019)  
MapQ : 1.9.9  
Ideal geometry (proteins) : Engh & Huber (2001)  
Ideal geometry (DNA, RNA) : Parkinson et al. (1996)  
Validation Pipeline (wwPDB-VP) : 2.31.2

# 1 Overall quality at a glance

The following experimental techniques were used to determine the structure:  
*ELECTRON MICROSCOPY*

The reported resolution of this entry is 3.00 Å.

Percentile scores (ranging between 0-100) for global validation metrics of the entry are shown in the following graphic. The table shows the number of entries on which the scores are based.



Metric	Whole archive (#Entries)	EM structures (#Entries)
Clashscore	158937	4297
Ramachandran outliers	154571	4023
Sidechain outliers	154315	3826

The table below summarises the geometric issues observed across the polymeric chains and their fit to the map. The red, orange, yellow and green segments of the bar indicate the fraction of residues that contain outliers for  $\geq 3$ , 2, 1 and 0 types of geometric quality criteria respectively. A grey segment represents the fraction of residues that are not modelled. The numeric value for each fraction is indicated below the corresponding segment, with a dot representing fractions  $\leq 5\%$ . The upper red bar (where present) indicates the fraction of residues that have poor fit to the EM map (all-atom inclusion  $< 40\%$ ). The numeric value is given above the bar.

Mol	Chain	Length	Quality of chain
1	A	2212	
2	B	340	
2	C	340	
2	D	340	
2	E	340	

## 2 Entry composition

There are 3 unique types of molecules in this entry. The entry contains 14313 atoms, of which 0 are hydrogens and 0 are deuteriums.

In the tables below, the AltConf column contains the number of residues with at least one atom in alternate conformation and the Trace column contains the number of residues modelled with at most 2 atoms.

- Molecule 1 is a protein called RNA-directed RNA polymerase L.

Mol	Chain	Residues	Atoms					AltConf	Trace
			Total	C	N	O	S		
1	A	1316	10540	6780	1778	1926	56	0	0

There is a discrepancy between the modelled and reference sequences:

Chain	Residue	Modelled	Actual	Comment	Reference
A	759	ASP	GLY	engineered mutation	UNP A0A1C4HDB0

- Molecule 2 is a protein called Polymerase cofactor VP35.

Mol	Chain	Residues	Atoms					AltConf	Trace
			Total	C	N	O	S		
2	B	260	2011	1259	346	396	10	4	0
2	C	99	733	458	118	153	4	0	0
2	D	68	515	323	81	107	4	0	0
2	E	67	513	320	85	105	3	0	0

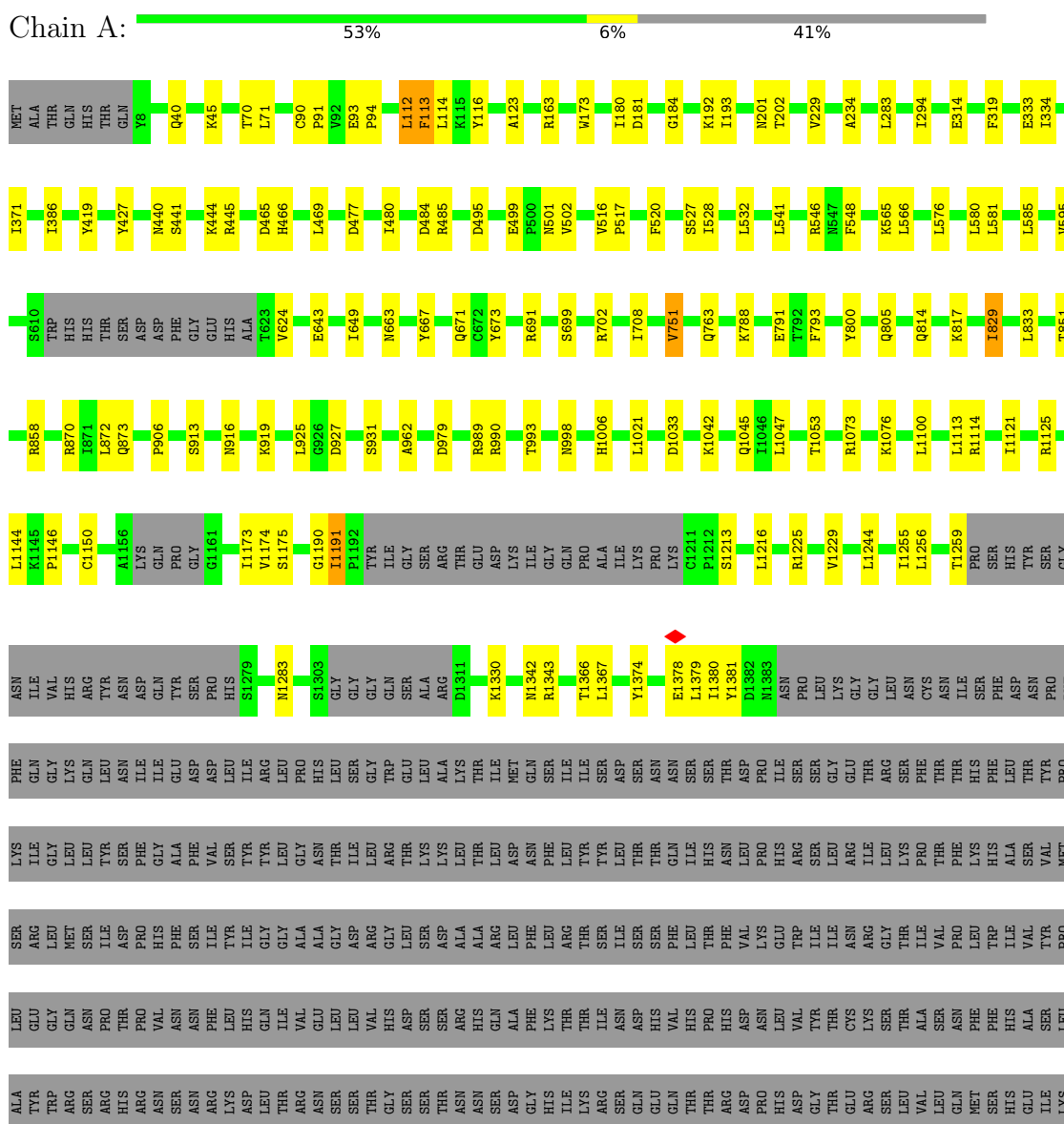
- Molecule 3 is ZINC ION (three-letter code: ZN) (formula: Zn) (labeled as "Ligand of Interest" by depositor).

Mol	Chain	Residues	Atoms		AltConf
3	A	1	Total	Zn	0
			1	1	

### 3 Residue-property plots

These plots are drawn for all protein, RNA, DNA and oligosaccharide chains in the entry. The first graphic for a chain summarises the proportions of the various outlier classes displayed in the second graphic. The second graphic shows the sequence view annotated by issues in geometry and atom inclusion in map density. Residues are color-coded according to the number of geometric quality criteria for which they contain at least one outlier: green = 0, yellow = 1, orange = 2 and red = 3 or more. A red diamond above a residue indicates a poor fit to the EM map for this residue (all-atom inclusion < 40%). Stretches of 2 or more consecutive residues without any outlier are shown as a green connector. Residues present in the sample, but not in the model, are shown in grey.

#### • Molecule 1: RNA-directed RNA polymerase L





PRO VAL  
THR THR  
ARG ARG  
SER SER  
LYS LYS  
ILE ILE  
ASP ASP  
ARG ARG  
GLY GLY  
TRP TRP  
VAL VAL  
CYS CYS  
VAL VAL  
PHE PHE  
GLN GLN  
LEU LEU  
GLN GLN  
ASP ASP  
MET MET  
GLY GLY  
LYS LYS  
THR THR  
LEU LEU  
GLY GLY  
LEU LEU  
LYS LYS  
ILE ILE

● Molecule 2: Polymerase cofactor VP35



MET THR  
THR THR  
ARG ARG  
THR THR  
LYS LYS  
GLY GLY  
ARG ARG  
GLY GLY  
HIS HIS  
THR THR  
VAL VAL  
ALA ALA  
THR THR  
THR THR  
GLN GLN  
PHE PHE  
ASN ASN  
LEU LEU  
ASP ASP  
MET MET  
PRO PRO  
GLY GLY  
LYS LYS  
THR THR  
LEU LEU  
SER SER  
GLY GLY  
LEU LEU  
LYS LYS  
ILE ILE

GLN THR  
THR LYS  
LYS PRO  
ASN ASN  
PRO PRO  
LYS LYS  
MET MET  
ARG ARG  
ASN ASN  
SER SER  
THR THR  
VAL VAL  
GLN GLN  
THR THR  
ASP ASP  
LEU LEU  
ILE ILE  
CYS CYS  
ASN ASN  
HIS HIS  
SS2 F83  
L93  
L107  
P120  
V121  
M132  
R135  
V134  
T149  
GLY ARG  
ALA ALA  
THR THR  
VAL VAL  
ASN ASN  
PHE PHE  
ALA ALA  
THR THR  
LYS LYS  
ILE ILE  
ALA ALA  
TVR TVR  
ASN ASN  
PRO PRO  
GLY GLY  
LEU LEU  
CYS CYS  
THR THR  
PRO PRO  
ALA ALA  
SER SER  
GLN GLN  
MET MET  
TYR TYR  
PRO PRO  
PRO PRO  
PRO PRO

SER LEU  
TYR TYR  
GLU GLU  
SER SER  
SER SER  
ALA ALA  
ILE ILE  
ARG ARG  
GLN GLN  
LEU LEU  
VAL VAL  
GLY GLY  
ASN ASN  
THR THR  
ILE ILE  
GLU GLU  
VAL VAL  
PRO PRO  
GLN GLN  
HIS HIS  
PHE PHE  
ALA ALA  
ASN ASN  
SER SER  
THR THR  
LEU LEU  
ASP ASP  
SER SER  
THR THR  
LEU LEU  
THR THR  
GLU GLU  
GLU GLU  
ASN ASN  
PHE PHE  
LYS LYS  
PRO PRO  
ALA ALA  
ASP ASP  
ILE ILE  
SER SER  
ILE ILE  
SER SER  
ALA ALA  
TVR TVR  
ASP ASP  
HIS HIS  
MET MET  
PRO PRO

GLY PHE  
PHE PHE  
THR THR  
ALA ALA  
SER SER  
HIS HIS  
GLN GLN  
LEU LEU  
VAL VAL  
VAL VAL  
GLN GLN  
CYS CYS  
LYS LYS  
LEU LEU  
GLY GLY  
ASN ASN  
ASP ASP  
VAL VAL  
PRO PRO  
GLN GLN  
ASN ASN  
HIS HIS  
PHE PHE  
ALA ALA  
THR THR  
LEU LEU  
SER SER  
THR THR  
LEU LEU  
ASP ASP  
SER SER  
THR THR  
LEU LEU  
GLN GLN  
VAL VAL  
PHE PHE  
LYS LYS  
ILE ILE  
SER SER  
THR THR  
LEU LEU  
GLY GLY  
ASP ASP  
SER SER  
PRO PRO  
GLN GLN  
PHE PHE  
LYS LYS  
ILE ILE  
SER SER  
THR THR  
LEU LEU  
LEU LEU  
ILE ILE

VAL ILE  
HIS HIS  
ILE ILE  
SER SER  
ARG ARG  
SER SER  
GLY GLY  
ASP ASP  
ILE ILE  
VAL VAL  
PRO PRO  
GLN GLN  
VAL VAL  
ALA ALA  
CYS CYS  
GLN GLN  
LEU LEU  
GLY GLY  
SER SER  
ILE ILE  
ASP ASP  
VAL VAL  
PRO PRO  
GLN GLN  
ASN ASN  
HIS HIS  
PHE PHE  
ALA ALA  
THR THR  
LEU LEU  
SER SER  
THR THR  
LEU LEU  
GLN GLN  
VAL VAL  
ASP ASP  
SER SER  
THR THR  
LEU LEU  
PHE PHE  
ALA ALA  
CYS CYS  
TRP TRP  
VAL VAL  
CYS CYS  
SER SER  
VAL VAL  
PHE PHE  
LEU LEU  
GLY GLY  
GLN GLN  
ALA ALA  
SER SER  
THR THR  
LEU LEU  
GLN GLN  
ASP ASP  
SER SER  
PRO PRO  
GLY GLY  
PHE PHE  
LYS LYS  
ILE ILE

● Molecule 2: Polymerase cofactor VP35



MET THR  
THR THR  
ARG ARG  
THR THR  
LYS LYS  
GLY GLY  
ARG ARG  
GLY GLY  
HIS HIS  
THR THR  
VAL VAL  
ALA ALA  
THR THR  
THR THR  
THR THR  
ASN ASN  
PRO PRO  
ILE ILE  
ASP ASP  
MET MET  
PRO PRO  
GLY GLY  
LEU LEU  
GLU GLU  
SER SER  
LEU LEU  
THR THR  
TRP TRP  
ILE ILE  
SER SER  
GLY GLY  
GLU GLU  
GLN GLN  
LEU LEU  
LEU LEU  
MET MET  
THR THR  
THR THR  
ARG ARG  
ILE ILE  
PRO PRO  
VAL VAL  
ASN ASN  
PHE PHE  
LYS LYS  
THR THR  
LEU LEU  
CYS CYS  
PHE PHE  
THR THR  
GLY GLY

GLN THR  
THR LYS  
LYS PRO  
ASN ASN  
PRO PRO  
LYS LYS  
MET MET  
ARG ARG  
ASN ASN  
SER SER  
THR THR  
GLN GLN  
THR THR  
THR THR  
ASP ASP  
PRO PRO  
ILE ILE  
LYS LYS  
ILE ILE  
CYS CYS  
N80  
L93  
L107  
E108  
Q109  
V121  
Y122  
S130  
L131  
V134  
M138  
V139  
L145  
V146  
MET THR  
THR THR  
GLY GLY  
ARG ARG  
ALA ALA  
THR THR  
ALA ALA  
THR THR  
ALA ALA  
THR THR  
GLU GLU  
LEU LEU  
ASN ASN  
PRO PRO  
ALA ALA  
TYR TYR  
ALA ALA  
CYS CYS  
THR THR  
TYR TYR  
SER SER  
GLN GLN  
MET MET  
GLU GLU  
HIS HIS

GLY GLN  
PRO PRO  
PRO PRO  
PRO PRO  
PRO PRO  
SER SER  
THR THR  
TYR TYR  
GLU GLU  
ALA ALA  
SER SER  
ALA ALA  
THR THR  
THR THR  
GLY GLY  
LYS LYS  
VAL VAL  
GLU GLU  
ILE ILE  
SER SER  
THR THR  
VAL VAL  
PRO PRO  
GLN GLN  
CYS CYS  
SER SER  
LEU LEU  
ASP ASP  
THR THR  
VAL VAL  
PHE PHE  
ASN ASN  
SER SER  
THR THR  
LEU LEU  
ASP ASP  
SER SER  
THR THR  
THR THR  
GLY GLY  
GLU GLU  
THR THR  
LEU LEU  
SER SER  
PHE PHE  
GLN GLN  
ALA ALA  
SER SER  
THR THR  
THR THR  
LEU LEU  
ASP ASP  
GLY GLY  
THR THR  
PHE PHE  
GLN GLN  
VAL VAL  
PHE PHE  
GLY GLY  
TRP TRP  
VAL VAL  
CYS CYS  
SER SER  
THR THR  
VAL VAL  
LEU LEU  
GLN GLN  
SER SER  
THR THR  
LEU LEU  
GLY GLY  
THR THR  
PHE PHE  
LYS LYS  
ILE ILE

ILE MET  
TYR TYR  
ASP ASP  
HIS HIS  
PRO PRO  
PRO PRO  
VAL VAL  
PHE PHE  
ILE ILE  
GLY GLY  
THR THR  
ALA ALA  
SER SER  
HIS HIS  
GLN GLN  
LEU LEU  
VAL VAL  
GLY GLY  
THR THR  
ILE ILE  
VAL VAL  
ARG ARG  
ALA ALA  
CYS CYS  
GLN GLN  
LYS LYS  
SER SER  
THR THR  
VAL VAL  
PHE PHE  
ASN ASN  
SER SER  
THR THR  
LEU LEU  
ILE ILE  
HIS HIS  
GLU GLU  
PHE PHE  
GLN GLN  
ALA ALA  
SER SER  
THR THR  
LEU LEU  
ASP ASP  
SER SER  
THR THR  
THR THR  
GLY GLY  
THR THR  
PHE PHE  
GLN GLN  
VAL VAL  
PHE PHE  
LYS LYS  
ILE ILE

PHE GLN  
ASP ASP  
ALA ALA  
PRO PRO  
PRO PRO  
VAL VAL  
ILE ILE  
HIS HIS  
ILE ILE  
ARG ARG  
SER SER  
ARG ARG  
GLY GLY  
ILE ILE  
PRO PRO  
ARG ARG  
ALA ALA  
CYS CYS  
GLN GLN  
LYS LYS  
SER SER  
THR THR  
VAL VAL  
PHE PHE  
ASN ASN  
SER SER  
THR THR  
LEU LEU  
TRP TRP  
VAL VAL  
CYS CYS  
SER SER  
THR THR  
VAL VAL  
LEU LEU  
GLN GLN  
SER SER  
THR THR  
LEU LEU  
GLY GLY  
THR THR  
PHE PHE  
LYS LYS  
ILE ILE

## 4 Experimental information

Property	Value	Source
EM reconstruction method	SINGLE PARTICLE	Depositor
Imposed symmetry	POINT, Not provided	
Number of particles used	1083293	Depositor
Resolution determination method	FSC 0.143 CUT-OFF	Depositor
CTF correction method	PHASE FLIPPING AND AMPLITUDE CORRECTION	Depositor
Microscope	FEI TITAN KRIOS	Depositor
Voltage (kV)	300	Depositor
Electron dose ( $e^-/\text{\AA}^2$ )	30	Depositor
Minimum defocus (nm)	1500	Depositor
Maximum defocus (nm)	2600	Depositor
Magnification	Not provided	
Image detector	GATAN K3 (6k x 4k)	Depositor
Maximum map value	0.271	Depositor
Minimum map value	-0.164	Depositor
Average map value	0.000	Depositor
Map value standard deviation	0.005	Depositor
Recommended contour level	0.0064	Depositor
Map size (Å)	273.92, 273.92, 273.92	wwPDB
Map dimensions	256, 256, 256	wwPDB
Map angles (°)	90.0, 90.0, 90.0	wwPDB
Pixel spacing (Å)	1.07, 1.07, 1.07	Depositor

## 5 Model quality [i](#)

### 5.1 Standard geometry [i](#)

Bond lengths and bond angles in the following residue types are not validated in this section:  
ZN

The Z score for a bond length (or angle) is the number of standard deviations the observed value is removed from the expected value. A bond length (or angle) with  $|Z| > 5$  is considered an outlier worth inspection. RMSZ is the root-mean-square of all Z scores of the bond lengths (or angles).

Mol	Chain	Bond lengths		Bond angles	
		RMSZ	# Z  >5	RMSZ	# Z  >5
1	A	0.25	0/10795	0.48	0/14657
2	B	0.24	0/2050	0.44	0/2789
2	C	0.24	0/746	0.42	0/1022
2	D	0.23	0/518	0.39	0/703
2	E	0.25	0/517	0.44	0/702
All	All	0.25	0/14626	0.47	0/19873

There are no bond length outliers.

There are no bond angle outliers.

There are no chirality outliers.

There are no planarity outliers.

### 5.2 Too-close contacts [i](#)

In the following table, the Non-H and H(model) columns list the number of non-hydrogen atoms and hydrogen atoms in the chain respectively. The H(added) column lists the number of hydrogen atoms added and optimized by MolProbity. The Clashes column lists the number of clashes within the asymmetric unit, whereas Symm-Clashes lists symmetry-related clashes.

Mol	Chain	Non-H	H(model)	H(added)	Clashes	Symm-Clashes
1	A	10540	0	10521	89	0
2	B	2011	0	1980	23	0
2	C	733	0	698	9	0
2	D	515	0	525	7	0
2	E	513	0	515	11	0
3	A	1	0	0	0	0
All	All	14313	0	14239	121	0

The all-atom clashscore is defined as the number of clashes found per 1000 atoms (including



hydrogen atoms). The all-atom clashscore for this structure is 4.

The worst 5 of 121 close contacts within the same asymmetric unit are listed below, sorted by their clash magnitude.

Atom-1	Atom-2	Interatomic distance (Å)	Clash overlap (Å)
1:A:70:THR:HG23	1:A:229:VAL:O	1.59	1.02
1:A:114:LEU:HD22	1:A:858:ARG:HD3	1.59	0.82
1:A:70:THR:HG22	1:A:71:LEU:H	1.45	0.81
1:A:70:THR:HG22	1:A:71:LEU:N	1.97	0.80
2:D:121:VAL:HG22	2:E:121:VAL:HG21	1.72	0.70

There are no symmetry-related clashes.

## 5.3 Torsion angles [\(i\)](#)

### 5.3.1 Protein backbone [\(i\)](#)

In the following table, the Percentiles column shows the percent Ramachandran outliers of the chain as a percentile score with respect to all PDB entries followed by that with respect to all EM entries.

The Analysed column shows the number of residues for which the backbone conformation was analysed, and the total number of residues.

Mol	Chain	Analysed	Favoured	Allowed	Outliers	Percentiles	
1	A	1304/2212 (59%)	1200 (92%)	96 (7%)	8 (1%)	25	64
2	B	262/340 (77%)	255 (97%)	7 (3%)	0	100	100
2	C	97/340 (28%)	90 (93%)	7 (7%)	0	100	100
2	D	66/340 (19%)	64 (97%)	2 (3%)	0	100	100
2	E	65/340 (19%)	64 (98%)	1 (2%)	0	100	100
All	All	1794/3572 (50%)	1673 (93%)	113 (6%)	8 (0%)	38	72

5 of 8 Ramachandran outliers are listed below:

Mol	Chain	Res	Type
1	A	113	PHE
1	A	1191	ILE
1	A	527	SER
1	A	112	LEU
1	A	751	VAL

### 5.3.2 Protein sidechains [i](#)

In the following table, the Percentiles column shows the percent sidechain outliers of the chain as a percentile score with respect to all PDB entries followed by that with respect to all EM entries.

The Analysed column shows the number of residues for which the sidechain conformation was analysed, and the total number of residues.

Mol	Chain	Analysed	Rotameric	Outliers	Percentiles	
1	A	1174/1994 (59%)	1172 (100%)	2 (0%)	93	98
2	B	222/294 (76%)	221 (100%)	1 (0%)	88	96
2	C	78/294 (26%)	77 (99%)	1 (1%)	69	89
2	D	60/294 (20%)	60 (100%)	0	100	100
2	E	59/294 (20%)	59 (100%)	0	100	100
All	All	1593/3170 (50%)	1589 (100%)	4 (0%)	92	97

All (4) residues with a non-rotameric sidechain are listed below:

Mol	Chain	Res	Type
1	A	595	VAL
1	A	1343	ARG
2	B	298	ARG
2	C	151	ARG

Sometimes sidechains can be flipped to improve hydrogen bonding and reduce clashes. There are no such sidechains identified.

### 5.3.3 RNA [i](#)

There are no RNA molecules in this entry.

## 5.4 Non-standard residues in protein, DNA, RNA chains [i](#)

There are no non-standard protein/DNA/RNA residues in this entry.

## 5.5 Carbohydrates [i](#)

There are no monosaccharides in this entry.

## 5.6 Ligand geometry

Of 1 ligands modelled in this entry, 1 is monoatomic - leaving 0 for Mogul analysis.

There are no bond length outliers.

There are no bond angle outliers.

There are no chirality outliers.

There are no torsion outliers.

There are no ring outliers.

No monomer is involved in short contacts.

## 5.7 Other polymers

There are no such residues in this entry.

## 5.8 Polymer linkage issues

There are no chain breaks in this entry.

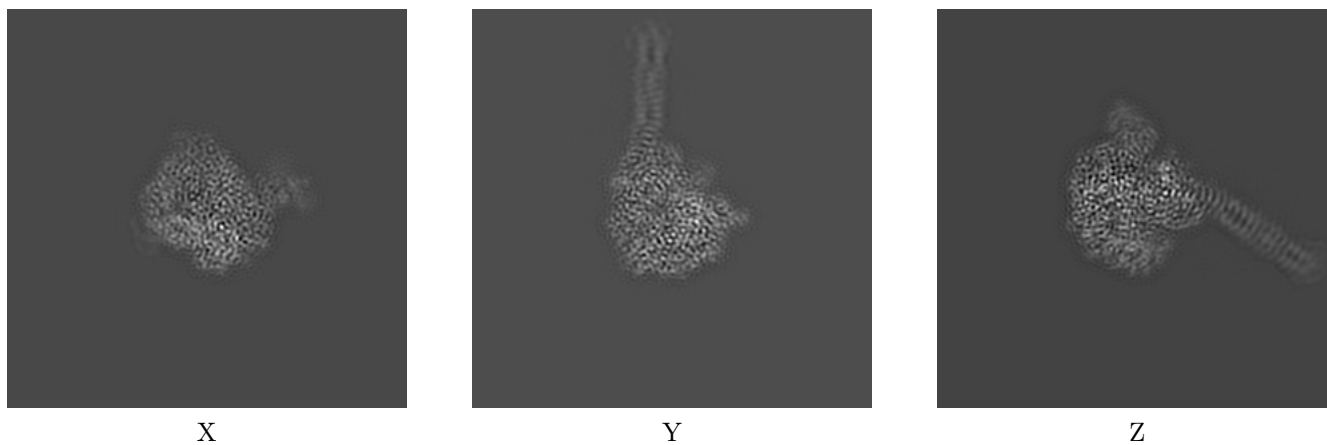
## 6 Map visualisation [i](#)

This section contains visualisations of the EMDB entry EMD-33775. These allow visual inspection of the internal detail of the map and identification of artifacts.

No raw map or half-maps were deposited for this entry and therefore no images, graphs, etc. pertaining to the raw map can be shown.

### 6.1 Orthogonal projections [i](#)

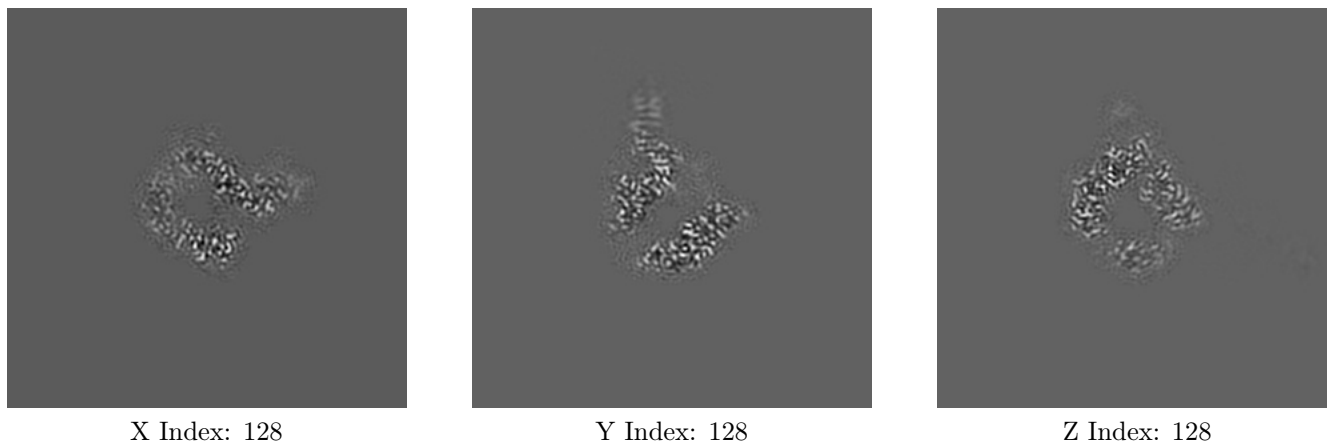
#### 6.1.1 Primary map



The images above show the map projected in three orthogonal directions.

### 6.2 Central slices [i](#)

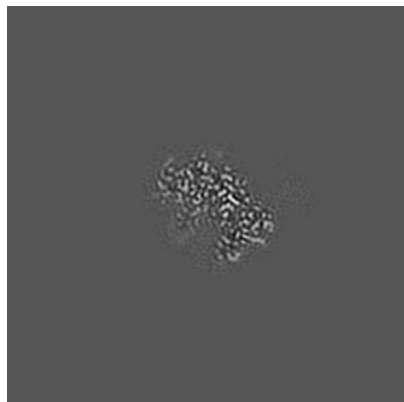
#### 6.2.1 Primary map



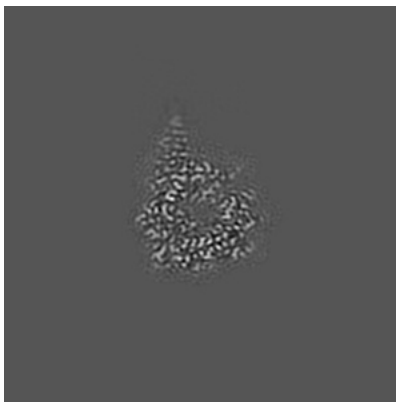
The images above show central slices of the map in three orthogonal directions.

## 6.3 Largest variance slices [i](#)

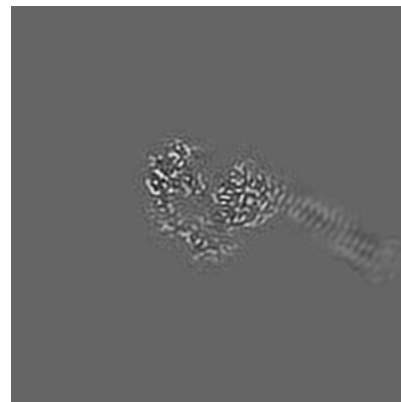
### 6.3.1 Primary map



X Index: 106



Y Index: 138



Z Index: 115

The images above show the largest variance slices of the map in three orthogonal directions.

## 6.4 Orthogonal surface views [i](#)

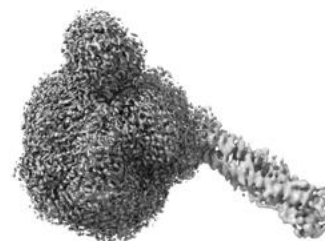
### 6.4.1 Primary map



X



Y



Z

The images above show the 3D surface view of the map at the recommended contour level 0.0064. These images, in conjunction with the slice images, may facilitate assessment of whether an appropriate contour level has been provided.

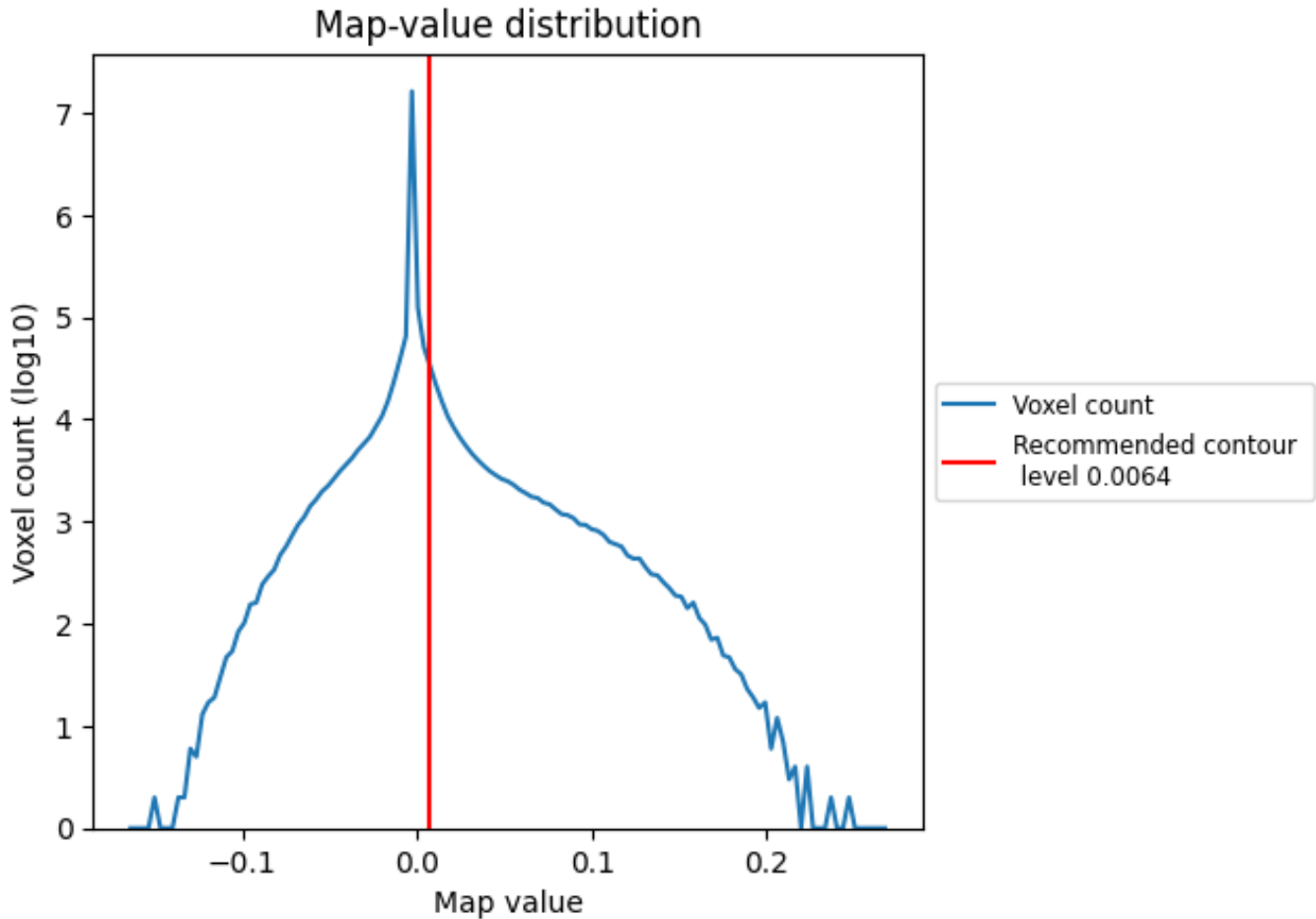
## 6.5 Mask visualisation

This section was not generated. No masks/segmentation were deposited.

## 7 Map analysis [i](#)

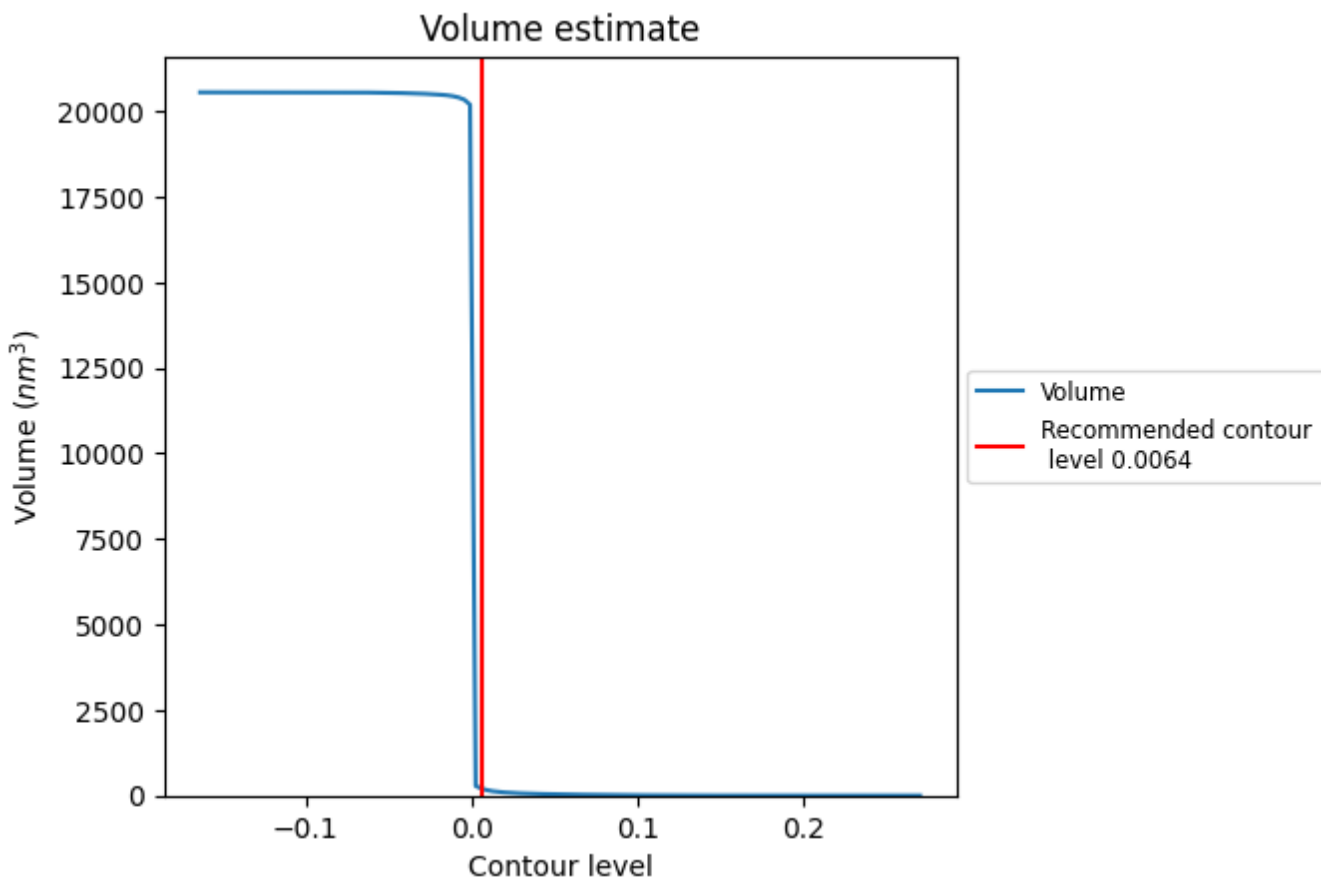
This section contains the results of statistical analysis of the map.

### 7.1 Map-value distribution [i](#)



The map-value distribution is plotted in 128 intervals along the x-axis. The y-axis is logarithmic. A spike in this graph at zero usually indicates that the volume has been masked.

## 7.2 Volume estimate [i](#)

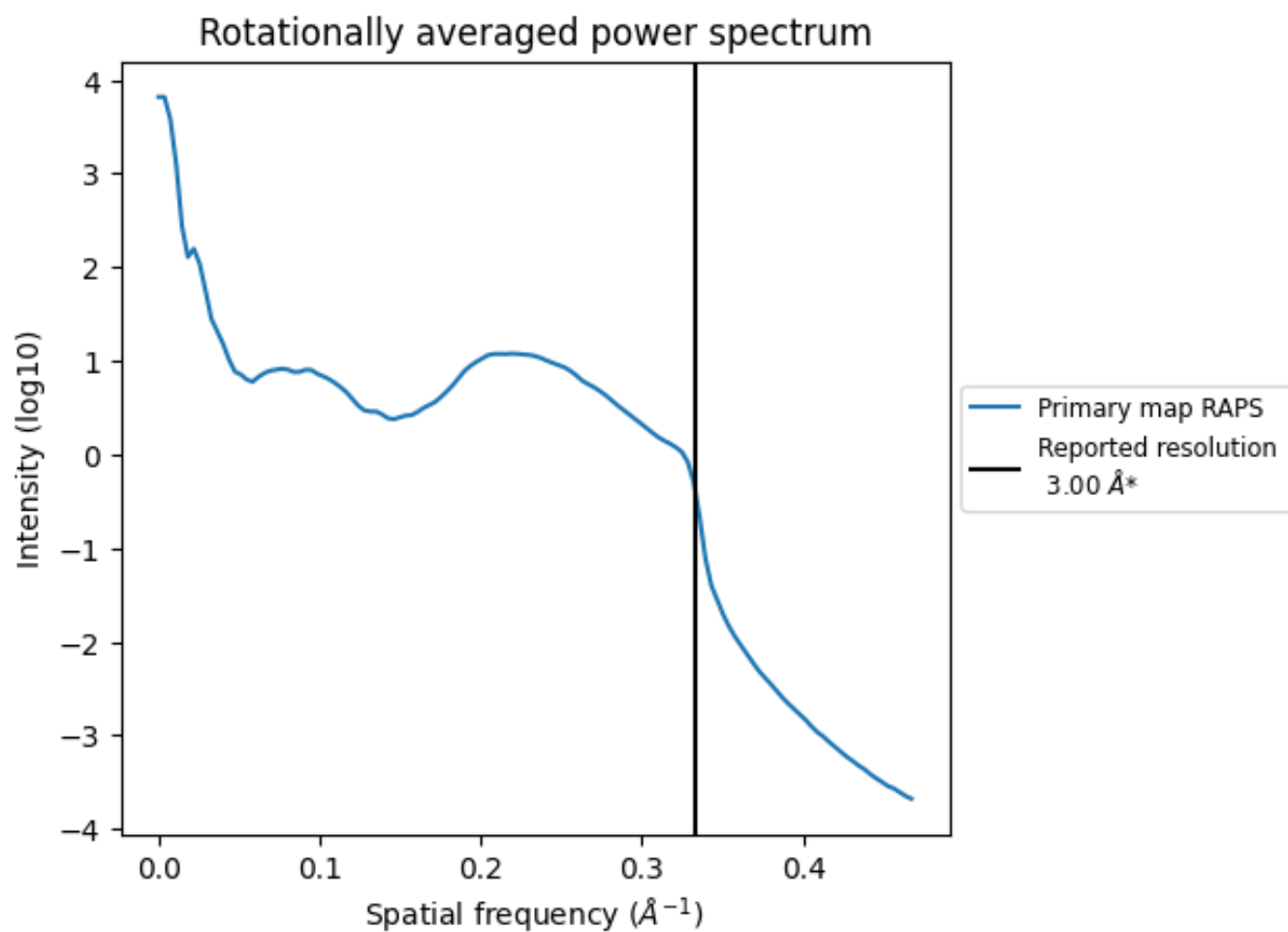


The volume at the recommended contour level is 202 nm<sup>3</sup>; this corresponds to an approximate mass of 183 kDa.

The volume estimate graph shows how the enclosed volume varies with the contour level. The recommended contour level is shown as a vertical line and the intersection between the line and the curve gives the volume of the enclosed surface at the given level.



### 7.3 Rotationally averaged power spectrum [i](#)

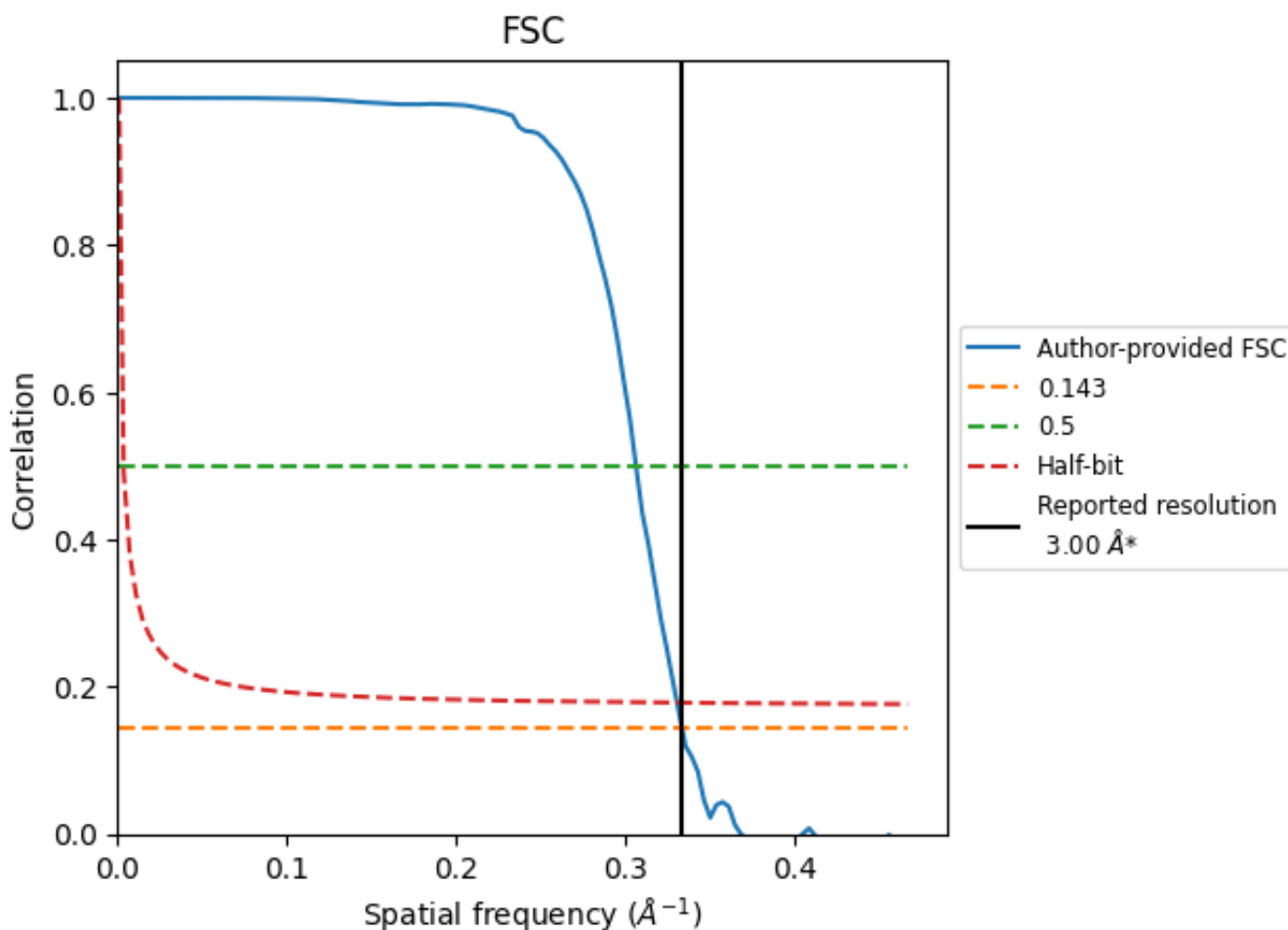


\*Reported resolution corresponds to spatial frequency of  $0.333 \text{\AA}^{-1}$

## 8 Fourier-Shell correlation [\(i\)](#)

Fourier-Shell Correlation (FSC) is the most commonly used method to estimate the resolution of single-particle and subtomogram-averaged maps. The shape of the curve depends on the imposed symmetry, mask and whether or not the two 3D reconstructions used were processed from a common reference. The reported resolution is shown as a black line. A curve is displayed for the half-bit criterion in addition to lines showing the 0.143 gold standard cut-off and 0.5 cut-off.

### 8.1 FSC [\(i\)](#)



\*Reported resolution corresponds to spatial frequency of 0.333 Å<sup>-1</sup>

## 8.2 Resolution estimates [i](#)

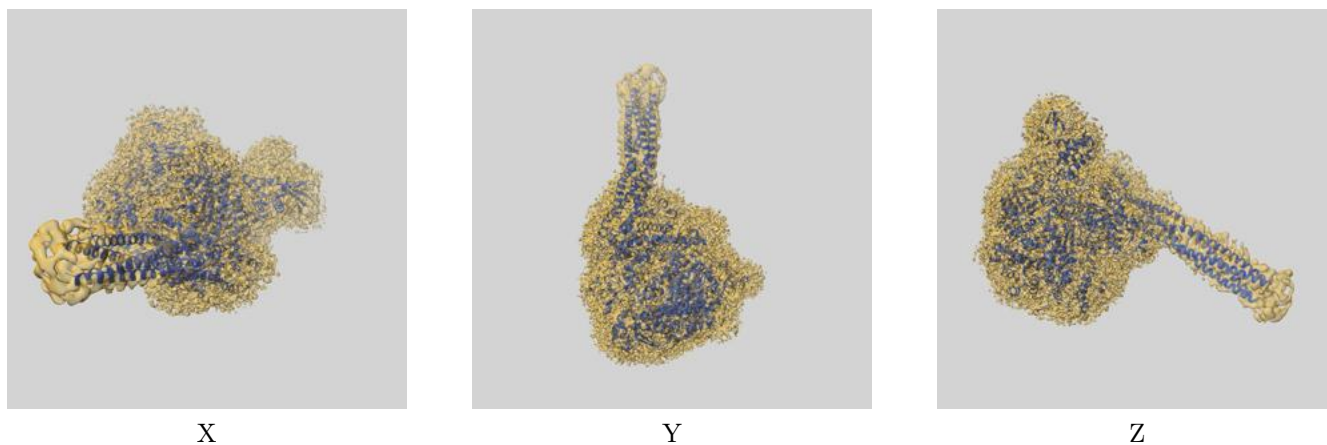
Resolution estimate (Å)	Estimation criterion (FSC cut-off)		
	0.143	0.5	Half-bit
Reported by author	3.00	-	-
Author-provided FSC curve	2.99	3.26	3.02
Unmasked-calculated*	-	-	-

\*Resolution estimate based on FSC curve calculated by comparison of deposited half-maps.

## 9 Map-model fit [i](#)

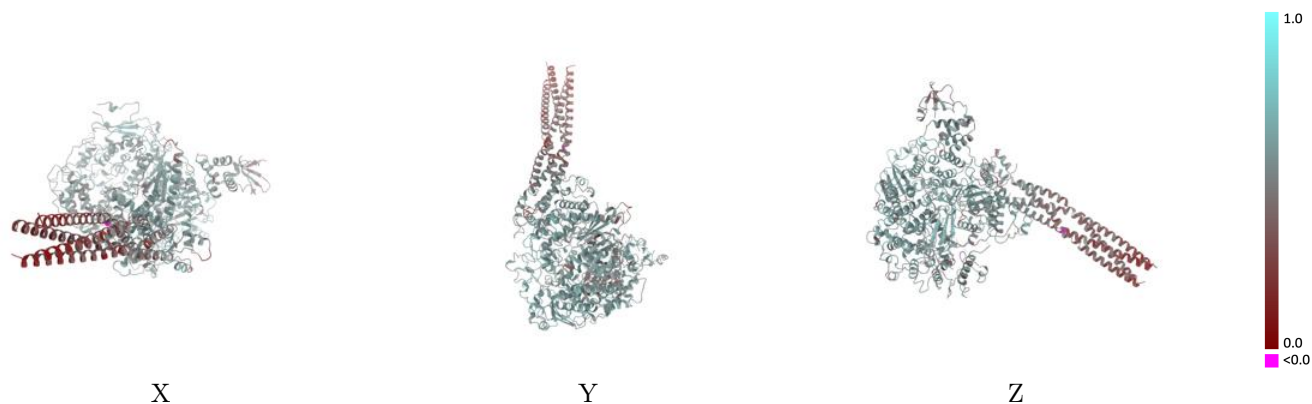
This section contains information regarding the fit between EMDB map EMD-33775 and PDB model 7YER. Per-residue inclusion information can be found in section 3 on page 4.

### 9.1 Map-model overlay [i](#)



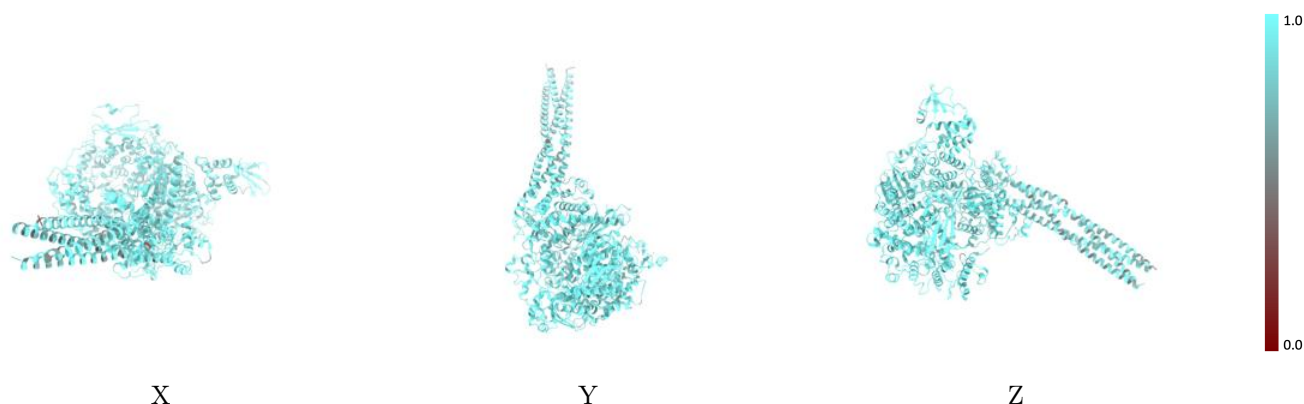
The images above show the 3D surface view of the map at the recommended contour level 0.0064 at 50% transparency in yellow overlaid with a ribbon representation of the model coloured in blue. These images allow for the visual assessment of the quality of fit between the atomic model and the map.

## 9.2 Q-score mapped to coordinate model [i](#)



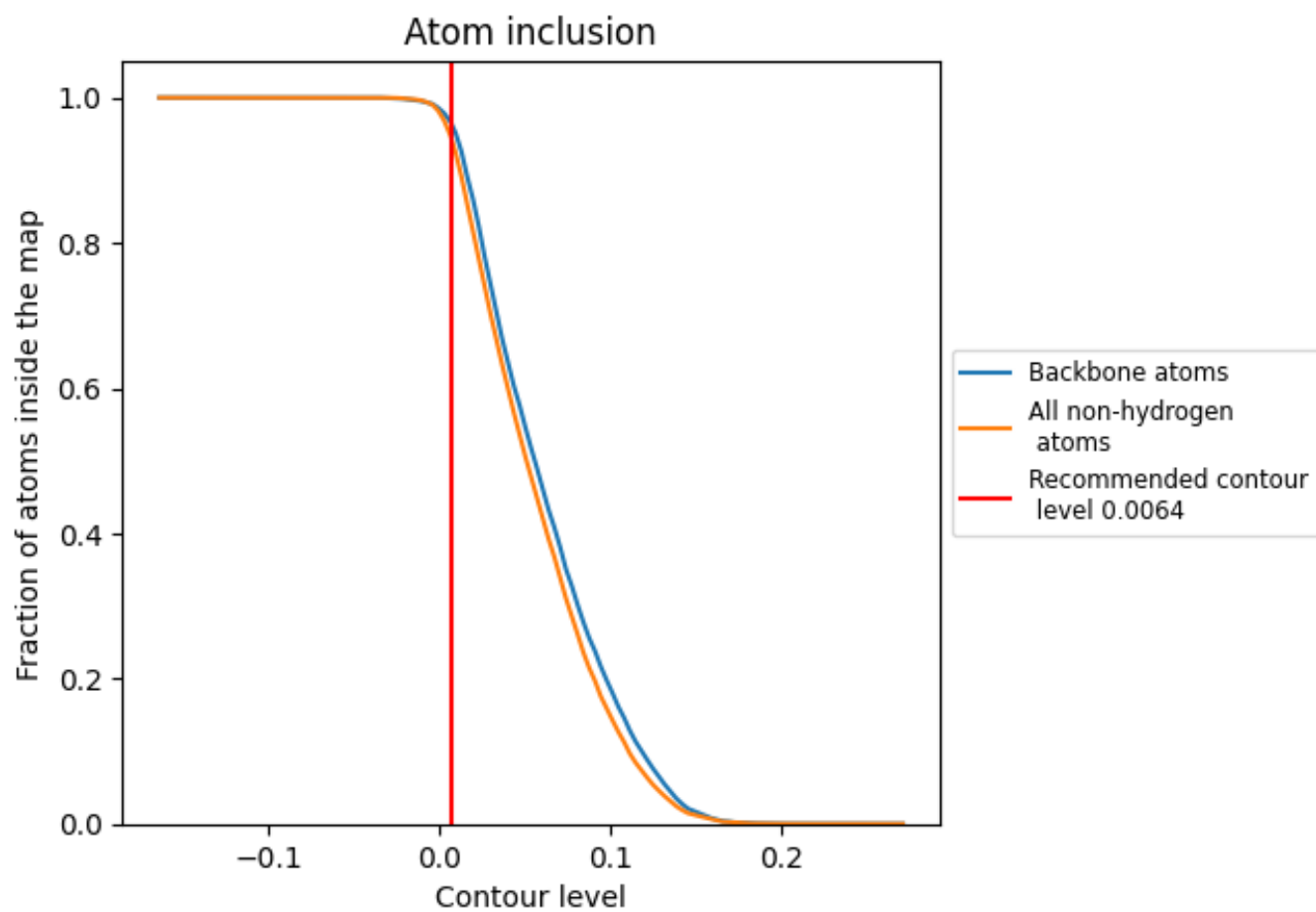
The images above show the model with each residue coloured according to its Q-score. This shows their resolvability in the map with higher Q-score values reflecting better resolvability. Please note: Q-score is calculating the resolvability of atoms, and thus high values are only expected at resolutions at which atoms can be resolved. Low Q-score values may therefore be expected for many entries.

## 9.3 Atom inclusion mapped to coordinate model [i](#)



The images above show the model with each residue coloured according to its atom inclusion. This shows to what extent they are inside the map at the recommended contour level (0.0064).













## 9.4 Atom inclusion [i](#)



At the recommended contour level, 97% of all backbone atoms, 95% of all non-hydrogen atoms, are inside the map.

## 9.5 Map-model fit summary

The table lists the average atom inclusion at the recommended contour level (0.0064) and Q-score for the entire model and for each chain.

Chain	Atom inclusion	Q-score
All	 0.9474	 0.5310
A	 0.9665	 0.5710
B	 0.9268	 0.4620
C	 0.8854	 0.4160
D	 0.8395	 0.3490
E	 0.8363	 0.3340

