



# Full wwPDB X-ray Structure Validation Report ⓘ

Sep 19, 2020 – 09:17 AM BST

PDB ID : 6YB8  
Title : Human octameric PAICS in complex with CAIR and SAICAR  
Authors : Skerlova, J.; Unterlass, J.; Gottmann, M.; Homan, E.; Helleday, T.; Jemth, A.S.; Stenmark, P.  
Deposited on : 2020-03-16  
Resolution : 2.36 Å(reported)

This is a Full wwPDB X-ray Structure Validation Report for a publicly released PDB entry.

We welcome your comments at [validation@mail.wwpdb.org](mailto:validation@mail.wwpdb.org)

A user guide is available at

<https://www.wwpdb.org/validation/2017/XrayValidationReportHelp>

with specific help available everywhere you see the ⓘ symbol.

---

The following versions of software and data (see [references ⓘ](#)) were used in the production of this report:

MolProbity : 4.02b-467  
Mogul : 1.8.5 (274361), CSD as541be (2020)  
Xtriage (Phenix) : 1.13  
EDS : 2.14.6  
buster-report : 1.1.7 (2018)  
Percentile statistics : 20191225.v01 (using entries in the PDB archive December 25th 2019)  
Refmac : 5.8.0158  
CCP4 : 7.0.044 (Gargrove)  
Ideal geometry (proteins) : Engh & Huber (2001)  
Ideal geometry (DNA, RNA) : Parkinson et al. (1996)  
Validation Pipeline (wwPDB-VP) : 2.14.6

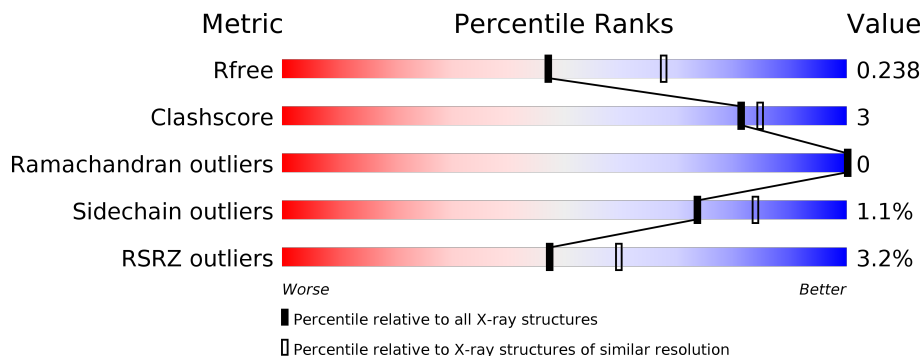
# 1 Overall quality at a glance

The following experimental techniques were used to determine the structure:

*X-RAY DIFFRACTION*

The reported resolution of this entry is 2.36 Å.

Percentile scores (ranging between 0-100) for global validation metrics of the entry are shown in the following graphic. The table shows the number of entries on which the scores are based.



Metric	Whole archive (#Entries)	Similar resolution (#Entries, resolution range(Å))
$R_{free}$	130704	1164 (2.36-2.36)
Clashscore	141614	1232 (2.36-2.36)
Ramachandran outliers	138981	1211 (2.36-2.36)
Sidechain outliers	138945	1212 (2.36-2.36)
RSRZ outliers	127900	1150 (2.36-2.36)

The table below summarises the geometric issues observed across the polymeric chains and their fit to the electron density. The red, orange, yellow and green segments on the lower bar indicate the fraction of residues that contain outliers for  $\geq 3$ , 2, 1 and 0 types of geometric quality criteria respectively. A grey segment represents the fraction of residues that are not modelled. The numeric value for each fraction is indicated below the corresponding segment, with a dot representing fractions  $\leq 5\%$ . The upper red bar (where present) indicates the fraction of residues that have poor fit to the electron density. The numeric value is given above the bar.

Mol	Chain	Length	Quality of chain
1	A	425	 91% 8%
1	B	425	 6% 94% 5%

The following table lists non-polymeric compounds, carbohydrate monomers and non-standard residues in protein, DNA, RNA chains that are outliers for geometric or electron-density-fit criteria:

Mol	Type	Chain	Res	Chirality	Geometry	Clashes	Electron density
5	EDO	B	801	-	-	X	-

## 2 Entry composition [i](#)

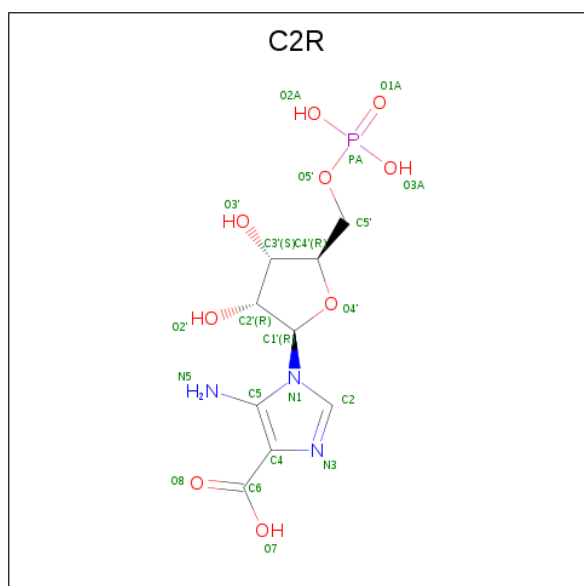
There are 6 unique types of molecules in this entry. The entry contains 7126 atoms, of which 0 are hydrogens and 0 are deuteriums.

In the tables below, the ZeroOcc column contains the number of atoms modelled with zero occupancy, the AltConf column contains the number of residues with at least one atom in alternate conformation and the Trace column contains the number of residues modelled with at most 2 atoms.

- Molecule 1 is a protein called Multifunctional protein ADE2.

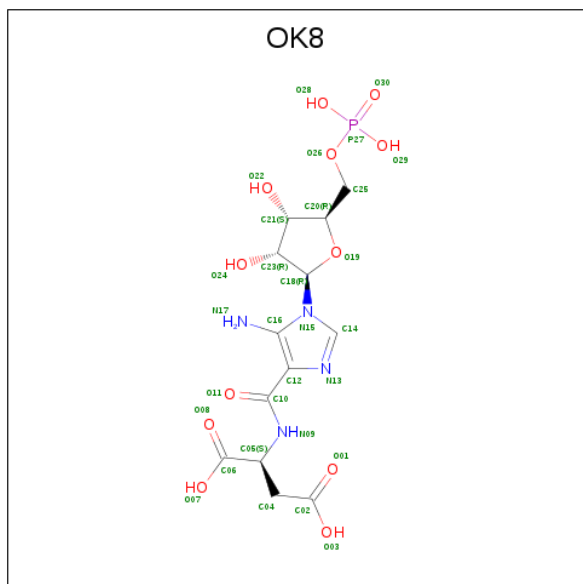
Mol	Chain	Residues	Atoms					ZeroOcc	AltConf	Trace
			Total	C	N	O	S			
1	A	419	Total 3264	C 2076	N 557	O 612	S 19	0	0	0
1	B	419	Total 3264	C 2076	N 557	O 612	S 19	0	0	0

- Molecule 2 is 5-AMINO-1-(5-O-PHOSPHONO-BETA-D-RIBOFURANOSYL)-1H-IMIDAZOLE-4-CARBOXYLIC ACID (three-letter code: C2R) (formula: C<sub>9</sub>H<sub>14</sub>N<sub>3</sub>O<sub>9</sub>P) (labeled as "Ligand of Interest" by author).



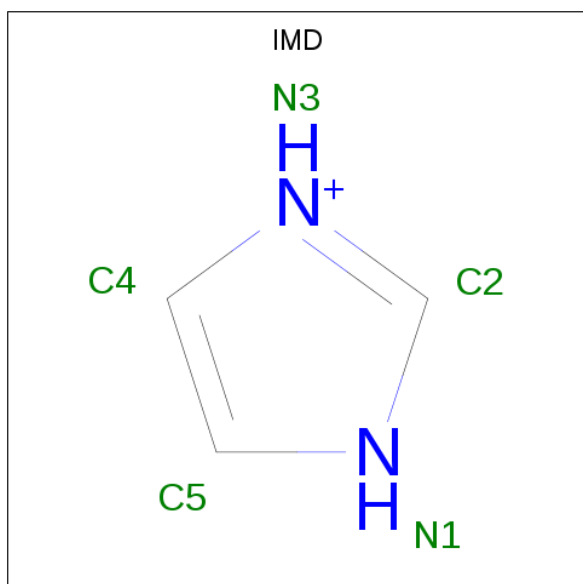
Mol	Chain	Residues	Atoms					ZeroOcc	AltConf
			Total	C	N	O	P		
2	A	1	Total 22	C 9	N 3	O 9	P 1	0	0
2	B	1	Total 22	C 9	N 3	O 9	P 1	0	0
2	B	1	Total 22	C 9	N 3	O 9	P 1	0	0

- Molecule 3 is (2 {S})-2-[[5-azanyl-1-[(2 {R},3 {R},4 {S},5 {R})-3,4-bis(oxidanyl)-5-(phosphonooxymethyl)oxolan-2-yl]imidazol-4-yl]carbonylamino]butanedioic acid (three-letter code: OK8) (formula: C<sub>13</sub>H<sub>19</sub>N<sub>4</sub>O<sub>12</sub>P) (labeled as "Ligand of Interest" by author).



Mol	Chain	Residues	Atoms				ZeroOcc	AltConf	
			Total	C	N	O			P
3	A	1	30	13	4	12	1	0	0

- Molecule 4 is IMIDAZOLE (three-letter code: IMD) (formula: C<sub>3</sub>H<sub>5</sub>N<sub>2</sub>).



Mol	Chain	Residues	Atoms			ZeroOcc	AltConf
			Total	C	N		
4	A	1	5	3	2	0	0

*Continued on next page...*

Continued from previous page...

Mol	Chain	Residues	Atoms			ZeroOcc	AltConf
			Total	C	N		
4	B	1	5	3	2	0	0

- Molecule 5 is 1,2-ETHANEDIOL (three-letter code: EDO) (formula:  $C_2H_6O_2$ ).



Mol	Chain	Residues	Atoms			ZeroOcc	AltConf
			Total	C	O		
5	A	1	4	2	2	0	0
5	A	1	4	2	2	0	0
5	A	1	4	2	2	0	0
5	A	1	4	2	2	0	0
5	B	1	4	2	2	0	0
5	B	1	4	2	2	0	0
5	B	1	4	2	2	0	0
5	B	1	4	2	2	0	0
5	B	1	4	2	2	0	0
5	B	1	4	2	2	0	0

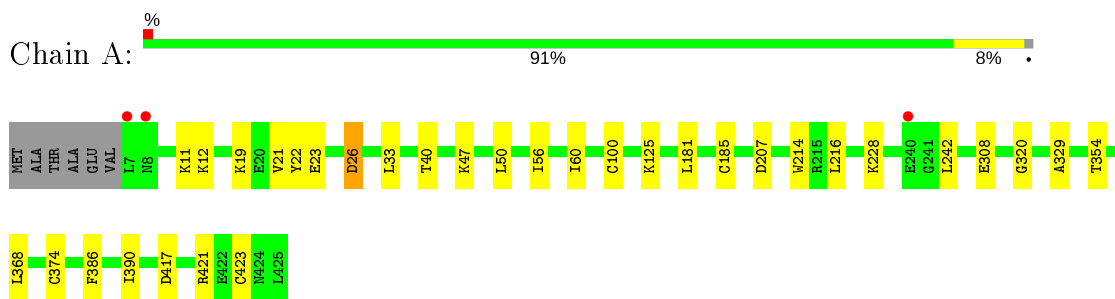
- Molecule 6 is water.

<b>Mol</b>	<b>Chain</b>	<b>Residues</b>	<b>Atoms</b>		<b>ZeroOcc</b>	<b>AltConf</b>
6	A	222	Total 222	O 222	0	0
6	B	230	Total 230	O 230	0	0

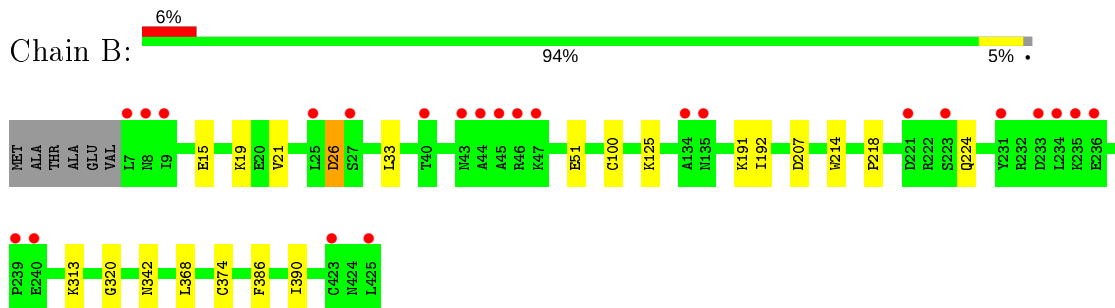
### 3 Residue-property plots [i](#)

These plots are drawn for all protein, RNA, DNA and oligosaccharide chains in the entry. The first graphic for a chain summarises the proportions of the various outlier classes displayed in the second graphic. The second graphic shows the sequence view annotated by issues in geometry and electron density. Residues are color-coded according to the number of geometric quality criteria for which they contain at least one outlier: green = 0, yellow = 1, orange = 2 and red = 3 or more. A red dot above a residue indicates a poor fit to the electron density ( $RSRZ > 2$ ). Stretches of 2 or more consecutive residues without any outlier are shown as a green connector. Residues present in the sample, but not in the model, are shown in grey.

- Molecule 1: Multifunctional protein ADE2



- Molecule 1: Multifunctional protein ADE2





## 4 Data and refinement statistics

Property	Value	Source
Space group	I 2 2 2	Depositor
Cell constants a, b, c, $\alpha$ , $\beta$ , $\gamma$	60.88Å 153.92Å 223.56Å 90.00° 90.00° 90.00°	Depositor
Resolution (Å)	47.15 – 2.36 47.15 – 2.36	Depositor EDS
% Data completeness (in resolution range)	99.8 (47.15-2.36) 99.8 (47.15-2.36)	Depositor EDS
$R_{merge}$	0.26	Depositor
$R_{sym}$	(Not available)	Depositor
$\langle I/\sigma(I) \rangle$ <sup>1</sup>	1.60 (at 2.37Å)	Xtrriage
Refinement program	REFMAC 5.8.0232	Depositor
R, $R_{free}$	0.177 , 0.235 0.184 , 0.238	Depositor DCC
$R_{free}$ test set	2177 reflections (5.00%)	wwPDB-VP
Wilson B-factor (Å <sup>2</sup> )	37.3	Xtrriage
Anisotropy	0.032	Xtrriage
Bulk solvent $k_{sol}$ (e/Å <sup>3</sup> ), $B_{sol}$ (Å <sup>2</sup> )	0.30 , 27.3	EDS
L-test for twinning <sup>2</sup>	$\langle  L  \rangle = 0.51$ , $\langle L^2 \rangle = 0.35$	Xtrriage
Estimated twinning fraction	No twinning to report.	Xtrriage
$F_o, F_c$ correlation	0.96	EDS
Total number of atoms	7126	wwPDB-VP
Average B, all atoms (Å <sup>2</sup> )	41.0	wwPDB-VP

Xtrriage's analysis on translational NCS is as follows: *The largest off-origin peak in the Patterson function is 4.18% of the height of the origin peak. No significant pseudotranslation is detected.*

<sup>1</sup>Intensities estimated from amplitudes.

<sup>2</sup>Theoretical values of  $\langle |L| \rangle$ ,  $\langle L^2 \rangle$  for acentric reflections are 0.5, 0.333 respectively for untwinned datasets, and 0.375, 0.2 for perfectly twinned datasets.

## 5 Model quality [i](#)

### 5.1 Standard geometry [i](#)

Bond lengths and bond angles in the following residue types are not validated in this section: C2R, OK8, IMD, EDO

The Z score for a bond length (or angle) is the number of standard deviations the observed value is removed from the expected value. A bond length (or angle) with  $|Z| > 5$  is considered an outlier worth inspection. RMSZ is the root-mean-square of all Z scores of the bond lengths (or angles).

Mol	Chain	Bond lengths		Bond angles	
		RMSZ	# Z  >5	RMSZ	# Z  >5
1	A	0.77	0/3331	0.87	0/4506
1	B	0.77	0/3331	0.86	0/4506
All	All	0.77	0/6662	0.87	0/9012

There are no bond length outliers.

There are no bond angle outliers.

There are no chirality outliers.

There are no planarity outliers.

### 5.2 Too-close contacts [i](#)

In the following table, the Non-H and H(model) columns list the number of non-hydrogen atoms and hydrogen atoms in the chain respectively. The H(added) column lists the number of hydrogen atoms added and optimized by MolProbity. The Clashes column lists the number of clashes within the asymmetric unit, whereas Symm-Clashes lists symmetry related clashes.

Mol	Chain	Non-H	H(model)	H(added)	Clashes	Symm-Clashes
1	A	3264	0	3295	21	0
1	B	3264	0	3295	15	0
2	A	22	0	11	1	0
2	B	44	0	22	0	0
3	A	30	0	0	1	0
4	A	5	0	5	0	0
4	B	5	0	5	1	0
5	A	16	0	24	1	0
5	B	24	0	35	6	0
6	A	222	0	0	0	0
6	B	230	0	0	2	0
All	All	7126	0	6692	35	0

The all-atom clashscore is defined as the number of clashes found per 1000 atoms (including hydrogen atoms). The all-atom clashscore for this structure is 3.

All (35) close contacts within the same asymmetric unit are listed below, sorted by their clash magnitude.

Atom-1	Atom-2	Interatomic distance (Å)	Clash overlap (Å)
1:B:320:GLY:HA2	5:B:801:EDO:H21	1.70	0.72
1:B:26:ASP:OD1	1:B:26:ASP:N	2.30	0.64
1:A:390:ILE:HG23	1:B:390:ILE:HG23	1.80	0.63
1:A:320:GLY:HA2	5:A:507:EDO:O1	2.02	0.58
1:A:185:CYS:HB3	1:A:216:LEU:HD22	1.86	0.58
1:A:228:LYS:HE2	3:A:502:OK8:O08	2.04	0.56
1:B:320:GLY:CA	5:B:801:EDO:H21	2.34	0.56
1:A:26:ASP:N	1:A:26:ASP:OD1	2.26	0.53
1:B:368:LEU:CD1	1:B:374:CYS:HB3	2.40	0.52
1:A:181:LEU:HD22	5:B:801:EDO:H12	1.93	0.51
1:A:11:LYS:HG2	1:A:23:GLU:OE1	2.12	0.50
1:A:40:THR:O	1:A:228:LYS:HE3	2.13	0.49
1:B:21:VAL:HG22	1:B:33:LEU:HG	1.94	0.49
1:B:218:PRO:HD2	1:B:224:GLN:O	2.13	0.48
1:A:50:LEU:HD13	1:A:242:LEU:HD22	1.97	0.46
1:B:191:LYS:HG2	1:B:192:ILE:N	2.31	0.46
1:B:19:LYS:HE3	1:B:207:ASP:OD1	2.15	0.46
1:A:329:ALA:HB1	2:A:501:C2R:N5	2.32	0.44
1:A:368:LEU:CD1	1:A:374:CYS:HB3	2.47	0.44
1:A:21:VAL:HG22	1:A:33:LEU:HG	1.99	0.44
1:B:33:LEU:HD11	5:B:807:EDO:H21	1.98	0.44
1:B:100:CYS:HA	1:B:125:LYS:O	2.18	0.43
1:A:12:LYS:HE2	1:A:22:TYR:OH	2.18	0.43
1:A:386:PHE:CE2	1:B:386:PHE:HE2	2.37	0.43
1:B:320:GLY:HA2	5:B:801:EDO:C2	2.43	0.43
1:A:386:PHE:HE2	1:B:386:PHE:CE2	2.36	0.42
1:A:308:GLU:HA	1:A:308:GLU:OE1	2.20	0.41
5:B:807:EDO:H12	6:B:976:HOH:O	2.20	0.41
1:A:40:THR:HG22	1:A:47:LYS:HG2	2.01	0.41
1:A:100:CYS:HA	1:A:125:LYS:O	2.20	0.41
1:A:19:LYS:HE3	1:A:207:ASP:OD1	2.20	0.41
1:A:417:ASP:O	1:A:421:ARG:HB2	2.21	0.41
1:A:56:ILE:O	1:A:60:ILE:HG13	2.21	0.41
4:B:804:IMD:H5	6:B:1101:HOH:O	2.19	0.41
1:B:313:LYS:HE2	1:B:342:ASN:HB3	2.04	0.40

There are no symmetry-related clashes.

## 5.3 Torsion angles [i](#)

### 5.3.1 Protein backbone [i](#)

In the following table, the Percentiles column shows the percent Ramachandran outliers of the chain as a percentile score with respect to all X-ray entries followed by that with respect to entries of similar resolution.

The Analysed column shows the number of residues for which the backbone conformation was analysed, and the total number of residues.

Mol	Chain	Analysed	Favoured	Allowed	Outliers	Percentiles	
1	A	417/425 (98%)	402 (96%)	15 (4%)	0	100	100
1	B	417/425 (98%)	402 (96%)	15 (4%)	0	100	100
All	All	834/850 (98%)	804 (96%)	30 (4%)	0	100	100

There are no Ramachandran outliers to report.

### 5.3.2 Protein sidechains [i](#)

In the following table, the Percentiles column shows the percent sidechain outliers of the chain as a percentile score with respect to all X-ray entries followed by that with respect to entries of similar resolution.

The Analysed column shows the number of residues for which the sidechain conformation was analysed, and the total number of residues.

Mol	Chain	Analysed	Rotameric	Outliers	Percentiles	
1	A	359/363 (99%)	355 (99%)	4 (1%)	73	84
1	B	359/363 (99%)	355 (99%)	4 (1%)	73	84
All	All	718/726 (99%)	710 (99%)	8 (1%)	73	84

All (8) residues with a non-rotameric sidechain are listed below:

Mol	Chain	Res	Type
1	A	26	ASP
1	A	214	TRP
1	A	354	THR
1	A	423	CYS
1	B	15	GLU
1	B	26	ASP
1	B	51	GLU
1	B	214	TRP

Some sidechains can be flipped to improve hydrogen bonding and reduce clashes. There are no such sidechains identified.

### 5.3.3 RNA [i](#)

There are no RNA molecules in this entry.

## 5.4 Non-standard residues in protein, DNA, RNA chains [i](#)

There are no non-standard protein/DNA/RNA residues in this entry.

## 5.5 Carbohydrates [i](#)

There are no monosaccharides in this entry.

## 5.6 Ligand geometry [i](#)

16 ligands are modelled in this entry.

In the following table, the Counts columns list the number of bonds (or angles) for which Mogul statistics could be retrieved, the number of bonds (or angles) that are observed in the model and the number of bonds (or angles) that are defined in the Chemical Component Dictionary. The Link column lists molecule types, if any, to which the group is linked. The Z score for a bond length (or angle) is the number of standard deviations the observed value is removed from the expected value. A bond length (or angle) with  $|Z| > 2$  is considered an outlier worth inspection. RMSZ is the root-mean-square of all Z scores of the bond lengths (or angles).

Mol	Type	Chain	Res	Link	Bond lengths			Bond angles		
					Counts	RMSZ	# Z  > 2	Counts	RMSZ	# Z  > 2
2	C2R	B	802	-	15,23,23	0.85	1 (6%)	19,35,35	0.86	0
2	C2R	A	501	-	15,23,23	0.82	1 (6%)	19,35,35	0.84	0
4	IMD	B	804	-	3,5,5	0.28	0	4,5,5	0.48	0
5	EDO	B	805	-	3,3,3	0.17	0	2,2,2	0.49	0
5	EDO	B	808	-	3,3,3	0.14	0	2,2,2	0.33	0
5	EDO	A	504	-	3,3,3	0.14	0	2,2,2	0.20	0
5	EDO	B	801	-	3,3,3	0.63	0	2,2,2	0.17	0
5	EDO	A	505	-	3,3,3	0.08	0	2,2,2	0.15	0
5	EDO	B	806	-	3,3,3	0.08	0	2,2,2	0.22	0
5	EDO	B	807	-	3,3,3	0.22	0	2,2,2	0.57	0
5	EDO	B	809	-	3,3,3	0.22	0	2,2,2	0.15	0
4	IMD	A	503	-	3,5,5	0.24	0	4,5,5	0.63	0
5	EDO	A	506	-	3,3,3	0.33	0	2,2,2	0.54	0

Mol	Type	Chain	Res	Link	Bond lengths			Bond angles		
					Counts	RMSZ	# Z  > 2	Counts	RMSZ	# Z  > 2
3	OK8	A	502	-	20,31,31	2.39	6 (30%)	23,46,46	3.34	9 (39%)
2	C2R	B	803	-	15,23,23	0.90	1 (6%)	19,35,35	0.89	1 (5%)
5	EDO	A	507	-	3,3,3	0.33	0	2,2,2	0.19	0

In the following table, the Chirals column lists the number of chiral outliers, the number of chiral centers analysed, the number of these observed in the model and the number defined in the Chemical Component Dictionary. Similar counts are reported in the Torsion and Rings columns. '-' means no outliers of that kind were identified.

Mol	Type	Chain	Res	Link	Chirals	Torsions	Rings
2	C2R	B	802	-	-	5/6/30/30	0/2/2/2
5	EDO	A	507	-	-	0/1/1/1	-
2	C2R	A	501	-	-	3/6/30/30	0/2/2/2
5	EDO	B	805	-	-	1/1/1/1	-
5	EDO	B	808	-	-	0/1/1/1	-
5	EDO	A	504	-	-	1/1/1/1	-
5	EDO	B	801	-	-	0/1/1/1	-
5	EDO	A	505	-	-	1/1/1/1	-
5	EDO	B	806	-	-	1/1/1/1	-
5	EDO	B	807	-	-	1/1/1/1	-
5	EDO	B	809	-	-	1/1/1/1	-
4	IMD	A	503	-	-	-	0/1/1/1
4	IMD	B	804	-	-	-	0/1/1/1
5	EDO	A	506	-	-	1/1/1/1	-
3	OK8	A	502	-	-	6/12/42/42	0/2/2/2
2	C2R	B	803	-	-	0/6/30/30	0/2/2/2

All (9) bond length outliers are listed below:

Mol	Chain	Res	Type	Atoms	Z	Observed(Å)	Ideal(Å)
3	A	502	OK8	P27-O26	5.78	1.78	1.60
3	A	502	OK8	C12-C10	-4.86	1.43	1.50
3	A	502	OK8	C14-N13	-3.84	1.28	1.35
3	A	502	OK8	O19-C20	-3.25	1.37	1.45
3	A	502	OK8	C21-C20	3.23	1.61	1.53
3	A	502	OK8	O26-C25	-2.48	1.35	1.44
2	B	803	C2R	C2-N3	-2.22	1.31	1.35
2	B	802	C2R	C2-N3	-2.22	1.31	1.35
2	A	501	C2R	C2-N3	-2.01	1.31	1.35

All (10) bond angle outliers are listed below:

Mol	Chain	Res	Type	Atoms	Z	Observed(°)	Ideal(°)
3	A	502	OK8	C05-N09-C10	13.02	139.12	122.34
3	A	502	OK8	O19-C18-C23	3.71	112.35	106.93
3	A	502	OK8	O11-C10-N09	3.38	128.66	122.45
3	A	502	OK8	O29-P27-O28	3.37	120.52	107.64
3	A	502	OK8	C21-C23-C18	-3.32	95.98	100.98
3	A	502	OK8	C04-C05-N09	3.24	114.90	109.01
3	A	502	OK8	O26-P27-O30	-2.66	99.02	106.47
3	A	502	OK8	C14-N13-C12	2.39	107.55	102.99
2	B	803	C2R	O3A-PA-O5'	-2.27	100.69	106.73
3	A	502	OK8	O28-P27-O26	-2.15	101.02	106.73

There are no chirality outliers.

All (21) torsion outliers are listed below:

Mol	Chain	Res	Type	Atoms
2	B	802	C2R	C5'-O5'-PA-O1A
2	B	802	C2R	C5'-O5'-PA-O2A
2	B	802	C2R	C5'-O5'-PA-O3A
2	A	501	C2R	C5'-O5'-PA-O1A
2	A	501	C2R	C5'-O5'-PA-O2A
2	A	501	C2R	C5'-O5'-PA-O3A
3	A	502	OK8	C25-O26-P27-O28
3	A	502	OK8	C25-O26-P27-O29
5	B	805	EDO	O1-C1-C2-O2
5	B	807	EDO	O1-C1-C2-O2
5	B	809	EDO	O1-C1-C2-O2
3	A	502	OK8	C25-O26-P27-O30
5	A	505	EDO	O1-C1-C2-O2
2	B	802	C2R	O4'-C4'-C5'-O5'
3	A	502	OK8	C21-C20-C25-O26
5	A	506	EDO	O1-C1-C2-O2
2	B	802	C2R	C3'-C4'-C5'-O5'
5	B	806	EDO	O1-C1-C2-O2
3	A	502	OK8	O19-C20-C25-O26
5	A	504	EDO	O1-C1-C2-O2
3	A	502	OK8	C06-C05-N09-C10

There are no ring outliers.

6 monomers are involved in 10 short contacts:

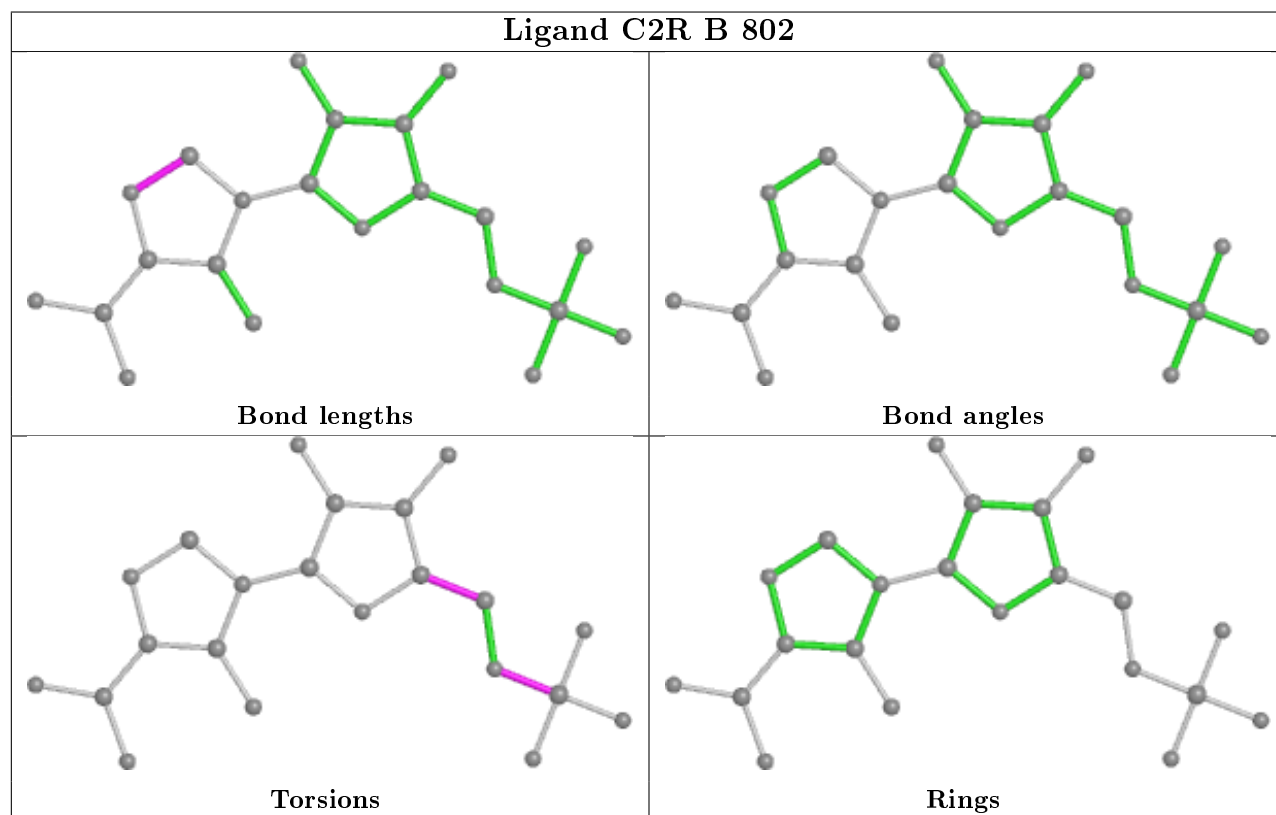
Mol	Chain	Res	Type	Clashes	Symm-Clashes
2	A	501	C2R	1	0

*Continued on next page...*

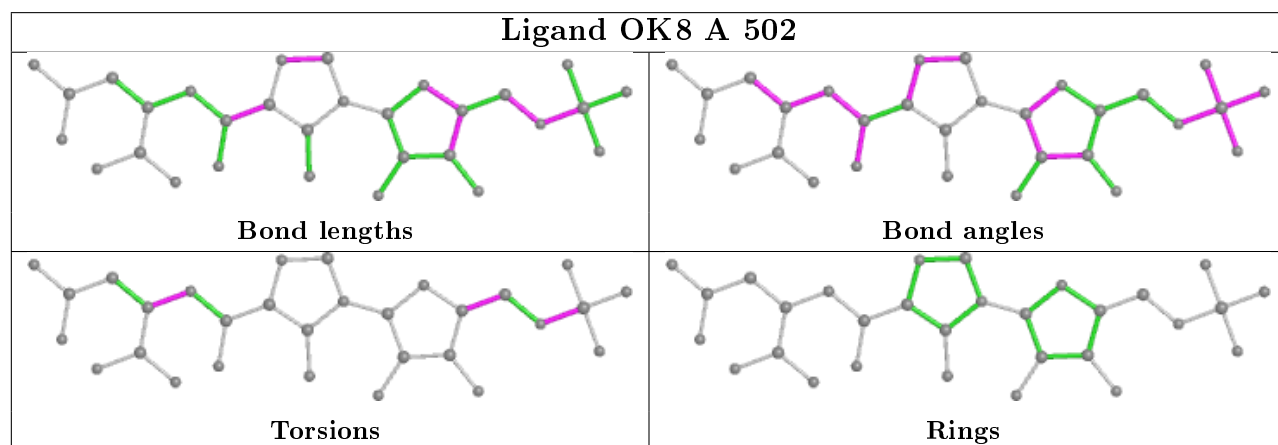
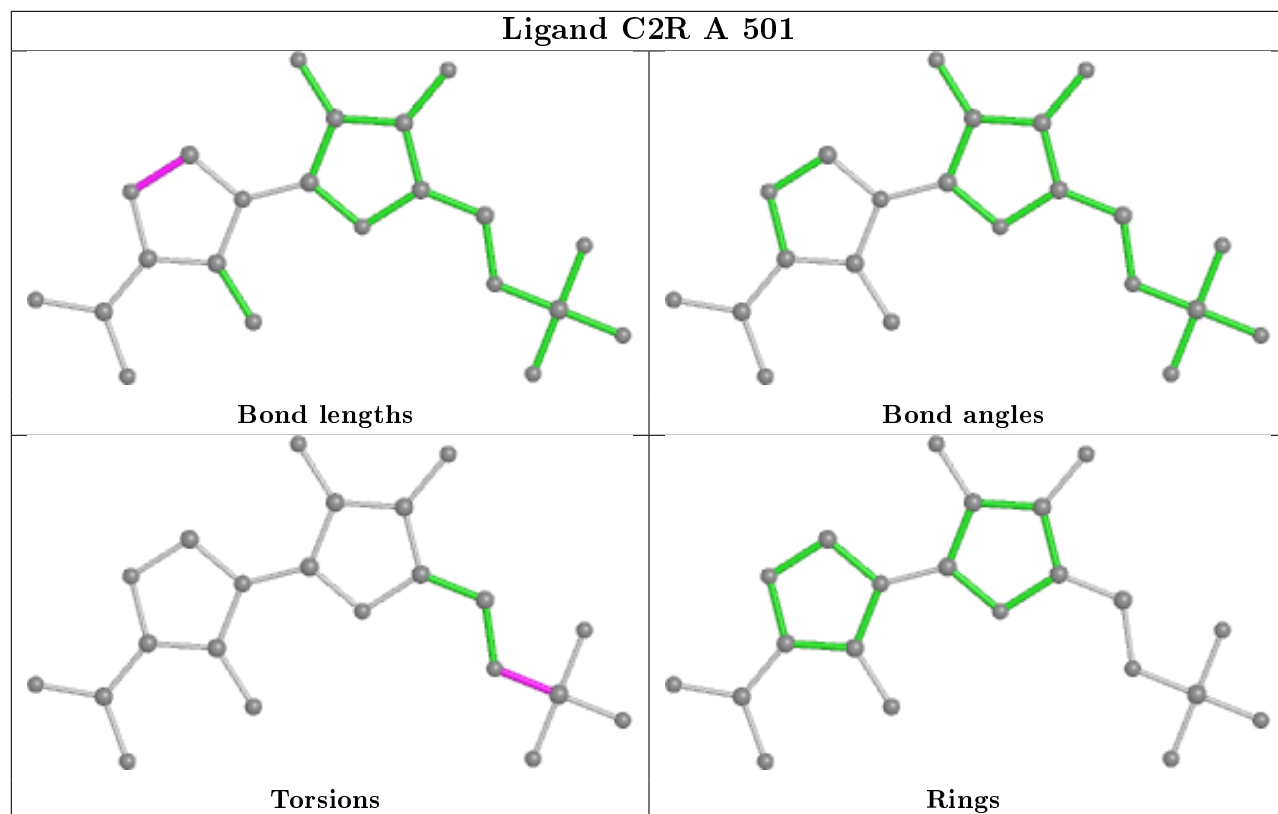
*Continued from previous page...*

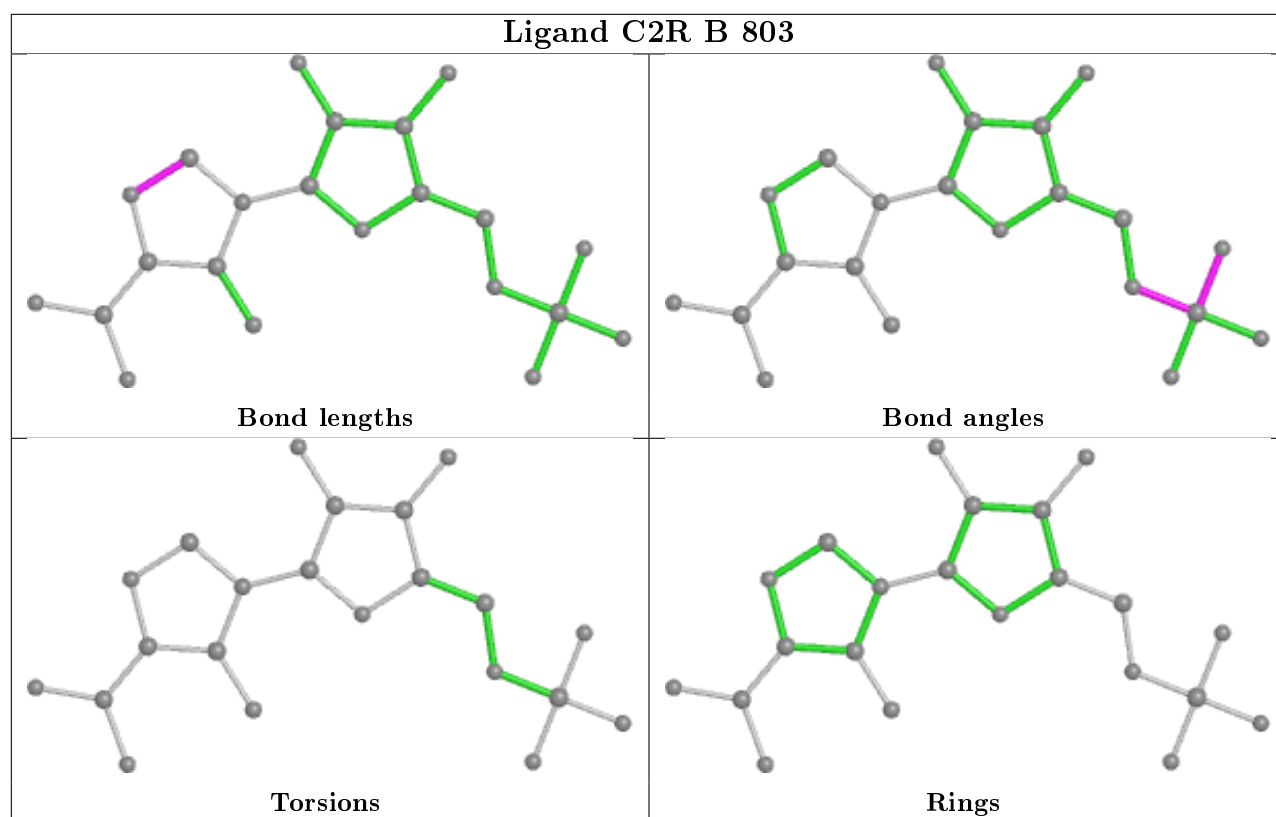
Mol	Chain	Res	Type	Clashes	Symm-Clashes
4	B	804	IMD	1	0
5	B	801	EDO	4	0
5	B	807	EDO	2	0
3	A	502	OK8	1	0
5	A	507	EDO	1	0

The following is a two-dimensional graphical depiction of Mogul quality analysis of bond lengths, bond angles, torsion angles, and ring geometry for all instances of the Ligand of Interest. In addition, ligands with molecular weight > 250 and outliers as shown on the validation Tables will also be included. For torsion angles, if less than 5% of the Mogul distribution of torsion angles is within 10 degrees of the torsion angle in question, then that torsion angle is considered an outlier. Any bond that is central to one or more torsion angles identified as an outlier by Mogul will be highlighted in the graph. For rings, the root-mean-square deviation (RMSD) between the ring in question and similar rings identified by Mogul is calculated over all ring torsion angles. If the average RMSD is greater than 60 degrees and the minimal RMSD between the ring in question and any Mogul-identified rings is also greater than 60 degrees, then that ring is considered an outlier. The outliers are highlighted in purple. The color gray indicates Mogul did not find sufficient equivalents in the CSD to analyse the geometry.









## 5.7 Other polymers [i](#)

There are no such residues in this entry.

## 5.8 Polymer linkage issues [i](#)

There are no chain breaks in this entry.

## 6 Fit of model and data

### 6.1 Protein, DNA and RNA chains

In the following table, the column labelled ‘#RSRZ> 2’ contains the number (and percentage) of RSRZ outliers, followed by percent RSRZ outliers for the chain as percentile scores relative to all X-ray entries and entries of similar resolution. The OWAB column contains the minimum, median, 95<sup>th</sup> percentile and maximum values of the occupancy-weighted average B-factor per residue. The column labelled ‘Q< 0.9’ lists the number of (and percentage) of residues with an average occupancy less than 0.9.

Mol	Chain	Analysed	<RSRZ>	#RSRZ>2	OWAB(Å <sup>2</sup> )	Q<0.9
1	A	419/425 (98%)	-0.22	3 (0%) 87 92	23, 36, 69, 93	0
1	B	419/425 (98%)	0.10	24 (5%) 23 34	22, 37, 84, 137	0
All	All	838/850 (98%)	-0.06	27 (3%) 47 59	22, 36, 77, 137	0

All (27) RSRZ outliers are listed below:

Mol	Chain	Res	Type	RSRZ
1	B	44	ALA	6.1
1	B	425	LEU	5.2
1	B	45	ALA	4.4
1	B	8	ASN	4.2
1	B	239	PRO	4.0
1	B	43	ASN	4.0
1	A	7	LEU	3.6
1	B	233	ASP	3.3
1	B	423	CYS	3.3
1	B	134	ALA	3.0
1	B	47	LYS	2.8
1	A	240	GLU	2.7
1	B	231	TYR	2.7
1	B	240	GLU	2.7
1	B	135	ASN	2.6
1	B	25	LEU	2.5
1	B	234	LEU	2.5
1	B	223	SER	2.4
1	A	8	ASN	2.3
1	B	27	SER	2.3
1	B	7	LEU	2.2
1	B	221	ASP	2.2
1	B	46	ARG	2.2
1	B	236	GLU	2.1

*Continued on next page...*

*Continued from previous page...*

Mol	Chain	Res	Type	RSRZ
1	B	9	ILE	2.1
1	B	40	THR	2.1
1	B	235	LYS	2.0

## 6.2 Non-standard residues in protein, DNA, RNA chains [i](#)

There are no non-standard protein/DNA/RNA residues in this entry.

## 6.3 Carbohydrates [i](#)

There are no monosaccharides in this entry.

## 6.4 Ligands [i](#)

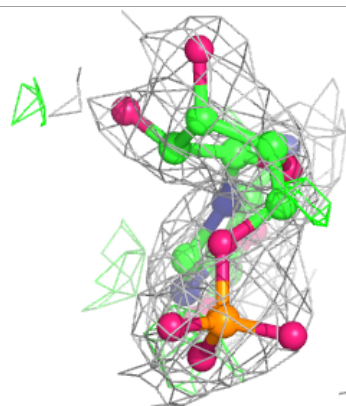
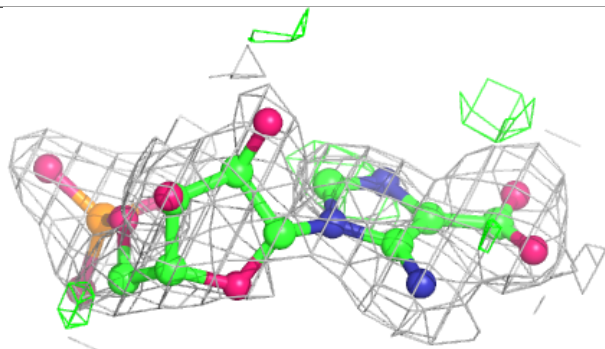
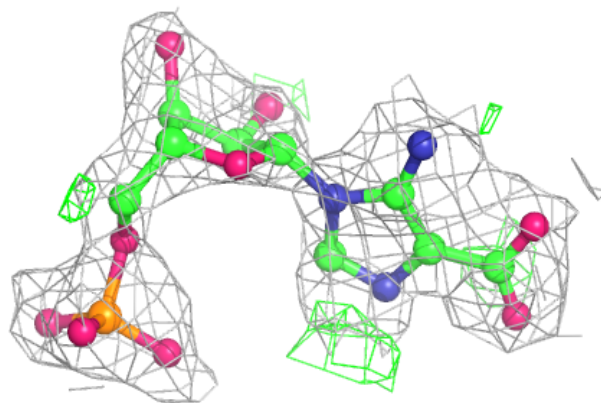
In the following table, the Atoms column lists the number of modelled atoms in the group and the number defined in the chemical component dictionary. The B-factors column lists the minimum, median, 95<sup>th</sup> percentile and maximum values of B factors of atoms in the group. The column labelled 'Q< 0.9' lists the number of atoms with occupancy less than 0.9.

Mol	Type	Chain	Res	Atoms	RSCC	RSR	B-factors(Å <sup>2</sup> )	Q<0.9
2	C2R	A	501	22/22	0.75	0.25	42,56,61,70	22
2	C2R	B	802	22/22	0.83	0.20	42,55,66,67	22
5	EDO	A	505	4/4	0.85	0.18	64,66,68,68	0
5	EDO	B	801	4/4	0.89	0.24	42,43,44,52	0
5	EDO	B	806	4/4	0.89	0.24	59,60,65,71	0
5	EDO	B	807	4/4	0.91	0.15	31,34,37,38	0
4	IMD	A	503	5/5	0.91	0.16	58,62,68,70	0
5	EDO	B	809	4/4	0.92	0.16	53,54,55,56	0
5	EDO	B	805	4/4	0.92	0.26	42,49,50,55	0
5	EDO	B	808	4/4	0.93	0.17	42,42,43,44	0
5	EDO	A	507	4/4	0.93	0.19	39,43,43,49	0
4	IMD	B	804	5/5	0.94	0.21	60,65,65,65	0
5	EDO	A	506	4/4	0.94	0.09	38,51,51,54	0
5	EDO	A	504	4/4	0.95	0.15	45,46,47,48	0
3	OK8	A	502	30/30	0.97	0.12	24,44,91,108	0
2	C2R	B	803	22/22	0.97	0.12	33,39,63,72	0

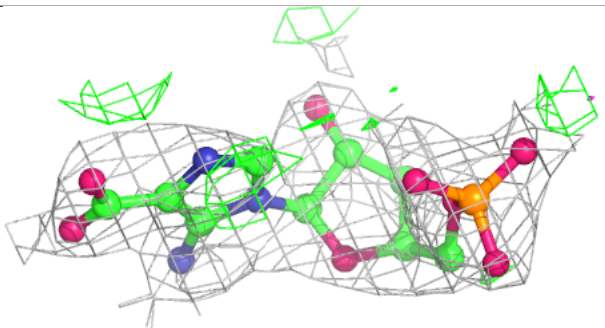
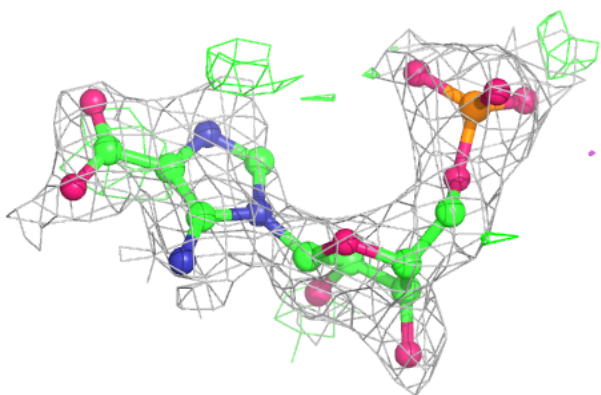
The following is a graphical depiction of the model fit to experimental electron density of all instances of the Ligand of Interest. In addition, ligands with molecular weight > 250 and outliers as shown on the geometry validation Tables will also be included. Each fit is shown from different orientation to approximate a three-dimensional view.

**Electron density around C2R A 501:**

$2mF_o-DF_c$  (at 0.7 rmsd) in gray  
 $mF_o-DF_c$  (at 3 rmsd) in purple (negative)  
and green (positive)

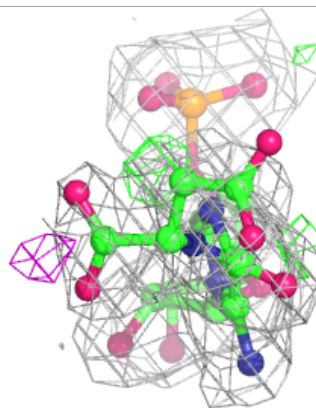
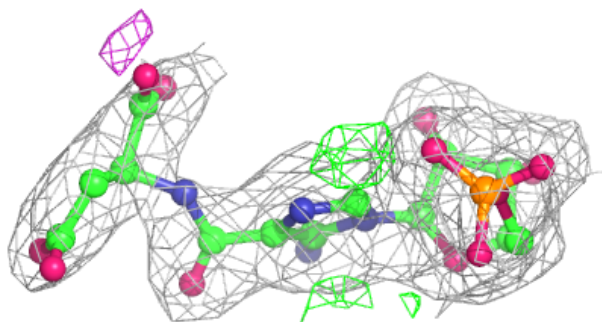
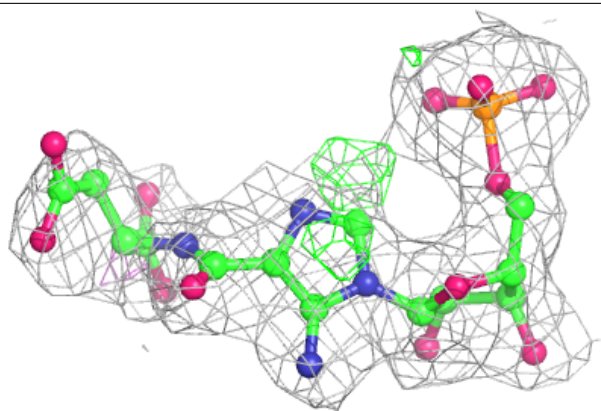
**Electron density around C2R B 802:**

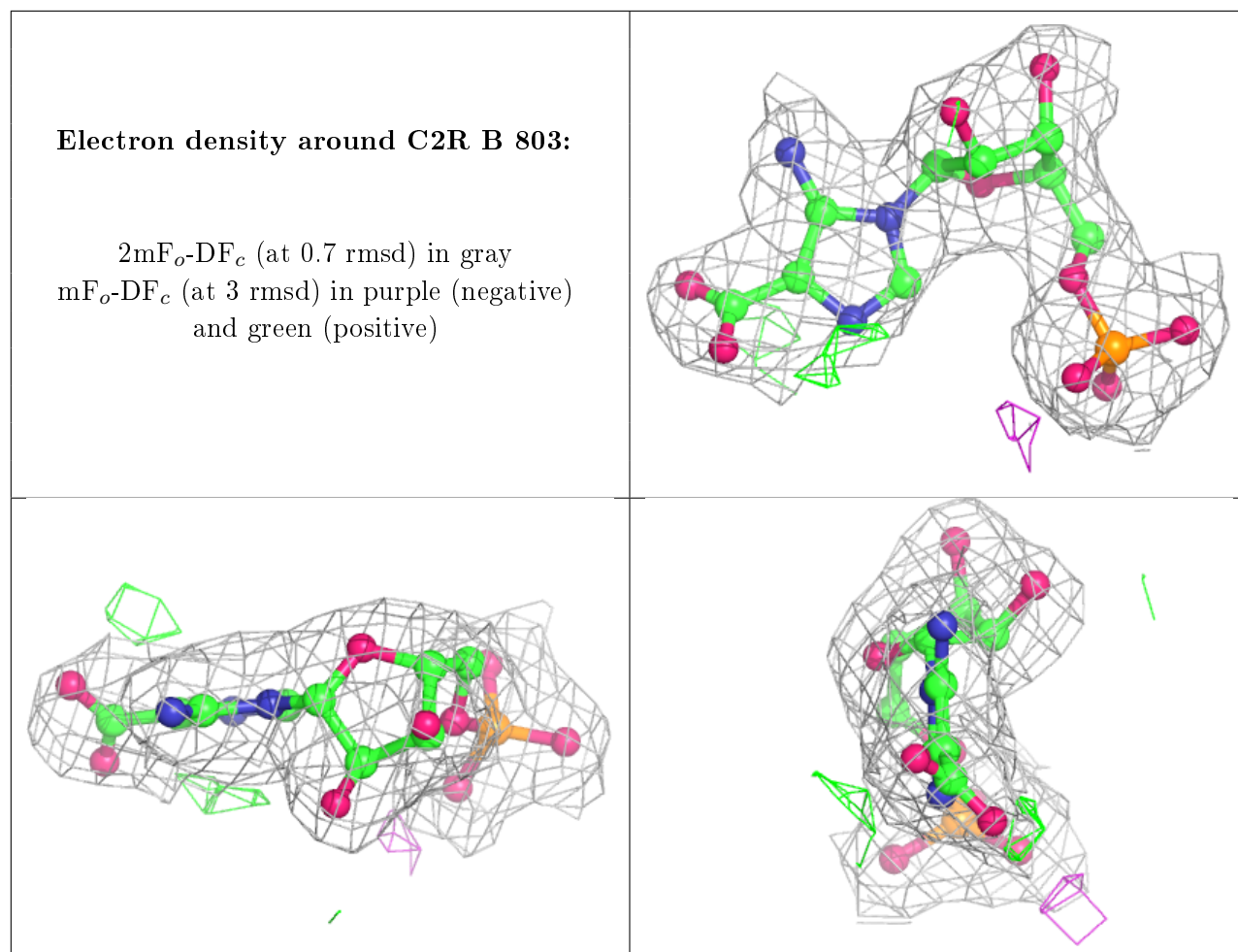
$2mF_o-DF_c$  (at 0.7 rmsd) in gray  
 $mF_o-DF_c$  (at 3 rmsd) in purple (negative)  
and green (positive)



**Electron density around OK8 A 502:**

$2mF_o-DF_c$  (at 0.7 rmsd) in gray  
 $mF_o-DF_c$  (at 3 rmsd) in purple (negative)  
and green (positive)





## 6.5 Other polymers [\(i\)](#)

There are no such residues in this entry.