



Full wwPDB EM Validation Report ⓘ

Aug 18, 2024 – 01:40 AM JST

PDB ID : 8Y7X
EMDB ID : EMD-39025
Title : Structure of HCoV-HKU1A spike in the functionally anchored-3up conformation with 3TMPRSS2
Authors : Lu, Y.C.; Zhang, X.; Wang, H.F.; Liu, X.C.; Sun, L.; Yang, H.T.
Deposited on : 2024-02-05
Resolution : 3.09 Å(reported)

This is a Full wwPDB EM Validation Report for a publicly released PDB entry.

We welcome your comments at validation@mail.wwpdb.org

A user guide is available at

<https://www.wwpdb.org/validation/2017/EMValidationReportHelp>

with specific help available everywhere you see the ⓘ symbol.

The types of validation reports are described at

<http://www.wwpdb.org/validation/2017/FAQs#types>.

The following versions of software and data (see [references ⓘ](#)) were used in the production of this report:

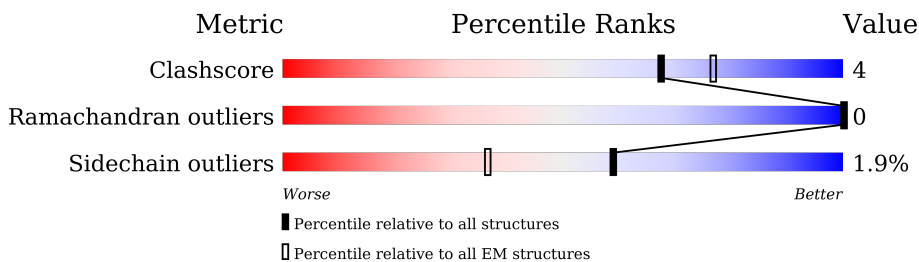
EMDB validation analysis : 0.0.1.dev92
Mogul : 1.8.5 (274361), CSD as541be (2020)
MolProbity : 4.02b-467
Percentile statistics : 20191225.v01 (using entries in the PDB archive December 25th 2019)
MapQ : 1.9.13
Ideal geometry (proteins) : Engh & Huber (2001)
Ideal geometry (DNA, RNA) : Parkinson et al. (1996)
Validation Pipeline (wwPDB-VP) : 2.37.1

1 Overall quality at a glance

The following experimental techniques were used to determine the structure:
ELECTRON MICROSCOPY

The reported resolution of this entry is 3.09 Å.

Percentile scores (ranging between 0-100) for global validation metrics of the entry are shown in the following graphic. The table shows the number of entries on which the scores are based.




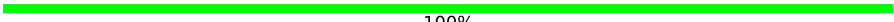
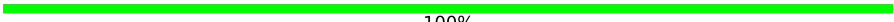

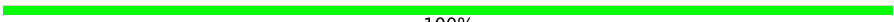

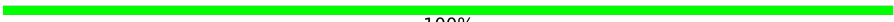
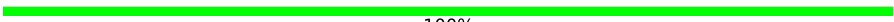
Metric	Whole archive (#Entries)	EM structures (#Entries)
Clashscore	158937	4297
Ramachandran outliers	154571	4023
Sidechain outliers	154315	3826

The table below summarises the geometric issues observed across the polymeric chains and their fit to the map. The red, orange, yellow and green segments of the bar indicate the fraction of residues that contain outliers for ≥ 3 , 2, 1 and 0 types of geometric quality criteria respectively. A grey segment represents the fraction of residues that are not modelled. The numeric value for each fraction is indicated below the corresponding segment, with a dot representing fractions $\leq 5\%$. The upper red bar (where present) indicates the fraction of residues that have poor fit to the EM map (all-atom inclusion $< 40\%$). The numeric value is given above the bar.

Mol	Chain	Length	Quality of chain
1	A	1268	 83% 10% 6%
1	B	1268	 83% 11% 6%
1	C	1268	 84% 10% 6%
2	x	383	 19% 61% 38%
2	y	383	 17% 61% 38%
2	z	383	 27% 61% 38%
3	D	2	 100%
3	E	2	 100%

Continued on next page...

Continued from previous page...

Mol	Chain	Length	Quality of chain
3	F	2	 100%
3	G	2	 100%
3	H	2	 100%
3	I	2	 50% 50%
3	J	2	 100%
3	K	2	 100%
3	L	2	 100%
3	M	2	 100%

2 Entry composition

There are 4 unique types of molecules in this entry. The entry contains 33248 atoms, of which 0 are hydrogens and 0 are deuteriums.

In the tables below, the AltConf column contains the number of residues with at least one atom in alternate conformation and the Trace column contains the number of residues modelled with at most 2 atoms.

- Molecule 1 is a protein called Spike glycoprotein.

Mol	Chain	Residues	Atoms					AltConf	Trace
			Total	C	N	O	S		
1	B	1195	9302	5933	1526	1785	58	1	0
1	A	1197	9305	5935	1526	1786	58	1	0
1	C	1195	9285	5922	1524	1782	57	1	0

There are 21 discrepancies between the modelled and reference sequences:

Chain	Residue	Modelled	Actual	Comment	Reference
B	756	GLY	ARG	engineered mutation	UNP Q5MQD0
B	757	GLY	ARG	engineered mutation	UNP Q5MQD0
B	758	SER	LYS	engineered mutation	UNP Q5MQD0
B	759	GLY	ARG	engineered mutation	UNP Q5MQD0
B	760	SER	ARG	engineered mutation	UNP Q5MQD0
B	1071	PRO	ALA	engineered mutation	UNP Q5MQD0
B	1072	PRO	LEU	engineered mutation	UNP Q5MQD0
A	756	GLY	ARG	engineered mutation	UNP Q5MQD0
A	757	GLY	ARG	engineered mutation	UNP Q5MQD0
A	758	SER	LYS	engineered mutation	UNP Q5MQD0
A	759	GLY	ARG	engineered mutation	UNP Q5MQD0
A	760	SER	ARG	engineered mutation	UNP Q5MQD0
A	1071	PRO	ALA	engineered mutation	UNP Q5MQD0
A	1072	PRO	LEU	engineered mutation	UNP Q5MQD0
C	756	GLY	ARG	engineered mutation	UNP Q5MQD0
C	757	GLY	ARG	engineered mutation	UNP Q5MQD0
C	758	SER	LYS	engineered mutation	UNP Q5MQD0
C	759	GLY	ARG	engineered mutation	UNP Q5MQD0
C	760	SER	ARG	engineered mutation	UNP Q5MQD0
C	1071	PRO	ALA	engineered mutation	UNP Q5MQD0
C	1072	PRO	LEU	engineered mutation	UNP Q5MQD0

- Molecule 2 is a protein called Transmembrane protease serine 2.

Mol	Chain	Residues	Atoms					AltConf	Trace
2	x	236	Total	C	N	O	S	0	0
			1582	1013	273	285	11		
2	y	236	Total	C	N	O	S	0	0
			1586	1016	274	285	11		
2	z	236	Total	C	N	O	S	0	0
			1586	1016	274	285	11		

There are 18 discrepancies between the modelled and reference sequences:

Chain	Residue	Modelled	Actual	Comment	Reference
x	251	ASP	SER	engineered mutation	UNP O15393
x	252	ASP	SER	engineered mutation	UNP O15393
x	?	-	ARG	deletion	UNP O15393
x	253	ASP	GLN	engineered mutation	UNP O15393
x	254	ASP	SER	engineered mutation	UNP O15393
x	255	LYS	ARG	engineered mutation	UNP O15393
y	251	ASP	SER	engineered mutation	UNP O15393
y	252	ASP	SER	engineered mutation	UNP O15393
y	?	-	ARG	deletion	UNP O15393
y	253	ASP	GLN	engineered mutation	UNP O15393
y	254	ASP	SER	engineered mutation	UNP O15393
y	255	LYS	ARG	engineered mutation	UNP O15393
z	251	ASP	SER	engineered mutation	UNP O15393
z	252	ASP	SER	engineered mutation	UNP O15393
z	?	-	ARG	deletion	UNP O15393
z	253	ASP	GLN	engineered mutation	UNP O15393
z	254	ASP	SER	engineered mutation	UNP O15393
z	255	LYS	ARG	engineered mutation	UNP O15393

- Molecule 3 is an oligosaccharide called 2-acetamido-2-deoxy-beta-D-glucopyranose-(1-4)-2-acetamido-2-deoxy-beta-D-glucopyranose.



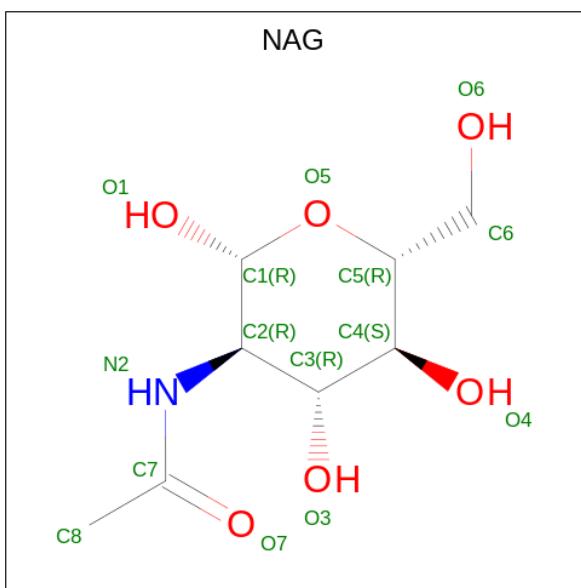
Mol	Chain	Residues	Atoms				AltConf	Trace
3	D	2	Total	C	N	O	0	0
			28	16	2	10		
3	E	2	Total	C	N	O	0	0
			28	16	2	10		
3	F	2	Total	C	N	O	0	0
			28	16	2	10		

Continued on next page...

Continued from previous page...

Mol	Chain	Residues	Atoms				AltConf	Trace
			Total	C	N	O		
3	G	2	Total	C	N	O	0	0
			28	16	2	10		
3	H	2	Total	C	N	O	0	0
			28	16	2	10		
3	I	2	Total	C	N	O	0	0
			28	16	2	10		
3	J	2	Total	C	N	O	0	0
			28	16	2	10		
3	K	2	Total	C	N	O	0	0
			28	16	2	10		
3	L	2	Total	C	N	O	0	0
			28	16	2	10		
3	M	2	Total	C	N	O	0	0
			28	16	2	10		

- Molecule 4 is 2-acetamido-2-deoxy-beta-D-glucopyranose (three-letter code: NAG) (formula: $C_8H_{15}NO_6$).

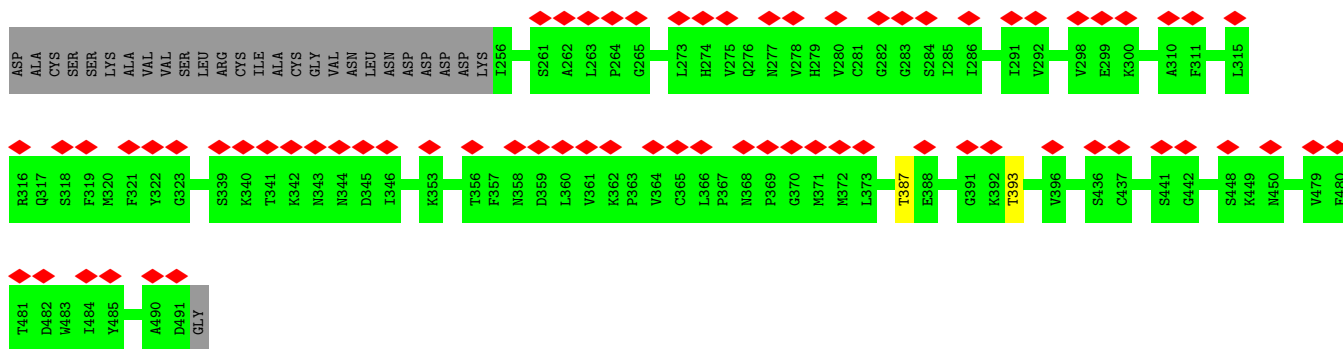


Mol	Chain	Residues	Atoms				AltConf
			Total	C	N	O	
4	B	1	Total	C	N	O	0
			14	8	1	5	
4	B	1	Total	C	N	O	0
			14	8	1	5	
4	B	1	Total	C	N	O	0
			14	8	1	5	
4	B	1	Total	C	N	O	0
			14	8	1	5	

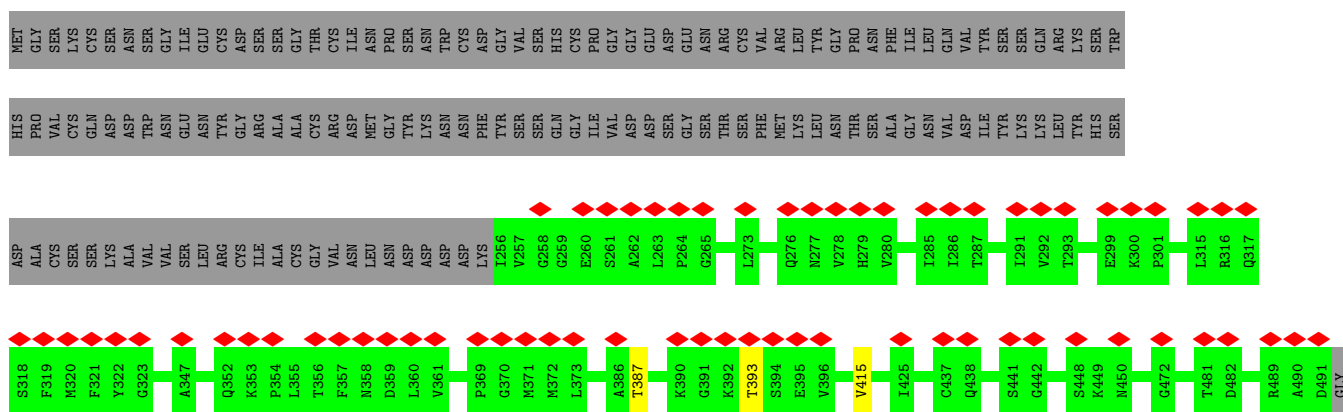
Continued on next page...

Continued from previous page...

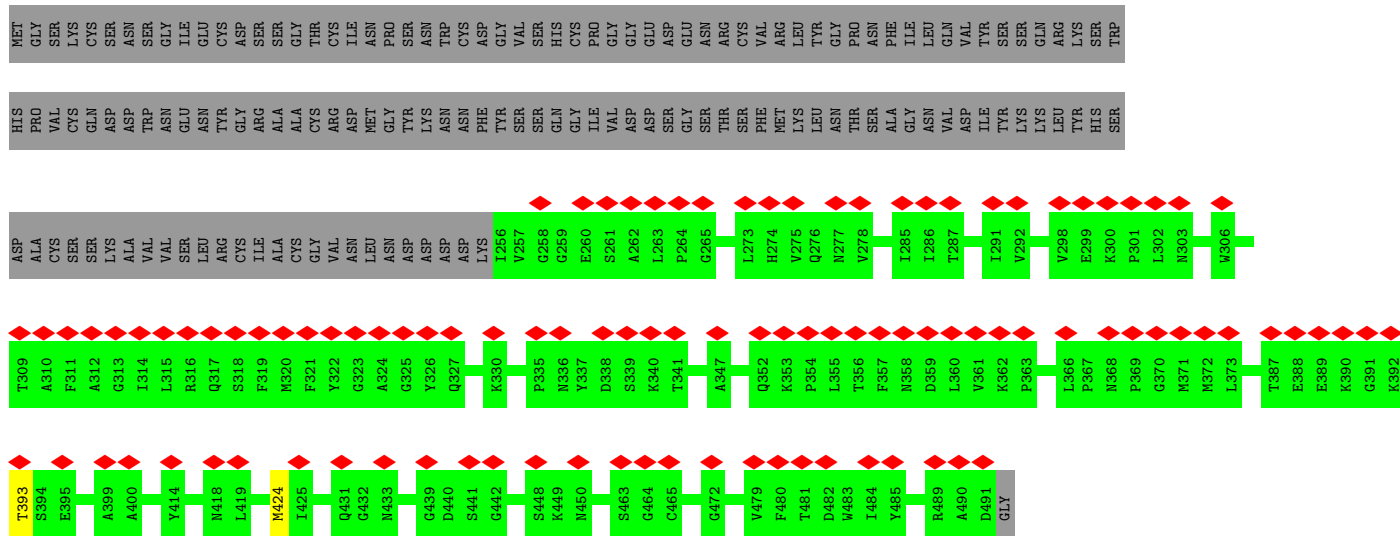
Mol	Chain	Residues	Atoms				AltConf
			Total	C	N	O	
4	B	1	Total 14	C 8	N 1	O 5	0
4	B	1	Total 14	C 8	N 1	O 5	0
4	B	1	Total 14	C 8	N 1	O 5	0
4	B	1	Total 14	C 8	N 1	O 5	0
4	A	1	Total 14	C 8	N 1	O 5	0
4	A	1	Total 14	C 8	N 1	O 5	0
4	A	1	Total 14	C 8	N 1	O 5	0
4	A	1	Total 14	C 8	N 1	O 5	0
4	A	1	Total 14	C 8	N 1	O 5	0
4	A	1	Total 14	C 8	N 1	O 5	0
4	A	1	Total 14	C 8	N 1	O 5	0
4	A	1	Total 14	C 8	N 1	O 5	0
4	A	1	Total 14	C 8	N 1	O 5	0
4	C	1	Total 14	C 8	N 1	O 5	0
4	C	1	Total 14	C 8	N 1	O 5	0
4	C	1	Total 14	C 8	N 1	O 5	0
4	C	1	Total 14	C 8	N 1	O 5	0
4	C	1	Total 14	C 8	N 1	O 5	0
4	C	1	Total 14	C 8	N 1	O 5	0
4	C	1	Total 14	C 8	N 1	O 5	0



• Molecule 2: Transmembrane protease serine 2



• Molecule 2: Transmembrane protease serine 2



• Molecule 3: 2-acetamido-2-deoxy-beta-D-glucopyranose-(1-4)-2-acetamido-2-deoxy-beta-D-glucopyranose

Chain D:  100%

MAG1
MAG2

- Molecule 3: 2-acetamido-2-deoxy-beta-D-glucopyranose-(1-4)-2-acetamido-2-deoxy-beta-D-glucopyranose

Chain E:  100%

MAG1
MAG2

- Molecule 3: 2-acetamido-2-deoxy-beta-D-glucopyranose-(1-4)-2-acetamido-2-deoxy-beta-D-glucopyranose

Chain F:  100%

MAG1
MAG2

- Molecule 3: 2-acetamido-2-deoxy-beta-D-glucopyranose-(1-4)-2-acetamido-2-deoxy-beta-D-glucopyranose

Chain G:  100%

MAG1
MAG2

- Molecule 3: 2-acetamido-2-deoxy-beta-D-glucopyranose-(1-4)-2-acetamido-2-deoxy-beta-D-glucopyranose

Chain H:  100%

MAG1
MAG2

- Molecule 3: 2-acetamido-2-deoxy-beta-D-glucopyranose-(1-4)-2-acetamido-2-deoxy-beta-D-glucopyranose

Chain I:  50%

MAG1
MAG2

- Molecule 3: 2-acetamido-2-deoxy-beta-D-glucopyranose-(1-4)-2-acetamido-2-deoxy-beta-D-glucopyranose

Chain J:  100%

MAG1
MAG2

- Molecule 3: 2-acetamido-2-deoxy-beta-D-glucopyranose-(1-4)-2-acetamido-2-deoxy-beta-D-glucopyranose

Chain K:  100%

MAGE
MAGZ

- Molecule 3: 2-acetamido-2-deoxy-beta-D-glucopyranose-(1-4)-2-acetamido-2-deoxy-beta-D-glucopyranose

Chain L:  100%

MAGE
MAGZ

- Molecule 3: 2-acetamido-2-deoxy-beta-D-glucopyranose-(1-4)-2-acetamido-2-deoxy-beta-D-glucopyranose

Chain M:  100%

MAGE
MAGZ

4 Experimental information

Property	Value	Source
EM reconstruction method	SINGLE PARTICLE	Depositor
Imposed symmetry	POINT, Not provided	
Number of particles used	935674	Depositor
Resolution determination method	FSC 0.143 CUT-OFF	Depositor
CTF correction method	PHASE FLIPPING AND AMPLITUDE CORRECTION	Depositor
Microscope	FEI TITAN KRIOS	Depositor
Voltage (kV)	300	Depositor
Electron dose ($e^-/\text{\AA}^2$)	60	Depositor
Minimum defocus (nm)	1200	Depositor
Maximum defocus (nm)	2200	Depositor
Magnification	Not provided	
Image detector	GATAN K3 BIOQUANTUM (6k x 4k)	Depositor
Maximum map value	1.873	Depositor
Minimum map value	-0.002	Depositor
Average map value	0.001	Depositor
Map value standard deviation	0.023	Depositor
Recommended contour level	0.006	Depositor
Map size (Å)	393.6, 393.6, 393.6	wwPDB
Map dimensions	480, 480, 480	wwPDB
Map angles (°)	90.0, 90.0, 90.0	wwPDB
Pixel spacing (Å)	0.82, 0.82, 0.82	Depositor

5 Model quality [i](#)

5.1 Standard geometry [i](#)

Bond lengths and bond angles in the following residue types are not validated in this section: NAG

The Z score for a bond length (or angle) is the number of standard deviations the observed value is removed from the expected value. A bond length (or angle) with $|Z| > 5$ is considered an outlier worth inspection. RMSZ is the root-mean-square of all Z scores of the bond lengths (or angles).

Mol	Chain	Bond lengths		Bond angles	
		RMSZ	# Z >5	RMSZ	# Z >5
1	A	0.24	0/9535	0.42	0/12992
1	B	0.24	0/9532	0.42	0/12986
1	C	0.24	0/9515	0.42	0/12966
2	x	0.23	0/1626	0.43	0/2249
2	y	0.23	0/1630	0.43	0/2253
2	z	0.23	0/1630	0.43	0/2253
All	All	0.24	0/33468	0.42	0/45699

There are no bond length outliers.

There are no bond angle outliers.

There are no chirality outliers.

There are no planarity outliers.

5.2 Too-close contacts [i](#)

In the following table, the Non-H and H(model) columns list the number of non-hydrogen atoms and hydrogen atoms in the chain respectively. The H(added) column lists the number of hydrogen atoms added and optimized by MolProbity. The Clashes column lists the number of clashes within the asymmetric unit, whereas Symm-Clashes lists symmetry-related clashes.

Mol	Chain	Non-H	H(model)	H(added)	Clashes	Symm-Clashes
1	A	9305	0	8865	73	0
1	B	9302	0	8860	75	0
1	C	9285	0	8832	74	0
2	x	1582	0	1358	0	0
2	y	1586	0	1369	0	0
2	z	1586	0	1369	0	0
3	D	28	0	25	0	0

Continued on next page...

Continued from previous page...

Mol	Chain	Non-H	H(model)	H(added)	Clashes	Symm-Clashes
3	E	28	0	25	0	0
3	F	28	0	25	0	0
3	G	28	0	25	0	0
3	H	28	0	25	0	0
3	I	28	0	25	1	0
3	J	28	0	25	0	0
3	K	28	0	25	0	0
3	L	28	0	25	0	0
3	M	28	0	25	0	0
4	A	112	0	104	0	0
4	B	112	0	104	1	0
4	C	98	0	91	0	0
All	All	33248	0	31202	211	0

The all-atom clashscore is defined as the number of clashes found per 1000 atoms (including hydrogen atoms). The all-atom clashscore for this structure is 4.

All (211) close contacts within the same asymmetric unit are listed below, sorted by their clash magnitude.

Atom-1	Atom-2	Interatomic distance (Å)	Clash overlap (Å)
1:C:621:CYS:HB3	1:C:634:ILE:HG12	1.67	0.74
1:C:650:LEU:HB3	1:C:659:GLY:HA3	1.73	0.70
1:B:214:ALA:HB2	1:B:220:THR:HA	1.72	0.70
1:B:162:ILE:HG12	1:B:172:GLU:HB2	1.75	0.69
1:B:624:TYR:HB2	1:B:626:LEU:HD13	1.74	0.68
1:B:201:HIS:HB2	1:B:212:TYR:HB2	1.77	0.67
1:C:262:SER:OG	1:C:264:ARG:NH1	2.28	0.67
1:A:162:ILE:HD13	1:A:171:ASN:HA	1.77	0.66
1:C:1177:LYS:HE2	1:C:1205:ASN:HA	1.78	0.65
1:A:624:TYR:HB2	1:A:626:LEU:HD13	1.79	0.64
1:C:162:ILE:HG12	1:C:172:GLU:HB2	1.78	0.64
1:C:214:ALA:HB2	1:C:220:THR:HA	1.79	0.63
1:C:692:LEU:HB2	1:C:722:PHE:HB2	1.81	0.63
1:C:52:LEU:O	1:C:54:ARG:N	2.32	0.62
1:A:822:VAL:O	1:A:1085:ARG:NH1	2.33	0.62
1:B:1041:ALA:O	1:B:1045:ASN:ND2	2.33	0.61
1:A:52:LEU:O	1:A:54:ARG:N	2.33	0.61
1:B:139:VAL:HG22	1:B:148:ILE:HG22	1.83	0.61
1:B:424:GLN:HG2	1:B:591:PHE:HE1	1.66	0.60
1:A:352:CYS:SG	1:A:353:ASN:N	2.74	0.60
1:B:113:VAL:HG22	1:B:166:LYS:HE3	1.83	0.59

Continued on next page...

Continued from previous page...

Atom-1	Atom-2	Interatomic distance (Å)	Clash overlap (Å)
1:A:825:ASN:ND2	1:C:310:THR:OG1	2.36	0.59
1:C:664:VAL:HG23	1:C:665:THR:HG23	1.83	0.59
1:A:1168:ILE:HG13	1:A:1172:VAL:HG13	1.83	0.59
1:A:1079:ASP:O	1:A:1083:ASN:ND2	2.32	0.58
1:A:74:PHE:HB3	1:A:257:TRP:HB3	1.85	0.58
1:B:1002:ASN:ND2	1:A:1211:THR:O	2.37	0.58
1:B:744:CYS:SG	1:B:745:VAL:N	2.77	0.58
1:A:327:CYS:N	1:A:352:CYS:SG	2.77	0.57
1:C:727:LEU:HD22	1:C:767:ARG:HD2	1.85	0.57
1:B:340:SER:OG	1:B:343:ASN:OD1	2.23	0.57
1:A:183:CYS:H	1:C:351:ASN:HD21	1.53	0.57
1:B:80:LYS:NZ	1:B:242:CYS:O	2.37	0.57
1:B:1028:SER:OG	1:B:1032:LYS:NZ	2.38	0.56
1:B:692:LEU:HB2	1:B:722:PHE:HB2	1.86	0.56
1:C:123:THR:HG23	1:C:238:LEU:HB2	1.87	0.56
1:C:352:CYS:SG	1:C:353:ASN:N	2.79	0.56
1:A:373:PHE:HB2	1:A:421:SER:HB3	1.88	0.56
1:C:1168:ILE:HG13	1:C:1172:VAL:HG23	1.88	0.55
4:B:1304:NAG:H83	4:B:1304:NAG:H3	1.88	0.55
1:A:839:PHE:HD2	1:A:1086:LEU:HD13	1.71	0.55
1:A:130:PHE:HE2	1:A:234:HIS:HB2	1.72	0.55
1:C:352:CYS:H	1:C:604:THR:HB	1.72	0.55
1:C:495:CYS:SG	1:C:499:THR:OG1	2.56	0.55
1:A:372:ASN:HB2	1:A:421:SER:HA	1.88	0.55
1:B:430:PRO:HA	1:B:587:ARG:HG2	1.87	0.55
1:B:1086:LEU:O	1:B:1090:ASN:ND2	2.32	0.55
1:A:927:ASN:OD1	1:C:696:ASN:ND2	2.38	0.54
1:A:417:ASP:HB2	1:A:542:VAL:HG21	1.89	0.54
1:B:74:PHE:HB3	1:B:257:TRP:HB3	1.89	0.54
1:A:214:ALA:HB2	1:A:220:THR:HA	1.89	0.54
1:A:693:LEU:HD13	1:A:721:VAL:HG22	1.90	0.54
1:C:652:ASP:OD1	1:C:656:ASN:N	2.40	0.54
1:A:1079:ASP:OD1	1:A:1083:ASN:ND2	2.41	0.53
1:A:992:ASN:ND2	1:A:996:VAL:O	2.41	0.53
1:A:424:GLN:HB3	1:A:591:PHE:HE1	1.74	0.53
1:C:822:VAL:O	1:C:1085:ARG:NH1	2.39	0.53
1:C:355:ASN:HD21	1:C:608:ASP:HB2	1.74	0.53
1:C:151:CYS:HA	1:C:183:CYS:HB3	1.91	0.53
1:C:400:ASP:HB2	1:C:409:LEU:HD12	1.91	0.53
1:C:675:TYR:CZ	1:C:697:LEU:HD11	2.45	0.52
1:B:640:ALA:HB3	1:B:668:THR:HG21	1.91	0.52

Continued on next page...

Continued from previous page...

Atom-1	Atom-2	Interatomic distance (Å)	Clash overlap (Å)
1:A:85:LEU:HD13	1:A:158:TYR:HB3	1.91	0.52
1:C:629:ILE:HD13	1:C:657:ILE:HD13	1.91	0.52
1:C:201:HIS:HB2	1:C:212:TYR:HB2	1.91	0.52
1:C:992:ASN:ND2	1:C:996:VAL:O	2.43	0.52
1:B:602:GLY:HA2	1:C:182:LEU:HD11	1.92	0.52
1:B:424:GLN:HE21	1:B:591:PHE:HD1	1.57	0.52
1:B:927:ASN:OD1	1:A:696:ASN:ND2	2.39	0.52
1:A:183:CYS:O	1:C:351:ASN:ND2	2.42	0.51
1:B:113:VAL:O	1:B:116:THR:OG1	2.20	0.51
1:B:167:GLY:O	1:B:243:ASN:ND2	2.44	0.51
1:B:424:GLN:HG2	1:B:591:PHE:CE1	2.46	0.51
1:C:74:PHE:HB3	1:C:257:TRP:HB3	1.92	0.51
1:B:1064:GLU:OE2	1:B:1068:ARG:NH2	2.43	0.51
1:C:332:TRP:O	1:C:390:LYS:NZ	2.41	0.51
1:C:795:PRO:HB3	1:C:1154:PRO:HB3	1.92	0.51
1:A:384:LYS:NZ	1:A:601:SER:OG	2.41	0.51
1:A:245:ILE:HG21	1:A:254:LEU:HG	1.93	0.50
1:B:242:CYS:HB3	1:B:245:ILE:HG12	1.92	0.50
1:B:53:ASP:N	1:B:53:ASP:OD1	2.44	0.50
1:B:442:SER:OG	1:B:445:ASN:ND2	2.34	0.50
1:B:402:GLN:O	1:B:410:GLN:NE2	2.42	0.50
1:B:665:THR:HG23	1:B:667:LYS:HG2	1.92	0.50
1:B:820:LEU:HA	1:B:824:SER:HA	1.94	0.50
1:B:509:VAL:HG22	1:B:510:LEU:H	1.77	0.50
1:C:998:MET:O	1:C:1002:ASN:ND2	2.32	0.50
1:A:795:PRO:HB3	1:A:1154:PRO:HB3	1.94	0.49
1:C:139:VAL:HG22	1:C:148:ILE:HG12	1.94	0.49
1:C:424:GLN:HB3	1:C:591:PHE:HE1	1.77	0.49
1:B:822:VAL:O	1:B:1085:ARG:NH1	2.44	0.49
1:A:430:PRO:HA	1:A:587:ARG:HG2	1.94	0.49
1:A:802:GLY:HA3	1:A:1019:ILE:HD11	1.93	0.49
1:C:832:LEU:HG	1:C:1075:GLN:HE21	1.78	0.49
1:B:52:LEU:HD12	1:B:52:LEU:H	1.77	0.49
1:A:442:SER:OG	1:A:445:ASN:ND2	2.35	0.49
1:A:123:THR:HG23	1:A:238:LEU:HB2	1.94	0.49
1:C:113:VAL:O	1:C:116:THR:OG1	2.21	0.49
1:A:1057:ALA:HB1	1:A:1077:GLN:HB3	1.95	0.48
1:C:80:LYS:NZ	1:C:246:SER:OG	2.45	0.48
1:C:14:VAL:N	1:C:90:TYR:O	2.47	0.48
1:C:430:PRO:HA	1:C:587:ARG:HG2	1.95	0.48
1:B:1176:PRO:HB3	1:B:1190:PHE:HE1	1.77	0.48

Continued on next page...

Continued from previous page...

Atom-1	Atom-2	Interatomic distance (Å)	Clash overlap (Å)
1:C:361:ARG:HH21	1:C:362:LEU:HD23	1.78	0.48
1:C:387:VAL:HB	1:C:595:ILE:HB	1.95	0.48
1:B:992:ASN:ND2	1:B:996:VAL:O	2.47	0.47
1:A:129:VAL:HG21	1:A:133:ASN:HD21	1.78	0.47
1:C:137:ILE:HA	1:C:150:ALA:HA	1.95	0.47
1:A:850:VAL:HG13	1:A:1100:ILE:HG13	1.95	0.47
1:A:201:HIS:HB3	1:A:212:TYR:HB2	1.96	0.47
1:B:436:ILE:HD13	1:B:458:HIS:HA	1.96	0.47
1:C:1027:ASN:OD1	1:C:1028:SER:N	2.47	0.47
1:A:640:ALA:HB3	1:A:668:THR:HG21	1.95	0.47
1:B:795:PRO:HB3	1:B:1154:PRO:HB3	1.96	0.47
1:A:219:PRO:HG3	1:A:276:ILE:HB	1.98	0.46
1:C:744:CYS:SG	1:C:745:VAL:N	2.89	0.46
1:C:883:VAL:HG12	1:C:888:PHE:HE1	1.79	0.46
1:B:29:ASN:HD22	1:B:88:LEU:HD22	1.79	0.46
1:C:693:LEU:HD13	1:C:721:VAL:HG22	1.96	0.46
1:B:446:ARG:HA	1:B:450:PHE:HB3	1.98	0.46
1:A:515:TRP:HE1	1:A:517:ARG:NE	2.14	0.46
1:A:744:CYS:SG	1:A:745:VAL:N	2.89	0.46
1:C:236:TYR:HD2	1:C:238:LEU:HD12	1.81	0.45
1:C:436:ILE:HD13	1:C:458:HIS:HA	1.98	0.45
1:A:53:ASP:OD1	1:A:53:ASP:N	2.48	0.45
1:B:318:HIS:CE1	1:B:611:GLN:HB3	2.52	0.45
1:B:792:ILE:HD12	1:B:1162:VAL:HG21	1.98	0.45
1:B:895:LEU:N	1:B:899:CYS:SG	2.90	0.45
1:B:919:ASP:OD1	1:B:919:ASP:N	2.49	0.45
1:C:247:SER:HA	1:C:251:ASN:HA	1.99	0.45
1:A:982:PRO:HD2	1:A:985:LEU:HD12	1.99	0.44
1:B:998:MET:HG2	1:A:1209:MET:HG2	2.00	0.44
1:A:42:VAL:HG11	1:A:266:TYR:HE2	1.80	0.44
1:C:212:TYR:HB3	1:C:220:THR:HB	2.00	0.44
1:A:1027:ASN:OD1	1:A:1028:SER:N	2.51	0.44
1:B:693:LEU:HD13	1:B:721:VAL:HG22	1.99	0.44
1:C:702:VAL:HG22	1:C:706:ILE:HD12	1.99	0.44
1:C:869:VAL:HG13	1:C:969:ALA:HB2	1.99	0.44
1:B:79:LEU:HB2	1:B:239:PRO:HB3	1.99	0.44
1:B:125:VAL:HG23	1:B:138:VAL:HG22	2.00	0.44
1:B:839:PHE:HD2	1:B:1086:LEU:HD13	1.82	0.44
1:C:213:TYR:HB3	1:C:223:LEU:HD11	1.99	0.44
1:A:919:ASP:N	1:A:919:ASP:OD1	2.51	0.44
1:C:80:LYS:HE3	1:C:245:ILE:HB	1.99	0.44

Continued on next page...

Continued from previous page...

Atom-1	Atom-2	Interatomic distance (Å)	Clash overlap (Å)
1:C:1116:GLU:OE1	1:C:1124:ARG:NH1	2.49	0.44
1:B:417:ASP:HB2	1:B:542:VAL:HG21	2.00	0.43
1:B:634:ILE:HG13	1:B:674:CYS:HB3	2.00	0.43
1:C:1176:PRO:HB3	1:C:1190:PHE:HE1	1.82	0.43
1:A:162:ILE:HG12	1:A:172:GLU:HG3	1.99	0.43
1:A:509:VAL:HG12	1:A:510:LEU:H	1.83	0.43
1:A:650:LEU:HB3	1:A:659:GLY:H	1.83	0.43
1:C:108:ASN:ND2	1:C:195:THR:O	2.35	0.43
1:B:320:ARG:HH12	1:B:611:GLN:HB2	1.82	0.43
1:A:205:GLU:O	1:A:208:THR:OG1	2.32	0.43
1:A:702:VAL:HG23	1:A:706:ILE:HD12	2.00	0.43
1:C:377:LYS:NZ	1:C:600:ASN:OD1	2.51	0.43
1:B:740:GLY:HA2	1:C:953:ILE:HA	2.01	0.43
1:B:26:ASN:HD21	1:B:28:LEU:HD23	1.83	0.43
1:A:321:ILE:HD12	1:A:322:PRO:HD2	2.00	0.43
1:B:608:ASP:OD1	1:B:608:ASP:N	2.50	0.43
1:B:474:CYS:SG	1:B:476:CYS:HB2	2.59	0.43
1:A:629:ILE:HG21	1:A:657:ILE:HD11	2.01	0.42
1:A:746:ASP:OD1	1:A:747:TYR:N	2.51	0.42
1:C:242:CYS:HB3	1:C:245:ILE:HG13	2.01	0.42
1:C:911:LEU:HD11	1:C:1146:LEU:HD22	2.01	0.42
1:B:1100:ILE:HA	1:B:1103:VAL:HG12	2.01	0.42
1:B:51:ILE:HD12	1:B:51:ILE:H	1.82	0.42
1:A:104:SER:OG	1:A:200:PHE:HB2	2.19	0.42
1:A:128:SER:O	1:A:233:SER:OG	2.29	0.42
1:C:271:ASP:OD1	1:C:275:VAL:N	2.53	0.42
1:C:875:LEU:HD21	1:C:968:VAL:HG11	2.02	0.42
1:B:247:SER:O	1:B:251:ASN:ND2	2.53	0.42
1:B:651:TYR:HB2	1:C:54:ARG:HB3	2.01	0.42
1:B:1186:ASP:O	1:B:1187:HIS:ND1	2.53	0.42
1:A:301:THR:HG23	1:A:684:HIS:HA	2.01	0.42
1:B:1125:ILE:HG22	1:B:1126:ASN:HD22	1.84	0.42
1:A:346:ARG:HH11	1:A:387:VAL:HG11	1.84	0.42
1:B:1134:ILE:HD11	1:B:1152:TYR:HB2	2.01	0.42
1:B:1168:ILE:HG13	1:B:1169:SER:H	1.85	0.42
1:A:151:CYS:SG	1:A:152:GLN:N	2.93	0.42
1:B:653:SER:HB3	1:C:59:THR:HG21	2.02	0.41
1:A:813:LYS:HE3	1:A:851:ASN:HB3	2.02	0.41
1:C:361:ARG:HH21	1:C:362:LEU:HA	1.84	0.41
1:B:108:ASN:OD1	1:B:119:SER:OG	2.23	0.41
1:B:675:TYR:CZ	1:B:697:LEU:HD11	2.55	0.41

Continued on next page...

Continued from previous page...

Atom-1	Atom-2	Interatomic distance (Å)	Clash overlap (Å)
1:B:658:ILE:HG23	1:C:935:ILE:HG21	2.02	0.41
1:A:137:ILE:HG12	1:A:150:ALA:HA	2.03	0.41
1:A:682:ALA:HB3	1:A:691:ALA:HB3	2.02	0.41
1:B:267:LEU:HB3	1:B:280:VAL:HB	2.02	0.41
1:C:104:SER:HA	1:C:257:TRP:O	2.21	0.41
1:C:865:LEU:HD23	1:C:1114:VAL:HG11	2.03	0.41
1:C:1177:LYS:HG2	1:C:1207:VAL:HG23	2.02	0.41
1:B:259:THR:HA	1:B:260:PRO:HD3	1.95	0.41
1:A:26:ASN:OD1	1:A:27:ASP:N	2.51	0.41
1:A:271:ASP:OD1	1:A:275:VAL:N	2.49	0.41
1:A:748:ASN:OD1	1:A:748:ASN:N	2.54	0.41
1:C:1096:GLN:O	1:C:1100:ILE:HG12	2.21	0.41
1:B:885:ASN:H	3:I:2:NAG:H62	1.86	0.41
1:A:474:CYS:SG	1:A:476:CYS:HB2	2.61	0.41
1:A:699:CYS:HA	1:A:702:VAL:HG12	2.01	0.41
1:A:104:SER:HA	1:A:257:TRP:O	2.21	0.41
1:A:131:ILE:HG22	1:A:132:ASN:H	1.86	0.41
1:B:80:LYS:HZ3	1:B:245:ILE:HB	1.86	0.40
1:B:121:PHE:HZ	1:B:146:LEU:HD11	1.85	0.40
1:A:1113:LYS:HE3	1:A:1113:LYS:HB2	1.96	0.40
1:C:832:LEU:HD11	1:C:1075:GLN:HG3	2.03	0.40
1:B:1162:VAL:HB	1:B:1180:TYR:HB3	2.04	0.40
1:C:267:LEU:HB3	1:C:280:VAL:HB	2.03	0.40
1:B:1111:MET:HB3	1:B:1111:MET:HE2	1.98	0.40
1:A:90:TYR:HE2	1:A:159:PRO:HD2	1.85	0.40
1:A:781:ASP:OD2	1:A:793:LYS:NZ	2.53	0.40

There are no symmetry-related clashes.

5.3 Torsion angles [\(i\)](#)

5.3.1 Protein backbone [\(i\)](#)

In the following table, the Percentiles column shows the percent Ramachandran outliers of the chain as a percentile score with respect to all PDB entries followed by that with respect to all EM entries.

The Analysed column shows the number of residues for which the backbone conformation was analysed, and the total number of residues.

Mol	Chain	Analysed	Favoured	Allowed	Outliers	Percentiles	
1	A	1194/1268 (94%)	1146 (96%)	48 (4%)	0	100	100
1	B	1192/1268 (94%)	1158 (97%)	34 (3%)	0	100	100
1	C	1192/1268 (94%)	1150 (96%)	42 (4%)	0	100	100
2	x	234/383 (61%)	219 (94%)	15 (6%)	0	100	100
2	y	234/383 (61%)	221 (94%)	13 (6%)	0	100	100
2	z	234/383 (61%)	220 (94%)	14 (6%)	0	100	100
All	All	4280/4953 (86%)	4114 (96%)	166 (4%)	0	100	100

There are no Ramachandran outliers to report.

5.3.2 Protein sidechains [i](#)

In the following table, the Percentiles column shows the percent sidechain outliers of the chain as a percentile score with respect to all PDB entries followed by that with respect to all EM entries.

The Analysed column shows the number of residues for which the sidechain conformation was analysed, and the total number of residues.

Mol	Chain	Analysed	Rotameric	Outliers	Percentiles	
1	A	1051/1141 (92%)	1029 (98%)	22 (2%)	53	79
1	B	1051/1141 (92%)	1029 (98%)	22 (2%)	53	79
1	C	1047/1141 (92%)	1029 (98%)	18 (2%)	60	83
2	x	132/325 (41%)	130 (98%)	2 (2%)	65	85
2	y	133/325 (41%)	130 (98%)	3 (2%)	50	77
2	z	133/325 (41%)	131 (98%)	2 (2%)	65	85
All	All	3547/4398 (81%)	3478 (98%)	69 (2%)	59	81

All (69) residues with a non-rotameric sidechain are listed below:

Mol	Chain	Res	Type
1	B	42	VAL
1	B	46	LEU
1	B	160	HIS
1	B	198	LEU
1	B	213	TYR
1	B	227	TYR
1	B	382	CYS

Continued on next page...

Continued from previous page...

Mol	Chain	Res	Type
1	B	476	CYS
1	B	495	CYS
1	B	499	THR
1	B	591	PHE
1	B	605	CYS
1	B	651	TYR
1	B	699	CYS
1	B	730	TYR
1	B	775	ASN
1	B	786	VAL
1	B	818	CYS
1	B	894	CYS
1	B	937	ASP
1	B	1075	GLN
1	B	1159	THR
1	A	21	THR
1	A	42	VAL
1	A	51	ILE
1	A	83	THR
1	A	115	LYS
1	A	116	THR
1	A	198	LEU
1	A	213	TYR
1	A	220	THR
1	A	287	PHE
1	A	327	CYS
1	A	387	VAL
1	A	476	CYS
1	A	499	THR
1	A	509	VAL
1	A	699	CYS
1	A	710	THR
1	A	715	ASP
1	A	744	CYS
1	A	898	HIS
1	A	1159	THR
1	A	1172	VAL
1	C	46	LEU
1	C	64	THR
1	C	83	THR
1	C	183	CYS
1	C	213	TYR

Continued on next page...

Continued from previous page...

Mol	Chain	Res	Type
1	C	220	THR
1	C	227	TYR
1	C	287	PHE
1	C	361	ARG
1	C	373	PHE
1	C	499	THR
1	C	604	THR
1	C	674	CYS
1	C	820	LEU
1	C	832	LEU
1	C	838	THR
1	C	839	PHE
1	C	911	LEU
2	x	387	THR
2	x	393	THR
2	y	387	THR
2	y	393	THR
2	y	415	VAL
2	z	393	THR
2	z	424	MET

Sometimes sidechains can be flipped to improve hydrogen bonding and reduce clashes. All (47) such sidechains are listed below:

Mol	Chain	Res	Type
1	B	29	ASN
1	B	175	HIS
1	B	243	ASN
1	B	251	ASN
1	B	265	GLN
1	B	402	GLN
1	B	424	GLN
1	B	445	ASN
1	B	589	ASN
1	B	711	GLN
1	B	803	GLN
1	B	878	ASN
1	B	988	GLN
1	B	992	ASN
1	B	1126	ASN
1	B	1130	ASN
1	B	1178	GLN
1	A	132	ASN

Continued on next page...

Continued from previous page...

Mol	Chain	Res	Type
1	A	234	HIS
1	A	445	ASN
1	A	644	ASN
1	A	684	HIS
1	A	803	GLN
1	A	825	ASN
1	A	860	HIS
1	A	880	HIS
1	A	988	GLN
1	A	992	ASN
1	A	1053	ASN
1	A	1095	GLN
1	C	29	ASN
1	C	142	HIS
1	C	265	GLN
1	C	351	ASN
1	C	711	GLN
1	C	830	HIS
1	C	860	HIS
1	C	988	GLN
1	C	992	ASN
1	C	1020	GLN
1	C	1075	GLN
1	C	1083	ASN
2	x	334	HIS
2	x	377	GLN
2	y	377	GLN
2	z	334	HIS
2	z	408	GLN

5.3.3 RNA [i](#)

There are no RNA molecules in this entry.

5.4 Non-standard residues in protein, DNA, RNA chains [i](#)

There are no non-standard protein/DNA/RNA residues in this entry.

5.5 Carbohydrates [i](#)

20 monosaccharides are modelled in this entry.

In the following table, the Counts columns list the number of bonds (or angles) for which Mogul statistics could be retrieved, the number of bonds (or angles) that are observed in the model and the number of bonds (or angles) that are defined in the Chemical Component Dictionary. The Link column lists molecule types, if any, to which the group is linked. The Z score for a bond length (or angle) is the number of standard deviations the observed value is removed from the expected value. A bond length (or angle) with $|Z| > 2$ is considered an outlier worth inspection. RMSZ is the root-mean-square of all Z scores of the bond lengths (or angles).

Mol	Type	Chain	Res	Link	Bond lengths			Bond angles		
					Counts	RMSZ	# Z > 2	Counts	RMSZ	# Z > 2
3	NAG	D	1	3,1	14,14,15	0.21	0	17,19,21	0.42	0
3	NAG	D	2	3	14,14,15	0.23	0	17,19,21	0.41	0
3	NAG	E	1	3,1	14,14,15	0.23	0	17,19,21	0.45	0
3	NAG	E	2	3	14,14,15	0.25	0	17,19,21	0.41	0
3	NAG	F	1	3,1	14,14,15	0.21	0	17,19,21	0.41	0
3	NAG	F	2	3	14,14,15	0.23	0	17,19,21	0.41	0
3	NAG	G	1	3,1	14,14,15	0.21	0	17,19,21	0.46	0
3	NAG	G	2	3	14,14,15	0.23	0	17,19,21	0.43	0
3	NAG	H	1	3,1	14,14,15	0.25	0	17,19,21	0.57	0
3	NAG	H	2	3	14,14,15	0.22	0	17,19,21	0.41	0
3	NAG	I	1	3,1	14,14,15	0.22	0	17,19,21	0.41	0
3	NAG	I	2	3	14,14,15	0.24	0	17,19,21	0.42	0
3	NAG	J	1	3,1	14,14,15	0.21	0	17,19,21	0.43	0
3	NAG	J	2	3	14,14,15	0.22	0	17,19,21	0.42	0
3	NAG	K	1	3,1	14,14,15	0.25	0	17,19,21	0.57	0
3	NAG	K	2	3	14,14,15	0.22	0	17,19,21	0.41	0
3	NAG	L	1	3,1	14,14,15	0.22	0	17,19,21	0.42	0
3	NAG	L	2	3	14,14,15	0.25	0	17,19,21	0.41	0
3	NAG	M	1	3,1	14,14,15	0.21	0	17,19,21	0.42	0
3	NAG	M	2	3	14,14,15	0.22	0	17,19,21	0.42	0

In the following table, the Chirals column lists the number of chiral outliers, the number of chiral centers analysed, the number of these observed in the model and the number defined in the Chemical Component Dictionary. Similar counts are reported in the Torsion and Rings columns. '-' means no outliers of that kind were identified.

Mol	Type	Chain	Res	Link	Chirals	Torsions	Rings
3	NAG	D	1	3,1	-	0/6/23/26	0/1/1/1
3	NAG	D	2	3	-	0/6/23/26	0/1/1/1
3	NAG	E	1	3,1	-	0/6/23/26	0/1/1/1
3	NAG	E	2	3	-	2/6/23/26	0/1/1/1
3	NAG	F	1	3,1	-	0/6/23/26	0/1/1/1
3	NAG	F	2	3	-	0/6/23/26	0/1/1/1
3	NAG	G	1	3,1	-	0/6/23/26	0/1/1/1
3	NAG	G	2	3	-	0/6/23/26	0/1/1/1

Continued on next page...

Continued from previous page...

Mol	Type	Chain	Res	Link	Chirals	Torsions	Rings
3	NAG	H	1	3,1	-	1/6/23/26	0/1/1/1
3	NAG	H	2	3	-	0/6/23/26	0/1/1/1
3	NAG	I	1	3,1	-	0/6/23/26	0/1/1/1
3	NAG	I	2	3	-	2/6/23/26	0/1/1/1
3	NAG	J	1	3,1	-	0/6/23/26	0/1/1/1
3	NAG	J	2	3	-	0/6/23/26	0/1/1/1
3	NAG	K	1	3,1	-	1/6/23/26	0/1/1/1
3	NAG	K	2	3	-	0/6/23/26	0/1/1/1
3	NAG	L	1	3,1	-	0/6/23/26	0/1/1/1
3	NAG	L	2	3	-	0/6/23/26	0/1/1/1
3	NAG	M	1	3,1	-	0/6/23/26	0/1/1/1
3	NAG	M	2	3	-	0/6/23/26	0/1/1/1

There are no bond length outliers.

There are no bond angle outliers.

There are no chirality outliers.

All (6) torsion outliers are listed below:

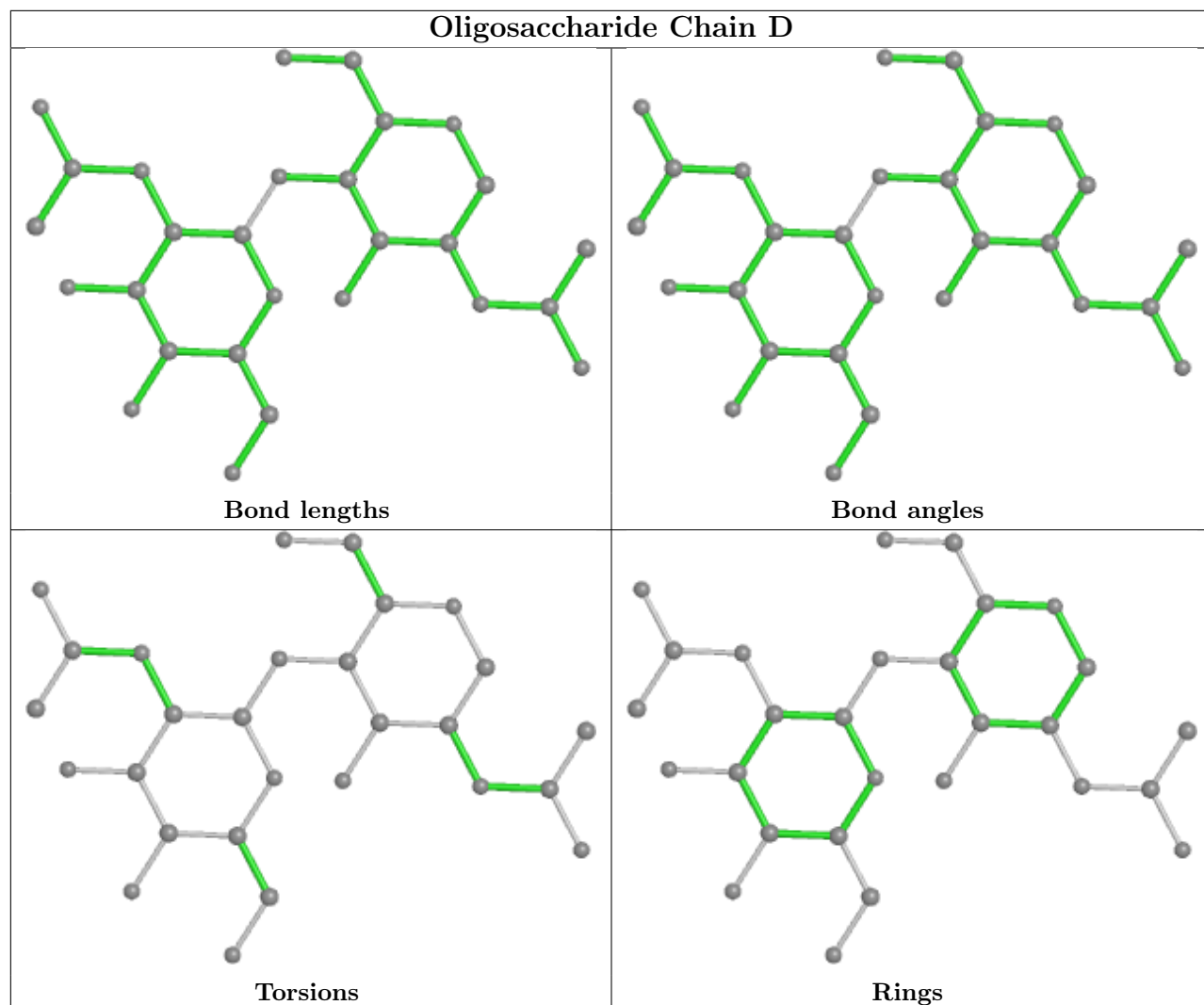
Mol	Chain	Res	Type	Atoms
3	I	2	NAG	C4-C5-C6-O6
3	H	1	NAG	C3-C2-N2-C7
3	K	1	NAG	C3-C2-N2-C7
3	E	2	NAG	C4-C5-C6-O6
3	E	2	NAG	O5-C5-C6-O6
3	I	2	NAG	O5-C5-C6-O6

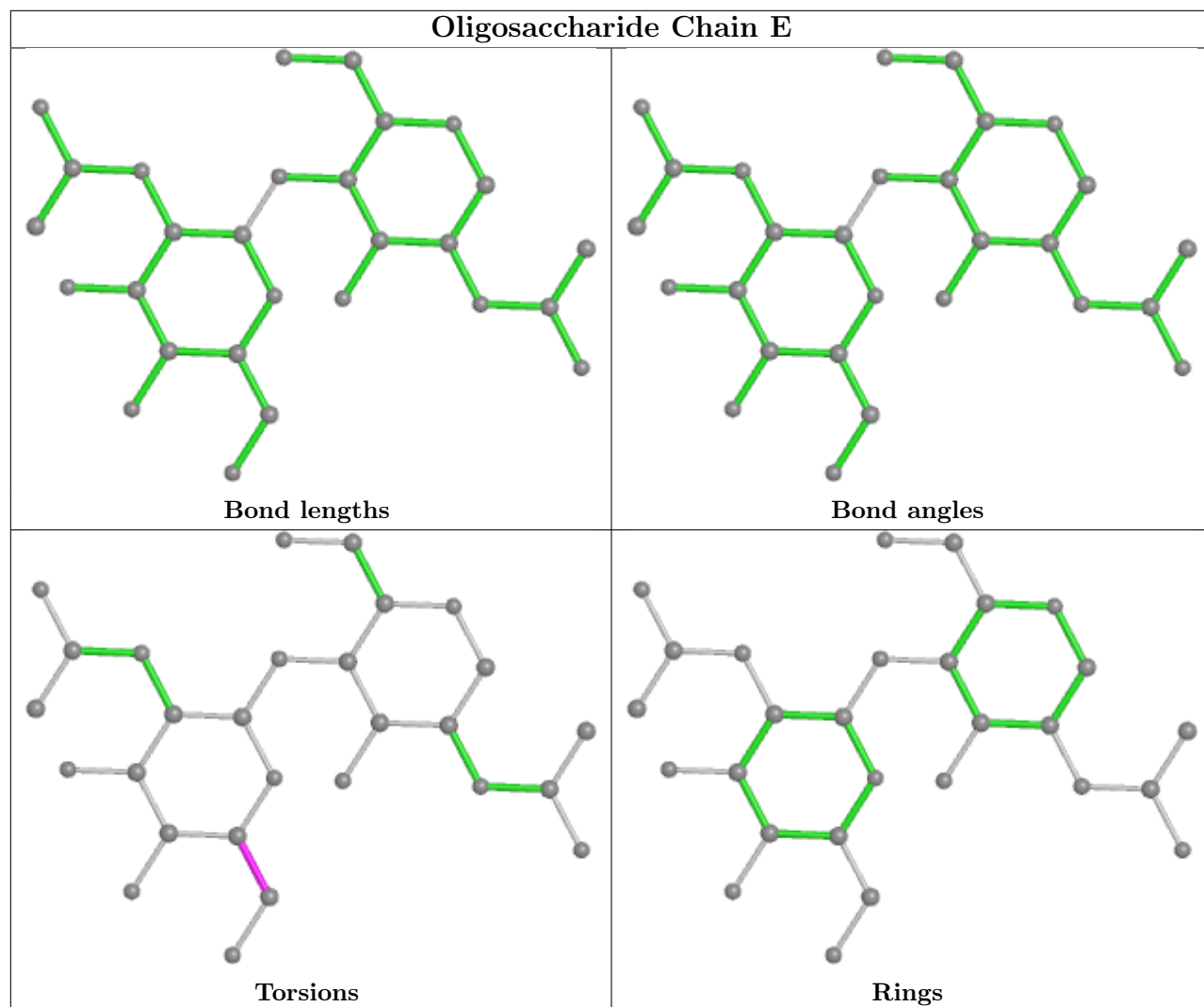
There are no ring outliers.

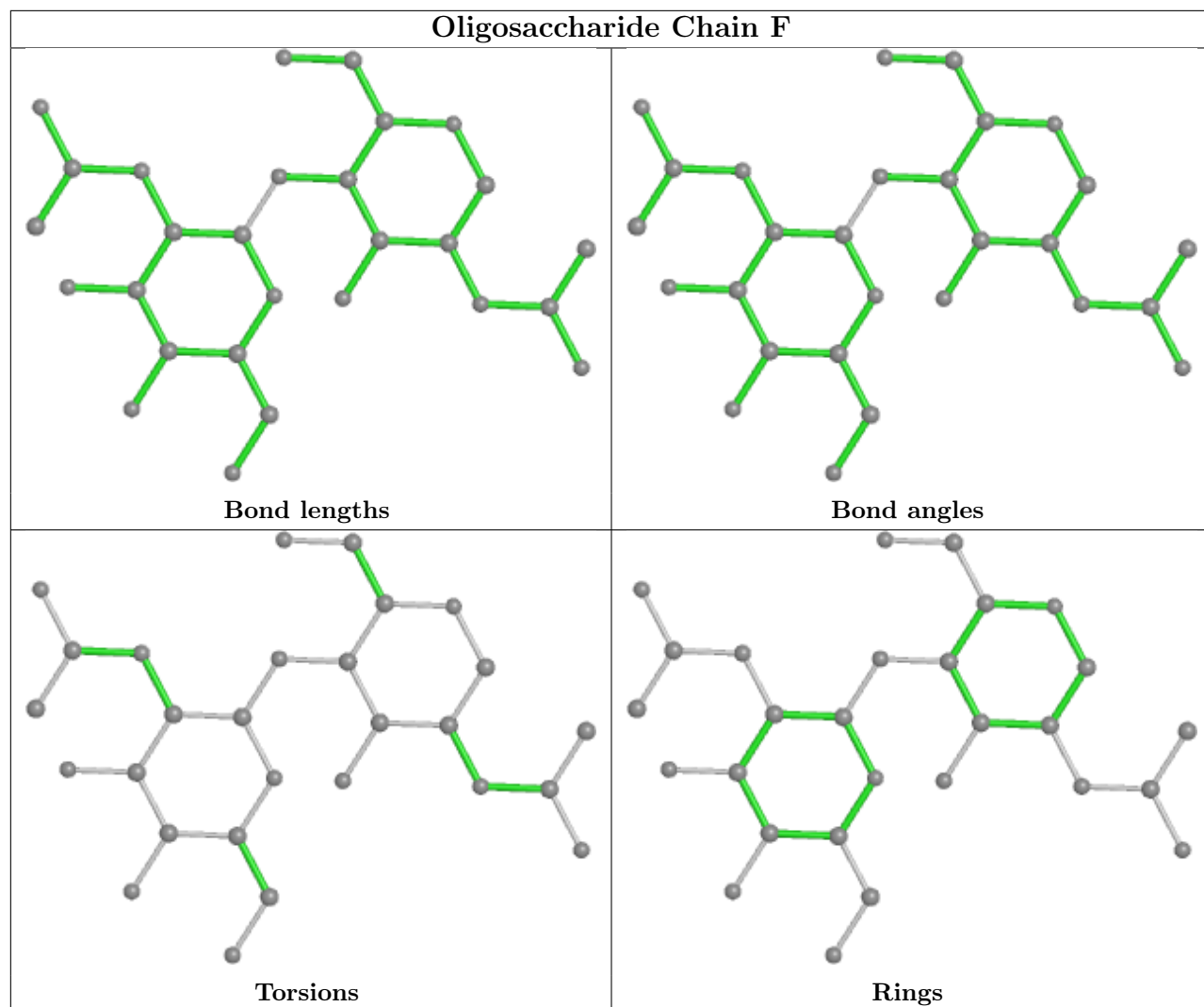
1 monomer is involved in 1 short contact:

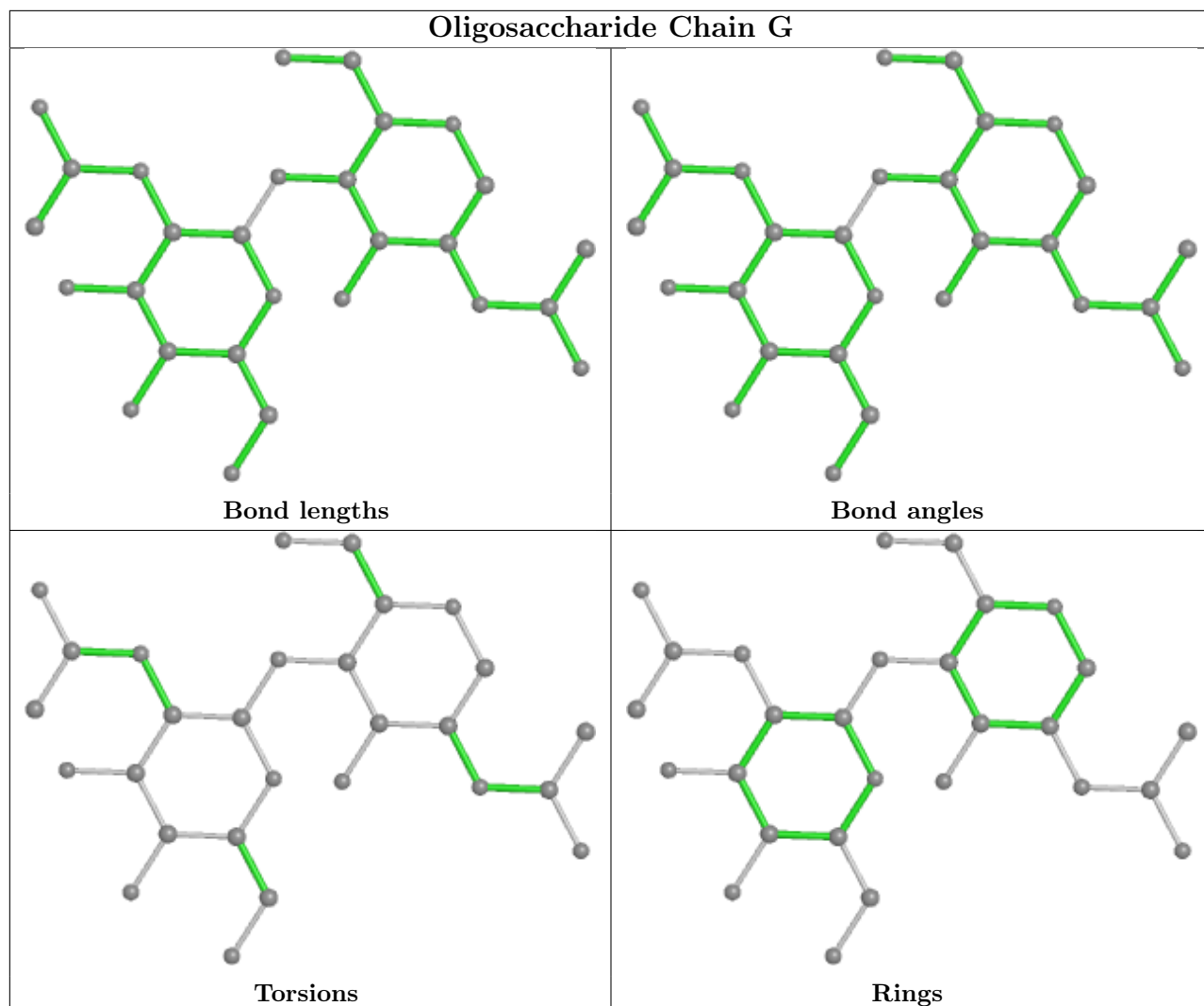
Mol	Chain	Res	Type	Clashes	Symm-Clashes
3	I	2	NAG	1	0

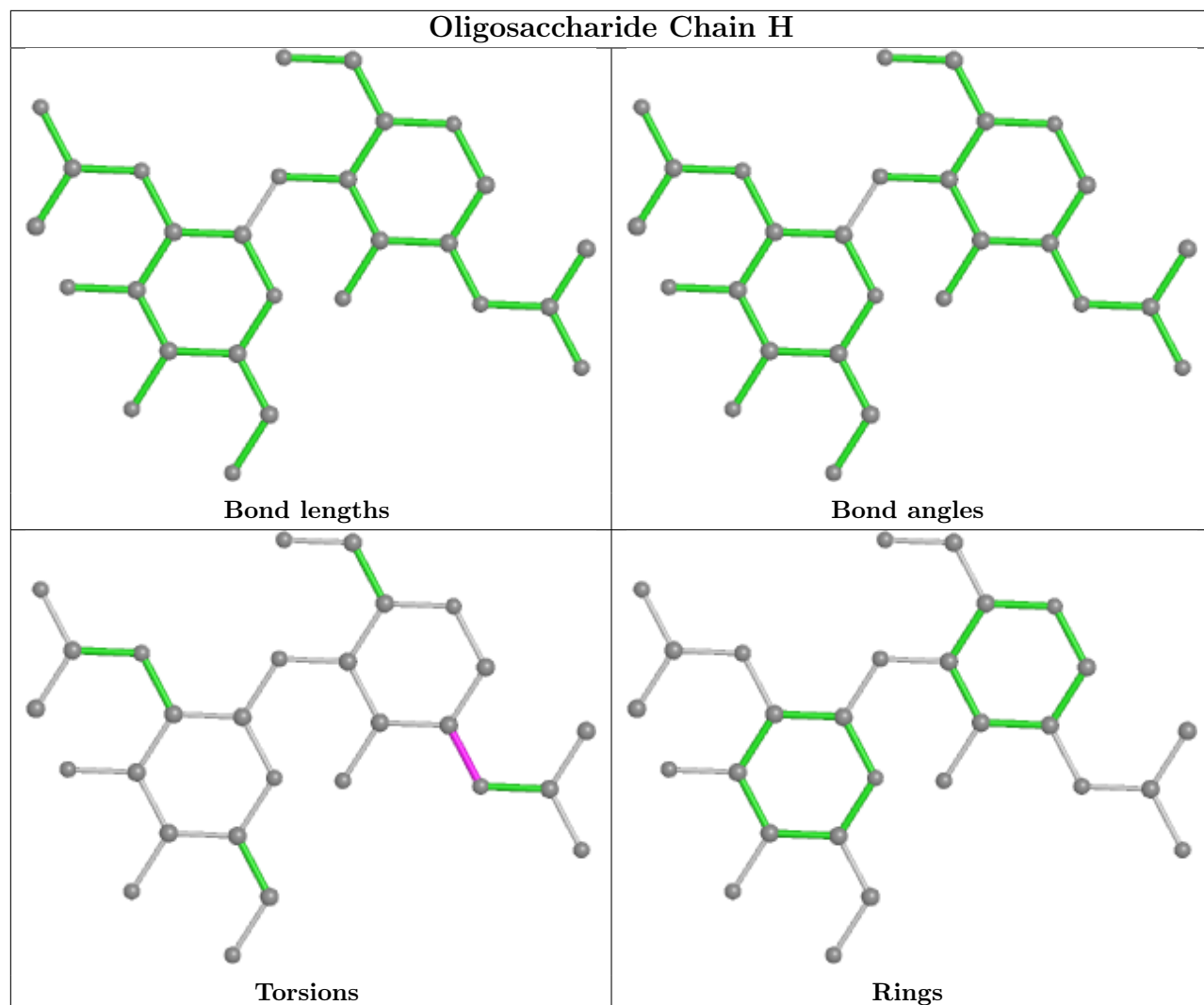
The following is a two-dimensional graphical depiction of Mogul quality analysis of bond lengths, bond angles, torsion angles, and ring geometry for oligosaccharide.

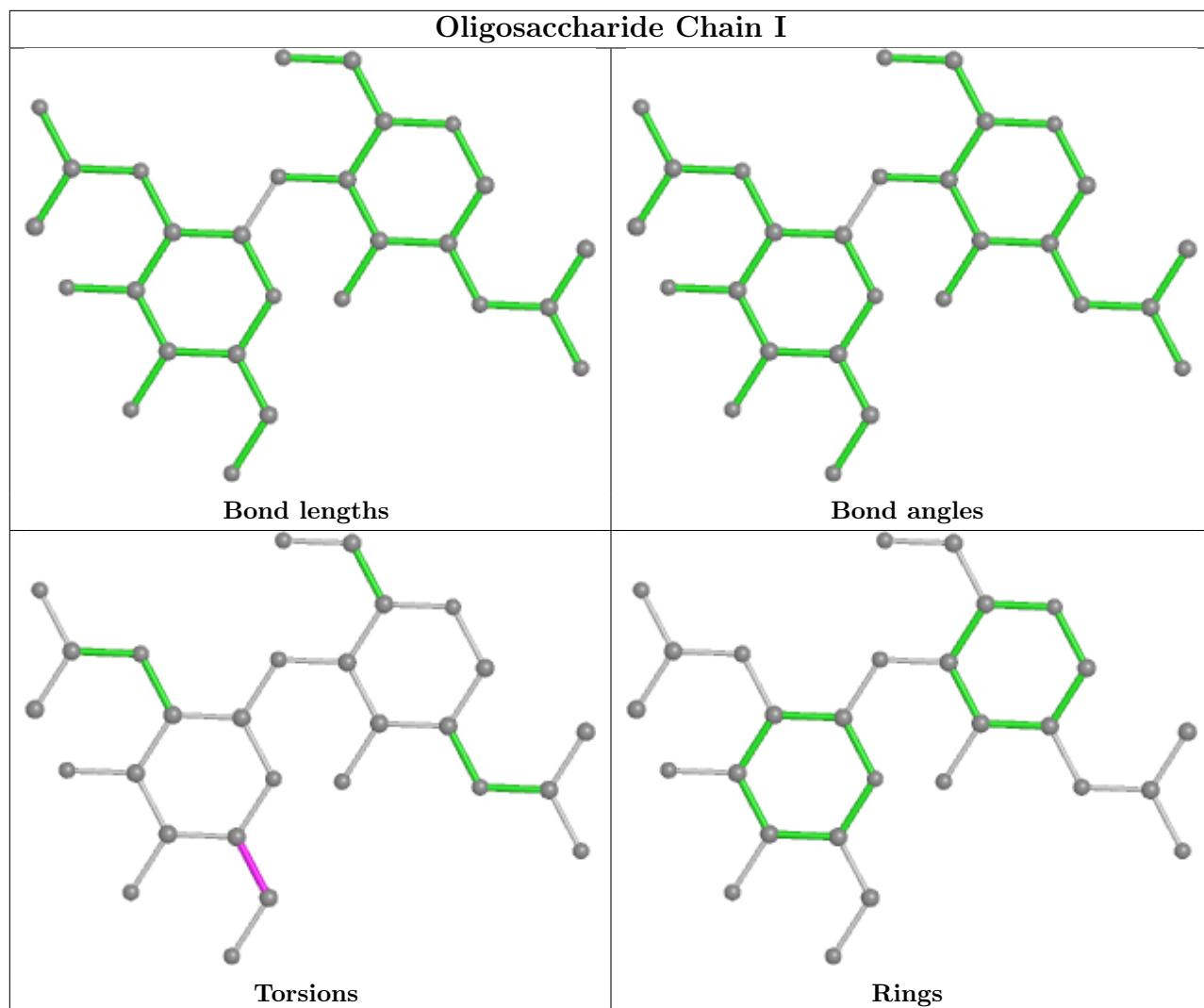


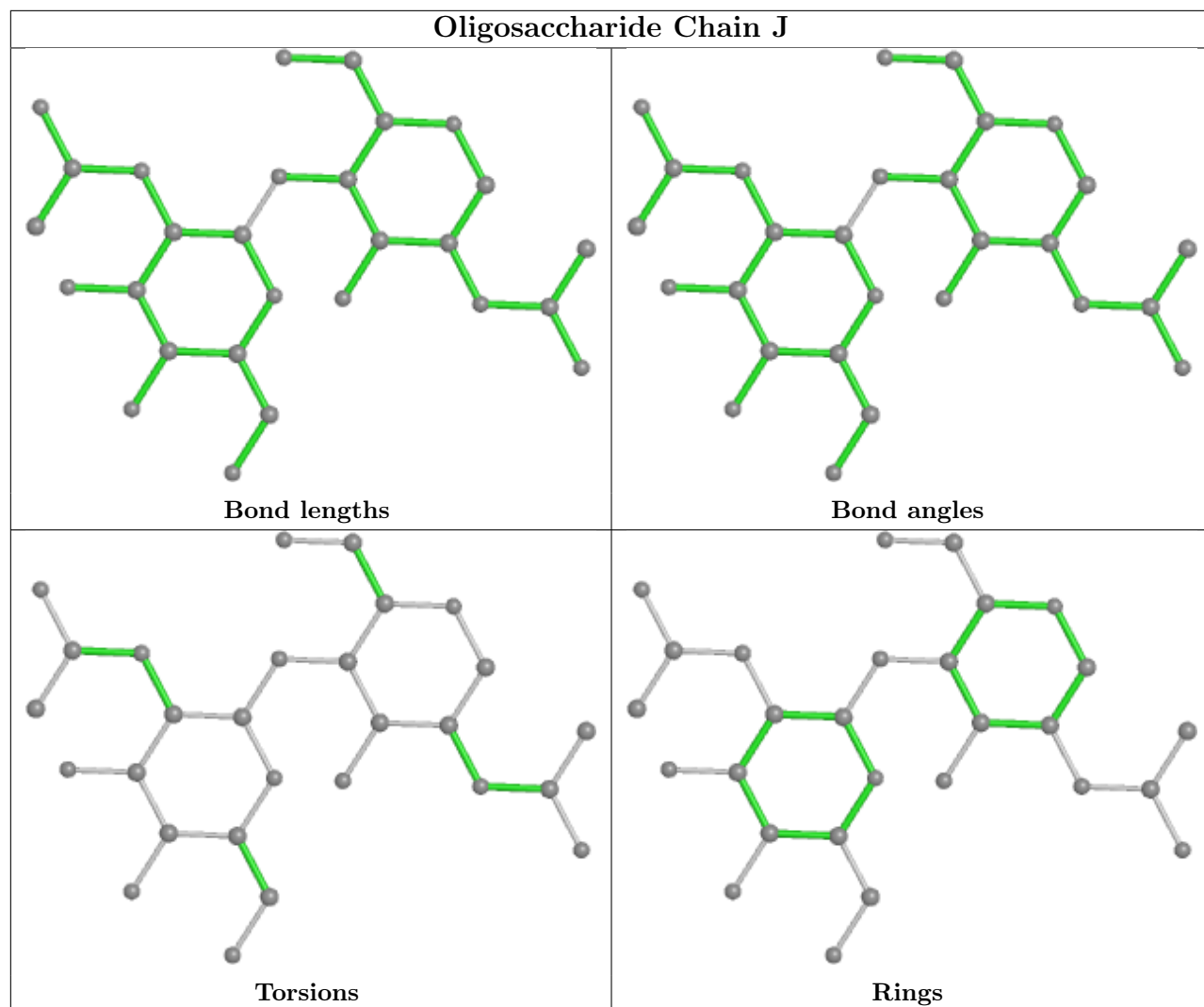


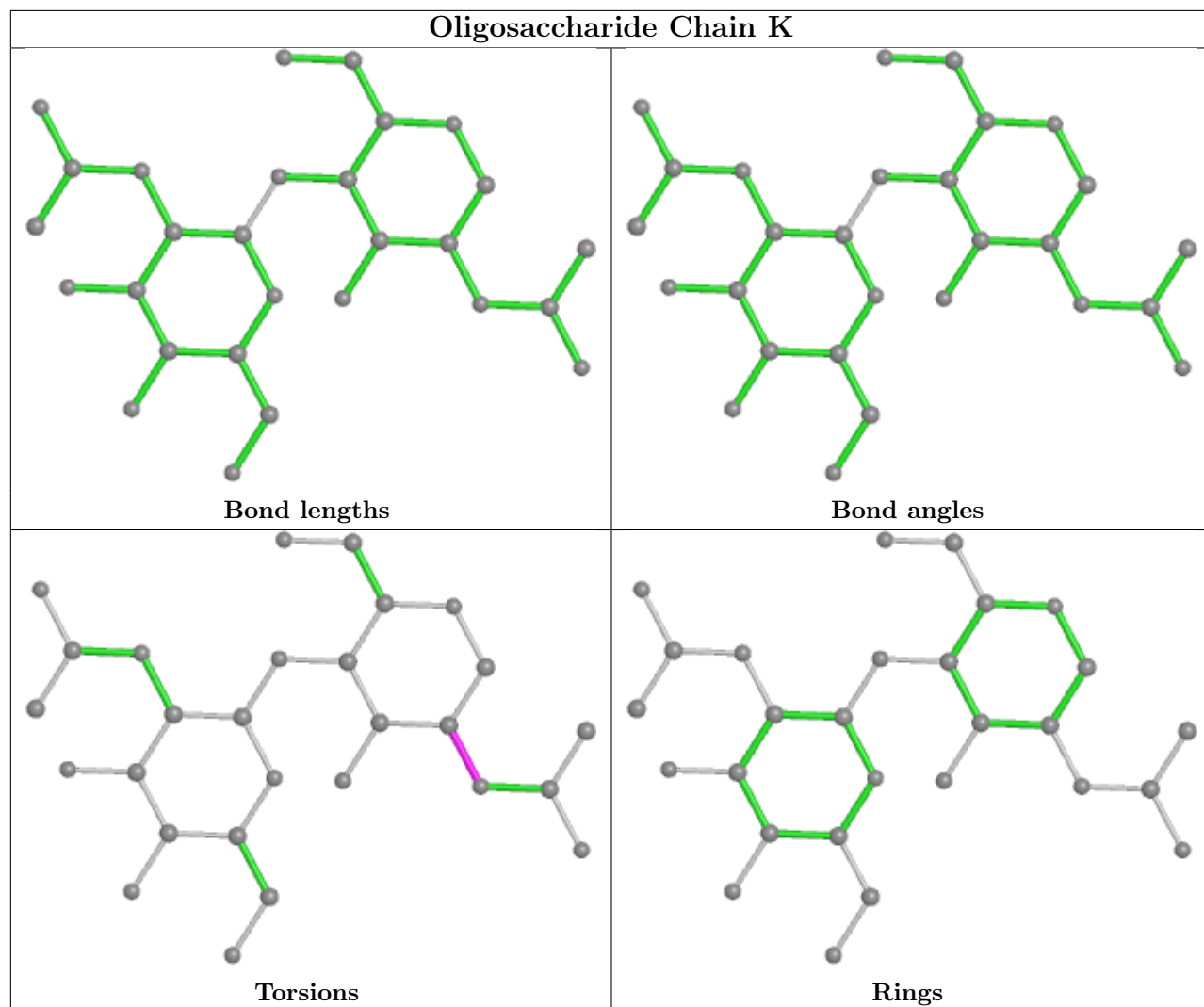


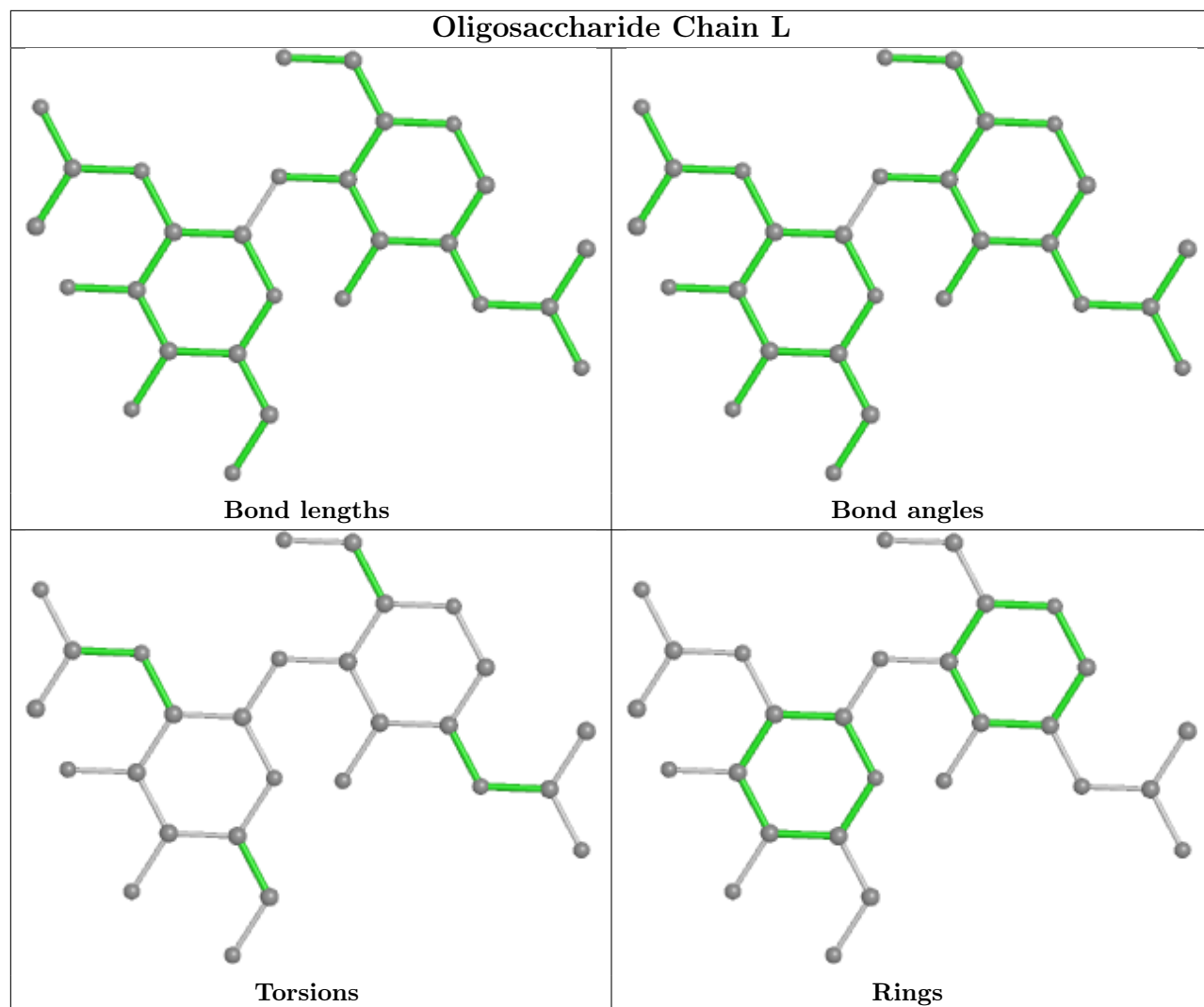


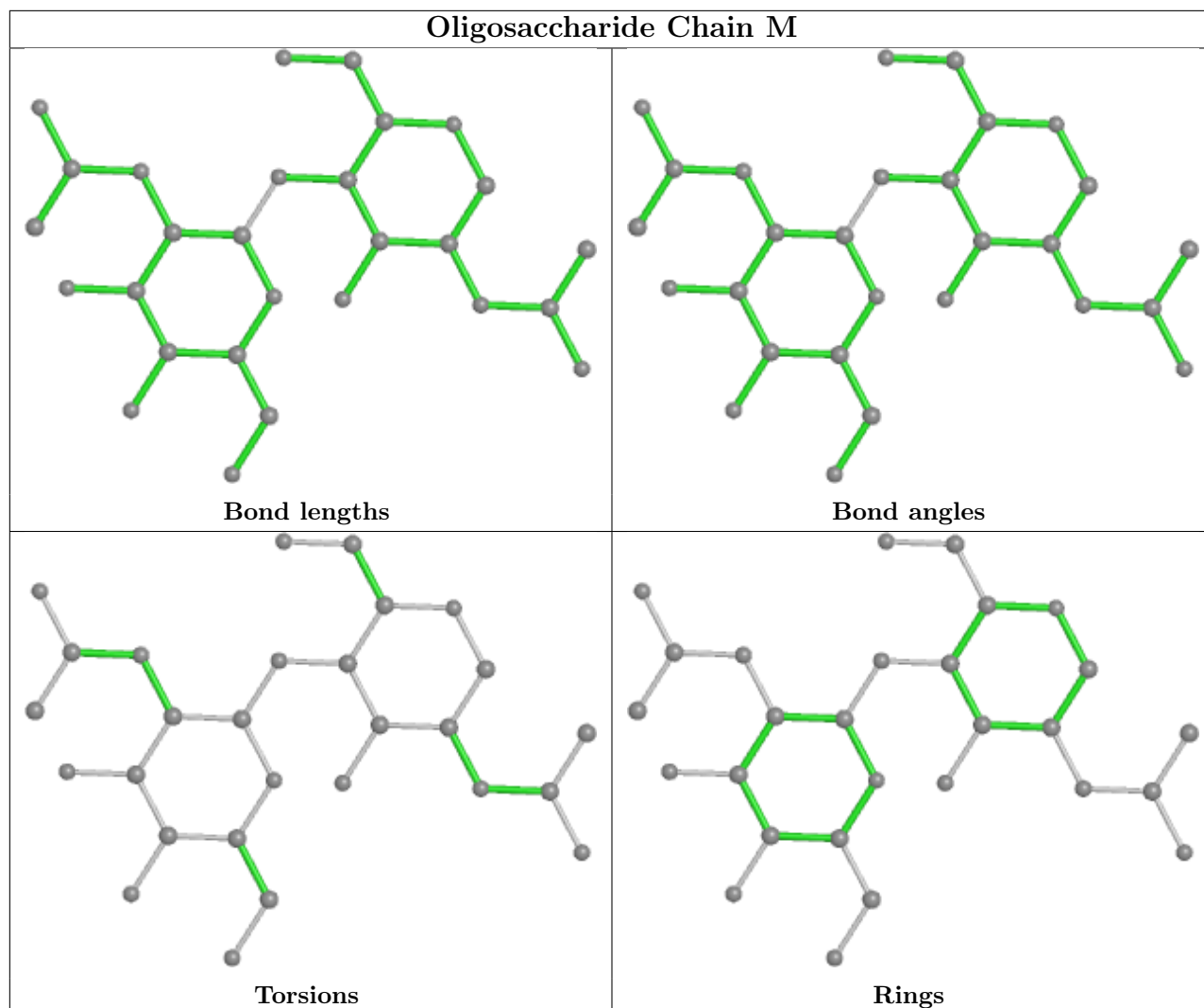












5.6 Ligand geometry [i](#)

23 ligands are modelled in this entry.

In the following table, the Counts columns list the number of bonds (or angles) for which Mogul statistics could be retrieved, the number of bonds (or angles) that are observed in the model and the number of bonds (or angles) that are defined in the Chemical Component Dictionary. The Link column lists molecule types, if any, to which the group is linked. The Z score for a bond length (or angle) is the number of standard deviations the observed value is removed from the expected value. A bond length (or angle) with $|Z| > 2$ is considered an outlier worth inspection. RMSZ is the root-mean-square of all Z scores of the bond lengths (or angles).

Mol	Type	Chain	Res	Link	Bond lengths			Bond angles		
					Counts	RMSZ	$\# Z > 2$	Counts	RMSZ	$\# Z > 2$
4	NAG	C	1301	1	14,14,15	0.22	0	17,19,21	0.42	0
4	NAG	B	1308	1	14,14,15	0.21	0	17,19,21	0.43	0
4	NAG	A	1302	1	14,14,15	0.23	0	17,19,21	0.42	0
4	NAG	C	1307	1	14,14,15	0.23	0	17,19,21	0.43	0

Mol	Type	Chain	Res	Link	Bond lengths			Bond angles		
					Counts	RMSZ	# Z > 2	Counts	RMSZ	# Z > 2
4	NAG	B	1303	1	14,14,15	0.21	0	17,19,21	0.43	0
4	NAG	C	1302	1	14,14,15	0.22	0	17,19,21	0.42	0
4	NAG	B	1304	1	14,14,15	0.44	0	17,19,21	1.26	1 (5%)
4	NAG	A	1308	1	14,14,15	0.22	0	17,19,21	0.41	0
4	NAG	A	1301	1	14,14,15	0.21	0	17,19,21	0.43	0
4	NAG	A	1303	1	14,14,15	0.22	0	17,19,21	0.43	0
4	NAG	B	1301	1	14,14,15	0.21	0	17,19,21	0.42	0
4	NAG	B	1305	1	14,14,15	0.21	0	17,19,21	0.40	0
4	NAG	A	1304	1	14,14,15	0.20	0	17,19,21	0.44	0
4	NAG	C	1303	1	14,14,15	0.21	0	17,19,21	0.42	0
4	NAG	A	1305	1	14,14,15	0.21	0	17,19,21	0.42	0
4	NAG	C	1304	1	14,14,15	0.22	0	17,19,21	0.39	0
4	NAG	A	1306	1	14,14,15	0.22	0	17,19,21	0.42	0
4	NAG	B	1307	1	14,14,15	0.21	0	17,19,21	0.43	0
4	NAG	C	1305	1	14,14,15	0.22	0	17,19,21	0.42	0
4	NAG	B	1302	1	14,14,15	0.21	0	17,19,21	0.41	0
4	NAG	C	1306	1	14,14,15	0.23	0	17,19,21	0.43	0
4	NAG	B	1306	1	14,14,15	0.22	0	17,19,21	0.42	0
4	NAG	A	1307	1	14,14,15	0.22	0	17,19,21	0.41	0

In the following table, the Chirals column lists the number of chiral outliers, the number of chiral centers analysed, the number of these observed in the model and the number defined in the Chemical Component Dictionary. Similar counts are reported in the Torsion and Rings columns. '-' means no outliers of that kind were identified.

Mol	Type	Chain	Res	Link	Chirals	Torsions	Rings
4	NAG	C	1301	1	-	2/6/23/26	0/1/1/1
4	NAG	B	1308	1	-	0/6/23/26	0/1/1/1
4	NAG	A	1302	1	-	2/6/23/26	0/1/1/1
4	NAG	C	1307	1	-	2/6/23/26	0/1/1/1
4	NAG	B	1303	1	-	0/6/23/26	0/1/1/1
4	NAG	C	1302	1	-	2/6/23/26	0/1/1/1
4	NAG	B	1304	1	-	3/6/23/26	0/1/1/1
4	NAG	A	1308	1	-	0/6/23/26	0/1/1/1
4	NAG	A	1301	1	-	1/6/23/26	0/1/1/1
4	NAG	A	1303	1	-	2/6/23/26	0/1/1/1
4	NAG	B	1301	1	-	0/6/23/26	0/1/1/1
4	NAG	B	1305	1	-	0/6/23/26	0/1/1/1
4	NAG	A	1304	1	-	1/6/23/26	0/1/1/1
4	NAG	C	1303	1	-	0/6/23/26	0/1/1/1
4	NAG	A	1305	1	-	1/6/23/26	0/1/1/1

Continued on next page...

Continued from previous page...

Mol	Type	Chain	Res	Link	Chirals	Torsions	Rings
4	NAG	C	1304	1	-	2/6/23/26	0/1/1/1
4	NAG	A	1306	1	-	2/6/23/26	0/1/1/1
4	NAG	B	1307	1	-	2/6/23/26	0/1/1/1
4	NAG	C	1305	1	-	0/6/23/26	0/1/1/1
4	NAG	B	1302	1	-	2/6/23/26	0/1/1/1
4	NAG	C	1306	1	-	0/6/23/26	0/1/1/1
4	NAG	B	1306	1	-	1/6/23/26	0/1/1/1
4	NAG	A	1307	1	-	0/6/23/26	0/1/1/1

There are no bond length outliers.

All (1) bond angle outliers are listed below:

Mol	Chain	Res	Type	Atoms	Z	Observed(°)	Ideal(°)
4	B	1304	NAG	C2-N2-C7	4.26	128.97	122.90

There are no chirality outliers.

All (25) torsion outliers are listed below:

Mol	Chain	Res	Type	Atoms
4	C	1304	NAG	C4-C5-C6-O6
4	C	1301	NAG	O5-C5-C6-O6
4	C	1304	NAG	O5-C5-C6-O6
4	B	1304	NAG	C8-C7-N2-C2
4	B	1304	NAG	O7-C7-N2-C2
4	C	1302	NAG	O5-C5-C6-O6
4	C	1301	NAG	C4-C5-C6-O6
4	A	1302	NAG	O5-C5-C6-O6
4	B	1302	NAG	O5-C5-C6-O6
4	C	1302	NAG	C4-C5-C6-O6
4	B	1302	NAG	C4-C5-C6-O6
4	A	1302	NAG	C4-C5-C6-O6
4	A	1306	NAG	O5-C5-C6-O6
4	A	1306	NAG	C4-C5-C6-O6
4	C	1307	NAG	C4-C5-C6-O6
4	C	1307	NAG	O5-C5-C6-O6
4	A	1304	NAG	O5-C5-C6-O6
4	B	1306	NAG	O5-C5-C6-O6
4	A	1301	NAG	O5-C5-C6-O6
4	B	1307	NAG	C4-C5-C6-O6
4	A	1303	NAG	C4-C5-C6-O6

Continued on next page...

Continued from previous page...

Mol	Chain	Res	Type	Atoms
4	B	1307	NAG	O5-C5-C6-O6
4	A	1303	NAG	O5-C5-C6-O6
4	A	1305	NAG	C4-C5-C6-O6
4	B	1304	NAG	C3-C2-N2-C7

There are no ring outliers.

1 monomer is involved in 1 short contact:

Mol	Chain	Res	Type	Clashes	Symm-Clashes
4	B	1304	NAG	1	0

5.7 Other polymers [i](#)

There are no such residues in this entry.

5.8 Polymer linkage issues [i](#)

There are no chain breaks in this entry.

6 Map visualisation [i](#)

This section contains visualisations of the EMDB entry EMD-39025. These allow visual inspection of the internal detail of the map and identification of artifacts.

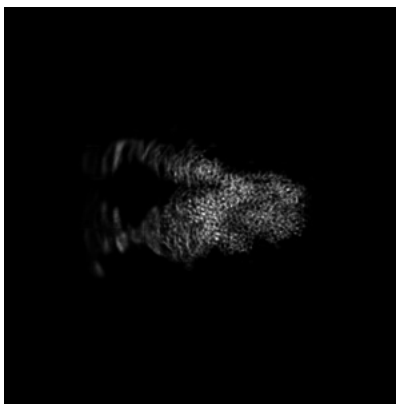
Images derived from a raw map, generated by summing the deposited half-maps, are presented below the corresponding image components of the primary map to allow further visual inspection and comparison with those of the primary map.

6.1 Orthogonal projections [i](#)

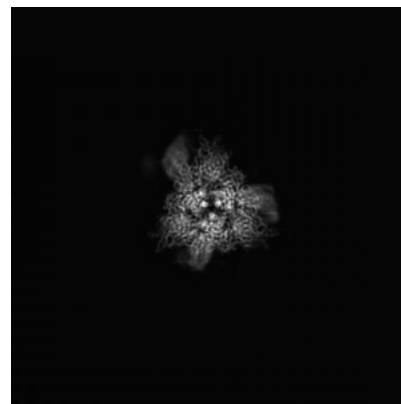
6.1.1 Primary map



X

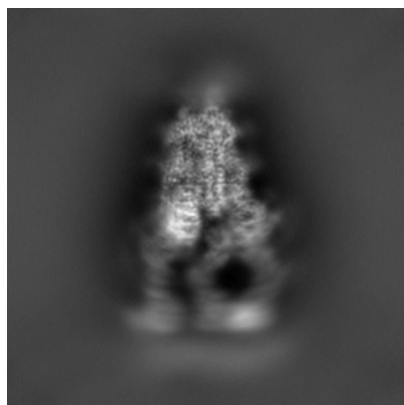


Y

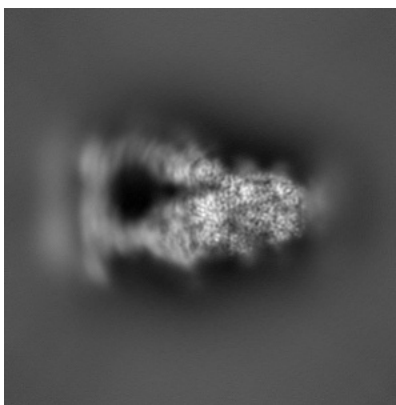


Z

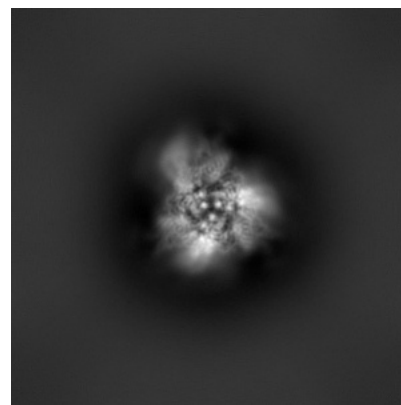
6.1.2 Raw map



X



Y



Z

The images above show the map projected in three orthogonal directions.

6.2 Central slices [i](#)

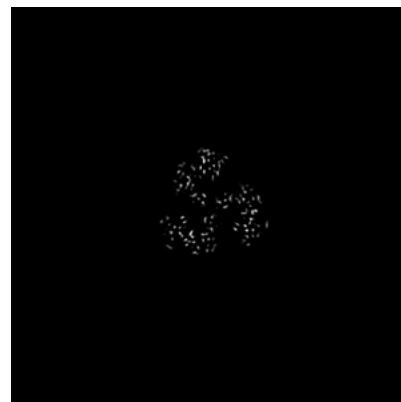
6.2.1 Primary map



X Index: 240

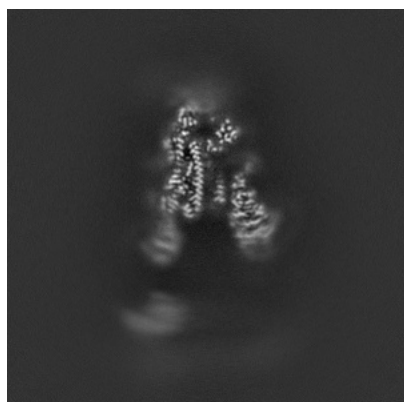


Y Index: 240

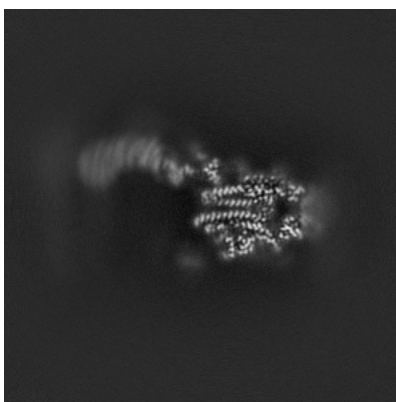


Z Index: 240

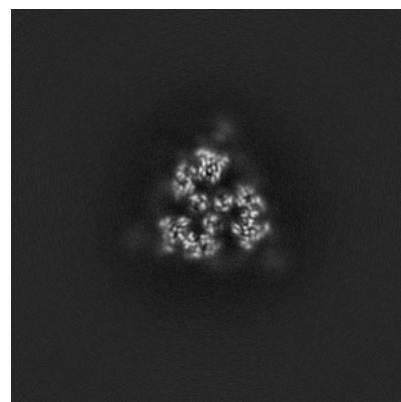
6.2.2 Raw map



X Index: 240



Y Index: 240



Z Index: 240

The images above show central slices of the map in three orthogonal directions.

6.3 Largest variance slices [i](#)

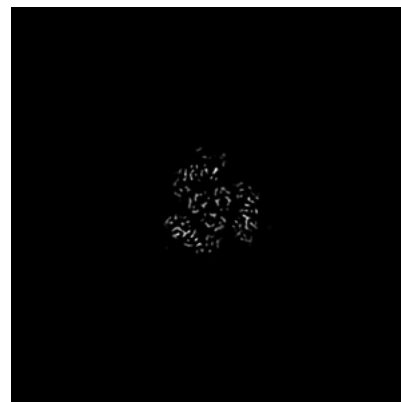
6.3.1 Primary map



X Index: 228

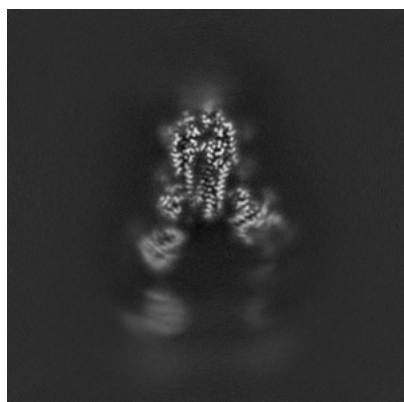


Y Index: 245

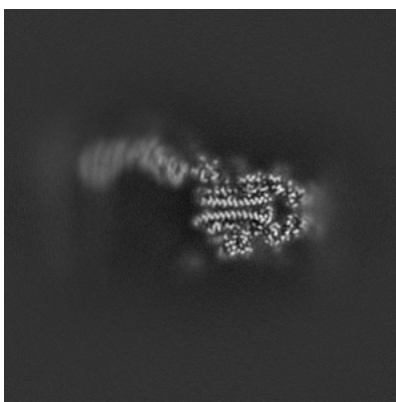


Z Index: 245

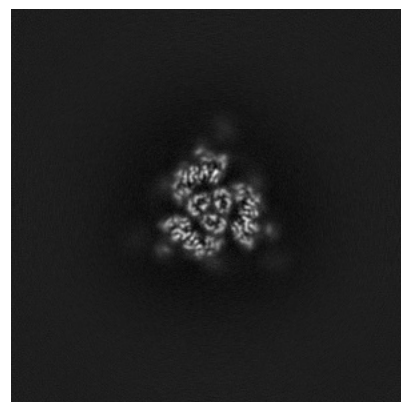
6.3.2 Raw map



X Index: 228



Y Index: 244

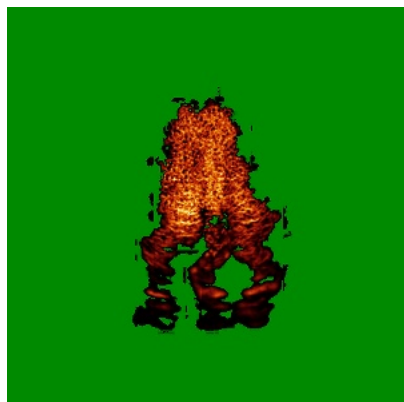


Z Index: 245

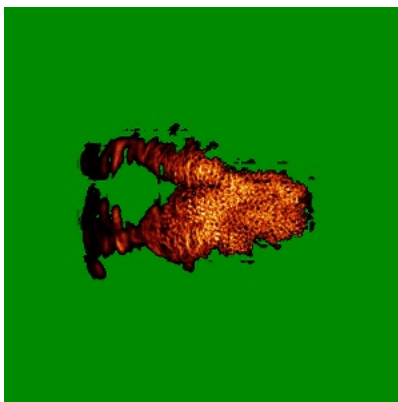
The images above show the largest variance slices of the map in three orthogonal directions.

6.4 Orthogonal standard-deviation projections (False-color) [i](#)

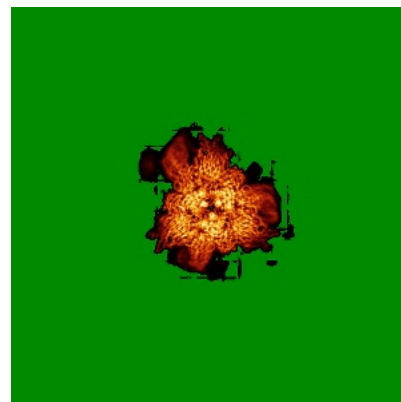
6.4.1 Primary map



X

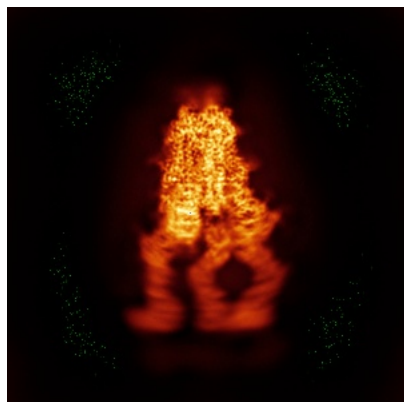


Y

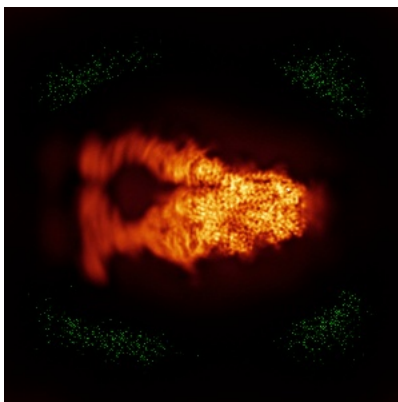


Z

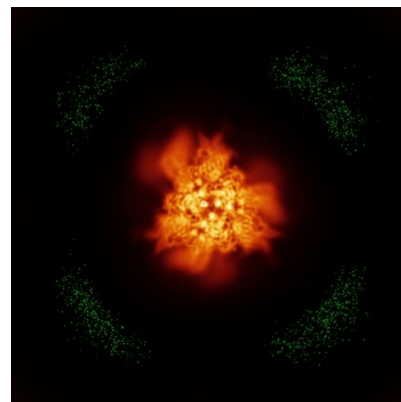
6.4.2 Raw map



X



Y

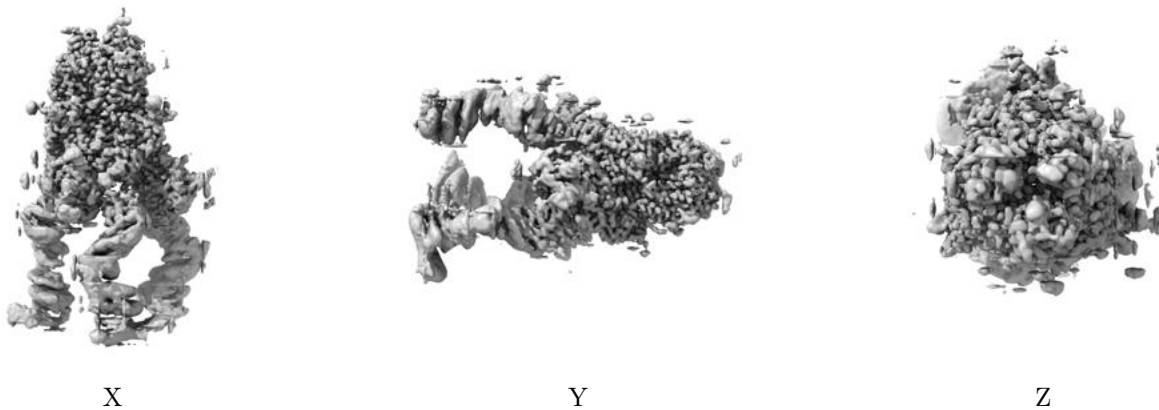


Z

The images above show the map standard deviation projections with false color in three orthogonal directions. Minimum values are shown in green, max in blue, and dark to light orange shades represent small to large values respectively.

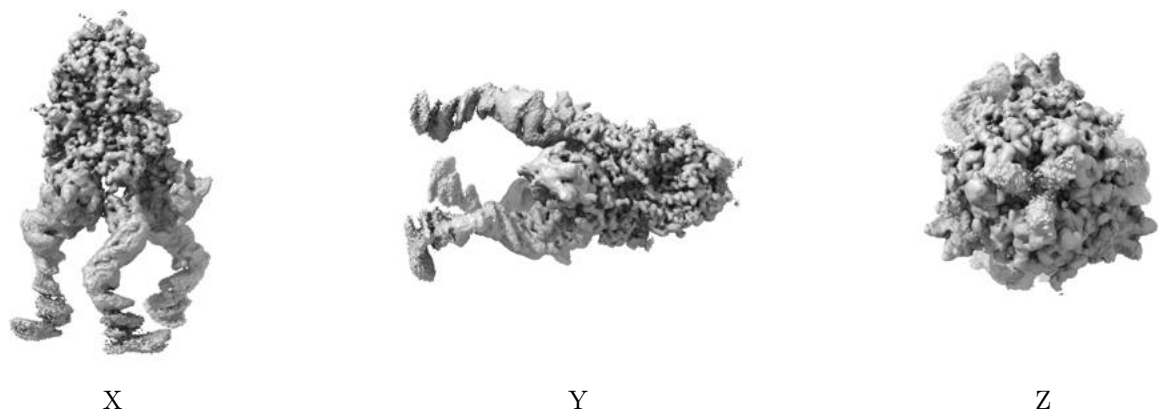
6.5 Orthogonal surface views [i](#)

6.5.1 Primary map



The images above show the 3D surface view of the map at the recommended contour level 0.006. These images, in conjunction with the slice images, may facilitate assessment of whether an appropriate contour level has been provided.

6.5.2 Raw map



These images show the 3D surface of the raw map. The raw map's contour level was selected so that its surface encloses the same volume as the primary map does at its recommended contour level.

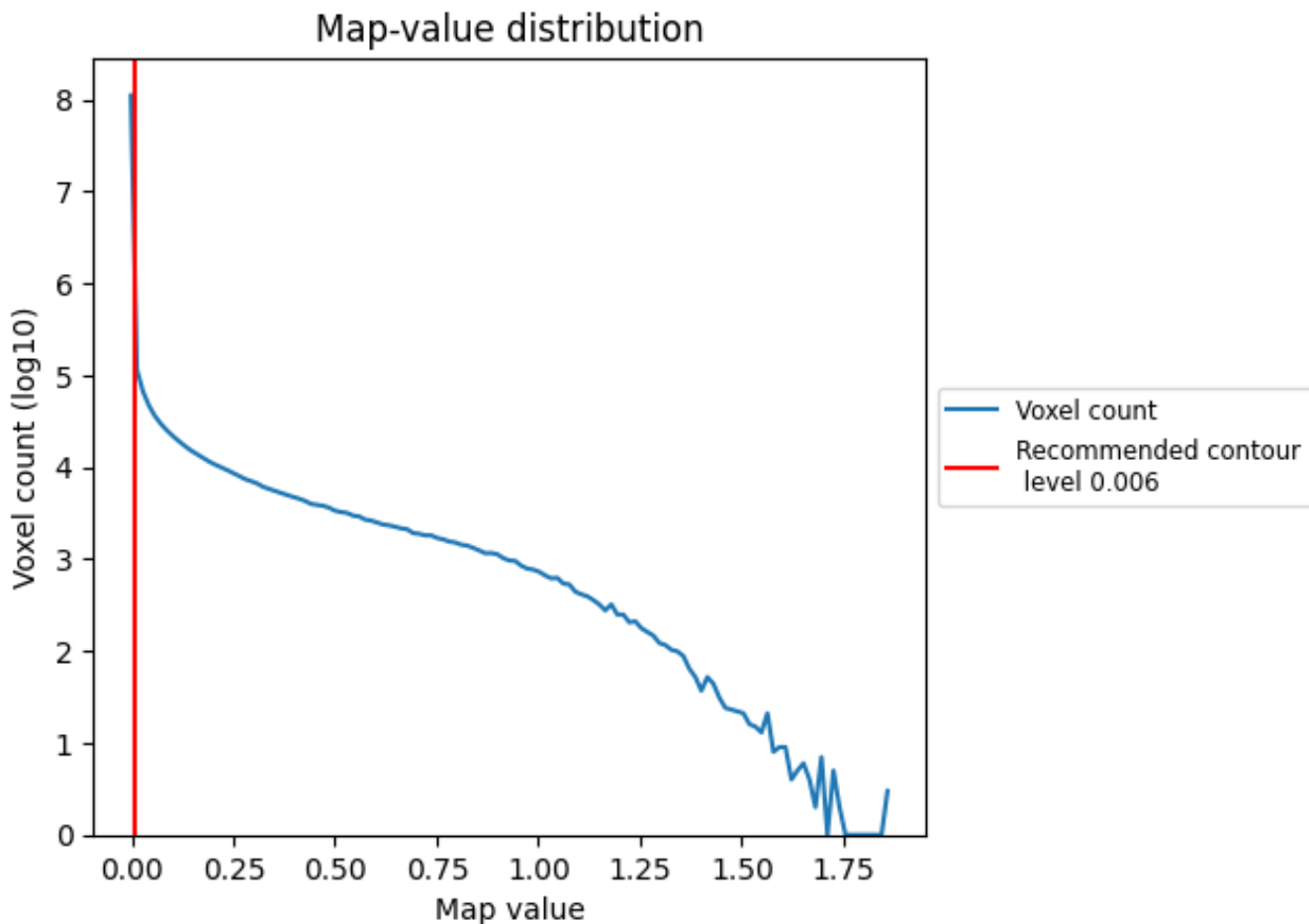
6.6 Mask visualisation [i](#)

This section was not generated. No masks/segmentation were deposited.

7 Map analysis [i](#)

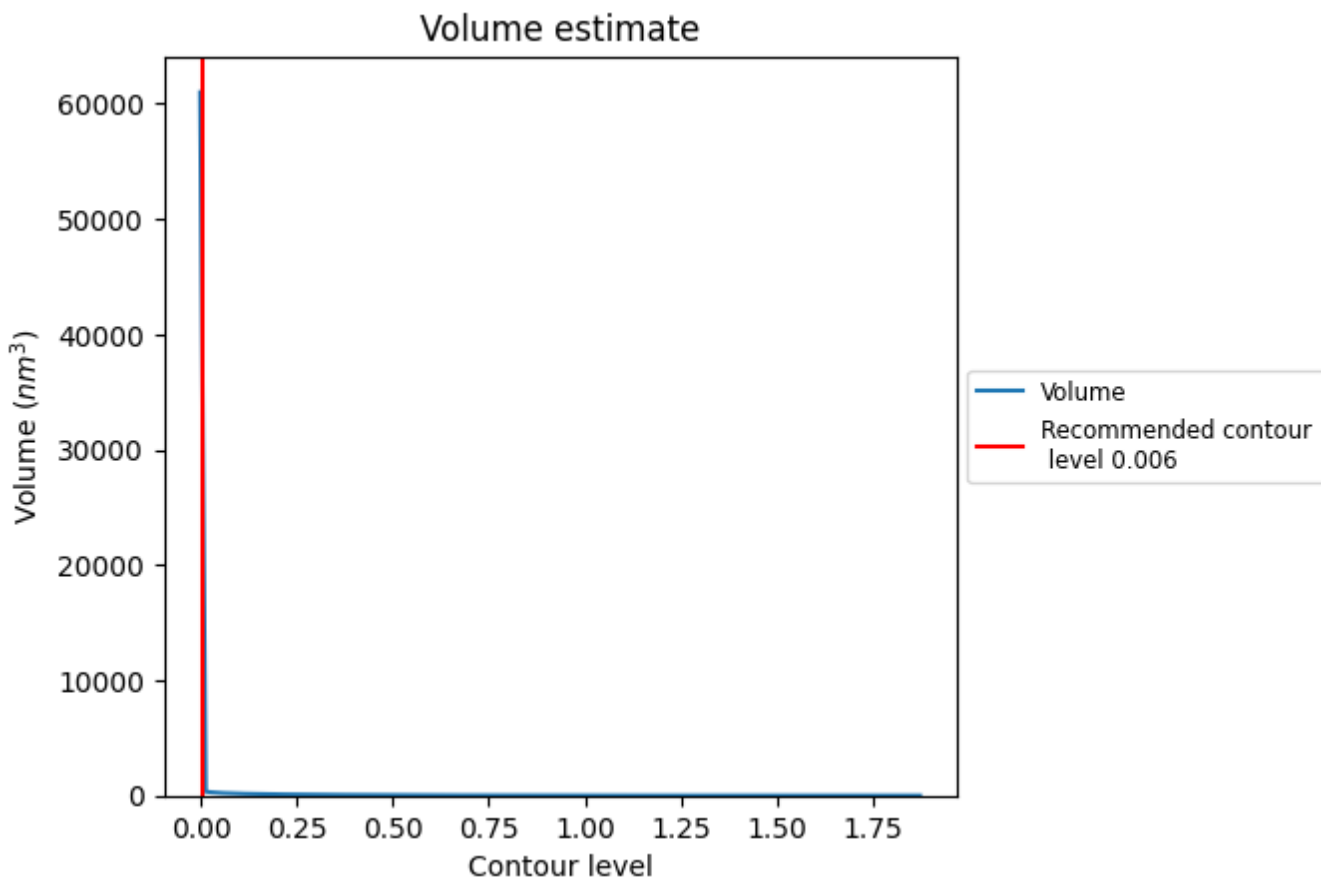
This section contains the results of statistical analysis of the map.

7.1 Map-value distribution [i](#)



The map-value distribution is plotted in 128 intervals along the x-axis. The y-axis is logarithmic. A spike in this graph at zero usually indicates that the volume has been masked.

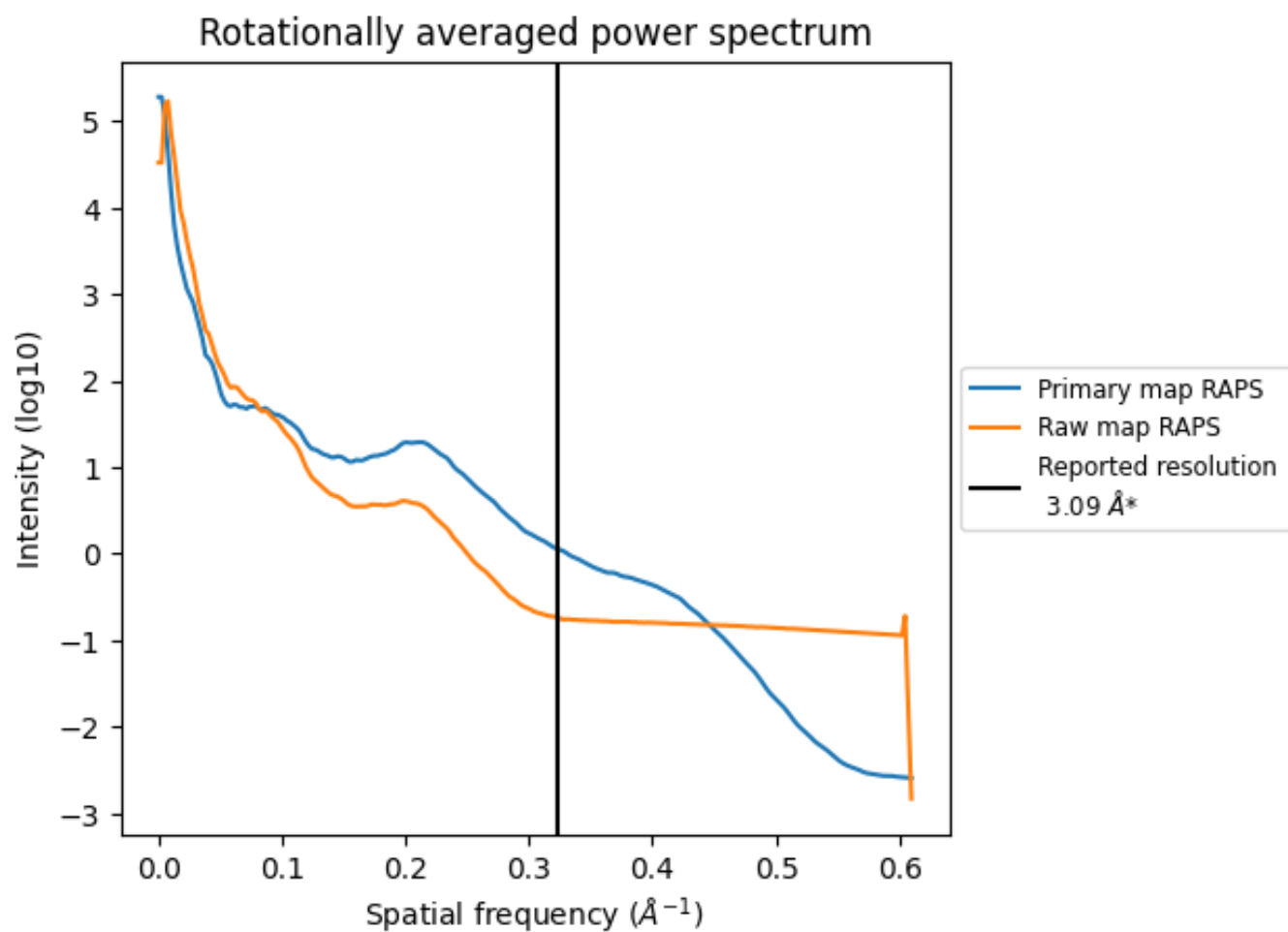
7.2 Volume estimate [i](#)



The volume at the recommended contour level is 29322 nm³; this corresponds to an approximate mass of 26487 kDa.

The volume estimate graph shows how the enclosed volume varies with the contour level. The recommended contour level is shown as a vertical line and the intersection between the line and the curve gives the volume of the enclosed surface at the given level.

7.3 Rotationally averaged power spectrum i

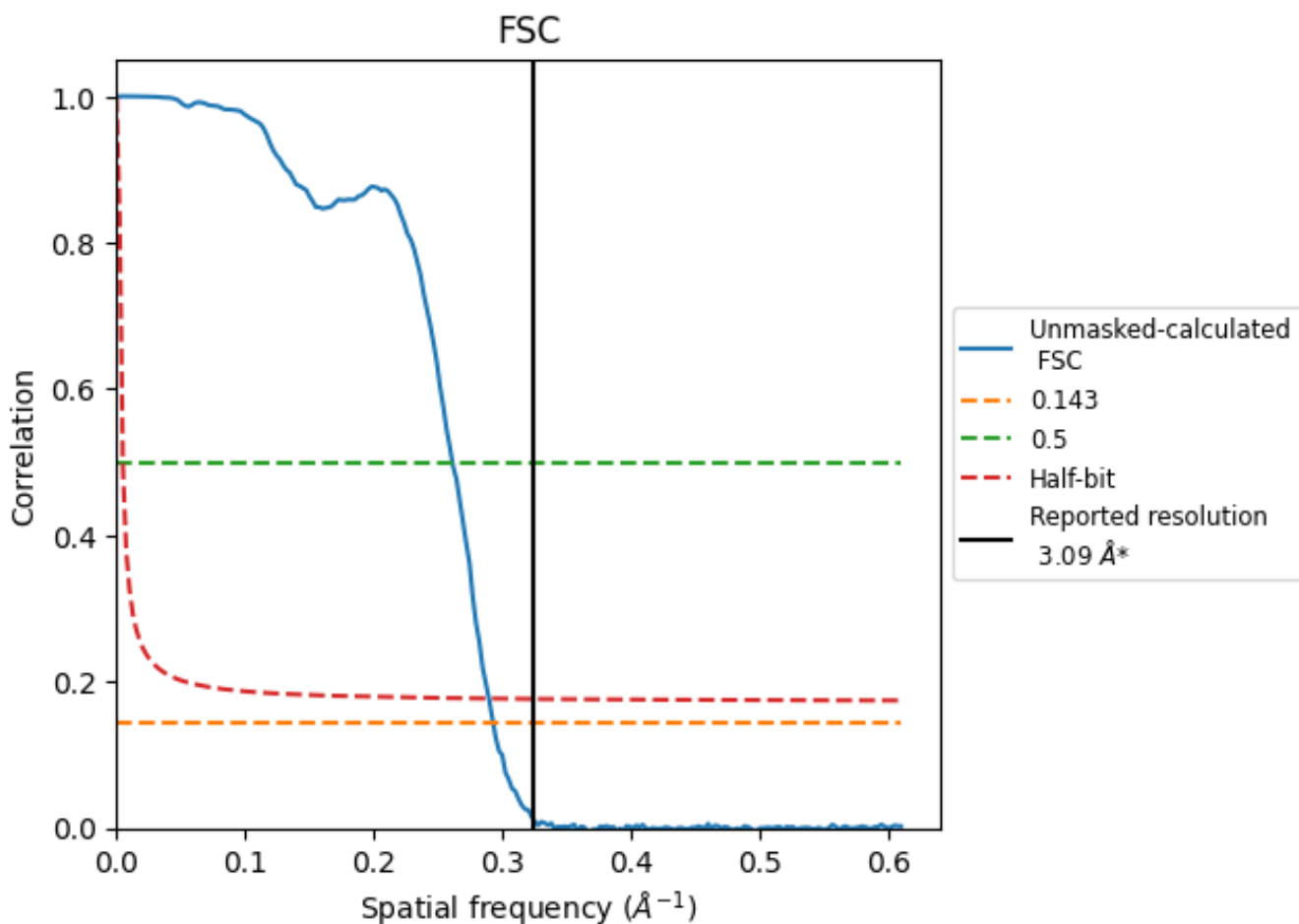


*Reported resolution corresponds to spatial frequency of 0.324 \AA^{-1}

8 Fourier-Shell correlation [i](#)

Fourier-Shell Correlation (FSC) is the most commonly used method to estimate the resolution of single-particle and subtomogram-averaged maps. The shape of the curve depends on the imposed symmetry, mask and whether or not the two 3D reconstructions used were processed from a common reference. The reported resolution is shown as a black line. A curve is displayed for the half-bit criterion in addition to lines showing the 0.143 gold standard cut-off and 0.5 cut-off.

8.1 FSC [i](#)



*Reported resolution corresponds to spatial frequency of 0.324 Å⁻¹

8.2 Resolution estimates [i](#)

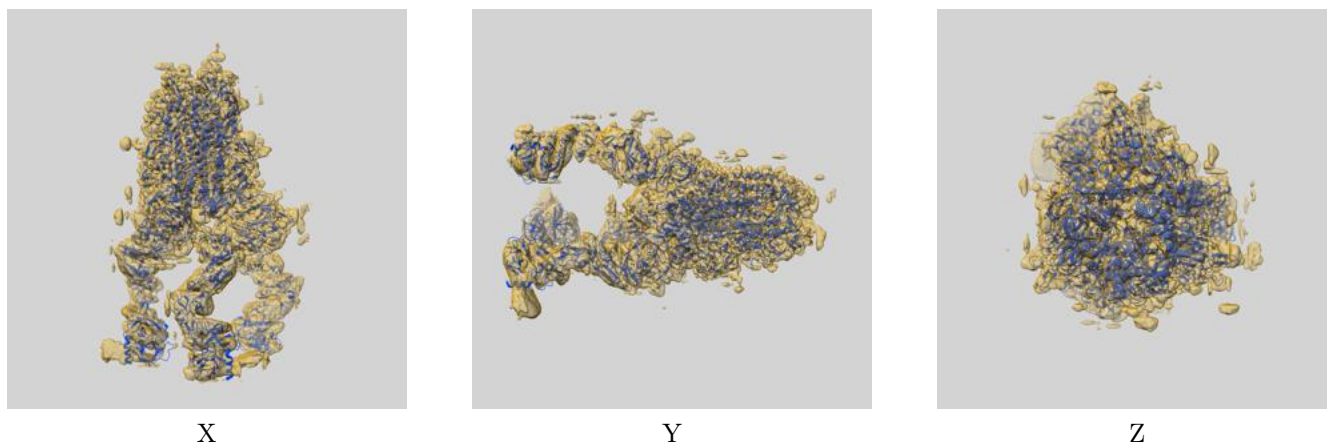
Resolution estimate (Å)	Estimation criterion (FSC cut-off)		
	0.143	0.5	Half-bit
Reported by author	3.09	-	-
Author-provided FSC curve	-	-	-
Unmasked-calculated*	3.42	3.83	3.45

*Resolution estimate based on FSC curve calculated by comparison of deposited half-maps. The value from deposited half-maps intersecting FSC 0.143 CUT-OFF 3.42 differs from the reported value 3.09 by more than 10 %

9 Map-model fit [i](#)

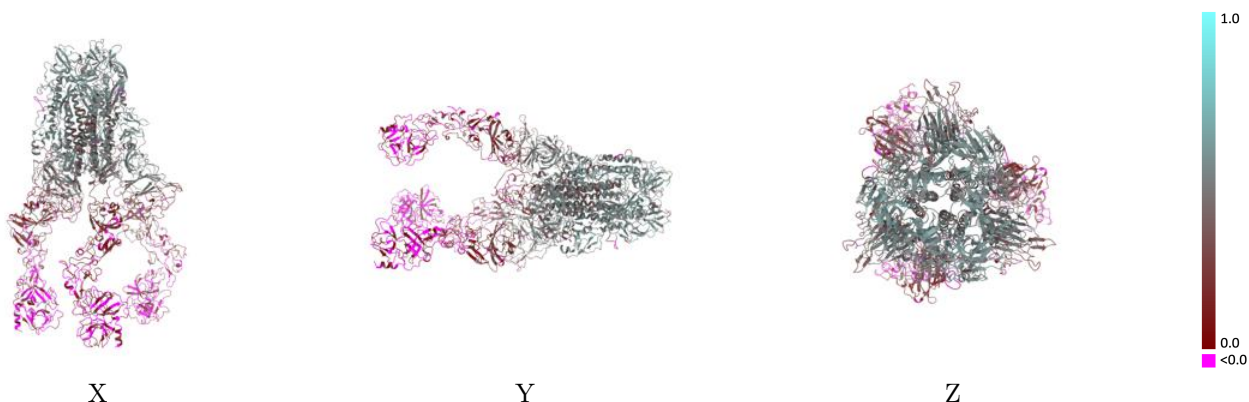
This section contains information regarding the fit between EMDB map EMD-39025 and PDB model 8Y7X. Per-residue inclusion information can be found in section 3 on page 8.

9.1 Map-model overlay [i](#)



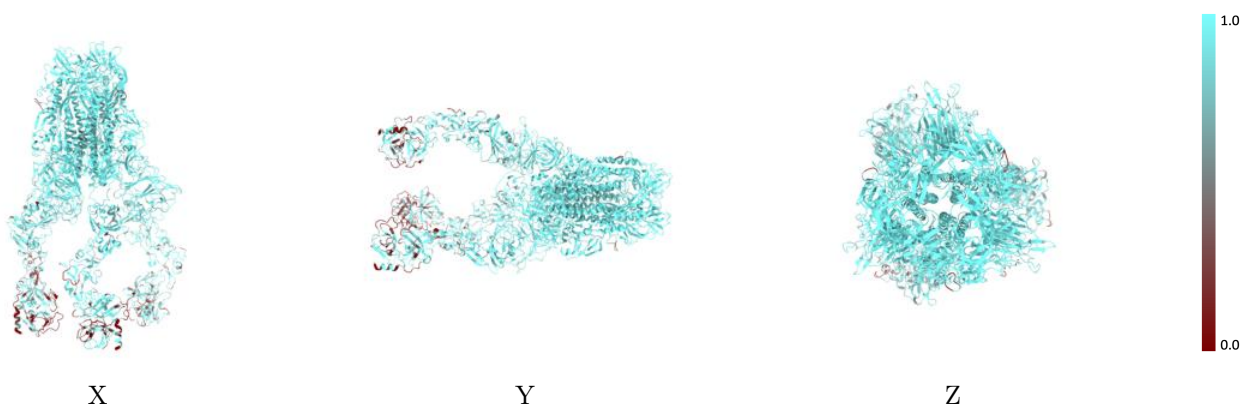
The images above show the 3D surface view of the map at the recommended contour level 0.006 at 50% transparency in yellow overlaid with a ribbon representation of the model coloured in blue. These images allow for the visual assessment of the quality of fit between the atomic model and the map.

9.2 Q-score mapped to coordinate model [i](#)



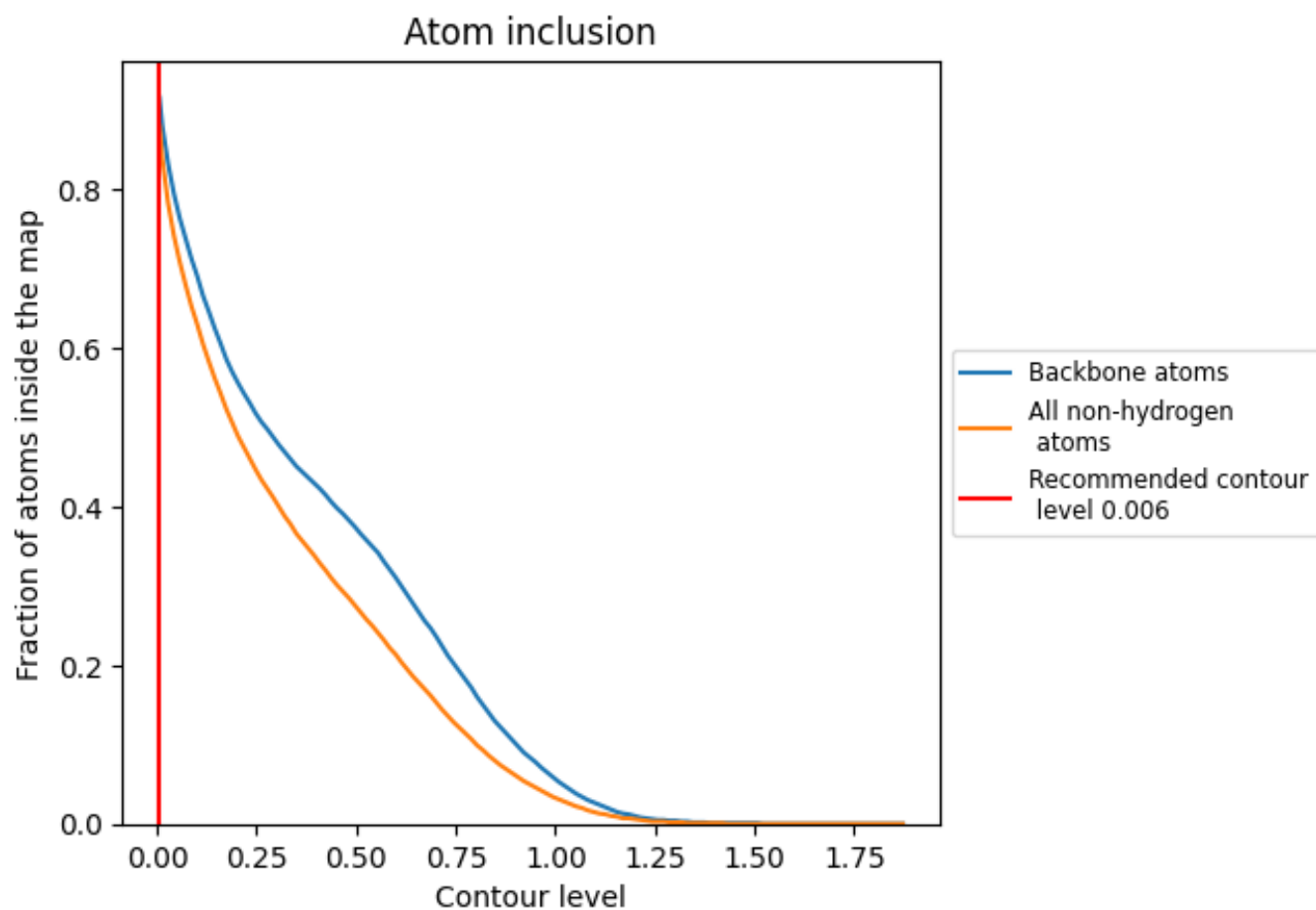
The images above show the model with each residue coloured according to its Q-score. This shows their resolvability in the map with higher Q-score values reflecting better resolvability. Please note: Q-score is calculating the resolvability of atoms, and thus high values are only expected at resolutions at which atoms can be resolved. Low Q-score values may therefore be expected for many entries.

9.3 Atom inclusion mapped to coordinate model [i](#)



The images above show the model with each residue coloured according to its atom inclusion. This shows to what extent they are inside the map at the recommended contour level (0.006).



































9.4 Atom inclusion [i](#)



At the recommended contour level, 92% of all backbone atoms, 88% of all non-hydrogen atoms, are inside the map.

9.5 Map-model fit summary

The table lists the average atom inclusion at the recommended contour level (0.006) and Q-score for the entire model and for each chain.

Chain	Atom inclusion	Q-score
All	 0.8800	 0.3310
A	 0.9280	 0.3830
B	 0.9100	 0.3750
C	 0.9370	 0.3940
D	 0.7860	 0.2650
E	 0.9290	 0.3970
F	 0.7860	 0.2770
G	 0.8930	 0.3460
H	 0.9290	 0.3490
I	 0.8570	 0.3580
J	 0.9290	 0.3620
K	 0.8930	 0.3850
L	 0.7140	 0.2430
M	 0.7860	 0.2620
x	 0.6410	 0.0240
y	 0.6730	 0.0290
z	 0.5400	 -0.0060

