



## Full wwPDB EM Validation Report ⓘ

Jun 29, 2026 – 06:29 PM EDT

PDB ID : 9Y3V / pdb\_00009y3v  
EMDB ID : EMD-72468  
Title : Eukaryotic translation initiation factor 2-B (eIF2B) bound to the viral effector AcP10  
Authors : Dalwadi, U.; Croll, T.; Subramanian, A.; Lee, D.J.; Arthur, C.; Walter, P.; Frost, A.  
Deposited on : 2025-09-02  
Resolution : 2.90 Å (reported)  
Based on initial models : 7L7G, .

This is a Full wwPDB EM Validation Report for a publicly released PDB entry.

We welcome your comments at [validation@mail.wwpdb.org](mailto:validation@mail.wwpdb.org)

A user guide is available at

<https://www.wwpdb.org/validation/2017/EMValidationReportHelp>

with specific help available everywhere you see the ⓘ symbol.

The types of validation reports are described at

<http://www.wwpdb.org/validation/2017/FAQs#types>.

---

The following versions of software and data (see [references ⓘ](#)) were used in the production of this report:

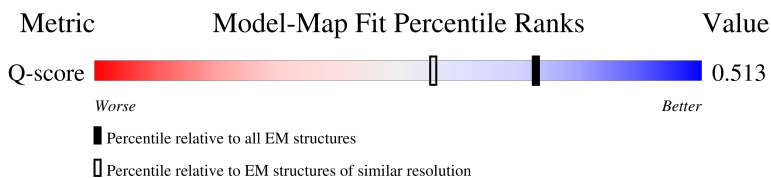
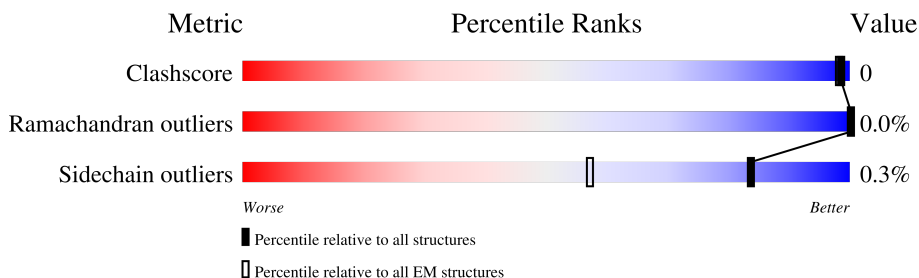
EMDB validation analysis : 0.0.1.dev133  
MolProbity : 4-5-2 with Phenix2.0  
Percentile statistics : 20250101.v01 (using entries in the PDB archive January 1st 2025)  
EM percentile statistics : 202505.v01 (Using data in the EMDB archive up until May 2025)  
MapQ : 1.9.13  
Ideal geometry (proteins) : Engh & Huber (2001)  
Ideal geometry (DNA, RNA) : Parkinson et al. (1996)  
Validation Pipeline (wwPDB-VP) : 2.50

# 1 Overall quality at a glance

The following experimental techniques were used to determine the structure:  
*ELECTRON MICROSCOPY*

The reported resolution of this entry is 2.90 Å.

Percentile scores (ranging between 0-100) for global validation metrics of the entry are shown in the following graphic. The table shows the number of entries on which the scores are based.





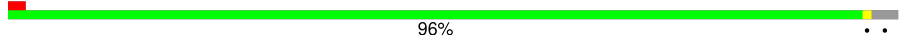
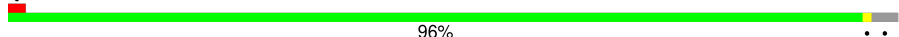

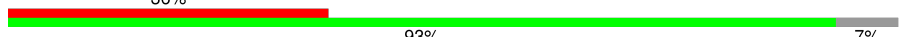


Metric	Whole archive (#Entries)	EM structures (#Entries)	Similar EM resolution (#Entries, resolution range(Å))
Clashscore	229148	23984	-
Ramachandran outliers	224038	23583	-
Sidechain outliers	223484	23102	-
Q-score	-	25397	13054 ( 2.40 - 3.40 )

The table below summarises the geometric issues observed across the polymeric chains and their fit to the map. The red, orange, yellow and green segments of the bar indicate the fraction of residues that contain outliers for  $\geq 3$ , 2, 1 and 0 types of geometric quality criteria respectively. A grey segment represents the fraction of residues that are not modelled. The numeric value for each fraction is indicated below the corresponding segment, with a dot representing fractions  $\leq 5\%$ . The upper red bar (where present) indicates the fraction of residues that have poor fit to the EM map (all-atom inclusion  $< 40\%$ ). The numeric value is given above the bar.

Mol	Chain	Length	Quality of chain
1	A	721	60% 39%
1	B	721	60% 39%
2	C	368	91% 7%
2	D	368	90% 7%

Continued on next page...

*Continued from previous page...*

Mol	Chain	Length	Quality of chain
3	E	523	 67% 32%
3	F	523	 68% 32%
4	G	305	 96% ..
4	H	305	 96% ..
5	I	452	 38% 93% 7%
5	J	452	 36% 93% 7%
6	K	210	 38% 100%
6	L	210	 26% 100%

## 2 Entry composition [i](#)

There are 10 unique types of molecules in this entry. The entry contains 32243 atoms, of which 0 are hydrogens and 0 are deuteriums.

In the tables below, the AltConf column contains the number of residues with at least one atom in alternate conformation and the Trace column contains the number of residues modelled with at most 2 atoms.

- Molecule 1 is a protein called Translation initiation factor eIF-2B subunit epsilon.

Mol	Chain	Residues	Atoms					AltConf	Trace
			Total	C	N	O	S		
1	A	437	Total	C	N	O	S	0	0
			3423	2167	606	635	15		
1	B	437	Total	C	N	O	S	0	0
			3423	2167	606	635	15		

- Molecule 2 is a protein called Translation initiation factor eIF-2B subunit beta.

Mol	Chain	Residues	Atoms					AltConf	Trace
			Total	C	N	O	S		
2	C	344	Total	C	N	O	S	0	0
			2693	1695	473	510	15		
2	D	344	Total	C	N	O	S	0	0
			2693	1695	473	510	15		

There are 36 discrepancies between the modelled and reference sequences:

Chain	Residue	Modelled	Actual	Comment	Reference
C	-16	MET	-	initiating methionine	UNP P49770
C	-15	HIS	-	expression tag	UNP P49770
C	-14	HIS	-	expression tag	UNP P49770
C	-13	HIS	-	expression tag	UNP P49770
C	-12	HIS	-	expression tag	UNP P49770
C	-11	HIS	-	expression tag	UNP P49770
C	-10	HIS	-	expression tag	UNP P49770
C	-9	GLY	-	expression tag	UNP P49770
C	-8	GLY	-	expression tag	UNP P49770
C	-7	GLY	-	expression tag	UNP P49770
C	-6	SER	-	expression tag	UNP P49770
C	-5	GLU	-	expression tag	UNP P49770
C	-4	ASN	-	expression tag	UNP P49770
C	-3	LEU	-	expression tag	UNP P49770
C	-2	TYR	-	expression tag	UNP P49770
C	-1	PHE	-	expression tag	UNP P49770
C	0	GLN	-	expression tag	UNP P49770

*Continued on next page...*

*Continued from previous page...*

Chain	Residue	Modelled	Actual	Comment	Reference
C	1	SER	-	expression tag	UNP P49770
D	-16	MET	-	initiating methionine	UNP P49770
D	-15	HIS	-	expression tag	UNP P49770
D	-14	HIS	-	expression tag	UNP P49770
D	-13	HIS	-	expression tag	UNP P49770
D	-12	HIS	-	expression tag	UNP P49770
D	-11	HIS	-	expression tag	UNP P49770
D	-10	HIS	-	expression tag	UNP P49770
D	-9	GLY	-	expression tag	UNP P49770
D	-8	GLY	-	expression tag	UNP P49770
D	-7	GLY	-	expression tag	UNP P49770
D	-6	SER	-	expression tag	UNP P49770
D	-5	GLU	-	expression tag	UNP P49770
D	-4	ASN	-	expression tag	UNP P49770
D	-3	LEU	-	expression tag	UNP P49770
D	-2	TYR	-	expression tag	UNP P49770
D	-1	PHE	-	expression tag	UNP P49770
D	0	GLN	-	expression tag	UNP P49770
D	1	SER	-	expression tag	UNP P49770

- Molecule 3 is a protein called Translation initiation factor eIF-2B subunit delta.

Mol	Chain	Residues	Atoms					AltConf	Trace
			Total	C	N	O	S		
3	E	356	2770	1751	493	512	14	0	0
3	F	356	2770	1751	493	512	14	0	0

- Molecule 4 is a protein called Translation initiation factor eIF2B subunit alpha.

Mol	Chain	Residues	Atoms					AltConf	Trace
			Total	C	N	O	S		
4	G	296	2302	1477	381	432	12	0	0
4	H	296	2302	1477	381	432	12	0	0

- Molecule 5 is a protein called Translation initiation factor eIF-2B subunit gamma.

Mol	Chain	Residues	Atoms					AltConf	Trace
			Total	C	N	O	S		
5	I	420	3260	2062	560	612	26	0	0

*Continued on next page...*

Continued from previous page...

Mol	Chain	Residues	Atoms					AltConf	Trace
5	J	420	Total	C	N	O	S	0	0
			3260	2062	560	612	26		

- Molecule 6 is a protein called Uridine kinase P10.

Mol	Chain	Residues	Atoms					AltConf	Trace
6	K	210	Total	C	N	O	S	0	0
			1668	1076	287	295	10		
6	L	210	Total	C	N	O	S	0	0
			1668	1076	287	295	10		

- Molecule 7 is CHLORIDE ION (CCD ID: CL) (formula: Cl).

Mol	Chain	Residues	Atoms		AltConf
7	A	1	Total	Cl	0
			1	1	
7	B	1	Total	Cl	0
			1	1	
7	C	1	Total	Cl	0
			1	1	
7	D	1	Total	Cl	0
			1	1	
7	E	2	Total	Cl	0
			2	2	
7	F	2	Total	Cl	0
			2	2	

- Molecule 8 is MAGNESIUM ION (CCD ID: MG) (formula: Mg).

Mol	Chain	Residues	Atoms		AltConf
8	E	1	Total	Mg	0
			1	1	

- Molecule 9 is ZINC ION (CCD ID: ZN) (formula: Zn).

Mol	Chain	Residues	Atoms		AltConf
9	F	1	Total	Zn	0
			1	1	

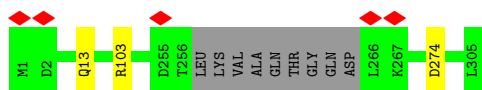
- Molecule 10 is water.

Mol	Chain	Residues	Atoms		AltConf
10	E	1	Total	O	0
			1	1	

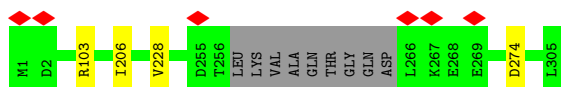




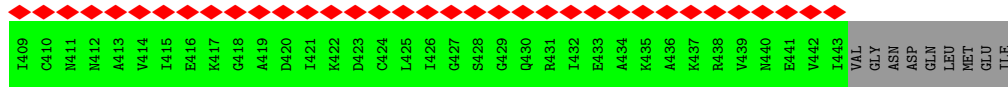
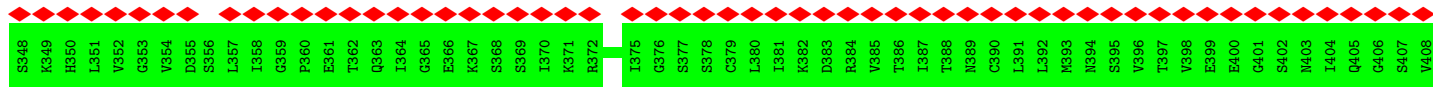
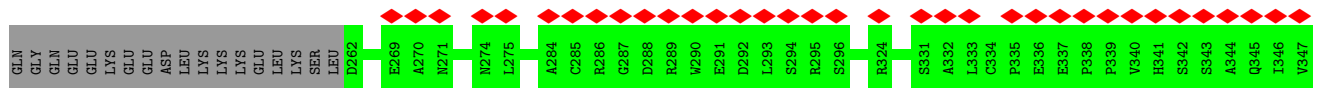
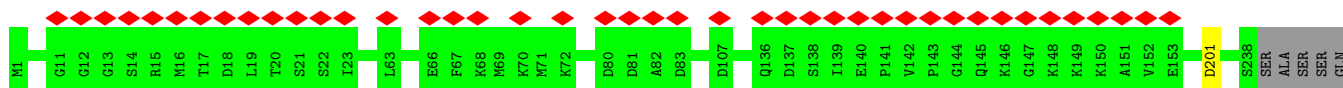
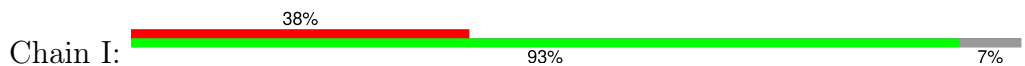
• Molecule 4: Translation initiation factor eIF2B subunit alpha



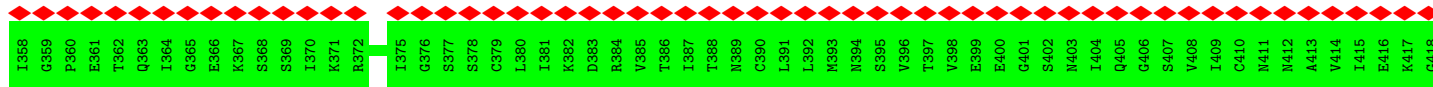
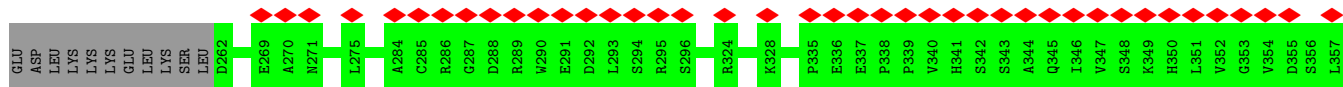
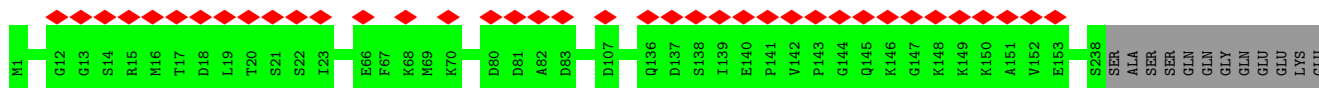
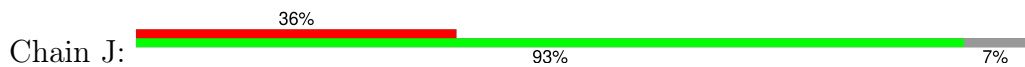
• Molecule 4: Translation initiation factor eIF2B subunit alpha



• Molecule 5: Translation initiation factor eIF-2B subunit gamma

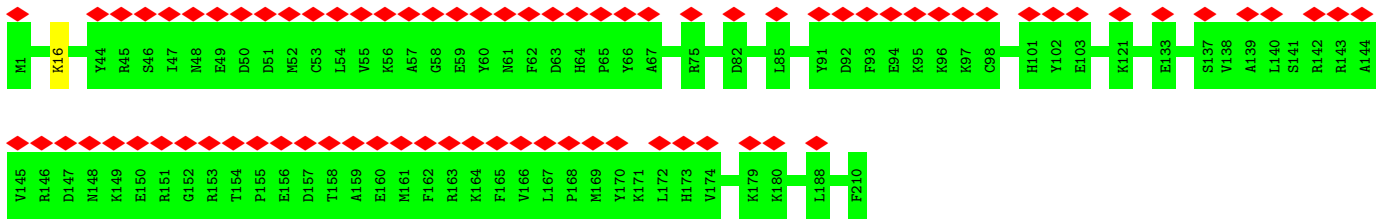


• Molecule 5: Translation initiation factor eIF-2B subunit gamma

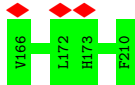
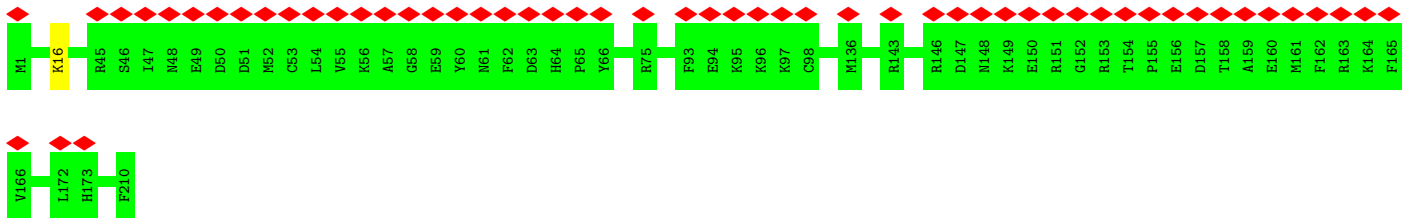




• Molecule 6: Uridine kinase P10



• Molecule 6: Uridine kinase P10



## 4 Experimental information

Property	Value	Source
EM reconstruction method	SINGLE PARTICLE	Depositor
Imposed symmetry	POINT, Not provided	
Number of particles used	220193	Depositor
Resolution determination method	FSC 0.143 CUT-OFF	Depositor
CTF correction method	PHASE FLIPPING AND AMPLITUDE CORRECTION	Depositor
Microscope	TFS GLACIOS	Depositor
Voltage (kV)	200	Depositor
Electron dose ( $e^-/\text{\AA}^2$ )	50	Depositor
Minimum defocus (nm)	600	Depositor
Maximum defocus (nm)	1600	Depositor
Magnification	130000	Depositor
Image detector	TFS FALCON 4i (4k x 4k)	Depositor
Maximum map value	0.132	Depositor
Minimum map value	-0.044	Depositor
Average map value	0.001	Depositor
Map value standard deviation	0.004	Depositor
Recommended contour level	0.03	Depositor
Map size (Å)	357.44, 357.44, 357.44	wwPDB
Map dimensions	400, 400, 400	wwPDB
Map angles (°)	90.0, 90.0, 90.0	wwPDB
Pixel spacing (Å)	0.8936, 0.8936, 0.8936	Depositor

## 5 Model quality i

### 5.1 Standard geometry i

Bond lengths and bond angles in the following residue types are not validated in this section: CL, ZN, MG

The Z score for a bond length (or angle) is the number of standard deviations the observed value is removed from the expected value. A bond length (or angle) with  $|Z| > 5$  is considered an outlier worth inspection. RMSZ is the root-mean-square of all Z scores of the bond lengths (or angles).

Mol	Chain	Bond lengths		Bond angles	
		RMSZ	# Z  >5	RMSZ	# Z  >5
1	A	0.56	0/3497	0.92	0/4758
1	B	0.55	0/3497	0.90	1/4758 (0.0%)
2	C	0.55	0/2744	0.94	2/3709 (0.1%)
2	D	0.61	0/2744	1.03	1/3709 (0.0%)
3	E	0.54	0/2822	0.90	0/3835
3	F	0.55	0/2822	0.91	0/3835
4	G	0.52	0/2338	0.93	1/3155 (0.0%)
4	H	0.53	0/2338	0.94	1/3155 (0.0%)
5	I	0.56	0/3310	0.90	1/4470 (0.0%)
5	J	0.56	0/3310	0.90	0/4470
6	K	0.58	0/1709	0.93	0/2312
6	L	0.56	0/1709	0.93	0/2312
All	All	0.56	0/32840	0.93	7/44478 (0.0%)

Chiral center outliers are detected by calculating the chiral volume of a chiral center and verifying if the center is modelled as a planar moiety or with the opposite hand. A planarity outlier is detected by checking planarity of atoms in a peptide group, atoms in a mainchain group or atoms of a sidechain that are expected to be planar.

Mol	Chain	#Chirality outliers	#Planarity outliers
2	C	0	2
2	D	0	3
All	All	0	5

There are no bond length outliers.

All (7) bond angle outliers are listed below:

Mol	Chain	Res	Type	Atoms	Z	Observed(°)	Ideal(°)
2	D	314	ASP	CA-CB-CG	7.20	119.80	112.60
2	C	314	ASP	CA-CB-CG	6.34	118.94	112.60

*Continued on next page...*

*Continued from previous page...*

Mol	Chain	Res	Type	Atoms	Z	Observed(°)	Ideal(°)
4	H	274	ASP	CA-CB-CG	5.56	118.16	112.60
2	C	317	PRO	N-CA-C	5.55	115.80	110.47
4	G	274	ASP	CA-CB-CG	5.31	117.91	112.60
1	B	53	ASP	CA-CB-CG	5.25	117.85	112.60
5	I	201	ASP	CA-CB-CG	5.05	117.65	112.60

There are no chirality outliers.

All (5) planarity outliers are listed below:

Mol	Chain	Res	Type	Group
2	C	245	LEU	Peptide
2	C	280	ASN	Peptide
2	D	14	ARG	Sidechain
2	D	245	LEU	Peptide
2	D	280	ASN	Peptide

## 5.2 Too-close contacts [i](#)

In the following table, the Non-H and H(model) columns list the number of non-hydrogen atoms and hydrogen atoms in the chain respectively. The H(added) column lists the number of hydrogen atoms added and optimized by MolProbity. The Clashes column lists the number of clashes within the asymmetric unit, whereas Symm-Clashes lists symmetry-related clashes.

Mol	Chain	Non-H	H(model)	H(added)	Clashes	Symm-Clashes
1	A	3423	0	3419	1	0
1	B	3423	0	3419	1	0
2	C	2693	0	2686	3	0
2	D	2693	0	2686	4	0
3	E	2770	0	2829	2	0
3	F	2770	0	2829	1	0
4	G	2302	0	2378	1	0
4	H	2302	0	2378	2	0
5	I	3260	0	3357	0	0
5	J	3260	0	3357	0	0
6	K	1668	0	1685	0	0
6	L	1668	0	1685	0	0
7	A	1	0	0	0	0
7	B	1	0	0	0	0
7	C	1	0	0	0	0
7	D	1	0	0	0	0
7	E	2	0	0	0	0

*Continued on next page...*

Continued from previous page...

Mol	Chain	Non-H	H(model)	H(added)	Clashes	Symm-Clashes
7	F	2	0	0	0	0
8	E	1	0	0	0	0
9	F	1	0	0	0	0
10	E	1	0	0	1	0
All	All	32243	0	32708	11	0

The all-atom clashscore is defined as the number of clashes found per 1000 atoms (including hydrogen atoms). The all-atom clashscore for this structure is 0.

All (11) close contacts within the same asymmetric unit are listed below, sorted by their clash magnitude.

Atom-1	Atom-2	Interatomic distance (Å)	Clash overlap (Å)
3:E:363:SER:O	10:E:701:HOH:O	1.87	0.93
2:C:112:LEU:HD13	4:G:103:ARG:HD3	1.88	0.56
1:B:186:LYS:HE3	2:C:297:PHE:CD2	2.44	0.53
2:D:166:MET:HE3	2:D:229:VAL:HG21	1.91	0.52
2:D:112:LEU:HD13	4:H:103:ARG:HD3	1.92	0.50
1:A:186:LYS:HE3	2:D:297:PHE:CD2	2.47	0.49
2:C:166:MET:HE3	2:C:229:VAL:HG21	1.94	0.48
4:H:206:ILE:HG21	4:H:228:VAL:HG11	1.99	0.43
3:F:499:LEU:HD11	3:F:506:MET:HB3	2.01	0.42
2:D:241:ALA:HA	2:D:340:MET:HE3	2.02	0.42
3:E:499:LEU:HD11	3:E:506:MET:HB3	2.03	0.41

There are no symmetry-related clashes.

## 5.3 Torsion angles [i](#)

### 5.3.1 Protein backbone [i](#)

In the following table, the Percentiles column shows the percent Ramachandran outliers of the chain as a percentile score with respect to all PDB entries followed by that with respect to all EM entries.

The Analysed column shows the number of residues for which the backbone conformation was analysed, and the total number of residues.

Mol	Chain	Analysed	Favoured	Allowed	Outliers	Percentiles	
1	A	433/721 (60%)	416 (96%)	17 (4%)	0	100	100
1	B	433/721 (60%)	417 (96%)	16 (4%)	0	100	100

Continued on next page...

Continued from previous page...

Mol	Chain	Analysed	Favoured	Allowed	Outliers	Percentiles	
2	C	342/368 (93%)	336 (98%)	5 (2%)	1 (0%)	36	65
2	D	342/368 (93%)	337 (98%)	5 (2%)	0	100	100
3	E	354/523 (68%)	350 (99%)	4 (1%)	0	100	100
3	F	354/523 (68%)	350 (99%)	4 (1%)	0	100	100
4	G	292/305 (96%)	288 (99%)	4 (1%)	0	100	100
4	H	292/305 (96%)	289 (99%)	3 (1%)	0	100	100
5	I	416/452 (92%)	395 (95%)	21 (5%)	0	100	100
5	J	416/452 (92%)	400 (96%)	16 (4%)	0	100	100
6	K	208/210 (99%)	205 (99%)	3 (1%)	0	100	100
6	L	208/210 (99%)	205 (99%)	3 (1%)	0	100	100
All	All	4090/5158 (79%)	3988 (98%)	101 (2%)	1 (0%)	100	100

All (1) Ramachandran outliers are listed below:

Mol	Chain	Res	Type
2	C	281	GLU

### 5.3.2 Protein sidechains [i](#)

In the following table, the Percentiles column shows the percent sidechain outliers of the chain as a percentile score with respect to all PDB entries followed by that with respect to all EM entries.

The Analysed column shows the number of residues for which the sidechain conformation was analysed, and the total number of residues.

Mol	Chain	Analysed	Rotameric	Outliers	Percentiles	
1	A	384/626 (61%)	381 (99%)	3 (1%)	73	90
1	B	384/626 (61%)	381 (99%)	3 (1%)	73	90
2	C	294/312 (94%)	293 (100%)	1 (0%)	86	96
2	D	294/312 (94%)	293 (100%)	1 (0%)	86	96
3	E	312/444 (70%)	311 (100%)	1 (0%)	86	96
3	F	312/444 (70%)	312 (100%)	0	100	100
4	G	253/260 (97%)	252 (100%)	1 (0%)	84	94
4	H	253/260 (97%)	253 (100%)	0	100	100

Continued on next page...

*Continued from previous page...*

Mol	Chain	Analysed	Rotameric	Outliers	Percentiles	
5	I	369/398 (93%)	369 (100%)	0	100	100
5	J	369/398 (93%)	369 (100%)	0	100	100
6	K	180/180 (100%)	179 (99%)	1 (1%)	78	93
6	L	180/180 (100%)	179 (99%)	1 (1%)	78	93
All	All	3584/4440 (81%)	3572 (100%)	12 (0%)	84	96

All (12) residues with a non-rotameric sidechain are listed below:

Mol	Chain	Res	Type
1	A	104	GLU
1	A	213	LEU
1	A	422	ARG
1	B	104	GLU
1	B	213	LEU
1	B	422	ARG
2	C	301	ASP
2	D	119	ASN
3	E	245	ASN
4	G	13	GLN
6	K	16	LYS
6	L	16	LYS

Sometimes sidechains can be flipped to improve hydrogen bonding and reduce clashes. All (30) such sidechains are listed below:

Mol	Chain	Res	Type
1	A	177	ASN
1	A	341	ASN
1	A	388	ASN
1	B	177	ASN
1	B	341	ASN
1	B	388	ASN
1	B	409	HIS
1	B	410	GLN
2	D	154	GLN
3	E	185	GLN
3	E	406	HIS
3	F	185	GLN
3	F	325	GLN
3	F	406	HIS
4	G	170	HIS

*Continued on next page...*

*Continued from previous page...*

Mol	Chain	Res	Type
4	G	208	ASN
4	G	222	GLN
4	G	244	GLN
4	H	208	ASN
4	H	222	GLN
4	H	244	GLN
5	I	196	HIS
5	I	283	ASN
5	I	345	GLN
5	I	363	GLN
5	J	196	HIS
5	J	297	GLN
5	J	363	GLN
5	J	440	ASN
6	K	106	ASN

### 5.3.3 RNA [i](#)

There are no RNA molecules in this entry.

### 5.4 Non-standard residues in protein, DNA, RNA chains [i](#)

There are no non-standard protein/DNA/RNA residues in this entry.

### 5.5 Carbohydrates [i](#)

There are no oligosaccharides in this entry.

### 5.6 Ligand geometry [i](#)

Of 10 ligands modelled in this entry, 10 are monoatomic - leaving 0 for Mogul analysis.

There are no bond length outliers.

There are no bond angle outliers.

There are no chirality outliers.

There are no torsion outliers.

There are no ring outliers.

No monomer is involved in short contacts.

## 5.7 Other polymers

There are no such residues in this entry.

## 5.8 Polymer linkage issues

There are no chain breaks in this entry.

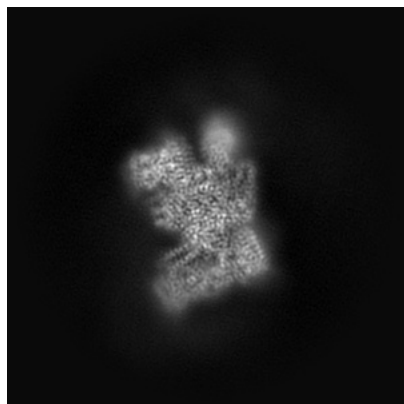
## 6 Map visualisation [i](#)

This section contains visualisations of the EMDB entry EMD-72468. These allow visual inspection of the internal detail of the map and identification of artifacts.

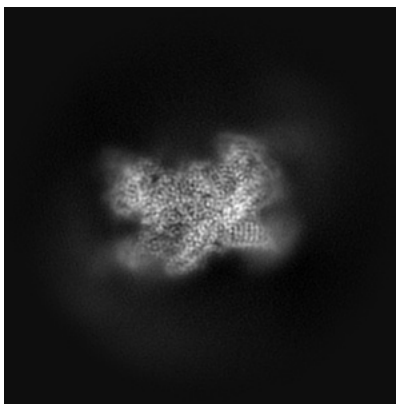
Images derived from a raw map, generated by summing the deposited half-maps, are presented below the corresponding image components of the primary map to allow further visual inspection and comparison with those of the primary map.

### 6.1 Orthogonal projections [i](#)

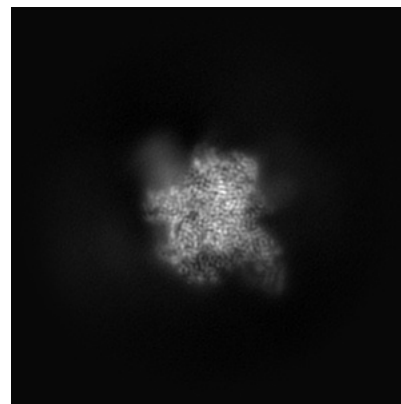
#### 6.1.1 Primary map



X

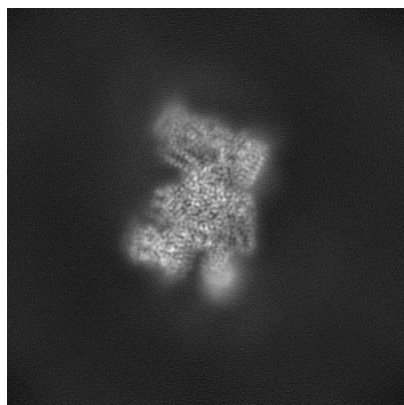


Y

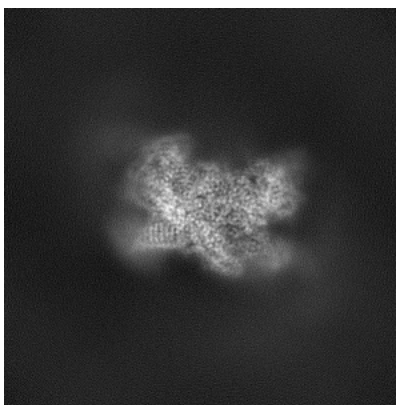


Z

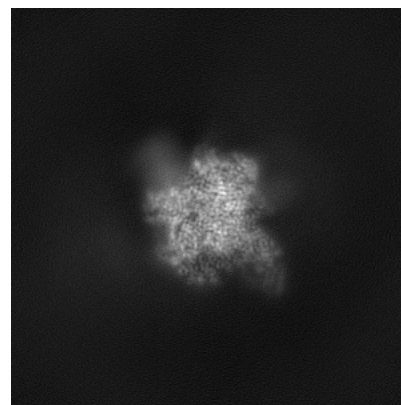
#### 6.1.2 Raw map



X



Y

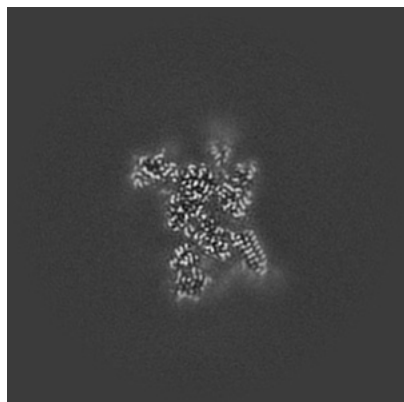


Z

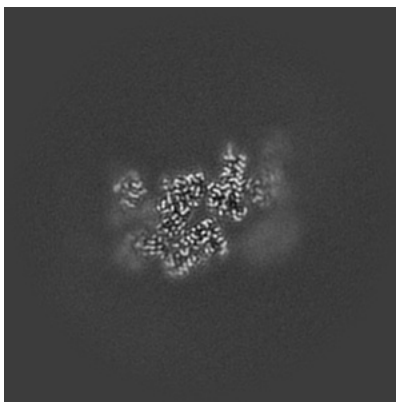
The images above show the map projected in three orthogonal directions.

## 6.2 Central slices [i](#)

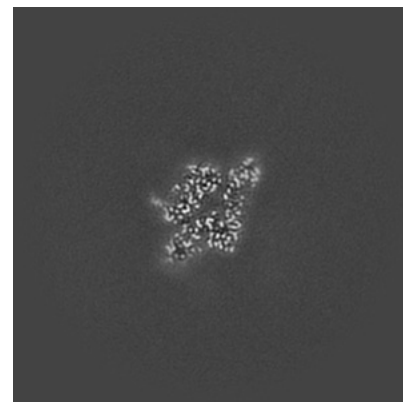
### 6.2.1 Primary map



X Index: 200

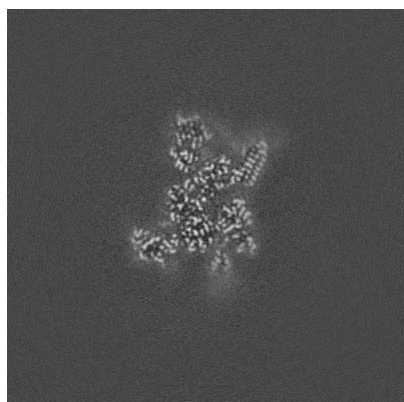


Y Index: 200

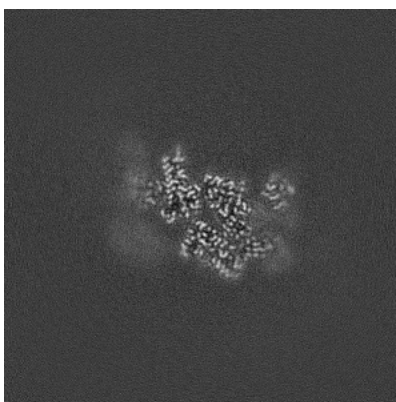


Z Index: 200

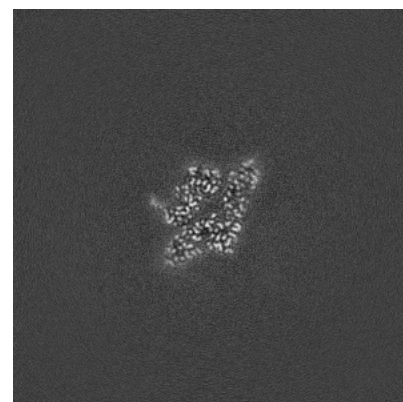
### 6.2.2 Raw map



X Index: 200



Y Index: 200

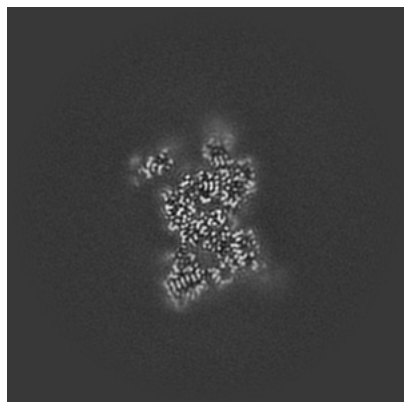


Z Index: 200

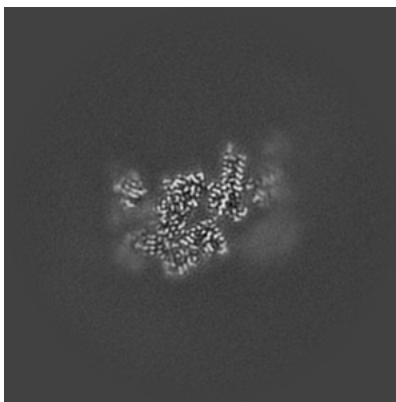
The images above show central slices of the map in three orthogonal directions.

## 6.3 Largest variance slices [i](#)

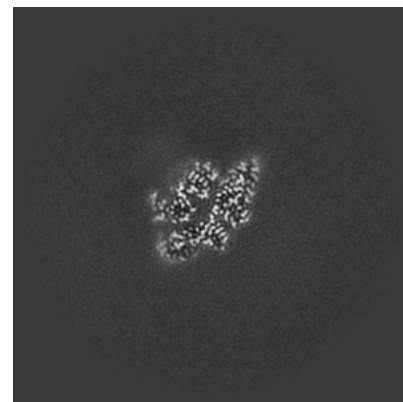
### 6.3.1 Primary map



X Index: 207

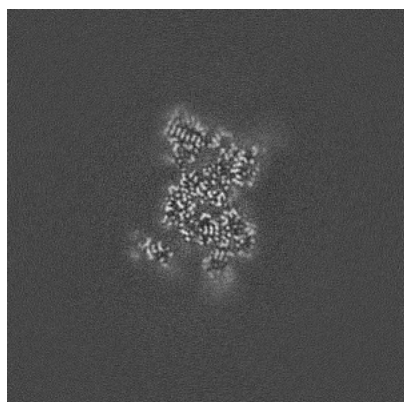


Y Index: 199

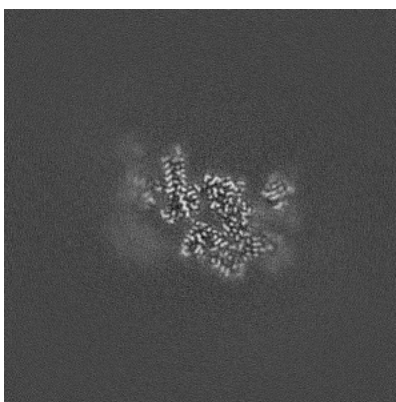


Z Index: 191

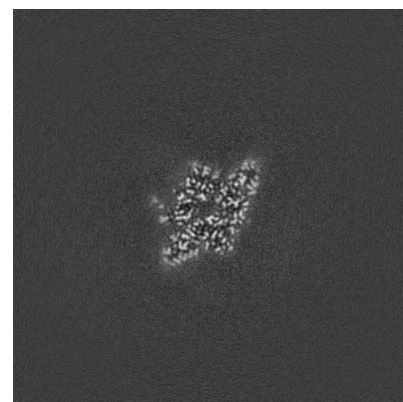
### 6.3.2 Raw map



X Index: 207



Y Index: 199

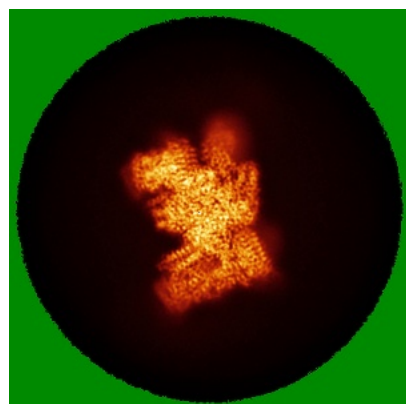


Z Index: 203

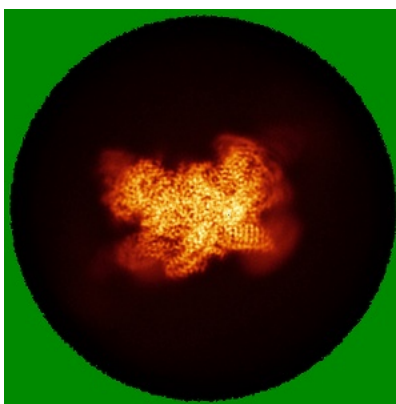
The images above show the largest variance slices of the map in three orthogonal directions.

## 6.4 Orthogonal standard-deviation projections (False-color) [i](#)

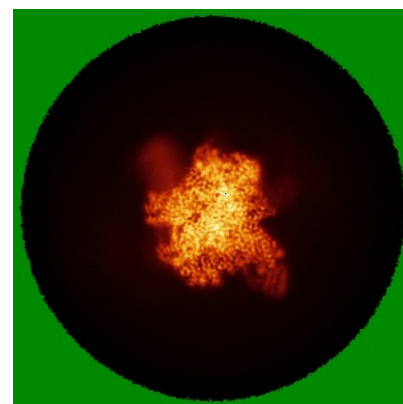
### 6.4.1 Primary map



X

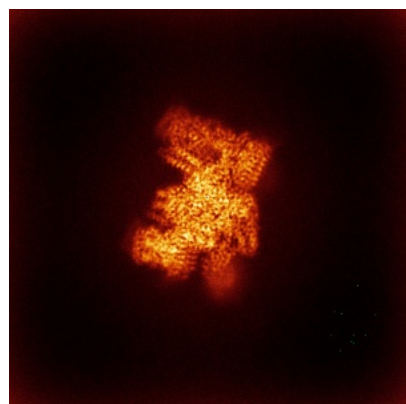


Y

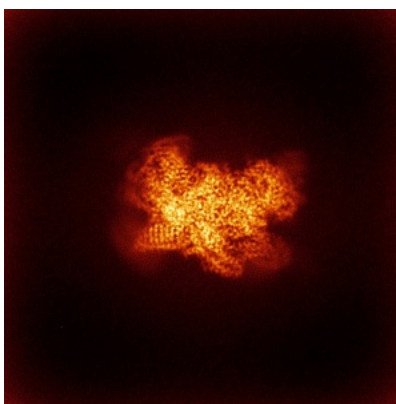


Z

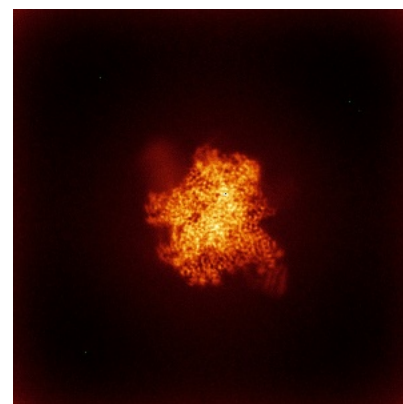
### 6.4.2 Raw map



X



Y



Z

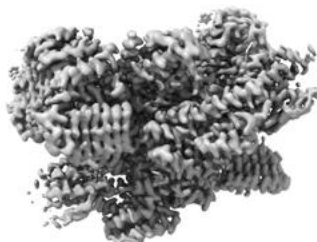
The images above show the map standard deviation projections with false color in three orthogonal directions. Minimum values are shown in green, max in blue, and dark to light orange shades represent small to large values respectively.

## 6.5 Orthogonal surface views [i](#)

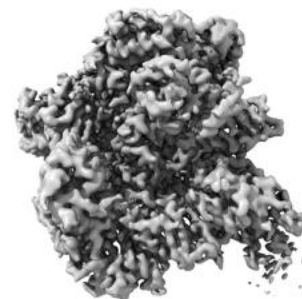
### 6.5.1 Primary map



X



Y



Z

The images above show the 3D surface view of the map at the recommended contour level 0.03. These images, in conjunction with the slice images, may facilitate assessment of whether an appropriate contour level has been provided.

### 6.5.2 Raw map



X



Y



Z

These images show the 3D surface of the raw map. The raw map's contour level was selected so that its surface encloses the same volume as the primary map does at its recommended contour level.

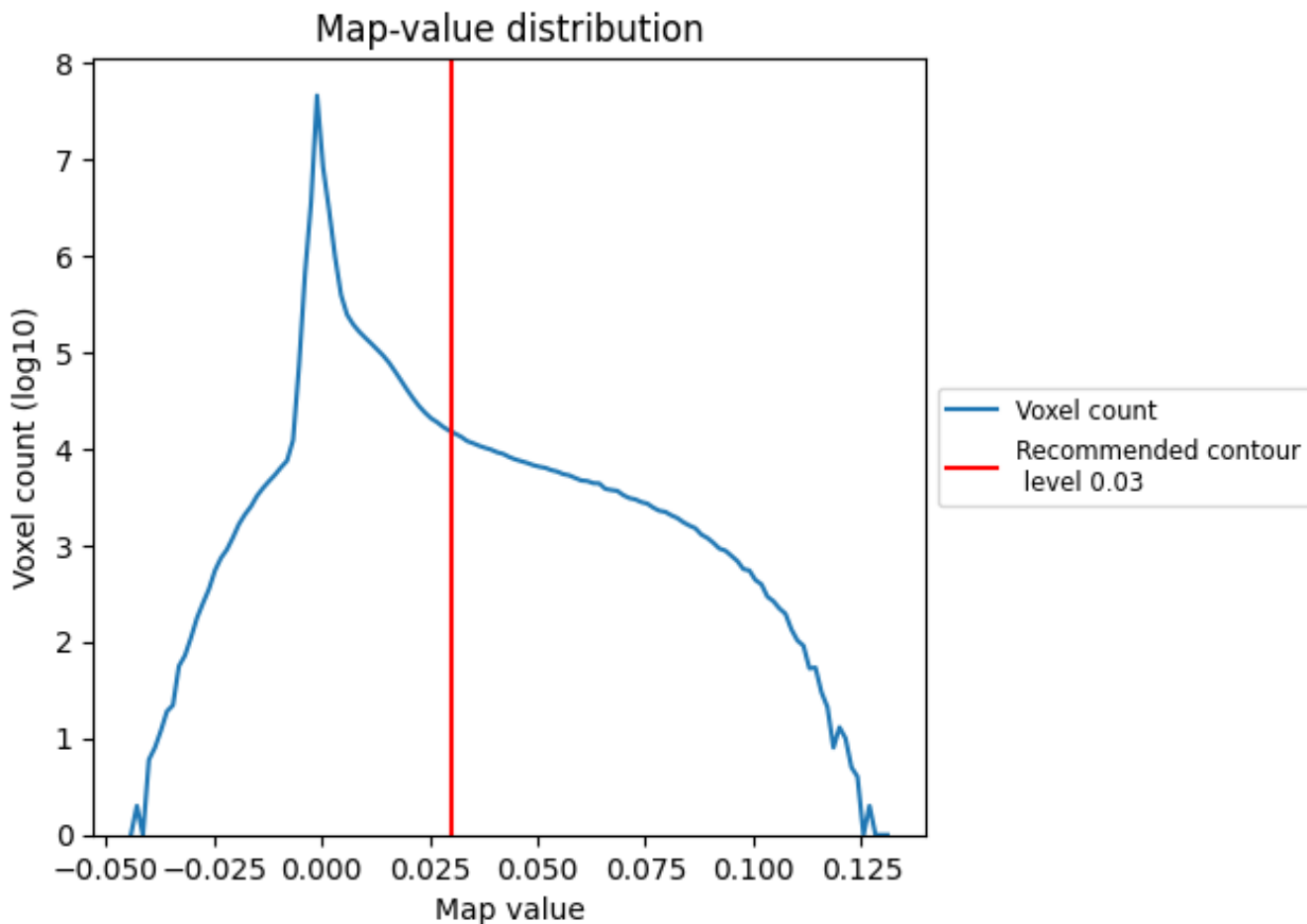
## 6.6 Mask visualisation [i](#)

This section was not generated. No masks/segmentation were deposited.

## 7 Map analysis [i](#)

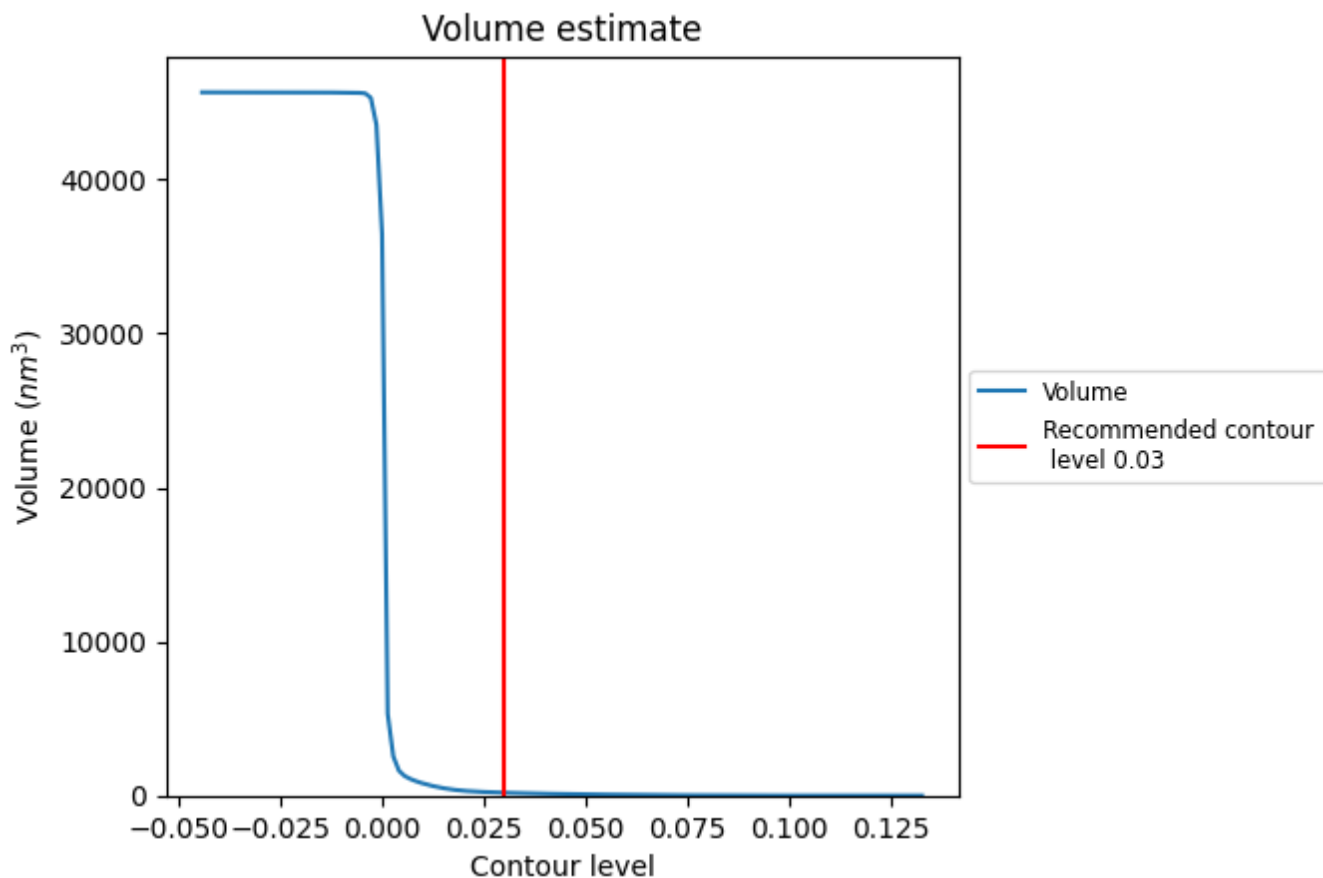
This section contains the results of statistical analysis of the map.

### 7.1 Map-value distribution [i](#)



The map-value distribution is plotted in 128 intervals along the x-axis. The y-axis is logarithmic. A spike in this graph at zero usually indicates that the volume has been masked.

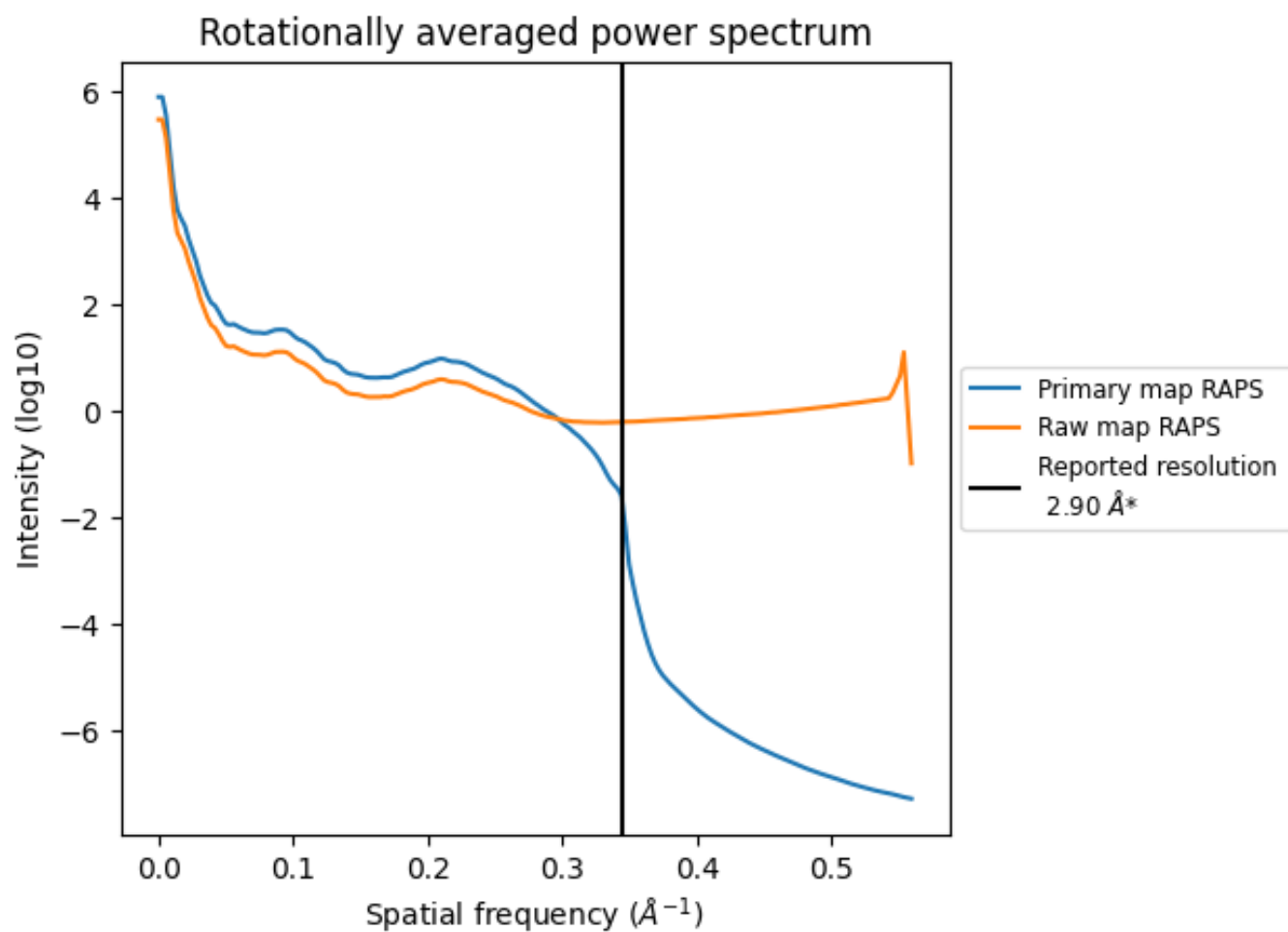
## 7.2 Volume estimate [i](#)



The volume at the recommended contour level is 184 nm<sup>3</sup>; this corresponds to an approximate mass of 166 kDa.

The volume estimate graph shows how the enclosed volume varies with the contour level. The recommended contour level is shown as a vertical line and the intersection between the line and the curve gives the volume of the enclosed surface at the given level.

### 7.3 Rotationally averaged power spectrum i

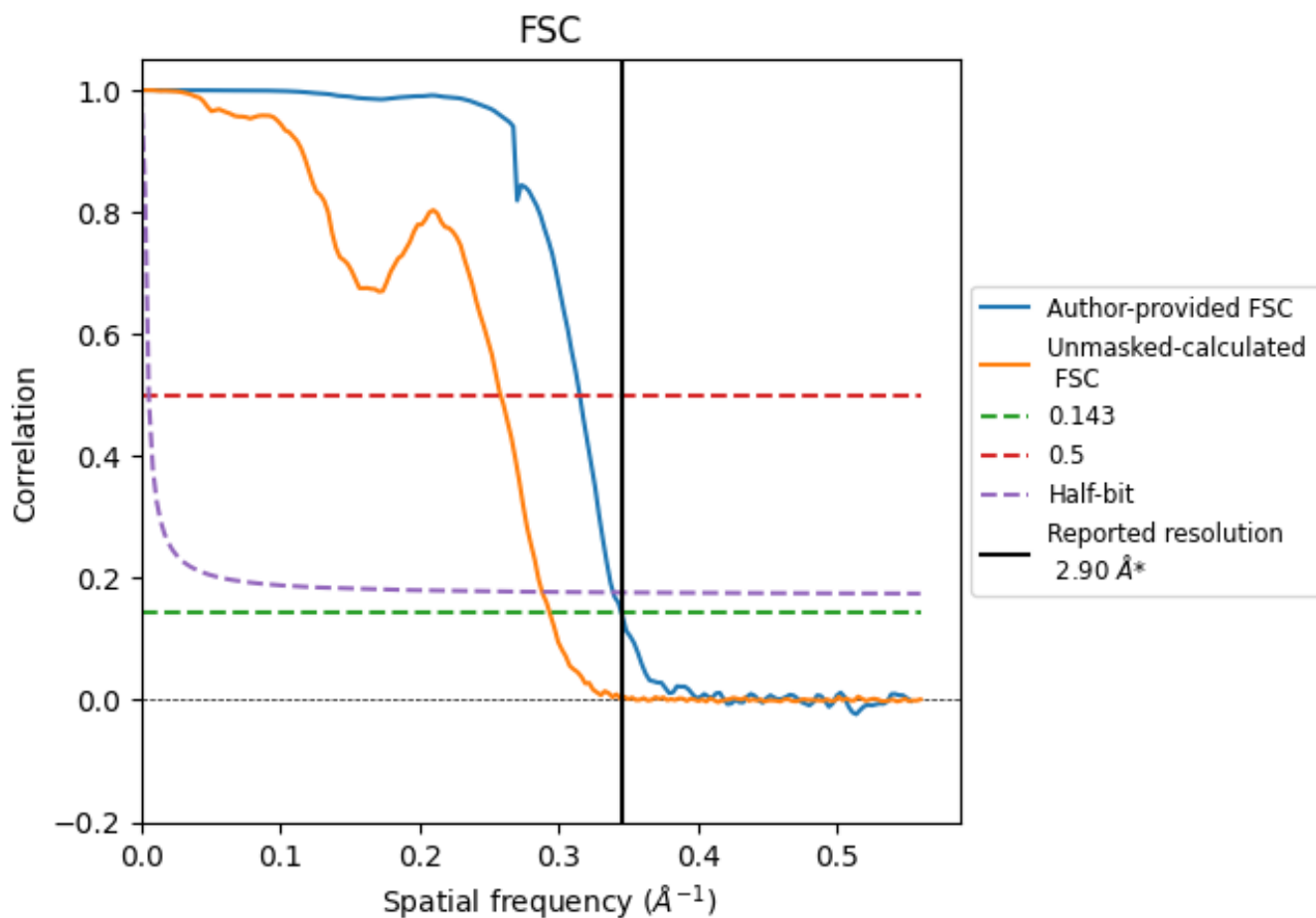


\*Reported resolution corresponds to spatial frequency of 0.345 Å<sup>-1</sup>

## 8 Fourier-Shell correlation [i](#)

Fourier-Shell Correlation (FSC) is the most commonly used method to estimate the resolution of single-particle and subtomogram-averaged maps. The shape of the curve depends on the imposed symmetry, mask and whether or not the two 3D reconstructions used were processed from a common reference. The reported resolution is shown as a black line. A curve is displayed for the half-bit criterion in addition to lines showing the 0.143 gold standard cut-off and 0.5 cut-off.

### 8.1 FSC [i](#)



\*Reported resolution corresponds to spatial frequency of 0.345 Å<sup>-1</sup>

## 8.2 Resolution estimates [i](#)

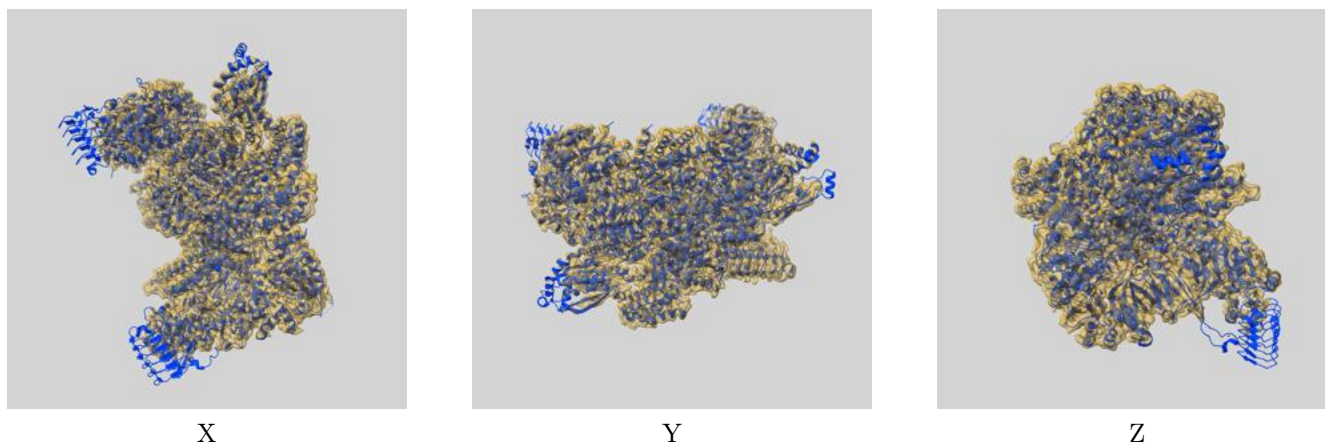
Resolution estimate (Å)	Estimation criterion (FSC cut-off)		
	0.143	0.5	Half-bit
Reported by author	2.90	-	-
Author-provided FSC curve	2.90	3.18	2.95
Unmasked-calculated*	3.41	3.88	3.47

\*Resolution estimate based on FSC curve calculated by comparison of deposited half-maps. The value from deposited half-maps intersecting FSC 0.143 CUT-OFF 3.41 differs from the reported value 2.9 by more than 10 %

## 9 Map-model fit [i](#)

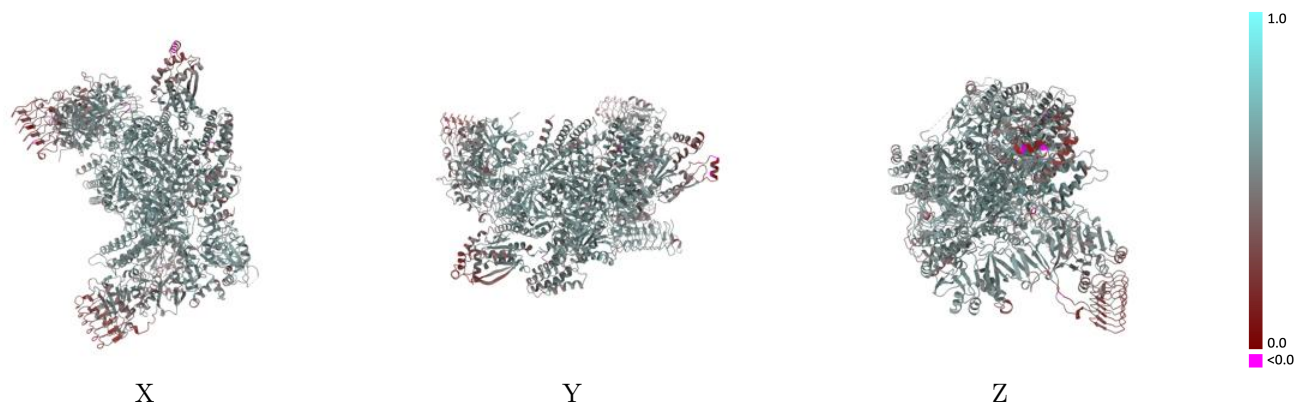
This section contains information regarding the fit between EMDB map EMD-72468 and PDB model 9Y3V. Per-residue inclusion information can be found in section 3 on page 8.

### 9.1 Map-model overlay [i](#)



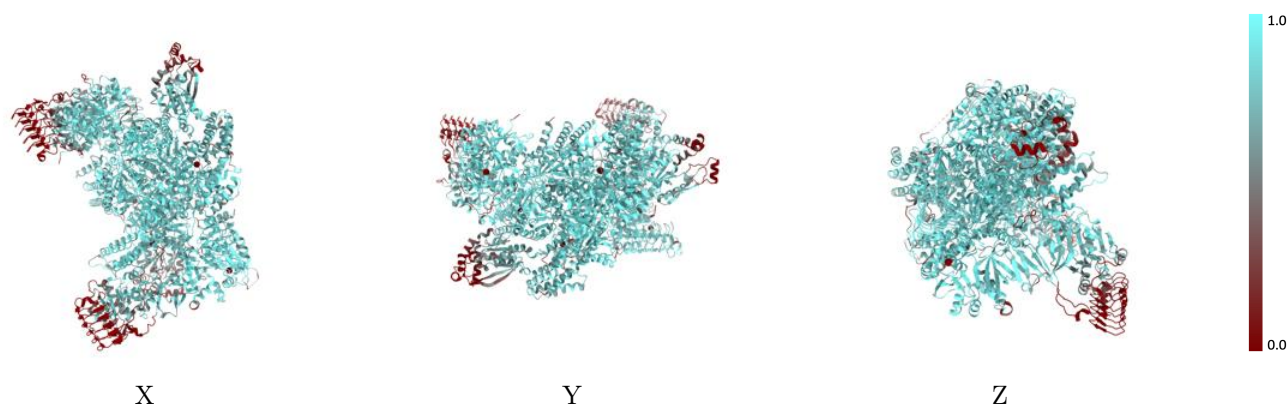
The images above show the 3D surface view of the map at the recommended contour level 0.03 at 50% transparency in yellow overlaid with a ribbon representation of the model coloured in blue. These images allow for the visual assessment of the quality of fit between the atomic model and the map.

## 9.2 Q-score mapped to coordinate model [i](#)



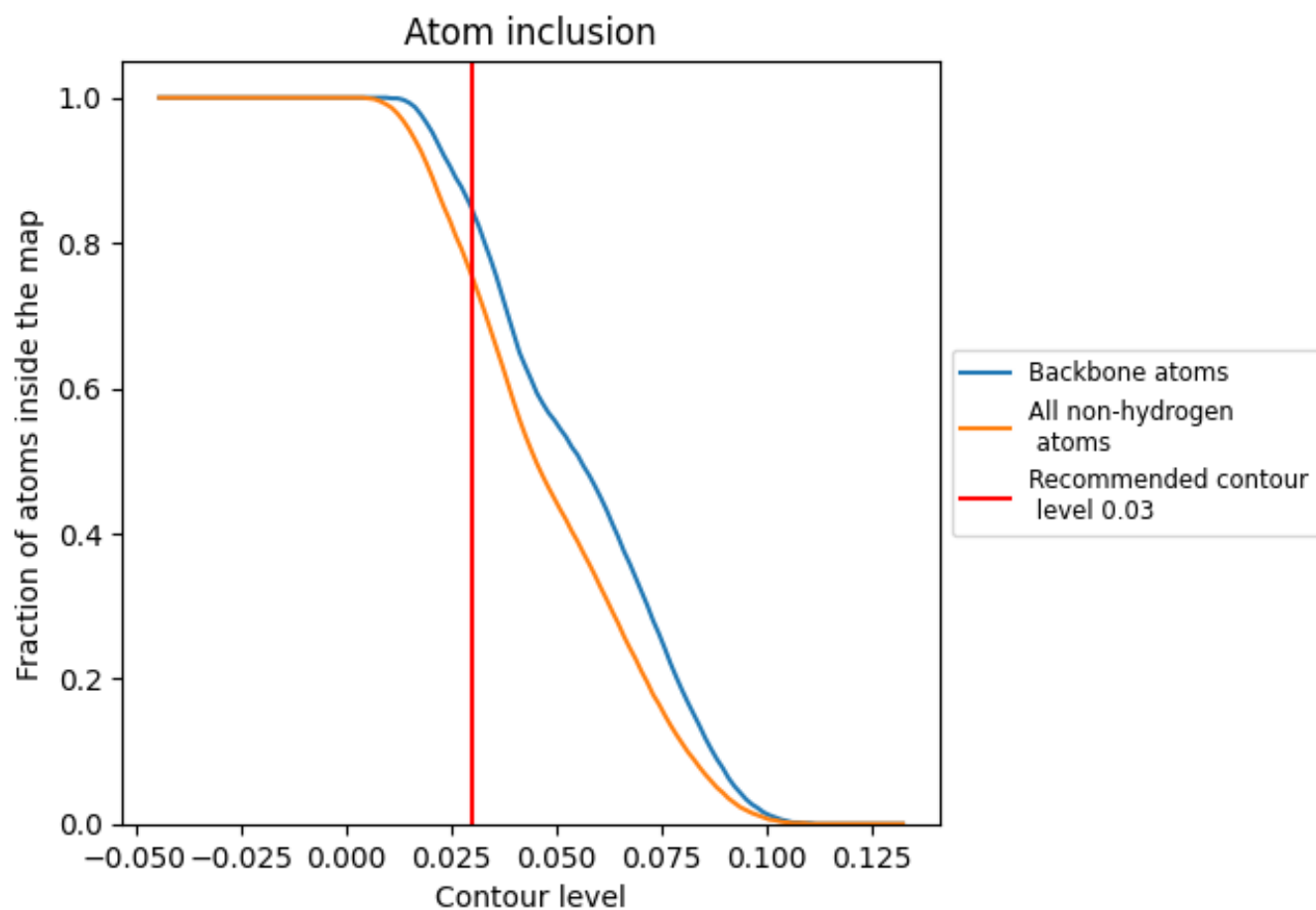
The images above show the model with each residue coloured according to its Q-score. This shows their resolvability in the map with higher Q-score values reflecting better resolvability. Please note: Q-score is calculating the resolvability of atoms, and thus high values are only expected at resolutions at which atoms can be resolved. Low Q-score values may therefore be expected for many entries.

## 9.3 Atom inclusion mapped to coordinate model [i](#)



The images above show the model with each residue coloured according to its atom inclusion. This shows to what extent they are inside the map at the recommended contour level (0.03).

















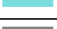







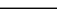
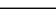
## 9.4 Atom inclusion [i](#)



At the recommended contour level, 85% of all backbone atoms, 76% of all non-hydrogen atoms, are inside the map.

## 9.5 Map-model fit summary

The table lists the average atom inclusion at the recommended contour level (0.03) and Q-score for the entire model and for each chain.

Chain	Atom inclusion	Q-score
All	 0.7550	 0.5130
A	 0.8480	 0.5410
B	 0.8520	 0.5400
C	 0.8500	 0.5380
D	 0.8570	 0.5350
E	 0.9050	 0.5680
F	 0.9180	 0.5700
G	 0.8540	 0.5440
H	 0.8700	 0.5460
I	 0.4960	 0.4310
J	 0.5140	 0.4370
K	 0.4530	 0.4280
L	 0.5910	 0.4360

