



Full wwPDB X-ray Structure Validation Report ⓘ

Jun 17, 2024 – 01:06 PM JST

PDB ID : 8XZ7
Title : FGFR1 kinase domain with a covalent inhibitor 10h
Authors : Chen, X.J.; Chen, Y.H.
Deposited on : 2024-01-20
Resolution : 1.75 Å(reported)

This is a Full wwPDB X-ray Structure Validation Report for a publicly released PDB entry.

We welcome your comments at validation@mail.wwpdb.org

A user guide is available at

<https://www.wwpdb.org/validation/2017/XrayValidationReportHelp>

with specific help available everywhere you see the ⓘ symbol.

The types of validation reports are described at

<http://www.wwpdb.org/validation/2017/FAQs#types>.

The following versions of software and data (see [references ⓘ](#)) were used in the production of this report:

MolProbity : 4.02b-467
Mogul : 1.8.5 (274361), CSD as541be (2020)
Xtriage (Phenix) : 1.13
EDS : 2.37.1
buster-report : 1.1.7 (2018)
Percentile statistics : 20191225.v01 (using entries in the PDB archive December 25th 2019)
Refmac : 5.8.0158
CCP4 : 7.0.044 (Gargrove)
Ideal geometry (proteins) : Engh & Huber (2001)
Ideal geometry (DNA, RNA) : Parkinson et al. (1996)
Validation Pipeline (wwPDB-VP) : 2.37.1

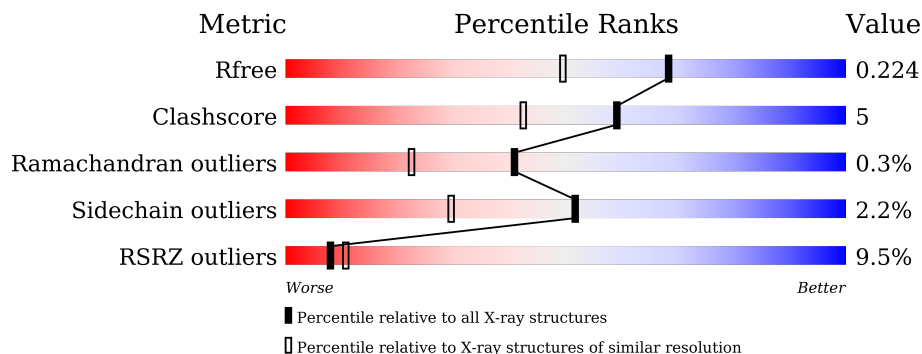
1 Overall quality at a glance

The following experimental techniques were used to determine the structure:

X-RAY DIFFRACTION

The reported resolution of this entry is 1.75 Å.

Percentile scores (ranging between 0-100) for global validation metrics of the entry are shown in the following graphic. The table shows the number of entries on which the scores are based.



Metric	Whole archive (#Entries)	Similar resolution (#Entries, resolution range(Å))
R_{free}	130704	2340 (1.76-1.76)
Clashscore	141614	2466 (1.76-1.76)
Ramachandran outliers	138981	2437 (1.76-1.76)
Sidechain outliers	138945	2437 (1.76-1.76)
RSRZ outliers	127900	2298 (1.76-1.76)

The table below summarises the geometric issues observed across the polymeric chains and their fit to the electron density. The red, orange, yellow and green segments of the lower bar indicate the fraction of residues that contain outliers for ≥ 3 , 2, 1 and 0 types of geometric quality criteria respectively. A grey segment represents the fraction of residues that are not modelled. The numeric value for each fraction is indicated below the corresponding segment, with a dot representing fractions $\leq 5\%$. The upper red bar (where present) indicates the fraction of residues that have poor fit to the electron density. The numeric value is given above the bar.

Mol	Chain	Length	Quality of chain
1	A	310	
1	B	310	

The following table lists non-polymeric compounds, carbohydrate monomers and non-standard residues in protein, DNA, RNA chains that are outliers for geometric or electron-density-fit criteria:

Mol	Type	Chain	Res	Chirality	Geometry	Clashes	Electron density
2	SO4	A	802	-	-	X	-
2	SO4	B	802	-	-	X	-

2 Entry composition [i](#)

There are 4 unique types of molecules in this entry. The entry contains 5195 atoms, of which 0 are hydrogens and 0 are deuteriums.

In the tables below, the ZeroOcc column contains the number of atoms modelled with zero occupancy, the AltConf column contains the number of residues with at least one atom in alternate conformation and the Trace column contains the number of residues modelled with at most 2 atoms.

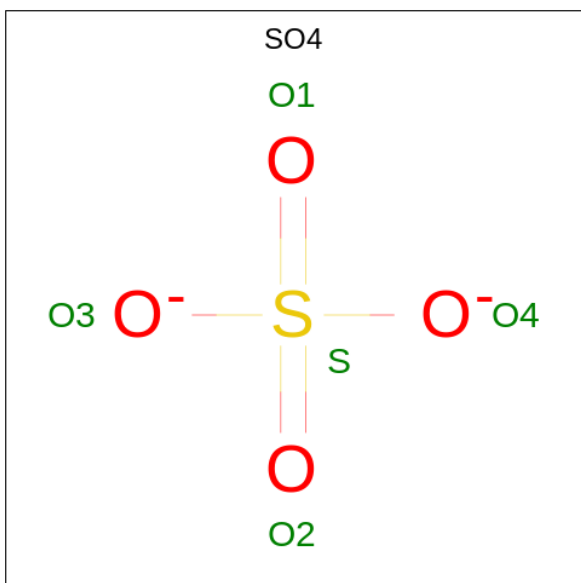
- Molecule 1 is a protein called Fibroblast growth factor receptor 1.

Mol	Chain	Residues	Atoms					ZeroOcc	AltConf	Trace
			Total	C	N	O	S			
1	B	303	2384	1514	407	444	19	0	1	0
1	A	299	2354	1496	402	437	19	0	1	0

There are 6 discrepancies between the modelled and reference sequences:

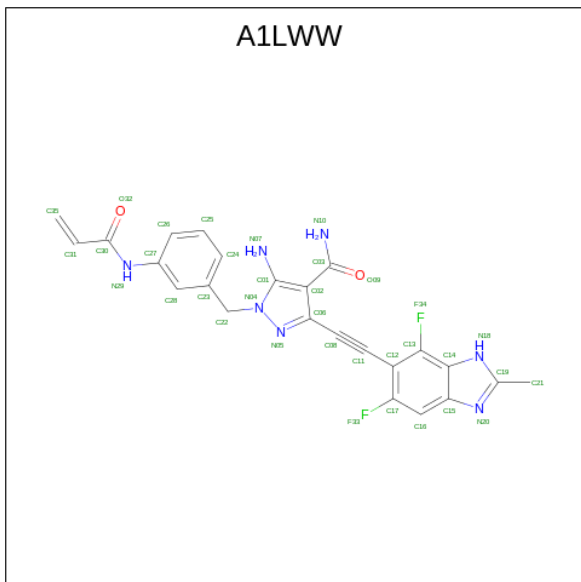
Chain	Residue	Modelled	Actual	Comment	Reference
B	456	GLY	-	expression tag	UNP P11362
B	457	PRO	-	expression tag	UNP P11362
B	584	SER	CYS	engineered mutation	UNP P11362
A	456	GLY	-	expression tag	UNP P11362
A	457	PRO	-	expression tag	UNP P11362
A	584	SER	CYS	engineered mutation	UNP P11362

- Molecule 2 is SULFATE ION (three-letter code: SO4) (formula: O₄S).



Mol	Chain	Residues	Atoms	ZeroOcc	AltConf
2	B	1	Total O S 5 4 1	0	0
2	B	1	Total O S 5 4 1	0	0
2	B	1	Total O S 5 4 1	0	0
2	A	1	Total O S 5 4 1	0	0
2	A	1	Total O S 5 4 1	0	0

- Molecule 3 is 5-azanyl-3-[2-[4,6-bis(fluoranyl)-2-methyl-3 {H}-benzimidazol-5-yl]ethynyl]-1-[3-(prop-2-enoylamino)phenyl]methyl]pyrazole-4-carboxamide (three-letter code: A1LWW) (formula: C₂₄H₁₉F₂N₇O₂) (labeled as "Ligand of Interest" by depositor).



Mol	Chain	Residues	Atoms	ZeroOcc	AltConf
3	B	1	Total C F N O 35 24 2 7 2	0	0
3	A	1	Total C F N O 35 24 2 7 2	0	0

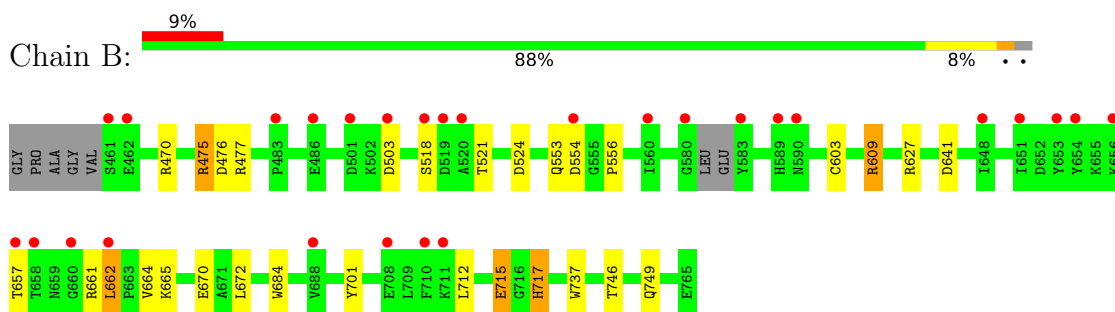
- Molecule 4 is water.

Mol	Chain	Residues	Atoms	ZeroOcc	AltConf
4	B	186	Total O 186 186	0	0
4	A	176	Total O 176 176	0	0

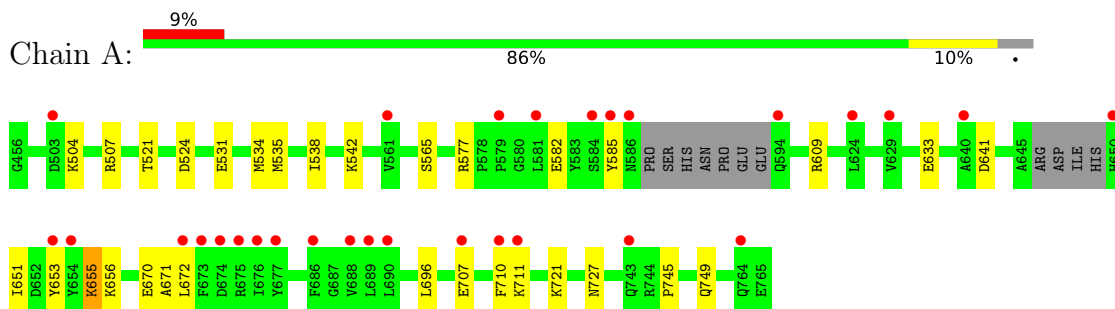
3 Residue-property plots [i](#)

These plots are drawn for all protein, RNA, DNA and oligosaccharide chains in the entry. The first graphic for a chain summarises the proportions of the various outlier classes displayed in the second graphic. The second graphic shows the sequence view annotated by issues in geometry and electron density. Residues are color-coded according to the number of geometric quality criteria for which they contain at least one outlier: green = 0, yellow = 1, orange = 2 and red = 3 or more. A red dot above a residue indicates a poor fit to the electron density ($RSRZ > 2$). Stretches of 2 or more consecutive residues without any outlier are shown as a green connector. Residues present in the sample, but not in the model, are shown in grey.

- Molecule 1: Fibroblast growth factor receptor 1



- Molecule 1: Fibroblast growth factor receptor 1



4 Data and refinement statistics i

Property	Value	Source
Space group	C 1 2 1	Depositor
Cell constants a, b, c, α , β , γ	210.34Å 49.63Å 66.74Å 90.00° 106.94° 90.00°	Depositor
Resolution (Å)	26.14 – 1.75 26.14 – 1.75	Depositor EDS
% Data completeness (in resolution range)	97.1 (26.14-1.75) 97.1 (26.14-1.75)	Depositor EDS
R_{merge}	0.13	Depositor
R_{sym}	(Not available)	Depositor
$\langle I/\sigma(I) \rangle$ ¹	2.29 (at 1.75Å)	Xtrriage
Refinement program	PHENIX (1.19.2_4158: ???)	Depositor
R, R_{free}	0.186 , 0.225 0.186 , 0.224	Depositor DCC
R_{free} test set	3228 reflections (4.97%)	wwPDB-VP
Wilson B-factor (Å ²)	25.3	Xtrriage
Anisotropy	0.426	Xtrriage
Bulk solvent k_{sol} (e/Å ³), B_{sol} (Å ²)	0.36 , 51.2	EDS
L-test for twinning ²	$\langle L \rangle = 0.49$, $\langle L^2 \rangle = 0.32$	Xtrriage
Estimated twinning fraction	0.021 for -h-2*1,-k,l	Xtrriage
F_o, F_c correlation	0.96	EDS
Total number of atoms	5195	wwPDB-VP
Average B, all atoms (Å ²)	33.0	wwPDB-VP

Xtrriage's analysis on translational NCS is as follows: *The largest off-origin peak in the Patterson function is 5.47% of the height of the origin peak. No significant pseudotranslation is detected.*

¹Intensities estimated from amplitudes.

²Theoretical values of $\langle |L| \rangle$, $\langle L^2 \rangle$ for acentric reflections are 0.5, 0.333 respectively for untwinned datasets, and 0.375, 0.2 for perfectly twinned datasets.

5 Model quality [i](#)

5.1 Standard geometry [i](#)

Bond lengths and bond angles in the following residue types are not validated in this section: A1LWW, SO4

The Z score for a bond length (or angle) is the number of standard deviations the observed value is removed from the expected value. A bond length (or angle) with $|Z| > 5$ is considered an outlier worth inspection. RMSZ is the root-mean-square of all Z scores of the bond lengths (or angles).

Mol	Chain	Bond lengths		Bond angles	
		RMSZ	# $ Z > 5$	RMSZ	# $ Z > 5$
1	A	0.44	0/2408	0.63	0/3257
1	B	0.50	2/2443 (0.1%)	0.67	1/3312 (0.0%)
All	All	0.47	2/4851 (0.0%)	0.65	1/6569 (0.0%)

All (2) bond length outliers are listed below:

Mol	Chain	Res	Type	Atoms	Z	Observed(Å)	Ideal(Å)
1	B	603[A]	CYS	CB-SG	-5.24	1.73	1.81
1	B	603[B]	CYS	CB-SG	-5.24	1.73	1.81

All (1) bond angle outliers are listed below:

Mol	Chain	Res	Type	Atoms	Z	Observed(°)	Ideal(°)
1	B	715	GLU	CA-CB-CG	5.39	125.27	113.40

There are no chirality outliers.

There are no planarity outliers.

5.2 Too-close contacts [i](#)

In the following table, the Non-H and H(model) columns list the number of non-hydrogen atoms and hydrogen atoms in the chain respectively. The H(added) column lists the number of hydrogen atoms added and optimized by MolProbity. The Clashes column lists the number of clashes within the asymmetric unit, whereas Symm-Clashes lists symmetry-related clashes.

Mol	Chain	Non-H	H(model)	H(added)	Clashes	Symm-Clashes
1	A	2354	0	2338	25	0
1	B	2384	0	2336	20	0
2	A	10	0	0	2	0

Continued on next page...

Continued from previous page...

Mol	Chain	Non-H	H(model)	H(added)	Clashes	Symm-Clashes
2	B	15	0	0	2	0
3	A	35	0	0	0	0
3	B	35	0	0	0	0
4	A	176	0	0	0	0
4	B	186	0	0	2	0
All	All	5195	0	4674	45	0

The all-atom clashscore is defined as the number of clashes found per 1000 atoms (including hydrogen atoms). The all-atom clashscore for this structure is 5.

All (45) close contacts within the same asymmetric unit are listed below, sorted by their clash magnitude.

Atom-1	Atom-2	Interatomic distance (Å)	Clash overlap (Å)
1:B:715:GLU:HG3	1:B:717:HIS:CE1	2.10	0.86
1:B:664:VAL:HG23	1:B:672:LEU:HD21	1.60	0.81
1:B:715:GLU:HG3	1:B:717:HIS:HE1	1.45	0.77
1:B:662:LEU:HD23	1:B:665:LYS:HG3	1.66	0.77
1:B:665:LYS:HE2	1:B:701:TYR:HB2	1.69	0.74
1:A:672:LEU:HD21	1:A:710:PHE:HE1	1.53	0.72
1:A:672:LEU:HD21	1:A:710:PHE:CE1	2.25	0.71
1:A:609:ARG:NH1	2:A:802:SO4:O2	2.22	0.68
1:A:542:LYS:NZ	2:A:802:SO4:O3	2.26	0.67
1:B:664:VAL:CG2	1:B:672:LEU:HD21	2.29	0.63
1:A:504:LYS:HZ2	1:A:507:ARG:NH1	1.98	0.62
1:B:712:LEU:HD21	1:B:717:HIS:HB2	1.81	0.62
1:A:534:MET:SD	1:A:538:ILE:HD12	2.40	0.61
1:B:503:ASP:OD1	1:B:503:ASP:N	2.29	0.60
1:A:582:GLU:OE1	1:A:582:GLU:N	2.27	0.59
1:A:707:GLU:CD	1:A:707:GLU:H	2.06	0.59
1:B:657:THR:HG21	2:B:802:SO4:O2	2.04	0.58
1:A:655:LYS:HD3	1:A:656:LYS:O	2.03	0.58
1:B:627:ARG:HD2	2:B:802:SO4:O2	2.05	0.57
1:B:521:THR:HG23	1:B:524:ASP:H	1.69	0.56
1:A:521:THR:HG23	1:A:524:ASP:H	1.71	0.56
1:A:653:TYR:CZ	1:A:672:LEU:HD12	2.41	0.56
1:A:504:LYS:NZ	1:A:507:ARG:NH1	2.54	0.55
1:B:475:ARG:NH2	1:B:556:PRO:O	2.24	0.54
1:B:476:ASP:OD2	1:B:477:ARG:NE	2.43	0.51
1:A:577:ARG:HG2	1:A:696:LEU:HB3	1.93	0.51
1:A:653:TYR:OH	1:A:672:LEU:O	2.23	0.50
1:A:565:SER:OG	1:A:633:GLU:HG2	2.12	0.50

Continued on next page...

Continued from previous page...

Atom-1	Atom-2	Interatomic distance (Å)	Clash overlap (Å)
1:A:721:LYS:NZ	1:A:727:ASN:OD1	2.38	0.48
1:A:582:GLU:H	1:A:582:GLU:CD	2.17	0.47
1:A:670:GLU:HG2	1:A:671:ALA:N	2.31	0.46
1:B:657:THR:HG22	1:B:661:ARG:H	1.81	0.46
1:B:475:ARG:HD3	1:B:554:ASP:O	2.15	0.46
1:A:504:LYS:HB2	1:A:504:LYS:HE3	1.80	0.45
1:B:609:ARG:NH2	4:B:903:HOH:O	2.30	0.43
1:A:655:LYS:HE3	1:A:655:LYS:HA	2.00	0.42
1:B:684:TRP:CE3	1:B:737:TRP:HA	2.55	0.42
1:A:504:LYS:HZ2	1:A:507:ARG:CZ	2.31	0.42
1:A:655:LYS:HD3	1:A:656:LYS:N	2.35	0.42
1:B:746:THR:OG1	1:B:749:GLN:HG3	2.19	0.42
1:B:712:LEU:CD2	1:B:717:HIS:HB2	2.50	0.41
1:A:504:LYS:HZ2	1:A:507:ARG:HD2	1.85	0.41
1:A:531:GLU:O	1:A:535:MET:HG3	2.21	0.40
1:B:670:GLU:HG3	4:B:968:HOH:O	2.21	0.40
1:A:745:PRO:HA	1:A:749:GLN:NE2	2.36	0.40

There are no symmetry-related clashes.

5.3 Torsion angles [i](#)

5.3.1 Protein backbone [i](#)

In the following table, the Percentiles column shows the percent Ramachandran outliers of the chain as a percentile score with respect to all X-ray entries followed by that with respect to entries of similar resolution.

The Analysed column shows the number of residues for which the backbone conformation was analysed, and the total number of residues.

Mol	Chain	Analysed	Favoured	Allowed	Outliers	Percentiles	
1	A	294/310 (95%)	289 (98%)	3 (1%)	2 (1%)	22	8
1	B	300/310 (97%)	296 (99%)	4 (1%)	0	100	100
All	All	594/620 (96%)	585 (98%)	7 (1%)	2 (0%)	41	22

All (2) Ramachandran outliers are listed below:

Mol	Chain	Res	Type
1	A	585	TYR

Continued on next page...

Continued from previous page...

Mol	Chain	Res	Type
1	A	651	ILE

5.3.2 Protein sidechains [i](#)

In the following table, the Percentiles column shows the percent sidechain outliers of the chain as a percentile score with respect to all X-ray entries followed by that with respect to entries of similar resolution.

The Analysed column shows the number of residues for which the sidechain conformation was analysed, and the total number of residues.

Mol	Chain	Analysed	Rotameric	Outliers	Percentiles	
1	A	255/271 (94%)	252 (99%)	3 (1%)	71	56
1	B	258/271 (95%)	250 (97%)	8 (3%)	40	17
All	All	513/542 (95%)	502 (98%)	11 (2%)	52	31

All (11) residues with a non-rotameric sidechain are listed below:

Mol	Chain	Res	Type
1	B	470	ARG
1	B	475	ARG
1	B	518	SER
1	B	553	GLN
1	B	609	ARG
1	B	641	ASP
1	B	662	LEU
1	B	717	HIS
1	A	641	ASP
1	A	655	LYS
1	A	711	LYS

Sometimes sidechains can be flipped to improve hydrogen bonding and reduce clashes. All (3) such sidechains are listed below:

Mol	Chain	Res	Type
1	B	717	HIS
1	A	659	ASN
1	A	749	GLN

5.3.3 RNA [i](#)

There are no RNA molecules in this entry.

5.4 Non-standard residues in protein, DNA, RNA chains [i](#)

There are no non-standard protein/DNA/RNA residues in this entry.

5.5 Carbohydrates [i](#)

There are no monosaccharides in this entry.

5.6 Ligand geometry [i](#)

7 ligands are modelled in this entry.

In the following table, the Counts columns list the number of bonds (or angles) for which Mogul statistics could be retrieved, the number of bonds (or angles) that are observed in the model and the number of bonds (or angles) that are defined in the Chemical Component Dictionary. The Link column lists molecule types, if any, to which the group is linked. The Z score for a bond length (or angle) is the number of standard deviations the observed value is removed from the expected value. A bond length (or angle) with $|Z| > 2$ is considered an outlier worth inspection. RMSZ is the root-mean-square of all Z scores of the bond lengths (or angles).

Mol	Type	Chain	Res	Link	Bond lengths			Bond angles		
					Counts	RMSZ	# Z > 2	Counts	RMSZ	# Z > 2
3	A1LWW	A	803	1	32,38,38	2.41	10 (31%)	35,55,55	2.46	8 (22%)
2	SO4	B	803	-	4,4,4	0.12	0	6,6,6	0.12	0
2	SO4	B	801	-	4,4,4	0.18	0	6,6,6	0.07	0
3	A1LWW	B	804	1	32,38,38	2.68	11 (34%)	35,55,55	2.03	5 (14%)
2	SO4	A	802	-	4,4,4	0.11	0	6,6,6	0.21	0
2	SO4	B	802	-	4,4,4	0.15	0	6,6,6	0.28	0
2	SO4	A	801	-	4,4,4	0.33	0	6,6,6	0.59	0

In the following table, the Chirals column lists the number of chiral outliers, the number of chiral centers analysed, the number of these observed in the model and the number defined in the Chemical Component Dictionary. Similar counts are reported in the Torsion and Rings columns. '-' means no outliers of that kind were identified.

Mol	Type	Chain	Res	Link	Chirals	Torsions	Rings
3	A1LWW	B	804	1	-	2/12/19/19	0/4/4/4
3	A1LWW	A	803	1	-	2/12/19/19	0/4/4/4

All (21) bond length outliers are listed below:

Mol	Chain	Res	Type	Atoms	Z	Observed(Å)	Ideal(Å)
3	B	804	A1LWW	C03-N10	7.36	1.47	1.33
3	B	804	A1LWW	C30-N29	6.27	1.46	1.35
3	A	803	A1LWW	C03-N10	6.16	1.44	1.33
3	A	803	A1LWW	C30-N29	5.80	1.45	1.35
3	B	804	A1LWW	C06-C08	5.12	1.50	1.43
3	A	803	A1LWW	C06-C08	4.66	1.49	1.43
3	B	804	A1LWW	C35-C31	4.60	1.53	1.30
3	A	803	A1LWW	C35-C31	4.48	1.52	1.30
3	B	804	A1LWW	C12-C11	4.37	1.50	1.43
3	B	804	A1LWW	C31-C30	4.05	1.54	1.48
3	A	803	A1LWW	C12-C11	3.91	1.49	1.43
3	A	803	A1LWW	C01-N07	3.66	1.44	1.33
3	B	804	A1LWW	C01-N07	3.44	1.44	1.33
3	B	804	A1LWW	O32-C30	-3.11	1.18	1.24
3	A	803	A1LWW	C31-C30	3.06	1.53	1.48
3	A	803	A1LWW	O32-C30	-2.86	1.18	1.24
3	B	804	A1LWW	C16-C17	2.81	1.39	1.35
3	B	804	A1LWW	C27-N29	2.70	1.47	1.41
3	A	803	A1LWW	C27-N29	2.59	1.46	1.41
3	B	804	A1LWW	O09-C03	-2.40	1.19	1.24
3	A	803	A1LWW	O09-C03	-2.15	1.20	1.24

All (13) bond angle outliers are listed below:

Mol	Chain	Res	Type	Atoms	Z	Observed(°)	Ideal(°)
3	A	803	A1LWW	C35-C31-C30	-11.45	109.17	122.27
3	B	804	A1LWW	C31-C30-N29	7.06	118.49	113.84
3	B	804	A1LWW	C35-C31-C30	-6.63	114.69	122.27
3	A	803	A1LWW	C31-C30-N29	4.36	116.71	113.84
3	A	803	A1LWW	O09-C03-N10	-2.65	118.81	122.58
3	B	804	A1LWW	O09-C03-N10	-2.63	118.84	122.58
3	A	803	A1LWW	C23-C22-N04	-2.34	109.06	112.48
3	A	803	A1LWW	F33-C17-C16	2.28	123.48	120.47
3	B	804	A1LWW	C13-C12-C11	-2.24	118.42	121.62
3	B	804	A1LWW	C16-C17-C12	-2.22	119.50	122.70
3	A	803	A1LWW	C22-N04-N05	2.22	124.00	117.77
3	A	803	A1LWW	C17-C12-C11	-2.15	117.81	121.56
3	A	803	A1LWW	F34-C13-C14	2.02	122.40	118.12

There are no chirality outliers.

All (4) torsion outliers are listed below:

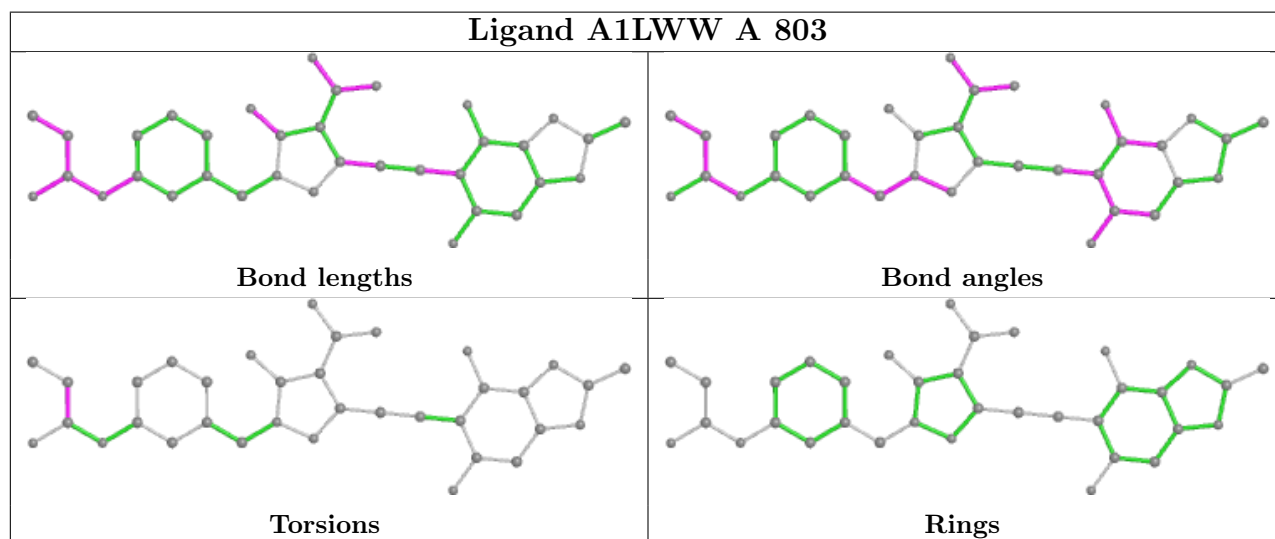
Mol	Chain	Res	Type	Atoms
3	B	804	A1LWW	N29-C30-C31-C35
3	B	804	A1LWW	O32-C30-C31-C35
3	A	803	A1LWW	N29-C30-C31-C35
3	A	803	A1LWW	O32-C30-C31-C35

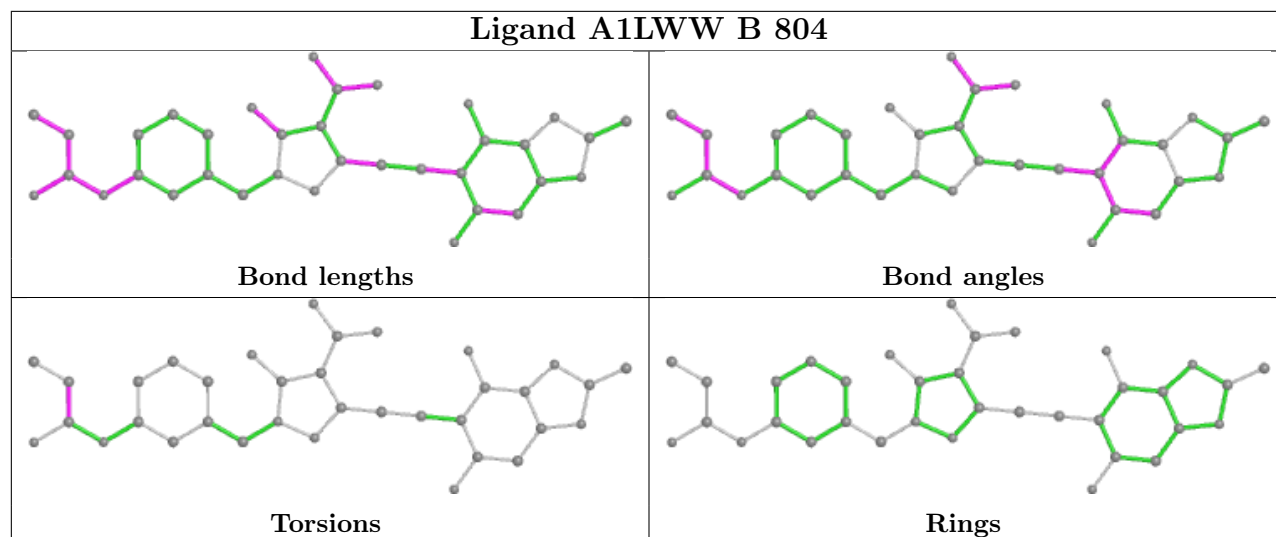
There are no ring outliers.

2 monomers are involved in 4 short contacts:

Mol	Chain	Res	Type	Clashes	Symm-Clashes
2	A	802	SO4	2	0
2	B	802	SO4	2	0

The following is a two-dimensional graphical depiction of Mogul quality analysis of bond lengths, bond angles, torsion angles, and ring geometry for all instances of the Ligand of Interest. In addition, ligands with molecular weight > 250 and outliers as shown on the validation Tables will also be included. For torsion angles, if less than 5% of the Mogul distribution of torsion angles is within 10 degrees of the torsion angle in question, then that torsion angle is considered an outlier. Any bond that is central to one or more torsion angles identified as an outlier by Mogul will be highlighted in the graph. For rings, the root-mean-square deviation (RMSD) between the ring in question and similar rings identified by Mogul is calculated over all ring torsion angles. If the average RMSD is greater than 60 degrees and the minimal RMSD between the ring in question and any Mogul-identified rings is also greater than 60 degrees, then that ring is considered an outlier. The outliers are highlighted in purple. The color gray indicates Mogul did not find sufficient equivalents in the CSD to analyse the geometry.





5.7 Other polymers [\(i\)](#)

There are no such residues in this entry.

5.8 Polymer linkage issues [\(i\)](#)

There are no chain breaks in this entry.

6 Fit of model and data

6.1 Protein, DNA and RNA chains

In the following table, the column labelled ‘#RSRZ > 2’ contains the number (and percentage) of RSRZ outliers, followed by percent RSRZ outliers for the chain as percentile scores relative to all X-ray entries and entries of similar resolution. The OWAB column contains the minimum, median, 95th percentile and maximum values of the occupancy-weighted average B-factor per residue. The column labelled ‘Q < 0.9’ lists the number of (and percentage) of residues with an average occupancy less than 0.9.

Mol	Chain	Analysed	<RSRZ>	#RSRZ>2	OWAB(Å ²)	Q<0.9
1	A	299/310 (96%)	0.42	29 (9%) 7 10	18, 29, 57, 75	0
1	B	303/310 (97%)	0.45	28 (9%) 9 11	14, 30, 62, 79	0
All	All	602/620 (97%)	0.44	57 (9%) 8 11	14, 29, 60, 79	0

All (57) RSRZ outliers are listed below:

Mol	Chain	Res	Type	RSRZ
1	B	658	THR	6.5
1	A	673	PHE	5.8
1	A	581	LEU	5.4
1	B	657	THR	5.3
1	A	594	GLN	4.6
1	B	519	ASP	4.5
1	B	590	ASN	4.4
1	B	461	SER	4.2
1	A	710	PHE	4.2
1	A	653	TYR	3.9
1	B	520	ALA	3.9
1	B	503	ASP	3.7
1	B	580	GLY	3.6
1	B	651	ILE	3.6
1	B	648	ILE	3.6
1	B	486	GLU	3.6
1	B	711	LYS	3.5
1	A	650	HIS	3.5
1	A	764	GLN	3.4
1	A	674	ASP	3.4
1	A	689	LEU	3.3
1	B	518	SER	3.3
1	A	585	TYR	3.3
1	A	584	SER	3.3

Continued on next page...

Continued from previous page...

Mol	Chain	Res	Type	RSRZ
1	B	656	LYS	3.2
1	B	554	ASP	3.2
1	B	662	LEU	3.2
1	A	629	VAL	3.1
1	A	677	TYR	3.1
1	B	589	HIS	3.1
1	A	654	TYR	3.1
1	A	688	VAL	3.0
1	B	653	TYR	2.7
1	B	501	ASP	2.7
1	A	503	ASP	2.7
1	A	676	ILE	2.7
1	A	586	ASN	2.5
1	A	743	GLN	2.4
1	B	660	GLY	2.4
1	B	654	TYR	2.4
1	B	708	GLU	2.4
1	B	688	VAL	2.3
1	A	624	LEU	2.3
1	A	640	ALA	2.3
1	B	462	GLU	2.3
1	A	561	VAL	2.2
1	B	583	TYR	2.1
1	A	707	GLU	2.1
1	A	579	PRO	2.1
1	A	686	PHE	2.1
1	A	672	LEU	2.1
1	B	560	ILE	2.1
1	A	711	LYS	2.1
1	A	675	ARG	2.1
1	B	710	PHE	2.0
1	A	690	LEU	2.0
1	B	483	PRO	2.0

6.2 Non-standard residues in protein, DNA, RNA chains [i](#)

There are no non-standard protein/DNA/RNA residues in this entry.

6.3 Carbohydrates [i](#)

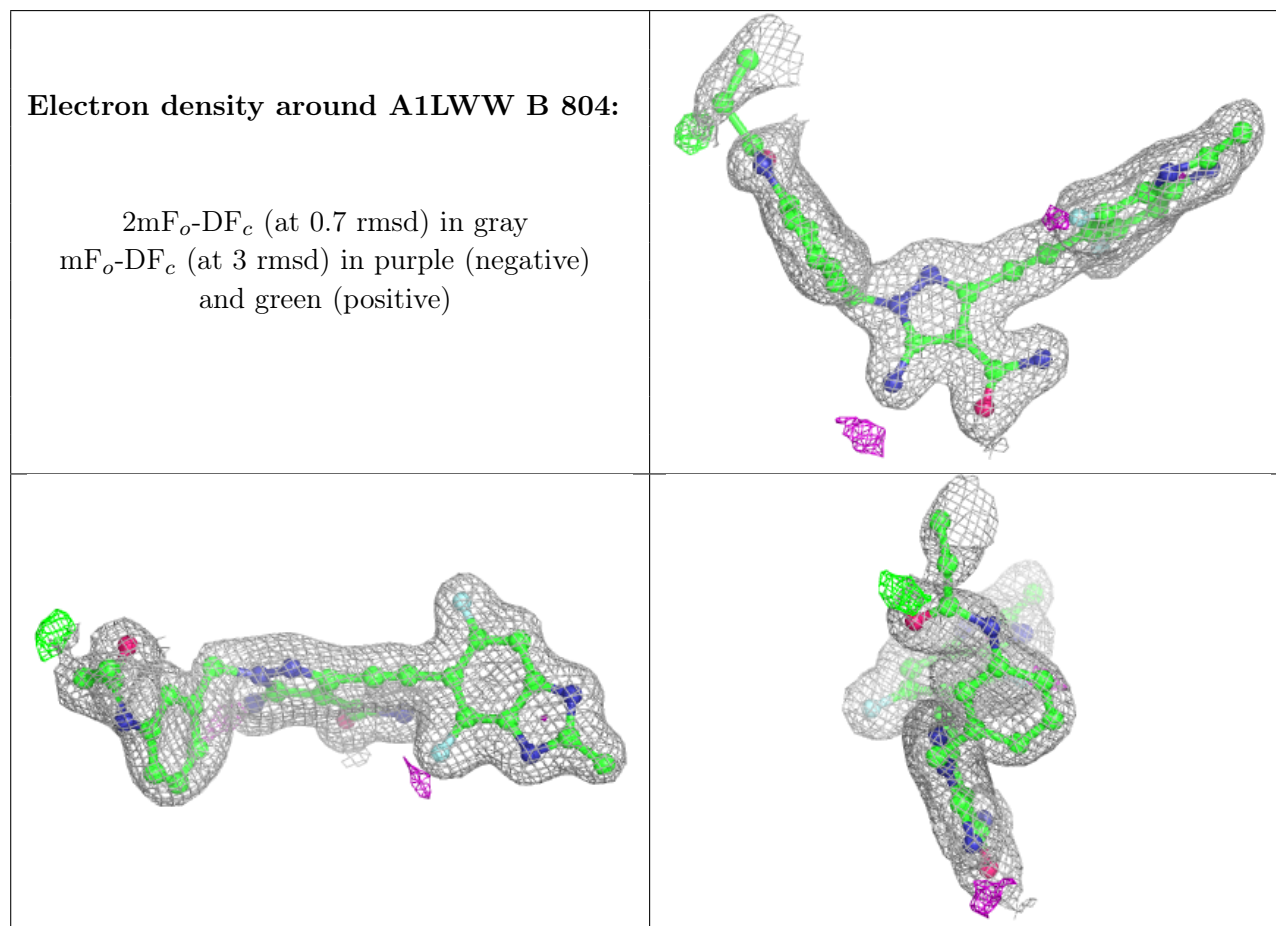
There are no monosaccharides in this entry.

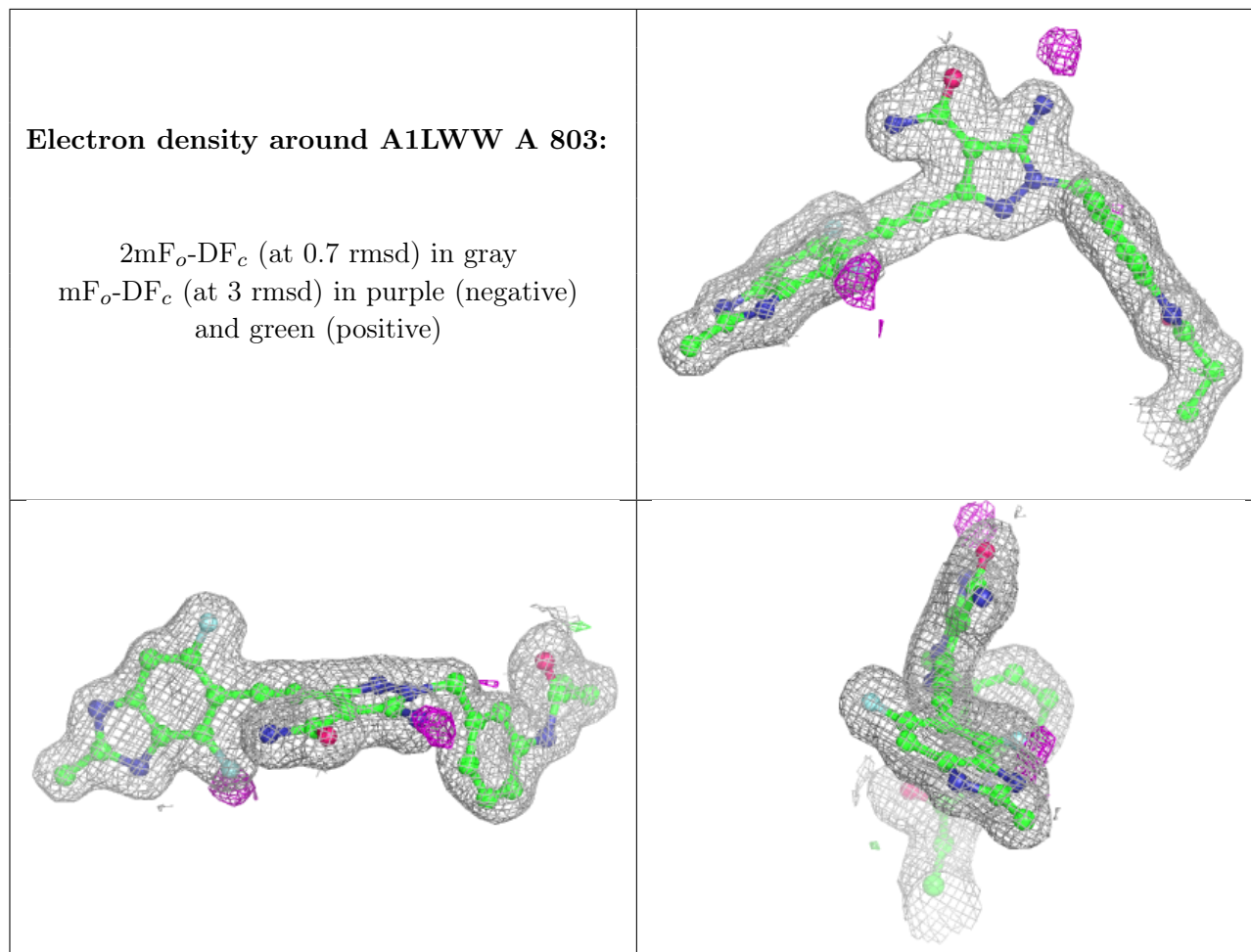
6.4 Ligands [i](#)

In the following table, the Atoms column lists the number of modelled atoms in the group and the number defined in the chemical component dictionary. The B-factors column lists the minimum, median, 95th percentile and maximum values of B factors of atoms in the group. The column labelled 'Q< 0.9' lists the number of atoms with occupancy less than 0.9.

Mol	Type	Chain	Res	Atoms	RSCC	RSR	B-factors(\AA^2)	Q<0.9
2	SO4	A	802	5/5	0.86	0.26	73,75,77,87	0
2	SO4	B	802	5/5	0.91	0.14	69,70,79,94	0
3	A1LWW	B	804	35/35	0.91	0.10	22,29,58,61	0
3	A1LWW	A	803	35/35	0.92	0.10	18,25,34,38	0
2	SO4	B	801	5/5	0.96	0.10	46,51,66,70	0
2	SO4	A	801	5/5	0.98	0.07	30,35,40,46	0
2	SO4	B	803	5/5	0.98	0.14	57,58,68,71	0

The following is a graphical depiction of the model fit to experimental electron density of all instances of the Ligand of Interest. In addition, ligands with molecular weight > 250 and outliers as shown on the geometry validation Tables will also be included. Each fit is shown from different orientation to approximate a three-dimensional view.





6.5 Other polymers [i](#)

There are no such residues in this entry.