



## Full wwPDB EM Validation Report ⓘ

Aug 25, 2024 – 12:10 AM JST

PDB ID : 8XUO  
EMDB ID : EMD-38679  
Title : Cryo-EM structure of tomato NRC2 dimer  
Authors : Sun, Y.; Ma, S.C.; Chai, J.J.  
Deposited on : 2024-01-13  
Resolution : 2.84 Å (reported)

This is a Full wwPDB EM Validation Report for a publicly released PDB entry.

We welcome your comments at [validation@mail.wwpdb.org](mailto:validation@mail.wwpdb.org)

A user guide is available at

<https://www.wwpdb.org/validation/2017/EMValidationReportHelp>

with specific help available everywhere you see the ⓘ symbol.

The types of validation reports are described at

<http://www.wwpdb.org/validation/2017/FAQs#types>.

---

The following versions of software and data (see [references ⓘ](#)) were used in the production of this report:

EMDB validation analysis : **FAILED**  
Mogul : 1.8.5 (274361), CSD as541be (2020)  
MolProbity : 4.02b-467  
buster-report : 1.1.7 (2018)  
Percentile statistics : 20231227.v01 (using entries in the PDB archive December 27th 2023)  
MapQ : **FAILED**  
Ideal geometry (proteins) : Engh & Huber (2001)  
Ideal geometry (DNA, RNA) : Parkinson et al. (1996)  
Validation Pipeline (wwPDB-VP) : 2.38.2

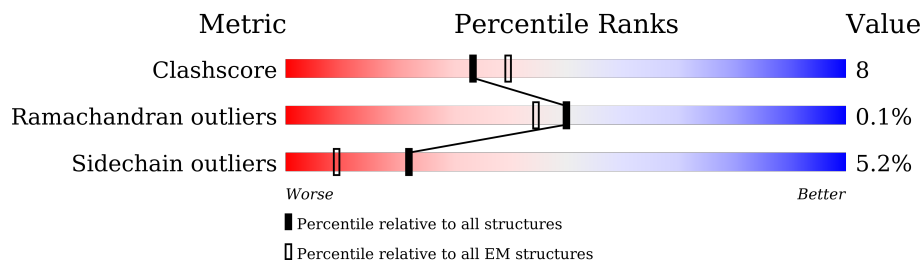
# 1 Overall quality at a glance

The following experimental techniques were used to determine the structure:

*ELECTRON MICROSCOPY*

The reported resolution of this entry is 2.84 Å.

Percentile scores (ranging between 0-100) for global validation metrics of the entry are shown in the following graphic. The table shows the number of entries on which the scores are based.



Metric	Whole archive (#Entries)	EM structures (#Entries)
Clashscore	210492	15764
Ramachandran outliers	207382	16835
Sidechain outliers	206894	16415

The table below summarises the geometric issues observed across the polymeric chains and their fit to the map. The red, orange, yellow and green segments of the bar indicate the fraction of residues that contain outliers for  $\geq 3$ , 2, 1 and 0 types of geometric quality criteria respectively. A grey segment represents the fraction of residues that are not modelled. The numeric value for each fraction is indicated below the corresponding segment, with a dot representing fractions  $\leq 5\%$ .

Mol	Chain	Length	Quality of chain
1	A	752	 79% 20% .
1	G	752	 77% 22% .

## 2 Entry composition [i](#)

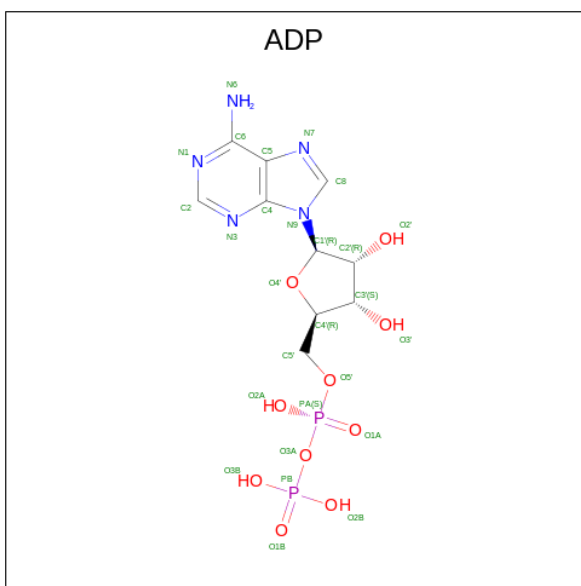
There are 3 unique types of molecules in this entry. The entry contains 12254 atoms, of which 0 are hydrogens and 0 are deuteriums.

In the tables below, the AltConf column contains the number of residues with at least one atom in alternate conformation and the Trace column contains the number of residues modelled with at most 2 atoms.

- Molecule 1 is a protein called NRC2.

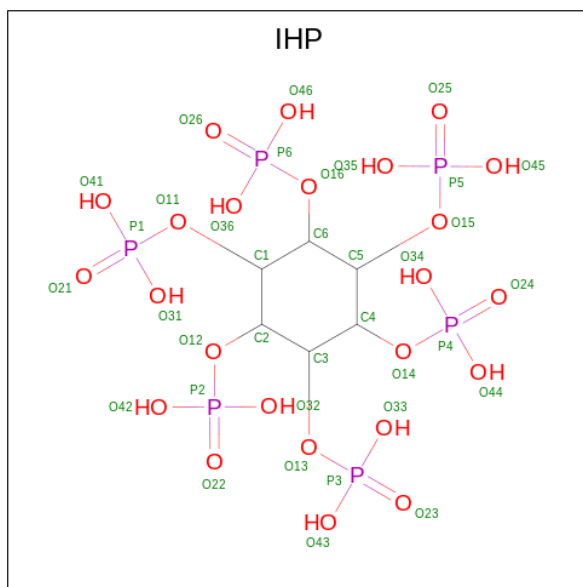
Mol	Chain	Residues	Atoms					AltConf	Trace
			Total	C	N	O	S		
1	A	752	Total	C	N	O	S	0	0
			6064	3878	1046	1111	29		
1	G	752	Total	C	N	O	S	0	0
			6064	3878	1046	1111	29		

- Molecule 2 is ADENOSINE-5'-DIPHOSPHATE (three-letter code: ADP) (formula:  $C_{10}H_{15}N_5O_{10}P_2$ ) (labeled as "Ligand of Interest" by depositor).



Mol	Chain	Residues	Atoms					AltConf
			Total	C	N	O	P	
2	A	1	Total	C	N	O	P	0
			27	10	5	10	2	
2	G	1	Total	C	N	O	P	0
			27	10	5	10	2	

- Molecule 3 is INOSITOL HEXAKISPHOSPHATE (three-letter code: IHP) (formula:  $C_6H_{18}O_{24}P_6$ ) (labeled as "Ligand of Interest" by depositor).

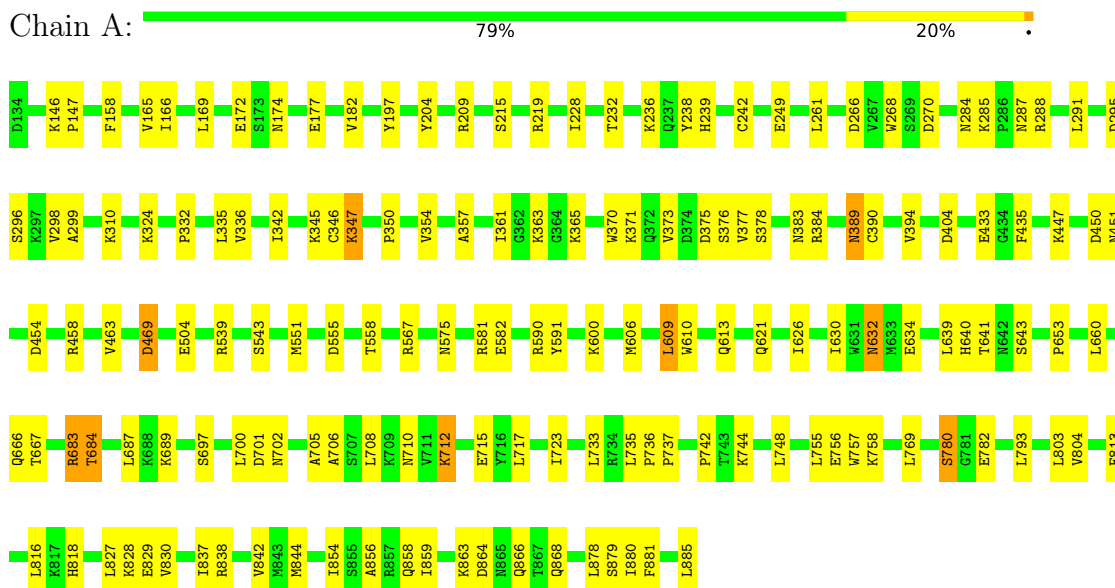


Mol	Chain	Residues	Atoms			AltConf	
			Total	C	O		P
3	A	1	36	6	24	6	0
3	G	1	36	6	24	6	0

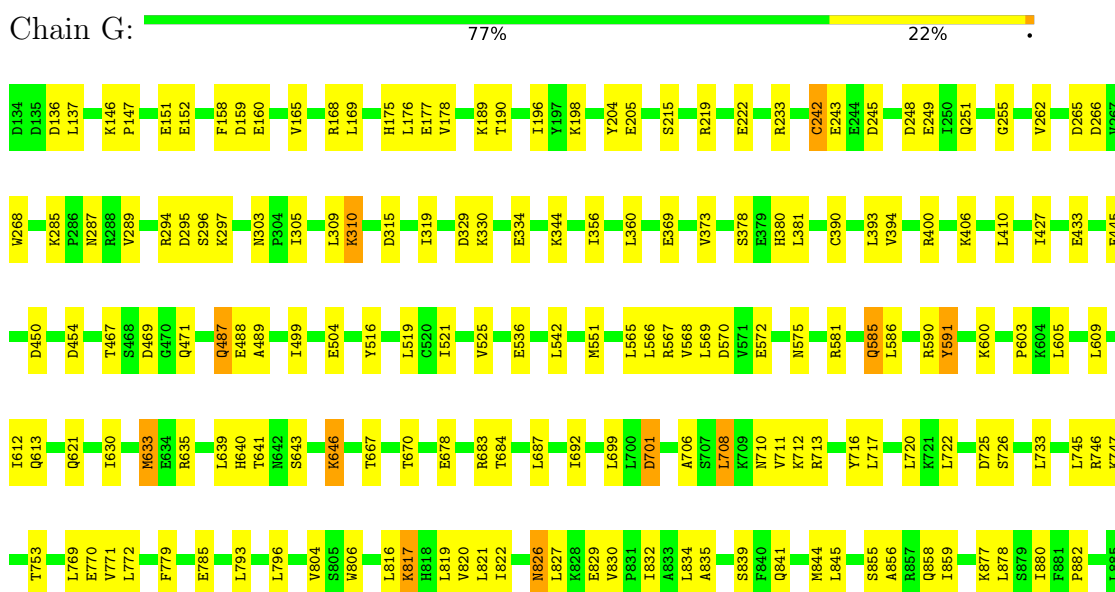
### 3 Residue-property plots [i](#)

These plots are drawn for all protein, RNA, DNA and oligosaccharide chains in the entry. The first graphic for a chain summarises the proportions of the various outlier classes displayed in the second graphic. The second graphic shows the sequence view annotated by issues in geometry. Residues are color-coded to the number of geometric quality criteria for which they contain at least one outlier: green = 0, yellow = 1, orange = 2 and red = 3 or more. Stretches of 2 or more consecutive residues without any outlier are shown as a green connector. Residues present in the sample, but not in the model, are shown in grey.

- Molecule 1: NRC2



- Molecule 1: NRC2



## 4 Experimental information

Property	Value	Source
EM reconstruction method	SINGLE PARTICLE	Depositor
Imposed symmetry	POINT, Not provided	
Number of particles used	560935	Depositor
Resolution determination method	FSC 0.143 CUT-OFF	Depositor
CTF correction method	NONE	Depositor
Microscope	FEI TITAN KRIOS	Depositor
Voltage (kV)	300	Depositor
Electron dose ( $e^-/\text{\AA}^2$ )	50	Depositor
Minimum defocus (nm)	1000	Depositor
Maximum defocus (nm)	2000	Depositor
Magnification	Not provided	
Image detector	GATAN K3 (6k x 4k)	Depositor

## 5 Model quality

### 5.1 Standard geometry

Bond lengths and bond angles in the following residue types are not validated in this section: IHP, ADP

The Z score for a bond length (or angle) is the number of standard deviations the observed value is removed from the expected value. A bond length (or angle) with  $|Z| > 5$  is considered an outlier worth inspection. RMSZ is the root-mean-square of all Z scores of the bond lengths (or angles).

Mol	Chain	Bond lengths		Bond angles	
		RMSZ	# Z  >5	RMSZ	# Z  >5
1	A	0.28	0/6194	0.52	0/8369
1	G	0.27	0/6194	0.52	0/8369
All	All	0.27	0/12388	0.52	0/16738

There are no bond length outliers.

There are no bond angle outliers.

There are no chirality outliers.

There are no planarity outliers.

### 5.2 Too-close contacts

In the following table, the Non-H and H(model) columns list the number of non-hydrogen atoms and hydrogen atoms in the chain respectively. The H(added) column lists the number of hydrogen atoms added and optimized by MolProbity. The Clashes column lists the number of clashes within the asymmetric unit, whereas Symm-Clashes lists symmetry-related clashes.

Mol	Chain	Non-H	H(model)	H(added)	Clashes	Symm-Clashes
1	A	6064	0	6171	96	0
1	G	6064	0	6171	103	0
2	A	27	0	12	0	0
2	G	27	0	12	2	0
3	A	36	0	6	0	0
3	G	36	0	6	1	0
All	All	12254	0	12378	199	0

The all-atom clashscore is defined as the number of clashes found per 1000 atoms (including hydrogen atoms). The all-atom clashscore for this structure is 8.

All (199) close contacts within the same asymmetric unit are listed below, sorted by their clash

magnitude.

Atom-1	Atom-2	Interatomic distance (Å)	Clash overlap (Å)
1:A:712:LYS:O	1:A:712:LYS:NZ	1.97	0.96
1:A:758:LYS:O	1:A:758:LYS:NZ	2.10	0.83
1:A:700:LEU:HD12	1:A:733:LEU:HD22	1.65	0.79
1:G:712:LYS:O	1:G:712:LYS:NZ	2.11	0.79
1:A:653:PRO:HD3	1:A:660:LEU:HD11	1.68	0.76
1:G:504:GLU:N	1:G:504:GLU:OE1	2.18	0.76
1:A:735:LEU:HD11	1:A:755:LEU:HD13	1.69	0.75
1:A:345:LYS:CD	1:A:377:VAL:HG13	2.16	0.75
1:A:350:PRO:O	1:A:354:VAL:HG23	1.87	0.75
1:A:838:ARG:NH2	1:A:866:GLN:OE1	2.22	0.73
1:G:785:GLU:N	1:G:785:GLU:OE1	2.21	0.73
1:G:178:VAL:O	1:G:303:ASN:ND2	2.24	0.71
1:G:329:ASP:OD1	1:G:330:LYS:N	2.26	0.69
1:G:720:LEU:HD21	1:G:722:LEU:HD21	1.74	0.68
1:A:177:GLU:OE1	1:A:177:GLU:N	2.29	0.66
1:A:345:LYS:HD3	1:A:377:VAL:HG13	1.77	0.65
1:G:880:ILE:HG22	1:G:882:PRO:HD2	1.78	0.65
1:A:383:ASN:O	1:A:389:ASN:ND2	2.30	0.65
1:A:660:LEU:HD13	1:A:683:ARG:NH2	2.12	0.64
1:A:804:VAL:O	1:A:827:LEU:HD12	1.99	0.62
1:G:469:ASP:OD2	1:G:746:ARG:NH2	2.31	0.62
1:G:189:LYS:N	2:G:901:ADP:O3B	2.32	0.62
1:G:567:ARG:O	1:G:590:ARG:N	2.33	0.61
1:A:324:LYS:HE3	1:A:354:VAL:HG22	1.82	0.60
1:A:782:GLU:N	1:A:782:GLU:OE1	2.34	0.60
1:G:255:GLY:O	1:G:285:LYS:NZ	2.34	0.59
1:A:706:ALA:O	1:A:710:ASN:ND2	2.34	0.59
1:G:819:LEU:HD21	1:G:821:LEU:HD23	1.84	0.58
1:G:262:VAL:HG22	1:G:289:VAL:HG22	1.86	0.58
1:A:582:GLU:OE1	1:A:582:GLU:N	2.37	0.57
1:A:878:LEU:HD23	1:A:879:SER:N	2.19	0.57
1:G:692:ILE:HD12	1:G:699:LEU:CD1	2.34	0.57
1:A:375:ASP:OD1	1:A:376:SER:N	2.37	0.57
1:G:845:LEU:HD11	1:G:856:ALA:HB2	1.86	0.57
1:G:315:ASP:O	1:G:319:ILE:HD13	2.04	0.57
1:G:639:LEU:HD23	1:G:640:HIS:N	2.20	0.57
1:A:447:LYS:O	1:A:451:ASN:OD1	2.23	0.57
1:G:165:VAL:HG11	1:G:196:ILE:HD13	1.87	0.57
1:G:309:LEU:HD13	1:G:310:LYS:N	2.20	0.56
1:G:804:VAL:HA	1:G:827:LEU:HA	1.88	0.56
1:A:590:ARG:NH2	1:A:613:GLN:OE1	2.37	0.56

*Continued on next page...*



*Continued from previous page...*

Atom-1	Atom-2	Interatomic distance (Å)	Clash overlap (Å)
1:A:757:TRP:CE2	1:A:803:LEU:HD13	2.39	0.56
1:G:835:ALA:HB2	1:G:859:ILE:HG23	1.87	0.56
1:G:585:GLN:OE1	1:G:586:LEU:HD23	2.05	0.56
1:G:305:ILE:O	1:G:305:ILE:HG23	2.06	0.55
1:A:390:CYS:O	1:A:394:VAL:HG23	2.07	0.55
1:A:228:ILE:HD11	1:A:249:GLU:HB2	1.89	0.55
1:A:332:PRO:O	1:A:336:VAL:HG23	2.07	0.55
1:G:262:VAL:CG2	1:G:289:VAL:HG22	2.36	0.55
1:A:818:HIS:ND1	1:A:842:VAL:HG23	2.22	0.54
1:G:369:GLU:O	1:G:373:VAL:HG23	2.07	0.54
1:A:295:ASP:OD1	1:A:296:SER:N	2.40	0.54
1:A:864:ASP:OD1	1:A:868:GLN:NE2	2.41	0.54
1:A:172:GLU:O	1:A:288:ARG:NH2	2.41	0.54
1:A:701:ASP:OD1	1:A:702:ASN:N	2.41	0.53
1:G:334:GLU:N	1:G:334:GLU:OE2	2.41	0.53
1:G:830:VAL:HG23	1:G:859:ILE:HD12	1.90	0.53
1:A:634:GLU:OE1	1:A:634:GLU:N	2.39	0.53
1:A:804:VAL:C	1:A:827:LEU:HD12	2.29	0.53
1:G:242:CYS:SG	1:G:243:GLU:N	2.83	0.52
1:G:136:ASP:OD1	1:G:137:LEU:N	2.42	0.52
1:A:295:ASP:OD2	1:A:298:VAL:HG13	2.10	0.52
1:G:816:LEU:HD23	1:G:817:LYS:N	2.25	0.51
1:A:756:GLU:N	1:A:756:GLU:OE1	2.42	0.51
1:G:830:VAL:HG23	1:G:859:ILE:CD1	2.41	0.51
1:A:345:LYS:CE	1:A:377:VAL:HG13	2.40	0.51
1:A:878:LEU:HD21	1:A:880:ILE:HD11	1.94	0.50
1:A:660:LEU:H	1:A:660:LEU:HD12	1.76	0.50
1:G:433:GLU:HA	1:G:433:GLU:OE2	2.11	0.50
1:A:626:ILE:HG21	1:A:630:ILE:HD11	1.93	0.49
1:G:390:CYS:O	1:G:394:VAL:HG23	2.12	0.49
1:G:708:LEU:HD13	1:G:708:LEU:O	2.13	0.49
1:A:684:THR:HB	1:A:687:LEU:HD13	1.95	0.49
1:A:697:SER:O	1:A:701:ASP:N	2.44	0.49
1:G:684:THR:HB	1:G:687:LEU:HD13	1.95	0.49
1:G:516:TYR:HD2	1:G:519:LEU:HD21	1.78	0.49
1:G:819:LEU:CD2	1:G:821:LEU:HD23	2.43	0.48
1:A:639:LEU:HD23	1:A:640:HIS:N	2.29	0.48
1:A:666:GLN:O	1:A:667:THR:OG1	2.26	0.48
1:A:609:LEU:HD12	1:A:609:LEU:H	1.78	0.48
1:G:471:GLN:N	1:G:471:GLN:OE1	2.46	0.48
1:A:324:LYS:HE3	1:A:354:VAL:HG13	1.95	0.48

*Continued on next page...*

*Continued from previous page...*

Atom-1	Atom-2	Interatomic distance (Å)	Clash overlap (Å)
1:G:806:TRP:CH2	1:G:834:LEU:HD11	2.48	0.48
1:A:804:VAL:HA	1:A:827:LEU:HA	1.95	0.48
1:G:487:GLN:NE2	1:G:488:GLU:OE1	2.47	0.48
1:A:555:ASP:O	1:A:558:THR:OG1	2.23	0.48
1:G:190:THR:N	2:G:901:ADP:O3B	2.42	0.48
1:G:568:VAL:HG12	1:G:591:TYR:HB3	1.96	0.48
1:G:586:LEU:O	1:G:609:LEU:HD23	2.14	0.48
1:G:878:LEU:HD23	1:G:878:LEU:C	2.35	0.47
1:A:708:LEU:O	1:A:708:LEU:HD12	2.14	0.47
1:G:233:ARG:NE	1:G:233:ARG:HA	2.29	0.47
1:A:450:ASP:O	1:A:454:ASP:OD2	2.32	0.47
1:A:748:LEU:HB2	1:A:769:LEU:HD11	1.96	0.47
1:A:701:ASP:O	1:A:705:ALA:N	2.48	0.47
1:G:219:ARG:NE	1:G:222:GLU:OE1	2.48	0.47
1:G:708:LEU:O	1:G:711:VAL:HG12	2.15	0.47
1:G:175:HIS:CE1	1:G:177:GLU:HG2	2.50	0.46
1:G:499:ILE:HD12	1:G:521:ILE:HD11	1.97	0.46
1:A:324:LYS:CE	1:A:354:VAL:HG22	2.45	0.46
1:A:363:LYS:HZ2	1:A:373:VAL:HG12	1.80	0.46
1:G:169:LEU:HD11	1:G:205:GLU:HG2	1.98	0.46
1:G:469:ASP:N	1:G:469:ASP:OD1	2.46	0.46
1:G:667:THR:HA	1:G:687:LEU:HG	1.98	0.46
1:G:450:ASP:O	1:G:454:ASP:OD2	2.33	0.46
1:G:733:LEU:HD12	1:G:753:THR:O	2.14	0.46
1:G:646:LYS:N	1:G:646:LYS:CD	2.78	0.46
1:A:228:ILE:O	1:A:232:THR:HG23	2.16	0.46
1:G:467:THR:OG1	1:G:469:ASP:OD1	2.21	0.46
1:A:197:TYR:O	1:A:209:ARG:NH1	2.49	0.46
1:A:600:LYS:NZ	1:A:621:GLN:OE1	2.49	0.45
1:G:678:GLU:O	1:G:713:ARG:NH2	2.49	0.45
1:A:581:ARG:CZ	1:A:581:ARG:HB2	2.47	0.45
1:G:646:LYS:N	1:G:646:LYS:HD3	2.31	0.45
1:G:356:ILE:HG12	1:G:393:LEU:HD22	1.98	0.45
1:G:820:VAL:O	1:G:821:LEU:HD22	2.17	0.45
1:A:504:GLU:OE1	1:A:504:GLU:C	2.56	0.45
1:G:410:LEU:HD23	1:G:489:ALA:HB2	1.98	0.45
1:G:706:ALA:O	1:G:710:ASN:ND2	2.49	0.44
1:G:725:ASP:OD1	1:G:726:SER:N	2.50	0.44
1:A:755:LEU:O	1:A:780:SER:N	2.44	0.44
1:G:769:LEU:HD21	1:G:772:LEU:HB2	1.98	0.44
1:A:335:LEU:HD11	1:A:365:LYS:HB3	1.99	0.44

*Continued on next page...*

*Continued from previous page...*

Atom-1	Atom-2	Interatomic distance (Å)	Clash overlap (Å)
1:A:830:VAL:CG2	1:A:859:ILE:HD11	2.48	0.44
1:G:406:LYS:O	1:G:410:LEU:HD13	2.18	0.44
1:A:469:ASP:OD1	1:A:469:ASP:N	2.50	0.44
1:A:830:VAL:HG23	1:A:859:ILE:HD11	1.99	0.44
1:G:151:GLU:HG3	1:G:152:GLU:HG3	2.00	0.44
1:A:342:ILE:HA	1:A:345:LYS:HD2	2.00	0.44
1:A:667:THR:HG23	1:A:689:LYS:HG2	1.99	0.44
1:A:856:ALA:HA	1:A:859:ILE:HD12	1.98	0.44
1:G:670:THR:O	1:G:670:THR:HG22	2.17	0.44
1:A:182:VAL:HG21	1:A:299:ALA:CB	2.48	0.44
1:A:723:ILE:N	1:A:723:ILE:HD12	2.32	0.44
1:A:146:LYS:HB3	1:A:147:PRO:HD2	2.00	0.44
1:G:380:HIS:O	1:G:381:LEU:HD22	2.18	0.43
1:G:830:VAL:CG2	1:G:859:ILE:HD12	2.48	0.43
1:G:295:ASP:OD1	1:G:296:SER:N	2.51	0.43
1:A:345:LYS:HE3	1:A:378:SER:HB2	2.01	0.43
1:G:839:SER:O	1:G:841:GLN:NE2	2.51	0.43
1:A:370:TRP:O	1:A:373:VAL:HG22	2.19	0.43
1:G:146:LYS:HB3	1:G:147:PRO:HD2	2.00	0.43
1:A:232:THR:HG21	1:A:238:TYR:CZ	2.54	0.43
1:A:346:CYS:O	1:A:347:LYS:CB	2.67	0.43
1:A:575:ASN:OD1	1:A:575:ASN:C	2.57	0.43
1:A:803:LEU:HD23	1:A:827:LEU:HD13	2.00	0.43
1:G:360:LEU:HD12	1:G:373:VAL:HG21	2.01	0.43
1:A:232:THR:HG21	1:A:238:TYR:CE2	2.54	0.42
1:G:266:ASP:OD1	1:G:268:TRP:NE1	2.52	0.42
1:G:585:GLN:OE1	1:G:585:GLN:C	2.57	0.42
1:A:816:LEU:HD21	1:A:837:ILE:HD12	2.01	0.42
1:G:175:HIS:CE1	1:G:176:LEU:O	2.72	0.42
1:G:845:LEU:HD11	1:G:856:ALA:CB	2.48	0.42
1:G:793:LEU:HD21	1:G:796:LEU:HB2	2.02	0.42
1:A:736:PRO:HB2	1:A:737:PRO:HD2	2.00	0.42
1:G:600:LYS:NZ	1:G:621:GLN:OE1	2.52	0.42
1:G:692:ILE:HD12	1:G:699:LEU:HD11	2.00	0.42
1:A:174:ASN:ND2	1:A:284:ASN:O	2.52	0.42
1:A:539:ARG:O	1:A:567:ARG:N	2.39	0.42
1:G:701:ASP:OD1	1:G:701:ASP:O	2.38	0.42
1:A:632:ASN:OD1	1:A:632:ASN:N	2.51	0.42
1:G:427:ILE:HG21	1:G:445:GLU:OE1	2.20	0.42
1:A:357:ALA:O	1:A:361:ILE:HG23	2.20	0.42
1:G:747:LYS:NZ	3:G:902:IHP:O26	2.49	0.42

*Continued on next page...*

*Continued from previous page...*

Atom-1	Atom-2	Interatomic distance (Å)	Clash overlap (Å)
1:G:821:LEU:C	1:G:822:ILE:HD12	2.40	0.42
1:A:261:LEU:HD12	1:A:288:ARG:O	2.20	0.42
1:A:837:ILE:O	1:A:863:LYS:NZ	2.51	0.42
1:A:838:ARG:NE	1:A:838:ARG:HA	2.35	0.42
1:G:832:ILE:HD12	1:G:832:ILE:HA	1.92	0.42
1:A:433:GLU:HB3	1:A:435:PHE:CE1	2.55	0.41
1:G:248:ASP:O	1:G:251:GLN:HG2	2.20	0.41
1:G:566:LEU:CD2	1:G:569:LEU:HD13	2.50	0.41
1:A:291:LEU:C	1:A:291:LEU:HD12	2.41	0.41
1:G:159:ASP:OD1	1:G:160:GLU:N	2.52	0.41
1:G:575:ASN:OD1	1:G:575:ASN:C	2.58	0.41
1:A:813:PHE:O	1:A:837:ILE:HG21	2.20	0.41
1:A:717:LEU:HD12	1:A:742:PRO:HG3	2.02	0.41
1:G:245:ASP:O	1:G:249:GLU:HG2	2.20	0.41
1:G:770:GLU:HG2	1:G:771:VAL:HG23	2.02	0.41
1:A:454:ASP:O	1:A:458:ARG:HG2	2.21	0.41
1:A:854:ILE:O	1:A:858:GLN:HG3	2.21	0.41
1:A:266:ASP:OD1	1:A:268:TRP:NE1	2.55	0.41
1:G:717:LEU:O	1:G:745:LEU:HD12	2.21	0.41
1:G:830:VAL:HG22	1:G:855:SER:HB2	2.03	0.41
1:A:715:GLU:O	1:A:744:LYS:NZ	2.44	0.40
1:A:769:LEU:HD23	1:A:793:LEU:CD1	2.51	0.40
1:G:536:GLU:O	1:G:565:LEU:HD12	2.21	0.40
1:G:542:LEU:HD23	1:G:570:ASP:HB3	2.03	0.40
1:G:591:TYR:CD1	1:G:591:TYR:C	2.95	0.40
1:G:844:MET:C	1:G:844:MET:SD	2.99	0.40
1:A:165:VAL:O	1:A:169:LEU:HD23	2.21	0.40
1:G:612:ILE:HD11	1:G:633:MET:SD	2.61	0.40
1:A:146:LYS:HB3	1:A:147:PRO:CD	2.52	0.40
1:A:880:ILE:HG21	1:A:885:LEU:HB2	2.04	0.40
1:G:590:ARG:NH2	1:G:613:GLN:OE1	2.41	0.40
1:G:641:THR:HG23	1:G:670:THR:HB	2.04	0.40
1:G:804:VAL:HG12	1:G:826:ASN:HD22	1.87	0.40
1:G:566:LEU:HD21	1:G:569:LEU:HD13	2.03	0.40
1:G:603:PRO:HB2	1:G:605:LEU:HD12	2.04	0.40

There are no symmetry-related clashes.

## 5.3 Torsion angles [i](#)

### 5.3.1 Protein backbone [i](#)

In the following table, the Percentiles column shows the percent Ramachandran outliers of the chain as a percentile score with respect to all PDB entries followed by that with respect to all EM entries.

The Analysed column shows the number of residues for which the backbone conformation was analysed, and the total number of residues.

Mol	Chain	Analysed	Favoured	Allowed	Outliers	Percentiles	
1	A	750/752 (100%)	730 (97%)	19 (2%)	1 (0%)	48	69
1	G	750/752 (100%)	727 (97%)	23 (3%)	0	100	100
All	All	1500/1504 (100%)	1457 (97%)	42 (3%)	1 (0%)	50	69

All (1) Ramachandran outliers are listed below:

Mol	Chain	Res	Type
1	A	347	LYS

### 5.3.2 Protein sidechains [i](#)

In the following table, the Percentiles column shows the percent sidechain outliers of the chain as a percentile score with respect to all PDB entries followed by that with respect to all EM entries.

The Analysed column shows the number of residues for which the sidechain conformation was analysed, and the total number of residues.

Mol	Chain	Analysed	Rotameric	Outliers	Percentiles	
1	A	682/682 (100%)	647 (95%)	35 (5%)	20	40
1	G	682/682 (100%)	646 (95%)	36 (5%)	19	38
All	All	1364/1364 (100%)	1293 (95%)	71 (5%)	22	39

All (71) residues with a non-rotameric sidechain are listed below:

Mol	Chain	Res	Type
1	A	158	PHE
1	A	166	ILE
1	A	204	TYR
1	A	215	SER
1	A	219	ARG

*Continued on next page...*

*Continued from previous page...*

<b>Mol</b>	<b>Chain</b>	<b>Res</b>	<b>Type</b>
1	A	236	LYS
1	A	239	HIS
1	A	242	CYS
1	A	270	ASP
1	A	285	LYS
1	A	287	ASN
1	A	310	LYS
1	A	371	LYS
1	A	384	ARG
1	A	389	ASN
1	A	404	ASP
1	A	463	VAL
1	A	469	ASP
1	A	543	SER
1	A	551	MET
1	A	591	TYR
1	A	606	MET
1	A	609	LEU
1	A	610	TRP
1	A	632	ASN
1	A	641	THR
1	A	643	SER
1	A	683	ARG
1	A	684	THR
1	A	712	LYS
1	A	780	SER
1	A	828	LYS
1	A	829	GLU
1	A	844	MET
1	A	881	PHE
1	G	158	PHE
1	G	168	ARG
1	G	198	LYS
1	G	204	TYR
1	G	215	SER
1	G	242	CYS
1	G	265	ASP
1	G	287	ASN
1	G	294	ARG
1	G	297	LYS
1	G	310	LYS
1	G	344	LYS

*Continued on next page...*

*Continued from previous page...*

Mol	Chain	Res	Type
1	G	378	SER
1	G	400	ARG
1	G	487	GLN
1	G	525	VAL
1	G	551	MET
1	G	572	GLU
1	G	581	ARG
1	G	585	GLN
1	G	591	TYR
1	G	630	ILE
1	G	633	MET
1	G	635	ARG
1	G	643	SER
1	G	646	LYS
1	G	683	ARG
1	G	701	ASP
1	G	708	LEU
1	G	716	TYR
1	G	779	PHE
1	G	817	LYS
1	G	826	ASN
1	G	829	GLU
1	G	858	GLN
1	G	877	LYS

Sometimes sidechains can be flipped to improve hydrogen bonding and reduce clashes. All (6) such sidechains are listed below:

Mol	Chain	Res	Type
1	A	174	ASN
1	A	710	ASN
1	G	175	HIS
1	G	537	HIS
1	G	710	ASN
1	G	826	ASN

### 5.3.3 RNA [i](#)

There are no RNA molecules in this entry.

## 5.4 Non-standard residues in protein, DNA, RNA chains [i](#)

There are no non-standard protein/DNA/RNA residues in this entry.

## 5.5 Carbohydrates [i](#)

There are no oligosaccharides in this entry.

## 5.6 Ligand geometry [i](#)

4 ligands are modelled in this entry.

In the following table, the Counts columns list the number of bonds (or angles) for which Mogul statistics could be retrieved, the number of bonds (or angles) that are observed in the model and the number of bonds (or angles) that are defined in the Chemical Component Dictionary. The Link column lists molecule types, if any, to which the group is linked. The Z score for a bond length (or angle) is the number of standard deviations the observed value is removed from the expected value. A bond length (or angle) with  $|Z| > 2$  is considered an outlier worth inspection. RMSZ is the root-mean-square of all Z scores of the bond lengths (or angles).

Mol	Type	Chain	Res	Link	Bond lengths			Bond angles		
					Counts	RMSZ	# Z  > 2	Counts	RMSZ	# Z  > 2
3	IHP	A	902	-	36,36,36	1.49	6 (16%)	54,60,60	0.68	1 (1%)
2	ADP	G	901	-	24,29,29	0.91	1 (4%)	29,45,45	1.41	5 (17%)
3	IHP	G	902	-	36,36,36	1.47	6 (16%)	54,60,60	0.85	3 (5%)
2	ADP	A	901	-	24,29,29	0.93	1 (4%)	29,45,45	1.47	4 (13%)

In the following table, the Chirals column lists the number of chiral outliers, the number of chiral centers analysed, the number of these observed in the model and the number defined in the Chemical Component Dictionary. Similar counts are reported in the Torsion and Rings columns. '-' means no outliers of that kind were identified.

Mol	Type	Chain	Res	Link	Chirals	Torsions	Rings
3	IHP	A	902	-	-	7/30/54/54	0/1/1/1
2	ADP	G	901	-	-	7/12/32/32	0/3/3/3
3	IHP	G	902	-	-	9/30/54/54	0/1/1/1
2	ADP	A	901	-	-	3/12/32/32	0/3/3/3

All (14) bond length outliers are listed below:

Mol	Chain	Res	Type	Atoms	Z	Observed(Å)	Ideal(Å)
3	A	902	IHP	P4-O14	3.29	1.65	1.59

*Continued on next page...*



Continued from previous page...

Mol	Chain	Res	Type	Atoms	Z	Observed(Å)	Ideal(Å)
3	G	902	IHP	P1-O11	3.24	1.65	1.59
3	A	902	IHP	P5-O15	3.23	1.65	1.59
3	A	902	IHP	P3-O13	3.19	1.65	1.59
3	A	902	IHP	P6-O16	3.15	1.65	1.59
3	A	902	IHP	P1-O11	3.14	1.65	1.59
3	G	902	IHP	P2-O12	3.11	1.65	1.59
3	G	902	IHP	P3-O13	3.09	1.65	1.59
3	G	902	IHP	P6-O16	3.08	1.65	1.59
3	G	902	IHP	P4-O14	3.06	1.65	1.59
3	A	902	IHP	P2-O12	3.05	1.65	1.59
3	G	902	IHP	P5-O15	3.04	1.65	1.59
2	G	901	ADP	C5-C4	2.34	1.47	1.40
2	A	901	ADP	C5-C4	2.22	1.46	1.40

All (13) bond angle outliers are listed below:

Mol	Chain	Res	Type	Atoms	Z	Observed(°)	Ideal(°)
2	A	901	ADP	N3-C2-N1	-3.74	122.83	128.68
2	A	901	ADP	PA-O3A-PB	-3.58	120.56	132.83
2	G	901	ADP	N3-C2-N1	-3.48	123.24	128.68
3	G	902	IHP	C5-C4-C3	3.47	118.00	110.41
2	G	901	ADP	PA-O3A-PB	-3.46	120.94	132.83
2	A	901	ADP	C3'-C2'-C1'	2.68	105.01	100.98
3	G	902	IHP	C4-C3-C2	2.64	116.19	110.41
2	G	901	ADP	C4-C5-N7	-2.53	106.76	109.40
2	A	901	ADP	C4-C5-N7	-2.51	106.78	109.40
3	G	902	IHP	C6-C5-C4	2.51	115.90	110.41
2	G	901	ADP	C3'-C2'-C1'	2.47	104.69	100.98
3	A	902	IHP	C3-C2-C1	2.13	115.07	110.41
2	G	901	ADP	C2-N1-C6	2.05	122.27	118.75

There are no chirality outliers.

All (26) torsion outliers are listed below:

Mol	Chain	Res	Type	Atoms
2	A	901	ADP	C5'-O5'-PA-O1A
2	A	901	ADP	C5'-O5'-PA-O2A
2	G	901	ADP	C5'-O5'-PA-O3A
2	G	901	ADP	O4'-C4'-C5'-O5'
2	G	901	ADP	C3'-C4'-C5'-O5'
3	A	902	IHP	C4-C3-O13-P3
3	G	902	IHP	C1-C2-O12-P2

Continued on next page...

*Continued from previous page...*

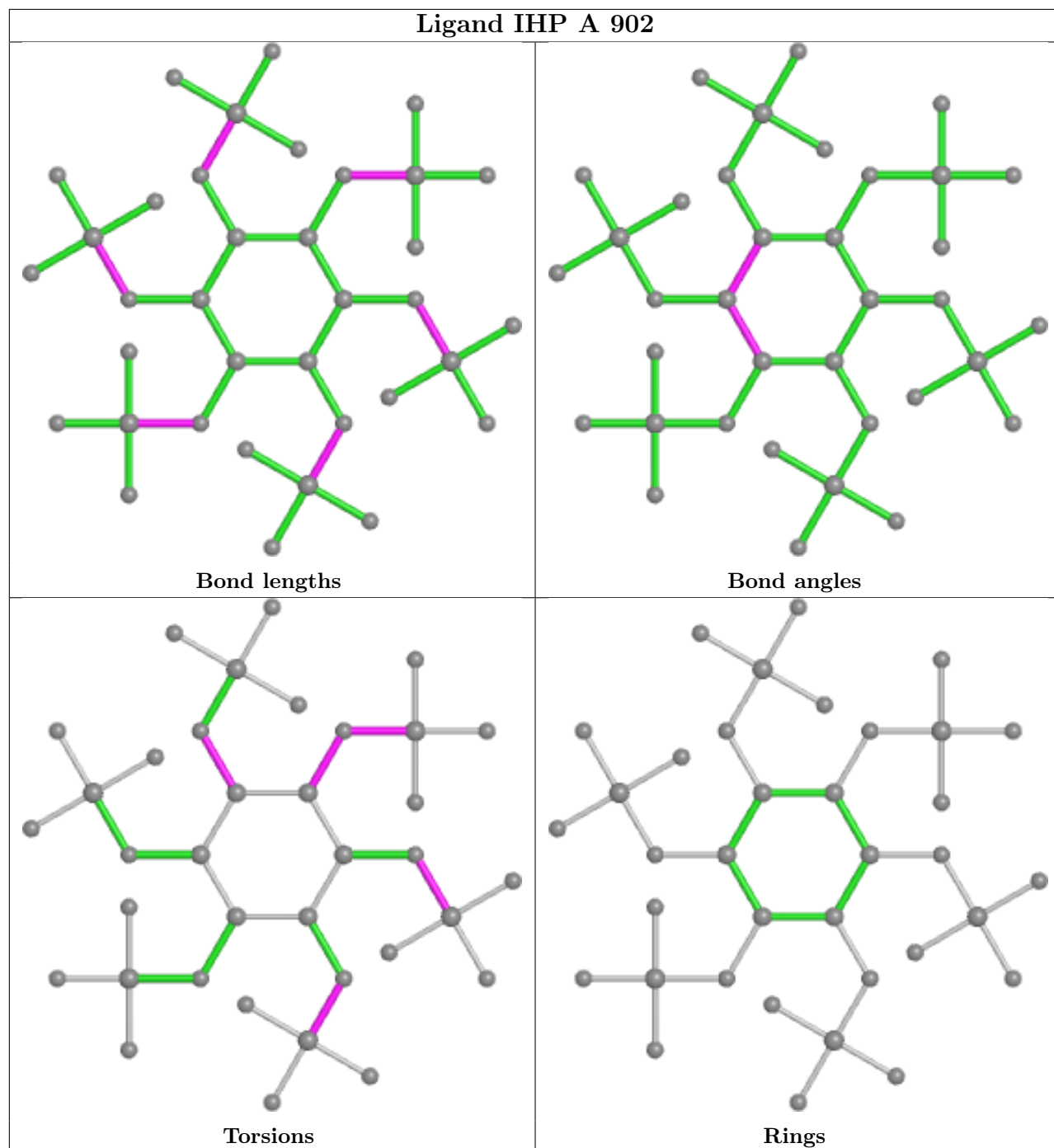
Mol	Chain	Res	Type	Atoms
3	G	902	IHP	C3-C2-O12-P2
3	G	902	IHP	C1-O11-P1-O31
3	G	902	IHP	C5-O15-P5-O25
3	G	902	IHP	C3-O13-P3-O23
3	A	902	IHP	C5-O15-P5-O35
3	A	902	IHP	C5-O15-P5-O45
3	A	902	IHP	C6-O16-P6-O36
3	G	902	IHP	C2-C3-O13-P3
2	G	901	ADP	PB-O3A-PA-O2A
2	G	901	ADP	C4'-C5'-O5'-PA
2	G	901	ADP	C5'-O5'-PA-O1A
3	A	902	IHP	C5-C4-O14-P4
2	G	901	ADP	PB-O3A-PA-O1A
3	G	902	IHP	C2-O12-P2-O22
2	A	901	ADP	C5'-O5'-PA-O3A
3	A	902	IHP	C3-C4-O14-P4
3	A	902	IHP	C4-O14-P4-O34
3	G	902	IHP	C2-O12-P2-O32
3	G	902	IHP	C4-O14-P4-O34

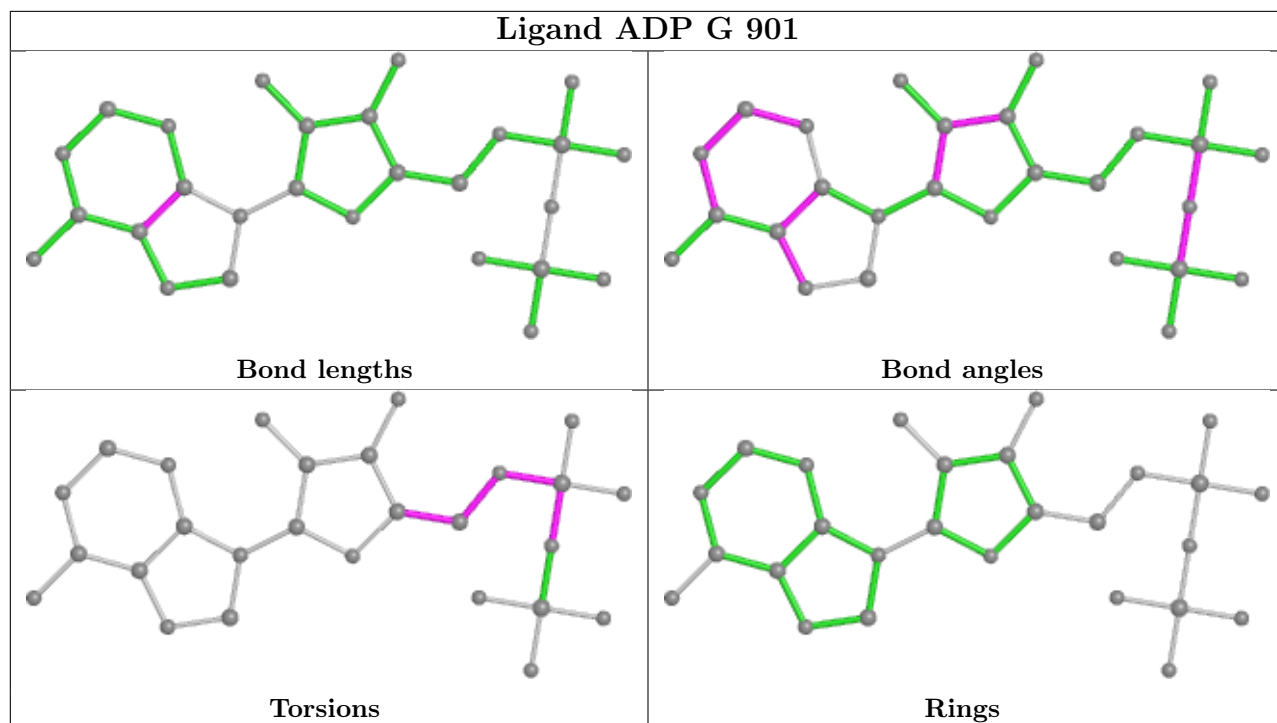
There are no ring outliers.

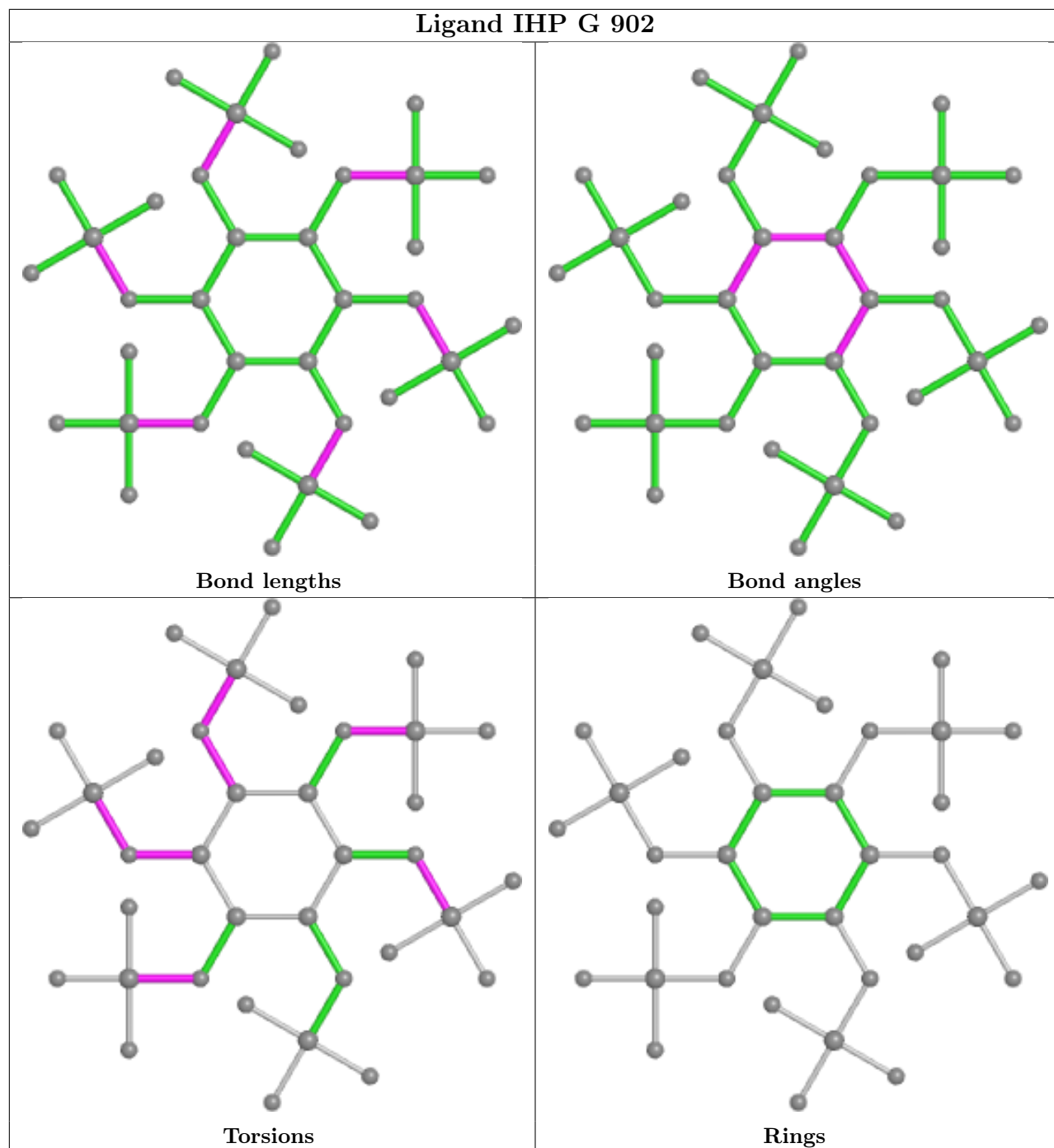
2 monomers are involved in 3 short contacts:

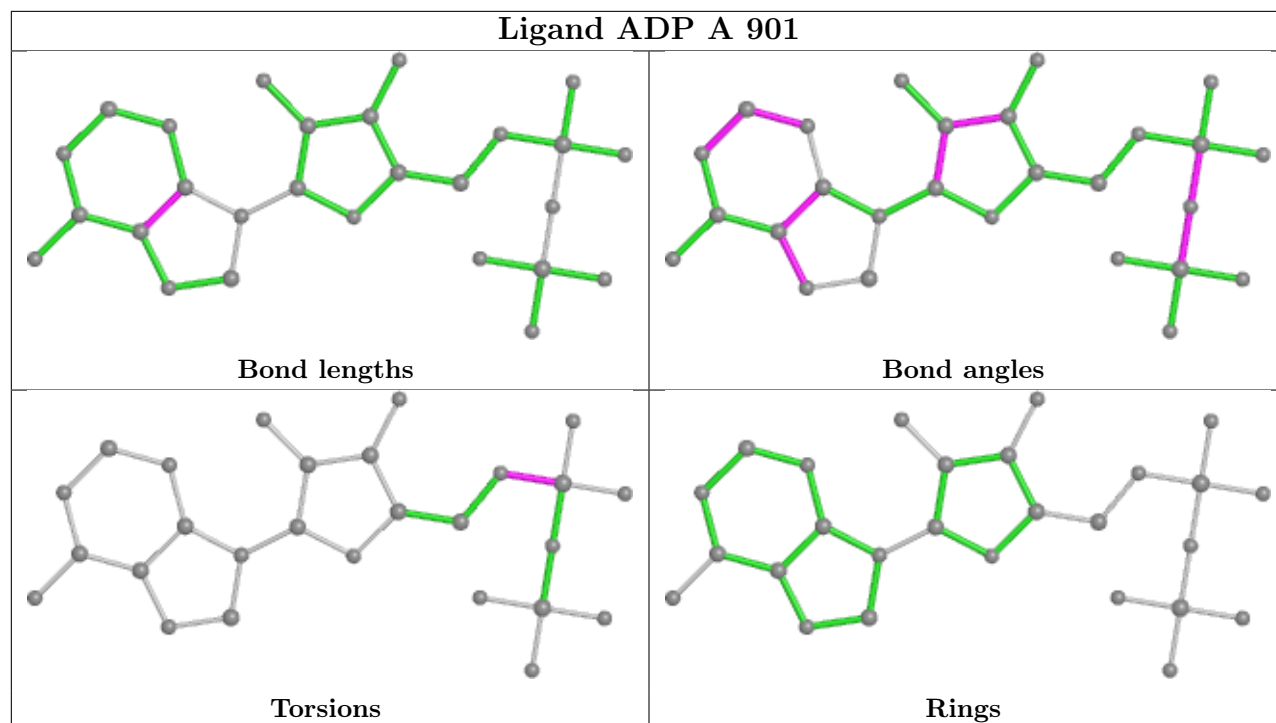
Mol	Chain	Res	Type	Clashes	Symm-Clashes
2	G	901	ADP	2	0
3	G	902	IHP	1	0

The following is a two-dimensional graphical depiction of Mogul quality analysis of bond lengths, bond angles, torsion angles, and ring geometry for all instances of the Ligand of Interest. In addition, ligands with molecular weight > 250 and outliers as shown on the validation Tables will also be included. For torsion angles, if less than 5% of the Mogul distribution of torsion angles is within 10 degrees of the torsion angle in question, then that torsion angle is considered an outlier. Any bond that is central to one or more torsion angles identified as an outlier by Mogul will be highlighted in the graph. For rings, the root-mean-square deviation (RMSD) between the ring in question and similar rings identified by Mogul is calculated over all ring torsion angles. If the average RMSD is greater than 60 degrees and the minimal RMSD between the ring in question and any Mogul-identified rings is also greater than 60 degrees, then that ring is considered an outlier. The outliers are highlighted in purple. The color gray indicates Mogul did not find sufficient equivalents in the CSD to analyse the geometry.









## 5.7 Other polymers [i](#)

There are no such residues in this entry.

## 5.8 Polymer linkage issues [i](#)

There are no chain breaks in this entry.