



# Full wwPDB X-ray Structure Validation Report ⓘ

May 17, 2020 – 05:27 am BST

PDB ID : 4XNJ  
Title : X-ray structure of PepTst2  
Authors : Huang, C.Y.; Olieric, V.; Diederichs, K.; Wang, M.; Caffrey, M.  
Deposited on : 2015-01-15  
Resolution : 2.30 Å(reported)

This is a Full wwPDB X-ray Structure Validation Report for a publicly released PDB entry.

We welcome your comments at [validation@mail.wwpdb.org](mailto:validation@mail.wwpdb.org)

A user guide is available at

<https://www.wwpdb.org/validation/2017/XrayValidationReportHelp>

with specific help available everywhere you see the ⓘ symbol.

---

The following versions of software and data (see [references ⓘ](#)) were used in the production of this report:

MolProbity : 4.02b-467  
Mogul : 1.8.5 (274361), CSD as541be (2020)  
Xtriage (Phenix) : 1.13  
EDS : 2.11  
buster-report : 1.1.7 (2018)  
Percentile statistics : 20191225.v01 (using entries in the PDB archive December 25th 2019)  
Refmac : 5.8.0158  
CCP4 : 7.0.044 (Gargrove)  
Ideal geometry (proteins) : Engh & Huber (2001)  
Ideal geometry (DNA, RNA) : Parkinson et al. (1996)  
Validation Pipeline (wwPDB-VP) : 2.11

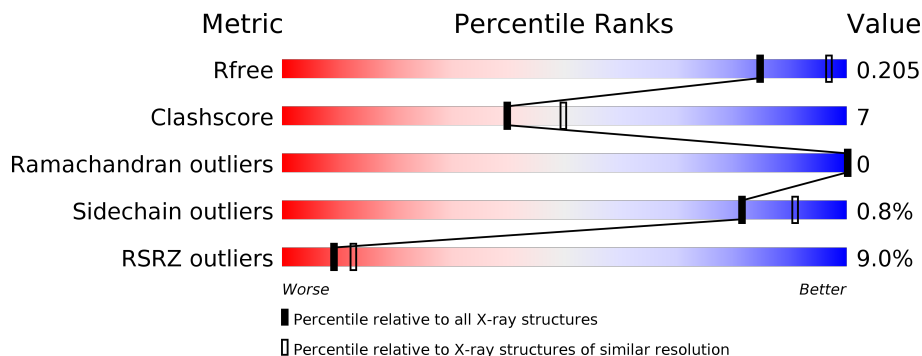
# 1 Overall quality at a glance

The following experimental techniques were used to determine the structure:

*X-RAY DIFFRACTION*

The reported resolution of this entry is 2.30 Å.

Percentile scores (ranging between 0-100) for global validation metrics of the entry are shown in the following graphic. The table shows the number of entries on which the scores are based.



Metric	Whole archive (#Entries)	Similar resolution (#Entries, resolution range(Å))
$R_{free}$	130704	5042 (2.30-2.30)
Clashscore	141614	5643 (2.30-2.30)
Ramachandran outliers	138981	5575 (2.30-2.30)
Sidechain outliers	138945	5575 (2.30-2.30)
RSRZ outliers	127900	4938 (2.30-2.30)

The table below summarises the geometric issues observed across the polymeric chains and their fit to the electron density. The red, orange, yellow and green segments on the lower bar indicate the fraction of residues that contain outliers for  $\geq 3$ , 2, 1 and 0 types of geometric quality criteria respectively. A grey segment represents the fraction of residues that are not modelled. The numeric value for each fraction is indicated below the corresponding segment, with a dot representing fractions  $\leq 5\%$ . The upper red bar (where present) indicates the fraction of residues that have poor fit to the electron density. The numeric value is given above the bar.

Mol	Chain	Length	Quality of chain
1	A	483	

The following table lists non-polymeric compounds, carbohydrate monomers and non-standard residues in protein, DNA, RNA chains that are outliers for geometric or electron-density-fit criteria:

Mol	Type	Chain	Res	Chirality	Geometry	Clashes	Electron density
2	78M	A	510	-	-	-	X

## 2 Entry composition [i](#)

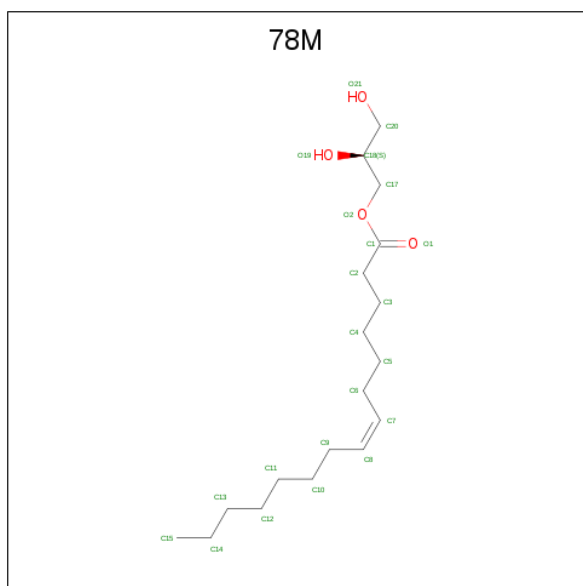
There are 4 unique types of molecules in this entry. The entry contains 3957 atoms, of which 0 are hydrogens and 0 are deuteriums.

In the tables below, the ZeroOcc column contains the number of atoms modelled with zero occupancy, the AltConf column contains the number of residues with at least one atom in alternate conformation and the Trace column contains the number of residues modelled with at most 2 atoms.

- Molecule 1 is a protein called Di-or tripeptide:H<sup>+</sup> symporter.

Mol	Chain	Residues	Atoms					ZeroOcc	AltConf	Trace
			Total	C	N	O	S			
1	A	466	3613	2427	559	610	17	0	2	0

- Molecule 2 is (2S)-2,3-DIHYDROXYPROPYL(7Z)-PENTADEC-7-ENOATE (three-letter code: 78M) (formula: C<sub>18</sub>H<sub>34</sub>O<sub>4</sub>).



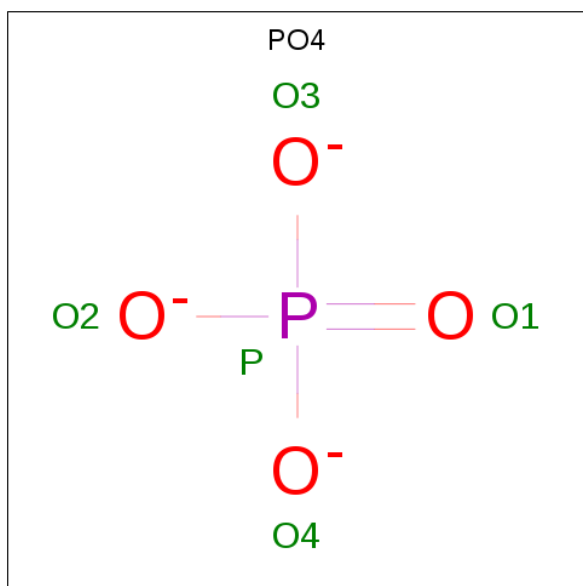
Mol	Chain	Residues	Atoms			ZeroOcc	AltConf
			Total	C	O		
2	A	1	22	18	4	0	0
2	A	1	22	18	4	0	0
2	A	1	22	18	4	0	0
2	A	1	22	18	4	0	0
2	A	1	22	18	4	0	0

*Continued on next page...*

Continued from previous page...

Mol	Chain	Residues	Atoms			ZeroOcc	AltConf
2	A	1	Total	C	O	0	0
			22	18	4		
2	A	1	Total	C	O	0	0
			22	18	4		
2	A	1	Total	C	O	0	0
			22	18	4		
2	A	1	Total	C	O	0	0
			22	18	4		
2	A	1	Total	C	O	0	0
			22	18	4		
2	A	1	Total	C	O	0	0
			22	18	4		
2	A	1	Total	C	O	0	0
			22	18	4		

- Molecule 3 is PHOSPHATE ION (three-letter code: PO4) (formula: O<sub>4</sub>P).



Mol	Chain	Residues	Atoms			ZeroOcc	AltConf
3	A	1	Total	O	P	0	0
			5	4	1		

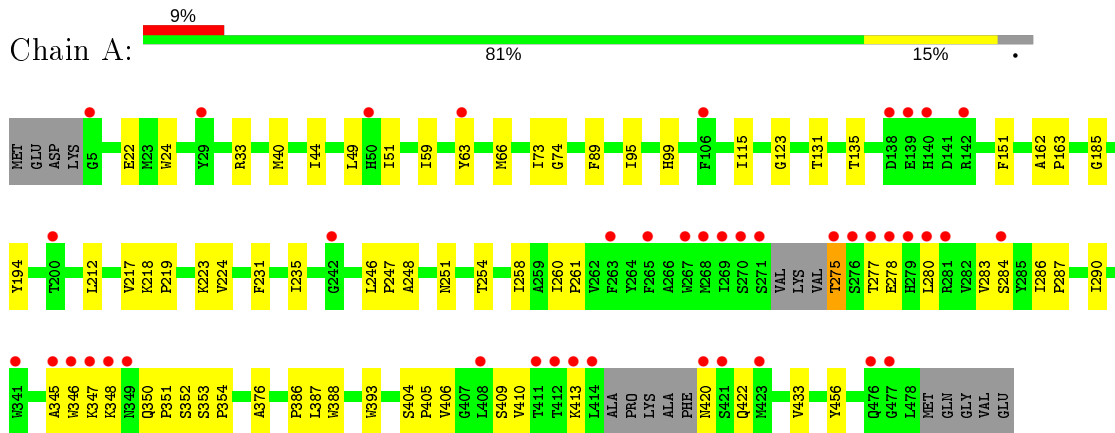
- Molecule 4 is water.

<b>Mol</b>	<b>Chain</b>	<b>Residues</b>	<b>Atoms</b>		<b>ZeroOcc</b>	<b>AltConf</b>
4	A	53	Total 53	O 53	0	0

### 3 Residue-property plots [i](#)

These plots are drawn for all protein, RNA and DNA chains in the entry. The first graphic for a chain summarises the proportions of the various outlier classes displayed in the second graphic. The second graphic shows the sequence view annotated by issues in geometry and electron density. Residues are color-coded according to the number of geometric quality criteria for which they contain at least one outlier: green = 0, yellow = 1, orange = 2 and red = 3 or more. A red dot above a residue indicates a poor fit to the electron density ( $RSRZ > 2$ ). Stretches of 2 or more consecutive residues without any outlier are shown as a green connector. Residues present in the sample, but not in the model, are shown in grey.

- Molecule 1: Di- or tripeptide:H<sup>+</sup> symporter



## 4 Data and refinement statistics

Property	Value	Source
Space group	C 2 2 21	Depositor
Cell constants a, b, c, $\alpha$ , $\beta$ , $\gamma$	102.88Å 110.16Å 110.96Å 90.00° 90.00° 90.00°	Depositor
Resolution (Å)	49.34 – 2.30 49.34 – 2.30	Depositor EDS
% Data completeness (in resolution range)	99.5 (49.34-2.30) 91.3 (49.34-2.30)	Depositor EDS
$R_{merge}$	(Not available)	Depositor
$R_{sym}$	(Not available)	Depositor
$\langle I/\sigma(I) \rangle$ <sup>1</sup>	0.63 (at 2.29Å)	Xtrriage
Refinement program	PHENIX (phenix.refine: 1.9_1692)	Depositor
R, $R_{free}$	0.203 , 0.251 0.210 , 0.205	Depositor DCC
$R_{free}$ test set	1388 reflections (4.92%)	wwPDB-VP
Wilson B-factor (Å <sup>2</sup> )	39.1	Xtrriage
Anisotropy	0.411	Xtrriage
Bulk solvent $k_{sol}$ (e/Å <sup>3</sup> ), $B_{sol}$ (Å <sup>2</sup> )	0.33 , 49.6	EDS
L-test for twinning <sup>2</sup>	$\langle  L  \rangle = 0.48$ , $\langle L^2 \rangle = 0.31$	Xtrriage
Estimated twinning fraction	No twinning to report.	Xtrriage
$F_o, F_c$ correlation	0.94	EDS
Total number of atoms	3957	wwPDB-VP
Average B, all atoms (Å <sup>2</sup> )	54.0	wwPDB-VP

Xtrriage's analysis on translational NCS is as follows: *The largest off-origin peak in the Patterson function is 5.74% of the height of the origin peak. No significant pseudotranslation is detected.*

<sup>1</sup>Intensities estimated from amplitudes.

<sup>2</sup>Theoretical values of  $\langle |L| \rangle$ ,  $\langle L^2 \rangle$  for acentric reflections are 0.5, 0.333 respectively for untwinned datasets, and 0.375, 0.2 for perfectly twinned datasets.

## 5 Model quality [i](#)

### 5.1 Standard geometry [i](#)

Bond lengths and bond angles in the following residue types are not validated in this section: 78M, PO4

The Z score for a bond length (or angle) is the number of standard deviations the observed value is removed from the expected value. A bond length (or angle) with  $|Z| > 5$  is considered an outlier worth inspection. RMSZ is the root-mean-square of all Z scores of the bond lengths (or angles).

Mol	Chain	Bond lengths		Bond angles	
		RMSZ	# Z  >5	RMSZ	# Z  >5
1	A	0.40	0/3725	0.53	0/5078

There are no bond length outliers.

There are no bond angle outliers.

There are no chirality outliers.

There are no planarity outliers.

### 5.2 Too-close contacts [i](#)

In the following table, the Non-H and H(model) columns list the number of non-hydrogen atoms and hydrogen atoms in the chain respectively. The H(added) column lists the number of hydrogen atoms added and optimized by MolProbity. The Clashes column lists the number of clashes within the asymmetric unit, whereas Symm-Clashes lists symmetry related clashes.

Mol	Chain	Non-H	H(model)	H(added)	Clashes	Symm-Clashes
1	A	3613	0	3701	54	0
2	A	286	0	442	19	0
3	A	5	0	0	0	0
4	A	53	0	0	0	0
All	All	3957	0	4143	59	0

The all-atom clashscore is defined as the number of clashes found per 1000 atoms (including hydrogen atoms). The all-atom clashscore for this structure is 7.

All (59) close contacts within the same asymmetric unit are listed below, sorted by their clash magnitude.



Atom-1	Atom-2	Interatomic distance (Å)	Clash overlap (Å)
1:A:275:THR:HA	1:A:278:GLU:HG3	1.68	0.75
1:A:352:SER:HB2	1:A:354:PRO:HD2	1.79	0.64
1:A:353:SER:HB3	1:A:410:VAL:HG22	1.79	0.64
1:A:406:VAL:O	1:A:410:VAL:HG23	2.01	0.60
1:A:345:ALA:O	1:A:348:LYS:NZ	2.32	0.60
1:A:420:ASN:N	1:A:422:GLN:OE1	2.35	0.60
1:A:247:PRO:O	1:A:251:ASN:ND2	2.33	0.59
1:A:386:PRO:HB2	2:A:509:78M:H41C	1.84	0.58
1:A:63:TYR:CD1	1:A:115:ILE:HG23	2.40	0.56
2:A:503:78M:H141	2:A:511:78M:H92C	1.88	0.54
1:A:248:ALA:HA	2:A:501:78M:H172	1.90	0.54
1:A:212:LEU:HD12	2:A:504:78M:H22C	1.89	0.54
1:A:284:SER:O	1:A:287:PRO:HD2	2.08	0.53
1:A:280:LEU:O	1:A:283:VAL:HG12	2.11	0.51
1:A:63:TYR:CE1	1:A:115:ILE:HG12	2.47	0.50
1:A:286:ILE:O	1:A:290:ILE:HG12	2.11	0.50
1:A:224:VAL:HG21	2:A:504:78M:H8	1.94	0.50
1:A:49:LEU:HG	1:A:51:ILE:HG12	1.93	0.50
1:A:194:TYR:HE1	2:A:512:78M:H22C	1.76	0.50
1:A:131:THR:O	1:A:135:THR:HG23	2.12	0.50
2:A:502:78M:H101	2:A:510:78M:H7	1.93	0.50
1:A:194:TYR:CE1	2:A:512:78M:H22C	2.47	0.49
1:A:59:ILE:HD11	1:A:246:LEU:HD21	1.94	0.49
2:A:502:78M:H8	2:A:510:78M:H42C	1.94	0.49
1:A:73:ILE:HG23	2:A:504:78M:H153	1.94	0.49
1:A:348:LYS:HD3	1:A:348:LYS:N	2.28	0.48
1:A:63:TYR:CE1	1:A:115:ILE:HG23	2.48	0.48
1:A:74:GLY:HA3	1:A:123:GLY:O	2.14	0.48
1:A:258:ILE:O	1:A:261:PRO:HD2	2.13	0.48
1:A:95:ILE:O	1:A:99:HIS:HD2	1.98	0.47
1:A:218:LYS:HB3	1:A:219:PRO:HD3	1.96	0.46
1:A:33:ARG:HH21	1:A:63:TYR:HD2	1.64	0.45
1:A:409:SER:O	1:A:413:LYS:HG3	2.17	0.45
1:A:162:ALA:HB3	1:A:163:PRO:HD3	1.99	0.45
1:A:89:PHE:CE2	2:A:512:78M:H32C	2.51	0.45
1:A:246:LEU:HB3	1:A:247:PRO:HD3	2.00	0.43
2:A:502:78M:C8	2:A:510:78M:H42C	2.48	0.43
1:A:260:ILE:HB	1:A:261:PRO:HD3	2.00	0.43
1:A:254:THR:O	1:A:258:ILE:HG12	2.18	0.43
1:A:24:TRP:HB3	1:A:185:GLY:O	2.19	0.43
1:A:22:GLU:HG3	1:A:151:PHE:CZ	2.53	0.43
1:A:223:LYS:HB2	1:A:223:LYS:HE3	1.79	0.42

*Continued on next page...*

Continued from previous page...

Atom-1	Atom-2	Interatomic distance (Å)	Clash overlap (Å)
1:A:353:SER:HB3	1:A:410:VAL:CG2	2.49	0.42
1:A:66:MET:SD	2:A:513:78M:H111	2.59	0.42
1:A:347:LYS:HA	1:A:347:LYS:HD2	1.84	0.42
1:A:422:GLN:CD	1:A:422:GLN:H	2.22	0.42
1:A:261:PRO:HG2	1:A:433:VAL:HG21	2.01	0.42
1:A:347:LYS:O	1:A:347:LYS:HE3	2.19	0.42
1:A:388:TRP:CE3	2:A:506:78M:H21C	2.55	0.42
1:A:231:PHE:CE2	1:A:235:ILE:HD11	2.54	0.41
1:A:376:ALA:HB1	2:A:502:78M:H21C	2.02	0.41
1:A:40:MET:O	1:A:44:ILE:HG13	2.20	0.41
2:A:512:78M:H61C	2:A:512:78M:H31C	1.70	0.41
1:A:350:GLN:HG3	1:A:351:PRO:HD2	2.02	0.41
1:A:456:TYR:CE2	2:A:507:78M:H32C	2.56	0.41
1:A:217:VAL:HG21	2:A:504:78M:H171	2.03	0.41
1:A:404:SER:OG	1:A:405:PRO:HD3	2.21	0.40
1:A:346:TRP:CZ2	1:A:351:PRO:HD3	2.57	0.40
1:A:387:LEU:HD12	2:A:506:78M:H202	2.03	0.40

There are no symmetry-related clashes.

## 5.3 Torsion angles [i](#)

### 5.3.1 Protein backbone [i](#)

In the following table, the Percentiles column shows the percent Ramachandran outliers of the chain as a percentile score with respect to all X-ray entries followed by that with respect to entries of similar resolution.

The Analysed column shows the number of residues for which the backbone conformation was analysed, and the total number of residues.

Mol	Chain	Analysed	Favoured	Allowed	Outliers	Percentiles
1	A	462/483 (96%)	455 (98%)	7 (2%)	0	100 100

There are no Ramachandran outliers to report.

### 5.3.2 Protein sidechains [i](#)

In the following table, the Percentiles column shows the percent sidechain outliers of the chain as a percentile score with respect to all X-ray entries followed by that with respect to entries of similar resolution.

The Analysed column shows the number of residues for which the sidechain conformation was analysed, and the total number of residues.

Mol	Chain	Analysed	Rotameric	Outliers	Percentiles
1	A	379/391 (97%)	376 (99%)	3 (1%)	81 91

All (3) residues with a non-rotameric sidechain are listed below:

Mol	Chain	Res	Type
1	A	275	THR
1	A	277	THR
1	A	393	TRP

Some sidechains can be flipped to improve hydrogen bonding and reduce clashes. All (1) such sidechains are listed below:

Mol	Chain	Res	Type
1	A	99	HIS

### 5.3.3 RNA [i](#)

There are no RNA molecules in this entry.

## 5.4 Non-standard residues in protein, DNA, RNA chains [i](#)

There are no non-standard protein/DNA/RNA residues in this entry.

## 5.5 Carbohydrates [i](#)

There are no carbohydrates in this entry.

## 5.6 Ligand geometry [i](#)

14 ligands are modelled in this entry.

In the following table, the Counts columns list the number of bonds (or angles) for which Mogul statistics could be retrieved, the number of bonds (or angles) that are observed in the model and the number of bonds (or angles) that are defined in the Chemical Component Dictionary. The Link column lists molecule types, if any, to which the group is linked. The Z score for a bond length (or angle) is the number of standard deviations the observed value is removed from the expected value. A bond length (or angle) with  $|Z| > 2$  is considered an outlier worth inspection. RMSZ is the root-mean-square of all Z scores of the bond lengths (or angles).

Mol	Type	Chain	Res	Link	Bond lengths			Bond angles		
					Counts	RMSZ	# Z  > 2	Counts	RMSZ	# Z  > 2
2	78M	A	505	-	21,21,21	0.73	1 (4%)	22,22,22	0.77	1 (4%)
2	78M	A	512	-	21,21,21	0.79	1 (4%)	22,22,22	1.11	1 (4%)
2	78M	A	513	-	21,21,21	0.81	1 (4%)	22,22,22	0.84	1 (4%)
2	78M	A	501	-	21,21,21	0.76	1 (4%)	22,22,22	0.80	1 (4%)
2	78M	A	508	-	21,21,21	0.72	1 (4%)	22,22,22	0.81	1 (4%)
2	78M	A	504	-	21,21,21	0.78	1 (4%)	22,22,22	0.88	1 (4%)
2	78M	A	509	-	21,21,21	0.75	1 (4%)	22,22,22	0.88	1 (4%)
2	78M	A	507	-	21,21,21	0.75	1 (4%)	22,22,22	0.87	1 (4%)
3	PO4	A	514	-	4,4,4	0.94	0	6,6,6	0.64	0
2	78M	A	503	-	21,21,21	0.76	1 (4%)	22,22,22	0.90	1 (4%)
2	78M	A	510	-	21,21,21	0.78	1 (4%)	22,22,22	0.98	1 (4%)
2	78M	A	511	-	21,21,21	0.78	1 (4%)	22,22,22	0.86	1 (4%)
2	78M	A	506	-	21,21,21	0.78	1 (4%)	22,22,22	1.09	1 (4%)
2	78M	A	502	-	21,21,21	0.75	1 (4%)	22,22,22	0.90	1 (4%)

In the following table, the Chirals column lists the number of chiral outliers, the number of chiral centers analysed, the number of these observed in the model and the number defined in the Chemical Component Dictionary. Similar counts are reported in the Torsion and Rings columns. '-' means no outliers of that kind were identified.

Mol	Type	Chain	Res	Link	Chirals	Torsions	Rings
2	78M	A	505	-	-	13/21/21/21	-
2	78M	A	512	-	-	12/21/21/21	-
2	78M	A	513	-	-	6/21/21/21	-
2	78M	A	501	-	-	13/21/21/21	-
2	78M	A	508	-	-	8/21/21/21	-
2	78M	A	504	-	-	8/21/21/21	-
2	78M	A	509	-	-	11/21/21/21	-
2	78M	A	507	-	-	9/21/21/21	-
2	78M	A	503	-	-	8/21/21/21	-
2	78M	A	510	-	-	11/21/21/21	-
2	78M	A	511	-	-	11/21/21/21	-
2	78M	A	506	-	-	9/21/21/21	-
2	78M	A	502	-	-	13/21/21/21	-

All (13) bond length outliers are listed below:

Mol	Chain	Res	Type	Atoms	Z	Observed(Å)	Ideal(Å)
2	A	513	78M	O2-C1	3.12	1.42	1.33
2	A	506	78M	O2-C1	3.03	1.42	1.33
2	A	510	78M	O2-C1	3.01	1.42	1.33
2	A	511	78M	O2-C1	2.98	1.42	1.33
2	A	512	78M	O2-C1	2.92	1.41	1.33
2	A	504	78M	O2-C1	2.76	1.41	1.33
2	A	509	78M	O2-C1	2.73	1.41	1.33
2	A	501	78M	O2-C1	2.71	1.41	1.33
2	A	508	78M	O2-C1	2.68	1.41	1.33
2	A	503	78M	O2-C1	2.64	1.41	1.33
2	A	502	78M	O2-C1	2.60	1.40	1.33
2	A	507	78M	O2-C1	2.57	1.40	1.33
2	A	505	78M	O2-C1	2.55	1.40	1.33

All (13) bond angle outliers are listed below:

Mol	Chain	Res	Type	Atoms	Z	Observed(°)	Ideal(°)
2	A	512	78M	O2-C1-C2	3.84	123.97	111.91
2	A	506	78M	O2-C1-C2	3.54	123.02	111.91
2	A	510	78M	O2-C1-C2	3.49	122.86	111.91
2	A	507	78M	O2-C1-C2	3.08	121.57	111.91
2	A	513	78M	O2-C1-C2	3.03	121.43	111.91
2	A	509	78M	O2-C1-C2	3.02	121.39	111.91
2	A	511	78M	O2-C1-C2	3.02	121.39	111.91
2	A	502	78M	O2-C1-C2	2.78	120.62	111.91
2	A	503	78M	O2-C1-C2	2.74	120.51	111.91
2	A	501	78M	O2-C1-C2	2.74	120.50	111.91
2	A	508	78M	O2-C1-C2	2.65	120.22	111.91
2	A	505	78M	O2-C1-C2	2.58	120.02	111.91
2	A	504	78M	O2-C1-C2	2.55	119.92	111.91

There are no chirality outliers.

All (132) torsion outliers are listed below:

Mol	Chain	Res	Type	Atoms
2	A	505	78M	C17-C18-C20-O21
2	A	505	78M	O2-C17-C18-C20
2	A	512	78M	O2-C17-C18-O19
2	A	512	78M	O1-C1-O2-C17
2	A	512	78M	C2-C1-O2-C17
2	A	501	78M	C17-C18-C20-O21
2	A	504	78M	O2-C17-C18-C20

*Continued on next page...*

*Continued from previous page...*

Mol	Chain	Res	Type	Atoms
2	A	504	78M	O2-C17-C18-O19
2	A	507	78M	C17-C18-C20-O21
2	A	510	78M	O2-C17-C18-C20
2	A	510	78M	O2-C17-C18-O19
2	A	510	78M	O1-C1-O2-C17
2	A	502	78M	C17-C18-C20-O21
2	A	508	78M	O1-C1-O2-C17
2	A	508	78M	C2-C1-O2-C17
2	A	510	78M	C2-C1-O2-C17
2	A	506	78M	C2-C1-O2-C17
2	A	505	78M	O2-C17-C18-O19
2	A	506	78M	O2-C17-C18-O19
2	A	506	78M	O1-C1-O2-C17
2	A	507	78M	C2-C1-O2-C17
2	A	502	78M	C2-C1-O2-C17
2	A	509	78M	O1-C1-O2-C17
2	A	507	78M	O1-C1-O2-C17
2	A	509	78M	C2-C1-O2-C17
2	A	509	78M	O2-C17-C18-C20
2	A	505	78M	C1-C2-C3-C4
2	A	509	78M	O2-C17-C18-O19
2	A	510	78M	C1-C2-C3-C4
2	A	511	78M	C1-C2-C3-C4
2	A	502	78M	C1-C2-C3-C4
2	A	501	78M	O19-C18-C20-O21
2	A	507	78M	O19-C18-C20-O21
2	A	509	78M	C1-C2-C3-C4
2	A	512	78M	C3-C4-C5-C6
2	A	504	78M	C2-C1-O2-C17
2	A	502	78M	O1-C1-O2-C17
2	A	501	78M	C2-C1-O2-C17
2	A	508	78M	C1-C2-C3-C4
2	A	504	78M	O1-C1-O2-C17
2	A	510	78M	C10-C11-C12-C13
2	A	511	78M	C2-C3-C4-C5
2	A	501	78M	C9-C10-C11-C12
2	A	509	78M	C3-C4-C5-C6
2	A	510	78M	C3-C4-C5-C6
2	A	507	78M	C2-C3-C4-C5
2	A	512	78M	C17-C18-C20-O21
2	A	506	78M	C1-C2-C3-C4
2	A	505	78M	C11-C12-C13-C14

*Continued on next page...*

*Continued from previous page...*

Mol	Chain	Res	Type	Atoms
2	A	502	78M	C11-C12-C13-C14
2	A	512	78M	C11-C12-C13-C14
2	A	512	78M	C1-C2-C3-C4
2	A	505	78M	C10-C11-C12-C13
2	A	508	78M	C11-C12-C13-C14
2	A	505	78M	O19-C18-C20-O21
2	A	512	78M	O19-C18-C20-O21
2	A	502	78M	O19-C18-C20-O21
2	A	503	78M	C4-C5-C6-C7
2	A	501	78M	O1-C1-O2-C17
2	A	511	78M	C3-C4-C5-C6
2	A	501	78M	C11-C10-C9-C8
2	A	511	78M	C4-C5-C6-C7
2	A	513	78M	C10-C11-C12-C13
2	A	513	78M	C12-C13-C14-C15
2	A	505	78M	C2-C3-C4-C5
2	A	509	78M	C10-C11-C12-C13
2	A	501	78M	C3-C4-C5-C6
2	A	502	78M	C4-C5-C6-C7
2	A	513	78M	C2-C3-C4-C5
2	A	506	78M	C3-C4-C5-C6
2	A	501	78M	C4-C5-C6-C7
2	A	511	78M	C2-C1-O2-C17
2	A	501	78M	C10-C11-C12-C13
2	A	505	78M	C12-C13-C14-C15
2	A	503	78M	C10-C11-C12-C13
2	A	513	78M	C11-C10-C9-C8
2	A	502	78M	C9-C10-C11-C12
2	A	508	78M	C10-C11-C12-C13
2	A	506	78M	C11-C12-C13-C14
2	A	506	78M	C2-C3-C4-C5
2	A	511	78M	O1-C1-O2-C17
2	A	510	78M	C12-C13-C14-C15
2	A	507	78M	C3-C4-C5-C6
2	A	506	78M	C10-C11-C12-C13
2	A	506	78M	O2-C17-C18-C20
2	A	505	78M	C9-C10-C11-C12
2	A	509	78M	C4-C5-C6-C7
2	A	513	78M	C9-C10-C11-C12
2	A	511	78M	C11-C10-C9-C8
2	A	513	78M	C1-C2-C3-C4
2	A	509	78M	C2-C3-C4-C5

*Continued on next page...*

*Continued from previous page...*

Mol	Chain	Res	Type	Atoms
2	A	507	78M	C12-C13-C14-C15
2	A	501	78M	C1-C2-C3-C4
2	A	503	78M	C12-C13-C14-C15
2	A	511	78M	O2-C17-C18-C20
2	A	510	78M	C11-C12-C13-C14
2	A	507	78M	C5-C6-C7-C8
2	A	511	78M	C7-C8-C9-C10
2	A	512	78M	O2-C17-C18-C20
2	A	504	78M	C11-C12-C13-C14
2	A	508	78M	C2-C3-C4-C5
2	A	502	78M	C11-C10-C9-C8
2	A	512	78M	C11-C10-C9-C8
2	A	508	78M	C3-C4-C5-C6
2	A	501	78M	O2-C17-C18-O19
2	A	512	78M	C12-C13-C14-C15
2	A	509	78M	C11-C12-C13-C14
2	A	504	78M	C12-C13-C14-C15
2	A	502	78M	C2-C3-C4-C5
2	A	512	78M	C9-C10-C11-C12
2	A	503	78M	C17-C18-C20-O21
2	A	502	78M	C5-C6-C7-C8
2	A	509	78M	C12-C13-C14-C15
2	A	511	78M	C5-C6-C7-C8
2	A	507	78M	C7-C8-C9-C10
2	A	510	78M	C5-C6-C7-C8
2	A	510	78M	C7-C8-C9-C10
2	A	501	78M	C5-C6-C7-C8
2	A	501	78M	C7-C8-C9-C10
2	A	503	78M	C5-C6-C7-C8
2	A	503	78M	O1-C1-O2-C17
2	A	505	78M	C5-C6-C7-C8
2	A	503	78M	C2-C1-O2-C17
2	A	502	78M	O2-C1-C2-C3
2	A	505	78M	C3-C4-C5-C6
2	A	505	78M	C11-C10-C9-C8
2	A	511	78M	C9-C10-C11-C12
2	A	503	78M	C11-C12-C13-C14
2	A	502	78M	O1-C1-C2-C3
2	A	508	78M	C5-C6-C7-C8
2	A	504	78M	O2-C1-C2-C3
2	A	504	78M	O1-C1-C2-C3

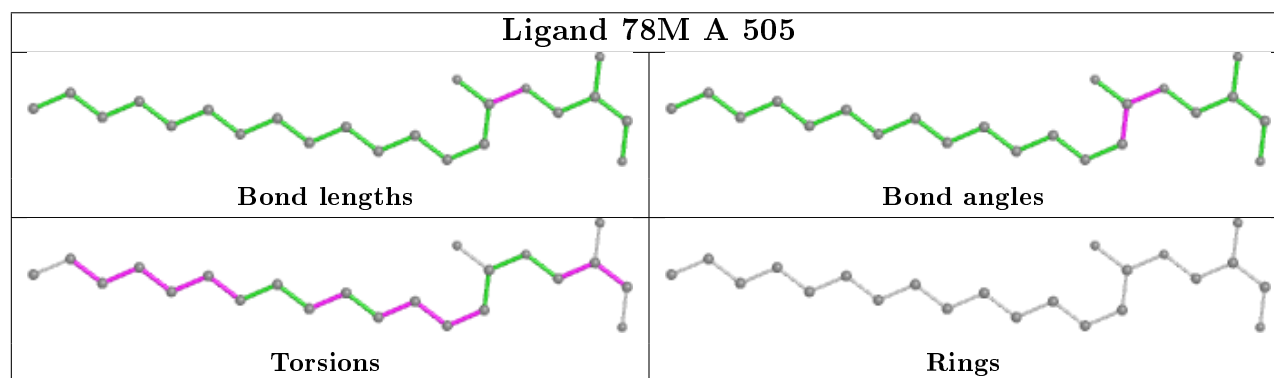
There are no ring outliers.

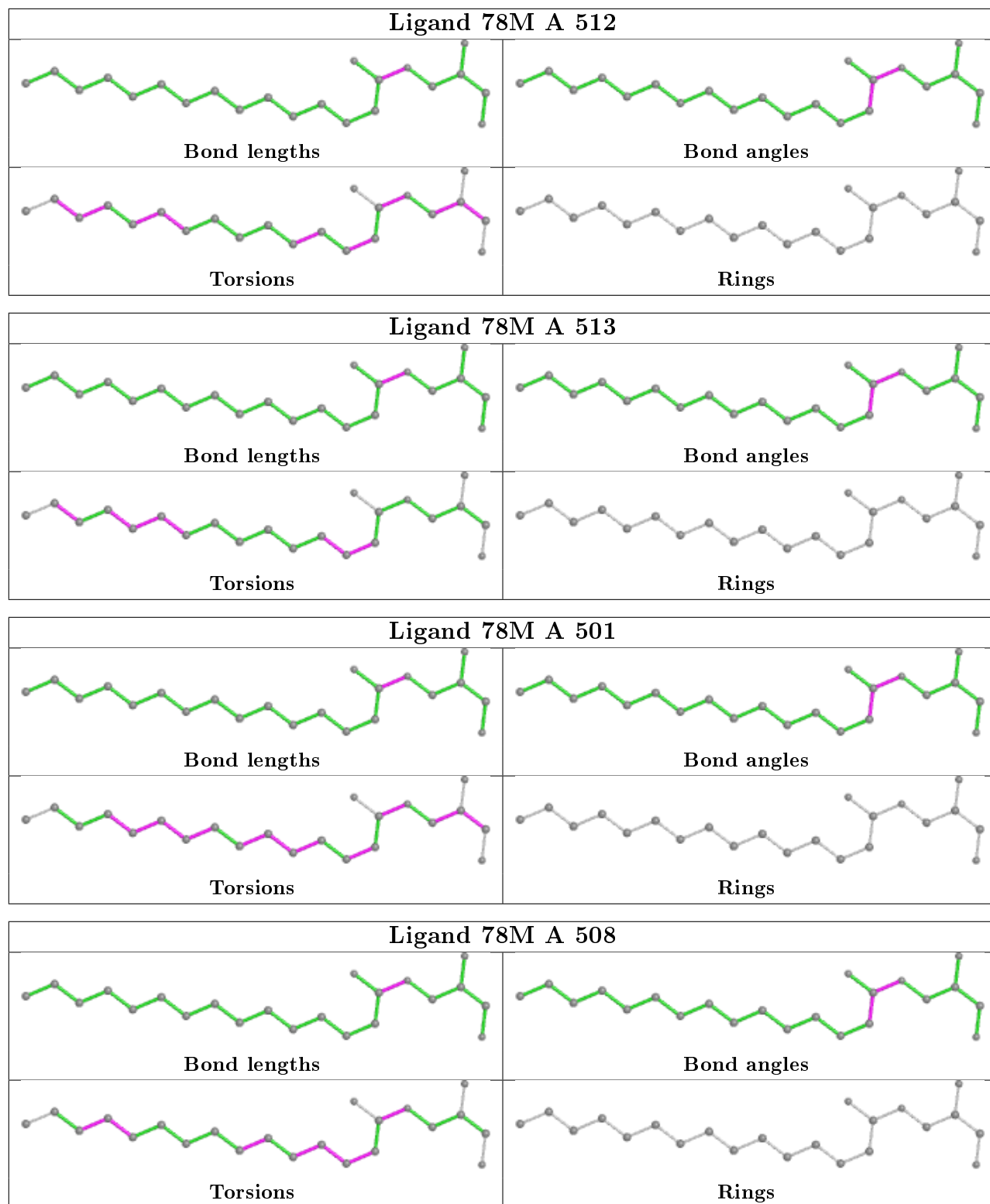


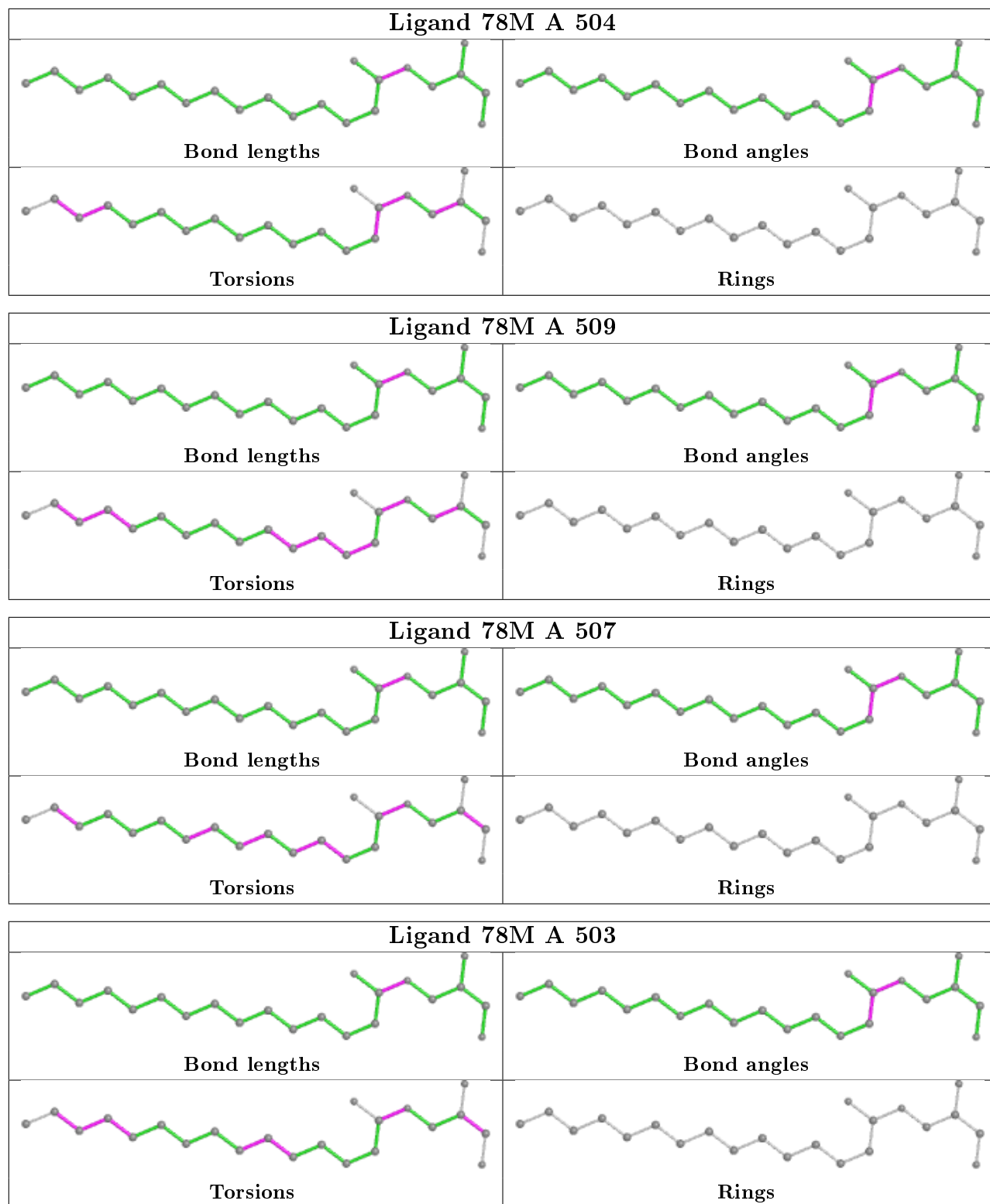
11 monomers are involved in 19 short contacts:

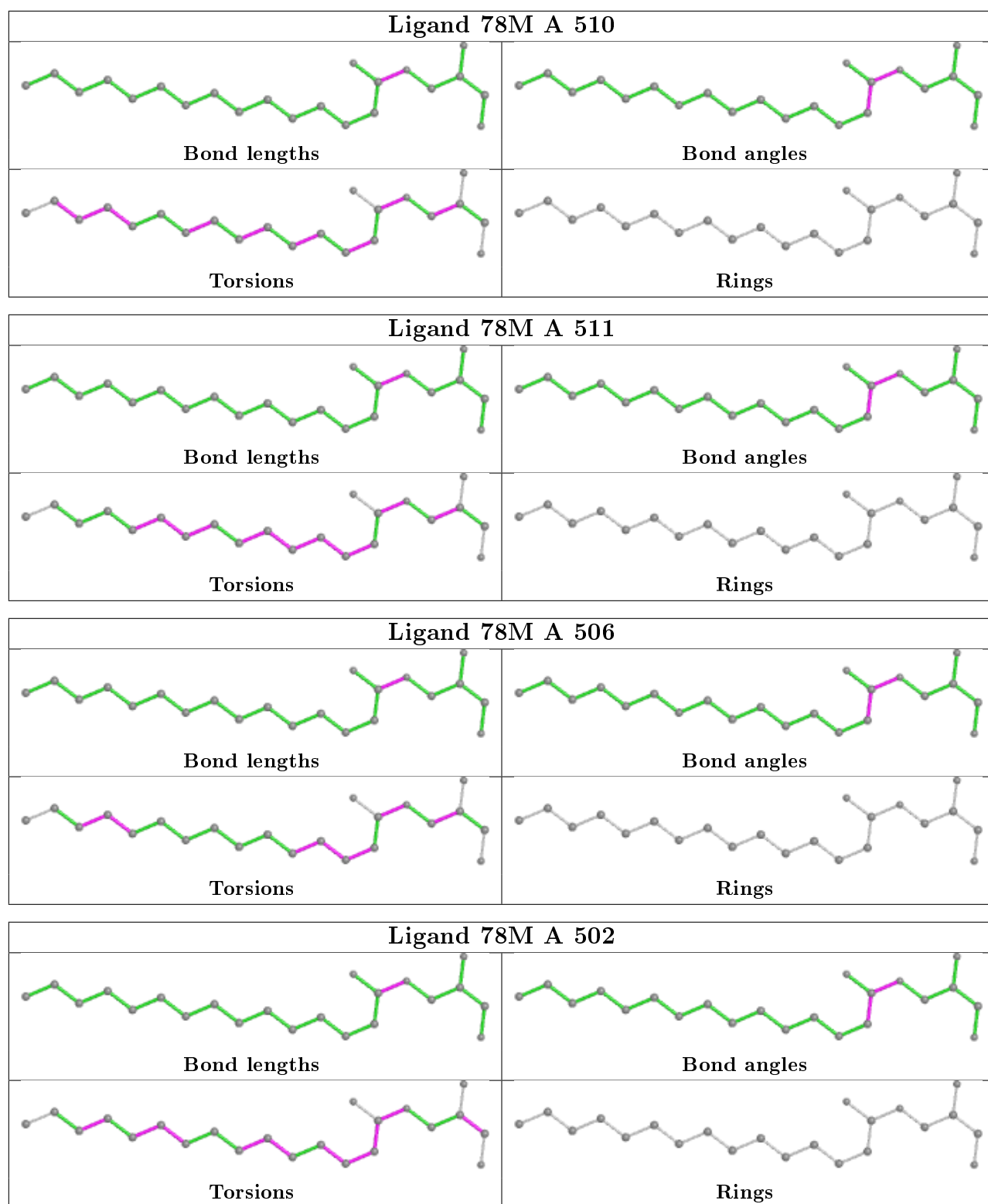
Mol	Chain	Res	Type	Clashes	Symm-Clashes
2	A	512	78M	4	0
2	A	513	78M	1	0
2	A	501	78M	1	0
2	A	504	78M	4	0
2	A	509	78M	1	0
2	A	507	78M	1	0
2	A	503	78M	1	0
2	A	510	78M	3	0
2	A	511	78M	1	0
2	A	506	78M	2	0
2	A	502	78M	4	0

The following is a two-dimensional graphical depiction of Mogul quality analysis of bond lengths, bond angles, torsion angles, and ring geometry for all instances of the Ligand of Interest. In addition, ligands with molecular weight > 250 and outliers as shown on the validation Tables will also be included. For torsion angles, if less than 5% of the Mogul distribution of torsion angles is within 10 degrees of the torsion angle in question, then that torsion angle is considered an outlier. Any bond that is central to one or more torsion angles identified as an outlier by Mogul will be highlighted in the graph. For rings, the root-mean-square deviation (RMSD) between the ring in question and similar rings identified by Mogul is calculated over all ring torsion angles. If the average RMSD is greater than 60 degrees and the minimal RMSD between the ring in question and any Mogul-identified rings is also greater than 60 degrees, then that ring is considered an outlier. The outliers are highlighted in purple. The color gray indicates Mogul did not find sufficient equivalents in the CSD to analyse the geometry.









## 5.7 Other polymers [\(i\)](#)

There are no such residues in this entry.

## 5.8 Polymer linkage issues

There are no chain breaks in this entry.

## 6 Fit of model and data

### 6.1 Protein, DNA and RNA chains

In the following table, the column labelled ‘#RSRZ> 2’ contains the number (and percentage) of RSRZ outliers, followed by percent RSRZ outliers for the chain as percentile scores relative to all X-ray entries and entries of similar resolution. The OWAB column contains the minimum, median, 95<sup>th</sup> percentile and maximum values of the occupancy-weighted average B-factor per residue. The column labelled ‘Q< 0.9’ lists the number of (and percentage) of residues with an average occupancy less than 0.9.

Mol	Chain	Analysed	<RSRZ>	#RSRZ>2	OWAB(Å <sup>2</sup> )	Q<0.9
1	A	466/483 (96%)	0.35	42 (9%) <b>9</b> <b>12</b>	35, 46, 89, 108	0

All (42) RSRZ outliers are listed below:

Mol	Chain	Res	Type	RSRZ
1	A	278	GLU	7.9
1	A	277	THR	7.1
1	A	279	HIS	5.3
1	A	349	ASN	5.2
1	A	276	SER	5.1
1	A	275	THR	5.1
1	A	140	HIS	4.7
1	A	268	MET	4.7
1	A	348	LYS	4.6
1	A	341	TRP	4.5
1	A	280	LEU	4.3
1	A	267	TRP	4.0
1	A	139	GLU	3.7
1	A	5	GLY	3.5
1	A	281	ARG	3.5
1	A	413	LYS	3.5
1	A	269	ILE	3.5
1	A	50	HIS	3.4
1	A	138	ASP	3.2
1	A	476	GLN	3.1
1	A	346	TRP	3.0
1	A	265	PHE	2.8
1	A	411	THR	2.8
1	A	284	SER	2.8
1	A	142	ARG	2.8
1	A	270	SER	2.7
1	A	420	ASN	2.7

*Continued on next page...*

*Continued from previous page...*

Mol	Chain	Res	Type	RSRZ
1	A	421	SER	2.6
1	A	242	GLY	2.6
1	A	271	SER	2.6
1	A	345	ALA	2.6
1	A	63	TYR	2.5
1	A	200	THR	2.5
1	A	263	PHE	2.4
1	A	347	LYS	2.4
1	A	408	LEU	2.3
1	A	477	GLY	2.3
1	A	423	MET	2.2
1	A	29	TYR	2.2
1	A	412	THR	2.1
1	A	414	LEU	2.0
1	A	106	PHE	2.0

## 6.2 Non-standard residues in protein, DNA, RNA chains [i](#)

There are no non-standard protein/DNA/RNA residues in this entry.

## 6.3 Carbohydrates [i](#)

There are no carbohydrates in this entry.

## 6.4 Ligands [i](#)

In the following table, the Atoms column lists the number of modelled atoms in the group and the number defined in the chemical component dictionary. The B-factors column lists the minimum, median, 95<sup>th</sup> percentile and maximum values of B factors of atoms in the group. The column labelled 'Q< 0.9' lists the number of atoms with occupancy less than 0.9.

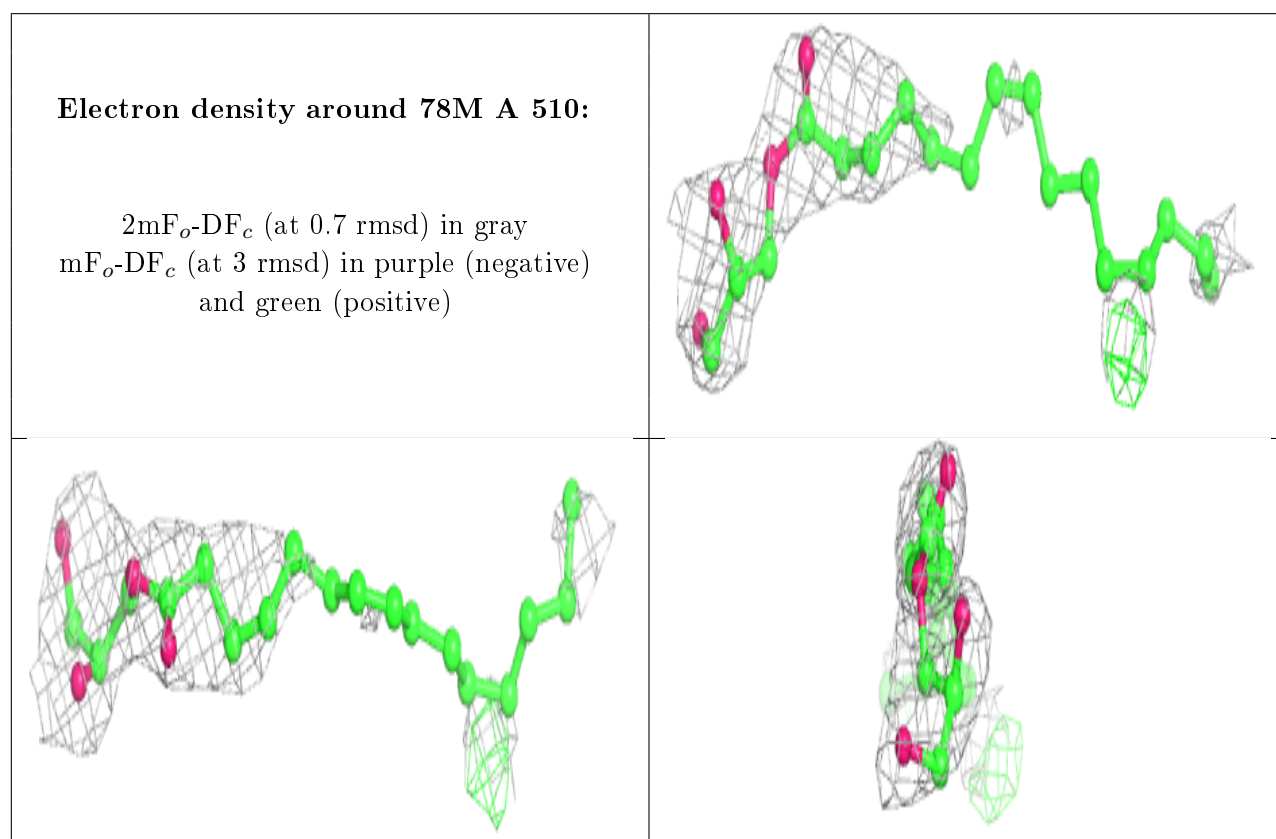
Mol	Type	Chain	Res	Atoms	RSCC	RSR	B-factors(Å <sup>2</sup> )	Q<0.9
2	78M	A	510	22/22	0.69	0.46	70,79,84,86	0
2	78M	A	512	22/22	0.72	0.25	47,58,65,67	0
2	78M	A	507	22/22	0.75	0.32	61,69,75,81	0
2	78M	A	513	22/22	0.77	0.24	54,63,70,76	0
2	78M	A	511	22/22	0.77	0.26	56,67,72,74	0
2	78M	A	506	22/22	0.77	0.35	53,65,79,80	0
2	78M	A	501	22/22	0.78	0.27	55,69,76,83	0
2	78M	A	505	22/22	0.81	0.27	49,62,74,75	0

*Continued on next page...*

Continued from previous page...

Mol	Type	Chain	Res	Atoms	RSCC	RSR	B-factors( $\text{\AA}^2$ )	Q<0.9
2	78M	A	504	22/22	0.81	0.25	52,66,72,76	0
2	78M	A	508	22/22	0.82	0.20	63,71,83,85	0
2	78M	A	509	22/22	0.83	0.24	49,62,81,88	0
2	78M	A	503	22/22	0.87	0.23	49,60,73,76	0
2	78M	A	502	22/22	0.90	0.25	53,63,68,75	0
3	PO4	A	514	5/5	0.95	0.24	63,70,73,79	5

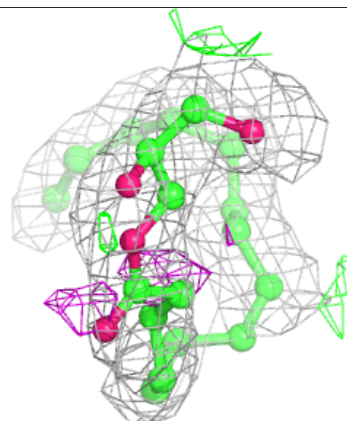
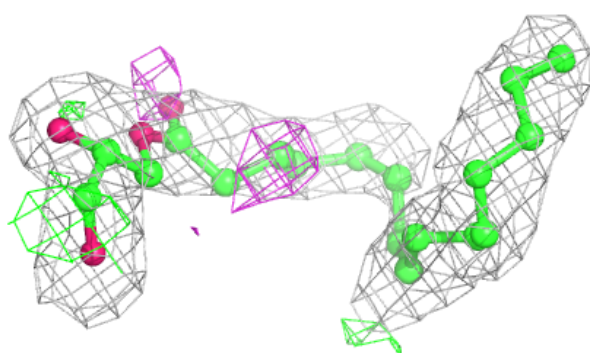
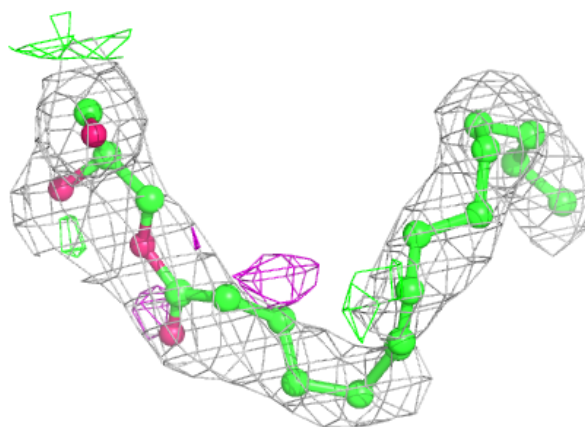
The following is a graphical depiction of the model fit to experimental electron density of all instances of the Ligand of Interest. In addition, ligands with molecular weight > 250 and outliers as shown on the geometry validation Tables will also be included. Each fit is shown from different orientation to approximate a three-dimensional view.



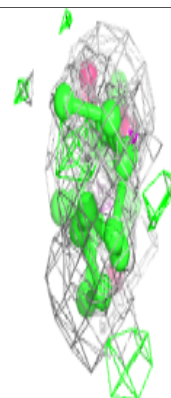
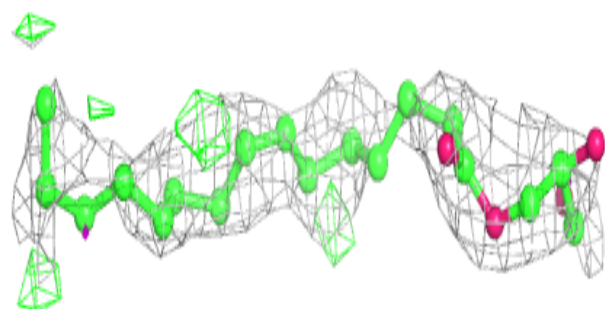
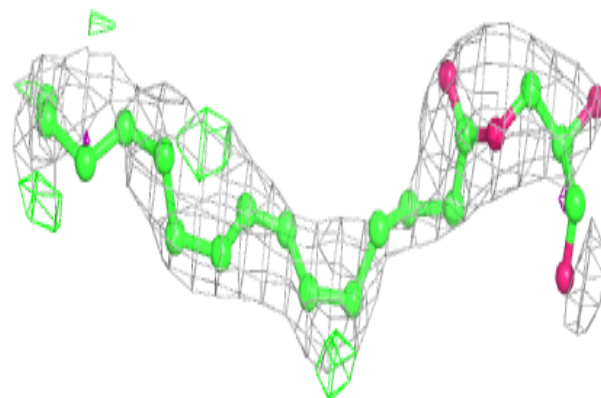


**Electron density around 78M A 512:**

$2mF_o-DF_c$  (at 0.7 rmsd) in gray  
 $mF_o-DF_c$  (at 3 rmsd) in purple (negative)  
and green (positive)

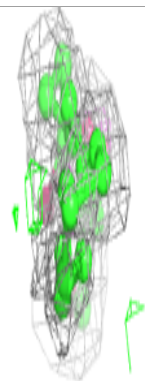
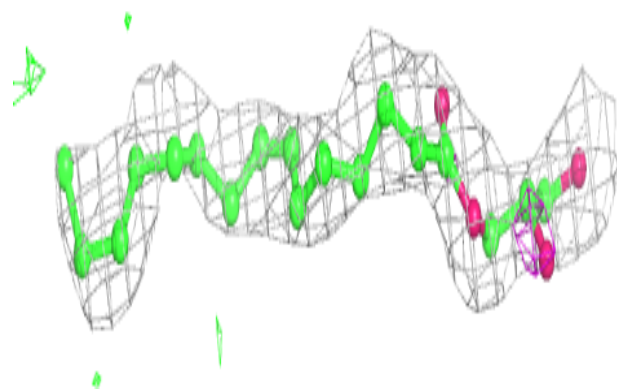
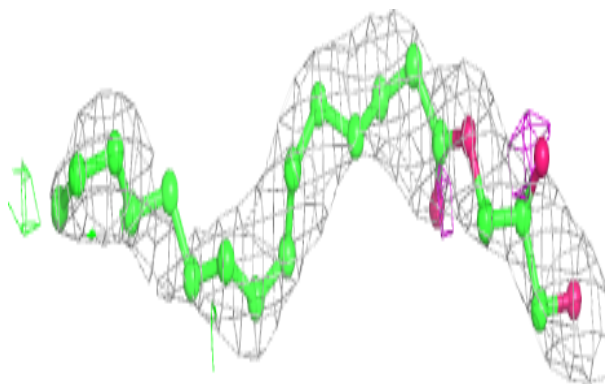
**Electron density around 78M A 507:**

$2mF_o-DF_c$  (at 0.7 rmsd) in gray  
 $mF_o-DF_c$  (at 3 rmsd) in purple (negative)  
and green (positive)

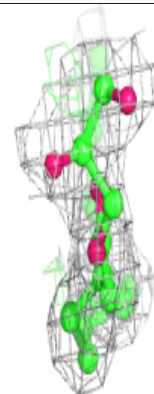
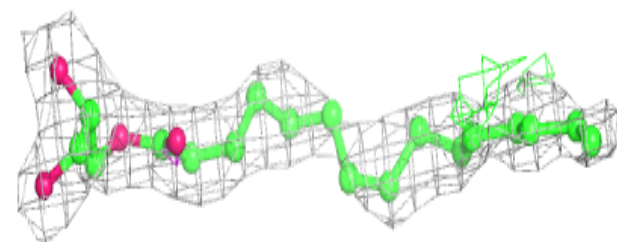
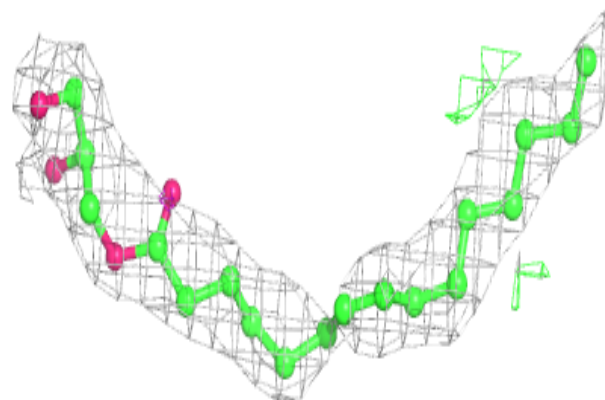


**Electron density around 78M A 513:**

$2mF_o-DF_c$  (at 0.7 rmsd) in gray  
 $mF_o-DF_c$  (at 3 rmsd) in purple (negative)  
and green (positive)

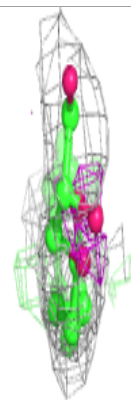
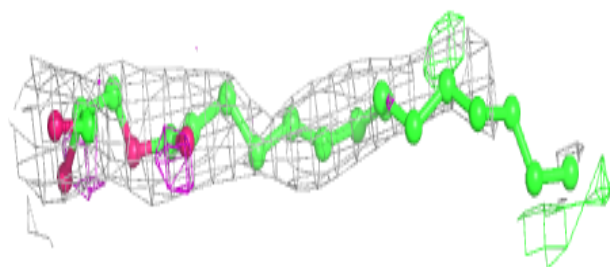
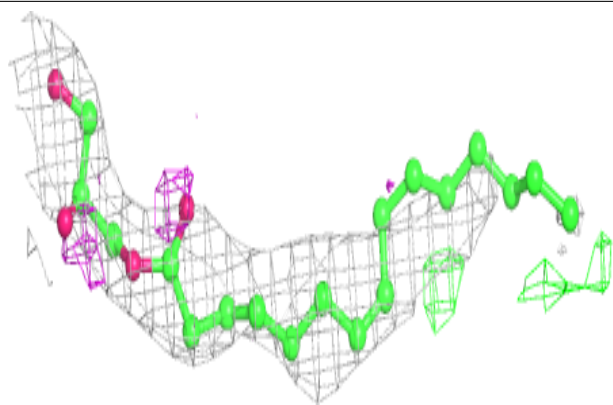
**Electron density around 78M A 511:**

$2mF_o-DF_c$  (at 0.7 rmsd) in gray  
 $mF_o-DF_c$  (at 3 rmsd) in purple (negative)  
and green (positive)

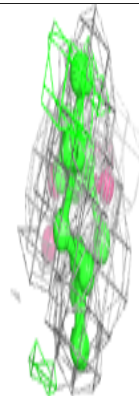
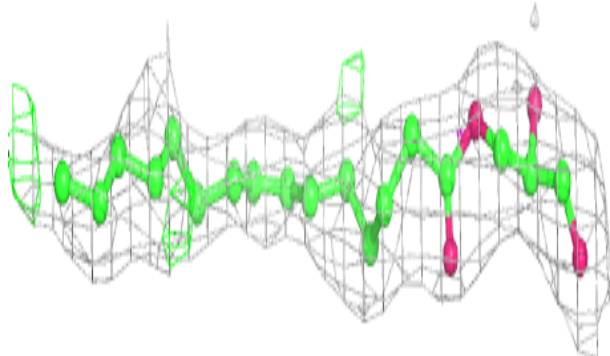
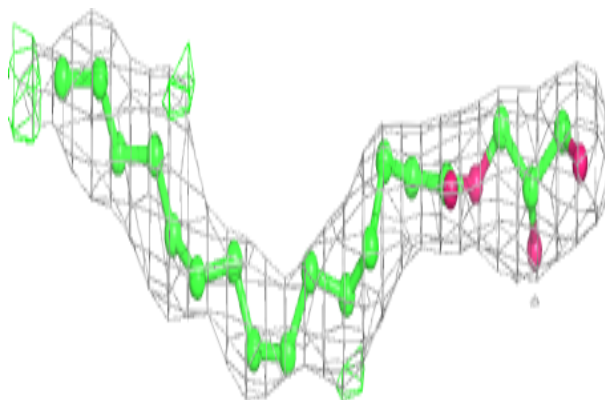


**Electron density around 78M A 506:**

$2mF_o-DF_c$  (at 0.7 rmsd) in gray  
 $mF_o-DF_c$  (at 3 rmsd) in purple (negative)  
and green (positive)

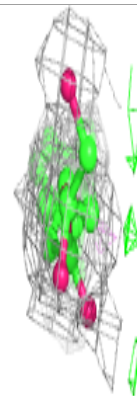
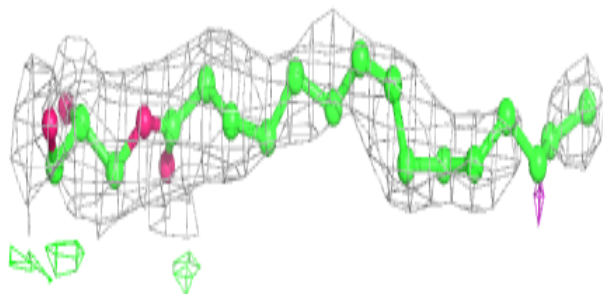
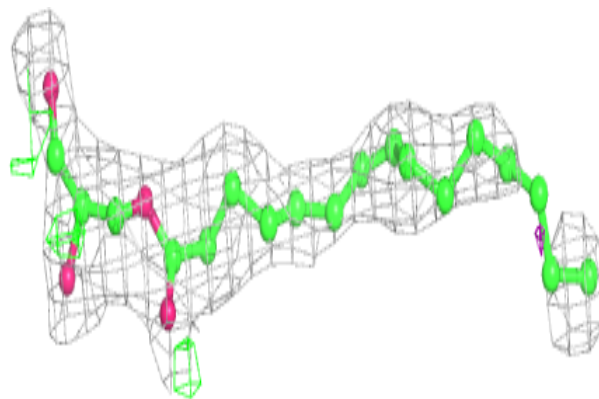
**Electron density around 78M A 501:**

$2mF_o-DF_c$  (at 0.7 rmsd) in gray  
 $mF_o-DF_c$  (at 3 rmsd) in purple (negative)  
and green (positive)

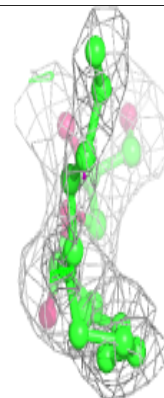
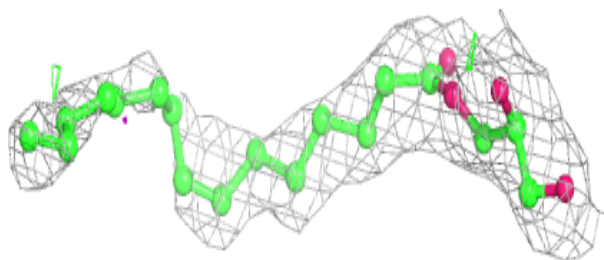
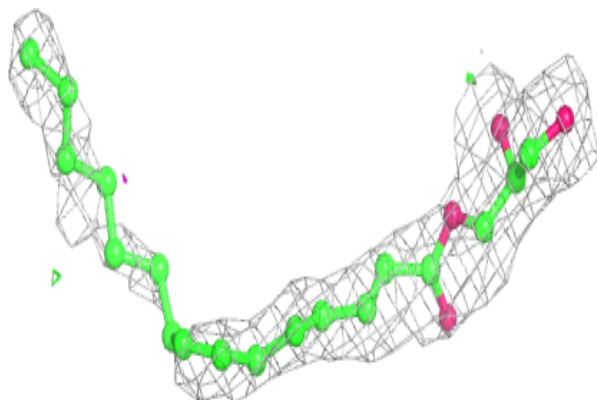


**Electron density around 78M A 505:**

$2mF_o-DF_c$  (at 0.7 rmsd) in gray  
 $mF_o-DF_c$  (at 3 rmsd) in purple (negative)  
and green (positive)

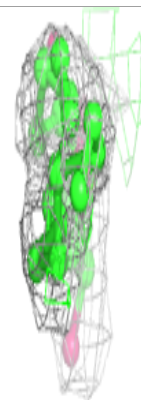
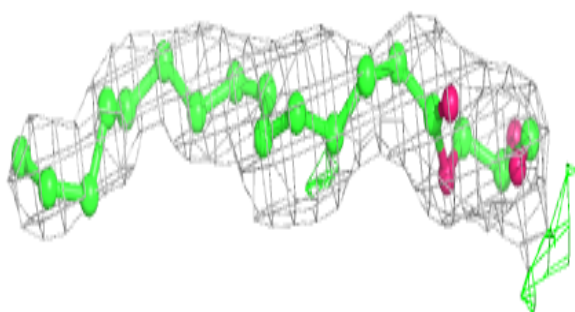
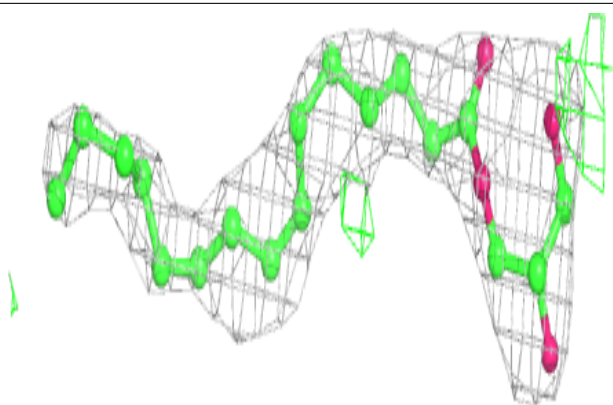
**Electron density around 78M A 504:**

$2mF_o-DF_c$  (at 0.7 rmsd) in gray  
 $mF_o-DF_c$  (at 3 rmsd) in purple (negative)  
and green (positive)

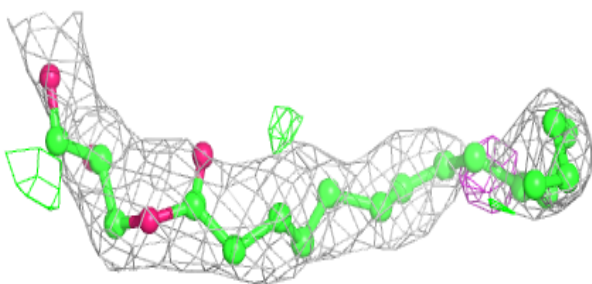
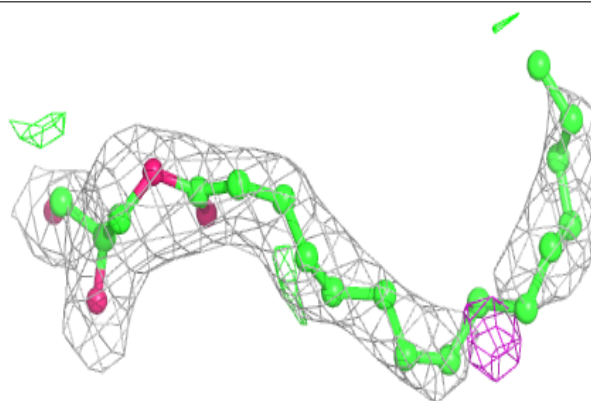


**Electron density around 78M A 508:**

$2mF_o-DF_c$  (at 0.7 rmsd) in gray  
 $mF_o-DF_c$  (at 3 rmsd) in purple (negative)  
and green (positive)

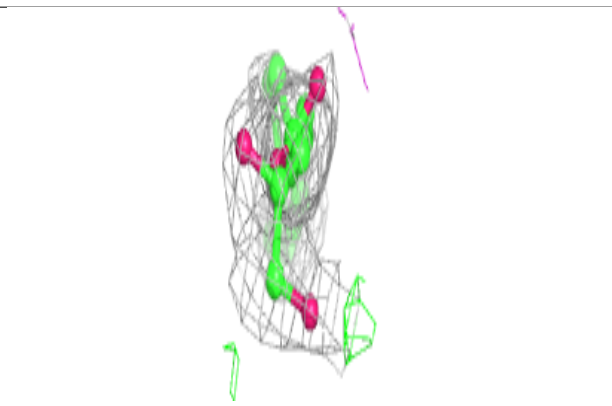
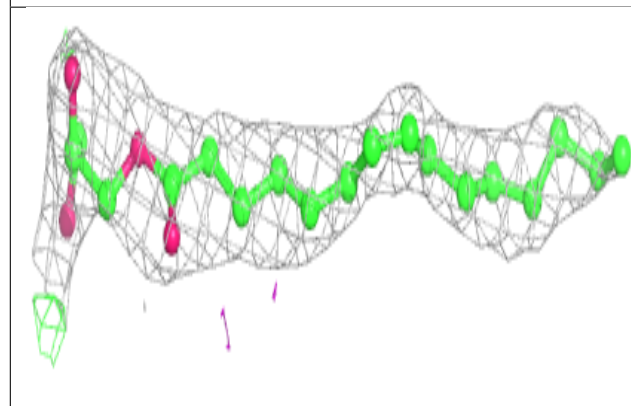
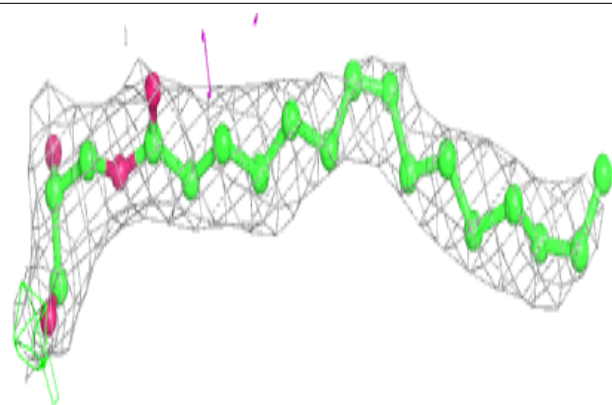
**Electron density around 78M A 509:**

$2mF_o-DF_c$  (at 0.7 rmsd) in gray  
 $mF_o-DF_c$  (at 3 rmsd) in purple (negative)  
and green (positive)

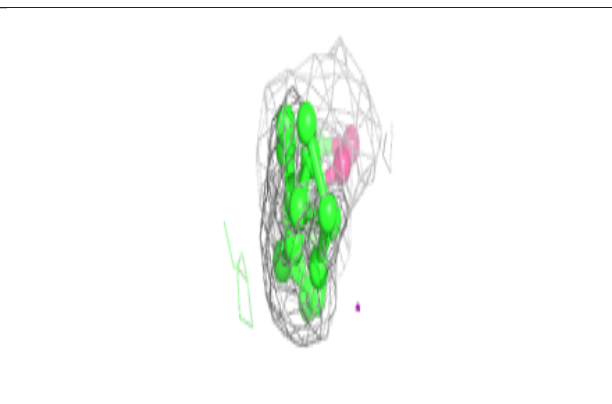
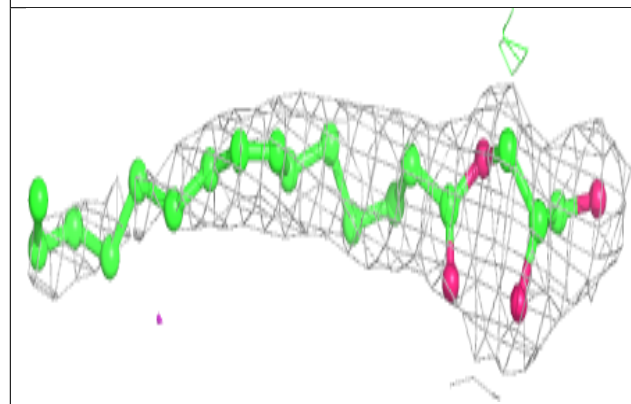
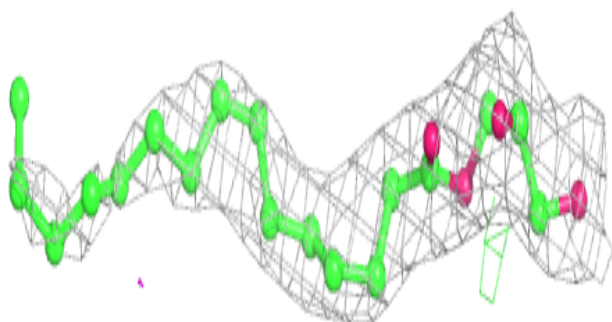


**Electron density around 78M A 503:**

$2mF_o-DF_c$  (at 0.7 rmsd) in gray  
 $mF_o-DF_c$  (at 3 rmsd) in purple (negative)  
and green (positive)

**Electron density around 78M A 502:**

$2mF_o-DF_c$  (at 0.7 rmsd) in gray  
 $mF_o-DF_c$  (at 3 rmsd) in purple (negative)  
and green (positive)



## 6.5 Other polymers

There are no such residues in this entry.