



# wwPDB X-ray Structure Validation Summary Report ⓘ

Oct 10, 2023 – 02:43 PM EDT

PDB ID : 6XCJ  
Title : Crystal Structure of DH650 Fab from a Rhesus Macaque in Complex with HIV-1 gp120 Core  
Authors : Raymond, D.D.; Chug, H.; Harrison, S.C.  
Deposited on : 2020-06-08  
Resolution : 2.80 Å(reported)

This is a wwPDB X-ray Structure Validation Summary Report for a publicly released PDB entry.

We welcome your comments at [validation@mail.wwpdb.org](mailto:validation@mail.wwpdb.org)

A user guide is available at

<https://www.wwpdb.org/validation/2017/XrayValidationReportHelp>

with specific help available everywhere you see the ⓘ symbol.

The types of validation reports are described at

<http://www.wwpdb.org/validation/2017/FAQs#types>.

---

The following versions of software and data (see [references ⓘ](#)) were used in the production of this report:

MolProbity : 4.02b-467  
Mogul : 1.8.5 (274361), CSD as541be (2020)  
Xtriage (Phenix) : 1.13  
EDS : 2.35.1  
Percentile statistics : 20191225.v01 (using entries in the PDB archive December 25th 2019)  
Refmac : 5.8.0158  
CCP4 : 7.0.044 (Gargrove)  
Ideal geometry (proteins) : Engh & Huber (2001)  
Ideal geometry (DNA, RNA) : Parkinson et al. (1996)  
Validation Pipeline (wwPDB-VP) : 2.35.1

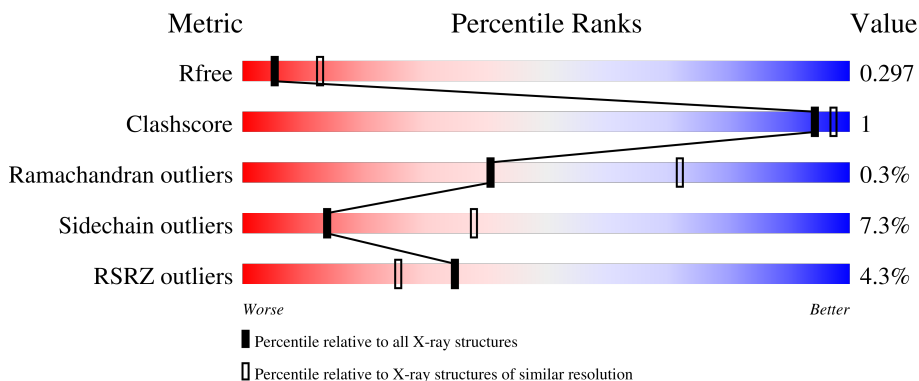
# 1 Overall quality at a glance

The following experimental techniques were used to determine the structure:

*X-RAY DIFFRACTION*

The reported resolution of this entry is 2.80 Å.

Percentile scores (ranging between 0-100) for global validation metrics of the entry are shown in the following graphic. The table shows the number of entries on which the scores are based.



Metric	Whole archive (#Entries)	Similar resolution (#Entries, resolution range(Å))
$R_{free}$	130704	3140 (2.80-2.80)
Clashscore	141614	3569 (2.80-2.80)
Ramachandran outliers	138981	3498 (2.80-2.80)
Sidechain outliers	138945	3500 (2.80-2.80)
RSRZ outliers	127900	3078 (2.80-2.80)

The table below summarises the geometric issues observed across the polymeric chains and their fit to the electron density. The red, orange, yellow and green segments of the lower bar indicate the fraction of residues that contain outliers for  $\geq 3$ , 2, 1 and 0 types of geometric quality criteria respectively. A grey segment represents the fraction of residues that are not modelled. The numeric value for each fraction is indicated below the corresponding segment, with a dot representing fractions  $\leq 5\%$ . The upper red bar (where present) indicates the fraction of residues that have poor fit to the electron density. The numeric value is given above the bar.

Mol	Chain	Length	Quality of chain
1	G	357	 6% (red), 69% (green), 9% (yellow), 22% (grey)
2	H	226	 3% (red), 89% (green), 8% (yellow), .. (grey)
3	L	220	 % (red), 92% (green), 8% (yellow)

## 2 Entry composition [i](#)

There are 5 unique types of molecules in this entry. The entry contains 11296 atoms, of which 5584 are hydrogens and 0 are deuteriums.

In the tables below, the ZeroOcc column contains the number of atoms modelled with zero occupancy, the AltConf column contains the number of residues with at least one atom in alternate conformation and the Trace column contains the number of residues modelled with at most 2 atoms.

- Molecule 1 is a protein called Envelope Glycoprotein gp120.

Mol	Chain	Residues	Atoms					ZeroOcc	AltConf	Trace	
			Total	C	H	N	O				S
1	G	279	4356	1380	2163	380	415	18	0	0	0

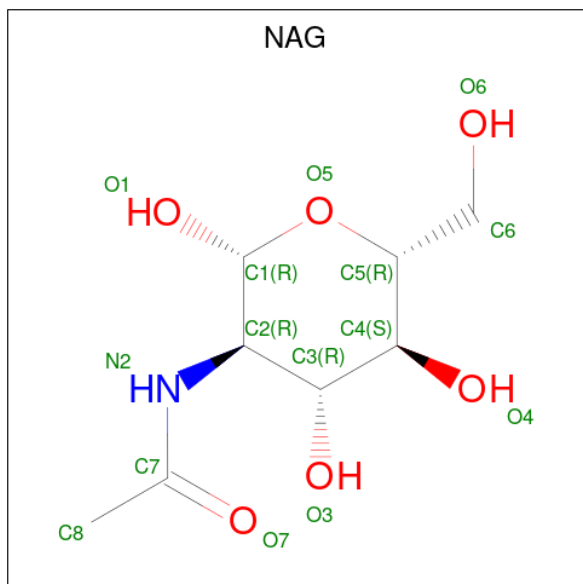
- Molecule 2 is a protein called DH650 Fab Heavy Chain.

Mol	Chain	Residues	Atoms					ZeroOcc	AltConf	Trace	
			Total	C	H	N	O				S
2	H	223	3352	1062	1669	290	324	7	0	0	0

- Molecule 3 is a protein called DH650 Fab Light Chain.

Mol	Chain	Residues	Atoms					ZeroOcc	AltConf	Trace	
			Total	C	H	N	O				S
3	L	219	3324	1057	1635	281	345	6	0	0	0

- Molecule 4 is 2-acetamido-2-deoxy-beta-D-glucopyranose (three-letter code: NAG) (formula:  $C_8H_{15}NO_6$ ).



Mol	Chain	Residues	Atoms					ZeroOcc	AltConf
4	G	1	Total	C	H	N	O	0	0
			27	8	13	1	5		
4	G	1	Total	C	H	N	O	0	0
			27	8	13	1	5		
4	G	1	Total	C	H	N	O	0	0
			27	8	13	1	5		
4	G	1	Total	C	H	N	O	0	0
			27	8	13	1	5		
4	G	1	Total	C	H	N	O	0	0
			27	8	13	1	5		
4	G	1	Total	C	H	N	O	0	0
			27	8	13	1	5		
4	G	1	Total	C	H	N	O	0	0
			27	8	13	1	5		
4	G	1	Total	C	H	N	O	0	0
			27	8	13	1	5		

- Molecule 5 is water.

Mol	Chain	Residues	Atoms		ZeroOcc	AltConf
5	G	3	Total	O	0	0
			3	3		
5	H	9	Total	O	0	0
			9	9		
5	L	9	Total	O	0	0
			9	9		



## 4 Data and refinement statistics

Property	Value	Source
Space group	P 21 21 2	Depositor
Cell constants a, b, c, $\alpha$ , $\beta$ , $\gamma$	138.52Å 122.10Å 53.40Å 90.00° 90.00° 90.00°	Depositor
Resolution (Å)	48.93 – 2.80 48.93 – 2.80	Depositor EDS
% Data completeness (in resolution range)	87.0 (48.93-2.80) 87.0 (48.93-2.80)	Depositor EDS
$R_{merge}$	(Not available)	Depositor
$R_{sym}$	(Not available)	Depositor
$\langle I/\sigma(I) \rangle$ <sup>1</sup>	1.45 (at 2.81Å)	Xtrriage
Refinement program	BUSTER 2.10.3	Depositor
R, $R_{free}$	0.227 , 0.284 0.231 , 0.297	Depositor DCC
$R_{free}$ test set	1009 reflections (5.03%)	wwPDB-VP
Wilson B-factor (Å <sup>2</sup> )	55.4	Xtrriage
Anisotropy	0.050	Xtrriage
Bulk solvent $k_{sol}$ (e/Å <sup>3</sup> ), $B_{sol}$ (Å <sup>2</sup> )	0.38 , 39.1	EDS
L-test for twinning <sup>2</sup>	$\langle  L  \rangle = 0.49$ , $\langle L^2 \rangle = 0.33$	Xtrriage
Estimated twinning fraction	No twinning to report.	Xtrriage
$F_o, F_c$ correlation	0.90	EDS
Total number of atoms	11296	wwPDB-VP
Average B, all atoms (Å <sup>2</sup> )	58.0	wwPDB-VP

Xtrriage's analysis on translational NCS is as follows: *The largest off-origin peak in the Patterson function is 3.90% of the height of the origin peak. No significant pseudotranslation is detected.*

<sup>1</sup>Intensities estimated from amplitudes.

<sup>2</sup>Theoretical values of  $\langle |L| \rangle$ ,  $\langle L^2 \rangle$  for acentric reflections are 0.5, 0.333 respectively for untwinned datasets, and 0.375, 0.2 for perfectly twinned datasets.

## 5 Model quality [i](#)

### 5.1 Standard geometry [i](#)

Bond lengths and bond angles in the following residue types are not validated in this section: NAG

The Z score for a bond length (or angle) is the number of standard deviations the observed value is removed from the expected value. A bond length (or angle) with  $|Z| > 5$  is considered an outlier worth inspection. RMSZ is the root-mean-square of all Z scores of the bond lengths (or angles).

Mol	Chain	Bond lengths		Bond angles	
		RMSZ	# Z  >5	RMSZ	# Z  >5
1	G	0.43	0/2232	0.58	0/3014
2	H	0.44	0/1723	0.63	0/2343
3	L	0.41	0/1725	0.62	0/2343
All	All	0.43	0/5680	0.61	0/7700

There are no bond length outliers.

There are no bond angle outliers.

There are no chirality outliers.

There are no planarity outliers.

### 5.2 Too-close contacts [i](#)

In the following table, the Non-H and H(model) columns list the number of non-hydrogen atoms and hydrogen atoms in the chain respectively. The H(added) column lists the number of hydrogen atoms added and optimized by MolProbity. The Clashes column lists the number of clashes within the asymmetric unit, whereas Symm-Clashes lists symmetry-related clashes.

Mol	Chain	Non-H	H(model)	H(added)	Clashes	Symm-Clashes
1	G	2193	2163	2163	8	0
2	H	1683	1669	1669	5	1
3	L	1689	1635	1635	3	0
4	G	126	117	117	1	0
5	G	3	0	0	0	0
5	H	9	0	0	0	0
5	L	9	0	0	0	0
All	All	5712	5584	5584	15	1

The all-atom clashscore is defined as the number of clashes found per 1000 atoms (including hydrogen atoms). The all-atom clashscore for this structure is 1.

The worst 5 of 15 close contacts within the same asymmetric unit are listed below, sorted by their clash magnitude.

Atom-1	Atom-2	Interatomic distance (Å)	Clash overlap (Å)
2:H:38:ARG:NH1	2:H:94:TYR:OH	2.30	0.63
1:G:208:VAL:O	1:G:208:VAL:HG12	2.02	0.60
1:G:472:MET:HE2	1:G:476:TRP:HE1	1.70	0.55
3:L:190:ALA:O	3:L:194:LYS:HG2	2.08	0.53
2:H:97:THR:OG1	2:H:108:PHE:HB3	2.11	0.51

All (1) symmetry-related close contacts are listed below. The label for Atom-2 includes the symmetry operator and encoded unit-cell translations to be applied.

Atom-1	Atom-2	Interatomic distance (Å)	Clash overlap (Å)
2:H:87:ARG:HH11	2:H:87:ARG:HH11[2_555]	1.31	0.29

## 5.3 Torsion angles [i](#)

### 5.3.1 Protein backbone [i](#)

In the following table, the Percentiles column shows the percent Ramachandran outliers of the chain as a percentile score with respect to all X-ray entries followed by that with respect to entries of similar resolution.

The Analysed column shows the number of residues for which the backbone conformation was analysed, and the total number of residues.

Mol	Chain	Analysed	Favoured	Allowed	Outliers	Percentiles	
1	G	267/357 (75%)	248 (93%)	18 (7%)	1 (0%)	34	66
2	H	221/226 (98%)	204 (92%)	16 (7%)	1 (0%)	29	61
3	L	217/220 (99%)	208 (96%)	9 (4%)	0	100	100
All	All	705/803 (88%)	660 (94%)	43 (6%)	2 (0%)	41	72

All (2) Ramachandran outliers are listed below:

Mol	Chain	Res	Type
1	G	460	ASN
2	H	8	GLY



### 5.3.2 Protein sidechains [i](#)

In the following table, the Percentiles column shows the percent sidechain outliers of the chain as a percentile score with respect to all X-ray entries followed by that with respect to entries of similar resolution.

The Analysed column shows the number of residues for which the sidechain conformation was analysed, and the total number of residues.

Mol	Chain	Analysed	Rotameric	Outliers	Percentiles	
1	G	252/314 (80%)	230 (91%)	22 (9%)	10	30
2	H	187/190 (98%)	175 (94%)	12 (6%)	17	45
3	L	193/194 (100%)	181 (94%)	12 (6%)	18	47
All	All	632/698 (90%)	586 (93%)	46 (7%)	14	38

5 of 46 residues with a non-rotameric sidechain are listed below:

Mol	Chain	Res	Type
2	H	128	SER
3	L	9	LEU
2	H	137	LYS
2	H	158	VAL
3	L	27	GLN

Sometimes sidechains can be flipped to improve hydrogen bonding and reduce clashes. There are no such sidechains identified.

### 5.3.3 RNA [i](#)

There are no RNA molecules in this entry.

## 5.4 Non-standard residues in protein, DNA, RNA chains [i](#)

There are no non-standard protein/DNA/RNA residues in this entry.

## 5.5 Carbohydrates [i](#)

There are no monosaccharides in this entry.

## 5.6 Ligand geometry

9 ligands are modelled in this entry.

In the following table, the Counts columns list the number of bonds (or angles) for which Mogul statistics could be retrieved, the number of bonds (or angles) that are observed in the model and the number of bonds (or angles) that are defined in the Chemical Component Dictionary. The Link column lists molecule types, if any, to which the group is linked. The Z score for a bond length (or angle) is the number of standard deviations the observed value is removed from the expected value. A bond length (or angle) with  $|Z| > 2$  is considered an outlier worth inspection. RMSZ is the root-mean-square of all Z scores of the bond lengths (or angles).

Mol	Type	Chain	Res	Link	Bond lengths			Bond angles		
					Counts	RMSZ	# Z  > 2	Counts	RMSZ	# Z  > 2
4	NAG	G	508	1	14,14,15	0.52	0	17,19,21	1.62	3 (17%)
4	NAG	G	507	1	14,14,15	0.29	0	17,19,21	0.66	0
4	NAG	G	505	1	14,14,15	0.33	0	17,19,21	0.65	0
4	NAG	G	503	1	14,14,15	0.34	0	17,19,21	0.99	1 (5%)
4	NAG	G	504	1	14,14,15	0.26	0	17,19,21	1.07	1 (5%)
4	NAG	G	501	1	14,14,15	0.21	0	17,19,21	0.76	1 (5%)
4	NAG	G	502	1	14,14,15	0.29	0	17,19,21	1.81	4 (23%)
4	NAG	G	506	1	14,14,15	0.36	0	17,19,21	0.92	1 (5%)
4	NAG	G	509	1	14,14,15	0.26	0	17,19,21	0.89	1 (5%)

In the following table, the Chirals column lists the number of chiral outliers, the number of chiral centers analysed, the number of these observed in the model and the number defined in the Chemical Component Dictionary. Similar counts are reported in the Torsion and Rings columns. '-' means no outliers of that kind were identified.

Mol	Type	Chain	Res	Link	Chirals	Torsions	Rings
4	NAG	G	508	1	-	1/6/23/26	0/1/1/1
4	NAG	G	507	1	-	0/6/23/26	0/1/1/1
4	NAG	G	505	1	-	2/6/23/26	0/1/1/1
4	NAG	G	503	1	-	2/6/23/26	0/1/1/1
4	NAG	G	504	1	-	0/6/23/26	0/1/1/1
4	NAG	G	501	1	-	0/6/23/26	0/1/1/1
4	NAG	G	502	1	-	1/6/23/26	0/1/1/1
4	NAG	G	506	1	-	4/6/23/26	0/1/1/1
4	NAG	G	509	1	-	0/6/23/26	0/1/1/1

There are no bond length outliers.

The worst 5 of 12 bond angle outliers are listed below:

Mol	Chain	Res	Type	Atoms	Z	Observed(°)	Ideal(°)
4	G	502	NAG	O5-C1-C2	-4.69	103.88	111.29
4	G	508	NAG	C1-O5-C5	4.54	118.34	112.19
4	G	502	NAG	C1-C2-N2	4.08	117.46	110.49
4	G	508	NAG	C1-C2-N2	-3.92	103.78	110.49
4	G	504	NAG	C1-O5-C5	3.41	116.81	112.19

There are no chirality outliers.

5 of 10 torsion outliers are listed below:

Mol	Chain	Res	Type	Atoms
4	G	506	NAG	O5-C5-C6-O6
4	G	505	NAG	O5-C5-C6-O6
4	G	503	NAG	O5-C5-C6-O6
4	G	508	NAG	O5-C5-C6-O6
4	G	505	NAG	C4-C5-C6-O6

There are no ring outliers.

1 monomer is involved in 1 short contact:

Mol	Chain	Res	Type	Clashes	Symm-Clashes
4	G	503	NAG	1	0

## 5.7 Other polymers [i](#)

There are no such residues in this entry.

## 5.8 Polymer linkage issues [i](#)

There are no chain breaks in this entry.

## 6 Fit of model and data [i](#)

### 6.1 Protein, DNA and RNA chains [i](#)

In the following table, the column labelled ‘#RSRZ > 2’ contains the number (and percentage) of RSRZ outliers, followed by percent RSRZ outliers for the chain as percentile scores relative to all X-ray entries and entries of similar resolution. The OWAB column contains the minimum, median, 95<sup>th</sup> percentile and maximum values of the occupancy-weighted average B-factor per residue. The column labelled ‘Q < 0.9’ lists the number of (and percentage) of residues with an average occupancy less than 0.9.

Mol	Chain	Analysed	<RSRZ>	#RSRZ>2	OWAB(Å <sup>2</sup> )	Q<0.9
1	G	279/357 (78%)	0.63	23 (8%) 11 6	32, 56, 90, 99	0
2	H	223/226 (98%)	0.40	6 (2%) 54 44	33, 47, 78, 90	0
3	L	219/220 (99%)	0.26	2 (0%) 84 80	33, 47, 62, 71	0
All	All	721/803 (89%)	0.44	31 (4%) 35 25	32, 50, 82, 99	0

The worst 5 of 31 RSRZ outliers are listed below:

Mol	Chain	Res	Type	RSRZ
1	G	120	VAL	6.2
1	G	119	CYS	5.5
2	H	138	SER	4.3
1	G	379	GLY	3.9
1	G	210	PHE	3.7

### 6.2 Non-standard residues in protein, DNA, RNA chains [i](#)

There are no non-standard protein/DNA/RNA residues in this entry.

### 6.3 Carbohydrates [i](#)

There are no monosaccharides in this entry.

### 6.4 Ligands [i](#)

In the following table, the Atoms column lists the number of modelled atoms in the group and the number defined in the chemical component dictionary. The B-factors column lists the minimum, median, 95<sup>th</sup> percentile and maximum values of B factors of atoms in the group. The column labelled ‘Q < 0.9’ lists the number of atoms with occupancy less than 0.9.

Mol	Type	Chain	Res	Atoms	RSCC	RSR	B-factors( $\text{\AA}^2$ )	Q<0.9
4	NAG	G	503	14/15	0.62	0.33	81,83,99,99	0
4	NAG	G	506	14/15	0.80	0.23	70,73,88,88	0
4	NAG	G	508	14/15	0.84	0.15	73,74,89,89	0
4	NAG	G	505	14/15	0.85	0.22	60,61,73,73	0
4	NAG	G	504	14/15	0.88	0.21	54,55,66,66	0
4	NAG	G	509	14/15	0.88	0.23	66,67,81,81	0
4	NAG	G	507	14/15	0.90	0.26	68,69,83,84	0
4	NAG	G	501	14/15	0.91	0.21	53,54,64,65	0
4	NAG	G	502	14/15	0.92	0.21	54,55,66,66	0

## 6.5 Other polymers [i](#)

There are no such residues in this entry.