



Full wwPDB X-ray Structure Validation Report ⓘ

May 29, 2020 – 12:32 pm BST

PDB ID : 1XA7
Title : Crystal structure of the benzylpenicillin-acylated BlaR1 sensor domain from *Staphylococcus aureus*
Authors : Wilke, M.S.; Hills, T.L.; Zhang, H.Z.; Chambers, H.F.; Strynadka, N.C.
Deposited on : 2004-08-25
Resolution : 2.40 Å(reported)

This is a Full wwPDB X-ray Structure Validation Report for a publicly released PDB entry.

We welcome your comments at validation@mail.wwpdb.org

A user guide is available at

<https://www.wwpdb.org/validation/2017/XrayValidationReportHelp>

with specific help available everywhere you see the ⓘ symbol.

The following versions of software and data (see [references ⓘ](#)) were used in the production of this report:

MolProbity : 4.02b-467
Mogul : 1.8.5 (274361), CSD as541be (2020)
Xtriage (Phenix) : 1.13
EDS : 2.11
buster-report : 1.1.7 (2018)
Percentile statistics : 20191225.v01 (using entries in the PDB archive December 25th 2019)
Refmac : 5.8.0158
CCP4 : 7.0.044 (Gargrove)
Ideal geometry (proteins) : Engh & Huber (2001)
Ideal geometry (DNA, RNA) : Parkinson et al. (1996)
Validation Pipeline (wwPDB-VP) : 2.11

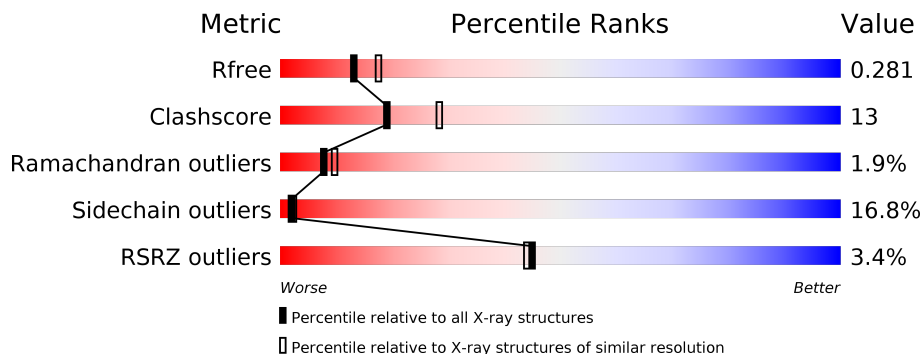
1 Overall quality at a glance

The following experimental techniques were used to determine the structure:

X-RAY DIFFRACTION

The reported resolution of this entry is 2.40 Å.

Percentile scores (ranging between 0-100) for global validation metrics of the entry are shown in the following graphic. The table shows the number of entries on which the scores are based.



Metric	Whole archive (#Entries)	Similar resolution (#Entries, resolution range(Å))
R_{free}	130704	3907 (2.40-2.40)
Clashscore	141614	4398 (2.40-2.40)
Ramachandran outliers	138981	4318 (2.40-2.40)
Sidechain outliers	138945	4319 (2.40-2.40)
RSRZ outliers	127900	3811 (2.40-2.40)

The table below summarises the geometric issues observed across the polymeric chains and their fit to the electron density. The red, orange, yellow and green segments on the lower bar indicate the fraction of residues that contain outliers for ≥ 3 , 2, 1 and 0 types of geometric quality criteria respectively. A grey segment represents the fraction of residues that are not modelled. The numeric value for each fraction is indicated below the corresponding segment, with a dot representing fractions $\leq 5\%$. The upper red bar (where present) indicates the fraction of residues that have poor fit to the electron density. The numeric value is given above the bar.

Mol	Chain	Length	Quality of chain
1	A	255	
1	B	255	

2 Entry composition [i](#)

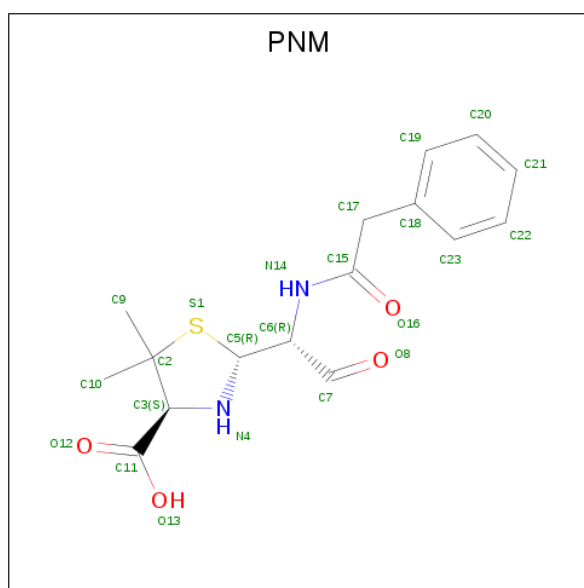
There are 3 unique types of molecules in this entry. The entry contains 4106 atoms, of which 0 are hydrogens and 0 are deuteriums.

In the tables below, the ZeroOcc column contains the number of atoms modelled with zero occupancy, the AltConf column contains the number of residues with at least one atom in alternate conformation and the Trace column contains the number of residues modelled with at most 2 atoms.

- Molecule 1 is a protein called Regulatory protein BlaR1.

Mol	Chain	Residues	Atoms					ZeroOcc	AltConf	Trace
			Total	C	N	O	Se			
1	A	242	Total 2013	C 1288	N 339	O 377	Se 9	0	0	0
1	B	240	Total 2006	C 1285	N 339	O 373	Se 9	0	0	0

- Molecule 2 is OPEN FORM - PENICILLIN G (three-letter code: PNM) (formula: C₁₆H₂₀N₂O₄S).



Mol	Chain	Residues	Atoms					ZeroOcc	AltConf
			Total	C	N	O	S		
2	A	1	Total 23	C 16	N 2	O 4	S 1	0	0
2	B	1	Total 23	C 16	N 2	O 4	S 1	0	0

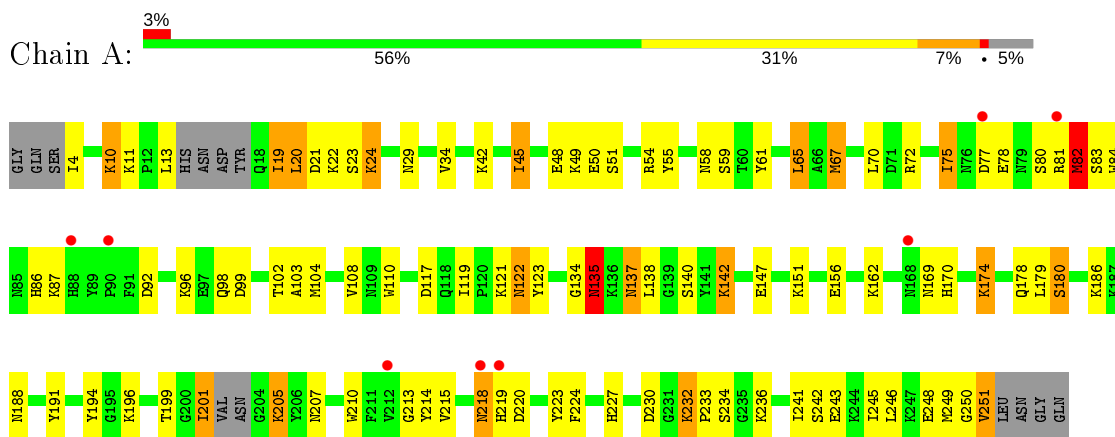
- Molecule 3 is water.

Mol	Chain	Residues	Atoms		ZeroOcc	AltConf
3	A	22	Total 22	O 22	0	0
3	B	19	Total 19	O 19	0	0

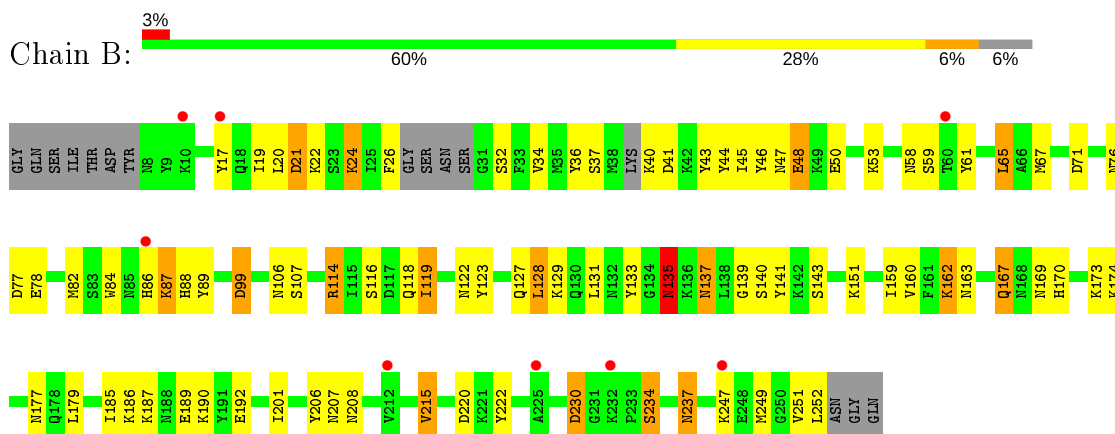
3 Residue-property plots [i](#)

These plots are drawn for all protein, RNA and DNA chains in the entry. The first graphic for a chain summarises the proportions of the various outlier classes displayed in the second graphic. The second graphic shows the sequence view annotated by issues in geometry and electron density. Residues are color-coded according to the number of geometric quality criteria for which they contain at least one outlier: green = 0, yellow = 1, orange = 2 and red = 3 or more. A red dot above a residue indicates a poor fit to the electron density ($RSRZ > 2$). Stretches of 2 or more consecutive residues without any outlier are shown as a green connector. Residues present in the sample, but not in the model, are shown in grey.

- Molecule 1: Regulatory protein BlaR1



- Molecule 1: Regulatory protein BlaR1



4 Data and refinement statistics

Property	Value	Source
Space group	P 43 21 2	Depositor
Cell constants a, b, c, α , β , γ	88.39Å 88.39Å 125.06Å 90.00° 90.00° 90.00°	Depositor
Resolution (Å)	30.00 – 2.40 30.32 – 2.00	Depositor EDS
% Data completeness (in resolution range)	99.1 (30.00-2.40) 99.1 (30.32-2.00)	Depositor EDS
R_{merge}	(Not available)	Depositor
R_{sym}	(Not available)	Depositor
$\langle I/\sigma(I) \rangle$ ¹	2.87 (at 2.00Å)	Xtrriage
Refinement program	REFMAC 5.1.24	Depositor
R, R_{free}	0.220 , 0.275 0.225 , 0.281	Depositor DCC
R_{free} test set	1678 reflections (4.96%)	wwPDB-VP
Wilson B-factor (Å ²)	34.8	Xtrriage
Anisotropy	0.158	Xtrriage
Bulk solvent k_{sol} (e/Å ³), B_{sol} (Å ²)	0.32 , 46.4	EDS
L-test for twinning ²	$\langle L \rangle = 0.43$, $\langle L^2 \rangle = 0.26$	Xtrriage
Estimated twinning fraction	No twinning to report.	Xtrriage
F_o, F_c correlation	0.93	EDS
Total number of atoms	4106	wwPDB-VP
Average B, all atoms (Å ²)	46.0	wwPDB-VP

Xtrriage's analysis on translational NCS is as follows: *The largest off-origin peak in the Patterson function is 3.45% of the height of the origin peak. No significant pseudotranslation is detected.*

¹Intensities estimated from amplitudes.

²Theoretical values of $\langle |L| \rangle$, $\langle L^2 \rangle$ for acentric reflections are 0.5, 0.333 respectively for untwinned datasets, and 0.375, 0.2 for perfectly twinned datasets.

5 Model quality i

5.1 Standard geometry i

Bond lengths and bond angles in the following residue types are not validated in this section: PNM

The Z score for a bond length (or angle) is the number of standard deviations the observed value is removed from the expected value. A bond length (or angle) with $|Z| > 5$ is considered an outlier worth inspection. RMSZ is the root-mean-square of all Z scores of the bond lengths (or angles).

Mol	Chain	Bond lengths		Bond angles	
		RMSZ	# Z >5	RMSZ	# Z >5
1	A	0.93	4/2052 (0.2%)	0.96	6/2738 (0.2%)
1	B	0.90	2/2046 (0.1%)	0.92	8/2732 (0.3%)
All	All	0.92	6/4098 (0.1%)	0.94	14/5470 (0.3%)

All (6) bond length outliers are listed below:

Mol	Chain	Res	Type	Atoms	Z	Observed(Å)	Ideal(Å)
1	B	59	SER	C-O	10.71	1.43	1.23
1	A	59	SER	C-O	7.79	1.38	1.23
1	B	249	MSE	CG-SE	-5.85	1.75	1.95
1	A	223	TYR	CD2-CE2	-5.44	1.31	1.39
1	A	210	TRP	CB-CG	-5.37	1.40	1.50
1	A	67	MSE	SE-CE	-5.03	1.65	1.95

All (14) bond angle outliers are listed below:

Mol	Chain	Res	Type	Atoms	Z	Observed(°)	Ideal(°)
1	A	99	ASP	CB-CG-OD2	8.42	125.88	118.30
1	B	220	ASP	CB-CG-OD2	7.86	125.38	118.30
1	A	21	ASP	CB-CG-OD2	7.25	124.83	118.30
1	A	230	ASP	CB-CG-OD2	7.19	124.77	118.30
1	A	220	ASP	CB-CG-OD2	6.56	124.20	118.30
1	B	71	ASP	CB-CG-OD2	6.53	124.18	118.30
1	B	21	ASP	CB-CG-OD2	5.93	123.64	118.30
1	B	230	ASP	CB-CG-OD2	5.89	123.60	118.30
1	B	99	ASP	CB-CG-OD2	5.82	123.54	118.30
1	B	77	ASP	CB-CG-OD2	5.45	123.21	118.30
1	A	92	ASP	CB-CG-OD2	5.44	123.20	118.30
1	B	41	ASP	CB-CG-OD2	5.44	123.20	118.30
1	A	117	ASP	CB-CG-OD2	5.31	123.08	118.30

Continued on next page...

Continued from previous page...

Mol	Chain	Res	Type	Atoms	Z	Observed(°)	Ideal(°)
1	B	114	ARG	NE-CZ-NH1	5.02	122.81	120.30

There are no chirality outliers.

There are no planarity outliers.

5.2 Too-close contacts [i](#)

In the following table, the Non-H and H(model) columns list the number of non-hydrogen atoms and hydrogen atoms in the chain respectively. The H(added) column lists the number of hydrogen atoms added and optimized by MolProbity. The Clashes column lists the number of clashes within the asymmetric unit, whereas Symm-Clashes lists symmetry related clashes.

Mol	Chain	Non-H	H(model)	H(added)	Clashes	Symm-Clashes
1	A	2013	0	1967	60	0
1	B	2006	0	1956	44	0
2	A	23	0	18	1	0
2	B	23	0	18	0	0
3	A	22	0	0	3	0
3	B	19	0	0	1	0
All	All	4106	0	3959	104	0

The all-atom clashscore is defined as the number of clashes found per 1000 atoms (including hydrogen atoms). The all-atom clashscore for this structure is 13.

All (104) close contacts within the same asymmetric unit are listed below, sorted by their clash magnitude.

Atom-1	Atom-2	Interatomic distance (Å)	Clash overlap (Å)
1:A:98:GLN:HE22	1:A:102:THR:HG22	1.29	0.96
1:A:98:GLN:HE22	1:A:102:THR:CG2	1.80	0.95
1:A:67:MSE:HE3	1:A:179:LEU:HD22	1.50	0.93
1:A:82:MSE:SE	3:A:420:HOH:O	2.36	0.92
1:A:98:GLN:NE2	1:A:102:THR:HG22	1.90	0.87
1:A:98:GLN:NE2	1:A:102:THR:CG2	2.41	0.84
1:A:174:LYS:HD3	1:A:178:GLN:HE21	1.46	0.81
1:B:190:LYS:NZ	1:B:252:LEU:O	2.15	0.76
1:B:22:LYS:HA	1:B:24:LYS:HZ2	1.49	0.75
1:A:242:SER:O	1:A:246:LEU:HD23	1.91	0.70
1:A:55:TYR:CD2	1:A:227:HIS:CE1	2.82	0.68
1:B:187:LYS:NZ	1:B:192:GLU:OE2	2.25	0.67
1:A:180:SER:OG	1:A:214:TYR:OH	2.12	0.67

Continued on next page...

Continued from previous page...

Atom-1	Atom-2	Interatomic distance (Å)	Clash overlap (Å)
1:A:137:ASN:C	1:A:137:ASN:HD22	1.97	0.67
1:A:29:ASN:HD22	1:A:232:LYS:H	1.43	0.67
1:A:45:ILE:HD11	1:A:48:GLU:HA	1.79	0.65
1:A:137:ASN:ND2	1:A:138:LEU:O	2.31	0.63
1:A:67:MSE:CE	1:A:179:LEU:HD22	2.28	0.63
1:A:98:GLN:HG2	1:A:110:TRP:CZ2	2.34	0.63
1:B:24:LYS:H	1:B:24:LYS:HD3	1.64	0.62
1:A:218:ASN:HD22	1:A:218:ASN:H	1.48	0.62
1:A:135:ASN:HB3	1:A:137:ASN:H	1.64	0.62
1:A:98:GLN:HE22	1:A:102:THR:HG21	1.64	0.62
1:A:201:ILE:HA	1:A:205:LYS:O	2.00	0.61
1:B:67:MSE:HE2	1:B:179:LEU:HD22	1.84	0.60
1:B:22:LYS:HA	1:B:24:LYS:NZ	2.16	0.60
1:B:84:TRP:CZ2	1:B:86:HIS:HA	2.38	0.59
1:B:36:TYR:CE2	1:B:162:LYS:HD2	2.38	0.59
1:B:37:SER:OG	1:B:40:LYS:HB2	2.02	0.59
1:A:29:ASN:ND2	1:A:232:LYS:H	2.01	0.58
1:B:67:MSE:CE	1:B:179:LEU:HD22	2.32	0.58
1:B:34:VAL:HG22	1:B:45:ILE:HG23	1.85	0.57
1:A:70:LEU:HD23	1:A:75:ILE:HG12	1.87	0.57
1:B:123:TYR:O	1:B:127:GLN:HG2	2.05	0.56
1:B:67:MSE:CE	1:B:179:LEU:CD2	2.83	0.56
1:A:84:TRP:CE2	1:A:86:HIS:HA	2.41	0.56
1:A:20:LEU:HD21	1:A:249:MSE:CE	2.36	0.55
1:A:55:TYR:CE2	1:A:227:HIS:CE1	2.94	0.55
1:B:163:ASN:OD1	1:B:167:GLN:OE1	2.25	0.54
1:A:188:ASN:ND2	1:A:191:TYR:CE1	2.72	0.54
1:A:142:LYS:CE	1:A:142:LYS:HA	2.38	0.53
1:B:207:ASN:ND2	1:B:208:ASN:HB2	2.24	0.53
1:A:98:GLN:NE2	1:A:102:THR:HG21	2.20	0.53
1:A:174:LYS:HD3	1:A:178:GLN:NE2	2.19	0.53
1:A:19:ILE:HB	1:A:45:ILE:O	2.09	0.53
1:B:159:ILE:HD13	1:B:159:ILE:N	2.24	0.53
1:B:185:ILE:HG22	1:B:186:LYS:HG3	1.91	0.53
1:A:10:LYS:H	1:A:10:LYS:CD	2.23	0.52
1:A:34:VAL:O	1:A:224:PHE:HA	2.10	0.52
1:A:54:ARG:HB3	1:A:151:LYS:HB3	1.92	0.51
1:A:10:LYS:HD2	1:A:10:LYS:H	1.75	0.51
1:A:241:ILE:O	1:A:245:ILE:HG12	2.10	0.50
1:A:134:GLY:HA2	1:A:156:GLU:OE2	2.12	0.50
1:A:194:TYR:O	1:A:213:GLY:HA3	2.12	0.50

Continued on next page...

Continued from previous page...

Atom-1	Atom-2	Interatomic distance (Å)	Clash overlap (Å)
1:B:46:TYR:O	1:B:47:ASN:HB2	2.12	0.49
1:B:106:ASN:ND2	3:B:401:HOH:O	2.25	0.49
1:A:98:GLN:HG2	1:A:110:TRP:CH2	2.47	0.49
1:B:67:MSE:HE3	1:B:179:LEU:CD2	2.42	0.49
1:A:103:ALA:HA	1:A:108:VAL:HG23	1.95	0.48
1:A:199:THR:HB	2:A:301:PNM:HC3	1.96	0.48
1:A:137:ASN:ND2	1:A:137:ASN:C	2.67	0.47
1:B:45:ILE:HG21	1:B:48:GLU:HB2	1.95	0.47
1:B:61:TYR:CD2	1:B:65:LEU:HD22	2.50	0.47
1:B:43:TYR:HB3	1:B:45:ILE:HD11	1.95	0.47
1:B:234:SER:HB3	1:B:237:ASN:H	1.80	0.46
1:A:207:ASN:HA	1:A:233:PRO:HG3	1.96	0.46
1:A:22:LYS:HA	1:A:24:LYS:HE3	1.96	0.46
1:A:67:MSE:HE1	1:A:179:LEU:HB2	1.98	0.46
1:B:206:TYR:CD2	1:B:206:TYR:N	2.84	0.45
1:B:137:ASN:HD22	1:B:139:GLY:H	1.64	0.45
1:A:142:LYS:NZ	1:A:142:LYS:HA	2.31	0.45
1:A:232:LYS:HA	1:A:232:LYS:HD2	1.87	0.45
1:B:67:MSE:HE3	1:B:179:LEU:HD23	1.98	0.45
1:B:163:ASN:OD1	1:B:167:GLN:CD	2.56	0.44
1:A:45:ILE:HD11	1:A:48:GLU:CA	2.46	0.44
1:A:121:LYS:NZ	3:A:403:HOH:O	2.49	0.44
1:A:250:GLY:O	1:A:251:VAL:O	2.35	0.44
1:A:61:TYR:CD2	1:A:65:LEU:HD22	2.53	0.44
1:A:77:ASP:HB2	1:A:174:LYS:HZ3	1.84	0.43
1:B:140:SER:O	1:B:141:TYR:HB3	2.17	0.43
1:B:135:ASN:HB2	1:B:151:LYS:H	1.84	0.43
1:A:186:LYS:NZ	1:A:243:GLU:OE2	2.51	0.43
1:B:116:SER:HA	1:B:119:ILE:HG13	1.99	0.43
1:B:114:ARG:O	1:B:118:GLN:NE2	2.52	0.43
1:A:142:LYS:HA	1:A:142:LYS:HE2	1.99	0.43
1:B:206:TYR:N	1:B:206:TYR:HD2	2.17	0.43
1:A:82:MSE:CG	3:A:420:HOH:O	2.67	0.43
1:B:87:LYS:O	1:B:89:TYR:N	2.52	0.42
1:B:20:LEU:HD11	1:B:44:TYR:HB3	2.02	0.42
1:B:177:ASN:HD22	1:B:177:ASN:N	2.18	0.42
1:B:131:LEU:O	1:B:160:VAL:HG13	2.20	0.42
1:B:128:LEU:HG	1:B:133:TYR:HB3	2.02	0.42
1:B:207:ASN:HD22	1:B:208:ASN:HB2	1.85	0.41
1:B:21:ASP:O	1:B:24:LYS:HE3	2.20	0.41
1:B:215:VAL:HG13	1:B:222:TYR:HB2	2.02	0.41

Continued on next page...

Continued from previous page...

Atom-1	Atom-2	Interatomic distance (Å)	Clash overlap (Å)
1:A:98:GLN:CG	1:A:110:TRP:CZ2	3.02	0.41
1:A:104:MSE:SE	1:A:196:LYS:HD3	2.70	0.41
1:A:122:ASN:HD22	1:A:123:TYR:N	2.19	0.41
1:B:82:MSE:HB3	1:B:114:ARG:NH2	2.35	0.41
1:B:135:ASN:HB3	1:B:137:ASN:H	1.85	0.41
1:A:72:ARG:HD3	1:A:119:ILE:HG12	2.01	0.41
1:A:135:ASN:OD1	1:A:137:ASN:HB3	2.20	0.40
1:A:45:ILE:HD11	1:A:48:GLU:N	2.37	0.40
1:B:251:VAL:HG12	1:B:251:VAL:O	2.21	0.40

There are no symmetry-related clashes.

5.3 Torsion angles [i](#)

5.3.1 Protein backbone [i](#)

In the following table, the Percentiles column shows the percent Ramachandran outliers of the chain as a percentile score with respect to all X-ray entries followed by that with respect to entries of similar resolution.

The Analysed column shows the number of residues for which the backbone conformation was analysed, and the total number of residues.

Mol	Chain	Analysed	Favoured	Allowed	Outliers	Percentiles	
1	A	236/255 (92%)	211 (89%)	19 (8%)	6 (2%)	5	6
1	B	234/255 (92%)	214 (92%)	17 (7%)	3 (1%)	12	17
All	All	470/510 (92%)	425 (90%)	36 (8%)	9 (2%)	8	10

All (9) Ramachandran outliers are listed below:

Mol	Chain	Res	Type
1	A	135	ASN
1	A	23	SER
1	B	58	ASN
1	A	51	SER
1	A	58	ASN
1	A	82	MSE
1	B	88	HIS
1	A	147	GLU
1	B	135	ASN

5.3.2 Protein sidechains [i](#)

In the following table, the Percentiles column shows the percent sidechain outliers of the chain as a percentile score with respect to all X-ray entries followed by that with respect to entries of similar resolution.

The Analysed column shows the number of residues for which the sidechain conformation was analysed, and the total number of residues.

Mol	Chain	Analysed	Rotameric	Outliers	Percentiles	
1	A	221/223 (99%)	181 (82%)	40 (18%)	1	2
1	B	220/223 (99%)	186 (84%)	34 (16%)	2	3
All	All	441/446 (99%)	367 (83%)	74 (17%)	2	2

All (74) residues with a non-rotameric sidechain are listed below:

Mol	Chain	Res	Type
1	A	4	ILE
1	A	10	LYS
1	A	11	LYS
1	A	13	LEU
1	A	19	ILE
1	A	20	LEU
1	A	24	LYS
1	A	42	LYS
1	A	45	ILE
1	A	49	LYS
1	A	50	GLU
1	A	65	LEU
1	A	75	ILE
1	A	78	GLU
1	A	80	SER
1	A	81	ARG
1	A	82	MSE
1	A	83	SER
1	A	87	LYS
1	A	96	LYS
1	A	122	ASN
1	A	135	ASN
1	A	137	ASN
1	A	140	SER
1	A	142	LYS
1	A	162	LYS
1	A	169	ASN

Continued on next page...

Continued from previous page...

Mol	Chain	Res	Type
1	A	170	HIS
1	A	174	LYS
1	A	180	SER
1	A	201	ILE
1	A	205	LYS
1	A	215	VAL
1	A	218	ASN
1	A	219	HIS
1	A	232	LYS
1	A	234	SER
1	A	236	LYS
1	A	248	GLU
1	A	251	VAL
1	B	17	TYR
1	B	19	ILE
1	B	24	LYS
1	B	26	PHE
1	B	32	SER
1	B	48	GLU
1	B	50	GLU
1	B	53	LYS
1	B	65	LEU
1	B	76	ASN
1	B	78	GLU
1	B	87	LYS
1	B	99	ASP
1	B	107	SER
1	B	119	ILE
1	B	122	ASN
1	B	128	LEU
1	B	129	LYS
1	B	135	ASN
1	B	137	ASN
1	B	143	SER
1	B	162	LYS
1	B	167	GLN
1	B	169	ASN
1	B	170	HIS
1	B	173	LYS
1	B	174	LYS
1	B	189	GLU
1	B	201	ILE

Continued on next page...

Continued from previous page...

Mol	Chain	Res	Type
1	B	215	VAL
1	B	230	ASP
1	B	234	SER
1	B	237	ASN
1	B	247	LYS

Some sidechains can be flipped to improve hydrogen bonding and reduce clashes. All (13) such sidechains are listed below:

Mol	Chain	Res	Type
1	A	29	ASN
1	A	98	GLN
1	A	122	ASN
1	A	137	ASN
1	A	154	ASN
1	A	167	GLN
1	A	178	GLN
1	A	218	ASN
1	B	76	ASN
1	B	105	GLN
1	B	135	ASN
1	B	137	ASN
1	B	177	ASN

5.3.3 RNA [i](#)

There are no RNA molecules in this entry.

5.4 Non-standard residues in protein, DNA, RNA chains [i](#)

There are no non-standard protein/DNA/RNA residues in this entry.

5.5 Carbohydrates [i](#)

There are no carbohydrates in this entry.

5.6 Ligand geometry [i](#)

2 ligands are modelled in this entry.

In the following table, the Counts columns list the number of bonds (or angles) for which Mogul statistics could be retrieved, the number of bonds (or angles) that are observed in the model and the number of bonds (or angles) that are defined in the Chemical Component Dictionary. The Link column lists molecule types, if any, to which the group is linked. The Z score for a bond length (or angle) is the number of standard deviations the observed value is removed from the expected value. A bond length (or angle) with $|Z| > 2$ is considered an outlier worth inspection. RMSZ is the root-mean-square of all Z scores of the bond lengths (or angles).

Mol	Type	Chain	Res	Link	Bond lengths			Bond angles		
					Counts	RMSZ	# Z > 2	Counts	RMSZ	# Z > 2
2	PNM	A	301	1	17,24,24	1.41	3 (17%)	22,34,34	1.31	5 (22%)
2	PNM	B	301	1	17,24,24	1.31	2 (11%)	22,34,34	1.48	5 (22%)

In the following table, the Chirals column lists the number of chiral outliers, the number of chiral centers analysed, the number of these observed in the model and the number defined in the Chemical Component Dictionary. Similar counts are reported in the Torsion and Rings columns. '-' means no outliers of that kind were identified.

Mol	Type	Chain	Res	Link	Chirals	Torsions	Rings
2	PNM	A	301	1	-	0/8/33/33	0/2/2/2
2	PNM	B	301	1	-	0/8/33/33	0/2/2/2

All (5) bond length outliers are listed below:

Mol	Chain	Res	Type	Atoms	Z	Observed(Å)	Ideal(Å)
2	A	301	PNM	C2-S1	-3.72	1.77	1.85
2	B	301	PNM	C2-S1	-3.58	1.78	1.85
2	B	301	PNM	C5-S1	-3.27	1.76	1.84
2	A	301	PNM	C3-N4	-2.46	1.42	1.46
2	A	301	PNM	C5-S1	-2.09	1.79	1.84

All (10) bond angle outliers are listed below:

Mol	Chain	Res	Type	Atoms	Z	Observed(°)	Ideal(°)
2	B	301	PNM	C2-S1-C5	2.88	100.15	93.99
2	B	301	PNM	C6-N14-C15	-2.86	120.07	123.13
2	A	301	PNM	C6-N14-C15	-2.64	120.30	123.13
2	A	301	PNM	C17-C15-N14	2.23	119.47	115.88
2	A	301	PNM	C2-S1-C5	2.20	98.71	93.99
2	A	301	PNM	O16-C15-N14	-2.18	119.28	122.95
2	B	301	PNM	C18-C17-C15	-2.14	106.23	112.57
2	B	301	PNM	C9-C2-S1	2.11	112.75	109.21
2	A	301	PNM	C5-C6-N14	2.08	114.52	109.98
2	B	301	PNM	C17-C15-N14	2.06	119.19	115.88

There are no chirality outliers.

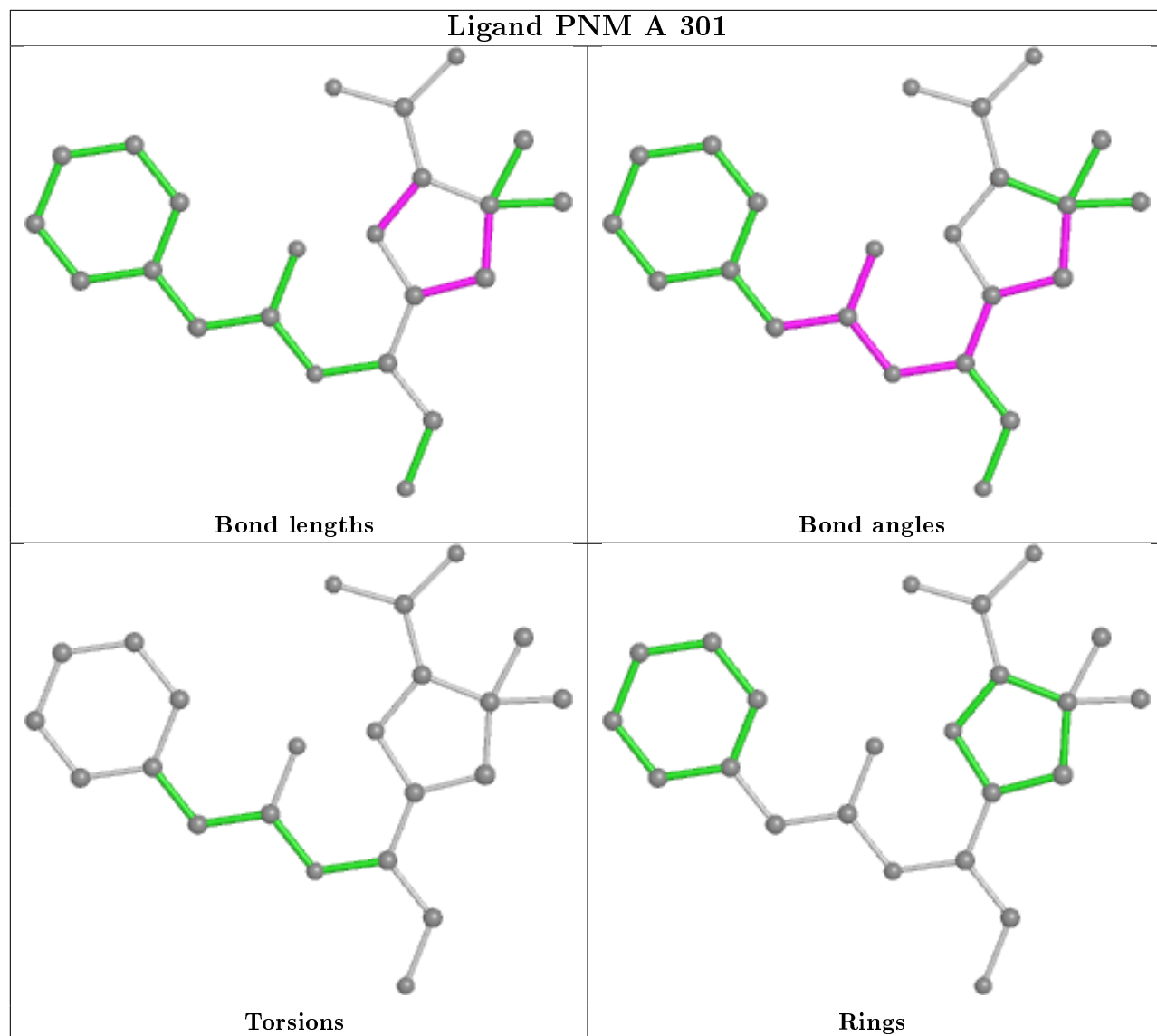
There are no torsion outliers.

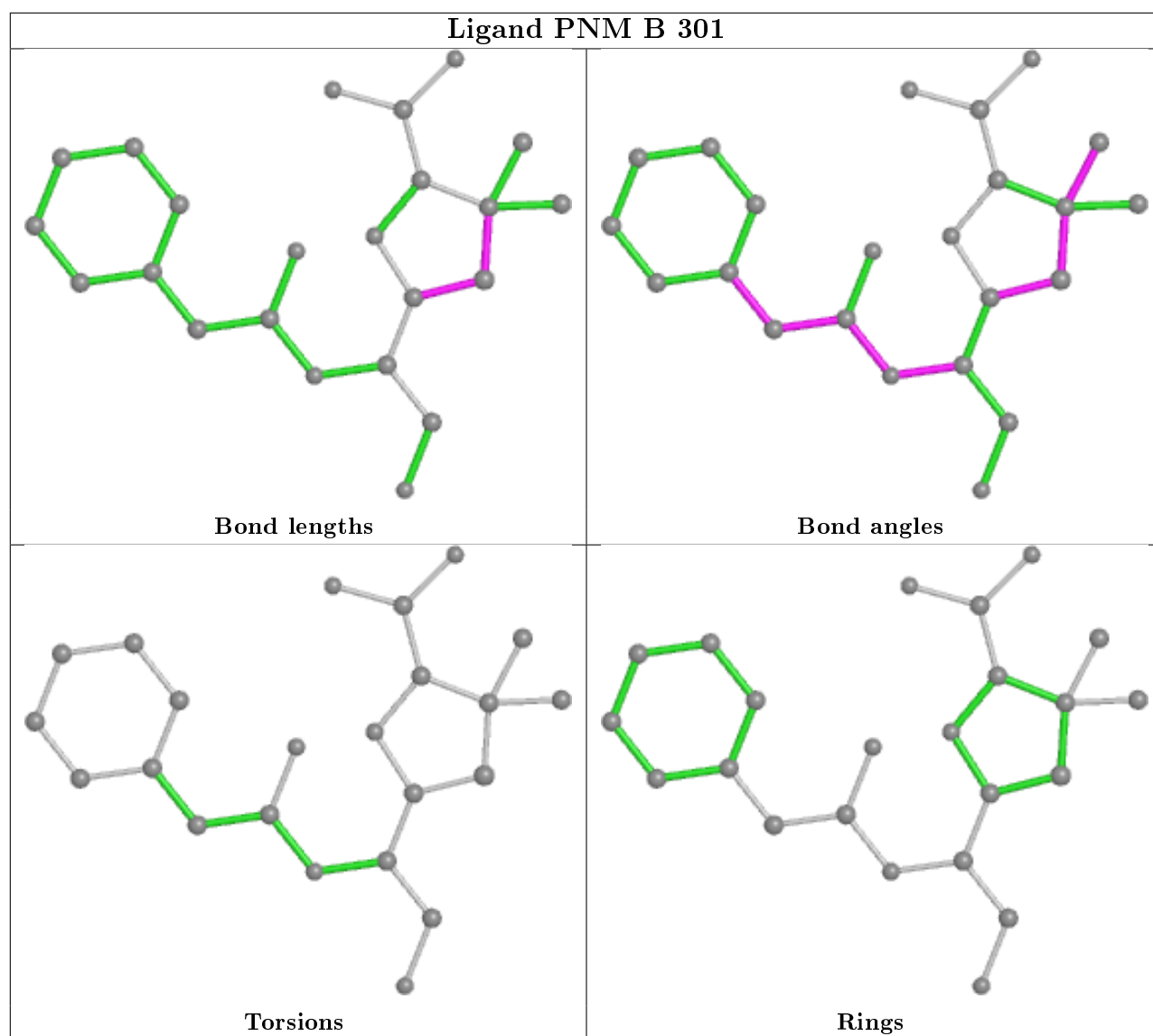
There are no ring outliers.

1 monomer is involved in 1 short contact:

Mol	Chain	Res	Type	Clashes	Symm-Clashes
2	A	301	PNM	1	0

The following is a two-dimensional graphical depiction of Mogul quality analysis of bond lengths, bond angles, torsion angles, and ring geometry for all instances of the Ligand of Interest. In addition, ligands with molecular weight > 250 and outliers as shown on the validation Tables will also be included. For torsion angles, if less than 5% of the Mogul distribution of torsion angles is within 10 degrees of the torsion angle in question, then that torsion angle is considered an outlier. Any bond that is central to one or more torsion angles identified as an outlier by Mogul will be highlighted in the graph. For rings, the root-mean-square deviation (RMSD) between the ring in question and similar rings identified by Mogul is calculated over all ring torsion angles. If the average RMSD is greater than 60 degrees and the minimal RMSD between the ring in question and any Mogul-identified rings is also greater than 60 degrees, then that ring is considered an outlier. The outliers are highlighted in purple. The color gray indicates Mogul did not find sufficient equivalents in the CSD to analyse the geometry.





5.7 Other polymers [i](#)

There are no such residues in this entry.

5.8 Polymer linkage issues [i](#)

There are no chain breaks in this entry.

6 Fit of model and data [i](#)

6.1 Protein, DNA and RNA chains [i](#)

In the following table, the column labelled ‘#RSRZ> 2’ contains the number (and percentage) of RSRZ outliers, followed by percent RSRZ outliers for the chain as percentile scores relative to all X-ray entries and entries of similar resolution. The OWAB column contains the minimum, median, 95th percentile and maximum values of the occupancy-weighted average B-factor per residue. The column labelled ‘Q< 0.9’ lists the number of (and percentage) of residues with an average occupancy less than 0.9.

Mol	Chain	Analysed	<RSRZ>	#RSRZ>2	OWAB(Å ²)	Q<0.9
1	A	233/255 (91%)	0.06	8 (3%) 45 44	22, 44, 67, 85	0
1	B	231/255 (90%)	0.16	8 (3%) 44 43	24, 47, 71, 81	0
All	All	464/510 (90%)	0.11	16 (3%) 45 44	22, 46, 69, 85	0

All (16) RSRZ outliers are listed below:

Mol	Chain	Res	Type	RSRZ
1	A	77	ASP	4.7
1	A	88	HIS	3.2
1	A	219	HIS	3.1
1	A	218	ASN	3.1
1	B	232	LYS	3.1
1	B	60	THR	2.8
1	A	90	PRO	2.8
1	A	212	VAL	2.7
1	A	81	ARG	2.6
1	B	17	TYR	2.6
1	B	225	ALA	2.4
1	B	247	LYS	2.3
1	A	168	ASN	2.3
1	B	212	VAL	2.2
1	B	86	HIS	2.2
1	B	10	LYS	2.0

6.2 Non-standard residues in protein, DNA, RNA chains [i](#)

There are no non-standard protein/DNA/RNA residues in this entry.

6.3 Carbohydrates [i](#)

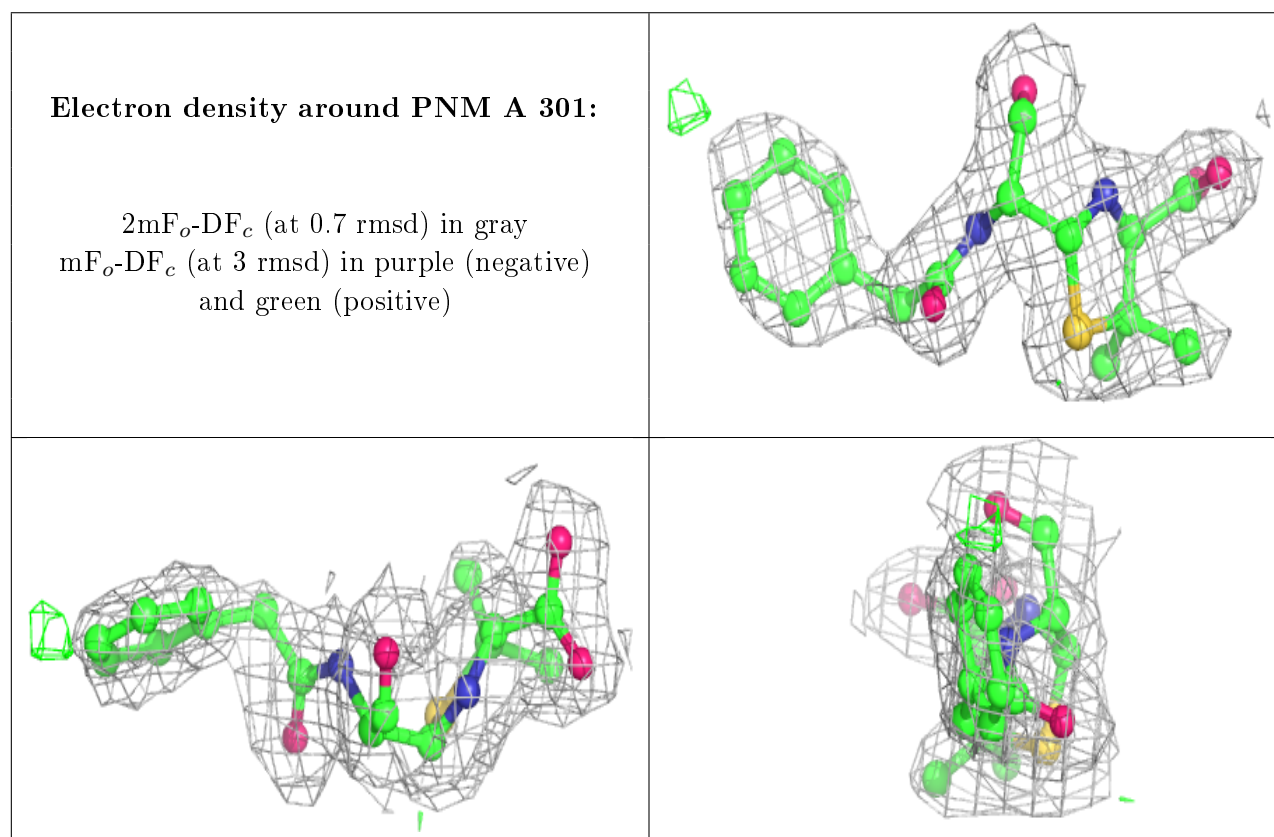
There are no carbohydrates in this entry.

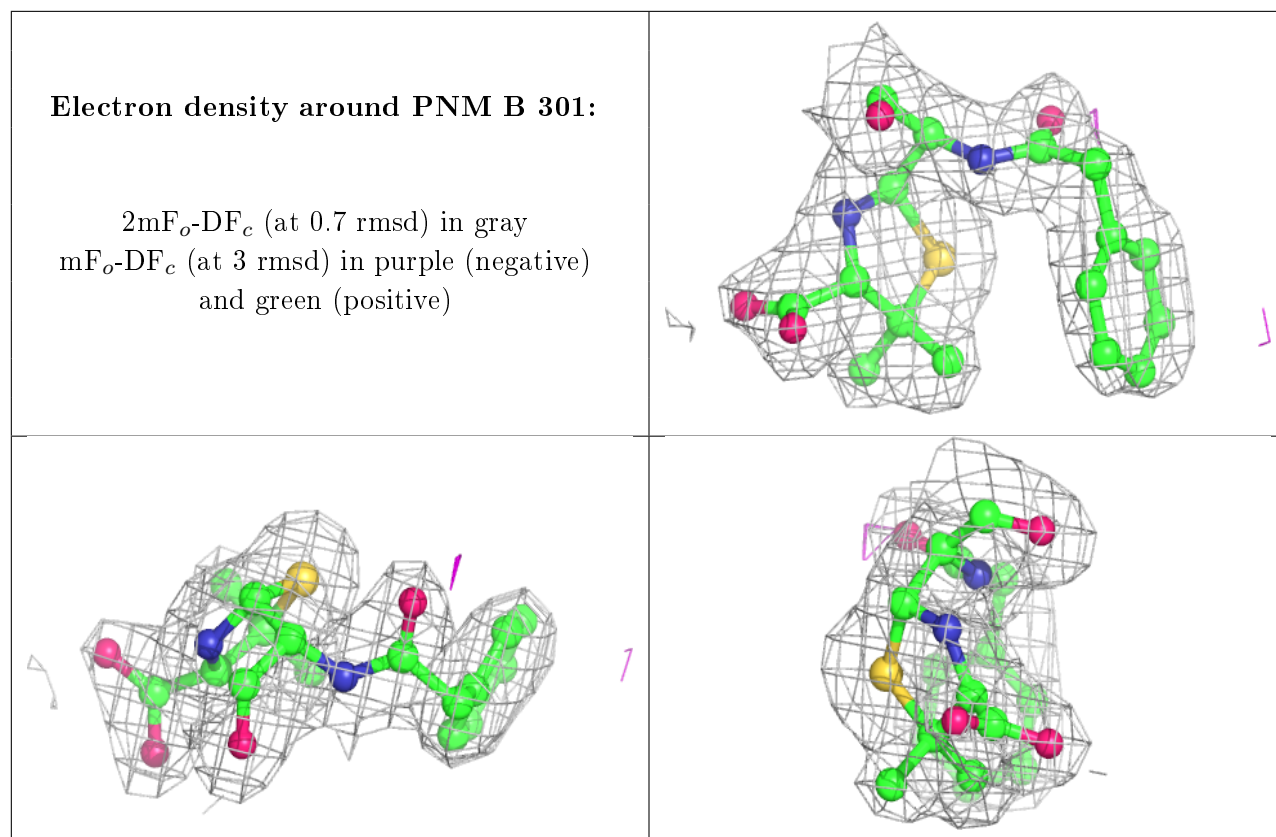
6.4 Ligands [i](#)

In the following table, the Atoms column lists the number of modelled atoms in the group and the number defined in the chemical component dictionary. The B-factors column lists the minimum, median, 95th percentile and maximum values of B factors of atoms in the group. The column labelled 'Q<0.9' lists the number of atoms with occupancy less than 0.9.

Mol	Type	Chain	Res	Atoms	RSCC	RSR	B-factors(Å ²)	Q<0.9
2	PNM	A	301	23/23	0.94	0.13	27,36,46,48	0
2	PNM	B	301	23/23	0.95	0.13	24,33,42,45	0

The following is a graphical depiction of the model fit to experimental electron density of all instances of the Ligand of Interest. In addition, ligands with molecular weight > 250 and outliers as shown on the geometry validation Tables will also be included. Each fit is shown from different orientation to approximate a three-dimensional view.





6.5 Other polymers [i](#)

There are no such residues in this entry.