



wwPDB X-ray Structure Validation Summary Report

Jun 17, 2024 – 05:18 PM EDT

PDB ID : 2X2Z
Title : Crystal structure AMA1 from *Toxoplasma gondii*
Authors : Crawford, J.; Tonkin, M.L.; Grujic, O.; Boulanger, M.J.
Deposited on : 2010-01-18
Resolution : 2.00 Å(reported)

This is a wwPDB X-ray Structure Validation Summary Report for a publicly released PDB entry.

We welcome your comments at validation@mail.wwpdb.org

A user guide is available at

<https://www.wwpdb.org/validation/2017/XrayValidationReportHelp>

with specific help available everywhere you see the  symbol.

The types of validation reports are described at

<http://www.wwpdb.org/validation/2017/FAQs#types>.

The following versions of software and data (see [references](#) ) were used in the production of this report:

MolProbity : 4.02b-467
Mogul : 2022.3.0, CSD as543be (2022)
Xtriage (Phenix) : 1.20.1
EDS : 2.37.1
Percentile statistics : 20191225.v01 (using entries in the PDB archive December 25th 2019)
Refmac : 5.8.0158
CCP4 : 7.0.044 (Gargrove)
Ideal geometry (proteins) : Engh & Huber (2001)
Ideal geometry (DNA, RNA) : Parkinson et al. (1996)
Validation Pipeline (wwPDB-VP) : 2.37.1

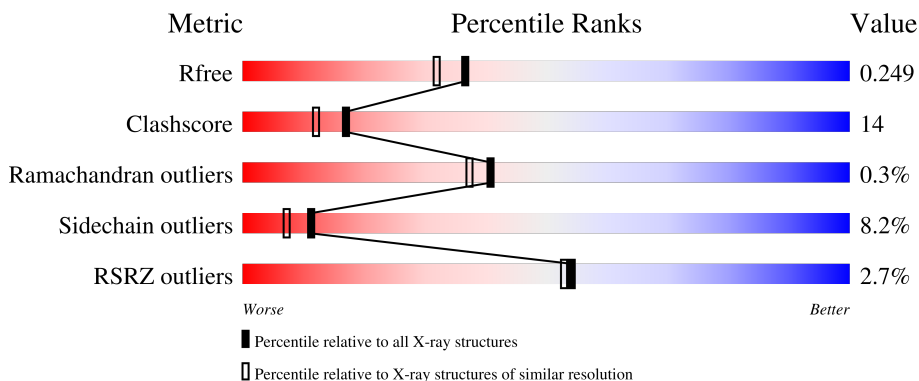
1 Overall quality at a glance

The following experimental techniques were used to determine the structure:

X-RAY DIFFRACTION

The reported resolution of this entry is 2.00 Å.

Percentile scores (ranging between 0-100) for global validation metrics of the entry are shown in the following graphic. The table shows the number of entries on which the scores are based.



Metric	Whole archive (#Entries)	Similar resolution (#Entries, resolution range(Å))
R_{free}	130704	8085 (2.00-2.00)
Clashscore	141614	9178 (2.00-2.00)
Ramachandran outliers	138981	9054 (2.00-2.00)
Sidechain outliers	138945	9053 (2.00-2.00)
RSRZ outliers	127900	7900 (2.00-2.00)

The table below summarises the geometric issues observed across the polymeric chains and their fit to the electron density. The red, orange, yellow and green segments of the lower bar indicate the fraction of residues that contain outliers for ≥ 3 , 2, 1 and 0 types of geometric quality criteria respectively. A grey segment represents the fraction of residues that are not modelled. The numeric value for each fraction is indicated below the corresponding segment, with a dot representing fractions $\leq 5\%$. The upper red bar (where present) indicates the fraction of residues that have poor fit to the electron density. The numeric value is given above the bar.

Mol	Chain	Length	Quality of chain
1	A	456	 2% 68% 18% 11%
1	B	456	 % 66% 17% 12%
1	D	456	 5% 58% 18% 20%
1	E	456	 2% 60% 22% 13%

2 Entry composition [i](#)

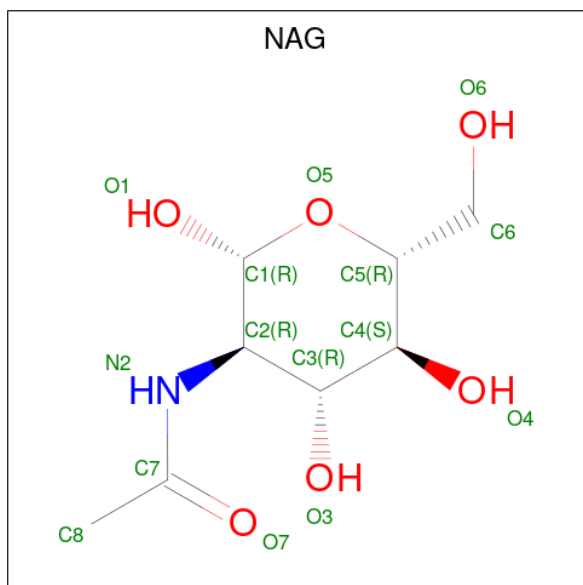
There are 4 unique types of molecules in this entry. The entry contains 13675 atoms, of which 0 are hydrogens and 0 are deuteriums.

In the tables below, the ZeroOcc column contains the number of atoms modelled with zero occupancy, the AltConf column contains the number of residues with at least one atom in alternate conformation and the Trace column contains the number of residues modelled with at most 2 atoms.

- Molecule 1 is a protein called APICAL MEMBRANE ANTIGEN 1, PUTATIVE.

Mol	Chain	Residues	Atoms					ZeroOcc	AltConf	Trace
			Total	C	N	O	S			
1	A	407	Total 3218	C 2022	N 550	O 624	S 22	0	1	0
1	B	401	Total 3173	C 1999	N 540	O 612	S 22	0	0	0
1	D	367	Total 2909	C 1836	N 497	O 556	S 20	0	0	0
1	E	396	Total 3143	C 1978	N 537	O 606	S 22	0	1	0

- Molecule 2 is 2-acetamido-2-deoxy-beta-D-glucopyranose (three-letter code: NAG) (formula: C₈H₁₅NO₆).



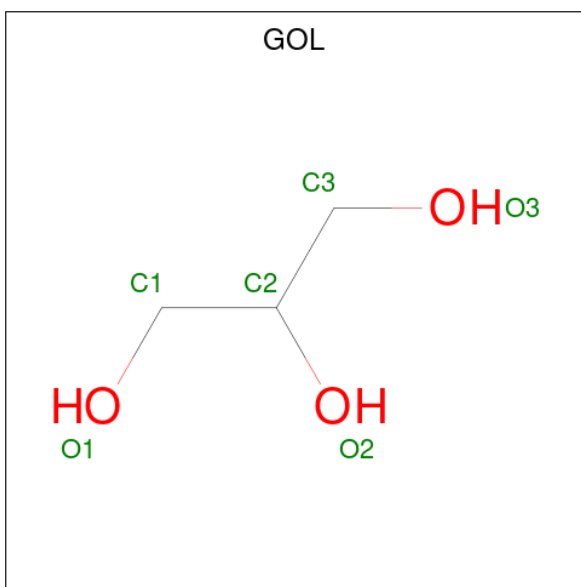
Mol	Chain	Residues	Atoms				ZeroOcc	AltConf
			Total	C	N	O		
2	A	1	Total 14	C 8	N 1	O 5	0	0
2	B	1	Total 14	C 8	N 1	O 5	0	0

Continued on next page...

Continued from previous page...

Mol	Chain	Residues	Atoms				ZeroOcc	AltConf
2	D	1	Total	C	N	O	0	0
			14	8	1	5		
2	E	1	Total	C	N	O	0	0
			14	8	1	5		

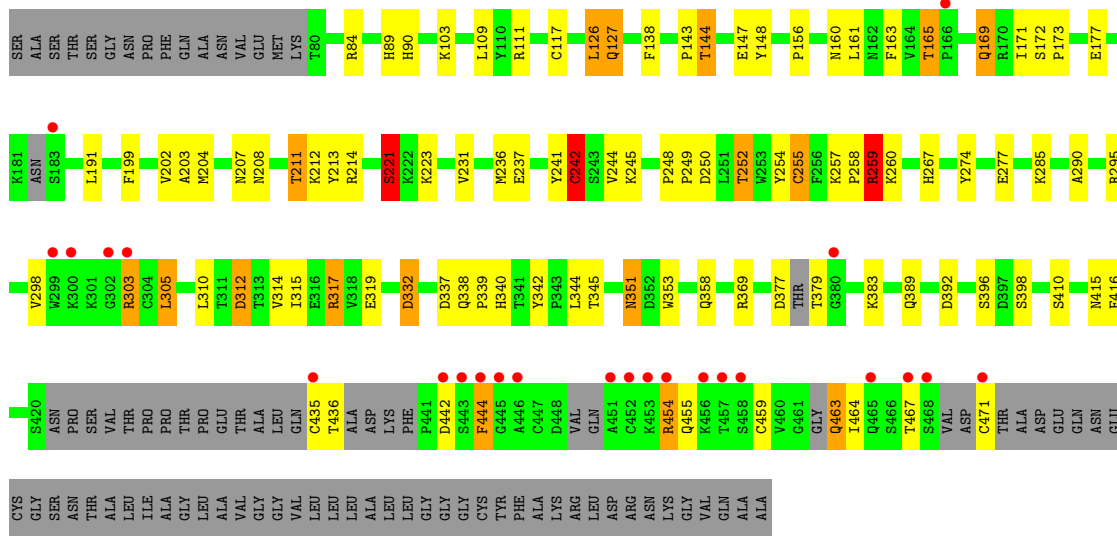
- Molecule 3 is GLYCEROL (three-letter code: GOL) (formula: C₃H₈O₃).



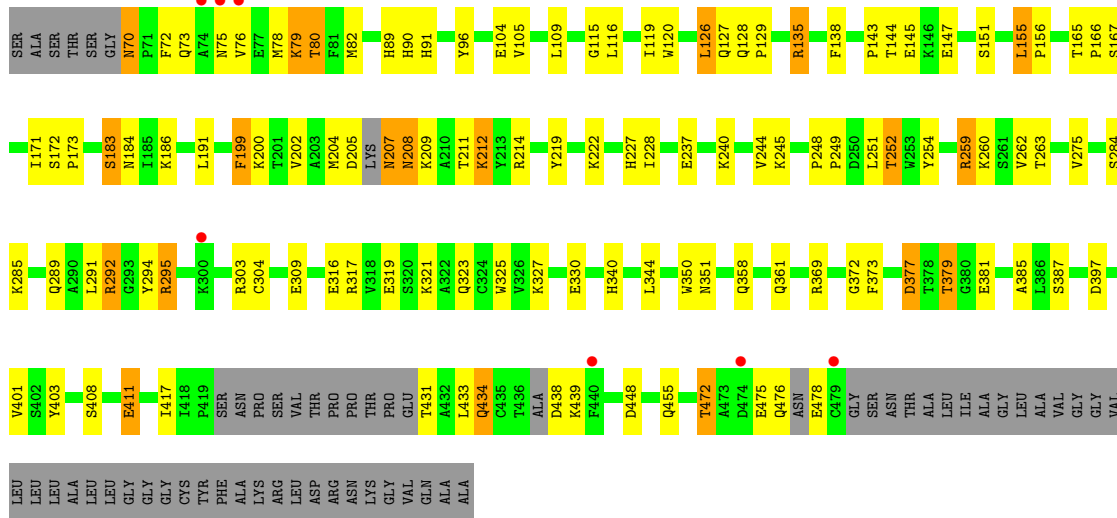
Mol	Chain	Residues	Atoms			ZeroOcc	AltConf
3	D	1	Total	C	O	0	0
			6	3	3		

- Molecule 4 is water.

Mol	Chain	Residues	Atoms		ZeroOcc	AltConf
4	A	316	Total	O	0	0
			316	316		
4	B	294	Total	O	0	0
			294	294		
4	D	276	Total	O	0	0
			276	276		
4	E	284	Total	O	0	0
			284	284		



• Molecule 1: APICAL MEMBRANE ANTIGEN 1, PUTATIVE



4 Data and refinement statistics

Property	Value	Source
Space group	P 1	Depositor
Cell constants a, b, c, α , β , γ	66.15Å 76.07Å 88.25Å 72.19° 71.44° 72.90°	Depositor
Resolution (Å)	43.90 – 2.00 43.90 – 2.00	Depositor EDS
% Data completeness (in resolution range)	96.4 (43.90-2.00) 96.4 (43.90-2.00)	Depositor EDS
R_{merge}	0.07	Depositor
R_{sym}	(Not available)	Depositor
$\langle I/\sigma(I) \rangle$ ¹	3.00 (at 2.00Å)	Xtrriage
Refinement program	REFMAC 5.5.0088	Depositor
R, R_{free}	0.180 , 0.248 0.179 , 0.249	Depositor DCC
R_{free} test set	4915 reflections (4.98%)	wwPDB-VP
Wilson B-factor (Å ²)	23.1	Xtrriage
Anisotropy	0.040	Xtrriage
Bulk solvent k_{sol} (e/Å ³), B_{sol} (Å ²)	0.39 , 57.2	EDS
L-test for twinning ²	$\langle L \rangle = 0.49$, $\langle L^2 \rangle = 0.32$	Xtrriage
Estimated twinning fraction	No twinning to report.	Xtrriage
F_o, F_c correlation	0.95	EDS
Total number of atoms	13675	wwPDB-VP
Average B, all atoms (Å ²)	26.0	wwPDB-VP

Xtrriage's analysis on translational NCS is as follows: *The largest off-origin peak in the Patterson function is 5.37% of the height of the origin peak. No significant pseudotranslation is detected.*

¹Intensities estimated from amplitudes.

²Theoretical values of $\langle |L| \rangle$, $\langle L^2 \rangle$ for acentric reflections are 0.5, 0.333 respectively for untwinned datasets, and 0.375, 0.2 for perfectly twinned datasets.

5 Model quality [i](#)

5.1 Standard geometry [i](#)

Bond lengths and bond angles in the following residue types are not validated in this section: GOL, NAG

The Z score for a bond length (or angle) is the number of standard deviations the observed value is removed from the expected value. A bond length (or angle) with $|Z| > 5$ is considered an outlier worth inspection. RMSZ is the root-mean-square of all Z scores of the bond lengths (or angles).

Mol	Chain	Bond lengths		Bond angles	
		RMSZ	# Z >5	RMSZ	# Z >5
1	A	1.05	4/3308 (0.1%)	0.93	5/4491 (0.1%)
1	B	1.13	8/3258 (0.2%)	0.98	11/4418 (0.2%)
1	D	1.22	12/2985 (0.4%)	0.97	8/4039 (0.2%)
1	E	1.04	3/3228 (0.1%)	0.94	2/4375 (0.0%)
All	All	1.11	27/12779 (0.2%)	0.95	26/17323 (0.2%)

Chiral center outliers are detected by calculating the chiral volume of a chiral center and verifying if the center is modelled as a planar moiety or with the opposite hand. A planarity outlier is detected by checking planarity of atoms in a peptide group, atoms in a mainchain group or atoms of a sidechain that are expected to be planar.

Mol	Chain	#Chirality outliers	#Planarity outliers
1	A	0	1
1	B	0	2
1	D	0	2
1	E	0	1
All	All	0	6

The worst 5 of 27 bond length outliers are listed below:

Mol	Chain	Res	Type	Atoms	Z	Observed(Å)	Ideal(Å)
1	D	255	CYS	CB-SG	-17.41	1.52	1.82
1	B	255	CYS	CB-SG	-16.93	1.53	1.82
1	D	242	CYS	CB-SG	13.20	2.04	1.82
1	B	242	CYS	CB-SG	11.61	2.02	1.82
1	D	177	GLU	CD-OE2	10.00	1.36	1.25

The worst 5 of 26 bond angle outliers are listed below:

Mol	Chain	Res	Type	Atoms	Z	Observed(°)	Ideal(°)
1	B	295	ARG	NE-CZ-NH1	9.70	125.15	120.30
1	B	295	ARG	NE-CZ-NH2	-8.84	115.88	120.30
1	A	170	ARG	CG-CD-NE	-8.68	93.58	111.80
1	A	135	ARG	NE-CZ-NH2	-7.81	116.40	120.30
1	D	295	ARG	NE-CZ-NH1	7.43	124.02	120.30

There are no chirality outliers.

5 of 6 planarity outliers are listed below:

Mol	Chain	Res	Type	Group
1	A	429	PRO	Peptide
1	B	241	TYR	Peptide
1	B	430	GLU	Peptide
1	D	241	TYR	Peptide
1	D	259	ARG	Peptide

5.2 Too-close contacts [i](#)

In the following table, the Non-H and H(model) columns list the number of non-hydrogen atoms and hydrogen atoms in the chain respectively. The H(added) column lists the number of hydrogen atoms added and optimized by MolProbity. The Clashes column lists the number of clashes within the asymmetric unit, whereas Symm-Clashes lists symmetry-related clashes.

Mol	Chain	Non-H	H(model)	H(added)	Clashes	Symm-Clashes
1	A	3218	0	3039	71	0
1	B	3173	0	3002	95	0
1	D	2909	0	2756	79	0
1	E	3143	0	2971	103	0
2	A	14	0	13	0	0
2	B	14	0	13	0	0
2	D	14	0	13	3	0
2	E	14	0	13	2	0
3	D	6	0	8	0	0
4	A	316	0	0	10	0
4	B	294	0	0	18	0
4	D	276	0	0	19	0
4	E	284	0	0	19	0
All	All	13675	0	11828	341	0

The all-atom clashscore is defined as the number of clashes found per 1000 atoms (including hydrogen atoms). The all-atom clashscore for this structure is 14.

The worst 5 of 341 close contacts within the same asymmetric unit are listed below, sorted by

their clash magnitude.

Atom-1	Atom-2	Interatomic distance (Å)	Clash overlap (Å)
1:B:242:CYS:CB	1:B:242:CYS:SG	2.02	1.48
1:D:242:CYS:SG	1:D:242:CYS:CB	2.04	1.44
1:D:398:SER:HB2	4:D:2254:HOH:O	1.25	1.30
1:E:119:ILE:HG13	4:E:2041:HOH:O	0.99	1.15
1:D:435:CYS:HB2	1:D:459:CYS:SG	1.88	1.14

There are no symmetry-related clashes.

5.3 Torsion angles [\(i\)](#)

5.3.1 Protein backbone [\(i\)](#)

In the following table, the Percentiles column shows the percent Ramachandran outliers of the chain as a percentile score with respect to all X-ray entries followed by that with respect to entries of similar resolution.

The Analysed column shows the number of residues for which the backbone conformation was analysed, and the total number of residues.

Mol	Chain	Analysed	Favoured	Allowed	Outliers	Percentiles	
1	A	402/456 (88%)	387 (96%)	14 (4%)	1 (0%)	47	44
1	B	391/456 (86%)	378 (97%)	12 (3%)	1 (0%)	41	37
1	D	352/456 (77%)	337 (96%)	14 (4%)	1 (0%)	41	37
1	E	387/456 (85%)	370 (96%)	16 (4%)	1 (0%)	41	37
All	All	1532/1824 (84%)	1472 (96%)	56 (4%)	4 (0%)	41	37

All (4) Ramachandran outliers are listed below:

Mol	Chain	Res	Type
1	A	208	ASN
1	B	427	PRO
1	E	208	ASN
1	D	332	ASP

5.3.2 Protein sidechains [\(i\)](#)

In the following table, the Percentiles column shows the percent sidechain outliers of the chain as a percentile score with respect to all X-ray entries followed by that with respect to entries of similar

resolution.

The Analysed column shows the number of residues for which the sidechain conformation was analysed, and the total number of residues.

Mol	Chain	Analysed	Rotameric	Outliers	Percentiles	
1	A	356/388 (92%)	327 (92%)	29 (8%)	11	7
1	B	351/388 (90%)	321 (92%)	30 (8%)	10	6
1	D	321/388 (83%)	295 (92%)	26 (8%)	11	7
1	E	347/388 (89%)	319 (92%)	28 (8%)	11	7
All	All	1375/1552 (89%)	1262 (92%)	113 (8%)	11	7

5 of 113 residues with a non-rotameric sidechain are listed below:

Mol	Chain	Res	Type
1	B	430	GLU
1	E	439	LYS
1	D	245	LYS
1	E	438	ASP
1	E	252	THR

Sometimes sidechains can be flipped to improve hydrogen bonding and reduce clashes. 5 of 63 such sidechains are listed below:

Mol	Chain	Res	Type
1	B	434	GLN
1	E	289	GLN
1	D	160	ASN
1	E	265	ASN
1	E	358	GLN

5.3.3 RNA [i](#)

There are no RNA molecules in this entry.

5.4 Non-standard residues in protein, DNA, RNA chains [i](#)

There are no non-standard protein/DNA/RNA residues in this entry.

5.5 Carbohydrates [i](#)

There are no monosaccharides in this entry.

5.6 Ligand geometry [i](#)

5 ligands are modelled in this entry.

In the following table, the Counts columns list the number of bonds (or angles) for which Mogul statistics could be retrieved, the number of bonds (or angles) that are observed in the model and the number of bonds (or angles) that are defined in the Chemical Component Dictionary. The Link column lists molecule types, if any, to which the group is linked. The Z score for a bond length (or angle) is the number of standard deviations the observed value is removed from the expected value. A bond length (or angle) with $|Z| > 2$ is considered an outlier worth inspection. RMSZ is the root-mean-square of all Z scores of the bond lengths (or angles).

Mol	Type	Chain	Res	Link	Bond lengths			Bond angles		
					Counts	RMSZ	# Z > 2	Counts	RMSZ	# Z > 2
2	NAG	A	1001	1	14,14,15	0.82	0	17,19,21	1.94	3 (17%)
3	GOL	D	1472	-	5,5,5	0.39	0	5,5,5	0.52	0
2	NAG	B	1001	1	14,14,15	1.09	1 (7%)	17,19,21	1.12	1 (5%)
2	NAG	E	1001	1	14,14,15	0.69	0	17,19,21	1.39	3 (17%)
2	NAG	D	1001	1	14,14,15	0.65	0	17,19,21	2.22	5 (29%)

In the following table, the Chirals column lists the number of chiral outliers, the number of chiral centers analysed, the number of these observed in the model and the number defined in the Chemical Component Dictionary. Similar counts are reported in the Torsion and Rings columns. '-' means no outliers of that kind were identified.

Mol	Type	Chain	Res	Link	Chirals	Torsions	Rings
2	NAG	A	1001	1	-	2/6/23/26	0/1/1/1
3	GOL	D	1472	-	-	0/4/4/4	-
2	NAG	B	1001	1	-	2/6/23/26	0/1/1/1
2	NAG	E	1001	1	-	3/6/23/26	0/1/1/1
2	NAG	D	1001	1	-	4/6/23/26	0/1/1/1

All (1) bond length outliers are listed below:

Mol	Chain	Res	Type	Atoms	Z	Observed(Å)	Ideal(Å)
2	B	1001	NAG	O5-C1	-3.08	1.38	1.43

The worst 5 of 12 bond angle outliers are listed below:

Mol	Chain	Res	Type	Atoms	Z	Observed(°)	Ideal(°)
2	A	1001	NAG	C2-N2-C7	5.66	130.48	122.90
2	D	1001	NAG	O7-C7-C8	-4.34	114.33	122.05
2	D	1001	NAG	C8-C7-N2	4.21	123.11	116.12

Continued on next page...

Continued from previous page...

Mol	Chain	Res	Type	Atoms	Z	Observed(°)	Ideal(°)
2	D	1001	NAG	O5-C5-C6	3.65	114.77	107.66
2	D	1001	NAG	C4-C3-C2	3.55	116.22	111.02

There are no chirality outliers.

5 of 11 torsion outliers are listed below:

Mol	Chain	Res	Type	Atoms
2	A	1001	NAG	C8-C7-N2-C2
2	A	1001	NAG	O7-C7-N2-C2
2	B	1001	NAG	C8-C7-N2-C2
2	B	1001	NAG	O7-C7-N2-C2
2	D	1001	NAG	C8-C7-N2-C2

There are no ring outliers.

2 monomers are involved in 5 short contacts:

Mol	Chain	Res	Type	Clashes	Symm-Clashes
2	E	1001	NAG	2	0
2	D	1001	NAG	3	0

5.7 Other polymers [i](#)

There are no such residues in this entry.

5.8 Polymer linkage issues [i](#)

There are no chain breaks in this entry.

6 Fit of model and data [i](#)

6.1 Protein, DNA and RNA chains [i](#)

In the following table, the column labelled ‘#RSRZ> 2’ contains the number (and percentage) of RSRZ outliers, followed by percent RSRZ outliers for the chain as percentile scores relative to all X-ray entries and entries of similar resolution. The OWAB column contains the minimum, median, 95th percentile and maximum values of the occupancy-weighted average B-factor per residue. The column labelled ‘Q< 0.9’ lists the number of (and percentage) of residues with an average occupancy less than 0.9.

Mol	Chain	Analysed	<RSRZ>	#RSRZ>2	OWAB(Å ²)	Q<0.9
1	A	407/456 (89%)	-0.29	8 (1%) 65 63	12, 22, 45, 57	0
1	B	401/456 (87%)	-0.27	4 (0%) 82 81	10, 23, 46, 56	0
1	D	367/456 (80%)	-0.11	24 (6%) 18 18	12, 22, 56, 67	0
1	E	396/456 (86%)	-0.24	7 (1%) 68 66	12, 24, 42, 59	0
All	All	1571/1824 (86%)	-0.23	43 (2%) 54 53	10, 23, 46, 67	0

The worst 5 of 43 RSRZ outliers are listed below:

Mol	Chain	Res	Type	RSRZ
1	D	444	PHE	5.7
1	E	440	PHE	4.8
1	E	74	ALA	3.8
1	E	76	VAL	3.8
1	D	443	SER	3.6

6.2 Non-standard residues in protein, DNA, RNA chains [i](#)

There are no non-standard protein/DNA/RNA residues in this entry.

6.3 Carbohydrates [i](#)

There are no monosaccharides in this entry.

6.4 Ligands [i](#)

In the following table, the Atoms column lists the number of modelled atoms in the group and the number defined in the chemical component dictionary. The B-factors column lists the minimum, median, 95th percentile and maximum values of B factors of atoms in the group. The column labelled ‘Q< 0.9’ lists the number of atoms with occupancy less than 0.9.

Mol	Type	Chain	Res	Atoms	RSCC	RSR	B-factors(\AA^2)	Q<0.9
2	NAG	D	1001	14/15	0.86	0.20	35,38,42,43	0
2	NAG	B	1001	14/15	0.87	0.13	22,27,34,38	0
2	NAG	E	1001	14/15	0.89	0.16	28,32,37,37	0
2	NAG	A	1001	14/15	0.95	0.11	18,24,28,30	0
3	GOL	D	1472	6/6	0.97	0.09	20,25,26,26	0

6.5 Other polymers [i](#)

There are no such residues in this entry.