



# Full wwPDB X-ray Structure Validation Report ⓘ

May 24, 2020 – 03:16 pm BST

PDB ID : 3WVD  
Title : Crystal structure of Nitrile Hydratase mutant bR56K complexed with Trimethylacetone nitrile, photo-activated for 50 min  
Authors : Yamanaka, Y.; Hashimoto, K.; Noguchi, K.; Yohda, M.; Odaka, M.  
Deposited on : 2014-05-17  
Resolution : 1.18 Å (reported)

This is a Full wwPDB X-ray Structure Validation Report for a publicly released PDB entry.

We welcome your comments at [validation@mail.wwpdb.org](mailto:validation@mail.wwpdb.org)

A user guide is available at

<https://www.wwpdb.org/validation/2017/XrayValidationReportHelp>

with specific help available everywhere you see the ⓘ symbol.

---

The following versions of software and data (see [references ⓘ](#)) were used in the production of this report:

MolProbity : 4.02b-467  
Mogul : 1.8.5 (274361), CSD as541be (2020)  
Xtriage (Phenix) : 1.13  
EDS : 2.11  
Percentile statistics : 20191225.v01 (using entries in the PDB archive December 25th 2019)  
Refmac : 5.8.0158  
CCP4 : 7.0.044 (Gargrove)  
Ideal geometry (proteins) : Engh & Huber (2001)  
Ideal geometry (DNA, RNA) : Parkinson et al. (1996)  
Validation Pipeline (wwPDB-VP) : 2.11

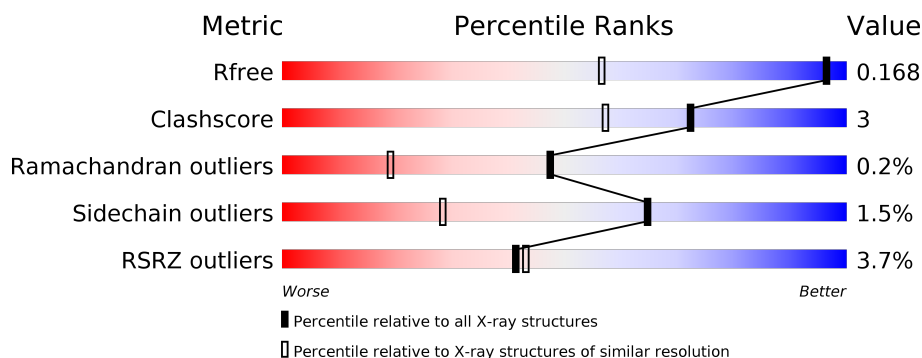
# 1 Overall quality at a glance

The following experimental techniques were used to determine the structure:

*X-RAY DIFFRACTION*

The reported resolution of this entry is 1.18 Å.

Percentile scores (ranging between 0-100) for global validation metrics of the entry are shown in the following graphic. The table shows the number of entries on which the scores are based.



Metric	Whole archive (#Entries)	Similar resolution (#Entries, resolution range(Å))
$R_{free}$	130704	1123 (1.20-1.16)
Clashscore	141614	1182 (1.20-1.16)
Ramachandran outliers	138981	1134 (1.20-1.16)
Sidechain outliers	138945	1134 (1.20-1.16)
RSRZ outliers	127900	1102 (1.20-1.16)

The table below summarises the geometric issues observed across the polymeric chains and their fit to the electron density. The red, orange, yellow and green segments on the lower bar indicate the fraction of residues that contain outliers for  $\geq 3$ , 2, 1 and 0 types of geometric quality criteria respectively. A grey segment represents the fraction of residues that are not modelled. The numeric value for each fraction is indicated below the corresponding segment, with a dot representing fractions  $\leq 5\%$ . The upper red bar (where present) indicates the fraction of residues that have poor fit to the electron density. The numeric value is given above the bar.

Mol	Chain	Length	Quality of chain
1	A	207	 4% 85% 9% • 5%
2	B	212	 3% 88% 10% •

The following table lists non-polymeric compounds, carbohydrate monomers and non-standard residues in protein, DNA, RNA chains that are outliers for geometric or electron-density-fit criteria:

Mol	Type	Chain	Res	Chirality	Geometry	Clashes	Electron density
5	TAN	A	303	-	X	-	-

## 2 Entry composition [i](#)

There are 6 unique types of molecules in this entry. The entry contains 3632 atoms, of which 0 are hydrogens and 0 are deuteriums.

In the tables below, the ZeroOcc column contains the number of atoms modelled with zero occupancy, the AltConf column contains the number of residues with at least one atom in alternate conformation and the Trace column contains the number of residues modelled with at most 2 atoms.

- Molecule 1 is a protein called Nitrile hydratase subunit alpha.

Mol	Chain	Residues	Atoms					ZeroOcc	AltConf	Trace
			Total	C	N	O	S			
1	A	196	1548	987	260	295	6	8	2	0

- Molecule 2 is a protein called Nitrile hydratase subunit beta.

Mol	Chain	Residues	Atoms					ZeroOcc	AltConf	Trace
			Total	C	N	O	S			
2	B	212	1696	1076	288	323	9	0	6	0

There is a discrepancy between the modelled and reference sequences:

Chain	Residue	Modelled	Actual	Comment	Reference
B	56	LYS	ARG	ENGINEERED MUTATION	UNP P13449

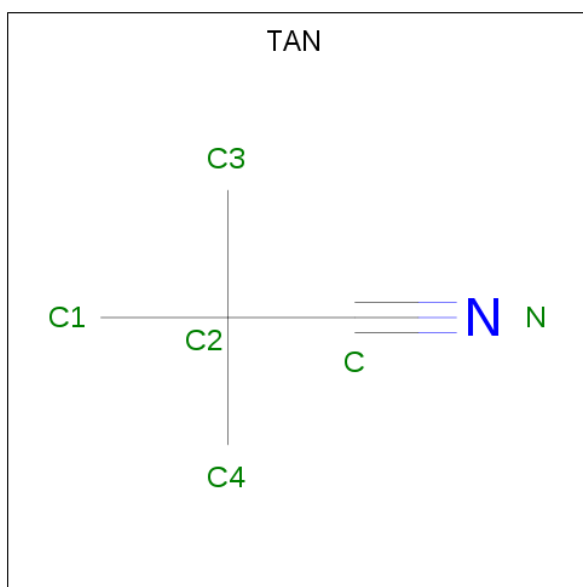
- Molecule 3 is FE (III) ION (three-letter code: FE) (formula: Fe).

Mol	Chain	Residues	Atoms		ZeroOcc	AltConf
3	A	1	Total	Fe	0	0
			1	1		

- Molecule 4 is MAGNESIUM ION (three-letter code: MG) (formula: Mg).

Mol	Chain	Residues	Atoms		ZeroOcc	AltConf
4	B	2	Total	Mg	0	0
			2	2		
4	A	1	Total	Mg	0	0
			1	1		

- Molecule 5 is 2,2-dimethylpropanenitrile (three-letter code: TAN) (formula: C<sub>5</sub>H<sub>9</sub>N).



Mol	Chain	Residues	Atoms	ZeroOcc	AltConf
5	A	1	Total C N 6 5 1	0	0


- Molecule 6 is water.

Mol	Chain	Residues	Atoms	ZeroOcc	AltConf
6	A	177	Total O 177 177	0	0
6	B	201	Total O 201 201	0	0

### 3 Residue-property plots [i](#)


These plots are drawn for all protein, RNA and DNA chains in the entry. The first graphic for a chain summarises the proportions of the various outlier classes displayed in the second graphic. The second graphic shows the sequence view annotated by issues in geometry and electron density. Residues are color-coded according to the number of geometric quality criteria for which they contain at least one outlier: green = 0, yellow = 1, orange = 2 and red = 3 or more. A red dot above a residue indicates a poor fit to the electron density ( $RSRZ > 2$ ). Stretches of 2 or more consecutive residues without any outlier are shown as a green connector. Residues present in the sample, but not in the model, are shown in grey.

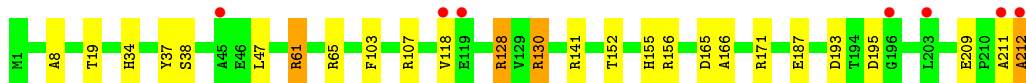
- Molecule 1: Nitrile hydratase subunit alpha

Chain A: 



- Molecule 2: Nitrile hydratase subunit beta

Chain B: 



## 4 Data and refinement statistics

Property	Value	Source
Space group	C 1 2 1	Depositor
Cell constants a, b, c, $\alpha$ , $\beta$ , $\gamma$	114.08Å 59.97Å 81.72Å 90.00° 125.05° 90.00°	Depositor
Resolution (Å)	18.19 – 1.18 18.18 – 1.18	Depositor EDS
% Data completeness (in resolution range)	95.1 (18.19-1.18) 95.1 (18.18-1.18)	Depositor EDS
$R_{merge}$	(Not available)	Depositor
$R_{sym}$	(Not available)	Depositor
$\langle I/\sigma(I) \rangle$ <sup>1</sup>	5.52 (at 1.18Å)	Xtrriage
Refinement program	REFMAC 5.7.0029	Depositor
R, $R_{free}$	0.142 , 0.163 0.149 , 0.168	Depositor DCC
$R_{free}$ test set	7079 reflections (5.03%)	wwPDB-VP
Wilson B-factor (Å <sup>2</sup> )	17.1	Xtrriage
Anisotropy	0.075	Xtrriage
Bulk solvent $k_{sol}$ (e/Å <sup>3</sup> ), $B_{sol}$ (Å <sup>2</sup> )	0.45 , 62.2	EDS
L-test for twinning <sup>2</sup>	$\langle  L  \rangle = 0.51$ , $\langle L^2 \rangle = 0.35$	Xtrriage
Estimated twinning fraction	No twinning to report.	Xtrriage
$F_o, F_c$ correlation	0.97	EDS
Total number of atoms	3632	wwPDB-VP
Average B, all atoms (Å <sup>2</sup> )	20.0	wwPDB-VP

Xtrriage's analysis on translational NCS is as follows: *The largest off-origin peak in the Patterson function is 6.33% of the height of the origin peak. No significant pseudotranslation is detected.*

<sup>1</sup>Intensities estimated from amplitudes.

<sup>2</sup>Theoretical values of  $\langle |L| \rangle$ ,  $\langle L^2 \rangle$  for acentric reflections are 0.5, 0.333 respectively for untwinned datasets, and 0.375, 0.2 for perfectly twinned datasets.

## 5 Model quality i

### 5.1 Standard geometry i

Bond lengths and bond angles in the following residue types are not validated in this section: CSD, MG, TAN, CSO, FE

The Z score for a bond length (or angle) is the number of standard deviations the observed value is removed from the expected value. A bond length (or angle) with  $|Z| > 5$  is considered an outlier worth inspection. RMSZ is the root-mean-square of all Z scores of the bond lengths (or angles).

Mol	Chain	Bond lengths		Bond angles	
		RMSZ	# Z  >5	RMSZ	# Z  >5
1	A	1.31	12/1574 (0.8%)	1.29	12/2150 (0.6%)
2	B	1.18	5/1750 (0.3%)	1.24	14/2379 (0.6%)
All	All	1.24	17/3324 (0.5%)	1.26	26/4529 (0.6%)

Chiral center outliers are detected by calculating the chiral volume of a chiral center and verifying if the center is modelled as a planar moiety or with the opposite hand. A planarity outlier is detected by checking planarity of atoms in a peptide group, atoms in a mainchain group or atoms of a sidechain that are expected to be planar.

Mol	Chain	#Chirality outliers	#Planarity outliers
2	B	0	2

All (17) bond length outliers are listed below:

Mol	Chain	Res	Type	Atoms	Z	Observed(Å)	Ideal(Å)
1	A	150	GLU	CD-OE1	-12.51	1.11	1.25
1	A	37	ASP	CG-OD1	-11.85	0.98	1.25
1	A	152	ALA	N-CA	-8.17	1.30	1.46
1	A	138	ARG	CZ-NH1	8.11	1.43	1.33
2	B	130	ARG	CZ-NH2	7.96	1.43	1.33
1	A	37	ASP	CG-OD2	7.86	1.43	1.25
1	A	141	ARG	CZ-NH2	-7.56	1.23	1.33
1	A	98	GLU	CD-OE2	-7.40	1.17	1.25
1	A	184	GLU	CB-CG	-6.84	1.39	1.52
2	B	38	SER	CA-CB	6.67	1.62	1.52
2	B	209	GLU	CD-OE2	-6.47	1.18	1.25
2	B	187	GLU	CD-OE2	6.45	1.32	1.25
1	A	138	ARG	CG-CD	6.30	1.67	1.51
2	B	195	ASP	CG-OD2	-5.70	1.12	1.25
1	A	10	ASN	CG-ND2	5.50	1.46	1.32
1	A	139	GLU	CD-OE1	-5.18	1.20	1.25

*Continued on next page...*



Continued from previous page...

Mol	Chain	Res	Type	Atoms	Z	Observed(Å)	Ideal(Å)
1	A	54	ARG	CZ-NH1	5.16	1.39	1.33

All (26) bond angle outliers are listed below:

Mol	Chain	Res	Type	Atoms	Z	Observed(°)	Ideal(°)
2	B	130	ARG	NE-CZ-NH2	20.14	130.37	120.30
1	A	54	ARG	NE-CZ-NH2	-17.97	111.31	120.30
1	A	54	ARG	NE-CZ-NH1	16.96	128.78	120.30
2	B	130	ARG	NE-CZ-NH1	-15.34	112.63	120.30
1	A	141	ARG	NE-CZ-NH1	10.93	125.77	120.30
1	A	37	ASP	CB-CG-OD2	-10.38	108.96	118.30
1	A	70	ARG	NE-CZ-NH1	-9.31	115.65	120.30
2	B	156	ARG	NE-CZ-NH2	-9.26	115.67	120.30
2	B	107	ARG	NE-CZ-NH1	8.07	124.34	120.30
2	B	47	LEU	CB-CG-CD1	7.88	124.40	111.00
2	B	61	ARG	NE-CZ-NH1	7.55	124.07	120.30
2	B	128	ARG	NE-CZ-NH2	7.54	124.07	120.30
2	B	212	ALA	CA-C-O	7.47	135.79	120.10
1	A	21	ARG	NE-CZ-NH2	-6.82	116.89	120.30
1	A	76	ASP	CB-CG-OD2	-6.77	112.21	118.30
1	A	32	LYS	CD-CE-NZ	6.75	127.22	111.70
2	B	128	ARG	NE-CZ-NH1	-5.85	117.37	120.30
2	B	107	ARG	NE-CZ-NH2	-5.74	117.43	120.30
2	B	193	ASP	CB-CG-OD1	-5.60	113.26	118.30
1	A	21	ARG	NE-CZ-NH1	5.59	123.09	120.30
1	A	138	ARG	NE-CZ-NH1	5.58	123.09	120.30
1	A	152	ALA	CA-C-O	5.40	131.43	120.10
2	B	37	TYR	CB-CG-CD1	5.39	124.24	121.00
2	B	19	THR	OG1-CB-CG2	-5.16	98.14	110.00
1	A	152	ALA	N-CA-C	-5.10	97.23	111.00
2	B	156	ARG	NE-CZ-NH1	5.08	122.84	120.30

There are no chirality outliers.

All (2) planarity outliers are listed below:

Mol	Chain	Res	Type	Group
2	B	141	ARG	Sidechain
2	B	61	ARG	Sidechain

## 5.2 Too-close contacts

In the following table, the Non-H and H(model) columns list the number of non-hydrogen atoms and hydrogen atoms in the chain respectively. The H(added) column lists the number of hydrogen atoms added and optimized by MolProbity. The Clashes column lists the number of clashes within the asymmetric unit, whereas Symm-Clashes lists symmetry related clashes.

Mol	Chain	Non-H	H(model)	H(added)	Clashes	Symm-Clashes
1	A	1548	0	1523	9	0
2	B	1696	0	1617	17	0
3	A	1	0	0	0	0
4	A	1	0	0	0	0
4	B	2	0	0	0	1
5	A	6	0	9	3	0
6	A	177	0	0	3	0
6	B	201	0	0	4	1
All	All	3632	0	3149	22	1

The all-atom clashscore is defined as the number of clashes found per 1000 atoms (including hydrogen atoms). The all-atom clashscore for this structure is 3.

All (22) close contacts within the same asymmetric unit are listed below, sorted by their clash magnitude.

Atom-1	Atom-2	Interatomic distance (Å)	Clash overlap (Å)
1:A:114:CSO:OD	5:A:303:TAN:C	1.84	1.24
1:A:137[A]:VAL:HG11	2:B:8:ALA:HB1	1.60	0.81
2:B:152[A]:THR:HG23	6:B:563:HOH:O	1.91	0.69
1:A:141:ARG:NH1	1:A:151:ILE:O	2.24	0.69
2:B:118:VAL:CG1	6:B:568:HOH:O	2.41	0.68
1:A:114:CSO:OD	5:A:303:TAN:C2	2.39	0.68
2:B:128:ARG:HG2	2:B:128:ARG:HH21	1.62	0.65
1:A:93:TYR:OH	2:B:155:HIS:HE1	1.81	0.63
2:B:118:VAL:HG12	6:B:568:HOH:O	1.99	0.62
1:A:114:CSO:HD	5:A:303:TAN:C	2.09	0.60
2:B:211:ALA:O	2:B:212:ALA:C	2.42	0.58
2:B:130:ARG:HH12	2:B:212:ALA:H	1.51	0.58
1:A:137[B]:VAL:HG23	6:A:423:HOH:O	2.06	0.54
2:B:118:VAL:HG13	6:B:568:HOH:O	2.03	0.54
6:A:502:HOH:O	2:B:65[A]:ARG:HD2	2.08	0.54
2:B:34:HIS:CD2	2:B:34:HIS:H	2.28	0.50
1:A:10:ASN:OD1	2:B:65[A]:ARG:NE	2.45	0.47
2:B:130:ARG:HH12	2:B:212:ALA:N	2.12	0.46
6:A:485:HOH:O	2:B:34:HIS:HE1	1.98	0.46

*Continued on next page...*

Continued from previous page...

Atom-1	Atom-2	Interatomic distance (Å)	Clash overlap (Å)
2:B:130:ARG:NH1	2:B:212:ALA:H	2.12	0.45
1:A:93:TYR:OH	2:B:155:HIS:CE1	2.68	0.45
2:B:166:ALA:HA	2:B:171:ARG:HD3	2.00	0.42

All (1) symmetry-related close contacts are listed below. The label for Atom-2 includes the symmetry operator and encoded unit-cell translations to be applied.

Atom-1	Atom-2	Interatomic distance (Å)	Clash overlap (Å)
4:B:302:MG:MG	6:B:511:HOH:O[2_755]	1.38	0.82

## 5.3 Torsion angles [i](#)

### 5.3.1 Protein backbone [i](#)

In the following table, the Percentiles column shows the percent Ramachandran outliers of the chain as a percentile score with respect to all X-ray entries followed by that with respect to entries of similar resolution.

The Analysed column shows the number of residues for which the backbone conformation was analysed, and the total number of residues.

Mol	Chain	Analysed	Favoured	Allowed	Outliers	Percentiles
1	A	194/207 (94%)	189 (97%)	4 (2%)	1 (0%)	29 7
2	B	216/212 (102%)	212 (98%)	4 (2%)	0	100 100
All	All	410/419 (98%)	401 (98%)	8 (2%)	1 (0%)	47 19

All (1) Ramachandran outliers are listed below:

Mol	Chain	Res	Type
1	A	113	SER

### 5.3.2 Protein sidechains [i](#)

In the following table, the Percentiles column shows the percent sidechain outliers of the chain as a percentile score with respect to all X-ray entries followed by that with respect to entries of similar resolution.

The Analysed column shows the number of residues for which the sidechain conformation was analysed, and the total number of residues.

Mol	Chain	Analysed	Rotameric	Outliers	Percentiles	
1	A	162/171 (95%)	159 (98%)	3 (2%)	57	18
2	B	179/173 (104%)	177 (99%)	2 (1%)	73	40
All	All	341/344 (99%)	336 (98%)	5 (2%)	65	28

All (5) residues with a non-rotameric sidechain are listed below:

Mol	Chain	Res	Type
1	A	54	ARG
1	A	153	SER
1	A	154	ASP
2	B	103	PHE
2	B	165	ASP

Some sidechains can be flipped to improve hydrogen bonding and reduce clashes. All (4) such sidechains are listed below:

Mol	Chain	Res	Type
1	A	83	GLN
2	B	21	ASN
2	B	34	HIS
2	B	155	HIS

### 5.3.3 RNA [i](#)

There are no RNA molecules in this entry.

## 5.4 Non-standard residues in protein, DNA, RNA chains [i](#)

2 non-standard protein/DNA/RNA residues are modelled in this entry.

In the following table, the Counts columns list the number of bonds (or angles) for which Mogul statistics could be retrieved, the number of bonds (or angles) that are observed in the model and the number of bonds (or angles) that are defined in the Chemical Component Dictionary. The Link column lists molecule types, if any, to which the group is linked. The Z score for a bond length (or angle) is the number of standard deviations the observed value is removed from the expected value. A bond length (or angle) with  $|Z| > 2$  is considered an outlier worth inspection. RMSZ is the root-mean-square of all Z scores of the bond lengths (or angles).

Mol	Type	Chain	Res	Link	Bond lengths			Bond angles		
					Counts	RMSZ	$\# Z  > 2$	Counts	RMSZ	$\# Z  > 2$
1	CSD	A	112	1,3	3,7,8	0.62	0	1,8,10	1.23	0
1	CSO	A	114	1,3	3,6,7	0.96	0	0,6,8	0.00	-

In the following table, the Chirals column lists the number of chiral outliers, the number of chiral centers analysed, the number of these observed in the model and the number defined in the Chemical Component Dictionary. Similar counts are reported in the Torsion and Rings columns. '-' means no outliers of that kind were identified.

Mol	Type	Chain	Res	Link	Chirals	Torsions	Rings
1	CSD	A	112	1,3	-	1/2/6/8	-
1	CSO	A	114	1,3	-	0/1/5/7	-

There are no bond length outliers.

There are no bond angle outliers.

There are no chirality outliers.

All (1) torsion outliers are listed below:

Mol	Chain	Res	Type	Atoms
1	A	112	CSD	CA-CB-SG-OD1

There are no ring outliers.

1 monomer is involved in 3 short contacts:

Mol	Chain	Res	Type	Clashes	Symm-Clashes
1	A	114	CSO	3	0

## 5.5 Carbohydrates [i](#)

There are no carbohydrates in this entry.

## 5.6 Ligand geometry [i](#)

Of 5 ligands modelled in this entry, 4 are monoatomic - leaving 1 for Mogul analysis.

In the following table, the Counts columns list the number of bonds (or angles) for which Mogul statistics could be retrieved, the number of bonds (or angles) that are observed in the model and the number of bonds (or angles) that are defined in the Chemical Component Dictionary. The Link column lists molecule types, if any, to which the group is linked. The Z score for a bond length (or angle) is the number of standard deviations the observed value is removed from the expected value. A bond length (or angle) with  $|Z| > 2$  is considered an outlier worth inspection. RMSZ is the root-mean-square of all Z scores of the bond lengths (or angles).

Mol	Type	Chain	Res	Link	Bond lengths			Bond angles		
					Counts	RMSZ	# Z  > 2	Counts	RMSZ	# Z  > 2
5	TAN	A	303	3	5,5,5	2.70	4 (80%)	7,7,7	6.96	4 (57%)

In the following table, the Chirals column lists the number of chiral outliers, the number of chiral centers analysed, the number of these observed in the model and the number defined in the Chemical Component Dictionary. Similar counts are reported in the Torsion and Rings columns. '-' means no outliers of that kind were identified.

Mol	Type	Chain	Res	Link	Chirals	Torsions	Rings
5	TAN	A	303	3	-	0/0/3/3	-

All (4) bond length outliers are listed below:

Mol	Chain	Res	Type	Atoms	Z	Observed(Å)	Ideal(Å)
5	A	303	TAN	C1-C2	3.43	1.67	1.52
5	A	303	TAN	C2-C	-3.18	1.37	1.46
5	A	303	TAN	C3-C2	-3.02	1.38	1.52
5	A	303	TAN	C4-C2	2.30	1.62	1.52

All (4) bond angle outliers are listed below:

Mol	Chain	Res	Type	Atoms	Z	Observed(°)	Ideal(°)
5	A	303	TAN	C3-C2-C	15.88	143.45	108.30
5	A	303	TAN	C1-C2-C	-6.90	93.03	108.30
5	A	303	TAN	C4-C2-C	-5.45	96.22	108.30
5	A	303	TAN	C4-C2-C1	-2.63	98.28	109.59

There are no chirality outliers.

There are no torsion outliers.

There are no ring outliers.

1 monomer is involved in 3 short contacts:

Mol	Chain	Res	Type	Clashes	Symm-Clashes
5	A	303	TAN	3	0

## 5.7 Other polymers [i](#)

There are no such residues in this entry.

## 5.8 Polymer linkage issues [i](#)

There are no chain breaks in this entry.

## 6 Fit of model and data [i](#)

### 6.1 Protein, DNA and RNA chains [i](#)

In the following table, the column labelled ‘#RSRZ> 2’ contains the number (and percentage) of RSRZ outliers, followed by percent RSRZ outliers for the chain as percentile scores relative to all X-ray entries and entries of similar resolution. The OWAB column contains the minimum, median, 95<sup>th</sup> percentile and maximum values of the occupancy-weighted average B-factor per residue. The column labelled ‘Q< 0.9’ lists the number of (and percentage) of residues with an average occupancy less than 0.9.

Mol	Chain	Analysed	<RSRZ>	#RSRZ>2	OWAB(Å <sup>2</sup> )	Q<0.9
1	A	194/207 (93%)	0.14	8 (4%) 37 39	13, 19, 29, 69	2 (1%)
2	B	212/212 (100%)	0.12	7 (3%) 46 48	13, 18, 28, 82	0
All	All	406/419 (96%)	0.13	15 (3%) 41 43	13, 18, 29, 82	2 (0%)

All (15) RSRZ outliers are listed below:

Mol	Chain	Res	Type	RSRZ
2	B	212	ALA	10.6
1	A	205	THR	8.1
2	B	118	VAL	6.3
1	A	11	ALA	5.5
1	A	154	ASP	3.1
1	A	152	ALA	3.0
2	B	196	GLY	2.7
1	A	204	PRO	2.7
2	B	119	GLU	2.5
1	A	60	VAL	2.4
2	B	45	ALA	2.4
1	A	153	SER	2.3
1	A	12	ALA	2.2
2	B	203	LEU	2.2
2	B	211	ALA	2.1

### 6.2 Non-standard residues in protein, DNA, RNA chains [i](#)

In the following table, the Atoms column lists the number of modelled atoms in the group and the number defined in the chemical component dictionary. The B-factors column lists the minimum, median, 95<sup>th</sup> percentile and maximum values of B factors of atoms in the group. The column labelled ‘Q< 0.9’ lists the number of atoms with occupancy less than 0.9.

Mol	Type	Chain	Res	Atoms	RSCC	RSR	B-factors( $\text{\AA}^2$ )	Q<0.9
1	CSD	A	112	8/9	0.99	0.05	12,13,13,13	0
1	CSO	A	114	7/8	0.99	0.06	13,13,14,19	0

### 6.3 Carbohydrates [i](#)

There are no carbohydrates in this entry.

### 6.4 Ligands [i](#)

In the following table, the Atoms column lists the number of modelled atoms in the group and the number defined in the chemical component dictionary. The B-factors column lists the minimum, median, 95<sup>th</sup> percentile and maximum values of B factors of atoms in the group. The column labelled 'Q< 0.9' lists the number of atoms with occupancy less than 0.9.

Mol	Type	Chain	Res	Atoms	RSCC	RSR	B-factors( $\text{\AA}^2$ )	Q<0.9
5	TAN	A	303	6/6	0.93	0.10	12,18,20,21	0
4	MG	B	302	1/1	0.95	0.12	22,22,22,22	1
4	MG	B	301	1/1	0.96	0.15	15,15,15,15	1
4	MG	A	302	1/1	0.98	0.13	21,21,21,21	1
3	FE	A	301	1/1	1.00	0.05	12,12,12,12	0

### 6.5 Other polymers [i](#)

There are no such residues in this entry.