



Full wwPDB X-ray Structure Validation Report ⓘ

Aug 6, 2020 – 08:22 AM BST

PDB ID : 3WLL
Title : Crystal structure of barley beta-D-glucan glucohydrolase isoenzyme EXO1 in complex with PEG400
Authors : Streltsov, V.A.; Hrmova, M.
Deposited on : 2013-11-12
Resolution : 1.80 Å(reported)

This is a Full wwPDB X-ray Structure Validation Report for a publicly released PDB entry.

We welcome your comments at validation@mail.wwpdb.org

A user guide is available at

<https://www.wwpdb.org/validation/2017/XrayValidationReportHelp>

with specific help available everywhere you see the ⓘ symbol.

The following versions of software and data (see [references ⓘ](#)) were used in the production of this report:

MolProbity : 4.02b-467
Mogul : 1.8.5 (274361), CSD as541be (2020)
Xtriage (Phenix) : 1.13
EDS : 2.13.1
Percentile statistics : 20191225.v01 (using entries in the PDB archive December 25th 2019)
Refmac : 5.8.0158
CCP4 : 7.0.044 (Gargrove)
Ideal geometry (proteins) : Engh & Huber (2001)
Ideal geometry (DNA, RNA) : Parkinson et al. (1996)
Validation Pipeline (wwPDB-VP) : 2.13.1

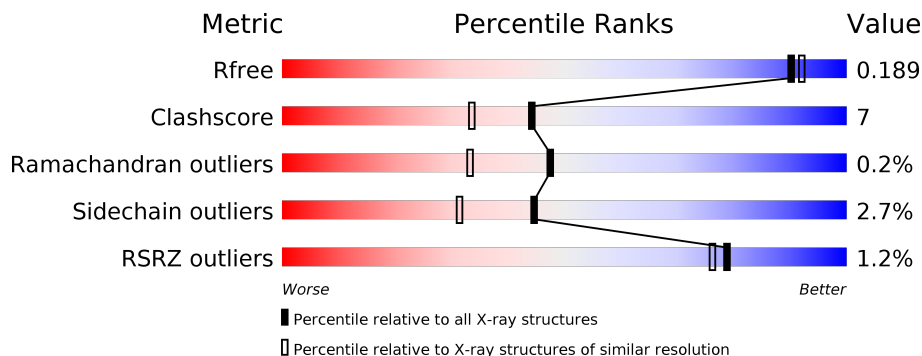
1 Overall quality at a glance

The following experimental techniques were used to determine the structure:

X-RAY DIFFRACTION

The reported resolution of this entry is 1.80 Å.

Percentile scores (ranging between 0-100) for global validation metrics of the entry are shown in the following graphic. The table shows the number of entries on which the scores are based.



Metric	Whole archive (#Entries)	Similar resolution (#Entries, resolution range(Å))
R_{free}	130704	5950 (1.80-1.80)
Clashscore	141614	6793 (1.80-1.80)
Ramachandran outliers	138981	6697 (1.80-1.80)
Sidechain outliers	138945	6696 (1.80-1.80)
RSRZ outliers	127900	5850 (1.80-1.80)

The table below summarises the geometric issues observed across the polymeric chains and their fit to the electron density. The red, orange, yellow and green segments on the lower bar indicate the fraction of residues that contain outliers for ≥ 3 , 2, 1 and 0 types of geometric quality criteria respectively. A grey segment represents the fraction of residues that are not modelled. The numeric value for each fraction is indicated below the corresponding segment, with a dot representing fractions $\leq 5\%$. The upper red bar (where present) indicates the fraction of residues that have poor fit to the electron density. The numeric value is given above the bar.

Mol	Chain	Length	Quality of chain
1	A	605	 89% 9%
2	B	3	 67% 33%
3	C	7	 14% 71% 14%
4	D	5	 60% 40%

2 Entry composition i

There are 9 unique types of molecules in this entry. The entry contains 5707 atoms, of which 0 are hydrogens and 0 are deuteriums.

In the tables below, the ZeroOcc column contains the number of atoms modelled with zero occupancy, the AltConf column contains the number of residues with at least one atom in alternate conformation and the Trace column contains the number of residues modelled with at most 2 atoms.

- Molecule 1 is a protein called Beta-D-glucan exohydrolase isoenzyme ExoI.

Mol	Chain	Residues	Atoms					ZeroOcc	AltConf	Trace
			Total	C	N	O	S			
1	A	602	4566	2891	787	862	26	0	0	0

There is a discrepancy between the modelled and reference sequences:

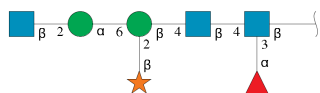
Chain	Residue	Modelled	Actual	Comment	Reference
A	320	LYS	ASN	SEE REMARK 999	UNP Q9XEI3

- Molecule 2 is an oligosaccharide called beta-D-mannopyranose-(1-4)-2-acetamido-2-deoxy-beta-D-glucopyranose-(1-4)-2-acetamido-2-deoxy-beta-D-glucopyranose.



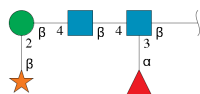
Mol	Chain	Residues	Atoms				ZeroOcc	AltConf	Trace
			Total	C	N	O			
2	B	3	39	22	2	15	0	0	0

- Molecule 3 is an oligosaccharide called 2-acetamido-2-deoxy-beta-D-glucopyranose-(1-2)-alpha-D-mannopyranose-(1-6)-[beta-D-xylopyranose-(1-2)]beta-D-mannopyranose-(1-4)-2-acetamido-2-deoxy-beta-D-glucopyranose-(1-4)-[alpha-L-fucopyranose-(1-3)]2-acetamido-2-deoxy-beta-D-glucopyranose.



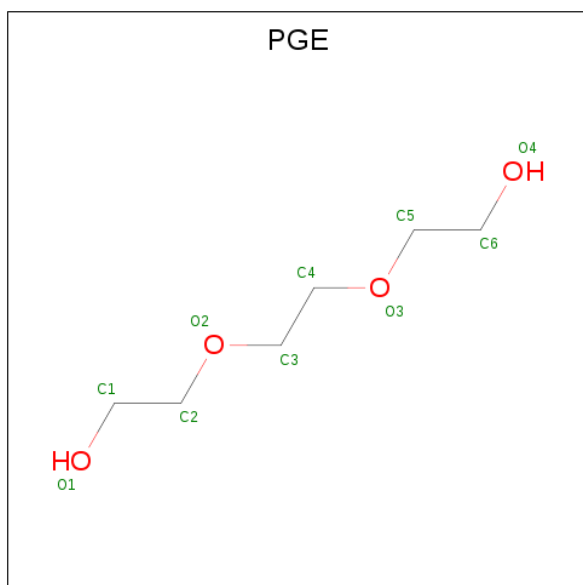
Mol	Chain	Residues	Atoms				ZeroOcc	AltConf	Trace
			Total	C	N	O			
3	C	7	83	47	3	33	0	0	0

- Molecule 4 is an oligosaccharide called beta-D-xylopyranose-(1-2)-beta-D-mannopyranose-(1-4)-2-acetamido-2-deoxy-beta-D-glucopyranose-(1-4)-[alpha-L-fucopyranose-(1-3)]2-acetamido-2-deoxy-beta-D-glucopyranose.



Mol	Chain	Residues	Atoms				ZeroOcc	AltConf	Trace
			Total	C	N	O			
4	D	5	58	33	2	23	0	0	0

- Molecule 5 is TRIETHYLENE GLYCOL (three-letter code: PGE) (formula: C₆H₁₄O₄).



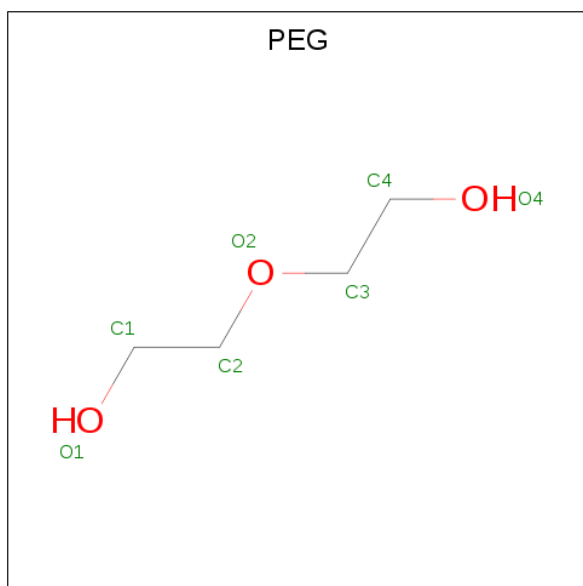
Mol	Chain	Residues	Atoms			ZeroOcc	AltConf
			Total	C	O		
5	A	1	14	8	6	0	1
5	A	1	10	6	4	0	0

- Molecule 6 is 1,2-ETHANEDIOL (three-letter code: EDO) (formula: C₂H₆O₂).



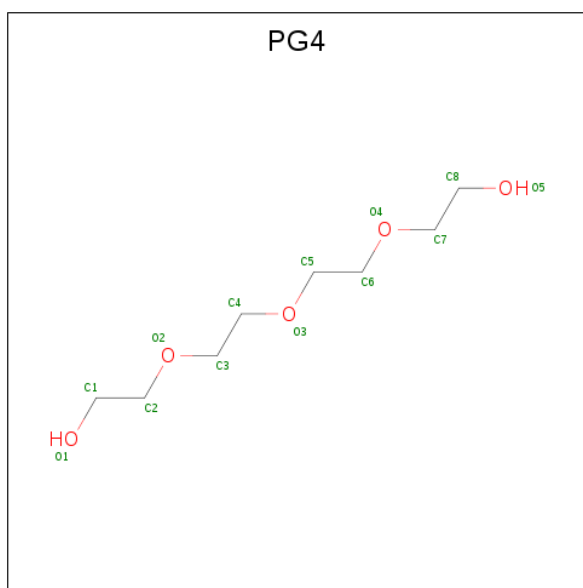
Mol	Chain	Residues	Atoms			ZeroOcc	AltConf
6	A	1	Total	C	O	0	0
			4	2	2		
6	A	1	Total	C	O	0	0
			4	2	2		

- Molecule 7 is DI(HYDROXYETHYL)ETHER (three-letter code: PEG) (formula: $C_4H_{10}O_3$).



Mol	Chain	Residues	Atoms			ZeroOcc	AltConf
7	A	1	Total	C	O	0	0
			7	4	3		
7	A	1	Total	C	O	0	0
			7	4	3		

- Molecule 8 is TETRAETHYLENE GLYCOL (three-letter code: PG4) (formula: C₈H₁₈O₅).



Mol	Chain	Residues	Atoms	ZeroOcc	AltConf
8	A	1	Total C O 13 8 5	0	0
8	A	1	Total C O 19 12 7	0	1

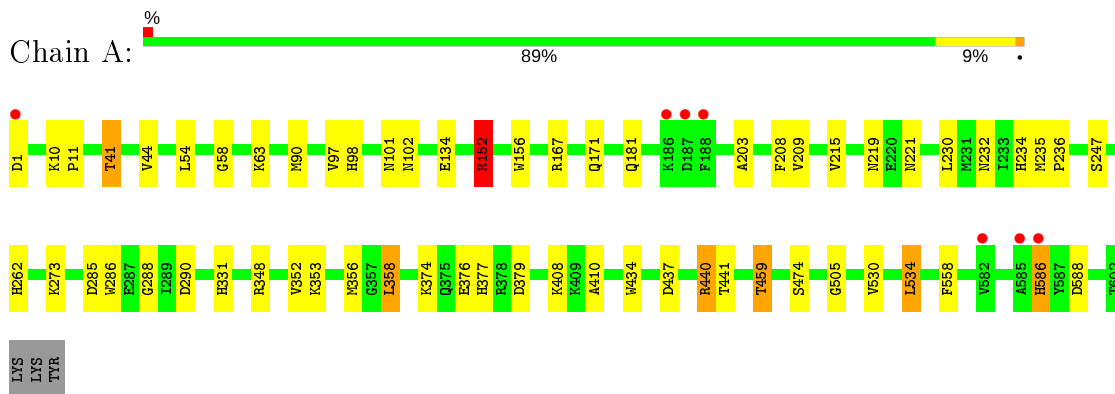
- Molecule 9 is water.

Mol	Chain	Residues	Atoms	ZeroOcc	AltConf
9	A	883	Total O 883 883	0	0

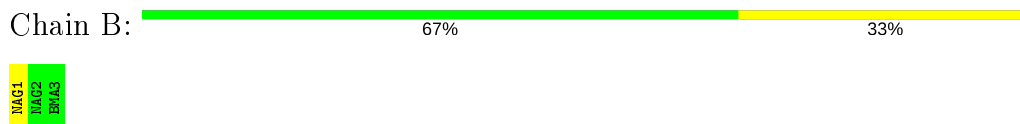
3 Residue-property plots [i](#)

These plots are drawn for all protein, RNA, DNA and oligosaccharide chains in the entry. The first graphic for a chain summarises the proportions of the various outlier classes displayed in the second graphic. The second graphic shows the sequence view annotated by issues in geometry and electron density. Residues are color-coded according to the number of geometric quality criteria for which they contain at least one outlier: green = 0, yellow = 1, orange = 2 and red = 3 or more. A red dot above a residue indicates a poor fit to the electron density ($RSRZ > 2$). Stretches of 2 or more consecutive residues without any outlier are shown as a green connector. Residues present in the sample, but not in the model, are shown in grey.

- Molecule 1: Beta-D-glucan exohydrolase isoenzyme ExoI



- Molecule 2: beta-D-mannopyranose-(1-4)-2-acetamido-2-deoxy-beta-D-glucopyranose-(1-4)-2-acetamido-2-deoxy-beta-D-glucopyranose



- Molecule 3: 2-acetamido-2-deoxy-beta-D-glucopyranose-(1-2)-alpha-D-mannopyranose-(1-6)-[beta-D-xylopyranose-(1-2)]beta-D-mannopyranose-(1-4)-2-acetamido-2-deoxy-beta-D-glucopyranose-(1-4)-[alpha-L-fucopyranose-(1-3)]2-acetamido-2-deoxy-beta-D-glucopyranose



- Molecule 4: beta-D-xylopyranose-(1-2)-beta-D-mannopyranose-(1-4)-2-acetamido-2-deoxy-beta-D-glucopyranose-(1-4)-[alpha-L-fucopyranose-(1-3)]2-acetamido-2-deoxy-beta-D-glucopyranose



4 Data and refinement statistics

Property	Value	Source
Space group	P 43 21 2	Depositor
Cell constants a, b, c, α , β , γ	100.27Å 100.27Å 181.69Å 90.00° 90.00° 90.00°	Depositor
Resolution (Å)	48.33 – 1.80 48.33 – 1.80	Depositor EDS
% Data completeness (in resolution range)	99.2 (48.33-1.80) 99.2 (48.33-1.80)	Depositor EDS
R_{merge}	(Not available)	Depositor
R_{sym}	(Not available)	Depositor
$\langle I/\sigma(I) \rangle$ ¹	1.21 (at 1.79Å)	Xtrriage
Refinement program	REFMAC 5.2.0011	Depositor
R, R_{free}	0.161 , 0.191 0.160 , 0.189	Depositor DCC
R_{free} test set	4285 reflections (5.00%)	wwPDB-VP
Wilson B-factor (Å ²)	24.5	Xtrriage
Anisotropy	0.029	Xtrriage
Bulk solvent k_{sol} (e/Å ³), B_{sol} (Å ²)	0.37 , 66.5	EDS
L-test for twinning ²	$\langle L \rangle = 0.49$, $\langle L^2 \rangle = 0.32$	Xtrriage
Estimated twinning fraction	No twinning to report.	Xtrriage
F_o, F_c correlation	0.97	EDS
Total number of atoms	5707	wwPDB-VP
Average B, all atoms (Å ²)	30.0	wwPDB-VP

Xtrriage's analysis on translational NCS is as follows: *The largest off-origin peak in the Patterson function is 3.71% of the height of the origin peak. No significant pseudotranslation is detected.*

¹Intensities estimated from amplitudes.

²Theoretical values of $\langle |L| \rangle$, $\langle L^2 \rangle$ for acentric reflections are 0.5, 0.333 respectively for untwinned datasets, and 0.375, 0.2 for perfectly twinned datasets.

5 Model quality [i](#)

5.1 Standard geometry [i](#)

Bond lengths and bond angles in the following residue types are not validated in this section: XYP, BMA, NAG, EDO, PG4, PGE, FUC, PEG, MAN

The Z score for a bond length (or angle) is the number of standard deviations the observed value is removed from the expected value. A bond length (or angle) with $|Z| > 5$ is considered an outlier worth inspection. RMSZ is the root-mean-square of all Z scores of the bond lengths (or angles).

Mol	Chain	Bond lengths		Bond angles	
		RMSZ	# Z >5	RMSZ	# Z >5
1	A	0.53	0/4663	0.60	1/6334 (0.0%)

There are no bond length outliers.

All (1) bond angle outliers are listed below:

Mol	Chain	Res	Type	Atoms	Z	Observed($^{\circ}$)	Ideal($^{\circ}$)
1	A	152	ARG	NE-CZ-NH2	-6.67	116.97	120.30

There are no chirality outliers.

There are no planarity outliers.

5.2 Too-close contacts [i](#)

In the following table, the Non-H and H(model) columns list the number of non-hydrogen atoms and hydrogen atoms in the chain respectively. The H(added) column lists the number of hydrogen atoms added and optimized by MolProbity. The Clashes column lists the number of clashes within the asymmetric unit, whereas Symm-Clashes lists symmetry related clashes.

Mol	Chain	Non-H	H(model)	H(added)	Clashes	Symm-Clashes
1	A	4566	0	4550	57	0
2	B	39	0	34	0	0
3	C	83	0	63	5	0
4	D	58	0	42	0	0
5	A	24	0	28	2	0
6	A	8	0	12	2	0
7	A	14	0	20	0	0
8	A	32	0	36	4	0
9	A	883	0	0	23	4
All	All	5707	0	4785	63	4

The all-atom clashscore is defined as the number of clashes found per 1000 atoms (including hydrogen atoms). The all-atom clashscore for this structure is 7.

All (63) close contacts within the same asymmetric unit are listed below, sorted by their clash magnitude.

Atom-1	Atom-2	Interatomic distance (Å)	Clash overlap (Å)
1:A:356:MET:SD	9:A:1183:HOH:O	2.00	1.17
1:A:352:VAL:HG12	1:A:356:MET:CE	1.91	0.99
1:A:352:VAL:HG12	1:A:356:MET:HE3	1.46	0.98
1:A:167:ARG:HH11	1:A:171:GLN:HE22	1.12	0.94
1:A:41:THR:HG22	1:A:44:VAL:H	1.36	0.91
1:A:273:LYS:HG2	9:A:1387:HOH:O	1.71	0.89
1:A:410:ALA:O	1:A:459:THR:HB	1.74	0.85
1:A:156:TRP:HE1	1:A:219:ASN:HD22	1.24	0.81
1:A:181:GLN:HE21	1:A:203:ALA:H	1.29	0.81
9:A:1626:HOH:O	3:C:7:FUC:H63	1.79	0.81
1:A:474:SER:HB3	9:A:958:HOH:O	1.79	0.80
1:A:167:ARG:HH11	1:A:171:GLN:NE2	1.80	0.79
1:A:41:THR:HG21	9:A:1379:HOH:O	1.84	0.77
1:A:352:VAL:CG1	1:A:356:MET:CE	2.65	0.74
1:A:379:ASP:OD1	9:A:959:HOH:O	2.07	0.73
1:A:221:ASN:HB3	9:A:1409:HOH:O	1.88	0.73
1:A:58:GLY:H	1:A:102:ASN:ND2	1.90	0.70
1:A:97:VAL:H	1:A:101:ASN:HD21	1.38	0.70
1:A:167:ARG:NH1	1:A:171:GLN:HE22	1.87	0.69
1:A:215:VAL:HG12	9:A:1409:HOH:O	1.95	0.65
1:A:215:VAL:HB	9:A:1586:HOH:O	1.97	0.65
1:A:262:HIS:HE1	1:A:285:ASP:H	1.46	0.63
1:A:10:LYS:HD2	8:A:722:PG4:H32	1.81	0.62
1:A:97:VAL:H	1:A:101:ASN:ND2	1.98	0.61
1:A:408:LYS:O	1:A:459:THR:HG21	2.03	0.58
1:A:10:LYS:NZ	8:A:722:PG4:H21	2.19	0.58
1:A:152:ARG:CD	9:A:909:HOH:O	2.53	0.57
1:A:152:ARG:HD3	9:A:909:HOH:O	2.05	0.57
1:A:286:TRP:CH2	5:A:716[A]:PGE:H3	2.40	0.57
1:A:262:HIS:CE1	1:A:285:ASP:H	2.22	0.56
1:A:348:ARG:NH1	9:A:1387:HOH:O	2.41	0.54
3:C:2:NAG:H82	3:C:4:MAN:O3	2.08	0.53
1:A:156:TRP:HE1	1:A:219:ASN:ND2	2.00	0.53
1:A:437:ASP:HB3	1:A:441:THR:HG21	1.90	0.53
1:A:374:LYS:HD3	1:A:376:GLU:OE1	2.08	0.52
1:A:331:HIS:HD2	9:A:1132:HOH:O	1.92	0.52
1:A:234:HIS:HE1	9:A:988:HOH:O	1.93	0.51

Continued on next page...

Continued from previous page...

Atom-1	Atom-2	Interatomic distance (Å)	Clash overlap (Å)
1:A:63:LYS:HG2	9:A:1597:HOH:O	2.11	0.51
1:A:1:ASP:N	9:A:1422:HOH:O	2.44	0.51
1:A:440:ARG:NH1	9:A:931:HOH:O	2.43	0.51
1:A:558:PHE:HB2	9:A:1559:HOH:O	2.11	0.51
1:A:181:GLN:HE22	1:A:247:SER:H	1.60	0.50
6:A:719:EDO:O2	9:A:1237:HOH:O	2.19	0.50
1:A:11:PRO:HD3	8:A:722:PG4:H12	1.94	0.49
1:A:530:VAL:HG13	1:A:534:LEU:HD22	1.94	0.49
1:A:58:GLY:H	1:A:102:ASN:HD21	1.59	0.49
1:A:10:LYS:HZ2	8:A:722:PG4:H21	1.77	0.49
1:A:586:HIS:C	1:A:586:HIS:ND1	2.65	0.48
1:A:434:TRP:HE3	6:A:719:EDO:H22	1.80	0.46
1:A:181:GLN:NE2	1:A:203:ALA:H	2.06	0.46
1:A:134:GLU:OE2	1:A:377:HIS:HD2	1.98	0.46
1:A:152:ARG:HD2	9:A:909:HOH:O	2.16	0.44
1:A:235:MET:N	1:A:236:PRO:CD	2.81	0.44
1:A:181:GLN:HE22	1:A:247:SER:N	2.16	0.43
1:A:377:HIS:HE1	9:A:885:HOH:O	2.01	0.43
9:A:1363:HOH:O	3:C:2:NAG:H83	2.18	0.43
1:A:262:HIS:CE1	1:A:288:GLY:HA3	2.54	0.43
1:A:353:LYS:HG2	1:A:358:LEU:HD12	2.01	0.42
3:C:2:NAG:O5	3:C:7:FUC:H5	2.20	0.41
9:A:1094:HOH:O	3:C:2:NAG:H81	2.20	0.41
1:A:286:TRP:CH2	5:A:716[B]:PGE:H3	2.56	0.41
1:A:208:PHE:HA	1:A:209:VAL:HA	1.91	0.40
1:A:586:HIS:HE1	1:A:588:ASP:HB3	1.86	0.40

All (4) symmetry-related close contacts are listed below. The label for Atom-2 includes the symmetry operator and encoded unit-cell translations to be applied.

Atom-1	Atom-2	Interatomic distance (Å)	Clash overlap (Å)
9:A:1220:HOH:O	9:A:1675:HOH:O[6_455]	1.98	0.22
9:A:1018:HOH:O	9:A:1675:HOH:O[6_455]	2.08	0.12
9:A:859:HOH:O	9:A:1151:HOH:O[6_455]	2.10	0.10
9:A:859:HOH:O	9:A:890:HOH:O[6_455]	2.11	0.09

5.3 Torsion angles [i](#)

5.3.1 Protein backbone [i](#)

In the following table, the Percentiles column shows the percent Ramachandran outliers of the chain as a percentile score with respect to all X-ray entries followed by that with respect to entries of similar resolution.

The Analysed column shows the number of residues for which the backbone conformation was analysed, and the total number of residues.

Mol	Chain	Analysed	Favoured	Allowed	Outliers	Percentiles
1	A	600/605 (99%)	581 (97%)	18 (3%)	1 (0%)	47 33

All (1) Ramachandran outliers are listed below:

Mol	Chain	Res	Type
1	A	505	GLY

5.3.2 Protein sidechains [i](#)

In the following table, the Percentiles column shows the percent sidechain outliers of the chain as a percentile score with respect to all X-ray entries followed by that with respect to entries of similar resolution.

The Analysed column shows the number of residues for which the sidechain conformation was analysed, and the total number of residues.

Mol	Chain	Analysed	Rotameric	Outliers	Percentiles
1	A	485/488 (99%)	472 (97%)	13 (3%)	44 31

All (13) residues with a non-rotameric sidechain are listed below:

Mol	Chain	Res	Type
1	A	41	THR
1	A	54	LEU
1	A	90	MET
1	A	98	HIS
1	A	152	ARG
1	A	230	LEU
1	A	232	ASN
1	A	290	ASP
1	A	358	LEU
1	A	440	ARG

Continued on next page...

Continued from previous page...

Mol	Chain	Res	Type
1	A	459	THR
1	A	534	LEU
1	A	586	HIS

Some sidechains can be flipped to improve hydrogen bonding and reduce clashes. All (11) such sidechains are listed below:

Mol	Chain	Res	Type
1	A	101	ASN
1	A	102	ASN
1	A	171	GLN
1	A	181	GLN
1	A	199	ASN
1	A	219	ASN
1	A	234	HIS
1	A	262	HIS
1	A	265	GLN
1	A	331	HIS
1	A	377	HIS

5.3.3 RNA [i](#)

There are no RNA molecules in this entry.

5.4 Non-standard residues in protein, DNA, RNA chains [i](#)

There are no non-standard protein/DNA/RNA residues in this entry.

5.5 Carbohydrates [i](#)

15 monosaccharides are modelled in this entry.

In the following table, the Counts columns list the number of bonds (or angles) for which Mogul statistics could be retrieved, the number of bonds (or angles) that are observed in the model and the number of bonds (or angles) that are defined in the Chemical Component Dictionary. The Link column lists molecule types, if any, to which the group is linked. The Z score for a bond length (or angle) is the number of standard deviations the observed value is removed from the expected value. A bond length (or angle) with $|Z| > 2$ is considered an outlier worth inspection. RMSZ is the root-mean-square of all Z scores of the bond lengths (or angles).

Mol	Type	Chain	Res	Link	Bond lengths			Bond angles		
					Counts	RMSZ	# Z > 2	Counts	RMSZ	# Z > 2
2	NAG	B	1	1,2	14,14,15	0.60	0	17,19,21	1.00	1 (5%)
2	NAG	B	2	2	14,14,15	0.52	0	17,19,21	0.78	0
2	BMA	B	3	2	11,11,12	0.59	0	15,15,17	0.73	0
3	NAG	C	1	1,3	14,14,15	0.51	0	17,19,21	1.01	1 (5%)
3	NAG	C	2	3	14,14,15	0.64	0	17,19,21	1.01	0
3	BMA	C	3	3	11,11,12	0.57	0	15,15,17	0.70	0
3	MAN	C	4	3	11,11,12	0.58	0	15,15,17	0.81	0
3	NAG	C	5	3	14,14,15	0.45	0	17,19,21	0.91	1 (5%)
3	XYP	C	6	3	9,9,10	1.11	1 (11%)	10,12,14	0.96	1 (10%)
3	FUC	C	7	3	10,10,11	0.59	0	14,14,16	0.67	1 (7%)
4	NAG	D	1	1,4	14,14,15	0.59	0	17,19,21	0.79	0
4	NAG	D	2	4	14,14,15	0.49	0	17,19,21	0.87	1 (5%)
4	BMA	D	3	4	11,11,12	0.54	0	15,15,17	0.72	0
4	XYP	D	4	4	9,9,10	1.21	1 (11%)	10,12,14	0.93	1 (10%)
4	FUC	D	5	4	10,10,11	0.61	0	14,14,16	0.77	0

In the following table, the Chirals column lists the number of chiral outliers, the number of chiral centers analysed, the number of these observed in the model and the number defined in the Chemical Component Dictionary. Similar counts are reported in the Torsion and Rings columns. '-' means no outliers of that kind were identified.

Mol	Type	Chain	Res	Link	Chirals	Torsions	Rings
2	NAG	B	1	1,2	-	0/6/23/26	0/1/1/1
2	NAG	B	2	2	-	2/6/23/26	0/1/1/1
2	BMA	B	3	2	-	1/2/19/22	0/1/1/1
3	NAG	C	1	1,3	-	0/6/23/26	0/1/1/1
3	NAG	C	2	3	-	2/6/23/26	0/1/1/1
3	BMA	C	3	3	-	1/2/19/22	0/1/1/1
3	MAN	C	4	3	-	0/2/19/22	0/1/1/1
3	NAG	C	5	3	-	0/6/23/26	0/1/1/1
3	XYP	C	6	3	-	-	0/1/1/1
3	FUC	C	7	3	-	-	0/1/1/1
4	NAG	D	1	1,4	-	0/6/23/26	0/1/1/1
4	NAG	D	2	4	-	0/6/23/26	0/1/1/1
4	BMA	D	3	4	-	2/2/19/22	0/1/1/1
4	XYP	D	4	4	-	-	0/1/1/1
4	FUC	D	5	4	-	-	0/1/1/1

All (2) bond length outliers are listed below:

Mol	Chain	Res	Type	Atoms	Z	Observed(Å)	Ideal(Å)
4	D	4	XYP	O5-C1	-3.19	1.36	1.42
3	C	6	XYP	O5-C1	-2.90	1.37	1.42

All (7) bond angle outliers are listed below:

Mol	Chain	Res	Type	Atoms	Z	Observed(°)	Ideal(°)
2	B	1	NAG	C1-O5-C5	3.36	116.74	112.19
3	C	1	NAG	C1-O5-C5	2.58	115.69	112.19
3	C	5	NAG	C1-O5-C5	2.52	115.60	112.19
4	D	4	XYP	C5-O5-C1	2.46	115.30	111.52
3	C	6	XYP	C5-O5-C1	2.40	115.22	111.52
4	D	2	NAG	C1-O5-C5	2.34	115.36	112.19
3	C	7	FUC	O5-C5-C6	2.09	111.83	107.33

There are no chirality outliers.

All (8) torsion outliers are listed below:

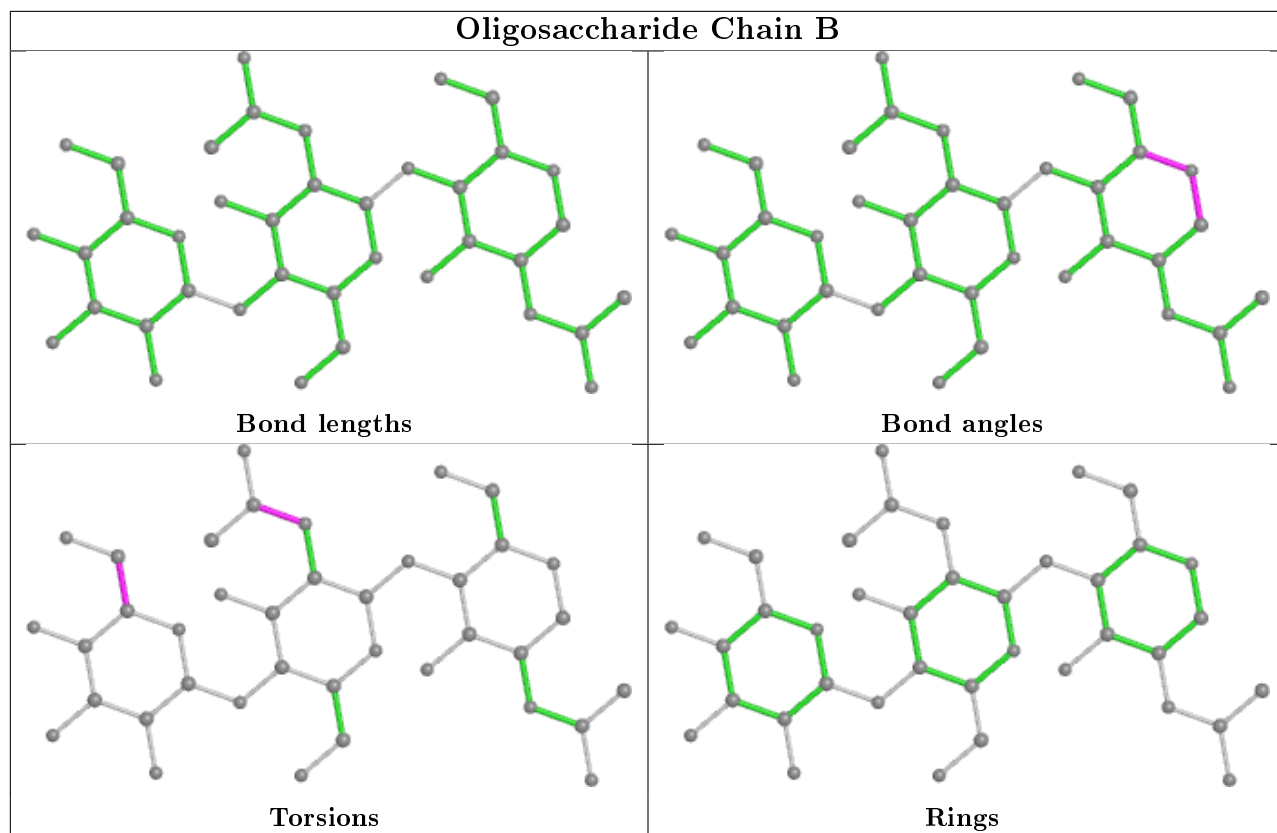
Mol	Chain	Res	Type	Atoms
3	C	2	NAG	C8-C7-N2-C2
3	C	2	NAG	O7-C7-N2-C2
3	C	3	BMA	O5-C5-C6-O6
4	D	3	BMA	C4-C5-C6-O6
2	B	2	NAG	C8-C7-N2-C2
4	D	3	BMA	O5-C5-C6-O6
2	B	2	NAG	O7-C7-N2-C2
2	B	3	BMA	C4-C5-C6-O6

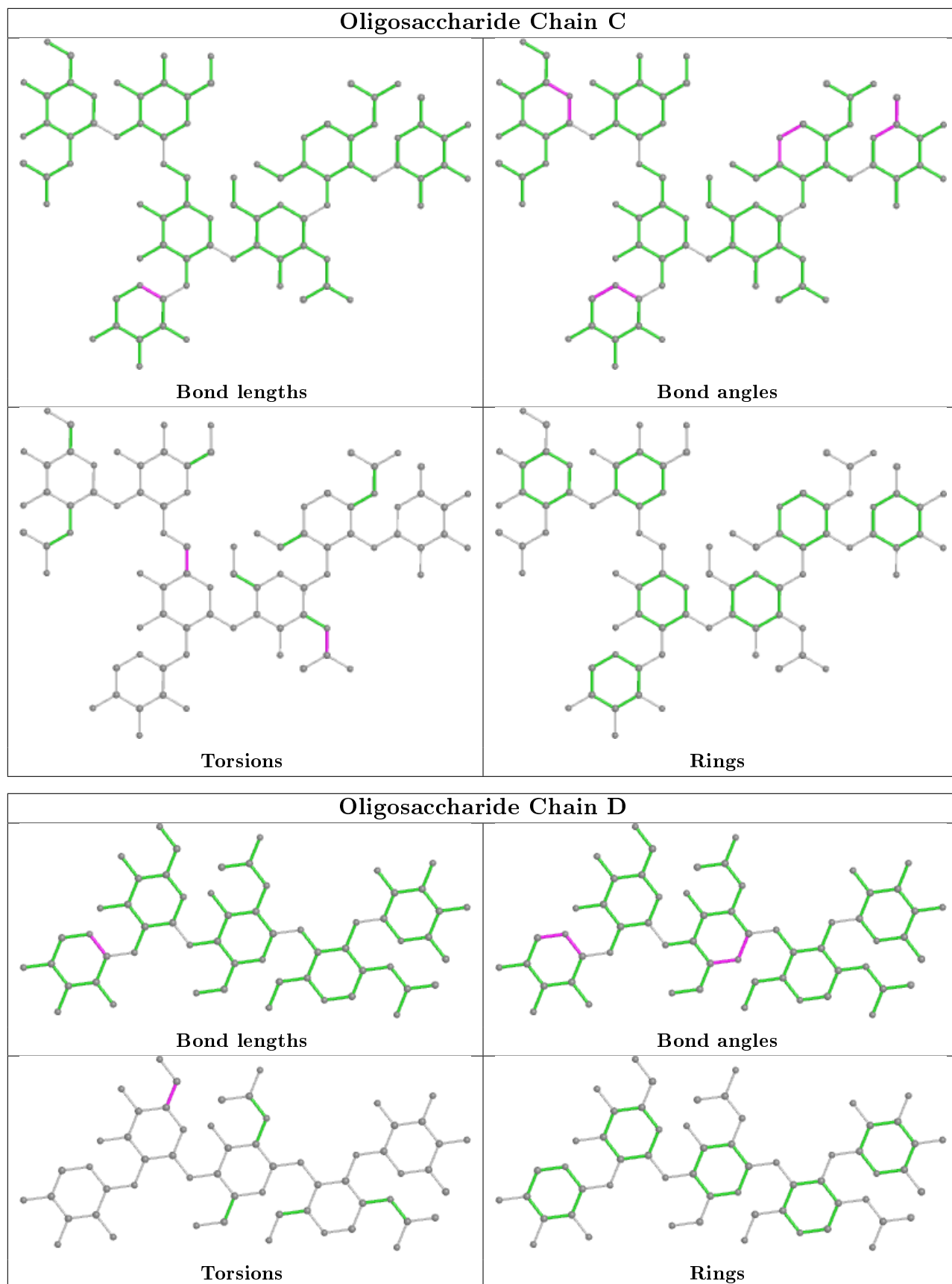
There are no ring outliers.

3 monomers are involved in 5 short contacts:

Mol	Chain	Res	Type	Clashes	Symm-Clashes
3	C	7	FUC	2	0
3	C	2	NAG	4	0
3	C	4	MAN	1	0

The following is a two-dimensional graphical depiction of Mogul quality analysis of bond lengths, bond angles, torsion angles, and ring geometry for oligosaccharide.





5.6 Ligand geometry

10 ligands are modelled in this entry.

In the following table, the Counts columns list the number of bonds (or angles) for which Mogul statistics could be retrieved, the number of bonds (or angles) that are observed in the model and the number of bonds (or angles) that are defined in the Chemical Component Dictionary. The Link column lists molecule types, if any, to which the group is linked. The Z score for a bond length (or angle) is the number of standard deviations the observed value is removed from the expected value. A bond length (or angle) with $|Z| > 2$ is considered an outlier worth inspection. RMSZ is the root-mean-square of all Z scores of the bond lengths (or angles).

Mol	Type	Chain	Res	Link	Bond lengths			Bond angles		
					Counts	RMSZ	# Z > 2	Counts	RMSZ	# Z > 2
8	PG4	A	722	-	12,12,12	0.48	0	11,11,11	0.26	0
7	PEG	A	721	-	6,6,6	0.46	0	5,5,5	0.32	0
8	PG4	A	723[A]	-	12,12,12	0.47	0	11,11,11	0.21	0
7	PEG	A	720	-	6,6,6	0.42	0	5,5,5	0.36	0
6	EDO	A	718	-	3,3,3	0.45	0	2,2,2	0.30	0
8	PG4	A	723[B]	-	12,12,12	0.45	0	11,11,11	0.29	0
5	PGE	A	716[B]	-	9,9,9	0.45	0	8,8,8	0.28	0
6	EDO	A	719	-	3,3,3	0.33	0	2,2,2	0.51	0
5	PGE	A	716[A]	-	9,9,9	0.46	0	8,8,8	0.27	0
5	PGE	A	717	-	9,9,9	0.45	0	8,8,8	0.29	0

In the following table, the Chirals column lists the number of chiral outliers, the number of chiral centers analysed, the number of these observed in the model and the number defined in the Chemical Component Dictionary. Similar counts are reported in the Torsion and Rings columns. '-' means no outliers of that kind were identified.

Mol	Type	Chain	Res	Link	Chirals	Torsions	Rings
8	PG4	A	722	-	-	4/10/10/10	-
7	PEG	A	721	-	-	1/4/4/4	-
8	PG4	A	723[A]	-	-	5/10/10/10	-
7	PEG	A	720	-	-	2/4/4/4	-
6	EDO	A	718	-	-	1/1/1/1	-
8	PG4	A	723[B]	-	-	3/10/10/10	-
5	PGE	A	716[B]	-	-	4/7/7/7	-
6	EDO	A	719	-	-	1/1/1/1	-
5	PGE	A	716[A]	-	-	6/7/7/7	-
5	PGE	A	717	-	-	3/7/7/7	-

There are no bond length outliers.

There are no bond angle outliers.

There are no chirality outliers.

All (30) torsion outliers are listed below:

Mol	Chain	Res	Type	Atoms
8	A	722	PG4	O2-C3-C4-O3
8	A	723[B]	PG4	O3-C5-C6-O4
5	A	716[A]	PGE	O2-C3-C4-O3
5	A	716[A]	PGE	O1-C1-C2-O2
5	A	717	PGE	O3-C5-C6-O4
8	A	723[A]	PG4	O3-C5-C6-O4
5	A	716[B]	PGE	O1-C1-C2-O2
6	A	719	EDO	O1-C1-C2-O2
8	A	722	PG4	O1-C1-C2-O2
8	A	723[A]	PG4	O1-C1-C2-O2
8	A	723[B]	PG4	O1-C1-C2-O2
5	A	716[B]	PGE	O3-C5-C6-O4
5	A	716[A]	PGE	O3-C5-C6-O4
5	A	717	PGE	O2-C3-C4-O3
7	A	720	PEG	C1-C2-O2-C3
8	A	723[A]	PG4	C5-C6-O4-C7
5	A	716[B]	PGE	C3-C4-O3-C5
5	A	716[A]	PGE	C3-C4-O3-C5
8	A	722	PG4	C1-C2-O2-C3
5	A	716[A]	PGE	C1-C2-O2-C3
5	A	717	PGE	C4-C3-O2-C2
8	A	723[B]	PG4	C8-C7-O4-C6
6	A	718	EDO	O1-C1-C2-O2
8	A	723[A]	PG4	C8-C7-O4-C6
5	A	716[B]	PGE	C1-C2-O2-C3
8	A	723[A]	PG4	C3-C4-O3-C5
8	A	722	PG4	C5-C6-O4-C7
5	A	716[A]	PGE	C4-C3-O2-C2
7	A	721	PEG	O2-C3-C4-O4
7	A	720	PEG	O2-C3-C4-O4

There are no ring outliers.

4 monomers are involved in 8 short contacts:

Mol	Chain	Res	Type	Clashes	Symm-Clashes
8	A	722	PG4	4	0
5	A	716[B]	PGE	1	0
6	A	719	EDO	2	0
5	A	716[A]	PGE	1	0

5.7 Other polymers [i](#)

There are no such residues in this entry.

5.8 Polymer linkage issues [i](#)

There are no chain breaks in this entry.

6 Fit of model and data [i](#)

6.1 Protein, DNA and RNA chains [i](#)

In the following table, the column labelled '#RSRZ > 2' contains the number (and percentage) of RSRZ outliers, followed by percent RSRZ outliers for the chain as percentile scores relative to all X-ray entries and entries of similar resolution. The OWAB column contains the minimum, median, 95th percentile and maximum values of the occupancy-weighted average B-factor per residue. The column labelled 'Q < 0.9' lists the number of (and percentage) of residues with an average occupancy less than 0.9.

Mol	Chain	Analysed	<RSRZ>	#RSRZ>2	OWAB(Å ²)	Q<0.9
1	A	602/605 (99%)	-0.45	7 (1%) 79 76	16, 24, 38, 58	0

All (7) RSRZ outliers are listed below:

Mol	Chain	Res	Type	RSRZ
1	A	586	HIS	6.1
1	A	582	VAL	5.3
1	A	187	ASP	4.5
1	A	585	ALA	4.3
1	A	186	LYS	3.9
1	A	1	ASP	2.2
1	A	188	PHE	2.2

6.2 Non-standard residues in protein, DNA, RNA chains [i](#)

There are no non-standard protein/DNA/RNA residues in this entry.

6.3 Carbohydrates [i](#)

In the following table, the Atoms column lists the number of modelled atoms in the group and the number defined in the chemical component dictionary. The B-factors column lists the minimum, median, 95th percentile and maximum values of B factors of atoms in the group. The column labelled 'Q < 0.9' lists the number of atoms with occupancy less than 0.9.

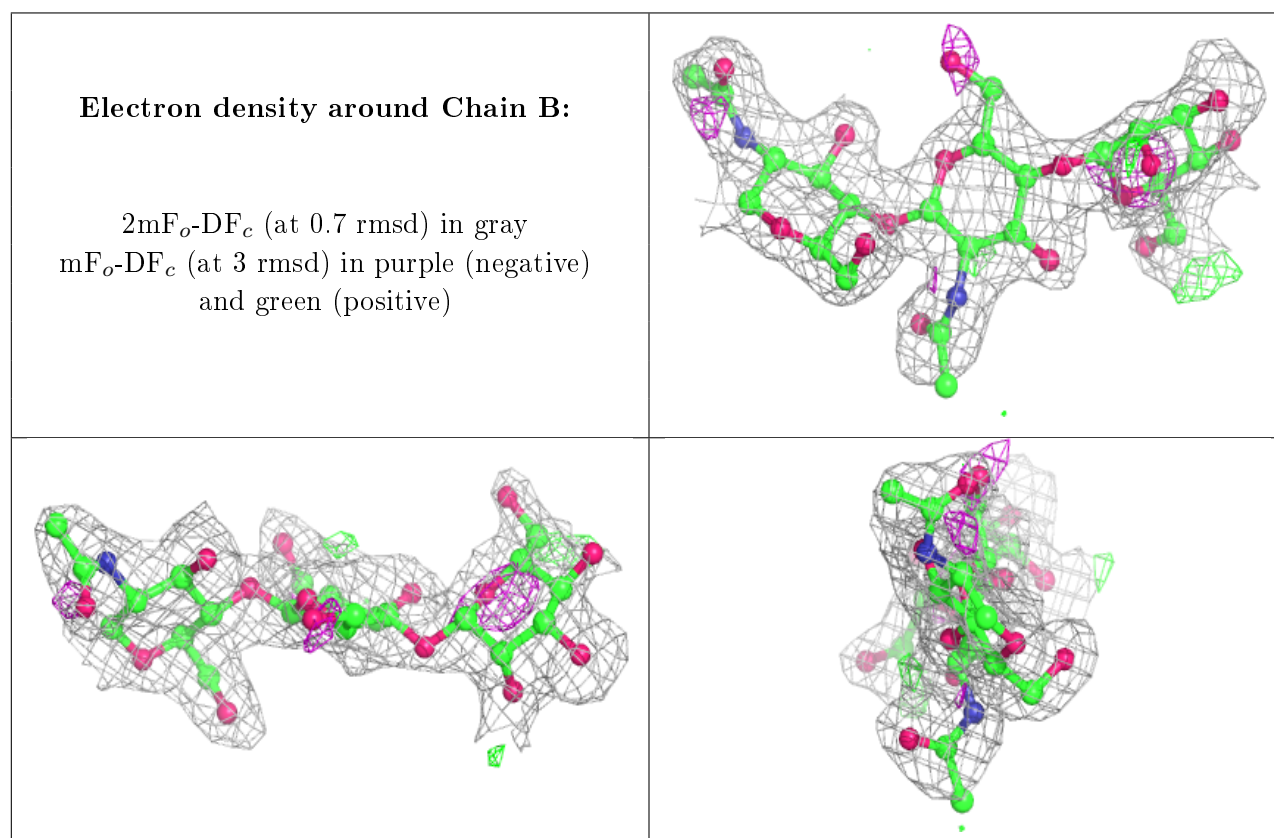
Mol	Type	Chain	Res	Atoms	RSCC	RSR	B-factors(Å ²)	Q<0.9
2	BMA	B	3	11/12	0.57	0.31	68,70,71,71	0
3	XYP	C	6	9/10	0.68	0.26	62,63,64,64	0
4	BMA	D	3	11/12	0.71	0.29	65,68,69,69	0
3	NAG	C	2	14/15	0.72	0.27	52,54,57,58	0
4	XYP	D	4	9/10	0.76	0.20	63,63,64,64	0

Continued on next page...

Continued from previous page...

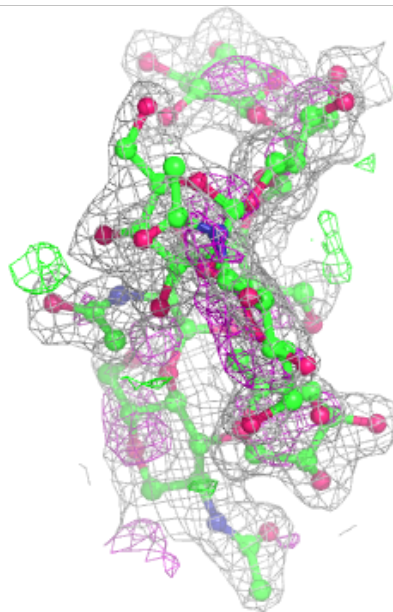
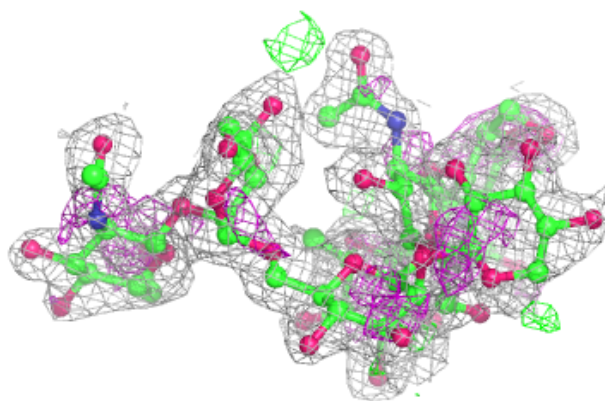
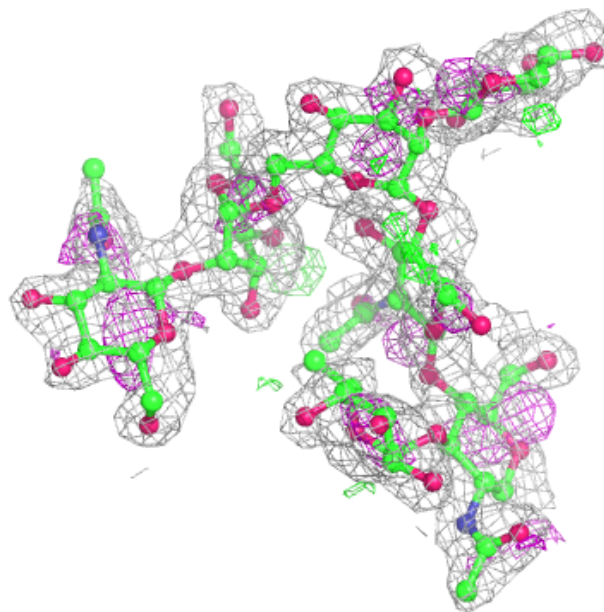
Mol	Type	Chain	Res	Atoms	RSCC	RSR	B-factors(\AA^2)	Q<0.9
3	MAN	C	4	11/12	0.80	0.17	50,51,53,53	0
3	BMA	C	3	11/12	0.83	0.28	55,58,60,61	0
3	NAG	C	5	14/15	0.84	0.34	47,52,53,54	0
4	FUC	D	5	10/11	0.84	0.16	64,65,67,67	0
4	NAG	D	1	14/15	0.89	0.15	52,58,60,61	0
2	NAG	B	2	14/15	0.89	0.25	56,60,63,65	0
3	FUC	C	7	10/11	0.89	0.33	52,53,53,53	0
4	NAG	D	2	14/15	0.90	0.21	62,64,65,66	0
3	NAG	C	1	14/15	0.90	0.21	43,47,49,51	0
2	NAG	B	1	14/15	0.92	0.12	39,41,45,51	0

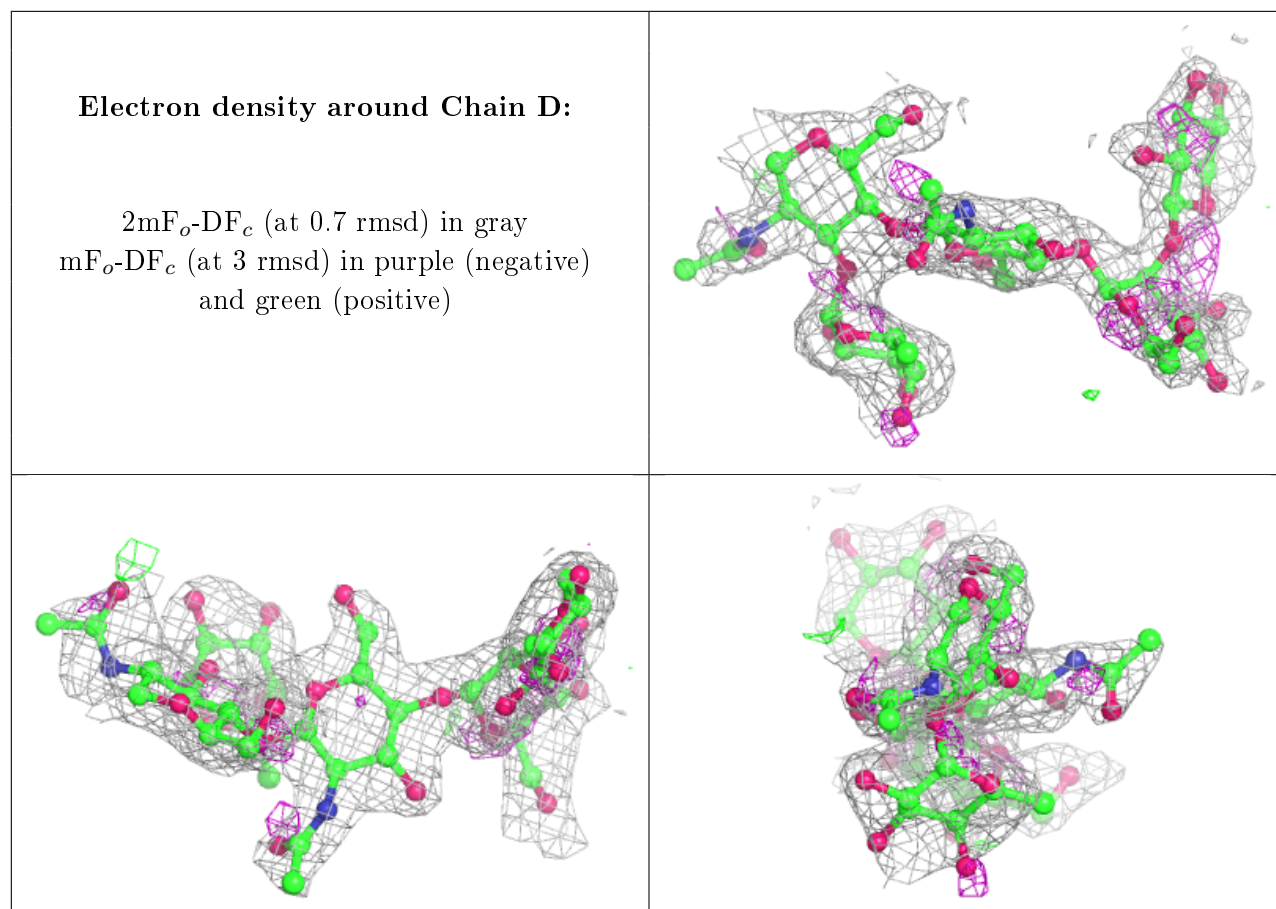
The following is a graphical depiction of the model fit to experimental electron density for oligosaccharide. Each fit is shown from different orientation to approximate a three-dimensional view.



Electron density around Chain C:

$2mF_o-DF_c$ (at 0.7 rmsd) in gray
 mF_o-DF_c (at 3 rmsd) in purple (negative)
and green (positive)





6.4 Ligands [i](#)

In the following table, the Atoms column lists the number of modelled atoms in the group and the number defined in the chemical component dictionary. The B-factors column lists the minimum, median, 95th percentile and maximum values of B factors of atoms in the group. The column labelled 'Q< 0.9' lists the number of atoms with occupancy less than 0.9.

Mol	Type	Chain	Res	Atoms	RSCC	RSR	B-factors(Å ²)	Q<0.9
7	PEG	A	721	7/7	0.73	0.19	58,58,59,59	0
7	PEG	A	720	7/7	0.73	0.28	77,77,77,77	0
5	PGE	A	717	10/10	0.79	0.17	61,63,64,64	0
5	PGE	A	716[A]	10/10	0.81	0.24	43,46,50,52	4
5	PGE	A	716[B]	10/10	0.81	0.24	45,46,50,52	4
8	PG4	A	723[A]	13/13	0.83	0.18	45,46,51,52	6
8	PG4	A	722	13/13	0.83	0.26	72,72,73,73	0
8	PG4	A	723[B]	13/13	0.83	0.18	46,46,51,52	6
6	EDO	A	718	4/4	0.87	0.19	70,70,70,71	0
6	EDO	A	719	4/4	0.93	0.15	26,33,35,40	0

6.5 Other polymers [i](#)

There are no such residues in this entry.