



wwPDB X-ray Structure Validation Summary Report ⓘ

Jan 3, 2024 – 06:28 am GMT

PDB ID : 4WJT
Title : Stationary Phase Survival Protein YuiC from B.subtilis complexed with NAG
Authors : Quay, D.H.X.; Cole, A.R.; Cryar, A.; Thalassinos, K.; Williams, M.A.; Bhakta, S.; Keep, N.H.
Deposited on : 2014-10-01
Resolution : 1.21 Å(reported)

This is a wwPDB X-ray Structure Validation Summary Report for a publicly released PDB entry.

We welcome your comments at validation@mail.wwpdb.org

A user guide is available at

<https://www.wwpdb.org/validation/2017/XrayValidationReportHelp>

with specific help available everywhere you see the ⓘ symbol.

The types of validation reports are described at

<http://www.wwpdb.org/validation/2017/FAQs#types>.

The following versions of software and data (see [references ⓘ](#)) were used in the production of this report:

MolProbity : 4.02b-467
Mogul : 1.8.4, CSD as541be (2020)
Xtriage (Phenix) : 1.13
EDS : 2.36
Percentile statistics : 20191225.v01 (using entries in the PDB archive December 25th 2019)
Refmac : 5.8.0158
CCP4 : 7.0.044 (Gargrove)
Ideal geometry (proteins) : Engh & Huber (2001)
Ideal geometry (DNA, RNA) : Parkinson et al. (1996)
Validation Pipeline (wwPDB-VP) : 2.36

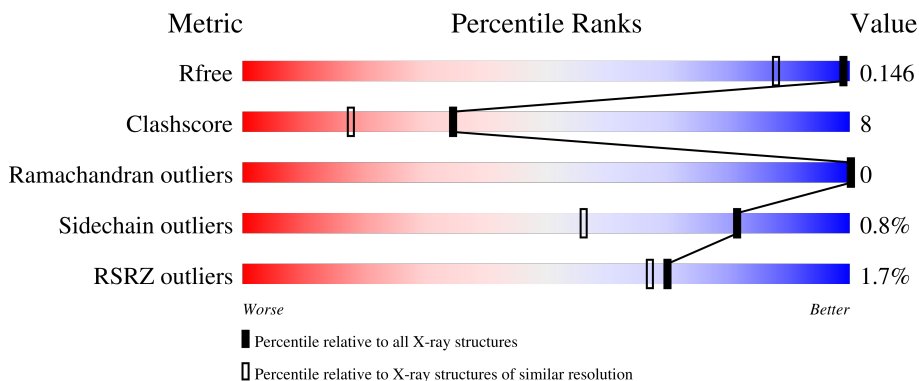
1 Overall quality at a glance

The following experimental techniques were used to determine the structure:

X-RAY DIFFRACTION

The reported resolution of this entry is 1.21 Å.

Percentile scores (ranging between 0-100) for global validation metrics of the entry are shown in the following graphic. The table shows the number of entries on which the scores are based.



Metric	Whole archive (#Entries)	Similar resolution (#Entries, resolution range(Å))
R_{free}	130704	1232 (1.24-1.20)
Clashscore	141614	1294 (1.24-1.20)
Ramachandran outliers	138981	1251 (1.24-1.20)
Sidechain outliers	138945	1250 (1.24-1.20)
RSRZ outliers	127900	1209 (1.24-1.20)

The table below summarises the geometric issues observed across the polymeric chains and their fit to the electron density. The red, orange, yellow and green segments of the lower bar indicate the fraction of residues that contain outliers for ≥ 3 , 2, 1 and 0 types of geometric quality criteria respectively. A grey segment represents the fraction of residues that are not modelled. The numeric value for each fraction is indicated below the corresponding segment, with a dot representing fractions $\leq 5\%$. The upper red bar (where present) indicates the fraction of residues that have poor fit to the electron density. The numeric value is given above the bar.

Mol	Chain	Length	Quality of chain
1	A	167	 2% 75% 11% 13%
1	B	167	 2% 74% 11% 13%

The following table lists non-polymeric compounds, carbohydrate monomers and non-standard residues in protein, DNA, RNA chains that are outliers for geometric or electron-density-fit criteria:

Mol	Type	Chain	Res	Chirality	Geometry	Clashes	Electron density
3	DMS	B	303	-	-	X	-

2 Entry composition [i](#)

There are 5 unique types of molecules in this entry. The entry contains 2815 atoms, of which 0 are hydrogens and 0 are deuteriums.

In the tables below, the ZeroOcc column contains the number of atoms modelled with zero occupancy, the AltConf column contains the number of residues with at least one atom in alternate conformation and the Trace column contains the number of residues modelled with at most 2 atoms.

- Molecule 1 is a protein called Uncharacterized protein YuiC.

Mol	Chain	Residues	Atoms				ZeroOcc	AltConf	Trace
			Total	C	N	O			
1	A	146	Total	C	N	O	0	7	0
			1185	769	186	230			
1	B	146	Total	C	N	O	0	7	0
			1185	767	186	232			

- Molecule 2 is 2-acetamido-2-deoxy-beta-D-glucopyranose (three-letter code: NAG) (formula: $C_8H_{15}NO_6$).



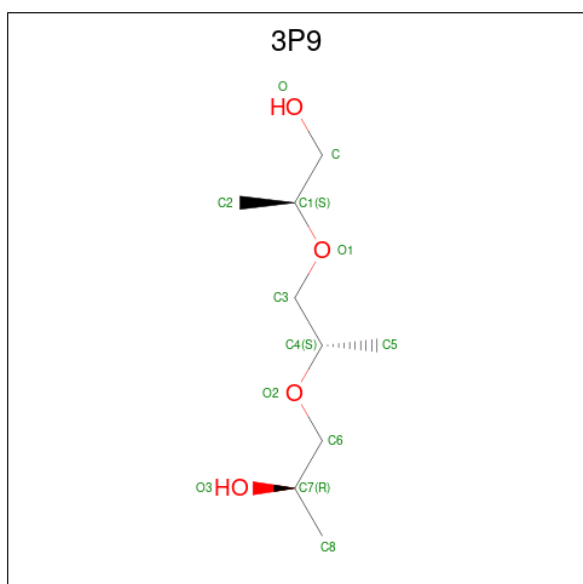
Mol	Chain	Residues	Atoms				ZeroOcc	AltConf
			Total	C	N	O		
2	A	1	Total	C	N	O	0	0
			15	8	1	6		
2	B	1	Total	C	N	O	0	1
			30	16	2	12		

- Molecule 3 is DIMETHYL SULFOXIDE (three-letter code: DMS) (formula: C_2H_6OS).



Mol	Chain	Residues	Atoms				ZeroOcc	AltConf
			Total	C	O	S		
3	A	1	4	2	1	1	0	0
3	B	1	4	2	1	1	0	0
3	B	1	4	2	1	1	0	0
3	B	1	4	2	1	1	0	0

- Molecule 4 is (2S)-2-[[[(2S)-2-[[[(2R)-2-hydroxypropyl]oxy}propyl]oxy}propan-1-ol (three-letter code: 3P9) (formula: C₉H₂₀O₄).



Mol	Chain	Residues	Atoms			ZeroOcc	AltConf
4	B	1	Total	C	O	0	0
			13	9	4		

- Molecule 5 is water.

Mol	Chain	Residues	Atoms		ZeroOcc	AltConf
5	A	189	Total	O	0	0
			189	189		
5	B	182	Total	O	0	0
			182	182		

4 Data and refinement statistics i

Property	Value	Source
Space group	H 3	Depositor
Cell constants a, b, c, α , β , γ	145.48Å 145.48Å 37.82Å 90.00° 90.00° 120.00°	Depositor
Resolution (Å)	72.74 – 1.21 36.37 – 1.21	Depositor EDS
% Data completeness (in resolution range)	98.5 (72.74-1.21) 98.5 (36.37-1.21)	Depositor EDS
R_{merge}	0.04	Depositor
R_{sym}	(Not available)	Depositor
$\langle I/\sigma(I) \rangle$ ¹	2.45 (at 1.21Å)	Xtrriage
Refinement program	REFMAC 5.8.0073	Depositor
R, R_{free}	0.111 , 0.144 0.115 , 0.146	Depositor DCC
R_{free} test set	4468 reflections (4.98%)	wwPDB-VP
Wilson B-factor (Å ²)	15.1	Xtrriage
Anisotropy	0.047	Xtrriage
Bulk solvent k_{sol} (e/Å ³), B_{sol} (Å ²)	0.34 , 46.1	EDS
L-test for twinning ²	$\langle L \rangle = 0.48$, $\langle L^2 \rangle = 0.31$	Xtrriage
Estimated twinning fraction	0.018 for h,-h-k,-l	Xtrriage
F_o, F_c correlation	0.98	EDS
Total number of atoms	2815	wwPDB-VP
Average B, all atoms (Å ²)	24.0	wwPDB-VP

Xtrriage's analysis on translational NCS is as follows: *The largest off-origin peak in the Patterson function is 4.40% of the height of the origin peak. No significant pseudotranslation is detected.*

¹Intensities estimated from amplitudes.

²Theoretical values of $\langle |L| \rangle$, $\langle L^2 \rangle$ for acentric reflections are 0.5, 0.333 respectively for untwinned datasets, and 0.375, 0.2 for perfectly twinned datasets.

5 Model quality [i](#)

5.1 Standard geometry [i](#)

Bond lengths and bond angles in the following residue types are not validated in this section: DMS, 3P9, NAG

The Z score for a bond length (or angle) is the number of standard deviations the observed value is removed from the expected value. A bond length (or angle) with $|Z| > 5$ is considered an outlier worth inspection. RMSZ is the root-mean-square of all Z scores of the bond lengths (or angles).

Mol	Chain	Bond lengths		Bond angles	
		RMSZ	# Z >5	RMSZ	# Z >5
1	A	1.14	3/1228 (0.2%)	1.07	5/1668 (0.3%)
1	B	1.20	6/1231 (0.5%)	1.11	5/1670 (0.3%)
All	All	1.17	9/2459 (0.4%)	1.09	10/3338 (0.3%)

The worst 5 of 9 bond length outliers are listed below:

Mol	Chain	Res	Type	Atoms	Z	Observed(Å)	Ideal(Å)
1	B	75	GLU	CD-OE1	11.44	1.38	1.25
1	A	98	GLU	CD-OE1	9.80	1.36	1.25
1	A	75	GLU	CD-OE1	8.54	1.35	1.25
1	B	98	GLU	CD-OE1	7.62	1.34	1.25
1	B	91	THR	CA-CB	6.44	1.70	1.53

The worst 5 of 10 bond angle outliers are listed below:

Mol	Chain	Res	Type	Atoms	Z	Observed(°)	Ideal(°)
1	B	98	GLU	OE1-CD-OE2	8.13	133.06	123.30
1	A	98	GLU	OE1-CD-OE2	7.78	132.64	123.30
1	A	160	ARG	NE-CZ-NH1	6.58	123.59	120.30
1	B	106[A]	ASP	CB-CG-OD2	6.10	123.79	118.30
1	B	106[B]	ASP	CB-CG-OD2	6.10	123.79	118.30

There are no chirality outliers.

There are no planarity outliers.

5.2 Too-close contacts [i](#)

In the following table, the Non-H and H(model) columns list the number of non-hydrogen atoms and hydrogen atoms in the chain respectively. The H(added) column lists the number of hydrogen

atoms added and optimized by MolProbity. The Clashes column lists the number of clashes within the asymmetric unit, whereas Symm-Clashes lists symmetry-related clashes.

Mol	Chain	Non-H	H(model)	H(added)	Clashes	Symm-Clashes
1	A	1185	0	1204	23	0
1	B	1185	0	1202	27	0
2	A	15	0	15	0	0
2	B	30	0	30	0	0
3	A	4	0	6	1	0
3	B	12	0	18	5	0
4	B	13	0	20	1	0
5	A	189	0	0	5	2
5	B	182	0	0	8	2
All	All	2815	0	2495	41	2

The all-atom clashscore is defined as the number of clashes found per 1000 atoms (including hydrogen atoms). The all-atom clashscore for this structure is 8.

The worst 5 of 41 close contacts within the same asymmetric unit are listed below, sorted by their clash magnitude.

Atom-1	Atom-2	Interatomic distance (Å)	Clash overlap (Å)
1:B:106[B]:ASP:OD1	5:B:561:HOH:O	1.78	0.99
1:A:186:LYS:HE3	5:A:588:HOH:O	1.67	0.93
1:A:119:LYS:HE3	5:B:564:HOH:O	1.75	0.87
3:B:303:DMS:H23	5:B:429:HOH:O	1.77	0.85
1:A:216:VAL:HG12	5:A:442:HOH:O	1.83	0.79

All (2) symmetry-related close contacts are listed below. The label for Atom-2 includes the symmetry operator and encoded unit-cell translations to be applied.

Atom-1	Atom-2	Interatomic distance (Å)	Clash overlap (Å)
5:A:460:HOH:O	5:B:472:HOH:O[1_554]	1.96	0.24
5:A:476:HOH:O	5:B:484:HOH:O[8_554]	2.03	0.17

5.3 Torsion angles [i](#)

5.3.1 Protein backbone [i](#)

In the following table, the Percentiles column shows the percent Ramachandran outliers of the chain as a percentile score with respect to all X-ray entries followed by that with respect to entries of similar resolution.

The Analysed column shows the number of residues for which the backbone conformation was analysed, and the total number of residues.

Mol	Chain	Analysed	Favoured	Allowed	Outliers	Percentiles	
1	A	151/167 (90%)	148 (98%)	3 (2%)	0	100	100
1	B	151/167 (90%)	146 (97%)	5 (3%)	0	100	100
All	All	302/334 (90%)	294 (97%)	8 (3%)	0	100	100

There are no Ramachandran outliers to report.

5.3.2 Protein sidechains [i](#)

In the following table, the Percentiles column shows the percent sidechain outliers of the chain as a percentile score with respect to all X-ray entries followed by that with respect to entries of similar resolution.

The Analysed column shows the number of residues for which the sidechain conformation was analysed, and the total number of residues.

Mol	Chain	Analysed	Rotameric	Outliers	Percentiles	
1	A	131/142 (92%)	129 (98%)	2 (2%)	65	30
1	B	131/142 (92%)	129 (98%)	2 (2%)	65	30
All	All	262/284 (92%)	258 (98%)	4 (2%)	81	30

All (4) residues with a non-rotameric sidechain are listed below:

Mol	Chain	Res	Type
1	A	162[A]	ASP
1	A	162[B]	ASP
1	B	162[A]	ASP
1	B	162[B]	ASP

Sometimes sidechains can be flipped to improve hydrogen bonding and reduce clashes. All (1) such sidechains are listed below:

Mol	Chain	Res	Type
1	B	212	GLN

5.3.3 RNA [i](#)

There are no RNA molecules in this entry.

5.4 Non-standard residues in protein, DNA, RNA chains [i](#)

There are no non-standard protein/DNA/RNA residues in this entry.

5.5 Carbohydrates [i](#)

There are no monosaccharides in this entry.

5.6 Ligand geometry [i](#)

8 ligands are modelled in this entry.

In the following table, the Counts columns list the number of bonds (or angles) for which Mogul statistics could be retrieved, the number of bonds (or angles) that are observed in the model and the number of bonds (or angles) that are defined in the Chemical Component Dictionary. The Link column lists molecule types, if any, to which the group is linked. The Z score for a bond length (or angle) is the number of standard deviations the observed value is removed from the expected value. A bond length (or angle) with $|Z| > 2$ is considered an outlier worth inspection. RMSZ is the root-mean-square of all Z scores of the bond lengths (or angles).

Mol	Type	Chain	Res	Link	Bond lengths			Bond angles		
					Counts	RMSZ	# Z > 2	Counts	RMSZ	# Z > 2
3	DMS	A	302	-	3,3,3	0.64	0	3,3,3	0.79	0
3	DMS	B	305	-	3,3,3	0.56	0	3,3,3	0.65	0
2	NAG	A	301	-	15,15,15	0.71	0	21,21,21	1.00	1 (4%)
3	DMS	B	303	-	3,3,3	0.43	0	3,3,3	0.75	0
2	NAG	B	301[B]	-	15,15,15	0.82	1 (6%)	21,21,21	0.94	1 (4%)
4	3P9	B	302	-	9,12,12	1.16	0	10,14,14	3.33	6 (60%)
2	NAG	B	301[A]	-	15,15,15	0.99	1 (6%)	21,21,21	1.02	2 (9%)
3	DMS	B	304	-	3,3,3	1.11	0	3,3,3	2.41	2 (66%)

In the following table, the Chirals column lists the number of chiral outliers, the number of chiral centers analysed, the number of these observed in the model and the number defined in the Chemical Component Dictionary. Similar counts are reported in the Torsion and Rings columns. '-' means no outliers of that kind were identified.

Mol	Type	Chain	Res	Link	Chirals	Torsions	Rings
4	3P9	B	302	-	-	2/12/12/12	-
2	NAG	B	301[A]	-	-	0/6/26/26	0/1/1/1
2	NAG	B	301[B]	-	-	0/6/26/26	0/1/1/1
2	NAG	A	301	-	-	0/6/26/26	0/1/1/1

All (2) bond length outliers are listed below:

Mol	Chain	Res	Type	Atoms	Z	Observed(Å)	Ideal(Å)
2	B	301[A]	NAG	C3-C2	-2.85	1.47	1.53
2	B	301[B]	NAG	C3-C2	-2.19	1.49	1.53

The worst 5 of 12 bond angle outliers are listed below:

Mol	Chain	Res	Type	Atoms	Z	Observed(°)	Ideal(°)
4	B	302	3P9	C6-O2-C4	6.35	124.49	115.02
4	B	302	3P9	O2-C6-C7	4.94	118.42	108.86
4	B	302	3P9	O1-C1-C	3.91	119.05	108.64
3	B	304	DMS	O-S-C2	3.52	124.51	106.54
4	B	302	3P9	C5-C4-C3	-3.52	102.51	112.63

There are no chirality outliers.

All (2) torsion outliers are listed below:

Mol	Chain	Res	Type	Atoms
4	B	302	3P9	C4-C3-O1-C1
4	B	302	3P9	C2-C1-O1-C3

There are no ring outliers.

3 monomers are involved in 7 short contacts:

Mol	Chain	Res	Type	Clashes	Symm-Clashes
3	A	302	DMS	1	0
3	B	303	DMS	5	0
4	B	302	3P9	1	0

5.7 Other polymers [i](#)

There are no such residues in this entry.

5.8 Polymer linkage issues [i](#)

There are no chain breaks in this entry.

6 Fit of model and data [i](#)

6.1 Protein, DNA and RNA chains [i](#)

In the following table, the column labelled ‘#RSRZ > 2’ contains the number (and percentage) of RSRZ outliers, followed by percent RSRZ outliers for the chain as percentile scores relative to all X-ray entries and entries of similar resolution. The OWAB column contains the minimum, median, 95th percentile and maximum values of the occupancy-weighted average B-factor per residue. The column labelled ‘Q < 0.9’ lists the number of (and percentage) of residues with an average occupancy less than 0.9.

Mol	Chain	Analysed	<RSRZ>	#RSRZ>2	OWAB(Å ²)	Q<0.9
1	A	146/167 (87%)	-0.31	2 (1%) 75 73	11, 18, 39, 65	0
1	B	146/167 (87%)	-0.32	3 (2%) 63 60	12, 18, 41, 90	0
All	All	292/334 (87%)	-0.31	5 (1%) 70 67	11, 18, 41, 90	0

All (5) RSRZ outliers are listed below:

Mol	Chain	Res	Type	RSRZ
1	A	72	LYS	4.4
1	B	72	LYS	3.7
1	A	91	THR	3.6
1	B	216	VAL	2.3
1	B	217	LYS	2.1

6.2 Non-standard residues in protein, DNA, RNA chains [i](#)

There are no non-standard protein/DNA/RNA residues in this entry.

6.3 Carbohydrates [i](#)

There are no monosaccharides in this entry.

6.4 Ligands [i](#)

In the following table, the Atoms column lists the number of modelled atoms in the group and the number defined in the chemical component dictionary. The B-factors column lists the minimum, median, 95th percentile and maximum values of B factors of atoms in the group. The column labelled ‘Q < 0.9’ lists the number of atoms with occupancy less than 0.9.

Mol	Type	Chain	Res	Atoms	RSCC	RSR	B-factors(\AA^2)	Q<0.9
4	3P9	B	302	13/13	0.84	0.21	33,41,56,66	0
3	DMS	B	303	4/4	0.85	0.24	46,69,75,135	0
3	DMS	B	304	4/4	0.88	0.20	31,34,58,77	0
3	DMS	A	302	4/4	0.90	0.21	38,60,64,65	0
2	NAG	B	301[A]	15/15	0.95	0.10	17,19,27,32	15
2	NAG	B	301[B]	15/15	0.95	0.10	17,19,26,38	15
3	DMS	B	305	4/4	0.96	0.10	52,61,69,92	0
2	NAG	A	301	15/15	0.98	0.06	13,16,28,43	0

6.5 Other polymers [\(i\)](#)

There are no such residues in this entry.