



wwPDB X-ray Structure Validation Summary Report ⓘ

Nov 21, 2023 – 10:05 AM EST

PDB ID : 3WJL
Title : Crystal structure of IIB selective Fc variant, Fc(V12), in complex with FcγRIIb
Authors : Kadono, S.; Mimoto, F.; Katada, H.; Igawa, T.; Kuramochi, T.; Muraoka, M.;
Wada, Y.; Haraya, K.; Miyazaki, T.; Hattori, K.
Deposited on : 2013-10-11
Resolution : 2.86 Å(reported)

This is a wwPDB X-ray Structure Validation Summary Report for a publicly released PDB entry.

We welcome your comments at validation@mail.wwpdb.org

A user guide is available at

<https://www.wwpdb.org/validation/2017/XrayValidationReportHelp>

with specific help available everywhere you see the ⓘ symbol.

The types of validation reports are described at

<http://www.wwpdb.org/validation/2017/FAQs#types>.

The following versions of software and data (see [references ⓘ](#)) were used in the production of this report:

MolProbity : 4.02b-467
Mogul : 1.8.5 (274361), CSD as541be (2020)
Xtriage (Phenix) : 1.13
EDS : 2.36
Percentile statistics : 20191225.v01 (using entries in the PDB archive December 25th 2019)
Refmac : 5.8.0158
CCP4 : 7.0.044 (Gargrove)
Ideal geometry (proteins) : Engh & Huber (2001)
Ideal geometry (DNA, RNA) : Parkinson et al. (1996)
Validation Pipeline (wwPDB-VP) : 2.36

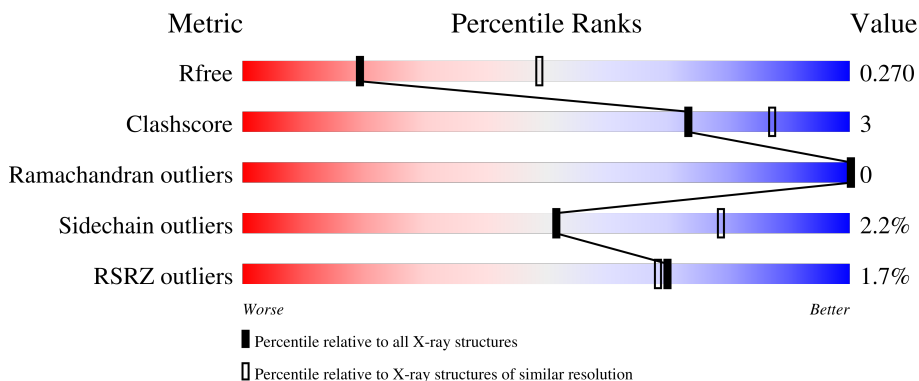
1 Overall quality at a glance

The following experimental techniques were used to determine the structure:

X-RAY DIFFRACTION

The reported resolution of this entry is 2.86 Å.

Percentile scores (ranging between 0-100) for global validation metrics of the entry are shown in the following graphic. The table shows the number of entries on which the scores are based.



Metric	Whole archive (#Entries)	Similar resolution (#Entries, resolution range(Å))
R_{free}	130704	3168 (2.90-2.82)
Clashscore	141614	3438 (2.90-2.82)
Ramachandran outliers	138981	3348 (2.90-2.82)
Sidechain outliers	138945	3351 (2.90-2.82)
RSRZ outliers	127900	3103 (2.90-2.82)

The table below summarises the geometric issues observed across the polymeric chains and their fit to the electron density. The red, orange, yellow and green segments of the lower bar indicate the fraction of residues that contain outliers for ≥ 3 , 2, 1 and 0 types of geometric quality criteria respectively. A grey segment represents the fraction of residues that are not modelled. The numeric value for each fraction is indicated below the corresponding segment, with a dot representing fractions $\leq 5\%$. The upper red bar (where present) indicates the fraction of residues that have poor fit to the electron density. The numeric value is given above the bar.

Mol	Chain	Length	Quality of chain
1	A	230	
1	B	230	
2	C	179	
3	D	8	
4	E	9	

2 Entry composition

There are 6 unique types of molecules in this entry. The entry contains 4768 atoms, of which 0 are hydrogens and 0 are deuteriums.

In the tables below, the ZeroOcc column contains the number of atoms modelled with zero occupancy, the AltConf column contains the number of residues with at least one atom in alternate conformation and the Trace column contains the number of residues modelled with at most 2 atoms.

- Molecule 1 is a protein called Ig gamma-1 chain C region.

Mol	Chain	Residues	Atoms					ZeroOcc	AltConf	Trace
			Total	C	N	O	S			
1	A	212	1626	1039	265	316	6	0	0	0
1	B	208	1643	1041	272	324	6	0	0	0

There are 14 discrepancies between the modelled and reference sequences:

Chain	Residue	Modelled	Actual	Comment	Reference
A	220	SER	CYS	engineered mutation	UNP P01857
A	233	ASP	GLU	engineered mutation	UNP P01857
A	237	ASP	GLY	engineered mutation	UNP P01857
A	238	ASP	PRO	engineered mutation	UNP P01857
A	268	ASP	HIS	engineered mutation	UNP P01857
A	271	GLY	PRO	engineered mutation	UNP P01857
A	330	ARG	ALA	engineered mutation	UNP P01857
B	220	SER	CYS	engineered mutation	UNP P01857
B	233	ASP	GLU	engineered mutation	UNP P01857
B	237	ASP	GLY	engineered mutation	UNP P01857
B	238	ASP	PRO	engineered mutation	UNP P01857
B	268	ASP	HIS	engineered mutation	UNP P01857
B	271	GLY	PRO	engineered mutation	UNP P01857
B	330	ARG	ALA	engineered mutation	UNP P01857

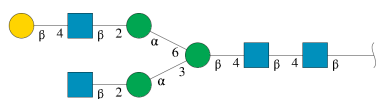
- Molecule 2 is a protein called Low affinity immunoglobulin gamma Fc region receptor II-c.

Mol	Chain	Residues	Atoms					ZeroOcc	AltConf	Trace
			Total	C	N	O	S			
2	C	160	1233	785	210	234	4	0	0	0

There are 6 discrepancies between the modelled and reference sequences:

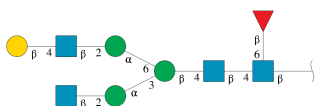
Chain	Residue	Modelled	Actual	Comment	Reference
C	173	HIS	-	expression tag	UNP P31995
C	174	HIS	-	expression tag	UNP P31995
C	175	HIS	-	expression tag	UNP P31995
C	176	HIS	-	expression tag	UNP P31995
C	177	HIS	-	expression tag	UNP P31995
C	178	HIS	-	expression tag	UNP P31995

- Molecule 3 is an oligosaccharide called beta-D-galactopyranose-(1-4)-2-acetamido-2-deoxy-beta-D-glucopyranose-(1-2)-alpha-D-mannopyranose-(1-6)-[2-acetamido-2-deoxy-beta-D-glucopyranose-(1-2)-alpha-D-mannopyranose-(1-3)]beta-D-mannopyranose-(1-4)-2-acetamido-2-deoxy-beta-D-glucopyranose-(1-4)-2-acetamido-2-deoxy-beta-D-glucopyranose.



Mol	Chain	Residues	Atoms				ZeroOcc	AltConf	Trace
			Total	C	N	O			
3	D	8	100	56	4	40	0	0	0

- Molecule 4 is an oligosaccharide called beta-D-galactopyranose-(1-4)-2-acetamido-2-deoxy-beta-D-glucopyranose-(1-2)-alpha-D-mannopyranose-(1-6)-[2-acetamido-2-deoxy-beta-D-glucopyranose-(1-2)-alpha-D-mannopyranose-(1-3)]beta-D-mannopyranose-(1-4)-2-acetamido-2-deoxy-beta-D-glucopyranose-(1-4)-[beta-L-fucopyranose-(1-6)]2-acetamido-2-deoxy-beta-D-glucopyranose.



Mol	Chain	Residues	Atoms				ZeroOcc	AltConf	Trace
			Total	C	N	O			
4	E	9	110	62	4	44	0	0	0

- Molecule 5 is 2-acetamido-2-deoxy-beta-D-glucopyranose (three-letter code: NAG) (formula: C₈H₁₅NO₆).



Mol	Chain	Residues	Atoms				ZeroOcc	AltConf
			Total	C	N	O		
5	C	1	14	8	1	5	0	0

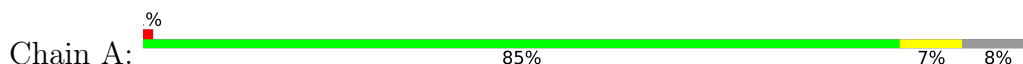
- Molecule 6 is water.

Mol	Chain	Residues	Atoms		ZeroOcc	AltConf
6	A	17	Total	O	0	0
			17	17		
6	B	21	Total	O	0	0
			21	21		
6	C	4	Total	O	0	0
			4	4		

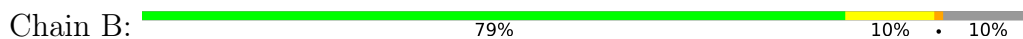
3 Residue-property plots [i](#)

These plots are drawn for all protein, RNA, DNA and oligosaccharide chains in the entry. The first graphic for a chain summarises the proportions of the various outlier classes displayed in the second graphic. The second graphic shows the sequence view annotated by issues in geometry and electron density. Residues are color-coded according to the number of geometric quality criteria for which they contain at least one outlier: green = 0, yellow = 1, orange = 2 and red = 3 or more. A red dot above a residue indicates a poor fit to the electron density ($RSRZ > 2$). Stretches of 2 or more consecutive residues without any outlier are shown as a green connector. Residues present in the sample, but not in the model, are shown in grey.

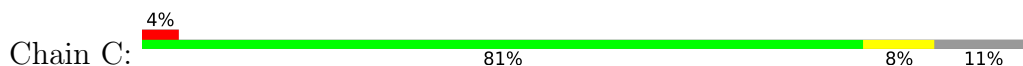
- Molecule 1: Ig gamma-1 chain C region



- Molecule 1: Ig gamma-1 chain C region



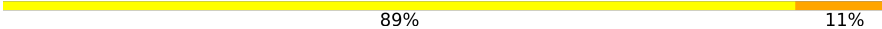
- Molecule 2: Low affinity immunoglobulin gamma Fc region receptor II-c



- Molecule 3: beta-D-galactopyranose-(1-4)-2-acetamido-2-deoxy-beta-D-glucopyranose-(1-2)-alpha-D-mannopyranose-(1-6)-[2-acetamido-2-deoxy-beta-D-glucopyranose-(1-2)-alpha-D-mannopyranose-(1-3)]beta-D-mannopyranose-(1-4)-2-acetamido-2-deoxy-beta-D-glucopyranose



- Molecule 4: beta-D-galactopyranose-(1-4)-2-acetamido-2-deoxy-beta-D-glucopyranose-(1-2)-alpha-D-mannopyranose-(1-6)-[2-acetamido-2-deoxy-beta-D-glucopyranose-(1-2)-alpha-D-mannopyranose-(1-3)]beta-D-mannopyranose-(1-4)-2-acetamido-2-deoxy-beta-D-glucopyranose-(1-4)-[beta-L-fucopyranose-(1-6)]2-acetamido-2-deoxy-beta-D-glucopyranose

Chain E:  89% 11%

NAG1
NAG2
BMA3
MAN4
NAG5
GAL6
MAN7
NAG8
FUL9

4 Data and refinement statistics i

Property	Value	Source
Space group	C 2 2 21	Depositor
Cell constants a, b, c, α , β , γ	156.71Å 260.20Å 56.86Å 90.00° 90.00° 90.00°	Depositor
Resolution (Å)	25.00 – 2.86 78.35 – 2.86	Depositor EDS
% Data completeness (in resolution range)	99.4 (25.00-2.86) 99.4 (78.35-2.86)	Depositor EDS
R_{merge}	(Not available)	Depositor
R_{sym}	0.09	Depositor
$\langle I/\sigma(I) \rangle$ ¹	2.43 (at 2.86Å)	Xtrriage
Refinement program	REFMAC	Depositor
R, R_{free}	0.230 , 0.270 0.231 , 0.270	Depositor DCC
R_{free} test set	1366 reflections (5.02%)	wwPDB-VP
Wilson B-factor (Å ²)	64.8	Xtrriage
Anisotropy	0.287	Xtrriage
Bulk solvent k_{sol} (e/Å ³), B_{sol} (Å ²)	0.31 , 37.7	EDS
L-test for twinning ²	$\langle L \rangle = 0.48$, $\langle L^2 \rangle = 0.31$	Xtrriage
Estimated twinning fraction	0.016 for 1/2*h-1/2*k,-3/2*h-1/2*k,-l 0.023 for 1/2*h+1/2*k,3/2*h-1/2*k,-l	Xtrriage
F_o, F_c correlation	0.91	EDS
Total number of atoms	4768	wwPDB-VP
Average B, all atoms (Å ²)	65.0	wwPDB-VP

Xtrriage's analysis on translational NCS is as follows: *The largest off-origin peak in the Patterson function is 3.80% of the height of the origin peak. No significant pseudotranslation is detected.*

¹Intensities estimated from amplitudes.

²Theoretical values of $\langle |L| \rangle$, $\langle L^2 \rangle$ for acentric reflections are 0.5, 0.333 respectively for untwinned datasets, and 0.375, 0.2 for perfectly twinned datasets.

5 Model quality

5.1 Standard geometry

Bond lengths and bond angles in the following residue types are not validated in this section: BMA, FUL, MAN, GAL, NAG

The Z score for a bond length (or angle) is the number of standard deviations the observed value is removed from the expected value. A bond length (or angle) with $|Z| > 5$ is considered an outlier worth inspection. RMSZ is the root-mean-square of all Z scores of the bond lengths (or angles).

Mol	Chain	Bond lengths		Bond angles	
		RMSZ	# Z >5	RMSZ	# Z >5
1	A	0.32	0/1669	0.52	0/2285
1	B	0.33	0/1686	0.51	0/2303
2	C	0.31	0/1267	0.50	0/1732
All	All	0.32	0/4622	0.51	0/6320

There are no bond length outliers.

There are no bond angle outliers.

There are no chirality outliers.

There are no planarity outliers.

5.2 Too-close contacts

In the following table, the Non-H and H(model) columns list the number of non-hydrogen atoms and hydrogen atoms in the chain respectively. The H(added) column lists the number of hydrogen atoms added and optimized by MolProbity. The Clashes column lists the number of clashes within the asymmetric unit, whereas Symm-Clashes lists symmetry-related clashes.

Mol	Chain	Non-H	H(model)	H(added)	Clashes	Symm-Clashes
1	A	1626	0	1517	10	0
1	B	1643	0	1553	14	0
2	C	1233	0	1153	6	0
3	D	100	0	85	0	0
4	E	110	0	94	1	0
5	C	14	0	13	0	0
6	A	17	0	0	0	0
6	B	21	0	0	0	0
6	C	4	0	0	0	0
All	All	4768	0	4415	30	0

The all-atom clashscore is defined as the number of clashes found per 1000 atoms (including hydrogen atoms). The all-atom clashscore for this structure is 3.

The worst 5 of 30 close contacts within the same asymmetric unit are listed below, sorted by their clash magnitude.

Atom-1	Atom-2	Interatomic distance (Å)	Clash overlap (Å)
1:B:346:PRO:HB3	1:B:372:PHE:HB3	1.68	0.76
2:C:110:TRP:O	2:C:113:LYS:HG3	1.92	0.70
1:A:294:GLU:HG3	1:A:295:GLN:H	1.59	0.67
1:A:429:HIS:CD2	1:A:431:ALA:H	2.17	0.61
1:B:292:ARG:HG3	1:B:300:TYR:CD1	2.40	0.57

There are no symmetry-related clashes.

5.3 Torsion angles [i](#)

5.3.1 Protein backbone [i](#)

In the following table, the Percentiles column shows the percent Ramachandran outliers of the chain as a percentile score with respect to all X-ray entries followed by that with respect to entries of similar resolution.

The Analysed column shows the number of residues for which the backbone conformation was analysed, and the total number of residues.

Mol	Chain	Analysed	Favoured	Allowed	Outliers	Percentiles	
1	A	210/230 (91%)	202 (96%)	8 (4%)	0	100	100
1	B	206/230 (90%)	198 (96%)	8 (4%)	0	100	100
2	C	156/179 (87%)	151 (97%)	5 (3%)	0	100	100
All	All	572/639 (90%)	551 (96%)	21 (4%)	0	100	100

There are no Ramachandran outliers to report.

5.3.2 Protein sidechains [i](#)

In the following table, the Percentiles column shows the percent sidechain outliers of the chain as a percentile score with respect to all X-ray entries followed by that with respect to entries of similar resolution.

The Analysed column shows the number of residues for which the sidechain conformation was analysed, and the total number of residues.

Mol	Chain	Analysed	Rotameric	Outliers	Percentiles	
1	A	176/215 (82%)	174 (99%)	2 (1%)	73	90
1	B	186/215 (86%)	181 (97%)	5 (3%)	44	74
2	C	136/164 (83%)	132 (97%)	4 (3%)	42	72
All	All	498/594 (84%)	487 (98%)	11 (2%)	52	79

5 of 11 residues with a non-rotameric sidechain are listed below:

Mol	Chain	Res	Type
2	C	67	THR
2	C	116	VAL
2	C	168	THR
2	C	167	ILE
1	B	328	LEU

Sometimes sidechains can be flipped to improve hydrogen bonding and reduce clashes. 5 of 10 such sidechains are listed below:

Mol	Chain	Res	Type
1	B	434	ASN
1	B	435	HIS
2	C	94	HIS
1	A	418	GLN
1	A	429	HIS

5.3.3 RNA [i](#)

There are no RNA molecules in this entry.

5.4 Non-standard residues in protein, DNA, RNA chains [i](#)

There are no non-standard protein/DNA/RNA residues in this entry.

5.5 Carbohydrates [i](#)

17 monosaccharides are modelled in this entry.

In the following table, the Counts columns list the number of bonds (or angles) for which Mogul statistics could be retrieved, the number of bonds (or angles) that are observed in the model and the number of bonds (or angles) that are defined in the Chemical Component Dictionary. The Link column lists molecule types, if any, to which the group is linked. The Z score for a bond length (or angle) is the number of standard deviations the observed value is removed from the

expected value. A bond length (or angle) with $|Z| > 2$ is considered an outlier worth inspection. RMSZ is the root-mean-square of all Z scores of the bond lengths (or angles).

Mol	Type	Chain	Res	Link	Bond lengths			Bond angles		
					Counts	RMSZ	# $ Z > 2$	Counts	RMSZ	# $ Z > 2$
3	NAG	D	1	3,1	14,14,15	0.50	0	17,19,21	1.10	1 (5%)
3	NAG	D	2	3	14,14,15	0.53	0	17,19,21	0.92	0
3	BMA	D	3	3	11,11,12	0.55	0	15,15,17	1.00	2 (13%)
3	MAN	D	4	3	11,11,12	0.60	0	15,15,17	0.82	1 (6%)
3	NAG	D	5	3	14,14,15	0.50	0	17,19,21	0.82	0
3	GAL	D	6	3	11,11,12	0.61	0	15,15,17	0.72	0
3	MAN	D	7	3	11,11,12	0.52	0	15,15,17	1.17	1 (6%)
3	NAG	D	8	3	14,14,15	0.57	0	17,19,21	0.79	0
4	NAG	E	1	1,4	14,14,15	0.42	0	17,19,21	1.26	1 (5%)
4	NAG	E	2	4	14,14,15	0.56	0	17,19,21	0.88	1 (5%)
4	BMA	E	3	4	11,11,12	0.35	0	15,15,17	1.13	2 (13%)
4	MAN	E	4	4	11,11,12	0.50	0	15,15,17	1.44	1 (6%)
4	NAG	E	5	4	14,14,15	0.66	0	17,19,21	1.05	1 (5%)
4	GAL	E	6	4	11,11,12	0.62	0	15,15,17	1.35	3 (20%)
4	MAN	E	7	4	11,11,12	0.52	0	15,15,17	1.61	2 (13%)
4	NAG	E	8	4	14,14,15	0.57	0	17,19,21	1.05	2 (11%)
4	FUL	E	9	4	10,10,11	0.57	0	14,14,16	0.66	0

In the following table, the Chirals column lists the number of chiral outliers, the number of chiral centers analysed, the number of these observed in the model and the number defined in the Chemical Component Dictionary. Similar counts are reported in the Torsion and Rings columns. '-' means no outliers of that kind were identified.

Mol	Type	Chain	Res	Link	Chirals	Torsions	Rings
3	NAG	D	1	3,1	-	0/6/23/26	0/1/1/1
3	NAG	D	2	3	-	1/6/23/26	0/1/1/1
3	BMA	D	3	3	-	0/2/19/22	0/1/1/1
3	MAN	D	4	3	-	0/2/19/22	0/1/1/1
3	NAG	D	5	3	-	2/6/23/26	0/1/1/1
3	GAL	D	6	3	-	1/2/19/22	0/1/1/1
3	MAN	D	7	3	-	2/2/19/22	0/1/1/1
3	NAG	D	8	3	-	2/6/23/26	0/1/1/1
4	NAG	E	1	1,4	-	2/6/23/26	0/1/1/1
4	NAG	E	2	4	-	0/6/23/26	0/1/1/1
4	BMA	E	3	4	-	0/2/19/22	0/1/1/1
4	MAN	E	4	4	-	0/2/19/22	0/1/1/1

Continued on next page...

Continued from previous page...

Mol	Type	Chain	Res	Link	Chirals	Torsions	Rings
4	NAG	E	5	4	-	0/6/23/26	0/1/1/1
4	GAL	E	6	4	-	2/2/19/22	0/1/1/1
4	MAN	E	7	4	-	0/2/19/22	0/1/1/1
4	NAG	E	8	4	-	2/6/23/26	0/1/1/1
4	FUL	E	9	4	-	-	0/1/1/1

There are no bond length outliers.

The worst 5 of 18 bond angle outliers are listed below:

Mol	Chain	Res	Type	Atoms	Z	Observed(°)	Ideal(°)
4	E	4	MAN	C1-O5-C5	4.88	118.81	112.19
4	E	1	NAG	O5-C5-C6	4.30	113.94	107.20
4	E	7	MAN	C1-O5-C5	3.83	117.39	112.19
4	E	7	MAN	C1-C2-C3	-3.49	105.37	109.67
4	E	5	NAG	C4-C3-C2	3.03	115.46	111.02

There are no chirality outliers.

5 of 14 torsion outliers are listed below:

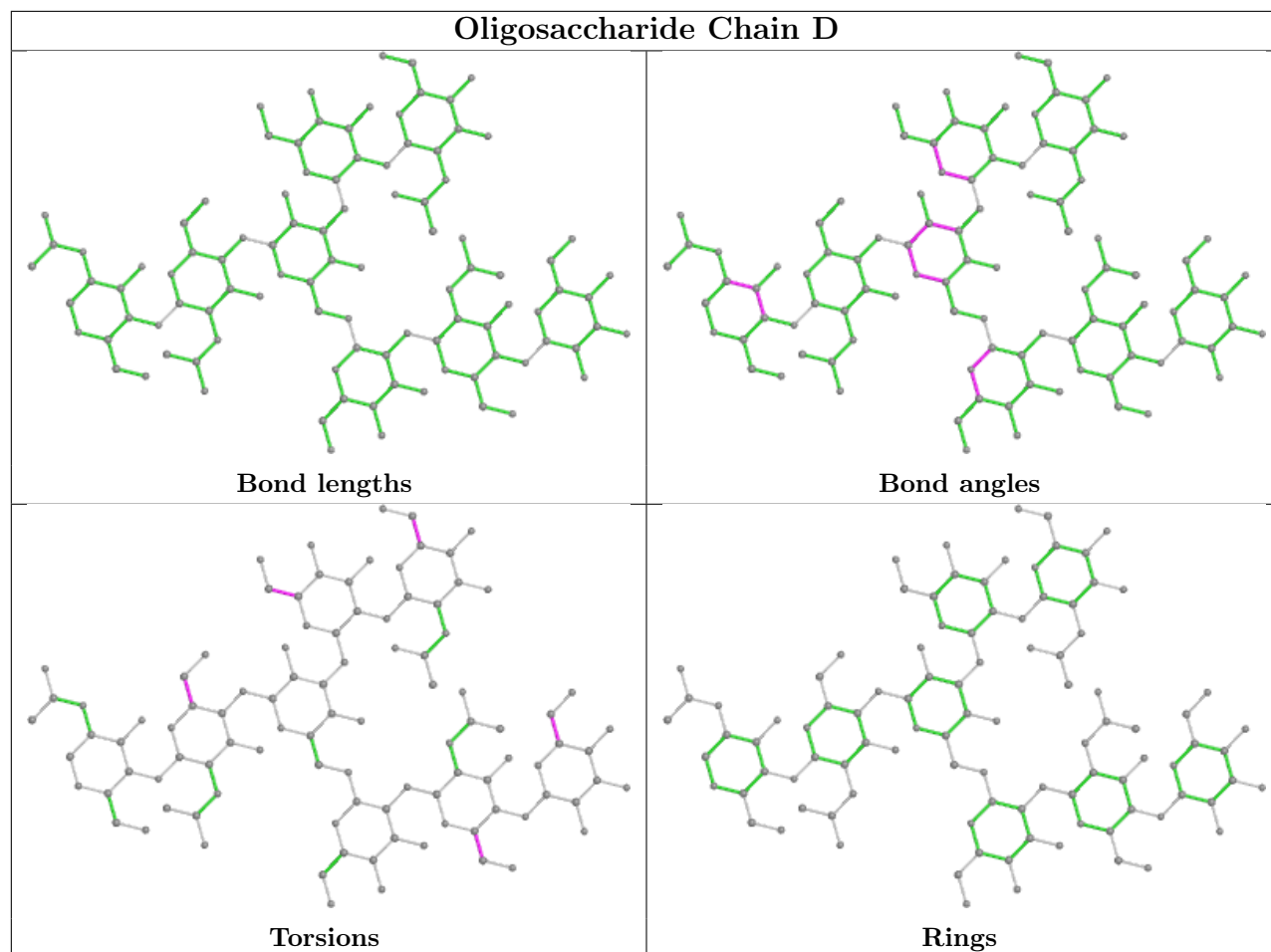
Mol	Chain	Res	Type	Atoms
4	E	1	NAG	O5-C5-C6-O6
3	D	5	NAG	O5-C5-C6-O6
4	E	6	GAL	O5-C5-C6-O6
3	D	5	NAG	C4-C5-C6-O6
3	D	8	NAG	O5-C5-C6-O6

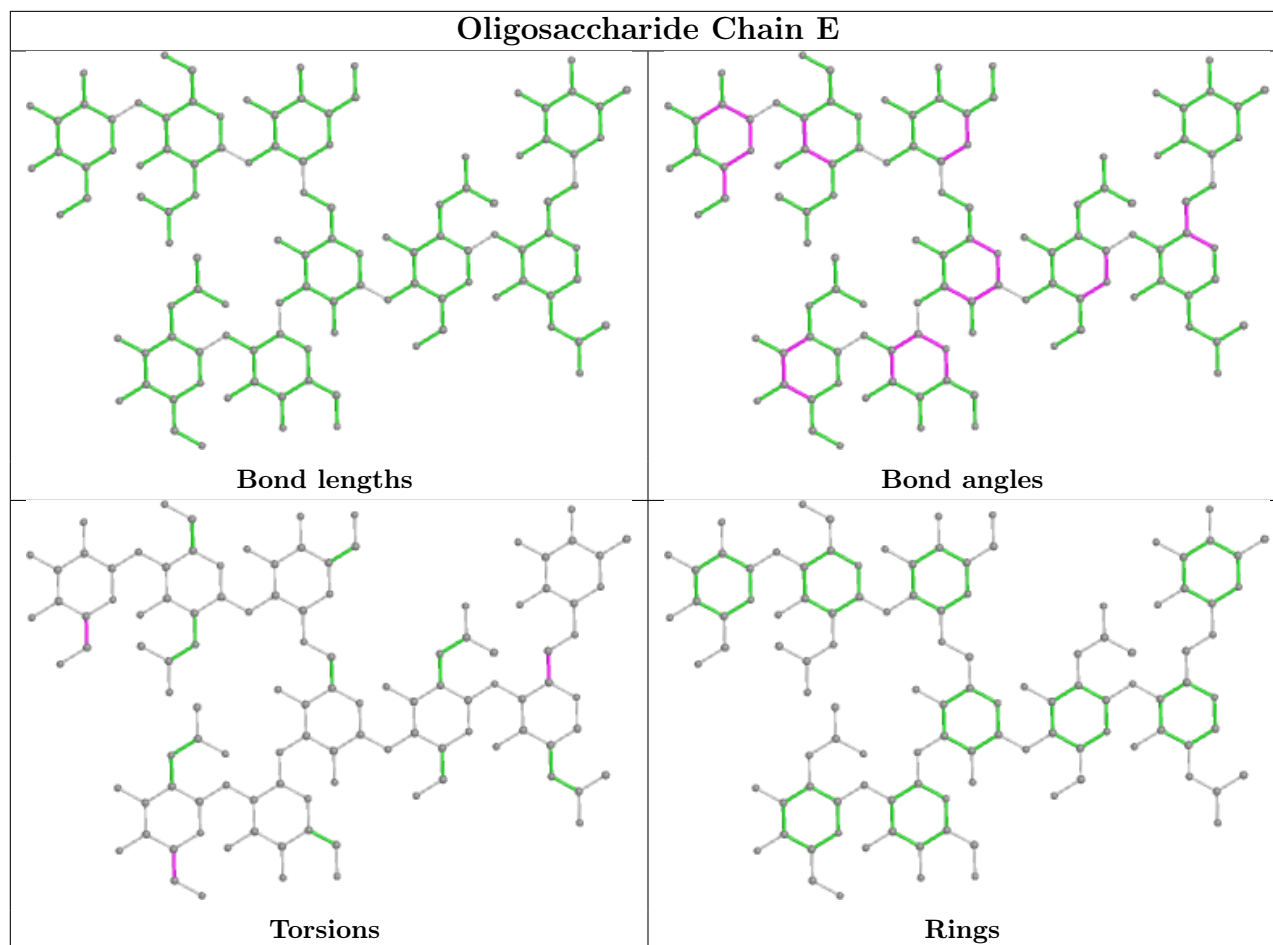
There are no ring outliers.

2 monomers are involved in 1 short contact:

Mol	Chain	Res	Type	Clashes	Symm-Clashes
4	E	9	FUL	1	0
4	E	2	NAG	1	0

The following is a two-dimensional graphical depiction of Mogul quality analysis of bond lengths, bond angles, torsion angles, and ring geometry for oligosaccharide.





5.6 Ligand geometry [i](#)

1 ligand is modelled in this entry.

In the following table, the Counts columns list the number of bonds (or angles) for which Mogul statistics could be retrieved, the number of bonds (or angles) that are observed in the model and the number of bonds (or angles) that are defined in the Chemical Component Dictionary. The Link column lists molecule types, if any, to which the group is linked. The Z score for a bond length (or angle) is the number of standard deviations the observed value is removed from the expected value. A bond length (or angle) with $|Z| > 2$ is considered an outlier worth inspection. RMSZ is the root-mean-square of all Z scores of the bond lengths (or angles).

Mol	Type	Chain	Res	Link	Bond lengths			Bond angles		
					Counts	RMSZ	# Z > 2	Counts	RMSZ	# Z > 2
5	NAG	C	1001	2	14,14,15	0.56	0	17,19,21	1.27	3 (17%)

In the following table, the Chirals column lists the number of chiral outliers, the number of chiral centers analysed, the number of these observed in the model and the number defined in the Chemical Component Dictionary. Similar counts are reported in the Torsion and Rings columns. '2' means no outliers of that kind were identified.

Mol	Type	Chain	Res	Link	Chirals	Torsions	Rings
5	NAG	C	1001	2	-	2/6/23/26	0/1/1/1

There are no bond length outliers.

All (3) bond angle outliers are listed below:

Mol	Chain	Res	Type	Atoms	Z	Observed(°)	Ideal(°)
5	C	1001	NAG	C3-C4-C5	2.96	115.52	110.24
5	C	1001	NAG	C4-C3-C2	2.30	114.39	111.02
5	C	1001	NAG	C1-O5-C5	2.04	114.96	112.19

There are no chirality outliers.

All (2) torsion outliers are listed below:

Mol	Chain	Res	Type	Atoms
5	C	1001	NAG	C4-C5-C6-O6
5	C	1001	NAG	O5-C5-C6-O6

There are no ring outliers.

No monomer is involved in short contacts.

5.7 Other polymers [i](#)

There are no such residues in this entry.

5.8 Polymer linkage issues [i](#)

There are no chain breaks in this entry.

6 Fit of model and data [i](#)

6.1 Protein, DNA and RNA chains [i](#)

In the following table, the column labelled ‘#RSRZ> 2’ contains the number (and percentage) of RSRZ outliers, followed by percent RSRZ outliers for the chain as percentile scores relative to all X-ray entries and entries of similar resolution. The OWAB column contains the minimum, median, 95th percentile and maximum values of the occupancy-weighted average B-factor per residue. The column labelled ‘Q< 0.9’ lists the number of (and percentage) of residues with an average occupancy less than 0.9.

Mol	Chain	Analysed	<RSRZ>	#RSRZ>2	OWAB(Å ²)	Q<0.9
1	A	212/230 (92%)	0.19	2 (0%) 84 84	31, 65, 122, 147	1 (0%)
1	B	208/230 (90%)	0.05	0 100 100	28, 58, 78, 89	1 (0%)
2	C	160/179 (89%)	0.49	8 (5%) 28 24	41, 67, 107, 127	0
All	All	580/639 (90%)	0.22	10 (1%) 70 68	28, 62, 107, 147	2 (0%)

The worst 5 of 10 RSRZ outliers are listed below:

Mol	Chain	Res	Type	RSRZ
2	C	48	THR	4.7
2	C	75	LEU	4.1
1	A	296	TYR	3.1
2	C	37	ILE	2.9
2	C	6	VAL	2.9

6.2 Non-standard residues in protein, DNA, RNA chains [i](#)

There are no non-standard protein/DNA/RNA residues in this entry.

6.3 Carbohydrates [i](#)

In the following table, the Atoms column lists the number of modelled atoms in the group and the number defined in the chemical component dictionary. The B-factors column lists the minimum, median, 95th percentile and maximum values of B factors of atoms in the group. The column labelled ‘Q< 0.9’ lists the number of atoms with occupancy less than 0.9.

Mol	Type	Chain	Res	Atoms	RSCC	RSR	B-factors(Å ²)	Q<0.9
3	NAG	D	1	14/15	0.67	0.29	120,137,152,154	0
3	GAL	D	6	11/12	0.74	0.28	125,129,132,137	0
3	NAG	D	8	14/15	0.76	0.27	120,126,132,133	0

Continued on next page...

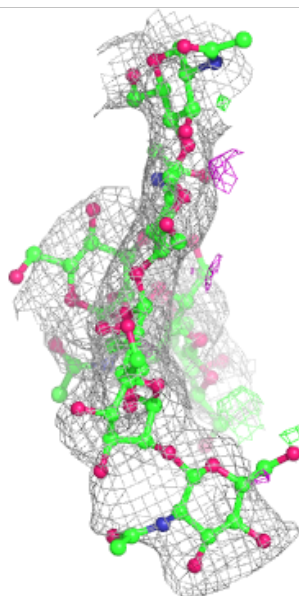
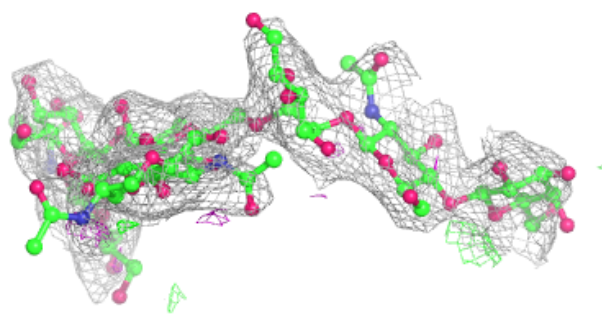
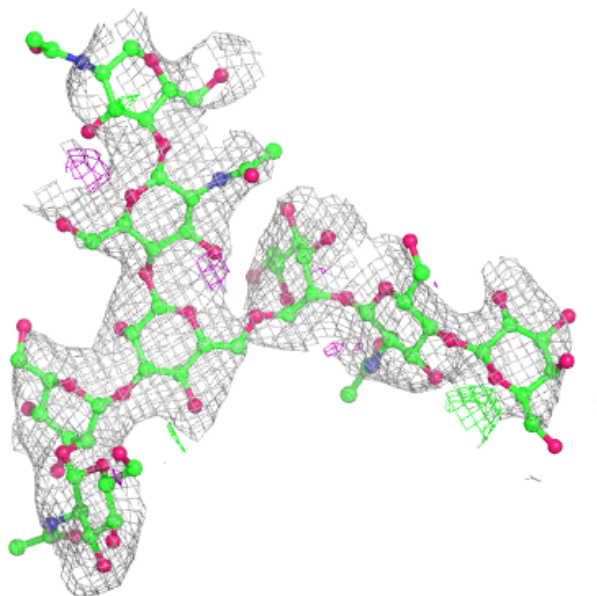
Continued from previous page...

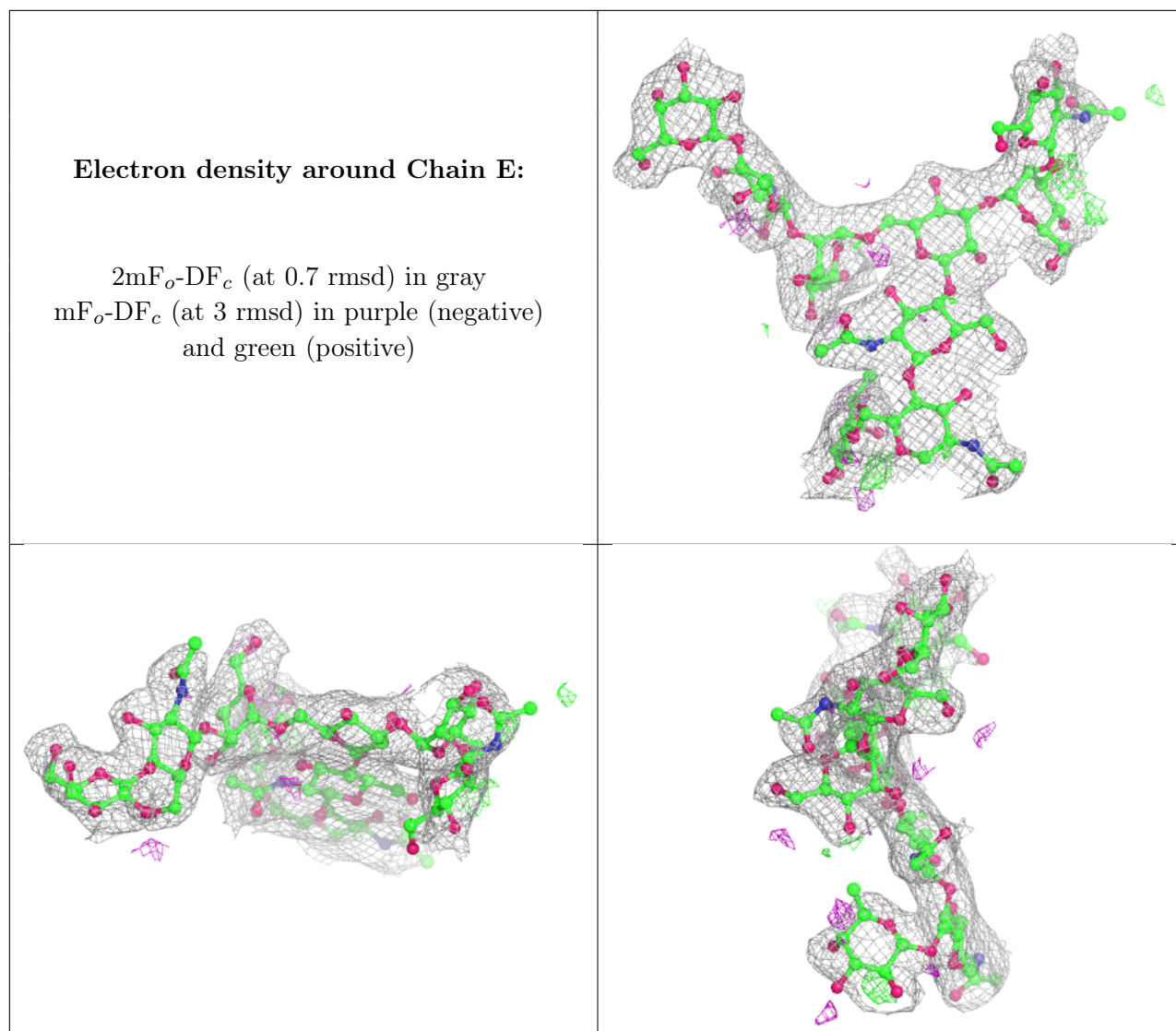
Mol	Type	Chain	Res	Atoms	RSCC	RSR	B-factors(\AA^2)	Q<0.9
4	NAG	E	8	14/15	0.78	0.24	102,109,111,112	0
3	MAN	D	4	11/12	0.82	0.16	97,106,109,109	0
3	NAG	D	5	14/15	0.85	0.25	108,114,120,127	0
3	BMA	D	3	11/12	0.86	0.16	101,106,110,113	0
4	FUL	E	9	10/11	0.86	0.24	66,70,73,75	0
3	NAG	D	2	14/15	0.88	0.21	106,116,126,127	0
4	MAN	E	7	11/12	0.90	0.16	73,79,83,94	0
3	MAN	D	7	11/12	0.93	0.16	111,114,122,123	0
4	NAG	E	1	14/15	0.94	0.22	41,49,58,61	0
4	MAN	E	4	11/12	0.94	0.17	53,59,59,61	0
4	NAG	E	5	14/15	0.94	0.17	56,65,69,70	0
4	GAL	E	6	11/12	0.95	0.16	56,60,62,62	0
4	NAG	E	2	14/15	0.96	0.19	35,40,41,43	0
4	BMA	E	3	11/12	0.96	0.18	48,49,54,62	0

The following is a graphical depiction of the model fit to experimental electron density for oligosaccharide. Each fit is shown from different orientation to approximate a three-dimensional view.

Electron density around Chain D:

$2mF_o-DF_c$ (at 0.7 rmsd) in gray
 mF_o-DF_c (at 3 rmsd) in purple (negative)
and green (positive)





6.4 Ligands [i](#)

In the following table, the Atoms column lists the number of modelled atoms in the group and the number defined in the chemical component dictionary. The B-factors column lists the minimum, median, 95th percentile and maximum values of B factors of atoms in the group. The column labelled 'Q < 0.9' lists the number of atoms with occupancy less than 0.9.

Mol	Type	Chain	Res	Atoms	RSCC	RSR	B-factors(Å ²)	Q<0.9
5	NAG	C	1001	14/15	0.92	0.23	78,82,87,90	0

6.5 Other polymers [i](#)

There are no such residues in this entry.