



# Full wwPDB X-ray Structure Validation Report ⓘ

Nov 6, 2023 – 11:06 PM EST

PDB ID : 5WDG  
Title : Acetolactate Synthase from *Klebsiella pneumoniae* in Complex with a Reaction Intermediate  
Authors : Latta, A.J.; Andrews, F.H.; McLeish, M.J.  
Deposited on : 2017-07-05  
Resolution : 2.12 Å (reported)

This is a Full wwPDB X-ray Structure Validation Report for a publicly released PDB entry.

We welcome your comments at [validation@mail.wwpdb.org](mailto:validation@mail.wwpdb.org)

A user guide is available at

<https://www.wwpdb.org/validation/2017/XrayValidationReportHelp>

with specific help available everywhere you see the ⓘ symbol.

The types of validation reports are described at

<http://www.wwpdb.org/validation/2017/FAQs#types>.

---

The following versions of software and data (see [references ⓘ](#)) were used in the production of this report:

MolProbity : 4.02b-467  
Mogul : 1.8.5 (274361), CSD as541be (2020)  
Xtriage (Phenix) : 1.13  
EDS : 2.36  
buster-report : 1.1.7 (2018)  
Percentile statistics : 20191225.v01 (using entries in the PDB archive December 25th 2019)  
Refmac : 5.8.0158  
CCP4 : 7.0.044 (Gargrove)  
Ideal geometry (proteins) : Engh & Huber (2001)  
Ideal geometry (DNA, RNA) : Parkinson et al. (1996)  
Validation Pipeline (wwPDB-VP) : 2.36

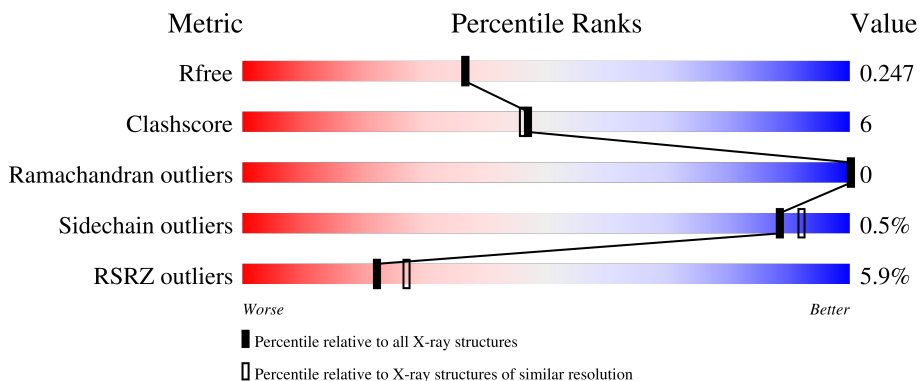
# 1 Overall quality at a glance

The following experimental techniques were used to determine the structure:

*X-RAY DIFFRACTION*

The reported resolution of this entry is 2.12 Å.

Percentile scores (ranging between 0-100) for global validation metrics of the entry are shown in the following graphic. The table shows the number of entries on which the scores are based.



Metric	Whole archive (#Entries)	Similar resolution (#Entries, resolution range(Å))
$R_{free}$	130704	6241 (2.14-2.10)
Clashscore	141614	6778 (2.14-2.10)
Ramachandran outliers	138981	6705 (2.14-2.10)
Sidechain outliers	138945	6706 (2.14-2.10)
RSRZ outliers	127900	6112 (2.14-2.10)

The table below summarises the geometric issues observed across the polymeric chains and their fit to the electron density. The red, orange, yellow and green segments of the lower bar indicate the fraction of residues that contain outliers for  $\geq 3$ , 2, 1 and 0 types of geometric quality criteria respectively. A grey segment represents the fraction of residues that are not modelled. The numeric value for each fraction is indicated below the corresponding segment, with a dot representing fractions  $\leq 5\%$ . The upper red bar (where present) indicates the fraction of residues that have poor fit to the electron density. The numeric value is given above the bar.

Mol	Chain	Length	Quality of chain
1	A	579	
1	B	579	

The following table lists non-polymeric compounds, carbohydrate monomers and non-standard residues in protein, DNA, RNA chains that are outliers for geometric or electron-density-fit criteria:

Mol	Type	Chain	Res	Chirality	Geometry	Clashes	Electron density
5	PYR	B	606	-	X	-	-

## 2 Entry composition i

There are 6 unique types of molecules in this entry. The entry contains 16599 atoms, of which 7946 are hydrogens and 0 are deuteriums.

In the tables below, the ZeroOcc column contains the number of atoms modelled with zero occupancy, the AltConf column contains the number of residues with at least one atom in alternate conformation and the Trace column contains the number of residues modelled with at most 2 atoms.

- Molecule 1 is a protein called Acetolactate synthase, catabolic.

Mol	Chain	Residues	Atoms						ZeroOcc	AltConf	Trace
			Total	C	H	N	O	S			
1	A	538	7867	2522	3889	688	749	19	0	1	0
1	B	554	8088	2592	4007	707	765	17	0	0	0

There are 42 discrepancies between the modelled and reference sequences:

Chain	Residue	Modelled	Actual	Comment	Reference
A	-19	MET	-	initiating methionine	UNP P27696
A	-18	GLY	-	expression tag	UNP P27696
A	-17	SER	-	expression tag	UNP P27696
A	-16	SER	-	expression tag	UNP P27696
A	-15	HIS	-	expression tag	UNP P27696
A	-14	HIS	-	expression tag	UNP P27696
A	-13	HIS	-	expression tag	UNP P27696
A	-12	HIS	-	expression tag	UNP P27696
A	-11	HIS	-	expression tag	UNP P27696
A	-10	HIS	-	expression tag	UNP P27696
A	-9	SER	-	expression tag	UNP P27696
A	-8	SER	-	expression tag	UNP P27696
A	-7	GLY	-	expression tag	UNP P27696
A	-6	LEU	-	expression tag	UNP P27696
A	-5	VAL	-	expression tag	UNP P27696
A	-4	PRO	-	expression tag	UNP P27696
A	-3	ARG	-	expression tag	UNP P27696
A	-2	GLY	-	expression tag	UNP P27696
A	-1	SER	-	expression tag	UNP P27696
A	0	HIS	-	expression tag	UNP P27696
A	407	SER	THR	conflict	UNP P27696
B	-19	MET	-	initiating methionine	UNP P27696
B	-18	GLY	-	expression tag	UNP P27696
B	-17	SER	-	expression tag	UNP P27696
B	-16	SER	-	expression tag	UNP P27696

*Continued on next page...*

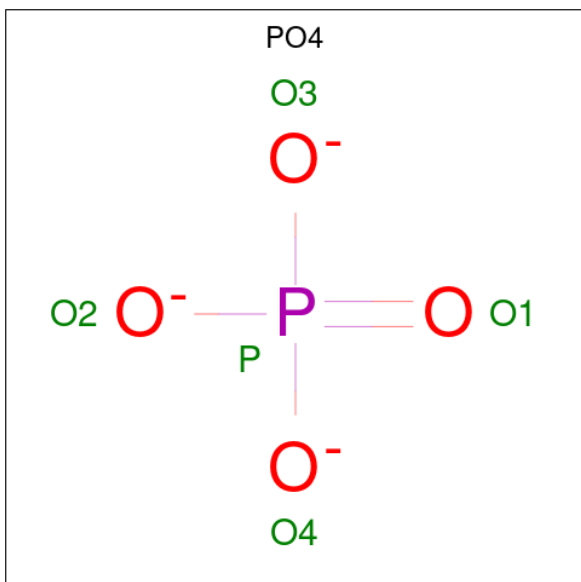
Continued from previous page...

Chain	Residue	Modelled	Actual	Comment	Reference
B	-15	HIS	-	expression tag	UNP P27696
B	-14	HIS	-	expression tag	UNP P27696
B	-13	HIS	-	expression tag	UNP P27696
B	-12	HIS	-	expression tag	UNP P27696
B	-11	HIS	-	expression tag	UNP P27696
B	-10	HIS	-	expression tag	UNP P27696
B	-9	SER	-	expression tag	UNP P27696
B	-8	SER	-	expression tag	UNP P27696
B	-7	GLY	-	expression tag	UNP P27696
B	-6	LEU	-	expression tag	UNP P27696
B	-5	VAL	-	expression tag	UNP P27696
B	-4	PRO	-	expression tag	UNP P27696
B	-3	ARG	-	expression tag	UNP P27696
B	-2	GLY	-	expression tag	UNP P27696
B	-1	SER	-	expression tag	UNP P27696
B	0	HIS	-	expression tag	UNP P27696
B	407	SER	THR	conflict	UNP P27696

- Molecule 2 is MAGNESIUM ION (three-letter code: MG) (formula: Mg).

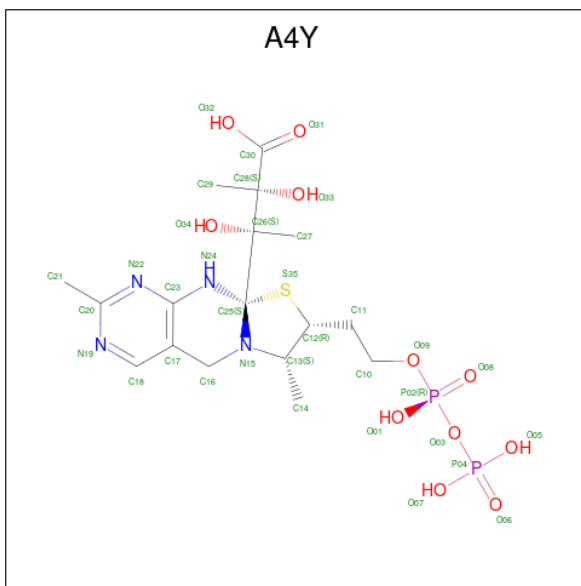
Mol	Chain	Residues	Atoms	ZeroOcc	AltConf
2	A	3	Total Mg 3 3	0	0
2	B	3	Total Mg 3 3	0	0

- Molecule 3 is PHOSPHATE ION (three-letter code: PO4) (formula: O<sub>4</sub>P).



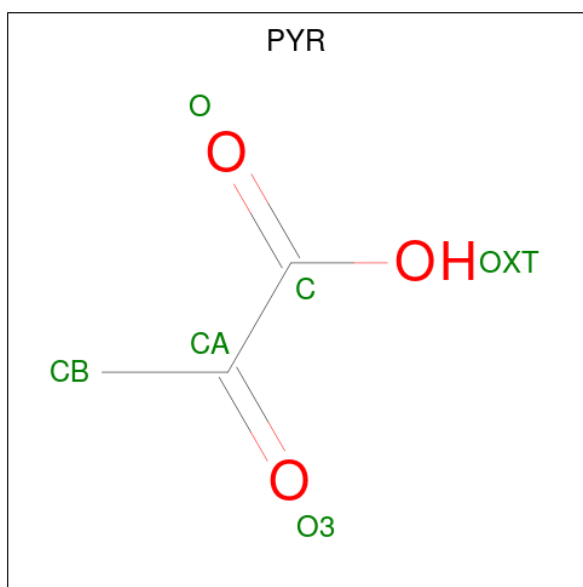
Mol	Chain	Residues	Atoms			ZeroOcc	AltConf
3	A	1	Total	O	P	0	0
			5	4	1		
3	B	1	Total	O	P	0	0
			5	4	1		

- Molecule 4 is (2S,3S)-2,3-dihydroxy-3-[(7S,8R,9aS)-8-(2-[(R)-hydroxy(phosphonoxy)phosphoryl]oxy)ethyl)-2,7-dimethyl-5,7,8,10-tetrahydro-9aH-pyrimido[4,5-d][1,3]thiazolo[3,2-a]pyrimidin-9a-yl]-2-methylbutanoic acid (three-letter code: A4Y) (formula: C<sub>17</sub>H<sub>28</sub>N<sub>4</sub>O<sub>11</sub>P<sub>2</sub>S).



Mol	Chain	Residues	Atoms						ZeroOcc	AltConf	
4	A	1	Total	C	H	N	O	P	S	0	0
			57	17	22	4	11	2	1		
4	B	1	Total	C	H	N	O	P	S	0	0
			57	17	22	4	11	2	1		

- Molecule 5 is PYRUVIC ACID (three-letter code: PYR) (formula: C<sub>3</sub>H<sub>4</sub>O<sub>3</sub>).



Mol	Chain	Residues	Atoms			ZeroOcc	AltConf	
			Total	C	H			O
5	A	1	9	3	3	3	0	0
5	B	1	9	3	3	3	0	0

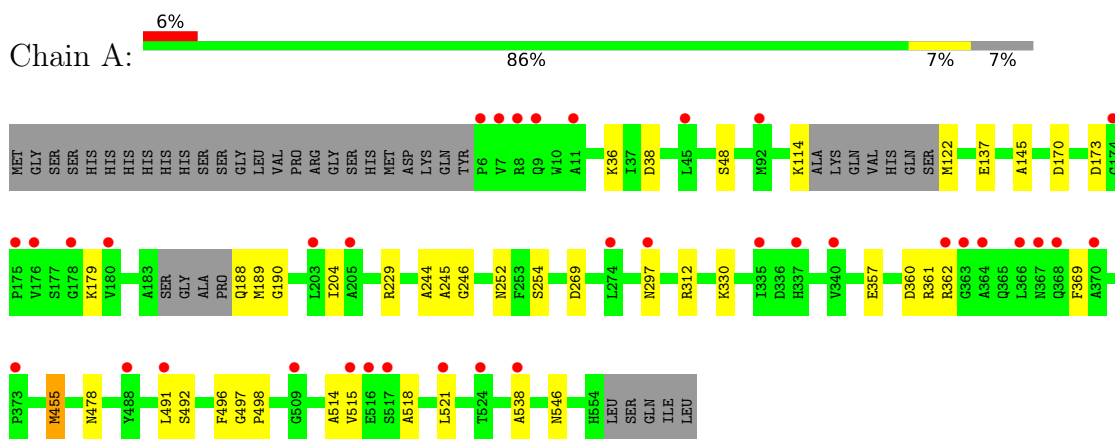
- Molecule 6 is water.

Mol	Chain	Residues	Atoms		ZeroOcc	AltConf
			Total	O		
6	A	212	212	212	0	0
6	B	284	284	284	0	0

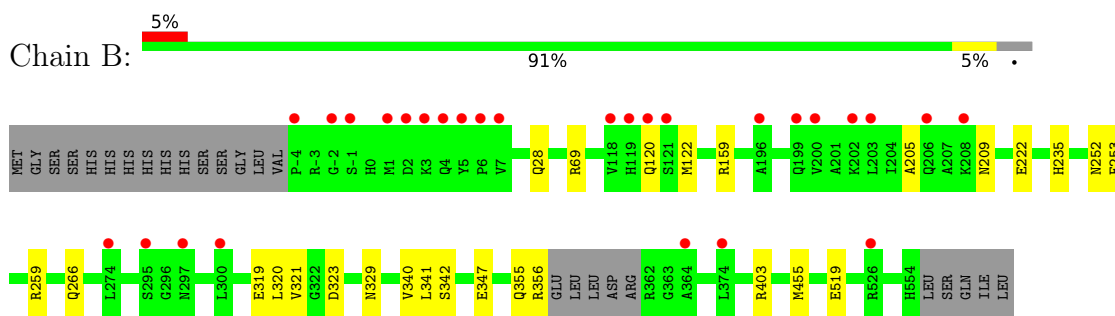
### 3 Residue-property plots [i](#)

These plots are drawn for all protein, RNA, DNA and oligosaccharide chains in the entry. The first graphic for a chain summarises the proportions of the various outlier classes displayed in the second graphic. The second graphic shows the sequence view annotated by issues in geometry and electron density. Residues are color-coded according to the number of geometric quality criteria for which they contain at least one outlier: green = 0, yellow = 1, orange = 2 and red = 3 or more. A red dot above a residue indicates a poor fit to the electron density ( $RSRZ > 2$ ). Stretches of 2 or more consecutive residues without any outlier are shown as a green connector. Residues present in the sample, but not in the model, are shown in grey.

- Molecule 1: Acetolactate synthase, catabolic



- Molecule 1: Acetolactate synthase, catabolic





## 4 Data and refinement statistics

Property	Value	Source
Space group	I 1 2 1	Depositor
Cell constants a, b, c, $\alpha$ , $\beta$ , $\gamma$	85.47Å 134.41Å 110.75Å 90.00° 95.45° 90.00°	Depositor
Resolution (Å)	55.12 – 2.12 55.12 – 2.12	Depositor EDS
% Data completeness (in resolution range)	99.8 (55.12-2.12) 93.4 (55.12-2.12)	Depositor EDS
$R_{merge}$	0.13	Depositor
$R_{sym}$	(Not available)	Depositor
$\langle I/\sigma(I) \rangle$ <sup>1</sup>	1.08 (at 2.12Å)	Xtrriage
Refinement program	PHENIX 1.10.1_2155	Depositor
R, $R_{free}$	0.204 , 0.247 0.205 , 0.247	Depositor DCC
$R_{free}$ test set	3531 reflections (4.99%)	wwPDB-VP
Wilson B-factor (Å <sup>2</sup> )	27.9	Xtrriage
Anisotropy	0.279	Xtrriage
Bulk solvent $k_{sol}$ (e/Å <sup>3</sup> ), $B_{sol}$ (Å <sup>2</sup> )	0.39 , 48.6	EDS
L-test for twinning <sup>2</sup>	$\langle  L  \rangle = 0.49$ , $\langle L^2 \rangle = 0.32$	Xtrriage
Estimated twinning fraction	No twinning to report.	Xtrriage
$F_o, F_c$ correlation	0.94	EDS
Total number of atoms	16599	wwPDB-VP
Average B, all atoms (Å <sup>2</sup> )	50.0	wwPDB-VP

Xtrriage's analysis on translational NCS is as follows: *The largest off-origin peak in the Patterson function is 3.90% of the height of the origin peak. No significant pseudotranslation is detected.*

<sup>1</sup>Intensities estimated from amplitudes.

<sup>2</sup>Theoretical values of  $\langle |L| \rangle$ ,  $\langle L^2 \rangle$  for acentric reflections are 0.5, 0.333 respectively for untwinned datasets, and 0.375, 0.2 for perfectly twinned datasets.

## 5 Model quality [i](#)

### 5.1 Standard geometry [i](#)

Bond lengths and bond angles in the following residue types are not validated in this section: MG, PYR, PO4, A4Y

The Z score for a bond length (or angle) is the number of standard deviations the observed value is removed from the expected value. A bond length (or angle) with  $|Z| > 5$  is considered an outlier worth inspection. RMSZ is the root-mean-square of all Z scores of the bond lengths (or angles).

Mol	Chain	Bond lengths		Bond angles	
		RMSZ	# Z  >5	RMSZ	# Z  >5
1	A	0.24	0/4058	0.42	0/5531
1	B	0.24	0/4162	0.42	0/5672
All	All	0.24	0/8220	0.42	0/11203

There are no bond length outliers.

There are no bond angle outliers.

There are no chirality outliers.

There are no planarity outliers.

### 5.2 Too-close contacts [i](#)

In the following table, the Non-H and H(model) columns list the number of non-hydrogen atoms and hydrogen atoms in the chain respectively. The H(added) column lists the number of hydrogen atoms added and optimized by MolProbity. The Clashes column lists the number of clashes within the asymmetric unit, whereas Symm-Clashes lists symmetry-related clashes.

Mol	Chain	Non-H	H(model)	H(added)	Clashes	Symm-Clashes
1	A	3978	3889	3891	63	0
1	B	4081	4007	4009	36	0
2	A	3	0	0	0	0
2	B	3	0	0	0	0
3	A	5	0	0	0	0
3	B	5	0	0	1	0
4	A	35	22	0	1	0
4	B	35	22	0	0	0
5	A	6	3	0	0	0
5	B	6	3	0	0	0
6	A	212	0	0	59	1

*Continued on next page...*

*Continued from previous page...*

Mol	Chain	Non-H	H(model)	H(added)	Clashes	Symm-Clashes
6	B	284	0	0	33	2
All	All	8653	7946	7900	100	2

The all-atom clashscore is defined as the number of clashes found per 1000 atoms (including hydrogen atoms). The all-atom clashscore for this structure is 6.

All (100) close contacts within the same asymmetric unit are listed below, sorted by their clash magnitude.

Atom-1	Atom-2	Interatomic distance (Å)	Clash overlap (Å)
1:B:159:ARG:HB2	6:B:702:HOH:O	1.26	1.27
1:A:521:LEU:HD23	6:A:704:HOH:O	1.39	1.19
1:B:159:ARG:NE	6:B:702:HOH:O	1.93	0.99
1:A:538:ALA:N	6:A:703:HOH:O	1.92	0.96
1:B:355:GLN:HG3	6:B:710:HOH:O	1.64	0.96
1:A:492:SER:N	6:A:707:HOH:O	1.99	0.96
1:A:189:MET:CA	6:A:706:HOH:O	2.11	0.95
1:A:312:ARG:O	6:A:701:HOH:O	1.85	0.94
1:A:189:MET:SD	6:A:901:HOH:O	2.26	0.94
1:A:189:MET:CB	6:A:706:HOH:O	2.13	0.94
1:A:498:PRO:N	6:A:702:HOH:O	1.99	0.94
1:A:491:LEU:C	6:A:707:HOH:O	2.06	0.93
1:A:229:ARG:NH1	6:A:709:HOH:O	2.03	0.92
1:A:189:MET:HB3	6:A:706:HOH:O	1.70	0.92
1:A:229:ARG:HD3	6:A:709:HOH:O	1.70	0.91
1:B:329:ASN:OD1	6:B:701:HOH:O	1.89	0.91
1:A:498:PRO:O	6:A:702:HOH:O	1.89	0.90
1:B:355:GLN:CG	6:B:710:HOH:O	2.21	0.87
1:A:330:LYS:NZ	6:A:712:HOH:O	2.06	0.86
1:A:518:ALA:O	6:A:704:HOH:O	1.94	0.85
1:B:355:GLN:N	6:B:710:HOH:O	2.10	0.85
1:A:245:ALA:N	6:A:716:HOH:O	2.12	0.82
1:B:252:ASN:O	6:B:704:HOH:O	1.98	0.82
1:A:122:MET:N	6:A:718:HOH:O	2.14	0.81
1:A:229:ARG:CZ	6:A:709:HOH:O	2.29	0.80
1:B:209:ASN:O	6:B:705:HOH:O	1.99	0.80
1:A:190:GLY:N	6:A:706:HOH:O	1.96	0.78
1:A:145:ALA:N	6:A:715:HOH:O	2.11	0.78
1:A:48:SER:OG	6:A:708:HOH:O	2.01	0.78
1:B:235:HIS:ND1	6:B:713:HOH:O	2.17	0.78
1:A:360:ASP:HA	6:A:733:HOH:O	1.85	0.77
1:B:222:GLU:CD	6:B:706:HOH:O	2.22	0.77

*Continued on next page...*

*Continued from previous page...*

Atom-1	Atom-2	Interatomic distance (Å)	Clash overlap (Å)
1:A:496:PHE:O	6:A:710:HOH:O	2.03	0.76
1:B:222:GLU:OE2	6:B:706:HOH:O	2.01	0.76
1:A:515:VAL:O	6:A:711:HOH:O	2.04	0.76
1:B:347:GLU:OE2	6:B:707:HOH:O	2.05	0.74
1:A:492:SER:CA	6:A:707:HOH:O	2.34	0.73
1:A:254:SER:O	6:A:713:HOH:O	2.06	0.72
1:A:229:ARG:CD	6:A:709:HOH:O	2.32	0.72
1:A:173:ASP:OD2	6:A:714:HOH:O	2.08	0.72
1:A:189:MET:HA	6:A:706:HOH:O	1.85	0.72
1:B:356:ARG:O	6:B:709:HOH:O	2.08	0.71
1:B:253:PHE:HB2	6:B:704:HOH:O	1.90	0.71
1:B:340:VAL:O	6:B:708:HOH:O	2.07	0.71
1:B:122:MET:HA	6:B:751:HOH:O	1.91	0.71
1:A:538:ALA:CA	6:A:703:HOH:O	2.38	0.67
1:B:355:GLN:CA	6:B:710:HOH:O	2.42	0.67
1:A:498:PRO:CD	6:A:702:HOH:O	2.38	0.67
1:A:38:ASP:OD1	6:A:717:HOH:O	2.13	0.66
1:A:137:GLU:OE1	6:A:719:HOH:O	2.14	0.66
1:A:145:ALA:HB3	6:A:715:HOH:O	1.96	0.66
1:B:323:ASP:OD2	6:B:712:HOH:O	2.14	0.65
1:B:235:HIS:CG	6:B:713:HOH:O	2.49	0.64
1:A:204:ILE:O	6:A:720:HOH:O	2.15	0.64
1:B:205:ALA:N	6:B:721:HOH:O	2.30	0.63
1:B:320:LEU:HA	6:B:711:HOH:O	1.99	0.62
1:B:342:SER:N	6:B:708:HOH:O	2.32	0.61
1:A:48:SER:CB	6:A:708:HOH:O	2.47	0.61
1:B:321:VAL:N	6:B:711:HOH:O	2.11	0.61
1:A:521:LEU:CD2	6:A:704:HOH:O	2.15	0.60
1:A:538:ALA:O	6:A:703:HOH:O	2.16	0.60
1:A:497:GLY:C	6:A:702:HOH:O	2.34	0.60
1:A:361:ARG:N	6:A:733:HOH:O	2.33	0.60
1:B:235:HIS:CE1	6:B:713:HOH:O	2.57	0.58
1:B:252:ASN:C	6:B:704:HOH:O	2.40	0.57
1:A:269:ASP:OD2	6:A:721:HOH:O	2.17	0.56
1:A:229:ARG:NE	6:A:709:HOH:O	2.38	0.56
1:A:244:ALA:C	6:A:716:HOH:O	2.42	0.56
1:A:114:LYS:NZ	6:A:719:HOH:O	2.40	0.55
1:A:361:ARG:CB	1:A:362:ARG:CA	2.84	0.55
1:A:498:PRO:HD2	6:A:702:HOH:O	2.05	0.54
1:B:266:GLN:OE1	1:B:403:ARG:NH2	2.37	0.54
1:A:361:ARG:CB	1:A:362:ARG:HA	2.38	0.54

*Continued on next page...*

Continued from previous page...

Atom-1	Atom-2	Interatomic distance (Å)	Clash overlap (Å)
1:A:514:ALA:HA	6:A:703:HOH:O	2.08	0.53
4:A:605:A4Y:P04	6:A:729:HOH:O	2.66	0.52
1:A:297:ASN:C	6:A:726:HOH:O	2.49	0.50
1:A:36:LYS:HG2	6:A:830:HOH:O	2.11	0.50
1:A:538:ALA:HB3	6:A:703:HOH:O	2.10	0.50
1:A:188:GLN:N	6:A:740:HOH:O	2.43	0.49
1:B:347:GLU:HB3	6:B:727:HOH:O	2.11	0.49
1:A:145:ALA:CB	6:A:715:HOH:O	2.58	0.49
1:B:120:GLN:NE2	6:B:734:HOH:O	2.48	0.47
1:A:246:GLY:N	6:A:716:HOH:O	2.14	0.47
1:A:538:ALA:CB	6:A:703:HOH:O	2.62	0.47
1:B:69:ARG:NH1	6:B:715:HOH:O	2.25	0.47
1:B:320:LEU:CA	6:B:711:HOH:O	2.59	0.46
1:A:357:GLU:OE1	6:A:722:HOH:O	2.20	0.45
1:B:159:ARG:CD	6:B:702:HOH:O	2.50	0.45
1:A:478:ASN:OD1	1:A:546:ASN:ND2	2.49	0.44
1:B:341:LEU:C	6:B:708:HOH:O	2.56	0.44
1:A:455:MET:HE2	6:A:734:HOH:O	2.18	0.44
1:A:170:ASP:N	1:A:170:ASP:OD1	2.51	0.42
1:B:69:ARG:NH2	6:B:715:HOH:O	2.50	0.42
1:A:360:ASP:CA	6:A:733:HOH:O	2.55	0.41
1:B:319:GLU:O	6:B:711:HOH:O	2.21	0.41
1:A:455:MET:CE	6:A:734:HOH:O	2.69	0.41
1:A:252:ASN:OD1	1:A:252:ASN:N	2.54	0.41
1:A:179:LYS:O	6:A:724:HOH:O	2.22	0.41
1:B:259:ARG:NH1	3:B:604:PO4:O3	2.54	0.41
1:B:519:GLU:OE1	1:B:519:GLU:N	2.54	0.41

All (2) symmetry-related close contacts are listed below. The label for Atom-2 includes the symmetry operator and encoded unit-cell translations to be applied.

Atom-1	Atom-2	Interatomic distance (Å)	Clash overlap (Å)
6:A:880:HOH:O	6:B:948:HOH:O[4_454]	2.04	0.16
6:B:804:HOH:O	6:B:918:HOH:O[2_555]	2.19	0.01

## 5.3 Torsion angles [i](#)

### 5.3.1 Protein backbone [i](#)

In the following table, the Percentiles column shows the percent Ramachandran outliers of the chain as a percentile score with respect to all X-ray entries followed by that with respect to entries of similar resolution.

The Analysed column shows the number of residues for which the backbone conformation was analysed, and the total number of residues.

Mol	Chain	Analysed	Favoured	Allowed	Outliers	Percentiles	
1	A	533/579 (92%)	519 (97%)	14 (3%)	0	100	100
1	B	550/579 (95%)	528 (96%)	22 (4%)	0	100	100
All	All	1083/1158 (94%)	1047 (97%)	36 (3%)	0	100	100

There are no Ramachandran outliers to report.

### 5.3.2 Protein sidechains [i](#)

In the following table, the Percentiles column shows the percent sidechain outliers of the chain as a percentile score with respect to all X-ray entries followed by that with respect to entries of similar resolution.

The Analysed column shows the number of residues for which the sidechain conformation was analysed, and the total number of residues.

Mol	Chain	Analysed	Rotameric	Outliers	Percentiles	
1	A	402/462 (87%)	400 (100%)	2 (0%)	88	92
1	B	410/462 (89%)	408 (100%)	2 (0%)	88	92
All	All	812/924 (88%)	808 (100%)	4 (0%)	88	92

All (4) residues with a non-rotameric sidechain are listed below:

Mol	Chain	Res	Type
1	A	369	PHE
1	A	455	MET
1	B	28	GLN
1	B	455	MET

Sometimes sidechains can be flipped to improve hydrogen bonding and reduce clashes. There are no such sidechains identified.

### 5.3.3 RNA [i](#)

There are no RNA molecules in this entry.

## 5.4 Non-standard residues in protein, DNA, RNA chains [i](#)

There are no non-standard protein/DNA/RNA residues in this entry.

## 5.5 Carbohydrates [i](#)

There are no monosaccharides in this entry.

## 5.6 Ligand geometry [i](#)

Of 12 ligands modelled in this entry, 6 are monoatomic - leaving 6 for Mogul analysis.

In the following table, the Counts columns list the number of bonds (or angles) for which Mogul statistics could be retrieved, the number of bonds (or angles) that are observed in the model and the number of bonds (or angles) that are defined in the Chemical Component Dictionary. The Link column lists molecule types, if any, to which the group is linked. The Z score for a bond length (or angle) is the number of standard deviations the observed value is removed from the expected value. A bond length (or angle) with  $|Z| > 2$  is considered an outlier worth inspection. RMSZ is the root-mean-square of all Z scores of the bond lengths (or angles).

Mol	Type	Chain	Res	Link	Bond lengths			Bond angles		
					Counts	RMSZ	# Z  > 2	Counts	RMSZ	# Z  > 2
3	PO4	B	604	-	4,4,4	0.94	0	6,6,6	0.43	0
5	PYR	B	606	-	5,5,5	2.90	3 (60%)	3,6,6	1.57	1 (33%)
5	PYR	A	606	-	5,5,5	2.88	3 (60%)	3,6,6	1.61	1 (33%)
4	A4Y	B	605	2	29,37,37	2.98	4 (13%)	35,61,61	1.91	10 (28%)
3	PO4	A	604	-	4,4,4	0.92	0	6,6,6	0.42	0
4	A4Y	A	605	2	29,37,37	3.26	6 (20%)	35,61,61	2.13	11 (31%)

In the following table, the Chirals column lists the number of chiral outliers, the number of chiral centers analysed, the number of these observed in the model and the number defined in the Chemical Component Dictionary. Similar counts are reported in the Torsion and Rings columns. '-' means no outliers of that kind were identified.

Mol	Type	Chain	Res	Link	Chirals	Torsions	Rings
4	A4Y	A	605	2	-	16/25/65/65	0/3/3/3
5	PYR	A	606	-	-	0/4/4/4	-
4	A4Y	B	605	2	-	13/25/65/65	0/3/3/3

*Continued on next page...*

*Continued from previous page...*

Mol	Type	Chain	Res	Link	Chirals	Torsions	Rings
5	PYR	B	606	-	-	2/4/4/4	-

All (16) bond length outliers are listed below:

Mol	Chain	Res	Type	Atoms	Z	Observed(Å)	Ideal(Å)
4	A	605	A4Y	C12-S35	-12.71	1.53	1.81
4	B	605	A4Y	C12-S35	-11.86	1.55	1.81
4	A	605	A4Y	C25-S35	-8.28	1.72	1.88
4	B	605	A4Y	C25-S35	-7.72	1.73	1.88
4	A	605	A4Y	C17-C23	-5.36	1.35	1.41
5	B	606	PYR	CA-C	-4.18	1.39	1.54
5	A	606	PYR	CA-C	-4.13	1.39	1.54
4	B	605	A4Y	C17-C23	-3.99	1.37	1.41
5	B	606	PYR	O3-CA	3.68	1.31	1.23
5	A	606	PYR	O3-CA	3.66	1.31	1.23
4	A	605	A4Y	C16-N15	-3.38	1.42	1.47
4	B	605	A4Y	C16-N15	-3.37	1.42	1.47
5	B	606	PYR	O-C	3.30	1.31	1.22
5	A	606	PYR	O-C	3.29	1.31	1.22
4	A	605	A4Y	C13-N15	3.05	1.50	1.47
4	A	605	A4Y	O34-C26	-2.01	1.40	1.44

All (23) bond angle outliers are listed below:

Mol	Chain	Res	Type	Atoms	Z	Observed(°)	Ideal(°)
4	A	605	A4Y	C29-C28-C30	-4.92	101.24	109.37
4	B	605	A4Y	C29-C28-C30	-4.72	101.56	109.37
4	A	605	A4Y	C13-C12-S35	4.45	111.41	104.81
4	A	605	A4Y	O32-C30-C28	4.30	121.09	113.79
4	B	605	A4Y	C11-C12-C13	4.27	122.04	116.14
4	B	605	A4Y	O32-C30-C28	3.29	119.38	113.79
4	B	605	A4Y	C13-C12-S35	3.21	109.58	104.81
4	B	605	A4Y	C17-C18-N19	-3.19	118.50	123.82
4	A	605	A4Y	C17-C18-N19	-3.17	118.53	123.82
4	A	605	A4Y	P02-O03-P04	-3.16	121.98	132.83
4	A	605	A4Y	C11-C12-S35	3.10	121.22	112.64
4	B	605	A4Y	C18-N19-C20	3.02	121.10	115.96
4	A	605	A4Y	C18-C17-C23	2.93	119.61	115.66
4	A	605	A4Y	C18-N19-C20	2.82	120.76	115.96
4	A	605	A4Y	C11-C12-C13	2.76	119.96	116.14
4	B	605	A4Y	C18-C17-C23	2.74	119.36	115.66
4	A	605	A4Y	C17-C23-N22	-2.44	118.64	122.44

*Continued on next page...*



*Continued from previous page...*

Mol	Chain	Res	Type	Atoms	Z	Observed(°)	Ideal(°)
4	B	605	A4Y	P02-O03-P04	-2.33	124.84	132.83
4	A	605	A4Y	O31-C30-C28	-2.31	119.40	122.17
4	B	605	A4Y	C17-C23-N22	-2.28	118.89	122.44
5	B	606	PYR	OXT-C-CA	2.24	120.09	113.97
5	A	606	PYR	OXT-C-CA	2.23	120.07	113.97
4	B	605	A4Y	C21-C20-N22	2.15	120.51	117.15

There are no chirality outliers.

All (31) torsion outliers are listed below:

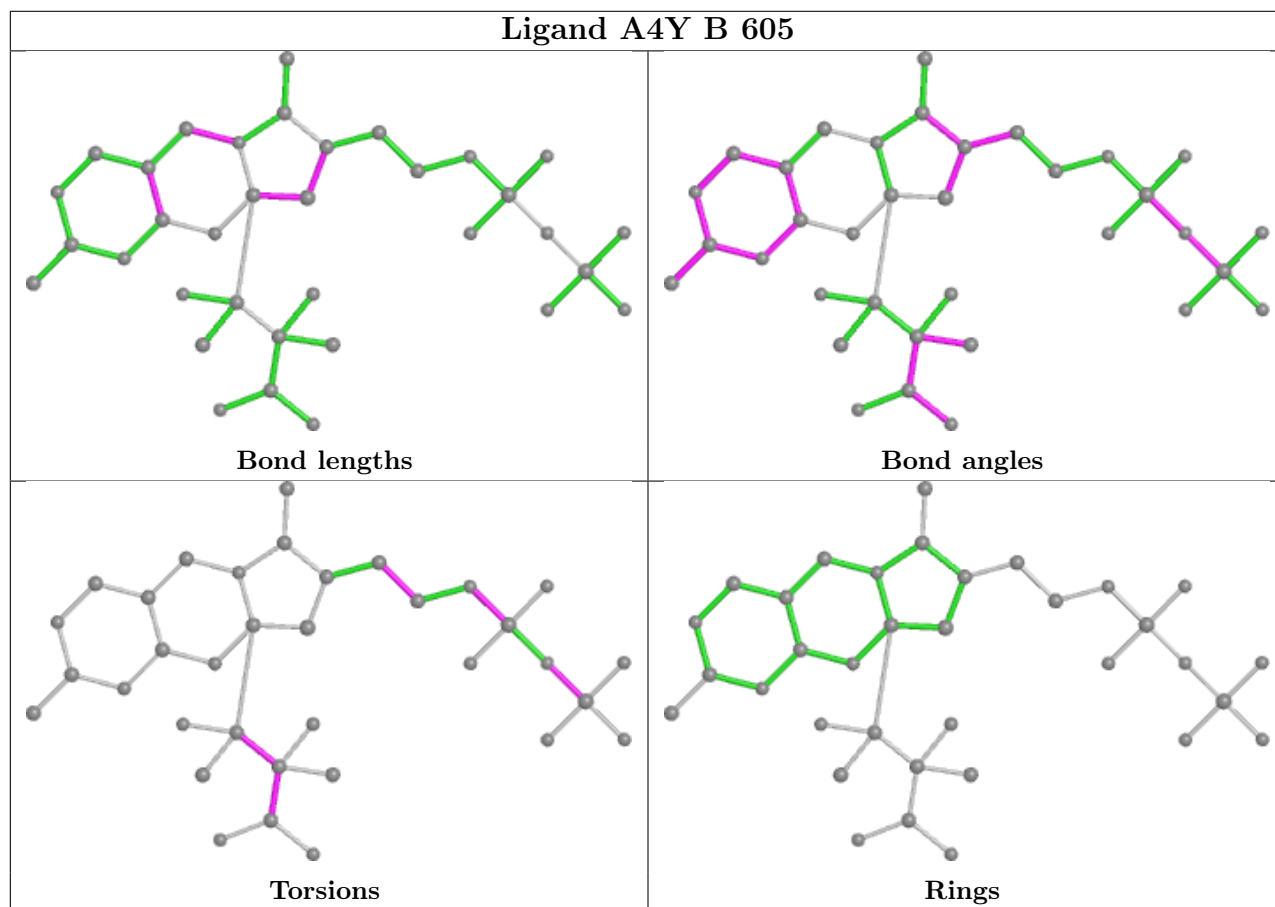
Mol	Chain	Res	Type	Atoms
4	A	605	A4Y	O09-C10-C11-C12
4	A	605	A4Y	C25-C26-C28-O33
4	A	605	A4Y	C27-C26-C28-C29
4	A	605	A4Y	C27-C26-C28-C30
4	A	605	A4Y	C27-C26-C28-O33
4	A	605	A4Y	O34-C26-C28-C29
4	A	605	A4Y	O34-C26-C28-C30
4	A	605	A4Y	O34-C26-C28-O33
4	A	605	A4Y	O33-C28-C30-O32
4	A	605	A4Y	C10-O09-P02-O03
4	A	605	A4Y	P02-O03-P04-O07
4	A	605	A4Y	C10-C11-C12-S35
4	B	605	A4Y	C25-C26-C28-O33
4	B	605	A4Y	C27-C26-C28-C29
4	B	605	A4Y	C27-C26-C28-C30
4	B	605	A4Y	C27-C26-C28-O33
4	B	605	A4Y	O34-C26-C28-C29
4	B	605	A4Y	O34-C26-C28-C30
4	B	605	A4Y	O34-C26-C28-O33
4	B	605	A4Y	O33-C28-C30-O32
4	B	605	A4Y	C10-O09-P02-O03
4	B	605	A4Y	P02-O03-P04-O07
5	B	606	PYR	OXT-C-CA-CB
4	A	605	A4Y	C10-C11-C12-C13
5	B	606	PYR	O-C-CA-CB
4	A	605	A4Y	C10-O09-P02-O01
4	B	605	A4Y	C10-O09-P02-O08
4	B	605	A4Y	O33-C28-C30-O31
4	B	605	A4Y	O09-C10-C11-C12
4	A	605	A4Y	P02-O03-P04-O05
4	A	605	A4Y	P02-O03-P04-O06

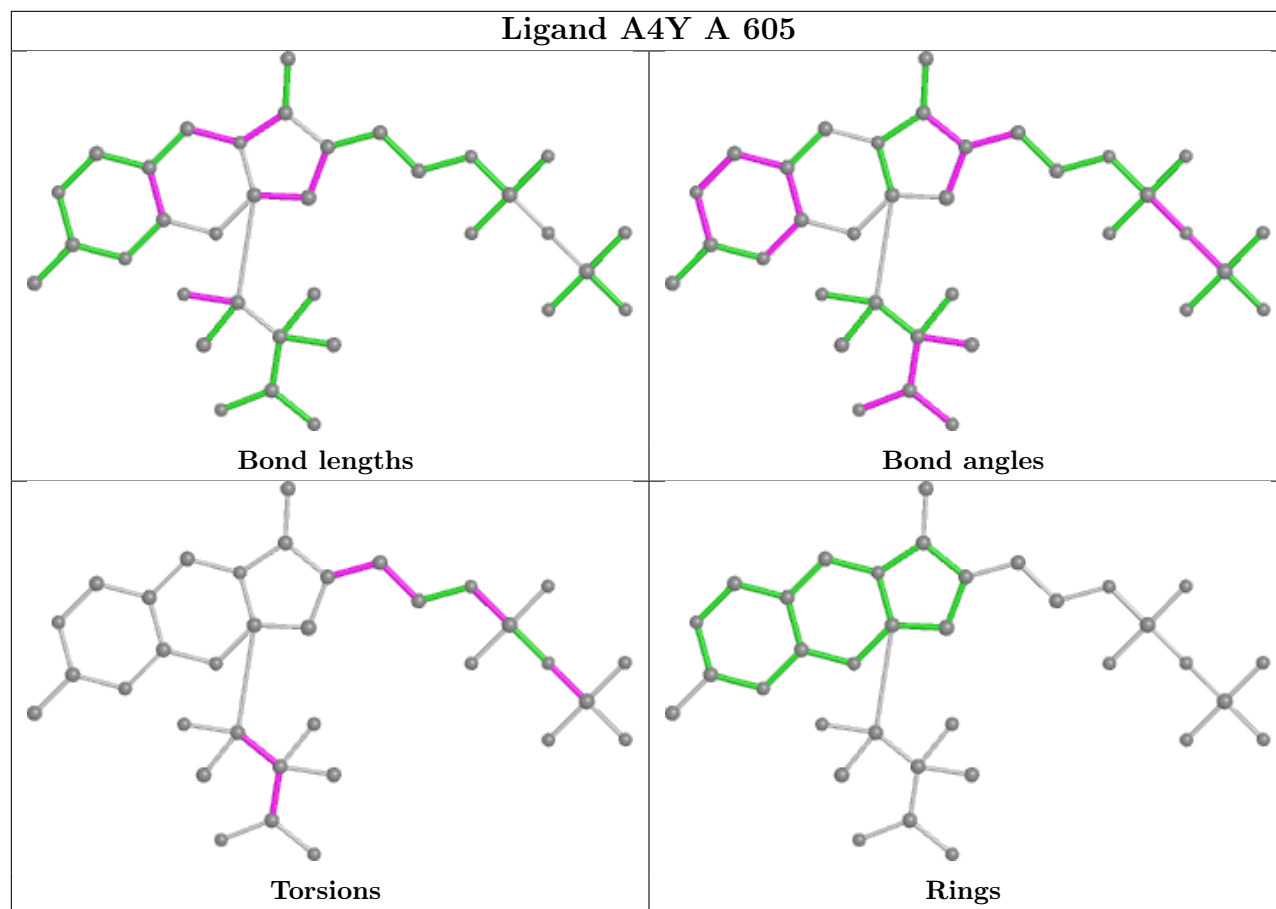
There are no ring outliers.

2 monomers are involved in 2 short contacts:

Mol	Chain	Res	Type	Clashes	Symm-Clashes
3	B	604	PO4	1	0
4	A	605	A4Y	1	0

The following is a two-dimensional graphical depiction of Mogul quality analysis of bond lengths, bond angles, torsion angles, and ring geometry for all instances of the Ligand of Interest. In addition, ligands with molecular weight > 250 and outliers as shown on the validation Tables will also be included. For torsion angles, if less than 5% of the Mogul distribution of torsion angles is within 10 degrees of the torsion angle in question, then that torsion angle is considered an outlier. Any bond that is central to one or more torsion angles identified as an outlier by Mogul will be highlighted in the graph. For rings, the root-mean-square deviation (RMSD) between the ring in question and similar rings identified by Mogul is calculated over all ring torsion angles. If the average RMSD is greater than 60 degrees and the minimal RMSD between the ring in question and any Mogul-identified rings is also greater than 60 degrees, then that ring is considered an outlier. The outliers are highlighted in purple. The color gray indicates Mogul did not find sufficient equivalents in the CSD to analyse the geometry.





## 5.7 Other polymers [\(i\)](#)

There are no such residues in this entry.

## 5.8 Polymer linkage issues [\(i\)](#)

There are no chain breaks in this entry.

## 6 Fit of model and data

### 6.1 Protein, DNA and RNA chains

In the following table, the column labelled ‘#RSRZ > 2’ contains the number (and percentage) of RSRZ outliers, followed by percent RSRZ outliers for the chain as percentile scores relative to all X-ray entries and entries of similar resolution. The OWAB column contains the minimum, median, 95<sup>th</sup> percentile and maximum values of the occupancy-weighted average B-factor per residue. The column labelled ‘Q < 0.9’ lists the number of (and percentage) of residues with an average occupancy less than 0.9.

Mol	Chain	Analysed	<RSRZ>	#RSRZ>2	OWAB(Å <sup>2</sup> )	Q<0.9
1	A	538/579 (92%)	0.61	36 (6%) 17 22	24, 49, 74, 107	0
1	B	554/579 (95%)	0.37	28 (5%) 28 33	19, 39, 74, 97	0
All	All	1092/1158 (94%)	0.49	64 (5%) 22 27	19, 45, 74, 107	0

All (64) RSRZ outliers are listed below:

Mol	Chain	Res	Type	RSRZ
1	A	366	LEU	9.2
1	B	200	VAL	6.4
1	A	370	ALA	6.0
1	B	121	SER	5.2
1	A	367	ASN	5.0
1	B	5	TYR	4.8
1	B	196	ALA	4.6
1	B	-4	PRO	4.6
1	B	203	LEU	4.4
1	B	364	ALA	4.4
1	B	1	MET	4.2
1	A	368	GLN	4.2
1	B	119	HIS	4.2
1	B	-1	SER	4.1
1	B	6	PRO	4.0
1	A	205	ALA	3.9
1	A	6	PRO	3.9
1	B	2	ASP	3.8
1	B	206	GLN	3.8
1	B	120	GLN	3.6
1	B	118	VAL	3.4
1	A	509	GLY	3.4
1	A	11	ALA	3.3
1	A	178	GLY	3.2

*Continued on next page...*

*Continued from previous page...*

<b>Mol</b>	<b>Chain</b>	<b>Res</b>	<b>Type</b>	<b>RSRZ</b>
1	A	517	SER	3.2
1	B	300	LEU	3.2
1	B	274	LEU	3.1
1	B	295	SER	3.1
1	A	9	GLN	3.1
1	A	174	GLY	3.1
1	A	274	LEU	3.0
1	A	337	HIS	3.0
1	A	335	ILE	2.9
1	A	516	GLU	2.9
1	B	4	GLN	2.9
1	A	7	VAL	2.8
1	A	176	VAL	2.8
1	A	364	ALA	2.8
1	A	92	MET	2.8
1	A	515	VAL	2.8
1	A	363	GLY	2.7
1	A	524	THR	2.7
1	A	488	TYR	2.7
1	A	45	LEU	2.7
1	A	175	PRO	2.7
1	A	538	ALA	2.6
1	B	526	ARG	2.5
1	A	180	VAL	2.5
1	A	340	VAL	2.4
1	A	491	LEU	2.4
1	B	3	LYS	2.4
1	A	521	LEU	2.3
1	B	199	GLN	2.3
1	A	203	LEU	2.3
1	B	202	LYS	2.2
1	B	374	LEU	2.2
1	B	297	ASN	2.2
1	A	362	ARG	2.1
1	B	208	LYS	2.1
1	B	-2	GLY	2.1
1	B	7	VAL	2.1
1	A	373	PRO	2.1
1	A	297	ASN	2.0
1	A	8	ARG	2.0

## 6.2 Non-standard residues in protein, DNA, RNA chains [i](#)

There are no non-standard protein/DNA/RNA residues in this entry.

## 6.3 Carbohydrates [i](#)

There are no monosaccharides in this entry.

## 6.4 Ligands [i](#)

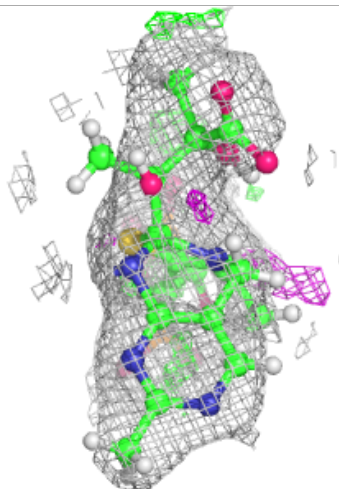
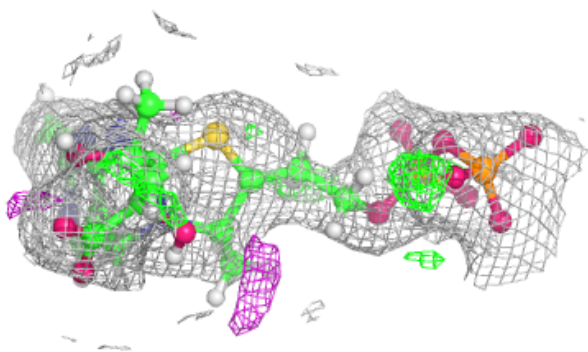
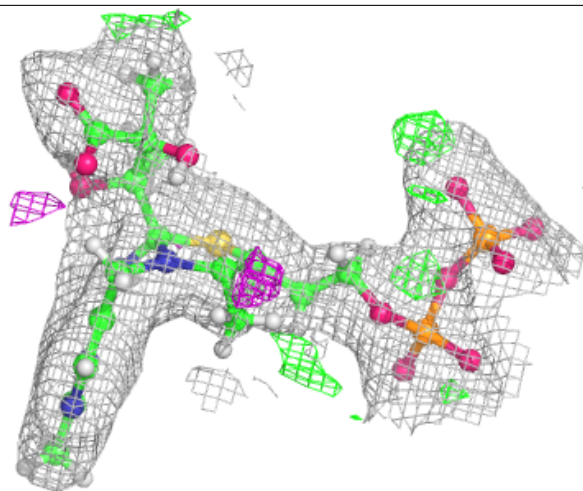
In the following table, the Atoms column lists the number of modelled atoms in the group and the number defined in the chemical component dictionary. The B-factors column lists the minimum, median, 95<sup>th</sup> percentile and maximum values of B factors of atoms in the group. The column labelled 'Q< 0.9' lists the number of atoms with occupancy less than 0.9.

Mol	Type	Chain	Res	Atoms	RSCC	RSR	B-factors( $\text{\AA}^2$ )	Q<0.9
5	PYR	B	606	6/6	0.83	0.42	48,76,100,134	0
5	PYR	A	606	6/6	0.85	0.25	41,79,96,96	0
2	MG	A	601	1/1	0.95	0.08	44,44,44,44	0
2	MG	B	602	1/1	0.95	0.24	46,46,46,46	0
2	MG	A	603	1/1	0.96	0.17	43,43,43,43	0
4	A4Y	A	605	35/35	0.96	0.16	20,45,167,225	0
4	A4Y	B	605	35/35	0.97	0.15	15,31,151,193	0
2	MG	A	602	1/1	0.97	0.14	49,49,49,49	0
2	MG	B	601	1/1	0.97	0.10	27,27,27,27	0
2	MG	B	603	1/1	0.98	0.07	54,54,54,54	0
3	PO4	A	604	5/5	0.99	0.13	49,49,49,50	0
3	PO4	B	604	5/5	0.99	0.10	46,46,48,48	0

The following is a graphical depiction of the model fit to experimental electron density of all instances of the Ligand of Interest. In addition, ligands with molecular weight > 250 and outliers as shown on the geometry validation Tables will also be included. Each fit is shown from different orientation to approximate a three-dimensional view.

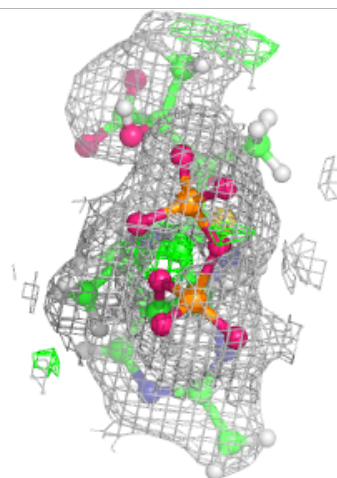
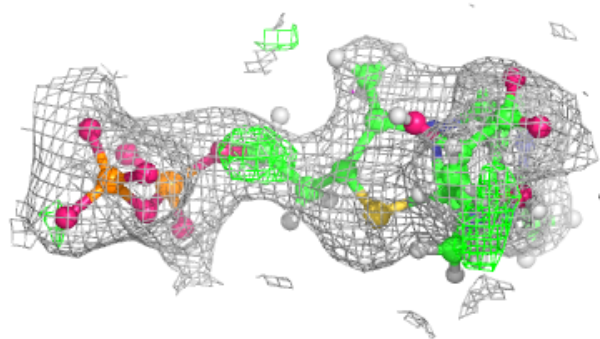
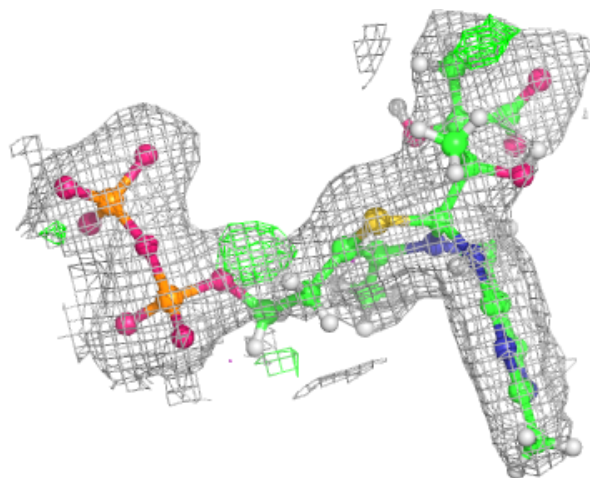
**Electron density around A4Y A 605:**

$2mF_o-DF_c$  (at 0.7 rmsd) in gray  
 $mF_o-DF_c$  (at 3 rmsd) in purple (negative)  
and green (positive)



**Electron density around A4Y B 605:**

$2mF_o-DF_c$  (at 0.7 rmsd) in gray  
 $mF_o-DF_c$  (at 3 rmsd) in purple (negative)  
and green (positive)



## 6.5 Other polymers [i](#)

There are no such residues in this entry.