



Full wwPDB X-ray Structure Validation Report ⓘ

Jan 18, 2024 – 12:13 AM JST

PDB ID : 8WAA
Title : Human transketolase soaked with donor ketose D-xylulose
Authors : Liu, Z.; Dai, S.; Tittmann, K.
Deposited on : 2023-09-07
Resolution : 1.50 Å(reported)

This is a Full wwPDB X-ray Structure Validation Report for a publicly released PDB entry.

We welcome your comments at validation@mail.wwpdb.org

A user guide is available at

<https://www.wwpdb.org/validation/2017/XrayValidationReportHelp>

with specific help available everywhere you see the ⓘ symbol.

The types of validation reports are described at

<http://www.wwpdb.org/validation/2017/FAQs#types>.

The following versions of software and data (see [references ⓘ](#)) were used in the production of this report:

MolProbity : 4.02b-467
Mogul : 1.8.5 (274361), CSD as541be (2020)
Xtriage (Phenix) : 1.13
EDS : 2.36
buster-report : 1.1.7 (2018)
Percentile statistics : 20191225.v01 (using entries in the PDB archive December 25th 2019)
Refmac : 5.8.0158
CCP4 : 7.0.044 (Gargrove)
Ideal geometry (proteins) : Engh & Huber (2001)
Ideal geometry (DNA, RNA) : Parkinson et al. (1996)
Validation Pipeline (wwPDB-VP) : 2.36

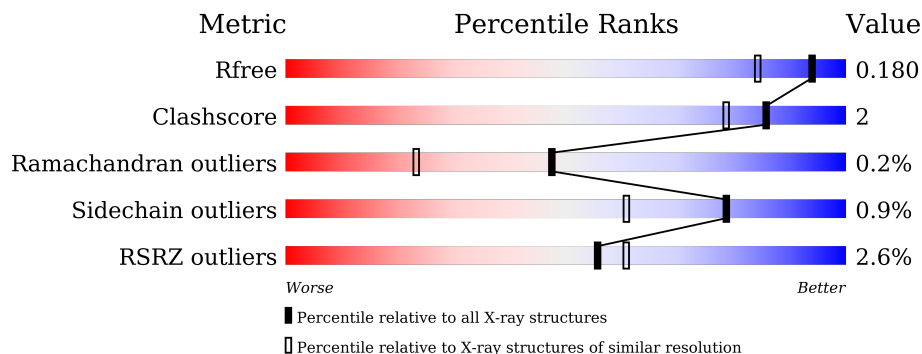
1 Overall quality at a glance

The following experimental techniques were used to determine the structure:

X-RAY DIFFRACTION

The reported resolution of this entry is 1.50 Å.

Percentile scores (ranging between 0-100) for global validation metrics of the entry are shown in the following graphic. The table shows the number of entries on which the scores are based.



Metric	Whole archive (#Entries)	Similar resolution (#Entries, resolution range(Å))
R_{free}	130704	2936 (1.50-1.50)
Clashscore	141614	3144 (1.50-1.50)
Ramachandran outliers	138981	3066 (1.50-1.50)
Sidechain outliers	138945	3064 (1.50-1.50)
RSRZ outliers	127900	2884 (1.50-1.50)

The table below summarises the geometric issues observed across the polymeric chains and their fit to the electron density. The red, orange, yellow and green segments of the lower bar indicate the fraction of residues that contain outliers for ≥ 3 , 2, 1 and 0 types of geometric quality criteria respectively. A grey segment represents the fraction of residues that are not modelled. The numeric value for each fraction is indicated below the corresponding segment, with a dot representing fractions $\leq 5\%$. The upper red bar (where present) indicates the fraction of residues that have poor fit to the electron density. The numeric value is given above the bar.

Mol	Chain	Length	Quality of chain
1	A	637	
1	B	637	

2 Entry composition i

There are 6 unique types of molecules in this entry. The entry contains 11276 atoms, of which 0 are hydrogens and 0 are deuteriums.

In the tables below, the ZeroOcc column contains the number of atoms modelled with zero occupancy, the AltConf column contains the number of residues with at least one atom in alternate conformation and the Trace column contains the number of residues modelled with at most 2 atoms.

- Molecule 1 is a protein called Transketolase.

Mol	Chain	Residues	Atoms					ZeroOcc	AltConf	Trace
			Total	C	N	O	S			
1	A	620	4922	3102	862	932	26	0	24	0
1	B	620	4984	3141	877	939	27	0	30	0

There are 28 discrepancies between the modelled and reference sequences:

Chain	Residue	Modelled	Actual	Comment	Reference
A	624	LEU	-	expression tag	UNP P29401
A	625	VAL	-	expression tag	UNP P29401
A	626	PRO	-	expression tag	UNP P29401
A	627	ARG	-	expression tag	UNP P29401
A	628	GLY	-	expression tag	UNP P29401
A	629	SER	-	expression tag	UNP P29401
A	630	LEU	-	expression tag	UNP P29401
A	631	GLU	-	expression tag	UNP P29401
A	632	HIS	-	expression tag	UNP P29401
A	633	HIS	-	expression tag	UNP P29401
A	634	HIS	-	expression tag	UNP P29401
A	635	HIS	-	expression tag	UNP P29401
A	636	HIS	-	expression tag	UNP P29401
A	637	HIS	-	expression tag	UNP P29401
B	624	LEU	-	expression tag	UNP P29401
B	625	VAL	-	expression tag	UNP P29401
B	626	PRO	-	expression tag	UNP P29401
B	627	ARG	-	expression tag	UNP P29401
B	628	GLY	-	expression tag	UNP P29401
B	629	SER	-	expression tag	UNP P29401
B	630	LEU	-	expression tag	UNP P29401
B	631	GLU	-	expression tag	UNP P29401
B	632	HIS	-	expression tag	UNP P29401
B	633	HIS	-	expression tag	UNP P29401
B	634	HIS	-	expression tag	UNP P29401

Continued on next page...

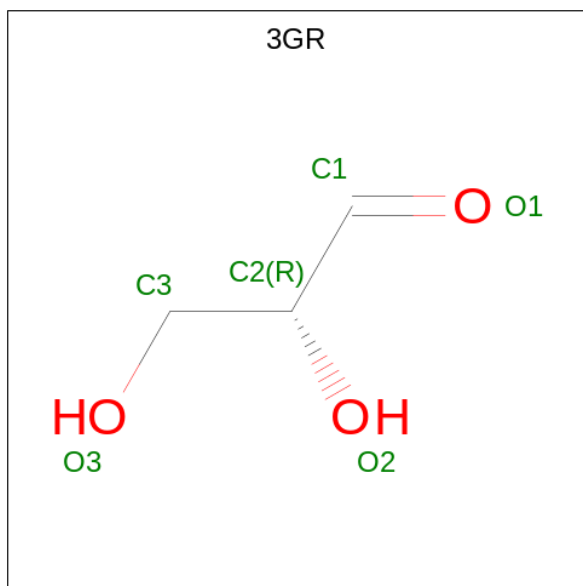
Continued from previous page...

Chain	Residue	Modelled	Actual	Comment	Reference
B	635	HIS	-	expression tag	UNP P29401
B	636	HIS	-	expression tag	UNP P29401
B	637	HIS	-	expression tag	UNP P29401

- Molecule 2 is CALCIUM ION (three-letter code: CA) (formula: Ca).

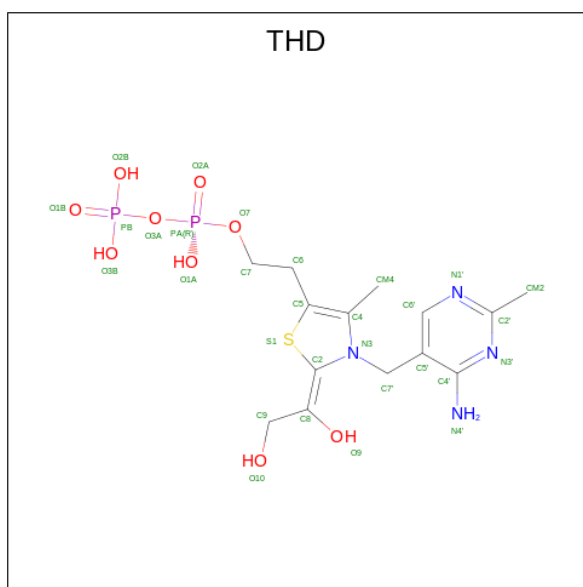
Mol	Chain	Residues	Atoms	ZeroOcc	AltConf
2	A	1	Total Ca 1 1	0	0
2	B	1	Total Ca 1 1	0	0

- Molecule 3 is D-Glyceraldehyde (three-letter code: 3GR) (formula: C₃H₆O₃) (labeled as "Ligand of Interest" by depositor).



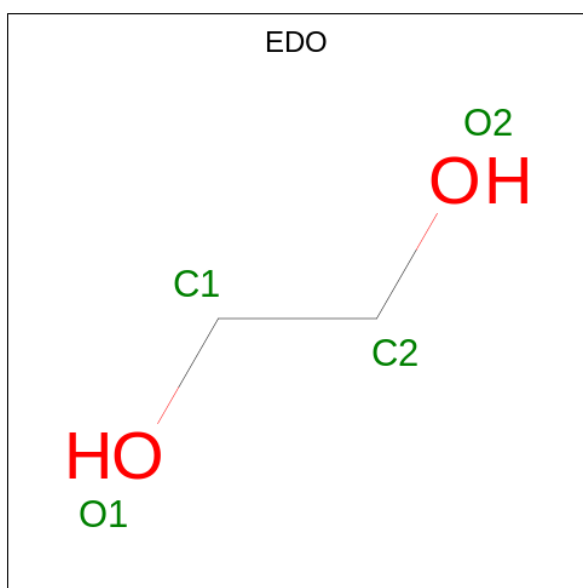
Mol	Chain	Residues	Atoms	ZeroOcc	AltConf
3	A	1	Total C O 6 3 3	0	0
3	B	1	Total C O 6 3 3	0	0

- Molecule 4 is 2-[3-[(4-AMINO-2-METHYL-5-PYRIMIDINYL)METHYL]-2-(1,2-DIHYDROXYETHYL)-4-METHYL-1,3-THIAZOL-3-IUM-5-YL]ETHYL TRIHYDROGEN DIPHOSPHATE (three-letter code: THD) (formula: C₁₄H₂₂N₄O₉P₂S) (labeled as "Ligand of Interest" by depositor).



Mol	Chain	Residues	Atoms					ZeroOcc	AltConf	
			Total	C	N	O	P			S
4	A	1	30	14	4	9	2	1	0	0
4	B	1	30	14	4	9	2	1	0	0

- Molecule 5 is 1,2-ETHANEDIOL (three-letter code: EDO) (formula: C₂H₆O₂).



Mol	Chain	Residues	Atoms		ZeroOcc	AltConf
			Total	C O		
5	A	1	4	2 2	0	0
5	A	1	4	2 2	0	0

Continued on next page...

Continued from previous page...

Mol	Chain	Residues	Atoms	ZeroOcc	AltConf
5	A	1	Total C O 4 2 2	0	0
5	A	1	Total C O 4 2 2	0	0
5	A	1	Total C O 4 2 2	0	0
5	A	1	Total C O 4 2 2	0	0
5	A	1	Total C O 4 2 2	0	0
5	A	1	Total C O 4 2 2	0	0
5	A	1	Total C O 4 2 2	0	0
5	A	1	Total C O 4 2 2	0	0
5	A	1	Total C O 4 2 2	0	0
5	B	1	Total C O 4 2 2	0	0
5	B	1	Total C O 4 2 2	0	0
5	B	1	Total C O 4 2 2	0	0
5	B	1	Total C O 4 2 2	0	0
5	B	1	Total C O 4 2 2	0	0
5	B	1	Total C O 4 2 2	0	0
5	B	1	Total C O 4 2 2	0	0
5	B	1	Total C O 4 2 2	0	0
5	B	1	Total C O 4 2 2	0	0
5	B	1	Total C O 4 2 2	0	0
5	B	1	Total C O 4 2 2	0	0
5	B	1	Total C O 4 2 2	0	0
5	B	1	Total C O 4 2 2	0	0
5	B	1	Total C O 4 2 2	0	0

Continued on next page...

Continued from previous page...

Mol	Chain	Residues	Atoms			ZeroOcc	AltConf
5	B	1	Total	C	O	0	0
			4	2	2		
5	B	1	Total	C	O	0	0
			4	2	2		

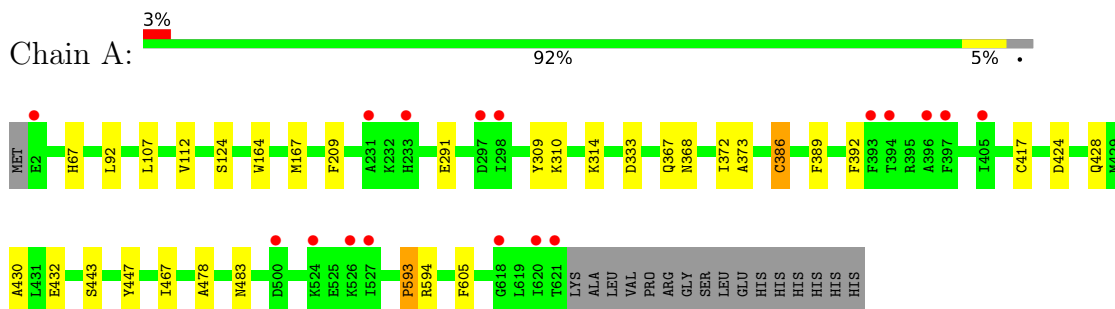
- Molecule 6 is water.

Mol	Chain	Residues	Atoms		ZeroOcc	AltConf
6	A	584	Total	O	0	0
			584	584		
6	B	612	Total	O	0	0
			612	612		

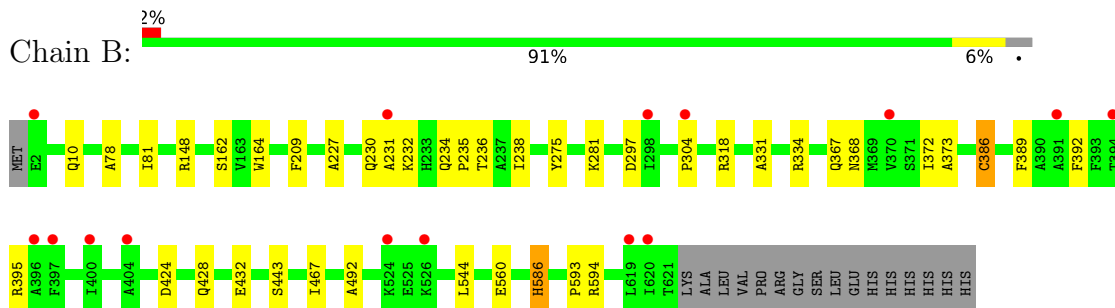
3 Residue-property plots

These plots are drawn for all protein, RNA, DNA and oligosaccharide chains in the entry. The first graphic for a chain summarises the proportions of the various outlier classes displayed in the second graphic. The second graphic shows the sequence view annotated by issues in geometry and electron density. Residues are color-coded according to the number of geometric quality criteria for which they contain at least one outlier: green = 0, yellow = 1, orange = 2 and red = 3 or more. A red dot above a residue indicates a poor fit to the electron density ($RSRZ > 2$). Stretches of 2 or more consecutive residues without any outlier are shown as a green connector. Residues present in the sample, but not in the model, are shown in grey.

- Molecule 1: Transketolase



- Molecule 1: Transketolase



4 Data and refinement statistics

Property	Value	Source
Space group	P 1 21 1	Depositor
Cell constants a, b, c, α , β , γ	73.50Å 86.55Å 92.70Å 90.00° 93.85° 90.00°	Depositor
Resolution (Å)	46.25 – 1.50 46.82 – 1.50	Depositor EDS
% Data completeness (in resolution range)	98.8 (46.25-1.50) 98.9 (46.82-1.50)	Depositor EDS
R_{merge}	(Not available)	Depositor
R_{sym}	(Not available)	Depositor
$\langle I/\sigma(I) \rangle$ ¹	2.14 (at 1.50Å)	Xtrriage
Refinement program	PHENIX 1.19.2_4158	Depositor
R, R_{free}	0.157 , 0.180 0.156 , 0.180	Depositor DCC
R_{free} test set	9143 reflections (5.00%)	wwPDB-VP
Wilson B-factor (Å ²)	19.1	Xtrriage
Anisotropy	0.256	Xtrriage
Bulk solvent k_{sol} (e/Å ³), B_{sol} (Å ²)	0.35 , 47.4	EDS
L-test for twinning ²	$\langle L \rangle = 0.49$, $\langle L^2 \rangle = 0.33$	Xtrriage
Estimated twinning fraction	No twinning to report.	Xtrriage
F_o, F_c correlation	0.98	EDS
Total number of atoms	11276	wwPDB-VP
Average B, all atoms (Å ²)	23.0	wwPDB-VP

Xtrriage's analysis on translational NCS is as follows: *The analyses of the Patterson function reveals a significant off-origin peak that is 79.65 % of the origin peak, indicating pseudo-translational symmetry. The chance of finding a peak of this or larger height randomly in a structure without pseudo-translational symmetry is equal to 5.3225e-07. The detected translational NCS is most likely also responsible for the elevated intensity ratio.*

¹Intensities estimated from amplitudes.

²Theoretical values of $\langle |L| \rangle$, $\langle L^2 \rangle$ for acentric reflections are 0.5, 0.333 respectively for untwinned datasets, and 0.375, 0.2 for perfectly twinned datasets.

5 Model quality [i](#)

5.1 Standard geometry [i](#)

Bond lengths and bond angles in the following residue types are not validated in this section: THD, CA, 3GR, EDO

The Z score for a bond length (or angle) is the number of standard deviations the observed value is removed from the expected value. A bond length (or angle) with $|Z| > 5$ is considered an outlier worth inspection. RMSZ is the root-mean-square of all Z scores of the bond lengths (or angles).

Mol	Chain	Bond lengths		Bond angles	
		RMSZ	# Z >5	RMSZ	# Z >5
1	A	0.34	2/5029 (0.0%)	0.58	0/6802
1	B	0.34	2/5093 (0.0%)	0.59	0/6885
All	All	0.34	4/10122 (0.0%)	0.59	0/13687

Chiral center outliers are detected by calculating the chiral volume of a chiral center and verifying if the center is modelled as a planar moiety or with the opposite hand. A planarity outlier is detected by checking planarity of atoms in a peptide group, atoms in a mainchain group or atoms of a sidechain that are expected to be planar.

Mol	Chain	#Chirality outliers	#Planarity outliers
1	B	0	1

All (4) bond length outliers are listed below:

Mol	Chain	Res	Type	Atoms	Z	Observed(Å)	Ideal(Å)
1	B	386[A]	CYS	CB-SG	-5.33	1.73	1.81
1	B	386[B]	CYS	CB-SG	-5.33	1.73	1.81
1	A	386[A]	CYS	CB-SG	-5.05	1.73	1.81
1	A	386[B]	CYS	CB-SG	-5.05	1.73	1.81

There are no bond angle outliers.

There are no chirality outliers.

All (1) planarity outliers are listed below:

Mol	Chain	Res	Type	Group
1	B	230	GLN	Peptide

5.2 Too-close contacts

In the following table, the Non-H and H(model) columns list the number of non-hydrogen atoms and hydrogen atoms in the chain respectively. The H(added) column lists the number of hydrogen atoms added and optimized by MolProbity. The Clashes column lists the number of clashes within the asymmetric unit, whereas Symm-Clashes lists symmetry-related clashes.

Mol	Chain	Non-H	H(model)	H(added)	Clashes	Symm-Clashes
1	A	4922	0	4924	16	0
1	B	4984	0	4988	24	0
2	A	1	0	0	0	0
2	B	1	0	0	0	0
3	A	6	0	5	0	0
3	B	6	0	5	1	0
4	A	30	0	19	4	0
4	B	30	0	18	2	0
5	A	44	0	66	2	0
5	B	56	0	84	2	0
6	A	584	0	0	1	0
6	B	612	0	0	2	0
All	All	11276	0	10109	44	0

The all-atom clashscore is defined as the number of clashes found per 1000 atoms (including hydrogen atoms). The all-atom clashscore for this structure is 2.

All (44) close contacts within the same asymmetric unit are listed below, sorted by their clash magnitude.

Atom-1	Atom-2	Interatomic distance (Å)	Clash overlap (Å)
4:A:703:THD:O10	4:A:703:THD:C9	1.67	1.39
1:A:367[B]:GLN:NE2	6:A:801:HOH:O	1.85	1.08
1:B:367[A]:GLN:NE2	6:B:801:HOH:O	1.86	1.05
1:B:148:ARG:HH22	1:B:232[B]:LYS:HG3	1.44	0.82
5:A:709:EDO:H11	1:B:209:PHE:HE2	1.48	0.77
1:A:209:PHE:HE2	5:B:710:EDO:H22	1.54	0.72
1:B:275[A]:TYR:OH	1:B:281:LYS:NZ	2.26	0.69
1:B:297:ASP:O	1:B:334[A]:ARG:NH1	2.33	0.62
1:B:424:ASP:HB3	1:B:428:GLN:HG3	1.88	0.55
1:A:373:ALA:HB2	1:A:386[A]:CYS:SG	2.46	0.55
4:A:703:THD:C9	4:A:703:THD:H10	2.11	0.53
1:A:164:TRP:HA	1:A:167[B]:MET:HG3	1.90	0.53
1:B:234[B]:GLN:HB2	1:B:235:PRO:HD2	1.92	0.51
1:A:424:ASP:HB3	1:A:428:GLN:HG3	1.93	0.51
1:B:373:ALA:HB2	1:B:386[A]:CYS:SG	2.52	0.50

Continued on next page...

Continued from previous page...

Atom-1	Atom-2	Interatomic distance (Å)	Clash overlap (Å)
1:B:10[B]:GLN:OE1	6:B:802:HOH:O	2.17	0.50
1:B:162:SER:HB3	1:B:367[B]:GLN:HE21	1.77	0.50
1:B:318:ARG:HH22	3:B:702:3GR:H1C2	1.78	0.49
1:B:232[B]:LYS:HD2	1:B:236:THR:OG1	2.13	0.48
4:A:703:THD:O10	4:A:703:THD:C8	2.51	0.48
4:B:703:THD:C8	4:B:703:THD:H4'2	2.27	0.47
1:A:443:SER:HA	1:A:467:ILE:O	2.14	0.47
1:A:124:SER:OG	1:B:395[A]:ARG:NH2	2.40	0.46
1:A:428:GLN:NE2	4:B:703:THD:O9	2.48	0.46
1:B:443:SER:HA	1:B:467:ILE:O	2.15	0.46
1:B:227:ALA:HB1	1:B:238:ILE:HD12	1.99	0.45
1:B:560:GLU:OE2	1:B:586[A]:HIS:HE1	2.00	0.45
5:A:709:EDO:H11	1:B:209:PHE:CE2	2.40	0.45
4:A:703:THD:C8	4:A:703:THD:H4'2	2.29	0.44
1:B:304:PRO:HD3	1:B:331:ALA:HB2	2.00	0.44
1:B:368:ASN:O	1:B:372:ILE:HG12	2.18	0.44
1:A:309:TYR:O	1:A:483:ASN:ND2	2.43	0.43
1:A:92[A]:LEU:HD21	1:A:107:LEU:HD11	1.99	0.42
1:B:164:TRP:CD1	5:B:710:EDO:H21	2.54	0.42
1:A:67:HIS:CG	1:A:291:GLU:HA	2.54	0.42
1:B:492:ALA:HB3	1:B:544:LEU:HD23	2.02	0.42
1:A:593:PRO:HA	1:A:605:PHE:CZ	2.54	0.42
1:A:314:LYS:HD3	1:A:478:ALA:HA	2.00	0.42
1:B:78:ALA:O	1:B:81:ILE:HG22	2.20	0.42
1:A:368:ASN:O	1:A:372:ILE:HG12	2.20	0.41
1:A:389:PHE:HB2	1:A:392:PHE:CD2	2.55	0.41
1:B:389:PHE:HB2	1:B:392:PHE:CD2	2.56	0.41
1:A:417:CYS:HA	1:A:430:ALA:HB3	2.03	0.41
1:B:560:GLU:OE2	1:B:586[A]:HIS:CE1	2.73	0.40

There are no symmetry-related clashes.

5.3 Torsion angles [i](#)

5.3.1 Protein backbone [i](#)

In the following table, the Percentiles column shows the percent Ramachandran outliers of the chain as a percentile score with respect to all X-ray entries followed by that with respect to entries of similar resolution.

The Analysed column shows the number of residues for which the backbone conformation was analysed, and the total number of residues.

Mol	Chain	Analysed	Favoured	Allowed	Outliers	Percentiles	
1	A	642/637 (101%)	627 (98%)	14 (2%)	1 (0%)	47	23
1	B	648/637 (102%)	629 (97%)	16 (2%)	3 (0%)	29	9
All	All	1290/1274 (101%)	1256 (97%)	30 (2%)	4 (0%)	47	18

All (4) Ramachandran outliers are listed below:

Mol	Chain	Res	Type
1	B	231[A]	ALA
1	B	231[B]	ALA
1	B	593	PRO
1	A	593	PRO

5.3.2 Protein sidechains [i](#)

In the following table, the Percentiles column shows the percent sidechain outliers of the chain as a percentile score with respect to all X-ray entries followed by that with respect to entries of similar resolution.

The Analysed column shows the number of residues for which the sidechain conformation was analysed, and the total number of residues.

Mol	Chain	Analysed	Rotameric	Outliers	Percentiles	
1	A	526/518 (102%)	520 (99%)	6 (1%)	73	53
1	B	532/518 (103%)	528 (99%)	4 (1%)	81	66
All	All	1058/1036 (102%)	1048 (99%)	10 (1%)	78	61

All (10) residues with a non-rotameric sidechain are listed below:

Mol	Chain	Res	Type
1	A	112	VAL
1	A	310	LYS
1	A	333	ASP
1	A	432	GLU
1	A	447	TYR
1	A	594	ARG
1	B	432	GLU
1	B	586[A]	HIS
1	B	586[B]	HIS
1	B	594	ARG

Sometimes sidechains can be flipped to improve hydrogen bonding and reduce clashes. There are

no such sidechains identified.

5.3.3 RNA [i](#)

There are no RNA molecules in this entry.

5.4 Non-standard residues in protein, DNA, RNA chains [i](#)

There are no non-standard protein/DNA/RNA residues in this entry.

5.5 Carbohydrates [i](#)

There are no monosaccharides in this entry.

5.6 Ligand geometry [i](#)

Of 31 ligands modelled in this entry, 2 are monoatomic - leaving 29 for Mogul analysis.

In the following table, the Counts columns list the number of bonds (or angles) for which Mogul statistics could be retrieved, the number of bonds (or angles) that are observed in the model and the number of bonds (or angles) that are defined in the Chemical Component Dictionary. The Link column lists molecule types, if any, to which the group is linked. The Z score for a bond length (or angle) is the number of standard deviations the observed value is removed from the expected value. A bond length (or angle) with $|Z| > 2$ is considered an outlier worth inspection. RMSZ is the root-mean-square of all Z scores of the bond lengths (or angles).

Mol	Type	Chain	Res	Link	Bond lengths			Bond angles		
					Counts	RMSZ	# Z > 2	Counts	RMSZ	# Z > 2
5	EDO	A	710	-	3,3,3	0.46	0	2,2,2	0.22	0
5	EDO	B	709	-	3,3,3	0.55	0	2,2,2	0.35	0
5	EDO	B	713	-	3,3,3	0.52	0	2,2,2	0.31	0
5	EDO	B	708	-	3,3,3	0.47	0	2,2,2	0.41	0
5	EDO	A	711	-	3,3,3	0.52	0	2,2,2	0.14	0
5	EDO	B	715	-	3,3,3	0.46	0	2,2,2	0.44	0
5	EDO	A	705	-	3,3,3	0.49	0	2,2,2	0.15	0
5	EDO	B	712	-	3,3,3	0.56	0	2,2,2	0.09	0
5	EDO	A	712	-	3,3,3	0.47	0	2,2,2	0.49	0
5	EDO	A	709	-	3,3,3	0.50	0	2,2,2	0.23	0
5	EDO	B	714	-	3,3,3	0.54	0	2,2,2	0.13	0
5	EDO	A	714	-	3,3,3	0.50	0	2,2,2	0.24	0
5	EDO	B	717	-	3,3,3	0.45	0	2,2,2	0.38	0
4	THD	B	703	2	28,31,31	3.22	11 (39%)	32,46,46	3.25	12 (37%)
5	EDO	A	707	-	3,3,3	0.56	0	2,2,2	0.38	0

Mol	Type	Chain	Res	Link	Bond lengths			Bond angles		
					Counts	RMSZ	# Z > 2	Counts	RMSZ	# Z > 2
3	3GR	A	702	-	4,5,5	0.66	0	4,5,5	0.48	0
4	THD	A	703	2	28,31,31	1.98	5 (17%)	32,46,46	2.34	11 (34%)
5	EDO	B	706	-	3,3,3	0.45	0	2,2,2	0.29	0
5	EDO	B	707	-	3,3,3	0.63	0	2,2,2	0.45	0
5	EDO	B	704	-	3,3,3	0.50	0	2,2,2	0.53	0
5	EDO	A	704	-	3,3,3	0.50	0	2,2,2	0.46	0
5	EDO	B	716	-	3,3,3	0.47	0	2,2,2	0.22	0
5	EDO	A	706	-	3,3,3	0.46	0	2,2,2	0.28	0
3	3GR	B	702	-	4,5,5	0.59	0	4,5,5	1.34	1 (25%)
5	EDO	B	710	-	3,3,3	0.39	0	2,2,2	0.05	0
5	EDO	A	708	-	3,3,3	0.43	0	2,2,2	0.51	0
5	EDO	A	713	-	3,3,3	0.57	0	2,2,2	0.11	0
5	EDO	B	705	-	3,3,3	0.51	0	2,2,2	0.10	0
5	EDO	B	711	-	3,3,3	0.38	0	2,2,2	0.42	0

In the following table, the Chirals column lists the number of chiral outliers, the number of chiral centers analysed, the number of these observed in the model and the number defined in the Chemical Component Dictionary. Similar counts are reported in the Torsion and Rings columns. '-' means no outliers of that kind were identified.

Mol	Type	Chain	Res	Link	Chirals	Torsions	Rings
5	EDO	A	710	-	-	0/1/1/1	-
5	EDO	B	709	-	-	0/1/1/1	-
5	EDO	B	713	-	-	1/1/1/1	-
5	EDO	B	708	-	-	0/1/1/1	-
5	EDO	A	711	-	-	0/1/1/1	-
5	EDO	B	715	-	-	0/1/1/1	-
5	EDO	A	705	-	-	0/1/1/1	-
5	EDO	B	712	-	-	1/1/1/1	-
5	EDO	A	712	-	-	0/1/1/1	-
5	EDO	A	709	-	-	1/1/1/1	-
5	EDO	B	714	-	-	0/1/1/1	-
5	EDO	A	714	-	-	1/1/1/1	-
5	EDO	B	717	-	-	0/1/1/1	-
4	THD	B	703	2	-	2/17/23/23	0/2/2/2
5	EDO	A	707	-	-	0/1/1/1	-
3	3GR	A	702	-	-	2/3/4/4	-
4	THD	A	703	2	-	1/17/23/23	0/2/2/2
5	EDO	B	706	-	-	0/1/1/1	-
5	EDO	B	707	-	-	0/1/1/1	-
5	EDO	B	704	-	-	0/1/1/1	-
5	EDO	A	704	-	-	0/1/1/1	-

Continued on next page...

Continued from previous page...

Mol	Type	Chain	Res	Link	Chirals	Torsions	Rings
5	EDO	B	716	-	-	0/1/1/1	-
5	EDO	A	706	-	-	0/1/1/1	-
3	3GR	B	702	-	-	2/3/4/4	-
5	EDO	B	710	-	-	1/1/1/1	-
5	EDO	A	708	-	-	0/1/1/1	-
5	EDO	A	713	-	-	0/1/1/1	-
5	EDO	B	705	-	-	1/1/1/1	-
5	EDO	B	711	-	-	0/1/1/1	-

All (16) bond length outliers are listed below:

Mol	Chain	Res	Type	Atoms	Z	Observed(Å)	Ideal(Å)
4	B	703	THD	C2-S1	8.14	1.90	1.74
4	A	703	THD	O10-C9	7.47	1.67	1.41
4	B	703	THD	C9-C8	6.62	1.65	1.50
4	B	703	THD	C6'-N1'	6.07	1.47	1.34
4	B	703	THD	C6-C5	-5.90	1.39	1.50
4	B	703	THD	O10-C9	4.95	1.58	1.41
4	B	703	THD	C5-S1	4.58	1.83	1.74
4	B	703	THD	C2'-N3'	-3.91	1.27	1.34
4	B	703	THD	C5'-C4'	-3.01	1.37	1.42
4	A	703	THD	C5-C4	2.84	1.41	1.35
4	A	703	THD	O9-C8	2.78	1.39	1.32
4	B	703	THD	C2'-N1'	2.67	1.38	1.34
4	A	703	THD	C2'-N3'	-2.54	1.29	1.34
4	B	703	THD	C4-N3	2.34	1.42	1.39
4	B	703	THD	O9-C8	-2.21	1.27	1.32
4	A	703	THD	C6-C5	2.00	1.54	1.50

All (24) bond angle outliers are listed below:

Mol	Chain	Res	Type	Atoms	Z	Observed(°)	Ideal(°)
4	B	703	THD	C7'-C5'-C4'	7.56	130.22	122.56
4	B	703	THD	N4'-C4'-N3'	-6.94	107.22	117.03
4	B	703	THD	C7'-C5'-C6'	-6.93	111.37	121.30
4	B	703	THD	CM4-C4-N3	-6.18	112.90	122.25
4	A	703	THD	N4'-C4'-N3'	-5.99	108.57	117.03
4	B	703	THD	C5'-C6'-N1'	-5.93	113.94	123.82
4	B	703	THD	C4-C5-S1	-5.71	105.48	110.59
4	A	703	THD	C7'-C5'-C4'	4.86	127.48	122.56
4	A	703	THD	C5'-C6'-N1'	-4.20	116.82	123.82
4	A	703	THD	C5'-C4'-N3'	3.93	127.42	121.24

Continued on next page...

Continued from previous page...

Mol	Chain	Res	Type	Atoms	Z	Observed(°)	Ideal(°)
4	B	703	THD	C5'-C4'-N3'	3.73	127.11	121.24
4	A	703	THD	C2'-N3'-C4'	-3.68	112.34	118.08
4	A	703	THD	C7'-N3-C4	-3.38	120.76	125.01
4	A	703	THD	C7'-C5'-C6'	-3.33	116.53	121.30
4	B	703	THD	CM2-C2'-N3'	3.28	122.27	117.15
4	B	703	THD	C6'-N1'-C2'	2.91	120.91	115.96
4	B	703	THD	CM2-C2'-N1'	-2.84	114.01	117.14
4	A	703	THD	C6'-N1'-C2'	2.83	120.77	115.96
4	A	703	THD	C6-C5-S1	2.72	125.05	119.20
4	B	703	THD	C5'-C7'-N3	-2.49	109.97	113.13
4	B	703	THD	C5'-C4'-N4'	2.32	125.47	122.19
3	B	702	3GR	O3-C3-C2	-2.23	109.15	112.40
4	A	703	THD	CM2-C2'-N1'	-2.18	114.73	117.14
4	A	703	THD	O3B-PB-O2B	2.14	115.80	107.64

There are no chirality outliers.

All (13) torsion outliers are listed below:

Mol	Chain	Res	Type	Atoms
3	A	702	3GR	O2-C2-C3-O3
3	A	702	3GR	C1-C2-C3-O3
4	B	703	THD	PA-O3A-PB-O3B
5	B	705	EDO	O1-C1-C2-O2
5	B	713	EDO	O1-C1-C2-O2
4	A	703	THD	PA-O3A-PB-O3B
3	B	702	3GR	O2-C2-C3-O3
3	B	702	3GR	C1-C2-C3-O3
5	A	709	EDO	O1-C1-C2-O2
5	A	714	EDO	O1-C1-C2-O2
4	B	703	THD	PA-O3A-PB-O1B
5	B	712	EDO	O1-C1-C2-O2
5	B	710	EDO	O1-C1-C2-O2

There are no ring outliers.

5 monomers are involved in 11 short contacts:

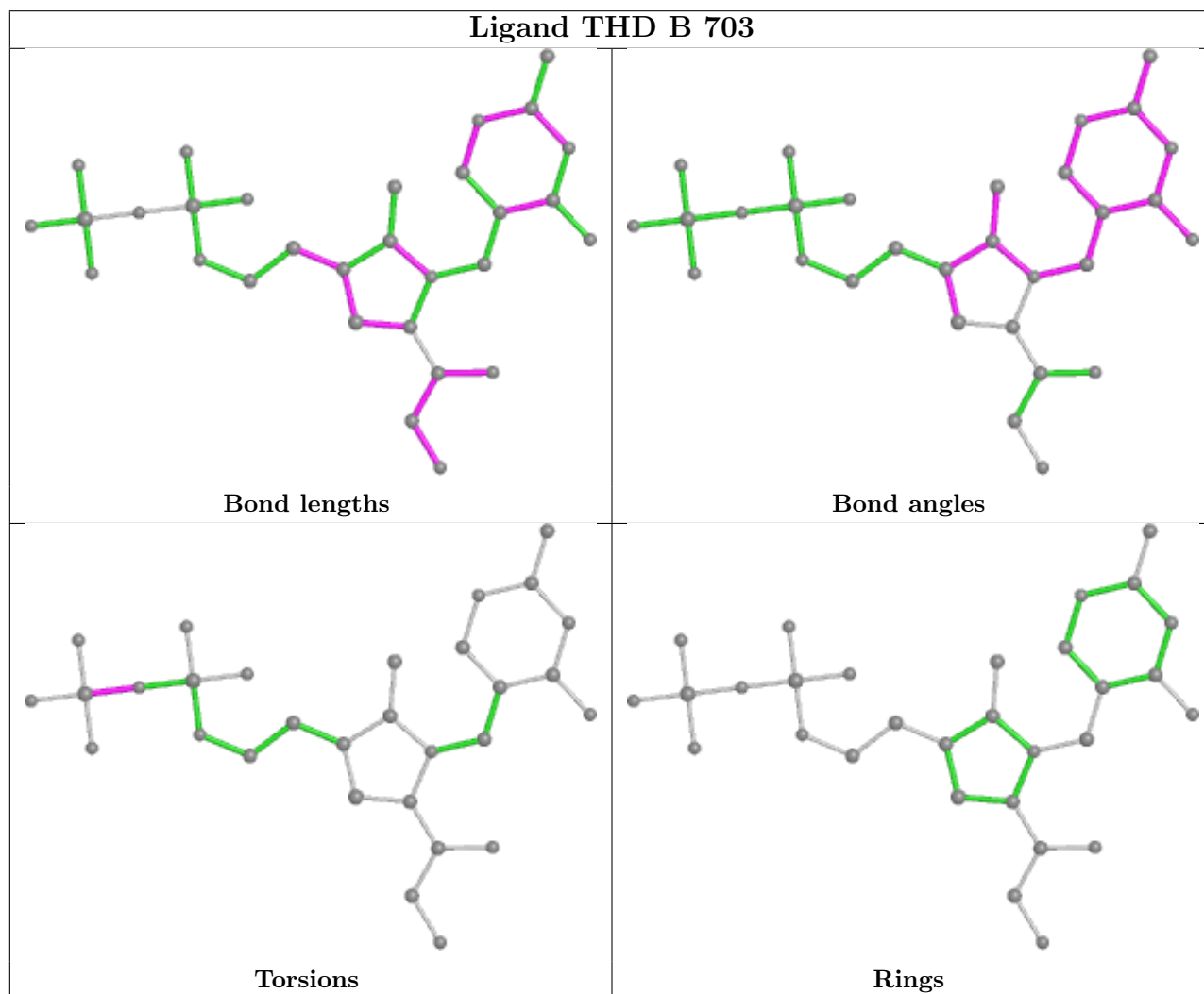
Mol	Chain	Res	Type	Clashes	Symm-Clashes
5	A	709	EDO	2	0
4	B	703	THD	2	0
4	A	703	THD	4	0
3	B	702	3GR	1	0

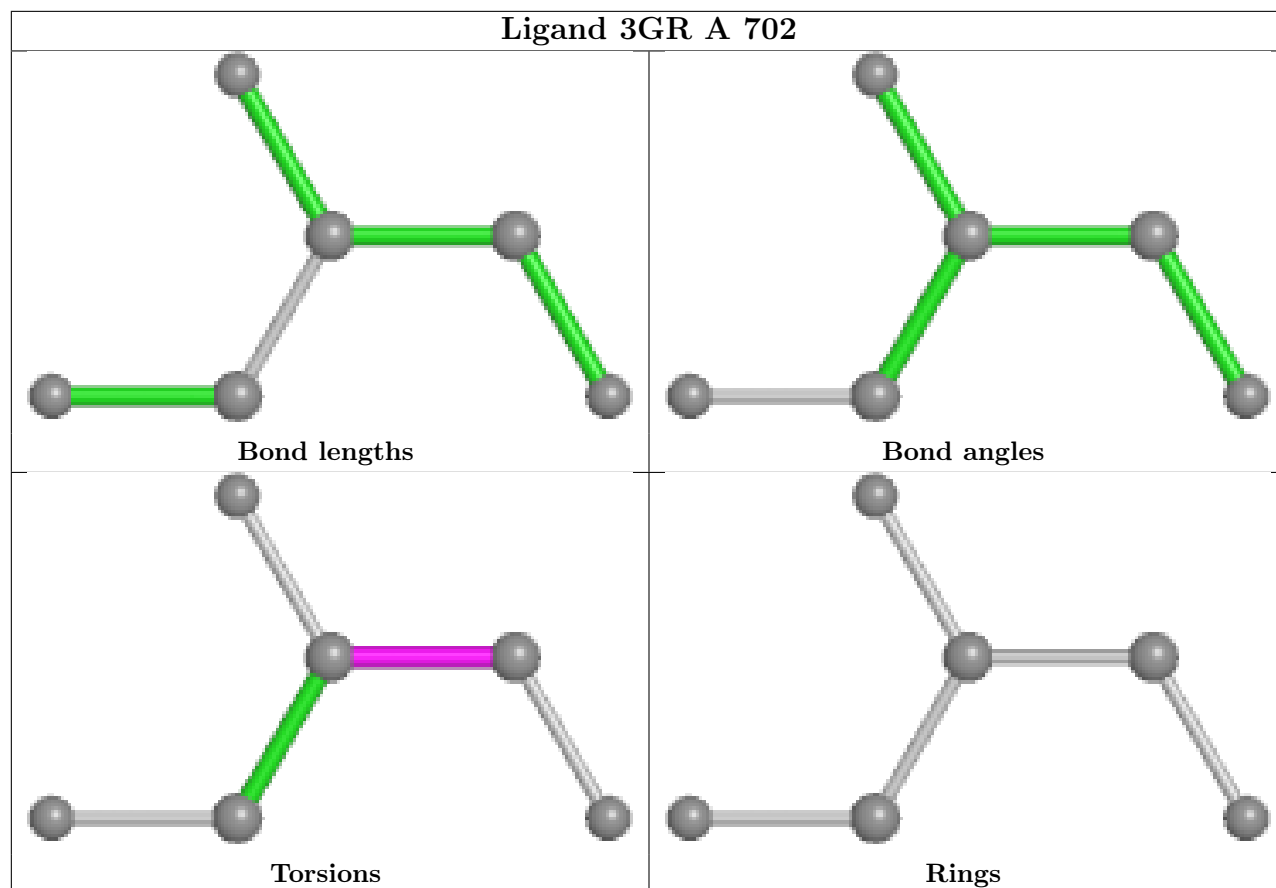
Continued on next page...

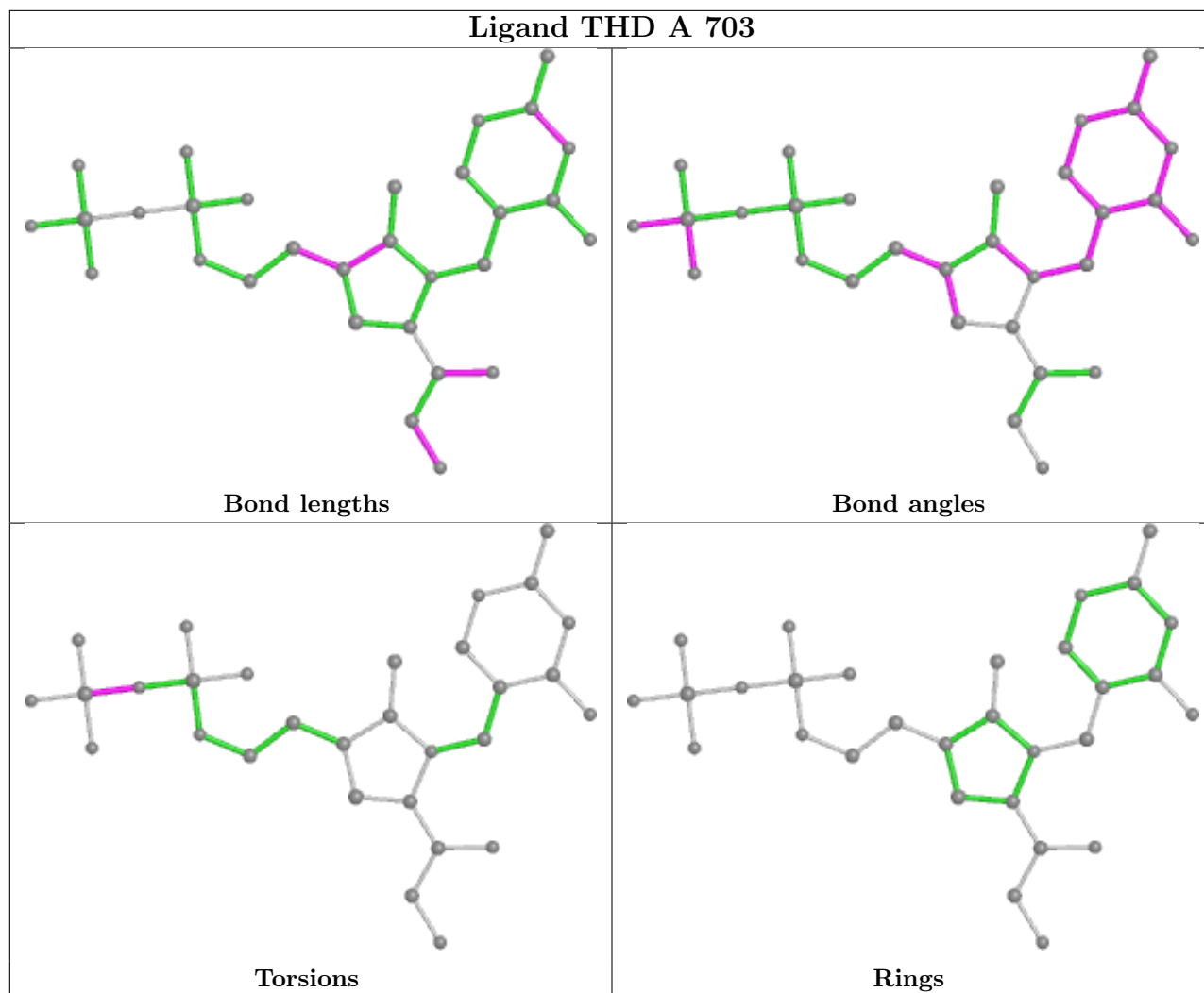
Continued from previous page...

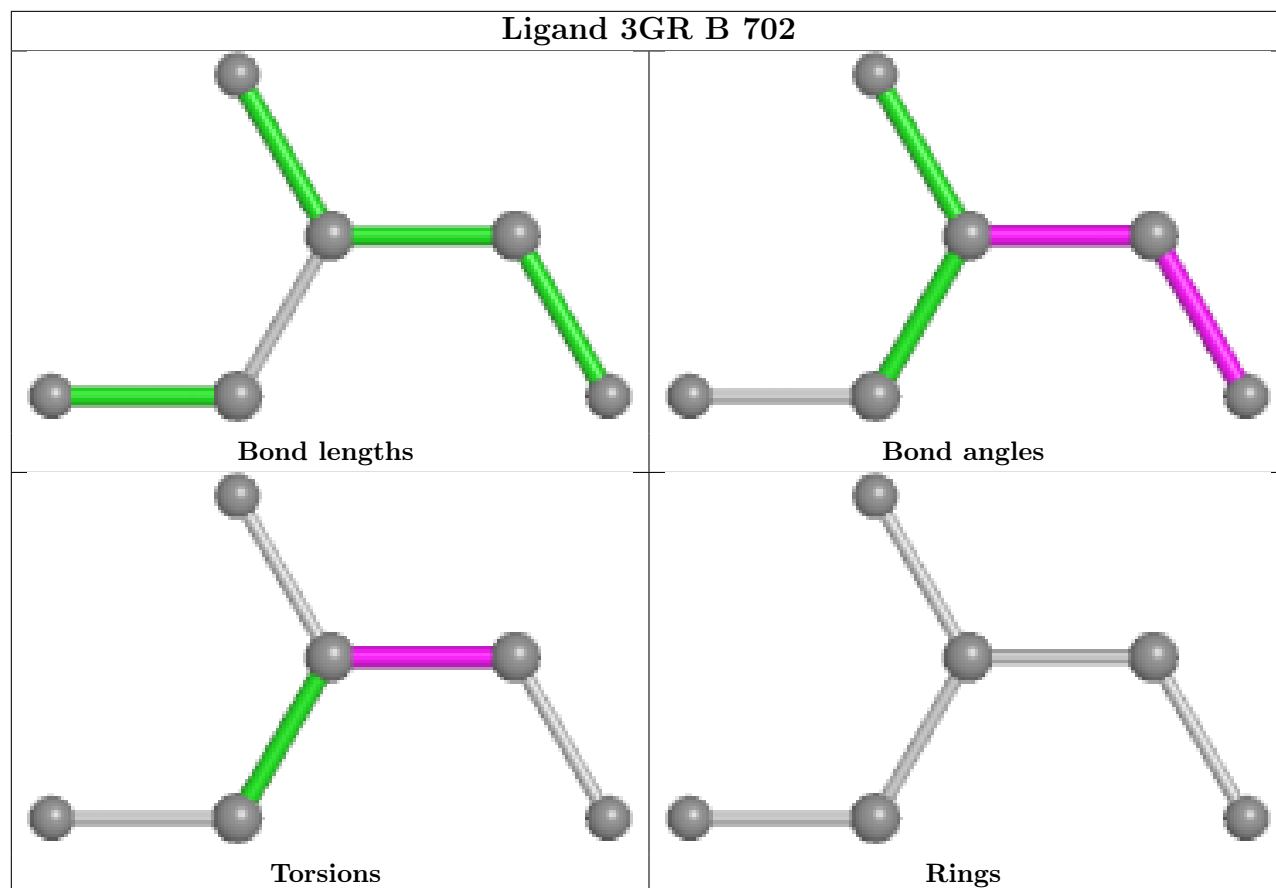
Mol	Chain	Res	Type	Clashes	Symm-Clashes
5	B	710	EDO	2	0

The following is a two-dimensional graphical depiction of Mogul quality analysis of bond lengths, bond angles, torsion angles, and ring geometry for all instances of the Ligand of Interest. In addition, ligands with molecular weight > 250 and outliers as shown on the validation Tables will also be included. For torsion angles, if less than 5% of the Mogul distribution of torsion angles is within 10 degrees of the torsion angle in question, then that torsion angle is considered an outlier. Any bond that is central to one or more torsion angles identified as an outlier by Mogul will be highlighted in the graph. For rings, the root-mean-square deviation (RMSD) between the ring in question and similar rings identified by Mogul is calculated over all ring torsion angles. If the average RMSD is greater than 60 degrees and the minimal RMSD between the ring in question and any Mogul-identified rings is also greater than 60 degrees, then that ring is considered an outlier. The outliers are highlighted in purple. The color gray indicates Mogul did not find sufficient equivalents in the CSD to analyse the geometry.









5.7 Other polymers [i](#)

There are no such residues in this entry.

5.8 Polymer linkage issues [i](#)

There are no chain breaks in this entry.

6 Fit of model and data [i](#)

6.1 Protein, DNA and RNA chains [i](#)

In the following table, the column labelled ‘#RSRZ > 2’ contains the number (and percentage) of RSRZ outliers, followed by percent RSRZ outliers for the chain as percentile scores relative to all X-ray entries and entries of similar resolution. The OWAB column contains the minimum, median, 95th percentile and maximum values of the occupancy-weighted average B-factor per residue. The column labelled ‘Q < 0.9’ lists the number of (and percentage) of residues with an average occupancy less than 0.9.

Mol	Chain	Analysed	<RSRZ>	#RSRZ>2	OWAB(Å ²)	Q<0.9
1	A	620/637 (97%)	-0.05	17 (2%) 54 59	14, 20, 37, 58	0
1	B	620/637 (97%)	-0.06	15 (2%) 59 63	14, 20, 35, 66	0
All	All	1240/1274 (97%)	-0.05	32 (2%) 56 61	14, 20, 36, 66	0

All (32) RSRZ outliers are listed below:

Mol	Chain	Res	Type	RSRZ
1	B	620	ILE	5.9
1	A	526	LYS	4.5
1	B	231[A]	ALA	4.2
1	A	524	LYS	3.6
1	B	526	LYS	3.6
1	A	298	ILE	3.5
1	B	396	ALA	3.1
1	A	527	ILE	3.0
1	A	500	ASP	3.0
1	A	231	ALA	2.9
1	B	397	PHE	2.9
1	B	298	ILE	2.9
1	A	233	HIS	2.7
1	A	393	PHE	2.7
1	B	400	ILE	2.6
1	A	405	ILE	2.6
1	A	621	THR	2.5
1	A	2	GLU	2.3
1	B	2	GLU	2.3
1	B	391	ALA	2.2
1	B	304	PRO	2.2
1	A	394	THR	2.2
1	B	370	VAL	2.2
1	A	397	PHE	2.2

Continued on next page...

Continued from previous page...

Mol	Chain	Res	Type	RSRZ
1	A	618	GLY	2.2
1	B	619	LEU	2.1
1	A	297	ASP	2.1
1	B	394	THR	2.1
1	A	620	ILE	2.0
1	B	524	LYS	2.0
1	A	396	ALA	2.0
1	B	404	ALA	2.0

6.2 Non-standard residues in protein, DNA, RNA chains [i](#)

There are no non-standard protein/DNA/RNA residues in this entry.

6.3 Carbohydrates [i](#)

There are no monosaccharides in this entry.

6.4 Ligands [i](#)

In the following table, the Atoms column lists the number of modelled atoms in the group and the number defined in the chemical component dictionary. The B-factors column lists the minimum, median, 95th percentile and maximum values of B factors of atoms in the group. The column labelled 'Q< 0.9' lists the number of atoms with occupancy less than 0.9.

Mol	Type	Chain	Res	Atoms	RSCC	RSR	B-factors(Å ²)	Q<0.9
5	EDO	A	714	4/4	0.78	0.17	35,39,42,49	0
5	EDO	B	717	4/4	0.84	0.12	36,38,39,45	0
5	EDO	B	708	4/4	0.85	0.16	29,30,33,35	0
5	EDO	B	704	4/4	0.85	0.15	30,33,35,37	0
5	EDO	A	704	4/4	0.86	0.11	29,29,29,32	0
3	3GR	B	702	6/6	0.87	0.15	33,36,48,55	0
5	EDO	B	715	4/4	0.87	0.09	34,40,41,44	0
3	3GR	A	702	6/6	0.87	0.14	25,27,41,43	6
5	EDO	A	710	4/4	0.88	0.12	28,31,34,35	0
5	EDO	B	705	4/4	0.89	0.15	27,30,32,33	0
5	EDO	B	711	4/4	0.89	0.20	24,33,35,38	0
5	EDO	A	708	4/4	0.90	0.14	32,33,35,40	0
5	EDO	B	716	4/4	0.91	0.12	29,29,35,38	0
5	EDO	B	713	4/4	0.92	0.11	22,29,31,37	0
5	EDO	A	712	4/4	0.93	0.12	22,26,30,33	0

Continued on next page...

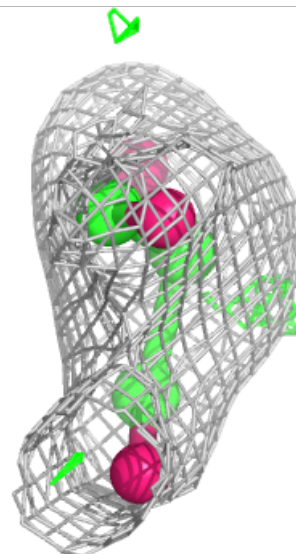
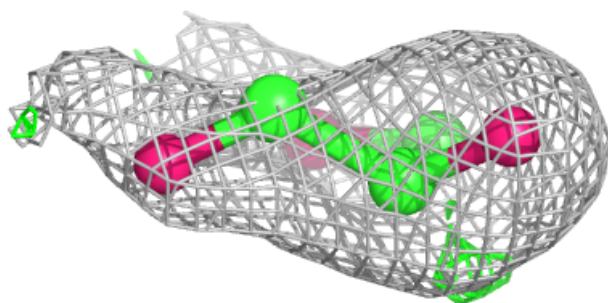
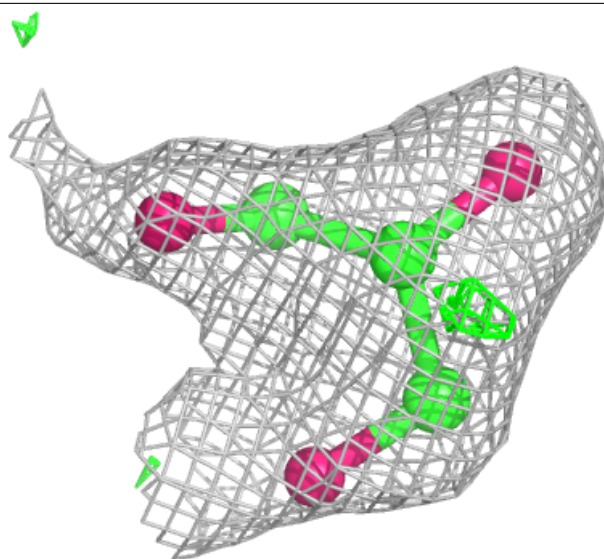
Continued from previous page...

Mol	Type	Chain	Res	Atoms	RSCC	RSR	B-factors(\AA^2)	Q<0.9
5	EDO	B	707	4/4	0.93	0.08	19,20,21,24	0
5	EDO	A	711	4/4	0.94	0.11	24,28,29,29	0
5	EDO	A	709	4/4	0.94	0.10	20,22,27,31	0
5	EDO	A	713	4/4	0.94	0.10	19,24,31,31	0
5	EDO	A	707	4/4	0.94	0.08	19,22,22,24	0
5	EDO	B	709	4/4	0.94	0.09	21,24,26,35	0
5	EDO	B	714	4/4	0.95	0.06	22,29,29,30	0
5	EDO	A	706	4/4	0.96	0.09	18,20,21,22	0
5	EDO	A	705	4/4	0.96	0.08	20,27,30,30	0
5	EDO	B	712	4/4	0.97	0.09	18,26,31,33	0
5	EDO	B	706	4/4	0.97	0.08	19,21,21,24	0
4	THD	A	703	30/30	0.98	0.09	12,16,21,24	4
5	EDO	B	710	4/4	0.98	0.07	24,25,26,28	0
4	THD	B	703	30/30	0.98	0.08	14,15,22,23	4
2	CA	B	701	1/1	1.00	0.06	20,20,20,20	0
2	CA	A	701	1/1	1.00	0.06	22,22,22,22	0

The following is a graphical depiction of the model fit to experimental electron density of all instances of the Ligand of Interest. In addition, ligands with molecular weight > 250 and outliers as shown on the geometry validation Tables will also be included. Each fit is shown from different orientation to approximate a three-dimensional view.

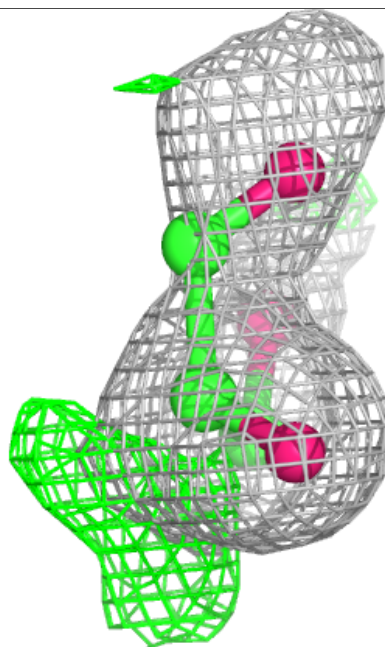
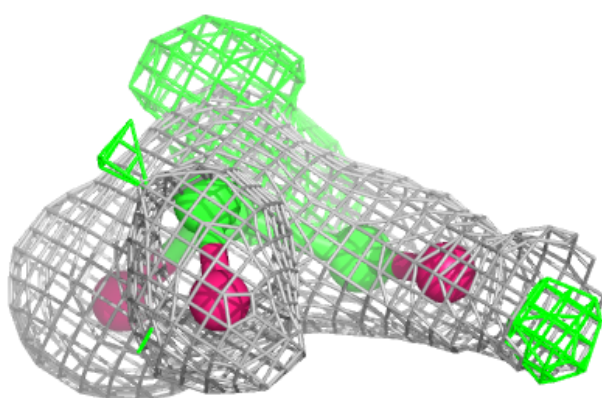
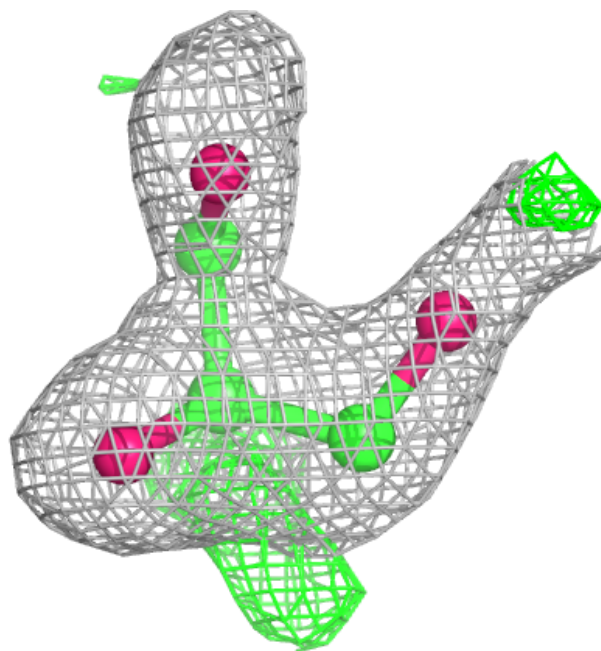
Electron density around 3GR B 702:

$2mF_o-DF_c$ (at 0.7 rmsd) in gray
 mF_o-DF_c (at 3 rmsd) in purple (negative)
and green (positive)



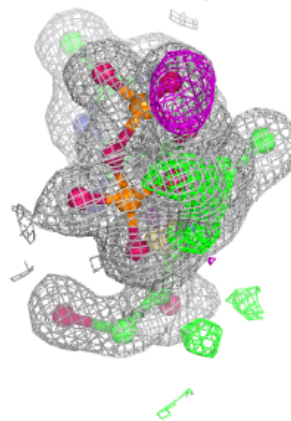
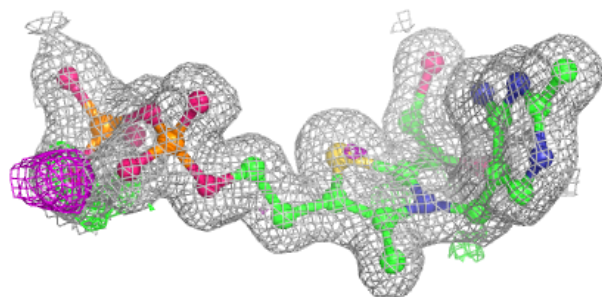
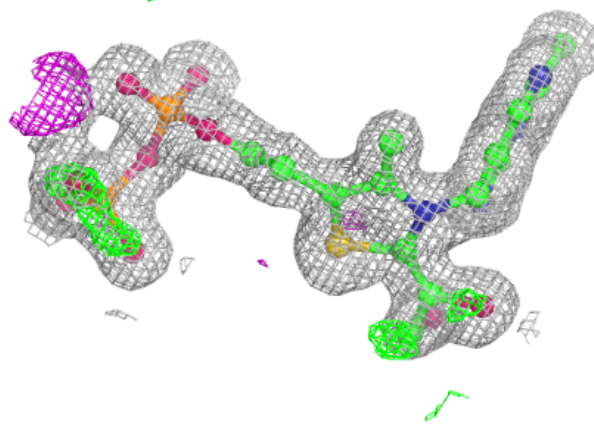
Electron density around 3GR A 702:

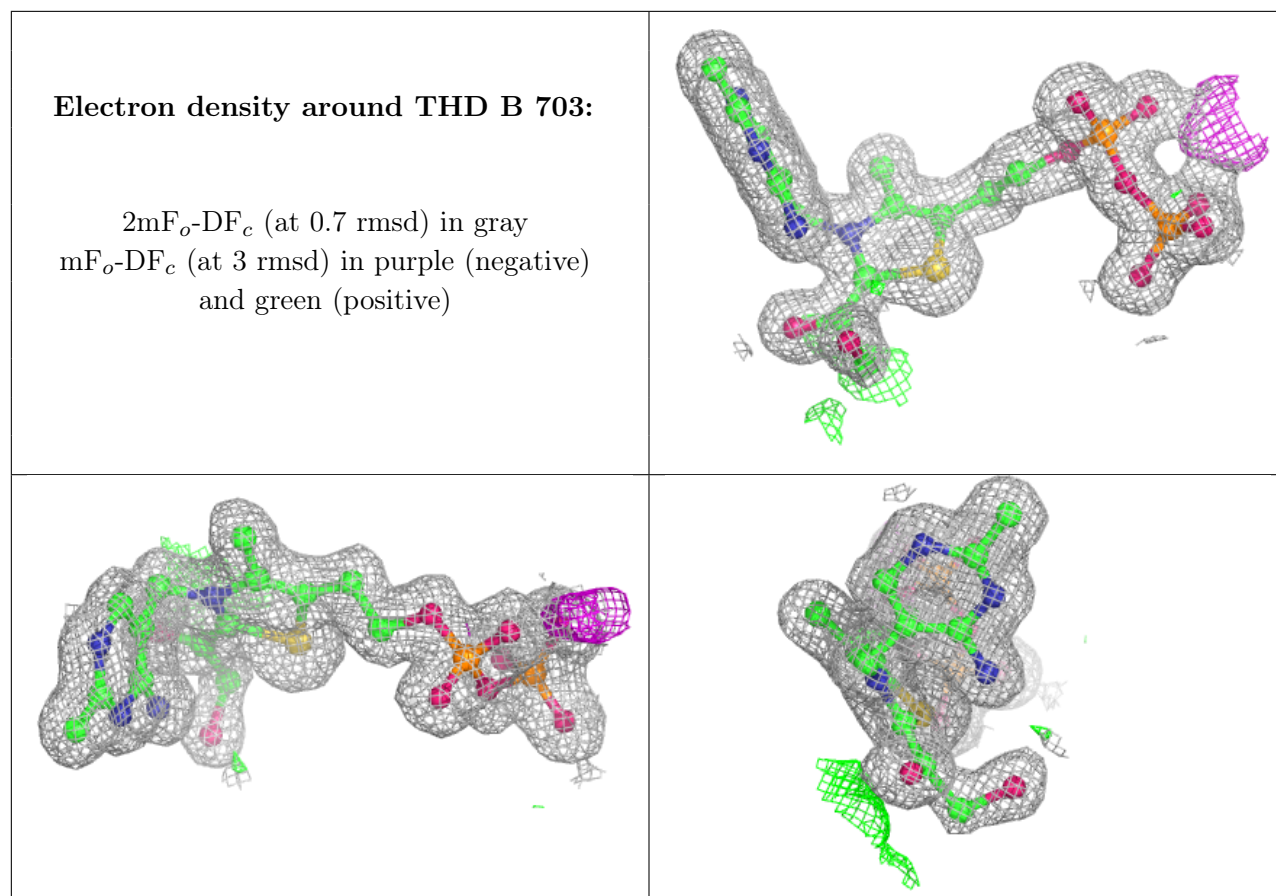
$2mF_o-DF_c$ (at 0.7 rmsd) in gray
 mF_o-DF_c (at 3 rmsd) in purple (negative)
and green (positive)



Electron density around THD A 703:

$2mF_o-DF_c$ (at 0.7 rmsd) in gray
 mF_o-DF_c (at 3 rmsd) in purple (negative)
and green (positive)





6.5 Other polymers ⓘ

There are no such residues in this entry.