



Full wwPDB X-ray Structure Validation Report ⓘ

Oct 8, 2023 – 10:13 PM EDT

PDB ID : 6W8F
Title : K2P2.1 (TREK-1):ML335 complex, 0 mM K+
Authors : Lolicato, M.; Minor, D.L.
Deposited on : 2020-03-20
Resolution : 3.40 Å(reported)

This is a Full wwPDB X-ray Structure Validation Report for a publicly released PDB entry.

We welcome your comments at validation@mail.wwpdb.org

A user guide is available at

<https://www.wwpdb.org/validation/2017/XrayValidationReportHelp>

with specific help available everywhere you see the ⓘ symbol.

The types of validation reports are described at

<http://www.wwpdb.org/validation/2017/FAQs#types>.

The following versions of software and data (see [references ⓘ](#)) were used in the production of this report:

MolProbity : 4.02b-467
Mogul : 1.8.5 (274361), CSD as541be (2020)
Xtriage (Phenix) : 1.13
EDS : 2.35.1
buster-report : 1.1.7 (2018)
Percentile statistics : 20191225.v01 (using entries in the PDB archive December 25th 2019)
Refmac : 5.8.0158
CCP4 : 7.0.044 (Gargrove)
Ideal geometry (proteins) : Engh & Huber (2001)
Ideal geometry (DNA, RNA) : Parkinson et al. (1996)
Validation Pipeline (wwPDB-VP) : 2.35.1

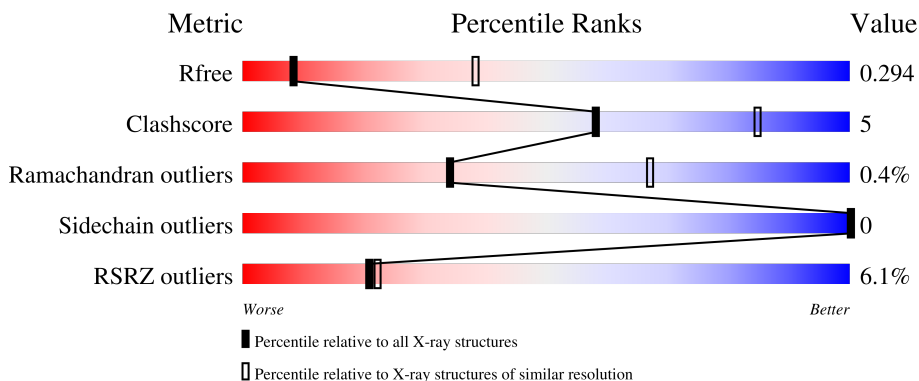
1 Overall quality at a glance

The following experimental techniques were used to determine the structure:

X-RAY DIFFRACTION

The reported resolution of this entry is 3.40 Å.

Percentile scores (ranging between 0-100) for global validation metrics of the entry are shown in the following graphic. The table shows the number of entries on which the scores are based.



Metric	Whole archive (#Entries)	Similar resolution (#Entries, resolution range(Å))
R_{free}	130704	1026 (3.48-3.32)
Clashscore	141614	1055 (3.48-3.32)
Ramachandran outliers	138981	1038 (3.48-3.32)
Sidechain outliers	138945	1038 (3.48-3.32)
RSRZ outliers	127900	2173 (3.50-3.30)

The table below summarises the geometric issues observed across the polymeric chains and their fit to the electron density. The red, orange, yellow and green segments of the lower bar indicate the fraction of residues that contain outliers for ≥ 3 , 2, 1 and 0 types of geometric quality criteria respectively. A grey segment represents the fraction of residues that are not modelled. The numeric value for each fraction is indicated below the corresponding segment, with a dot representing fractions $\leq 5\%$. The upper red bar (where present) indicates the fraction of residues that have poor fit to the electron density. The numeric value is given above the bar.

Mol	Chain	Length	Quality of chain
1	A	312	 4% 77% 11% 12%
1	B	312	 7% 77% 13% 10%

2 Entry composition [i](#)

There are 8 unique types of molecules in this entry. The entry contains 4557 atoms, of which 0 are hydrogens and 0 are deuteriums.

In the tables below, the ZeroOcc column contains the number of atoms modelled with zero occupancy, the AltConf column contains the number of residues with at least one atom in alternate conformation and the Trace column contains the number of residues modelled with at most 2 atoms.

- Molecule 1 is a protein called Potassium channel subfamily K member 2.

Mol	Chain	Residues	Atoms					ZeroOcc	AltConf	Trace
			Total	C	N	O	S			
1	A	276	2167	1446	341	375	5	0	1	0
1	B	281	2182	1453	345	379	5	0	0	0

There are 46 discrepancies between the modelled and reference sequences:

Chain	Residue	Modelled	Actual	Comment	Reference
A	20	MET	-	expression tag	UNP P97438
A	84	ARG	LYS	engineered mutation	UNP P97438
A	85	GLU	GLN	engineered mutation	UNP P97438
A	86	LYS	THR	engineered mutation	UNP P97438
A	88	LEU	ILE	engineered mutation	UNP P97438
A	89	ARG	ALA	engineered mutation	UNP P97438
A	90	ALA	GLN	engineered mutation	UNP P97438
A	92	PRO	ALA	engineered mutation	UNP P97438
A	95	SER	ASN	engineered mutation	UNP P97438
A	96	ASP	SER	engineered mutation	UNP P97438
A	97	GLN	THR	engineered mutation	UNP P97438
A	119	ALA	ASN	engineered mutation	UNP P97438
A	300	ALA	SER	engineered mutation	UNP P97438
A	306	ALA	GLU	engineered mutation	UNP P97438
A	323	SER	-	expression tag	UNP P97438
A	324	ASN	-	expression tag	UNP P97438
A	325	SER	-	expression tag	UNP P97438
A	326	LEU	-	expression tag	UNP P97438
A	327	GLU	-	expression tag	UNP P97438
A	328	VAL	-	expression tag	UNP P97438
A	329	LEU	-	expression tag	UNP P97438
A	330	PHE	-	expression tag	UNP P97438
A	331	GLN	-	expression tag	UNP P97438
B	20	MET	-	expression tag	UNP P97438
B	84	ARG	LYS	engineered mutation	UNP P97438

Continued on next page...

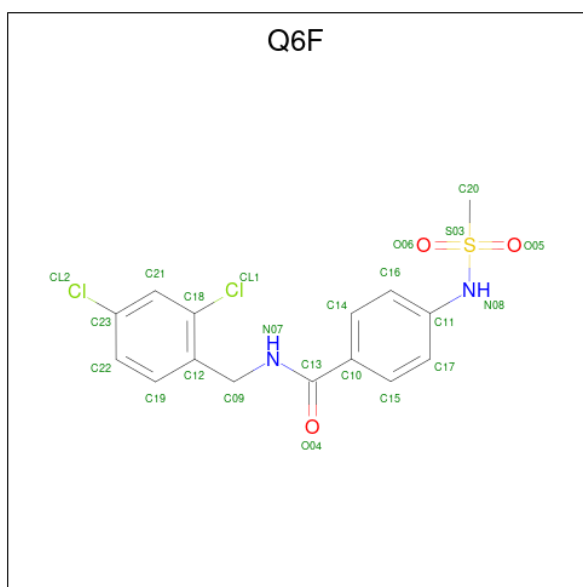
Continued from previous page...

Chain	Residue	Modelled	Actual	Comment	Reference
B	85	GLU	GLN	engineered mutation	UNP P97438
B	86	LYS	THR	engineered mutation	UNP P97438
B	88	LEU	ILE	engineered mutation	UNP P97438
B	89	ARG	ALA	engineered mutation	UNP P97438
B	90	ALA	GLN	engineered mutation	UNP P97438
B	92	PRO	ALA	engineered mutation	UNP P97438
B	95	SER	ASN	engineered mutation	UNP P97438
B	96	ASP	SER	engineered mutation	UNP P97438
B	97	GLN	THR	engineered mutation	UNP P97438
B	119	ALA	ASN	engineered mutation	UNP P97438
B	300	ALA	SER	engineered mutation	UNP P97438
B	306	ALA	GLU	engineered mutation	UNP P97438
B	323	SER	-	expression tag	UNP P97438
B	324	ASN	-	expression tag	UNP P97438
B	325	SER	-	expression tag	UNP P97438
B	326	LEU	-	expression tag	UNP P97438
B	327	GLU	-	expression tag	UNP P97438
B	328	VAL	-	expression tag	UNP P97438
B	329	LEU	-	expression tag	UNP P97438
B	330	PHE	-	expression tag	UNP P97438
B	331	GLN	-	expression tag	UNP P97438

- Molecule 2 is POTASSIUM ION (three-letter code: K) (formula: K).

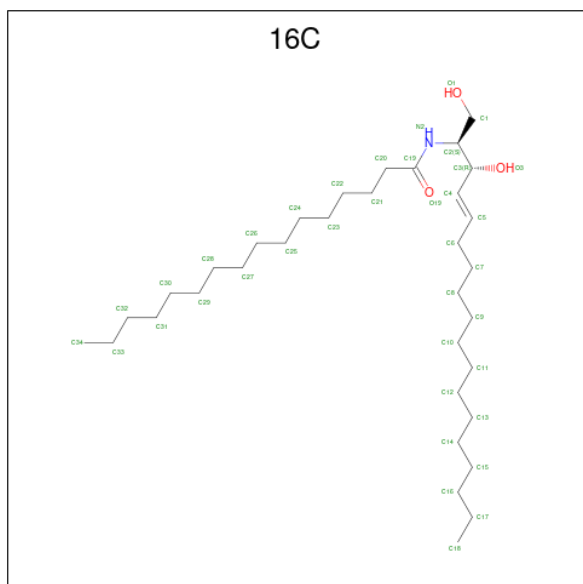
Mol	Chain	Residues	Atoms	ZeroOcc	AltConf
2	A	3	Total K 3 3	0	0
2	B	1	Total K 1 1	0	0

- Molecule 3 is N-[(2,4-dichlorophenyl)methyl]-4-[(methylsulfonyl)amino]benzamide (three-letter code: Q6F) (formula: C₁₅H₁₄Cl₂N₂O₃S).



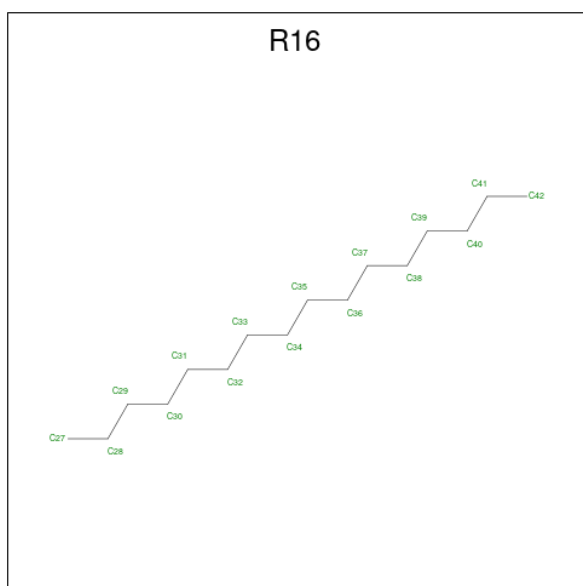
Mol	Chain	Residues	Atoms					ZeroOcc	AltConf	
			Total	C	Cl	N	O			S
3	A	1	23	15	2	2	3	1	0	0
3	B	1	23	15	2	2	3	1	0	0

- Molecule 4 is N-((E,2S,3R)-1,3-DIHYDROXYOCTADEC-4-EN-2-YL)PALMITAMIDE (three-letter code: 16C) (formula: C₃₄H₆₇NO₃).



Mol	Chain	Residues	Atoms				ZeroOcc	AltConf
			Total	C	N	O		
4	A	1	38	34	1	3	0	0

- Molecule 5 is HEXADECANE (three-letter code: R16) (formula: C₁₆H₃₄).

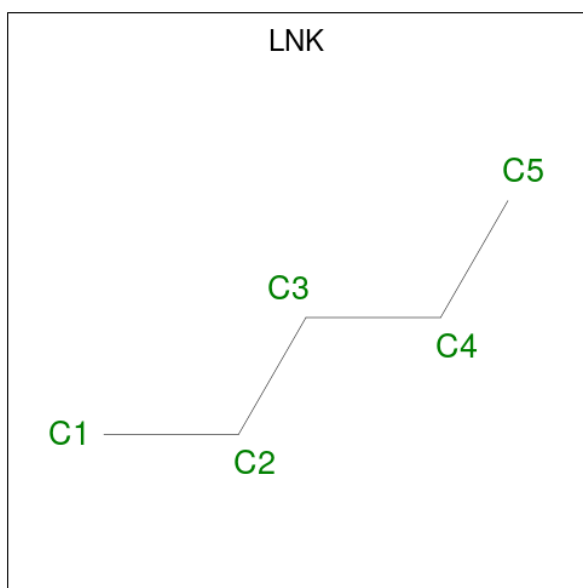


Mol	Chain	Residues	Atoms	ZeroOcc	AltConf
5	A	1	Total C 11 11	0	0
5	A	1	Total C 11 11	0	0
5	A	1	Total C 11 11	0	0
5	B	1	Total C 8 8	0	0
5	B	1	Total C 12 12	0	0
5	B	1	Total C 16 16	0	0
5	B	1	Total C 8 8	0	0
5	B	1	Total C 11 11	0	0
5	B	1	Total C 11 11	0	0

- Molecule 6 is CADMIUM ION (three-letter code: CD) (formula: Cd).

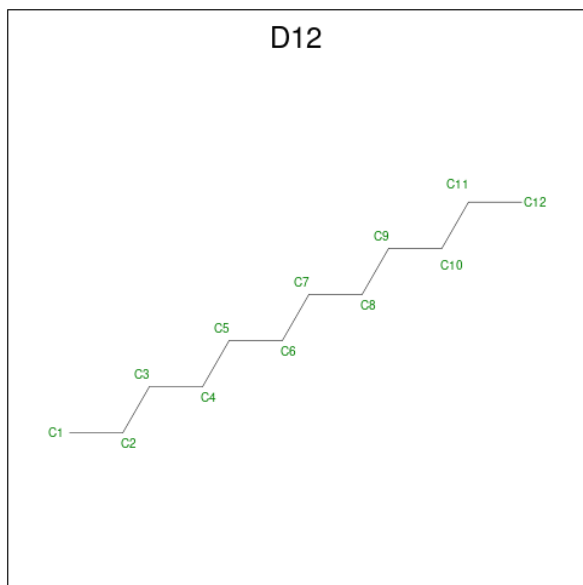
Mol	Chain	Residues	Atoms	ZeroOcc	AltConf
6	A	1	Total Cd 1 1	0	0
6	B	3	Total Cd 3 3	0	0

- Molecule 7 is PENTANE (three-letter code: LNK) (formula: C_5H_{12}).



Mol	Chain	Residues	Atoms	ZeroOcc	AltConf
7	A	1	Total C 5 5	0	0

- Molecule 8 is DODECANE (three-letter code: D12) (formula: $C_{12}H_{26}$).

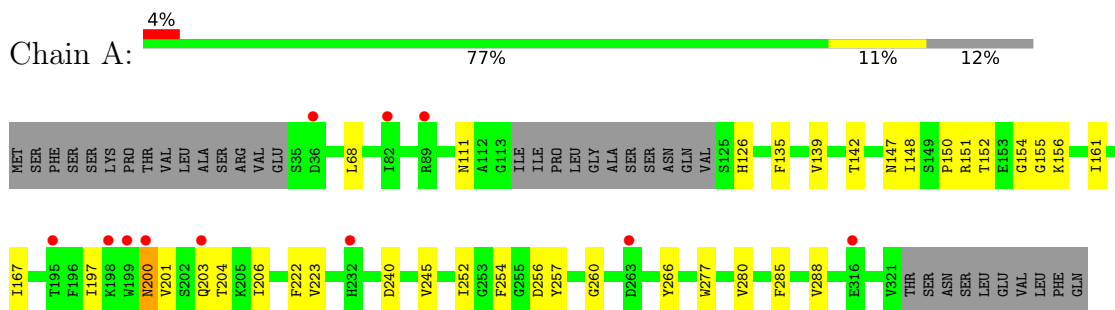


Mol	Chain	Residues	Atoms	ZeroOcc	AltConf
8	B	1	Total C 12 12	0	0

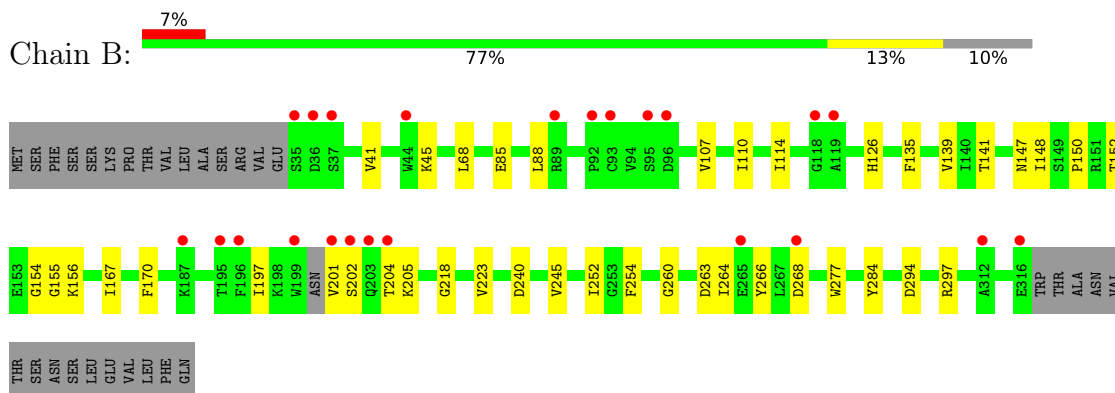
3 Residue-property plots [i](#)

These plots are drawn for all protein, RNA, DNA and oligosaccharide chains in the entry. The first graphic for a chain summarises the proportions of the various outlier classes displayed in the second graphic. The second graphic shows the sequence view annotated by issues in geometry and electron density. Residues are color-coded according to the number of geometric quality criteria for which they contain at least one outlier: green = 0, yellow = 1, orange = 2 and red = 3 or more. A red dot above a residue indicates a poor fit to the electron density ($RSRZ > 2$). Stretches of 2 or more consecutive residues without any outlier are shown as a green connector. Residues present in the sample, but not in the model, are shown in grey.

- Molecule 1: Potassium channel subfamily K member 2



- Molecule 1: Potassium channel subfamily K member 2



4 Data and refinement statistics

Property	Value	Source
Space group	P 21 21 21	Depositor
Cell constants a, b, c, α , β , γ	66.67Å 119.96Å 128.94Å 90.00° 90.00° 90.00°	Depositor
Resolution (Å)	14.99 – 3.40 15.00 – 3.40	Depositor EDS
% Data completeness (in resolution range)	93.6 (14.99-3.40) 93.6 (15.00-3.40)	Depositor EDS
R_{merge}	0.12	Depositor
R_{sym}	(Not available)	Depositor
$\langle I/\sigma(I) \rangle$ ¹	1.10 (at 3.40Å)	Xtrriage
Refinement program	BUSTER 2.10.3 (6-FEB-2020)	Depositor
R, R_{free}	0.247 , 0.267 0.273 , 0.294	Depositor DCC
R_{free} test set	696 reflections (5.08%)	wwPDB-VP
Wilson B-factor (Å ²)	131.6	Xtrriage
Anisotropy	0.087	Xtrriage
Bulk solvent k_{sol} (e/Å ³), B_{sol} (Å ²)	0.25 , 94.5	EDS
L-test for twinning ²	$\langle L \rangle = 0.40$, $\langle L^2 \rangle = 0.23$	Xtrriage
Estimated twinning fraction	No twinning to report.	Xtrriage
F_o, F_c correlation	0.93	EDS
Total number of atoms	4557	wwPDB-VP
Average B, all atoms (Å ²)	158.0	wwPDB-VP

Xtrriage's analysis on translational NCS is as follows: *The largest off-origin peak in the Patterson function is 4.15% of the height of the origin peak. No significant pseudotranslation is detected.*

¹Intensities estimated from amplitudes.

²Theoretical values of $\langle |L| \rangle$, $\langle L^2 \rangle$ for acentric reflections are 0.5, 0.333 respectively for untwinned datasets, and 0.375, 0.2 for perfectly twinned datasets.

5 Model quality [i](#)

5.1 Standard geometry [i](#)

Bond lengths and bond angles in the following residue types are not validated in this section: 16C, Q6F, CD, LNK, D12, K, R16

The Z score for a bond length (or angle) is the number of standard deviations the observed value is removed from the expected value. A bond length (or angle) with $|Z| > 5$ is considered an outlier worth inspection. RMSZ is the root-mean-square of all Z scores of the bond lengths (or angles).

Mol	Chain	Bond lengths		Bond angles	
		RMSZ	# Z >5	RMSZ	# Z >5
1	A	0.26	0/2224	0.43	0/3024
1	B	0.25	0/2234	0.44	0/3037
All	All	0.26	0/4458	0.43	0/6061

Chiral center outliers are detected by calculating the chiral volume of a chiral center and verifying if the center is modelled as a planar moiety or with the opposite hand. A planarity outlier is detected by checking planarity of atoms in a peptide group, atoms in a mainchain group or atoms of a sidechain that are expected to be planar.

Mol	Chain	#Chirality outliers	#Planarity outliers
1	A	0	1
1	B	0	2
All	All	0	3

There are no bond length outliers.

There are no bond angle outliers.

There are no chirality outliers.

All (3) planarity outliers are listed below:

Mol	Chain	Res	Type	Group
1	A	200	ASN	Peptide
1	B	263	ASP	Peptide
1	B	268	ASP	Peptide

5.2 Too-close contacts [i](#)

In the following table, the Non-H and H(model) columns list the number of non-hydrogen atoms and hydrogen atoms in the chain respectively. The H(added) column lists the number of hydrogen atoms added and optimized by MolProbity. The Clashes column lists the number of clashes within

the asymmetric unit, whereas Symm-Clashes lists symmetry-related clashes.

Mol	Chain	Non-H	H(model)	H(added)	Clashes	Symm-Clashes
1	A	2167	0	2217	25	0
1	B	2182	0	2242	29	0
2	A	3	0	0	0	0
2	B	1	0	0	0	0
3	A	23	0	0	0	0
3	B	23	0	0	0	0
4	A	38	0	67	0	0
5	A	33	0	54	1	0
5	B	66	0	114	0	0
6	A	1	0	0	0	0
6	B	3	0	0	0	0
7	A	5	0	12	0	0
8	B	12	0	26	0	0
All	All	4557	0	4732	45	0

The all-atom clashscore is defined as the number of clashes found per 1000 atoms (including hydrogen atoms). The all-atom clashscore for this structure is 5.

All (45) close contacts within the same asymmetric unit are listed below, sorted by their clash magnitude.

Atom-1	Atom-2	Interatomic distance (Å)	Clash overlap (Å)
1:B:197:ILE:HA	1:B:201:VAL:HG11	1.73	0.71
1:A:197:ILE:HD11	1:A:206:ILE:HG21	1.76	0.68
1:B:197:ILE:HG23	1:B:201:VAL:HG21	1.76	0.67
1:B:85:GLU:HG2	1:B:88:LEU:HD12	1.77	0.66
1:A:152:THR:HG22	1:A:154:GLY:H	1.64	0.63
1:B:152:THR:HG22	1:B:154:GLY:H	1.63	0.63
1:A:203:GLN:O	1:A:204:THR:OG1	2.17	0.62
1:A:156:LYS:NZ	1:B:240:ASP:OD1	2.30	0.61
1:A:245:VAL:HG13	1:A:277:TRP:HZ2	1.69	0.57
1:B:294:ASP:HA	1:B:297:ARG:HD2	1.84	0.57
1:A:167:ILE:HD11	1:B:252:ILE:HD11	1.89	0.54
1:B:245:VAL:HG13	1:B:277:TRP:HZ2	1.73	0.54
1:A:126:HIS:HB3	1:A:148:ILE:HD12	1.89	0.53
1:A:240:ASP:OD1	1:B:156:LYS:NZ	2.35	0.52
1:B:135:PHE:CZ	1:B:150:PRO:HD3	2.46	0.51
1:A:260:GLY:HA2	1:A:266:TYR:CZ	2.45	0.51
1:B:204:THR:HG23	1:B:205:LYS:HD2	1.91	0.51
1:A:135:PHE:CZ	1:A:150:PRO:HD3	2.45	0.51
1:B:107:VAL:O	1:B:110:ILE:HG22	2.11	0.51

Continued on next page...

Continued from previous page...

Atom-1	Atom-2	Interatomic distance (Å)	Clash overlap (Å)
1:B:202:SER:OG	1:B:205:LYS:HB2	2.13	0.49
1:B:260:GLY:HA2	1:B:266:TYR:CZ	2.48	0.49
1:B:126:HIS:HB3	1:B:148:ILE:HD12	1.94	0.48
1:B:223:VAL:HA	1:B:245:VAL:HG11	1.95	0.48
1:A:161:ILE:HG12	5:A:404:R16:H342	1.96	0.47
1:B:85:GLU:HA	1:B:88:LEU:HB2	1.96	0.47
1:B:110:ILE:HA	1:B:114:ILE:HG12	1.95	0.47
1:A:223:VAL:HA	1:A:245:VAL:HG11	1.95	0.47
1:A:142:THR:HA	1:B:252:ILE:HG12	1.97	0.47
1:B:260:GLY:HA2	1:B:266:TYR:CE1	2.50	0.47
1:A:256:ASP:OD1	1:A:257:TYR:N	2.49	0.46
1:B:147:ASN:OD1	1:B:148:ILE:N	2.51	0.44
1:A:155:GLY:HA2	1:B:68:LEU:HD13	2.00	0.44
1:A:222:PHE:CE1	1:A:280:VAL:HG12	2.52	0.44
1:B:218:GLY:HA3	1:B:284:TYR:CZ	2.54	0.43
1:A:111:ASN:O	1:A:151:ARG:NE	2.37	0.43
1:B:141:THR:HG22	1:B:170:PHE:CZ	2.54	0.43
1:A:197:ILE:HG13	1:A:206:ILE:HD13	2.01	0.43
1:A:254:PHE:HZ	1:B:139:VAL:HG22	1.83	0.43
1:A:252:ILE:HD11	1:B:167:ILE:HD11	2.00	0.42
1:B:41:VAL:HG12	1:B:45:LYS:HE3	2.01	0.42
1:A:68:LEU:HD13	1:B:155:GLY:HA2	2.01	0.42
1:A:201:VAL:O	1:A:206:ILE:HD11	2.18	0.42
1:A:147:ASN:OD1	1:A:148:ILE:N	2.52	0.42
1:A:139:VAL:HG22	1:B:254:PHE:HZ	1.85	0.41
1:A:285:PHE:HA	1:A:288:VAL:HB	2.02	0.41

There are no symmetry-related clashes.

5.3 Torsion angles [\(i\)](#)

5.3.1 Protein backbone [\(i\)](#)

In the following table, the Percentiles column shows the percent Ramachandran outliers of the chain as a percentile score with respect to all X-ray entries followed by that with respect to entries of similar resolution.

The Analysed column shows the number of residues for which the backbone conformation was analysed, and the total number of residues.

Mol	Chain	Analysed	Favoured	Allowed	Outliers	Percentiles	
1	A	273/312 (88%)	260 (95%)	12 (4%)	1 (0%)	34	67
1	B	277/312 (89%)	263 (95%)	13 (5%)	1 (0%)	34	67
All	All	550/624 (88%)	523 (95%)	25 (4%)	2 (0%)	34	67

All (2) Ramachandran outliers are listed below:

Mol	Chain	Res	Type
1	A	200	ASN
1	B	264	ILE

5.3.2 Protein sidechains [i](#)

In the following table, the Percentiles column shows the percent sidechain outliers of the chain as a percentile score with respect to all X-ray entries followed by that with respect to entries of similar resolution.

The Analysed column shows the number of residues for which the sidechain conformation was analysed, and the total number of residues.

Mol	Chain	Analysed	Rotameric	Outliers	Percentiles	
1	A	228/260 (88%)	228 (100%)	0	100	100
1	B	230/260 (88%)	230 (100%)	0	100	100
All	All	458/520 (88%)	458 (100%)	0	100	100

There are no protein residues with a non-rotameric sidechain to report.

Sometimes sidechains can be flipped to improve hydrogen bonding and reduce clashes. There are no such sidechains identified.

5.3.3 RNA [i](#)

There are no RNA molecules in this entry.

5.4 Non-standard residues in protein, DNA, RNA chains [i](#)

There are no non-standard protein/DNA/RNA residues in this entry.

5.5 Carbohydrates [i](#)

There are no monosaccharides in this entry.

5.6 Ligand geometry

Of 22 ligands modelled in this entry, 8 are monoatomic - leaving 14 for Mogul analysis.

In the following table, the Counts columns list the number of bonds (or angles) for which Mogul statistics could be retrieved, the number of bonds (or angles) that are observed in the model and the number of bonds (or angles) that are defined in the Chemical Component Dictionary. The Link column lists molecule types, if any, to which the group is linked. The Z score for a bond length (or angle) is the number of standard deviations the observed value is removed from the expected value. A bond length (or angle) with $|Z| > 2$ is considered an outlier worth inspection. RMSZ is the root-mean-square of all Z scores of the bond lengths (or angles).

Mol	Type	Chain	Res	Link	Bond lengths			Bond angles		
					Counts	RMSZ	# Z > 2	Counts	RMSZ	# Z > 2
5	R16	B	410	-	10,10,15	0.29	0	9,9,14	0.83	0
3	Q6F	B	409	-	24,24,24	1.90	5 (20%)	34,34,34	2.85	8 (23%)
5	R16	B	411	-	10,10,15	0.29	0	9,9,14	0.83	0
5	R16	B	402	-	7,7,15	0.31	0	6,6,14	0.73	0
4	16C	A	403	-	36,37,37	1.62	5 (13%)	37,39,39	1.05	1 (2%)
5	R16	A	404	-	10,10,15	0.30	0	9,9,14	0.82	0
5	R16	B	406	-	11,11,15	0.29	0	10,10,14	0.86	0
5	R16	B	407	-	15,15,15	0.29	0	14,14,14	0.88	0
5	R16	B	408	-	7,7,15	0.30	0	6,6,14	0.74	0
5	R16	A	406	-	10,10,15	0.30	0	9,9,14	0.82	0
8	D12	B	412	-	11,11,11	0.30	0	10,10,10	0.82	0
5	R16	A	405	-	10,10,15	0.30	0	9,9,14	0.82	0
3	Q6F	A	402	-	24,24,24	1.92	5 (20%)	34,34,34	2.61	7 (20%)
7	LNK	A	410	-	4,4,4	0.31	0	3,3,3	0.55	0

In the following table, the Chirals column lists the number of chiral outliers, the number of chiral centers analysed, the number of these observed in the model and the number defined in the Chemical Component Dictionary. Similar counts are reported in the Torsion and Rings columns. '-' means no outliers of that kind were identified.

Mol	Type	Chain	Res	Link	Chirals	Torsions	Rings
5	R16	B	410	-	-	1/8/8/13	-
3	Q6F	B	409	-	-	2/14/14/14	0/2/2/2
5	R16	B	411	-	-	3/8/8/13	-
5	R16	B	402	-	-	1/5/5/13	-
4	16C	A	403	-	-	18/40/40/40	-
5	R16	A	404	-	-	3/8/8/13	-
5	R16	B	406	-	-	1/9/9/13	-
5	R16	B	407	-	-	0/13/13/13	-
5	R16	B	408	-	-	0/5/5/13	-

Continued on next page...

Continued from previous page...

Mol	Type	Chain	Res	Link	Chirals	Torsions	Rings
5	R16	A	406	-	-	0/8/8/13	-
8	D12	B	412	-	-	5/9/9/9	-
5	R16	A	405	-	-	3/8/8/13	-
3	Q6F	A	402	-	-	1/14/14/14	0/2/2/2
7	LNK	A	410	-	-	1/2/2/2	-

All (15) bond length outliers are listed below:

Mol	Chain	Res	Type	Atoms	Z	Observed(Å)	Ideal(Å)
4	A	403	16C	C19-N2	6.73	1.48	1.34
3	A	402	Q6F	C13-N07	5.18	1.45	1.33
3	B	409	Q6F	C13-N07	4.93	1.44	1.33
3	B	409	Q6F	S03-N08	4.37	1.69	1.63
3	A	402	Q6F	S03-N08	4.16	1.68	1.63
3	B	409	Q6F	C10-C13	3.48	1.57	1.50
3	A	402	Q6F	C11-N08	3.43	1.48	1.43
3	A	402	Q6F	C10-C13	3.34	1.57	1.50
3	B	409	Q6F	C11-N08	3.29	1.48	1.43
3	A	402	Q6F	C20-S03	2.50	1.81	1.75
3	B	409	Q6F	C20-S03	2.48	1.81	1.75
4	A	403	16C	C20-C19	2.48	1.56	1.51
4	A	403	16C	C3-C4	2.48	1.54	1.50
4	A	403	16C	O3-C3	-2.39	1.39	1.43
4	A	403	16C	O19-C19	-2.13	1.18	1.23

All (16) bond angle outliers are listed below:

Mol	Chain	Res	Type	Atoms	Z	Observed(°)	Ideal(°)
3	B	409	Q6F	O06-S03-O05	-12.76	100.50	118.85
3	A	402	Q6F	O06-S03-O05	-11.67	102.07	118.85
3	B	409	Q6F	C16-C11-N08	4.89	130.67	120.09
3	A	402	Q6F	C12-C09-N07	-4.86	102.78	113.03
3	B	409	Q6F	C17-C11-N08	-4.82	109.67	120.09
3	B	409	Q6F	C12-C09-N07	-3.31	106.05	113.03
3	A	402	Q6F	C16-C11-N08	3.25	127.13	120.09
3	B	409	Q6F	C20-S03-N08	3.25	110.34	106.63
3	A	402	Q6F	C17-C11-N08	-3.09	113.42	120.09
3	B	409	Q6F	O06-S03-N08	2.85	112.92	107.10
3	A	402	Q6F	O05-S03-N08	2.84	112.89	107.10
3	B	409	Q6F	C21-C18-C12	-2.80	119.93	122.42
3	A	402	Q6F	C21-C18-C12	-2.69	120.03	122.42
3	A	402	Q6F	O06-S03-N08	2.44	112.08	107.10

Continued on next page...

Continued from previous page...

Mol	Chain	Res	Type	Atoms	Z	Observed(°)	Ideal(°)
3	B	409	Q6F	C19-C12-C18	2.36	120.80	116.91
4	A	403	16C	C20-C19-N2	2.04	119.37	115.83

There are no chirality outliers.

All (39) torsion outliers are listed below:

Mol	Chain	Res	Type	Atoms
4	A	403	16C	C2-C3-C4-C5
4	A	403	16C	O3-C3-C4-C5
8	B	412	D12	C3-C4-C5-C6
4	A	403	16C	C11-C10-C9-C8
4	A	403	16C	C19-C20-C21-C22
5	A	405	R16	C34-C35-C36-C37
8	B	412	D12	C4-C5-C6-C7
4	A	403	16C	C29-C30-C31-C32
5	B	406	R16	C30-C31-C32-C33
8	B	412	D12	C7-C8-C9-C10
5	B	402	R16	C34-C35-C36-C37
3	A	402	Q6F	C11-N08-S03-C20
4	A	403	16C	C20-C21-C22-C23
4	A	403	16C	C24-C25-C26-C27
4	A	403	16C	C11-C12-C13-C14
5	A	405	R16	C38-C39-C40-C41
5	B	411	R16	C31-C32-C33-C34
4	A	403	16C	C21-C22-C23-C24
4	A	403	16C	C27-C28-C29-C30
3	B	409	Q6F	C11-N08-S03-O05
5	B	411	R16	C36-C37-C38-C39
4	A	403	16C	C15-C16-C17-C18
7	A	410	LNK	C2-C3-C4-C5
5	A	405	R16	C33-C34-C35-C36
4	A	403	16C	C23-C24-C25-C26
8	B	412	D12	C11-C10-C9-C8
4	A	403	16C	C6-C7-C8-C9
4	A	403	16C	C4-C5-C6-C7
5	A	404	R16	C36-C37-C38-C39
8	B	412	D12	C6-C7-C8-C9
5	B	411	R16	C32-C33-C34-C35
3	B	409	Q6F	C11-N08-S03-C20
4	A	403	16C	O19-C19-C20-C21
4	A	403	16C	C31-C32-C33-C34
5	A	404	R16	C34-C35-C36-C37

Continued on next page...

Continued from previous page...

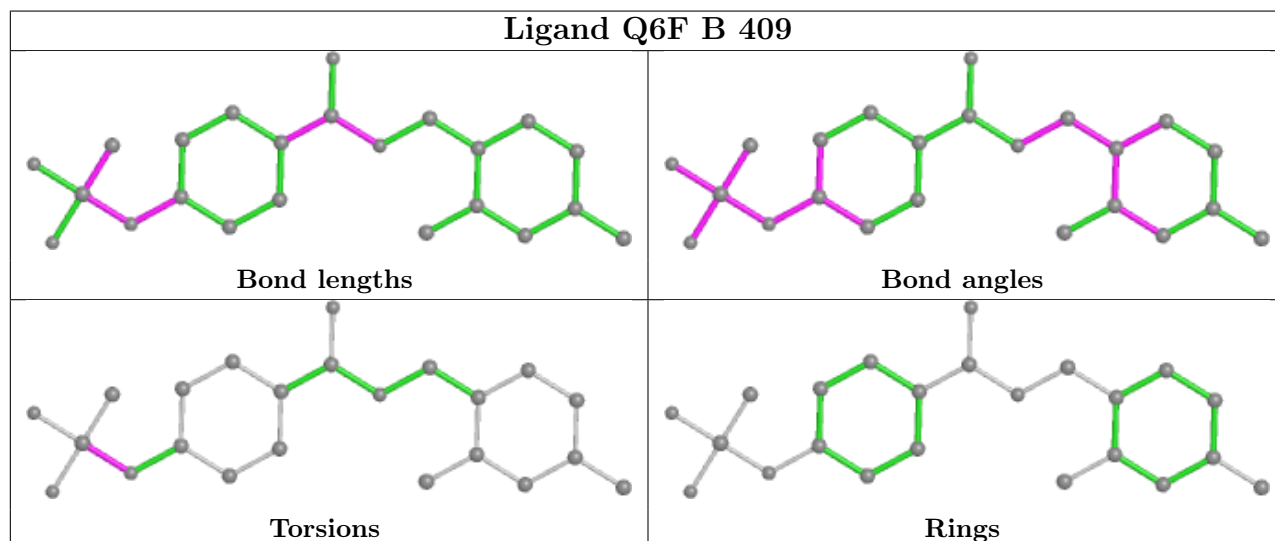
Mol	Chain	Res	Type	Atoms
4	A	403	16C	C30-C31-C32-C33
4	A	403	16C	N2-C19-C20-C21
5	B	410	R16	C32-C33-C34-C35
5	A	404	R16	C35-C36-C37-C38

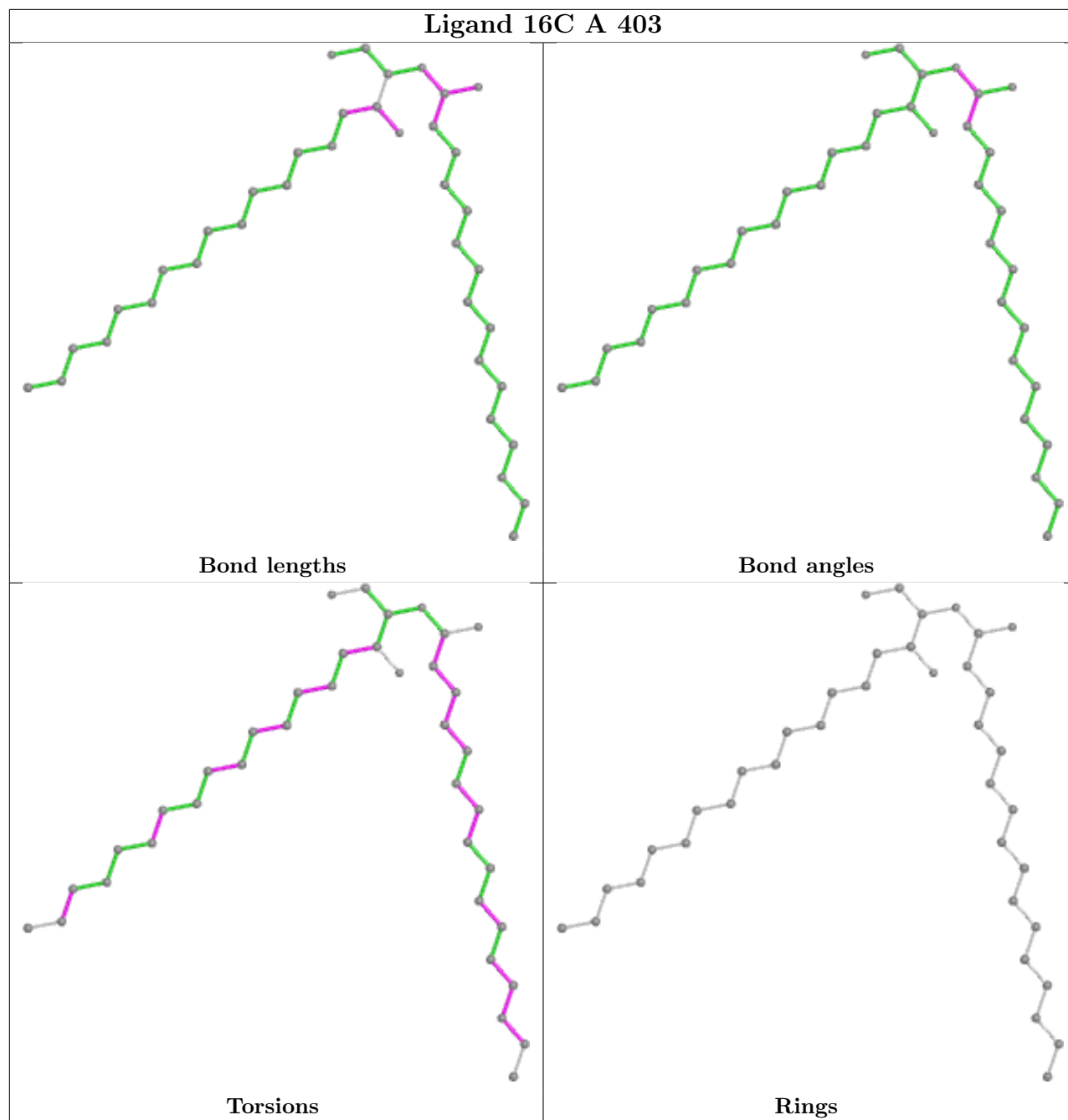
There are no ring outliers.

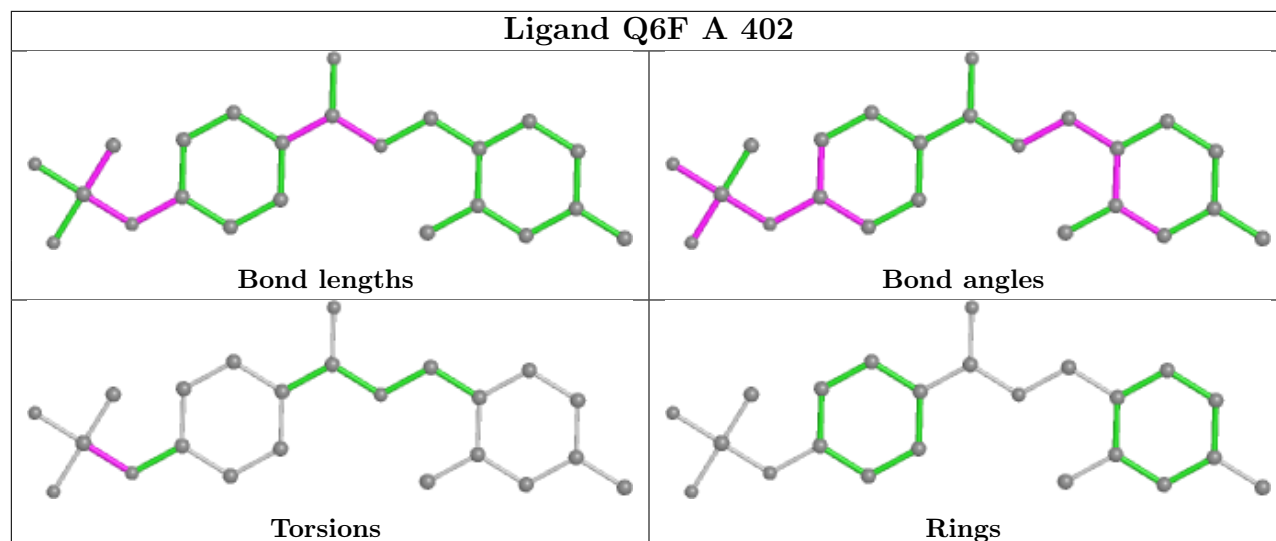
1 monomer is involved in 1 short contact:

Mol	Chain	Res	Type	Clashes	Symm-Clashes
5	A	404	R16	1	0

The following is a two-dimensional graphical depiction of Mogul quality analysis of bond lengths, bond angles, torsion angles, and ring geometry for all instances of the Ligand of Interest. In addition, ligands with molecular weight > 250 and outliers as shown on the validation Tables will also be included. For torsion angles, if less than 5% of the Mogul distribution of torsion angles is within 10 degrees of the torsion angle in question, then that torsion angle is considered an outlier. Any bond that is central to one or more torsion angles identified as an outlier by Mogul will be highlighted in the graph. For rings, the root-mean-square deviation (RMSD) between the ring in question and similar rings identified by Mogul is calculated over all ring torsion angles. If the average RMSD is greater than 60 degrees and the minimal RMSD between the ring in question and any Mogul-identified rings is also greater than 60 degrees, then that ring is considered an outlier. The outliers are highlighted in purple. The color gray indicates Mogul did not find sufficient equivalents in the CSD to analyse the geometry.







5.7 Other polymers [i](#)

There are no such residues in this entry.

5.8 Polymer linkage issues [i](#)

There are no chain breaks in this entry.

6 Fit of model and data

6.1 Protein, DNA and RNA chains

In the following table, the column labelled ‘#RSRZ > 2’ contains the number (and percentage) of RSRZ outliers, followed by percent RSRZ outliers for the chain as percentile scores relative to all X-ray entries and entries of similar resolution. The OWAB column contains the minimum, median, 95th percentile and maximum values of the occupancy-weighted average B-factor per residue. The column labelled ‘Q < 0.9’ lists the number of (and percentage) of residues with an average occupancy less than 0.9.

Mol	Chain	Analysed	<RSRZ>	#RSRZ>2	OWAB(Å ²)	Q<0.9
1	A	276/312 (88%)	-0.07	11 (3%) 38 37	112, 150, 214, 293	0
1	B	281/312 (90%)	0.03	23 (8%) 11 13	103, 149, 230, 280	0
All	All	557/624 (89%)	-0.02	34 (6%) 21 22	103, 149, 228, 293	0

All (34) RSRZ outliers are listed below:

Mol	Chain	Res	Type	RSRZ
1	B	95	SER	5.6
1	A	199	TRP	5.4
1	B	199	TRP	5.4
1	B	195	THR	5.4
1	B	93	CYS	4.7
1	B	35	SER	4.3
1	B	203	GLN	4.0
1	B	118	GLY	3.4
1	B	201	VAL	3.4
1	B	89	ARG	3.4
1	A	232	HIS	3.3
1	B	196	PHE	3.2
1	A	89	ARG	3.2
1	B	44	TRP	3.1
1	B	268	ASP	3.0
1	A	316	GLU	2.8
1	A	200	ASN	2.7
1	B	265	GLU	2.7
1	A	195	THR	2.6
1	A	263	ASP	2.6
1	B	202	SER	2.5
1	B	92	PRO	2.5
1	A	36	ASP	2.5
1	A	82	ILE	2.5

Continued on next page...

Continued from previous page...

Mol	Chain	Res	Type	RSRZ
1	B	316	GLU	2.4
1	B	119	ALA	2.3
1	B	204	THR	2.3
1	A	203	GLN	2.3
1	B	96	ASP	2.2
1	B	187	LYS	2.1
1	B	37	SER	2.1
1	B	36	ASP	2.1
1	A	198	LYS	2.0
1	B	312	ALA	2.0

6.2 Non-standard residues in protein, DNA, RNA chains [i](#)

There are no non-standard protein/DNA/RNA residues in this entry.

6.3 Carbohydrates [i](#)

There are no monosaccharides in this entry.

6.4 Ligands [i](#)

In the following table, the Atoms column lists the number of modelled atoms in the group and the number defined in the chemical component dictionary. The B-factors column lists the minimum, median, 95th percentile and maximum values of B factors of atoms in the group. The column labelled 'Q< 0.9' lists the number of atoms with occupancy less than 0.9.

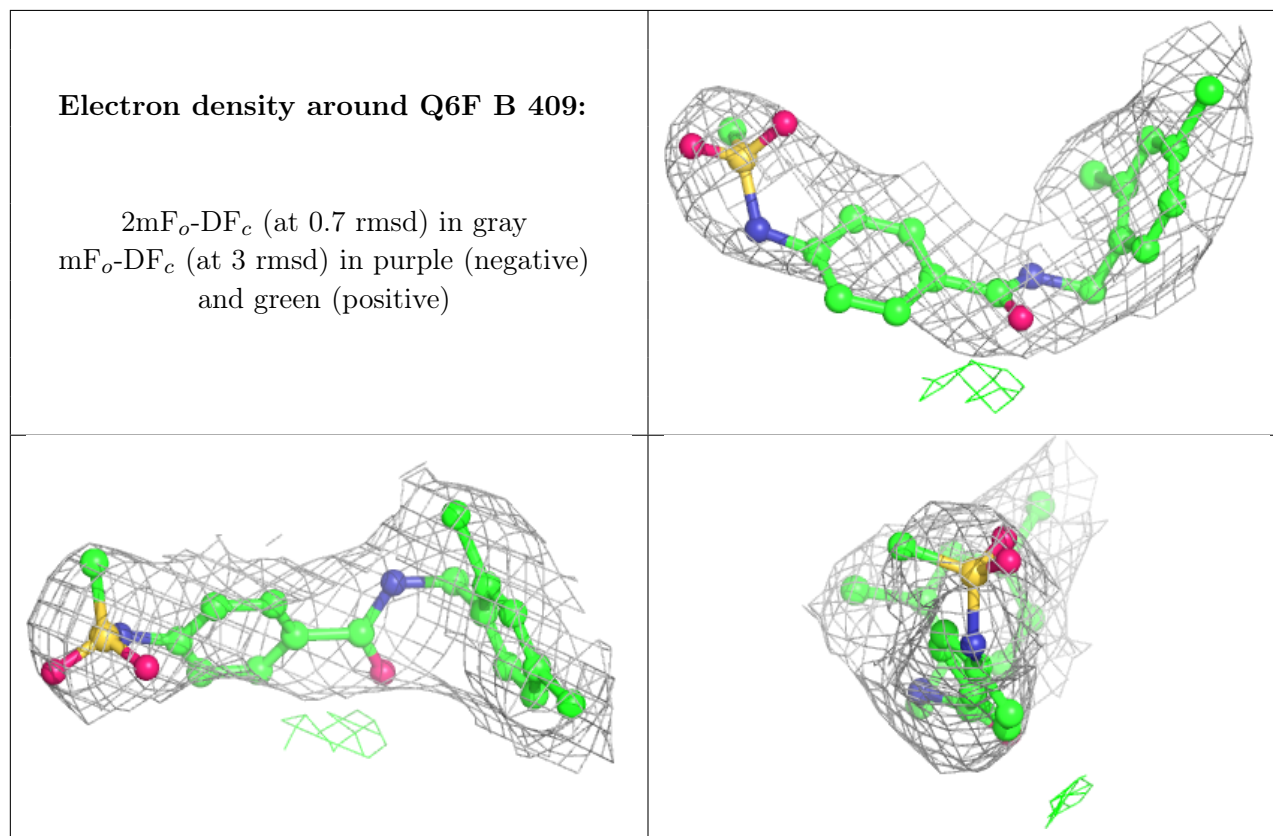
Mol	Type	Chain	Res	Atoms	RSCC	RSR	B-factors(Å ²)	Q<0.9
5	R16	A	405	11/16	0.72	0.39	119,125,132,132	0
5	R16	B	406	12/16	0.73	0.38	134,138,140,141	0
7	LNK	A	410	5/5	0.78	0.34	139,139,140,140	0
6	CD	B	405	1/1	0.81	0.19	203,203,203,203	1
2	K	A	407	1/1	0.81	0.10	157,157,157,157	0
5	R16	A	404	11/16	0.82	0.19	128,132,138,138	0
3	Q6F	B	409	23/23	0.84	0.27	133,142,164,167	0
5	R16	B	411	11/16	0.85	0.26	119,127,138,139	0
5	R16	A	406	11/16	0.85	0.30	125,132,134,134	0
5	R16	B	407	16/16	0.85	0.21	107,110,123,124	0
6	CD	A	409	1/1	0.86	0.23	184,184,184,184	1
6	CD	B	404	1/1	0.87	0.08	171,171,171,171	0
4	16C	A	403	38/38	0.87	0.22	126,140,158,161	0

Continued on next page...

Continued from previous page...

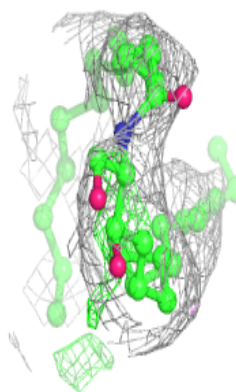
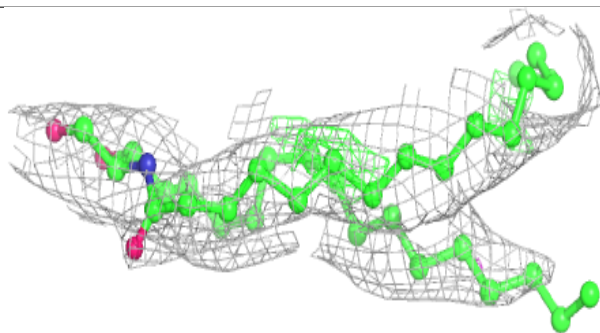
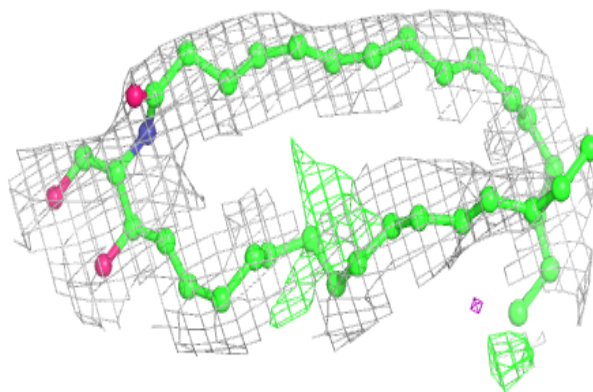
Mol	Type	Chain	Res	Atoms	RSCC	RSR	B-factors(\AA^2)	Q<0.9
3	Q6F	A	402	23/23	0.87	0.24	147,157,171,171	0
8	D12	B	412	12/12	0.87	0.24	131,132,137,138	0
2	K	A	401	1/1	0.88	0.08	130,130,130,130	0
5	R16	B	410	11/16	0.88	0.19	127,133,134,136	0
2	K	A	408	1/1	0.89	0.05	140,140,140,140	0
6	CD	B	403	1/1	0.89	0.06	254,254,254,254	0
2	K	B	401	1/1	0.91	0.06	147,147,147,147	0
5	R16	B	402	8/16	0.92	0.13	128,131,141,142	0
5	R16	B	408	8/16	0.93	0.24	131,135,137,138	0

The following is a graphical depiction of the model fit to experimental electron density of all instances of the Ligand of Interest. In addition, ligands with molecular weight > 250 and outliers as shown on the geometry validation Tables will also be included. Each fit is shown from different orientation to approximate a three-dimensional view.

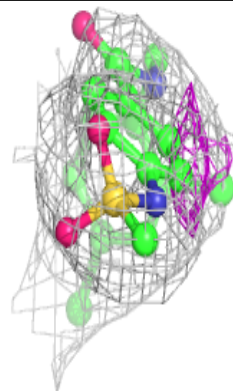
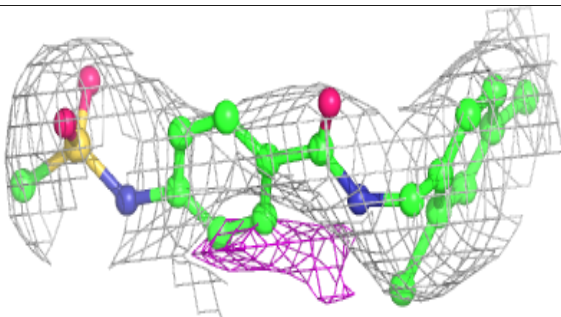
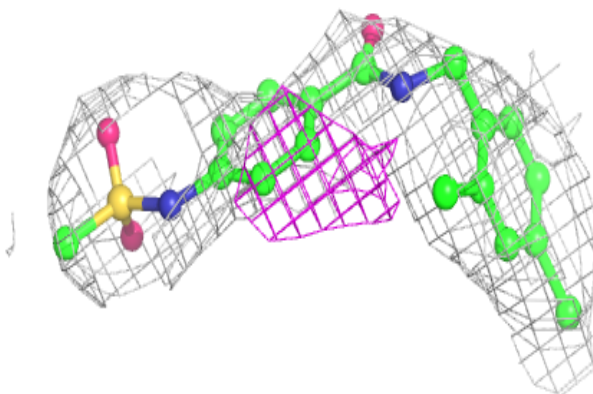


Electron density around 16C A 403:

$2mF_o-DF_c$ (at 0.7 rmsd) in gray
 mF_o-DF_c (at 3 rmsd) in purple (negative)
and green (positive)

**Electron density around Q6F A 402:**

$2mF_o-DF_c$ (at 0.7 rmsd) in gray
 mF_o-DF_c (at 3 rmsd) in purple (negative)
and green (positive)



6.5 Other polymers [i](#)

There are no such residues in this entry.