



Full wwPDB X-ray Structure Validation Report ⓘ

Dec 8, 2023 – 12:15 am GMT

PDB ID : 2W48
Title : Crystal structure of the Full-length Sorbitol Operon Regulator SorC from *Klebsiella pneumoniae*
Authors : de Sanctis, D.; McVey, C.E.; Enguita, F.J.; Carrondo, M.A.
Deposited on : 2008-11-21
Resolution : 3.20 Å (reported)

This is a Full wwPDB X-ray Structure Validation Report for a publicly released PDB entry.

We welcome your comments at validation@mail.wwpdb.org

A user guide is available at

<https://www.wwpdb.org/validation/2017/XrayValidationReportHelp>

with specific help available everywhere you see the ⓘ symbol.

The types of validation reports are described at

<http://www.wwpdb.org/validation/2017/FAQs#types>.

The following versions of software and data (see [references ⓘ](#)) were used in the production of this report:

MolProbity : 4.02b-467
Mogul : 1.8.4, CSD as541be (2020)
Xtriage (Phenix) : 1.13
EDS : 2.36
Percentile statistics : 20191225.v01 (using entries in the PDB archive December 25th 2019)
Refmac : 5.8.0158
CCP4 : 7.0.044 (Gargrove)
Ideal geometry (proteins) : Engh & Huber (2001)
Ideal geometry (DNA, RNA) : Parkinson et al. (1996)
Validation Pipeline (wwPDB-VP) : 2.36

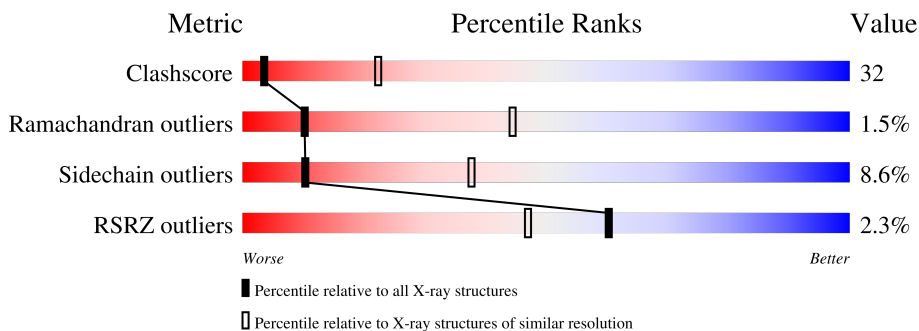
1 Overall quality at a glance

The following experimental techniques were used to determine the structure:

X-RAY DIFFRACTION

The reported resolution of this entry is 3.20 Å.

Percentile scores (ranging between 0-100) for global validation metrics of the entry are shown in the following graphic. The table shows the number of entries on which the scores are based.



Metric	Whole archive (#Entries)	Similar resolution (#Entries, resolution range(Å))
Clashscore	141614	1253 (3.20-3.20)
Ramachandran outliers	138981	1234 (3.20-3.20)
Sidechain outliers	138945	1233 (3.20-3.20)
RSRZ outliers	127900	1095 (3.20-3.20)

The table below summarises the geometric issues observed across the polymeric chains and their fit to the electron density. The red, orange, yellow and green segments of the lower bar indicate the fraction of residues that contain outliers for ≥ 3 , 2, 1 and 0 types of geometric quality criteria respectively. A grey segment represents the fraction of residues that are not modelled. The numeric value for each fraction is indicated below the corresponding segment, with a dot representing fractions $\leq 5\%$. The upper red bar (where present) indicates the fraction of residues that have poor fit to the electron density. The numeric value is given above the bar.

Mol	Chain	Length	Quality of chain
1	A	315	
1	B	315	
1	C	315	
1	D	315	

The following table lists non-polymeric compounds, carbohydrate monomers and non-standard residues in protein, DNA, RNA chains that are outliers for geometric or electron-density-fit criteria:

Mol	Type	Chain	Res	Chirality	Geometry	Clashes	Electron density
3	MPD	A	1317	-	-	X	-

2 Entry composition [i](#)

There are 6 unique types of molecules in this entry. The entry contains 9626 atoms, of which 0 are hydrogens and 0 are deuteriums.

In the tables below, the ZeroOcc column contains the number of atoms modelled with zero occupancy, the AltConf column contains the number of residues with at least one atom in alternate conformation and the Trace column contains the number of residues modelled with at most 2 atoms.

- Molecule 1 is a protein called SORBITOL OPERON REGULATOR.

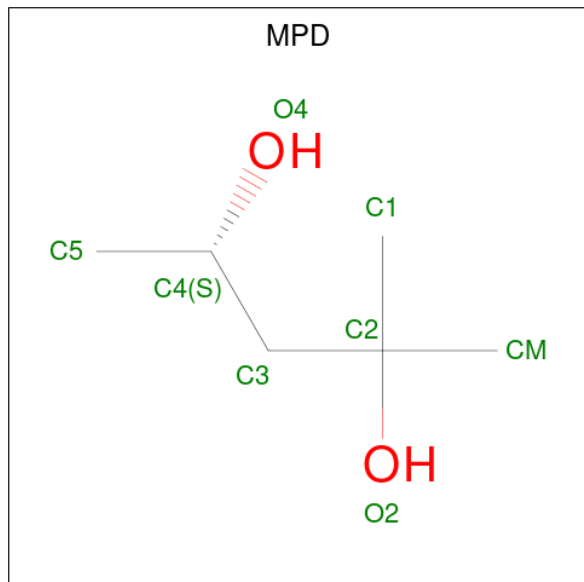
Mol	Chain	Residues	Atoms					ZeroOcc	AltConf	Trace
			Total	C	N	O	S			
1	A	308	Total 2408	C 1514	N 429	O 456	S 9	0	0	0
1	B	313	Total 2443	C 1534	N 435	O 465	S 9	0	0	0
1	C	299	Total 2337	C 1472	N 417	O 439	S 9	0	0	0
1	D	308	Total 2408	C 1514	N 429	O 457	S 8	0	0	0

- Molecule 2 is GLYCEROL (three-letter code: GOL) (formula: C₃H₈O₃).



Mol	Chain	Residues	Atoms			ZeroOcc	AltConf
			Total	C	O		
2	A	1	Total 6	C 3	O 3	0	0
2	D	1	Total 6	C 3	O 3	0	0

- Molecule 3 is (4S)-2-METHYL-2,4-PENTANEDIOL (three-letter code: MPD) (formula: $C_6H_{14}O_2$).



Mol	Chain	Residues	Atoms			ZeroOcc	AltConf
			Total	C	O		
3	A	1	8	6	2	0	0

- Molecule 4 is CHLORIDE ION (three-letter code: CL) (formula: Cl).

Mol	Chain	Residues	Atoms		ZeroOcc	AltConf
			Total	Cl		
4	A	1	1	1	0	0

- Molecule 5 is (4R)-2-METHYLPENTANE-2,4-DIOL (three-letter code: MRD) (formula: $C_6H_{14}O_2$).



Mol	Chain	Residues	Atoms	ZeroOcc	AltConf
5	B	1	Total C O 8 6 2	0	0

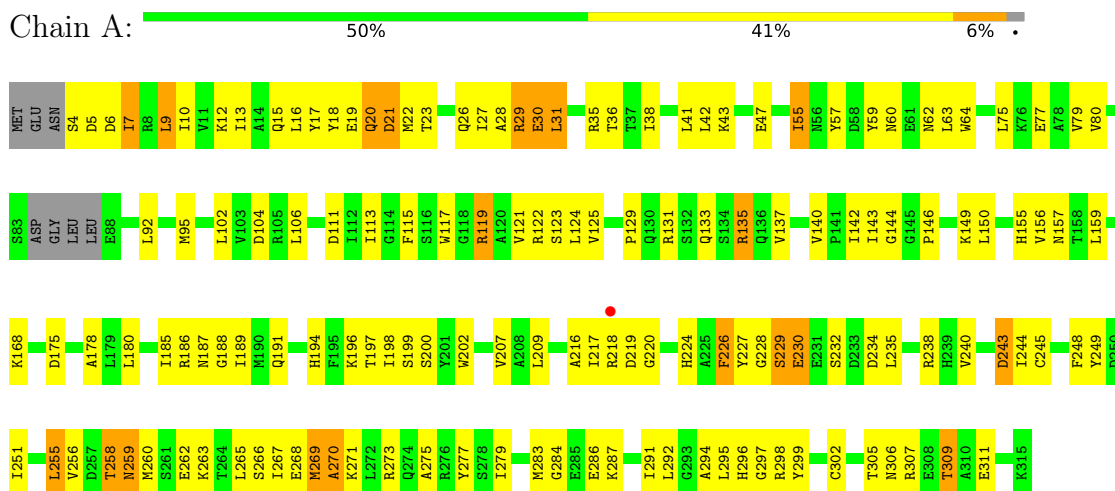
- Molecule 6 is water.

Mol	Chain	Residues	Atoms	ZeroOcc	AltConf
6	A	1	Total O 1 1	0	0

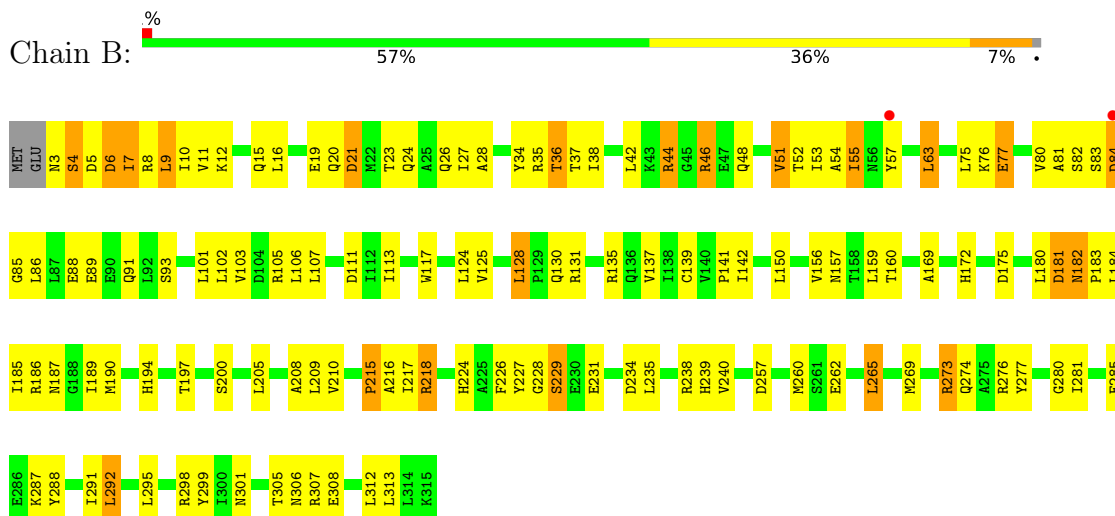
3 Residue-property plots [i](#)

These plots are drawn for all protein, RNA, DNA and oligosaccharide chains in the entry. The first graphic for a chain summarises the proportions of the various outlier classes displayed in the second graphic. The second graphic shows the sequence view annotated by issues in geometry and electron density. Residues are color-coded according to the number of geometric quality criteria for which they contain at least one outlier: green = 0, yellow = 1, orange = 2 and red = 3 or more. A red dot above a residue indicates a poor fit to the electron density ($RSRZ > 2$). Stretches of 2 or more consecutive residues without any outlier are shown as a green connector. Residues present in the sample, but not in the model, are shown in grey.

• Molecule 1: SORBITOL OPERON REGULATOR

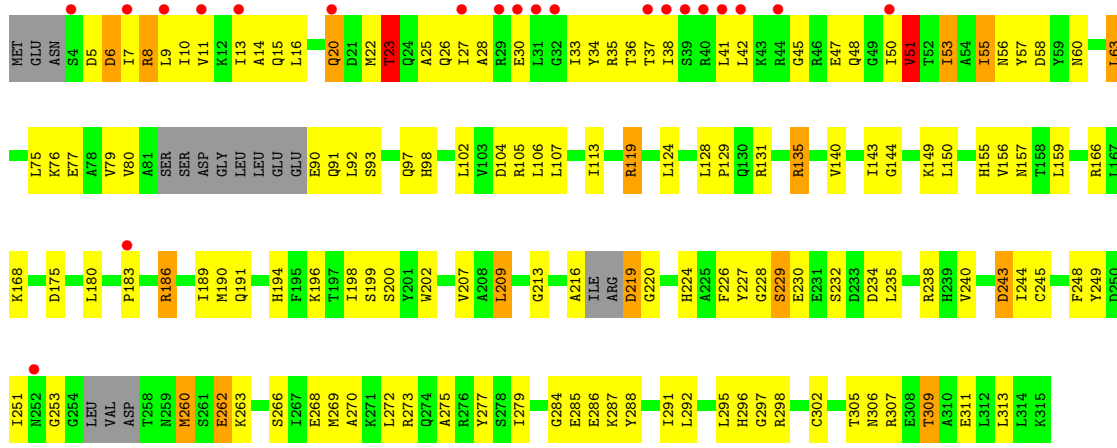


• Molecule 1: SORBITOL OPERON REGULATOR

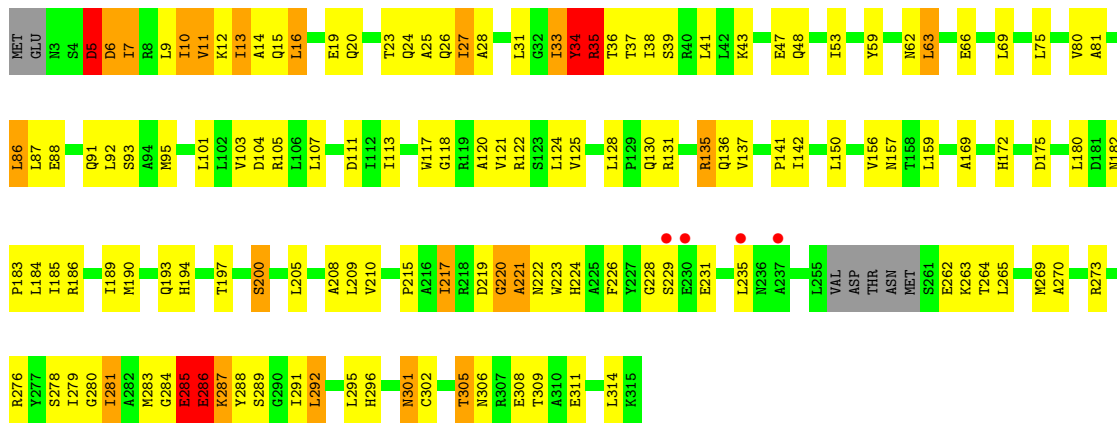


• Molecule 1: SORBITOL OPERON REGULATOR





• Molecule 1: SORBITOL OPERON REGULATOR



4 Data and refinement statistics

Property	Value	Source
Space group	P 21 21 21	Depositor
Cell constants a, b, c, α , β , γ	91.67Å 113.33Å 184.15Å 90.00° 90.00° 90.00°	Depositor
Resolution (Å)	38.67 – 3.20 38.67 – 3.19	Depositor EDS
% Data completeness (in resolution range)	99.8 (38.67-3.20) 99.6 (38.67-3.19)	Depositor EDS
R_{merge}	0.15	Depositor
R_{sym}	(Not available)	Depositor
$\langle I/\sigma(I) \rangle$ ¹	2.00 (at 3.18Å)	Xtrriage
Refinement program	PHENIX (PHENIX.REFINE)	Depositor
R, R_{free}	0.218 , 0.244 0.218 , (Not available)	Depositor DCC
R_{free} test set	No test flags present.	wwPDB-VP
Wilson B-factor (Å ²)	71.5	Xtrriage
Anisotropy	0.192	Xtrriage
Bulk solvent k_{sol} (e/Å ³), B_{sol} (Å ²)	0.33 , 67.7	EDS
L-test for twinning ²	$\langle L \rangle = 0.47$, $\langle L^2 \rangle = 0.30$	Xtrriage
Estimated twinning fraction	No twinning to report.	Xtrriage
F_o, F_c correlation	0.92	EDS
Total number of atoms	9626	wwPDB-VP
Average B, all atoms (Å ²)	75.0	wwPDB-VP

Xtrriage's analysis on translational NCS is as follows: *The largest off-origin peak in the Patterson function is 2.73% of the height of the origin peak. No significant pseudotranslation is detected.*

¹Intensities estimated from amplitudes.

²Theoretical values of $\langle |L| \rangle$, $\langle L^2 \rangle$ for acentric reflections are 0.5, 0.333 respectively for untwinned datasets, and 0.375, 0.2 for perfectly twinned datasets.

5 Model quality [i](#)

5.1 Standard geometry [i](#)

Bond lengths and bond angles in the following residue types are not validated in this section: CL, MPD, MRD, GOL

The Z score for a bond length (or angle) is the number of standard deviations the observed value is removed from the expected value. A bond length (or angle) with $|Z| > 5$ is considered an outlier worth inspection. RMSZ is the root-mean-square of all Z scores of the bond lengths (or angles).

Mol	Chain	Bond lengths		Bond angles	
		RMSZ	# Z >5	RMSZ	# Z >5
1	A	0.79	0/2447	0.87	8/3303 (0.2%)
1	B	0.74	0/2483	0.82	7/3353 (0.2%)
1	C	0.53	0/2374	0.76	6/3202 (0.2%)
1	D	0.71	0/2447	0.89	13/3303 (0.4%)
All	All	0.70	0/9751	0.84	34/13161 (0.3%)

Chiral center outliers are detected by calculating the chiral volume of a chiral center and verifying if the center is modelled as a planar moiety or with the opposite hand. A planarity outlier is detected by checking planarity of atoms in a peptide group, atoms in a mainchain group or atoms of a sidechain that are expected to be planar.

Mol	Chain	#Chirality outliers	#Planarity outliers
1	A	0	1

There are no bond length outliers.

All (34) bond angle outliers are listed below:

Mol	Chain	Res	Type	Atoms	Z	Observed(°)	Ideal(°)
1	A	135	ARG	NE-CZ-NH1	14.02	127.31	120.30
1	A	135	ARG	NE-CZ-NH2	-13.44	113.58	120.30
1	B	105	ARG	NE-CZ-NH1	-12.97	113.82	120.30
1	D	105	ARG	NE-CZ-NH2	-12.57	114.01	120.30
1	C	135	ARG	NE-CZ-NH1	-12.41	114.09	120.30
1	A	119	ARG	NE-CZ-NH2	-12.03	114.28	120.30
1	D	273	ARG	NE-CZ-NH2	-11.88	114.36	120.30
1	C	135	ARG	NE-CZ-NH2	11.67	126.14	120.30
1	C	119	ARG	NE-CZ-NH1	-11.43	114.59	120.30
1	B	105	ARG	NE-CZ-NH2	10.92	125.76	120.30
1	D	273	ARG	NE-CZ-NH1	10.85	125.72	120.30
1	D	105	ARG	NE-CZ-NH1	10.84	125.72	120.30

Continued on next page...

Continued from previous page...

Mol	Chain	Res	Type	Atoms	Z	Observed(°)	Ideal(°)
1	C	119	ARG	NE-CZ-NH2	10.76	125.68	120.30
1	A	119	ARG	NE-CZ-NH1	10.72	125.66	120.30
1	B	273	ARG	NE-CZ-NH2	10.69	125.64	120.30
1	B	273	ARG	NE-CZ-NH1	-9.77	115.41	120.30
1	D	10	ILE	CB-CA-C	-7.58	96.44	111.60
1	A	135	ARG	CD-NE-CZ	6.50	132.70	123.60
1	D	105	ARG	CD-NE-CZ	6.41	132.58	123.60
1	C	135	ARG	CD-NE-CZ	6.29	132.41	123.60
1	B	105	ARG	CD-NE-CZ	6.21	132.29	123.60
1	D	220	GLY	N-CA-C	-6.12	97.81	113.10
1	D	278	SER	N-CA-C	-6.05	94.66	111.00
1	A	270	ALA	N-CA-C	-5.97	94.87	111.00
1	B	273	ARG	CD-NE-CZ	5.88	131.84	123.60
1	A	269	MET	CA-CB-CG	-5.75	103.53	113.30
1	A	119	ARG	CD-NE-CZ	5.73	131.62	123.60
1	C	119	ARG	CD-NE-CZ	5.72	131.61	123.60
1	D	273	ARG	CD-NE-CZ	5.60	131.44	123.60
1	D	27	ILE	CB-CA-C	-5.60	100.40	111.60
1	D	35	ARG	N-CA-C	5.41	125.61	111.00
1	B	55	ILE	CB-CA-C	-5.37	100.86	111.60
1	D	5	ASP	CB-CG-OD2	5.18	122.96	118.30
1	D	286	GLU	N-CA-C	-5.06	97.33	111.00

There are no chirality outliers.

All (1) planarity outliers are listed below:

Mol	Chain	Res	Type	Group
1	A	29	ARG	Sidechain

5.2 Too-close contacts [\(i\)](#)

In the following table, the Non-H and H(model) columns list the number of non-hydrogen atoms and hydrogen atoms in the chain respectively. The H(added) column lists the number of hydrogen atoms added and optimized by MolProbity. The Clashes column lists the number of clashes within the asymmetric unit, whereas Symm-Clashes lists symmetry-related clashes.

Mol	Chain	Non-H	H(model)	H(added)	Clashes	Symm-Clashes
1	A	2408	0	2401	161	0
1	B	2443	0	2433	154	4
1	C	2337	0	2334	177	0
1	D	2408	0	2401	151	4

Continued on next page...

Continued from previous page...

Mol	Chain	Non-H	H(model)	H(added)	Clashes	Symm-Clashes
2	A	6	0	8	0	0
2	D	6	0	8	3	0
3	A	8	0	14	7	0
4	A	1	0	0	0	0
5	B	8	0	14	4	0
6	A	1	0	0	0	0
All	All	9626	0	9613	612	4

The all-atom clashscore is defined as the number of clashes found per 1000 atoms (including hydrogen atoms). The all-atom clashscore for this structure is 32.

All (612) close contacts within the same asymmetric unit are listed below, sorted by their clash magnitude.

Atom-1	Atom-2	Interatomic distance (Å)	Clash overlap (Å)
1:B:55:ILE:HA	1:C:51:VAL:CG2	1.32	1.51
1:B:4:SER:CB	1:B:5:ASP:HA	1.48	1.30
1:A:124:LEU:C	1:A:124:LEU:HD23	1.49	1.27
1:B:44:ARG:NH1	1:B:48:GLN:OE1	1.69	1.26
1:C:28:ALA:CB	1:C:35:ARG:HG2	1.67	1.23
1:D:33:ILE:CG2	1:D:38:ILE:HD11	1.69	1.21
1:D:33:ILE:HG21	1:D:38:ILE:CD1	1.69	1.20
1:C:47:GLU:HB3	1:C:48:GLN:OE1	1.31	1.20
1:B:19:GLU:OE1	1:C:57:TYR:OH	1.59	1.17
1:B:4:SER:HB3	1:B:5:ASP:CA	1.72	1.17
1:C:76:LYS:O	1:C:77:GLU:HG2	1.44	1.17
1:A:124:LEU:HD23	1:A:124:LEU:O	1.42	1.16
1:B:55:ILE:CA	1:C:51:VAL:HG23	1.75	1.16
1:C:284:GLY:H	1:C:309:THR:HG21	1.08	1.16
1:A:31:LEU:HD12	1:A:31:LEU:H	1.02	1.15
1:D:35:ARG:CA	1:D:38:ILE:HG12	1.74	1.15
1:B:55:ILE:CA	1:C:51:VAL:CG2	2.25	1.14
1:D:35:ARG:HA	1:D:38:ILE:CG1	1.77	1.12
1:A:284:GLY:H	1:A:309:THR:HG21	1.07	1.12
1:B:53:ILE:HG22	1:C:53:ILE:CB	1.82	1.10
1:B:53:ILE:HG22	1:C:53:ILE:HB	1.29	1.10
1:A:31:LEU:HD12	1:A:31:LEU:N	1.56	1.10
1:A:258:THR:O	1:A:259:ASN:HB3	1.47	1.09
1:B:53:ILE:HG22	1:C:53:ILE:CG2	1.80	1.09
1:A:31:LEU:H	1:A:31:LEU:CD1	1.62	1.08
1:C:53:ILE:HD13	1:C:53:ILE:O	1.53	1.08
1:D:33:ILE:HG22	1:D:35:ARG:H	1.19	1.08

Continued on next page...

Continued from previous page...

Atom-1	Atom-2	Interatomic distance (Å)	Clash overlap (Å)
1:B:84:ASP:HB3	1:B:307:ARG:NH2	1.68	1.07
1:A:227:TYR:CD2	1:A:260:MET:CE	2.37	1.06
1:C:28:ALA:HB2	1:C:35:ARG:HG2	1.31	1.06
1:D:284:GLY:O	1:D:285:GLU:HB3	1.56	1.06
1:D:186:ARG:NE	1:D:264:THR:O	1.89	1.05
1:C:186:ARG:NH1	1:C:190:MET:SD	2.30	1.04
1:C:76:LYS:C	1:C:77:GLU:HG2	1.76	1.02
1:A:121:VAL:HG13	1:A:209:LEU:CD2	1.89	1.01
1:B:53:ILE:HD12	1:B:53:ILE:O	1.60	1.01
1:D:33:ILE:HG21	1:D:38:ILE:HD11	1.32	1.01
1:B:54:ALA:O	1:C:51:VAL:HG22	1.61	1.00
1:D:186:ARG:HD2	1:D:263:LYS:C	1.82	1.00
1:C:28:ALA:CB	1:C:35:ARG:CG	2.41	0.99
1:A:124:LEU:C	1:A:124:LEU:CD2	2.30	0.98
1:A:227:TYR:CD2	1:A:260:MET:HE1	1.98	0.98
1:B:55:ILE:HA	1:C:51:VAL:HG22	1.42	0.97
1:A:227:TYR:CD2	1:A:260:MET:HE3	1.98	0.96
1:C:25:ALA:HA	1:C:35:ARG:CD	1.95	0.96
1:C:186:ARG:CG	1:C:186:ARG:HH11	1.79	0.95
1:B:53:ILE:CG2	1:C:53:ILE:HB	1.97	0.94
1:D:33:ILE:HG21	1:D:38:ILE:HD13	1.49	0.93
1:C:186:ARG:HH11	1:C:186:ARG:HG2	1.34	0.92
1:A:227:TYR:CE2	1:A:260:MET:HE1	2.04	0.91
1:C:22:MET:HG2	1:C:26:GLN:HB3	1.52	0.91
1:B:238:ARG:O	1:B:239:HIS:HB2	1.71	0.90
1:D:182:ASN:OD1	1:D:184:LEU:N	2.03	0.90
1:A:186:ARG:HD2	1:A:262:GLU:O	1.69	0.90
1:D:23:THR:O	1:D:27:ILE:HG13	1.72	0.90
1:D:182:ASN:OD1	1:D:183:PRO:N	2.05	0.90
1:D:215:PRO:HG3	1:D:223:TRP:CZ3	2.07	0.89
1:B:84:ASP:HB3	1:B:307:ARG:HH22	1.28	0.89
1:B:55:ILE:HA	1:C:51:VAL:HG23	0.88	0.88
1:D:23:THR:HG22	1:D:25:ALA:H	1.38	0.88
1:B:4:SER:CB	1:B:5:ASP:CA	2.36	0.88
1:A:306:ASN:OD1	1:A:309:THR:HG23	1.74	0.88
1:C:28:ALA:HB3	1:C:35:ARG:HG2	1.56	0.87
1:C:288:TYR:CE1	1:C:313:LEU:HD23	2.10	0.87
1:C:186:ARG:HD2	1:C:263:LYS:HA	1.54	0.87
1:B:285:GLU:HG2	1:B:312:LEU:CD2	2.05	0.86
1:A:186:ARG:HH11	1:A:187:ASN:ND2	1.73	0.86
1:C:285:GLU:HG3	1:C:286:GLU:OE2	1.76	0.86

Continued on next page...

Continued from previous page...

Atom-1	Atom-2	Interatomic distance (Å)	Clash overlap (Å)
1:C:155:HIS:HD2	1:C:157:ASN:H	1.20	0.85
1:D:118:GLY:HA3	2:D:1316:GOL:H31	1.57	0.85
1:A:146:PRO:HA	3:A:1317:MPD:HM1	1.58	0.85
1:A:284:GLY:N	1:A:309:THR:HG21	1.91	0.84
1:B:186:ARG:NH1	1:B:190:MET:SD	2.50	0.84
1:D:33:ILE:CG2	1:D:38:ILE:CD1	2.36	0.84
1:A:155:HIS:HD2	1:A:157:ASN:H	1.24	0.84
1:A:186:ARG:HH11	1:A:187:ASN:HD21	1.24	0.84
1:D:33:ILE:HG22	1:D:38:ILE:HD11	1.56	0.83
1:A:23:THR:CG2	1:A:26:GLN:HG3	2.09	0.83
1:C:25:ALA:HA	1:C:35:ARG:HD3	1.58	0.83
1:A:235:LEU:O	1:A:240:VAL:HG23	1.79	0.83
1:D:35:ARG:HA	1:D:38:ILE:HG12	0.88	0.82
1:C:186:ARG:CD	1:C:262:GLU:O	2.28	0.82
1:C:306:ASN:OD1	1:C:309:THR:HG23	1.78	0.82
1:A:30:GLU:HB3	1:A:31:LEU:HD12	1.62	0.82
1:C:47:GLU:CB	1:C:48:GLN:OE1	2.23	0.82
1:B:285:GLU:HG2	1:B:312:LEU:HD21	1.61	0.81
1:C:180:LEU:HD13	1:C:186:ARG:HB2	1.61	0.81
1:A:121:VAL:HG13	1:A:209:LEU:HD23	1.60	0.81
1:A:27:ILE:O	1:A:31:LEU:HD13	1.81	0.80
1:D:217:ILE:HG23	1:D:219:ASP:H	1.46	0.80
1:D:284:GLY:O	1:D:285:GLU:CB	2.30	0.80
1:C:51:VAL:CG1	1:C:51:VAL:O	2.30	0.80
1:C:284:GLY:N	1:C:309:THR:HG21	1.93	0.79
1:B:53:ILE:O	1:B:53:ILE:CD1	2.30	0.79
1:C:53:ILE:O	1:C:53:ILE:CD1	2.30	0.79
1:C:155:HIS:CD2	1:C:157:ASN:H	2.01	0.79
1:D:11:VAL:HG12	1:D:12:LYS:N	1.96	0.79
1:D:34:TYR:O	1:D:35:ARG:HB3	1.83	0.79
1:D:23:THR:HB	1:D:26:GLN:HG3	1.65	0.78
1:A:284:GLY:H	1:A:309:THR:CG2	1.94	0.78
1:C:25:ALA:HA	1:C:35:ARG:HD2	1.64	0.78
1:C:284:GLY:H	1:C:309:THR:CG2	1.94	0.78
1:B:85:GLY:C	1:B:86:LEU:HD12	2.03	0.78
1:A:216:ALA:HB3	1:A:286:GLU:O	1.84	0.78
1:C:307:ARG:HG3	1:C:307:ARG:HH11	1.48	0.78
1:D:135:ARG:O	1:D:136:GLN:HB2	1.83	0.78
1:D:33:ILE:HG22	1:D:35:ARG:N	1.99	0.77
1:C:10:ILE:HA	1:C:13:ILE:HG22	1.67	0.76
1:C:235:LEU:O	1:C:240:VAL:HG23	1.84	0.76

Continued on next page...

Continued from previous page...

Atom-1	Atom-2	Interatomic distance (Å)	Clash overlap (Å)
1:B:4:SER:HB3	1:B:5:ASP:HA	0.78	0.76
1:A:155:HIS:CD2	1:A:157:ASN:H	2.03	0.76
1:C:10:ILE:HG12	1:C:41:LEU:HB3	1.67	0.76
1:B:53:ILE:HG22	1:C:53:ILE:HG21	1.68	0.76
1:D:185:ILE:HD13	1:D:185:ILE:N	2.01	0.75
1:A:269:MET:O	1:A:273:ARG:HG3	1.85	0.75
1:A:307:ARG:HG3	1:A:307:ARG:HH11	1.50	0.75
1:D:23:THR:HG22	1:D:25:ALA:N	2.01	0.75
1:A:27:ILE:HG22	1:A:38:ILE:HD12	1.69	0.74
1:B:76:LYS:C	1:B:77:GLU:HG2	2.06	0.74
1:D:186:ARG:HD3	1:D:262:GLU:O	1.87	0.74
1:B:23:THR:H	1:B:26:GLN:HE21	1.33	0.74
1:C:51:VAL:O	1:C:51:VAL:HG12	1.87	0.73
1:D:16:LEU:HD12	1:D:27:ILE:HG23	1.68	0.73
1:C:104:ASP:OD2	1:C:129:PRO:HG2	1.89	0.73
1:C:224:HIS:CE1	1:C:229:SER:HB3	2.24	0.73
1:D:269:MET:HE2	1:D:269:MET:HA	1.69	0.73
1:A:175:ASP:H	1:A:194:HIS:HE1	1.36	0.73
1:C:5:ASP:O	1:C:8:ARG:HG3	1.89	0.73
1:D:35:ARG:CG	1:D:36:THR:N	2.52	0.72
1:A:121:VAL:HG13	1:A:209:LEU:HD21	1.72	0.72
1:D:186:ARG:HE	1:D:264:THR:C	1.91	0.71
1:A:104:ASP:OD2	1:A:129:PRO:HG2	1.90	0.71
1:D:5:ASP:C	1:D:7:ILE:H	1.92	0.71
1:B:103:VAL:HG21	1:B:124:LEU:HD21	1.72	0.71
1:A:292:LEU:HD22	1:A:296:HIS:CE1	2.26	0.71
1:C:90:GLU:OE2	1:C:90:GLU:HA	1.91	0.71
1:B:51:VAL:CG2	1:B:51:VAL:O	2.39	0.70
1:B:55:ILE:HG12	1:C:51:VAL:HG21	1.73	0.70
1:C:234:ASP:O	1:C:238:ARG:HG2	1.91	0.70
1:C:292:LEU:HD22	1:C:296:HIS:CE1	2.25	0.70
1:A:227:TYR:HD2	1:A:260:MET:HE3	1.54	0.70
1:A:259:ASN:OD1	1:A:259:ASN:C	2.30	0.70
1:A:224:HIS:CE1	1:A:229:SER:HB3	2.26	0.70
1:D:6:ASP:OD1	1:D:6:ASP:C	2.30	0.70
1:C:56:ASN:OD1	1:C:56:ASN:C	2.30	0.69
1:D:182:ASN:OD1	1:D:182:ASN:C	2.29	0.69
1:A:121:VAL:CG1	1:A:209:LEU:CD2	2.67	0.69
1:C:285:GLU:CG	1:C:286:GLU:OE2	2.39	0.69
1:D:103:VAL:HG21	1:D:124:LEU:HD21	1.74	0.69
1:A:117:TRP:NE1	3:A:1317:MPD:H12	2.07	0.69

Continued on next page...

Continued from previous page...

Atom-1	Atom-2	Interatomic distance (Å)	Clash overlap (Å)
1:D:186:ARG:HD2	1:D:263:LYS:O	1.90	0.69
1:B:224:HIS:O	1:B:228:GLY:HA2	1.92	0.69
1:C:240:VAL:HG11	1:C:248:PHE:HB3	1.75	0.69
1:A:19:GLU:C	1:A:20:GLN:OE1	2.31	0.69
1:A:23:THR:HG22	1:A:26:GLN:OE1	1.93	0.69
1:C:91:GLN:HE21	1:C:306:ASN:HD22	1.40	0.69
1:A:234:ASP:O	1:A:238:ARG:HG2	1.92	0.68
1:B:36:THR:HG22	1:B:37:THR:N	2.08	0.68
1:B:238:ARG:O	1:B:239:HIS:CB	2.36	0.68
1:A:258:THR:O	1:A:259:ASN:CB	2.30	0.68
1:C:227:TYR:CD2	1:C:260:MET:CE	2.76	0.68
1:D:180:LEU:HD11	1:D:265:LEU:CD1	2.22	0.68
1:A:23:THR:HG23	1:A:26:GLN:HG3	1.75	0.68
1:D:5:ASP:O	1:D:7:ILE:N	2.26	0.68
1:D:220:GLY:O	1:D:222:ASN:N	2.24	0.68
1:A:243:ASP:OD1	1:A:243:ASP:C	2.29	0.68
1:D:180:LEU:HD11	1:D:265:LEU:HD11	1.75	0.67
1:D:269:MET:HA	1:D:269:MET:CE	2.26	0.66
1:C:55:ILE:HG23	1:C:55:ILE:O	1.95	0.66
1:A:186:ARG:CD	1:A:262:GLU:O	2.42	0.66
1:C:28:ALA:HB3	1:C:35:ARG:CG	2.19	0.66
1:B:80:VAL:HA	1:B:305:THR:O	1.95	0.66
1:D:35:ARG:O	1:D:38:ILE:N	2.29	0.66
1:C:175:ASP:H	1:C:194:HIS:HE1	1.44	0.66
1:A:6:ASP:O	1:A:10:ILE:HG13	1.96	0.66
1:A:60:ASN:HB3	1:A:63:LEU:HB3	1.78	0.66
1:A:20:GLN:OE1	1:A:20:GLN:N	2.29	0.65
1:B:55:ILE:CG1	1:C:51:VAL:HG21	2.26	0.65
1:B:234:ASP:O	1:B:238:ARG:HD2	1.96	0.65
1:B:274:GLN:O	5:B:1316:MRD:H1C1	1.96	0.65
1:A:240:VAL:HG11	1:A:248:PHE:HB3	1.78	0.65
1:C:227:TYR:CD2	1:C:260:MET:HE1	2.31	0.65
1:A:217:ILE:HD11	1:A:287:LYS:HZ3	1.62	0.65
1:D:186:ARG:HD2	1:D:263:LYS:CA	2.26	0.65
1:A:155:HIS:HD2	1:A:157:ASN:N	1.95	0.64
1:B:301:ASN:N	1:B:301:ASN:HD22	1.94	0.64
1:B:23:THR:H	1:B:26:GLN:NE2	1.96	0.64
1:C:48:GLN:OE1	1:C:48:GLN:N	2.30	0.64
1:B:182:ASN:OD1	1:B:182:ASN:C	2.35	0.64
1:B:180:LEU:HD11	1:B:265:LEU:HD22	1.78	0.64
1:B:276:ARG:N	5:B:1316:MRD:H1C3	2.13	0.64

Continued on next page...

Continued from previous page...

Atom-1	Atom-2	Interatomic distance (Å)	Clash overlap (Å)
1:C:131:ARG:O	1:C:168:LYS:HD2	1.97	0.64
1:D:80:VAL:HA	1:D:305:THR:O	1.98	0.64
1:A:29:ARG:O	1:A:30:GLU:C	2.36	0.64
1:B:24:GLN:HA	1:B:27:ILE:HG22	1.80	0.64
1:B:141:PRO:HD3	1:B:172:HIS:O	1.97	0.64
1:C:180:LEU:HD21	1:C:189:ILE:HD12	1.80	0.64
1:C:307:ARG:HG3	1:C:307:ARG:NH1	2.13	0.64
1:D:301:ASN:HD22	1:D:301:ASN:N	1.95	0.63
1:A:117:TRP:CE2	3:A:1317:MPD:H12	2.33	0.63
1:C:131:ARG:HG3	1:C:135:ARG:HD3	1.79	0.63
1:A:143:ILE:HD12	1:A:266:SER:HB3	1.80	0.63
1:C:155:HIS:HD2	1:C:157:ASN:N	1.96	0.63
1:D:81:ALA:O	1:D:306:ASN:HA	1.99	0.63
1:B:11:VAL:O	1:B:15:GLN:HG2	1.98	0.63
1:D:215:PRO:HG3	1:D:223:TRP:HZ3	1.61	0.63
1:A:17:TYR:O	1:A:21:ASP:HA	1.98	0.63
1:C:76:LYS:O	1:C:77:GLU:CG	2.36	0.62
1:A:186:ARG:NH1	1:A:187:ASN:ND2	2.47	0.62
1:A:178:ALA:HB3	3:A:1317:MPD:H32	1.81	0.62
1:C:216:ALA:HB3	1:C:286:GLU:O	1.99	0.62
1:C:143:ILE:HD12	1:C:266:SER:HB3	1.82	0.62
1:B:54:ALA:C	1:C:51:VAL:HG22	2.20	0.62
1:B:57:TYR:HE2	1:C:15:GLN:HE21	1.47	0.62
1:A:29:ARG:HG2	1:A:30:GLU:N	2.12	0.62
1:C:155:HIS:HE1	1:D:175:ASP:OD1	1.83	0.62
1:A:180:LEU:HD21	1:A:189:ILE:HD12	1.80	0.61
1:C:16:LEU:HA	1:C:20:GLN:HG2	1.82	0.61
1:D:34:TYR:O	1:D:35:ARG:CB	2.40	0.61
1:A:30:GLU:HB3	1:A:31:LEU:CD1	2.29	0.61
1:B:107:LEU:HD23	1:B:137:VAL:HG11	1.83	0.61
1:D:186:ARG:CD	1:D:263:LYS:C	2.66	0.61
1:B:4:SER:HB2	1:B:5:ASP:HA	1.72	0.61
1:D:186:ARG:CZ	1:D:264:THR:O	2.48	0.61
1:C:50:ILE:O	1:C:50:ILE:HG22	2.00	0.61
1:A:55:ILE:HD13	1:A:57:TYR:CZ	2.36	0.61
1:A:15:GLN:O	1:A:19:GLU:HB2	2.00	0.60
1:B:183:PRO:O	1:B:187:ASN:OD1	2.19	0.60
1:B:276:ARG:H	5:B:1316:MRD:H1C3	1.66	0.60
1:D:107:LEU:HD23	1:D:137:VAL:HG11	1.81	0.60
1:C:124:LEU:HD22	1:C:209:LEU:HD21	1.81	0.60
1:D:141:PRO:HD3	1:D:172:HIS:O	2.01	0.60

Continued on next page...

Continued from previous page...

Atom-1	Atom-2	Interatomic distance (Å)	Clash overlap (Å)
1:A:244:ILE:HB	1:A:269:MET:HE1	1.83	0.60
1:A:307:ARG:HG3	1:A:307:ARG:NH1	2.16	0.60
1:D:23:THR:HG22	1:D:24:GLN:N	2.15	0.60
1:B:86:LEU:HB2	1:B:91:GLN:NE2	2.17	0.60
1:D:111:ASP:OD2	1:D:276:ARG:NH2	2.35	0.60
1:D:35:ARG:O	1:D:38:ILE:HB	2.03	0.59
1:A:122:ARG:HH11	1:A:122:ARG:HG2	1.67	0.59
1:B:285:GLU:HG3	1:B:308:GLU:OE2	2.02	0.59
1:D:135:ARG:O	1:D:136:GLN:CB	2.49	0.59
1:A:269:MET:O	1:A:270:ALA:C	2.38	0.59
1:B:51:VAL:O	1:B:51:VAL:HG23	2.03	0.59
1:B:7:ILE:C	1:B:7:ILE:HD12	2.22	0.59
1:A:20:GLN:O	1:A:21:ASP:C	2.40	0.59
1:B:76:LYS:O	1:B:77:GLU:HG2	2.03	0.59
1:C:47:GLU:C	1:C:48:GLN:OE1	2.42	0.58
1:D:175:ASP:H	1:D:194:HIS:HE1	1.51	0.58
1:B:180:LEU:HD22	1:B:185:ILE:HG22	1.85	0.58
1:C:15:GLN:HG2	1:C:16:LEU:HD12	1.86	0.58
1:C:240:VAL:CG1	1:C:248:PHE:HB3	2.33	0.58
1:A:186:ARG:O	1:A:186:ARG:HG2	1.99	0.58
1:D:35:ARG:C	1:D:38:ILE:HG12	2.23	0.58
1:A:283:MET:HE3	1:A:306:ASN:ND2	2.18	0.58
1:B:23:THR:O	1:B:27:ILE:HB	2.04	0.58
1:D:23:THR:CG2	1:D:24:GLN:N	2.67	0.58
1:B:217:ILE:C	1:B:218:ARG:HG2	2.24	0.58
1:A:267:ILE:HG12	1:A:268:GLU:O	2.04	0.57
1:D:9:LEU:O	1:D:13:ILE:HG23	2.03	0.57
1:A:79:VAL:CG1	1:A:102:LEU:HD22	2.34	0.57
1:C:106:LEU:HG	1:C:277:TYR:CE2	2.40	0.57
1:C:227:TYR:CD2	1:C:260:MET:HE2	2.38	0.57
1:B:3:ASN:C	1:B:3:ASN:OD1	2.43	0.57
1:B:240:VAL:HG23	1:B:240:VAL:O	2.04	0.57
1:C:76:LYS:C	1:C:77:GLU:CG	2.61	0.57
1:A:106:LEU:HG	1:A:277:TYR:CE2	2.40	0.57
1:C:10:ILE:HA	1:C:13:ILE:CG2	2.33	0.57
1:D:38:ILE:HD13	1:D:38:ILE:N	2.20	0.57
1:C:5:ASP:O	1:C:8:ARG:CG	2.53	0.57
1:C:186:ARG:HD2	1:C:262:GLU:O	2.04	0.57
1:B:197:THR:O	1:B:200:SER:HB3	2.05	0.56
1:A:62:ASN:O	1:A:63:LEU:C	2.43	0.56
1:A:258:THR:O	1:A:258:THR:HG23	1.98	0.56

Continued on next page...

Continued from previous page...

Atom-1	Atom-2	Interatomic distance (Å)	Clash overlap (Å)
1:C:79:VAL:CG1	1:C:102:LEU:HD22	2.35	0.56
1:D:122:ARG:HA	1:D:159:LEU:HD22	1.86	0.56
1:A:122:ARG:HB2	1:A:159:LEU:HD21	1.86	0.56
1:C:45:GLY:HA2	1:C:50:ILE:HD12	1.88	0.56
1:A:283:MET:CE	1:A:306:ASN:ND2	2.69	0.56
1:C:186:ARG:NH1	1:C:186:ARG:HG2	2.13	0.56
1:B:15:GLN:O	1:B:19:GLU:HB2	2.07	0.55
1:C:13:ILE:HG23	1:C:14:ALA:N	2.21	0.55
1:C:124:LEU:HD13	1:C:209:LEU:HD11	1.87	0.55
1:C:288:TYR:HE1	1:C:313:LEU:HD23	1.66	0.55
1:B:16:LEU:HD23	1:B:16:LEU:N	2.20	0.55
1:C:13:ILE:HD11	1:C:38:ILE:HG23	1.89	0.55
1:D:35:ARG:O	1:D:38:ILE:CB	2.55	0.55
1:D:104:ASP:O	1:D:135:ARG:NH2	2.40	0.55
1:A:240:VAL:CG1	1:A:248:PHE:HB3	2.36	0.55
1:B:287:LYS:O	1:B:291:ILE:HG13	2.07	0.55
1:D:11:VAL:O	1:D:14:ALA:HB3	2.06	0.54
1:A:122:ARG:HA	1:A:159:LEU:HD22	1.89	0.54
1:A:131:ARG:O	1:A:168:LYS:HD2	2.07	0.54
1:A:4:SER:OG	1:A:5:ASP:N	2.38	0.54
1:A:122:ARG:HG2	1:A:122:ARG:NH1	2.23	0.54
1:A:143:ILE:HG13	1:A:144:GLY:N	2.22	0.54
1:C:33:ILE:HG22	1:C:37:THR:OG1	2.08	0.54
1:B:175:ASP:H	1:B:194:HIS:HE1	1.56	0.54
1:C:287:LYS:O	1:C:291:ILE:HG13	2.06	0.54
1:B:301:ASN:N	1:B:301:ASN:ND2	2.55	0.54
1:C:10:ILE:CA	1:C:13:ILE:HG22	2.36	0.54
1:C:10:ILE:CG1	1:C:41:LEU:HD22	2.38	0.54
1:B:15:GLN:O	1:B:16:LEU:C	2.43	0.54
1:A:31:LEU:N	1:A:31:LEU:CD1	2.30	0.54
1:A:191:GLN:O	1:A:196:LYS:HE2	2.07	0.54
1:B:53:ILE:HA	1:C:53:ILE:HB	1.88	0.54
1:B:238:ARG:NH1	1:B:257:ASP:O	2.40	0.54
1:C:5:ASP:C	1:C:7:ILE:H	2.11	0.54
1:C:186:ARG:HD3	1:C:262:GLU:O	2.08	0.54
1:B:215:PRO:C	1:B:217:ILE:H	2.11	0.53
1:C:28:ALA:CB	1:C:35:ARG:HG3	2.36	0.53
1:D:15:GLN:O	1:D:19:GLU:HB2	2.07	0.53
1:D:193:GLN:HA	1:D:193:GLN:NE2	2.24	0.53
1:A:186:ARG:NH1	1:A:187:ASN:HD21	1.99	0.53
1:B:10:ILE:HD13	1:B:44:ARG:HD2	1.90	0.53

Continued on next page...

Continued from previous page...

Atom-1	Atom-2	Interatomic distance (Å)	Clash overlap (Å)
1:C:60:ASN:CG	1:C:63:LEU:HB2	2.28	0.53
1:D:5:ASP:C	1:D:7:ILE:N	2.61	0.53
1:B:34:TYR:HB2	1:B:37:THR:HB	1.89	0.53
1:D:269:MET:O	1:D:270:ALA:C	2.45	0.53
1:B:83:SER:HA	1:B:86:LEU:HD13	1.90	0.53
1:D:301:ASN:N	1:D:301:ASN:ND2	2.56	0.53
1:A:115:PHE:O	1:A:142:ILE:HG12	2.08	0.53
1:B:269:MET:HE3	1:B:299:TYR:CD2	2.43	0.53
1:A:13:ILE:HG22	1:A:42:LEU:HD21	1.90	0.53
1:B:53:ILE:HA	1:C:53:ILE:HA	1.91	0.53
1:B:107:LEU:HD21	1:B:113:ILE:HD11	1.90	0.53
1:C:227:TYR:CE2	1:C:260:MET:HE2	2.44	0.52
1:D:122:ARG:HB2	1:D:159:LEU:HD21	1.91	0.52
1:A:23:THR:HG22	1:A:26:GLN:HG3	1.87	0.52
1:C:124:LEU:CD2	1:C:209:LEU:HD21	2.40	0.52
1:D:35:ARG:HG2	1:D:36:THR:N	2.23	0.52
1:C:143:ILE:HG13	1:C:144:GLY:N	2.24	0.52
1:C:269:MET:O	1:C:270:ALA:C	2.48	0.52
1:C:28:ALA:HB2	1:C:35:ARG:CG	2.19	0.52
1:C:34:TYR:HB3	1:C:36:THR:HG22	1.91	0.52
1:D:43:LYS:O	1:D:47:GLU:HG3	2.10	0.52
1:A:95:MET:SD	1:A:283:MET:SD	3.08	0.52
1:D:287:LYS:O	1:D:291:ILE:HG13	2.09	0.52
1:A:283:MET:HE1	1:A:306:ASN:HD22	1.75	0.52
1:B:7:ILE:HA	1:B:10:ILE:HD12	1.92	0.51
1:C:183:PRO:HD3	1:C:263:LYS:HD3	1.91	0.51
1:C:219:ASP:OD1	1:C:220:GLY:N	2.43	0.51
1:D:137:VAL:HG22	1:D:169:ALA:HB2	1.92	0.51
1:B:276:ARG:HG2	1:B:277:TYR:CD2	2.45	0.51
1:D:186:ARG:NH2	1:D:264:THR:O	2.43	0.51
1:D:220:GLY:C	1:D:222:ASN:H	2.11	0.51
1:A:232:SER:HA	1:A:235:LEU:HG	1.92	0.51
1:B:137:VAL:CG2	1:B:169:ALA:HB2	2.41	0.51
1:C:186:ARG:NE	1:C:262:GLU:O	2.43	0.51
1:B:6:ASP:O	1:B:9:LEU:N	2.38	0.51
1:B:24:GLN:O	1:B:27:ILE:HG22	2.10	0.51
1:A:155:HIS:CD2	1:A:156:VAL:N	2.79	0.51
1:C:273:ARG:C	1:C:275:ALA:H	2.13	0.51
1:D:35:ARG:C	1:D:38:ILE:H	2.14	0.51
1:C:22:MET:HG2	1:C:26:GLN:CB	2.33	0.51
1:A:243:ASP:OD1	1:A:243:ASP:O	2.29	0.51

Continued on next page...

Continued from previous page...

Atom-1	Atom-2	Interatomic distance (Å)	Clash overlap (Å)
1:C:10:ILE:HG12	1:C:41:LEU:HD22	1.93	0.50
1:B:137:VAL:HG22	1:B:169:ALA:HB2	1.92	0.50
1:C:16:LEU:HA	1:C:20:GLN:CG	2.41	0.50
1:D:125:VAL:HA	1:D:128:LEU:HG	1.93	0.50
1:A:259:ASN:OD1	1:A:259:ASN:O	2.29	0.50
1:B:3:ASN:OD1	1:B:3:ASN:O	2.30	0.50
1:B:185:ILE:O	1:B:189:ILE:HG13	2.11	0.50
1:A:92:LEU:CD2	1:A:119:ARG:HG2	2.41	0.50
1:A:273:ARG:C	1:A:275:ALA:H	2.14	0.50
1:C:143:ILE:HD12	1:C:266:SER:CB	2.42	0.50
1:C:186:ARG:HD2	1:C:263:LYS:CA	2.35	0.50
1:A:16:LEU:HD23	1:A:22:MET:SD	2.52	0.50
1:A:18:TYR:CD1	1:D:53:ILE:HD13	2.47	0.50
1:A:43:LYS:O	1:A:47:GLU:HG3	2.11	0.50
1:A:9:LEU:HD12	1:A:13:ILE:HG13	1.94	0.50
1:A:227:TYR:CE2	1:A:260:MET:CE	2.79	0.50
1:B:46:ARG:HH11	1:B:46:ARG:HG2	1.77	0.50
1:B:3:ASN:O	1:B:4:SER:O	2.29	0.49
1:A:218:ARG:O	1:A:218:ARG:HG2	2.12	0.49
1:C:48:GLN:O	1:C:48:GLN:HG2	2.12	0.49
1:A:180:LEU:HD22	1:A:185:ILE:HG22	1.94	0.49
1:A:269:MET:C	1:A:271:LYS:N	2.58	0.49
1:B:88:GLU:HG3	1:B:89:GLU:N	2.28	0.49
1:C:58:ASP:O	1:C:58:ASP:OD2	2.30	0.49
1:B:46:ARG:HG2	1:B:46:ARG:NH1	2.27	0.49
1:B:139:CYS:HB3	1:B:160:THR:HG23	1.94	0.49
1:C:16:LEU:HG	1:C:20:GLN:HG3	1.95	0.49
1:D:33:ILE:CG2	1:D:38:ILE:HD13	2.27	0.49
1:D:120:ALA:HB3	2:D:1316:GOL:O3	2.12	0.49
1:B:23:THR:OG1	1:B:26:GLN:HG2	2.11	0.49
1:B:63:LEU:O	1:B:63:LEU:HD12	2.13	0.49
1:A:124:LEU:HD23	1:A:125:VAL:N	2.20	0.49
1:B:269:MET:CE	1:B:299:TYR:CD2	2.96	0.49
1:D:31:LEU:C	1:D:33:ILE:H	2.16	0.49
1:D:120:ALA:HB1	1:D:281:ILE:HG12	1.95	0.49
1:B:10:ILE:HD13	1:B:44:ARG:CD	2.42	0.49
1:D:103:VAL:CG2	1:D:124:LEU:HD21	2.43	0.49
1:C:5:ASP:C	1:C:7:ILE:N	2.66	0.49
1:B:12:LYS:O	1:B:15:GLN:HG3	2.13	0.48
1:C:232:SER:HA	1:C:235:LEU:HG	1.95	0.48
1:D:103:VAL:O	1:D:107:LEU:HD12	2.12	0.48

Continued on next page...

Continued from previous page...

Atom-1	Atom-2	Interatomic distance (Å)	Clash overlap (Å)
1:D:210:VAL:O	1:D:280:GLY:HA2	2.12	0.48
1:B:24:GLN:HA	1:B:27:ILE:CG2	2.42	0.48
1:A:29:ARG:O	1:A:30:GLU:O	2.30	0.48
1:A:258:THR:HG23	1:A:260:MET:H	1.79	0.48
1:A:279:ILE:HA	1:A:302:CYS:HB2	1.95	0.48
1:D:219:ASP:O	1:D:220:GLY:C	2.49	0.48
1:A:217:ILE:HD11	1:A:287:LYS:NZ	2.27	0.48
1:A:133:GLN:OE1	1:C:105:ARG:HD2	2.14	0.48
1:D:23:THR:O	1:D:27:ILE:CG1	2.56	0.48
1:D:217:ILE:HG21	1:D:221:ALA:O	2.14	0.48
1:D:224:HIS:O	1:D:228:GLY:HA2	2.14	0.48
1:D:308:GLU:HG2	1:D:309:THR:N	2.27	0.48
1:A:146:PRO:CA	3:A:1317:MPD:HM1	2.39	0.47
1:D:63:LEU:O	1:D:63:LEU:HD12	2.14	0.47
1:A:217:ILE:CD1	1:A:287:LYS:HZ3	2.27	0.47
1:B:55:ILE:O	1:B:55:ILE:HG22	2.08	0.47
1:B:103:VAL:O	1:B:107:LEU:HD12	2.14	0.47
1:D:279:ILE:HG12	1:D:302:CYS:HB2	1.97	0.47
1:A:297:GLY:O	1:A:298:ARG:HB2	2.14	0.47
1:B:103:VAL:HG21	1:B:209:LEU:HD11	1.96	0.47
1:B:103:VAL:CG2	1:B:124:LEU:HD21	2.43	0.47
1:C:25:ALA:CA	1:C:35:ARG:HD2	2.41	0.47
1:C:51:VAL:O	1:C:51:VAL:HG13	2.11	0.47
1:B:288:TYR:CE1	1:B:313:LEU:HD23	2.49	0.47
1:B:210:VAL:O	1:B:280:GLY:HA2	2.13	0.47
1:D:91:GLN:O	1:D:95:MET:HG3	2.14	0.47
1:A:75:LEU:HD21	1:A:295:LEU:CD2	2.45	0.47
1:D:185:ILE:O	1:D:189:ILE:HG13	2.14	0.47
1:B:117:TRP:CE3	1:B:150:LEU:HD11	2.49	0.47
1:C:199:SER:O	1:C:202:TRP:HB2	2.15	0.47
1:A:219:ASP:OD1	1:A:220:GLY:N	2.43	0.47
1:D:186:ARG:O	1:D:190:MET:HG3	2.15	0.47
1:B:20:GLN:O	1:B:21:ASP:HB2	2.15	0.46
1:A:180:LEU:HD11	1:A:265:LEU:HD12	1.96	0.46
1:B:57:TYR:CE2	1:C:15:GLN:NE2	2.83	0.46
1:A:59:TYR:CE1	1:D:7:ILE:CD1	2.98	0.46
1:B:51:VAL:O	1:B:51:VAL:HG22	2.14	0.46
1:D:10:ILE:O	1:D:10:ILE:HG22	2.09	0.46
1:B:55:ILE:CA	1:C:51:VAL:HG22	2.21	0.46
1:C:16:LEU:HD23	1:C:22:MET:HE2	1.98	0.46
1:D:33:ILE:C	1:D:35:ARG:H	2.19	0.46

Continued on next page...

Continued from previous page...

Atom-1	Atom-2	Interatomic distance (Å)	Clash overlap (Å)
1:D:117:TRP:CE3	1:D:150:LEU:HD11	2.51	0.46
1:D:137:VAL:CG2	1:D:169:ALA:HB2	2.45	0.46
1:A:117:TRP:NE1	3:A:1317:MPD:C1	2.78	0.46
1:B:273:ARG:HD2	1:B:298:ARG:O	2.15	0.46
1:C:279:ILE:HA	1:C:302:CYS:HB2	1.97	0.46
1:D:10:ILE:HG12	1:D:41:LEU:HD22	1.98	0.46
1:D:205:LEU:HD21	1:D:208:ALA:HB2	1.97	0.46
1:A:149:LYS:HB3	1:A:226:PHE:CE2	2.51	0.46
1:C:22:MET:O	1:C:27:ILE:HG13	2.16	0.46
1:C:273:ARG:C	1:C:275:ALA:N	2.70	0.46
1:C:288:TYR:CD1	1:C:313:LEU:HD23	2.51	0.46
1:D:130:GLN:C	1:D:130:GLN:HE21	2.19	0.46
1:B:6:ASP:OD1	1:B:6:ASP:N	2.48	0.46
1:B:227:TYR:HB3	1:B:260:MET:HE1	1.98	0.46
1:C:124:LEU:HD23	1:C:124:LEU:C	2.36	0.46
1:A:42:LEU:O	1:A:43:LYS:C	2.53	0.46
1:A:113:ILE:HA	1:A:207:VAL:O	2.16	0.46
1:C:269:MET:O	1:C:272:LEU:N	2.50	0.45
1:A:63:LEU:HA	1:A:63:LEU:HD12	1.70	0.45
1:B:186:ARG:CD	1:B:262:GLU:O	2.64	0.45
1:D:33:ILE:C	1:D:35:ARG:N	2.70	0.45
1:D:88:GLU:O	1:D:88:GLU:HG3	2.16	0.45
1:D:217:ILE:HG23	1:D:219:ASP:HB2	1.99	0.45
1:A:186:ARG:HD2	1:A:263:LYS:HA	1.98	0.45
1:B:182:ASN:OD1	1:B:184:LEU:N	2.49	0.45
1:D:87:LEU:HD12	1:D:87:LEU:HA	1.68	0.45
1:A:28:ALA:HB2	1:A:35:ARG:HA	1.99	0.45
1:A:180:LEU:HD11	1:A:265:LEU:CD1	2.47	0.45
1:B:44:ARG:HH11	1:B:48:GLN:CD	2.09	0.45
1:B:111:ASP:OD1	1:B:276:ARG:NH2	2.49	0.45
1:B:240:VAL:O	1:B:240:VAL:CG2	2.62	0.45
1:D:107:LEU:HD21	1:D:113:ILE:HD11	1.99	0.45
1:B:53:ILE:HG22	1:C:53:ILE:HG22	1.87	0.45
1:B:288:TYR:CZ	1:B:292:LEU:HD13	2.52	0.45
1:C:297:GLY:O	1:C:298:ARG:HB2	2.16	0.45
1:D:283:MET:HB2	1:D:283:MET:HE2	1.44	0.45
1:C:56:ASN:OD1	1:C:58:ASP:N	2.50	0.45
1:C:186:ARG:NH1	1:C:186:ARG:CG	2.50	0.45
1:A:80:VAL:HA	1:A:305:THR:O	2.16	0.45
1:C:243:ASP:HB2	1:C:248:PHE:CD1	2.52	0.45
1:D:92:LEU:HD12	1:D:283:MET:SD	2.57	0.45

Continued on next page...

Continued from previous page...

Atom-1	Atom-2	Interatomic distance (Å)	Clash overlap (Å)
1:D:156:VAL:HG13	1:D:157:ASN:N	2.31	0.45
1:A:31:LEU:H	1:A:31:LEU:HD13	1.68	0.45
1:B:44:ARG:NH1	1:B:48:GLN:CD	2.60	0.45
1:D:121:VAL:H	2:D:1316:GOL:HO3	1.63	0.45
1:D:156:VAL:CG1	1:D:157:ASN:N	2.79	0.45
1:C:25:ALA:CA	1:C:35:ARG:HD3	2.38	0.45
1:C:93:SER:O	1:C:97:GLN:HG3	2.17	0.45
1:D:69:LEU:HD23	1:D:314:LEU:HD21	1.99	0.45
1:B:28:ALA:HB2	1:B:38:ILE:HG13	1.98	0.45
1:B:137:VAL:O	1:B:169:ALA:HB1	2.17	0.45
1:D:186:ARG:HD2	1:D:263:LYS:HA	1.98	0.45
1:A:244:ILE:O	1:A:245:CYS:C	2.50	0.44
1:D:34:TYR:O	1:D:36:THR:N	2.50	0.44
1:A:7:ILE:HD13	1:D:59:TYR:HD2	1.82	0.44
1:B:102:LEU:O	1:B:106:LEU:HD13	2.17	0.44
1:B:130:GLN:NE2	1:B:131:ARG:O	2.50	0.44
1:D:182:ASN:OD1	1:D:183:PRO:CD	2.64	0.44
1:A:199:SER:O	1:A:202:TRP:HB2	2.17	0.44
1:D:231:GLU:O	1:D:235:LEU:HG	2.17	0.44
1:D:35:ARG:C	1:D:37:THR:N	2.65	0.44
1:A:133:GLN:OE1	1:C:105:ARG:CD	2.66	0.44
1:A:155:HIS:HD2	1:A:156:VAL:N	2.14	0.44
1:B:42:LEU:HD23	1:B:42:LEU:HA	1.69	0.44
1:B:107:LEU:CD2	1:B:113:ILE:HD11	2.47	0.44
1:C:244:ILE:HG13	1:C:249:TYR:HE1	1.82	0.44
1:D:33:ILE:O	1:D:35:ARG:N	2.50	0.44
1:A:256:VAL:O	1:A:256:VAL:HG12	2.16	0.44
1:B:34:TYR:O	1:B:38:ILE:HG12	2.17	0.44
1:C:10:ILE:HG12	1:C:41:LEU:CB	2.42	0.44
1:A:64:TRP:CZ2	1:D:48:GLN:HA	2.53	0.44
1:B:55:ILE:CG1	1:C:51:VAL:CG2	2.95	0.44
1:C:107:LEU:HD23	1:C:107:LEU:HA	1.80	0.44
1:A:197:THR:O	1:A:200:SER:HB3	2.18	0.44
1:A:224:HIS:O	1:A:228:GLY:HA2	2.18	0.44
1:C:113:ILE:HA	1:C:207:VAL:O	2.18	0.44
1:C:186:ARG:HH11	1:C:186:ARG:HG3	1.70	0.44
1:D:130:GLN:C	1:D:130:GLN:NE2	2.71	0.44
1:D:197:THR:O	1:D:200:SER:HB3	2.17	0.44
1:A:23:THR:HG22	1:A:26:GLN:CG	2.48	0.44
1:A:59:TYR:HE1	1:D:7:ILE:HD11	1.82	0.44
1:A:188:GLY:HA3	1:B:185:ILE:HD11	2.00	0.44

Continued on next page...

Continued from previous page...

Atom-1	Atom-2	Interatomic distance (Å)	Clash overlap (Å)
1:A:156:VAL:HG13	1:A:157:ASN:N	2.32	0.43
1:B:156:VAL:HG13	1:B:157:ASN:N	2.32	0.43
1:C:227:TYR:HD2	1:C:260:MET:HE1	1.79	0.43
1:C:243:ASP:CB	1:C:248:PHE:CD1	3.01	0.43
1:C:13:ILE:CG2	1:C:14:ALA:N	2.80	0.43
1:C:80:VAL:HA	1:C:305:THR:O	2.18	0.43
1:D:130:GLN:NE2	1:D:131:ARG:O	2.51	0.43
1:D:35:ARG:O	1:D:38:ILE:HG12	2.18	0.43
1:B:131:ARG:HG3	1:B:135:ARG:HH21	1.82	0.43
1:C:75:LEU:HD21	1:C:295:LEU:CD2	2.48	0.43
1:C:213:GLY:HA3	1:C:243:ASP:OD1	2.19	0.43
1:A:273:ARG:C	1:A:275:ALA:N	2.72	0.43
1:B:156:VAL:CG1	1:B:157:ASN:N	2.81	0.43
1:B:269:MET:HE3	1:B:299:TYR:CG	2.53	0.43
1:D:220:GLY:C	1:D:222:ASN:N	2.70	0.43
1:A:143:ILE:HD12	1:A:266:SER:CB	2.46	0.43
1:B:15:GLN:HB2	1:B:19:GLU:OE2	2.18	0.43
1:C:23:THR:HG22	1:C:26:GLN:OE1	2.18	0.43
1:C:48:GLN:O	1:C:50:ILE:HG13	2.18	0.43
1:C:228:GLY:O	1:C:230:GLU:N	2.51	0.43
1:A:149:LYS:O	1:A:150:LEU:HD23	2.18	0.43
1:C:92:LEU:CD2	1:C:119:ARG:HG2	2.49	0.43
1:D:86:LEU:HD23	1:D:86:LEU:O	2.19	0.43
1:B:53:ILE:CD1	1:B:53:ILE:C	2.85	0.43
1:B:81:ALA:O	1:B:306:ASN:HA	2.18	0.43
5:B:1316:MRD:H1C2	5:B:1316:MRD:H4	1.70	0.43
1:D:101:LEU:HD23	1:D:101:LEU:HA	1.85	0.43
1:D:142:ILE:HD11	1:D:210:VAL:HG23	2.00	0.43
1:B:3:ASN:C	1:B:4:SER:O	2.56	0.43
1:D:75:LEU:HD21	1:D:295:LEU:HD22	2.01	0.43
1:C:155:HIS:CD2	1:C:156:VAL:N	2.87	0.43
1:D:28:ALA:CB	1:D:35:ARG:HB2	2.49	0.43
1:A:92:LEU:HD23	1:A:119:ARG:HG2	2.01	0.42
1:A:283:MET:CE	1:A:306:ASN:HD22	2.31	0.42
1:B:8:ARG:HD2	1:B:8:ARG:HA	1.85	0.42
1:B:142:ILE:HD11	1:B:210:VAL:HG23	2.01	0.42
1:B:312:LEU:HD12	1:B:312:LEU:HA	1.58	0.42
1:C:6:ASP:O	1:C:9:LEU:HB2	2.20	0.42
1:C:128:LEU:HA	1:C:129:PRO:HD3	1.81	0.42
1:C:166:ARG:HH11	1:C:166:ARG:HG3	1.85	0.42
1:D:285:GLU:HG3	1:D:286:GLU:N	2.11	0.42

Continued on next page...

Continued from previous page...

Atom-1	Atom-2	Interatomic distance (Å)	Clash overlap (Å)
1:A:287:LYS:O	1:A:291:ILE:HG13	2.20	0.42
1:B:181:ASP:OD2	1:B:181:ASP:N	2.52	0.42
1:B:205:LEU:HD21	1:B:208:ALA:HB2	2.00	0.42
1:C:33:ILE:CG2	1:C:37:THR:OG1	2.68	0.42
1:D:62:ASN:O	1:D:66:GLU:HG3	2.20	0.42
1:A:238:ARG:HG2	1:A:238:ARG:H	1.74	0.42
1:B:20:GLN:O	1:B:21:ASP:CB	2.65	0.42
1:B:53:ILE:CG2	1:C:53:ILE:HG21	2.45	0.42
1:B:215:PRO:O	1:B:217:ILE:N	2.53	0.42
1:C:149:LYS:O	1:C:150:LEU:HD23	2.19	0.42
1:A:117:TRP:HE1	3:A:1317:MPD:C1	2.33	0.42
1:A:199:SER:HA	1:A:202:TRP:CD2	2.54	0.42
1:B:46:ARG:HH12	1:B:53:ILE:HD11	1.85	0.42
1:D:103:VAL:HG21	1:D:209:LEU:HD11	2.01	0.42
1:D:292:LEU:HD23	1:D:296:HIS:CE1	2.54	0.42
1:A:111:ASP:HB2	1:A:137:VAL:HG12	2.01	0.41
1:A:175:ASP:H	1:A:194:HIS:CE1	2.27	0.41
1:A:180:LEU:CD2	1:A:185:ILE:HG22	2.50	0.41
1:A:229:SER:O	1:A:230:GLU:C	2.57	0.41
1:B:182:ASN:HA	1:B:183:PRO:HD3	1.70	0.41
1:C:260:MET:H	1:C:260:MET:HG2	1.28	0.41
1:A:41:LEU:HA	1:A:41:LEU:HD23	1.76	0.41
1:B:215:PRO:C	1:B:217:ILE:N	2.73	0.41
1:C:244:ILE:O	1:C:245:CYS:C	2.56	0.41
1:D:288:TYR:O	1:D:289:SER:C	2.59	0.41
1:A:104:ASP:OD1	1:A:135:ARG:NH2	2.52	0.41
1:B:10:ILE:H	1:B:10:ILE:HG13	1.69	0.41
1:C:199:SER:HA	1:C:202:TRP:CD2	2.55	0.41
1:C:268:GLU:O	1:C:269:MET:C	2.57	0.41
1:D:217:ILE:HG23	1:D:219:ASP:N	2.25	0.41
1:D:137:VAL:O	1:D:169:ALA:HB1	2.20	0.41
1:B:44:ARG:HH11	1:B:44:ARG:CG	2.34	0.41
1:D:16:LEU:N	1:D:16:LEU:HD23	2.36	0.41
1:A:9:LEU:HA	1:A:12:LYS:HB3	2.01	0.41
1:A:255:LEU:HD12	1:A:299:TYR:OH	2.20	0.41
1:D:210:VAL:O	1:D:210:VAL:HG12	2.21	0.41
1:B:75:LEU:HD21	1:B:295:LEU:HD22	2.02	0.41
1:B:231:GLU:O	1:B:235:LEU:HG	2.20	0.41
1:D:13:ILE:HD13	1:D:13:ILE:HG21	1.76	0.41
1:C:191:GLN:O	1:C:196:LYS:HE2	2.20	0.41
1:B:101:LEU:HA	1:B:101:LEU:HD23	1.82	0.41

Continued on next page...

Continued from previous page...

Atom-1	Atom-2	Interatomic distance (Å)	Clash overlap (Å)
1:B:125:VAL:HA	1:B:128:LEU:HD22	2.02	0.41
1:C:53:ILE:O	1:C:53:ILE:CG1	2.61	0.41
1:C:13:ILE:HG23	1:C:42:LEU:CD2	2.51	0.41
1:C:198:ILE:HD13	1:C:198:ILE:HA	1.88	0.41
1:D:180:LEU:HD13	1:D:186:ARG:HA	2.03	0.41
1:A:249:TYR:OH	1:A:294:ALA:HB2	2.20	0.40
1:B:228:GLY:O	1:B:229:SER:C	2.59	0.40
1:A:198:ILE:HD13	1:A:198:ILE:HA	1.93	0.40
1:D:292:LEU:CD2	1:D:296:HIS:CE1	3.04	0.40
1:C:260:MET:HB2	1:C:260:MET:HE3	2.01	0.40
1:D:186:ARG:CD	1:D:263:LYS:CA	2.97	0.40

All (4) symmetry-related close contacts are listed below. The label for Atom-2 includes the symmetry operator and encoded unit-cell translations to be applied.

Atom-1	Atom-2	Interatomic distance (Å)	Clash overlap (Å)
1:B:34:TYR:CG	1:D:311:GLU:OE1[1_655]	1.66	0.54
1:B:34:TYR:CB	1:D:311:GLU:OE1[1_655]	1.95	0.25
1:B:35:ARG:N	1:D:311:GLU:OE2[1_655]	2.00	0.20
1:B:34:TYR:CD1	1:D:311:GLU:OE1[1_655]	2.15	0.05

5.3 Torsion angles [i](#)

5.3.1 Protein backbone [i](#)

In the following table, the Percentiles column shows the percent Ramachandran outliers of the chain as a percentile score with respect to all X-ray entries followed by that with respect to entries of similar resolution.

The Analysed column shows the number of residues for which the backbone conformation was analysed, and the total number of residues.

Mol	Chain	Analysed	Favoured	Allowed	Outliers	Percentiles
1	A	304/315 (96%)	282 (93%)	19 (6%)	3 (1%)	15 54
1	B	311/315 (99%)	288 (93%)	18 (6%)	5 (2%)	9 43
1	C	291/315 (92%)	270 (93%)	17 (6%)	4 (1%)	11 46
1	D	304/315 (96%)	281 (92%)	17 (6%)	6 (2%)	7 38
All	All	1210/1260 (96%)	1121 (93%)	71 (6%)	18 (2%)	10 44

All (18) Ramachandran outliers are listed below:

Mol	Chain	Res	Type
1	A	229	SER
1	B	4	SER
1	B	229	SER
1	C	229	SER
1	D	6	ASP
1	D	229	SER
1	D	34	TYR
1	D	285	GLU
1	C	51	VAL
1	D	221	ALA
1	A	21	ASP
1	A	30	GLU
1	B	216	ALA
1	D	5	ASP
1	B	84	ASP
1	C	23	THR
1	B	215	PRO
1	C	253	GLY

5.3.2 Protein sidechains [i](#)

In the following table, the Percentiles column shows the percent sidechain outliers of the chain as a percentile score with respect to all X-ray entries followed by that with respect to entries of similar resolution.

The Analysed column shows the number of residues for which the sidechain conformation was analysed, and the total number of residues.

Mol	Chain	Analysed	Rotameric	Outliers	Percentiles	
1	A	253/262 (97%)	235 (93%)	18 (7%)	14	47
1	B	257/262 (98%)	235 (91%)	22 (9%)	10	38
1	C	245/262 (94%)	221 (90%)	24 (10%)	8	31
1	D	253/262 (97%)	230 (91%)	23 (9%)	9	34
All	All	1008/1048 (96%)	921 (91%)	87 (9%)	10	38

All (87) residues with a non-rotameric sidechain are listed below:

Mol	Chain	Res	Type
1	A	7	ILE
1	A	9	LEU

Continued on next page...

Continued from previous page...

Mol	Chain	Res	Type
1	A	20	GLN
1	A	31	LEU
1	A	36	THR
1	A	55	ILE
1	A	77	GLU
1	A	123	SER
1	A	140	VAL
1	A	226	PHE
1	A	230	GLU
1	A	243	ASP
1	A	251	ILE
1	A	255	LEU
1	A	258	THR
1	A	259	ASN
1	A	309	THR
1	A	311	GLU
1	B	6	ASP
1	B	7	ILE
1	B	9	LEU
1	B	21	ASP
1	B	36	THR
1	B	44	ARG
1	B	46	ARG
1	B	51	VAL
1	B	52	THR
1	B	63	LEU
1	B	77	GLU
1	B	82	SER
1	B	93	SER
1	B	128	LEU
1	B	159	LEU
1	B	181	ASP
1	B	182	ASN
1	B	218	ARG
1	B	226	PHE
1	B	265	LEU
1	B	281	ILE
1	B	292	LEU
1	C	6	ASP
1	C	8	ARG
1	C	11	VAL
1	C	20	GLN

Continued on next page...

Continued from previous page...

Mol	Chain	Res	Type
1	C	23	THR
1	C	30	GLU
1	C	51	VAL
1	C	53	ILE
1	C	55	ILE
1	C	63	LEU
1	C	98	HIS
1	C	140	VAL
1	C	159	LEU
1	C	186	ARG
1	C	200	SER
1	C	209	LEU
1	C	219	ASP
1	C	226	PHE
1	C	243	ASP
1	C	251	ILE
1	C	260	MET
1	C	262	GLU
1	C	309	THR
1	C	311	GLU
1	D	7	ILE
1	D	11	VAL
1	D	13	ILE
1	D	16	LEU
1	D	20	GLN
1	D	33	ILE
1	D	34	TYR
1	D	35	ARG
1	D	39	SER
1	D	63	LEU
1	D	86	LEU
1	D	93	SER
1	D	135	ARG
1	D	200	SER
1	D	217	ILE
1	D	226	PHE
1	D	281	ILE
1	D	285	GLU
1	D	286	GLU
1	D	287	LYS
1	D	292	LEU
1	D	301	ASN

Continued on next page...

Continued from previous page...

Mol	Chain	Res	Type
1	D	305	THR

Sometimes sidechains can be flipped to improve hydrogen bonding and reduce clashes. All (26) such sidechains are listed below:

Mol	Chain	Res	Type
1	A	15	GLN
1	A	155	HIS
1	A	187	ASN
1	A	194	HIS
1	A	224	HIS
1	B	26	GLN
1	B	97	GLN
1	B	127	ASN
1	B	130	GLN
1	B	187	ASN
1	B	194	HIS
1	B	252	ASN
1	B	259	ASN
1	B	301	ASN
1	C	15	GLN
1	C	91	GLN
1	C	133	GLN
1	C	155	HIS
1	C	194	HIS
1	C	224	HIS
1	D	48	GLN
1	D	130	GLN
1	D	193	GLN
1	D	194	HIS
1	D	252	ASN
1	D	301	ASN

5.3.3 RNA [i](#)

There are no RNA molecules in this entry.

5.4 Non-standard residues in protein, DNA, RNA chains [i](#)

There are no non-standard protein/DNA/RNA residues in this entry.

5.5 Carbohydrates [i](#)

There are no monosaccharides in this entry.

5.6 Ligand geometry [i](#)

Of 5 ligands modelled in this entry, 1 is monoatomic - leaving 4 for Mogul analysis.

In the following table, the Counts columns list the number of bonds (or angles) for which Mogul statistics could be retrieved, the number of bonds (or angles) that are observed in the model and the number of bonds (or angles) that are defined in the Chemical Component Dictionary. The Link column lists molecule types, if any, to which the group is linked. The Z score for a bond length (or angle) is the number of standard deviations the observed value is removed from the expected value. A bond length (or angle) with $|Z| > 2$ is considered an outlier worth inspection. RMSZ is the root-mean-square of all Z scores of the bond lengths (or angles).

Mol	Type	Chain	Res	Link	Bond lengths			Bond angles		
					Counts	RMSZ	# Z > 2	Counts	RMSZ	# Z > 2
2	GOL	D	1316	-	5,5,5	0.33	0	5,5,5	0.31	0
3	MPD	A	1317	-	7,7,7	0.48	0	9,10,10	0.67	0
5	MRD	B	1316	-	7,7,7	0.32	0	9,10,10	0.29	0
2	GOL	A	1316	-	5,5,5	0.42	0	5,5,5	0.35	0

In the following table, the Chirals column lists the number of chiral outliers, the number of chiral centers analysed, the number of these observed in the model and the number defined in the Chemical Component Dictionary. Similar counts are reported in the Torsion and Rings columns. '-' means no outliers of that kind were identified.

Mol	Type	Chain	Res	Link	Chirals	Torsions	Rings
2	GOL	D	1316	-	-	2/4/4/4	-
3	MPD	A	1317	-	-	5/5/5/5	-
5	MRD	B	1316	-	-	2/5/5/5	-
2	GOL	A	1316	-	-	0/4/4/4	-

There are no bond length outliers.

There are no bond angle outliers.

There are no chirality outliers.

All (9) torsion outliers are listed below:

Mol	Chain	Res	Type	Atoms
2	D	1316	GOL	O1-C1-C2-C3
3	A	1317	MPD	O2-C2-C3-C4

Continued on next page...

Continued from previous page...

Mol	Chain	Res	Type	Atoms
3	A	1317	MPD	CM-C2-C3-C4
3	A	1317	MPD	C2-C3-C4-O4
3	A	1317	MPD	C2-C3-C4-C5
2	D	1316	GOL	O1-C1-C2-O2
5	B	1316	MRD	C2-C3-C4-C5
3	A	1317	MPD	C1-C2-C3-C4
5	B	1316	MRD	C2-C3-C4-O4

There are no ring outliers.

3 monomers are involved in 14 short contacts:

Mol	Chain	Res	Type	Clashes	Symm-Clashes
2	D	1316	GOL	3	0
3	A	1317	MPD	7	0
5	B	1316	MRD	4	0

5.7 Other polymers [i](#)

There are no such residues in this entry.

5.8 Polymer linkage issues [i](#)

There are no chain breaks in this entry.

6 Fit of model and data

6.1 Protein, DNA and RNA chains

In the following table, the column labelled ‘#RSRZ> 2’ contains the number (and percentage) of RSRZ outliers, followed by percent RSRZ outliers for the chain as percentile scores relative to all X-ray entries and entries of similar resolution. The OWAB column contains the minimum, median, 95th percentile and maximum values of the occupancy-weighted average B-factor per residue. The column labelled ‘Q< 0.9’ lists the number of (and percentage) of residues with an average occupancy less than 0.9.

Mol	Chain	Analysed	<RSRZ>	#RSRZ>2	OWAB(Å ²)	Q<0.9
1	A	308/315 (97%)	-0.28	1 (0%) 94 92	22, 47, 91, 149	0
1	B	313/315 (99%)	-0.19	2 (0%) 89 83	17, 57, 116, 185	0
1	C	299/315 (94%)	0.30	21 (7%) 16 9	43, 89, 184, 238	0
1	D	308/315 (97%)	0.13	4 (1%) 77 65	47, 79, 139, 200	0
All	All	1228/1260 (97%)	-0.01	28 (2%) 60 47	17, 70, 142, 238	0

All (28) RSRZ outliers are listed below:

Mol	Chain	Res	Type	RSRZ
1	C	32	GLY	7.2
1	C	41	LEU	6.6
1	C	11	VAL	5.2
1	C	27	ILE	4.8
1	C	40	ARG	4.5
1	C	50	ILE	4.0
1	C	31	LEU	3.8
1	C	37	THR	3.5
1	C	13	ILE	3.3
1	C	29	ARG	3.3
1	C	20	GLN	2.9
1	C	7	ILE	2.9
1	C	44	ARG	2.8
1	C	42	LEU	2.8
1	C	4	SER	2.8
1	C	38	ILE	2.7
1	A	218	ARG	2.6
1	C	9	LEU	2.5
1	D	229	SER	2.5
1	C	39	SER	2.4
1	C	252	ASN	2.4

Continued on next page...

Continued from previous page...

Mol	Chain	Res	Type	RSRZ
1	D	237	ALA	2.4
1	B	84	ASP	2.3
1	D	235	LEU	2.3
1	B	57	TYR	2.2
1	C	183	PRO	2.1
1	D	230	GLU	2.1
1	C	30	GLU	2.0

6.2 Non-standard residues in protein, DNA, RNA chains [i](#)

There are no non-standard protein/DNA/RNA residues in this entry.

6.3 Carbohydrates [i](#)

There are no monosaccharides in this entry.

6.4 Ligands [i](#)

In the following table, the Atoms column lists the number of modelled atoms in the group and the number defined in the chemical component dictionary. The B-factors column lists the minimum, median, 95th percentile and maximum values of B factors of atoms in the group. The column labelled 'Q< 0.9' lists the number of atoms with occupancy less than 0.9.

Mol	Type	Chain	Res	Atoms	RSCC	RSR	B-factors(\AA^2)	Q<0.9
4	CL	A	1318	1/1	0.71	0.22	69,69,69,69	0
2	GOL	D	1316	6/6	0.82	0.30	88,88,88,88	0
5	MRD	B	1316	8/8	0.88	0.32	90,90,90,90	0
3	MPD	A	1317	8/8	0.94	0.29	61,61,61,61	0
2	GOL	A	1316	6/6	0.97	0.28	54,54,54,54	0

6.5 Other polymers [i](#)

There are no such residues in this entry.