



# Full wwPDB X-ray Structure Validation Report ⓘ

Dec 2, 2023 – 10:34 pm GMT

PDB ID : 1W1M  
Title : STRUCTURE OF THE OCTAMERIC FLAVOENZYME VANILLYL-ALCOHOL OXIDASE: Glu502Gly Mutant  
Authors : Van Den Heuvel, R.H.  
Deposited on : 2004-06-22  
Resolution : 3.00 Å(reported)

This is a Full wwPDB X-ray Structure Validation Report for a publicly released PDB entry.

We welcome your comments at [validation@mail.wwpdb.org](mailto:validation@mail.wwpdb.org)

A user guide is available at

<https://www.wwpdb.org/validation/2017/XrayValidationReportHelp>

with specific help available everywhere you see the ⓘ symbol.

The types of validation reports are described at

<http://www.wwpdb.org/validation/2017/FAQs#types>.

---

The following versions of software and data (see [references ⓘ](#)) were used in the production of this report:

MolProbity : 4.02b-467  
Mogul : 1.8.4, CSD as541be (2020)  
Xtriage (Phenix) : 1.13  
EDS : 2.36  
buster-report : 1.1.7 (2018)  
Percentile statistics : 20191225.v01 (using entries in the PDB archive December 25th 2019)  
Refmac : 5.8.0158  
CCP4 : 7.0.044 (Gargrove)  
Ideal geometry (proteins) : Engh & Huber (2001)  
Ideal geometry (DNA, RNA) : Parkinson et al. (1996)  
Validation Pipeline (wwPDB-VP) : 2.36

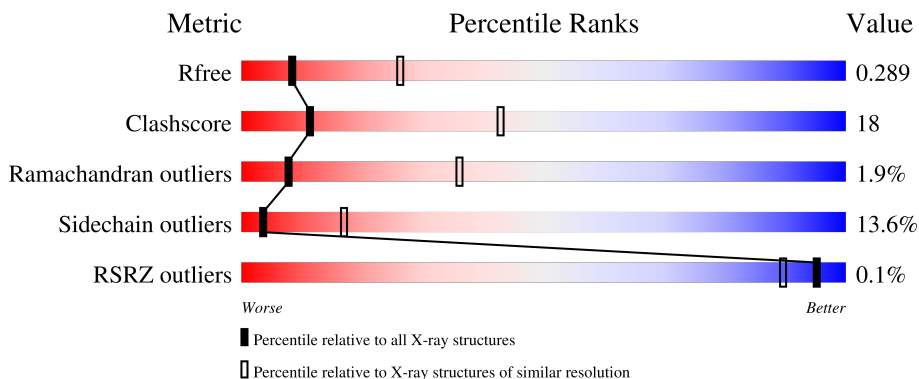
# 1 Overall quality at a glance

The following experimental techniques were used to determine the structure:

*X-RAY DIFFRACTION*

The reported resolution of this entry is 3.00 Å.

Percentile scores (ranging between 0-100) for global validation metrics of the entry are shown in the following graphic. The table shows the number of entries on which the scores are based.



Metric	Whole archive (#Entries)	Similar resolution (#Entries, resolution range(Å))
$R_{free}$	130704	2092 (3.00-3.00)
Clashscore	141614	2416 (3.00-3.00)
Ramachandran outliers	138981	2333 (3.00-3.00)
Sidechain outliers	138945	2336 (3.00-3.00)
RSRZ outliers	127900	1990 (3.00-3.00)

The table below summarises the geometric issues observed across the polymeric chains and their fit to the electron density. The red, orange, yellow and green segments of the lower bar indicate the fraction of residues that contain outliers for  $\geq 3$ , 2, 1 and 0 types of geometric quality criteria respectively. A grey segment represents the fraction of residues that are not modelled. The numeric value for each fraction is indicated below the corresponding segment, with a dot representing fractions  $\leq 5\%$ . The upper red bar (where present) indicates the fraction of residues that have poor fit to the electron density. The numeric value is given above the bar.

Mol	Chain	Length	Quality of chain
1	A	560	 50% 38% 9% ..
1	B	560	 63% 29% 6% .

## 2 Entry composition [i](#)

There are 3 unique types of molecules in this entry. The entry contains 8820 atoms, of which 0 are hydrogens and 0 are deuteriums.

In the tables below, the ZeroOcc column contains the number of atoms modelled with zero occupancy, the AltConf column contains the number of residues with at least one atom in alternate conformation and the Trace column contains the number of residues modelled with at most 2 atoms.

- Molecule 1 is a protein called VANILLYL-ALCOHOL OXIDASE.

Mol	Chain	Residues	Atoms					ZeroOcc	AltConf	Trace
			Total	C	N	O	S			
1	A	550	4346	2790	744	788	24	0	0	0
1	B	550	4346	2790	744	788	24	0	0	0

There are 2 discrepancies between the modelled and reference sequences:

Chain	Residue	Modelled	Actual	Comment	Reference
A	502	GLY	GLU	engineered mutation	UNP P56216
B	502	GLY	GLU	engineered mutation	UNP P56216

- Molecule 2 is FLAVIN-ADENINE DINUCLEOTIDE (three-letter code: FAD) (formula:  $C_{27}H_{33}N_9O_{15}P_2$ ).



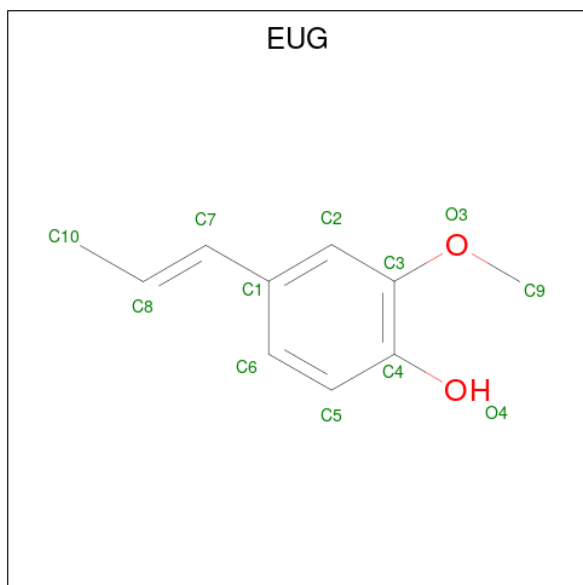
Mol	Chain	Residues	Atoms					ZeroOcc	AltConf
			Total	C	N	O	P		
2	A	1	53	27	9	15	2	0	0

*Continued on next page...*

Continued from previous page...

Mol	Chain	Residues	Atoms				ZeroOcc	AltConf	
			Total	C	N	O			P
2	B	1	53	27	9	15	2	0	0

- Molecule 3 is 2-methoxy-4-[(1E)-prop-1-en-1-yl]phenol (three-letter code: EUG) (formula:  $C_{10}H_{12}O_2$ ).



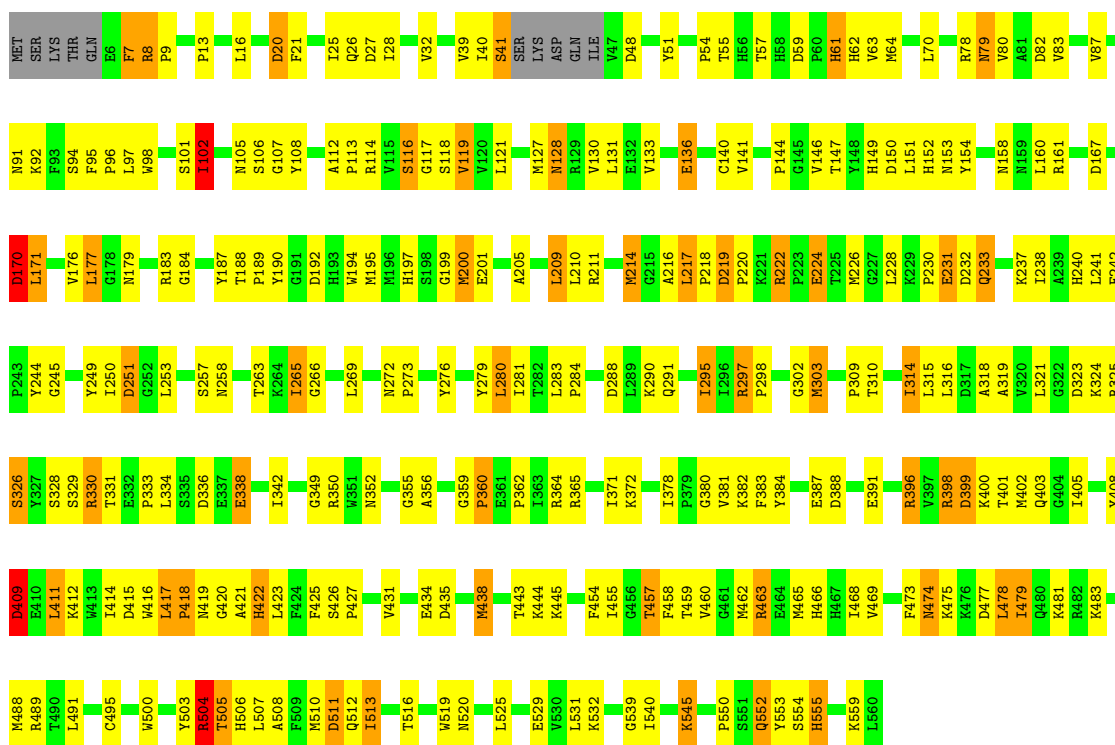
Mol	Chain	Residues	Atoms			ZeroOcc	AltConf
			Total	C	O		
3	A	1	11	9	2	0	0
3	B	1	11	9	2	0	0

### 3 Residue-property plots

These plots are drawn for all protein, RNA, DNA and oligosaccharide chains in the entry. The first graphic for a chain summarises the proportions of the various outlier classes displayed in the second graphic. The second graphic shows the sequence view annotated by issues in geometry and electron density. Residues are color-coded according to the number of geometric quality criteria for which they contain at least one outlier: green = 0, yellow = 1, orange = 2 and red = 3 or more. A red dot above a residue indicates a poor fit to the electron density ( $RSRZ > 2$ ). Stretches of 2 or more consecutive residues without any outlier are shown as a green connector. Residues present in the sample, but not in the model, are shown in grey.

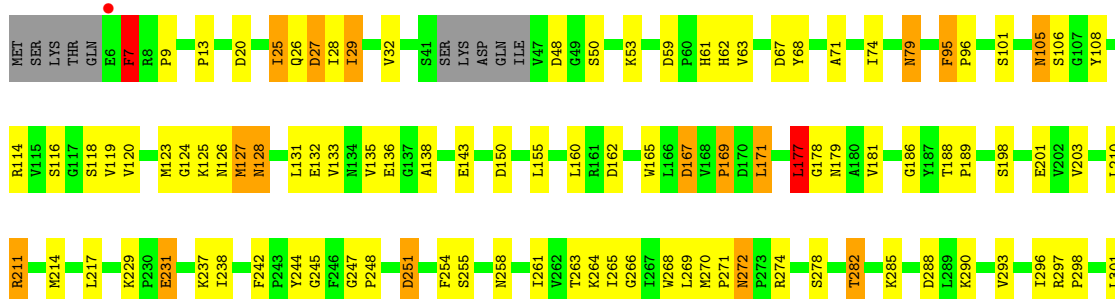
#### • Molecule 1: VANILLYL-ALCOHOL OXIDASE

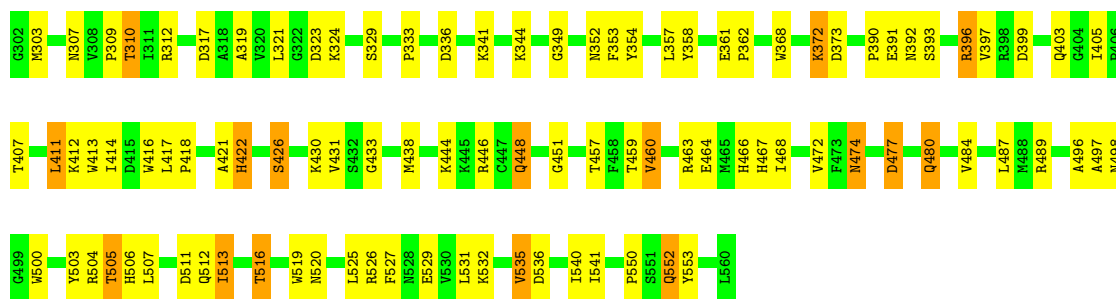
Chain A: 



#### • Molecule 1: VANILLYL-ALCOHOL OXIDASE

Chain B: 





## 4 Data and refinement statistics i

Property	Value	Source
Space group	I 4	Depositor
Cell constants a, b, c, $\alpha$ , $\beta$ , $\gamma$	129.91Å 129.91Å 134.43Å 90.00° 90.00° 90.00°	Depositor
Resolution (Å)	40.00 – 3.00 42.36 – 3.00	Depositor EDS
% Data completeness (in resolution range)	97.5 (40.00-3.00) 97.5 (42.36-3.00)	Depositor EDS
$R_{merge}$	0.13	Depositor
$R_{sym}$	(Not available)	Depositor
$\langle I/\sigma(I) \rangle$ <sup>1</sup>	1.72 (at 3.01Å)	Xtriage
Refinement program	REFMAC 5.1.27	Depositor
R, $R_{free}$	0.217 , 0.307 0.200 , 0.289	Depositor DCC
$R_{free}$ test set	1114 reflections (5.11%)	wwPDB-VP
Wilson B-factor (Å <sup>2</sup> )	70.4	Xtriage
Anisotropy	0.301	Xtriage
Bulk solvent $k_{sol}$ (e/Å <sup>3</sup> ), $B_{sol}$ (Å <sup>2</sup> )	0.29 , 43.0	EDS
L-test for twinning <sup>2</sup>	$\langle  L  \rangle = 0.47$ , $\langle L^2 \rangle = 0.30$	Xtriage
Estimated twinning fraction	0.007 for l,-k,h 0.013 for -l,-k,-h 0.022 for -h,-l,-k 0.008 for -h,l,k 0.042 for -h,k,-l	Xtriage
$F_o, F_c$ correlation	0.93	EDS
Total number of atoms	8820	wwPDB-VP
Average B, all atoms (Å <sup>2</sup> )	52.0	wwPDB-VP

Xtriage's analysis on translational NCS is as follows: *The largest off-origin peak in the Patterson function is 3.95% of the height of the origin peak. No significant pseudotranslation is detected.*

<sup>1</sup> Intensities estimated from amplitudes.

<sup>2</sup> Theoretical values of  $\langle |L| \rangle$ ,  $\langle L^2 \rangle$  for acentric reflections are 0.5, 0.333 respectively for untwinned datasets, and 0.375, 0.2 for perfectly twinned datasets.

## 5 Model quality [i](#)

### 5.1 Standard geometry [i](#)

Bond lengths and bond angles in the following residue types are not validated in this section: EUG, FAD

The Z score for a bond length (or angle) is the number of standard deviations the observed value is removed from the expected value. A bond length (or angle) with  $|Z| > 5$  is considered an outlier worth inspection. RMSZ is the root-mean-square of all Z scores of the bond lengths (or angles).

Mol	Chain	Bond lengths		Bond angles	
		RMSZ	# Z  >5	RMSZ	# Z  >5
1	A	0.76	0/4465	1.01	16/6068 (0.3%)
1	B	0.53	0/4465	0.84	11/6068 (0.2%)
All	All	0.65	0/8930	0.93	27/12136 (0.2%)

Chiral center outliers are detected by calculating the chiral volume of a chiral center and verifying if the center is modelled as a planar moiety or with the opposite hand. A planarity outlier is detected by checking planarity of atoms in a peptide group, atoms in a mainchain group or atoms of a sidechain that are expected to be planar.

Mol	Chain	#Chirality outliers	#Planarity outliers
1	A	0	2
1	B	0	1
All	All	0	3

There are no bond length outliers.

All (27) bond angle outliers are listed below:

Mol	Chain	Res	Type	Atoms	Z	Observed(°)	Ideal(°)
1	A	388	ASP	CB-CG-OD2	8.24	125.72	118.30
1	A	170	ASP	CB-CG-OD2	7.56	125.11	118.30
1	A	219	ASP	CB-CG-OD2	6.80	124.42	118.30
1	B	177	LEU	CA-CB-CG	6.43	130.09	115.30
1	A	398	ARG	NE-CZ-NH2	-6.22	117.19	120.30
1	A	288	ASP	CB-CG-OD2	5.94	123.65	118.30
1	A	399	ASP	CB-CG-OD2	5.92	123.63	118.30
1	A	20	ASP	CB-CG-OD2	5.82	123.54	118.30
1	A	409	ASP	CB-CG-OD2	5.80	123.52	118.30
1	B	317	ASP	CB-CG-OD2	5.75	123.47	118.30
1	B	150	ASP	CB-CG-OD2	5.65	123.38	118.30
1	B	477	ASP	CB-CG-OD2	5.63	123.37	118.30

*Continued on next page...*



Continued from previous page...

Mol	Chain	Res	Type	Atoms	Z	Observed(°)	Ideal(°)
1	A	27	ASP	CB-CG-OD2	5.59	123.33	118.30
1	A	192	ASP	CB-CG-OD2	5.59	123.33	118.30
1	A	232	ASP	CB-CG-OD2	5.52	123.27	118.30
1	B	67	ASP	CB-CG-OD2	5.46	123.22	118.30
1	B	167	ASP	CB-CG-OD2	5.40	123.16	118.30
1	A	511	ASP	CB-CG-OD2	5.38	123.14	118.30
1	B	504	ARG	NE-CZ-NH1	5.37	122.98	120.30
1	A	435	ASP	CB-CG-OD2	5.35	123.11	118.30
1	B	162	ASP	CB-CG-OD2	5.34	123.11	118.30
1	A	48	ASP	CB-CG-OD2	5.26	123.03	118.30
1	B	20	ASP	CB-CG-OD2	5.22	123.00	118.30
1	A	136	GLU	CA-CB-CG	5.18	124.79	113.40
1	A	504	ARG	NE-CZ-NH1	5.09	122.84	120.30
1	B	27	ASP	CB-CG-OD2	5.08	122.87	118.30
1	B	373	ASP	CB-CG-OD2	5.06	122.85	118.30

There are no chirality outliers.

All (3) planarity outliers are listed below:

Mol	Chain	Res	Type	Group
1	A	127	MET	Peptide
1	A	457	THR	Peptide
1	B	127	MET	Peptide

## 5.2 Too-close contacts

In the following table, the Non-H and H(model) columns list the number of non-hydrogen atoms and hydrogen atoms in the chain respectively. The H(added) column lists the number of hydrogen atoms added and optimized by MolProbity. The Clashes column lists the number of clashes within the asymmetric unit, whereas Symm-Clashes lists symmetry-related clashes.

Mol	Chain	Non-H	H(model)	H(added)	Clashes	Symm-Clashes
1	A	4346	0	4285	198	0
1	B	4346	0	4285	123	0
2	A	53	0	29	2	0
2	B	53	0	29	10	0
3	A	11	0	7	1	0
3	B	11	0	7	1	0
All	All	8820	0	8642	310	0

The all-atom clashscore is defined as the number of clashes found per 1000 atoms (including

hydrogen atoms). The all-atom clashscore for this structure is 18.

All (310) close contacts within the same asymmetric unit are listed below, sorted by their clash magnitude.

Atom-1	Atom-2	Interatomic distance (Å)	Clash overlap (Å)
2:B:1561:FAD:H8A	2:B:1561:FAD:C5B	1.76	1.14
2:B:1561:FAD:H51A	2:B:1561:FAD:C8A	1.80	1.12
1:A:552:GLN:H	1:A:552:GLN:HE21	1.10	0.99
1:A:505:THR:HG21	1:A:513:ILE:CD1	1.93	0.98
2:B:1561:FAD:H8A	2:B:1561:FAD:H51A	0.93	0.91
1:A:79:ASN:ND2	1:A:82:ASP:H	1.69	0.90
1:A:177:LEU:HD22	1:A:265:ILE:HG22	1.55	0.87
1:B:203:VAL:HG23	1:B:263:THR:HG21	1.57	0.87
1:B:177:LEU:HB2	1:B:265:ILE:HG21	1.57	0.86
1:A:505:THR:HG21	1:A:513:ILE:HD13	1.58	0.85
1:A:531:LEU:HD22	1:B:531:LEU:HD22	1.59	0.84
1:A:222:ARG:HG2	1:A:222:ARG:HH11	1.42	0.82
1:A:211:ARG:HG3	1:B:519:TRP:CZ3	2.15	0.81
1:A:457:THR:HG22	1:A:458:PHE:O	1.80	0.81
1:A:222:ARG:HD2	1:A:224:GLU:OE1	1.79	0.81
1:A:489:ARG:HD3	1:A:512:GLN:OE1	1.82	0.79
1:B:505:THR:HG21	1:B:513:ILE:HD12	1.65	0.78
1:A:555:HIS:HB3	1:A:559:LYS:HD2	1.66	0.77
1:B:131:LEU:HD11	1:B:143:GLU:HG3	1.66	0.77
1:B:61:HIS:ND1	1:B:421:ALA:HA	2.00	0.77
1:A:211:ARG:HG3	1:B:519:TRP:CH2	2.21	0.76
1:A:170:ASP:OD1	1:A:187:TYR:HE2	1.69	0.75
1:A:505:THR:CG2	1:A:513:ILE:HD13	2.16	0.75
1:B:297:ARG:HB3	1:B:298:PRO:HD3	1.67	0.75
1:A:217:LEU:HD22	1:A:218:PRO:HD2	1.67	0.75
1:A:425:PHE:CZ	1:A:427:PRO:HG3	2.23	0.74
1:A:201:GLU:OE2	1:A:211:ARG:HD3	1.86	0.74
1:B:201:GLU:HB3	1:B:264:LYS:HB2	1.70	0.74
1:B:526:ARG:HH21	1:B:529:GLU:CD	1.89	0.74
1:A:419:ASN:O	1:A:474:ASN:HA	1.88	0.74
1:A:197:HIS:HB2	1:A:265:ILE:HD11	1.68	0.73
1:A:552:GLN:H	1:A:552:GLN:NE2	1.87	0.73
1:A:13:PRO:HD3	1:A:117:GLY:O	1.90	0.72
1:A:114:ARG:NH2	1:A:511:ASP:OD2	2.21	0.72
1:A:552:GLN:HE21	1:A:552:GLN:N	1.88	0.71
1:A:136:GLU:HA	1:B:297:ARG:HH21	1.55	0.70
1:A:403:GLN:HG3	1:A:405:ILE:HD12	1.74	0.70
1:A:297:ARG:HB3	1:A:298:PRO:HD3	1.72	0.70

*Continued on next page...*

*Continued from previous page...*

Atom-1	Atom-2	Interatomic distance (Å)	Clash overlap (Å)
1:A:79:ASN:ND2	1:A:82:ASP:N	2.40	0.70
1:B:28:ILE:O	1:B:32:VAL:HG22	1.92	0.70
1:B:550:PRO:HB2	1:B:552:GLN:NE2	2.08	0.69
1:A:8:ARG:O	1:A:41:SER:HB3	1.92	0.69
1:A:170:ASP:OD1	1:A:187:TYR:CE2	2.46	0.68
1:A:222:ARG:HG2	1:A:222:ARG:NH1	2.07	0.67
1:B:282:THR:HG22	1:B:352:ASN:HD22	1.58	0.67
1:A:479:ILE:O	1:A:483:LYS:HG3	1.95	0.67
1:A:13:PRO:HG2	1:A:16:LEU:HD23	1.77	0.67
1:B:411:LEU:HD22	1:B:414:ILE:HD12	1.77	0.66
1:A:79:ASN:HD22	1:A:82:ASP:H	1.42	0.66
1:A:324:LYS:HD2	1:A:416:TRP:NE1	2.11	0.66
1:B:203:VAL:HG23	1:B:263:THR:CG2	2.27	0.65
1:A:250:ILE:O	1:A:253:LEU:HB2	1.97	0.65
1:A:177:LEU:HB2	1:A:265:ILE:CG2	2.26	0.64
1:A:9:PRO:HG3	1:A:21:PHE:CE1	2.31	0.64
1:A:177:LEU:HB2	1:A:265:ILE:HG21	1.79	0.64
1:A:276:TYR:CE2	1:A:403:GLN:HB3	2.33	0.64
1:A:32:VAL:HG12	1:A:82:ASP:OD2	1.98	0.63
1:A:425:PHE:HB2	1:A:488:MET:SD	2.37	0.63
1:A:276:TYR:HE2	1:A:403:GLN:NE2	1.97	0.63
1:B:513:ILE:O	1:B:516:THR:HB	1.99	0.63
1:A:310:THR:HG22	1:A:459:THR:HA	1.81	0.62
1:A:276:TYR:OH	1:A:402:MET:HB2	1.99	0.62
1:B:282:THR:HG22	1:B:352:ASN:ND2	2.13	0.62
1:A:9:PRO:HG3	1:A:21:PHE:CZ	2.34	0.62
1:A:101:SER:HB3	1:A:144:PRO:O	1.99	0.62
1:B:181:VAL:O	1:B:255:SER:HB2	2.00	0.62
1:B:126:ASN:O	1:B:128:ASN:HB2	1.99	0.62
1:B:114:ARG:NH2	1:B:511:ASP:OD2	2.32	0.61
1:B:438:MET:HG2	1:B:500:TRP:HH2	1.64	0.61
1:A:443:THR:HG21	1:A:469:VAL:HG22	1.82	0.61
1:A:387:GLU:HA	1:A:396:ARG:NH2	2.16	0.60
1:B:179:ASN:ND2	2:B:1561:FAD:O4'	2.32	0.60
1:A:478:LEU:HD12	1:A:478:LEU:H	1.67	0.60
1:A:80:VAL:HB	1:A:231:GLU:HG2	1.83	0.59
1:A:158:ASN:O	1:A:160:LEU:HG	2.02	0.59
1:B:309:PRO:HB2	1:B:353:PHE:CE1	2.37	0.59
1:A:105:ASN:OD1	2:A:1561:FAD:H5'2	2.02	0.59
1:A:177:LEU:C	1:A:177:LEU:HD12	2.23	0.59
1:A:324:LYS:HE3	1:A:334:LEU:HG	1.84	0.59

*Continued on next page...*

*Continued from previous page...*

Atom-1	Atom-2	Interatomic distance (Å)	Clash overlap (Å)
1:A:280:LEU:HD12	1:A:281:ILE:N	2.18	0.58
1:A:16:LEU:HD11	1:A:20:ASP:HB3	1.85	0.58
1:A:295:ILE:O	1:A:298:PRO:HD2	2.03	0.58
1:A:338:GLU:O	1:A:342:ILE:HG13	2.03	0.57
1:B:101:SER:O	1:B:124:GLY:HA3	2.04	0.57
1:A:149:HIS:HD2	1:A:153:ASN:HD21	1.53	0.57
1:A:284:PRO:HG3	1:A:380:GLY:O	2.05	0.57
1:B:203:VAL:CG2	1:B:263:THR:HG21	2.33	0.57
1:B:309:PRO:HB2	1:B:353:PHE:HE1	1.69	0.57
1:B:426:SER:HA	1:B:467:HIS:O	2.05	0.57
1:B:532:LYS:HE3	1:B:536:ASP:HB3	1.85	0.57
1:B:201:GLU:OE2	1:B:211:ARG:NH2	2.34	0.57
1:A:136:GLU:HA	1:B:297:ARG:NH2	2.19	0.56
1:B:505:THR:HG21	1:B:513:ILE:CD1	2.34	0.56
1:A:531:LEU:CD2	1:B:531:LEU:HD22	2.32	0.56
1:A:177:LEU:HD22	1:A:265:ILE:CG2	2.34	0.56
1:A:133:VAL:HG21	1:A:154:TYR:CE1	2.40	0.55
1:B:214:MET:CE	1:B:245:GLY:HA2	2.36	0.55
1:B:201:GLU:CB	1:B:264:LYS:HB2	2.36	0.55
1:A:149:HIS:O	1:A:152:HIS:HB3	2.06	0.55
1:A:330:ARG:NH2	1:A:333:PRO:O	2.38	0.55
1:A:210:LEU:HD23	1:A:211:ARG:N	2.22	0.55
1:A:265:ILE:HG13	1:A:266:GLY:N	2.22	0.55
1:B:167:ASP:OD1	1:B:186:GLY:HA3	2.07	0.55
1:B:258:ASN:OD1	1:B:258:ASN:N	2.33	0.55
1:B:349:GLY:H	1:B:352:ASN:HD21	1.55	0.54
1:A:108:TYR:CZ	1:A:504:ARG:HG2	2.43	0.54
1:A:195:MET:HG2	1:B:244:TYR:OH	2.08	0.54
1:B:552:GLN:NE2	1:B:552:GLN:H	2.06	0.54
1:B:459:THR:OG1	1:B:466:HIS:HB2	2.08	0.54
1:B:474:ASN:ND2	1:B:477:ASP:HB2	2.23	0.54
1:B:393:SER:OG	1:B:396:ARG:HB2	2.07	0.54
1:A:314:ILE:HG22	1:A:350:ARG:O	2.07	0.53
1:A:454:PHE:C	1:A:454:PHE:CD2	2.81	0.53
1:B:550:PRO:HB2	1:B:552:GLN:HE22	1.71	0.53
1:A:519:TRP:CZ3	1:B:211:ARG:HG2	2.44	0.53
1:A:290:LYS:HG3	1:A:291:GLN:N	2.21	0.53
1:B:169:PRO:HB3	2:B:1561:FAD:C4	2.39	0.53
1:B:468:ILE:HD11	3:B:1562:EUG:H93	1.90	0.53
1:A:468:ILE:HD11	3:A:1562:EUG:H93	1.91	0.53
1:A:371:ILE:O	1:A:372:LYS:C	2.47	0.53

*Continued on next page...*

*Continued from previous page...*

Atom-1	Atom-2	Interatomic distance (Å)	Clash overlap (Å)
1:A:149:HIS:CD2	1:A:153:ASN:HD21	2.26	0.52
1:B:123:MET:O	1:B:127:MET:HB2	2.09	0.52
1:A:59:ASP:OD2	1:A:62:HIS:HA	2.10	0.52
1:A:309:PRO:O	1:A:460:VAL:HG23	2.09	0.52
1:A:477:ASP:O	1:A:481:LYS:HG3	2.08	0.52
1:A:425:PHE:CE2	1:A:491:LEU:HB3	2.45	0.52
1:A:408:TYR:O	1:A:411:LEU:HB2	2.10	0.52
1:A:281:ILE:HG12	1:A:383:PHE:CD1	2.44	0.52
1:A:130:VAL:CG2	1:A:146:VAL:HG11	2.40	0.52
1:B:268:TRP:O	1:B:269:LEU:HD23	2.10	0.52
1:A:188:THR:HB	1:A:189:PRO:HD3	1.92	0.51
1:A:39:VAL:O	1:A:40:ILE:HD13	2.08	0.51
1:B:480:GLN:O	1:B:484:VAL:HG23	2.10	0.51
1:A:188:THR:HB	1:A:189:PRO:CD	2.41	0.51
1:B:526:ARG:NH2	1:B:529:GLU:OE1	2.36	0.51
1:A:98:TRP:CE2	1:A:113:PRO:HA	2.45	0.51
1:A:107:GLY:HA2	1:A:422:HIS:O	2.11	0.51
1:A:214:MET:SD	1:A:245:GLY:HA2	2.50	0.51
1:B:489:ARG:HD3	1:B:512:GLN:OE1	2.10	0.51
1:A:228:LEU:O	1:A:233:GLN:NE2	2.43	0.51
1:A:61:HIS:ND1	1:A:421:ALA:HA	2.26	0.51
1:A:179:ASN:OD1	1:A:184:GLY:HA3	2.11	0.51
1:A:96:PRO:HG3	1:A:553:TYR:OH	2.10	0.50
1:A:167:ASP:OD2	1:A:190:TYR:C	2.49	0.50
1:A:438:MET:HB3	1:A:500:TRP:HH2	1.75	0.50
1:A:241:LEU:HB3	1:B:463:ARG:HB3	1.93	0.50
1:B:177:LEU:HD12	1:B:178:GLY:N	2.26	0.50
1:B:251:ASP:O	1:B:254:PHE:HB2	2.11	0.50
1:B:293:VAL:HA	1:B:296:ILE:HD12	1.92	0.50
1:A:382:LYS:HD2	1:A:384:TYR:OH	2.12	0.50
1:B:177:LEU:CB	1:B:265:ILE:HG21	2.38	0.50
1:B:531:LEU:O	1:B:535:VAL:HG13	2.11	0.50
1:A:257:SER:HB3	1:B:248:PRO:HG3	1.93	0.50
1:A:400:LYS:O	1:A:401:THR:C	2.51	0.49
1:A:131:LEU:HD12	1:A:141:VAL:HG12	1.95	0.49
1:A:257:SER:CB	1:B:248:PRO:HG3	2.42	0.49
1:A:194:TRP:O	1:A:197:HIS:HD2	1.95	0.49
1:A:61:HIS:HB3	1:A:421:ALA:HB1	1.94	0.49
1:A:409:ASP:OD1	1:A:409:ASP:N	2.34	0.49
1:B:125:LYS:HE2	1:B:126:ASN:HD21	1.78	0.49
1:B:307:ASN:HB3	1:B:358:TYR:HE1	1.77	0.49

*Continued on next page...*

*Continued from previous page...*

Atom-1	Atom-2	Interatomic distance (Å)	Clash overlap (Å)
1:A:491:LEU:HA	1:A:491:LEU:HD23	1.73	0.49
1:B:171:LEU:HD21	2:B:1561:FAD:HM73	1.94	0.49
1:B:188:THR:HB	1:B:189:PRO:HD2	1.94	0.49
1:A:419:ASN:H	1:A:474:ASN:HB2	1.77	0.49
1:A:463:ARG:NH2	1:B:138:ALA:O	2.44	0.49
1:A:525:LEU:O	1:A:529:GLU:HG3	2.13	0.48
1:A:63:VAL:HG23	1:A:64:MET:N	2.27	0.48
1:A:79:ASN:HD21	1:A:82:ASP:N	2.08	0.48
1:A:426:SER:N	1:A:427:PRO:HD3	2.28	0.48
1:A:167:ASP:OD2	1:A:190:TYR:O	2.32	0.48
1:B:361:GLU:N	1:B:362:PRO:HD2	2.28	0.48
1:A:324:LYS:HD2	1:A:416:TRP:HE1	1.76	0.48
1:A:443:THR:HG21	1:A:469:VAL:CG2	2.42	0.48
1:A:425:PHE:HZ	1:A:495:CYS:HG	1.61	0.48
1:A:431:VAL:HG22	1:A:465:MET:HG3	1.95	0.48
1:B:25:ILE:HG23	1:B:29:ILE:HD12	1.96	0.48
1:A:62:HIS:O	1:A:62:HIS:ND1	2.45	0.48
1:B:251:ASP:OD1	1:B:251:ASP:N	2.47	0.48
1:A:183:ARG:NH1	1:B:247:GLY:O	2.36	0.48
1:A:240:HIS:HD2	1:A:266:GLY:HA3	1.77	0.48
1:B:96:PRO:HG3	1:B:553:TYR:OH	2.14	0.47
1:A:242:PHE:CZ	1:A:244:TYR:HB2	2.49	0.47
1:A:319:ALA:HB2	1:A:416:TRP:CE3	2.49	0.47
1:B:333:PRO:HB2	1:B:448:GLN:OE1	2.13	0.47
1:B:229:LYS:HD2	1:B:231:GLU:OE2	2.14	0.47
1:B:13:PRO:HG3	1:B:95:PHE:CE1	2.49	0.47
1:B:198:SER:O	1:B:266:GLY:HA3	2.15	0.47
1:B:310:THR:HG22	1:B:459:THR:HG22	1.95	0.47
1:B:307:ASN:HB3	1:B:358:TYR:CE1	2.49	0.47
1:B:312:ARG:HD3	1:B:354:TYR:CE1	2.50	0.47
2:B:1561:FAD:N1	2:B:1561:FAD:O3'	2.39	0.47
1:A:249:TYR:CE1	1:A:251:ASP:CG	2.88	0.47
1:A:297:ARG:HB3	1:A:298:PRO:CD	2.44	0.46
1:B:214:MET:HE2	1:B:242:PHE:HD2	1.80	0.46
1:A:414:ILE:O	1:A:420:GLY:HA3	2.15	0.46
1:A:147:THR:HG23	1:A:150:ASP:OD2	2.14	0.46
1:A:249:TYR:HE1	1:A:251:ASP:CG	2.19	0.46
1:A:51:TYR:O	1:A:54:PRO:HD3	2.15	0.46
1:B:296:ILE:HG21	1:B:460:VAL:HG11	1.96	0.46
1:A:25:ILE:HD13	1:A:25:ILE:HA	1.77	0.46
1:B:177:LEU:HB2	1:B:265:ILE:CG2	2.39	0.46

*Continued on next page...*

*Continued from previous page...*

Atom-1	Atom-2	Interatomic distance (Å)	Clash overlap (Å)
1:B:177:LEU:HD12	1:B:177:LEU:C	2.35	0.46
1:B:179:ASN:ND2	2:B:1561:FAD:O3'	2.48	0.45
1:B:403:GLN:HG3	1:B:405:ILE:HD12	1.99	0.45
1:B:446:ARG:O	1:B:487:LEU:HD13	2.16	0.45
1:A:119:VAL:HG12	1:A:119:VAL:O	2.15	0.45
1:A:349:GLY:H	1:A:352:ASN:HD21	1.64	0.45
1:A:510:MET:CE	1:A:545:LYS:HE3	2.47	0.45
1:B:496:ALA:C	1:B:498:ASN:H	2.20	0.45
1:A:315:LEU:HA	1:A:318:ALA:HB3	1.97	0.45
1:B:319:ALA:HB3	1:B:413:TRP:HB2	1.99	0.45
1:A:364:ARG:O	1:A:365:ARG:C	2.55	0.45
1:A:506:HIS:ND1	1:A:507:LEU:N	2.63	0.45
1:A:130:VAL:HG22	1:A:146:VAL:HG11	1.99	0.45
1:A:112:ALA:O	1:A:507:LEU:HD11	2.17	0.45
1:B:448:GLN:O	1:B:451:GLY:N	2.44	0.45
2:B:1561:FAD:C5B	2:B:1561:FAD:C8A	2.63	0.45
1:A:107:GLY:HA2	1:A:423:LEU:HA	1.99	0.44
1:A:171:LEU:HD11	2:A:1561:FAD:HM73	1.99	0.44
1:A:214:MET:C	1:A:216:ALA:H	2.19	0.44
1:A:360:PRO:CB	1:A:362:PRO:HD2	2.47	0.44
1:A:316:LEU:HD13	1:A:455:ILE:HG22	2.00	0.44
1:A:231:GLU:H	1:A:231:GLU:HG3	1.44	0.44
1:A:87:VAL:CG1	1:A:205:ALA:O	2.66	0.44
1:B:79:ASN:C	1:B:79:ASN:HD22	2.21	0.44
1:B:165:TRP:HE1	1:B:272:ASN:ND2	2.16	0.44
1:A:133:VAL:CG2	1:A:154:TYR:CE1	3.00	0.44
1:A:276:TYR:HE1	1:A:356:ALA:HB1	1.82	0.44
1:A:321:LEU:HD23	1:A:321:LEU:HA	1.85	0.44
1:B:416:TRP:HB3	1:B:472:VAL:HG11	1.99	0.44
1:B:438:MET:HG2	1:B:500:TRP:CH2	2.50	0.44
1:A:315:LEU:HA	1:A:315:LEU:HD23	1.67	0.44
1:B:321:LEU:HD22	1:B:392:ASN:HB2	1.99	0.44
1:B:59:ASP:OD2	1:B:62:HIS:HA	2.17	0.43
1:A:250:ILE:HD12	1:B:527:PHE:CE2	2.53	0.43
1:A:98:TRP:CD2	1:A:113:PRO:HA	2.53	0.43
1:B:474:ASN:HD22	1:B:477:ASP:HB2	1.84	0.43
1:A:70:LEU:HD12	1:A:70:LEU:HA	1.83	0.43
1:A:201:GLU:OE1	1:A:263:THR:OG1	2.35	0.43
1:A:219:ASP:OD1	1:A:220:PRO:HD2	2.19	0.43
1:A:532:LYS:HE3	1:A:550:PRO:HG3	2.00	0.43
1:A:63:VAL:HG12	1:A:473:PHE:CZ	2.54	0.43

*Continued on next page...*

*Continued from previous page...*

Atom-1	Atom-2	Interatomic distance (Å)	Clash overlap (Å)
1:B:133:VAL:HG11	1:B:160:LEU:HD13	1.99	0.43
1:B:397:VAL:HG13	1:B:407:THR:HG21	2.01	0.43
1:A:272:ASN:HA	1:A:273:PRO:HD3	1.90	0.43
1:A:273:PRO:O	1:A:359:GLY:HA2	2.19	0.43
1:A:459:THR:OG1	1:A:466:HIS:HB2	2.19	0.43
1:B:270:MET:HA	1:B:271:PRO:HD2	1.92	0.43
1:A:283:LEU:HD22	1:A:378:ILE:HD13	2.00	0.43
1:B:7:PHE:O	1:B:9:PRO:HD3	2.18	0.43
1:A:200:MET:HB3	1:A:265:ILE:HD12	2.01	0.42
1:B:119:VAL:O	1:B:120:VAL:C	2.57	0.42
1:B:293:VAL:HB	1:B:433:GLY:HA2	2.00	0.42
1:B:71:ALA:HB2	1:B:120:VAL:HG23	2.01	0.42
1:A:151:LEU:HD22	1:A:176:VAL:HG21	2.02	0.42
1:A:310:THR:CG2	1:A:459:THR:HG22	2.48	0.42
1:B:391:GLU:HA	1:B:396:ARG:HE	1.84	0.42
1:A:417:LEU:O	1:A:418:PRO:C	2.57	0.42
1:B:177:LEU:O	1:B:178:GLY:C	2.57	0.42
1:B:324:LYS:HB2	1:B:416:TRP:O	2.19	0.42
1:A:91:ASN:ND2	1:A:540:ILE:HD11	2.34	0.42
1:A:258:ASN:OD1	1:A:532:LYS:HE2	2.19	0.42
1:A:297:ARG:HH21	1:B:136:GLU:HA	1.85	0.42
1:A:507:LEU:HD23	1:A:507:LEU:HA	1.81	0.42
1:B:540:ILE:HD12	1:B:541:ILE:HD13	2.00	0.42
1:A:61:HIS:N	1:A:61:HIS:CD2	2.87	0.42
1:A:279:TYR:CZ	1:A:355:GLY:HA3	2.55	0.42
1:A:112:ALA:HA	1:A:113:PRO:HD3	1.81	0.42
1:A:140:CYS:HB3	1:A:269:LEU:HD11	2.01	0.42
1:B:261:ILE:HD11	1:B:541:ILE:HD12	2.02	0.42
1:B:416:TRP:O	1:B:417:LEU:HD23	2.19	0.42
1:A:398:ARG:O	1:A:399:ASP:C	2.57	0.42
1:B:214:MET:HE2	1:B:245:GLY:HA2	2.01	0.42
1:A:177:LEU:C	1:A:177:LEU:CD1	2.88	0.42
1:A:505:THR:CG2	1:A:513:ILE:CD1	2.76	0.42
1:A:505:THR:HB	1:A:506:HIS:H	1.62	0.42
1:A:102:ILE:O	1:A:102:ILE:CG2	2.68	0.42
1:A:415:ASP:O	1:A:416:TRP:C	2.58	0.42
1:A:39:VAL:HG12	1:A:40:ILE:N	2.35	0.41
1:A:97:LEU:HD13	1:A:121:LEU:HD22	2.01	0.41
1:A:106:SER:CB	1:A:422:HIS:HE1	2.34	0.41
1:A:426:SER:N	1:A:427:PRO:CD	2.82	0.41
1:B:119:VAL:O	1:B:119:VAL:HG12	2.20	0.41

*Continued on next page...*



Continued from previous page...

Atom-1	Atom-2	Interatomic distance (Å)	Clash overlap (Å)
1:A:209:LEU:HD12	1:A:230:PRO:HB2	2.02	0.41
1:B:496:ALA:C	1:B:498:ASN:N	2.73	0.41
1:A:133:VAL:HG21	1:A:154:TYR:HE1	1.83	0.41
1:B:105:ASN:HB2	2:B:1561:FAD:O1A	2.21	0.41
1:A:280:LEU:HD11	1:A:352:ASN:HD22	1.85	0.41
1:A:7:PHE:HB2	1:A:8:ARG:HG3	2.01	0.41
1:B:106:SER:C	1:B:108:TYR:H	2.24	0.41
1:A:70:LEU:O	1:A:116:SER:HA	2.20	0.41
1:A:316:LEU:HA	1:A:316:LEU:HD12	1.83	0.41
1:A:149:HIS:CG	1:A:408:TYR:HH	2.39	0.41
1:A:177:LEU:CD2	1:A:265:ILE:HG22	2.40	0.41
1:B:285:LYS:N	1:B:288:ASP:OD2	2.43	0.41
1:B:368:TRP:O	1:B:372:LYS:HB2	2.21	0.41
1:B:525:LEU:O	1:B:529:GLU:HG3	2.21	0.41
1:B:422:HIS:HD1	1:B:422:HIS:H	1.67	0.40
1:B:519:TRP:CE3	1:B:520:ASN:HB2	2.56	0.40
1:A:128:ASN:O	1:A:146:VAL:HG22	2.22	0.40
1:A:302:GLY:O	1:A:303:MET:HB2	2.21	0.40
1:A:489:ARG:NH2	1:A:508:ALA:O	2.54	0.40
1:B:506:HIS:ND1	1:B:507:LEU:N	2.69	0.40
1:A:519:TRP:CH2	1:B:211:ARG:HD3	2.57	0.40
1:B:278:SER:OG	1:B:399:ASP:OD1	2.30	0.40
1:A:214:MET:HG3	1:A:238:ILE:HB	2.03	0.40
1:A:222:ARG:HH11	1:A:222:ARG:CG	2.19	0.40
1:A:444:LYS:O	1:A:445:LYS:C	2.57	0.40
1:A:194:TRP:O	1:A:197:HIS:CD2	2.74	0.40

There are no symmetry-related clashes.

## 5.3 Torsion angles [i](#)

### 5.3.1 Protein backbone [i](#)

In the following table, the Percentiles column shows the percent Ramachandran outliers of the chain as a percentile score with respect to all X-ray entries followed by that with respect to entries of similar resolution.

The Analysed column shows the number of residues for which the backbone conformation was analysed, and the total number of residues.

Mol	Chain	Analysed	Favoured	Allowed	Outliers	Percentiles	
1	A	546/560 (98%)	460 (84%)	75 (14%)	11 (2%)	7	34
1	B	546/560 (98%)	495 (91%)	41 (8%)	10 (2%)	8	37
All	All	1092/1120 (98%)	955 (88%)	116 (11%)	21 (2%)	8	36

All (21) Ramachandran outliers are listed below:

Mol	Chain	Res	Type
1	A	418	PRO
1	A	83	VAL
1	A	116	SER
1	A	323	ASP
1	B	418	PRO
1	B	497	ALA
1	B	7	PHE
1	B	105	ASN
1	B	274	ARG
1	B	390	PRO
1	A	326	SER
1	A	224	GLU
1	B	68	TYR
1	B	323	ASP
1	A	170	ASP
1	A	539	GLY
1	B	169	PRO
1	A	199	GLY
1	B	431	VAL
1	A	360	PRO
1	A	102	ILE

### 5.3.2 Protein sidechains [i](#)

In the following table, the Percentiles column shows the percent sidechain outliers of the chain as a percentile score with respect to all X-ray entries followed by that with respect to entries of similar resolution.

The Analysed column shows the number of residues for which the sidechain conformation was analysed, and the total number of residues.

Mol	Chain	Analysed	Rotameric	Outliers	Percentiles	
1	A	469/481 (98%)	399 (85%)	70 (15%)	3	14
1	B	469/481 (98%)	411 (88%)	58 (12%)	4	20

*Continued on next page...*

*Continued from previous page...*

Mol	Chain	Analysed	Rotameric	Outliers	Percentiles
All	All	938/962 (98%)	810 (86%)	128 (14%)	<b>3</b> <b>17</b>

All (128) residues with a non-rotameric sidechain are listed below:

Mol	Chain	Res	Type
1	A	7	PHE
1	A	8	ARG
1	A	26	GLN
1	A	28	ILE
1	A	41	SER
1	A	55	THR
1	A	57	THR
1	A	61	HIS
1	A	78	ARG
1	A	79	ASN
1	A	92	LYS
1	A	94	SER
1	A	95	PHE
1	A	102	ILE
1	A	118	SER
1	A	119	VAL
1	A	128	ASN
1	A	161	ARG
1	A	171	LEU
1	A	177	LEU
1	A	200	MET
1	A	209	LEU
1	A	214	MET
1	A	217	LEU
1	A	222	ARG
1	A	226	MET
1	A	231	GLU
1	A	233	GLN
1	A	237	LYS
1	A	251	ASP
1	A	265	ILE
1	A	280	LEU
1	A	295	ILE
1	A	297	ARG
1	A	303	MET
1	A	314	ILE
1	A	325	ARG

*Continued on next page...*

*Continued from previous page...*

<b>Mol</b>	<b>Chain</b>	<b>Res</b>	<b>Type</b>
1	A	326	SER
1	A	328	SER
1	A	329	SER
1	A	330	ARG
1	A	331	THR
1	A	336	ASP
1	A	338	GLU
1	A	381	VAL
1	A	391	GLU
1	A	396	ARG
1	A	409	ASP
1	A	411	LEU
1	A	412	LYS
1	A	417	LEU
1	A	422	HIS
1	A	434	GLU
1	A	438	MET
1	A	462	MET
1	A	463	ARG
1	A	474	ASN
1	A	475	LYS
1	A	478	LEU
1	A	479	ILE
1	A	503	TYR
1	A	504	ARG
1	A	505	THR
1	A	513	ILE
1	A	516	THR
1	A	520	ASN
1	A	545	LYS
1	A	552	GLN
1	A	554	SER
1	A	555	HIS
1	B	7	PHE
1	B	25	ILE
1	B	26	GLN
1	B	27	ASP
1	B	29	ILE
1	B	48	ASP
1	B	50	SER
1	B	53	LYS
1	B	63	VAL

*Continued on next page...*

*Continued from previous page...*

<b>Mol</b>	<b>Chain</b>	<b>Res</b>	<b>Type</b>
1	B	74	ILE
1	B	79	ASN
1	B	95	PHE
1	B	116	SER
1	B	118	SER
1	B	128	ASN
1	B	132	GLU
1	B	135	VAL
1	B	155	LEU
1	B	171	LEU
1	B	177	LEU
1	B	210	LEU
1	B	211	ARG
1	B	217	LEU
1	B	231	GLU
1	B	237	LYS
1	B	238	ILE
1	B	251	ASP
1	B	272	ASN
1	B	282	THR
1	B	290	LYS
1	B	301	LEU
1	B	303	MET
1	B	310	THR
1	B	329	SER
1	B	336	ASP
1	B	341	LYS
1	B	344	LYS
1	B	357	LEU
1	B	372	LYS
1	B	396	ARG
1	B	411	LEU
1	B	412	LYS
1	B	422	HIS
1	B	426	SER
1	B	430	LYS
1	B	444	LYS
1	B	448	GLN
1	B	457	THR
1	B	460	VAL
1	B	464	GLU
1	B	474	ASN

*Continued on next page...*

*Continued from previous page...*

Mol	Chain	Res	Type
1	B	480	GLN
1	B	503	TYR
1	B	505	THR
1	B	513	ILE
1	B	516	THR
1	B	535	VAL
1	B	552	GLN

Sometimes sidechains can be flipped to improve hydrogen bonding and reduce clashes. All (24) such sidechains are listed below:

Mol	Chain	Res	Type
1	A	79	ASN
1	A	91	ASN
1	A	128	ASN
1	A	153	ASN
1	A	197	HIS
1	A	240	HIS
1	A	291	GLN
1	A	313	HIS
1	A	352	ASN
1	A	520	ASN
1	A	538	ASN
1	A	552	GLN
1	B	79	ASN
1	B	126	ASN
1	B	128	ASN
1	B	179	ASN
1	B	197	HIS
1	B	240	HIS
1	B	272	ASN
1	B	352	ASN
1	B	439	GLN
1	B	467	HIS
1	B	520	ASN
1	B	552	GLN

### 5.3.3 RNA [i](#)

There are no RNA molecules in this entry.

## 5.4 Non-standard residues in protein, DNA, RNA chains [i](#)

There are no non-standard protein/DNA/RNA residues in this entry.

## 5.5 Carbohydrates [i](#)

There are no monosaccharides in this entry.

## 5.6 Ligand geometry [i](#)

4 ligands are modelled in this entry.

In the following table, the Counts columns list the number of bonds (or angles) for which Mogul statistics could be retrieved, the number of bonds (or angles) that are observed in the model and the number of bonds (or angles) that are defined in the Chemical Component Dictionary. The Link column lists molecule types, if any, to which the group is linked. The Z score for a bond length (or angle) is the number of standard deviations the observed value is removed from the expected value. A bond length (or angle) with  $|Z| > 2$  is considered an outlier worth inspection. RMSZ is the root-mean-square of all Z scores of the bond lengths (or angles).

Mol	Type	Chain	Res	Link	Bond lengths			Bond angles		
					Counts	RMSZ	# Z  > 2	Counts	RMSZ	# Z  > 2
3	EUG	B	1562	-	11,11,12	1.67	1 (9%)	14,14,15	1.49	2 (14%)
2	FAD	B	1561	1	53,58,58	1.21	4 (7%)	68,89,89	1.55	11 (16%)
2	FAD	A	1561	1	53,58,58	1.22	4 (7%)	68,89,89	1.67	13 (19%)
3	EUG	A	1562	-	11,11,12	1.66	1 (9%)	14,14,15	1.54	3 (21%)

In the following table, the Chirals column lists the number of chiral outliers, the number of chiral centers analysed, the number of these observed in the model and the number defined in the Chemical Component Dictionary. Similar counts are reported in the Torsion and Rings columns. '-' means no outliers of that kind were identified.

Mol	Type	Chain	Res	Link	Chirals	Torsions	Rings
3	EUG	B	1562	-	-	4/4/4/5	0/1/1/1
2	FAD	B	1561	1	-	8/30/50/50	0/6/6/6
2	FAD	A	1561	1	-	8/30/50/50	0/6/6/6
3	EUG	A	1562	-	-	4/4/4/5	0/1/1/1

All (10) bond length outliers are listed below:

Mol	Chain	Res	Type	Atoms	Z	Observed(Å)	Ideal(Å)
3	A	1562	EUG	C4-C3	5.13	1.49	1.40

*Continued on next page...*

Continued from previous page...

Mol	Chain	Res	Type	Atoms	Z	Observed(Å)	Ideal(Å)
3	B	1562	EUG	C4-C3	5.12	1.49	1.40
2	B	1561	FAD	C4X-N5	3.92	1.38	1.30
2	A	1561	FAD	C2A-N3A	3.92	1.38	1.32
2	A	1561	FAD	C4X-N5	3.87	1.38	1.30
2	B	1561	FAD	C2A-N3A	3.81	1.38	1.32
2	A	1561	FAD	C10-N1	3.17	1.39	1.33
2	B	1561	FAD	C2A-N1A	2.49	1.38	1.33
2	A	1561	FAD	C2A-N1A	2.34	1.38	1.33
2	B	1561	FAD	C10-N1	2.20	1.37	1.33

All (29) bond angle outliers are listed below:

Mol	Chain	Res	Type	Atoms	Z	Observed(°)	Ideal(°)
2	A	1561	FAD	N3A-C2A-N1A	-6.11	119.13	128.68
2	B	1561	FAD	N3A-C2A-N1A	-5.90	119.46	128.68
2	A	1561	FAD	C3B-C2B-C1B	4.29	107.44	100.98
3	A	1562	EUG	O3-C3-C4	3.81	120.08	114.57
3	B	1562	EUG	O3-C3-C4	3.77	120.03	114.57
2	A	1561	FAD	P-O3P-PA	-3.64	120.32	132.83
2	B	1561	FAD	C4X-C10-N10	3.49	121.58	116.48
2	B	1561	FAD	C3B-C2B-C1B	3.17	105.76	100.98
2	B	1561	FAD	C4-N3-C2	-2.98	120.13	125.64
2	B	1561	FAD	C10-C4X-N5	-2.94	118.62	124.86
3	B	1562	EUG	C9-O3-C3	2.90	121.90	117.53
2	A	1561	FAD	O4-C4-C4X	-2.83	119.10	126.60
2	A	1561	FAD	C4-N3-C2	-2.79	120.49	125.64
2	A	1561	FAD	C9A-C5X-N5	-2.65	119.55	122.43
2	A	1561	FAD	C10-C4X-N5	-2.60	119.33	124.86
2	B	1561	FAD	C4X-C4-N3	2.60	119.80	113.19
3	A	1562	EUG	O3-C3-C2	-2.57	119.69	124.12
2	B	1561	FAD	C4X-C10-N1	-2.55	118.80	124.73
2	A	1561	FAD	C4X-C4-N3	2.50	119.53	113.19
3	A	1562	EUG	C9-O3-C3	2.48	121.27	117.53
2	B	1561	FAD	C10-N1-C2	2.48	121.86	116.90
2	A	1561	FAD	C4X-C10-N1	-2.44	119.06	124.73
2	B	1561	FAD	C4-C4X-N5	2.40	121.65	118.23
2	A	1561	FAD	C5X-C9A-N10	2.33	120.36	117.95
2	A	1561	FAD	C4-C4X-C10	2.23	120.54	116.79
2	B	1561	FAD	C5A-C6A-N6A	-2.22	116.97	120.35
2	A	1561	FAD	C4X-C10-N10	2.12	119.59	116.48
2	A	1561	FAD	C5X-N5-C4X	2.05	121.48	118.07
2	B	1561	FAD	O5B-C5B-C4B	2.00	115.88	108.99



There are no chirality outliers.

All (24) torsion outliers are listed below:

Mol	Chain	Res	Type	Atoms
2	A	1561	FAD	C5B-O5B-PA-O3P
2	B	1561	FAD	C3'-C4'-C5'-O5'
2	B	1561	FAD	O4'-C4'-C5'-O5'
2	B	1561	FAD	C5'-O5'-P-O1P
3	A	1562	EUG	C2-C1-C7-C8
3	B	1562	EUG	C4-C3-O3-C9
3	A	1562	EUG	C6-C1-C7-C8
3	A	1562	EUG	C4-C3-O3-C9
3	B	1562	EUG	C2-C3-O3-C9
3	A	1562	EUG	C2-C3-O3-C9
3	B	1562	EUG	C6-C1-C7-C8
3	B	1562	EUG	C2-C1-C7-C8
2	A	1561	FAD	O4'-C4'-C5'-O5'
2	A	1561	FAD	C3'-C4'-C5'-O5'
2	A	1561	FAD	C4'-C5'-O5'-P
2	B	1561	FAD	C4'-C5'-O5'-P
2	B	1561	FAD	C5'-O5'-P-O3P
2	B	1561	FAD	P-O3P-PA-O1A
2	A	1561	FAD	C5B-O5B-PA-O1A
2	A	1561	FAD	C5B-O5B-PA-O2A
2	B	1561	FAD	C5'-O5'-P-O2P
2	A	1561	FAD	PA-O3P-P-O2P
2	B	1561	FAD	O4B-C4B-C5B-O5B
2	A	1561	FAD	PA-O3P-P-O1P

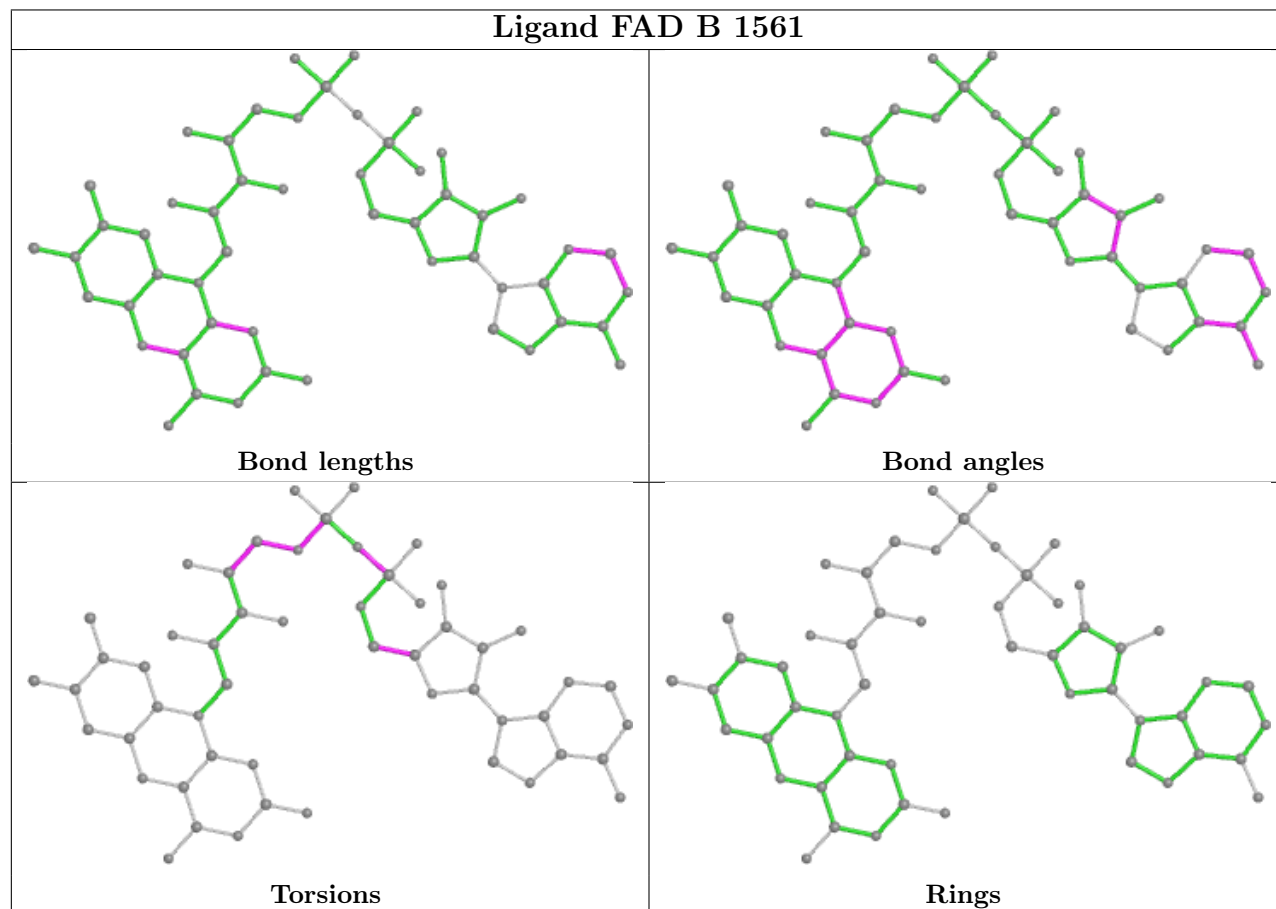
There are no ring outliers.

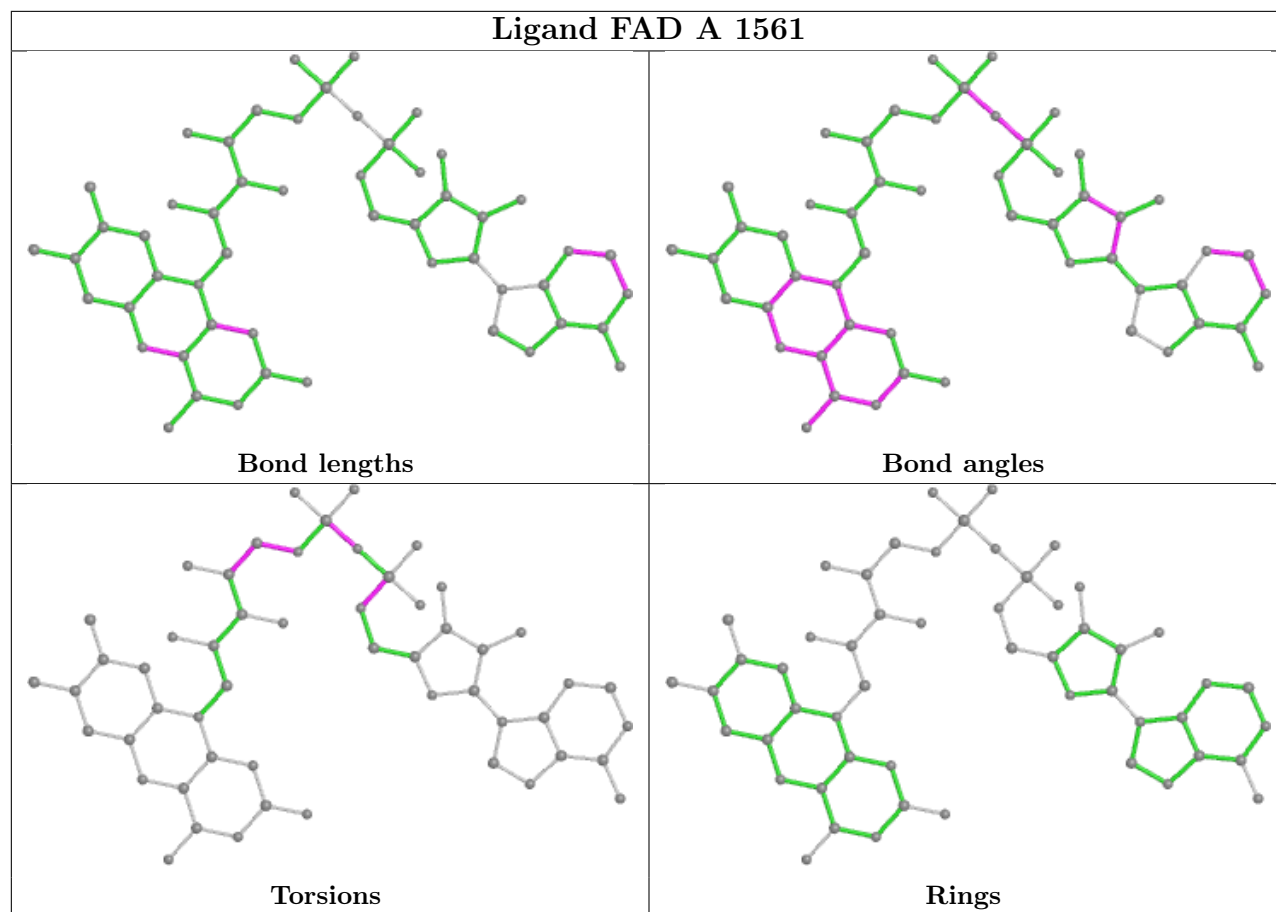
4 monomers are involved in 14 short contacts:

Mol	Chain	Res	Type	Clashes	Symm-Clashes
3	B	1562	EUG	1	0
2	B	1561	FAD	10	0
2	A	1561	FAD	2	0
3	A	1562	EUG	1	0

The following is a two-dimensional graphical depiction of Mogul quality analysis of bond lengths, bond angles, torsion angles, and ring geometry for all instances of the Ligand of Interest. In addition, ligands with molecular weight > 250 and outliers as shown on the validation Tables will also be included. For torsion angles, if less than 5% of the Mogul distribution of torsion angles is within 10 degrees of the torsion angle in question, then that torsion angle is considered an outlier. Any bond that is central to one or more torsion angles identified as an outlier by Mogul will be

highlighted in the graph. For rings, the root-mean-square deviation (RMSD) between the ring in question and similar rings identified by Mogul is calculated over all ring torsion angles. If the average RMSD is greater than 60 degrees and the minimal RMSD between the ring in question and any Mogul-identified rings is also greater than 60 degrees, then that ring is considered an outlier. The outliers are highlighted in purple. The color gray indicates Mogul did not find sufficient equivalents in the CSD to analyse the geometry.





## 5.7 Other polymers [i](#)

There are no such residues in this entry.

## 5.8 Polymer linkage issues [i](#)

There are no chain breaks in this entry.

## 6 Fit of model and data [i](#)

### 6.1 Protein, DNA and RNA chains [i](#)

In the following table, the column labelled ‘#RSRZ> 2’ contains the number (and percentage) of RSRZ outliers, followed by percent RSRZ outliers for the chain as percentile scores relative to all X-ray entries and entries of similar resolution. The OWAB column contains the minimum, median, 95<sup>th</sup> percentile and maximum values of the occupancy-weighted average B-factor per residue. The column labelled ‘Q< 0.9’ lists the number of (and percentage) of residues with an average occupancy less than 0.9.

Mol	Chain	Analysed	<RSRZ>	#RSRZ>2	OWAB(Å <sup>2</sup> )	Q<0.9
1	A	550/560 (98%)	-0.70	0 <b>100</b>   <b>100</b>	22, 37, 50, 62	0
1	B	550/560 (98%)	-0.36	1 (0%) <b>95</b>   <b>87</b>	40, 64, 90, 99	0
All	All	1100/1120 (98%)	-0.53	1 (0%) <b>95</b>   <b>89</b>	22, 49, 87, 99	0

All (1) RSRZ outliers are listed below:

Mol	Chain	Res	Type	RSRZ
1	B	6	GLU	2.2

### 6.2 Non-standard residues in protein, DNA, RNA chains [i](#)

There are no non-standard protein/DNA/RNA residues in this entry.

### 6.3 Carbohydrates [i](#)

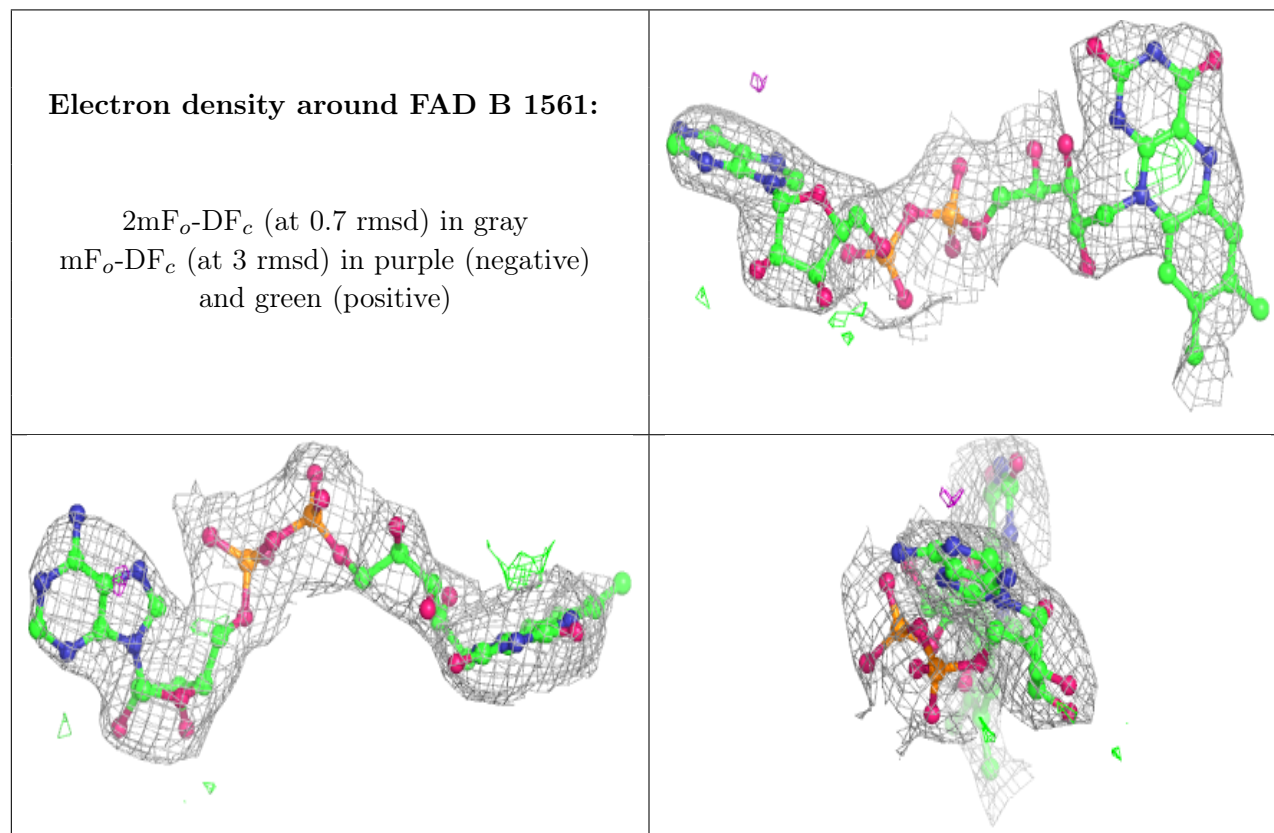
There are no monosaccharides in this entry.

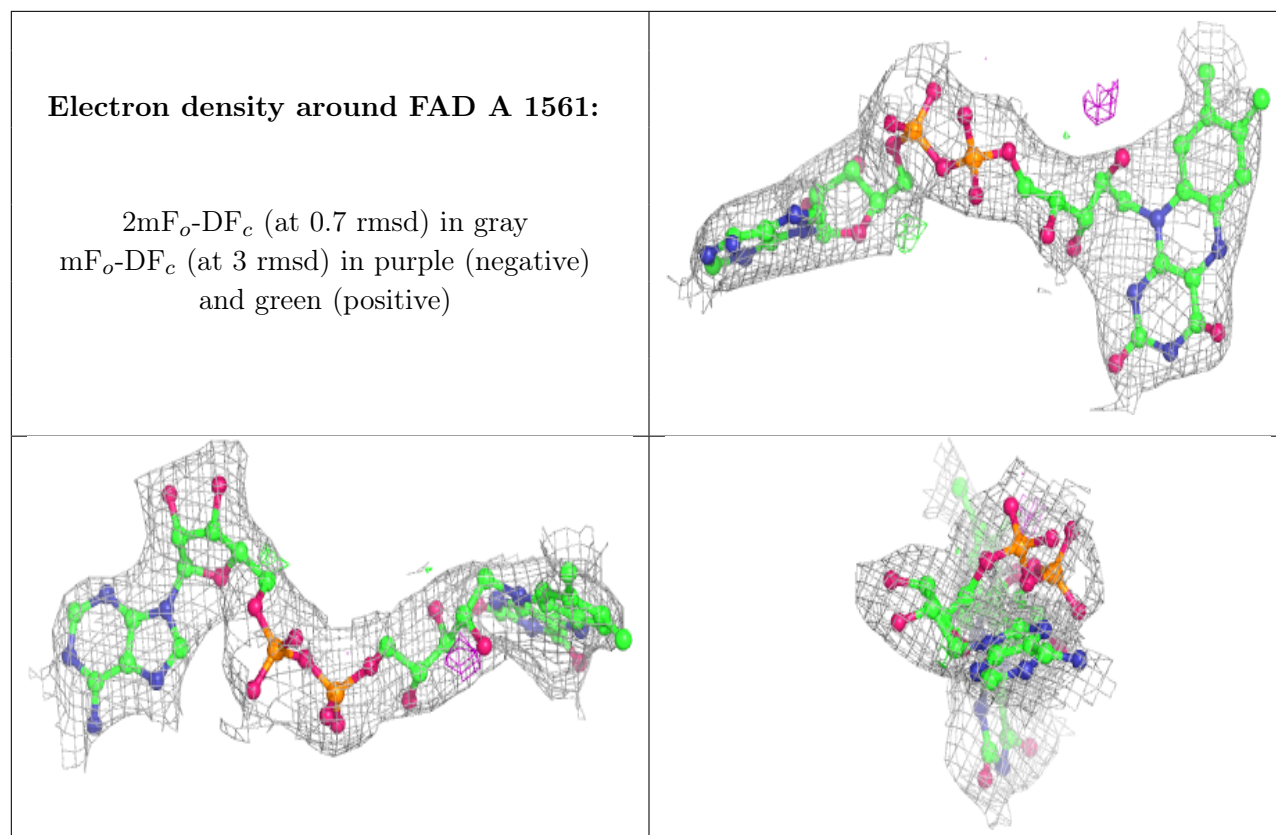
### 6.4 Ligands [i](#)

In the following table, the Atoms column lists the number of modelled atoms in the group and the number defined in the chemical component dictionary. The B-factors column lists the minimum, median, 95<sup>th</sup> percentile and maximum values of B factors of atoms in the group. The column labelled ‘Q< 0.9’ lists the number of atoms with occupancy less than 0.9.

Mol	Type	Chain	Res	Atoms	RSCC	RSR	B-factors(Å <sup>2</sup> )	Q<0.9
3	EUG	A	1562	11/12	0.90	0.25	66,68,70,71	0
2	FAD	B	1561	53/53	0.93	0.21	63,70,83,83	0
2	FAD	A	1561	53/53	0.95	0.19	54,60,69,71	0
3	EUG	B	1562	11/12	0.97	0.25	60,62,63,63	0

The following is a graphical depiction of the model fit to experimental electron density of all instances of the Ligand of Interest. In addition, ligands with molecular weight > 250 and outliers as shown on the geometry validation Tables will also be included. Each fit is shown from different orientation to approximate a three-dimensional view.





## 6.5 Other polymers [i](#)

There are no such residues in this entry.