



Full wwPDB X-ray Structure Validation Report ⓘ

Apr 1, 2024 – 10:03 AM EDT

PDB ID : 8VZ9
Title : Crystal structure of mouse MAIT M2A TCR-MR1-5-OP-RU complex
Authors : Ciacchi, L.; Rossjohn, J.; Awad, W.
Deposited on : 2024-02-11
Resolution : 3.40 Å(reported)

This is a Full wwPDB X-ray Structure Validation Report for a publicly released PDB entry.

We welcome your comments at validation@mail.wwpdb.org

A user guide is available at

<https://www.wwpdb.org/validation/2017/XrayValidationReportHelp>

with specific help available everywhere you see the ⓘ symbol.

The types of validation reports are described at

<http://www.wwpdb.org/validation/2017/FAQs#types>.

The following versions of software and data (see [references ⓘ](#)) were used in the production of this report:

MolProbity : 4.02b-467
Mogul : 1.8.5 (274361), CSD as541be (2020)
Xtriage (Phenix) : 1.13
EDS : 2.36.1
buster-report : 1.1.7 (2018)
Percentile statistics : 20191225.v01 (using entries in the PDB archive December 25th 2019)
Refmac : 5.8.0158
CCP4 : 7.0.044 (Gargrove)
Ideal geometry (proteins) : Engh & Huber (2001)
Ideal geometry (DNA, RNA) : Parkinson et al. (1996)
Validation Pipeline (wwPDB-VP) : 2.36.1

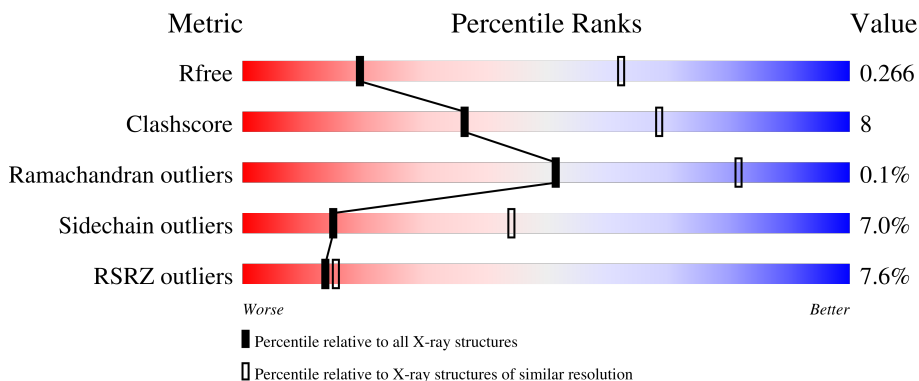
1 Overall quality at a glance

The following experimental techniques were used to determine the structure:

X-RAY DIFFRACTION

The reported resolution of this entry is 3.40 Å.

Percentile scores (ranging between 0-100) for global validation metrics of the entry are shown in the following graphic. The table shows the number of entries on which the scores are based.



Metric	Whole archive (#Entries)	Similar resolution (#Entries, resolution range(Å))
R_{free}	130704	1026 (3.48-3.32)
Clashscore	141614	1055 (3.48-3.32)
Ramachandran outliers	138981	1038 (3.48-3.32)
Sidechain outliers	138945	1038 (3.48-3.32)
RSRZ outliers	127900	2173 (3.50-3.30)

The table below summarises the geometric issues observed across the polymeric chains and their fit to the electron density. The red, orange, yellow and green segments of the lower bar indicate the fraction of residues that contain outliers for ≥ 3 , 2, 1 and 0 types of geometric quality criteria respectively. A grey segment represents the fraction of residues that are not modelled. The numeric value for each fraction is indicated below the corresponding segment, with a dot representing fractions $\leq 5\%$. The upper red bar (where present) indicates the fraction of residues that have poor fit to the electron density. The numeric value is given above the bar.

Mol	Chain	Length	Quality of chain
1	A	271	 79% 18% ..
2	B	100	 78% 18% ..
3	C	204	 73% 13% • 10%
4	D	246	 74% 23% •

The following table lists non-polymeric compounds, carbohydrate monomers and non-standard

residues in protein, DNA, RNA chains that are outliers for geometric or electron-density-fit criteria:

Mol	Type	Chain	Res	Chirality	Geometry	Clashes	Electron density
6	2LJ	A	304	X	-	-	-

2 Entry composition [i](#)

There are 6 unique types of molecules in this entry. The entry contains 5926 atoms, of which 0 are hydrogens and 0 are deuteriums.

In the tables below, the ZeroOcc column contains the number of atoms modelled with zero occupancy, the AltConf column contains the number of residues with at least one atom in alternate conformation and the Trace column contains the number of residues modelled with at most 2 atoms.

- Molecule 1 is a protein called Major histocompatibility complex class I-related gene protein.

Mol	Chain	Residues	Atoms					ZeroOcc	AltConf	Trace
			Total	C	N	O	S			
1	A	265	2110	1353	366	381	10	0	1	0

There is a discrepancy between the modelled and reference sequences:

Chain	Residue	Modelled	Actual	Comment	Reference
A	261	SER	CYS	conflict	UNP Q8HWB0

- Molecule 2 is a protein called Beta-2-microglobulin.

Mol	Chain	Residues	Atoms					ZeroOcc	AltConf	Trace
			Total	C	N	O	S			
2	B	99	790	505	134	145	6	0	0	0

- Molecule 3 is a protein called Mouse MAIT TRAV1-TRAJ33 a-chain.

Mol	Chain	Residues	Atoms					ZeroOcc	AltConf	Trace
			Total	C	N	O	S			
3	C	183	1291	821	213	252	5	0	0	0

- Molecule 4 is a protein called Mouse MAIT MBV13-2A b-chain.

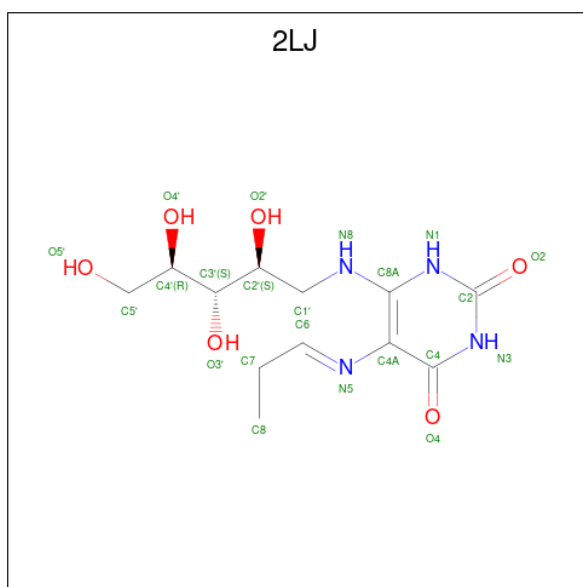
Mol	Chain	Residues	Atoms					ZeroOcc	AltConf	Trace
			Total	C	N	O	S			
4	D	240	1701	1084	299	312	6	0	0	0

- Molecule 5 is GLYCEROL (three-letter code: GOL) (formula: C₃H₈O₃).



Mol	Chain	Residues	Atoms	ZeroOcc	AltConf
5	A	1	Total C O 6 3 3	0	0
5	A	1	Total C O 6 3 3	0	0

- Molecule 6 is 1-deoxy-1-({2,6-dioxo-5-[(E)-propylideneamino]-1,2,3,6-tetrahydropyrimidin-4-yl}amino)-D-ribitol (three-letter code: 2LJ) (formula: C₁₂H₂₀N₄O₆) (labeled as "Ligand of Interest" by depositor).

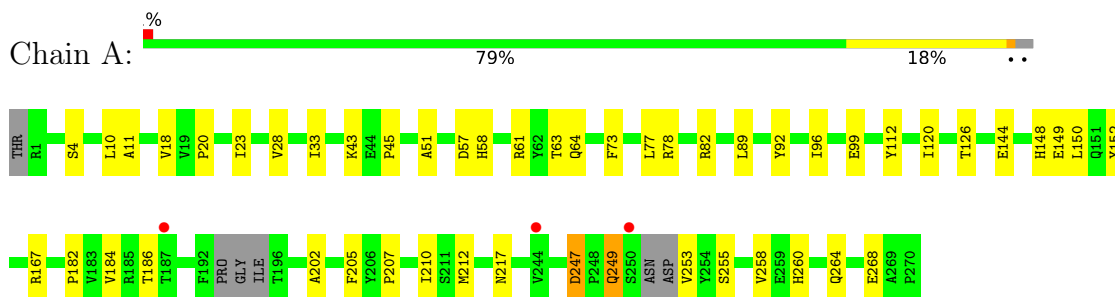


Mol	Chain	Residues	Atoms	ZeroOcc	AltConf
6	A	1	Total C N O 22 12 4 6	0	0

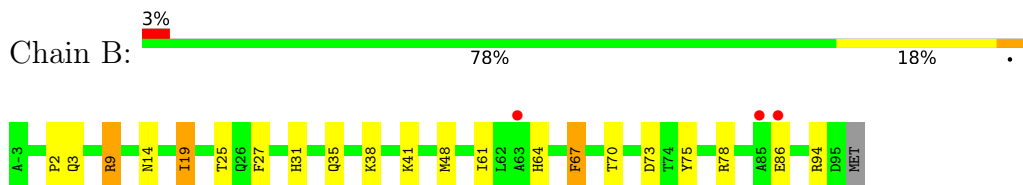
3 Residue-property plots [i](#)

These plots are drawn for all protein, RNA, DNA and oligosaccharide chains in the entry. The first graphic for a chain summarises the proportions of the various outlier classes displayed in the second graphic. The second graphic shows the sequence view annotated by issues in geometry and electron density. Residues are color-coded according to the number of geometric quality criteria for which they contain at least one outlier: green = 0, yellow = 1, orange = 2 and red = 3 or more. A red dot above a residue indicates a poor fit to the electron density ($RSRZ > 2$). Stretches of 2 or more consecutive residues without any outlier are shown as a green connector. Residues present in the sample, but not in the model, are shown in grey.

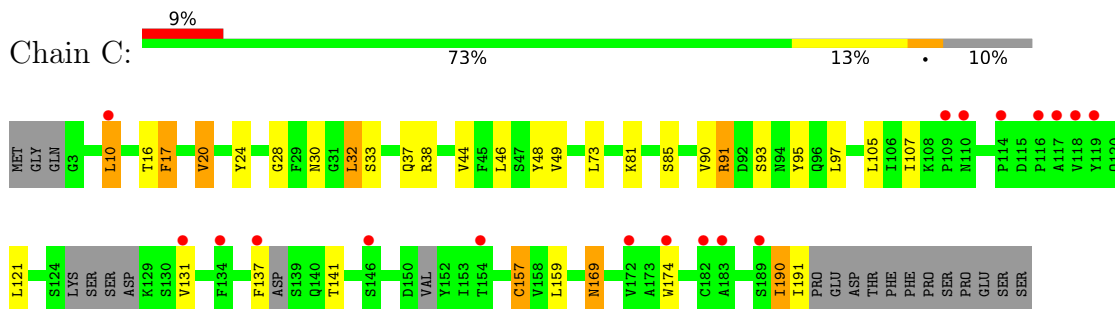
- Molecule 1: Major histocompatibility complex class I-related gene protein



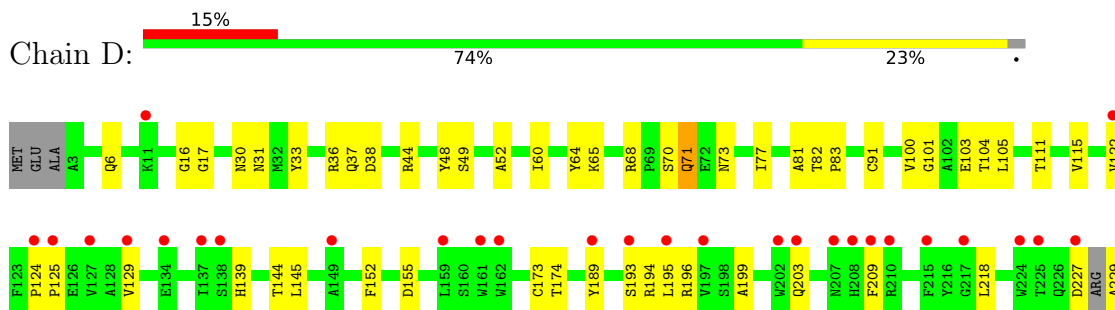
- Molecule 2: Beta-2-microglobulin

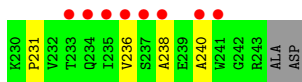


- Molecule 3: Mouse MAIT TRAV1-TRAJ33 a-chain



- Molecule 4: Mouse MAIT MBV13-2A b-chain





4 Data and refinement statistics

Property	Value	Source
Space group	P 2 21 21	Depositor
Cell constants a, b, c, α , β , γ	64.53Å 84.26Å 177.58Å 90.00° 90.00° 90.00°	Depositor
Resolution (Å)	49.22 – 3.40 49.22 – 3.40	Depositor EDS
% Data completeness (in resolution range)	99.9 (49.22-3.40) 95.5 (49.22-3.40)	Depositor EDS
R_{merge}	(Not available)	Depositor
R_{sym}	(Not available)	Depositor
$\langle I/\sigma(I) \rangle$ ¹	3.05 (at 3.40Å)	Xtrriage
Refinement program	PHENIX (1.20.1_4487: ???)	Depositor
R, R_{free}	0.242 , 0.263 0.244 , 0.266	Depositor DCC
R_{free} test set	1390 reflections (10.00%)	wwPDB-VP
Wilson B-factor (Å ²)	61.2	Xtrriage
Anisotropy	0.563	Xtrriage
Bulk solvent k_{sol} (e/Å ³), B_{sol} (Å ²)	0.32 , 42.4	EDS
L-test for twinning ²	$\langle L \rangle = 0.44$, $\langle L^2 \rangle = 0.27$	Xtrriage
Estimated twinning fraction	No twinning to report.	Xtrriage
F_o, F_c correlation	0.85	EDS
Total number of atoms	5926	wwPDB-VP
Average B, all atoms (Å ²)	69.0	wwPDB-VP

Xtrriage's analysis on translational NCS is as follows: *The largest off-origin peak in the Patterson function is 5.29% of the height of the origin peak. No significant pseudotranslation is detected.*

¹Intensities estimated from amplitudes.

²Theoretical values of $\langle |L| \rangle$, $\langle L^2 \rangle$ for acentric reflections are 0.5, 0.333 respectively for untwinned datasets, and 0.375, 0.2 for perfectly twinned datasets.

5 Model quality [i](#)

5.1 Standard geometry [i](#)

Bond lengths and bond angles in the following residue types are not validated in this section: 2LJ, GOL

The Z score for a bond length (or angle) is the number of standard deviations the observed value is removed from the expected value. A bond length (or angle) with $|Z| > 5$ is considered an outlier worth inspection. RMSZ is the root-mean-square of all Z scores of the bond lengths (or angles).

Mol	Chain	Bond lengths		Bond angles	
		RMSZ	# Z >5	RMSZ	# Z >5
1	A	0.25	0/2179	0.48	0/2974
2	B	0.24	0/816	0.47	0/1115
3	C	0.26	0/1316	0.49	0/1803
4	D	0.26	0/1749	0.48	0/2406
All	All	0.25	0/6060	0.48	0/8298

There are no bond length outliers.

There are no bond angle outliers.

There are no chirality outliers.

There are no planarity outliers.

5.2 Too-close contacts [i](#)

In the following table, the Non-H and H(model) columns list the number of non-hydrogen atoms and hydrogen atoms in the chain respectively. The H(added) column lists the number of hydrogen atoms added and optimized by MolProbity. The Clashes column lists the number of clashes within the asymmetric unit, whereas Symm-Clashes lists symmetry-related clashes.

Mol	Chain	Non-H	H(model)	H(added)	Clashes	Symm-Clashes
1	A	2110	0	1940	27	0
2	B	790	0	741	16	0
3	C	1291	0	1110	21	0
4	D	1701	0	1492	32	0
5	A	12	0	16	0	0
6	A	22	0	18	4	0
All	All	5926	0	5317	89	0

The all-atom clashscore is defined as the number of clashes found per 1000 atoms (including hydrogen atoms). The all-atom clashscore for this structure is 8.

All (89) close contacts within the same asymmetric unit are listed below, sorted by their clash magnitude.

Atom-1	Atom-2	Interatomic distance (Å)	Clash overlap (Å)
1:A:43:LYS:H	1:A:63:THR:HG22	1.40	0.86
2:B:19:ILE:HD11	2:B:64:HIS:HB2	1.62	0.81
3:C:38:ARG:NH2	3:C:81:LYS:O	2.28	0.67
1:A:77:LEU:HD13	1:A:92:TYR:HB2	1.77	0.66
3:C:32:LEU:HD13	3:C:90:VAL:HG22	1.78	0.66
1:A:152:TYR:OH	6:A:304:2LJ:O4'	2.15	0.65
4:D:38:ASP:OD2	4:D:44:ARG:NH2	2.30	0.64
1:A:89:LEU:HD21	2:B:31:HIS:CD2	2.31	0.64
1:A:212:MET:HG2	1:A:258:VAL:HG22	1.81	0.62
2:B:9:ARG:HB3	2:B:19:ILE:HG23	1.81	0.62
4:D:144:THR:HA	4:D:196:ARG:HA	1.83	0.60
4:D:209:PHE:HB2	4:D:240:ALA:HB3	1.84	0.60
1:A:20:PRO:HD2	1:A:23:ILE:HD11	1.85	0.59
1:A:64:GLN:OE1	4:D:48:TYR:OH	2.20	0.59
2:B:70:THR:O	2:B:94:ARG:NH1	2.35	0.58
2:B:48:MET:HB3	2:B:61:ILE:HD11	1.84	0.58
3:C:169:ASN:OD1	3:C:169:ASN:N	2.36	0.58
3:C:91:ARG:HD3	4:D:101:GLY:HA2	1.84	0.58
3:C:28:GLY:HA3	3:C:93:SER:HB3	1.86	0.58
3:C:20:VAL:HG23	3:C:73:LEU:HB3	1.86	0.57
2:B:38:LYS:HD3	2:B:41:LYS:HE2	1.89	0.54
3:C:137:PHE:HB2	3:C:141:THR:HG21	1.89	0.54
4:D:129:VAL:HG23	4:D:238:ALA:HB3	1.88	0.54
1:A:144:GLU:HA	1:A:150:LEU:HD11	1.91	0.53
2:B:38:LYS:NZ	2:B:73:ASP:OD2	2.42	0.53
3:C:10:LEU:HB3	3:C:105:LEU:HD12	1.90	0.53
3:C:24:TYR:HB3	3:C:90:VAL:HG21	1.90	0.53
4:D:44:ARG:HD2	4:D:60:ILE:HD11	1.91	0.53
1:A:11:ALA:HB2	1:A:73:PHE:HD2	1.75	0.52
1:A:148:HIS:ND1	3:C:48:TYR:HB3	2.24	0.52
4:D:36:ARG:NH1	4:D:64:TYR:OH	2.42	0.52
2:B:9:ARG:NH1	2:B:19:ILE:HG12	2.25	0.52
1:A:186:THR:HG21	1:A:268:GLU:O	2.10	0.51
6:A:304:2LJ:O4'	3:C:95:TYR:OH	2.21	0.51
3:C:37:GLN:OE1	4:D:37:GLN:NE2	2.41	0.51
4:D:6:GLN:OE1	4:D:91:CYS:N	2.40	0.51
3:C:17:PHE:H	3:C:17:PHE:HD1	1.58	0.50
3:C:190:ILE:HG13	3:C:191:ILE:N	2.27	0.50
4:D:83:PRO:HA	4:D:115:VAL:HB	1.94	0.49
1:A:10:LEU:HD23	1:A:23:ILE:HD12	1.95	0.49

Continued on next page...

Continued from previous page...

Atom-1	Atom-2	Interatomic distance (Å)	Clash overlap (Å)
2:B:35:GLN:O	2:B:78:ARG:N	2.44	0.49
1:A:58:HIS:O	1:A:58:HIS:ND1	2.45	0.49
4:D:17:GLY:H	4:D:81:ALA:HB3	1.77	0.48
4:D:152:PHE:HE2	4:D:155:ASP:HA	1.78	0.48
1:A:58:HIS:HE1	6:A:304:2LJ:H2	1.78	0.48
4:D:145:LEU:N	4:D:195:LEU:O	2.47	0.48
2:B:2:PRO:HB3	2:B:27:PHE:HB3	1.95	0.48
3:C:157:CYS:HB3	4:D:173:CYS:SG	2.54	0.48
4:D:52:ALA:HA	4:D:68:ARG:HD3	1.96	0.47
1:A:45:PRO:HG3	1:A:51:ALA:HB2	1.95	0.47
3:C:131:VAL:HG12	3:C:174:TRP:HB3	1.96	0.47
3:C:91:ARG:NH2	3:C:97:LEU:HG	2.29	0.47
4:D:174:THR:HG23	4:D:193:SER:HB2	1.96	0.47
4:D:227:ASP:O	4:D:229:ALA:N	2.49	0.46
1:A:112:TYR:HB2	1:A:120:ILE:HG22	1.98	0.46
1:A:207:PRO:HD2	1:A:260:HIS:CE1	2.51	0.46
1:A:78:ARG:O	1:A:82:ARG:HG2	2.16	0.46
1:A:247:ASP:O	1:A:249:GLN:N	2.49	0.45
3:C:91:ARG:HH21	3:C:97:LEU:HG	1.82	0.45
3:C:10:LEU:HD13	3:C:20:VAL:HG12	1.99	0.45
4:D:30:ASN:HD22	4:D:71:GLN:HE22	1.65	0.45
1:A:89:LEU:HD21	2:B:31:HIS:NE2	2.31	0.44
4:D:103:GLU:HG2	4:D:105:LEU:HD12	1.99	0.44
4:D:122:VAL:HG21	4:D:218:LEU:HD21	1.99	0.44
4:D:125:PRO:HG2	4:D:236:VAL:HG21	1.99	0.44
4:D:6:GLN:NE2	4:D:111:THR:OG1	2.51	0.44
4:D:65:LYS:O	4:D:77:ILE:N	2.40	0.44
4:D:33:TYR:OH	4:D:103:GLU:OE2	2.31	0.43
1:A:205:PHE:HB2	1:A:260:HIS:NE2	2.32	0.43
2:B:94:ARG:H	2:B:94:ARG:HG2	1.70	0.43
4:D:124:PRO:HD3	4:D:231:PRO:HB3	2.00	0.43
1:A:210:ILE:HG13	1:A:260:HIS:HB2	1.99	0.43
6:A:304:2LJ:O4	6:A:304:2LJ:H1	2.18	0.43
3:C:30:ASN:HB2	3:C:91:ARG:HB3	2.01	0.43
1:A:28:VAL:HG23	1:A:33:ILE:HD13	2.01	0.43
1:A:182:PRO:HB2	1:A:202:ALA:HB1	2.00	0.42
1:A:217:ASN:N	1:A:253:VAL:O	2.53	0.42
4:D:209:PHE:O	4:D:240:ALA:N	2.52	0.42
4:D:199:ALA:O	4:D:203:GLN:HG2	2.19	0.42
1:A:184:VAL:HG11	1:A:258:VAL:HG21	2.01	0.42
2:B:38:LYS:O	2:B:41:LYS:HG2	2.20	0.41

Continued on next page...

Continued from previous page...

Atom-1	Atom-2	Interatomic distance (Å)	Clash overlap (Å)
2:B:19:ILE:HD11	2:B:64:HIS:CB	2.41	0.41
4:D:16:GLY:N	4:D:81:ALA:O	2.49	0.41
2:B:14:ASN:OD1	2:B:14:ASN:N	2.53	0.41
1:A:4:SER:HA	1:A:99:GLU:HA	2.03	0.41
2:B:67:PHE:HD2	2:B:75:TYR:CZ	2.39	0.41
4:D:68:ARG:HG2	4:D:70:SER:O	2.22	0.41
3:C:91:ARG:NH1	4:D:100:VAL:O	2.54	0.40
4:D:31:ASN:HA	4:D:49:SER:O	2.22	0.40

There are no symmetry-related clashes.

5.3 Torsion angles [i](#)

5.3.1 Protein backbone [i](#)

In the following table, the Percentiles column shows the percent Ramachandran outliers of the chain as a percentile score with respect to all X-ray entries followed by that with respect to entries of similar resolution.

The Analysed column shows the number of residues for which the backbone conformation was analysed, and the total number of residues.

Mol	Chain	Analysed	Favoured	Allowed	Outliers	Percentiles	
1	A	260/271 (96%)	248 (95%)	11 (4%)	1 (0%)	34	67
2	B	97/100 (97%)	96 (99%)	1 (1%)	0	100	100
3	C	175/204 (86%)	160 (91%)	15 (9%)	0	100	100
4	D	236/246 (96%)	219 (93%)	17 (7%)	0	100	100
All	All	768/821 (94%)	723 (94%)	44 (6%)	1 (0%)	51	82

All (1) Ramachandran outliers are listed below:

Mol	Chain	Res	Type
1	A	18	VAL

5.3.2 Protein sidechains [i](#)

In the following table, the Percentiles column shows the percent sidechain outliers of the chain as a percentile score with respect to all X-ray entries followed by that with respect to entries of similar resolution.

The Analysed column shows the number of residues for which the sidechain conformation was analysed, and the total number of residues.

Mol	Chain	Analysed	Rotameric	Outliers	Percentiles	
1	A	213/240 (89%)	203 (95%)	10 (5%)	26	57
2	B	86/93 (92%)	80 (93%)	6 (7%)	15	44
3	C	120/182 (66%)	103 (86%)	17 (14%)	3	13
4	D	154/208 (74%)	147 (96%)	7 (4%)	27	58
All	All	573/723 (79%)	533 (93%)	40 (7%)	15	44

All (40) residues with a non-rotameric sidechain are listed below:

Mol	Chain	Res	Type
1	A	57	ASP
1	A	61	ARG
1	A	96	ILE
1	A	126	THR
1	A	149	GLU
1	A	167	ARG
1	A	247	ASP
1	A	249	GLN
1	A	255	SER
1	A	264	GLN
2	B	3	GLN
2	B	9	ARG
2	B	19	ILE
2	B	25	THR
2	B	67	PHE
2	B	86	GLU
3	C	10	LEU
3	C	16	THR
3	C	17	PHE
3	C	20	VAL
3	C	32	LEU
3	C	33	SER
3	C	44	VAL
3	C	46	LEU
3	C	49	VAL
3	C	85	SER
3	C	91	ARG
3	C	107	ILE
3	C	121	LEU
3	C	157	CYS

Continued on next page...

Continued from previous page...

Mol	Chain	Res	Type
3	C	159	LEU
3	C	169	ASN
3	C	190	ILE
4	D	71	GLN
4	D	73	ASN
4	D	82	THR
4	D	104	THR
4	D	139	HIS
4	D	189	TYR
4	D	194	ARG

Sometimes sidechains can be flipped to improve hydrogen bonding and reduce clashes. All (5) such sidechains are listed below:

Mol	Chain	Res	Type
1	A	31	HIS
1	A	249	GLN
2	B	3	GLN
3	C	36	GLN
4	D	71	GLN

5.3.3 RNA [i](#)

There are no RNA molecules in this entry.

5.4 Non-standard residues in protein, DNA, RNA chains [i](#)

There are no non-standard protein/DNA/RNA residues in this entry.

5.5 Carbohydrates [i](#)

There are no monosaccharides in this entry.

5.6 Ligand geometry [i](#)

3 ligands are modelled in this entry.

In the following table, the Counts columns list the number of bonds (or angles) for which Mogul statistics could be retrieved, the number of bonds (or angles) that are observed in the model and the number of bonds (or angles) that are defined in the Chemical Component Dictionary. The

Link column lists molecule types, if any, to which the group is linked. The Z score for a bond length (or angle) is the number of standard deviations the observed value is removed from the expected value. A bond length (or angle) with $|Z| > 2$ is considered an outlier worth inspection. RMSZ is the root-mean-square of all Z scores of the bond lengths (or angles).

Mol	Type	Chain	Res	Link	Bond lengths			Bond angles		
					Counts	RMSZ	# Z > 2	Counts	RMSZ	# Z > 2
5	GOL	A	303	-	5,5,5	0.91	0	5,5,5	0.98	0
6	2LJ	A	304	1	21,22,22	1.13	2 (9%)	21,29,29	0.45	0
5	GOL	A	302	-	5,5,5	0.94	0	5,5,5	0.99	0

In the following table, the Chirals column lists the number of chiral outliers, the number of chiral centers analysed, the number of these observed in the model and the number defined in the Chemical Component Dictionary. Similar counts are reported in the Torsion and Rings columns. '-' means no outliers of that kind were identified.

Mol	Type	Chain	Res	Link	Chirals	Torsions	Rings
5	GOL	A	303	-	-	0/4/4/4	-
6	2LJ	A	304	1	3/3/3/5	4/18/19/19	0/1/1/1
5	GOL	A	302	-	-	0/4/4/4	-

All (2) bond length outliers are listed below:

Mol	Chain	Res	Type	Atoms	Z	Observed(Å)	Ideal(Å)
6	A	304	2LJ	C8A-N8	3.95	1.38	1.32
6	A	304	2LJ	C7-C6	-2.88	1.46	1.49

There are no bond angle outliers.

All (3) chirality outliers are listed below:

Mol	Chain	Res	Type	Atom
6	A	304	2LJ	C4'
6	A	304	2LJ	C2'
6	A	304	2LJ	C3'

All (4) torsion outliers are listed below:

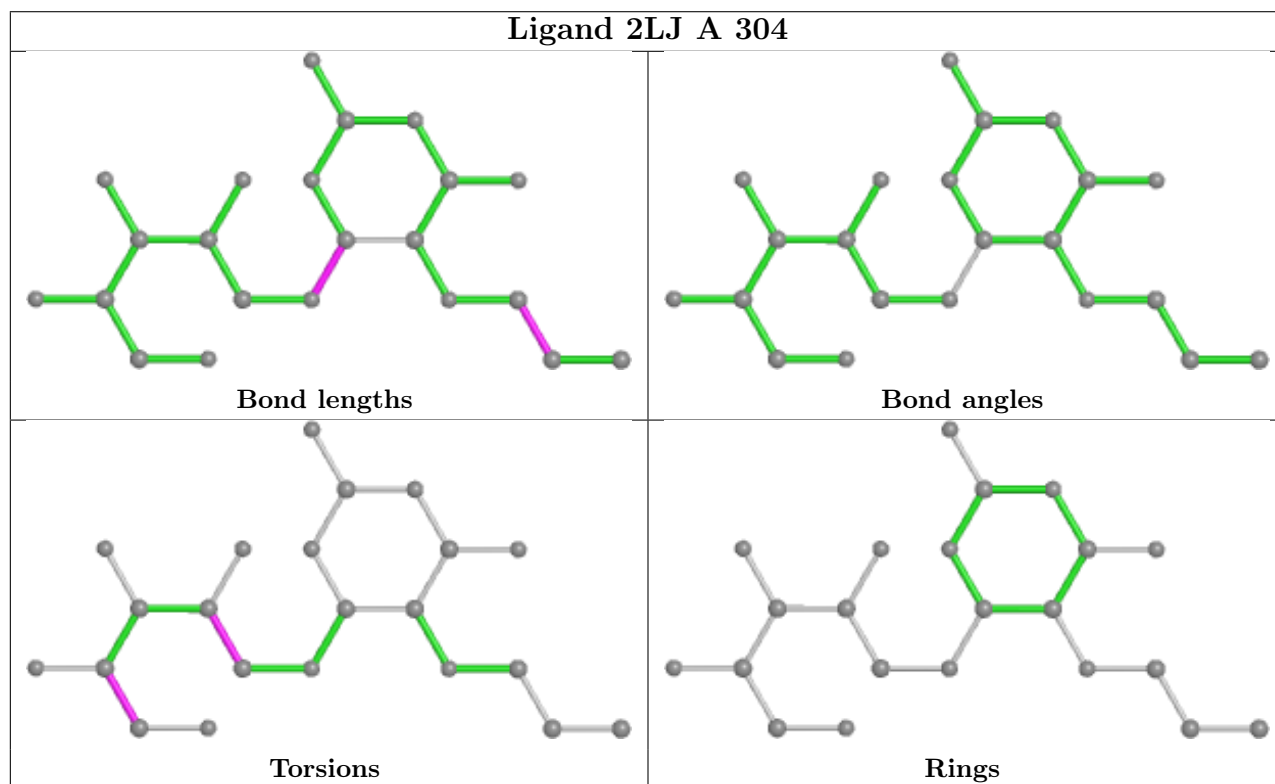
Mol	Chain	Res	Type	Atoms
6	A	304	2LJ	N8-C1'-C2'-O2'
6	A	304	2LJ	O4'-C4'-C5'-O5'
6	A	304	2LJ	C3'-C4'-C5'-O5'
6	A	304	2LJ	N8-C1'-C2'-C3'

There are no ring outliers.

1 monomer is involved in 4 short contacts:

Mol	Chain	Res	Type	Clashes	Symm-Clashes
6	A	304	2LJ	4	0

The following is a two-dimensional graphical depiction of Mogul quality analysis of bond lengths, bond angles, torsion angles, and ring geometry for all instances of the Ligand of Interest. In addition, ligands with molecular weight > 250 and outliers as shown on the validation Tables will also be included. For torsion angles, if less than 5% of the Mogul distribution of torsion angles is within 10 degrees of the torsion angle in question, then that torsion angle is considered an outlier. Any bond that is central to one or more torsion angles identified as an outlier by Mogul will be highlighted in the graph. For rings, the root-mean-square deviation (RMSD) between the ring in question and similar rings identified by Mogul is calculated over all ring torsion angles. If the average RMSD is greater than 60 degrees and the minimal RMSD between the ring in question and any Mogul-identified rings is also greater than 60 degrees, then that ring is considered an outlier. The outliers are highlighted in purple. The color gray indicates Mogul did not find sufficient equivalents in the CSD to analyse the geometry.



5.7 Other polymers [\(i\)](#)

There are no such residues in this entry.

5.8 Polymer linkage issues

There are no chain breaks in this entry.

6 Fit of model and data

6.1 Protein, DNA and RNA chains

In the following table, the column labelled ‘#RSRZ> 2’ contains the number (and percentage) of RSRZ outliers, followed by percent RSRZ outliers for the chain as percentile scores relative to all X-ray entries and entries of similar resolution. The OWAB column contains the minimum, median, 95th percentile and maximum values of the occupancy-weighted average B-factor per residue. The column labelled ‘Q< 0.9’ lists the number of (and percentage) of residues with an average occupancy less than 0.9.

Mol	Chain	Analysed	<RSRZ>	#RSRZ>2	OWAB(Å ²)	Q<0.9
1	A	265/271 (97%)	0.23	3 (1%) 80 79	36, 52, 73, 101	0
2	B	99/100 (99%)	0.48	3 (3%) 50 49	46, 65, 84, 92	0
3	C	183/204 (89%)	0.63	18 (9%) 7 9	42, 67, 123, 131	0
4	D	240/246 (97%)	0.84	36 (15%) 2 2	45, 87, 126, 156	0
All	All	787/821 (95%)	0.54	60 (7%) 13 15	36, 64, 121, 156	0

All (60) RSRZ outliers are listed below:

Mol	Chain	Res	Type	RSRZ
3	C	118	VAL	4.4
4	D	209	PHE	4.2
4	D	124	PRO	4.1
3	C	109	PRO	4.0
3	C	117	ALA	4.0
3	C	182	CYS	3.8
4	D	208	HIS	3.8
3	C	131	VAL	3.7
3	C	154	THR	3.6
4	D	224	TRP	3.6
4	D	225	THR	3.6
4	D	207	ASN	3.4
4	D	215	PHE	3.4
4	D	240	ALA	3.3
4	D	236	VAL	3.3
4	D	233	THR	3.2
4	D	161	TRP	3.2
3	C	119	TYR	3.1
4	D	11	LYS	3.1
4	D	195	LEU	3.0
3	C	137	PHE	3.0

Continued on next page...

Continued from previous page...

Mol	Chain	Res	Type	RSRZ
4	D	241	TRP	3.0
4	D	129	VAL	3.0
4	D	202	TRP	2.9
3	C	174	TRP	2.9
2	B	85	ALA	2.9
4	D	138	SER	2.8
1	A	187	THR	2.8
3	C	146	SER	2.8
4	D	217	GLY	2.8
4	D	159	LEU	2.8
4	D	162	TRP	2.7
3	C	116	PRO	2.7
1	A	244	VAL	2.6
4	D	237	SER	2.6
4	D	189	TYR	2.5
4	D	149	ALA	2.5
4	D	234	GLN	2.5
4	D	193	SER	2.5
4	D	125	PRO	2.4
3	C	134	PHE	2.4
3	C	110	ASN	2.4
4	D	197	VAL	2.3
4	D	134	GLU	2.3
2	B	63	ALA	2.3
3	C	10	LEU	2.3
4	D	238	ALA	2.3
3	C	172	VAL	2.3
3	C	114	PRO	2.2
4	D	137	ILE	2.2
3	C	183	ALA	2.2
4	D	203	GLN	2.2
4	D	227	ASP	2.2
4	D	235	ILE	2.2
1	A	250	SER	2.1
4	D	210	ARG	2.1
3	C	189	SER	2.1
4	D	122	VAL	2.1
4	D	127	VAL	2.0
2	B	86	GLU	2.0

6.2 Non-standard residues in protein, DNA, RNA chains [i](#)

There are no non-standard protein/DNA/RNA residues in this entry.

6.3 Carbohydrates [i](#)

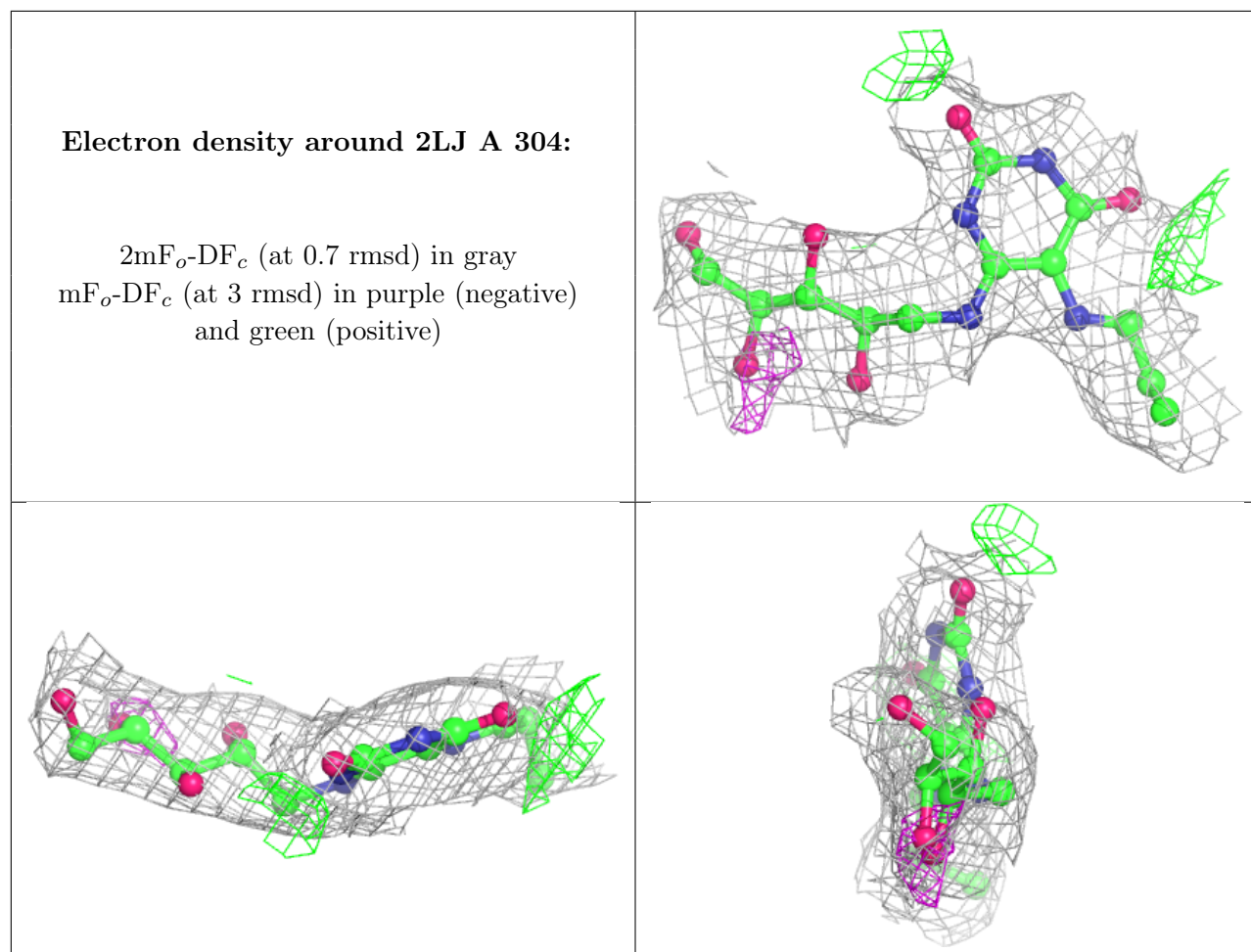
There are no monosaccharides in this entry.

6.4 Ligands [i](#)

In the following table, the Atoms column lists the number of modelled atoms in the group and the number defined in the chemical component dictionary. The B-factors column lists the minimum, median, 95th percentile and maximum values of B factors of atoms in the group. The column labelled 'Q< 0.9' lists the number of atoms with occupancy less than 0.9.

Mol	Type	Chain	Res	Atoms	RSCC	RSR	B-factors(Å ²)	Q<0.9
5	GOL	A	303	6/6	0.89	0.25	59,60,62,62	0
6	2LJ	A	304	22/22	0.90	0.22	40,41,41,42	0
5	GOL	A	302	6/6	0.91	0.35	47,47,48,48	0

The following is a graphical depiction of the model fit to experimental electron density of all instances of the Ligand of Interest. In addition, ligands with molecular weight > 250 and outliers as shown on the geometry validation Tables will also be included. Each fit is shown from different orientation to approximate a three-dimensional view.



6.5 Other polymers [i](#)

There are no such residues in this entry.