



Full wwPDB EM Validation Report ⓘ

May 17, 2026 – 03:01 PM JST

PDB ID : 9VUI / pdb_00009vui
EMDB ID : EMD-65364
Title : Cryo-EM structure of the human measles virus RNA-dependent RNA polymerase complex bound to viral protein C
Authors : Du, T.; Wang, J.; Wu, S.; Ru, H.
Deposited on : 2025-07-13
Resolution : 2.72 Å(reported)

This is a Full wwPDB EM Validation Report for a publicly released PDB entry.

We welcome your comments at validation@mail.wwpdb.org

A user guide is available at

<https://www.wwpdb.org/validation/2017/EMValidationReportHelp>
with specific help available everywhere you see the ⓘ symbol.

The types of validation reports are described at

<http://www.wwpdb.org/validation/2017/FAQs#types>.

The following versions of software and data (see [references ⓘ](#)) were used in the production of this report:

EMDB validation analysis : 0.0.1.dev132
MolProbity : 4-5-2 with Phenix2.0
Percentile statistics : 20250101.v01 (using entries in the PDB archive January 1st 2025)
EM percentile statistics : 202505.v01 (Using data in the EMDb archive up until May 2025)
MapQ : 1.9.13
Ideal geometry (proteins) : Engh & Huber (2001)
Ideal geometry (DNA, RNA) : Parkinson et al. (1996)
Validation Pipeline (wwPDB-VP) : 2.49

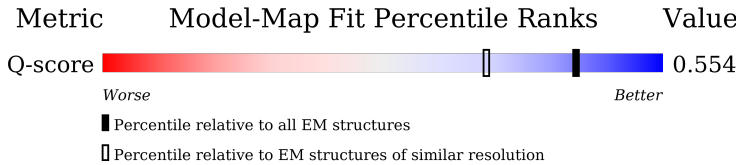
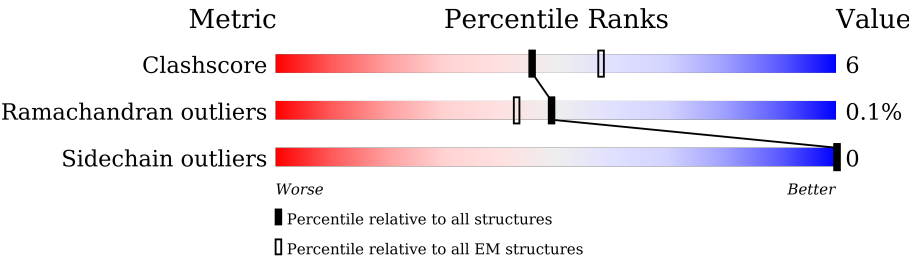
1 Overall quality at a glance

The following experimental techniques were used to determine the structure:

ELECTRON MICROSCOPY

The reported resolution of this entry is 2.72 Å.

Percentile scores (ranging between 0-100) for global validation metrics of the entry are shown in the following graphic. The table shows the number of entries on which the scores are based.



Metric	Whole archive (#Entries)	EM structures (#Entries)	Similar EM resolution (#Entries, resolution range(Å))
Clashscore	229148	23984	-
Ramachandran outliers	224038	23583	-
Sidechain outliers	223484	23102	-
Q-score	-	25397	10355 (2.22 - 3.22)

The table below summarises the geometric issues observed across the polymeric chains and their fit to the map. The red, orange, yellow and green segments of the bar indicate the fraction of residues that contain outliers for ≥ 3 , 2, 1 and 0 types of geometric quality criteria respectively. A grey segment represents the fraction of residues that are not modelled. The numeric value for each fraction is indicated below the corresponding segment, with a dot representing fractions $\leq 5\%$. The upper red bar (where present) indicates the fraction of residues that have poor fit to the EM map (all-atom inclusion $< 40\%$). The numeric value is given above the bar.

Mol	Chain	Length	Quality of chain
1	A	602	
1	B	602	
1	C	602	
1	D	602	

Continued on next page...

Continued from previous page...

Mol	Chain	Length	Quality of chain
2	L	2630	<div><div><div></div><div></div><div></div></div><div>64%11%25%</div></div>
3	X	846	<div><div><div></div><div></div><div></div></div><div>10%87%</div></div>
3	Y	846	<div><div><div></div><div></div><div></div></div><div>10%87%</div></div>

2 Entry composition

There are 5 unique types of molecules in this entry. The entry contains 19446 atoms, of which 0 are hydrogens and 0 are deuteriums.

In the tables below, the AltConf column contains the number of residues with at least one atom in alternate conformation and the Trace column contains the number of residues modelled with at most 2 atoms.

- Molecule 1 is a protein called Maltose/maltodextrin-binding periplasmic protein, Phosphoprotein.

Mol	Chain	Residues	Atoms					AltConf	Trace
1	A	127	Total	C	N	O	S	0	0
			988	624	179	180	5		
1	B	31	Total	C	N	O	S	0	0
			241	150	43	47	1		
1	C	59	Total	C	N	O	S	0	0
			446	279	78	88	1		
1	D	41	Total	C	N	O	S	0	0
			309	193	55	60	1		

There are 136 discrepancies between the modelled and reference sequences:

Chain	Residue	Modelled	Actual	Comment	Reference
A	-94	MET	-	initiating methionine	UNP P0AEX9
A	-93	GLY	-	expression tag	UNP P0AEX9
A	-92	SER	-	expression tag	UNP P0AEX9
A	-91	SER	-	expression tag	UNP P0AEX9
A	-90	HIS	-	expression tag	UNP P0AEX9
A	-89	HIS	-	expression tag	UNP P0AEX9
A	-88	HIS	-	expression tag	UNP P0AEX9
A	-87	HIS	-	expression tag	UNP P0AEX9
A	-86	HIS	-	expression tag	UNP P0AEX9
A	-85	HIS	-	expression tag	UNP P0AEX9
A	-84	GLY	-	expression tag	UNP P0AEX9
A	-83	THR	-	expression tag	UNP P0AEX9
A	-82	LYS	-	expression tag	UNP P0AEX9
A	-81	THR	-	expression tag	UNP P0AEX9
A	284	GLY	-	linker	UNP P0AEX9
A	285	THR	-	linker	UNP P0AEX9
A	286	ASP	-	linker	UNP P0AEX9
A	287	TYR	-	linker	UNP P0AEX9
A	288	ASP	-	linker	UNP P0AEX9
A	289	ILE	-	linker	UNP P0AEX9
A	290	PRO	-	linker	UNP P0AEX9

Continued on next page...

Continued from previous page...

Chain	Residue	Modelled	Actual	Comment	Reference
A	291	THR	-	linker	UNP P0AEX9
A	292	THR	-	linker	UNP P0AEX9
A	293	LEU	-	linker	UNP P0AEX9
A	294	GLU	-	linker	UNP P0AEX9
A	295	VAL	-	linker	UNP P0AEX9
A	296	LEU	-	linker	UNP P0AEX9
A	297	PHE	-	linker	UNP P0AEX9
A	298	GLN	-	linker	UNP P0AEX9
A	299	GLY	-	linker	UNP P0AEX9
A	300	PRO	-	linker	UNP P0AEX9
A	301	LEU	-	linker	UNP P0AEX9
A	302	GLY	-	linker	UNP P0AEX9
A	303	SER	-	linker	UNP P0AEX9
B	-94	MET	-	initiating methionine	UNP P0AEX9
B	-93	GLY	-	expression tag	UNP P0AEX9
B	-92	SER	-	expression tag	UNP P0AEX9
B	-91	SER	-	expression tag	UNP P0AEX9
B	-90	HIS	-	expression tag	UNP P0AEX9
B	-89	HIS	-	expression tag	UNP P0AEX9
B	-88	HIS	-	expression tag	UNP P0AEX9
B	-87	HIS	-	expression tag	UNP P0AEX9
B	-86	HIS	-	expression tag	UNP P0AEX9
B	-85	HIS	-	expression tag	UNP P0AEX9
B	-84	GLY	-	expression tag	UNP P0AEX9
B	-83	THR	-	expression tag	UNP P0AEX9
B	-82	LYS	-	expression tag	UNP P0AEX9
B	-81	THR	-	expression tag	UNP P0AEX9
B	284	GLY	-	linker	UNP P0AEX9
B	285	THR	-	linker	UNP P0AEX9
B	286	ASP	-	linker	UNP P0AEX9
B	287	TYR	-	linker	UNP P0AEX9
B	288	ASP	-	linker	UNP P0AEX9
B	289	ILE	-	linker	UNP P0AEX9
B	290	PRO	-	linker	UNP P0AEX9
B	291	THR	-	linker	UNP P0AEX9
B	292	THR	-	linker	UNP P0AEX9
B	293	LEU	-	linker	UNP P0AEX9
B	294	GLU	-	linker	UNP P0AEX9
B	295	VAL	-	linker	UNP P0AEX9
B	296	LEU	-	linker	UNP P0AEX9
B	297	PHE	-	linker	UNP P0AEX9
B	298	GLN	-	linker	UNP P0AEX9

Continued on next page...

Continued from previous page...

Chain	Residue	Modelled	Actual	Comment	Reference
B	299	GLY	-	linker	UNP P0AEX9
B	300	PRO	-	linker	UNP P0AEX9
B	301	LEU	-	linker	UNP P0AEX9
B	302	GLY	-	linker	UNP P0AEX9
B	303	SER	-	linker	UNP P0AEX9
C	-94	MET	-	initiating methionine	UNP P0AEX9
C	-93	GLY	-	expression tag	UNP P0AEX9
C	-92	SER	-	expression tag	UNP P0AEX9
C	-91	SER	-	expression tag	UNP P0AEX9
C	-90	HIS	-	expression tag	UNP P0AEX9
C	-89	HIS	-	expression tag	UNP P0AEX9
C	-88	HIS	-	expression tag	UNP P0AEX9
C	-87	HIS	-	expression tag	UNP P0AEX9
C	-86	HIS	-	expression tag	UNP P0AEX9
C	-85	HIS	-	expression tag	UNP P0AEX9
C	-84	GLY	-	expression tag	UNP P0AEX9
C	-83	THR	-	expression tag	UNP P0AEX9
C	-82	LYS	-	expression tag	UNP P0AEX9
C	-81	THR	-	expression tag	UNP P0AEX9
C	284	GLY	-	linker	UNP P0AEX9
C	285	THR	-	linker	UNP P0AEX9
C	286	ASP	-	linker	UNP P0AEX9
C	287	TYR	-	linker	UNP P0AEX9
C	288	ASP	-	linker	UNP P0AEX9
C	289	ILE	-	linker	UNP P0AEX9
C	290	PRO	-	linker	UNP P0AEX9
C	291	THR	-	linker	UNP P0AEX9
C	292	THR	-	linker	UNP P0AEX9
C	293	LEU	-	linker	UNP P0AEX9
C	294	GLU	-	linker	UNP P0AEX9
C	295	VAL	-	linker	UNP P0AEX9
C	296	LEU	-	linker	UNP P0AEX9
C	297	PHE	-	linker	UNP P0AEX9
C	298	GLN	-	linker	UNP P0AEX9
C	299	GLY	-	linker	UNP P0AEX9
C	300	PRO	-	linker	UNP P0AEX9
C	301	LEU	-	linker	UNP P0AEX9
C	302	GLY	-	linker	UNP P0AEX9
C	303	SER	-	linker	UNP P0AEX9
D	-94	MET	-	initiating methionine	UNP P0AEX9
D	-93	GLY	-	expression tag	UNP P0AEX9
D	-92	SER	-	expression tag	UNP P0AEX9

Continued on next page...

Continued from previous page...

Chain	Residue	Modelled	Actual	Comment	Reference
D	-91	SER	-	expression tag	UNP P0AEX9
D	-90	HIS	-	expression tag	UNP P0AEX9
D	-89	HIS	-	expression tag	UNP P0AEX9
D	-88	HIS	-	expression tag	UNP P0AEX9
D	-87	HIS	-	expression tag	UNP P0AEX9
D	-86	HIS	-	expression tag	UNP P0AEX9
D	-85	HIS	-	expression tag	UNP P0AEX9
D	-84	GLY	-	expression tag	UNP P0AEX9
D	-83	THR	-	expression tag	UNP P0AEX9
D	-82	LYS	-	expression tag	UNP P0AEX9
D	-81	THR	-	expression tag	UNP P0AEX9
D	284	GLY	-	linker	UNP P0AEX9
D	285	THR	-	linker	UNP P0AEX9
D	286	ASP	-	linker	UNP P0AEX9
D	287	TYR	-	linker	UNP P0AEX9
D	288	ASP	-	linker	UNP P0AEX9
D	289	ILE	-	linker	UNP P0AEX9
D	290	PRO	-	linker	UNP P0AEX9
D	291	THR	-	linker	UNP P0AEX9
D	292	THR	-	linker	UNP P0AEX9
D	293	LEU	-	linker	UNP P0AEX9
D	294	GLU	-	linker	UNP P0AEX9
D	295	VAL	-	linker	UNP P0AEX9
D	296	LEU	-	linker	UNP P0AEX9
D	297	PHE	-	linker	UNP P0AEX9
D	298	GLN	-	linker	UNP P0AEX9
D	299	GLY	-	linker	UNP P0AEX9
D	300	PRO	-	linker	UNP P0AEX9
D	301	LEU	-	linker	UNP P0AEX9
D	302	GLY	-	linker	UNP P0AEX9
D	303	SER	-	linker	UNP P0AEX9

- Molecule 2 is a protein called Maltose/maltodextrin-binding periplasmic protein,RNA-directed RNA polymerase L,Strep II and FLAG tag.

Mol	Chain	Residues	Atoms					AltConf	Trace
2	L	1963	Total	C	N	O	S	1	0
			15713	10086	2683	2858	86		

There are 34 discrepancies between the modelled and reference sequences:

Chain	Residue	Modelled	Actual	Comment	Reference
L	-397	MET	-	initiating methionine	UNP P0AEX9
L	-396	GLY	-	expression tag	UNP P0AEX9
L	-395	SER	-	expression tag	UNP P0AEX9
L	-394	SER	-	expression tag	UNP P0AEX9
L	-393	HIS	-	expression tag	UNP P0AEX9
L	-392	HIS	-	expression tag	UNP P0AEX9
L	-391	HIS	-	expression tag	UNP P0AEX9
L	-390	HIS	-	expression tag	UNP P0AEX9
L	-389	HIS	-	expression tag	UNP P0AEX9
L	-388	HIS	-	expression tag	UNP P0AEX9
L	-387	GLY	-	expression tag	UNP P0AEX9
L	-386	THR	-	expression tag	UNP P0AEX9
L	-385	LYS	-	expression tag	UNP P0AEX9
L	-384	THR	-	expression tag	UNP P0AEX9
L	-19	GLY	-	linker	UNP P0AEX9
L	-18	THR	-	linker	UNP P0AEX9
L	-17	ASP	-	linker	UNP P0AEX9
L	-16	TYR	-	linker	UNP P0AEX9
L	-15	ASP	-	linker	UNP P0AEX9
L	-14	ILE	-	linker	UNP P0AEX9
L	-13	PRO	-	linker	UNP P0AEX9
L	-12	THR	-	linker	UNP P0AEX9
L	-11	THR	-	linker	UNP P0AEX9
L	-10	LEU	-	linker	UNP P0AEX9
L	-9	GLU	-	linker	UNP P0AEX9
L	-8	VAL	-	linker	UNP P0AEX9
L	-7	LEU	-	linker	UNP P0AEX9
L	-6	PHE	-	linker	UNP P0AEX9
L	-5	GLN	-	linker	UNP P0AEX9
L	-4	GLY	-	linker	UNP P0AEX9
L	-3	PRO	-	linker	UNP P0AEX9
L	-2	LEU	-	linker	UNP P0AEX9
L	-1	GLY	-	linker	UNP P0AEX9
L	0	SER	-	linker	UNP P0AEX9

- Molecule 3 is a protein called Maltose/maltodextrin-binding periplasmic protein, Protein C, Green fluorescent protein.

Mol	Chain	Residues	Atoms					AltConf	Trace
3	X	106	Total	C	N	O	S	0	0
			847	549	140	149	9		
3	Y	113	Total	C	N	O	S	0	0
			896	577	153	158	8		

There are 124 discrepancies between the modelled and reference sequences:

Chain	Residue	Modelled	Actual	Comment	Reference
X	-397	MET	-	initiating methionine	UNP P0AEX9
X	-396	GLY	-	expression tag	UNP P0AEX9
X	-395	SER	-	expression tag	UNP P0AEX9
X	-394	SER	-	expression tag	UNP P0AEX9
X	-393	HIS	-	expression tag	UNP P0AEX9
X	-392	HIS	-	expression tag	UNP P0AEX9
X	-391	HIS	-	expression tag	UNP P0AEX9
X	-390	HIS	-	expression tag	UNP P0AEX9
X	-389	HIS	-	expression tag	UNP P0AEX9
X	-388	HIS	-	expression tag	UNP P0AEX9
X	-387	GLY	-	expression tag	UNP P0AEX9
X	-386	THR	-	expression tag	UNP P0AEX9
X	-385	LYS	-	expression tag	UNP P0AEX9
X	-384	THR	-	expression tag	UNP P0AEX9
X	-19	GLY	-	linker	UNP P0AEX9
X	-18	THR	-	linker	UNP P0AEX9
X	-17	ASP	-	linker	UNP P0AEX9
X	-16	TYR	-	linker	UNP P0AEX9
X	-15	ASP	-	linker	UNP P0AEX9
X	-14	ILE	-	linker	UNP P0AEX9
X	-13	PRO	-	linker	UNP P0AEX9
X	-12	THR	-	linker	UNP P0AEX9
X	-11	THR	-	linker	UNP P0AEX9
X	-10	LEU	-	linker	UNP P0AEX9
X	-9	GLU	-	linker	UNP P0AEX9
X	-8	VAL	-	linker	UNP P0AEX9
X	-7	LEU	-	linker	UNP P0AEX9
X	-6	PHE	-	linker	UNP P0AEX9
X	-5	GLN	-	linker	UNP P0AEX9
X	-4	GLY	-	linker	UNP P0AEX9
X	-3	PRO	-	linker	UNP P0AEX9
X	-2	LEU	-	linker	UNP P0AEX9
X	-1	GLY	-	linker	UNP P0AEX9
X	0	SER	-	linker	UNP P0AEX9
X	187	SER	-	linker	UNP P35977
X	188	ARG	-	linker	UNP P35977
X	189	GLU	-	linker	UNP P35977
X	190	ASN	-	linker	UNP P35977
X	191	LEU	-	linker	UNP P35977
X	192	TYR	-	linker	UNP P35977
X	193	PHE	-	linker	UNP P35977
X	194	GLN	-	linker	UNP P35977

Continued on next page...

Continued from previous page...

Chain	Residue	Modelled	Actual	Comment	Reference
X	195	GLY	-	linker	UNP P35977
X	196	ASN	-	linker	UNP P35977
X	197	GLY	-	linker	UNP P35977
X	198	SER	-	linker	UNP P35977
X	199	SER	-	linker	UNP P35977
X	200	GLY	-	linker	UNP P35977
X	201	SER	-	linker	UNP P35977
X	203	VAL	-	insertion	UNP P42212
X	266	LEU	PHE	conflict	UNP P42212
X	267	THR	SER	conflict	UNP P42212
X	408	LYS	ALA	conflict	UNP P42212
X	433	LEU	HIS	conflict	UNP P42212
X	441	ASP	-	expression tag	UNP P42212
X	442	TYR	-	expression tag	UNP P42212
X	443	LYS	-	expression tag	UNP P42212
X	444	ASP	-	expression tag	UNP P42212
X	445	ASP	-	expression tag	UNP P42212
X	446	ASP	-	expression tag	UNP P42212
X	447	ASP	-	expression tag	UNP P42212
X	448	LYS	-	expression tag	UNP P42212
Y	-397	MET	-	initiating methionine	UNP P0AEX9
Y	-396	GLY	-	expression tag	UNP P0AEX9
Y	-395	SER	-	expression tag	UNP P0AEX9
Y	-394	SER	-	expression tag	UNP P0AEX9
Y	-393	HIS	-	expression tag	UNP P0AEX9
Y	-392	HIS	-	expression tag	UNP P0AEX9
Y	-391	HIS	-	expression tag	UNP P0AEX9
Y	-390	HIS	-	expression tag	UNP P0AEX9
Y	-389	HIS	-	expression tag	UNP P0AEX9
Y	-388	HIS	-	expression tag	UNP P0AEX9
Y	-387	GLY	-	expression tag	UNP P0AEX9
Y	-386	THR	-	expression tag	UNP P0AEX9
Y	-385	LYS	-	expression tag	UNP P0AEX9
Y	-384	THR	-	expression tag	UNP P0AEX9
Y	-19	GLY	-	linker	UNP P0AEX9
Y	-18	THR	-	linker	UNP P0AEX9
Y	-17	ASP	-	linker	UNP P0AEX9
Y	-16	TYR	-	linker	UNP P0AEX9
Y	-15	ASP	-	linker	UNP P0AEX9
Y	-14	ILE	-	linker	UNP P0AEX9
Y	-13	PRO	-	linker	UNP P0AEX9
Y	-12	THR	-	linker	UNP P0AEX9

Continued on next page...

Continued from previous page...

Chain	Residue	Modelled	Actual	Comment	Reference
Y	-11	THR	-	linker	UNP P0AEX9
Y	-10	LEU	-	linker	UNP P0AEX9
Y	-9	GLU	-	linker	UNP P0AEX9
Y	-8	VAL	-	linker	UNP P0AEX9
Y	-7	LEU	-	linker	UNP P0AEX9
Y	-6	PHE	-	linker	UNP P0AEX9
Y	-5	GLN	-	linker	UNP P0AEX9
Y	-4	GLY	-	linker	UNP P0AEX9
Y	-3	PRO	-	linker	UNP P0AEX9
Y	-2	LEU	-	linker	UNP P0AEX9
Y	-1	GLY	-	linker	UNP P0AEX9
Y	0	SER	-	linker	UNP P0AEX9
Y	187	SER	-	linker	UNP P35977
Y	188	ARG	-	linker	UNP P35977
Y	189	GLU	-	linker	UNP P35977
Y	190	ASN	-	linker	UNP P35977
Y	191	LEU	-	linker	UNP P35977
Y	192	TYR	-	linker	UNP P35977
Y	193	PHE	-	linker	UNP P35977
Y	194	GLN	-	linker	UNP P35977
Y	195	GLY	-	linker	UNP P35977
Y	196	ASN	-	linker	UNP P35977
Y	197	GLY	-	linker	UNP P35977
Y	198	SER	-	linker	UNP P35977
Y	199	SER	-	linker	UNP P35977
Y	200	GLY	-	linker	UNP P35977
Y	201	SER	-	linker	UNP P35977
Y	203	VAL	-	insertion	UNP P42212
Y	266	LEU	PHE	conflict	UNP P42212
Y	267	THR	SER	conflict	UNP P42212
Y	408	LYS	ALA	conflict	UNP P42212
Y	433	LEU	HIS	conflict	UNP P42212
Y	441	ASP	-	expression tag	UNP P42212
Y	442	TYR	-	expression tag	UNP P42212
Y	443	LYS	-	expression tag	UNP P42212
Y	444	ASP	-	expression tag	UNP P42212
Y	445	ASP	-	expression tag	UNP P42212
Y	446	ASP	-	expression tag	UNP P42212
Y	447	ASP	-	expression tag	UNP P42212
Y	448	LYS	-	expression tag	UNP P42212

- Molecule 4 is ZINC ION (CCD ID: ZN) (formula: Zn) (labeled as "Ligand of Interest" by depositor).

Mol	Chain	Residues	Atoms		AltConf
4	L	3	Total 3	Zn 3	0

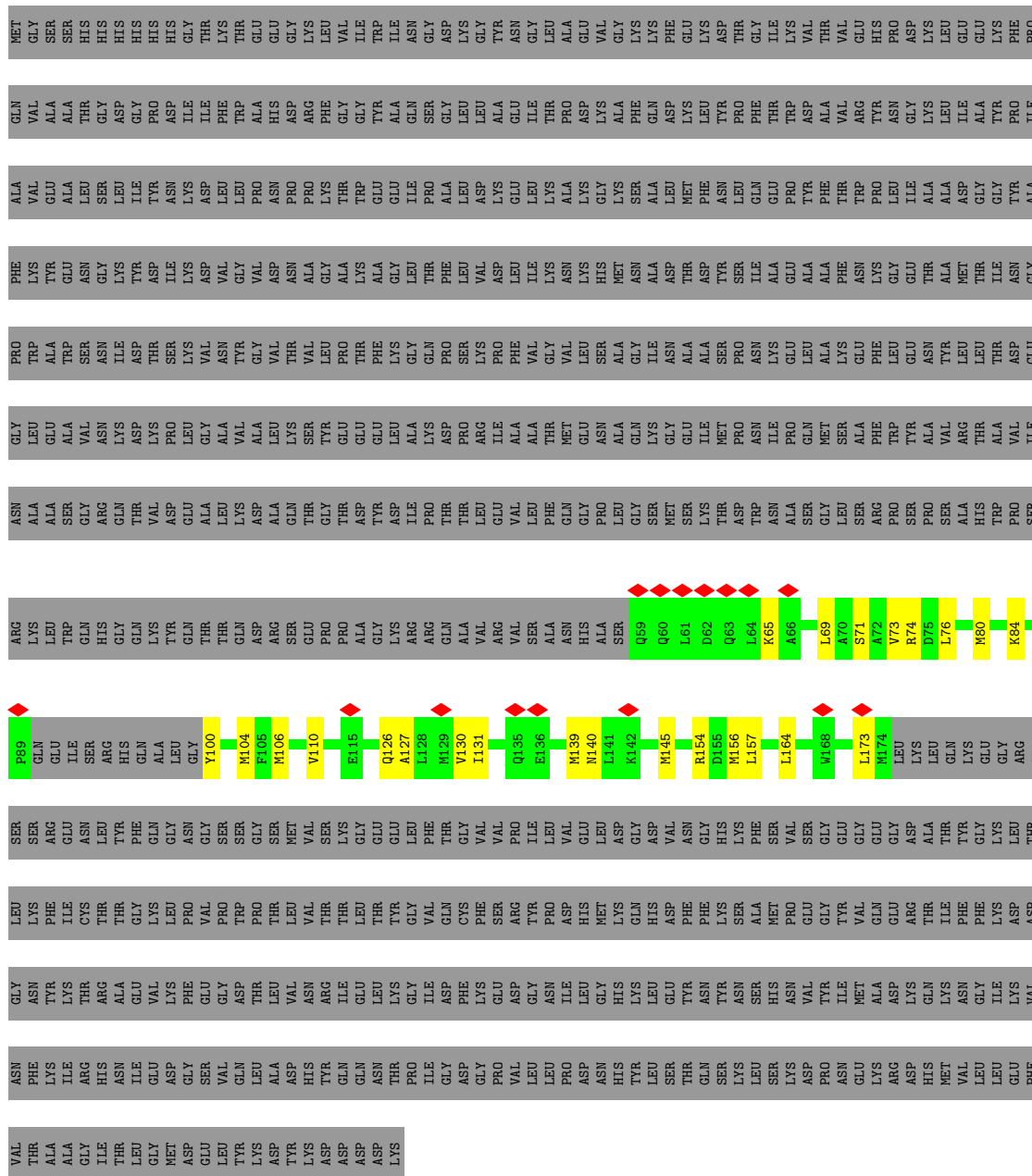
- Molecule 5 is water.

Mol	Chain	Residues	Atoms		AltConf
5	L	3	Total 3	O 3	0









- Chain Y:  10% . 87%



4 Experimental information

Property	Value	Source
EM reconstruction method	SINGLE PARTICLE	Depositor
Imposed symmetry	POINT, Not provided	
Number of particles used	591603	Depositor
Resolution determination method	FSC 0.143 CUT-OFF	Depositor
CTF correction method	PHASE FLIPPING AND AMPLITUDE CORRECTION	Depositor
Microscope	TFS KRIOS	Depositor
Voltage (kV)	300	Depositor
Electron dose ($e^-/\text{\AA}^2$)	52.52	Depositor
Minimum defocus (nm)	1000	Depositor
Maximum defocus (nm)	1500	Depositor
Magnification	Not provided	
Image detector	GATAN K3 BIOQUANTUM (6k x 4k)	Depositor
Maximum map value	1.853	Depositor
Minimum map value	-1.362	Depositor
Average map value	-0.000	Depositor
Map value standard deviation	0.038	Depositor
Recommended contour level	0.143	Depositor
Map size (Å)	306.36002, 306.36002, 306.36002	wwPDB
Map dimensions	360, 360, 360	wwPDB
Map angles (°)	90.0, 90.0, 90.0	wwPDB
Pixel spacing (Å)	0.8510001, 0.8510001, 0.8510001	Depositor

5 Model quality

5.1 Standard geometry

Bond lengths and bond angles in the following residue types are not validated in this section: ZN

The Z score for a bond length (or angle) is the number of standard deviations the observed value is removed from the expected value. A bond length (or angle) with $|Z| > 5$ is considered an outlier worth inspection. RMSZ is the root-mean-square of all Z scores of the bond lengths (or angles).

Mol	Chain	Bond lengths		Bond angles	
		RMSZ	$\# Z > 5$	RMSZ	$\# Z > 5$
1	A	0.15	0/996	0.38	0/1326
1	B	0.11	0/241	0.23	0/320
1	C	0.15	0/451	0.32	0/609
1	D	0.14	0/311	0.30	0/416
2	L	0.17	0/16058	0.34	0/21749
3	X	0.17	0/862	0.47	0/1166
3	Y	0.46	0/911	0.63	0/1232
All	All	0.19	0/19830	0.37	0/26818

Chiral center outliers are detected by calculating the chiral volume of a chiral center and verifying if the center is modelled as a planar moiety or with the opposite hand. A planarity outlier is detected by checking planarity of atoms in a peptide group, atoms in a mainchain group or atoms of a sidechain that are expected to be planar.

Mol	Chain	#Chirality outliers	#Planarity outliers
3	Y	0	1

There are no bond length outliers.

There are no bond angle outliers.

There are no chirality outliers.

All (1) planarity outliers are listed below:

Mol	Chain	Res	Type	Group
3	Y	114	ARG	Sidechain

5.2 Too-close contacts ⓘ

In the following table, the Non-H and H(model) columns list the number of non-hydrogen atoms and hydrogen atoms in the chain respectively. The H(added) column lists the number of hydrogen atoms added and optimized by MolProbity. The Clashes column lists the number of clashes within the asymmetric unit, whereas Symm-Clashes lists symmetry-related clashes.

Mol	Chain	Non-H	H(model)	H(added)	Clashes	Symm-Clashes
1	A	988	0	1062	24	0
1	B	241	0	259	10	0
1	C	446	0	468	6	0
1	D	309	0	329	11	0
2	L	15713	0	15858	178	0
3	X	847	0	887	17	0
3	Y	896	0	935	20	0
4	L	3	0	0	0	0
5	L	3	0	0	1	0
All	All	19446	0	19798	244	0

The all-atom clashscore is defined as the number of clashes found per 1000 atoms (including hydrogen atoms). The all-atom clashscore for this structure is 6.

All (244) close contacts within the same asymmetric unit are listed below, sorted by their clash magnitude.

Atom-1	Atom-2	Interatomic distance (Å)	Clash overlap (Å)
2:L:467:LYS:HD3	2:L:554:ARG:HH21	1.41	0.85
2:L:983:THR:CG2	2:L:1122:LYS:HD2	2.10	0.82
2:L:42:ASP:OD2	2:L:729:GLN:NE2	2.15	0.79
2:L:983:THR:HG22	2:L:983:THR:O	1.81	0.79
1:A:352:GLN:NE2	1:B:354:ASN:OD1	2.19	0.76
2:L:1306:ARG:NH2	2:L:1351:GLU:O	2.19	0.75
2:L:983:THR:HG21	2:L:1122:LYS:HD2	1.71	0.70
1:A:450:VAL:HG13	2:L:801:ARG:HD2	1.73	0.69
2:L:2135:GLN:OE1	2:L:2157:ARG:NH2	2.26	0.68
2:L:885:ARG:NH1	2:L:1346:THR:OG1	2.28	0.68
3:Y:100:TYR:HA	3:Y:104:MET:HE2	1.74	0.67
1:A:356:GLN:NE2	1:D:356:GLN:OE1	2.28	0.67
2:L:1927:GLN:H	2:L:1984:THR:HG22	1.61	0.65
2:L:1256:TRP:HH2	2:L:1278:THR:HG21	1.62	0.64
2:L:292:GLN:NE2	2:L:300:LEU:O	2.30	0.64
2:L:486:ARG:NH2	2:L:715:ASP:OD1	2.30	0.64
2:L:1767:ALA:HB2	2:L:1794:MET:HG2	1.80	0.64
2:L:2132:ASP:OD2	2:L:2157:ARG:NH1	2.31	0.64

Continued on next page...

Continued from previous page...

Atom-1	Atom-2	Interatomic distance (Å)	Clash overlap (Å)
2:L:371:ARG:NH2	2:L:728:ASP:O	2.22	0.63
2:L:865:ARG:NH1	2:L:939:GLY:O	2.31	0.63
2:L:983:THR:HG22	2:L:1122:LYS:HD2	1.81	0.63
3:X:100:TYR:O	3:X:140:ASN:ND2	2.33	0.62
2:L:1013:LEU:HD11	2:L:1095:LEU:HD11	1.82	0.62
3:X:65:LYS:HE3	3:X:156:MET:HG2	1.80	0.62
2:L:983:THR:HG21	2:L:1122:LYS:CD	2.29	0.62
2:L:2090:SER:O	2:L:2094:GLU:HG3	1.99	0.61
1:C:392:PRO:HA	1:C:395:LYS:HG2	1.83	0.61
1:A:475:GLU:OE1	1:A:479:ARG:NH1	2.34	0.61
2:L:1019:ARG:O	2:L:1023:ILE:HD12	2.00	0.60
2:L:1771:SER:O	2:L:1775:ARG:HG3	2.01	0.60
3:X:145:MET:HE3	3:X:145:MET:HA	1.83	0.60
2:L:790:ASN:O	2:L:794:ARG:HG3	2.02	0.60
2:L:1888:LYS:NZ	2:L:1896:GLU:OE1	2.32	0.60
2:L:1921:PHE:O	2:L:1984:THR:OG1	2.19	0.60
2:L:781:LYS:NZ	2:L:795:GLU:OE2	2.35	0.60
2:L:1503:ARG:NH1	2:L:1625:CYS:HB3	2.17	0.60
2:L:2108:LEU:O	2:L:2178:SER:OG	2.20	0.59
2:L:315:VAL:O	2:L:319:ASN:ND2	2.36	0.59
1:A:367:LEU:HD22	1:D:363:LEU:HG	1.83	0.59
2:L:989:SER:O	2:L:1147:ARG:NH2	2.35	0.59
2:L:469:LEU:HD21	2:L:498:LEU:HD13	1.83	0.59
1:B:347:GLU:HG3	1:B:351:LYS:HE3	1.84	0.59
2:L:781:LYS:HD2	2:L:799:VAL:HG21	1.85	0.59
2:L:1442:LEU:HD11	2:L:1591:LEU:HB3	1.85	0.59
3:Y:120:THR:O	3:Y:123:TRP:N	2.33	0.58
2:L:427:SER:OG	2:L:429:GLU:OE1	2.16	0.58
2:L:2054:ASP:OD1	2:L:2055:GLY:N	2.37	0.58
3:X:139:MET:HE1	3:Y:173:LEU:HB2	1.84	0.58
2:L:657:SER:HB3	2:L:780:THR:HG22	1.85	0.57
2:L:1938:ARG:HD2	2:L:1961:ASP:OD1	2.03	0.56
3:X:76:LEU:HG	3:X:80:MET:HE1	1.87	0.56
2:L:1124:ASN:HB3	2:L:1127:ILE:HD12	1.86	0.56
2:L:31:TYR:O	2:L:33:ARG:NH1	2.38	0.56
2:L:1582:ASN:OD1	2:L:2156:LYS:NZ	2.39	0.56
1:A:476:ASP:OD1	1:A:477:ARG:N	2.39	0.55
1:A:468:ILE:O	1:A:471:SER:OG	2.23	0.55
2:L:967:MET:HG2	2:L:972:LEU:HD23	1.88	0.55
3:Y:56:HIS:O	3:Y:60:GLN:HG2	2.07	0.55
1:A:356:GLN:HE21	1:D:356:GLN:CD	2.16	0.54

Continued on next page...

Continued from previous page...

Atom-1	Atom-2	Interatomic distance (Å)	Clash overlap (Å)
2:L:2014:ILE:HG21	2:L:2179:ALA:HB2	1.88	0.54
2:L:983:THR:CG2	2:L:983:THR:O	2.53	0.54
3:Y:100:TYR:H	3:Y:137:GLU:CD	2.16	0.54
1:A:367:LEU:HD21	1:D:366:HIS:HB2	1.90	0.54
2:L:1933:VAL:HG11	2:L:1959:MET:SD	2.48	0.54
2:L:257:ARG:NH2	2:L:336:TYR:O	2.41	0.53
3:X:126:GLN:O	3:X:130:VAL:HG23	2.08	0.53
2:L:664:LEU:HD11	2:L:775:GLN:HB2	1.91	0.53
2:L:1765:TYR:O	2:L:1769:GLU:HG3	2.09	0.53
2:L:1038:SER:HB2	2:L:1072:ARG:NH1	2.24	0.53
3:X:84:LYS:HE3	3:X:104:MET:HE2	1.91	0.53
1:A:435:LYS:HD2	1:A:438:GLN:HE21	1.74	0.53
2:L:1688:PRO:O	3:Y:126:GLN:HB3	2.08	0.53
2:L:284:GLU:HB3	2:L:285:PRO:HD3	1.92	0.52
1:A:396:PRO:HG2	1:D:370:ILE:HG13	1.92	0.52
2:L:97:ILE:HD11	2:L:201:VAL:HG11	1.91	0.52
2:L:1681:GLN:HE21	2:L:1681:GLN:HA	1.75	0.52
2:L:1752:HIS:CE1	2:L:2169:LYS:HD3	2.45	0.52
3:X:173:LEU:HD11	3:Y:172:LEU:HB2	1.91	0.52
2:L:700:LEU:HD11	2:L:739:ILE:HG12	1.92	0.51
3:X:154:ARG:HD3	3:X:157:LEU:HD12	1.92	0.51
2:L:1582:ASN:HD22	2:L:2160:VAL:HB	1.76	0.51
2:L:292:GLN:HE22	2:L:303:ALA:HB3	1.75	0.51
2:L:1582:ASN:ND2	2:L:2160:VAL:HB	2.25	0.51
2:L:1679:ILE:O	2:L:1683:ARG:HG3	2.10	0.51
2:L:2005:VAL:HG12	2:L:2015:ASN:HD21	1.76	0.51
2:L:103:THR:OG1	2:L:107:ARG:NH2	2.43	0.51
2:L:460:LEU:HD11	2:L:502:PHE:HZ	1.76	0.50
2:L:530:LEU:HD11	2:L:547:ALA:HB1	1.93	0.50
1:A:505:ILE:HG22	1:A:506:MET:SD	2.51	0.50
2:L:781:LYS:HG2	2:L:782:ARG:H	1.75	0.50
2:L:1081:THR:HG23	2:L:1085:LEU:HD23	1.94	0.50
2:L:8:GLN:HA	2:L:1087:ARG:HH22	1.77	0.50
2:L:1739:LEU:HD13	2:L:1986:PRO:HB2	1.94	0.50
2:L:120:VAL:HG11	2:L:928:ILE:HG21	1.94	0.49
1:A:375:PRO:HD3	1:A:432:GLN:HE22	1.76	0.49
1:A:360:ILE:HD12	1:D:360:ILE:HG12	1.93	0.49
2:L:128:LEU:HD13	2:L:886:TYR:HB3	1.93	0.49
1:C:351:LYS:NZ	1:C:355:ARG:HE	2.10	0.49
2:L:1445:ILE:HG13	2:L:1490:CYS:HB3	1.93	0.49
3:X:69:LEU:O	3:X:73:VAL:HG23	2.13	0.49

Continued on next page...

Continued from previous page...

Atom-1	Atom-2	Interatomic distance (Å)	Clash overlap (Å)
2:L:125:PHE:HE1	2:L:141:LEU:HD12	1.78	0.49
2:L:528:PHE:CD1	2:L:553:MET:HG3	2.47	0.49
2:L:1852:PRO:O	2:L:1855:THR:OG1	2.23	0.49
2:L:2165:VAL:HG12	2:L:2169:LYS:HE3	1.94	0.49
1:B:351:LYS:HA	1:B:354:ASN:HD22	1.78	0.49
3:Y:122:SER:O	3:Y:126:GLN:HG2	2.12	0.49
2:L:376:GLN:NE2	5:L:3103:HOH:O	2.36	0.49
2:L:1474:GLU:HG2	2:L:1675:ARG:HD2	1.95	0.49
2:L:1526:PHE:HB3	2:L:1529:LEU:HD12	1.95	0.48
2:L:1770:ILE:O	2:L:1774:ILE:HG12	2.13	0.48
2:L:920:LEU:HD23	2:L:926:LEU:HD23	1.93	0.48
2:L:726:PRO:HB2	2:L:728:ASP:HB2	1.95	0.48
2:L:1249:TYR:HB2	2:L:1380:ILE:HB	1.95	0.48
2:L:1800:GLU:HG3	2:L:2031:CYS:HB3	1.94	0.48
2:L:1939:GLU:HB2	2:L:1960:THR:OG1	2.12	0.48
2:L:314:ASP:O	2:L:318:GLN:HG2	2.13	0.48
2:L:1675:ARG:O	2:L:1679:ILE:HG12	2.14	0.48
2:L:1911:GLY:HA2	2:L:1961:ASP:HA	1.95	0.47
2:L:704:VAL:HG22	2:L:733:LYS:HG2	1.94	0.47
2:L:838:TYR:O	2:L:841:LEU:HD23	2.14	0.47
2:L:531:SER:OG	2:L:548:LYS:NZ	2.34	0.47
2:L:1474:GLU:N	2:L:1474:GLU:OE1	2.47	0.47
3:Y:157:LEU:HB3	3:Y:165:PRO:HG3	1.96	0.47
2:L:12:PRO:O	2:L:176:ARG:NH1	2.47	0.47
2:L:62:ILE:O	2:L:66:VAL:HG23	2.14	0.47
2:L:122:ASP:N	2:L:122:ASP:OD1	2.44	0.47
2:L:745:LYS:O	2:L:749:ILE:HG12	2.15	0.47
2:L:1305:VAL:HG12	2:L:1305:VAL:O	2.14	0.47
2:L:915:ASP:OD2	2:L:1108:TYR:OH	2.29	0.47
2:L:1005:CYS:HB2	2:L:1106:TYR:OH	2.15	0.47
2:L:1269:VAL:HG13	2:L:1273:GLU:HB2	1.97	0.47
2:L:2035:ILE:HG22	2:L:2037:GLY:H	1.79	0.46
2:L:26:VAL:O	2:L:30:GLU:HG2	2.15	0.46
1:A:501:LEU:O	1:A:505:ILE:HG13	2.15	0.46
2:L:1757:ILE:HG12	2:L:2035:ILE:HD13	1.98	0.46
1:A:356:GLN:NE2	1:C:356:GLN:HE22	2.14	0.46
2:L:1474:GLU:OE2	2:L:1675:ARG:NH1	2.45	0.46
2:L:1892:GLU:O	2:L:1896:GLU:HG3	2.15	0.46
2:L:461:THR:HG22	2:L:1078:MET:SD	2.56	0.46
3:Y:132:ALA:N	3:Y:133:PRO:HD2	2.30	0.46
2:L:254:LEU:HD13	2:L:345:LEU:HG	1.97	0.46

Continued on next page...

Continued from previous page...

Atom-1	Atom-2	Interatomic distance (Å)	Clash overlap (Å)
2:L:58:SER:HA	2:L:62:ILE:HD12	1.98	0.46
2:L:1427:TRP:O	2:L:1685:ARG:NH2	2.41	0.46
2:L:1543:TRP:HA	2:L:1548:ILE:HB	1.98	0.46
3:Y:138:THR:HG22	3:Y:142:LYS:HE3	1.98	0.45
2:L:1198:LEU:O	2:L:1309:ARG:NH2	2.49	0.45
1:A:359:SER:OG	1:B:364:GLU:OE1	2.28	0.45
2:L:652:ALA:O	2:L:785:SER:OG	2.28	0.45
3:X:71:SER:HA	3:X:74:ARG:HH21	1.81	0.45
2:L:374:MET:HE3	2:L:735:PRO:HB2	1.99	0.45
2:L:1689:GLY:O	2:L:1741:ILE:HB	2.16	0.45
2:L:2134:HIS:ND1	2:L:2157:ARG:HG3	2.32	0.45
3:X:73:VAL:HG13	3:X:110:VAL:HG13	1.99	0.45
2:L:2104:TRP:CZ3	2:L:2120:PHE:HB2	2.51	0.45
2:L:1669:CYS:SG	2:L:1674:LEU:HG	2.57	0.45
2:L:2128:TYR:HB3	2:L:2162:LYS:HD3	1.99	0.45
2:L:340:THR:HG21	2:L:345:LEU:HD22	1.99	0.45
1:A:357:ASN:CG	1:D:356:GLN:HE21	2.25	0.45
1:A:461:ARG:HG3	1:A:485:LEU:HD11	1.98	0.44
2:L:1954:GLU:O	2:L:1996:LYS:NZ	2.40	0.44
2:L:1134:VAL:HG13	2:L:1158:GLU:HB3	2.00	0.44
2:L:1503:ARG:HH12	2:L:1625:CYS:HB3	1.82	0.44
2:L:915:ASP:OD1	2:L:915:ASP:N	2.49	0.44
2:L:793:LYS:HD3	2:L:793:LYS:HA	1.89	0.44
2:L:528:PHE:CE1	2:L:553:MET:HG3	2.52	0.44
2:L:554:ARG:NH1	2:L:557:GLN:OE1	2.51	0.44
2:L:1442:LEU:HD12	2:L:1591:LEU:HD23	1.99	0.44
2:L:1476:LEU:HD21	2:L:1537:LYS:HD2	1.98	0.44
2:L:50:LYS:HG3	2:L:54:LYS:NZ	2.33	0.43
2:L:1851:ARG:O	2:L:1854:VAL:HG22	2.18	0.43
3:Y:100:TYR:HA	3:Y:104:MET:CE	2.43	0.43
2:L:241:THR:HG21	2:L:352:PHE:CE1	2.52	0.43
3:Y:151:LEU:HD23	3:Y:151:LEU:HA	1.81	0.43
2:L:193:PRO:HB2	2:L:204:LEU:HD11	2.00	0.43
3:X:106:MET:HE1	3:Y:151:LEU:HD21	1.98	0.43
2:L:466:ASP:HB2	2:L:497:ARG:NH2	2.33	0.43
3:Y:77:GLU:OE1	3:Y:114:ARG:HD2	2.18	0.43
3:X:157:LEU:HD22	3:X:164:LEU:HB3	2.01	0.43
2:L:1004:VAL:O	2:L:1006:VAL:HG13	2.18	0.43
2:L:1484:THR:HG23	2:L:1572:CYS:SG	2.58	0.43
2:L:1688:PRO:HG2	3:Y:126:GLN:HB2	2.01	0.43
1:C:397:ILE:HG13	2:L:511:TYR:CB	2.49	0.43

Continued on next page...

Continued from previous page...

Atom-1	Atom-2	Interatomic distance (Å)	Clash overlap (Å)
2:L:1889:ASP:OD1	2:L:1891:ILE:N	2.52	0.43
2:L:568:ILE:HD11	2:L:686:ILE:HG21	2.01	0.43
2:L:1009:ILE:HD12	2:L:1009:ILE:H	1.82	0.43
2:L:1424:PHE:HZ	2:L:1674:LEU:HD23	1.83	0.43
2:L:467:LYS:HD3	2:L:554:ARG:NH2	2.20	0.43
2:L:1715:ILE:HD11	2:L:1775:ARG:HD2	2.00	0.43
2:L:513:VAL:HG11	2:L:559:ILE:HD12	2.01	0.42
3:X:127:ALA:O	3:X:131:ILE:HG12	2.18	0.42
1:D:345:GLU:O	1:D:349:ILE:HG12	2.19	0.42
2:L:503:LEU:O	2:L:1026:PRO:HD2	2.18	0.42
2:L:877:LYS:HE3	2:L:881:ARG:NE	2.33	0.42
1:A:363:LEU:HD13	1:B:364:GLU:HA	2.01	0.42
2:L:1090:MET:HG3	2:L:1095:LEU:HD12	2.01	0.42
2:L:327:TYR:O	2:L:331:ILE:HG12	2.20	0.42
2:L:349:ILE:HG22	2:L:353[A]:PHE:CZ	2.54	0.42
2:L:773:ASP:OD1	2:L:773:ASP:N	2.52	0.42
2:L:31:TYR:OH	2:L:483:GLU:O	2.37	0.42
2:L:2047:HIS:CE1	2:L:2056:LEU:HB2	2.54	0.42
3:X:71:SER:HA	3:X:74:ARG:NH2	2.34	0.42
1:B:350:LYS:HG2	1:B:354:ASN:HD21	1.85	0.42
2:L:1424:PHE:CD1	2:L:1424:PHE:N	2.87	0.42
2:L:2103:PHE:CZ	2:L:2107:ILE:HD11	2.55	0.42
3:Y:103:ILE:O	3:Y:107:ILE:HG13	2.20	0.42
3:Y:131:ILE:HG13	3:Y:137:GLU:HB3	2.01	0.42
2:L:127:CYS:SG	2:L:945:MET:HE1	2.60	0.42
2:L:163:GLU:HB2	2:L:164:PRO:HD3	2.01	0.42
2:L:1640:LEU:HD12	2:L:1640:LEU:HA	1.93	0.42
1:D:369:SER:O	1:D:369:SER:OG	2.38	0.42
2:L:528:PHE:HB3	2:L:699:ARG:HH21	1.85	0.42
1:A:352:GLN:HB3	1:B:357:ASN:HD21	1.84	0.41
1:B:348:SER:O	1:B:352:GLN:HG2	2.20	0.41
2:L:530:LEU:HD13	2:L:549:MET:HG3	2.01	0.41
1:B:350:LYS:O	1:B:354:ASN:ND2	2.53	0.41
2:L:1451:PHE:CD2	2:L:1525:VAL:HG22	2.55	0.41
2:L:1950:PHE:HA	2:L:1996:LYS:HD3	2.02	0.41
1:D:364:GLU:OE2	2:L:441:LYS:NZ	2.37	0.41
2:L:42:ASP:HB2	2:L:364:VAL:HG21	2.01	0.41
2:L:1070:GLY:O	2:L:1073:GLU:HG3	2.20	0.41
2:L:1521:MET:HB3	2:L:1525:VAL:HG21	2.02	0.41
2:L:1809:TYR:CE1	2:L:1828:PRO:HG3	2.56	0.41
2:L:1968:MET:HE3	2:L:1968:MET:HB3	1.80	0.41

Continued on next page...

Continued from previous page...

Atom-1	Atom-2	Interatomic distance (Å)	Clash overlap (Å)
2:L:983:THR:CG2	2:L:1122:LYS:CD	2.89	0.41
2:L:1511:GLY:O	2:L:1570:TYR:HE2	2.03	0.41
1:A:370:ILE:HD11	1:B:371:MET:HG2	2.03	0.41
2:L:684:ASN:OD1	2:L:693:PHE:HD2	2.03	0.41
1:A:406:LEU:HD12	1:A:410:LEU:HD11	2.03	0.41
2:L:674:GLU:OE1	2:L:674:GLU:N	2.50	0.41
2:L:699:ARG:HA	2:L:699:ARG:HD2	1.76	0.41
3:Y:134:TYR:HB2	3:Y:137:GLU:HG2	2.03	0.41
2:L:1531:ASN:O	2:L:1534:SER:OG	2.33	0.41
2:L:1608:GLN:O	2:L:1612:LEU:HD23	2.22	0.41
3:Y:131:ILE:CG1	3:Y:137:GLU:HB3	2.51	0.41
2:L:1329:THR:HG23	2:L:1332:ILE:H	1.86	0.40
1:C:366:HIS:O	1:C:370:ILE:HG12	2.21	0.40
2:L:9:ILE:HD12	2:L:9:ILE:HA	1.97	0.40
2:L:295:ASP:OD1	2:L:827:SER:OG	2.40	0.40
2:L:859:THR:OG1	2:L:861:VAL:O	2.27	0.40
1:A:459:ALA:O	1:A:463:VAL:HG23	2.21	0.40
3:X:84:LYS:HD2	3:X:87:GLU:HG3	2.04	0.40
1:C:345:GLU:HG2	1:D:346:VAL:HG12	2.03	0.40
2:L:1681:GLN:HA	2:L:1681:GLN:NE2	2.36	0.40
2:L:2054:ASP:O	2:L:2057:LEU:HB3	2.21	0.40

There are no symmetry-related clashes.

5.3 Torsion angles ⓘ

5.3.1 Protein backbone ⓘ

In the following table, the Percentiles column shows the percent Ramachandran outliers of the chain as a percentile score with respect to all PDB entries followed by that with respect to all EM entries.

The Analysed column shows the number of residues for which the backbone conformation was analysed, and the total number of residues.

Mol	Chain	Analysed	Favoured	Allowed	Outliers	Percentiles	
1	A	119/602 (20%)	117 (98%)	2 (2%)	0	100	100
1	B	29/602 (5%)	29 (100%)	0	0	100	100
1	C	57/602 (10%)	57 (100%)	0	0	100	100
1	D	39/602 (6%)	37 (95%)	2 (5%)	0	100	100

Continued on next page...

Continued from previous page...

Mol	Chain	Analysed	Favoured	Allowed	Outliers	Percentiles	
2	L	1942/2630 (74%)	1898 (98%)	44 (2%)	0	100	100
3	X	102/846 (12%)	99 (97%)	3 (3%)	0	100	100
3	Y	109/846 (13%)	105 (96%)	2 (2%)	2 (2%)	6	16
All	All	2397/6730 (36%)	2342 (98%)	53 (2%)	2 (0%)	49	72

All (2) Ramachandran outliers are listed below:

Mol	Chain	Res	Type
3	Y	121	LEU
3	Y	133	PRO

5.3.2 Protein sidechains ⓘ

In the following table, the Percentiles column shows the percent sidechain outliers of the chain as a percentile score with respect to all PDB entries followed by that with respect to all EM entries.

The Analysed column shows the number of residues for which the sidechain conformation was analysed, and the total number of residues.

Mol	Chain	Analysed	Rotameric	Outliers	Percentiles	
1	A	112/499 (22%)	112 (100%)	0	100	100
1	B	29/499 (6%)	29 (100%)	0	100	100
1	C	52/499 (10%)	52 (100%)	0	100	100
1	D	36/499 (7%)	36 (100%)	0	100	100
2	L	1750/2301 (76%)	1750 (100%)	0	100	100
3	X	94/712 (13%)	94 (100%)	0	100	100
3	Y	98/712 (14%)	98 (100%)	0	100	100
All	All	2171/5721 (38%)	2171 (100%)	0	100	100

There are no protein residues with a non-rotameric sidechain to report.

Sometimes sidechains can be flipped to improve hydrogen bonding and reduce clashes. All (23) such sidechains are listed below:

Mol	Chain	Res	Type
1	A	352	GLN
1	A	356	GLN
1	B	354	ASN

Continued on next page...

Continued from previous page...

Mol	Chain	Res	Type
1	D	356	GLN
2	L	114	ASN
2	L	219	HIS
2	L	292	GLN
2	L	307	HIS
2	L	358	HIS
2	L	369	ASN
2	L	435	GLN
2	L	562	ASN
2	L	681	GLN
2	L	711	HIS
2	L	816	HIS
2	L	941	ASN
2	L	944	ASN
2	L	984	GLN
2	L	1143	HIS
2	L	1335	GLN
2	L	1489	GLN
2	L	1941	ASN
2	L	2118	ASN

5.3.3 RNA ⓘ

There are no RNA molecules in this entry.

5.4 Non-standard residues in protein, DNA, RNA chains ⓘ

There are no non-standard protein/DNA/RNA residues in this entry.

5.5 Carbohydrates ⓘ

There are no oligosaccharides in this entry.

5.6 Ligand geometry ⓘ

Of 3 ligands modelled in this entry, 3 are monoatomic - leaving 0 for Mogul analysis.

There are no bond length outliers.

There are no bond angle outliers.

There are no chirality outliers.

There are no torsion outliers.

There are no ring outliers.

No monomer is involved in short contacts.

5.7 Other polymers

There are no such residues in this entry.

5.8 Polymer linkage issues

There are no chain breaks in this entry.

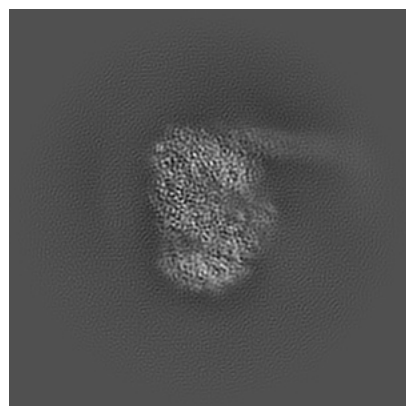
6 Map visualisation [i](#)

This section contains visualisations of the EMDB entry EMD-65364. These allow visual inspection of the internal detail of the map and identification of artifacts.

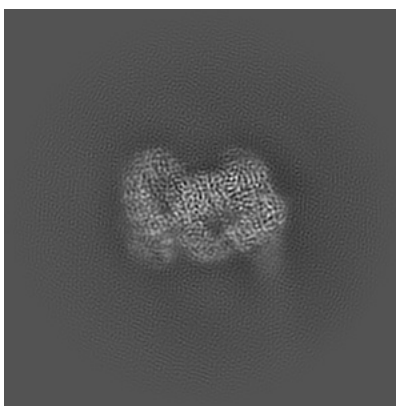
Images derived from a raw map, generated by summing the deposited half-maps, are presented below the corresponding image components of the primary map to allow further visual inspection and comparison with those of the primary map.

6.1 Orthogonal projections [i](#)

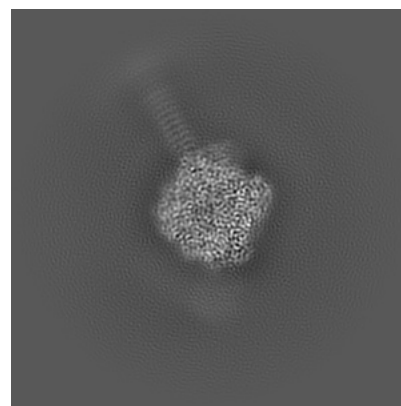
6.1.1 Primary map



X

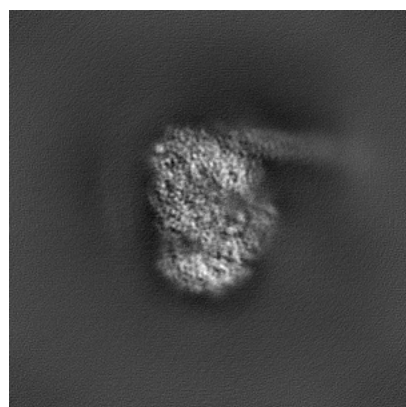


Y

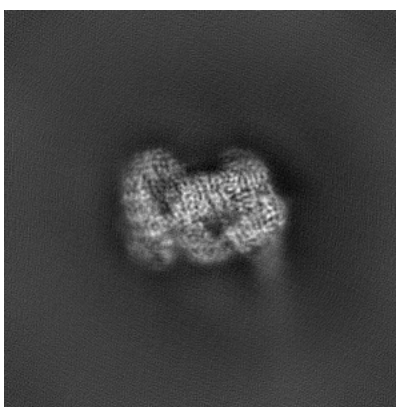


Z

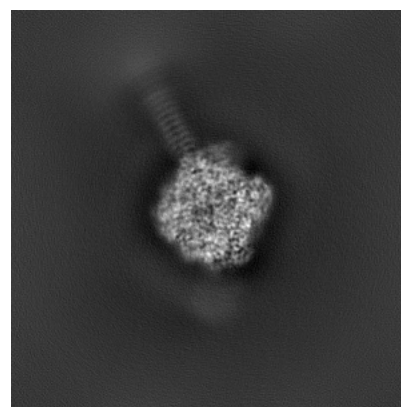
6.1.2 Raw map



X



Y

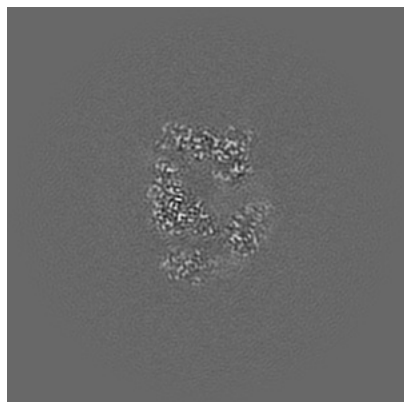


Z

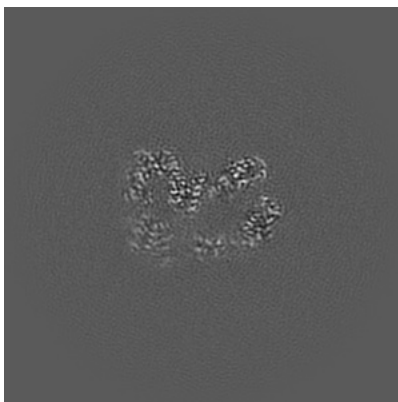
The images above show the map projected in three orthogonal directions.

6.2 Central slices [i](#)

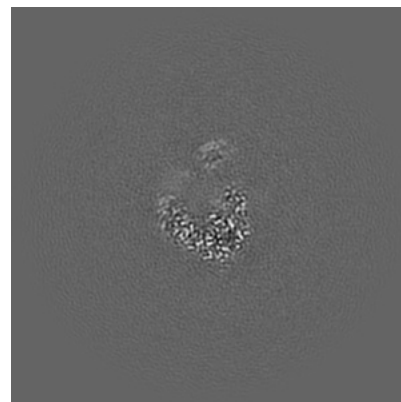
6.2.1 Primary map



X Index: 180

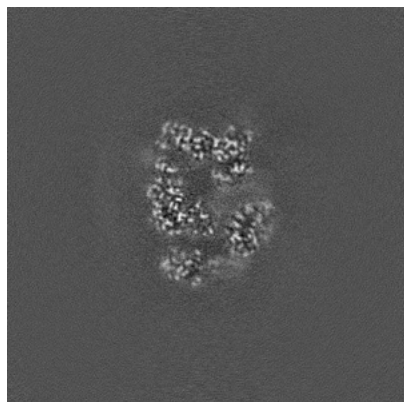


Y Index: 180



Z Index: 180

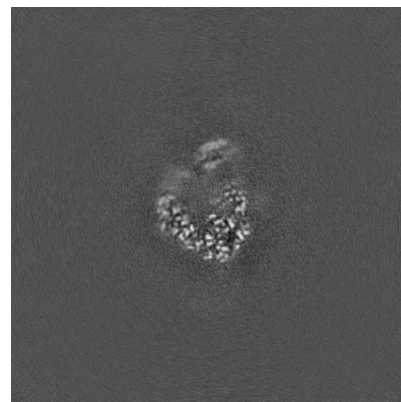
6.2.2 Raw map



X Index: 180



Y Index: 180

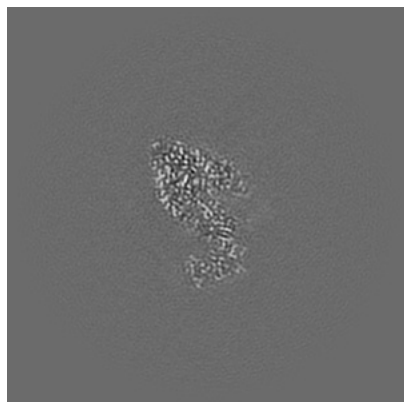


Z Index: 180

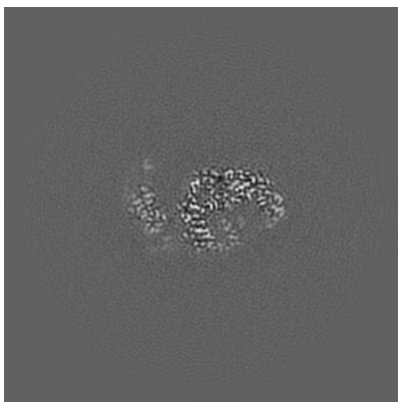
The images above show central slices of the map in three orthogonal directions.

6.3 Largest variance slices [i](#)

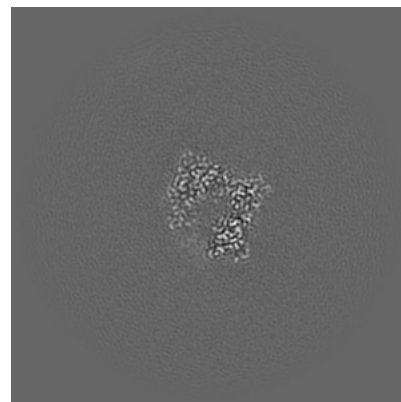
6.3.1 Primary map



X Index: 203

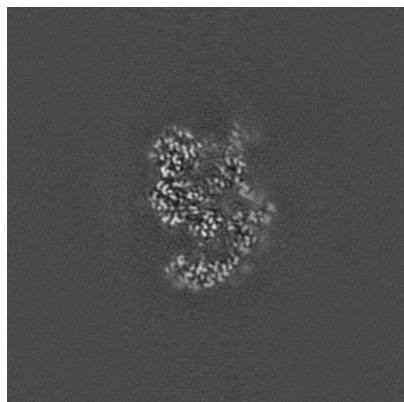


Y Index: 155

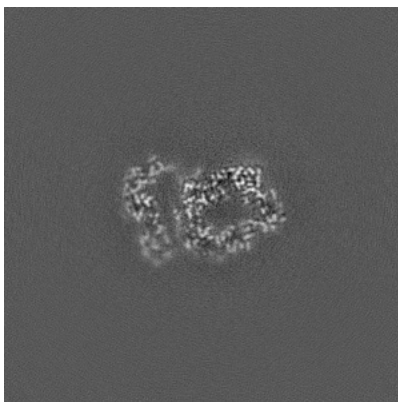


Z Index: 215

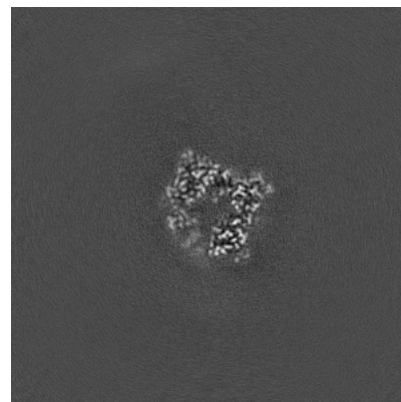
6.3.2 Raw map



X Index: 190



Y Index: 166

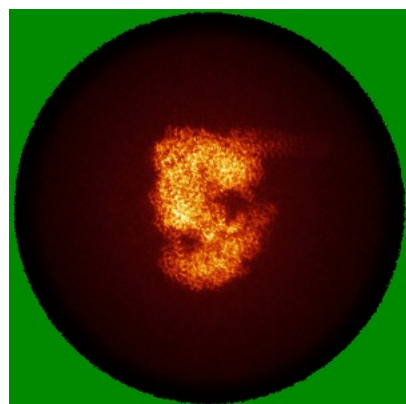


Z Index: 214

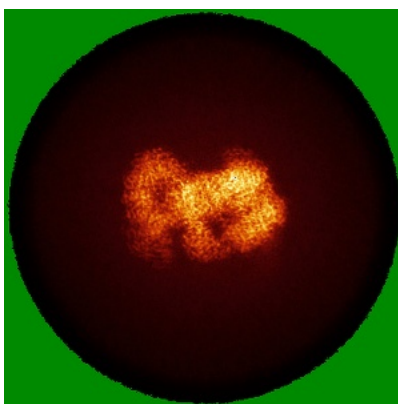
The images above show the largest variance slices of the map in three orthogonal directions.

6.4 Orthogonal standard-deviation projections (False-color) [i](#)

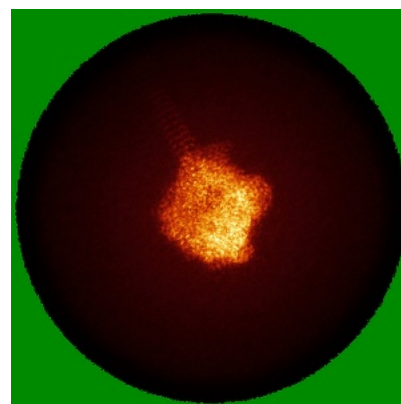
6.4.1 Primary map



X

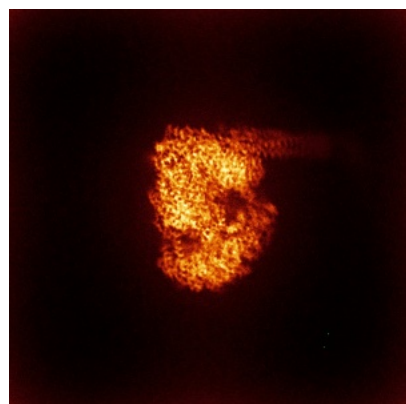


Y

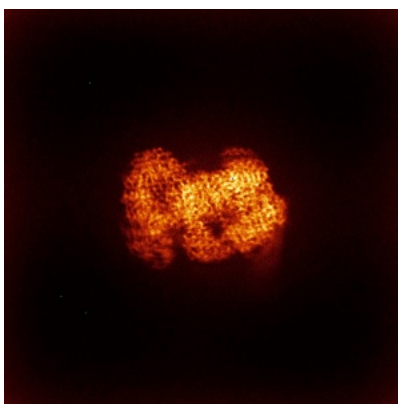


Z

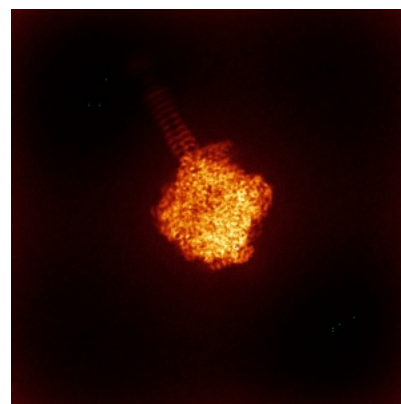
6.4.2 Raw map



X



Y

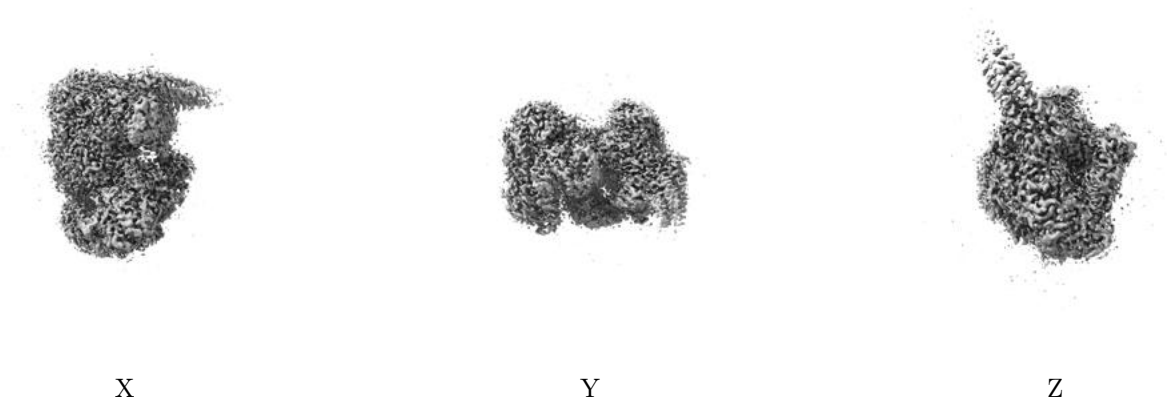


Z

The images above show the map standard deviation projections with false color in three orthogonal directions. Minimum values are shown in green, max in blue, and dark to light orange shades represent small to large values respectively.

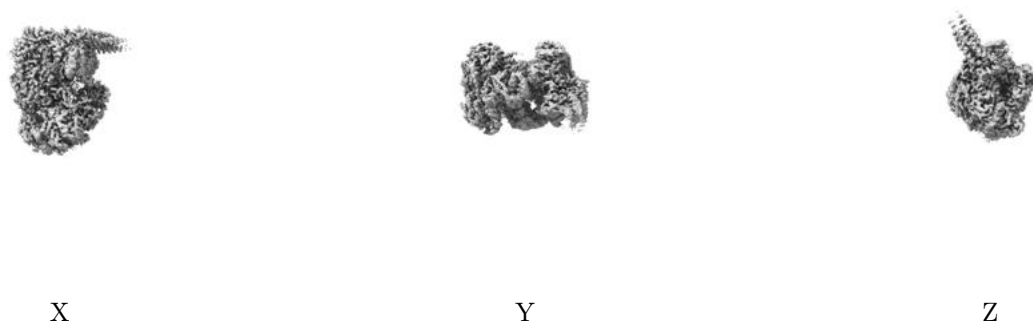
6.5 Orthogonal surface views [i](#)

6.5.1 Primary map



The images above show the 3D surface view of the map at the recommended contour level 0.143. These images, in conjunction with the slice images, may facilitate assessment of whether an appropriate contour level has been provided.

6.5.2 Raw map



These images show the 3D surface of the raw map. The raw map's contour level was selected so that its surface encloses the same volume as the primary map does at its recommended contour level.

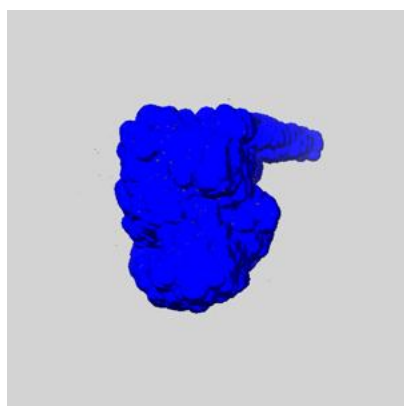
6.6 Mask visualisation [i](#)

This section shows the 3D surface view of the primary map at 50% transparency overlaid with the specified mask at 0% transparency

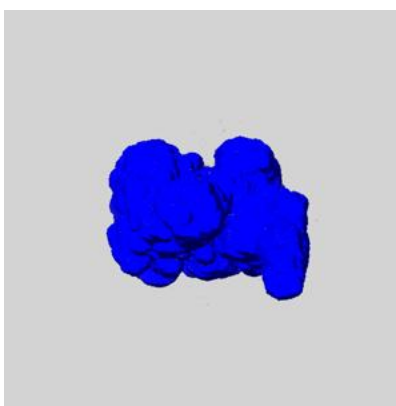
A mask typically either:

- Encompasses the whole structure
- Separates out a domain, a functional unit, a monomer or an area of interest from a larger structure

6.6.1 emd_65364_msk_1.map [i](#)



X



Y

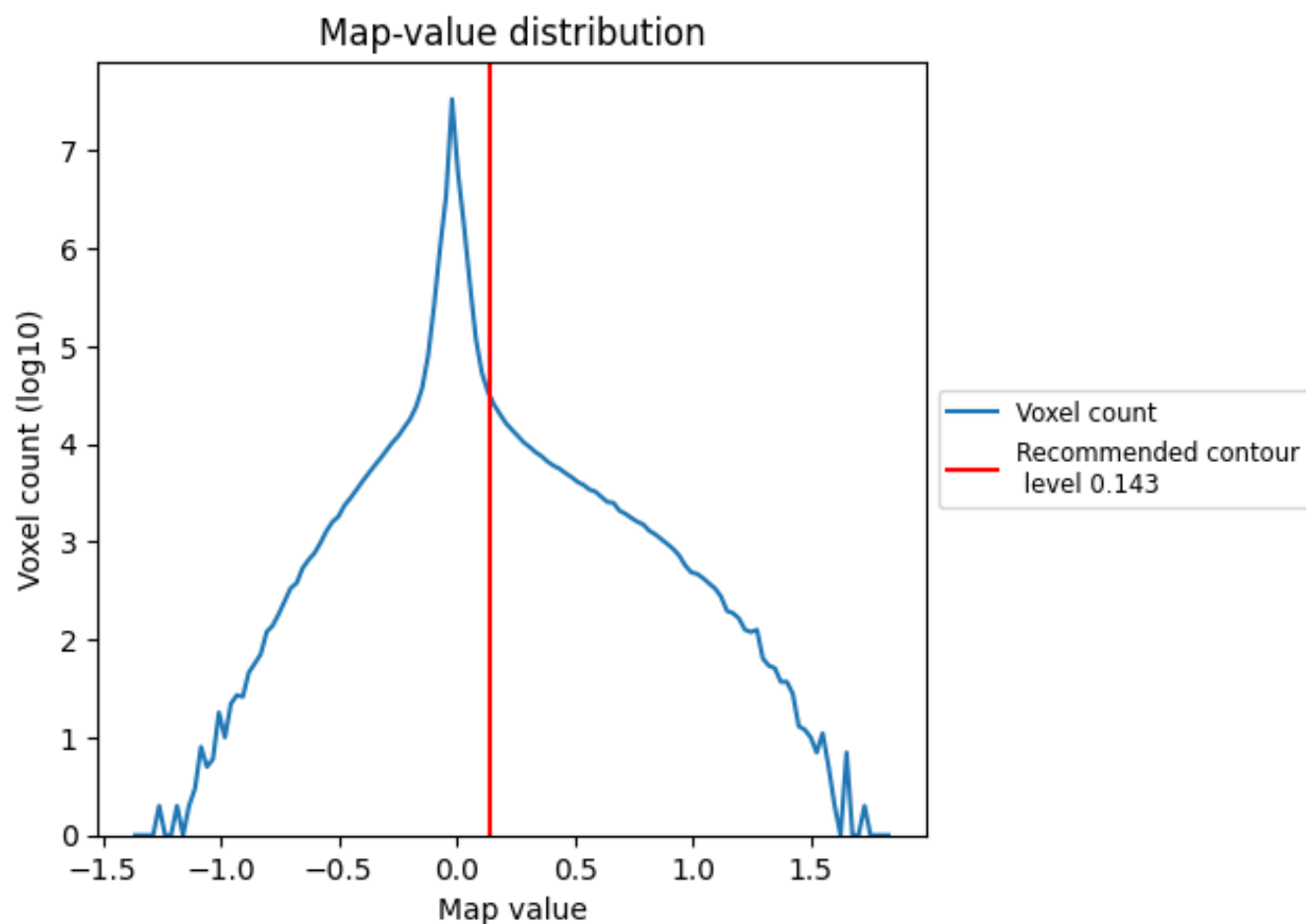


Z

7 Map analysis [i](#)

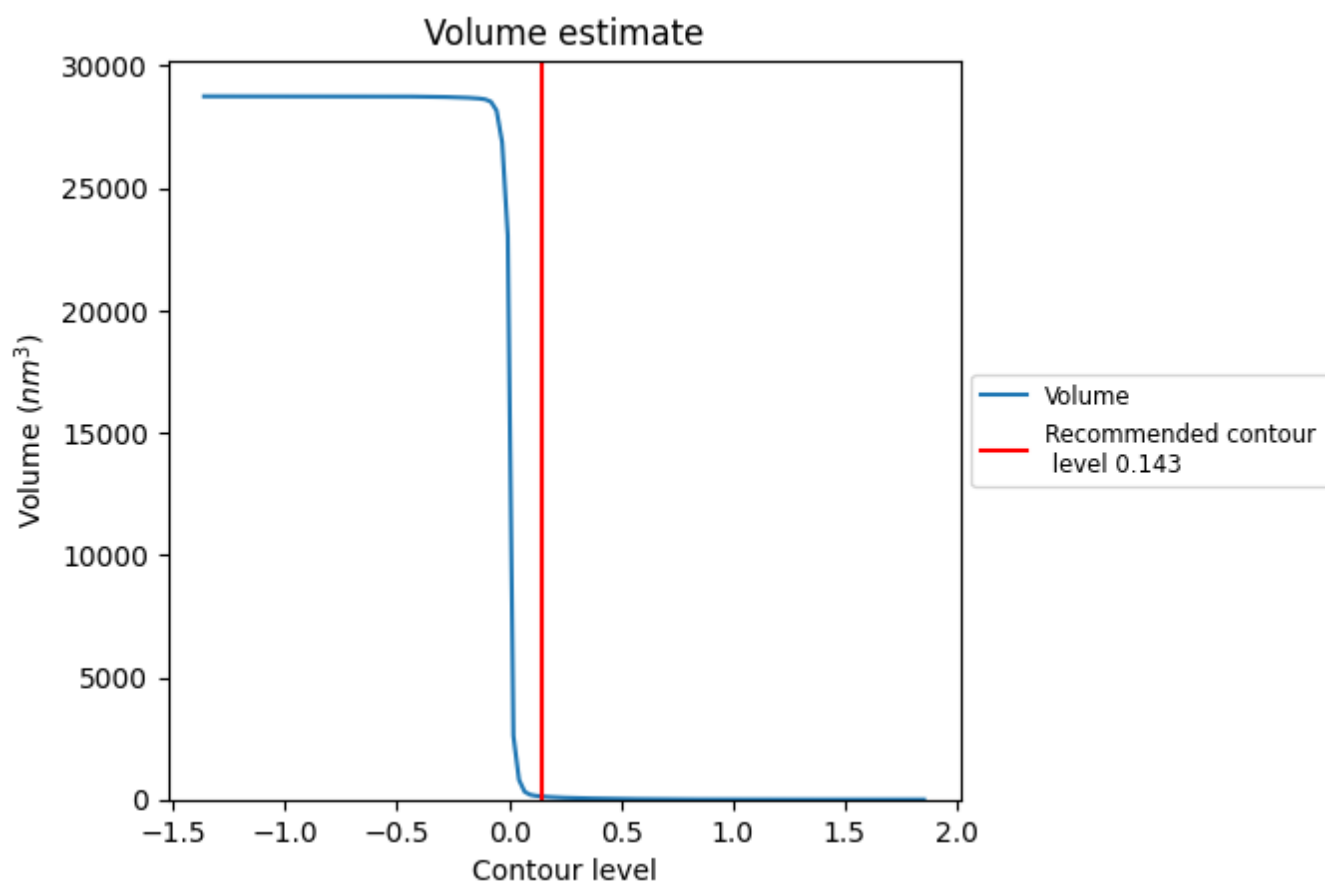
This section contains the results of statistical analysis of the map.

7.1 Map-value distribution [i](#)



The map-value distribution is plotted in 128 intervals along the x-axis. The y-axis is logarithmic. A spike in this graph at zero usually indicates that the volume has been masked.

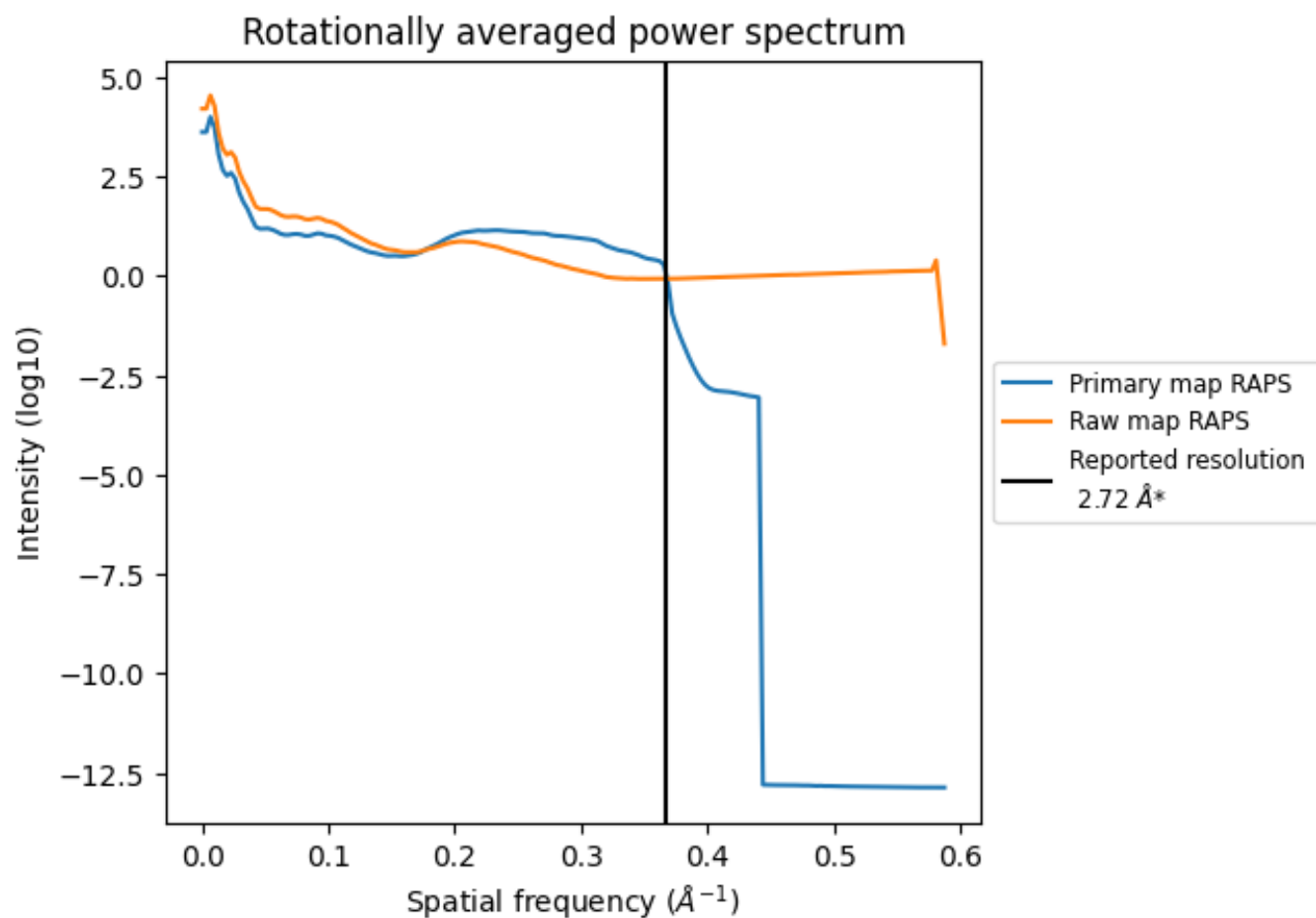
7.2 Volume estimate [i](#)



The volume at the recommended contour level is 130 nm³; this corresponds to an approximate mass of 117 kDa.

The volume estimate graph shows how the enclosed volume varies with the contour level. The recommended contour level is shown as a vertical line and the intersection between the line and the curve gives the volume of the enclosed surface at the given level.

7.3 Rotationally averaged power spectrum ⓘ

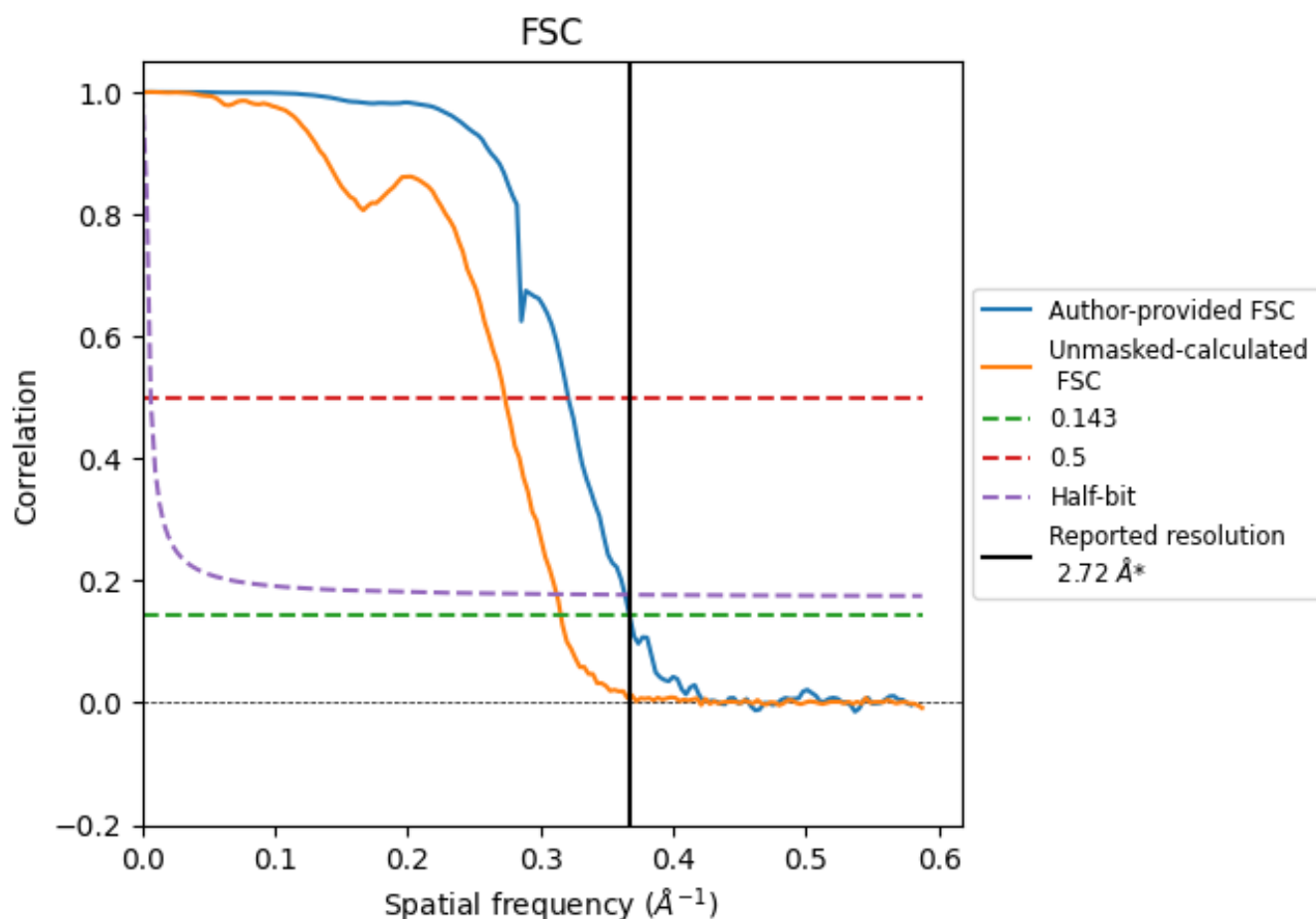


*Reported resolution corresponds to spatial frequency of 0.368 Å⁻¹

8 Fourier-Shell correlation [i](#)

Fourier-Shell Correlation (FSC) is the most commonly used method to estimate the resolution of single-particle and subtomogram-averaged maps. The shape of the curve depends on the imposed symmetry, mask and whether or not the two 3D reconstructions used were processed from a common reference. The reported resolution is shown as a black line. A curve is displayed for the half-bit criterion in addition to lines showing the 0.143 gold standard cut-off and 0.5 cut-off.

8.1 FSC [i](#)



*Reported resolution corresponds to spatial frequency of 0.368 \AA^{-1}

8.2 Resolution estimates [i](#)

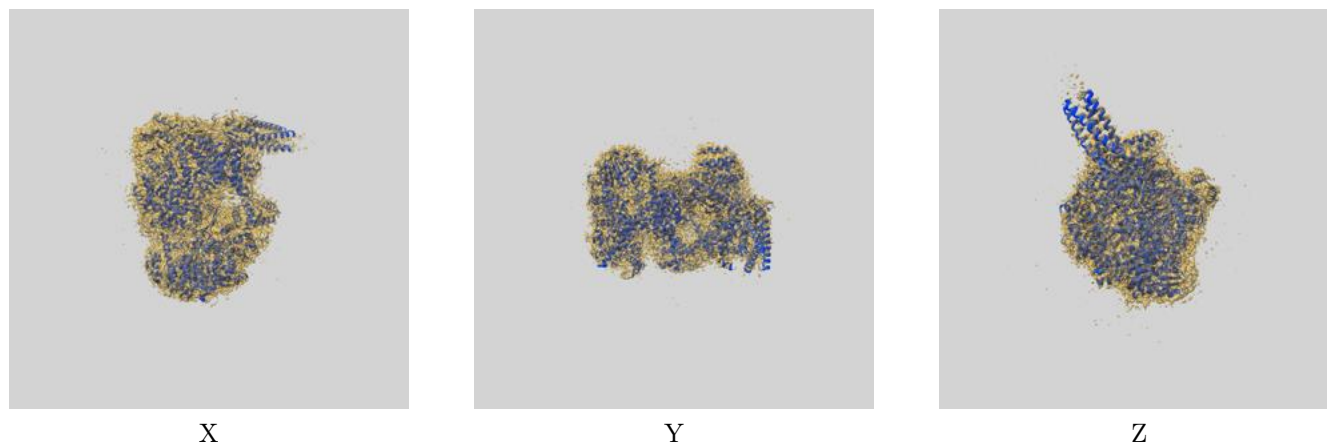
Resolution estimate (Å)	Estimation criterion (FSC cut-off)		
	0.143	0.5	Half-bit
Reported by author	2.72	-	-
Author-provided FSC curve	2.72	3.12	2.75
Unmasked-calculated*	3.17	3.66	3.20

*Resolution estimate based on FSC curve calculated by comparison of deposited half-maps. The value from deposited half-maps intersecting FSC 0.143 CUT-OFF 3.17 differs from the reported value 2.72 by more than 10 %

9 Map-model fit [i](#)

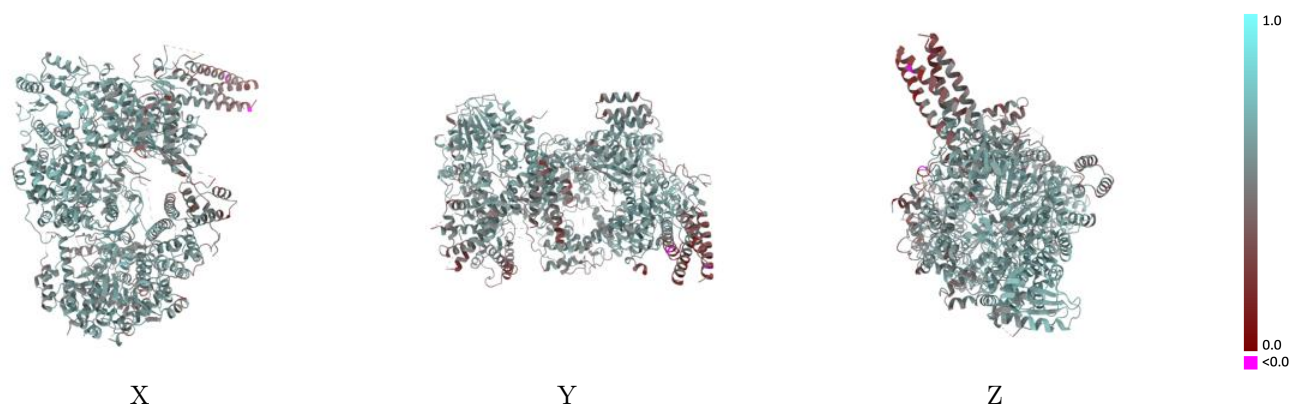
This section contains information regarding the fit between EMDB map EMD-65364 and PDB model 9VUI. Per-residue inclusion information can be found in section [3](#) on page [13](#).

9.1 Map-model overlay [i](#)



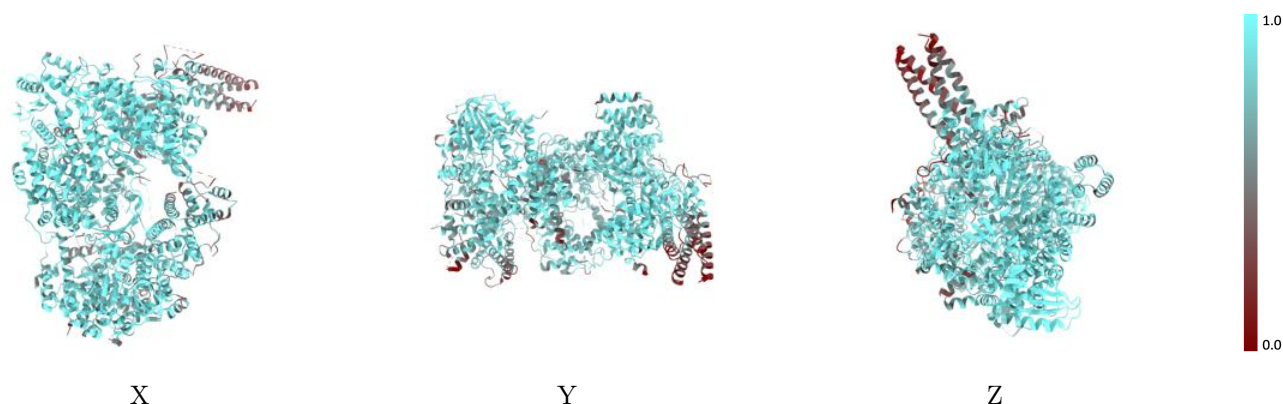
The images above show the 3D surface view of the map at the recommended contour level 0.143 at 50% transparency in yellow overlaid with a ribbon representation of the model coloured in blue. These images allow for the visual assessment of the quality of fit between the atomic model and the map.

9.2 Q-score mapped to coordinate model [i](#)



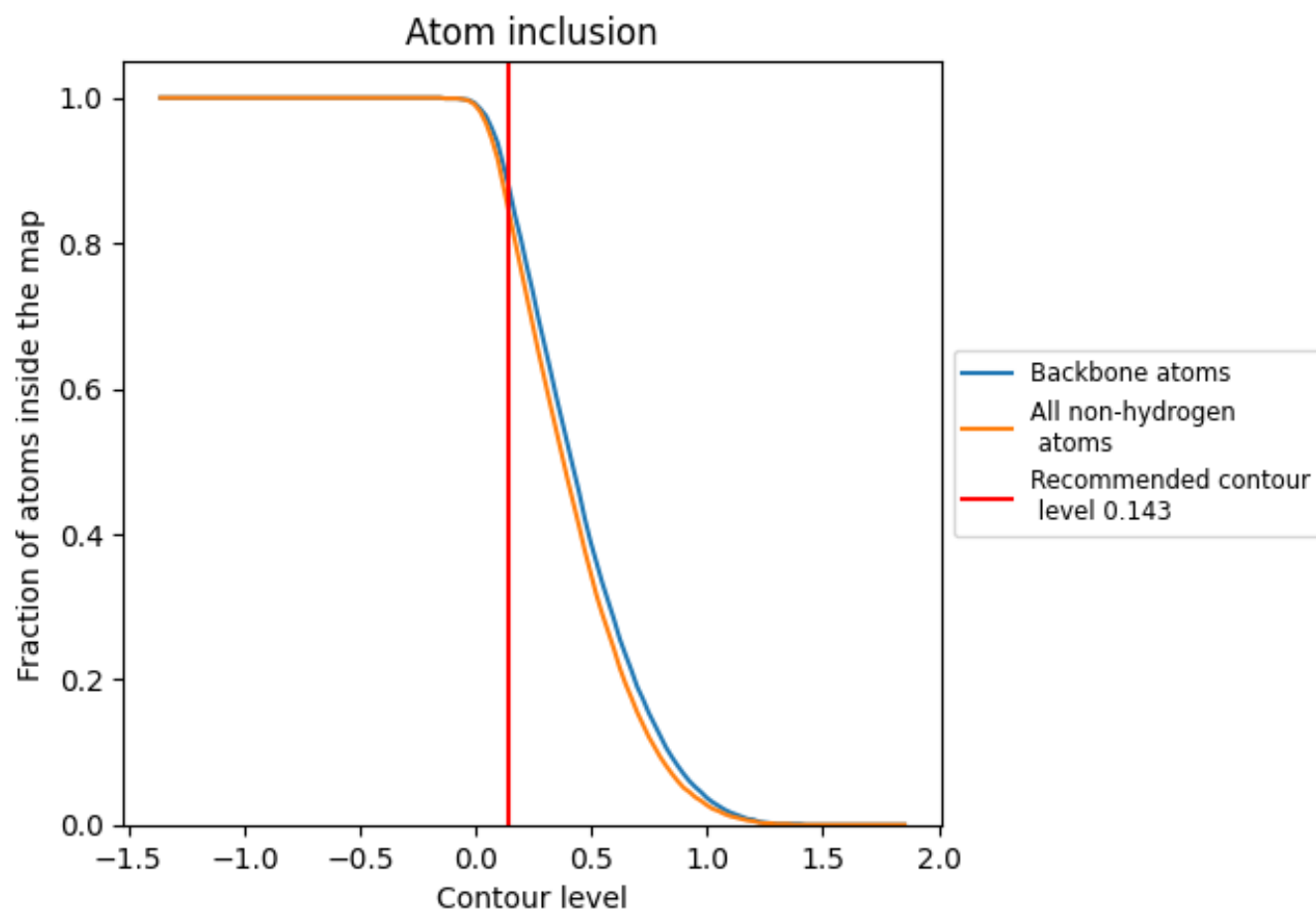
The images above show the model with each residue coloured according to its Q-score. This shows their resolvability in the map with higher Q-score values reflecting better resolvability. Please note: Q-score is calculating the resolvability of atoms, and thus high values are only expected at resolutions at which atoms can be resolved. Low Q-score values may therefore be expected for many entries.

9.3 Atom inclusion mapped to coordinate model [i](#)



The images above show the model with each residue coloured according to its atom inclusion. This shows to what extent they are inside the map at the recommended contour level (0.143).

9.4 Atom inclusion [i](#)



At the recommended contour level, 88% of all backbone atoms, 84% of all non-hydrogen atoms, are inside the map.

9.5 Map-model fit summary ⓘ

The table lists the average atom inclusion at the recommended contour level (0.143) and Q-score for the entire model and for each chain.

Chain	Atom inclusion	Q-score
All	<div><div></div>0.8440</div>	<div><div></div>0.5540</div>
A	<div><div></div>0.6600</div>	<div><div></div>0.4530</div>
B	<div><div></div>0.4100</div>	<div><div></div>0.3720</div>
C	<div><div></div>0.6110</div>	<div><div></div>0.4270</div>
D	<div><div></div>0.6120</div>	<div><div></div>0.4430</div>
L	<div><div></div>0.8820</div>	<div><div></div>0.5750</div>
X	<div><div></div>0.7090</div>	<div><div></div>0.4650</div>
Y	<div><div></div>0.8450</div>	<div><div></div>0.5500</div>

1.0

0.0

<0.0