



Full wwPDB X-ray Structure Validation Report ⓘ

Jan 17, 2023 – 07:54 AM EST

PDB ID : 1VR5
Title : Crystal structure of Oligopeptide ABC transporter, periplasmic oligopeptide-binding (TM1223) from THERMOTOGA MARITIMA at 1.73 Å resolution
Authors : Joint Center for Structural Genomics (JCSG)
Deposited on : 2005-02-11
Resolution : 1.73 Å (reported)

This is a Full wwPDB X-ray Structure Validation Report for a publicly released PDB entry.

We welcome your comments at validation@mail.wwpdb.org

A user guide is available at

<https://www.wwpdb.org/validation/2017/XrayValidationReportHelp>

with specific help available everywhere you see the ⓘ symbol.

The types of validation reports are described at

<http://www.wwpdb.org/validation/2017/FAQs#types>.

The following versions of software and data (see [references ⓘ](#)) were used in the production of this report:

MolProbity : 4.02b-467
Mogul : 1.8.5 (274361), CSD as541be (2020)
Xtriage (Phenix) : 1.13
EDS : 2.31.2
Percentile statistics : 20191225.v01 (using entries in the PDB archive December 25th 2019)
Refmac : 5.8.0158
CCP4 : 7.0.044 (Gargrove)
Ideal geometry (proteins) : Engh & Huber (2001)
Ideal geometry (DNA, RNA) : Parkinson et al. (1996)
Validation Pipeline (wwPDB-VP) : 2.31.2

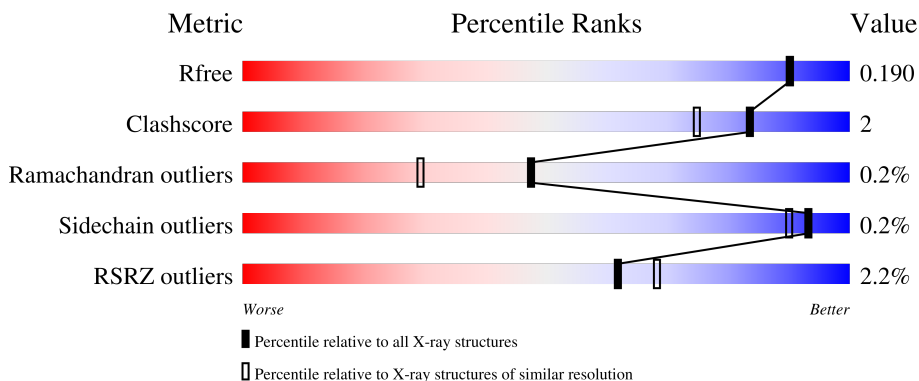
1 Overall quality at a glance

The following experimental techniques were used to determine the structure:

X-RAY DIFFRACTION

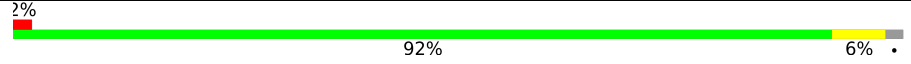
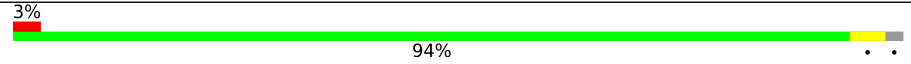
The reported resolution of this entry is 1.73 Å.

Percentile scores (ranging between 0-100) for global validation metrics of the entry are shown in the following graphic. The table shows the number of entries on which the scores are based.



Metric	Whole archive (#Entries)	Similar resolution (#Entries, resolution range(Å))
R_{free}	130704	3764 (1.76-1.72)
Clashscore	141614	3923 (1.76-1.72)
Ramachandran outliers	138981	3878 (1.76-1.72)
Sidechain outliers	138945	3878 (1.76-1.72)
RSRZ outliers	127900	3705 (1.76-1.72)

The table below summarises the geometric issues observed across the polymeric chains and their fit to the electron density. The red, orange, yellow and green segments of the lower bar indicate the fraction of residues that contain outliers for ≥ 3 , 2, 1 and 0 types of geometric quality criteria respectively. A grey segment represents the fraction of residues that are not modelled. The numeric value for each fraction is indicated below the corresponding segment, with a dot representing fractions $\leq 5\%$. The upper red bar (where present) indicates the fraction of residues that have poor fit to the electron density. The numeric value is given above the bar.

Mol	Chain	Length	Quality of chain
1	A	547	 2% 92% 6%
1	B	547	 3% 94%

2 Entry composition i

There are 8 unique types of molecules in this entry. The entry contains 10029 atoms, of which 0 are hydrogens and 0 are deuteriums.

In the tables below, the ZeroOcc column contains the number of atoms modelled with zero occupancy, the AltConf column contains the number of residues with at least one atom in alternate conformation and the Trace column contains the number of residues modelled with at most 2 atoms.

- Molecule 1 is a protein called oligopeptide ABC transporter, periplasmic oligopeptide-binding protein.

Mol	Chain	Residues	Atoms					ZeroOcc	AltConf	Trace	
			Total	C	N	O	S				Se
1	A	536	4379	2881	689	798	2	9	0	9	0
1	B	536	4390	2887	693	799	2	9	0	9	0

There are 42 discrepancies between the modelled and reference sequences:

Chain	Residue	Modelled	Actual	Comment	Reference
A	-11	MSE	-	expression tag	UNP Q9X0V0
A	-10	GLY	-	expression tag	UNP Q9X0V0
A	-9	SER	-	expression tag	UNP Q9X0V0
A	-8	ASP	-	expression tag	UNP Q9X0V0
A	-7	LYS	-	expression tag	UNP Q9X0V0
A	-6	ILE	-	expression tag	UNP Q9X0V0
A	-5	HIS	-	expression tag	UNP Q9X0V0
A	-4	HIS	-	expression tag	UNP Q9X0V0
A	-3	HIS	-	expression tag	UNP Q9X0V0
A	-2	HIS	-	expression tag	UNP Q9X0V0
A	-1	HIS	-	expression tag	UNP Q9X0V0
A	0	HIS	-	expression tag	UNP Q9X0V0
A	156	MSE	MET	modified residue	UNP Q9X0V0
A	237	MSE	MET	modified residue	UNP Q9X0V0
A	239	MSE	MET	modified residue	UNP Q9X0V0
A	272	MSE	MET	modified residue	UNP Q9X0V0
A	298	MSE	MET	modified residue	UNP Q9X0V0
A	315	MSE	MET	modified residue	UNP Q9X0V0
A	331	MSE	MET	modified residue	UNP Q9X0V0
A	350	MSE	MET	modified residue	UNP Q9X0V0
A	391	MSE	MET	modified residue	UNP Q9X0V0
B	-11	MSE	-	expression tag	UNP Q9X0V0
B	-10	GLY	-	expression tag	UNP Q9X0V0
B	-9	SER	-	expression tag	UNP Q9X0V0

Continued on next page...

Continued from previous page...

Chain	Residue	Modelled	Actual	Comment	Reference
B	-8	ASP	-	expression tag	UNP Q9X0V0
B	-7	LYS	-	expression tag	UNP Q9X0V0
B	-6	ILE	-	expression tag	UNP Q9X0V0
B	-5	HIS	-	expression tag	UNP Q9X0V0
B	-4	HIS	-	expression tag	UNP Q9X0V0
B	-3	HIS	-	expression tag	UNP Q9X0V0
B	-2	HIS	-	expression tag	UNP Q9X0V0
B	-1	HIS	-	expression tag	UNP Q9X0V0
B	0	HIS	-	expression tag	UNP Q9X0V0
B	156	MSE	MET	modified residue	UNP Q9X0V0
B	237	MSE	MET	modified residue	UNP Q9X0V0
B	239	MSE	MET	modified residue	UNP Q9X0V0
B	272	MSE	MET	modified residue	UNP Q9X0V0
B	298	MSE	MET	modified residue	UNP Q9X0V0
B	315	MSE	MET	modified residue	UNP Q9X0V0
B	331	MSE	MET	modified residue	UNP Q9X0V0
B	350	MSE	MET	modified residue	UNP Q9X0V0
B	391	MSE	MET	modified residue	UNP Q9X0V0

- Molecule 2 is SODIUM ION (three-letter code: NA) (formula: Na).

Mol	Chain	Residues	Atoms	ZeroOcc	AltConf
2	A	1	Total Na 1 1	0	0
2	B	1	Total Na 1 1	0	0

- Molecule 3 is CHLORIDE ION (three-letter code: CL) (formula: Cl).

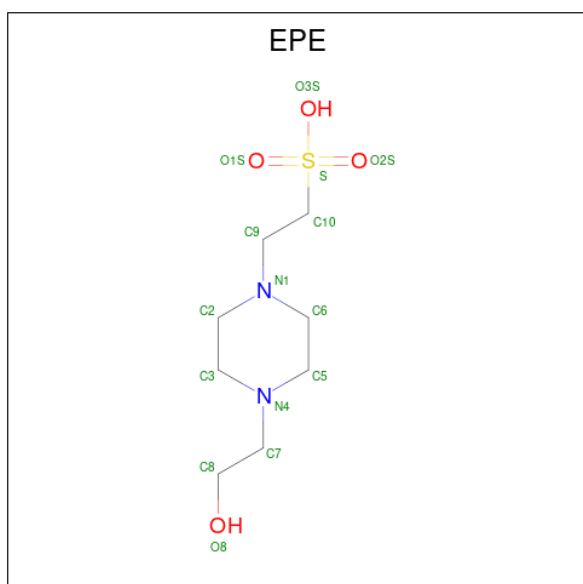
Mol	Chain	Residues	Atoms	ZeroOcc	AltConf
3	A	1	Total Cl 1 1	0	0
3	B	1	Total Cl 1 1	0	0

- Molecule 4 is ACETATE ION (three-letter code: ACT) (formula: C₂H₃O₂).



Mol	Chain	Residues	Atoms			ZeroOcc	AltConf
4	A	1	Total	C	O	0	0
			4	2	2		
4	A	1	Total	C	O	0	0
			4	2	2		
4	A	1	Total	C	O	0	0
			4	2	2		
4	B	1	Total	C	O	0	0
			4	2	2		

- Molecule 5 is 4-(2-HYDROXYETHYL)-1-PIPERAZINE ETHANESULFONIC ACID (three-letter code: EPE) (formula: C₈H₁₈N₂O₄S).



Mol	Chain	Residues	Atoms					ZeroOcc	AltConf
			Total	C	N	O	S		
5	A	1	15	8	2	4	1	0	0

- Molecule 6 is 1,2-ETHANEDIOL (three-letter code: EDO) (formula: $C_2H_6O_2$).



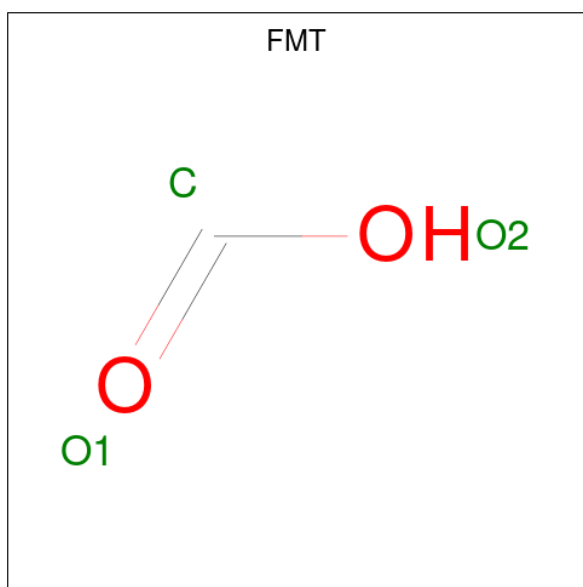
Mol	Chain	Residues	Atoms			ZeroOcc	AltConf
			Total	C	O		
6	A	1	4	2	2	0	0
6	A	1	4	2	2	0	0
6	A	1	4	2	2	0	0
6	A	1	4	2	2	0	0
6	A	1	4	2	2	0	0
6	A	1	4	2	2	0	0
6	A	1	4	2	2	0	0
6	A	1	4	2	2	0	0
6	A	1	4	2	2	0	0
6	A	1	4	2	2	0	0
6	A	1	4	2	2	0	0

Continued on next page...

Continued from previous page...

Mol	Chain	Residues	Atoms	ZeroOcc	AltConf
6	A	1	Total C O 4 2 2	0	0
6	A	1	Total C O 4 2 2	0	0
6	A	1	Total C O 4 2 2	0	0
6	A	1	Total C O 4 2 2	0	0
6	A	1	Total C O 4 2 2	0	0
6	B	1	Total C O 4 2 2	0	0
6	B	1	Total C O 4 2 2	0	0
6	B	1	Total C O 4 2 2	0	0
6	B	1	Total C O 4 2 2	0	0
6	B	1	Total C O 4 2 2	0	0
6	B	1	Total C O 4 2 2	0	0
6	B	1	Total C O 4 2 2	0	0
6	B	1	Total C O 4 2 2	0	0
6	B	1	Total C O 4 2 2	0	0
6	B	1	Total C O 4 2 2	0	0
6	B	1	Total C O 4 2 2	0	0
6	B	1	Total C O 4 2 2	0	0
6	B	1	Total C O 4 2 2	0	0
6	B	1	Total C O 4 2 2	0	0
6	B	1	Total C O 4 2 2	0	0
6	B	1	Total C O 4 2 2	0	0

- Molecule 7 is FORMIC ACID (three-letter code: FMT) (formula: CH₂O₂).



Mol	Chain	Residues	Atoms	ZeroOcc	AltConf
7	A	1	Total C O 3 1 2	0	0
7	A	1	Total C O 3 1 2	0	0

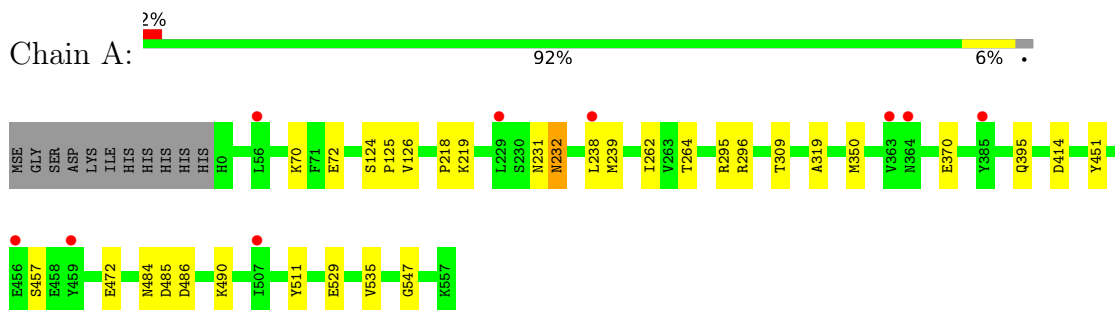
- Molecule 8 is water.

Mol	Chain	Residues	Atoms	ZeroOcc	AltConf
8	A	581	Total O 581 581	0	0
8	B	517	Total O 518 518	0	1

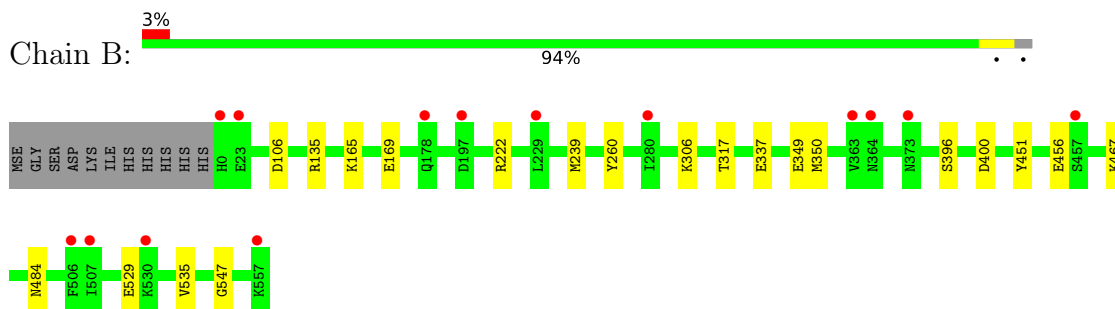
3 Residue-property plots [i](#)

These plots are drawn for all protein, RNA, DNA and oligosaccharide chains in the entry. The first graphic for a chain summarises the proportions of the various outlier classes displayed in the second graphic. The second graphic shows the sequence view annotated by issues in geometry and electron density. Residues are color-coded according to the number of geometric quality criteria for which they contain at least one outlier: green = 0, yellow = 1, orange = 2 and red = 3 or more. A red dot above a residue indicates a poor fit to the electron density ($RSRZ > 2$). Stretches of 2 or more consecutive residues without any outlier are shown as a green connector. Residues present in the sample, but not in the model, are shown in grey.

- Molecule 1: oligopeptide ABC transporter, periplasmic oligopeptide-binding protein



- Molecule 1: oligopeptide ABC transporter, periplasmic oligopeptide-binding protein



4 Data and refinement statistics i

Property	Value	Source
Space group	P 21 21 2	Depositor
Cell constants a, b, c, α , β , γ	140.03Å 96.64Å 115.78Å 90.00° 90.00° 90.00°	Depositor
Resolution (Å)	28.61 – 1.73 28.61 – 1.73	Depositor EDS
% Data completeness (in resolution range)	99.8 (28.61-1.73) 99.9 (28.61-1.73)	Depositor EDS
R_{merge}	(Not available)	Depositor
R_{sym}	0.09	Depositor
$\langle I/\sigma(I) \rangle$ ¹	2.47 (at 1.73Å)	Xtrriage
Refinement program	REFMAC 5.2.0005	Depositor
R, R_{free}	0.152 , 0.182 0.163 , 0.190	Depositor DCC
R_{free} test set	8214 reflections (5.02%)	wwPDB-VP
Wilson B-factor (Å ²)	22.6	Xtrriage
Anisotropy	0.497	Xtrriage
Bulk solvent k_{sol} (e/Å ³), B_{sol} (Å ²)	0.35 , 49.9	EDS
L-test for twinning ²	$\langle L \rangle = 0.48$, $\langle L^2 \rangle = 0.31$	Xtrriage
Estimated twinning fraction	No twinning to report.	Xtrriage
F_o, F_c correlation	0.97	EDS
Total number of atoms	10029	wwPDB-VP
Average B, all atoms (Å ²)	28.0	wwPDB-VP

Xtrriage's analysis on translational NCS is as follows: *The largest off-origin peak in the Patterson function is 3.13% of the height of the origin peak. No significant pseudotranslation is detected.*

¹Intensities estimated from amplitudes.

²Theoretical values of $\langle |L| \rangle$, $\langle L^2 \rangle$ for acentric reflections are 0.5, 0.333 respectively for untwinned datasets, and 0.375, 0.2 for perfectly twinned datasets.

5 Model quality [i](#)

5.1 Standard geometry [i](#)

Bond lengths and bond angles in the following residue types are not validated in this section: NA, ACT, EPE, EDO, FMT, CL

The Z score for a bond length (or angle) is the number of standard deviations the observed value is removed from the expected value. A bond length (or angle) with $|Z| > 5$ is considered an outlier worth inspection. RMSZ is the root-mean-square of all Z scores of the bond lengths (or angles).

Mol	Chain	Bond lengths		Bond angles	
		RMSZ	# Z >5	RMSZ	# Z >5
1	A	0.79	0/4555	0.78	2/6214 (0.0%)
1	B	0.74	0/4567	0.74	2/6227 (0.0%)
All	All	0.76	0/9122	0.76	4/12441 (0.0%)

There are no bond length outliers.

All (4) bond angle outliers are listed below:

Mol	Chain	Res	Type	Atoms	Z	Observed(°)	Ideal(°)
1	B	222	ARG	NE-CZ-NH1	6.29	123.44	120.30
1	B	467	LYS	CD-CE-NZ	5.57	124.50	111.70
1	A	486	ASP	CB-CG-OD1	5.23	123.01	118.30
1	A	296	ARG	NE-CZ-NH1	5.13	122.86	120.30

There are no chirality outliers.

There are no planarity outliers.

5.2 Too-close contacts [i](#)

In the following table, the Non-H and H(model) columns list the number of non-hydrogen atoms and hydrogen atoms in the chain respectively. The H(added) column lists the number of hydrogen atoms added and optimized by MolProbity. The Clashes column lists the number of clashes within the asymmetric unit, whereas Symm-Clashes lists symmetry-related clashes.

Mol	Chain	Non-H	H(model)	H(added)	Clashes	Symm-Clashes
1	A	4379	0	4188	27	0
1	B	4390	0	4217	15	0
2	A	1	0	0	0	0
2	B	1	0	0	0	0
3	A	1	0	0	0	0

Continued on next page...

Continued from previous page...

Mol	Chain	Non-H	H(model)	H(added)	Clashes	Symm-Clashes
3	B	1	0	0	0	0
4	A	12	0	9	1	0
4	B	4	0	3	0	0
5	A	15	0	18	1	0
6	A	64	0	96	8	0
6	B	56	0	84	1	0
7	A	6	0	2	1	0
8	A	581	0	0	8	0
8	B	518	0	0	6	0
All	All	10029	0	8617	42	0

The all-atom clashscore is defined as the number of clashes found per 1000 atoms (including hydrogen atoms). The all-atom clashscore for this structure is 2.

All (42) close contacts within the same asymmetric unit are listed below, sorted by their clash magnitude.

Atom-1	Atom-2	Interatomic distance (Å)	Clash overlap (Å)
1:B:350:MSE:SE	1:B:350:MSE:CE	2.15	1.44
1:A:350:MSE:SE	1:A:350:MSE:CE	2.18	1.42
1:A:529[B]:GLU:OE1	8:A:631:HOH:O	1.89	0.90
1:B:337[A]:GLU:OE1	8:B:835:HOH:O	2.00	0.79
1:B:239:MSE:HE1	1:B:260:TYR:CG	2.17	0.79
1:A:370:GLU:OE2	8:A:1076:HOH:O	2.00	0.78
1:B:529[B]:GLU:OE2	8:B:601:HOH:O	2.10	0.67
1:B:239:MSE:HE1	1:B:260:TYR:CD1	2.30	0.66
1:B:317[B]:THR:CG2	8:B:651:HOH:O	2.46	0.62
1:A:295:ARG:HH22	7:A:568:FMT:C	2.13	0.62
1:B:165:LYS:O	1:B:169:GLU:HB2	2.04	0.58
1:B:306:LYS:NZ	1:B:400:ASP:OD1	2.30	0.58
1:A:219:LYS:HE2	8:A:1007:HOH:O	2.05	0.57
1:A:414:ASP:OD2	5:A:5:EPE:H52	2.06	0.56
1:A:72:GLU:OE1	8:A:793:HOH:O	2.17	0.56
1:B:317[B]:THR:HG22	8:B:651:HOH:O	2.06	0.55
1:A:264:THR:H	4:A:7:ACT:H3	1.72	0.55
1:B:484:ASN:HD22	6:B:21:EDO:C1	2.19	0.55
1:A:535:VAL:O	1:A:547:GLY:HA2	2.07	0.54
1:A:126:VAL:N	6:A:564:EDO:H12	2.23	0.53
1:A:395:GLN:HE22	6:A:565:EDO:H21	1.75	0.52
1:A:238[A]:LEU:HG	1:A:262[A]:ILE:HD11	1.93	0.50
1:A:239:MSE:HE1	1:A:262[B]:ILE:HG22	1.94	0.48
1:B:349:GLU:HG2	8:B:999:HOH:O	2.14	0.48

Continued on next page...

Continued from previous page...

Atom-1	Atom-2	Interatomic distance (Å)	Clash overlap (Å)
1:A:484:ASN:H	6:A:19:EDO:C1	2.27	0.48
1:A:472:GLU:OE2	6:A:566:EDO:O1	2.32	0.47
1:A:309[A]:THR:HG23	8:A:1063:HOH:O	2.15	0.47
1:A:231:ASN:HA	6:A:562:EDO:H22	1.98	0.45
1:A:319:ALA:HA	1:A:511:TYR:CE2	2.52	0.45
1:B:535:VAL:O	1:B:547:GLY:HA2	2.16	0.45
1:B:306:LYS:HE2	1:B:396:SER:OG	2.17	0.44
1:A:218:PRO:HG2	8:A:685:HOH:O	2.17	0.43
1:A:395:GLN:HE22	6:A:565:EDO:C2	2.30	0.43
1:A:485:ASP:HB2	6:A:19:EDO:H21	2.00	0.43
1:A:70[A]:LYS:CG	8:A:784:HOH:O	2.66	0.42
1:A:490:LYS:NZ	8:A:1005:HOH:O	2.44	0.42
1:A:124:SER:N	1:A:125:PRO:CD	2.81	0.42
1:A:484:ASN:H	6:A:19:EDO:H11	1.83	0.42
1:B:456:GLU:CG	8:B:937:HOH:O	2.67	0.42
1:B:106:ASP:OD1	1:B:135[B]:ARG:NH1	2.53	0.41
1:A:238[A]:LEU:HG	1:A:262[A]:ILE:CD1	2.51	0.41

There are no symmetry-related clashes.

5.3 Torsion angles [i](#)

5.3.1 Protein backbone [i](#)

In the following table, the Percentiles column shows the percent Ramachandran outliers of the chain as a percentile score with respect to all X-ray entries followed by that with respect to entries of similar resolution.

The Analysed column shows the number of residues for which the backbone conformation was analysed, and the total number of residues.

Mol	Chain	Analysed	Favoured	Allowed	Outliers	Percentiles
1	A	543/547 (99%)	528 (97%)	14 (3%)	1 (0%)	47 29
1	B	543/547 (99%)	526 (97%)	16 (3%)	1 (0%)	47 29
All	All	1086/1094 (99%)	1054 (97%)	30 (3%)	2 (0%)	47 29

All (2) Ramachandran outliers are listed below:

Mol	Chain	Res	Type
1	A	451	TYR

Continued on next page...

Continued from previous page...

Mol	Chain	Res	Type
1	B	451	TYR

5.3.2 Protein sidechains [i](#)

In the following table, the Percentiles column shows the percent sidechain outliers of the chain as a percentile score with respect to all X-ray entries followed by that with respect to entries of similar resolution.

The Analysed column shows the number of residues for which the sidechain conformation was analysed, and the total number of residues.

Mol	Chain	Analysed	Rotameric	Outliers	Percentiles
1	A	457/464 (98%)	454 (99%)	3 (1%)	84 75
1	B	460/464 (99%)	460 (100%)	0	100 100
All	All	917/928 (99%)	914 (100%)	3 (0%)	93 89

All (3) residues with a non-rotameric sidechain are listed below:

Mol	Chain	Res	Type
1	A	232[A]	ASN
1	A	232[B]	ASN
1	A	457	SER

Sometimes sidechains can be flipped to improve hydrogen bonding and reduce clashes. All (2) such sidechains are listed below:

Mol	Chain	Res	Type
1	A	395	GLN
1	B	484	ASN

5.3.3 RNA [i](#)

There are no RNA molecules in this entry.

5.4 Non-standard residues in protein, DNA, RNA chains [i](#)

There are no non-standard protein/DNA/RNA residues in this entry.

5.5 Carbohydrates [i](#)

There are no monosaccharides in this entry.

5.6 Ligand geometry [i](#)

Of 41 ligands modelled in this entry, 4 are monoatomic - leaving 37 for Mogul analysis.

In the following table, the Counts columns list the number of bonds (or angles) for which Mogul statistics could be retrieved, the number of bonds (or angles) that are observed in the model and the number of bonds (or angles) that are defined in the Chemical Component Dictionary. The Link column lists molecule types, if any, to which the group is linked. The Z score for a bond length (or angle) is the number of standard deviations the observed value is removed from the expected value. A bond length (or angle) with $|Z| > 2$ is considered an outlier worth inspection. RMSZ is the root-mean-square of all Z scores of the bond lengths (or angles).

Mol	Type	Chain	Res	Link	Bond lengths			Bond angles		
					Counts	RMSZ	# Z > 2	Counts	RMSZ	# Z > 2
6	EDO	B	22	-	3,3,3	0.51	0	2,2,2	0.12	0
6	EDO	A	13	-	3,3,3	0.30	0	2,2,2	0.71	0
4	ACT	A	6	-	3,3,3	0.74	0	3,3,3	1.71	1 (33%)
6	EDO	B	21	-	3,3,3	0.40	0	2,2,2	0.53	0
6	EDO	B	562	-	3,3,3	0.81	0	2,2,2	0.41	0
6	EDO	A	564	-	3,3,3	0.23	0	2,2,2	0.38	0
6	EDO	A	565	-	3,3,3	0.41	0	2,2,2	0.50	0
6	EDO	A	16	-	3,3,3	0.53	0	2,2,2	0.31	0
6	EDO	B	18	-	3,3,3	0.56	0	2,2,2	0.18	0
5	EPE	A	5	-	15,15,15	1.19	1 (6%)	18,20,20	1.60	4 (22%)
6	EDO	B	564	-	3,3,3	0.68	0	2,2,2	0.37	0
6	EDO	A	558	-	3,3,3	0.35	0	2,2,2	0.52	0
6	EDO	A	562	-	3,3,3	0.68	0	2,2,2	0.18	0
6	EDO	B	563	-	3,3,3	0.46	0	2,2,2	0.36	0
6	EDO	A	560	-	3,3,3	0.58	0	2,2,2	0.11	0
7	FMT	A	568	-	2,2,2	0.57	0	1,1,1	0.32	0
6	EDO	B	560	-	3,3,3	0.42	0	2,2,2	0.51	0
6	EDO	A	561	-	3,3,3	0.45	0	2,2,2	0.22	0
6	EDO	A	15	-	3,3,3	0.39	0	2,2,2	0.36	0
6	EDO	A	567	-	3,3,3	0.49	0	2,2,2	0.32	0
6	EDO	B	11	-	3,3,3	0.54	0	2,2,2	0.49	0
6	EDO	B	559	-	3,3,3	0.49	0	2,2,2	0.06	0
6	EDO	B	558	-	3,3,3	0.52	0	2,2,2	0.19	0
6	EDO	A	19	-	3,3,3	0.45	0	2,2,2	0.30	0
6	EDO	B	10	-	3,3,3	0.34	0	2,2,2	0.73	0
6	EDO	A	14	-	3,3,3	0.36	0	2,2,2	0.40	0
6	EDO	A	12	-	3,3,3	0.27	0	2,2,2	0.58	0

Mol	Type	Chain	Res	Link	Bond lengths			Bond angles		
					Counts	RMSZ	# Z > 2	Counts	RMSZ	# Z > 2
4	ACT	A	7	-	3,3,3	0.83	0	3,3,3	0.90	0
4	ACT	B	8	-	3,3,3	0.80	0	3,3,3	1.12	0
6	EDO	B	561	-	3,3,3	0.46	0	2,2,2	0.38	0
6	EDO	B	17	-	3,3,3	0.46	0	2,2,2	0.23	0
6	EDO	A	559	-	3,3,3	0.57	0	2,2,2	0.10	0
4	ACT	A	9	-	3,3,3	0.82	0	3,3,3	1.04	0
6	EDO	A	563	-	3,3,3	0.51	0	2,2,2	0.20	0
6	EDO	A	566	-	3,3,3	0.41	0	2,2,2	0.48	0
6	EDO	B	20	-	3,3,3	0.57	0	2,2,2	0.44	0
7	FMT	A	569	-	2,2,2	0.58	0	1,1,1	0.52	0

In the following table, the Chirals column lists the number of chiral outliers, the number of chiral centers analysed, the number of these observed in the model and the number defined in the Chemical Component Dictionary. Similar counts are reported in the Torsion and Rings columns. '-' means no outliers of that kind were identified.

Mol	Type	Chain	Res	Link	Chirals	Torsions	Rings
6	EDO	B	22	-	-	1/1/1/1	-
6	EDO	A	13	-	-	0/1/1/1	-
6	EDO	B	21	-	-	1/1/1/1	-
6	EDO	B	562	-	-	0/1/1/1	-
6	EDO	A	564	-	-	0/1/1/1	-
6	EDO	A	565	-	-	0/1/1/1	-
6	EDO	A	16	-	-	0/1/1/1	-
6	EDO	B	18	-	-	0/1/1/1	-
5	EPE	A	5	-	-	5/9/19/19	0/1/1/1
6	EDO	B	564	-	-	1/1/1/1	-
6	EDO	A	558	-	-	0/1/1/1	-
6	EDO	A	562	-	-	1/1/1/1	-
6	EDO	B	563	-	-	1/1/1/1	-
6	EDO	A	560	-	-	1/1/1/1	-
6	EDO	B	560	-	-	0/1/1/1	-
6	EDO	A	561	-	-	1/1/1/1	-
6	EDO	A	15	-	-	0/1/1/1	-
6	EDO	A	567	-	-	1/1/1/1	-
6	EDO	B	11	-	-	0/1/1/1	-
6	EDO	B	559	-	-	1/1/1/1	-
6	EDO	B	558	-	-	1/1/1/1	-
6	EDO	A	19	-	-	0/1/1/1	-
6	EDO	B	10	-	-	0/1/1/1	-
6	EDO	A	14	-	-	0/1/1/1	-
6	EDO	A	12	-	-	1/1/1/1	-

Continued on next page...

Continued from previous page...

Mol	Type	Chain	Res	Link	Chirals	Torsions	Rings
6	EDO	B	561	-	-	0/1/1/1	-
6	EDO	B	17	-	-	0/1/1/1	-
6	EDO	A	559	-	-	0/1/1/1	-
6	EDO	B	20	-	-	1/1/1/1	-
6	EDO	A	563	-	-	0/1/1/1	-
6	EDO	A	566	-	-	0/1/1/1	-

All (1) bond length outliers are listed below:

Mol	Chain	Res	Type	Atoms	Z	Observed(Å)	Ideal(Å)
5	A	5	EPE	C10-S	4.18	1.83	1.77

All (5) bond angle outliers are listed below:

Mol	Chain	Res	Type	Atoms	Z	Observed(°)	Ideal(°)
5	A	5	EPE	O3S-S-O1S	2.83	118.20	111.27
5	A	5	EPE	C5-C6-N1	2.68	116.13	110.64
5	A	5	EPE	O3S-S-C10	2.43	109.70	105.77
4	A	6	ACT	OXT-C-CH3	2.24	124.43	115.18
5	A	5	EPE	C6-C5-N4	2.03	114.80	110.64

There are no chirality outliers.

All (17) torsion outliers are listed below:

Mol	Chain	Res	Type	Atoms
5	A	5	EPE	C10-C9-N1-C2
5	A	5	EPE	C8-C7-N4-C3
6	B	563	EDO	O1-C1-C2-O2
5	A	5	EPE	N4-C7-C8-O8
6	B	558	EDO	O1-C1-C2-O2
6	A	560	EDO	O1-C1-C2-O2
6	A	561	EDO	O1-C1-C2-O2
6	B	559	EDO	O1-C1-C2-O2
6	B	564	EDO	O1-C1-C2-O2
6	A	562	EDO	O1-C1-C2-O2
6	A	567	EDO	O1-C1-C2-O2
6	B	21	EDO	O1-C1-C2-O2
5	A	5	EPE	C8-C7-N4-C5
6	B	22	EDO	O1-C1-C2-O2
6	A	12	EDO	O1-C1-C2-O2
6	B	20	EDO	O1-C1-C2-O2

Continued on next page...

Continued from previous page...

Mol	Chain	Res	Type	Atoms
5	A	5	EPE	S-C10-C9-N1

There are no ring outliers.

9 monomers are involved in 12 short contacts:

Mol	Chain	Res	Type	Clashes	Symm-Clashes
6	B	21	EDO	1	0
6	A	564	EDO	1	0
6	A	565	EDO	2	0
5	A	5	EPE	1	0
6	A	562	EDO	1	0
7	A	568	FMT	1	0
6	A	19	EDO	3	0
4	A	7	ACT	1	0
6	A	566	EDO	1	0

5.7 Other polymers [i](#)

There are no such residues in this entry.

5.8 Polymer linkage issues [i](#)

There are no chain breaks in this entry.

6 Fit of model and data [i](#)

6.1 Protein, DNA and RNA chains [i](#)

In the following table, the column labelled ‘#RSRZ > 2’ contains the number (and percentage) of RSRZ outliers, followed by percent RSRZ outliers for the chain as percentile scores relative to all X-ray entries and entries of similar resolution. The OWAB column contains the minimum, median, 95th percentile and maximum values of the occupancy-weighted average B-factor per residue. The column labelled ‘Q < 0.9’ lists the number of (and percentage) of residues with an average occupancy less than 0.9.

Mol	Chain	Analysed	<RSRZ>	#RSRZ>2	OWAB(Å ²)	Q<0.9
1	A	527/547 (96%)	-0.00	9 (1%) 70 76	18, 25, 37, 59	0
1	B	527/547 (96%)	0.03	14 (2%) 54 60	19, 25, 36, 49	0
All	All	1054/1094 (96%)	0.01	23 (2%) 62 68	18, 25, 37, 59	0

All (23) RSRZ outliers are listed below:

Mol	Chain	Res	Type	RSRZ
1	B	229	LEU	4.8
1	A	364	ASN	3.8
1	A	456	GLU	3.4
1	B	280	ILE	3.3
1	A	229	LEU	3.1
1	A	459	TYR	2.9
1	B	507	ILE	2.9
1	B	363	VAL	2.8
1	B	557	LYS	2.8
1	A	238[A]	LEU	2.7
1	A	385	TYR	2.5
1	B	23	GLU	2.5
1	B	506	PHE	2.5
1	A	507	ILE	2.5
1	B	0	HIS	2.4
1	B	197	ASP	2.4
1	B	373	ASN	2.3
1	B	530	LYS	2.2
1	B	364	ASN	2.2
1	A	56	LEU	2.2
1	B	178[A]	GLN	2.2
1	A	363	VAL	2.1
1	B	457	SER	2.0

6.2 Non-standard residues in protein, DNA, RNA chains [i](#)

There are no non-standard protein/DNA/RNA residues in this entry.

6.3 Carbohydrates [i](#)

There are no monosaccharides in this entry.

6.4 Ligands [i](#)

In the following table, the Atoms column lists the number of modelled atoms in the group and the number defined in the chemical component dictionary. The B-factors column lists the minimum, median, 95th percentile and maximum values of B factors of atoms in the group. The column labelled 'Q< 0.9' lists the number of atoms with occupancy less than 0.9.

Mol	Type	Chain	Res	Atoms	RSCC	RSR	B-factors(Å ²)	Q<0.9
4	ACT	A	7	4/4	0.58	0.29	50,55,56,57	0
4	ACT	A	9	4/4	0.68	0.25	61,65,66,66	0
6	EDO	A	563	4/4	0.74	0.12	72,72,74,75	0
6	EDO	A	559	4/4	0.75	0.26	73,75,75,77	0
6	EDO	A	566	4/4	0.76	0.32	64,66,66,71	0
6	EDO	B	558	4/4	0.76	0.19	72,73,73,76	0
6	EDO	B	564	4/4	0.78	0.21	46,47,53,61	0
7	FMT	A	568	3/3	0.80	0.20	47,47,49,51	0
6	EDO	B	22	4/4	0.81	0.10	62,66,66,66	0
6	EDO	A	565	4/4	0.81	0.17	67,68,69,69	0
6	EDO	A	19	4/4	0.83	0.27	29,48,58,59	0
6	EDO	B	21	4/4	0.83	0.14	51,52,55,59	0
4	ACT	B	8	4/4	0.83	0.17	47,52,55,56	0
6	EDO	B	560	4/4	0.85	0.18	68,69,70,73	0
6	EDO	B	561	4/4	0.85	0.31	63,66,69,71	0
6	EDO	A	561	4/4	0.85	0.16	75,76,77,78	0
6	EDO	A	562	4/4	0.85	0.19	35,42,45,53	0
6	EDO	A	558	4/4	0.86	0.21	60,60,64,66	0
6	EDO	B	562	4/4	0.86	0.12	35,37,45,47	0
6	EDO	B	18	4/4	0.86	0.16	30,39,49,56	0
6	EDO	A	16	4/4	0.86	0.16	37,39,50,50	0
6	EDO	B	559	4/4	0.87	0.27	67,67,69,71	0
6	EDO	B	20	4/4	0.87	0.15	35,40,49,60	0
6	EDO	A	560	4/4	0.87	0.16	42,46,48,57	0
7	FMT	A	569	3/3	0.87	0.12	51,51,53,53	0
6	EDO	A	12	4/4	0.88	0.16	46,47,47,55	0
6	EDO	B	11	4/4	0.88	0.18	40,43,45,48	0

Continued on next page...

Continued from previous page...

Mol	Type	Chain	Res	Atoms	RSCC	RSR	B-factors(Å ²)	Q<0.9
6	EDO	B	17	4/4	0.89	0.12	31,34,38,42	0
4	ACT	A	6	4/4	0.89	0.12	40,45,48,51	0
6	EDO	B	563	4/4	0.89	0.15	38,59,60,63	0
6	EDO	A	15	4/4	0.90	0.14	52,54,56,57	0
6	EDO	A	564	4/4	0.91	0.11	33,33,37,39	0
6	EDO	A	14	4/4	0.91	0.16	49,50,51,59	0
5	EPE	A	5	15/15	0.95	0.19	30,54,59,61	0
6	EDO	A	567	4/4	0.96	0.25	30,53,53,65	0
6	EDO	A	13	4/4	0.96	0.09	25,26,29,45	0
2	NA	B	2	1/1	0.97	0.33	51,51,51,51	0
3	CL	A	3	1/1	0.97	0.08	40,40,40,40	0
3	CL	B	4	1/1	0.97	0.05	43,43,43,43	0
6	EDO	B	10	4/4	0.98	0.06	23,24,34,36	0
2	NA	A	1	1/1	0.98	0.38	39,39,39,39	0

6.5 Other polymers [i](#)

There are no such residues in this entry.