



# Full wwPDB X-ray Structure Validation Report ⓘ

Dec 9, 2023 – 06:02 pm GMT

PDB ID : 2VP4  
Title : Structural Studies of Nucleoside Analog and Feedback Inhibitor Binding to  
Drosophila Melanogaster Multisubstrate Deoxyribonucleoside Kinase  
Authors : Mikkelsen, N.E.; Munch-Petersen, B.; Eklund, H.  
Deposited on : 2008-02-26  
Resolution : 2.20 Å(reported)

This is a Full wwPDB X-ray Structure Validation Report for a publicly released PDB entry.

We welcome your comments at [validation@mail.wwpdb.org](mailto:validation@mail.wwpdb.org)

A user guide is available at

<https://www.wwpdb.org/validation/2017/XrayValidationReportHelp>

with specific help available everywhere you see the ⓘ symbol.

The types of validation reports are described at

<http://www.wwpdb.org/validation/2017/FAQs#types>.

---

The following versions of software and data (see [references ⓘ](#)) were used in the production of this report:

MolProbity : 4.02b-467  
Mogul : 1.8.4, CSD as541be (2020)  
Xtriage (Phenix) : 1.13  
EDS : 2.36  
buster-report : 1.1.7 (2018)  
Percentile statistics : 20191225.v01 (using entries in the PDB archive December 25th 2019)  
Refmac : 5.8.0158  
CCP4 : 7.0.044 (Gargrove)  
Ideal geometry (proteins) : Engh & Huber (2001)  
Ideal geometry (DNA, RNA) : Parkinson et al. (1996)  
Validation Pipeline (wwPDB-VP) : 2.36

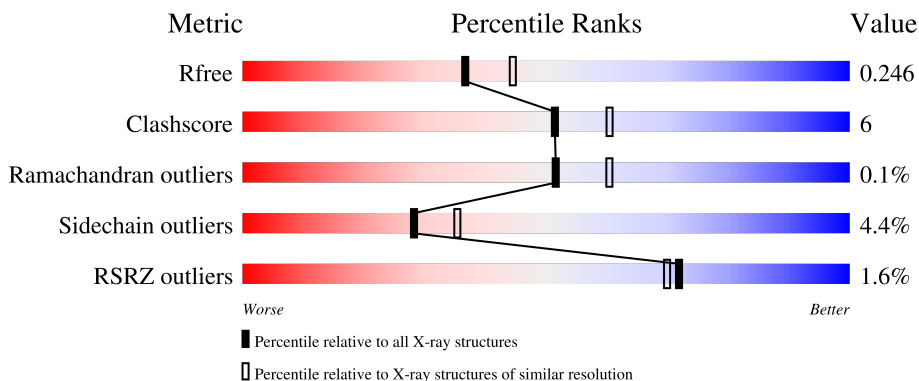
# 1 Overall quality at a glance

The following experimental techniques were used to determine the structure:

*X-RAY DIFFRACTION*

The reported resolution of this entry is 2.20 Å.

Percentile scores (ranging between 0-100) for global validation metrics of the entry are shown in the following graphic. The table shows the number of entries on which the scores are based.



Metric	Whole archive (#Entries)	Similar resolution (#Entries, resolution range(Å))
$R_{free}$	130704	4898 (2.20-2.20)
Clashscore	141614	5594 (2.20-2.20)
Ramachandran outliers	138981	5503 (2.20-2.20)
Sidechain outliers	138945	5504 (2.20-2.20)
RSRZ outliers	127900	4800 (2.20-2.20)

The table below summarises the geometric issues observed across the polymeric chains and their fit to the electron density. The red, orange, yellow and green segments of the lower bar indicate the fraction of residues that contain outliers for  $\geq 3$ , 2, 1 and 0 types of geometric quality criteria respectively. A grey segment represents the fraction of residues that are not modelled. The numeric value for each fraction is indicated below the corresponding segment, with a dot representing fractions  $\leq 5\%$ . The upper red bar (where present) indicates the fraction of residues that have poor fit to the electron density. The numeric value is given above the bar.

Mol	Chain	Length	Quality of chain
1	A	230	 2% 75% 8% • 14%
1	B	230	 % 75% 10% • 14%
1	C	230	 % 73% 11% • 14%
1	D	230	 2% 76% 9% • 13%

## 2 Entry composition [i](#)

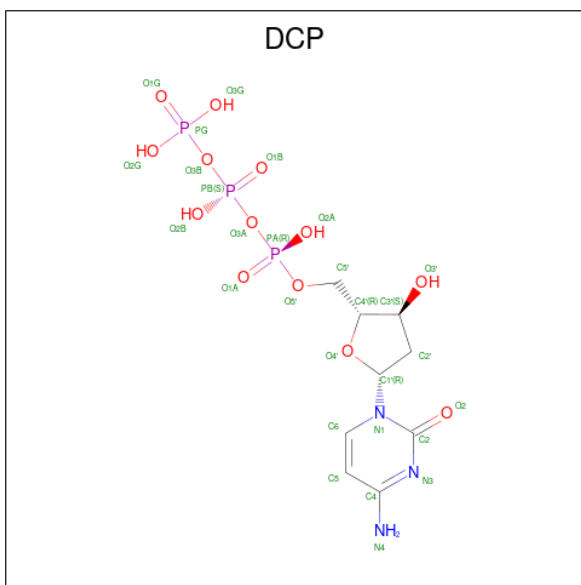
There are 3 unique types of molecules in this entry. The entry contains 7163 atoms, of which 0 are hydrogens and 0 are deuteriums.

In the tables below, the ZeroOcc column contains the number of atoms modelled with zero occupancy, the AltConf column contains the number of residues with at least one atom in alternate conformation and the Trace column contains the number of residues modelled with at most 2 atoms.

- Molecule 1 is a protein called DEOXYNUCLEOSIDE KINASE.

Mol	Chain	Residues	Atoms					ZeroOcc	AltConf	Trace
			Total	C	N	O	S			
1	A	198	Total 1648	C 1052	N 283	O 303	S 10	0	0	0
1	B	198	Total 1648	C 1052	N 283	O 303	S 10	0	0	0
1	C	197	Total 1640	C 1046	N 282	O 302	S 10	0	0	0
1	D	199	Total 1656	C 1056	N 285	O 305	S 10	0	0	0

- Molecule 2 is 2'-DEOXYCYTIDINE-5'-TRIPHOSPHATE (three-letter code: DCP) (formula: C<sub>9</sub>H<sub>16</sub>N<sub>3</sub>O<sub>13</sub>P<sub>3</sub>).



Mol	Chain	Residues	Atoms					ZeroOcc	AltConf
			Total	C	N	O	P		
2	A	1	Total 28	C 9	N 3	O 13	P 3	0	0
2	B	1	Total 28	C 9	N 3	O 13	P 3	0	0

*Continued on next page...*

*Continued from previous page...*

Mol	Chain	Residues	Atoms					ZeroOcc	AltConf
2	C	1	Total	C	N	O	P	0	0
			28	9	3	13	3		
2	D	1	Total	C	N	O	P	0	0
			28	9	3	13	3		

- Molecule 3 is water.

Mol	Chain	Residues	Atoms		ZeroOcc	AltConf
3	A	127	Total	O	0	0
			127	127		
3	B	121	Total	O	0	0
			121	121		
3	C	106	Total	O	0	0
			106	106		
3	D	105	Total	O	0	0
			105	105		



N210  
LEU  
GLU  
ASN  
ILE  
GLY  
THR  
GLU  
TYR  
GLN  
ARG  
SER  
GLU  
SER  
SER  
ILE  
PHE  
ASP  
ALA  
ILE  
SER

## 4 Data and refinement statistics

Property	Value	Source
Space group	P 1 21 1	Depositor
Cell constants a, b, c, $\alpha$ , $\beta$ , $\gamma$	67.86Å 119.03Å 70.51Å 90.00° 96.38° 90.00°	Depositor
Resolution (Å)	50.00 – 2.20 42.99 – 2.20	Depositor EDS
% Data completeness (in resolution range)	99.3 (50.00-2.20) 99.4 (42.99-2.20)	Depositor EDS
$R_{merge}$	0.07	Depositor
$R_{sym}$	(Not available)	Depositor
$\langle I/\sigma(I) \rangle$ <sup>1</sup>	2.58 (at 2.20Å)	Xtrriage
Refinement program	REFMAC 5.2.0019	Depositor
R, $R_{free}$	0.195 , 0.249 0.194 , 0.246	Depositor DCC
$R_{free}$ test set	2846 reflections (5.08%)	wwPDB-VP
Wilson B-factor (Å <sup>2</sup> )	32.4	Xtrriage
Anisotropy	0.207	Xtrriage
Bulk solvent $k_{sol}$ (e/Å <sup>3</sup> ), $B_{sol}$ (Å <sup>2</sup> )	0.39 , 47.4	EDS
L-test for twinning <sup>2</sup>	$\langle  L  \rangle = 0.49$ , $\langle L^2 \rangle = 0.31$	Xtrriage
Estimated twinning fraction	0.000 for l,-k,h	Xtrriage
$F_o, F_c$ correlation	0.95	EDS
Total number of atoms	7163	wwPDB-VP
Average B, all atoms (Å <sup>2</sup> )	31.0	wwPDB-VP

Xtrriage's analysis on translational NCS is as follows: *The analyses of the Patterson function reveals a significant off-origin peak that is 61.52 % of the origin peak, indicating pseudo-translational symmetry. The chance of finding a peak of this or larger height randomly in a structure without pseudo-translational symmetry is equal to 1.2936e-05. The detected translational NCS is most likely also responsible for the elevated intensity ratio.*

<sup>1</sup>Intensities estimated from amplitudes.

<sup>2</sup>Theoretical values of  $\langle |L| \rangle$ ,  $\langle L^2 \rangle$  for acentric reflections are 0.5, 0.333 respectively for untwinned datasets, and 0.375, 0.2 for perfectly twinned datasets.

## 5 Model quality [i](#)

### 5.1 Standard geometry [i](#)

Bond lengths and bond angles in the following residue types are not validated in this section: DCP

The Z score for a bond length (or angle) is the number of standard deviations the observed value is removed from the expected value. A bond length (or angle) with  $|Z| > 5$  is considered an outlier worth inspection. RMSZ is the root-mean-square of all Z scores of the bond lengths (or angles).

Mol	Chain	Bond lengths		Bond angles	
		RMSZ	# $ Z  > 5$	RMSZ	# $ Z  > 5$
1	A	0.63	1/1686 (0.1%)	0.68	2/2279 (0.1%)
1	B	0.59	0/1686	0.63	0/2279
1	C	0.57	0/1678	0.64	0/2268
1	D	0.53	0/1694	0.63	1/2290 (0.0%)
All	All	0.58	1/6744 (0.0%)	0.65	3/9116 (0.0%)

Chiral center outliers are detected by calculating the chiral volume of a chiral center and verifying if the center is modelled as a planar moiety or with the opposite hand. A planarity outlier is detected by checking planarity of atoms in a peptide group, atoms in a mainchain group or atoms of a sidechain that are expected to be planar.

Mol	Chain	#Chirality outliers	#Planarity outliers
1	A	0	1

All (1) bond length outliers are listed below:

Mol	Chain	Res	Type	Atoms	Z	Observed(Å)	Ideal(Å)
1	A	209	LEU	CG-CD1	-7.43	1.24	1.51

All (3) bond angle outliers are listed below:

Mol	Chain	Res	Type	Atoms	Z	Observed(°)	Ideal(°)
1	A	209	LEU	CB-CG-CD1	5.98	121.17	111.00
1	D	209	LEU	CA-CB-CG	5.78	128.60	115.30
1	A	52	GLU	N-CA-C	-5.42	96.36	111.00

There are no chirality outliers.

All (1) planarity outliers are listed below:



Mol	Chain	Res	Type	Group
1	A	51	THR	Peptide

## 5.2 Too-close contacts

In the following table, the Non-H and H(model) columns list the number of non-hydrogen atoms and hydrogen atoms in the chain respectively. The H(added) column lists the number of hydrogen atoms added and optimized by MolProbity. The Clashes column lists the number of clashes within the asymmetric unit, whereas Symm-Clashes lists symmetry-related clashes.

Mol	Chain	Non-H	H(model)	H(added)	Clashes	Symm-Clashes
1	A	1648	0	1640	17	0
1	B	1648	0	1640	21	0
1	C	1640	0	1629	22	0
1	D	1656	0	1646	21	0
2	A	28	0	12	1	0
2	B	28	0	12	2	0
2	C	28	0	12	1	0
2	D	28	0	12	1	0
3	A	127	0	0	3	0
3	B	121	0	0	5	0
3	C	106	0	0	5	0
3	D	105	0	0	3	0
All	All	7163	0	6603	75	0

The all-atom clashscore is defined as the number of clashes found per 1000 atoms (including hydrogen atoms). The all-atom clashscore for this structure is 6.

All (75) close contacts within the same asymmetric unit are listed below, sorted by their clash magnitude.

Atom-1	Atom-2	Interatomic distance (Å)	Clash overlap (Å)
1:C:198:GLN:HA	1:C:199:SER:HB3	1.20	1.13
1:C:198:GLN:HA	1:C:199:SER:CB	1.84	1.06
1:C:198:GLN:CA	1:C:199:SER:HB3	2.02	0.88
1:C:125:GLU:HG2	3:C:2032:HOH:O	1.88	0.72
1:C:73:PRO:HB2	1:C:123:SER:HB3	1.72	0.71
1:A:81:GLN:HE22	2:A:1210:DCP:HN41	1.38	0.69
1:C:164:ILE:HD12	1:C:180:LEU:HD11	1.75	0.69
1:A:125:GLU:HG2	3:A:2039:HOH:O	1.94	0.67
1:A:164:ILE:HD12	1:A:180:LEU:HD11	1.77	0.67
1:A:112:TYR:CG	1:A:196:ARG:HG2	2.31	0.65
1:B:41:GLU:OE1	1:D:193:HIS:HD2	1.83	0.61

*Continued on next page...*

*Continued from previous page...*

Atom-1	Atom-2	Interatomic distance (Å)	Clash overlap (Å)
1:D:37:LEU:HD21	1:D:102:ILE:HG22	1.82	0.61
1:A:112:TYR:CD1	1:A:196:ARG:HG2	2.38	0.59
1:A:208:ASP:O	1:A:209:LEU:HB2	2.02	0.59
1:D:190:TRP:HE1	1:D:198:GLN:HE21	1.49	0.59
1:B:81:GLN:HE22	2:B:1210:DCP:HN41	1.49	0.58
1:D:81:GLN:HE22	2:D:1211:DCP:HN41	1.51	0.57
1:B:162:GLU:HG3	1:B:166:GLN:HE21	1.69	0.57
1:C:162:GLU:O	1:C:166:GLN:HG3	2.04	0.56
1:C:117:ASN:HB3	3:C:2090:HOH:O	2.05	0.56
1:D:89:LEU:HD13	1:D:107:ILE:HD12	1.87	0.56
1:D:121:ASN:C	1:D:121:ASN:HD22	2.10	0.55
1:B:121:ASN:C	1:B:121:ASN:HD22	2.09	0.55
1:A:37:LEU:HD13	1:A:51:THR:HG22	1.87	0.55
1:A:121:ASN:HD22	1:A:121:ASN:C	2.10	0.55
1:B:44:LYS:HG3	1:D:194:GLN:OE1	2.07	0.54
1:B:165:ARG:HD3	3:B:2088:HOH:O	2.07	0.53
1:B:121:ASN:HD22	1:B:123:SER:H	1.56	0.53
1:D:67:GLU:O	1:D:71:LYS:HG3	2.09	0.52
1:C:81:GLN:HE22	2:C:1209:DCP:HN41	1.57	0.52
1:C:197:PRO:O	1:C:199:SER:HB3	2.09	0.52
1:B:37:LEU:CD1	1:B:104:GLU:HB2	2.40	0.51
1:A:126:GLN:HE22	1:D:126:GLN:HE22	1.59	0.51
1:B:89:LEU:HD13	1:B:107:ILE:HD12	1.93	0.50
1:C:56:LYS:HE2	3:C:2039:HOH:O	2.11	0.50
1:B:44:LYS:HG3	1:D:194:GLN:CD	2.32	0.49
1:C:121:ASN:C	1:C:121:ASN:HD22	2.15	0.49
1:C:165:ARG:NH2	1:C:173:SER:O	2.45	0.49
1:A:193:HIS:C	1:A:194:GLN:HG2	2.32	0.49
1:D:165:ARG:CZ	3:D:2077:HOH:O	2.60	0.49
1:B:121:ASN:ND2	1:B:123:SER:H	2.10	0.49
1:A:126:GLN:HE22	1:D:126:GLN:NE2	2.11	0.48
1:B:37:LEU:HD21	1:B:102:ILE:HG22	1.95	0.48
1:D:121:ASN:HD22	1:D:123:SER:H	1.61	0.47
1:B:39:HIS:HE1	3:B:2013:HOH:O	1.97	0.47
1:A:78:MET:HG3	1:A:128:MET:HG2	1.96	0.47
1:C:37:LEU:HD13	1:C:51:THR:HG22	1.98	0.46
1:D:121:ASN:ND2	1:D:123:SER:H	2.13	0.45
1:C:30:GLY:O	1:C:163:ARG:HD2	2.17	0.45
1:D:112:TYR:CD1	1:D:196:ARG:HG3	2.51	0.45
1:C:120:ARG:NH2	3:C:2056:HOH:O	2.51	0.44
1:D:54:VAL:HA	1:D:57:TRP:CE3	2.53	0.44

*Continued on next page...*

Continued from previous page...

Atom-1	Atom-2	Interatomic distance (Å)	Clash overlap (Å)
1:D:196:ARG:HA	1:D:196:ARG:HD3	1.80	0.44
1:A:112:TYR:CD2	1:A:196:ARG:HG2	2.53	0.44
1:A:117:ASN:HB3	3:A:2106:HOH:O	2.16	0.44
1:B:12:THR:N	3:B:2002:HOH:O	2.51	0.43
1:B:178:LYS:HG2	3:B:2101:HOH:O	2.18	0.43
1:B:112:TYR:CD2	1:B:196:ARG:HD3	2.53	0.43
1:C:121:ASN:ND2	1:C:123:SER:OG	2.51	0.43
1:C:60:VAL:HG21	1:C:65:LEU:HG	2.01	0.43
1:D:53:PRO:HB2	1:D:57:TRP:CZ2	2.53	0.43
1:B:37:LEU:HD12	1:B:104:GLU:HB2	2.01	0.42
1:C:121:ASN:HD22	1:C:122:GLY:N	2.17	0.42
1:C:197:PRO:HG2	3:C:2052:HOH:O	2.19	0.42
1:B:167:ARG:NH1	2:B:1210:DCP:O3G	2.53	0.42
1:B:197:PRO:HG2	3:B:2055:HOH:O	2.19	0.42
1:A:94:ALA:HA	1:A:95:PRO:HD3	1.93	0.42
1:B:37:LEU:HD21	1:B:102:ILE:CG2	2.49	0.41
1:D:117:ASN:HB3	3:D:2084:HOH:O	2.19	0.41
1:B:61:ASN:O	1:D:126:GLN:NE2	2.44	0.41
1:C:49:LEU:HD23	1:C:102:ILE:HB	2.02	0.41
1:D:165:ARG:NH2	3:D:2077:HOH:O	2.54	0.41
1:A:194:GLN:HA	3:A:2117:HOH:O	2.20	0.40
1:A:190:TRP:HE1	1:A:198:GLN:HE21	1.69	0.40
1:C:47:ILE:CG2	1:C:102:ILE:HG13	2.51	0.40

There are no symmetry-related clashes.

## 5.3 Torsion angles [i](#)

### 5.3.1 Protein backbone [i](#)

In the following table, the Percentiles column shows the percent Ramachandran outliers of the chain as a percentile score with respect to all X-ray entries followed by that with respect to entries of similar resolution.

The Analysed column shows the number of residues for which the backbone conformation was analysed, and the total number of residues.

Mol	Chain	Analysed	Favoured	Allowed	Outliers	Percentiles	
1	A	196/230 (85%)	191 (97%)	5 (3%)	0	100	100
1	B	196/230 (85%)	192 (98%)	4 (2%)	0	100	100

Continued on next page...

*Continued from previous page...*

Mol	Chain	Analysed	Favoured	Allowed	Outliers	Percentiles	
1	C	195/230 (85%)	189 (97%)	5 (3%)	1 (0%)	29	31
1	D	197/230 (86%)	190 (96%)	7 (4%)	0	100	100
All	All	784/920 (85%)	762 (97%)	21 (3%)	1 (0%)	51	60

All (1) Ramachandran outliers are listed below:

Mol	Chain	Res	Type
1	C	199	SER

### 5.3.2 Protein sidechains [i](#)

In the following table, the Percentiles column shows the percent sidechain outliers of the chain as a percentile score with respect to all X-ray entries followed by that with respect to entries of similar resolution.

The Analysed column shows the number of residues for which the sidechain conformation was analysed, and the total number of residues.

Mol	Chain	Analysed	Rotameric	Outliers	Percentiles	
1	A	183/208 (88%)	173 (94%)	10 (6%)	21	26
1	B	183/208 (88%)	176 (96%)	7 (4%)	33	42
1	C	182/208 (88%)	175 (96%)	7 (4%)	33	42
1	D	184/208 (88%)	176 (96%)	8 (4%)	29	36
All	All	732/832 (88%)	700 (96%)	32 (4%)	28	35

All (32) residues with a non-rotameric sidechain are listed below:

Mol	Chain	Res	Type
1	A	12	THR
1	A	37	LEU
1	A	78	MET
1	A	89	LEU
1	A	121	ASN
1	A	162	GLU
1	A	194	GLN
1	A	196	ARG
1	A	205	LEU
1	A	209	LEU
1	B	42	LYS

*Continued on next page...*

*Continued from previous page...*

Mol	Chain	Res	Type
1	B	44	LYS
1	B	89	LEU
1	B	121	ASN
1	B	125	GLU
1	B	126	GLN
1	B	198	GLN
1	C	44	LYS
1	C	89	LEU
1	C	121	ASN
1	C	162	GLU
1	C	198	GLN
1	C	199	SER
1	C	200	CYS
1	D	78	MET
1	D	89	LEU
1	D	121	ASN
1	D	165	ARG
1	D	195	ARG
1	D	198	GLN
1	D	209	LEU
1	D	210	ASN

Sometimes sidechains can be flipped to improve hydrogen bonding and reduce clashes. All (17) such sidechains are listed below:

Mol	Chain	Res	Type
1	A	81	GLN
1	A	121	ASN
1	A	126	GLN
1	A	198	GLN
1	B	81	GLN
1	B	90	GLN
1	B	121	ASN
1	B	166	GLN
1	B	198	GLN
1	C	81	GLN
1	C	121	ASN
1	D	81	GLN
1	D	90	GLN
1	D	121	ASN
1	D	193	HIS
1	D	198	GLN
1	D	210	ASN

### 5.3.3 RNA [i](#)

There are no RNA molecules in this entry.

## 5.4 Non-standard residues in protein, DNA, RNA chains [i](#)

There are no non-standard protein/DNA/RNA residues in this entry.

## 5.5 Carbohydrates [i](#)

There are no monosaccharides in this entry.

## 5.6 Ligand geometry [i](#)

4 ligands are modelled in this entry.

In the following table, the Counts columns list the number of bonds (or angles) for which Mogul statistics could be retrieved, the number of bonds (or angles) that are observed in the model and the number of bonds (or angles) that are defined in the Chemical Component Dictionary. The Link column lists molecule types, if any, to which the group is linked. The Z score for a bond length (or angle) is the number of standard deviations the observed value is removed from the expected value. A bond length (or angle) with  $|Z| > 2$  is considered an outlier worth inspection. RMSZ is the root-mean-square of all Z scores of the bond lengths (or angles).

Mol	Type	Chain	Res	Link	Bond lengths			Bond angles		
					Counts	RMSZ	# Z  > 2	Counts	RMSZ	# Z  > 2
2	DCP	C	1209	-	25,29,29	0.74	0	37,45,45	0.95	2 (5%)
2	DCP	A	1210	-	25,29,29	0.91	1 (4%)	37,45,45	1.08	1 (2%)
2	DCP	D	1211	-	25,29,29	0.77	1 (4%)	37,45,45	0.96	2 (5%)
2	DCP	B	1210	-	25,29,29	0.83	1 (4%)	37,45,45	1.16	4 (10%)

In the following table, the Chirals column lists the number of chiral outliers, the number of chiral centers analysed, the number of these observed in the model and the number defined in the Chemical Component Dictionary. Similar counts are reported in the Torsion and Rings columns. '-' means no outliers of that kind were identified.

Mol	Type	Chain	Res	Link	Chirals	Torsions	Rings
2	DCP	C	1209	-	-	2/22/34/34	0/2/2/2
2	DCP	A	1210	-	-	2/22/34/34	0/2/2/2
2	DCP	D	1211	-	-	3/22/34/34	0/2/2/2
2	DCP	B	1210	-	-	1/22/34/34	0/2/2/2

All (3) bond length outliers are listed below:

Mol	Chain	Res	Type	Atoms	Z	Observed(Å)	Ideal(Å)
2	B	1210	DCP	C6-C5	2.85	1.41	1.35
2	D	1211	DCP	C6-C5	2.22	1.40	1.35
2	A	1210	DCP	C6-C5	2.13	1.40	1.35

All (9) bond angle outliers are listed below:

Mol	Chain	Res	Type	Atoms	Z	Observed(°)	Ideal(°)
2	A	1210	DCP	C2'-C1'-N1	3.21	121.17	113.77
2	D	1211	DCP	C2'-C1'-N1	2.46	119.43	113.77
2	B	1210	DCP	O3G-PG-O2G	2.21	116.07	107.64
2	C	1209	DCP	O3G-PG-O2G	2.19	116.02	107.64
2	B	1210	DCP	PB-O3B-PG	-2.13	125.51	132.83
2	B	1210	DCP	O4'-C1'-N1	-2.12	104.07	107.86
2	B	1210	DCP	O2B-PB-O1B	2.11	122.68	112.24
2	C	1209	DCP	PB-O3A-PA	-2.08	125.70	132.83
2	D	1211	DCP	PB-O3A-PA	-2.02	125.90	132.83

There are no chirality outliers.

All (8) torsion outliers are listed below:

Mol	Chain	Res	Type	Atoms
2	C	1209	DCP	C5'-O5'-PA-O1A
2	A	1210	DCP	C3'-C4'-C5'-O5'
2	C	1209	DCP	C5'-O5'-PA-O3A
2	A	1210	DCP	O4'-C4'-C5'-O5'
2	D	1211	DCP	C3'-C4'-C5'-O5'
2	D	1211	DCP	O4'-C4'-C5'-O5'
2	B	1210	DCP	C5'-O5'-PA-O1A
2	D	1211	DCP	C5'-O5'-PA-O1A

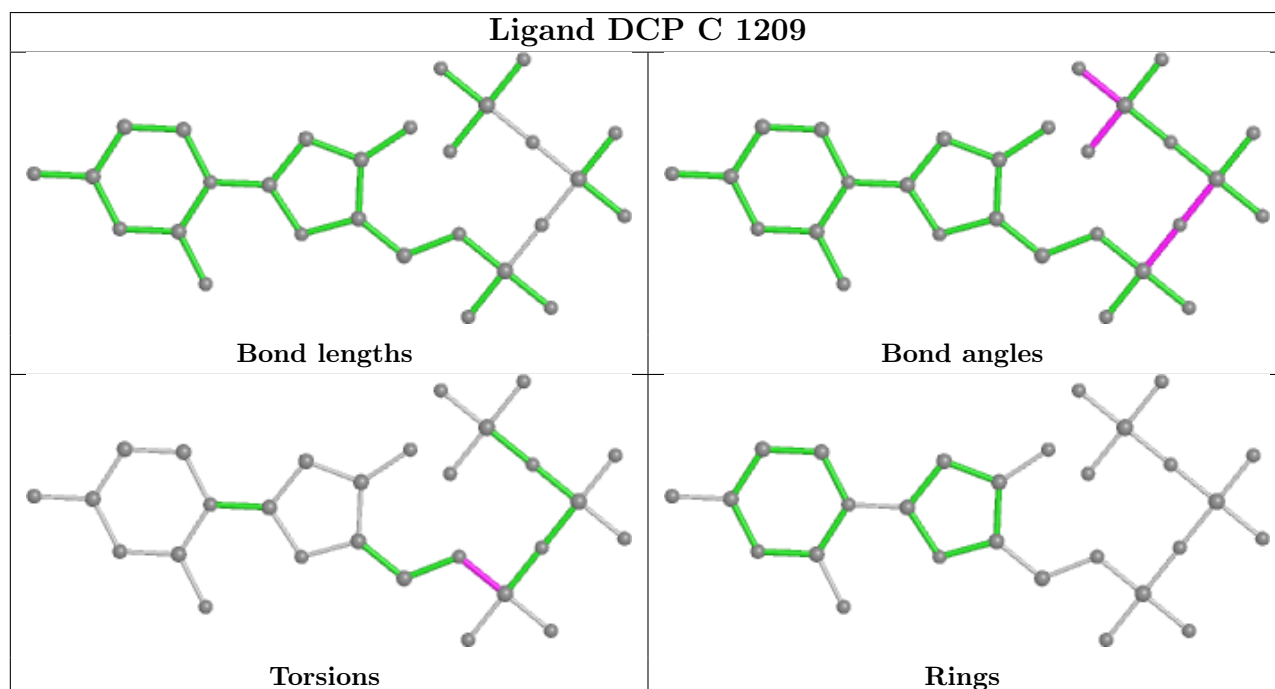
There are no ring outliers.

4 monomers are involved in 5 short contacts:

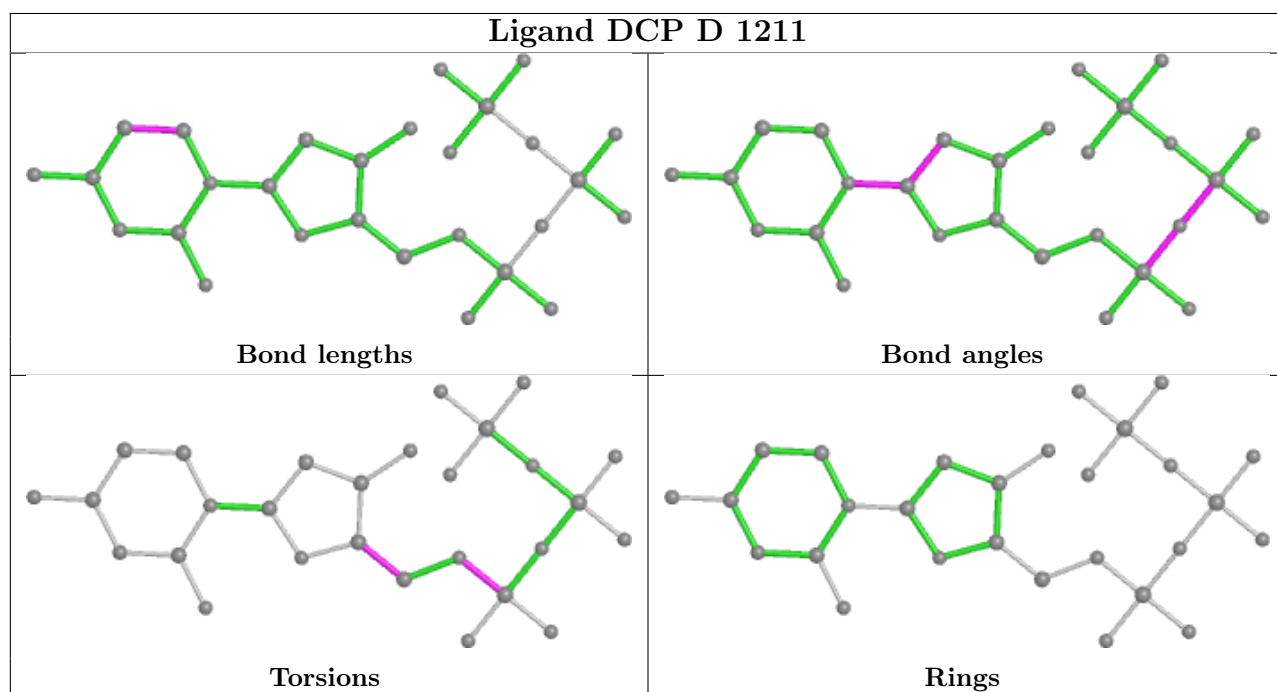
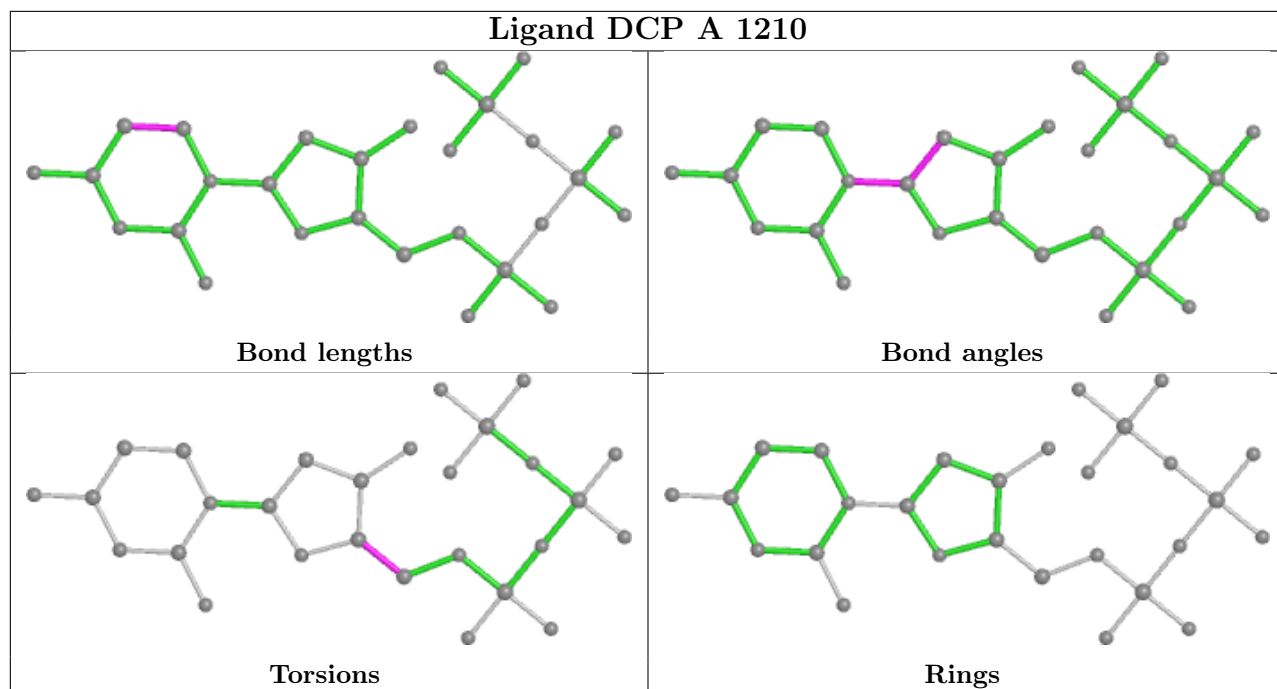
Mol	Chain	Res	Type	Clashes	Symm-Clashes
2	C	1209	DCP	1	0
2	A	1210	DCP	1	0
2	D	1211	DCP	1	0
2	B	1210	DCP	2	0

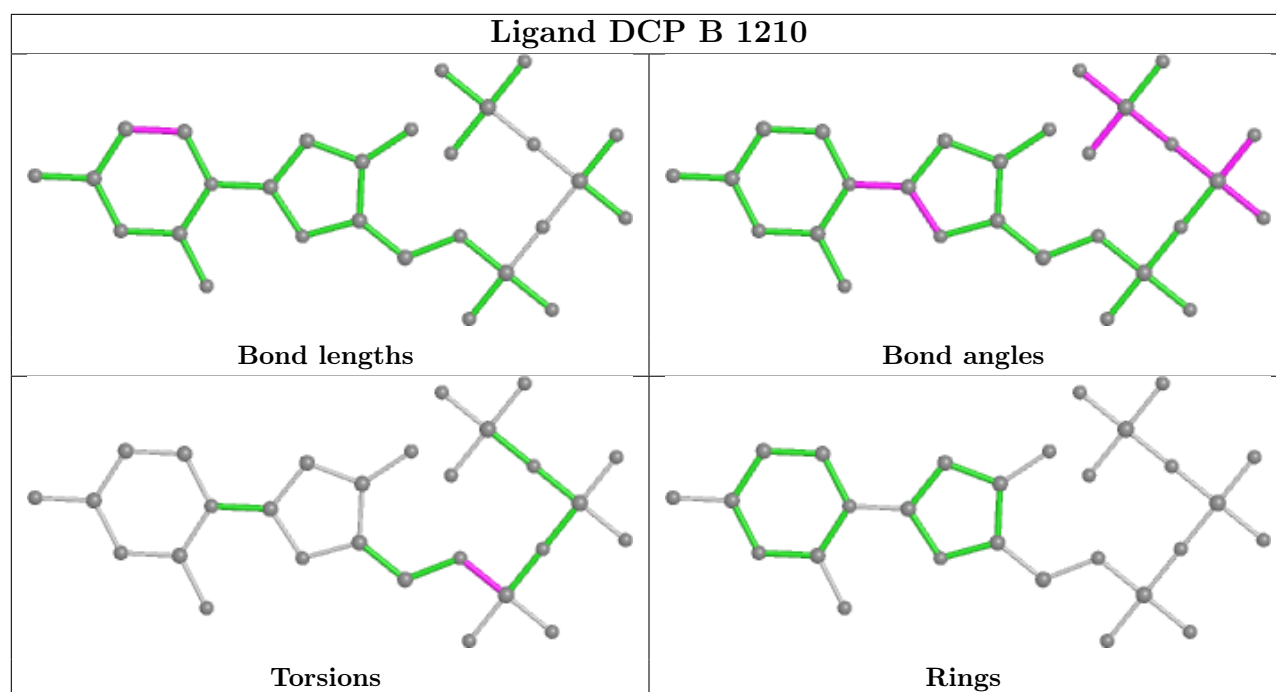
The following is a two-dimensional graphical depiction of Mogul quality analysis of bond lengths,

bond angles, torsion angles, and ring geometry for all instances of the Ligand of Interest. In addition, ligands with molecular weight  $> 250$  and outliers as shown on the validation Tables will also be included. For torsion angles, if less than 5% of the Mogul distribution of torsion angles is within 10 degrees of the torsion angle in question, then that torsion angle is considered an outlier. Any bond that is central to one or more torsion angles identified as an outlier by Mogul will be highlighted in the graph. For rings, the root-mean-square deviation (RMSD) between the ring in question and similar rings identified by Mogul is calculated over all ring torsion angles. If the average RMSD is greater than 60 degrees and the minimal RMSD between the ring in question and any Mogul-identified rings is also greater than 60 degrees, then that ring is considered an outlier. The outliers are highlighted in purple. The color gray indicates Mogul did not find sufficient equivalents in the CSD to analyse the geometry.









## 5.7 Other polymers [i](#)

There are no such residues in this entry.

## 5.8 Polymer linkage issues [i](#)

There are no chain breaks in this entry.

## 6 Fit of model and data [i](#)

### 6.1 Protein, DNA and RNA chains [i](#)

In the following table, the column labelled ‘#RSRZ > 2’ contains the number (and percentage) of RSRZ outliers, followed by percent RSRZ outliers for the chain as percentile scores relative to all X-ray entries and entries of similar resolution. The OWAB column contains the minimum, median, 95<sup>th</sup> percentile and maximum values of the occupancy-weighted average B-factor per residue. The column labelled ‘Q < 0.9’ lists the number of (and percentage) of residues with an average occupancy less than 0.9.

Mol	Chain	Analysed	<RSRZ>	#RSRZ>2	OWAB(Å <sup>2</sup> )	Q<0.9
1	A	198/230 (86%)	-0.16	4 (2%) 65 63	17, 28, 44, 52	0
1	B	198/230 (86%)	-0.16	2 (1%) 82 81	17, 28, 45, 51	0
1	C	197/230 (85%)	-0.06	2 (1%) 82 81	19, 32, 48, 54	0
1	D	199/230 (86%)	-0.01	5 (2%) 57 55	21, 32, 50, 65	0
All	All	792/920 (86%)	-0.10	13 (1%) 72 70	17, 30, 47, 65	0

All (13) RSRZ outliers are listed below:

Mol	Chain	Res	Type	RSRZ
1	D	17	GLY	5.0
1	D	209	LEU	3.4
1	D	210	ASN	3.2
1	B	12	THR	3.1
1	A	97	ASN	2.9
1	C	199	SER	2.9
1	D	97	ASN	2.8
1	B	17	GLY	2.8
1	A	99	LYS	2.2
1	D	12	THR	2.2
1	A	131	THR	2.1
1	A	12	THR	2.0
1	C	12	THR	2.0

### 6.2 Non-standard residues in protein, DNA, RNA chains [i](#)

There are no non-standard protein/DNA/RNA residues in this entry.

### 6.3 Carbohydrates [i](#)

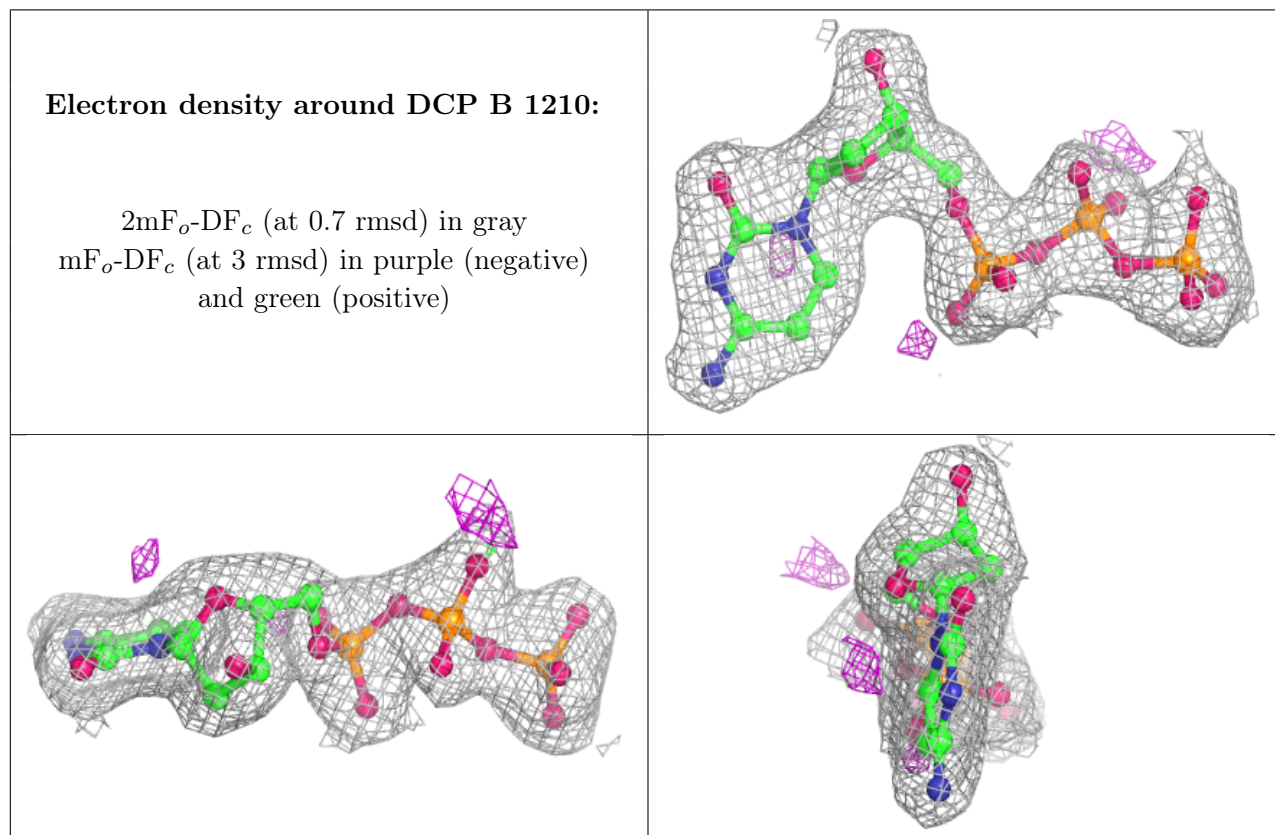
There are no monosaccharides in this entry.

### 6.4 Ligands [i](#)

In the following table, the Atoms column lists the number of modelled atoms in the group and the number defined in the chemical component dictionary. The B-factors column lists the minimum, median, 95<sup>th</sup> percentile and maximum values of B factors of atoms in the group. The column labelled 'Q< 0.9' lists the number of atoms with occupancy less than 0.9.

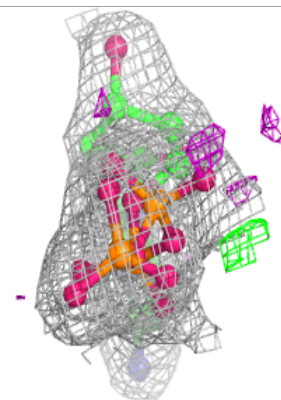
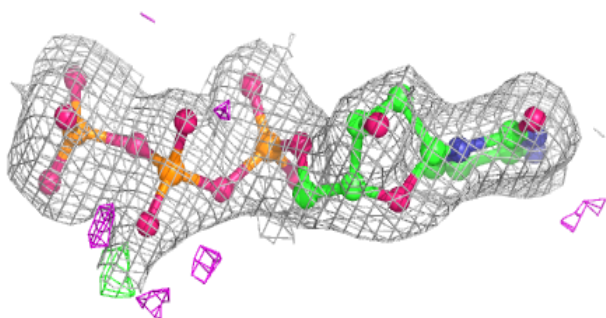
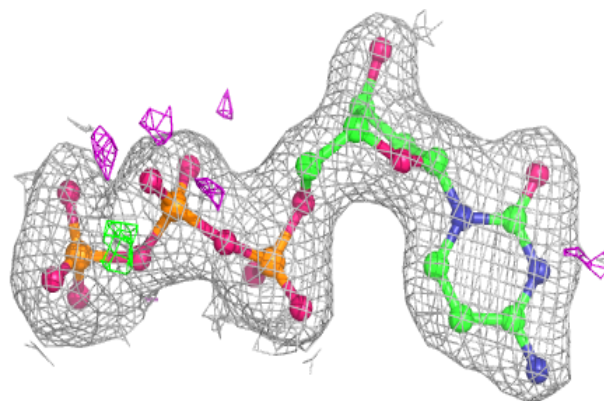
Mol	Type	Chain	Res	Atoms	RSCC	RSR	B-factors(Å <sup>2</sup> )	Q<0.9
2	DCP	B	1210	28/28	0.98	0.11	13,22,27,30	0
2	DCP	C	1209	28/28	0.98	0.10	20,26,30,30	0
2	DCP	D	1211	28/28	0.98	0.09	17,23,35,39	0
2	DCP	A	1210	28/28	0.99	0.10	18,22,28,32	0

The following is a graphical depiction of the model fit to experimental electron density of all instances of the Ligand of Interest. In addition, ligands with molecular weight > 250 and outliers as shown on the geometry validation Tables will also be included. Each fit is shown from different orientation to approximate a three-dimensional view.

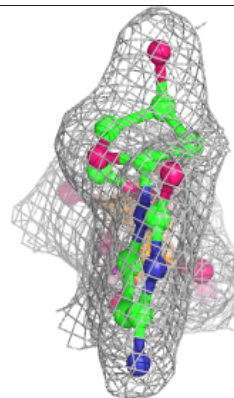
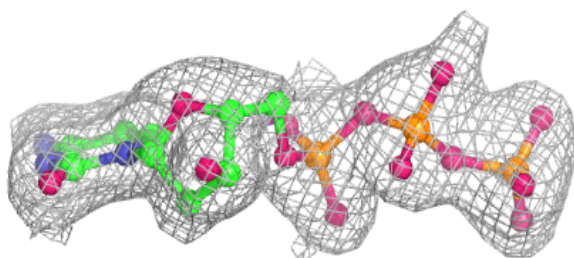
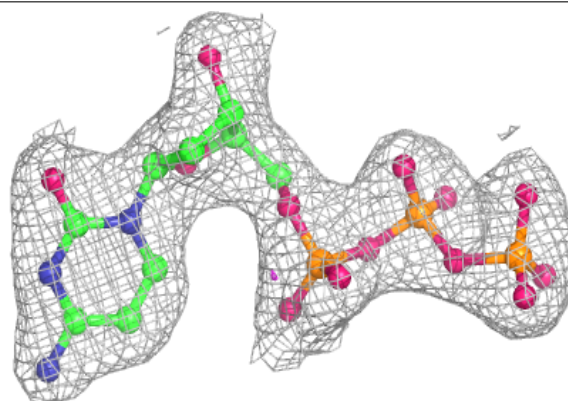


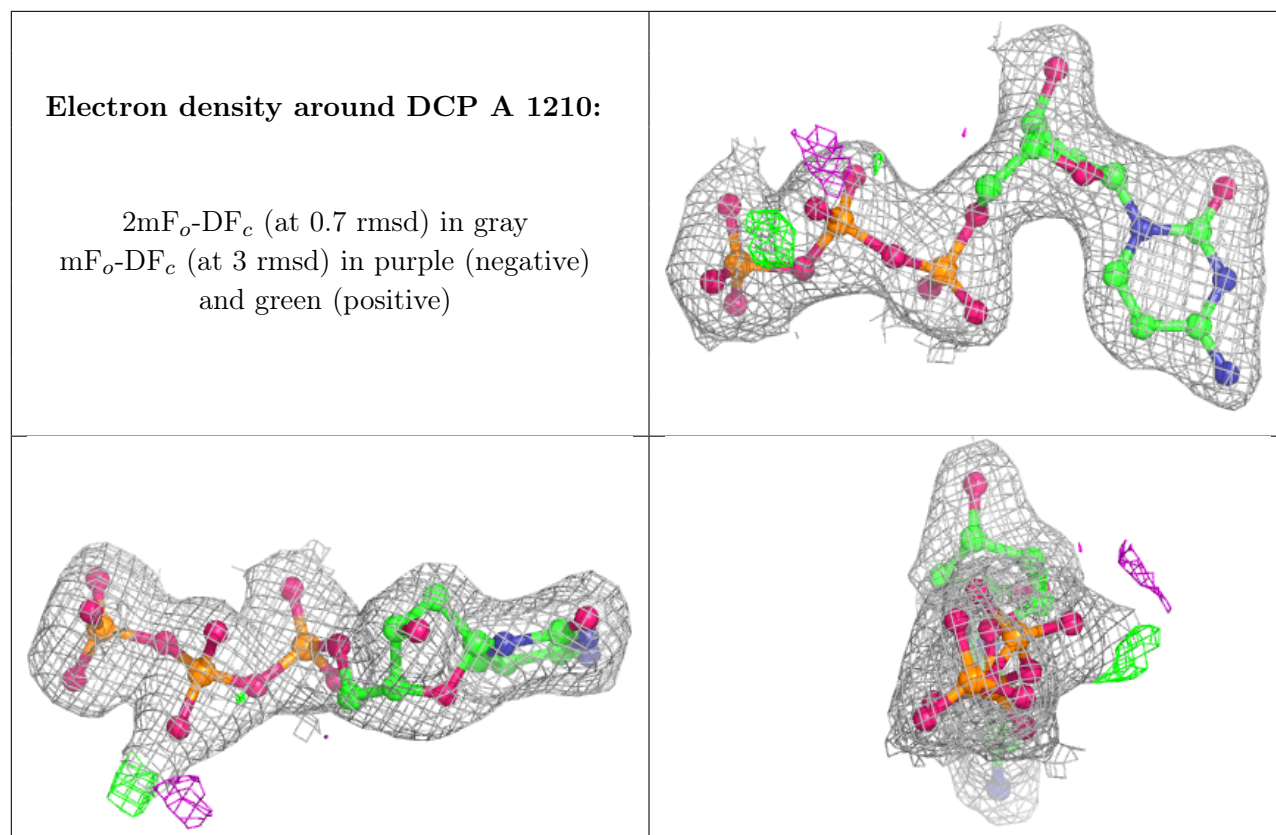
**Electron density around DCP C 1209:**

$2mF_o-DF_c$  (at 0.7 rmsd) in gray  
 $mF_o-DF_c$  (at 3 rmsd) in purple (negative)  
and green (positive)

**Electron density around DCP D 1211:**

$2mF_o-DF_c$  (at 0.7 rmsd) in gray  
 $mF_o-DF_c$  (at 3 rmsd) in purple (negative)  
and green (positive)





## 6.5 Other polymers [i](#)

There are no such residues in this entry.