



# Full wwPDB X-ray Structure Validation Report ⓘ

Aug 19, 2024 – 02:03 PM EDT

PDB ID : 8VMG  
Title : Crystal structure of GSK-3 26-383 bound to Axin 383-435  
Authors : Enos, M.D.; Gavagan, M.; Jameson, N.; Zalatan, J.G.; Weis, W.I.  
Deposited on : 2024-01-13  
Resolution : 2.45 Å(reported)

This is a Full wwPDB X-ray Structure Validation Report for a publicly released PDB entry.

We welcome your comments at [validation@mail.wwpdb.org](mailto:validation@mail.wwpdb.org)

A user guide is available at

<https://www.wwpdb.org/validation/2017/XrayValidationReportHelp>

with specific help available everywhere you see the ⓘ symbol.

The types of validation reports are described at

<http://www.wwpdb.org/validation/2017/FAQs#types>.

---

The following versions of software and data (see [references ⓘ](#)) were used in the production of this report:

MolProbity : 4.02b-467  
Mogul : 1.8.5 (274361), CSD as541be (2020)  
Xtriage (Phenix) : 1.13  
EDS : 2.37.1  
buster-report : 1.1.7 (2018)  
Percentile statistics : 20191225.v01 (using entries in the PDB archive December 25th 2019)  
Refmac : 5.8.0158  
CCP4 : 7.0.044 (Gargrove)  
Ideal geometry (proteins) : Engh & Huber (2001)  
Ideal geometry (DNA, RNA) : Parkinson et al. (1996)  
Validation Pipeline (wwPDB-VP) : 2.37.1

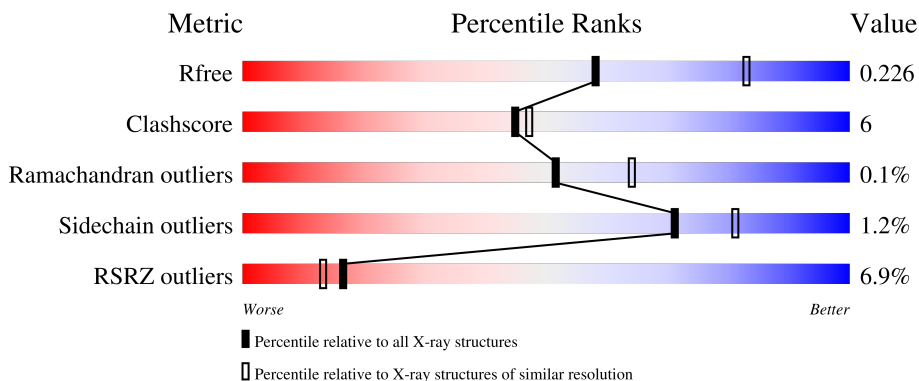
# 1 Overall quality at a glance i

The following experimental techniques were used to determine the structure:

*X-RAY DIFFRACTION*

The reported resolution of this entry is 2.45 Å.

Percentile scores (ranging between 0-100) for global validation metrics of the entry are shown in the following graphic. The table shows the number of entries on which the scores are based.



Metric	Whole archive (#Entries)	Similar resolution (#Entries, resolution range(Å))
$R_{free}$	130704	1544 (2.48-2.44)
Clashscore	141614	1613 (2.48-2.44)
Ramachandran outliers	138981	1598 (2.48-2.44)
Sidechain outliers	138945	1598 (2.48-2.44)
RSRZ outliers	127900	1523 (2.48-2.44)

The table below summarises the geometric issues observed across the polymeric chains and their fit to the electron density. The red, orange, yellow and green segments of the lower bar indicate the fraction of residues that contain outliers for  $\geq 3$ , 2, 1 and 0 types of geometric quality criteria respectively. A grey segment represents the fraction of residues that are not modelled. The numeric value for each fraction is indicated below the corresponding segment, with a dot representing fractions  $\leq 5\%$ . The upper red bar (where present) indicates the fraction of residues that have poor fit to the electron density. The numeric value is given above the bar.

Mol	Chain	Length	Quality of chain
1	A	364	 3% 82% 16%
1	B	364	 6% 83% 13%
2	C	60	 5% 52% 7% 42%
2	D	60	 33% 40% 15% 43%

The following table lists non-polymeric compounds, carbohydrate monomers and non-standard

residues in protein, DNA, RNA chains that are outliers for geometric or electron-density-fit criteria:

Mol	Type	Chain	Res	Chirality	Geometry	Clashes	Electron density
4	EDO	A	421	-	-	-	X
4	EDO	A	422	-	-	-	X
4	EDO	A	423	-	-	-	X
4	EDO	B	411	-	-	-	X
4	EDO	B	416	-	-	-	X
5	NO3	A	420	-	-	-	X
6	GOL	A	425	-	-	-	X

## 2 Entry composition [i](#)

There are 11 unique types of molecules in this entry. The entry contains 6951 atoms, of which 279 are hydrogens and 0 are deuteriums.

In the tables below, the ZeroOcc column contains the number of atoms modelled with zero occupancy, the AltConf column contains the number of residues with at least one atom in alternate conformation and the Trace column contains the number of residues modelled with at most 2 atoms.

- Molecule 1 is a protein called Glycogen synthase kinase-3 beta.

Mol	Chain	Residues	Atoms					ZeroOcc	AltConf	Trace
			Total	C	N	O	S			
1	A	359	2895	1865	493	525	12	0	8	0
1	B	350	2774	1789	466	507	12	0	6	0

There are 12 discrepancies between the modelled and reference sequences:

Chain	Residue	Modelled	Actual	Comment	Reference
A	384	HIS	-	expression tag	UNP Q9WV60
A	385	HIS	-	expression tag	UNP Q9WV60
A	386	HIS	-	expression tag	UNP Q9WV60
A	387	HIS	-	expression tag	UNP Q9WV60
A	388	HIS	-	expression tag	UNP Q9WV60
A	389	HIS	-	expression tag	UNP Q9WV60
B	384	HIS	-	expression tag	UNP Q9WV60
B	385	HIS	-	expression tag	UNP Q9WV60
B	386	HIS	-	expression tag	UNP Q9WV60
B	387	HIS	-	expression tag	UNP Q9WV60
B	388	HIS	-	expression tag	UNP Q9WV60
B	389	HIS	-	expression tag	UNP Q9WV60

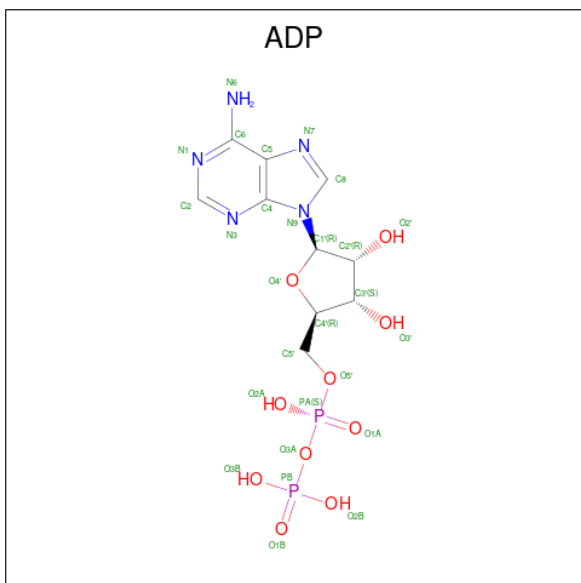
- Molecule 2 is a protein called Axin-1.

Mol	Chain	Residues	Atoms				ZeroOcc	AltConf	Trace
			Total	C	N	O			
2	C	35	288	179	53	56	0	1	0
2	D	34	245	149	47	49	0	0	0

There are 14 discrepancies between the modelled and reference sequences:

Chain	Residue	Modelled	Actual	Comment	Reference
C	376	GLY	-	expression tag	UNP O15169
C	377	GLY	-	expression tag	UNP O15169
C	378	TRP	-	expression tag	UNP O15169
C	379	GLY	-	expression tag	UNP O15169
C	380	SER	-	expression tag	UNP O15169
C	381	GLY	-	expression tag	UNP O15169
C	382	GLY	-	expression tag	UNP O15169
D	376	GLY	-	expression tag	UNP O15169
D	377	GLY	-	expression tag	UNP O15169
D	378	TRP	-	expression tag	UNP O15169
D	379	GLY	-	expression tag	UNP O15169
D	380	SER	-	expression tag	UNP O15169
D	381	GLY	-	expression tag	UNP O15169
D	382	GLY	-	expression tag	UNP O15169

- Molecule 3 is ADENOSINE-5'-DIPHOSPHATE (three-letter code: ADP) (formula:  $C_{10}H_{15}N_5O_{10}P_2$ ).



Mol	Chain	Residues	Atoms				ZeroOcc	AltConf	
			Total	C	N	O			P
3	A	1	27	10	5	10	2	0	0

- Molecule 4 is 1,2-ETHANEDIOL (three-letter code: EDO) (formula:  $C_2H_6O_2$ ).



Mol	Chain	Residues	Atoms			ZeroOcc	AltConf	
4	A	1	Total	C	H	O	0	0
			10	2	6	2		
4	A	1	Total	C	H	O	0	0
			10	2	6	2		
4	A	1	Total	C	H	O	0	0
			10	2	6	2		
4	A	1	Total	C	H	O	0	0
			10	2	6	2		
4	A	1	Total	C	H	O	0	0
			10	2	6	2		
4	A	1	Total	C	H	O	0	0
			10	2	6	2		
4	A	1	Total	C	H	O	0	0
			10	2	6	2		
4	A	1	Total	C	H	O	0	0
			10	2	6	2		
4	A	1	Total	C	H	O	0	0
			10	2	6	2		
4	A	1	Total	C	H	O	0	0
			10	2	6	2		

Continued on next page...

*Continued from previous page...*

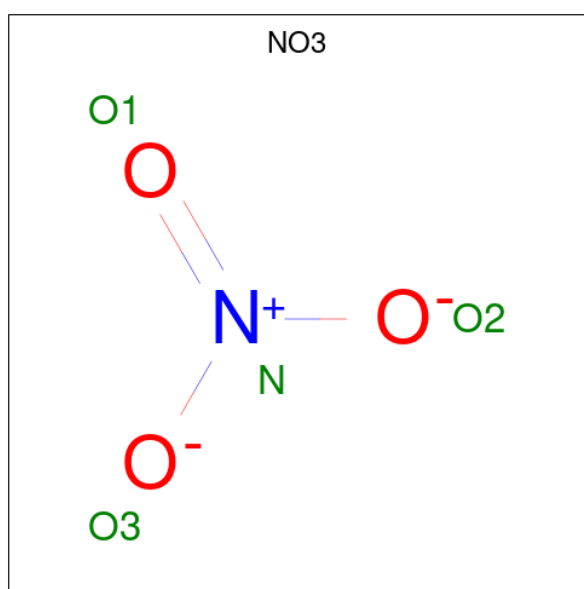
Mol	Chain	Residues	Atoms				ZeroOcc	AltConf
			Total	C	H	O		
4	A	1	Total	C	H	O	0	0
			10	2	6	2		
4	A	1	Total	C	H	O	0	0
			10	2	6	2		
4	B	1	Total	C	H	O	0	0
			10	2	6	2		
4	B	1	Total	C	H	O	0	0
			10	2	6	2		
4	B	1	Total	C	H	O	0	0
			10	2	6	2		
4	B	1	Total	C	H	O	0	0
			10	2	6	2		
4	B	1	Total	C	H	O	0	0
			10	2	6	2		
4	B	1	Total	C	H	O	0	0
			10	2	6	2		
4	B	1	Total	C	H	O	0	0
			10	2	6	2		
4	B	1	Total	C	H	O	0	0
			10	2	6	2		
4	B	1	Total	C	H	O	0	0
			10	2	6	2		
4	B	1	Total	C	H	O	0	0
			10	2	6	2		
4	B	1	Total	C	H	O	0	0
			10	2	6	2		
4	B	1	Total	C	H	O	0	0
			10	2	6	2		
4	B	1	Total	C	H	O	0	0
			10	2	6	2		
4	B	1	Total	C	H	O	0	0
			10	2	6	2		
4	B	1	Total	C	H	O	0	0
			10	2	6	2		
4	B	1	Total	C	H	O	0	0
			10	2	6	2		
4	B	1	Total	C	H	O	0	0
			10	2	6	2		

*Continued on next page...*

Continued from previous page...

Mol	Chain	Residues	Atoms				ZeroOcc	AltConf
4	C	1	Total	C	H	O	0	0
			10	2	6	2		
4	C	1	Total	C	H	O	0	0
			10	2	6	2		
4	C	1	Total	C	H	O	0	0
			10	2	6	2		
4	C	1	Total	C	H	O	0	0
			10	2	6	2		

- Molecule 5 is NITRATE ION (three-letter code: NO3) (formula: NO<sub>3</sub>).



Mol	Chain	Residues	Atoms			ZeroOcc	AltConf
5	A	1	Total	N	O	0	0
			4	1	3		
5	A	1	Total	N	O	0	0
			4	1	3		
5	A	1	Total	N	O	0	0
			4	1	3		
5	A	1	Total	N	O	0	0
			4	1	3		
5	A	1	Total	N	O	0	0
			4	1	3		
5	A	1	Total	N	O	0	0
			4	1	3		

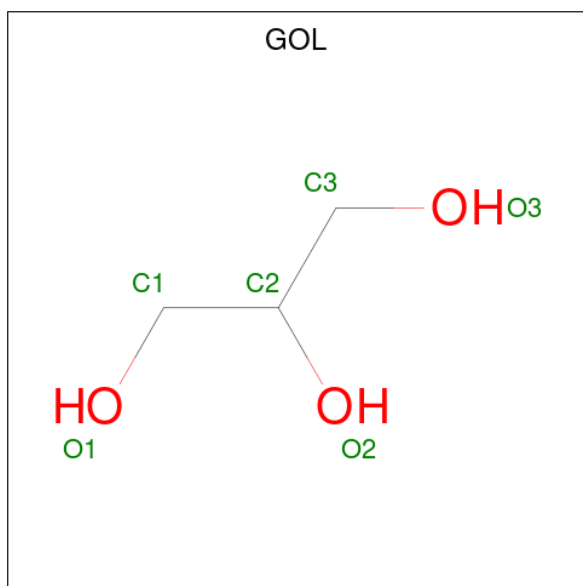
Continued on next page...



Continued from previous page...

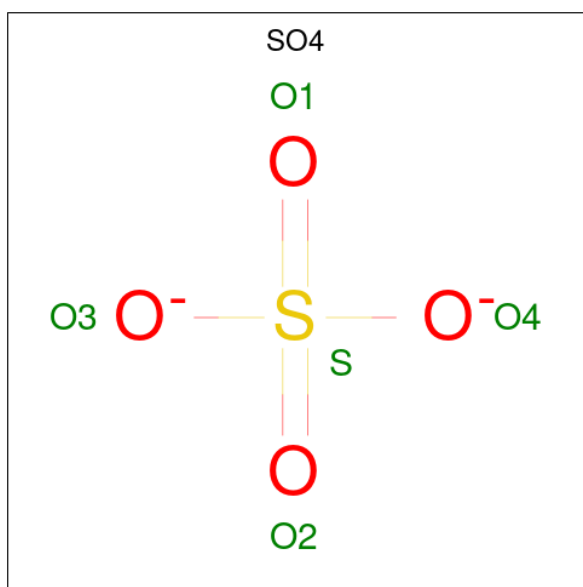
Mol	Chain	Residues	Atoms			ZeroOcc	AltConf
			Total	N	O		
5	A	1	4	1	3	0	0

- Molecule 6 is GLYCEROL (three-letter code: GOL) (formula:  $C_3H_8O_3$ ).



Mol	Chain	Residues	Atoms				ZeroOcc	AltConf
			Total	C	H	O		
6	A	1	14	3	8	3	0	0
6	A	1	14	3	8	3	0	0
6	A	1	14	3	8	3	0	0
6	A	1	14	3	8	3	0	0

- Molecule 7 is SULFATE ION (three-letter code: SO4) (formula:  $O_4S$ ).



Mol	Chain	Residues	Atoms	ZeroOcc	AltConf
7	A	1	Total O S 5 4 1	0	0
7	A	1	Total O S 5 4 1	0	0
7	A	1	Total O S 5 4 1	0	0
7	A	1	Total O S 5 4 1	0	0
7	A	1	Total O S 5 4 1	0	0
7	A	1	Total O S 5 4 1	0	0
7	B	1	Total O S 5 4 1	0	0
7	B	1	Total O S 5 4 1	0	0
7	C	1	Total O S 5 4 1	0	0

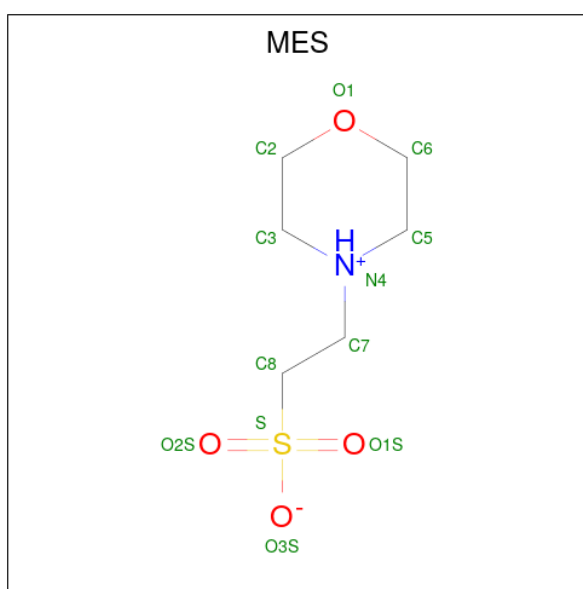
- Molecule 8 is MAGNESIUM ION (three-letter code: MG) (formula: Mg).

Mol	Chain	Residues	Atoms	ZeroOcc	AltConf
8	A	1	Total Mg 1 1	0	0

- Molecule 9 is CHLORIDE ION (three-letter code: CL) (formula: Cl).

Mol	Chain	Residues	Atoms	ZeroOcc	AltConf
9	A	5	Total Cl 5 5	0	0
9	B	7	Total Cl 7 7	0	0
9	C	2	Total Cl 2 2	0	0
9	D	1	Total Cl 1 1	0	0

- Molecule 10 is 2-(N-MORPHOLINO)-ETHANESULFONIC ACID (three-letter code: MES) (formula: C<sub>6</sub>H<sub>13</sub>NO<sub>4</sub>S).



Mol	Chain	Residues	Atoms	ZeroOcc	AltConf
10	B	1	Total C H N O S 25 6 13 1 4 1	0	1

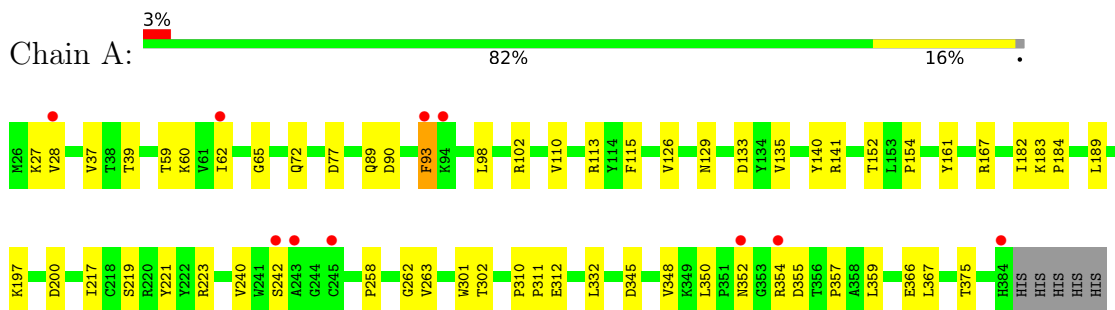
- Molecule 11 is water.

Mol	Chain	Residues	Atoms	ZeroOcc	AltConf
11	A	96	Total O 96 96	0	0
11	B	51	Total O 51 51	0	0
11	C	10	Total O 10 10	0	0
11	D	1	Total O 1 1	0	0

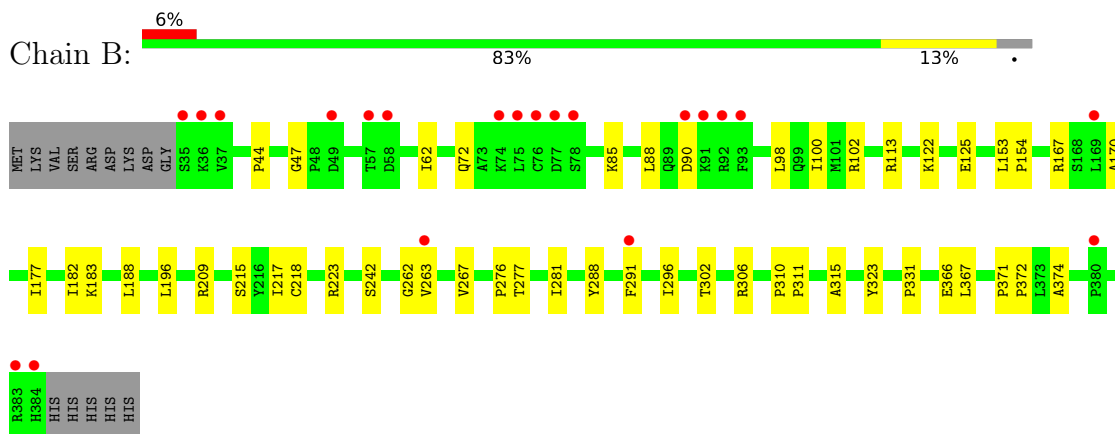
### 3 Residue-property plots [i](#)

These plots are drawn for all protein, RNA, DNA and oligosaccharide chains in the entry. The first graphic for a chain summarises the proportions of the various outlier classes displayed in the second graphic. The second graphic shows the sequence view annotated by issues in geometry and electron density. Residues are color-coded according to the number of geometric quality criteria for which they contain at least one outlier: green = 0, yellow = 1, orange = 2 and red = 3 or more. A red dot above a residue indicates a poor fit to the electron density ( $RSRZ > 2$ ). Stretches of 2 or more consecutive residues without any outlier are shown as a green connector. Residues present in the sample, but not in the model, are shown in grey.

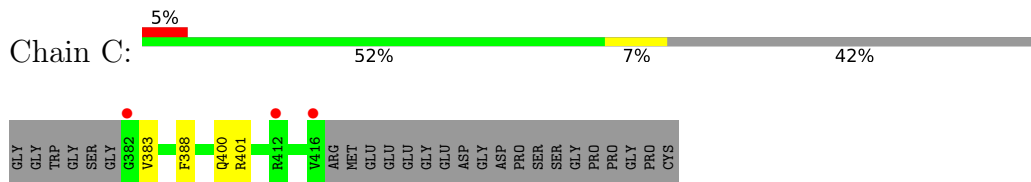
- Molecule 1: Glycogen synthase kinase-3 beta



- Molecule 1: Glycogen synthase kinase-3 beta

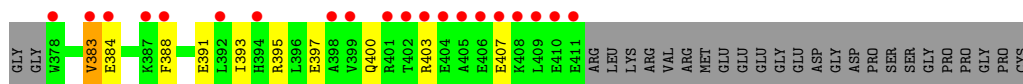


- Molecule 2: Axin-1



- Molecule 2: Axin-1





## 4 Data and refinement statistics

Property	Value	Source
Space group	P 65 2 2	Depositor
Cell constants a, b, c, $\alpha$ , $\beta$ , $\gamma$	195.59Å 195.59Å 152.20Å 90.00° 90.00° 120.00°	Depositor
Resolution (Å)	39.76 – 2.45 39.76 – 2.45	Depositor EDS
% Data completeness (in resolution range)	99.9 (39.76-2.45) 88.6 (39.76-2.45)	Depositor EDS
$R_{merge}$	0.22	Depositor
$R_{sym}$	(Not available)	Depositor
$\langle I/\sigma(I) \rangle$ <sup>1</sup>	0.54 (at 2.45Å)	Xtrriage
Refinement program	PHENIX 1.20.1_4487	Depositor
R, $R_{free}$	0.195 , 0.230 0.190 , 0.226	Depositor DCC
$R_{free}$ test set	2000 reflections (3.16%)	wwPDB-VP
Wilson B-factor (Å <sup>2</sup> )	57.5	Xtrriage
Anisotropy	0.253	Xtrriage
Bulk solvent $k_{sol}$ (e/Å <sup>3</sup> ), $B_{sol}$ (Å <sup>2</sup> )	0.33 , 55.3	EDS
L-test for twinning <sup>2</sup>	$\langle  L  \rangle = 0.50$ , $\langle L^2 \rangle = 0.33$	Xtrriage
Estimated twinning fraction	No twinning to report.	Xtrriage
$F_o, F_c$ correlation	0.96	EDS
Total number of atoms	6951	wwPDB-VP
Average B, all atoms (Å <sup>2</sup> )	81.0	wwPDB-VP

Xtrriage's analysis on translational NCS is as follows: *The largest off-origin peak in the Patterson function is 2.97% of the height of the origin peak. No significant pseudotranslation is detected.*

<sup>1</sup>Intensities estimated from amplitudes.

<sup>2</sup>Theoretical values of  $\langle |L| \rangle$ ,  $\langle L^2 \rangle$  for acentric reflections are 0.5, 0.333 respectively for untwinned datasets, and 0.375, 0.2 for perfectly twinned datasets.

## 5 Model quality [i](#)

### 5.1 Standard geometry [i](#)

Bond lengths and bond angles in the following residue types are not validated in this section: CL, SO4, MES, NO3, MG, GOL, ADP, EDO

The Z score for a bond length (or angle) is the number of standard deviations the observed value is removed from the expected value. A bond length (or angle) with  $|Z| > 5$  is considered an outlier worth inspection. RMSZ is the root-mean-square of all Z scores of the bond lengths (or angles).

Mol	Chain	Bond lengths		Bond angles	
		RMSZ	# Z  >5	RMSZ	# Z  >5
1	A	0.38	0/2988	0.59	0/4066
1	B	0.35	0/2863	0.54	0/3909
2	C	0.38	0/293	0.55	0/392
2	D	0.28	0/247	0.48	0/333
All	All	0.36	0/6391	0.56	0/8700

There are no bond length outliers.

There are no bond angle outliers.

There are no chirality outliers.

There are no planarity outliers.

### 5.2 Too-close contacts [i](#)

In the following table, the Non-H and H(model) columns list the number of non-hydrogen atoms and hydrogen atoms in the chain respectively. The H(added) column lists the number of hydrogen atoms added and optimized by MolProbity. The Clashes column lists the number of clashes within the asymmetric unit, whereas Symm-Clashes lists symmetry-related clashes.

Mol	Chain	Non-H	H(model)	H(added)	Clashes	Symm-Clashes
1	A	2895	0	2920	48	0
1	B	2774	0	2753	32	0
2	C	288	0	283	5	0
2	D	245	0	211	9	0
3	A	27	0	12	1	0
4	A	64	96	96	6	0
4	B	76	114	114	1	0
4	C	16	24	24	1	0
5	A	32	0	0	1	0

*Continued on next page...*

Continued from previous page...

Mol	Chain	Non-H	H(model)	H(added)	Clashes	Symm-Clashes
6	A	24	32	32	4	0
7	A	30	0	0	0	0
7	B	10	0	0	0	0
7	C	5	0	0	0	0
8	A	1	0	0	0	0
9	A	5	0	0	0	0
9	B	7	0	0	0	0
9	C	2	0	0	0	0
9	D	1	0	0	0	0
10	B	12	13	12	2	0
11	A	96	0	0	3	0
11	B	51	0	0	3	0
11	C	10	0	0	1	0
11	D	1	0	0	0	0
All	All	6672	279	6457	84	0

The all-atom clashscore is defined as the number of clashes found per 1000 atoms (including hydrogen atoms). The all-atom clashscore for this structure is 6.

All (84) close contacts within the same asymmetric unit are listed below, sorted by their clash magnitude.

Atom-1	Atom-2	Interatomic distance (Å)	Clash overlap (Å)
1:A:89:GLN:HB2	1:A:126[A]:VAL:HG13	1.65	0.78
1:A:375:THR:HB	1:B:372:PRO:HB3	1.69	0.75
1:A:263[B]:VAL:HG12	2:C:388:PHE:HE1	1.56	0.69
1:A:140:TYR:HB2	1:A:184:PRO:HB2	1.75	0.69
1:A:113:ARG:NE	1:A:133:ASP:OD1	2.24	0.68
10:B:401[B]:MES:O2S	11:B:501:HOH:O	2.12	0.67
1:A:90:ASP:HB3	1:A:93:PHE:HB2	1.77	0.65
1:A:350:LEU:HD12	1:A:354:ARG:HG3	1.78	0.65
1:B:218:CYS:O	1:B:223:ARG:NH1	2.32	0.63
1:B:113:ARG:NH1	11:B:502:HOH:O	2.30	0.62
1:A:200:ASP:HB2	3:A:401:ADP:O1A	2.00	0.62
1:B:167:ARG:NE	1:B:366:GLU:OE2	2.32	0.61
1:A:152:THR:HG22	11:A:577:HOH:O	2.01	0.60
1:A:98:LEU:O	1:A:102:ARG:HG3	2.03	0.59
1:B:153:LEU:HD12	1:B:154:PRO:HD2	1.83	0.58
1:B:367:LEU:HD13	1:B:374:ALA:HB2	1.86	0.58
1:B:217:ILE:O	1:B:223:ARG:HD3	2.03	0.57
1:A:263[B]:VAL:HG12	2:C:388:PHE:CE1	2.38	0.57
1:B:62[A]:ILE:HD12	1:B:72:GLN:HB2	1.85	0.57

Continued on next page...



*Continued from previous page...*

Atom-1	Atom-2	Interatomic distance (Å)	Clash overlap (Å)
1:A:110:VAL:HA	4:A:426:EDO:H21	1.87	0.57
1:A:133:ASP:OD2	4:A:426:EDO:O2	2.21	0.56
1:A:352:ASN:OD1	1:A:354:ARG:HG2	2.08	0.54
2:D:393:ILE:O	2:D:397:GLU:HG3	2.08	0.54
1:A:77:ASP:HB2	6:A:419:GOL:O2	2.08	0.52
1:B:85:LYS:HD2	10:B:401[B]:MES:O3S	2.09	0.52
1:B:98:LEU:O	1:B:102:ARG:HG3	2.10	0.51
1:B:47:GLY:N	11:B:504:HOH:O	2.44	0.50
1:A:263[A]:VAL:HG23	6:A:425:GOL:C1	2.42	0.50
1:A:302:THR:HB	1:B:302:THR:HB	1.94	0.50
1:B:262:GLY:HA3	4:B:420:EDO:H12	1.94	0.50
1:A:262:GLY:H	6:A:425:GOL:H32	1.77	0.50
1:A:263[A]:VAL:HG22	2:C:388:PHE:HE1	1.78	0.49
1:A:240:VAL:HG21	4:A:421:EDO:H21	1.95	0.49
1:A:126[A]:VAL:HG12	11:A:534:HOH:O	2.13	0.49
2:D:403:ARG:O	2:D:407:GLU:HG3	2.13	0.48
1:B:44:PRO:HA	1:B:113:ARG:O	2.13	0.48
1:A:263[B]:VAL:HG13	6:A:425:GOL:C1	2.44	0.48
1:B:263:VAL:HG22	2:D:388:PHE:CE1	2.48	0.48
1:A:312:GLU:HG2	1:B:315:ALA:HB1	1.95	0.47
1:A:167:ARG:HG3	1:A:366:GLU:OE2	2.14	0.47
1:A:135:VAL:HG21	1:A:197:LYS:HD2	1.95	0.47
1:A:62[A]:ILE:HG13	1:A:72:GLN:HB2	1.95	0.47
1:A:357:PRO:O	1:A:359:LEU:HG	2.15	0.46
2:C:401:ARG:NH2	11:C:601:HOH:O	2.48	0.46
1:A:28:VAL:HA	1:A:37:VAL:O	2.15	0.46
2:D:391:GLU:O	2:D:395:ARG:HG3	2.16	0.46
1:A:27:LYS:HG3	1:A:39:THR:HB	1.98	0.46
1:B:263:VAL:O	1:B:267:VAL:HG23	2.15	0.46
1:B:296:ILE:CD1	2:D:400:GLN:HG3	2.46	0.46
1:A:65:GLY:HA3	5:A:429:NO3:O2	2.16	0.46
1:A:141:ARG:HD3	4:A:405:EDO:O2	2.17	0.45
2:C:400:GLN:HG2	4:C:501:EDO:O1	2.17	0.45
1:A:182:ILE:HB	1:A:242:SER:HB2	1.98	0.45
1:B:100:ILE:HG23	1:B:177:ILE:HD13	1.99	0.44
1:B:276:PRO:HB3	1:B:323:TYR:CD2	2.52	0.44
1:B:277:THR:O	1:B:281:ILE:HG13	2.17	0.44
1:A:332:LEU:HD21	1:A:367:LEU:HA	2.00	0.44
1:A:182:ILE:HB	1:A:242:SER:CB	2.48	0.44
1:A:345:ASP:O	1:A:348:VAL:HG12	2.17	0.43
1:B:310:PRO:HA	1:B:311:PRO:HD3	1.88	0.43

*Continued on next page...*

Continued from previous page...

Atom-1	Atom-2	Interatomic distance (Å)	Clash overlap (Å)
1:B:371:PRO:HB2	1:B:372:PRO:HD3	1.99	0.43
1:A:59:THR:HA	1:A:72:GLN:O	2.19	0.43
1:A:161:TYR:CZ	1:A:189:LEU:HD21	2.54	0.43
1:A:183:LYS:HE3	1:A:219[B]:SER:OG	2.19	0.43
1:A:332:LEU:HD12	1:A:332:LEU:HA	1.86	0.42
1:A:161:TYR:CE1	1:A:189:LEU:HD11	2.54	0.42
1:A:60:LYS:HE3	1:A:62[A]:ILE:HD11	2.00	0.42
1:B:170:ALA:HB2	1:B:331:PRO:HB2	2.00	0.42
1:A:217:ILE:O	1:A:223:ARG:HD3	2.20	0.42
1:A:355:ASP:HB2	11:A:531:HOH:O	2.19	0.42
1:B:182:ILE:HB	1:B:242:SER:HB2	2.01	0.42
1:A:115:PHE:HA	1:A:129:ASN:O	2.20	0.41
1:A:310:PRO:HA	1:A:311:PRO:HD3	1.86	0.41
1:A:301:TRP:H	4:A:417:EDO:H11	1.85	0.41
1:A:154:PRO:HB3	4:A:411:EDO:H12	2.03	0.41
1:B:188:LEU:O	1:B:196:LEU:HA	2.19	0.41
1:B:217:ILE:HG13	1:B:218:CYS:H	1.85	0.41
1:A:221:TYR:CE1	1:A:258:PRO:HA	2.55	0.41
1:B:288:TYR:HA	1:B:291:PHE:CD2	2.56	0.41
1:B:263:VAL:CG1	2:D:395:ARG:HD2	2.51	0.41
1:B:263:VAL:HG12	2:D:395:ARG:HD2	2.03	0.41
2:D:383:VAL:HG13	2:D:384:GLU:O	2.20	0.40
1:B:122:LYS:HB2	1:B:125:GLU:OE1	2.22	0.40
1:B:263:VAL:HG22	2:D:388:PHE:HE1	1.86	0.40

There are no symmetry-related clashes.

## 5.3 Torsion angles [i](#)

### 5.3.1 Protein backbone [i](#)

In the following table, the Percentiles column shows the percent Ramachandran outliers of the chain as a percentile score with respect to all X-ray entries followed by that with respect to entries of similar resolution.

The Analysed column shows the number of residues for which the backbone conformation was analysed, and the total number of residues.

Mol	Chain	Analysed	Favoured	Allowed	Outliers	Percentiles
1	A	365/364 (100%)	359 (98%)	6 (2%)	0	<a href="#">100</a> <a href="#">100</a>

Continued on next page...

Continued from previous page...

Mol	Chain	Analysed	Favoured	Allowed	Outliers	Percentiles	
1	B	354/364 (97%)	345 (98%)	9 (2%)	0	100	100
2	C	34/60 (57%)	33 (97%)	0	1 (3%)	4	2
2	D	32/60 (53%)	32 (100%)	0	0	100	100
All	All	785/848 (93%)	769 (98%)	15 (2%)	1 (0%)	51	64

All (1) Ramachandran outliers are listed below:

Mol	Chain	Res	Type
2	C	383	VAL

### 5.3.2 Protein sidechains [i](#)

In the following table, the Percentiles column shows the percent sidechain outliers of the chain as a percentile score with respect to all X-ray entries followed by that with respect to entries of similar resolution.

The Analysed column shows the number of residues for which the sidechain conformation was analysed, and the total number of residues.

Mol	Chain	Analysed	Rotameric	Outliers	Percentiles	
1	A	322/325 (99%)	321 (100%)	1 (0%)	92	95
1	B	304/325 (94%)	298 (98%)	6 (2%)	55	67
2	C	29/48 (60%)	29 (100%)	0	100	100
2	D	20/48 (42%)	19 (95%)	1 (5%)	24	32
All	All	675/746 (90%)	667 (99%)	8 (1%)	71	81

All (8) residues with a non-rotameric sidechain are listed below:

Mol	Chain	Res	Type
1	A	93	PHE
1	B	88	LEU
1	B	90	ASP
1	B	183	LYS
1	B	209	ARG
1	B	215	SER
1	B	306	ARG
2	D	383	VAL

Sometimes sidechains can be flipped to improve hydrogen bonding and reduce clashes. There are

no such sidechains identified.

### 5.3.3 RNA [i](#)

There are no RNA molecules in this entry.

## 5.4 Non-standard residues in protein, DNA, RNA chains [i](#)

There are no non-standard protein/DNA/RNA residues in this entry.

### 5.5 Carbohydrates [i](#)

There are no monosaccharides in this entry.

### 5.6 Ligand geometry [i](#)

Of 78 ligands modelled in this entry, 16 are monoatomic - leaving 62 for Mogul analysis.

In the following table, the Counts columns list the number of bonds (or angles) for which Mogul statistics could be retrieved, the number of bonds (or angles) that are observed in the model and the number of bonds (or angles) that are defined in the Chemical Component Dictionary. The Link column lists molecule types, if any, to which the group is linked. The Z score for a bond length (or angle) is the number of standard deviations the observed value is removed from the expected value. A bond length (or angle) with  $|Z| > 2$  is considered an outlier worth inspection. RMSZ is the root-mean-square of all Z scores of the bond lengths (or angles).

Mol	Type	Chain	Res	Link	Bond lengths			Bond angles		
					Counts	RMSZ	# Z  > 2	Counts	RMSZ	# Z  > 2
4	EDO	C	504	-	3,3,3	0.46	0	2,2,2	0.30	0
4	EDO	B	410	-	3,3,3	0.57	0	2,2,2	0.12	0
5	NO3	A	407	-	1,3,3	0.78	0	0,3,3	-	-
7	SO4	A	434	-	4,4,4	0.24	0	6,6,6	0.34	0
3	ADP	A	401	8	24,29,29	0.90	1 (4%)	29,45,45	1.28	4 (13%)
5	NO3	A	408	-	1,3,3	0.74	0	0,3,3	-	-
4	EDO	B	404	-	3,3,3	0.48	0	2,2,2	0.18	0
7	SO4	B	421	-	4,4,4	0.18	0	6,6,6	0.92	0
4	EDO	B	402	-	3,3,3	0.47	0	2,2,2	0.23	0
4	EDO	B	419	-	3,3,3	0.42	0	2,2,2	0.55	0
7	SO4	A	435	-	4,4,4	0.10	0	6,6,6	0.30	0
4	EDO	B	417	-	3,3,3	0.43	0	2,2,2	0.38	0
6	GOL	A	414	-	5,5,5	0.84	0	5,5,5	0.98	0
4	EDO	B	413	-	3,3,3	0.52	0	2,2,2	0.11	0
4	EDO	B	415	-	3,3,3	0.47	0	2,2,2	0.30	0

Mol	Type	Chain	Res	Link	Bond lengths			Bond angles		
					Counts	RMSZ	# Z  > 2	Counts	RMSZ	# Z  > 2
4	EDO	A	424	-	3,3,3	0.46	0	2,2,2	0.34	0
4	EDO	B	405	-	3,3,3	0.55	0	2,2,2	0.08	0
4	EDO	B	406	-	3,3,3	0.46	0	2,2,2	0.34	0
4	EDO	A	421	-	3,3,3	0.54	0	2,2,2	0.17	0
7	SO4	A	430	-	4,4,4	0.14	0	6,6,6	0.28	0
4	EDO	B	403	-	3,3,3	0.47	0	2,2,2	0.26	0
6	GOL	A	410	-	5,5,5	0.80	0	5,5,5	1.28	1 (20%)
4	EDO	B	412	-	3,3,3	0.47	0	2,2,2	0.33	0
4	EDO	A	416	-	3,3,3	0.52	0	2,2,2	0.11	0
4	EDO	A	418	-	3,3,3	0.51	0	2,2,2	0.08	0
4	EDO	B	409	-	3,3,3	0.47	0	2,2,2	0.19	0
4	EDO	C	501	-	3,3,3	0.44	0	2,2,2	0.40	0
7	SO4	A	432	-	4,4,4	0.20	0	6,6,6	0.19	0
6	GOL	A	425	-	5,5,5	0.86	0	5,5,5	1.03	0
6	GOL	A	419	-	5,5,5	1.06	0	5,5,5	1.19	1 (20%)
4	EDO	B	411	-	3,3,3	0.57	0	2,2,2	0.24	0
4	EDO	C	502	-	3,3,3	0.49	0	2,2,2	0.15	0
7	SO4	C	505	-	4,4,4	0.14	0	6,6,6	0.27	0
5	NO3	A	420	-	1,3,3	0.72	0	0,3,3	-	-
4	EDO	C	503	-	3,3,3	0.58	0	2,2,2	0.41	0
4	EDO	B	420	-	3,3,3	0.47	0	2,2,2	0.46	0
5	NO3	A	429	-	1,3,3	0.79	0	0,3,3	-	-
4	EDO	A	402	-	3,3,3	0.47	0	2,2,2	0.23	0
4	EDO	A	404	-	3,3,3	0.48	0	2,2,2	0.15	0
4	EDO	A	417	-	3,3,3	0.54	0	2,2,2	0.09	0
4	EDO	B	418	-	3,3,3	0.42	0	2,2,2	0.46	0
5	NO3	A	409	-	1,3,3	0.73	0	0,3,3	-	-
5	NO3	A	428	-	1,3,3	0.78	0	0,3,3	-	-
4	EDO	A	423	-	3,3,3	0.53	0	2,2,2	0.08	0
4	EDO	B	414	-	3,3,3	0.48	0	2,2,2	0.23	0
4	EDO	B	407	-	3,3,3	0.54	0	2,2,2	0.10	0
4	EDO	A	406	-	3,3,3	0.45	0	2,2,2	0.23	0
4	EDO	A	403	-	3,3,3	0.43	0	2,2,2	0.36	0
7	SO4	A	433	-	4,4,4	0.15	0	6,6,6	0.78	0
5	NO3	A	427	-	1,3,3	0.79	0	0,3,3	-	-
10	MES	B	401[B]	-	12,12,12	1.93	1 (8%)	14,16,16	2.37	6 (42%)
4	EDO	A	415	-	3,3,3	0.50	0	2,2,2	0.16	0
4	EDO	A	413	-	3,3,3	0.44	0	2,2,2	0.26	0
4	EDO	A	422	-	3,3,3	0.55	0	2,2,2	0.35	0
4	EDO	A	426	-	3,3,3	0.49	0	2,2,2	0.62	0
4	EDO	A	405	-	3,3,3	0.43	0	2,2,2	0.25	0
7	SO4	B	422	-	4,4,4	0.12	0	6,6,6	0.51	0

Mol	Type	Chain	Res	Link	Bond lengths			Bond angles		
					Counts	RMSZ	# Z  > 2	Counts	RMSZ	# Z  > 2
4	EDO	B	416	-	3,3,3	0.49	0	2,2,2	0.21	0
4	EDO	B	408	-	3,3,3	0.45	0	2,2,2	0.29	0
4	EDO	A	411	-	3,3,3	0.48	0	2,2,2	0.25	0
7	SO4	A	431	-	4,4,4	0.11	0	6,6,6	0.83	0
5	NO3	A	412	-	1,3,3	0.74	0	0,3,3	-	-

In the following table, the Chirals column lists the number of chiral outliers, the number of chiral centers analysed, the number of these observed in the model and the number defined in the Chemical Component Dictionary. Similar counts are reported in the Torsion and Rings columns. '-' means no outliers of that kind were identified.

Mol	Type	Chain	Res	Link	Chirals	Torsions	Rings
4	EDO	C	504	-	-	0/1/1/1	-
4	EDO	B	410	-	-	0/1/1/1	-
3	ADP	A	401	8	-	6/12/32/32	0/3/3/3
4	EDO	B	404	-	-	1/1/1/1	-
4	EDO	B	402	-	-	0/1/1/1	-
4	EDO	B	419	-	-	0/1/1/1	-
4	EDO	B	417	-	-	0/1/1/1	-
6	GOL	A	414	-	-	2/4/4/4	-
4	EDO	B	413	-	-	0/1/1/1	-
4	EDO	B	415	-	-	0/1/1/1	-
4	EDO	A	424	-	-	0/1/1/1	-
4	EDO	B	405	-	-	1/1/1/1	-
4	EDO	B	406	-	-	1/1/1/1	-
4	EDO	A	421	-	-	1/1/1/1	-
4	EDO	B	403	-	-	0/1/1/1	-
6	GOL	A	410	-	-	2/4/4/4	-
4	EDO	B	412	-	-	1/1/1/1	-
4	EDO	A	416	-	-	0/1/1/1	-
4	EDO	A	418	-	-	0/1/1/1	-
4	EDO	B	409	-	-	0/1/1/1	-
4	EDO	C	501	-	-	1/1/1/1	-
6	GOL	A	425	-	-	3/4/4/4	-
6	GOL	A	419	-	-	2/4/4/4	-
4	EDO	B	411	-	-	0/1/1/1	-
4	EDO	C	502	-	-	0/1/1/1	-
4	EDO	C	503	-	-	0/1/1/1	-
4	EDO	B	420	-	-	1/1/1/1	-
4	EDO	A	402	-	-	1/1/1/1	-
4	EDO	A	404	-	-	0/1/1/1	-

Continued on next page...

Continued from previous page...

Mol	Type	Chain	Res	Link	Chirals	Torsions	Rings
4	EDO	A	417	-	-	1/1/1/1	-
4	EDO	B	418	-	-	0/1/1/1	-
4	EDO	A	423	-	-	0/1/1/1	-
4	EDO	B	414	-	-	0/1/1/1	-
4	EDO	B	407	-	-	0/1/1/1	-
4	EDO	A	406	-	-	0/1/1/1	-
4	EDO	A	403	-	-	1/1/1/1	-
10	MES	B	401[B]	-	-	2/6/14/14	0/1/1/1
4	EDO	A	415	-	-	1/1/1/1	-
4	EDO	A	413	-	-	0/1/1/1	-
4	EDO	A	422	-	-	1/1/1/1	-
4	EDO	A	426	-	-	1/1/1/1	-
4	EDO	A	405	-	-	1/1/1/1	-
4	EDO	B	416	-	-	1/1/1/1	-
4	EDO	B	408	-	-	0/1/1/1	-
4	EDO	A	411	-	-	1/1/1/1	-

All (2) bond length outliers are listed below:

Mol	Chain	Res	Type	Atoms	Z	Observed(Å)	Ideal(Å)
10	B	401[B]	MES	C8-S	-6.45	1.68	1.77
3	A	401	ADP	C5-C4	2.49	1.47	1.40

All (12) bond angle outliers are listed below:

Mol	Chain	Res	Type	Atoms	Z	Observed(°)	Ideal(°)
10	B	401[B]	MES	O2S-S-C8	4.33	112.12	106.92
10	B	401[B]	MES	C2-C3-N4	-4.02	104.01	110.10
10	B	401[B]	MES	C5-N4-C3	3.71	117.18	108.83
10	B	401[B]	MES	O1S-S-C8	3.38	110.98	106.92
3	A	401	ADP	N3-C2-N1	-3.17	123.72	128.68
3	A	401	ADP	C3'-C2'-C1'	2.79	105.17	100.98
6	A	410	GOL	C3-C2-C1	-2.53	101.86	111.70
10	B	401[B]	MES	O3S-S-C8	2.46	109.75	105.77
10	B	401[B]	MES	O2S-S-O1S	-2.26	106.12	113.95
6	A	419	GOL	C3-C2-C1	-2.17	103.28	111.70
3	A	401	ADP	O2'-C2'-C3'	-2.13	104.92	111.82
3	A	401	ADP	C4-C5-N7	-2.04	107.27	109.40

There are no chirality outliers.

All (33) torsion outliers are listed below:

Mol	Chain	Res	Type	Atoms
3	A	401	ADP	PA-O3A-PB-O2B
3	A	401	ADP	PA-O3A-PB-O3B
3	A	401	ADP	C5'-O5'-PA-O1A
3	A	401	ADP	C5'-O5'-PA-O3A
6	A	410	GOL	O1-C1-C2-O2
6	A	419	GOL	C1-C2-C3-O3
6	A	410	GOL	O1-C1-C2-C3
6	A	414	GOL	O1-C1-C2-C3
6	A	425	GOL	O1-C1-C2-C3
6	A	414	GOL	O1-C1-C2-O2
4	A	405	EDO	O1-C1-C2-O2
4	A	411	EDO	O1-C1-C2-O2
4	A	417	EDO	O1-C1-C2-O2
4	B	404	EDO	O1-C1-C2-O2
4	B	416	EDO	O1-C1-C2-O2
4	C	501	EDO	O1-C1-C2-O2
6	A	419	GOL	O2-C2-C3-O3
4	A	403	EDO	O1-C1-C2-O2
10	B	401[B]	MES	C8-C7-N4-C3
10	B	401[B]	MES	C8-C7-N4-C5
4	B	405	EDO	O1-C1-C2-O2
4	B	420	EDO	O1-C1-C2-O2
6	A	425	GOL	O2-C2-C3-O3
3	A	401	ADP	PB-O3A-PA-O5'
4	A	415	EDO	O1-C1-C2-O2
4	A	421	EDO	O1-C1-C2-O2
4	A	422	EDO	O1-C1-C2-O2
4	B	412	EDO	O1-C1-C2-O2
6	A	425	GOL	O1-C1-C2-O2
3	A	401	ADP	C5'-O5'-PA-O2A
4	A	402	EDO	O1-C1-C2-O2
4	A	426	EDO	O1-C1-C2-O2
4	B	406	EDO	O1-C1-C2-O2

There are no ring outliers.

12 monomers are involved in 16 short contacts:

Mol	Chain	Res	Type	Clashes	Symm-Clashes
3	A	401	ADP	1	0
4	A	421	EDO	1	0
4	C	501	EDO	1	0
6	A	425	GOL	3	0
6	A	419	GOL	1	0

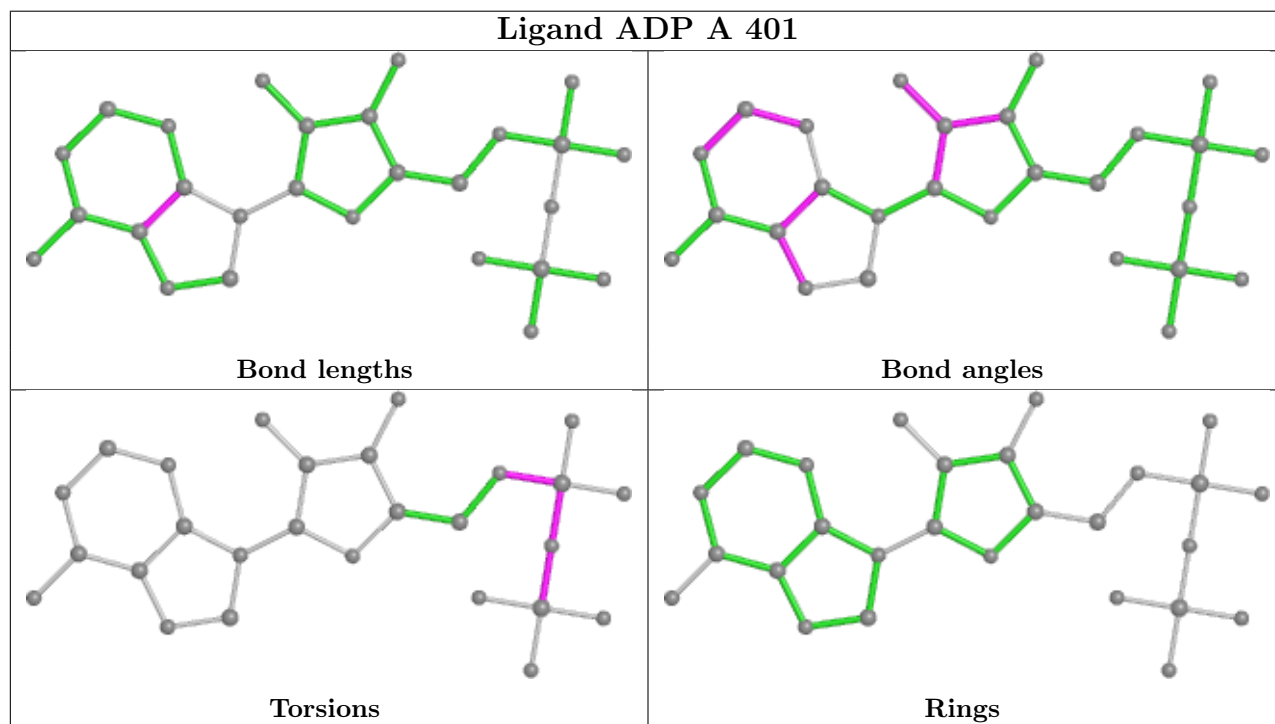
*Continued on next page...*



Continued from previous page...

Mol	Chain	Res	Type	Clashes	Symm-Clashes
4	B	420	EDO	1	0
5	A	429	NO3	1	0
4	A	417	EDO	1	0
10	B	401[B]	MES	2	0
4	A	426	EDO	2	0
4	A	405	EDO	1	0
4	A	411	EDO	1	0

The following is a two-dimensional graphical depiction of Mogul quality analysis of bond lengths, bond angles, torsion angles, and ring geometry for all instances of the Ligand of Interest. In addition, ligands with molecular weight > 250 and outliers as shown on the validation Tables will also be included. For torsion angles, if less than 5% of the Mogul distribution of torsion angles is within 10 degrees of the torsion angle in question, then that torsion angle is considered an outlier. Any bond that is central to one or more torsion angles identified as an outlier by Mogul will be highlighted in the graph. For rings, the root-mean-square deviation (RMSD) between the ring in question and similar rings identified by Mogul is calculated over all ring torsion angles. If the average RMSD is greater than 60 degrees and the minimal RMSD between the ring in question and any Mogul-identified rings is also greater than 60 degrees, then that ring is considered an outlier. The outliers are highlighted in purple. The color gray indicates Mogul did not find sufficient equivalents in the CSD to analyse the geometry.



## 5.7 Other polymers [\(i\)](#)

There are no such residues in this entry.

## 5.8 Polymer linkage issues

There are no chain breaks in this entry.

## 6 Fit of model and data

### 6.1 Protein, DNA and RNA chains

In the following table, the column labelled ‘#RSRZ > 2’ contains the number (and percentage) of RSRZ outliers, followed by percent RSRZ outliers for the chain as percentile scores relative to all X-ray entries and entries of similar resolution. The OWAB column contains the minimum, median, 95<sup>th</sup> percentile and maximum values of the occupancy-weighted average B-factor per residue. The column labelled ‘Q < 0.9’ lists the number of (and percentage) of residues with an average occupancy less than 0.9.

Mol	Chain	Analysed	<RSRZ>	#RSRZ>2	OWAB(Å <sup>2</sup> )	Q<0.9
1	A	359/364 (98%)	-0.00	10 (2%) 53 49	47, 64, 112, 148	0
1	B	350/364 (96%)	0.27	21 (6%) 21 18	54, 80, 130, 175	0
2	C	35/60 (58%)	0.16	3 (8%) 10 7	53, 70, 119, 126	0
2	D	34/60 (56%)	2.61	20 (58%) 0 0	99, 128, 180, 192	0
All	All	778/848 (91%)	0.24	54 (6%) 16 13	47, 74, 129, 192	0

All (54) RSRZ outliers are listed below:

Mol	Chain	Res	Type	RSRZ
1	B	93	PHE	7.5
1	A	93	PHE	6.8
1	B	92	ARG	5.6
2	D	409	LEU	5.5
2	D	388	PHE	5.4
2	D	378	TRP	5.4
1	B	91	LYS	5.0
2	D	406	GLU	4.6
1	B	35	SER	4.4
2	C	382	GLY	4.3
2	D	407	GLU	4.1
2	D	408	LYS	4.0
2	D	405	ALA	4.0
1	B	37	VAL	3.8
2	D	392	LEU	3.7
2	D	410	GLU	3.7
1	A	384	HIS	3.7
1	B	78	SER	3.5
1	A	28	VAL	3.5
1	B	76	CYS	3.3
1	B	90	ASP	3.3

*Continued on next page...*

*Continued from previous page...*

Mol	Chain	Res	Type	RSRZ
1	A	354	ARG	3.1
2	D	401	ARG	3.1
1	A	94	LYS	3.1
1	B	384	HIS	3.1
1	B	57	THR	3.0
1	B	77	ASP	2.9
2	D	394	HIS	2.8
2	D	402	THR	2.7
1	B	263	VAL	2.7
2	C	412	ARG	2.7
1	A	245	CYS	2.6
2	D	383	VAL	2.6
2	D	404	GLU	2.5
2	D	411	GLU	2.5
1	B	36	LYS	2.5
2	D	399	VAL	2.4
1	B	74	LYS	2.4
1	A	352	ASN	2.3
1	B	75	LEU	2.3
2	D	384	GLU	2.3
1	B	291	PHE	2.2
2	C	416	VAL	2.2
1	B	383	ARG	2.2
2	D	398	ALA	2.1
1	B	49	ASP	2.1
1	B	380	PRO	2.1
2	D	403	ARG	2.1
1	A	243	ALA	2.1
1	A	62[A]	ILE	2.1
1	B	58	ASP	2.1
1	A	242	SER	2.0
1	B	169	LEU	2.0
2	D	387	LYS	2.0

## 6.2 Non-standard residues in protein, DNA, RNA chains [i](#)

There are no non-standard protein/DNA/RNA residues in this entry.

## 6.3 Carbohydrates [i](#)

There are no monosaccharides in this entry.

## 6.4 Ligands

In the following table, the Atoms column lists the number of modelled atoms in the group and the number defined in the chemical component dictionary. The B-factors column lists the minimum, median, 95<sup>th</sup> percentile and maximum values of B factors of atoms in the group. The column labelled 'Q< 0.9' lists the number of atoms with occupancy less than 0.9.

Mol	Type	Chain	Res	Atoms	RSCC	RSR	B-factors(Å <sup>2</sup> )	Q<0.9
9	CL	B	424	1/1	0.37	0.21	120,120,120,120	0
4	EDO	A	422	4/4	0.38	0.97	77,103,119,124	0
4	EDO	B	411	4/4	0.48	0.41	91,110,123,123	0
4	EDO	A	421	4/4	0.49	0.48	73,88,99,113	0
4	EDO	B	405	4/4	0.49	0.26	80,98,118,118	0
6	GOL	A	419	6/6	0.61	0.37	98,118,135,145	0
6	GOL	A	425	6/6	0.66	0.44	77,100,119,130	0
4	EDO	C	504	4/4	0.68	0.40	107,129,155,155	0
9	CL	A	440	1/1	0.70	0.07	117,117,117,117	0
4	EDO	A	423	4/4	0.70	0.64	81,97,120,144	0
6	GOL	A	414	6/6	0.71	0.38	96,116,139,139	0
9	CL	A	441	1/1	0.72	0.21	78,78,78,78	0
4	EDO	A	426	4/4	0.72	0.40	75,91,109,109	0
4	EDO	B	407	4/4	0.73	0.37	89,106,116,116	0
9	CL	C	506	1/1	0.74	0.13	106,106,106,106	0
4	EDO	B	415	4/4	0.75	0.39	90,109,119,124	0
4	EDO	B	416	4/4	0.76	0.79	98,117,132,132	0
4	EDO	C	502	4/4	0.77	0.25	84,104,125,128	0
4	EDO	B	420	4/4	0.78	0.31	102,122,124,130	0
5	NO3	A	408	4/4	0.78	0.28	83,95,105,107	0
4	EDO	B	403	4/4	0.78	0.28	98,118,120,134	0
4	EDO	B	410	4/4	0.79	0.39	92,110,119,119	0
4	EDO	A	416	4/4	0.79	0.34	82,101,113,121	0
5	NO3	A	420	4/4	0.79	0.47	115,118,131,132	0
9	CL	A	439	1/1	0.79	0.16	106,106,106,106	0
4	EDO	B	414	4/4	0.80	0.64	93,112,120,120	0
4	EDO	A	417	4/4	0.80	0.28	83,100,111,117	0
7	SO4	A	435	5/5	0.81	0.77	117,123,128,162	0
9	CL	B	423	1/1	0.81	0.10	102,102,102,102	0
4	EDO	A	415	4/4	0.81	0.21	79,100,110,122	0
9	CL	B	428	1/1	0.81	0.25	100,100,100,100	0
4	EDO	B	402	4/4	0.81	0.14	85,102,104,110	0
9	CL	B	427	1/1	0.83	0.06	104,104,104,104	0
7	SO4	A	434	5/5	0.84	0.33	94,97,135,148	0
9	CL	C	507	1/1	0.84	0.05	115,115,115,115	0
4	EDO	B	404	4/4	0.85	0.18	94,118,141,141	0
9	CL	B	425	1/1	0.85	0.08	87,87,87,87	0

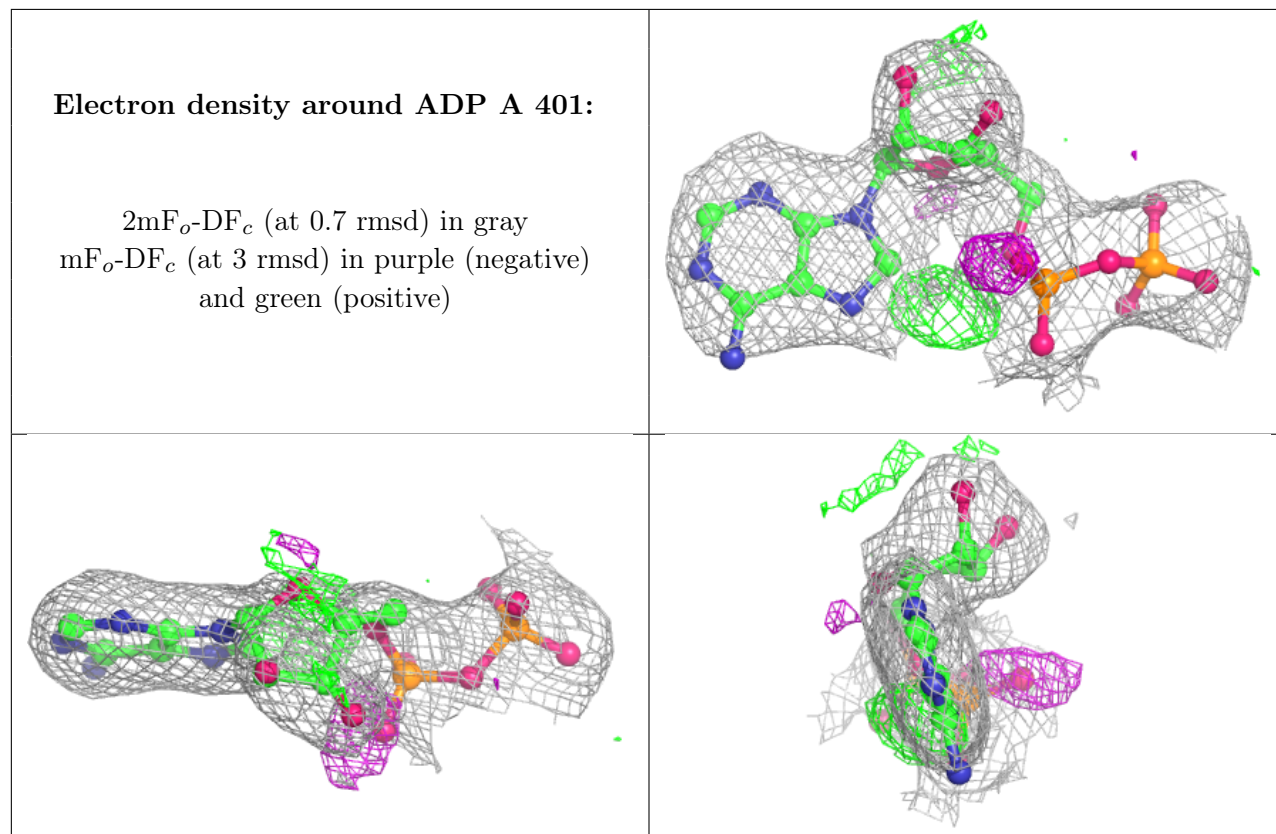
*Continued on next page...*

Continued from previous page...

Mol	Type	Chain	Res	Atoms	RSCC	RSR	B-factors(Å <sup>2</sup> )	Q<0.9
4	EDO	B	406	4/4	0.85	0.46	109,130,142,143	0
9	CL	D	501	1/1	0.85	0.10	101,101,101,101	0
6	GOL	A	410	6/6	0.86	0.19	91,113,131,135	0
4	EDO	B	413	4/4	0.86	0.45	80,96,102,115	0
9	CL	B	429	1/1	0.86	0.27	107,107,107,107	0
4	EDO	C	503	4/4	0.87	0.16	67,80,93,100	0
4	EDO	B	408	4/4	0.87	0.42	103,124,133,133	0
4	EDO	B	409	4/4	0.88	0.19	92,116,120,140	0
5	NO3	A	427	4/4	0.88	0.16	85,89,101,102	0
4	EDO	A	411	4/4	0.89	0.14	86,104,111,111	0
4	EDO	A	424	4/4	0.89	0.28	95,114,129,129	0
4	EDO	A	405	4/4	0.89	0.14	88,105,113,113	0
4	EDO	A	413	4/4	0.90	0.18	74,88,95,102	0
4	EDO	A	406	4/4	0.90	0.31	102,122,132,138	0
7	SO4	A	432	5/5	0.91	0.21	77,107,129,133	0
3	ADP	A	401	27/27	0.91	0.20	47,65,100,106	27
4	EDO	A	402	4/4	0.91	0.18	60,75,82,90	0
4	EDO	A	404	4/4	0.91	0.45	79,97,115,116	0
5	NO3	A	428	4/4	0.91	0.17	93,97,99,104	0
5	NO3	A	429	4/4	0.92	0.17	73,88,126,136	0
9	CL	B	426	1/1	0.92	0.40	123,123,123,123	0
4	EDO	B	419	4/4	0.93	0.25	104,125,134,138	0
4	EDO	B	417	4/4	0.93	0.29	74,89,98,102	0
5	NO3	A	412	4/4	0.93	0.23	80,95,98,104	0
10	MES	B	401[B]	12/12	0.93	0.21	79,108,143,147	0
4	EDO	B	412	4/4	0.94	0.39	78,93,108,108	0
5	NO3	A	407	4/4	0.94	0.24	84,86,90,100	0
4	EDO	A	418	4/4	0.94	0.10	64,82,89,107	0
5	NO3	A	409	4/4	0.94	0.28	90,93,101,106	0
4	EDO	A	403	4/4	0.94	0.29	68,82,91,91	0
4	EDO	B	418	4/4	0.94	0.09	86,105,127,129	0
4	EDO	C	501	4/4	0.96	0.35	53,80,97,117	0
9	CL	A	438	1/1	0.96	0.27	79,79,79,79	0
7	SO4	C	505	5/5	0.97	0.21	88,97,107,109	0
7	SO4	B	422	5/5	0.97	0.13	68,83,102,106	0
7	SO4	B	421	5/5	0.98	0.11	61,66,87,94	0
8	MG	A	436	1/1	0.98	0.12	73,73,73,73	0
9	CL	A	437	1/1	0.98	0.11	85,85,85,85	0
7	SO4	A	430	5/5	0.99	0.09	57,62,63,75	0
7	SO4	A	433	5/5	0.99	0.10	68,69,75,78	0
7	SO4	A	431	5/5	1.00	0.11	50,56,62,65	0

The following is a graphical depiction of the model fit to experimental electron density of all

instances of the Ligand of Interest. In addition, ligands with molecular weight > 250 and outliers as shown on the geometry validation Tables will also be included. Each fit is shown from different orientation to approximate a three-dimensional view.



## 6.5 Other polymers [i](#)

There are no such residues in this entry.