



# Full wwPDB X-ray Structure Validation Report ⓘ

Dec 3, 2023 – 01:17 pm GMT

PDB ID : 2VKU  
Title : 4,4'-Dihydroxybenzophenone Mimics Sterol Substrate in the Binding Site of Sterol 14alpha-Demethylase (CYP51) in the X-ray Structure of the Complex  
Authors : Eddine, A.N.; von Kries, J.P.; Podust, M.V.; Podust, L.M.  
Deposited on : 2007-12-29  
Resolution : 1.95 Å(reported)

This is a Full wwPDB X-ray Structure Validation Report for a publicly released PDB entry.

We welcome your comments at [validation@mail.wwpdb.org](mailto:validation@mail.wwpdb.org)

A user guide is available at

<https://www.wwpdb.org/validation/2017/XrayValidationReportHelp>

with specific help available everywhere you see the ⓘ symbol.

The types of validation reports are described at

<http://www.wwpdb.org/validation/2017/FAQs#types>.

---

The following versions of software and data (see [references ⓘ](#)) were used in the production of this report:

MolProbity : **FAILED**  
Mogul : 1.8.4, CSD as541be (2020)  
Xtriage (Phenix) : 1.13  
EDS : 2.36  
buster-report : 1.1.7 (2018)  
Percentile statistics : 20191225.v01 (using entries in the PDB archive December 25th 2019)  
Refmac : 5.8.0158  
CCP4 : 7.0.044 (Gargrove)  
Ideal geometry (proteins) : Engh & Huber (2001)  
Ideal geometry (DNA, RNA) : Parkinson et al. (1996)  
Validation Pipeline (wwPDB-VP) : 2.36

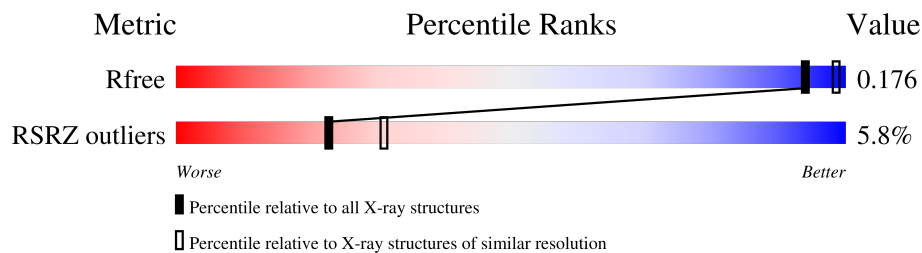
# 1 Overall quality at a glance

The following experimental techniques were used to determine the structure:

*X-RAY DIFFRACTION*

The reported resolution of this entry is 1.95 Å.

Percentile scores (ranging between 0-100) for global validation metrics of the entry are shown in the following graphic. The table shows the number of entries on which the scores are based.



Metric	Whole archive (#Entries)	Similar resolution (#Entries, resolution range(Å))
$R_{free}$	130704	2580 (1.96-1.96)
RSRZ outliers	127900	2539 (1.96-1.96)

MolProbity failed to run properly - the sequence quality summary graphics cannot be shown.

## 2 Entry composition [i](#)

There are 5 unique types of molecules in this entry. The entry contains 4217 atoms, of which 0 are hydrogens and 0 are deuteriums.

In the tables below, the ZeroOcc column contains the number of atoms modelled with zero occupancy, the AltConf column contains the number of residues with at least one atom in alternate conformation and the Trace column contains the number of residues modelled with at most 2 atoms.

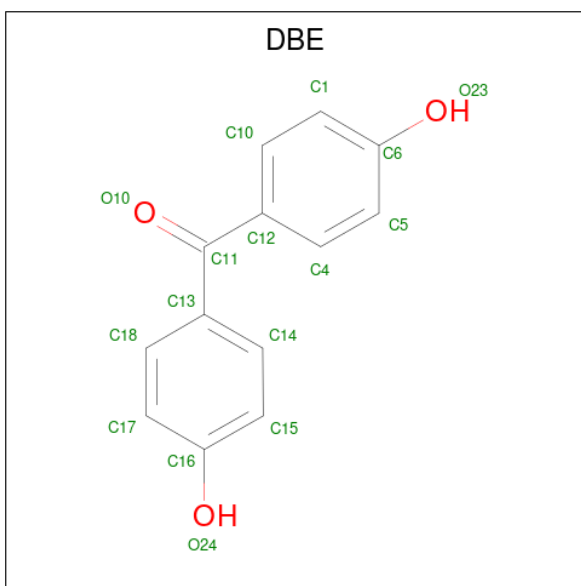
- Molecule 1 is a protein called CYTOCHROME P450 51.

Mol	Chain	Residues	Atoms					ZeroOcc	AltConf	Trace
			Total	C	N	O	S			
1	A	445	3546	2233	639	657	17	0	3	1

There are 2 discrepancies between the modelled and reference sequences:

Chain	Residue	Modelled	Actual	Comment	Reference
A	37	LEU	CYS	engineered mutation	UNP P0A512
A	442	ALA	CYS	engineered mutation	UNP P0A512

- Molecule 2 is bis(4-hydroxyphenyl)methanone (three-letter code: DBE) (formula:  $C_{13}H_{10}O_3$ ).



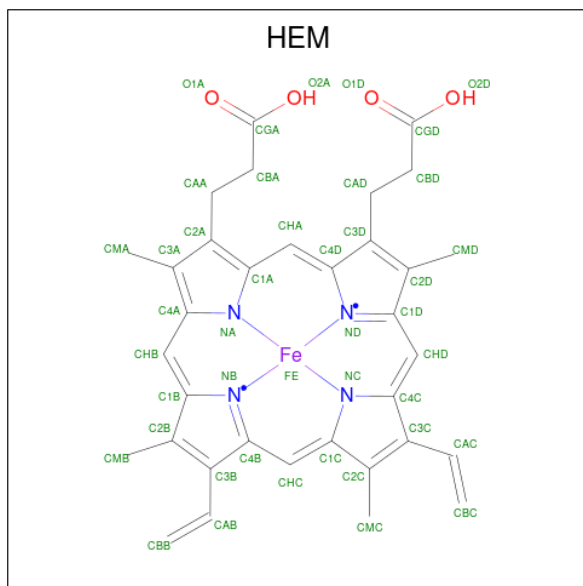
Mol	Chain	Residues	Atoms			ZeroOcc	AltConf
2	A	1	Total	C	O	0	0
			16	13	3		
2	A	1	Total	C	O	0	1
			32	26	6		

*Continued on next page...*

Continued from previous page...

Mol	Chain	Residues	Atoms			ZeroOcc	AltConf
2	A	1	Total	C	O	0	0
			16	13	3		
2	A	1	Total	C	O	0	0
			16	13	3		

- Molecule 3 is PROTOPORPHYRIN IX CONTAINING FE (three-letter code: HEM) (formula:  $C_{34}H_{32}FeN_4O_4$ ).



Mol	Chain	Residues	Atoms				ZeroOcc	AltConf	
3	A	1	Total	C	Fe	N	O	0	0
			43	34	1	4	4		

- Molecule 4 is SULFATE ION (three-letter code: SO4) (formula:  $O_4S$ ).



Mol	Chain	Residues	Atoms			ZeroOcc	AltConf
4	A	1	Total	O	S	0	0
			5	4	1		
4	A	1	Total	O	S	0	0
			5	4	1		
4	A	1	Total	O	S	0	0
			5	4	1		
4	A	1	Total	O	S	0	0
			5	4	1		
4	A	1	Total	O	S	0	0
			5	4	1		

- Molecule 5 is water.

Mol	Chain	Residues	Atoms		ZeroOcc	AltConf
5	A	518	Total	O	0	0
			518	518		

MolProbity failed to run properly - this section is therefore empty.

### 3 Data and refinement statistics

Property	Value	Source
Space group	P 21 21 21	Depositor
Cell constants a, b, c, $\alpha$ , $\beta$ , $\gamma$	77.73Å 82.09Å 85.86Å 90.00° 90.00° 90.00°	Depositor
Resolution (Å)	47.17 – 1.95 47.17 – 1.95	Depositor EDS
% Data completeness (in resolution range)	99.5 (47.17-1.95) 99.6 (47.17-1.95)	Depositor EDS
$R_{merge}$	0.08	Depositor
$R_{sym}$	(Not available)	Depositor
$\langle I/\sigma(I) \rangle$ <sup>1</sup>	4.41 (at 1.95Å)	Xtrriage
Refinement program	CNS 1.2	Depositor
R, $R_{free}$	0.177 , 0.212 0.174 , 0.176	Depositor DCC
$R_{free}$ test set	4033 reflections (9.95%)	wwPDB-VP
Wilson B-factor (Å <sup>2</sup> )	20.0	Xtrriage
Anisotropy	0.472	Xtrriage
Bulk solvent $k_{sol}$ (e/Å <sup>3</sup> ), $B_{sol}$ (Å <sup>2</sup> )	0.35 , 58.6	EDS
L-test for twinning <sup>2</sup>	$\langle  L  \rangle = 0.49$ , $\langle L^2 \rangle = 0.32$	Xtrriage
Estimated twinning fraction	0.013 for -h,l,k	Xtrriage
$F_o, F_c$ correlation	0.96	EDS
Total number of atoms	4217	wwPDB-VP
Average B, all atoms (Å <sup>2</sup> )	24.0	wwPDB-VP

Xtrriage's analysis on translational NCS is as follows: *The largest off-origin peak in the Patterson function is 4.94% of the height of the origin peak. No significant pseudotranslation is detected.*

<sup>1</sup>Intensities estimated from amplitudes.

<sup>2</sup>Theoretical values of  $\langle |L| \rangle$ ,  $\langle L^2 \rangle$  for acentric reflections are 0.5, 0.333 respectively for untwinned datasets, and 0.375, 0.2 for perfectly twinned datasets.

## 4 Model quality [i](#)

### 4.1 Standard geometry [i](#)

MolProbity failed to run properly - this section is therefore empty.

### 4.2 Too-close contacts [i](#)

MolProbity failed to run properly - this section is therefore empty.

### 4.3 Torsion angles [i](#)

#### 4.3.1 Protein backbone [i](#)

MolProbity failed to run properly - this section is therefore empty.

#### 4.3.2 Protein sidechains [i](#)

MolProbity failed to run properly - this section is therefore empty.

#### 4.3.3 RNA [i](#)

MolProbity failed to run properly - this section is therefore empty.

### 4.4 Non-standard residues in protein, DNA, RNA chains [i](#)

There are no non-standard protein/DNA/RNA residues in this entry.

### 4.5 Carbohydrates [i](#)

There are no monosaccharides in this entry.

### 4.6 Ligand geometry [i](#)

12 ligands are modelled in this entry.

In the following table, the Counts columns list the number of bonds (or angles) for which Mogul statistics could be retrieved, the number of bonds (or angles) that are observed in the model and the number of bonds (or angles) that are defined in the Chemical Component Dictionary. The Link column lists molecule types, if any, to which the group is linked. The Z score for a bond

length (or angle) is the number of standard deviations the observed value is removed from the expected value. A bond length (or angle) with  $|Z| > 2$  is considered an outlier worth inspection. RMSZ is the root-mean-square of all Z scores of the bond lengths (or angles).

Mol	Type	Chain	Res	Link	Bond lengths			Bond angles		
					Counts	RMSZ	# Z  > 2	Counts	RMSZ	# Z  > 2
2	DBE	A	1447[A]	-	17,17,17	2.03	6 (35%)	23,23,23	0.91	1 (4%)
4	SO4	A	1456	-	4,4,4	0.70	0	6,6,6	0.42	0
3	HEM	A	1450	1	41,50,50	1.31	5 (12%)	45,82,82	1.10	2 (4%)
4	SO4	A	1454	-	4,4,4	0.60	0	6,6,6	0.40	0
4	SO4	A	1455	-	4,4,4	0.68	0	6,6,6	0.38	0
4	SO4	A	1452	-	4,4,4	0.49	0	6,6,6	0.39	0
2	DBE	A	1448	-	17,17,17	1.86	5 (29%)	23,23,23	1.09	1 (4%)
4	SO4	A	1457	-	4,4,4	0.65	0	6,6,6	0.41	0
2	DBE	A	1447[B]	-	17,17,17	1.90	8 (47%)	23,23,23	0.88	1 (4%)
2	DBE	A	1446	-	17,17,17	2.05	8 (47%)	23,23,23	1.12	1 (4%)
2	DBE	A	1449	-	17,17,17	1.88	7 (41%)	23,23,23	0.93	1 (4%)
4	SO4	A	1453	-	4,4,4	0.61	0	6,6,6	0.45	0

In the following table, the Chirals column lists the number of chiral outliers, the number of chiral centers analysed, the number of these observed in the model and the number defined in the Chemical Component Dictionary. Similar counts are reported in the Torsion and Rings columns. '-' means no outliers of that kind were identified.

Mol	Type	Chain	Res	Link	Chirals	Torsions	Rings
2	DBE	A	1447[A]	-	-	4/8/8/8	0/2/2/2
3	HEM	A	1450	1	-	3/12/54/54	-
2	DBE	A	1448	-	-	4/8/8/8	0/2/2/2
2	DBE	A	1447[B]	-	-	2/8/8/8	0/2/2/2
2	DBE	A	1446	-	-	0/8/8/8	0/2/2/2
2	DBE	A	1449	-	-	0/8/8/8	0/2/2/2

All (39) bond length outliers are listed below:

Mol	Chain	Res	Type	Atoms	Z	Observed(Å)	Ideal(Å)
3	A	1450	HEM	C3C-CAC	-3.35	1.40	1.47
2	A	1447[A]	DBE	C12-C11	3.02	1.54	1.49
2	A	1446	DBE	C14-C13	3.00	1.44	1.39
2	A	1446	DBE	C12-C11	2.92	1.54	1.49
2	A	1448	DBE	C18-C13	2.92	1.44	1.39
2	A	1446	DBE	C4-C12	2.92	1.44	1.39
2	A	1447[A]	DBE	C14-C13	2.85	1.44	1.39

*Continued on next page...*



*Continued from previous page...*

Mol	Chain	Res	Type	Atoms	Z	Observed(Å)	Ideal(Å)
2	A	1447[B]	DBE	C10-C12	2.81	1.44	1.39
2	A	1446	DBE	C13-C11	2.80	1.54	1.49
2	A	1447[A]	DBE	C4-C12	2.76	1.44	1.39
2	A	1449	DBE	C18-C13	2.73	1.44	1.39
3	A	1450	HEM	CBB-CAB	2.70	1.43	1.30
2	A	1446	DBE	C18-C13	2.70	1.43	1.39
2	A	1447[B]	DBE	C1-C10	2.69	1.43	1.38
2	A	1449	DBE	C4-C12	2.64	1.43	1.39
2	A	1447[B]	DBE	C18-C13	2.61	1.43	1.39
2	A	1447[A]	DBE	C4-C5	2.56	1.43	1.38
2	A	1447[A]	DBE	C18-C13	2.56	1.43	1.39
2	A	1449	DBE	C14-C13	2.54	1.43	1.39
2	A	1448	DBE	C17-C16	2.54	1.43	1.38
2	A	1448	DBE	C4-C5	2.54	1.43	1.38
2	A	1449	DBE	C13-C11	2.49	1.53	1.49
2	A	1446	DBE	C4-C5	2.49	1.43	1.38
2	A	1447[B]	DBE	C12-C11	2.49	1.53	1.49
2	A	1448	DBE	C14-C13	2.47	1.43	1.39
2	A	1449	DBE	C4-C5	2.36	1.43	1.38
2	A	1448	DBE	C4-C12	2.36	1.43	1.39
2	A	1449	DBE	C12-C11	2.31	1.53	1.49
2	A	1447[B]	DBE	C14-C13	2.31	1.43	1.39
2	A	1447[A]	DBE	C14-C15	2.28	1.42	1.38
2	A	1447[B]	DBE	C5-C6	2.18	1.43	1.38
3	A	1450	HEM	CHA-C4D	2.16	1.40	1.35
2	A	1449	DBE	C14-C15	2.15	1.42	1.38
2	A	1447[B]	DBE	C17-C18	2.08	1.42	1.38
2	A	1446	DBE	C14-C15	2.04	1.42	1.38
2	A	1447[B]	DBE	C4-C5	2.03	1.42	1.38
2	A	1446	DBE	C1-C6	2.02	1.42	1.38
3	A	1450	HEM	CBC-CAC	2.01	1.42	1.29
3	A	1450	HEM	C1A-NA	2.00	1.40	1.36

All (7) bond angle outliers are listed below:

Mol	Chain	Res	Type	Atoms	Z	Observed(°)	Ideal(°)
2	A	1446	DBE	C13-C11-C12	3.40	125.87	120.28
2	A	1448	DBE	C13-C11-C12	2.78	124.86	120.28
3	A	1450	HEM	C4B-C3B-C2B	-2.70	104.97	107.11
2	A	1447[A]	DBE	C13-C11-C12	2.57	124.51	120.28
2	A	1449	DBE	C13-C11-C12	2.56	124.49	120.28
2	A	1447[B]	DBE	C13-C11-C12	2.16	123.83	120.28

*Continued on next page...*

*Continued from previous page...*

Mol	Chain	Res	Type	Atoms	Z	Observed(°)	Ideal(°)
3	A	1450	HEM	CMA-C3A-C4A	-2.02	125.36	128.46

There are no chirality outliers.

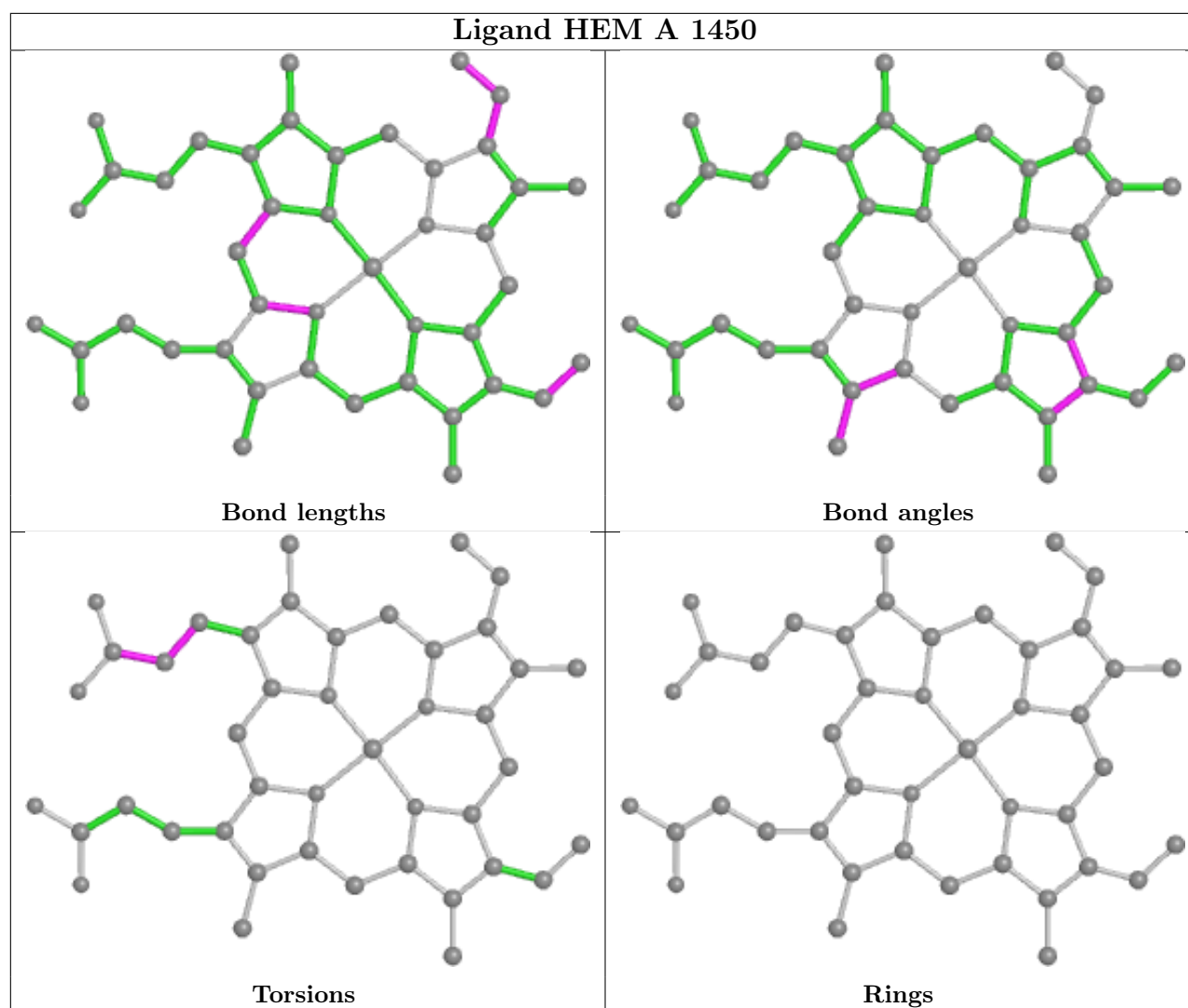
All (13) torsion outliers are listed below:

Mol	Chain	Res	Type	Atoms
2	A	1447[A]	DBE	O10-C11-C13-C18
2	A	1447[A]	DBE	C12-C11-C13-C18
2	A	1447[A]	DBE	C12-C11-C13-C14
2	A	1447[A]	DBE	O10-C11-C13-C14
3	A	1450	HEM	C3D-CAD-CBD-CGD
2	A	1448	DBE	O10-C11-C12-C10
2	A	1448	DBE	C13-C11-C12-C10
2	A	1447[B]	DBE	O10-C11-C12-C4
2	A	1447[B]	DBE	C13-C11-C12-C4
2	A	1448	DBE	O10-C11-C12-C4
2	A	1448	DBE	C13-C11-C12-C4
3	A	1450	HEM	CAD-CBD-CGD-O1D
3	A	1450	HEM	CAD-CBD-CGD-O2D

There are no ring outliers.

No monomer is involved in short contacts.

The following is a two-dimensional graphical depiction of Mogul quality analysis of bond lengths, bond angles, torsion angles, and ring geometry for all instances of the Ligand of Interest. In addition, ligands with molecular weight > 250 and outliers as shown on the validation Tables will also be included. For torsion angles, if less than 5% of the Mogul distribution of torsion angles is within 10 degrees of the torsion angle in question, then that torsion angle is considered an outlier. Any bond that is central to one or more torsion angles identified as an outlier by Mogul will be highlighted in the graph. For rings, the root-mean-square deviation (RMSD) between the ring in question and similar rings identified by Mogul is calculated over all ring torsion angles. If the average RMSD is greater than 60 degrees and the minimal RMSD between the ring in question and any Mogul-identified rings is also greater than 60 degrees, then that ring is considered an outlier. The outliers are highlighted in purple. The color gray indicates Mogul did not find sufficient equivalents in the CSD to analyse the geometry.



#### 4.7 Other polymers [i](#)

There are no such residues in this entry.

#### 4.8 Polymer linkage issues [i](#)

There are no chain breaks in this entry.

## 5 Fit of model and data

### 5.1 Protein, DNA and RNA chains

In the following table, the column labelled ‘#RSRZ> 2’ contains the number (and percentage) of RSRZ outliers, followed by percent RSRZ outliers for the chain as percentile scores relative to all X-ray entries and entries of similar resolution. The OWAB column contains the minimum, median, 95<sup>th</sup> percentile and maximum values of the occupancy-weighted average B-factor per residue. The column labelled ‘Q< 0.9’ lists the number of (and percentage) of residues with an average occupancy less than 0.9.

Mol	Chain	Analysed	<RSRZ>	#RSRZ>2	OWAB(Å <sup>2</sup> )	Q<0.9
1	A	445/455 (97%)	0.09	26 (5%) <span style="border: 1px solid red; padding: 2px;">23</span> <span style="border: 1px solid red; padding: 2px;">31</span>	11, 20, 49, 65	0

All (26) RSRZ outliers are listed below:

Mol	Chain	Res	Type	RSRZ
1	A	218	THR	7.2
1	A	219	ASP	5.9
1	A	217	PRO	5.4
1	A	216	PRO	5.0
1	A	7	PRO	4.3
1	A	222	ASP	3.9
1	A	13	HIS	3.8
1	A	88	VAL	3.7
1	A	86	GLY	3.5
1	A	87	VAL	3.5
1	A	220	LYS	3.2
1	A	8	ARG	3.2
1	A	450	GLY	3.0
1	A	14	ASP	3.0
1	A	215	ASN	3.0
1	A	90	ASP	3.0
1	A	214	ALA	2.8
1	A	85	GLU	2.8
1	A	15	GLU	2.8
1	A	89	PHE	2.6
1	A	337	HIS	2.4
1	A	11	GLY	2.4
1	A	221	SER	2.3
1	A	93	PRO	2.3
1	A	223	ARG	2.3
1	A	235	GLU	2.2

## 5.2 Non-standard residues in protein, DNA, RNA chains [i](#)

There are no non-standard protein/DNA/RNA residues in this entry.

## 5.3 Carbohydrates [i](#)

There are no monosaccharides in this entry.

## 5.4 Ligands [i](#)

In the following table, the Atoms column lists the number of modelled atoms in the group and the number defined in the chemical component dictionary. The B-factors column lists the minimum, median, 95<sup>th</sup> percentile and maximum values of B factors of atoms in the group. The column labelled 'Q< 0.9' lists the number of atoms with occupancy less than 0.9.

Mol	Type	Chain	Res	Atoms	RSCC	RSR	B-factors(Å <sup>2</sup> )	Q<0.9
2	DBE	A	1447[A]	16/16	0.70	0.35	37,40,41,42	16
2	DBE	A	1447[B]	16/16	0.70	0.35	35,36,37,38	16
4	SO4	A	1457	5/5	0.81	0.23	98,98,99,99	0
4	SO4	A	1456	5/5	0.84	0.26	64,64,66,66	0
2	DBE	A	1448	16/16	0.86	0.18	24,27,30,32	0
2	DBE	A	1446	16/16	0.90	0.15	29,31,34,35	0
4	SO4	A	1455	5/5	0.93	0.17	63,63,64,64	0
2	DBE	A	1449	16/16	0.95	0.14	14,21,24,25	0
4	SO4	A	1454	5/5	0.97	0.10	32,33,34,38	0
3	HEM	A	1450	43/43	0.97	0.13	10,13,27,37	0
4	SO4	A	1453	5/5	0.98	0.10	31,31,34,35	0
4	SO4	A	1452	5/5	0.99	0.12	23,25,27,27	0

## 5.5 Other polymers [i](#)

There are no such residues in this entry.