



Full wwPDB X-ray Structure Validation Report ⓘ

Nov 2, 2023 – 03:29 PM EDT

PDB ID : 3VGA
Title : Crystal structure of human adenosine A2A receptor with an allosteric inverse-agonist antibody at 3.1 Å resolution
Authors : Hino, T.; Arakawa, T.; Iwanari, H.; Yurugi-Kobayashi, T.; Ikeda-Suno, C.; Nakada-Nakura, Y.; Kusano-Arai, O.; Weyand, S.; Shimamura, T.; Nomura, N.; Cameron, A.D.; Kobayashi, T.; Hamakubo, T.; Iwata, S.; Murata, T.
Deposited on : 2011-08-04
Resolution : 3.10 Å (reported)

This is a Full wwPDB X-ray Structure Validation Report for a publicly released PDB entry.

We welcome your comments at validation@mail.wwpdb.org

A user guide is available at

<https://www.wwpdb.org/validation/2017/XrayValidationReportHelp>

with specific help available everywhere you see the ⓘ symbol.

The types of validation reports are described at

<http://www.wwpdb.org/validation/2017/FAQs#types>.

The following versions of software and data (see [references](#) ①) were used in the production of this report:

MolProbity : 4.02b-467
Mogul : 1.8.5 (274361), CSD as541be (2020)
Xtrriage (Phenix) : 1.13
EDS : 2.36
buster-report : 1.1.7 (2018)
Percentile statistics : 20191225.v01 (using entries in the PDB archive December 25th 2019)
Refmac : 5.8.0158
CCP4 : 7.0.044 (Gargrove)
Ideal geometry (proteins) : Engh & Huber (2001)
Ideal geometry (DNA, RNA) : Parkinson et al. (1996)
Validation Pipeline (wwPDB-VP) : 2.36

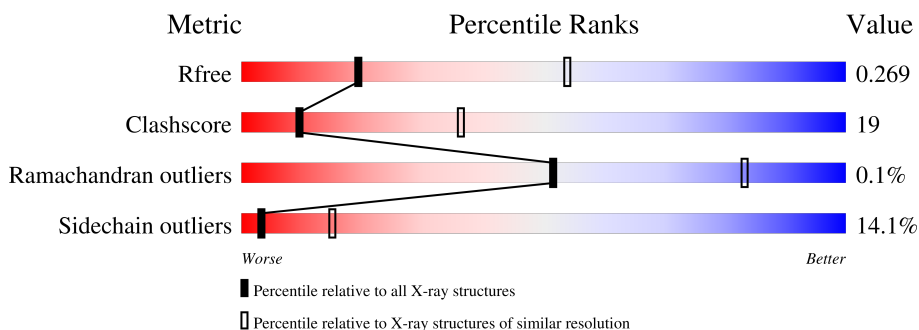
1 Overall quality at a glance

The following experimental techniques were used to determine the structure:

X-RAY DIFFRACTION

The reported resolution of this entry is 3.10 Å.

Percentile scores (ranging between 0-100) for global validation metrics of the entry are shown in the following graphic. The table shows the number of entries on which the scores are based.



Metric	Whole archive (#Entries)	Similar resolution (#Entries, resolution range(Å))
R_{free}	130704	1094 (3.10-3.10)
Clashscore	141614	1184 (3.10-3.10)
Ramachandran outliers	138981	1141 (3.10-3.10)
Sidechain outliers	138945	1141 (3.10-3.10)

The table below summarises the geometric issues observed across the polymeric chains and their fit to the electron density. The red, orange, yellow and green segments of the lower bar indicate the fraction of residues that contain outliers for ≥ 3 , 2, 1 and 0 types of geometric quality criteria respectively. A grey segment represents the fraction of residues that are not modelled. The numeric value for each fraction is indicated below the corresponding segment, with a dot representing fractions $\leq 5\%$.

Mol	Chain	Length	Quality of chain
1	A	326	53% (green), 34% (yellow), 9% (grey)
2	B	214	60% (green), 35% (yellow), 5% (orange), 2% (grey)
3	C	226	57% (green), 34% (yellow), 7% (orange), 2% (grey)

2 Entry composition [i](#)

There are 5 unique types of molecules in this entry. The entry contains 5635 atoms, of which 0 are hydrogens and 0 are deuteriums.

In the tables below, the ZeroOcc column contains the number of atoms modelled with zero occupancy, the AltConf column contains the number of residues with at least one atom in alternate conformation and the Trace column contains the number of residues modelled with at most 2 atoms.

- Molecule 1 is a protein called Adenosine receptor A2a.

Mol	Chain	Residues	Atoms					ZeroOcc	AltConf	Trace
			Total	C	N	O	S			
1	A	296	2295	1517	378	380	20	0	0	0

There are 11 discrepancies between the modelled and reference sequences:

Chain	Residue	Modelled	Actual	Comment	Reference
A	154	GLN	ASN	engineered mutation	UNP P29274
A	317	HIS	-	expression tag	UNP P29274
A	318	HIS	-	expression tag	UNP P29274
A	319	HIS	-	expression tag	UNP P29274
A	320	HIS	-	expression tag	UNP P29274
A	321	HIS	-	expression tag	UNP P29274
A	322	HIS	-	expression tag	UNP P29274
A	323	HIS	-	expression tag	UNP P29274
A	324	HIS	-	expression tag	UNP P29274
A	325	HIS	-	expression tag	UNP P29274
A	326	HIS	-	expression tag	UNP P29274

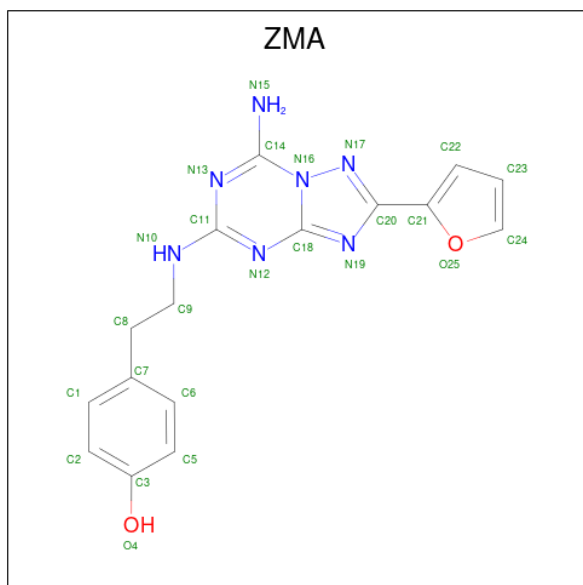
- Molecule 2 is a protein called antibody fab fragment light chain.

Mol	Chain	Residues	Atoms					ZeroOcc	AltConf	Trace
			Total	C	N	O	S			
2	B	212	1635	1025	274	330	6	0	0	0

- Molecule 3 is a protein called antibody fab fragment heavy chain.

Mol	Chain	Residues	Atoms					ZeroOcc	AltConf	Trace
			Total	C	N	O	S			
3	C	220	1666	1051	274	336	5	0	0	0

- Molecule 4 is 4-{2-[(7-amino-2-furan-2-yl)[1,2,4]triazolo[1,5-a][1,3,5]triazin-5-yl)amino]ethyl}phenol (three-letter code: ZMA) (formula: C₁₆H₁₅N₇O₂).



Mol	Chain	Residues	Atoms				ZeroOcc	AltConf
			Total	C	N	O		
4	A	1	25	16	7	2	0	0

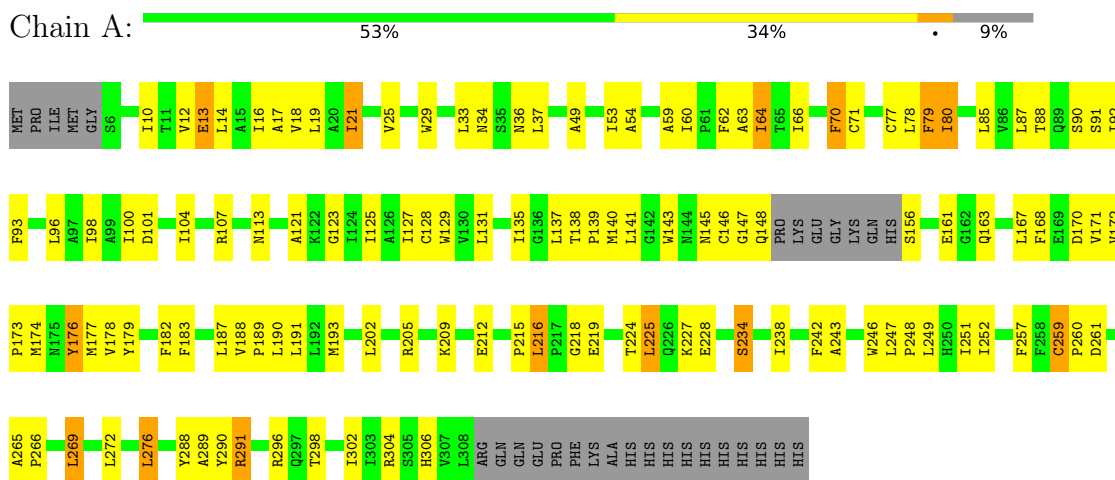
- Molecule 5 is water.

Mol	Chain	Residues	Atoms		ZeroOcc	AltConf
5	A	2	Total	O	0	0
			2	2		
5	B	5	Total	O	0	0
			5	5		
5	C	7	Total	O	0	0
			7	7		

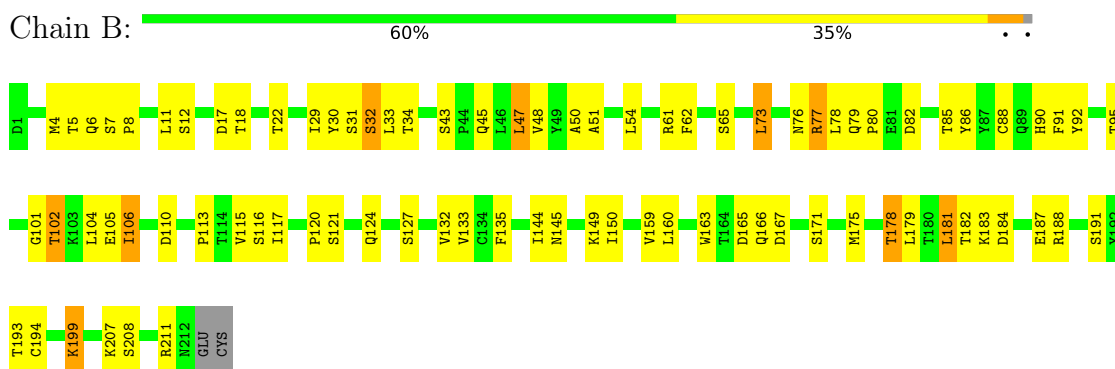
3 Residue-property plots [i](#)

These plots are drawn for all protein, RNA, DNA and oligosaccharide chains in the entry. The first graphic for a chain summarises the proportions of the various outlier classes displayed in the second graphic. The second graphic shows the sequence view annotated by issues in geometry. Residues are color-coded according to the number of geometric quality criteria for which they contain at least one outlier: green = 0, yellow = 1, orange = 2 and red = 3 or more. Stretches of 2 or more consecutive residues without any outlier are shown as a green connector. Residues present in the sample, but not in the model, are shown in grey.

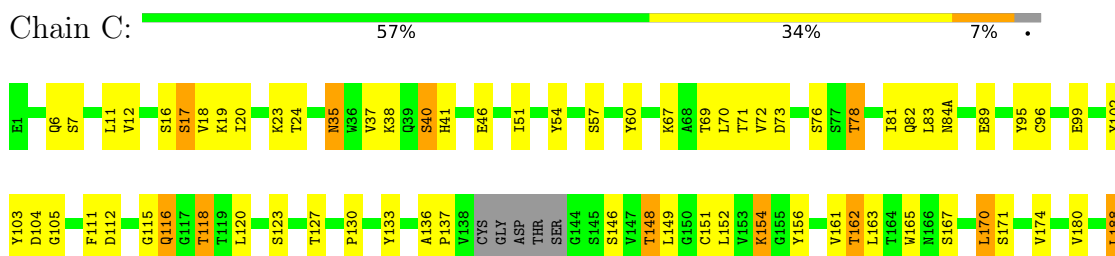
- Molecule 1: Adenosine receptor A2a

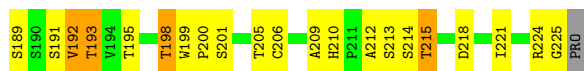


- Molecule 2: antibody fab fragment light chain



- Molecule 3: antibody fab fragment heavy chain





4 Data and refinement statistics

Property	Value	Source
Space group	C 1 2 1	Depositor
Cell constants a, b, c, α , β , γ	120.31Å 89.77Å 110.68Å 90.00° 96.14° 90.00°	Depositor
Resolution (Å)	20.00 – 3.10 71.80 – 2.62	Depositor EDS
% Data completeness (in resolution range)	88.4 (20.00-3.10) 74.4 (71.80-2.62)	Depositor EDS
R_{merge}	0.11	Depositor
R_{sym}	(Not available)	Depositor
$\langle I/\sigma(I) \rangle$ ¹	0.30 (at 2.62Å)	Xtrriage
Refinement program	PHENIX (phenix.refine: 1.7.1_743)	Depositor
R, R_{free}	0.196 , 0.263 0.205 , 0.269	Depositor DCC
R_{free} test set	1595 reflections (5.09%)	wwPDB-VP
Wilson B-factor (Å ²)	51.8	Xtrriage
Anisotropy	0.374	Xtrriage
Bulk solvent k_{sol} (e/Å ³), B_{sol} (Å ²)	0.29 , 56.7	EDS
L-test for twinning ²	$\langle L \rangle = 0.48$, $\langle L^2 \rangle = 0.31$	Xtrriage
Estimated twinning fraction	No twinning to report.	Xtrriage
F_o, F_c correlation	0.88	EDS
Total number of atoms	5635	wwPDB-VP
Average B, all atoms (Å ²)	87.0	wwPDB-VP

Xtrriage's analysis on translational NCS is as follows: *The largest off-origin peak in the Patterson function is 4.97% of the height of the origin peak. No significant pseudotranslation is detected.*

¹Intensities estimated from amplitudes.

²Theoretical values of $\langle |L| \rangle$, $\langle L^2 \rangle$ for acentric reflections are 0.5, 0.333 respectively for untwinned datasets, and 0.375, 0.2 for perfectly twinned datasets.

5 Model quality

5.1 Standard geometry

Bond lengths and bond angles in the following residue types are not validated in this section: ZMA

The Z score for a bond length (or angle) is the number of standard deviations the observed value is removed from the expected value. A bond length (or angle) with $|Z| > 5$ is considered an outlier worth inspection. RMSZ is the root-mean-square of all Z scores of the bond lengths (or angles).

Mol	Chain	Bond lengths		Bond angles	
		RMSZ	# Z >5	RMSZ	# Z >5
1	A	0.36	0/2351	0.56	0/3208
2	B	0.48	0/1674	0.64	0/2275
3	C	0.48	0/1707	0.65	0/2328
All	All	0.44	0/5732	0.61	0/7811

There are no bond length outliers.

There are no bond angle outliers.

There are no chirality outliers.

There are no planarity outliers.

5.2 Too-close contacts

In the following table, the Non-H and H(model) columns list the number of non-hydrogen atoms and hydrogen atoms in the chain respectively. The H(added) column lists the number of hydrogen atoms added and optimized by MolProbity. The Clashes column lists the number of clashes within the asymmetric unit, whereas Symm-Clashes lists symmetry-related clashes.

Mol	Chain	Non-H	H(model)	H(added)	Clashes	Symm-Clashes
1	A	2295	0	2356	99	0
2	B	1635	0	1558	59	0
3	C	1666	0	1609	69	0
4	A	25	0	15	2	0
5	A	2	0	0	1	0
5	B	5	0	0	0	0
5	C	7	0	0	0	0
All	All	5635	0	5538	217	0

The all-atom clashscore is defined as the number of clashes found per 1000 atoms (including hydrogen atoms). The all-atom clashscore for this structure is 19.

All (217) close contacts within the same asymmetric unit are listed below, sorted by their clash magnitude.

Atom-1	Atom-2	Interatomic distance (Å)	Clash overlap (Å)
3:C:6:GLN:HE21	3:C:115:GLY:HA3	1.32	0.94
2:B:77:ARG:HB3	2:B:77:ARG:CZ	2.02	0.90
1:A:243:ALA:O	1:A:247:LEU:HB2	1.72	0.89
2:B:8:PRO:O	2:B:102:THR:HB	1.77	0.84
1:A:143:TRP:CD1	1:A:173:PRO:HG3	2.13	0.84
2:B:31:SER:O	2:B:32:SER:HB2	1.78	0.83
3:C:148:THR:HG22	3:C:193:THR:HB	1.60	0.82
1:A:259:CYS:C	1:A:261:ASP:H	1.83	0.81
3:C:174:VAL:HG22	3:C:192:VAL:HG13	1.62	0.80
2:B:133:VAL:HG22	2:B:178:THR:HB	1.64	0.80
1:A:248:PRO:HG2	1:A:276:LEU:HD21	1.63	0.79
1:A:167:LEU:O	1:A:171:VAL:HG22	1.84	0.77
3:C:162:THR:HG23	3:C:209:ALA:HB3	1.69	0.73
1:A:238:ILE:HD11	1:A:288:TYR:CE1	2.26	0.70
3:C:170:LEU:HD13	3:C:192:VAL:HG11	1.74	0.69
1:A:218:GLY:HA2	1:A:219:GLU:C	2.13	0.69
3:C:103:TYR:CZ	3:C:105:GLY:HA2	2.28	0.68
2:B:48:VAL:HG22	2:B:54:LEU:HD23	1.75	0.68
2:B:31:SER:O	2:B:32:SER:CB	2.42	0.67
1:A:298:THR:O	1:A:302:ILE:HG13	1.95	0.67
2:B:193:THR:HG23	2:B:208:SER:HB2	1.78	0.66
2:B:77:ARG:HB3	2:B:77:ARG:NH1	2.11	0.65
1:A:257:PHE:O	1:A:260:PRO:HD3	1.97	0.65
2:B:135:PHE:CE2	3:C:191:SER:HB3	2.31	0.65
1:A:18:VAL:HA	1:A:21:ILE:HD12	1.78	0.65
1:A:238:ILE:HD11	1:A:288:TYR:HE1	1.61	0.65
3:C:148:THR:HA	3:C:193:THR:HA	1.79	0.64
3:C:6:GLN:OE1	3:C:118:THR:HG22	1.98	0.63
2:B:160:LEU:HD13	3:C:180:VAL:HG11	1.79	0.63
2:B:45:GLN:OE1	2:B:45:GLN:HA	1.99	0.63
2:B:29:ILE:O	2:B:31:SER:O	2.16	0.62
2:B:33:LEU:HD21	2:B:88:CYS:HB2	1.80	0.62
1:A:173:PRO:HG2	1:A:176:TYR:HB3	1.81	0.62
2:B:150:ILE:HD11	2:B:179:LEU:HD21	1.81	0.62
3:C:156:TYR:CE2	3:C:161:VAL:HG13	2.35	0.61
1:A:188:VAL:HB	1:A:189:PRO:HD3	1.82	0.61
1:A:143:TRP:HD1	1:A:143:TRP:O	1.85	0.60
1:A:234:SER:OG	1:A:291:ARG:HB3	2.02	0.60
3:C:67:LYS:HE2	3:C:84(A):ASN:O	2.00	0.60
1:A:10:ILE:HA	1:A:64:ILE:HD11	1.85	0.59

Continued on next page...

Continued from previous page...

Atom-1	Atom-2	Interatomic distance (Å)	Clash overlap (Å)
3:C:6:GLN:HE21	3:C:115:GLY:CA	2.11	0.59
3:C:136:ALA:O	3:C:224:ARG:NH1	2.35	0.59
3:C:60:TYR:HE1	3:C:70:LEU:HG	1.68	0.58
1:A:29:TRP:HZ2	1:A:306:HIS:CD2	2.21	0.58
2:B:183:LYS:O	2:B:187:GLU:HG3	2.04	0.58
2:B:79:GLN:HB3	2:B:80:PRO:HD2	1.86	0.58
2:B:163:TRP:CD1	2:B:163:TRP:N	2.70	0.58
1:A:10:ILE:HG23	1:A:64:ILE:CD1	2.34	0.57
1:A:246:TRP:HZ3	1:A:249:LEU:HD13	1.69	0.57
2:B:79:GLN:HE21	2:B:80:PRO:HD2	1.69	0.57
1:A:10:ILE:HG23	1:A:64:ILE:HD11	1.86	0.57
2:B:33:LEU:C	2:B:33:LEU:HD13	2.25	0.57
1:A:93:PHE:HB3	1:A:128:CYS:SG	2.45	0.56
1:A:96:LEU:CD1	1:A:193:MET:HG3	2.35	0.56
3:C:210:HIS:CE1	3:C:212:ALA:HB3	2.40	0.56
1:A:190:LEU:HD23	1:A:193:MET:HE3	1.86	0.56
1:A:13:GLU:CG	1:A:60:ILE:HG23	2.36	0.56
1:A:147:GLY:O	1:A:148:GLN:HG3	2.05	0.56
2:B:124:GLN:O	2:B:127:SER:HB3	2.05	0.56
1:A:171:VAL:HG23	1:A:172:VAL:HG23	1.88	0.56
1:A:259:CYS:C	1:A:261:ASP:N	2.54	0.55
2:B:8:PRO:HG3	2:B:11:LEU:HD23	1.88	0.55
1:A:143:TRP:CD1	1:A:143:TRP:O	2.60	0.55
1:A:29:TRP:CZ2	1:A:306:HIS:CD2	2.95	0.55
1:A:137:LEU:HB3	1:A:140:MET:HE2	1.88	0.54
1:A:249:LEU:O	1:A:249:LEU:HD23	2.08	0.54
3:C:163:LEU:C	3:C:163:LEU:HD23	2.28	0.54
1:A:174:MET:CE	1:A:257:PHE:HB2	2.38	0.54
3:C:210:HIS:HD2	3:C:213:SER:OG	1.91	0.53
2:B:48:VAL:CG2	2:B:54:LEU:HD23	2.38	0.53
3:C:18:VAL:O	3:C:82:GLN:HA	2.09	0.53
1:A:178:VAL:HG21	1:A:257:PHE:CB	2.38	0.53
2:B:149:LYS:HB2	2:B:193:THR:HB	1.89	0.53
1:A:49:ALA:O	1:A:53:ILE:HG13	2.08	0.53
1:A:289:ALA:O	1:A:296:ARG:HD3	2.08	0.53
3:C:72:VAL:CG1	3:C:73:ASP:N	2.72	0.52
2:B:117:ILE:HG22	2:B:207:LYS:HB3	1.91	0.52
2:B:181:LEU:N	2:B:181:LEU:HD12	2.25	0.52
2:B:167:ASP:O	2:B:171:SER:HA	2.10	0.52
3:C:37:VAL:HG13	3:C:46:GLU:O	2.09	0.52
1:A:54:ALA:HB3	1:A:87:LEU:HD11	1.91	0.52

Continued on next page...

Continued from previous page...

Atom-1	Atom-2	Interatomic distance (Å)	Clash overlap (Å)
1:A:123:GLY:O	1:A:127:ILE:HG13	2.10	0.52
3:C:148:THR:CG2	3:C:193:THR:HB	2.34	0.51
2:B:17:ASP:O	2:B:78:LEU:HB2	2.09	0.51
2:B:61:ARG:NH2	2:B:82:ASP:OD1	2.34	0.51
2:B:160:LEU:HD13	3:C:180:VAL:CG1	2.40	0.51
3:C:188:LEU:HG	3:C:189:SER:N	2.25	0.51
3:C:137:PRO:O	3:C:224:ARG:HD2	2.11	0.51
3:C:161:VAL:HG12	3:C:210:HIS:HB2	1.92	0.51
3:C:12:VAL:HG13	3:C:16:SER:OG	2.09	0.51
2:B:106:ILE:HD12	2:B:166:GLN:OE1	2.10	0.51
2:B:120:PRO:HD3	2:B:132:VAL:HG22	1.92	0.51
3:C:130:PRO:HB3	3:C:156:TYR:HB3	1.93	0.50
1:A:246:TRP:CZ3	1:A:249:LEU:HD13	2.46	0.50
2:B:76:ASN:O	2:B:77:ARG:C	2.50	0.50
3:C:224:ARG:O	3:C:225:GLY:C	2.49	0.50
1:A:13:GLU:HG3	1:A:60:ILE:HG23	1.93	0.50
1:A:143:TRP:HD1	1:A:173:PRO:HG3	1.74	0.50
3:C:17:SER:HA	3:C:83:LEU:O	2.12	0.49
3:C:35:ASN:HD21	3:C:99:GLU:HB2	1.78	0.49
3:C:51:ILE:HD13	3:C:72:VAL:HG23	1.93	0.49
3:C:213:SER:OG	3:C:215:THR:HG23	2.13	0.49
2:B:110:ASP:OD2	2:B:199:LYS:HD2	2.13	0.49
1:A:54:ALA:HB3	1:A:87:LEU:CD1	2.42	0.49
1:A:98:ILE:O	1:A:101:ASP:HB3	2.13	0.49
1:A:143:TRP:CE2	1:A:176:TYR:HB2	2.48	0.49
1:A:63:ALA:O	1:A:66:ILE:HG22	2.13	0.49
1:A:131:LEU:O	1:A:135:ILE:HB	2.13	0.49
1:A:77:CYS:HA	1:A:80:ILE:HD12	1.94	0.48
3:C:40:SER:O	3:C:41:HIS:CD2	2.66	0.48
1:A:54:ALA:CB	1:A:87:LEU:HD11	2.43	0.48
1:A:177:MET:HE1	4:A:401:ZMA:C21	2.44	0.48
3:C:149:LEU:HD22	3:C:221:ILE:HG21	1.95	0.48
1:A:85:LEU:CD2	4:A:401:ZMA:H23	2.44	0.48
3:C:72:VAL:HG12	3:C:73:ASP:N	2.29	0.48
3:C:206:CYS:O	3:C:218:ASP:HA	2.14	0.48
1:A:145:ASN:HB3	1:A:170:ASP:O	2.14	0.47
1:A:179:TYR:O	1:A:183:PHE:HB2	2.13	0.47
3:C:195:THR:OG1	3:C:198:THR:CG2	2.62	0.47
1:A:174:MET:HE2	1:A:257:PHE:HB2	1.96	0.47
2:B:124:GLN:HG3	3:C:133:TYR:CZ	2.49	0.47
3:C:60:TYR:CE1	3:C:70:LEU:HG	2.49	0.47

Continued on next page...

Continued from previous page...

Atom-1	Atom-2	Interatomic distance (Å)	Clash overlap (Å)
1:A:96:LEU:HD13	1:A:193:MET:HG3	1.96	0.47
2:B:159:VAL:O	2:B:160:LEU:HD23	2.15	0.47
1:A:13:GLU:HG2	1:A:60:ILE:HG23	1.96	0.47
3:C:35:ASN:ND2	3:C:99:GLU:HB2	2.30	0.47
1:A:113:ASN:HB2	5:A:328:HOH:O	2.14	0.47
2:B:91:PHE:HE1	3:C:111:PHE:CE1	2.33	0.47
1:A:71:CYS:HB3	1:A:163:GLN:HB3	1.97	0.46
1:A:139:PRO:HA	1:A:143:TRP:HB3	1.97	0.46
1:A:125:ILE:O	1:A:129:TRP:HD1	1.99	0.46
1:A:259:CYS:O	1:A:261:ASP:N	2.48	0.46
1:A:269:LEU:O	1:A:272:LEU:HB3	2.15	0.46
2:B:79:GLN:NE2	2:B:80:PRO:HD2	2.30	0.46
1:A:96:LEU:HD12	1:A:193:MET:HG3	1.98	0.46
3:C:188:LEU:HG	3:C:189:SER:H	1.81	0.46
2:B:12:SER:HA	2:B:105:GLU:O	2.15	0.46
3:C:12:VAL:CG1	3:C:16:SER:OG	2.64	0.46
1:A:92:ILE:HD11	1:A:242:PHE:CZ	2.51	0.46
3:C:195:THR:O	3:C:198:THR:HG23	2.16	0.45
1:A:121:ALA:O	1:A:125:ILE:HG13	2.16	0.45
3:C:221:ILE:HD12	3:C:221:ILE:N	2.31	0.45
3:C:195:THR:OG1	3:C:198:THR:HG23	2.16	0.45
3:C:210:HIS:CD2	3:C:213:SER:OG	2.70	0.45
1:A:79:PHE:HD2	1:A:79:PHE:O	2.00	0.45
3:C:20:ILE:HB	3:C:81:ILE:CG2	2.47	0.45
3:C:165:TRP:CE2	3:C:192:VAL:HG22	2.52	0.45
2:B:121:SER:OG	3:C:133:TYR:HB3	2.17	0.44
1:A:21:ILE:HG23	1:A:53:ILE:HG23	1.98	0.44
1:A:227:LYS:HD3	1:A:227:LYS:HA	1.82	0.44
1:A:248:PRO:CG	1:A:276:LEU:HD21	2.43	0.44
2:B:199:LYS:HE2	2:B:199:LYS:HB2	1.78	0.44
1:A:79:PHE:O	1:A:79:PHE:CD2	2.70	0.44
2:B:86:TYR:O	2:B:101:GLY:HA2	2.17	0.44
1:A:79:PHE:CD2	1:A:79:PHE:C	2.91	0.44
3:C:137:PRO:HD2	3:C:199:TRP:CH2	2.52	0.44
1:A:187:LEU:HD13	1:A:191:LEU:HD13	2.00	0.44
1:A:269:LEU:HD13	1:A:269:LEU:HA	1.83	0.44
3:C:81:ILE:HG23	3:C:81:ILE:O	2.17	0.44
1:A:304:ARG:HG3	1:A:304:ARG:O	2.17	0.44
1:A:34:ASN:HB3	1:A:37:LEU:HD12	1.98	0.44
1:A:209:LYS:O	1:A:209:LYS:HD3	2.18	0.44
2:B:43:SER:HB3	3:C:95:TYR:HE1	1.83	0.44

Continued on next page...

Continued from previous page...

Atom-1	Atom-2	Interatomic distance (Å)	Clash overlap (Å)
1:A:25:VAL:HG23	1:A:53:ILE:HD13	2.00	0.43
2:B:47:LEU:HD11	2:B:62:PHE:CE1	2.53	0.43
2:B:115:VAL:HG12	2:B:207:LYS:HG3	2.00	0.43
2:B:135:PHE:CE2	3:C:191:SER:CB	3.01	0.43
2:B:113:PRO:HG3	2:B:144:ILE:HD11	2.00	0.43
1:A:247:LEU:HA	1:A:247:LEU:HD12	1.80	0.43
3:C:76:SER:OG	3:C:78:THR:HG23	2.19	0.43
2:B:6:GLN:NE2	2:B:102:THR:HG23	2.33	0.43
2:B:11:LEU:HB3	2:B:104:LEU:HD12	2.00	0.43
2:B:4:MET:HE2	2:B:33:LEU:HD23	1.99	0.43
1:A:12:VAL:O	1:A:16:ILE:HD13	2.19	0.43
1:A:70:PHE:CD1	1:A:70:PHE:C	2.92	0.43
3:C:20:ILE:HG21	3:C:118:THR:HG21	2.00	0.43
2:B:124:GLN:HG3	3:C:133:TYR:CE1	2.54	0.43
3:C:116:GLN:H	3:C:116:GLN:HG3	1.36	0.43
1:A:215:PRO:O	1:A:216:LEU:HB3	2.19	0.43
2:B:30:TYR:HE2	2:B:92:TYR:CE1	2.37	0.43
2:B:47:LEU:HD12	2:B:73:LEU:HD11	2.01	0.42
3:C:151:CYS:HB2	3:C:165:TRP:CH2	2.54	0.42
1:A:100:ILE:O	1:A:104:ILE:HG13	2.19	0.42
3:C:149:LEU:N	3:C:192:VAL:O	2.50	0.42
3:C:199:TRP:CG	3:C:200:PRO:HA	2.54	0.42
1:A:59:ALA:HA	1:A:62:PHE:HB2	2.01	0.42
2:B:34:THR:O	2:B:88:CYS:HA	2.18	0.42
3:C:20:ILE:CG2	3:C:118:THR:HG21	2.49	0.42
3:C:23:LYS:HG3	3:C:78:THR:HG22	2.01	0.42
1:A:88:THR:O	1:A:91:SER:HB2	2.20	0.42
1:A:156:SER:O	1:A:156:SER:OG	2.35	0.42
1:A:138:THR:O	1:A:141:LEU:N	2.52	0.41
1:A:265:ALA:HA	1:A:266:PRO:HD3	1.67	0.41
1:A:272:LEU:HD23	1:A:272:LEU:O	2.20	0.41
2:B:47:LEU:HD11	2:B:62:PHE:CD1	2.55	0.41
1:A:34:ASN:OD1	1:A:36:ASN:N	2.49	0.41
1:A:202:LEU:HD22	1:A:205:ARG:NH2	2.35	0.41
1:A:17:ALA:O	1:A:21:ILE:HG13	2.20	0.41
1:A:228:GLU:CG	3:C:102:TYR:HB2	2.51	0.41
2:B:50:ALA:O	2:B:51:ALA:HB3	2.20	0.41
1:A:178:VAL:HG21	1:A:257:PHE:HB3	2.02	0.41
1:A:190:LEU:HD23	1:A:193:MET:CE	2.50	0.41
2:B:32:SER:O	2:B:90:HIS:HA	2.21	0.41
3:C:37:VAL:HG12	3:C:38:LYS:N	2.36	0.41

Continued on next page...

Continued from previous page...

Atom-1	Atom-2	Interatomic distance (Å)	Clash overlap (Å)
1:A:178:VAL:HG21	1:A:257:PHE:CG	2.56	0.41
2:B:6:GLN:HE21	2:B:102:THR:CG2	2.33	0.41
1:A:96:LEU:O	1:A:100:ILE:HD12	2.20	0.41
1:A:29:TRP:HZ2	1:A:306:HIS:HD2	1.67	0.41
1:A:225:LEU:O	1:A:228:GLU:N	2.53	0.41
1:A:290:TYR:CD1	1:A:291:ARG:HG2	2.55	0.41
2:B:61:ARG:HH21	2:B:82:ASP:CG	2.20	0.41
3:C:6:GLN:NE2	3:C:96:CYS:H	2.18	0.41
3:C:137:PRO:HD3	3:C:149:LEU:HD23	2.02	0.41
3:C:154:LYS:HE2	3:C:154:LYS:HB2	1.78	0.41
1:A:187:LEU:O	1:A:191:LEU:HD13	2.21	0.40
2:B:182:THR:O	2:B:183:LYS:C	2.57	0.40
1:A:178:VAL:O	1:A:182:PHE:HB3	2.21	0.40

There are no symmetry-related clashes.

5.3 Torsion angles [i](#)

5.3.1 Protein backbone [i](#)

In the following table, the Percentiles column shows the percent Ramachandran outliers of the chain as a percentile score with respect to all X-ray entries followed by that with respect to entries of similar resolution.

The Analysed column shows the number of residues for which the backbone conformation was analysed, and the total number of residues.

Mol	Chain	Analysed	Favoured	Allowed	Outliers	Percentiles	
1	A	292/326 (90%)	266 (91%)	26 (9%)	0	100	100
2	B	210/214 (98%)	201 (96%)	8 (4%)	1 (0%)	29	64
3	C	216/226 (96%)	209 (97%)	7 (3%)	0	100	100
All	All	718/766 (94%)	676 (94%)	41 (6%)	1 (0%)	51	83

All (1) Ramachandran outliers are listed below:

Mol	Chain	Res	Type
2	B	32	SER

5.3.2 Protein sidechains

In the following table, the Percentiles column shows the percent sidechain outliers of the chain as a percentile score with respect to all X-ray entries followed by that with respect to entries of similar resolution.

The Analysed column shows the number of residues for which the sidechain conformation was analysed, and the total number of residues.

Mol	Chain	Analysed	Rotameric	Outliers	Percentiles	
1	A	247/276 (90%)	220 (89%)	27 (11%)	6	25
2	B	183/186 (98%)	159 (87%)	24 (13%)	4	17
3	C	189/195 (97%)	153 (81%)	36 (19%)	1	6
All	All	619/657 (94%)	532 (86%)	87 (14%)	3	15

All (87) residues with a non-rotameric sidechain are listed below:

Mol	Chain	Res	Type
1	A	13	GLU
1	A	14	LEU
1	A	19	LEU
1	A	21	ILE
1	A	33	LEU
1	A	64	ILE
1	A	70	PHE
1	A	78	LEU
1	A	79	PHE
1	A	80	ILE
1	A	90	SER
1	A	107	ARG
1	A	146	CYS
1	A	161	GLU
1	A	168	PHE
1	A	176	TYR
1	A	212	GLU
1	A	216	LEU
1	A	224	THR
1	A	225	LEU
1	A	234	SER
1	A	251	ILE
1	A	252	ILE
1	A	259	CYS
1	A	269	LEU
1	A	276	LEU

Continued on next page...

Continued from previous page...

Mol	Chain	Res	Type
1	A	291	ARG
2	B	5	THR
2	B	7	SER
2	B	18	THR
2	B	22	THR
2	B	47	LEU
2	B	65	SER
2	B	73	LEU
2	B	77	ARG
2	B	85	THR
2	B	95	THR
2	B	102	THR
2	B	106	ILE
2	B	116	SER
2	B	145	ASN
2	B	165	ASP
2	B	175	MET
2	B	178	THR
2	B	181	LEU
2	B	184	ASP
2	B	188	ARG
2	B	191	SER
2	B	194	CYS
2	B	199	LYS
2	B	211	ARG
3	C	7	SER
3	C	11	LEU
3	C	17	SER
3	C	19	LYS
3	C	24	THR
3	C	35	ASN
3	C	40	SER
3	C	54	TYR
3	C	57	SER
3	C	69	THR
3	C	71	THR
3	C	78	THR
3	C	89	GLU
3	C	104	ASP
3	C	112	ASP
3	C	116	GLN
3	C	118	THR

Continued on next page...

Continued from previous page...

Mol	Chain	Res	Type
3	C	120	LEU
3	C	123	SER
3	C	127	THR
3	C	146	SER
3	C	148	THR
3	C	152	LEU
3	C	154	LYS
3	C	162	THR
3	C	167	SER
3	C	170	LEU
3	C	171	SER
3	C	188	LEU
3	C	192	VAL
3	C	193	THR
3	C	198	THR
3	C	201	SER
3	C	205	THR
3	C	214	SER
3	C	215	THR

Sometimes sidechains can be flipped to improve hydrogen bonding and reduce clashes. All (5) such sidechains are listed below:

Mol	Chain	Res	Type
1	A	226	GLN
2	B	79	GLN
3	C	6	GLN
3	C	41	HIS
3	C	210	HIS

5.3.3 RNA [i](#)

There are no RNA molecules in this entry.

5.4 Non-standard residues in protein, DNA, RNA chains [i](#)

There are no non-standard protein/DNA/RNA residues in this entry.

5.5 Carbohydrates [i](#)

There are no monosaccharides in this entry.

5.6 Ligand geometry

1 ligand is modelled in this entry.

In the following table, the Counts columns list the number of bonds (or angles) for which Mogul statistics could be retrieved, the number of bonds (or angles) that are observed in the model and the number of bonds (or angles) that are defined in the Chemical Component Dictionary. The Link column lists molecule types, if any, to which the group is linked. The Z score for a bond length (or angle) is the number of standard deviations the observed value is removed from the expected value. A bond length (or angle) with $|Z| > 2$ is considered an outlier worth inspection. RMSZ is the root-mean-square of all Z scores of the bond lengths (or angles).

Mol	Type	Chain	Res	Link	Bond lengths			Bond angles		
					Counts	RMSZ	# Z > 2	Counts	RMSZ	# Z > 2
4	ZMA	A	401	-	21,28,28	1.95	3 (14%)	20,39,39	1.89	6 (30%)

In the following table, the Chirals column lists the number of chiral outliers, the number of chiral centers analysed, the number of these observed in the model and the number defined in the Chemical Component Dictionary. Similar counts are reported in the Torsion and Rings columns. '-' means no outliers of that kind were identified.

Mol	Type	Chain	Res	Link	Chirals	Torsions	Rings
4	ZMA	A	401	-	-	2/6/10/10	0/4/4/4

All (3) bond length outliers are listed below:

Mol	Chain	Res	Type	Atoms	Z	Observed(Å)	Ideal(Å)
4	A	401	ZMA	C11-N10	5.80	1.43	1.34
4	A	401	ZMA	C14-N15	4.63	1.43	1.34
4	A	401	ZMA	C18-N19	3.97	1.41	1.35

All (6) bond angle outliers are listed below:

Mol	Chain	Res	Type	Atoms	Z	Observed(°)	Ideal(°)
4	A	401	ZMA	N15-C14-N16	3.94	120.62	117.97
4	A	401	ZMA	N12-C11-N13	-3.76	120.28	126.23
4	A	401	ZMA	C8-C9-N10	3.72	117.98	111.75
4	A	401	ZMA	C9-N10-C11	-2.46	119.49	123.75
4	A	401	ZMA	N10-C11-N12	2.22	121.02	117.19
4	A	401	ZMA	N15-C14-N13	2.14	119.85	117.03

There are no chirality outliers.

All (2) torsion outliers are listed below:

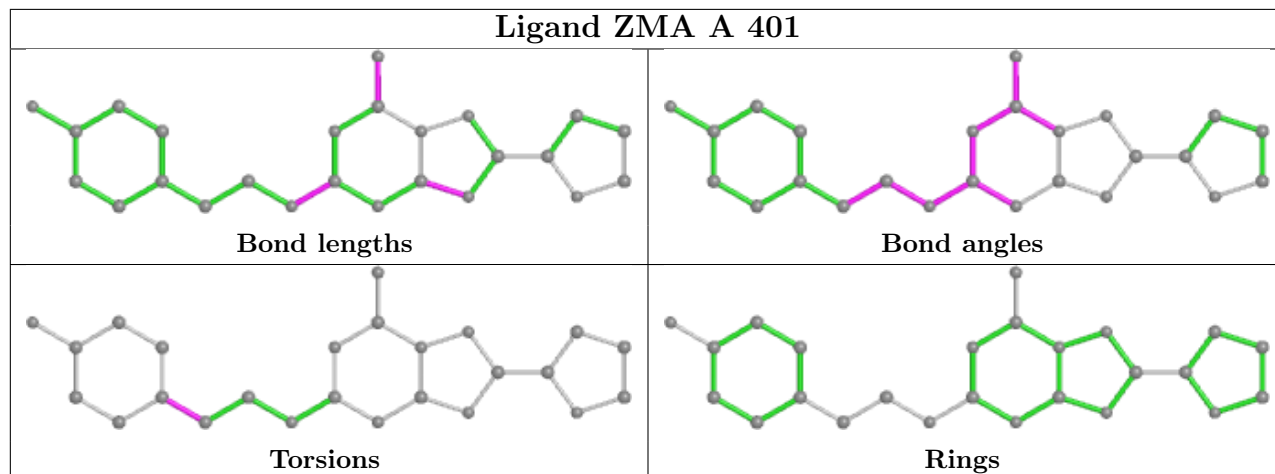
Mol	Chain	Res	Type	Atoms
4	A	401	ZMA	C1-C7-C8-C9
4	A	401	ZMA	C6-C7-C8-C9

There are no ring outliers.

1 monomer is involved in 2 short contacts:

Mol	Chain	Res	Type	Clashes	Symm-Clashes
4	A	401	ZMA	2	0

The following is a two-dimensional graphical depiction of Mogul quality analysis of bond lengths, bond angles, torsion angles, and ring geometry for all instances of the Ligand of Interest. In addition, ligands with molecular weight > 250 and outliers as shown on the validation Tables will also be included. For torsion angles, if less than 5% of the Mogul distribution of torsion angles is within 10 degrees of the torsion angle in question, then that torsion angle is considered an outlier. Any bond that is central to one or more torsion angles identified as an outlier by Mogul will be highlighted in the graph. For rings, the root-mean-square deviation (RMSD) between the ring in question and similar rings identified by Mogul is calculated over all ring torsion angles. If the average RMSD is greater than 60 degrees and the minimal RMSD between the ring in question and any Mogul-identified rings is also greater than 60 degrees, then that ring is considered an outlier. The outliers are highlighted in purple. The color gray indicates Mogul did not find sufficient equivalents in the CSD to analyse the geometry.



5.7 Other polymers [\(i\)](#)

There are no such residues in this entry.

5.8 Polymer linkage issues [\(i\)](#)

There are no chain breaks in this entry.

6 Fit of model and data [i](#)

6.1 Protein, DNA and RNA chains [i](#)

Unable to reproduce the depositors R factor - this section is therefore empty.

6.2 Non-standard residues in protein, DNA, RNA chains [i](#)

Unable to reproduce the depositors R factor - this section is therefore empty.

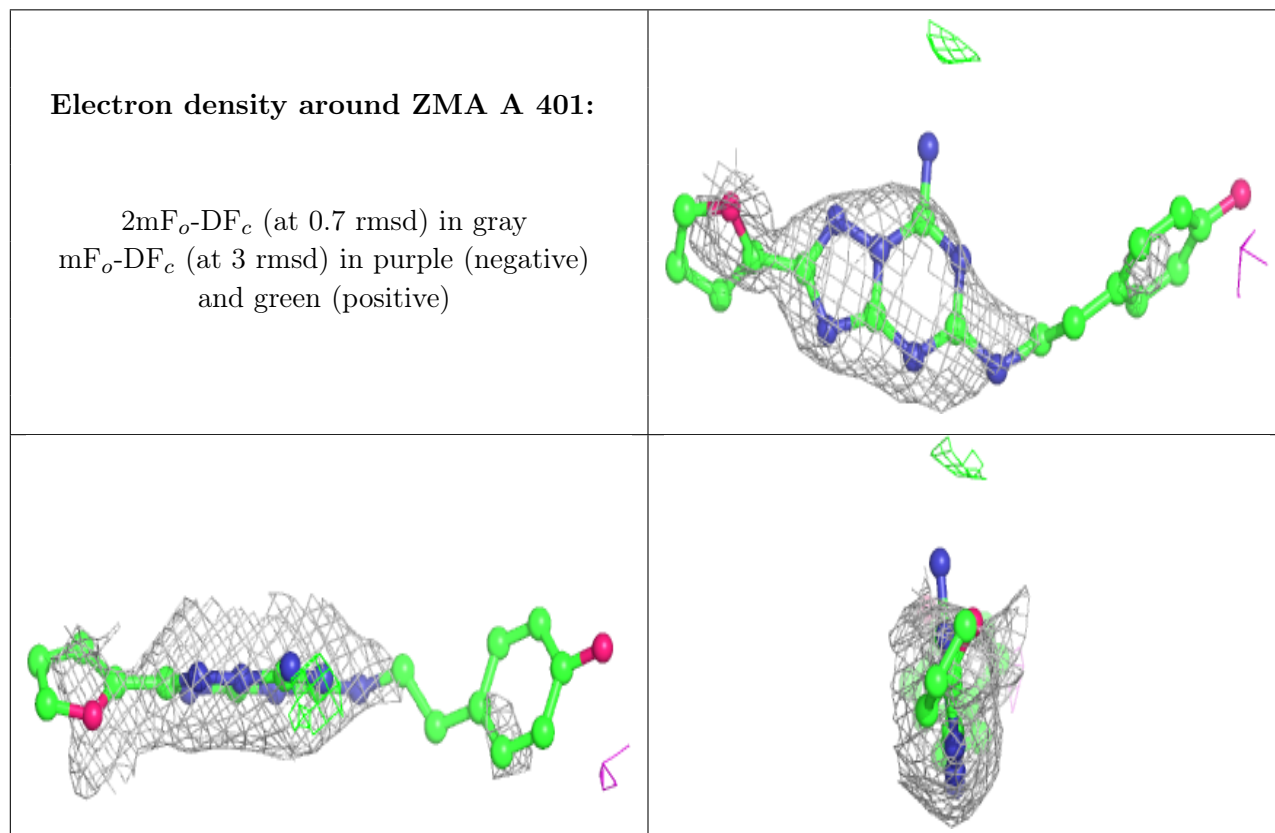
6.3 Carbohydrates [i](#)

Unable to reproduce the depositors R factor - this section is therefore empty.

6.4 Ligands [i](#)

Unable to reproduce the depositors R factor - this section is therefore empty.

The following is a graphical depiction of the model fit to experimental electron density of all instances of the Ligand of Interest. In addition, ligands with molecular weight > 250 and outliers as shown on the geometry validation Tables will also be included. Each fit is shown from different orientation to approximate a three-dimensional view.



6.5 Other polymers

Unable to reproduce the depositors R factor - this section is therefore empty.