



wwPDB NMR Structure Validation Summary Report ⓘ

Jun 6, 2020 – 07:09 am BST

PDB ID : 6VA2
Title : Solution Structure of the Tau pre-mRNA Exon 10 Splicing Regulatory Element Bound to MH5
Authors : Chen, J.L.; Fountain, M.A.; Disney, M.D.
Deposited on : 2019-12-16

This is a wwPDB NMR Structure Validation Summary Report for a publicly released PDB entry.

We welcome your comments at validation@mail.wwpdb.org

A user guide is available at

<https://www.wwpdb.org/validation/2017/NMRValidationReportHelp>

with specific help available everywhere you see the ⓘ symbol.

The following versions of software and data (see [references ⓘ](#)) were used in the production of this report:

Cyrange : Kirchner and Güntert (2011)
NmrClust : Kelley et al. (1996)
MolProbity : 4.02b-467
Mogul : 1.8.5 (274361), CSD as541be (2020)
buster-report : 1.1.7 (2018)
Percentile statistics : 20191225.v01 (using entries in the PDB archive December 25th 2019)
RCI : v_1n_11_5_13_A (Berjanski et al., 2005)
PANAV : Wang et al. (2010)
ShiftChecker : 2.11
Ideal geometry (proteins) : Engh & Huber (2001)
Ideal geometry (DNA, RNA) : Parkinson et al. (1996)
Validation Pipeline (wwPDB-VP) : 2.11

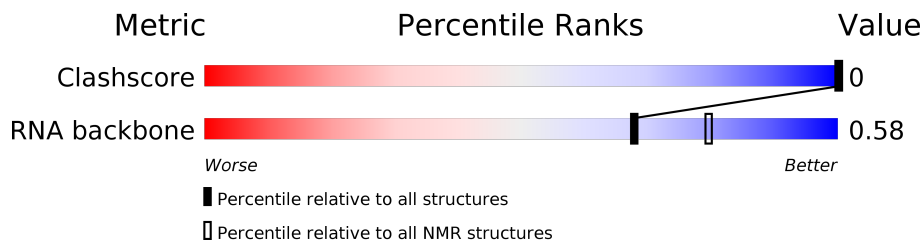
1 Overall quality at a glance

The following experimental techniques were used to determine the structure:

SOLUTION NMR

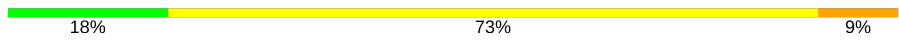

The overall completeness of chemical shifts assignment is 29%.

Percentile scores (ranging between 0-100) for global validation metrics of the entry are shown in the following graphic. The table shows the number of entries on which the scores are based.



Metric	Whole archive (#Entries)	NMR archive (#Entries)
Clashscore	158937	12864
RNA backbone	4643	676

The table below summarises the geometric issues observed across the polymeric chains and their fit to the experimental data. The red, orange, yellow and green segments indicate the fraction of residues that contain outliers for ≥ 3 , 2, 1 and 0 types of geometric quality criteria. A cyan segment indicates the fraction of residues that are not part of the well-defined cores, and a grey segment represents the fraction of residues that are not modelled. The numeric value for each fraction is indicated below the corresponding segment, with a dot representing fractions $\leq 5\%$

Mol	Chain	Length	Quality of chain
1	A	11	 18% 73% 9%
2	B	10	 70% 30%

2 Ensemble composition and analysis

This entry contains 20 models. This entry does not contain polypeptide chains, therefore identification of well-defined residues and clustering analysis are not possible. All residues are included in the validation scores.

3 Entry composition [i](#)

There are 3 unique types of molecules in this entry. The entry contains 729 atoms, of which 256 are hydrogens and 0 are deuteriums.

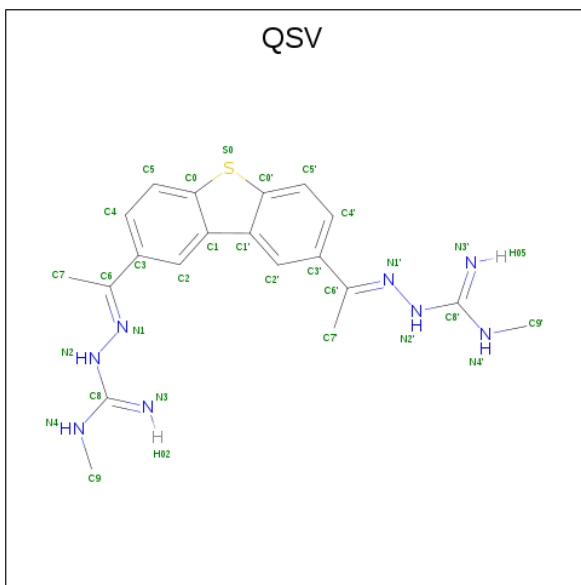
- Molecule 1 is a RNA chain called RNA (5'-R(*CP*CP*GP*GP*CP*AP*GP*UP*GP*UP*G)-3').

Mol	Chain	Residues	Atoms						Trace
			Total	C	H	N	O	P	
1	A	11	355	105	121	43	76	10	0

- Molecule 2 is a RNA chain called RNA (5'-R(*CP*AP*CP*AP*CP*GP*UP*CP*GP*G)-3').

Mol	Chain	Residues	Atoms						Trace
			Total	C	H	N	O	P	
2	B	10	321	95	111	39	67	9	0

- Molecule 3 is (2E,2'E)-2,2'-{dibenzo[b,d]thiene-2,8-diylidene}bis(N-methylhydrazine-1-carboximidamide) (three-letter code: QSV) (formula: C₂₀H₂₄N₈S) (labeled as "Ligand of Interest" by author).



Mol	Chain	Residues	Atoms				
			Total	C	H	N	S
3	A	1	53	20	24	8	1

4 Residue-property plots [i](#)

4.1 Average score per residue in the NMR ensemble

These plots are provided for all protein, RNA and DNA chains in the entry. The first graphic is the same as shown in the summary in section 1 of this report. The second graphic shows the sequence where residues are colour-coded according to the number of geometric quality criteria for which they contain at least one outlier: green = 0, yellow = 1, orange = 2 and red = 3 or more. Stretches of 2 or more consecutive residues without any outliers are shown as green connectors. Residues which are classified as ill-defined in the NMR ensemble, are shown in cyan with an underline colour-coded according to the previous scheme. Residues which were present in the experimental sample, but not modelled in the final structure are shown in grey.

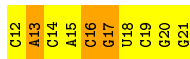
- Molecule 1: RNA (5'-R(*CP*CP*GP*GP*CP*AP*GP*UP*GP*UP*G)-3')

Chain A: 



- Molecule 2: RNA (5'-R(*CP*AP*CP*AP*CP*GP*UP*CP*GP*G)-3')

Chain B: 



4.2 Residue scores for the representative (author defined) model from the NMR ensemble


The representative model is number 1. Colouring as in section 4.1 above.

- Molecule 1: RNA (5'-R(*CP*CP*GP*GP*CP*AP*GP*UP*GP*UP*G)-3')

Chain A: 



- Molecule 2: RNA (5'-R(*CP*AP*CP*AP*CP*GP*UP*CP*GP*G)-3')

Chain B: 



5 Refinement protocol and experimental data overview (i)

The models were refined using the following method: *simulated annealing*.

Of the 100 calculated structures, 20 were deposited, based on the following criterion: *structures with the least restraint violations*.

The following table shows the software used for structure solution, optimisation and refinement.

Software name	Classification	Version
Amber	refinement	14
Amber	structure calculation	14

The following table shows chemical shift validation statistics as aggregates over all chemical shift files. Detailed validation can be found in section 6 of this report.

Chemical shift file(s)	input_cs.cif
Number of chemical shift lists	4
Total number of shifts	156
Number of shifts mapped to atoms	156
Number of unparsed shifts	0
Number of shifts with mapping errors	0
Number of shifts with mapping warnings	0
Assignment completeness (well-defined parts)	29%

No validations of the models with respect to experimental NMR restraints is performed at this time.

COVALENT-GEOMETRY INFOmissingINFO

5.1 Too-close contacts (i)

In the following table, the Non-H and H(model) columns list the number of non-hydrogen atoms and hydrogen atoms in each chain respectively. The H(added) column lists the number of hydrogen atoms added and optimized by MolProbity. The Clashes column lists the number of clashes averaged over the ensemble.

Mol	Chain	Non-H	H(model)	H(added)	Clashes
All	All	9460	5120	4638	-

The all-atom clashscore is defined as the number of clashes found per 1000 atoms (including hydrogen atoms). The all-atom clashscore for this structure is -.

There are no clashes.

5.2 Torsion angles [i](#)

5.2.1 Protein backbone [i](#)

There are no protein molecules in this entry.

5.2.2 Protein sidechains [i](#)

There are no protein molecules in this entry.

5.2.3 RNA [i](#)

Mol	Chain	Analysed	Backbone Outliers	Pucker Outliers	Suiteness
1	A	10/11 (91%)	2±1 (20±6%)	0±0 (2±4%)	0.56±0.07
2	B	9/10 (90%)	1±1 (7±9%)	0±0 (1±2%)	0.61±0.06
All	All	380/420 (90%)	54 (14%)	4 (1%)	0.58

The overall RNA backbone suiteness is 0.58.

5 of 9 unique RNA backbone outliers are listed below:

Mol	Chain	Res	Type	Models (Total)
1	A	6	A	20
1	A	7	G	15
2	B	17	G	9
1	A	4	G	3
2	B	18	U	3

All unique RNA pucker outliers are listed below:

Mol	Chain	Res	Type	Models (Total)
1	A	6	A	2
2	B	17	G	1
1	A	3	G	1

5.3 Non-standard residues in protein, DNA, RNA chains [i](#)

There are no non-standard protein/DNA/RNA residues in this entry.

5.4 Carbohydrates [i](#)

There are no carbohydrates in this entry.

LIGAND-GEOMETRY INFOmissingINFO

5.5 Other polymers [i](#)

There are no such molecules in this entry.

5.6 Polymer linkage issues [i](#)

There are no chain breaks in this entry.

6 Chemical shift validation [i](#)

The completeness of assignment taking into account all chemical shift lists is 29% for the well-defined parts and 29% for the entire structure.

6.1 Chemical shift list 1

File name: input_cs.cif

Chemical shift list name: *D2O*

6.1.1 Bookkeeping [i](#)

The following table shows the results of parsing the chemical shift list and reports the number of nuclei with statistically unusual chemical shifts.

Total number of shifts	105
Number of shifts mapped to atoms	105
Number of unparsed shifts	0
Number of shifts with mapping errors	0
Number of shifts with mapping warnings	0
Number of shift outliers (ShiftChecker)	0

6.1.2 Chemical shift referencing [i](#)

No chemical shift referencing corrections were calculated (not enough data).

6.1.3 Completeness of resonance assignments [i](#)

The following table shows the completeness of the chemical shift assignments for the well-defined regions of the structure. The overall completeness is 23%, i.e. 94 atoms were assigned a chemical shift out of a possible 401. 0 out of 0 assigned methyl groups (LEU and VAL) were assigned stereospecifically.

	Total	¹ H	¹³ C	¹⁵ N
Backbone	0/0 (—%)	0/0 (—%)	0/0 (—%)	0/0 (—%)
Sidechain	0/0 (—%)	0/0 (—%)	0/0 (—%)	0/0 (—%)
Aromatic	0/0 (—%)	0/0 (—%)	0/0 (—%)	0/0 (—%)
Overall	94/401 (23%)	94/233 (40%)	0/139 (0%)	0/29 (0%)

6.1.4 Statistically unusual chemical shifts [i](#)

There are no statistically unusual chemical shifts.

6.1.5 Random Coil Index (RCI) plots [i](#)

No *random coil index* (RCI) plot could be generated from the current chemical shift list (D2O). RCI is only applicable to proteins.

6.2 Chemical shift list 2

File name: input_cs.cif

Chemical shift list name: D2O_2

6.2.1 Bookkeeping [i](#)

The following table shows the results of parsing the chemical shift list and reports the number of nuclei with statistically unusual chemical shifts.

Total number of shifts	21
Number of shifts mapped to atoms	21
Number of unparsed shifts	0
Number of shifts with mapping errors	0
Number of shifts with mapping warnings	0
Number of shift outliers (ShiftChecker)	0

6.2.2 Chemical shift referencing [i](#)

No chemical shift referencing corrections were calculated (not enough data).

6.2.3 Completeness of resonance assignments [i](#)

The following table shows the completeness of the chemical shift assignments for the well-defined regions of the structure. The overall completeness is 5%, i.e. 19 atoms were assigned a chemical shift out of a possible 401. 0 out of 0 assigned methyl groups (LEU and VAL) were assigned stereospecifically.

	Total	¹ H	¹³ C	¹⁵ N
Backbone	0/0 (—%)	0/0 (—%)	0/0 (—%)	0/0 (—%)
Sidechain	0/0 (—%)	0/0 (—%)	0/0 (—%)	0/0 (—%)
Aromatic	0/0 (—%)	0/0 (—%)	0/0 (—%)	0/0 (—%)
Overall	19/401 (5%)	19/233 (8%)	0/139 (0%)	0/29 (0%)

6.2.4 Statistically unusual chemical shifts [i](#)

There are no statistically unusual chemical shifts.

6.2.5 Random Coil Index (RCI) plots [i](#)

No *random coil index* (RCI) plot could be generated from the current chemical shift list (D2O_2). RCI is only applicable to proteins.

6.3 Chemical shift list 3

File name: input_cs.cif

Chemical shift list name: *H2O*

6.3.1 Bookkeeping [i](#)

The following table shows the results of parsing the chemical shift list and reports the number of nuclei with statistically unusual chemical shifts.

Total number of shifts	23
Number of shifts mapped to atoms	23
Number of unparsed shifts	0
Number of shifts with mapping errors	0
Number of shifts with mapping warnings	0
Number of shift outliers (ShiftChecker)	0

6.3.2 Chemical shift referencing [i](#)

No chemical shift referencing corrections were calculated (not enough data).

6.3.3 Completeness of resonance assignments [i](#)

The following table shows the completeness of the chemical shift assignments for the well-defined regions of the structure. The overall completeness is 6%, i.e. 23 atoms were assigned a chemical shift out of a possible 401. 0 out of 0 assigned methyl groups (LEU and VAL) were assigned stereospecifically.

	Total	¹ H	¹³ C	¹⁵ N
Backbone	0/0 (—%)	0/0 (—%)	0/0 (—%)	0/0 (—%)
Sidechain	0/0 (—%)	0/0 (—%)	0/0 (—%)	0/0 (—%)
Aromatic	0/0 (—%)	0/0 (—%)	0/0 (—%)	0/0 (—%)
Overall	23/401 (6%)	23/233 (10%)	0/139 (0%)	0/29 (0%)

6.3.4 Statistically unusual chemical shifts [i](#)

There are no statistically unusual chemical shifts.

6.3.5 Random Coil Index (RCI) plots [i](#)

No *random coil index* (RCI) plot could be generated from the current chemical shift list (H2O). RCI is only applicable to proteins.

6.4 Chemical shift list 4

File name: input_cs.cif

Chemical shift list name: H2O_2

6.4.1 Bookkeeping [i](#)

The following table shows the results of parsing the chemical shift list and reports the number of nuclei with statistically unusual chemical shifts.

Total number of shifts	7
Number of shifts mapped to atoms	7
Number of unparsed shifts	0
Number of shifts with mapping errors	0
Number of shifts with mapping warnings	0
Number of shift outliers (ShiftChecker)	0

6.4.2 Chemical shift referencing [i](#)

No chemical shift referencing corrections were calculated (not enough data).

6.4.3 Completeness of resonance assignments [i](#)

The following table shows the completeness of the chemical shift assignments for the well-defined regions of the structure. The overall completeness is 2%, i.e. 7 atoms were assigned a chemical shift out of a possible 401. 0 out of 0 assigned methyl groups (LEU and VAL) were assigned stereospecifically.

	Total	¹ H	¹³ C	¹⁵ N
Backbone	0/0 (—%)	0/0 (—%)	0/0 (—%)	0/0 (—%)
Sidechain	0/0 (—%)	0/0 (—%)	0/0 (—%)	0/0 (—%)
Aromatic	0/0 (—%)	0/0 (—%)	0/0 (—%)	0/0 (—%)
Overall	7/401 (2%)	7/233 (3%)	0/139 (0%)	0/29 (0%)

6.4.4 Statistically unusual chemical shifts [i](#)

There are no statistically unusual chemical shifts.

6.4.5 Random Coil Index (RCI) plots

No *random coil index* (RCI) plot could be generated from the current chemical shift list (H2O_2). RCI is only applicable to proteins.