



# wwPDB X-ray Structure Validation Summary Report ⓘ

Oct 15, 2023 – 12:53 PM EDT

PDB ID : 1VA6  
Title : Crystal structure of Gamma-glutamylcysteine synthetase from Escherichia Coli B complexed with Transition-state analogue  
Authors : Hibi, T.; Nii, H.; Nakatsu, T.; Kato, H.; Hiratake, J.; Oda, J.  
Deposited on : 2004-02-12  
Resolution : 2.10 Å(reported)

This is a wwPDB X-ray Structure Validation Summary Report for a publicly released PDB entry.

We welcome your comments at [validation@mail.wwpdb.org](mailto:validation@mail.wwpdb.org)

A user guide is available at

<https://www.wwpdb.org/validation/2017/XrayValidationReportHelp>

with specific help available everywhere you see the ⓘ symbol.

The types of validation reports are described at

<http://www.wwpdb.org/validation/2017/FAQs#types>.

---

The following versions of software and data (see [references ⓘ](#)) were used in the production of this report:

MolProbity : 4.02b-467  
Mogul : 1.8.5 (274361), CSD as541be (2020)  
Xtriage (Phenix) : 1.13  
EDS : 2.36  
buster-report : 1.1.7 (2018)  
Percentile statistics : 20191225.v01 (using entries in the PDB archive December 25th 2019)  
Refmac : 5.8.0158  
CCP4 : 7.0.044 (Gargrove)  
Ideal geometry (proteins) : Engh & Huber (2001)  
Ideal geometry (DNA, RNA) : Parkinson et al. (1996)  
Validation Pipeline (wwPDB-VP) : 2.36

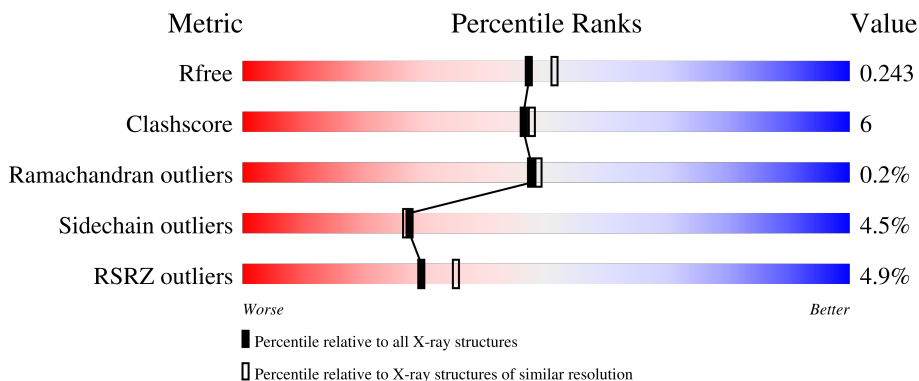
# 1 Overall quality at a glance

The following experimental techniques were used to determine the structure:

*X-RAY DIFFRACTION*

The reported resolution of this entry is 2.10 Å.

Percentile scores (ranging between 0-100) for global validation metrics of the entry are shown in the following graphic. The table shows the number of entries on which the scores are based.



Metric	Whole archive (#Entries)	Similar resolution (#Entries, resolution range(Å))
$R_{free}$	130704	5197 (2.10-2.10)
Clashscore	141614	5710 (2.10-2.10)
Ramachandran outliers	138981	5647 (2.10-2.10)
Sidechain outliers	138945	5648 (2.10-2.10)
RSRZ outliers	127900	5083 (2.10-2.10)

The table below summarises the geometric issues observed across the polymeric chains and their fit to the electron density. The red, orange, yellow and green segments of the lower bar indicate the fraction of residues that contain outliers for  $\geq 3$ , 2, 1 and 0 types of geometric quality criteria respectively. A grey segment represents the fraction of residues that are not modelled. The numeric value for each fraction is indicated below the corresponding segment, with a dot representing fractions  $\leq 5\%$ . The upper red bar (where present) indicates the fraction of residues that have poor fit to the electron density. The numeric value is given above the bar.

Mol	Chain	Length	Quality of chain
1	A	518	 4% 79% 17% ..
1	B	518	 6% 82% 14% ..

## 2 Entry composition

There are 6 unique types of molecules in this entry. The entry contains 8486 atoms, of which 0 are hydrogens and 0 are deuteriums.

In the tables below, the ZeroOcc column contains the number of atoms modelled with zero occupancy, the AltConf column contains the number of residues with at least one atom in alternate conformation and the Trace column contains the number of residues modelled with at most 2 atoms.

- Molecule 1 is a protein called Glutamate–cysteine ligase.

Mol	Chain	Residues	Atoms					ZeroOcc	AltConf	Trace
			Total	C	N	O	S			
1	A	507	4017	2549	685	765	18	0	0	0
1	B	503	3981	2528	679	756	18	0	0	0

There are 8 discrepancies between the modelled and reference sequences:

Chain	Residue	Modelled	Actual	Comment	Reference
A	106	SER	CYS	engineered mutation	UNP P0A6W9
A	164	SER	CYS	engineered mutation	UNP P0A6W9
A	205	SER	CYS	engineered mutation	UNP P0A6W9
A	223	SER	CYS	engineered mutation	UNP P0A6W9
B	106	SER	CYS	engineered mutation	UNP P0A6W9
B	164	SER	CYS	engineered mutation	UNP P0A6W9
B	205	SER	CYS	engineered mutation	UNP P0A6W9
B	223	SER	CYS	engineered mutation	UNP P0A6W9

- Molecule 2 is MAGNESIUM ION (three-letter code: MG) (formula: Mg).

Mol	Chain	Residues	Atoms		ZeroOcc	AltConf
2	A	4	Total	Mg	0	0
			4	4		
2	B	4	Total	Mg	0	0
			4	4		

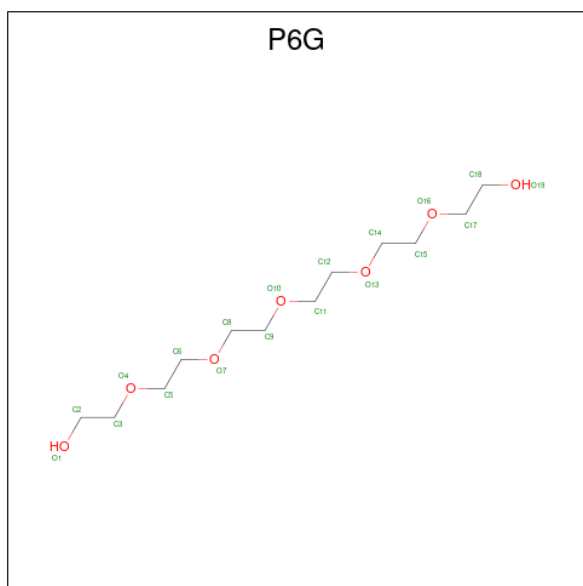
- Molecule 3 is (2S)-2-AMINO-4-[[[(2R)-2-CARBOXYBUTYL](PHOSPHONO)SULFONIMIDOYL]BUTANOIC ACID (three-letter code: P2S) (formula: C<sub>9</sub>H<sub>19</sub>N<sub>2</sub>O<sub>8</sub>PS).



Continued from previous page...

Mol	Chain	Residues	Atoms				ZeroOcc	AltConf	
			Total	C	N	O			P
4	B	1	27	10	5	10	2	0	0

- Molecule 5 is HEXAETHYLENE GLYCOL (three-letter code: P6G) (formula: C<sub>12</sub>H<sub>26</sub>O<sub>7</sub>).



Mol	Chain	Residues	Atoms		ZeroOcc	AltConf
			Total	O		
5	A	1	19	7	0	0
5	B	1	19	7	0	0

- Molecule 6 is water.

Mol	Chain	Residues	Atoms		ZeroOcc	AltConf
			Total	O		
6	A	194	194	194	0	0
6	B	152	152	152	0	0



## 4 Data and refinement statistics i

Property	Value	Source
Space group	P 1 21 1	Depositor
Cell constants a, b, c, $\alpha$ , $\beta$ , $\gamma$	70.47Å 97.36Å 102.19Å 90.00° 109.63° 90.00°	Depositor
Resolution (Å)	40.00 – 2.10 39.25 – 2.10	Depositor EDS
% Data completeness (in resolution range)	97.0 (40.00-2.10) 97.0 (39.25-2.10)	Depositor EDS
$R_{merge}$	0.08	Depositor
$R_{sym}$	(Not available)	Depositor
$\langle I/\sigma(I) \rangle$ <sup>1</sup>	2.67 (at 2.10Å)	Xtrriage
Refinement program	REFMAC 5.1.24	Depositor
R, $R_{free}$	0.200 , 0.225 0.225 , 0.243	Depositor DCC
$R_{free}$ test set	3702 reflections (5.03%)	wwPDB-VP
Wilson B-factor (Å <sup>2</sup> )	34.1	Xtrriage
Anisotropy	0.634	Xtrriage
Bulk solvent $k_{sol}$ (e/Å <sup>3</sup> ), $B_{sol}$ (Å <sup>2</sup> )	0.34 , 46.6	EDS
L-test for twinning <sup>2</sup>	$\langle  L  \rangle = 0.49$ , $\langle L^2 \rangle = 0.32$	Xtrriage
Estimated twinning fraction	0.087 for h,-k,-h-l	Xtrriage
$F_o, F_c$ correlation	0.94	EDS
Total number of atoms	8486	wwPDB-VP
Average B, all atoms (Å <sup>2</sup> )	29.0	wwPDB-VP

Xtrriage's analysis on translational NCS is as follows: *The largest off-origin peak in the Patterson function is 3.78% of the height of the origin peak. No significant pseudotranslation is detected.*

<sup>1</sup>Intensities estimated from amplitudes.

<sup>2</sup>Theoretical values of  $\langle |L| \rangle$ ,  $\langle L^2 \rangle$  for acentric reflections are 0.5, 0.333 respectively for untwinned datasets, and 0.375, 0.2 for perfectly twinned datasets.

## 5 Model quality [i](#)

### 5.1 Standard geometry [i](#)

Bond lengths and bond angles in the following residue types are not validated in this section: P2S, P6G, MG, ADP

The Z score for a bond length (or angle) is the number of standard deviations the observed value is removed from the expected value. A bond length (or angle) with  $|Z| > 5$  is considered an outlier worth inspection. RMSZ is the root-mean-square of all Z scores of the bond lengths (or angles).

Mol	Chain	Bond lengths		Bond angles	
		RMSZ	# Z  >5	RMSZ	# Z  >5
1	A	0.86	0/4103	0.80	13/5555 (0.2%)
1	B	0.77	0/4066	0.79	7/5506 (0.1%)
All	All	0.82	0/8169	0.80	20/11061 (0.2%)

There are no bond length outliers.

The worst 5 of 20 bond angle outliers are listed below:

Mol	Chain	Res	Type	Atoms	Z	Observed(°)	Ideal(°)
1	B	75	ASP	CB-CG-OD2	7.87	125.38	118.30
1	A	282	ASP	CB-CG-OD2	7.20	124.78	118.30
1	B	96	ASP	CB-CG-OD2	6.68	124.31	118.30
1	A	96	ASP	CB-CG-OD2	6.31	123.98	118.30
1	B	60	ASP	CB-CG-OD2	6.17	123.85	118.30

There are no chirality outliers.

There are no planarity outliers.

### 5.2 Too-close contacts [i](#)

In the following table, the Non-H and H(model) columns list the number of non-hydrogen atoms and hydrogen atoms in the chain respectively. The H(added) column lists the number of hydrogen atoms added and optimized by MolProbity. The Clashes column lists the number of clashes within the asymmetric unit, whereas Symm-Clashes lists symmetry-related clashes.

Mol	Chain	Non-H	H(model)	H(added)	Clashes	Symm-Clashes
1	A	4017	0	3935	56	0
1	B	3981	0	3889	44	0
2	A	4	0	0	0	0
2	B	4	0	0	0	0

*Continued on next page...*



Continued from previous page...

Mol	Chain	Non-H	H(model)	H(added)	Clashes	Symm-Clashes
3	A	21	0	15	0	0
3	B	21	0	15	0	0
4	A	27	0	12	0	0
4	B	27	0	12	0	0
5	A	19	0	26	5	0
5	B	19	0	26	7	0
6	A	194	0	0	6	0
6	B	152	0	0	4	0
All	All	8486	0	7930	101	0

The all-atom clashscore is defined as the number of clashes found per 1000 atoms (including hydrogen atoms). The all-atom clashscore for this structure is 6.

The worst 5 of 101 close contacts within the same asymmetric unit are listed below, sorted by their clash magnitude.

Atom-1	Atom-2	Interatomic distance (Å)	Clash overlap (Å)
1:B:431:LYS:HE2	1:B:435:GLU:OE2	1.79	0.82
1:A:242:THR:HG22	1:A:244:LYS:H	1.47	0.77
1:A:205:SER:HA	1:A:225:MET:HE2	1.67	0.76
1:A:188:TYR:HE1	5:A:526:P6G:H152	1.54	0.72
1:A:485:GLU:HG2	6:A:678:HOH:O	1.90	0.70

There are no symmetry-related clashes.

## 5.3 Torsion angles [i](#)

### 5.3.1 Protein backbone [i](#)

In the following table, the Percentiles column shows the percent Ramachandran outliers of the chain as a percentile score with respect to all X-ray entries followed by that with respect to entries of similar resolution.

The Analysed column shows the number of residues for which the backbone conformation was analysed, and the total number of residues.

Mol	Chain	Analysed	Favoured	Allowed	Outliers	Percentiles	
1	A	501/518 (97%)	489 (98%)	11 (2%)	1 (0%)	47	49
1	B	495/518 (96%)	480 (97%)	14 (3%)	1 (0%)	47	49
All	All	996/1036 (96%)	969 (97%)	25 (2%)	2 (0%)	47	49

All (2) Ramachandran outliers are listed below:

Mol	Chain	Res	Type
1	B	396	GLU
1	A	245	SER

### 5.3.2 Protein sidechains [i](#)

In the following table, the Percentiles column shows the percent sidechain outliers of the chain as a percentile score with respect to all X-ray entries followed by that with respect to entries of similar resolution.

The Analysed column shows the number of residues for which the sidechain conformation was analysed, and the total number of residues.

Mol	Chain	Analysed	Rotameric	Outliers	Percentiles	
1	A	424/434 (98%)	402 (95%)	22 (5%)	23	21
1	B	418/434 (96%)	402 (96%)	16 (4%)	33	34
All	All	842/868 (97%)	804 (96%)	38 (4%)	27	27

5 of 38 residues with a non-rotameric sidechain are listed below:

Mol	Chain	Res	Type
1	B	182	ARG
1	B	497	ARG
1	B	215	SER
1	B	366	SER
1	B	512	VAL

Sometimes sidechains can be flipped to improve hydrogen bonding and reduce clashes. All (1) such sidechains are listed below:

Mol	Chain	Res	Type
1	A	424	ASN

### 5.3.3 RNA [i](#)

There are no RNA molecules in this entry.

## 5.4 Non-standard residues in protein, DNA, RNA chains [i](#)

There are no non-standard protein/DNA/RNA residues in this entry.

## 5.5 Carbohydrates [i](#)

There are no monosaccharides in this entry.

## 5.6 Ligand geometry [i](#)

Of 14 ligands modelled in this entry, 8 are monoatomic - leaving 6 for Mogul analysis.

In the following table, the Counts columns list the number of bonds (or angles) for which Mogul statistics could be retrieved, the number of bonds (or angles) that are observed in the model and the number of bonds (or angles) that are defined in the Chemical Component Dictionary. The Link column lists molecule types, if any, to which the group is linked. The Z score for a bond length (or angle) is the number of standard deviations the observed value is removed from the expected value. A bond length (or angle) with  $|Z| > 2$  is considered an outlier worth inspection. RMSZ is the root-mean-square of all Z scores of the bond lengths (or angles).

Mol	Type	Chain	Res	Link	Bond lengths			Bond angles		
					Counts	RMSZ	# Z  > 2	Counts	RMSZ	# Z  > 2
5	P6G	B	1526	-	18,18,18	0.64	0	17,17,17	0.84	0
3	P2S	B	1520	2	15,20,20	3.63	9 (60%)	18,29,29	1.89	6 (33%)
4	ADP	A	521	2	24,29,29	1.36	4 (16%)	29,45,45	1.58	5 (17%)
5	P6G	A	526	-	18,18,18	0.58	0	17,17,17	0.79	0
4	ADP	B	1521	2	24,29,29	1.15	1 (4%)	29,45,45	1.61	6 (20%)
3	P2S	A	520	2	15,20,20	3.70	9 (60%)	18,29,29	1.69	4 (22%)

In the following table, the Chirals column lists the number of chiral outliers, the number of chiral centers analysed, the number of these observed in the model and the number defined in the Chemical Component Dictionary. Similar counts are reported in the Torsion and Rings columns. '-' means no outliers of that kind were identified.

Mol	Type	Chain	Res	Link	Chirals	Torsions	Rings
5	P6G	B	1526	-	-	8/16/16/16	-
3	P2S	B	1520	2	-	3/19/27/27	-
4	ADP	A	521	2	-	4/12/32/32	0/3/3/3
5	P6G	A	526	-	-	10/16/16/16	-
4	ADP	B	1521	2	-	3/12/32/32	0/3/3/3
3	P2S	A	520	2	-	4/19/27/27	-

The worst 5 of 23 bond length outliers are listed below:

Mol	Chain	Res	Type	Atoms	Z	Observed(Å)	Ideal(Å)
3	B	1520	P2S	CB-CG	-8.91	1.43	1.52

*Continued on next page...*

Continued from previous page...

Mol	Chain	Res	Type	Atoms	Z	Observed(Å)	Ideal(Å)
3	A	520	P2S	CB-CG	-7.51	1.44	1.52
3	A	520	P2S	P-OP3	6.42	1.56	1.46
3	B	1520	P2S	P-OP3	6.09	1.56	1.46
3	A	520	P2S	P-OP2	5.83	1.66	1.54

The worst 5 of 21 bond angle outliers are listed below:

Mol	Chain	Res	Type	Atoms	Z	Observed(°)	Ideal(°)
4	A	521	ADP	N3-C2-N1	-4.95	120.93	128.68
4	B	1521	ADP	N3-C2-N1	-4.87	121.07	128.68
3	B	1520	P2S	OS-S-CG	4.07	114.37	108.69
4	A	521	ADP	C2'-C3'-C4'	3.55	109.54	102.64
4	B	1521	ADP	C2'-C3'-C4'	3.34	109.13	102.64

There are no chirality outliers.

5 of 32 torsion outliers are listed below:

Mol	Chain	Res	Type	Atoms
3	A	520	P2S	S-CD-CE-C2
3	A	520	P2S	S-CD-CE-CF
3	B	1520	P2S	S-CD-CE-C2
3	B	1520	P2S	S-CD-CE-CF
4	A	521	ADP	O4'-C4'-C5'-O5'

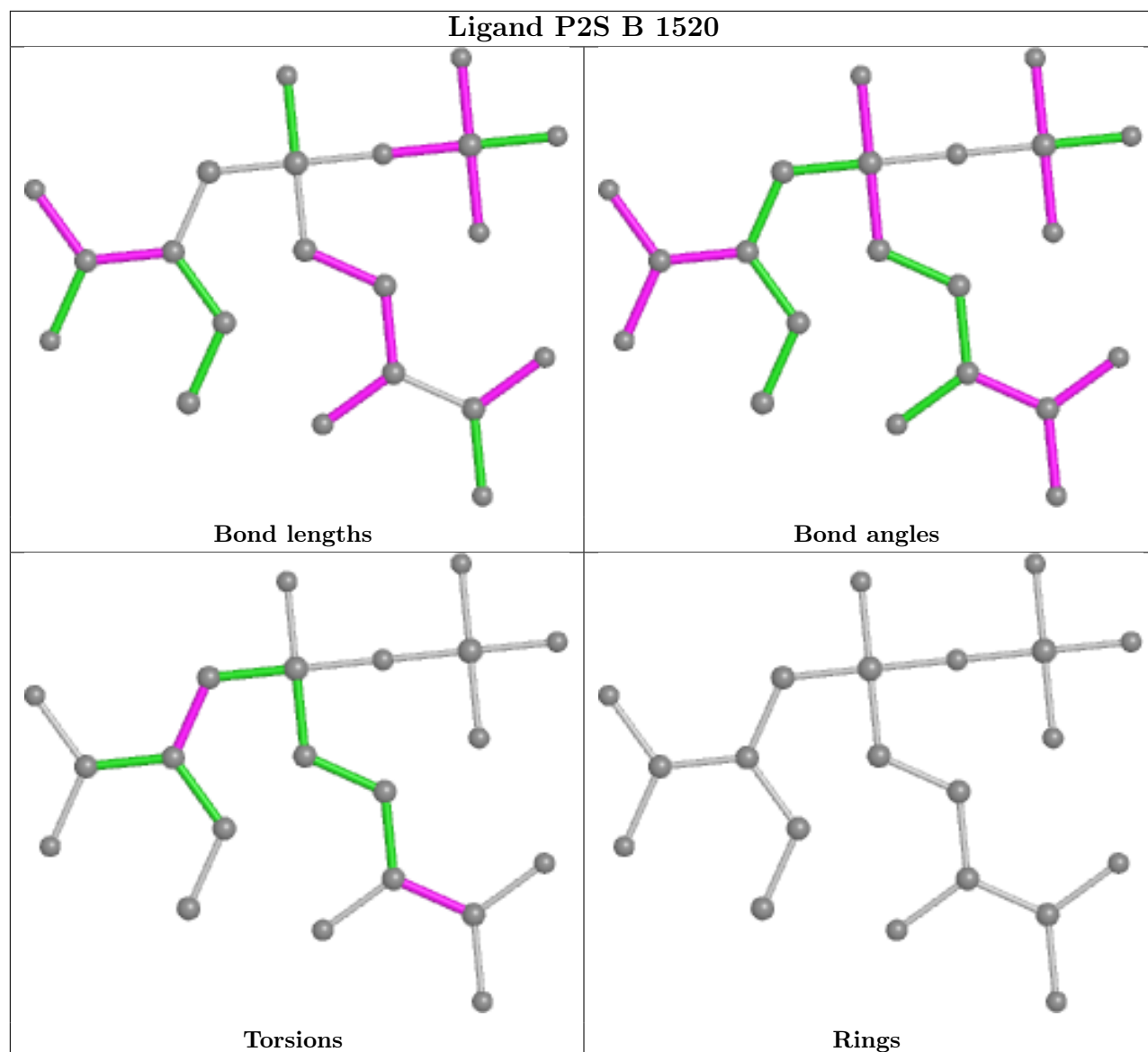
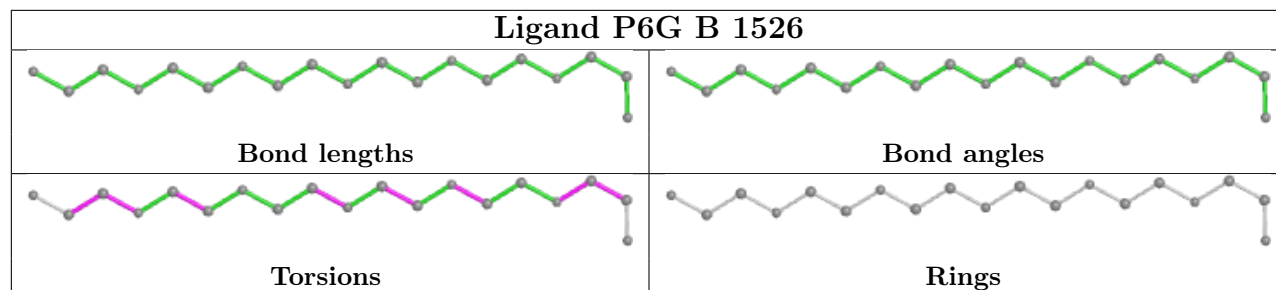
There are no ring outliers.

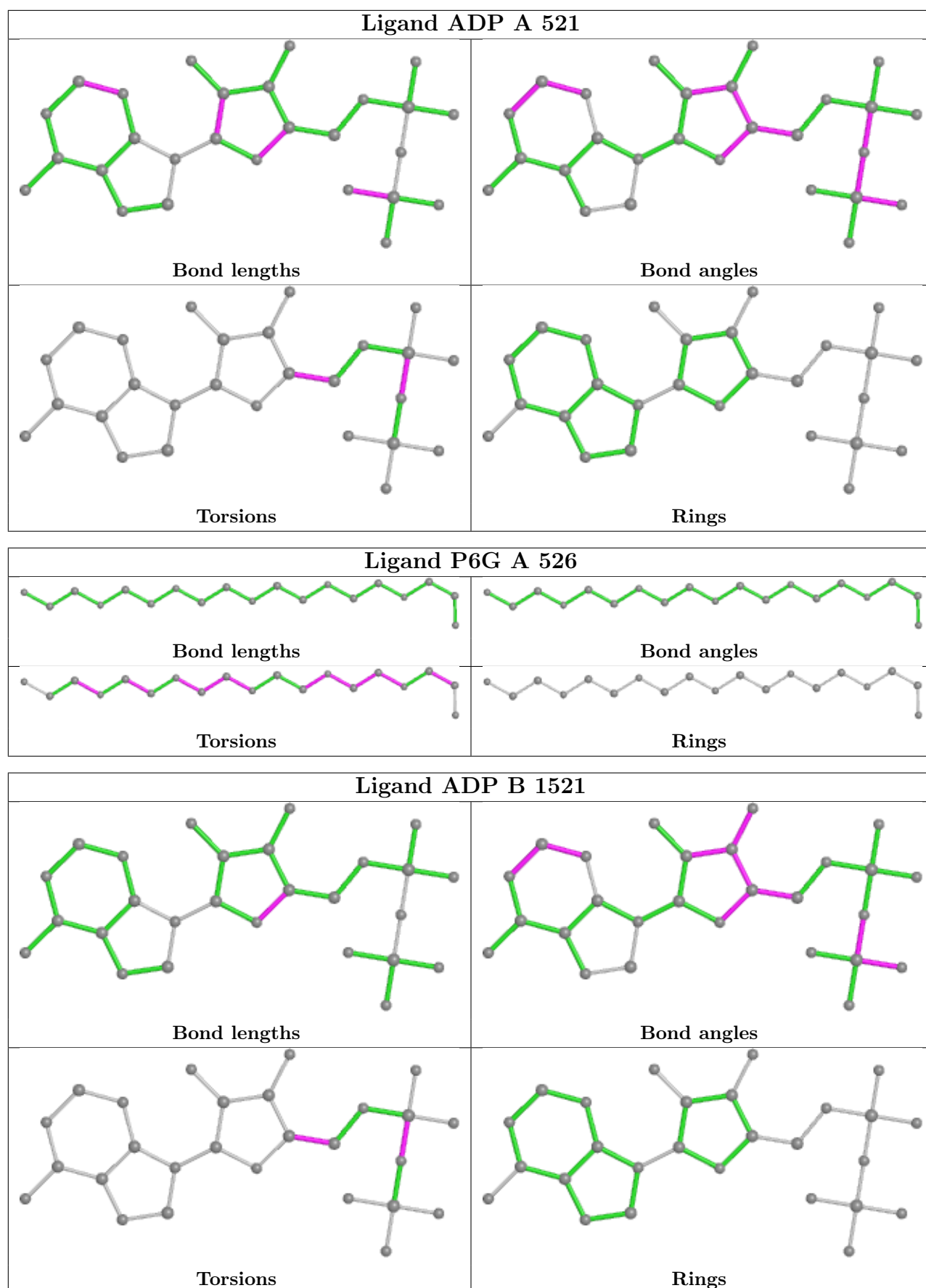
2 monomers are involved in 12 short contacts:

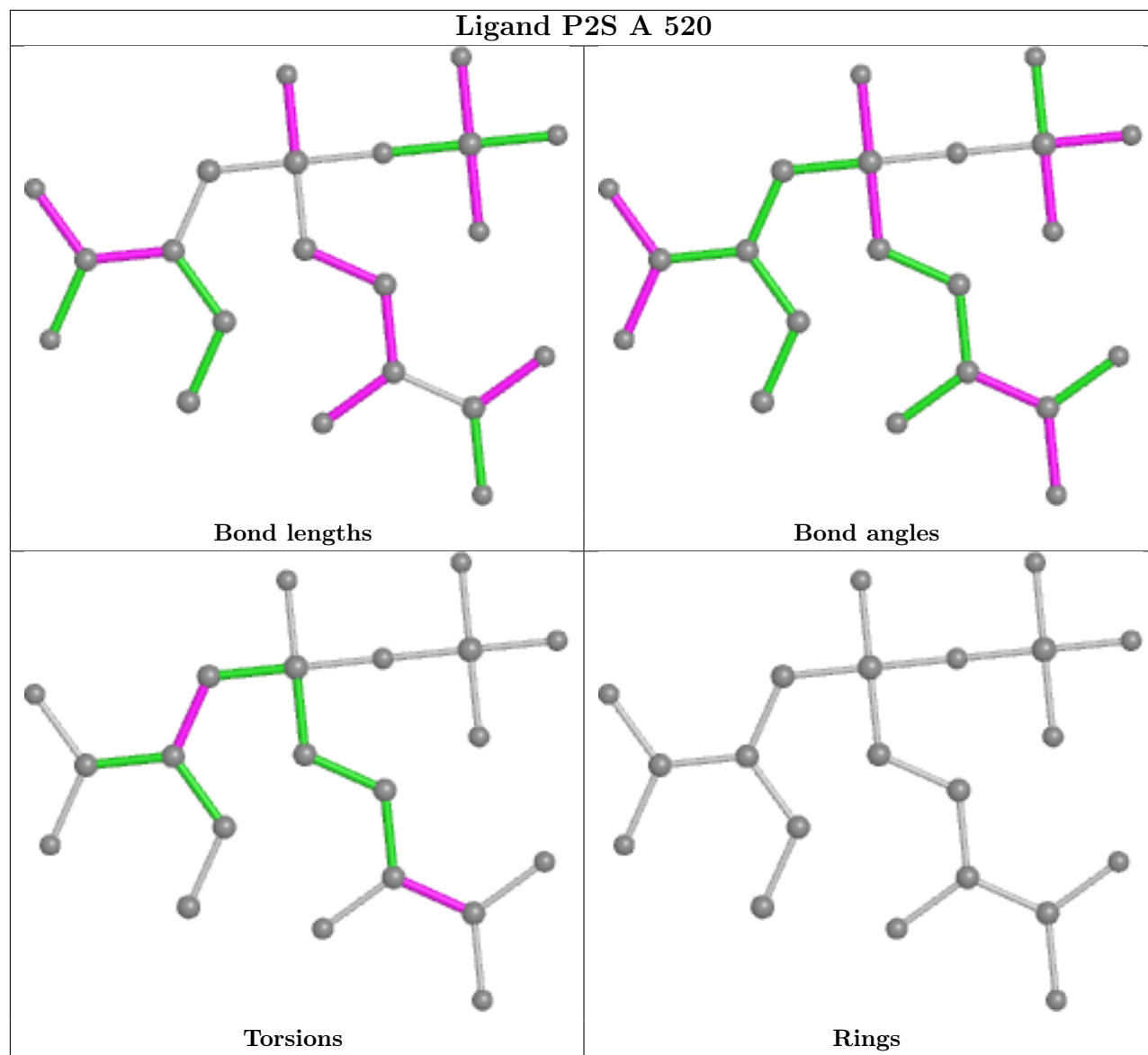
Mol	Chain	Res	Type	Clashes	Symm-Clashes
5	B	1526	P6G	7	0
5	A	526	P6G	5	0

The following is a two-dimensional graphical depiction of Mogul quality analysis of bond lengths, bond angles, torsion angles, and ring geometry for all instances of the Ligand of Interest. In addition, ligands with molecular weight > 250 and outliers as shown on the validation Tables will also be included. For torsion angles, if less than 5% of the Mogul distribution of torsion angles is within 10 degrees of the torsion angle in question, then that torsion angle is considered an outlier. Any bond that is central to one or more torsion angles identified as an outlier by Mogul will be highlighted in the graph. For rings, the root-mean-square deviation (RMSD) between the ring in question and similar rings identified by Mogul is calculated over all ring torsion angles. If the average RMSD is greater than 60 degrees and the minimal RMSD between the ring in question and any Mogul-identified rings is also greater than 60 degrees, then that ring is considered an outlier. The outliers are highlighted in purple. The color gray indicates Mogul did not find sufficient

equivalents in the CSD to analyse the geometry.







## 5.7 Other polymers [i](#)

There are no such residues in this entry.

## 5.8 Polymer linkage issues [i](#)

There are no chain breaks in this entry.

## 6 Fit of model and data [i](#)

### 6.1 Protein, DNA and RNA chains [i](#)

In the following table, the column labelled ‘#RSRZ > 2’ contains the number (and percentage) of RSRZ outliers, followed by percent RSRZ outliers for the chain as percentile scores relative to all X-ray entries and entries of similar resolution. The OWAB column contains the minimum, median, 95<sup>th</sup> percentile and maximum values of the occupancy-weighted average B-factor per residue. The column labelled ‘Q < 0.9’ lists the number of (and percentage) of residues with an average occupancy less than 0.9.

Mol	Chain	Analysed	<RSRZ>	#RSRZ>2	OWAB(Å <sup>2</sup> )	Q<0.9
1	A	507/518 (97%)	0.16	20 (3%) 39 45	7, 23, 53, 84	0
1	B	503/518 (97%)	0.34	29 (5%) 23 28	9, 28, 63, 93	0
All	All	1010/1036 (97%)	0.25	49 (4%) 29 35	7, 26, 60, 93	0

The worst 5 of 49 RSRZ outliers are listed below:

Mol	Chain	Res	Type	RSRZ
1	B	170	ALA	5.3
1	B	397	THR	4.6
1	A	311	SER	4.4
1	A	513	TRP	4.1
1	A	222	GLU	4.0

### 6.2 Non-standard residues in protein, DNA, RNA chains [i](#)

There are no non-standard protein/DNA/RNA residues in this entry.

### 6.3 Carbohydrates [i](#)

There are no monosaccharides in this entry.

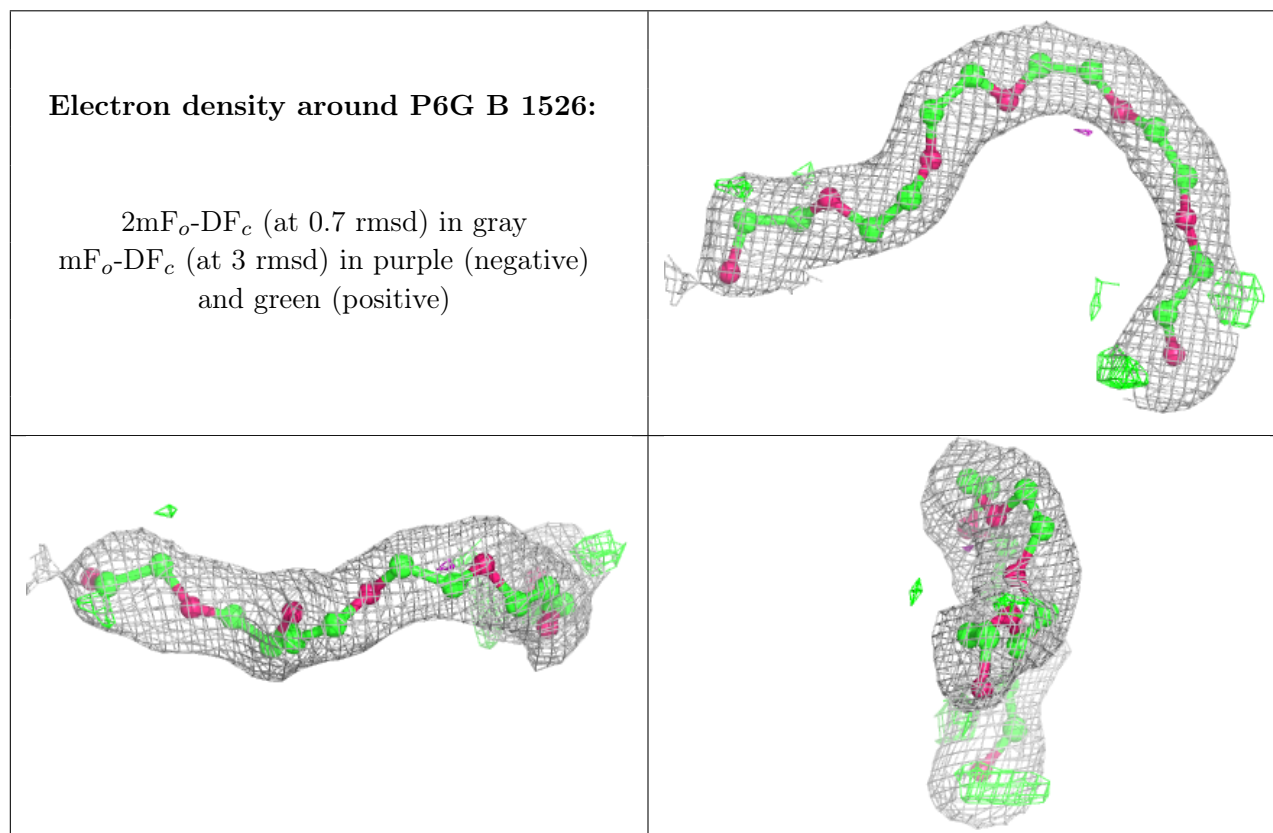
### 6.4 Ligands [i](#)

In the following table, the Atoms column lists the number of modelled atoms in the group and the number defined in the chemical component dictionary. The B-factors column lists the minimum, median, 95<sup>th</sup> percentile and maximum values of B factors of atoms in the group. The column labelled ‘Q < 0.9’ lists the number of atoms with occupancy less than 0.9.



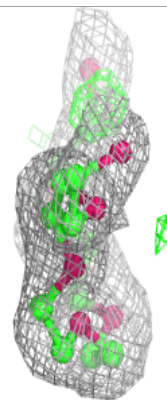
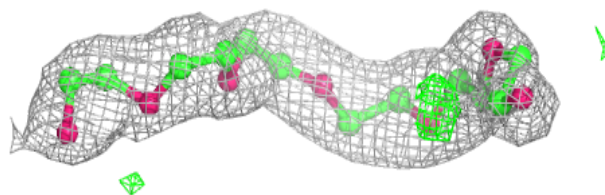
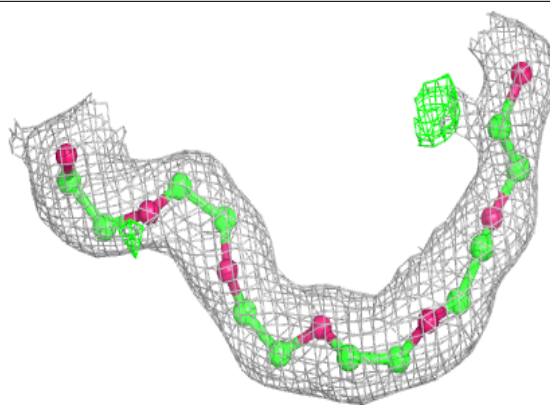
Mol	Type	Chain	Res	Atoms	RSCC	RSR	B-factors( $\text{\AA}^2$ )	Q<0.9
2	MG	B	1523	1/1	0.81	0.21	11,11,11,11	0
5	P6G	B	1526	19/19	0.83	0.22	29,34,48,49	0
2	MG	B	1522	1/1	0.86	0.22	21,21,21,21	0
2	MG	B	1525	1/1	0.89	0.06	31,31,31,31	0
2	MG	A	524	1/1	0.89	0.13	14,14,14,14	0
5	P6G	A	526	19/19	0.90	0.23	27,34,45,45	0
2	MG	B	1524	1/1	0.94	0.18	15,15,15,15	0
2	MG	A	523	1/1	0.94	0.22	15,15,15,15	0
2	MG	A	522	1/1	0.95	0.12	18,18,18,18	0
4	ADP	B	1521	27/27	0.96	0.16	7,11,16,18	0
2	MG	A	525	1/1	0.96	0.03	14,14,14,14	0
3	P2S	B	1520	21/21	0.96	0.17	12,18,26,28	0
4	ADP	A	521	27/27	0.97	0.13	3,11,15,18	0
3	P2S	A	520	21/21	0.97	0.17	9,16,24,26	0

The following is a graphical depiction of the model fit to experimental electron density of all instances of the Ligand of Interest. In addition, ligands with molecular weight > 250 and outliers as shown on the geometry validation Tables will also be included. Each fit is shown from different orientation to approximate a three-dimensional view.

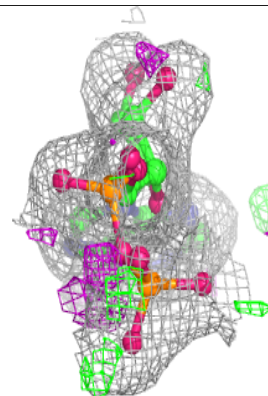
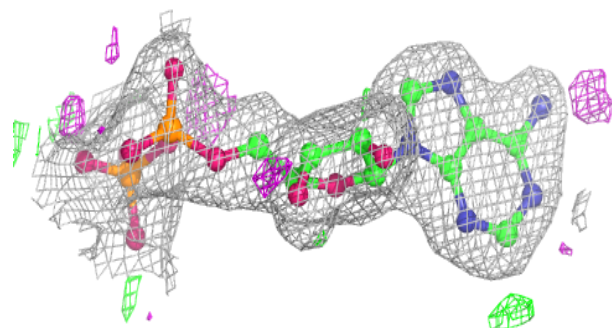
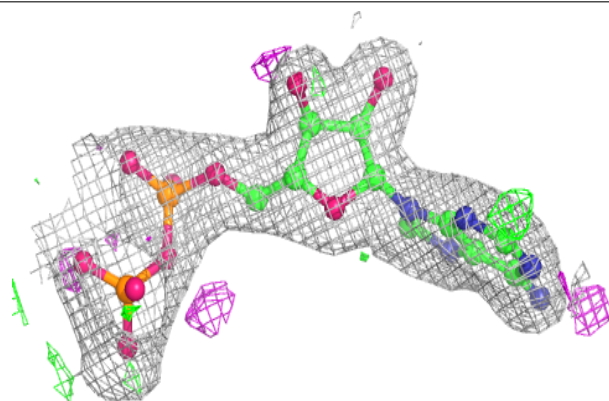


**Electron density around P6G A 526:**

$2mF_o-DF_c$  (at 0.7 rmsd) in gray  
 $mF_o-DF_c$  (at 3 rmsd) in purple (negative)  
and green (positive)

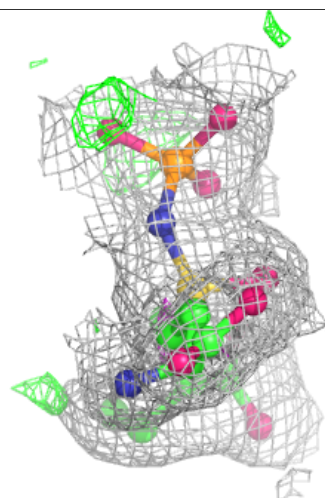
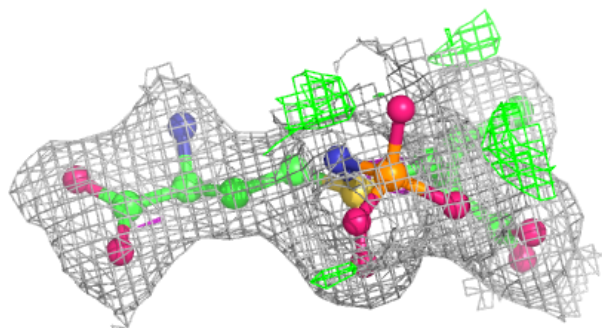
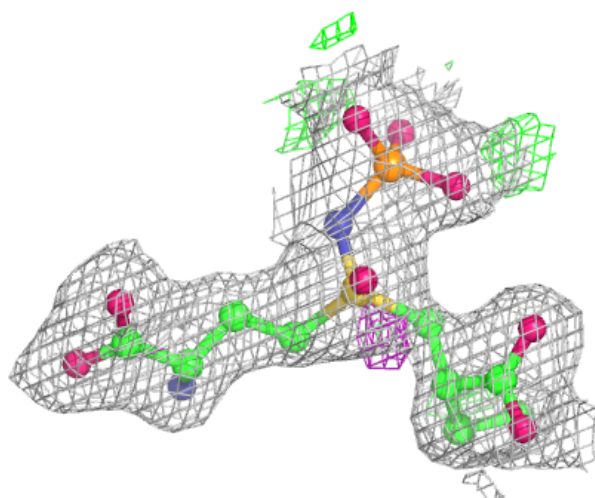
**Electron density around ADP B 1521:**

$2mF_o-DF_c$  (at 0.7 rmsd) in gray  
 $mF_o-DF_c$  (at 3 rmsd) in purple (negative)  
and green (positive)



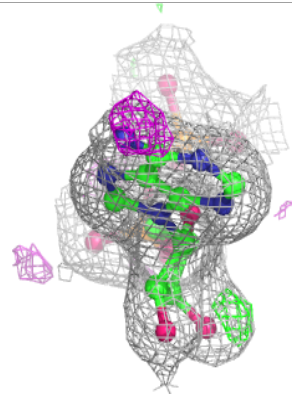
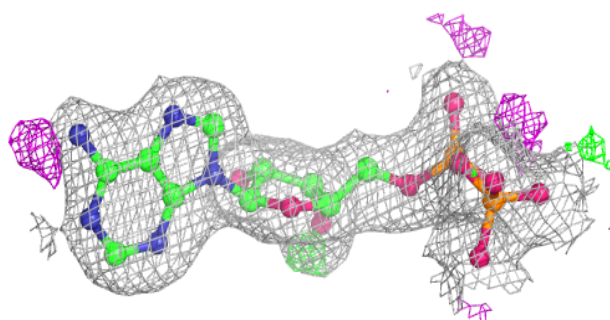
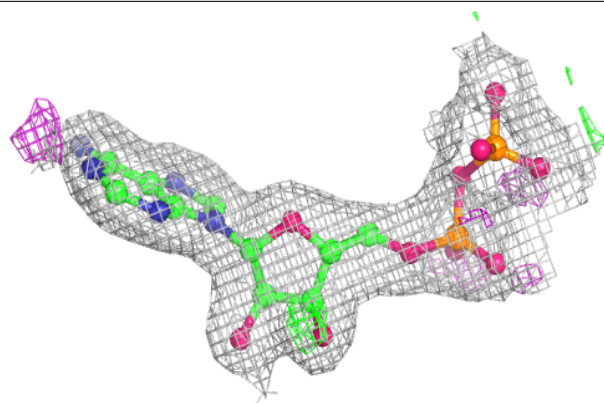
**Electron density around P2S B 1520:**

$2mF_o-DF_c$  (at 0.7 rmsd) in gray  
 $mF_o-DF_c$  (at 3 rmsd) in purple (negative)  
and green (positive)

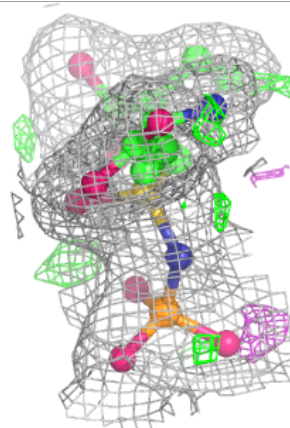
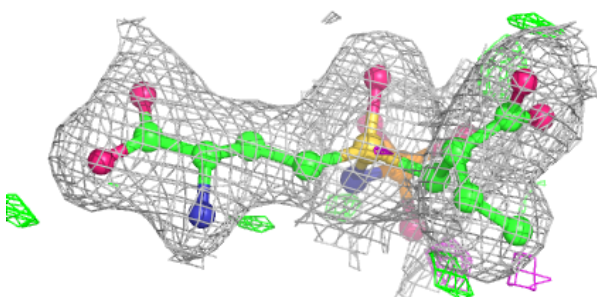
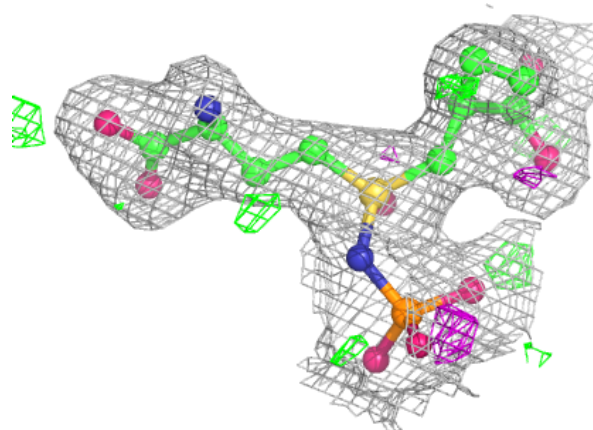


**Electron density around ADP A 521:**

$2mF_o-DF_c$  (at 0.7 rmsd) in gray  
 $mF_o-DF_c$  (at 3 rmsd) in purple (negative)  
and green (positive)

**Electron density around P2S A 520:**

$2mF_o-DF_c$  (at 0.7 rmsd) in gray  
 $mF_o-DF_c$  (at 3 rmsd) in purple (negative)  
and green (positive)



## 6.5 Other polymers [i](#)

There are no such residues in this entry.