



## Full wwPDB EM Validation Report ⓘ

Jun 1, 2026 – 05:40 PM JST

PDB ID : 9V8L / pdb\_00009v8l  
EMDB ID : EMD-64845  
Title : Cryo-EM structure of the cPRC1-di-nucleosome (loose) complex  
Authors : Yu, Y.; Cai, D.; Zhang, Y.Z.; Huang, J.  
Deposited on : 2025-05-29  
Resolution : 6.60 Å(reported)

This is a Full wwPDB EM Validation Report for a publicly released PDB entry.

We welcome your comments at [validation@mail.wwpdb.org](mailto:validation@mail.wwpdb.org)

A user guide is available at

<https://www.wwpdb.org/validation/2017/EMValidationReportHelp>

with specific help available everywhere you see the ⓘ symbol.

The types of validation reports are described at

<http://www.wwpdb.org/validation/2017/FAQs#types>.

---

The following versions of software and data (see [references ⓘ](#)) were used in the production of this report:

EMDB validation analysis : 0.0.1.dev132  
MolProbity : 4-5-2 with Phenix2.0  
Percentile statistics : 20250101.v01 (using entries in the PDB archive January 1st 2025)  
EM percentile statistics : 202505.v01 (Using data in the EMDB archive up until May 2025)  
MapQ : 1.9.13  
Ideal geometry (proteins) : Engh & Huber (2001)  
Ideal geometry (DNA, RNA) : Parkinson et al. (1996)  
Validation Pipeline (wwPDB-VP) : 2.49

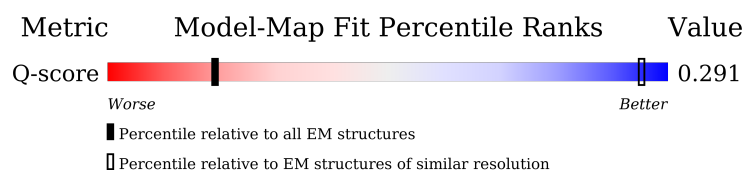
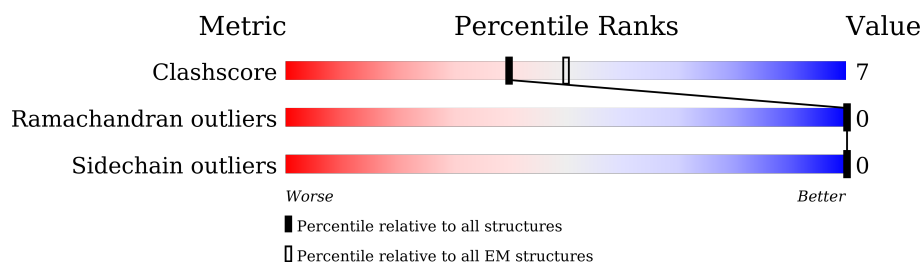
# 1 Overall quality at a glance

The following experimental techniques were used to determine the structure:

*ELECTRON MICROSCOPY*

The reported resolution of this entry is 6.60 Å.

Percentile scores (ranging between 0-100) for global validation metrics of the entry are shown in the following graphic. The table shows the number of entries on which the scores are based.



Metric	Whole archive (#Entries)	EM structures (#Entries)	Similar EM resolution (#Entries, resolution range(Å))
Clashscore	229148	23984	-
Ramachandran outliers	224038	23583	-
Sidechain outliers	223484	23102	-
Q-score	-	25397	531 ( 6.10 - 7.10 )

The table below summarises the geometric issues observed across the polymeric chains and their fit to the map. The red, orange, yellow and green segments of the bar indicate the fraction of residues that contain outliers for  $\geq 3$ , 2, 1 and 0 types of geometric quality criteria respectively. A grey segment represents the fraction of residues that are not modelled. The numeric value for each fraction is indicated below the corresponding segment, with a dot representing fractions  $\leq 5\%$ . The upper red bar (where present) indicates the fraction of residues that have poor fit to the EM map (all-atom inclusion  $< 40\%$ ). The numeric value is given above the bar.

Mol	Chain	Length	Quality of chain
1	A	136	
1	E	136	
1	K	136	
1	O	136	

*Continued on next page...*

Continued from previous page...

Mol	Chain	Length	Quality of chain
2	C	128	
2	G	128	
2	L	128	
2	Q	128	
3	D	126	
3	H	126	
3	P	126	
3	R	126	
4	B	103	
4	F	103	
4	S	103	
4	T	103	
5	I	271	
6	J	271	
7	M	326	
8	N	336	

## 2 Entry composition [i](#)

There are 9 unique types of molecules in this entry. The entry contains 44637 atoms, of which 20122 are hydrogens and 0 are deuteriums.

In the tables below, the AltConf column contains the number of residues with at least one atom in alternate conformation and the Trace column contains the number of residues modelled with at most 2 atoms.

- Molecule 1 is a protein called Histone H3.1.

Mol	Chain	Residues	Atoms						AltConf	Trace
1	A	97	Total	C	H	N	O	S	0	0
			1635	503	836	155	137	4		
1	E	95	Total	C	H	N	O	S	0	0
			1608	494	824	151	135	4		
1	K	96	Total	C	H	N	O	S	0	0
			1625	500	831	154	136	4		
1	O	95	Total	C	H	N	O	S	0	0
			1608	494	824	151	135	4		

- Molecule 2 is a protein called Histone H2A type 1-H.

Mol	Chain	Residues	Atoms					AltConf	Trace
2	G	104	Total	C	H	N	O	0	0
			1651	505	853	154	139		
2	C	104	Total	C	H	N	O	0	0
			1651	505	853	154	139		
2	L	104	Total	C	H	N	O	0	0
			1651	505	853	154	139		
2	Q	104	Total	C	H	N	O	0	0
			1651	505	853	154	139		

- Molecule 3 is a protein called Histone H2B type 1-C/E/F/G/I.

Mol	Chain	Residues	Atoms						AltConf	Trace
3	D	93	Total	C	H	N	O	S	0	0
			1467	455	743	130	137	2		
3	H	93	Total	C	H	N	O	S	0	0
			1466	455	742	130	137	2		
3	P	93	Total	C	H	N	O	S	0	0
			1466	455	742	130	137	2		
3	R	92	Total	C	H	N	O	S	0	0
			1455	452	737	129	135	2		

- Molecule 4 is a protein called Histone H4.

Mol	Chain	Residues	Atoms						AltConf	Trace
4	B	82	Total	C	H	N	O	S	0	0
			1348	412	696	127	112	1		
4	F	79	Total	C	H	N	O	S	0	0
			1289	395	663	121	109	1		
4	S	81	Total	C	H	N	O	S	0	0
			1332	407	687	126	111	1		
4	T	82	Total	C	H	N	O	S	0	0
			1348	412	696	127	112	1		

- Molecule 5 is a DNA chain called DNA (271-MER).

Mol	Chain	Residues	Atoms						AltConf	Trace
5	I	271	Total	C	H	N	O	P	0	0
			8597	2632	3039	1028	1627	271		

- Molecule 6 is a DNA chain called DNA (271-MER).

Mol	Chain	Residues	Atoms						AltConf	Trace
6	J	271	Total	C	H	N	O	P	0	0
			8591	2630	3038	1027	1625	271		

- Molecule 7 is a protein called Polycomb complex protein BMI-1.

Mol	Chain	Residues	Atoms						AltConf	Trace
7	M	97	Total	C	H	N	O	S	0	0
			1591	506	802	137	137	9		

- Molecule 8 is a protein called E3 ubiquitin-protein ligase RING2.

Mol	Chain	Residues	Atoms						AltConf	Trace
8	N	100	Total	C	H	N	O	S	0	0
			1603	498	810	138	147	10		

- Molecule 9 is ZINC ION (CCD ID: ZN) (formula: Zn) (labeled as "Ligand of Interest" by depositor).

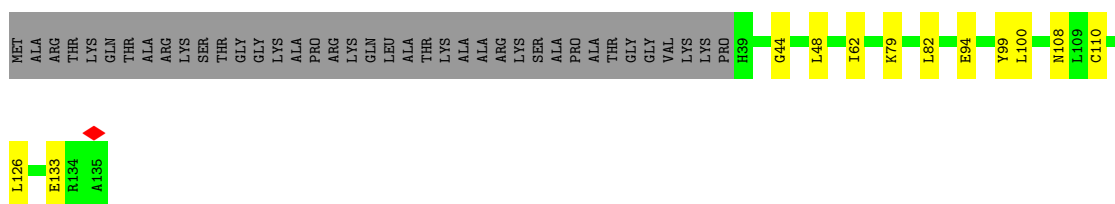
Mol	Chain	Residues	Atoms		AltConf
9	M	2	Total	Zn	0
			2	2	
9	N	2	Total	Zn	0
			2	2	

### 3 Residue-property plots [i](#)

These plots are drawn for all protein, RNA, DNA and oligosaccharide chains in the entry. The first graphic for a chain summarises the proportions of the various outlier classes displayed in the second graphic. The second graphic shows the sequence view annotated by issues in geometry and atom inclusion in map density. Residues are color-coded according to the number of geometric quality criteria for which they contain at least one outlier: green = 0, yellow = 1, orange = 2 and red = 3 or more. A red diamond above a residue indicates a poor fit to the EM map for this residue (all-atom inclusion < 40%). Stretches of 2 or more consecutive residues without any outlier are shown as a green connector. Residues present in the sample, but not in the model, are shown in grey.

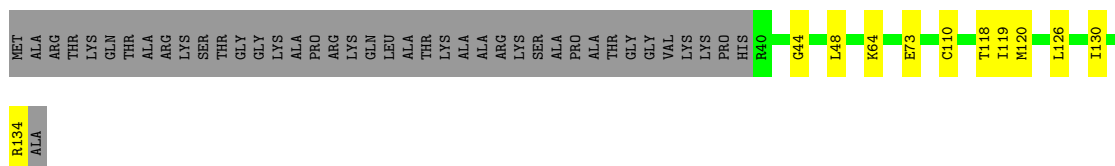
#### • Molecule 1: Histone H3.1

Chain A: 




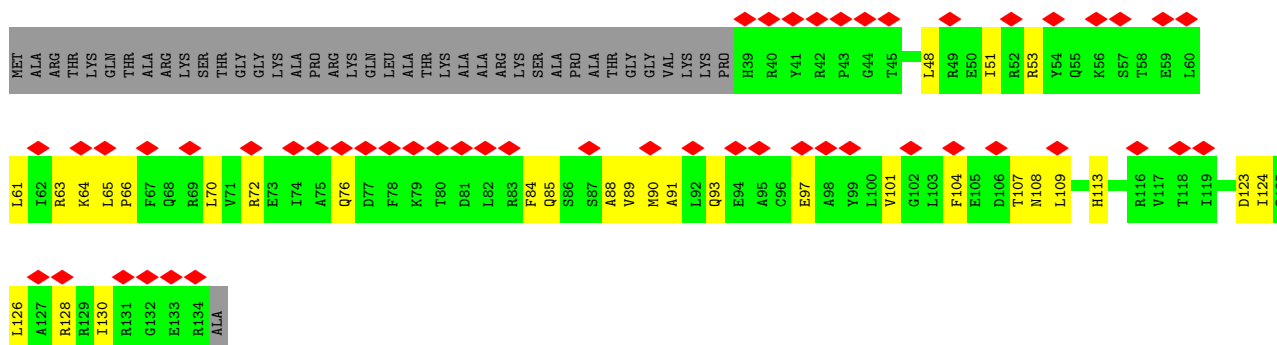
#### • Molecule 1: Histone H3.1

Chain E: 



#### • Molecule 1: Histone H3.1

Chain K: 



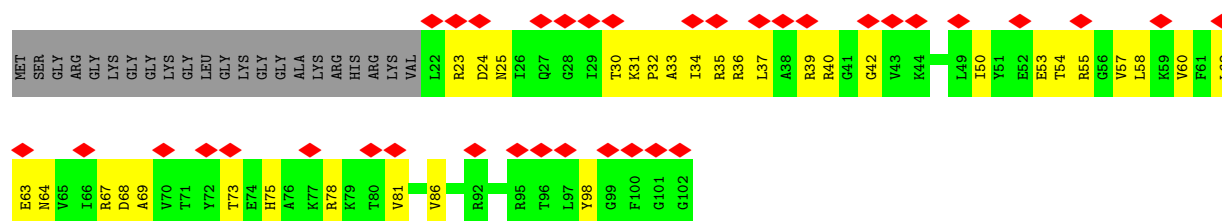
#### • Molecule 1: Histone H3.1

Chain O: 

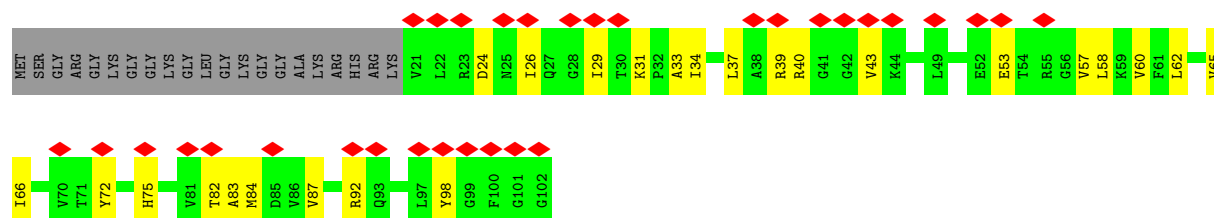




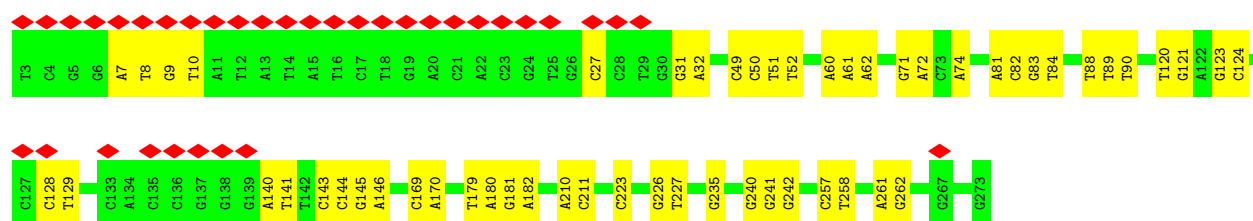
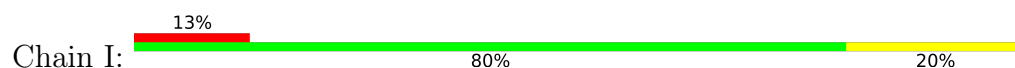




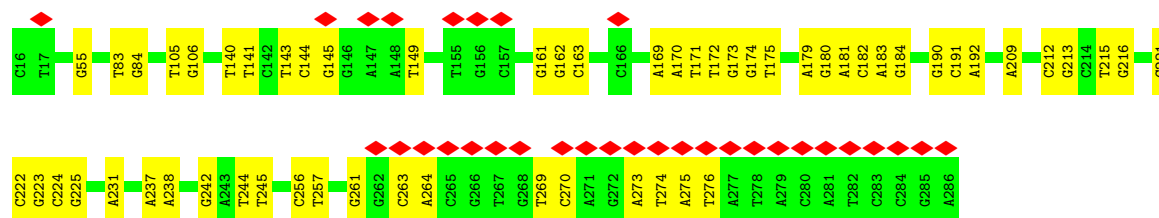
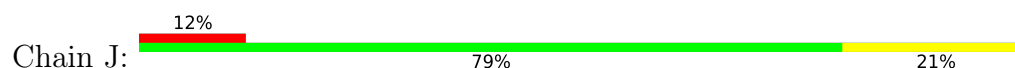
- Molecule 4: Histone H4



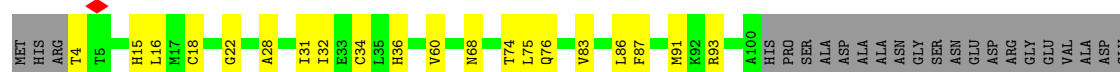
- Molecule 5: DNA (271-MER)



- Molecule 6: DNA (271-MER)



- Molecule 7: Polycomb complex protein BMI-1





## 4 Experimental information

Property	Value	Source
EM reconstruction method	SINGLE PARTICLE	Depositor
Imposed symmetry	POINT, Not provided	
Number of particles used	57544	Depositor
Resolution determination method	FSC 0.143 CUT-OFF	Depositor
CTF correction method	PHASE FLIPPING AND AMPLITUDE CORRECTION	Depositor
Microscope	TFS KRIOS	Depositor
Voltage (kV)	300	Depositor
Electron dose ( $e^-/\text{\AA}^2$ )	50	Depositor
Minimum defocus (nm)	800	Depositor
Maximum defocus (nm)	3000	Depositor
Magnification	Not provided	
Image detector	GATAN K3 (6k x 4k)	Depositor
Maximum map value	0.049	Depositor
Minimum map value	0.000	Depositor
Average map value	0.001	Depositor
Map value standard deviation	0.002	Depositor
Recommended contour level	0.007	Depositor
Map size (Å)	264.0, 264.0, 264.0	wwPDB
Map dimensions	240, 240, 240	wwPDB
Map angles (°)	90.0, 90.0, 90.0	wwPDB
Pixel spacing (Å)	1.1, 1.1, 1.1	Depositor

## 5 Model quality

### 5.1 Standard geometry

Bond lengths and bond angles in the following residue types are not validated in this section: ZN

The Z score for a bond length (or angle) is the number of standard deviations the observed value is removed from the expected value. A bond length (or angle) with  $|Z| > 5$  is considered an outlier worth inspection. RMSZ is the root-mean-square of all Z scores of the bond lengths (or angles).

Mol	Chain	Bond lengths		Bond angles	
		RMSZ	$\# Z  > 5$	RMSZ	$\# Z  > 5$
1	A	0.08	0/810	0.20	0/1086
1	E	0.09	0/794	0.23	0/1064
1	K	0.16	0/805	0.44	0/1079
1	O	0.14	0/794	0.40	0/1064
2	C	0.08	0/808	0.19	0/1092
2	G	0.08	0/808	0.20	0/1092
2	L	0.11	0/808	0.29	0/1092
2	Q	0.11	0/808	0.31	0/1092
3	D	0.08	0/735	0.22	0/989
3	H	0.09	0/735	0.21	0/989
3	P	0.17	0/735	0.45	0/989
3	R	0.13	0/729	0.36	0/981
4	B	0.08	0/659	0.23	0/883
4	F	0.08	0/633	0.22	0/848
4	S	0.14	0/652	0.46	0/873
4	T	0.14	0/659	0.37	0/883
5	I	0.19	0/6235	0.42	0/9622
6	J	0.18	0/6229	0.39	0/9611
7	M	0.09	0/804	0.28	0/1085
8	N	0.10	0/807	0.26	0/1091
All	All	0.15	0/26047	0.36	0/37505

There are no bond length outliers.

There are no bond angle outliers.

There are no chirality outliers.

There are no planarity outliers.

## 5.2 Too-close contacts ⓘ

In the following table, the Non-H and H(model) columns list the number of non-hydrogen atoms and hydrogen atoms in the chain respectively. The H(added) column lists the number of hydrogen atoms added and optimized by MolProbity. The Clashes column lists the number of clashes within the asymmetric unit, whereas Symm-Clashes lists symmetry-related clashes.

Mol	Chain	Non-H	H(model)	H(added)	Clashes	Symm-Clashes
1	A	799	836	836	8	0
1	E	784	824	824	10	0
1	K	794	831	831	27	0
1	O	784	824	824	30	0
2	C	798	853	853	7	0
2	G	798	853	853	6	0
2	L	798	853	853	13	0
2	Q	798	853	853	18	0
3	D	724	743	740	6	0
3	H	724	742	740	8	0
3	P	724	742	740	28	0
3	R	718	737	735	24	0
4	B	652	696	696	8	0
4	F	626	663	663	6	0
4	S	645	687	687	29	0
4	T	652	696	696	22	0
5	I	5558	3039	3039	49	0
6	J	5553	3038	3038	48	0
7	M	789	802	813	13	0
8	N	793	810	810	14	0
9	M	2	0	0	0	0
9	N	2	0	0	0	0
All	All	24515	20122	20124	311	0

The all-atom clashscore is defined as the number of clashes found per 1000 atoms (including hydrogen atoms). The all-atom clashscore for this structure is 7.

All (311) close contacts within the same asymmetric unit are listed below, sorted by their clash magnitude.

Atom-1	Atom-2	Interatomic distance (Å)	Clash overlap (Å)
4:B:35:ARG:NH2	5:I:223:DC:OP2	2.08	0.85
3:R:109:HIS:O	3:R:112:SER:OG	1.96	0.82
1:K:85:GLN:NE2	4:S:81:VAL:O	2.14	0.81
4:T:83:ALA:O	4:T:87:VAL:HG23	1.86	0.75
5:I:84:DT:O2	1:O:40:ARG:NH1	2.20	0.74

*Continued on next page...*

*Continued from previous page...*

Atom-1	Atom-2	Interatomic distance (Å)	Clash overlap (Å)
7:M:34:CYS:SG	7:M:36:HIS:ND1	2.61	0.73
1:O:54:TYR:OH	1:O:59:GLU:O	2.05	0.72
8:N:61:THR:HG21	8:N:106:PHE:HB2	1.72	0.70
3:P:68:ASP:OD1	3:P:69:ILE:N	2.25	0.70
1:O:57:SER:OG	1:O:59:GLU:OE1	2.08	0.70
3:D:121:TYR:O	2:C:20:ARG:NH2	2.25	0.69
7:M:83:VAL:HG12	7:M:86:LEU:HD23	1.75	0.69
1:E:119:ILE:C	1:E:120:MET:HE2	2.18	0.68
3:P:92:ARG:O	3:P:96:THR:HG23	1.94	0.68
3:R:90:THR:OG1	3:R:93:GLU:OE1	2.11	0.68
1:K:124:ILE:HD11	4:S:50:ILE:HG23	1.75	0.67
1:A:108:ASN:ND2	4:B:42:GLY:O	2.27	0.67
1:E:120:MET:HE2	1:E:120:MET:N	2.10	0.67
6:J:169:DA:O3'	2:L:29:ARG:NH2	2.28	0.67
7:M:4:THR:N	8:N:40:VAL:O	2.28	0.67
6:J:209:DA:OP1	1:O:42:ARG:NH2	2.26	0.67
3:P:41:VAL:O	3:P:45:LEU:HD12	1.95	0.67
6:J:242:DG:O5'	4:S:78:ARG:NH1	2.29	0.66
4:F:54:THR:O	4:F:58:LEU:HD23	1.95	0.66
7:M:93:ARG:NH2	8:N:29:GLN:OE1	2.27	0.66
6:J:180:DG:OP1	3:R:88:THR:OG1	2.06	0.66
1:O:125:GLN:NE2	4:T:53:GLU:OE2	2.27	0.66
1:K:66:PRO:O	1:K:70:LEU:HD23	1.96	0.66
3:H:112:SER:OG	3:H:116:LYS:NZ	2.30	0.65
3:H:90:THR:N	3:H:93:GLU:OE2	2.30	0.64
1:A:99:TYR:OH	1:A:133:GLU:OE2	2.12	0.63
1:A:100:LEU:HD23	4:B:37:LEU:HD13	1.80	0.63
4:S:37:LEU:HD22	4:S:40:ARG:HH12	1.63	0.63
3:P:72:ARG:O	3:P:76:GLU:OE1	2.17	0.62
5:I:7:DA:H2'	5:I:8:DT:H71	1.80	0.62
3:P:48:VAL:HG11	2:Q:63:LEU:HD11	1.80	0.62
3:P:113:GLU:OE1	2:Q:53:ALA:HB1	1.99	0.62
4:S:50:ILE:O	4:S:54:THR:HG23	2.00	0.62
1:K:89:VAL:O	1:K:93:GLN:OE1	2.16	0.62
2:C:64:GLU:OE2	2:C:68:ASN:ND2	2.33	0.62
1:O:90:MET:HA	1:O:90:MET:HE3	1.81	0.62
3:D:68:ASP:OD2	4:F:98:TYR:OH	2.18	0.61
5:I:50:DC:H2''	5:I:51:DT:H71	1.81	0.61
1:O:93:GLN:O	1:O:97:GLU:OE1	2.18	0.61
1:K:93:GLN:O	1:K:97:GLU:OE1	2.17	0.61
3:P:61:ILE:HD11	2:Q:83:LEU:HD13	1.84	0.60

*Continued on next page...*

*Continued from previous page...*

Atom-1	Atom-2	Interatomic distance (Å)	Clash overlap (Å)
8:N:23:GLU:N	8:N:23:GLU:OE1	2.34	0.60
1:A:62:ILE:HD11	4:B:37:LEU:HD11	1.83	0.60
3:P:69:ILE:O	3:P:73:ILE:HG23	2.01	0.60
3:R:109:HIS:O	3:R:113:GLU:OE1	2.20	0.60
3:P:90:THR:N	3:P:93:GLU:OE2	2.35	0.59
2:L:27:VAL:HG12	2:L:31:HIS:CD2	2.38	0.59
6:J:212:DC:OP2	1:O:116:ARG:NH1	2.35	0.59
4:S:34:ILE:HD12	4:S:55:ARG:NH1	2.17	0.59
1:K:128:ARG:HE	1:K:128:ARG:HA	1.67	0.59
4:B:39:ARG:NH1	4:B:44:LYS:O	2.36	0.59
5:I:140:DA:H2'	5:I:141:DT:H72	1.84	0.59
6:J:231:DA:O3'	1:K:63:ARG:NE	2.36	0.58
5:I:27:DC:N4	6:J:261:DG:O6	2.36	0.58
8:N:61:THR:HG22	8:N:107:ASP:OD1	2.03	0.58
1:K:108:ASN:ND2	4:S:42:GLY:O	2.35	0.58
3:R:45:LEU:O	3:R:49:HIS:N	2.37	0.58
1:K:126:LEU:O	1:K:130:ILE:HD12	2.04	0.58
4:T:29:ILE:HD12	4:T:34:ILE:HD13	1.85	0.58
8:N:79:ALA:O	8:N:83:GLY:N	2.37	0.57
1:O:90:MET:O	1:O:94:GLU:OE1	2.21	0.57
1:K:88:ALA:HB1	4:S:86:VAL:HG21	1.86	0.57
6:J:222:DC:C2	6:J:223:DG:N7	2.74	0.56
1:O:99:TYR:O	1:O:103:LEU:HD23	2.05	0.56
1:K:90:MET:SD	1:K:91:ALA:N	2.79	0.56
1:K:128:ARG:HA	1:K:128:ARG:NE	2.20	0.56
3:P:108:LYS:HA	3:P:111:VAL:HG22	1.86	0.55
6:J:190:DG:OP1	1:O:85:GLN:NE2	2.39	0.55
8:N:21:LEU:O	8:N:25:GLN:NE2	2.40	0.55
4:S:54:THR:O	4:S:58:LEU:HD23	2.07	0.55
5:I:88:DT:H2'	5:I:89:DT:H71	1.90	0.54
1:K:123:ASP:OD1	1:K:124:ILE:N	2.41	0.54
7:M:28:ALA:N	7:M:76:GLN:OE1	2.38	0.54
4:B:52:GLU:N	4:B:52:GLU:OE1	2.38	0.54
4:F:32:PRO:O	4:F:36:ARG:NE	2.41	0.54
4:T:58:LEU:O	4:T:62:LEU:HD13	2.08	0.53
2:L:27:VAL:HG12	2:L:31:HIS:HD2	1.74	0.53
6:J:182:DC:C2	6:J:183:DA:N7	2.76	0.53
3:R:62:MET:HE2	3:R:62:MET:HA	1.90	0.52
5:I:50:DC:C2'	5:I:51:DT:H71	2.38	0.52
1:E:110:CYS:SG	1:E:126:LEU:HD23	2.50	0.52
2:L:25:PHE:N	2:L:56:GLU:OE2	2.37	0.52

*Continued on next page...*

*Continued from previous page...*

Atom-1	Atom-2	Interatomic distance (Å)	Clash overlap (Å)
3:P:96:THR:O	3:P:100:LEU:HD23	2.09	0.52
3:P:68:ASP:OD2	4:T:98:TYR:OH	2.10	0.52
3:P:89:ILE:O	2:Q:44:GLY:N	2.35	0.52
4:S:58:LEU:O	4:S:62:LEU:HD13	2.10	0.52
5:I:51:DT:H2'	5:I:52:DT:H71	1.91	0.51
6:J:180:DG:OP2	3:R:86:ARG:NE	2.39	0.51
6:J:275:DA:C2'	6:J:276:DT:H71	2.39	0.51
1:A:79:LYS:HB2	1:A:82:LEU:HD21	1.92	0.51
2:Q:65:LEU:HD22	2:Q:86:ALA:HB1	1.91	0.51
6:J:256:DC:H2'	6:J:257:DT:H71	1.92	0.51
2:L:84:GLN:OE1	2:L:85:LEU:HD22	2.11	0.50
6:J:170:DA:H2'	6:J:171:DT:H71	1.92	0.50
4:F:68:ASP:OD2	4:F:92:ARG:NH2	2.44	0.50
6:J:275:DA:H2''	6:J:276:DT:H71	1.94	0.50
2:G:47:ALA:HB1	3:H:94:ILE:HD12	1.92	0.49
3:P:38:SER:HA	3:P:59:MET:HE2	1.94	0.49
7:M:32:ILE:HG13	7:M:32:ILE:O	2.11	0.49
5:I:51:DT:C2'	5:I:52:DT:H71	2.41	0.49
4:T:26:ILE:HD12	4:T:26:ILE:H	1.77	0.49
3:P:41:VAL:O	3:P:44:VAL:HG22	2.13	0.49
1:K:61:LEU:HD12	4:S:40:ARG:NE	2.28	0.48
1:K:70:LEU:HD22	4:S:25:ASN:ND2	2.27	0.48
2:G:47:ALA:HB1	3:H:94:ILE:CD1	2.44	0.48
3:R:115:THR:O	3:R:119:THR:HG23	2.13	0.48
3:P:96:THR:HG21	4:S:75:HIS:NE2	2.29	0.48
5:I:61:DA:H2''	5:I:62:DA:C8	2.48	0.48
8:N:62:MET:HE1	8:N:100:LEU:HD12	1.96	0.48
1:O:121:PRO:O	1:O:124:ILE:N	2.45	0.48
3:P:41:VAL:O	3:P:45:LEU:CD1	2.62	0.48
3:H:105:GLU:OE1	3:H:105:GLU:N	2.43	0.48
6:J:181:DA:C4	6:J:182:DC:C5	3.02	0.48
5:I:240:DG:H1'	5:I:241:DG:C8	2.49	0.47
7:M:18:CYS:O	7:M:22:GLY:N	2.47	0.47
8:N:16:THR:N	8:N:18:GLU:OE1	2.47	0.47
1:E:118:THR:HG23	1:E:120:MET:CE	2.44	0.47
5:I:89:DT:C2'	5:I:90:DT:H71	2.45	0.47
5:I:124:DC:OP1	3:R:36:SER:OG	2.31	0.47
3:R:109:HIS:NE2	3:R:113:GLU:OE2	2.46	0.47
6:J:174:DG:H2'	6:J:175:DT:H72	1.97	0.47
5:I:120:DT:H2''	5:I:121:DG:N7	2.30	0.47
6:J:221:DC:C2	6:J:222:DC:C5	3.02	0.47

*Continued on next page...*



*Continued from previous page...*

Atom-1	Atom-2	Interatomic distance (Å)	Clash overlap (Å)
2:Q:38:ASN:OD1	2:Q:38:ASN:O	2.33	0.47
4:T:57:VAL:O	4:T:60:VAL:HG12	2.15	0.47
1:K:61:LEU:HD12	4:S:40:ARG:HE	1.80	0.47
3:R:79:ARG:NH2	3:R:83:TYR:OH	2.48	0.47
6:J:149:DT:OP1	1:K:53:ARG:NH1	2.48	0.47
1:O:122:LYS:HA	1:O:125:GLN:OE1	2.14	0.47
4:T:33:ALA:O	4:T:37:LEU:HD23	2.15	0.47
4:T:82:THR:HG22	4:T:83:ALA:N	2.30	0.47
4:S:69:ALA:O	4:S:73:THR:HG23	2.15	0.47
6:J:144:DC:H2'	6:J:145:DG:C6	2.50	0.46
1:K:124:ILE:CD1	4:S:50:ILE:HG23	2.45	0.46
3:P:45:LEU:O	3:P:49:HIS:N	2.44	0.46
4:S:53:GLU:O	4:S:57:VAL:HG13	2.15	0.46
4:S:67:ARG:NH1	4:S:68:ASP:OD1	2.47	0.46
3:H:76:GLU:OE2	3:H:76:GLU:HA	2.16	0.46
5:I:235:DG:N1	6:J:55:DG:O6	2.47	0.46
1:O:103:LEU:HD22	1:O:131:ARG:HH12	1.79	0.46
2:L:64:GLU:OE2	3:R:49:HIS:NE2	2.49	0.46
1:O:88:ALA:O	1:O:92:LEU:HD23	2.15	0.46
6:J:237:DA:H2''	6:J:238:DA:C8	2.51	0.46
6:J:244:DT:H2'	6:J:245:DT:H72	1.98	0.46
1:O:120:MET:HG2	1:O:122:LYS:HG2	1.97	0.46
8:N:16:THR:OG1	8:N:17:TRP:N	2.46	0.46
5:I:145:DG:H2'	5:I:146:DA:C8	2.51	0.46
5:I:181:DG:HI'	5:I:182:DA:C8	2.51	0.46
8:N:93:LYS:NZ	8:N:94:LEU:O	2.47	0.46
5:I:32:DA:OP1	2:Q:17:ARG:N	2.32	0.46
6:J:140:DT:H2'	6:J:141:DT:H72	1.98	0.46
7:M:87:PHE:O	7:M:91:MET:HE3	2.16	0.46
3:R:41:VAL:HA	3:R:44:VAL:HG12	1.97	0.46
5:I:61:DA:H2''	5:I:62:DA:N7	2.30	0.46
3:R:79:ARG:CZ	3:R:83:TYR:OH	2.64	0.46
4:S:33:ALA:O	4:S:37:LEU:HD23	2.15	0.46
4:T:62:LEU:HA	4:T:65:VAL:HG22	1.97	0.45
5:I:88:DT:C2'	5:I:89:DT:H71	2.47	0.45
3:P:113:GLU:O	3:P:116:LYS:HG2	2.16	0.45
4:S:23:ARG:O	4:S:24:ASP:OD1	2.34	0.45
4:T:84:MET:HE2	4:T:84:MET:HA	1.98	0.45
5:I:123:DG:H3'	3:R:39:VAL:HG21	1.98	0.45
1:O:70:LEU:HD23	1:O:74:ILE:HD12	1.97	0.45
2:L:24:GLN:N	2:L:56:GLU:OE2	2.49	0.45

*Continued on next page...*

*Continued from previous page...*

Atom-1	Atom-2	Interatomic distance (Å)	Clash overlap (Å)
1:O:99:TYR:OH	1:O:133:GLU:OE1	2.33	0.45
4:T:24:ASP:OD1	4:T:24:ASP:O	2.35	0.45
1:K:72:ARG:O	1:K:76:GLN:OE1	2.34	0.45
1:A:110:CYS:SG	1:A:126:LEU:HD23	2.56	0.45
5:I:9:DG:H2'	5:I:10:DT:H72	1.99	0.45
6:J:105:DT:N3	6:J:106:DG:O6	2.50	0.45
2:C:90:ASP:OD1	2:C:91:GLU:N	2.46	0.45
5:I:241:DG:H1'	5:I:242:DG:C8	2.52	0.45
7:M:15:HIS:C	7:M:16:LEU:HD12	2.42	0.45
4:S:32:PRO:HA	4:S:35:ARG:HB3	1.98	0.45
4:T:29:ILE:CD1	4:T:34:ILE:HD13	2.46	0.45
8:N:49:LEU:HD11	8:N:110:ILE:HD11	1.99	0.44
1:K:104:PHE:HA	1:K:107:THR:HG22	1.98	0.44
5:I:144:DC:H2''	5:I:145:DG:C8	2.52	0.44
1:A:44:GLY:O	1:A:48:LEU:HD23	2.17	0.44
3:D:103:PRO:O	2:C:95:LYS:NZ	2.44	0.44
3:P:65:PHE:O	3:P:68:ASP:OD1	2.35	0.44
2:Q:96:LEU:C	2:Q:97:LEU:HD22	2.42	0.44
3:R:98:VAL:HG22	3:R:102:LEU:HD12	1.99	0.44
5:I:52:DT:OP1	1:K:84:PHE:N	2.43	0.44
8:N:61:THR:HG22	8:N:107:ASP:CG	2.42	0.44
3:P:40:TYR:O	3:P:44:VAL:HG13	2.17	0.44
3:R:100:LEU:O	4:T:92:ARG:NH2	2.50	0.44
2:G:30:VAL:O	2:G:34:LEU:HD13	2.18	0.44
5:I:62:DA:H3'	4:S:32:PRO:HG3	1.99	0.44
6:J:223:DG:C4	6:J:224:DC:C4	3.06	0.44
3:P:117:ALA:HB1	2:Q:23:LEU:HD21	1.98	0.44
5:I:144:DC:H2''	5:I:145:DG:N7	2.32	0.44
6:J:140:DT:H4'	6:J:141:DT:OP1	2.18	0.44
6:J:263:DC:C2	6:J:264:DA:N7	2.86	0.44
4:T:31:LYS:HA	4:T:34:ILE:HG22	1.98	0.44
1:E:134:ARG:HG2	1:E:134:ARG:HH11	1.83	0.44
5:I:60:DA:H1'	5:I:61:DA:N7	2.33	0.44
1:O:94:GLU:HA	1:O:97:GLU:CD	2.43	0.44
1:O:82:LEU:HD23	1:O:82:LEU:H	1.83	0.44
3:P:70:PHE:CE1	2:Q:51:LEU:HD23	2.53	0.44
4:S:34:ILE:HD12	4:S:55:ARG:CZ	2.48	0.44
5:I:81:DA:H1'	5:I:82:DC:C6	2.53	0.43
2:L:81:ARG:O	2:L:85:LEU:HD23	2.18	0.43
1:O:50:GLU:OE1	4:T:39:ARG:NH1	2.44	0.43
6:J:212:DC:C2	6:J:213:DG:N7	2.87	0.43

*Continued on next page...*

*Continued from previous page...*

Atom-1	Atom-2	Interatomic distance (Å)	Clash overlap (Å)
6:J:256:DC:C2'	6:J:257:DT:H71	2.47	0.43
3:R:99:ARG:HA	3:R:107:ALA:HB1	2.00	0.43
6:J:172:DT:C2	6:J:173:DG:N7	2.87	0.43
1:K:113:HIS:CD2	1:O:126:LEU:HD23	2.53	0.43
5:I:179:DT:H2''	5:I:180:DA:N7	2.33	0.43
2:L:100:VAL:HG13	4:S:98:TYR:HE1	1.83	0.43
5:I:128:DC:C2'	5:I:129:DT:H71	2.49	0.43
6:J:179:DA:H1'	6:J:180:DG:C8	2.54	0.43
4:F:65:VAL:O	4:F:68:ASP:OD1	2.37	0.43
3:D:109:HIS:O	3:D:113:GLU:HG2	2.19	0.43
6:J:169:DA:C4	6:J:170:DA:C8	3.07	0.43
2:Q:47:ALA:O	2:Q:51:LEU:HD13	2.19	0.43
4:T:62:LEU:O	4:T:66:ILE:HG12	2.17	0.43
4:T:62:LEU:O	4:T:66:ILE:HG23	2.19	0.43
3:D:79:ARG:NH2	3:H:71:GLU:OE1	2.51	0.43
5:I:210:DA:H2''	5:I:211:DC:C5	2.54	0.43
1:A:94:GLU:OE2	2:G:104:GLN:N	2.46	0.42
5:I:49:DC:H1'	5:I:50:DC:C5	2.54	0.42
5:I:82:DC:H1'	5:I:83:DG:C8	2.54	0.42
6:J:171:DT:C2'	6:J:172:DT:H71	2.48	0.42
6:J:224:DC:N3	6:J:225:DG:O6	2.51	0.42
4:S:30:THR:OG1	4:S:31:LYS:N	2.52	0.42
6:J:161:DG:C2	6:J:162:DG:C5	3.07	0.42
1:K:64:LYS:HG3	1:K:65:LEU:N	2.33	0.42
3:R:93:GLU:OE1	3:R:93:GLU:N	2.50	0.42
3:R:108:LYS:O	3:R:111:VAL:HG12	2.19	0.42
2:L:15:LYS:O	2:L:20:ARG:NH2	2.53	0.42
1:E:118:THR:HG23	1:E:120:MET:HE1	2.01	0.42
6:J:215:DT:N3	6:J:216:DG:O6	2.52	0.42
2:G:62:ILE:HG21	3:H:62:MET:HE1	2.00	0.42
1:E:73:GLU:OE1	4:F:25:ASN:ND2	2.48	0.42
6:J:83:DT:C2	6:J:84:DG:N7	2.88	0.42
2:Q:79:ILE:HB	2:Q:80:PRO:CD	2.49	0.42
3:R:76:GLU:OE2	3:R:80:LEU:HG	2.19	0.42
4:S:60:VAL:O	4:S:63:GLU:HG2	2.20	0.42
2:C:73:ASN:OD1	2:C:73:ASN:O	2.37	0.42
6:J:143:DT:H2'	6:J:144:DC:C4	2.55	0.42
6:J:162:DG:C4	6:J:163:DC:C5	3.07	0.42
2:Q:58:LEU:HD12	2:Q:59:THR:N	2.35	0.42
4:T:72:TYR:O	4:T:75:HIS:HB3	2.20	0.42
5:I:143:DC:H2''	5:I:144:DC:O2	2.19	0.42

*Continued on next page...*

*Continued from previous page...*

Atom-1	Atom-2	Interatomic distance (Å)	Clash overlap (Å)
2:C:61:GLU:O	2:C:65:LEU:HD13	2.20	0.42
5:I:89:DT:H2''	5:I:90:DT:H71	2.00	0.42
1:O:126:LEU:HD12	1:O:127:ALA:N	2.35	0.42
5:I:169:DC:H2''	5:I:170:DA:N7	2.35	0.42
4:B:49:LEU:H	4:B:49:LEU:HD23	1.84	0.42
2:L:80:PRO:CG	3:R:57:LYS:HE2	2.50	0.41
1:O:104:PHE:HZ	4:T:43:VAL:HG21	1.85	0.41
1:E:126:LEU:O	1:E:130:ILE:HG12	2.20	0.41
3:D:45:LEU:HB2	2:C:63:LEU:HD21	2.01	0.41
6:J:191:DC:C2	6:J:192:DA:N7	2.88	0.41
7:M:74:THR:HG23	7:M:75:LEU:N	2.34	0.41
1:E:64:LYS:H	1:E:64:LYS:HD3	1.86	0.41
5:I:71:DG:H4'	5:I:72:DA:OP1	2.20	0.41
5:I:181:DG:H4'	5:I:182:DA:OP1	2.20	0.41
6:J:180:DG:C4	6:J:181:DA:C8	3.09	0.41
6:J:183:DA:C2	6:J:184:DG:C6	3.08	0.41
6:J:221:DC:H2''	6:J:222:DC:C6	2.55	0.41
7:M:31:ILE:HD11	7:M:60:VAL:HB	2.02	0.41
2:L:81:ARG:NH1	2:L:85:LEU:HD21	2.35	0.41
7:M:60:VAL:O	7:M:68:ASN:ND2	2.43	0.41
7:M:83:VAL:CG1	7:M:86:LEU:HD23	2.48	0.41
1:K:48:LEU:O	1:K:51:ILE:HG13	2.21	0.41
1:O:50:GLU:OE1	4:T:40:ARG:NH2	2.54	0.41
1:K:126:LEU:O	1:K:130:ILE:CD1	2.69	0.41
4:S:36:ARG:HG3	4:S:39:ARG:NH1	2.35	0.41
4:S:60:VAL:O	4:S:64:ASN:OD1	2.38	0.41
4:B:53:GLU:HA	4:B:53:GLU:OE2	2.21	0.41
5:I:74:DA:C2	6:J:216:DG:N1	2.88	0.41
5:I:257:DC:H2'	5:I:258:DT:H71	2.02	0.41
5:I:261:DA:H2''	5:I:262:DG:N7	2.35	0.41
3:P:45:LEU:HD13	3:P:54:ILE:HD11	2.02	0.41
2:Q:53:ALA:HA	2:Q:56:GLU:HG2	2.03	0.41
3:R:38:SER:O	3:R:41:VAL:HG12	2.21	0.41
2:G:47:ALA:HB3	2:G:48:PRO:HD3	2.03	0.41
1:K:97:GLU:O	1:K:101:VAL:HG12	2.21	0.41
5:I:144:DC:O2	5:I:144:DC:H2'	2.21	0.41
1:K:109:LEU:HD11	1:O:130:ILE:HD11	2.02	0.41
1:O:48:LEU:O	1:O:51:ILE:HG22	2.21	0.41
3:P:42:TYR:HB3	3:P:46:LYS:HZ3	1.86	0.41
2:Q:73:ASN:OD1	2:Q:73:ASN:O	2.39	0.41
1:E:44:GLY:O	1:E:48:LEU:HD13	2.22	0.40

*Continued on next page...*

Continued from previous page...

Atom-1	Atom-2	Interatomic distance (Å)	Clash overlap (Å)
5:I:83:DG:H2'	5:I:84:DT:H72	2.03	0.40
5:I:128:DC:H2'	5:I:129:DT:H71	2.02	0.40
5:I:226:DG:H2'	5:I:227:DT:H72	2.02	0.40
6:J:140:DT:H2'	6:J:141:DT:C7	2.51	0.40
6:J:269:DT:H2''	6:J:270:DC:C5	2.56	0.40
2:Q:61:GLU:O	2:Q:64:GLU:HG3	2.21	0.40
6:J:273:DA:H2''	6:J:274:DT:H5'	2.04	0.40
3:P:42:TYR:HB3	3:P:46:LYS:NZ	2.36	0.40
5:I:71:DG:H1'	5:I:72:DA:N7	2.36	0.40
2:L:26:PRO:HG3	3:R:40:TYR:CE2	2.56	0.40
1:O:74:ILE:HG22	4:T:66:ILE:HD11	2.03	0.40
5:I:31:DG:P	2:Q:32:ARG:HD2	2.61	0.40
3:P:38:SER:O	3:P:42:TYR:CD2	2.75	0.40
3:P:40:TYR:HA	3:P:43:LYS:HE3	2.02	0.40
4:S:37:LEU:HA	4:S:40:ARG:NH1	2.37	0.40
8:N:36:LEU:HD23	8:N:36:LEU:C	2.47	0.40
1:O:99:TYR:CE1	1:O:103:LEU:HD21	2.57	0.40
1:O:121:PRO:O	1:O:125:GLN:OE1	2.40	0.40
2:Q:62:ILE:HG13	2:Q:63:LEU:N	2.36	0.40

There are no symmetry-related clashes.

## 5.3 Torsion angles

### 5.3.1 Protein backbone

In the following table, the Percentiles column shows the percent Ramachandran outliers of the chain as a percentile score with respect to all PDB entries followed by that with respect to all EM entries.

The Analysed column shows the number of residues for which the backbone conformation was analysed, and the total number of residues.

Mol	Chain	Analysed	Favoured	Allowed	Outliers	Percentiles	
1	A	95/136 (70%)	93 (98%)	2 (2%)	0	100	100
1	E	93/136 (68%)	92 (99%)	1 (1%)	0	100	100
1	K	94/136 (69%)	90 (96%)	4 (4%)	0	100	100
1	O	93/136 (68%)	90 (97%)	3 (3%)	0	100	100
2	C	102/128 (80%)	100 (98%)	2 (2%)	0	100	100

Continued on next page...

*Continued from previous page...*

Mol	Chain	Analysed	Favoured	Allowed	Outliers	Percentiles	
2	G	102/128 (80%)	102 (100%)	0	0	100	100
2	L	102/128 (80%)	101 (99%)	1 (1%)	0	100	100
2	Q	102/128 (80%)	102 (100%)	0	0	100	100
3	D	91/126 (72%)	89 (98%)	2 (2%)	0	100	100
3	H	91/126 (72%)	91 (100%)	0	0	100	100
3	P	91/126 (72%)	89 (98%)	2 (2%)	0	100	100
3	R	90/126 (71%)	90 (100%)	0	0	100	100
4	B	80/103 (78%)	78 (98%)	2 (2%)	0	100	100
4	F	77/103 (75%)	76 (99%)	1 (1%)	0	100	100
4	S	79/103 (77%)	76 (96%)	3 (4%)	0	100	100
4	T	80/103 (78%)	76 (95%)	4 (5%)	0	100	100
7	M	95/326 (29%)	91 (96%)	4 (4%)	0	100	100
8	N	98/336 (29%)	95 (97%)	3 (3%)	0	100	100
All	All	1655/2634 (63%)	1621 (98%)	34 (2%)	0	100	100

There are no Ramachandran outliers to report.

### 5.3.2 Protein sidechains ⓘ

In the following table, the Percentiles column shows the percent sidechain outliers of the chain as a percentile score with respect to all PDB entries followed by that with respect to all EM entries.

The Analysed column shows the number of residues for which the sidechain conformation was analysed, and the total number of residues.

Mol	Chain	Analysed	Rotameric	Outliers	Percentiles	
1	A	84/111 (76%)	84 (100%)	0	100	100
1	E	83/111 (75%)	83 (100%)	0	100	100
1	K	84/111 (76%)	84 (100%)	0	100	100
1	O	83/111 (75%)	83 (100%)	0	100	100
2	C	81/98 (83%)	81 (100%)	0	100	100
2	G	81/98 (83%)	81 (100%)	0	100	100
2	L	81/98 (83%)	81 (100%)	0	100	100
2	Q	81/98 (83%)	81 (100%)	0	100	100

*Continued on next page...*

*Continued from previous page...*

Mol	Chain	Analysed	Rotameric	Outliers	Percentiles	
3	D	79/106 (74%)	79 (100%)	0	100	100
3	H	79/106 (74%)	79 (100%)	0	100	100
3	P	79/106 (74%)	79 (100%)	0	100	100
3	R	78/106 (74%)	78 (100%)	0	100	100
4	B	67/79 (85%)	67 (100%)	0	100	100
4	F	64/79 (81%)	64 (100%)	0	100	100
4	S	66/79 (84%)	66 (100%)	0	100	100
4	T	67/79 (85%)	67 (100%)	0	100	100
7	M	91/296 (31%)	91 (100%)	0	100	100
8	N	94/297 (32%)	94 (100%)	0	100	100
All	All	1422/2169 (66%)	1422 (100%)	0	100	100

There are no protein residues with a non-rotameric sidechain to report.

Sometimes sidechains can be flipped to improve hydrogen bonding and reduce clashes. All (17) such sidechains are listed below:

Mol	Chain	Res	Type
1	A	113	HIS
1	E	108	ASN
3	D	95	GLN
3	H	84	ASN
4	B	93	GLN
4	F	75	HIS
7	M	13	ASN
7	M	36	HIS
2	L	31	HIS
2	L	38	ASN
3	P	47	GLN
3	P	82	HIS
2	Q	31	HIS
2	Q	38	ASN
3	R	109	HIS
4	S	25	ASN
4	T	75	HIS

### 5.3.3 RNA ⓘ

There are no RNA molecules in this entry.

## 5.4 Non-standard residues in protein, DNA, RNA chains ⓘ

There are no non-standard protein/DNA/RNA residues in this entry.

## 5.5 Carbohydrates ⓘ

There are no oligosaccharides in this entry.

## 5.6 Ligand geometry ⓘ

Of 4 ligands modelled in this entry, 4 are monoatomic - leaving 0 for Mogul analysis.

There are no bond length outliers.

There are no bond angle outliers.

There are no chirality outliers.

There are no torsion outliers.

There are no ring outliers.

No monomer is involved in short contacts.

## 5.7 Other polymers ⓘ

There are no such residues in this entry.

## 5.8 Polymer linkage issues ⓘ

There are no chain breaks in this entry.



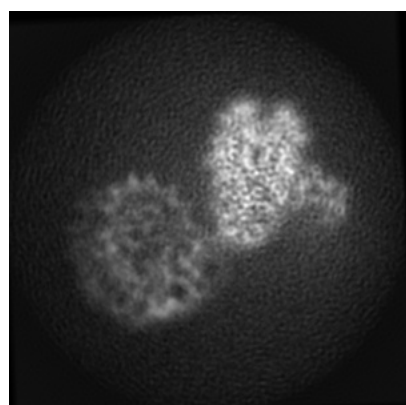
## 6 Map visualisation [i](#)

This section contains visualisations of the EMDB entry EMD-64845. These allow visual inspection of the internal detail of the map and identification of artifacts.

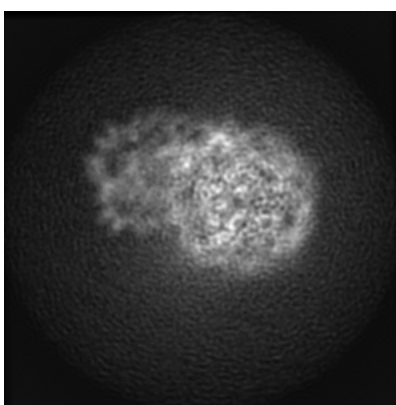
No raw map or half-maps were deposited for this entry and therefore no images, graphs, etc. pertaining to the raw map can be shown.

### 6.1 Orthogonal projections [i](#)

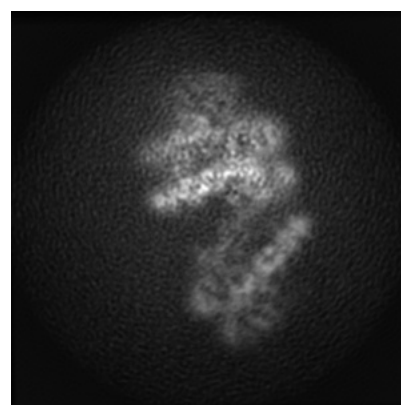
#### 6.1.1 Primary map



X



Y

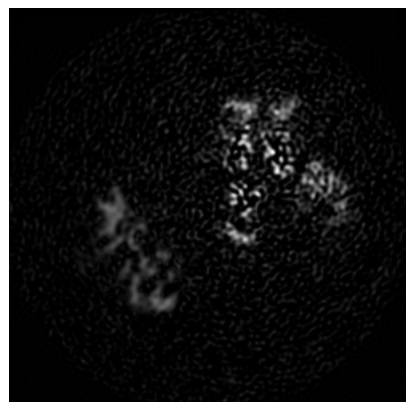


Z

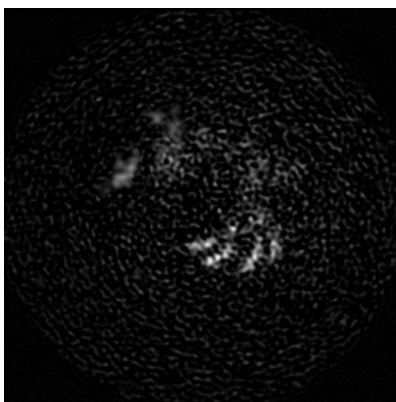
The images above show the map projected in three orthogonal directions.

### 6.2 Central slices [i](#)

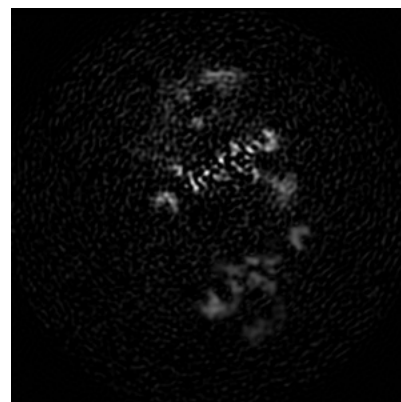
#### 6.2.1 Primary map



X Index: 120



Y Index: 120

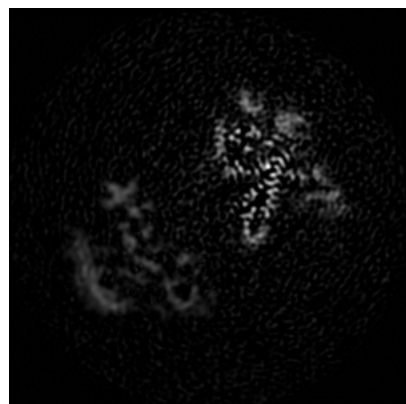


Z Index: 120

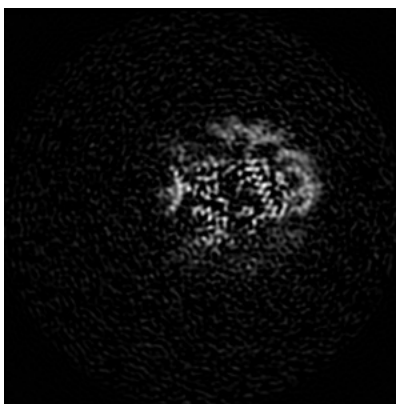
The images above show central slices of the map in three orthogonal directions.

## 6.3 Largest variance slices [i](#)

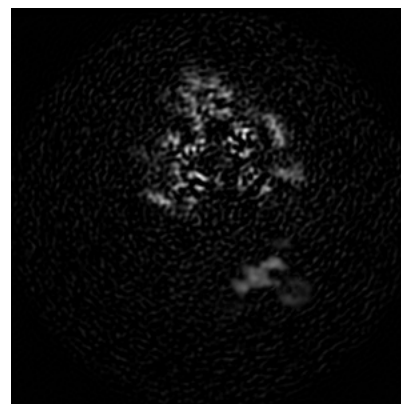
### 6.3.1 Primary map



X Index: 132



Y Index: 142

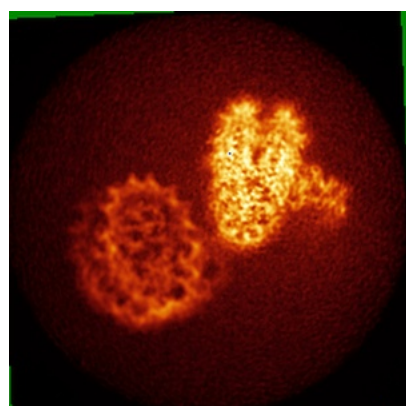


Z Index: 136

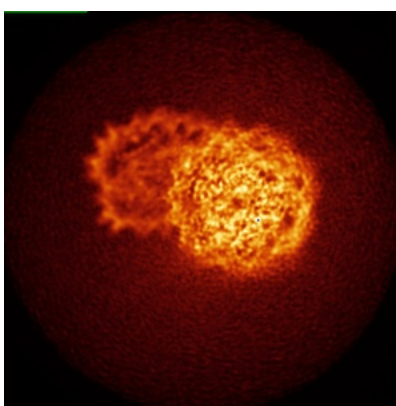
The images above show the largest variance slices of the map in three orthogonal directions.

## 6.4 Orthogonal standard-deviation projections (False-color) [i](#)

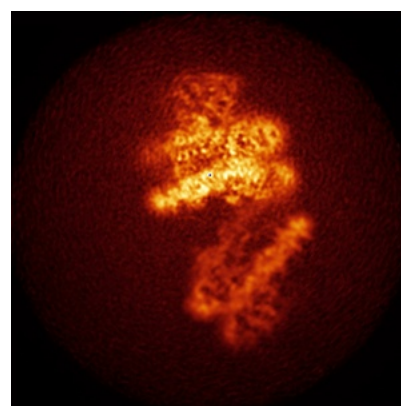
### 6.4.1 Primary map



X



Y



Z

The images above show the map standard deviation projections with false color in three orthogonal directions. Minimum values are shown in green, max in blue, and dark to light orange shades represent small to large values respectively.

## 6.5 Orthogonal surface views [i](#)

### 6.5.1 Primary map



The images above show the 3D surface view of the map at the recommended contour level 0.007. These images, in conjunction with the slice images, may facilitate assessment of whether an appropriate contour level has been provided.

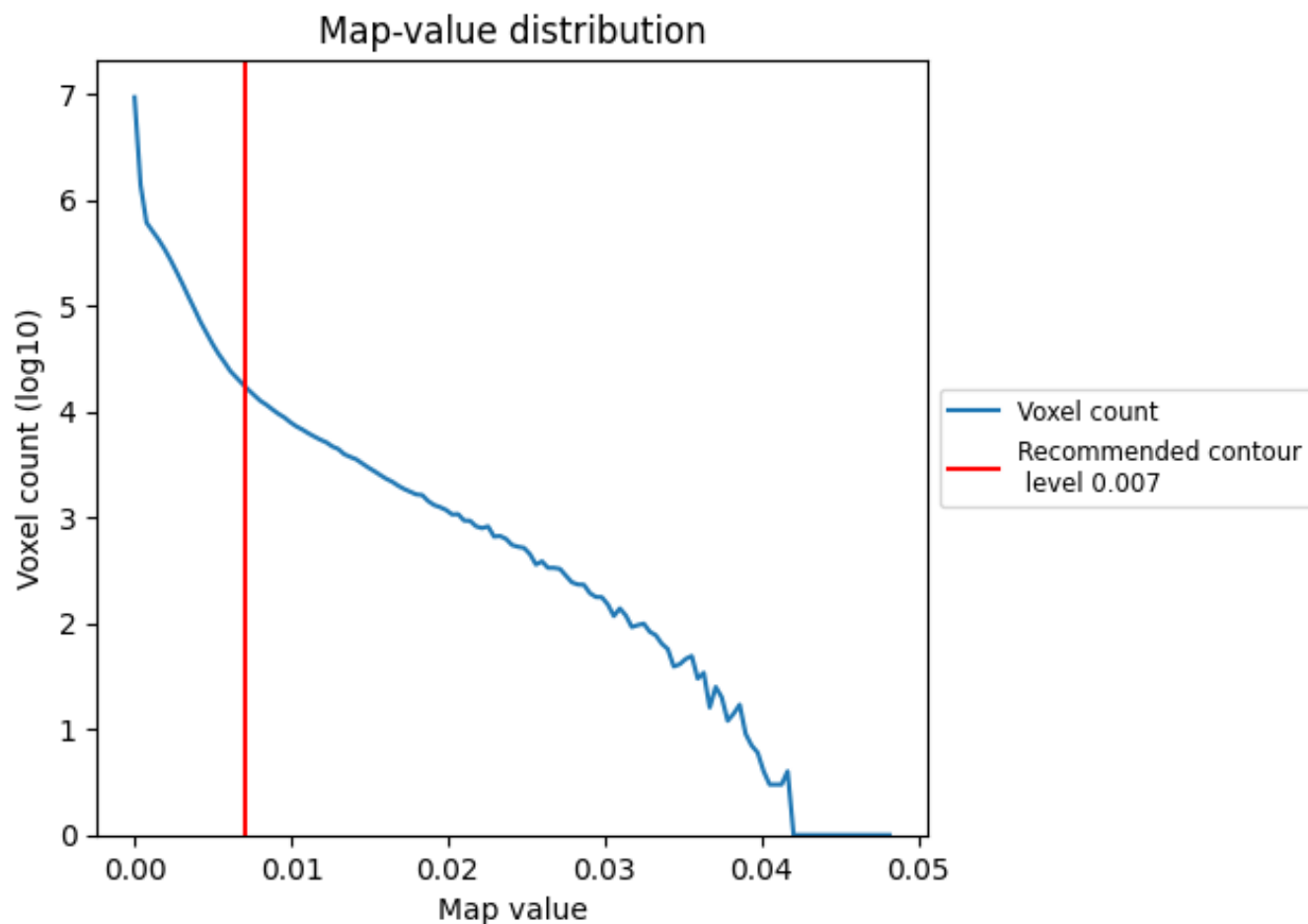
## 6.6 Mask visualisation [i](#)

This section was not generated. No masks/segmentation were deposited.

## 7 Map analysis [i](#)

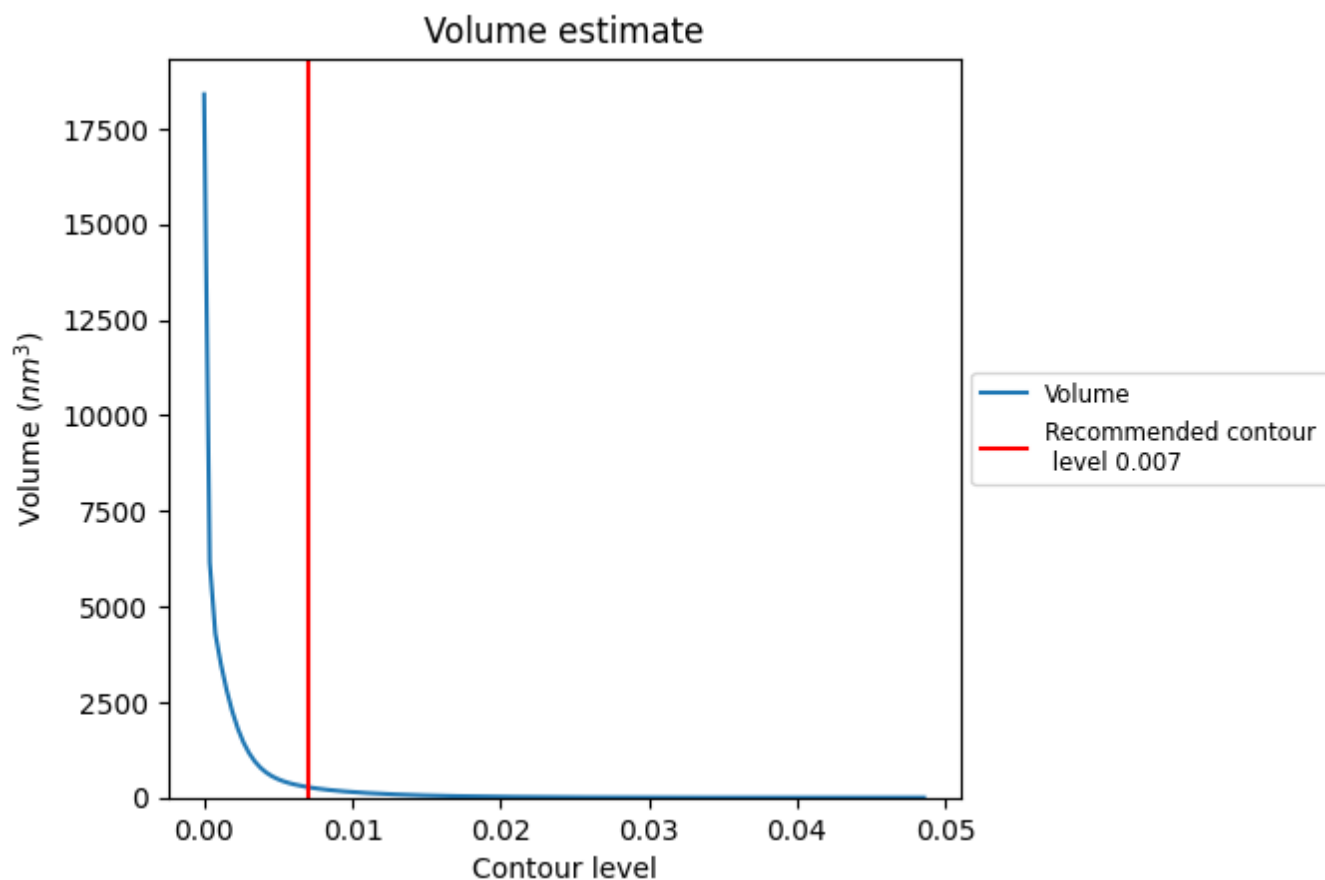
This section contains the results of statistical analysis of the map.

### 7.1 Map-value distribution [i](#)



The map-value distribution is plotted in 128 intervals along the x-axis. The y-axis is logarithmic. A spike in this graph at zero usually indicates that the volume has been masked.

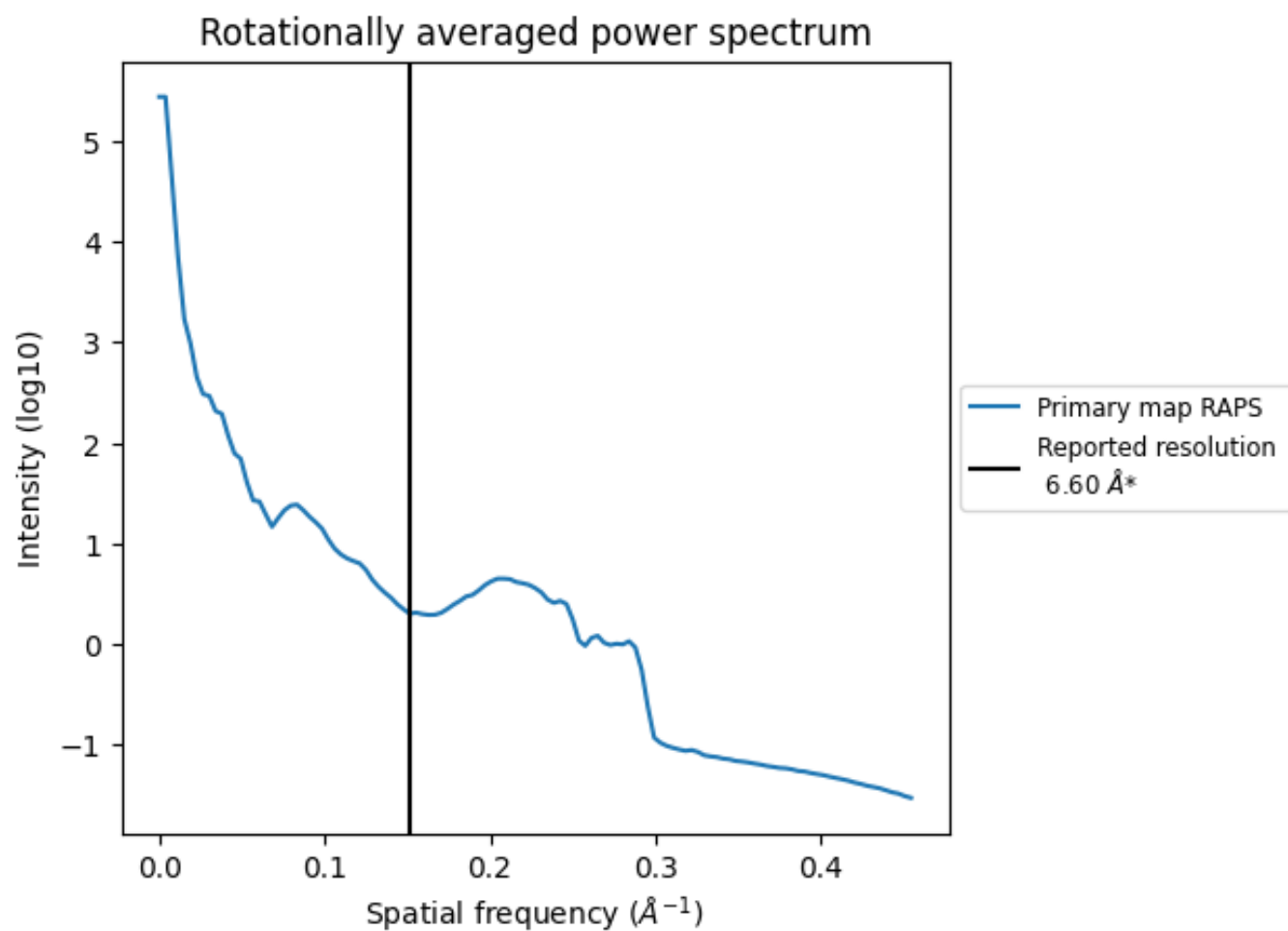
## 7.2 Volume estimate [i](#)



The volume at the recommended contour level is 273 nm<sup>3</sup>; this corresponds to an approximate mass of 247 kDa.

The volume estimate graph shows how the enclosed volume varies with the contour level. The recommended contour level is shown as a vertical line and the intersection between the line and the curve gives the volume of the enclosed surface at the given level.

### 7.3 Rotationally averaged power spectrum ⓘ



\*Reported resolution corresponds to spatial frequency of 0.152 Å<sup>-1</sup>

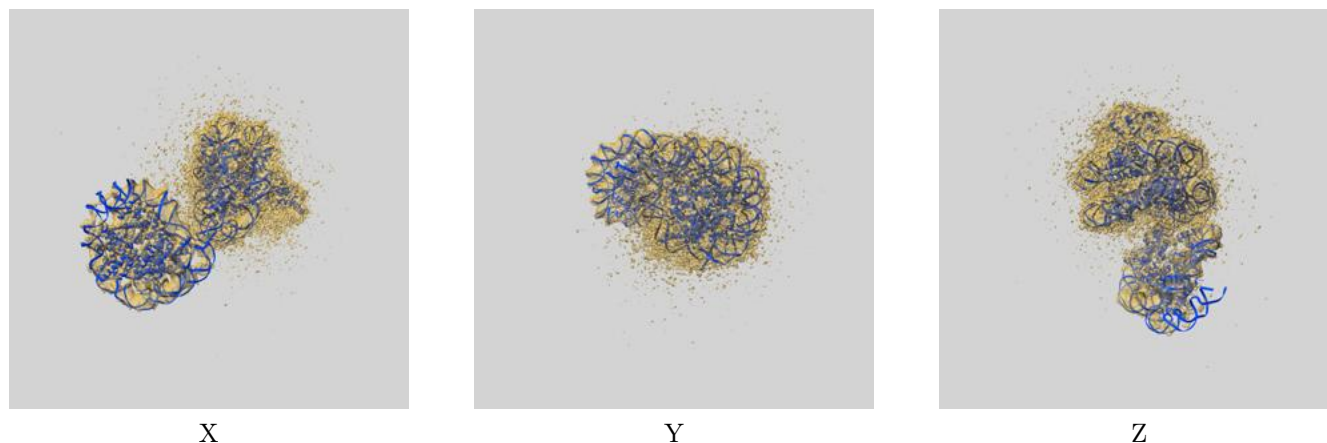
## 8 Fourier-Shell correlation ⓘ

This section was not generated. No FSC curve or half-maps provided.

## 9 Map-model fit [i](#)

This section contains information regarding the fit between EMDB map EMD-64845 and PDB model 9V8L. Per-residue inclusion information can be found in [section 3](#) on [page 6](#).

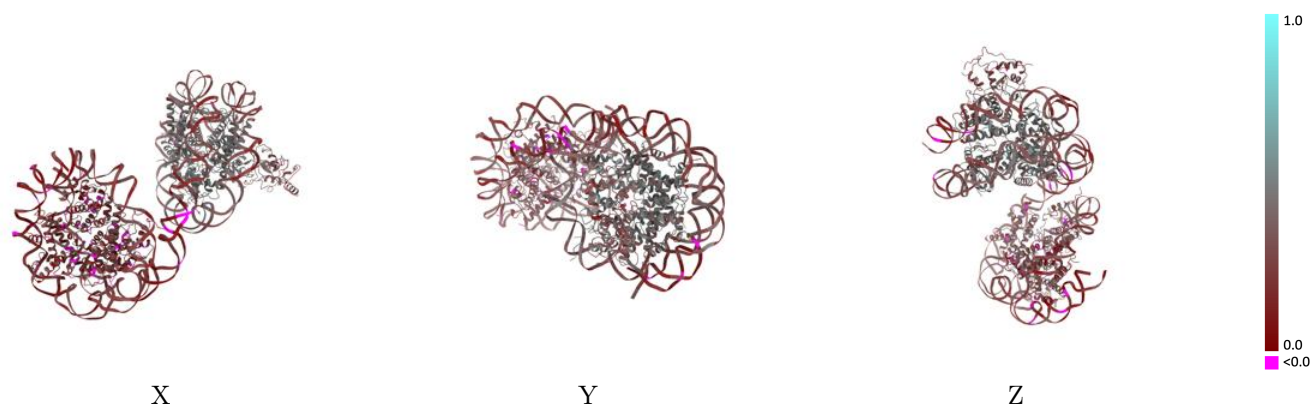
### 9.1 Map-model overlay [i](#)



The images above show the 3D surface view of the map at the recommended contour level 0.007 at 50% transparency in yellow overlaid with a ribbon representation of the model coloured in blue. These images allow for the visual assessment of the quality of fit between the atomic model and the map.

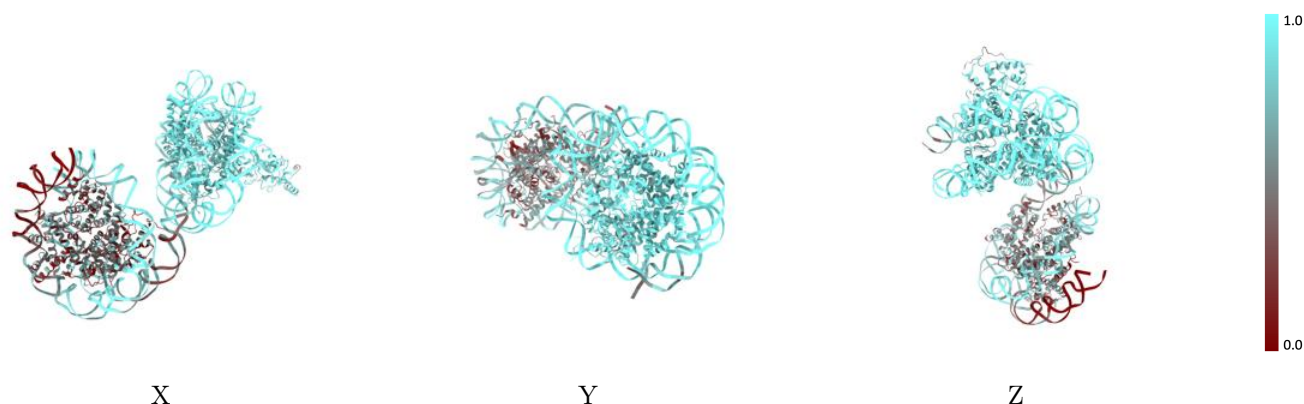


## 9.2 Q-score mapped to coordinate model [i](#)



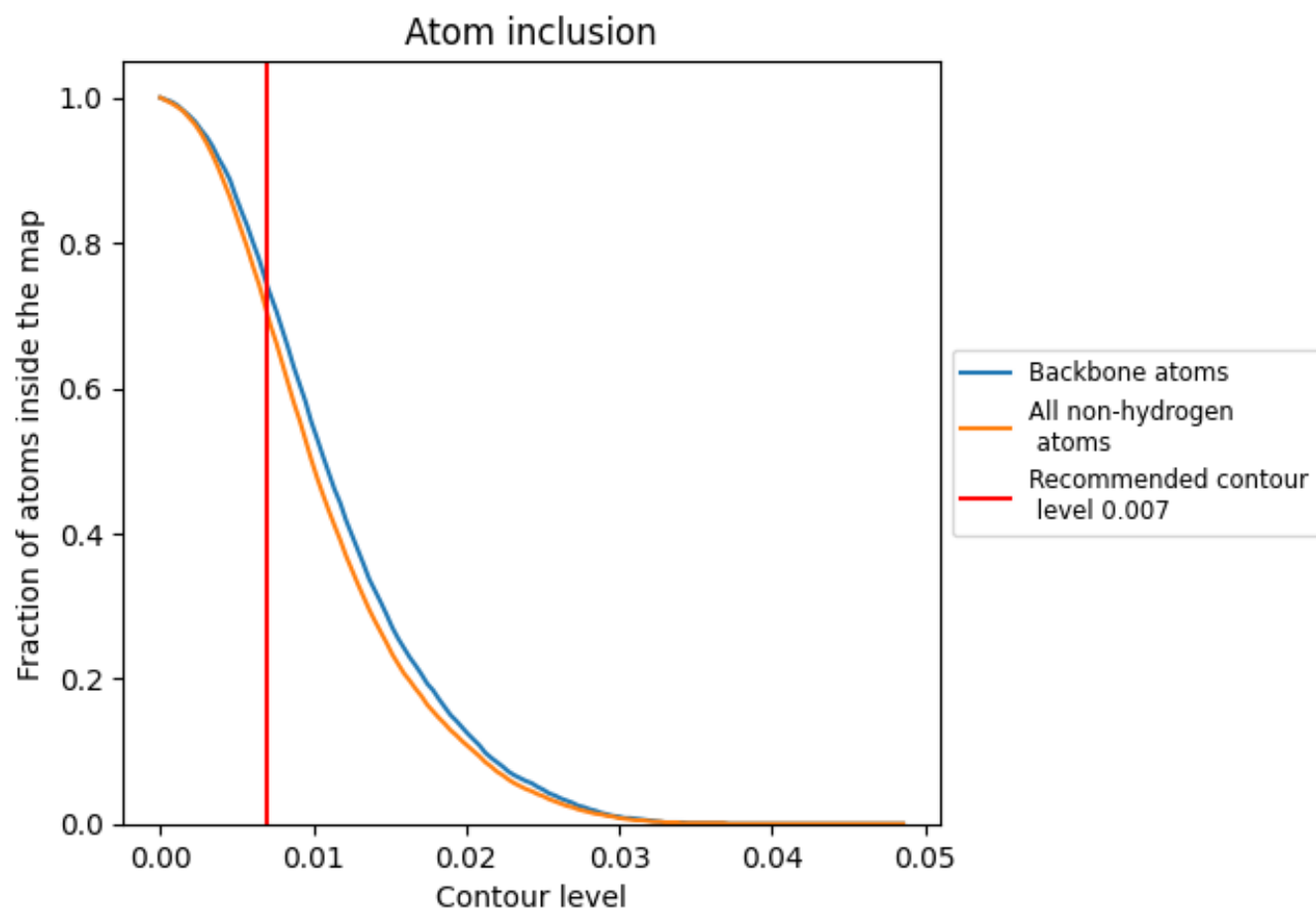
The images above show the model with each residue coloured according its Q-score. This shows their resolvability in the map with higher Q-score values reflecting better resolvability. Please note: Q-score is calculating the resolvability of atoms, and thus high values are only expected at resolutions at which atoms can be resolved. Low Q-score values may therefore be expected for many entries.

## 9.3 Atom inclusion mapped to coordinate model [i](#)



The images above show the model with each residue coloured according to its atom inclusion. This shows to what extent they are inside the map at the recommended contour level (0.007).








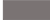


































## 9.4 Atom inclusion [i](#)



At the recommended contour level, 74% of all backbone atoms, 70% of all non-hydrogen atoms, are inside the map.

## 9.5 Map-model fit summary

The table lists the average atom inclusion at the recommended contour level (0.007) and Q-score for the entire model and for each chain.

Chain	Atom inclusion	Q-score
All	 0.7020	 0.2910
A	 0.9050	 0.4470
B	 0.9220	 0.4620
C	 0.9260	 0.4510
D	 0.9390	 0.4320
E	 0.9220	 0.4650
F	 0.9200	 0.4630
G	 0.9210	 0.4660
H	 0.9380	 0.4240
I	 0.7710	 0.2390
J	 0.7660	 0.2400
K	 0.4000	 0.2230
L	 0.3550	 0.2330
M	 0.8740	 0.3270
N	 0.8250	 0.3270
O	 0.4090	 0.2110
P	 0.3820	 0.1890
Q	 0.3660	 0.2210
R	 0.4620	 0.2080
S	 0.4410	 0.2260
T	 0.4590	 0.2240

