



# Full wwPDB X-ray Structure Validation Report ⓘ

Sep 4, 2023 – 10:59 PM EDT

PDB ID : 3V7X  
Title : Complex of human carbonic anhydrase II with N-[2-(3,4-dimethoxyphenyl)ethyl]-4-sulfamoylbenzamide  
Authors : Mader, P.; Brynda, J.; Rezacova, P.  
Deposited on : 2011-12-22  
Resolution : 1.03 Å(reported)

This is a Full wwPDB X-ray Structure Validation Report for a publicly released PDB entry.

We welcome your comments at [validation@mail.wwpdb.org](mailto:validation@mail.wwpdb.org)

A user guide is available at

<https://www.wwpdb.org/validation/2017/XrayValidationReportHelp>

with specific help available everywhere you see the ⓘ symbol.

The types of validation reports are described at

<http://www.wwpdb.org/validation/2017/FAQs#types>.

---

The following versions of software and data (see [references ⓘ](#)) were used in the production of this report:

MolProbity : 4.02b-467  
Mogul : 1.8.5 (274361), CSD as541be (2020)  
Xtriage (Phenix) : 1.13  
EDS : 2.35  
buster-report : 1.1.7 (2018)  
Percentile statistics : 20191225.v01 (using entries in the PDB archive December 25th 2019)  
Refmac : 5.8.0158  
CCP4 : 7.0.044 (Gargrove)  
Ideal geometry (proteins) : Engh & Huber (2001)  
Ideal geometry (DNA, RNA) : Parkinson et al. (1996)  
Validation Pipeline (wwPDB-VP) : 2.35

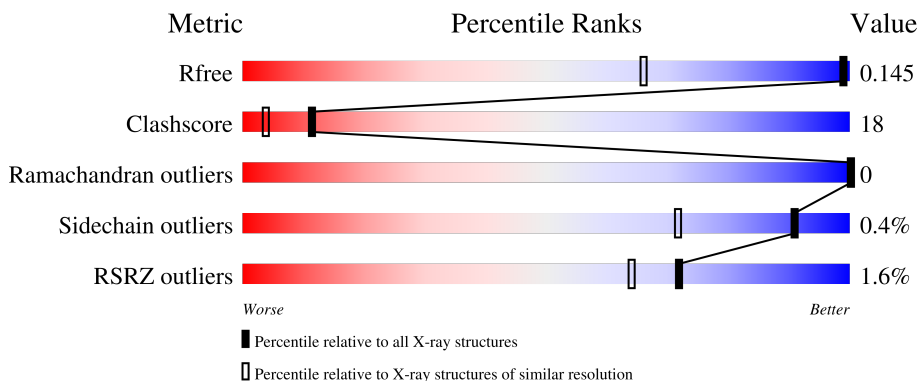
# 1 Overall quality at a glance

The following experimental techniques were used to determine the structure:

*X-RAY DIFFRACTION*

The reported resolution of this entry is 1.03 Å.

Percentile scores (ranging between 0-100) for global validation metrics of the entry are shown in the following graphic. The table shows the number of entries on which the scores are based.



Metric	Whole archive (#Entries)	Similar resolution (#Entries, resolution range(Å))
$R_{free}$	130704	1596 (1.10-0.98)
Clashscore	141614	1677 (1.10-0.98)
Ramachandran outliers	138981	1591 (1.10-0.98)
Sidechain outliers	138945	1589 (1.10-0.98)
RSRZ outliers	127900	1557 (1.10-0.98)

The table below summarises the geometric issues observed across the polymeric chains and their fit to the electron density. The red, orange, yellow and green segments of the lower bar indicate the fraction of residues that contain outliers for  $\geq 3$ , 2, 1 and 0 types of geometric quality criteria respectively. A grey segment represents the fraction of residues that are not modelled. The numeric value for each fraction is indicated below the corresponding segment, with a dot representing fractions  $\leq 5\%$ . The upper red bar (where present) indicates the fraction of residues that have poor fit to the electron density. The numeric value is given above the bar.

Mol	Chain	Length	Quality of chain
1	A	259	

The following table lists non-polymeric compounds, carbohydrate monomers and non-standard residues in protein, DNA, RNA chains that are outliers for geometric or electron-density-fit criteria:

Mol	Type	Chain	Res	Chirality	Geometry	Clashes	Electron density
4	GOL	A	2004[A]	-	-	X	-

*Continued on next page...*

*Continued from previous page...*

<b>Mol</b>	<b>Type</b>	<b>Chain</b>	<b>Res</b>	<b>Chirality</b>	<b>Geometry</b>	<b>Clashes</b>	<b>Electron density</b>
4	GOL	A	2004[B]	-	-	X	-
4	GOL	A	2006	-	X	-	-
5	MBO	A	2008[A]	-	-	X	-
5	MBO	A	2008[B]	-	-	X	-
5	MBO	A	2009	-	-	X	-
5	MBO	A	2010	-	-	X	-

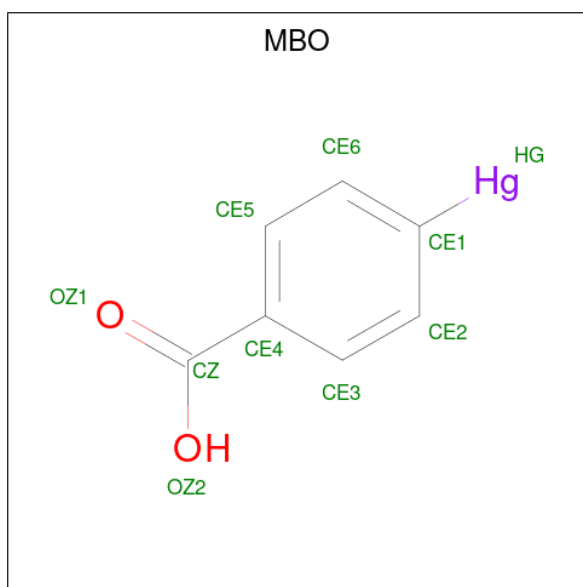


- Molecule 4 is GLYCEROL (three-letter code: GOL) (formula:  $C_3H_8O_3$ ).



Mol	Chain	Residues	Atoms	ZeroOcc	AltConf
4	A	1	Total C O 6 3 3	0	1
4	A	1	Total C O 12 6 6	0	1
4	A	1	Total C O 6 3 3	0	0
4	A	1	Total C O 6 3 3	0	0
4	A	1	Total C O 6 3 3	0	0

- Molecule 5 is MERCURIBENZOIC ACID (three-letter code: MBO) (formula:  $C_7H_5HgO_2$ ).



Mol	Chain	Residues	Atoms				ZeroOcc	AltConf
5	A	1	Total	C	Hg	O	0	1
			20	14	2	4		
5	A	1	Total	C	Hg	O	0	0
			10	7	1	2		
5	A	1	Total	C	Hg	O	0	0
			10	7	1	2		
5	A	1	Total	Hg			0	0
			1	1				

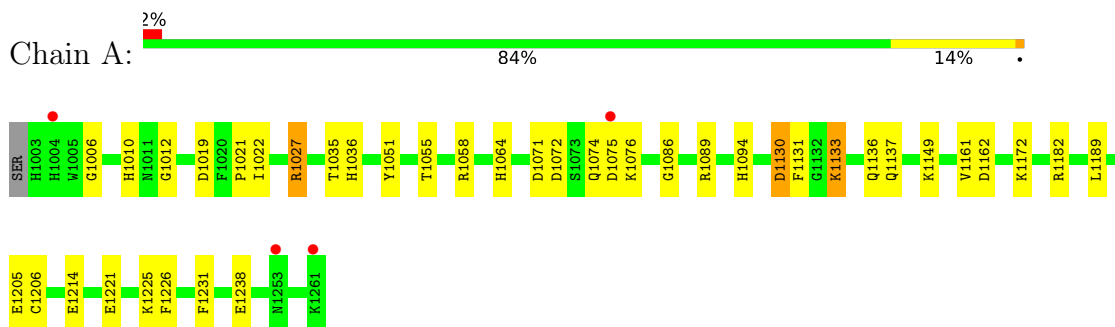
- Molecule 6 is water.

Mol	Chain	Residues	Atoms		ZeroOcc	AltConf
6	A	347	Total	O	0	15
			361	361		

### 3 Residue-property plots [i](#)

These plots are drawn for all protein, RNA, DNA and oligosaccharide chains in the entry. The first graphic for a chain summarises the proportions of the various outlier classes displayed in the second graphic. The second graphic shows the sequence view annotated by issues in geometry and electron density. Residues are color-coded according to the number of geometric quality criteria for which they contain at least one outlier: green = 0, yellow = 1, orange = 2 and red = 3 or more. A red dot above a residue indicates a poor fit to the electron density ( $RSRZ > 2$ ). Stretches of 2 or more consecutive residues without any outlier are shown as a green connector. Residues present in the sample, but not in the model, are shown in grey.

- Molecule 1: Carbonic anhydrase 2



## 4 Data and refinement statistics i

Property	Value	Source
Space group	P 1 21 1	Depositor
Cell constants a, b, c, $\alpha$ , $\beta$ , $\gamma$	42.14Å 41.51Å 71.84Å 90.00° 104.23° 90.00°	Depositor
Resolution (Å)	10.00 – 1.03 15.47 – 1.03	Depositor EDS
% Data completeness (in resolution range)	(Not available) (10.00-1.03) 99.8 (15.47-1.03)	Depositor EDS
$R_{merge}$	0.06	Depositor
$R_{sym}$	0.06	Depositor
$\langle I/\sigma(I) \rangle$ <sup>1</sup>	2.00 (at 1.03Å)	Xtrriage
Refinement program	SHELXL-97	Depositor
R, $R_{free}$	0.117 , 0.148 0.118 , 0.145	Depositor DCC
$R_{free}$ test set	5916 reflections (5.01%)	wwPDB-VP
Wilson B-factor (Å <sup>2</sup> )	8.5	Xtrriage
Anisotropy	0.392	Xtrriage
Bulk solvent $k_{sol}$ (e/Å <sup>3</sup> ), $B_{sol}$ (Å <sup>2</sup> )	0.38 , 68.6	EDS
L-test for twinning <sup>2</sup>	$\langle  L  \rangle = 0.49$ , $\langle L^2 \rangle = 0.32$	Xtrriage
Estimated twinning fraction	0.025 for h,-k,-h-l	Xtrriage
$F_o, F_c$ correlation	0.98	EDS
Total number of atoms	2656	wwPDB-VP
Average B, all atoms (Å <sup>2</sup> )	16.0	wwPDB-VP

Xtrriage's analysis on translational NCS is as follows: *The largest off-origin peak in the Patterson function is 7.70% of the height of the origin peak. No significant pseudotranslation is detected.*

<sup>1</sup>Intensities estimated from amplitudes.

<sup>2</sup>Theoretical values of  $\langle |L| \rangle$ ,  $\langle L^2 \rangle$  for acentric reflections are 0.5, 0.333 respectively for untwinned datasets, and 0.375, 0.2 for perfectly twinned datasets.



## 5 Model quality i

### 5.1 Standard geometry i

Bond lengths and bond angles in the following residue types are not validated in this section: GOL, D7A, ZN, MBO

The Z score for a bond length (or angle) is the number of standard deviations the observed value is removed from the expected value. A bond length (or angle) with  $|Z| > 5$  is considered an outlier worth inspection. RMSZ is the root-mean-square of all Z scores of the bond lengths (or angles).

Mol	Chain	Bond lengths		Bond angles	
		RMSZ	# Z  >5	RMSZ	# Z  >5
1	A	0.76	0/2349	1.28	27/3182 (0.8%)

There are no bond length outliers.

All (27) bond angle outliers are listed below:

Mol	Chain	Res	Type	Atoms	Z	Observed(°)	Ideal(°)
1	A	1058	ARG	NE-CZ-NH1	9.07	124.84	120.30
1	A	1075	ASP	CB-CG-OD2	8.02	125.52	118.30
1	A	1226	PHE	CB-CG-CD1	8.00	126.40	120.80
1	A	1130[A]	ASP	CB-CG-OD1	7.22	124.80	118.30
1	A	1130[B]	ASP	CB-CG-OD1	7.22	124.80	118.30
1	A	1027[A]	ARG	NE-CZ-NH1	7.07	123.83	120.30
1	A	1027[B]	ARG	NE-CZ-NH1	7.07	123.83	120.30
1	A	1189	LEU	O-C-N	-6.83	111.78	122.70
1	A	1226	PHE	CB-CG-CD2	-6.68	116.12	120.80
1	A	1019	ASP	CB-CG-OD1	6.26	123.94	118.30
1	A	1027[A]	ARG	CG-CD-NE	6.25	124.93	111.80
1	A	1027[B]	ARG	CG-CD-NE	6.25	124.93	111.80
1	A	1133[A]	LYS	CD-CE-NZ	5.89	125.26	111.70
1	A	1133[B]	LYS	CD-CE-NZ	5.89	125.26	111.70
1	A	1221	GLU	OE1-CD-OE2	-5.89	116.23	123.30
1	A	1051	TYR	CB-CG-CD1	5.79	124.47	121.00
1	A	1162	ASP	CB-CG-OD2	-5.64	113.22	118.30
1	A	1182	ARG	NE-CZ-NH2	-5.35	117.63	120.30
1	A	1035	THR	C-N-CA	5.32	135.00	121.70
1	A	1036[A]	HIS	O-C-N	-5.18	114.41	122.70
1	A	1036[B]	HIS	O-C-N	-5.18	114.41	122.70
1	A	1055	THR	CA-CB-CG2	-5.14	105.20	112.40
1	A	1162	ASP	CB-CG-OD1	5.12	122.91	118.30
1	A	1071	ASP	CB-CG-OD2	-5.11	113.70	118.30

*Continued on next page...*

Continued from previous page...

Mol	Chain	Res	Type	Atoms	Z	Observed(°)	Ideal(°)
1	A	1072	ASP	CB-CG-OD1	5.09	122.88	118.30
1	A	1130[A]	ASP	CA-CB-CG	5.06	124.53	113.40
1	A	1130[B]	ASP	CA-CB-CG	5.06	124.53	113.40

There are no chirality outliers.

There are no planarity outliers.

## 5.2 Too-close contacts [i](#)

In the following table, the Non-H and H(model) columns list the number of non-hydrogen atoms and hydrogen atoms in the chain respectively. The H(added) column lists the number of hydrogen atoms added and optimized by MolProbity. The Clashes column lists the number of clashes within the asymmetric unit, whereas Symm-Clashes lists symmetry-related clashes.

Mol	Chain	Non-H	H(model)	H(added)	Clashes	Symm-Clashes
1	A	2179	0	2124	30	0
2	A	1	0	0	0	0
3	A	38	0	28	2	0
4	A	36	0	48	12	0
5	A	41	0	17	45	0
6	A	361	0	0	35	0
All	All	2656	0	2217	81	0

The all-atom clashscore is defined as the number of clashes found per 1000 atoms (including hydrogen atoms). The all-atom clashscore for this structure is 18.

All (81) close contacts within the same asymmetric unit are listed below, sorted by their clash magnitude.

Atom-1	Atom-2	Interatomic distance (Å)	Clash overlap (Å)
4:A:2004[A]:GOL:H12	6:A:6132:HOH:O	1.19	1.31
5:A:2008[A]:MBO:HE3	6:A:6268:HOH:O	1.66	1.29
5:A:2008[B]:MBO:HE6	5:A:2008[B]:MBO:CE5	2.03	1.26
5:A:2008[A]:MBO:HE3	5:A:2008[A]:MBO:CE4	2.04	1.23
5:A:2008[B]:MBO:HE6	5:A:2008[B]:MBO:CE1	2.04	1.22
5:A:2008[A]:MBO:CE4	5:A:2008[A]:MBO:HE5	2.06	1.21
5:A:2008[A]:MBO:HE6	5:A:2008[A]:MBO:CE1	2.08	1.21
5:A:2010:MBO:HE5	5:A:2010:MBO:CE4	2.07	1.21
5:A:2008[A]:MBO:HE3	5:A:2008[A]:MBO:CE2	2.08	1.21
5:A:2010:MBO:HE6	5:A:2010:MBO:CE1	2.08	1.20
4:A:2004[A]:GOL:C1	6:A:6132:HOH:O	1.65	1.20

Continued on next page...

*Continued from previous page...*

Atom-1	Atom-2	Interatomic distance (Å)	Clash overlap (Å)
5:A:2008[A]:MBO:HE5	5:A:2008[A]:MBO:CE6	2.08	1.20
5:A:2008[A]:MBO:HE6	5:A:2008[A]:MBO:CE5	2.09	1.19
5:A:2010:MBO:HE5	5:A:2010:MBO:CE6	2.10	1.19
5:A:2010:MBO:HE6	5:A:2010:MBO:CE5	2.11	1.17
1:A:1064[A]:HIS:NE2	6:A:6214:HOH:O	1.84	1.08
5:A:2008[A]:MBO:HE3	5:A:2008[A]:MBO:CE3	0.97	1.07
5:A:2010:MBO:HE5	5:A:2010:MBO:CE5	0.97	1.07
5:A:2010:MBO:HE6	5:A:2010:MBO:CE6	0.97	1.07
5:A:2008[A]:MBO:HE5	5:A:2008[A]:MBO:CE5	0.97	1.06
5:A:2008[A]:MBO:HE6	5:A:2008[A]:MBO:CE6	0.97	1.06
5:A:2008[B]:MBO:HE6	5:A:2008[B]:MBO:CE6	0.97	1.06
4:A:2004[B]:GOL:H11	6:A:6132:HOH:O	1.55	1.06
1:A:1076[A]:LYS:O	6:A:6314:HOH:O	1.74	1.04
1:A:1089[A]:ARG:HG3	6:A:6223:HOH:O	1.60	1.00
5:A:2008[A]:MBO:HE2	6:A:6268:HOH:O	1.19	0.98
5:A:2008[B]:MBO:HE6	6:A:6157:HOH:O	1.17	0.96
1:A:1133[A]:LYS:HG2	6:A:6227:HOH:O	1.63	0.96
1:A:1214[B]:GLU:OE2	6:A:6267:HOH:O	1.86	0.91
1:A:1133[B]:LYS:HD3	6:A:6345:HOH:O	1.71	0.89
4:A:2004[A]:GOL:H11	6:A:6132:HOH:O	1.47	0.88
1:A:1064[B]:HIS:CE1	5:A:2010:MBO:HE2	2.48	0.86
5:A:2008[B]:MBO:HE6	5:A:2008[B]:MBO:HE5	2.35	0.83
5:A:2008[A]:MBO:CE3	6:A:6268:HOH:O	1.89	0.83
1:A:1064[A]:HIS:CD2	6:A:6214:HOH:O	2.30	0.81
5:A:2008[A]:MBO:HE3	5:A:2008[A]:MBO:HE2	2.37	0.81
5:A:2008[A]:MBO:HE5	5:A:2008[A]:MBO:HE6	2.39	0.80
1:A:1010[A]:HIS:HB3	6:A:6260:HOH:O	1.85	0.76
1:A:1130[B]:ASP:HB2	6:A:6069[B]:HOH:O	1.86	0.74
1:A:1205:GLU:O	5:A:2008[A]:MBO:HE2	2.25	0.74
5:A:2010:MBO:HE5	5:A:2010:MBO:HE6	2.44	0.72
5:A:2010:MBO:HE5	5:A:2010:MBO:CZ	2.57	0.71
1:A:1089[A]:ARG:CG	6:A:6223:HOH:O	2.28	0.71
5:A:2008[B]:MBO:HE5	6:A:6189:HOH:O	2.32	0.68
1:A:1136:GLN:HA	5:A:2008[B]:MBO:HE6	2.14	0.67
5:A:2008[A]:MBO:HE3	5:A:2008[A]:MBO:CZ	2.61	0.67
5:A:2008[A]:MBO:HE5	5:A:2008[A]:MBO:CZ	2.64	0.66
5:A:2010:MBO:HE6	6:A:6238[B]:HOH:O	2.35	0.64
1:A:1137:GLN:O	1:A:1206[B]:CYS:HB3	1.98	0.64
5:A:2010:MBO:HE2	6:A:6161:HOH:O	2.36	0.63
1:A:1172:LYS:HE3	6:A:6196:HOH:O	1.99	0.62
5:A:2010:MBO:HE5	5:A:2010:MBO:OZ1	2.38	0.61

*Continued on next page...*

Continued from previous page...

Atom-1	Atom-2	Interatomic distance (Å)	Clash overlap (Å)
1:A:1231:PHE:CE2	5:A:2009:MBO:HE5	2.74	0.61
1:A:1064[A]:HIS:HE2	4:A:2004[A]:GOL:H31	1.66	0.60
1:A:1074:GLN:HG2	6:A:6286:HOH:O	2.04	0.58
1:A:1021[A]:PRO:HG3	4:A:2006:GOL:O2	2.06	0.56
5:A:2008[A]:MBO:HE5	5:A:2008[A]:MBO:OZ1	2.47	0.52
1:A:1010[B]:HIS:HB2	6:A:6120:HOH:O	2.09	0.52
5:A:2010:MBO:HE3	5:A:2010:MBO:OZ2	2.43	0.50
5:A:2009:MBO:HE5	5:A:2009:MBO:OZ2	2.42	0.50
1:A:1161:VAL:CG1	1:A:1225:LYS:HD2	2.43	0.48
4:A:2006:GOL:H32	6:A:6318:HOH:O	2.12	0.47
5:A:2008[A]:MBO:HE3	5:A:2008[A]:MBO:OZ2	2.52	0.46
1:A:1094:HIS:CG	4:A:2004[B]:GOL:H2	2.50	0.46
3:A:2002[B]:D7A:H7	3:A:2002[B]:D7A:OAR	2.14	0.46
1:A:1238:GLU:HG2	6:A:6340:HOH:O	2.16	0.46
5:A:2009:MBO:OZ1	5:A:2009:MBO:HE3	2.46	0.45
4:A:2004[B]:GOL:H32	6:A:6132:HOH:O	2.17	0.45
1:A:1027[B]:ARG:NH2	1:A:1205:GLU:O	2.50	0.45
5:A:2008[B]:MBO:HE5	5:A:2008[B]:MBO:OZ1	2.44	0.45
1:A:1086:GLY:HA3	6:A:6089[B]:HOH:O	2.17	0.44
1:A:1131:PHE:HE2	3:A:2002[B]:D7A:H9	1.84	0.43
4:A:2004[B]:GOL:C1	6:A:6132:HOH:O	2.33	0.43
1:A:1010[A]:HIS:HB3	6:A:6265:HOH:O	2.19	0.42
4:A:2006:GOL:H12	6:A:6032:HOH:O	2.18	0.42
4:A:2005:GOL:H31	6:A:6315:HOH:O	2.20	0.42
1:A:1022[A]:ILE:HD12	6:A:6142:HOH:O	2.20	0.42
5:A:2010:MBO:HE3	6:A:6161:HOH:O	2.58	0.42
1:A:1006:GLY:O	1:A:1012:GLY:HA2	2.21	0.41
1:A:1027[B]:ARG:HB3	1:A:1205:GLU:CD	2.41	0.40
5:A:2009:MBO:HE6	6:A:6059:HOH:O	2.58	0.40

There are no symmetry-related clashes.

## 5.3 Torsion angles [i](#)

### 5.3.1 Protein backbone [i](#)

In the following table, the Percentiles column shows the percent Ramachandran outliers of the chain as a percentile score with respect to all X-ray entries followed by that with respect to entries of similar resolution.

The Analysed column shows the number of residues for which the backbone conformation was analysed, and the total number of residues.

Mol	Chain	Analysed	Favoured	Allowed	Outliers	Percentiles	
1	A	283/259 (109%)	271 (96%)	12 (4%)	0	100	100

There are no Ramachandran outliers to report.

### 5.3.2 Protein sidechains [i](#)

In the following table, the Percentiles column shows the percent sidechain outliers of the chain as a percentile score with respect to all X-ray entries followed by that with respect to entries of similar resolution.

The Analysed column shows the number of residues for which the sidechain conformation was analysed, and the total number of residues.

Mol	Chain	Analysed	Rotameric	Outliers	Percentiles	
1	A	249/224 (111%)	247 (99%)	2 (1%)	81	52

All (2) residues with a non-rotameric sidechain are listed below:

Mol	Chain	Res	Type
1	A	1149[A]	LYS
1	A	1149[B]	LYS

Sometimes sidechains can be flipped to improve hydrogen bonding and reduce clashes. There are no such sidechains identified.

### 5.3.3 RNA [i](#)

There are no RNA molecules in this entry.

## 5.4 Non-standard residues in protein, DNA, RNA chains [i](#)

There are no non-standard protein/DNA/RNA residues in this entry.

## 5.5 Carbohydrates [i](#)

There are no monosaccharides in this entry.

## 5.6 Ligand geometry

Of 14 ligands modelled in this entry, 1 is monoatomic and 1 is modelled with single atom - leaving 12 for Mogul analysis.

In the following table, the Counts columns list the number of bonds (or angles) for which Mogul statistics could be retrieved, the number of bonds (or angles) that are observed in the model and the number of bonds (or angles) that are defined in the Chemical Component Dictionary. The Link column lists molecule types, if any, to which the group is linked. The Z score for a bond length (or angle) is the number of standard deviations the observed value is removed from the expected value. A bond length (or angle) with  $|Z| > 2$  is considered an outlier worth inspection. RMSZ is the root-mean-square of all Z scores of the bond lengths (or angles).

Mol	Type	Chain	Res	Link	Bond lengths			Bond angles		
					Counts	RMSZ	# Z  > 2	Counts	RMSZ	# Z  > 2
5	MBO	A	2009	-	7,10,10	2.18	4 (57%)	11,13,13	1.47	3 (27%)
4	GOL	A	2004[B]	-	5,5,5	0.83	0	5,5,5	1.29	0
4	GOL	A	2007	-	5,5,5	0.63	0	5,5,5	0.66	0
3	D7A	A	2002[A]	-	26,26,26	1.44	6 (23%)	36,36,36	1.32	5 (13%)
3	D7A	A	2002[B]	-	26,26,26	1.35	4 (15%)	36,36,36	1.77	8 (22%)
4	GOL	A	2004[A]	-	5,5,5	0.41	0	5,5,5	1.36	1 (20%)
4	GOL	A	2006	-	5,5,5	0.68	0	5,5,5	1.99	3 (60%)
5	MBO	A	2008[B]	1	7,10,10	18.44	2 (28%)	11,13,13	5.46	6 (54%)
5	MBO	A	2010	-	7,10,10	2.00	2 (28%)	11,13,13	2.70	6 (54%)
4	GOL	A	2005	-	5,5,5	0.51	0	5,5,5	0.74	0
5	MBO	A	2008[A]	1	7,10,10	1.64	2 (28%)	11,13,13	1.40	2 (18%)
4	GOL	A	2003[A]	-	5,5,5	0.54	0	5,5,5	1.23	0

In the following table, the Chirals column lists the number of chiral outliers, the number of chiral centers analysed, the number of these observed in the model and the number defined in the Chemical Component Dictionary. Similar counts are reported in the Torsion and Rings columns. '-' means no outliers of that kind were identified.

Mol	Type	Chain	Res	Link	Chirals	Torsions	Rings
5	MBO	A	2009	-	-	0/4/4/4	0/1/1/1
4	GOL	A	2004[B]	-	-	2/4/4/4	-
4	GOL	A	2007	-	-	0/4/4/4	-
3	D7A	A	2002[A]	-	-	8/20/20/20	0/2/2/2
3	D7A	A	2002[B]	-	-	6/20/20/20	0/2/2/2
4	GOL	A	2004[A]	-	-	2/4/4/4	-
4	GOL	A	2006	-	-	3/4/4/4	-
5	MBO	A	2008[B]	1	-	0/4/4/4	0/1/1/1
5	MBO	A	2010	-	-	0/4/4/4	0/1/1/1

*Continued on next page...*

*Continued from previous page...*

Mol	Type	Chain	Res	Link	Chirals	Torsions	Rings
4	GOL	A	2005	-	-	0/4/4/4	-
5	MBO	A	2008[A]	1	-	0/4/4/4	0/1/1/1
4	GOL	A	2003[A]	-	-	0/4/4/4	-

All (20) bond length outliers are listed below:

Mol	Chain	Res	Type	Atoms	Z	Observed(Å)	Ideal(Å)
5	A	2008[B]	MBO	OZ2-CZ	48.50	2.77	1.30
5	A	2008[B]	MBO	CE4-CZ	-5.09	1.38	1.49
5	A	2010	MBO	CE4-CZ	-3.80	1.41	1.49
3	A	2002[A]	D7A	CAU-CAS	-3.57	1.42	1.50
3	A	2002[B]	D7A	CAU-CAS	-3.57	1.42	1.50
3	A	2002[B]	D7A	CAO-CAT	-3.49	1.41	1.51
3	A	2002[A]	D7A	CAO-CAT	-3.46	1.41	1.51
5	A	2009	MBO	CE4-CZ	-3.45	1.42	1.49
5	A	2009	MBO	CE3-CE2	2.83	1.43	1.38
5	A	2008[A]	MBO	CE6-CE5	2.55	1.43	1.38
5	A	2010	MBO	CE6-CE5	2.51	1.43	1.38
5	A	2009	MBO	CE6-CE5	2.50	1.43	1.38
3	A	2002[A]	D7A	OAQ-CAW	-2.40	1.33	1.37
5	A	2008[A]	MBO	CE4-CZ	-2.37	1.44	1.49
3	A	2002[A]	D7A	OAE-SAY	2.27	1.48	1.43
3	A	2002[B]	D7A	OAE-SAY	2.27	1.48	1.43
5	A	2009	MBO	OZ1-CZ	2.17	1.29	1.22
3	A	2002[A]	D7A	CAJ-CAH	2.12	1.42	1.38
3	A	2002[B]	D7A	CAJ-CAH	2.12	1.42	1.38
3	A	2002[A]	D7A	OAR-CAX	-2.09	1.33	1.37

All (34) bond angle outliers are listed below:

Mol	Chain	Res	Type	Atoms	Z	Observed(°)	Ideal(°)
5	A	2008[B]	MBO	OZ2-CZ-OZ1	-14.18	91.88	123.35
5	A	2008[B]	MBO	OZ2-CZ-CE4	9.42	139.29	114.85
3	A	2002[B]	D7A	CAB-OAR-CAX	-6.38	107.91	117.53
5	A	2010	MBO	CE5-CE4-CE3	5.09	125.83	118.59
5	A	2010	MBO	CE2-CE3-CE4	-3.84	116.31	120.78
3	A	2002[B]	D7A	CAA-OAQ-CAW	-3.75	111.87	117.53
5	A	2008[A]	MBO	OZ2-CZ-CE4	3.18	123.09	114.85
5	A	2008[B]	MBO	CE5-CE4-CZ	-3.16	114.18	120.39
5	A	2010	MBO	CE5-CE6-CE1	-2.92	115.87	121.56
4	A	2006	GOL	O1-C1-C2	2.89	124.07	110.20
3	A	2002[B]	D7A	OAQ-CAW-CAX	2.78	119.28	115.41

*Continued on next page...*



Continued from previous page...

Mol	Chain	Res	Type	Atoms	Z	Observed(°)	Ideal(°)
5	A	2008[B]	MBO	OZ1-CZ-CE4	2.77	128.83	121.45
5	A	2008[B]	MBO	CE5-CE4-CE3	2.64	122.34	118.59
3	A	2002[A]	D7A	CAB-OAR-CAX	-2.62	113.58	117.53
5	A	2008[B]	MBO	CE6-CE5-CE4	-2.60	117.75	120.78
5	A	2010	MBO	OZ2-CZ-CE4	2.59	121.57	114.85
5	A	2010	MBO	CE6-CE5-CE4	-2.56	117.80	120.78
5	A	2008[A]	MBO	OZ2-CZ-OZ1	-2.54	117.70	123.35
4	A	2004[A]	GOL	O2-C2-C1	2.52	120.21	109.12
4	A	2006	GOL	O2-C2-C1	2.50	120.11	109.12
3	A	2002[A]	D7A	CAI-CAK-CAV	2.45	121.98	119.45
3	A	2002[B]	D7A	CAI-CAK-CAV	2.45	121.98	119.45
5	A	2010	MBO	OZ2-CZ-OZ1	-2.28	118.29	123.35
5	A	2009	MBO	CE5-CE4-CE3	2.24	121.78	118.59
3	A	2002[A]	D7A	CAM-CAX-CAW	2.18	122.73	119.84
3	A	2002[B]	D7A	OAR-CAX-CAM	-2.16	120.41	124.12
3	A	2002[B]	D7A	OAQ-CAW-CAL	-2.15	120.69	124.37
3	A	2002[A]	D7A	OAE-SAY-CAV	-2.12	104.98	107.35
3	A	2002[B]	D7A	OAE-SAY-CAV	-2.12	104.98	107.35
4	A	2006	GOL	O2-C2-C3	2.08	118.27	109.12
5	A	2009	MBO	CE3-CE2-CE1	-2.04	117.59	121.56
5	A	2009	MBO	OZ2-CZ-CE4	2.02	120.10	114.85
3	A	2002[A]	D7A	OAE-SAY-NAC	2.00	110.33	107.36
3	A	2002[B]	D7A	OAE-SAY-NAC	2.00	110.33	107.36

There are no chirality outliers.

All (21) torsion outliers are listed below:

Mol	Chain	Res	Type	Atoms
4	A	2004[A]	GOL	O1-C1-C2-C3
4	A	2004[B]	GOL	C1-C2-C3-O3
4	A	2006	GOL	O1-C1-C2-C3
3	A	2002[A]	D7A	CAW-CAX-OAR-CAB
3	A	2002[A]	D7A	CAM-CAX-OAR-CAB
3	A	2002[B]	D7A	CAW-CAX-OAR-CAB
3	A	2002[B]	D7A	CAL-CAW-OAQ-CAA
3	A	2002[B]	D7A	CAM-CAX-OAR-CAB
3	A	2002[B]	D7A	CAX-CAW-OAQ-CAA
4	A	2004[A]	GOL	O1-C1-C2-O2
4	A	2004[B]	GOL	O2-C2-C3-O3
4	A	2006	GOL	O1-C1-C2-O2
4	A	2006	GOL	O2-C2-C3-O3
3	A	2002[A]	D7A	CAX-CAW-OAQ-CAA

Continued on next page...



*Continued from previous page...*

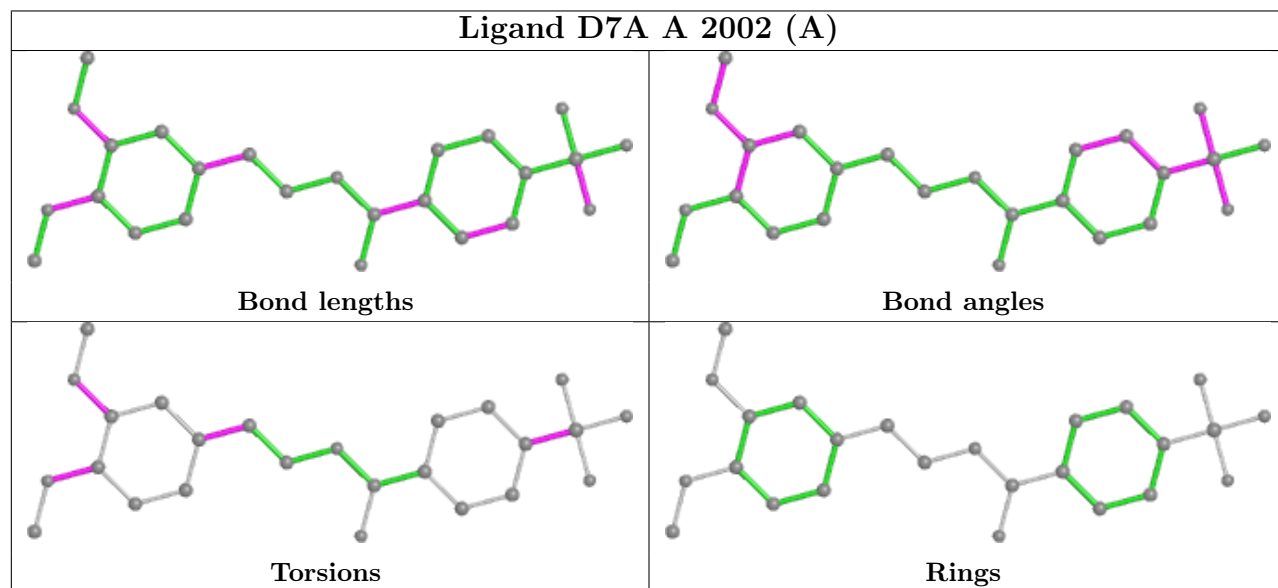
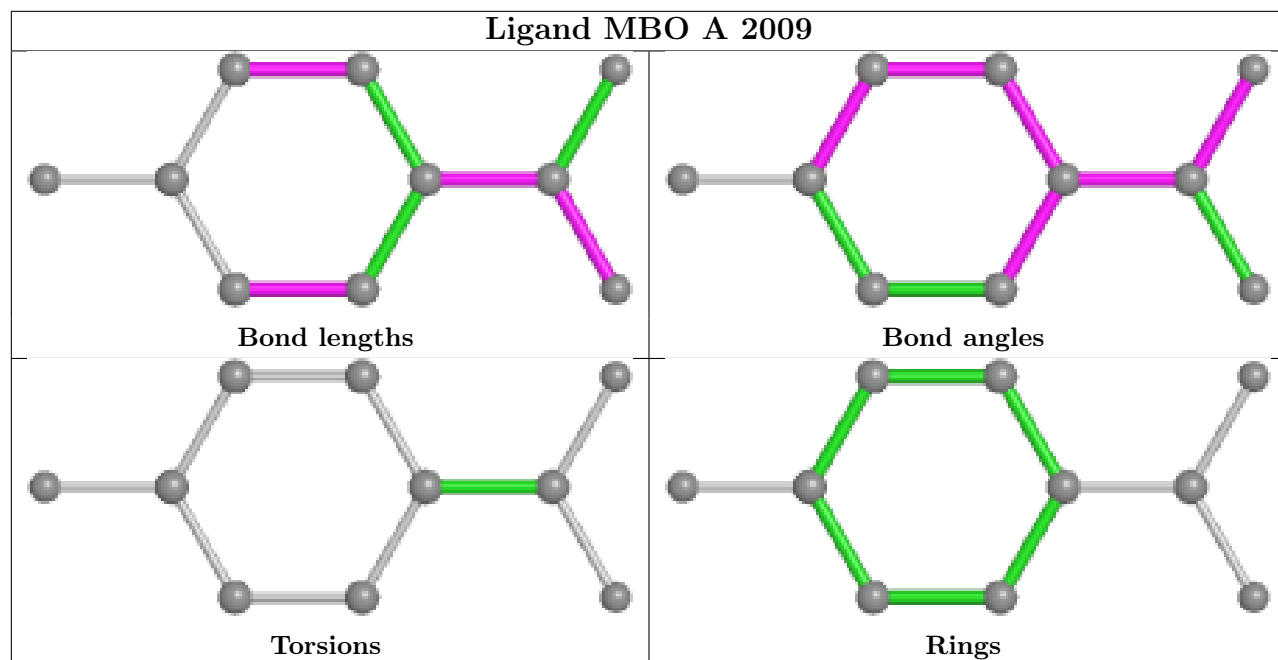
Mol	Chain	Res	Type	Atoms
3	A	2002[A]	D7A	CAN-CAO-CAT-CAM
3	A	2002[A]	D7A	CAL-CAW-OAQ-CAA
3	A	2002[A]	D7A	CAN-CAO-CAT-CAG
3	A	2002[A]	D7A	CAK-CAV-SAY-OAE
3	A	2002[B]	D7A	CAK-CAV-SAY-OAE
3	A	2002[A]	D7A	CAJ-CAV-SAY-OAE
3	A	2002[B]	D7A	CAJ-CAV-SAY-OAE

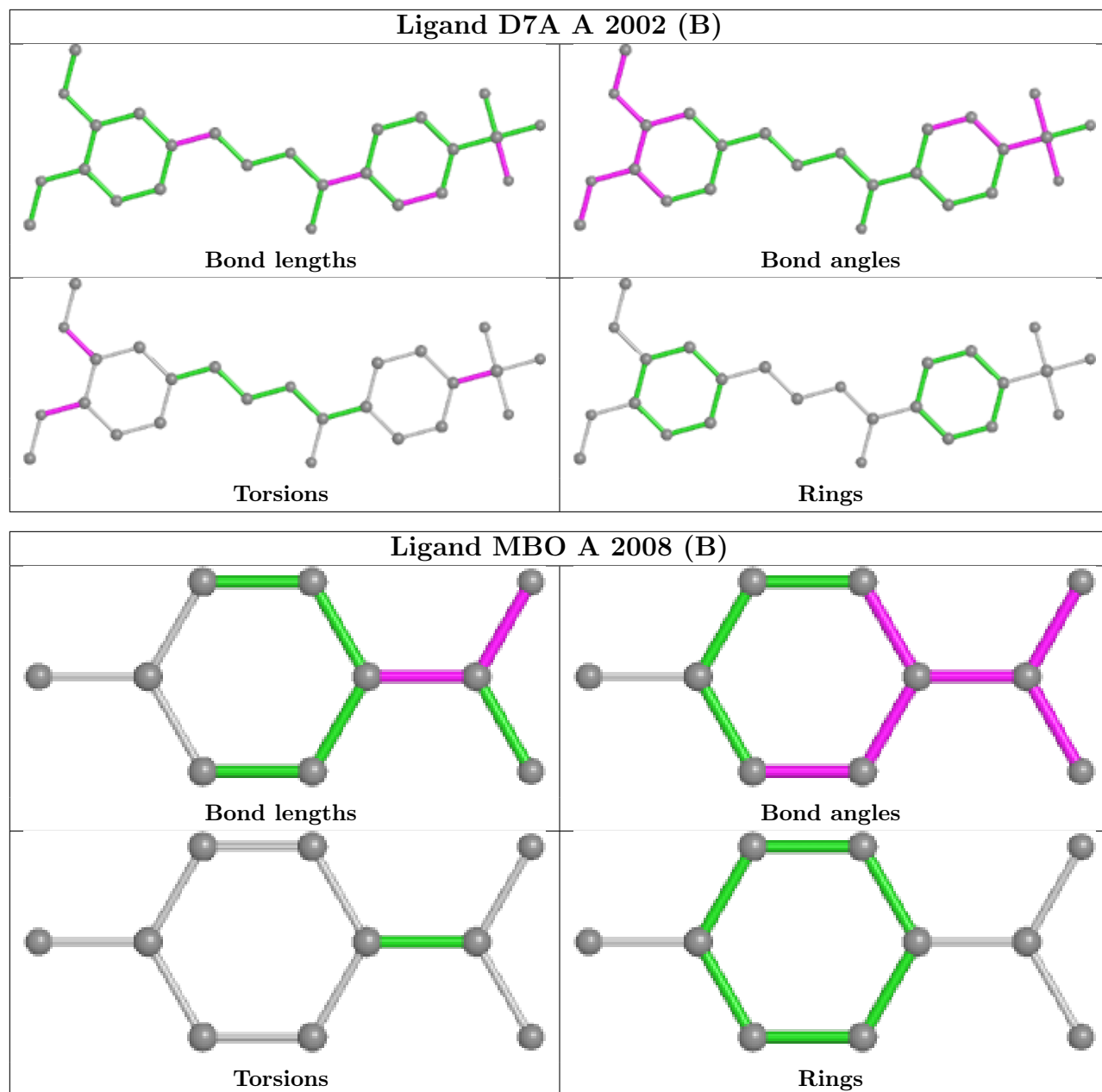
There are no ring outliers.

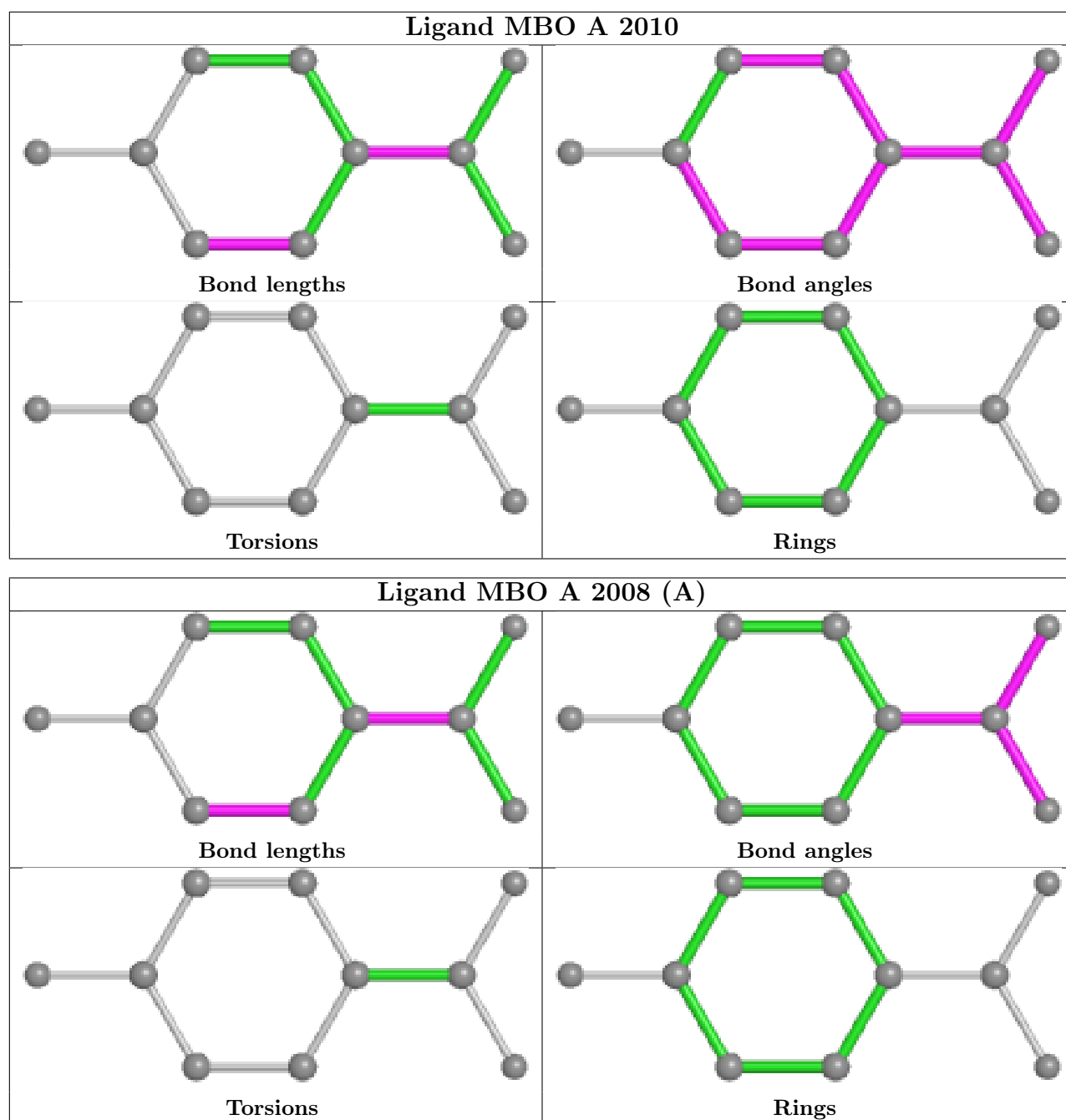
9 monomers are involved in 59 short contacts:

Mol	Chain	Res	Type	Clashes	Symm-Clashes
5	A	2009	MBO	4	0
4	A	2004[B]	GOL	4	0
3	A	2002[B]	D7A	2	0
4	A	2004[A]	GOL	4	0
4	A	2006	GOL	3	0
5	A	2008[B]	MBO	8	0
5	A	2010	MBO	14	0
4	A	2005	GOL	1	0
5	A	2008[A]	MBO	19	0

The following is a two-dimensional graphical depiction of Mogul quality analysis of bond lengths, bond angles, torsion angles, and ring geometry for all instances of the Ligand of Interest. In addition, ligands with molecular weight > 250 and outliers as shown on the validation Tables will also be included. For torsion angles, if less than 5% of the Mogul distribution of torsion angles is within 10 degrees of the torsion angle in question, then that torsion angle is considered an outlier. Any bond that is central to one or more torsion angles identified as an outlier by Mogul will be highlighted in the graph. For rings, the root-mean-square deviation (RMSD) between the ring in question and similar rings identified by Mogul is calculated over all ring torsion angles. If the average RMSD is greater than 60 degrees and the minimal RMSD between the ring in question and any Mogul-identified rings is also greater than 60 degrees, then that ring is considered an outlier. The outliers are highlighted in purple. The color gray indicates Mogul did not find sufficient equivalents in the CSD to analyse the geometry.







## 5.7 Other polymers [i](#)

There are no such residues in this entry.

## 5.8 Polymer linkage issues [i](#)

There are no chain breaks in this entry.

## 6 Fit of model and data [i](#)

### 6.1 Protein, DNA and RNA chains [i](#)

In the following table, the column labelled '#RSRZ > 2' contains the number (and percentage) of RSRZ outliers, followed by percent RSRZ outliers for the chain as percentile scores relative to all X-ray entries and entries of similar resolution. The OWAB column contains the minimum, median, 95<sup>th</sup> percentile and maximum values of the occupancy-weighted average B-factor per residue. The column labelled 'Q < 0.9' lists the number of (and percentage) of residues with an average occupancy less than 0.9.

Mol	Chain	Analysed	<RSRZ>	#RSRZ>2	OWAB(Å <sup>2</sup> )	Q<0.9
1	A	258/259 (99%)	-0.19	4 (1%) 72 64	6, 12, 27, 40	3 (1%)

All (4) RSRZ outliers are listed below:

Mol	Chain	Res	Type	RSRZ
1	A	1004	HIS	3.1
1	A	1261	LYS	3.0
1	A	1253	ASN	2.6
1	A	1075	ASP	2.3

### 6.2 Non-standard residues in protein, DNA, RNA chains [i](#)

There are no non-standard protein/DNA/RNA residues in this entry.

### 6.3 Carbohydrates [i](#)

There are no monosaccharides in this entry.

### 6.4 Ligands [i](#)

In the following table, the Atoms column lists the number of modelled atoms in the group and the number defined in the chemical component dictionary. The B-factors column lists the minimum, median, 95<sup>th</sup> percentile and maximum values of B factors of atoms in the group. The column labelled 'Q < 0.9' lists the number of atoms with occupancy less than 0.9.

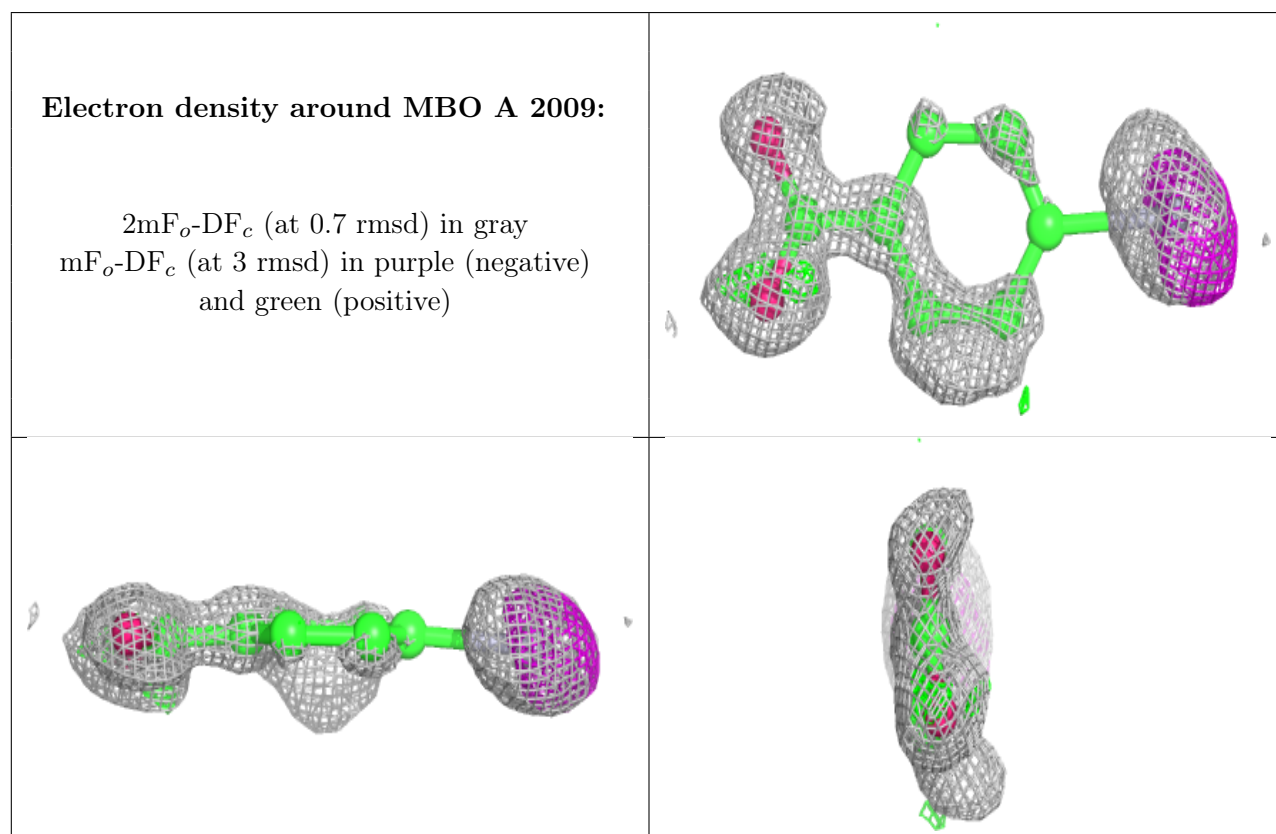
Mol	Type	Chain	Res	Atoms	RSCC	RSR	B-factors(Å <sup>2</sup> )	Q<0.9
4	GOL	A	2003[A]	6/6	0.87	0.14	22,26,26,28	0
4	GOL	A	2007	6/6	0.88	0.18	26,33,46,51	0
4	GOL	A	2006	6/6	0.89	0.27	27,38,40,50	0

*Continued on next page...*

Continued from previous page...

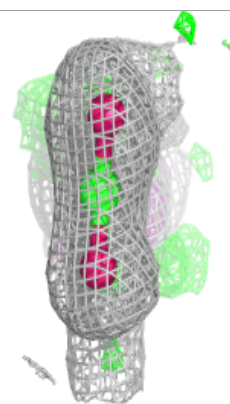
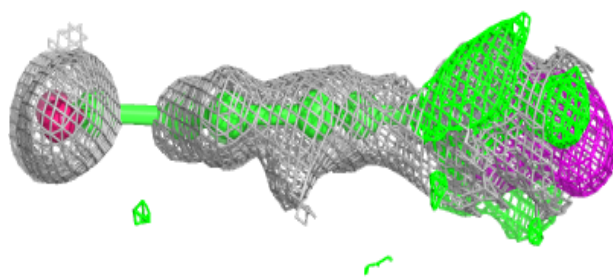
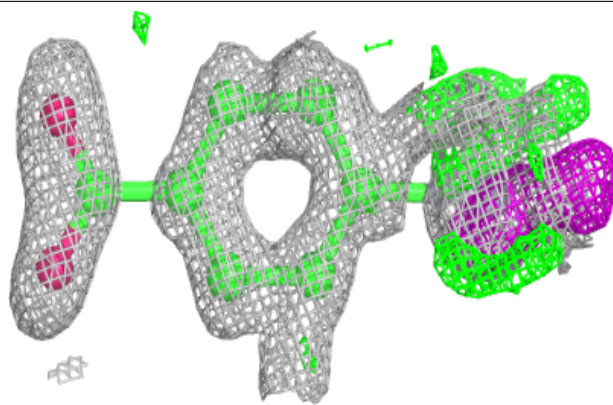
Mol	Type	Chain	Res	Atoms	RSCC	RSR	B-factors( $\text{\AA}^2$ )	Q<0.9
4	GOL	A	2005	6/6	0.89	0.13	19,22,27,29	0
5	MBO	A	2011	1/10	0.94	0.09	15,15,15,15	1
4	GOL	A	2004[A]	6/6	0.96	0.12	8,11,15,23	6
4	GOL	A	2004[B]	6/6	0.96	0.12	8,12,13,15	6
5	MBO	A	2009	10/10	0.98	0.15	10,16,22,22	10
5	MBO	A	2008[A]	10/10	0.99	0.08	10,12,14,17	10
5	MBO	A	2008[B]	10/10	0.99	0.08	8,13,18,26	10
3	D7A	A	2002[A]	25/25	0.99	0.11	5,11,30,47	13
5	MBO	A	2010	10/10	0.99	0.11	13,17,30,33	10
3	D7A	A	2002[B]	25/25	0.99	0.11	5,10,29,37	13
2	ZN	A	2001	1/1	1.00	0.04	6,6,6,6	0

The following is a graphical depiction of the model fit to experimental electron density of all instances of the Ligand of Interest. In addition, ligands with molecular weight > 250 and outliers as shown on the geometry validation Tables will also be included. Each fit is shown from different orientation to approximate a three-dimensional view.

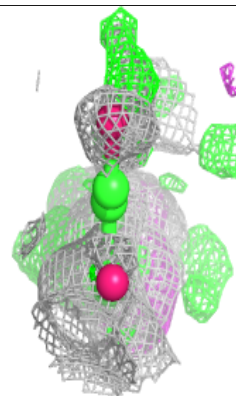
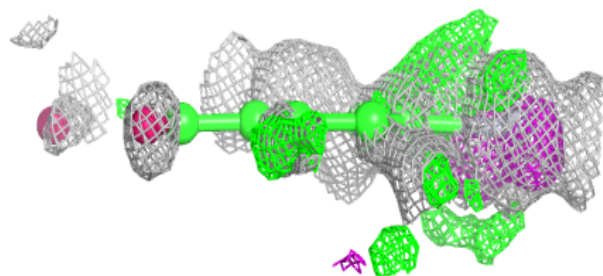
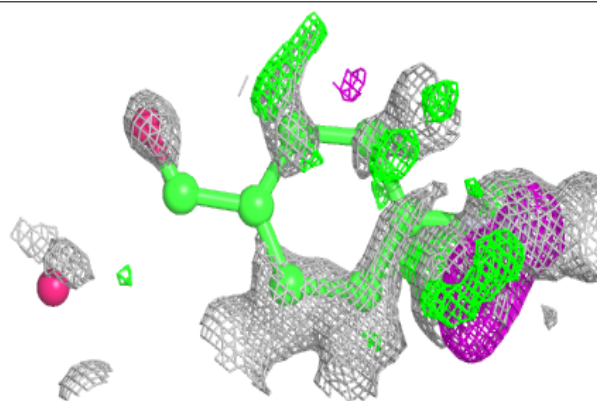


**Electron density around MBO A 2008 (A):**

$2mF_o-DF_c$  (at 0.7 rmsd) in gray  
 $mF_o-DF_c$  (at 3 rmsd) in purple (negative)  
and green (positive)

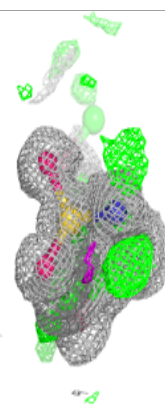
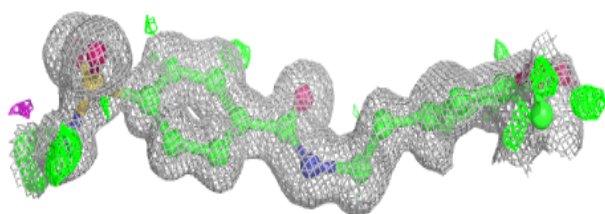
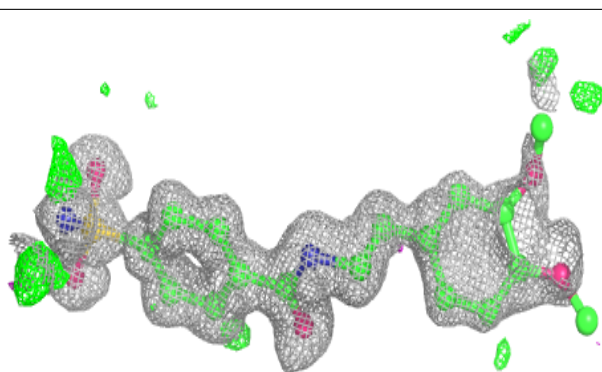
**Electron density around MBO A 2008 (B):**

$2mF_o-DF_c$  (at 0.7 rmsd) in gray  
 $mF_o-DF_c$  (at 3 rmsd) in purple (negative)  
and green (positive)

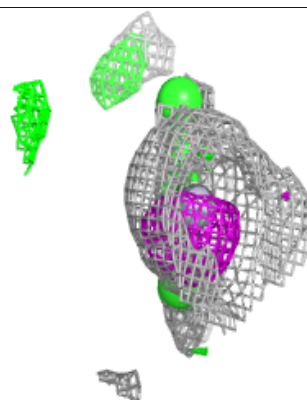
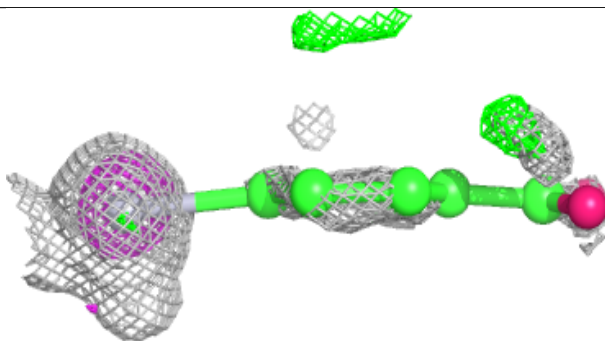
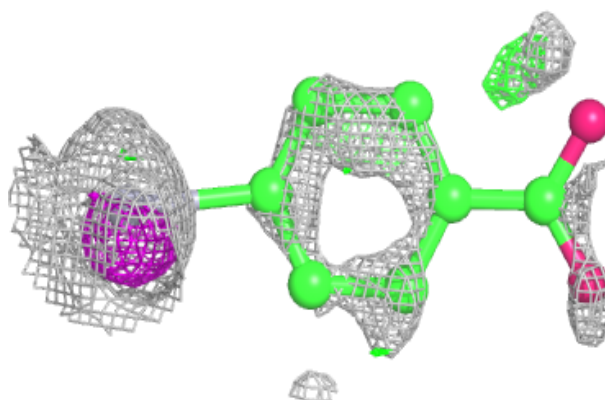


**Electron density around D7A A 2002 (A):**

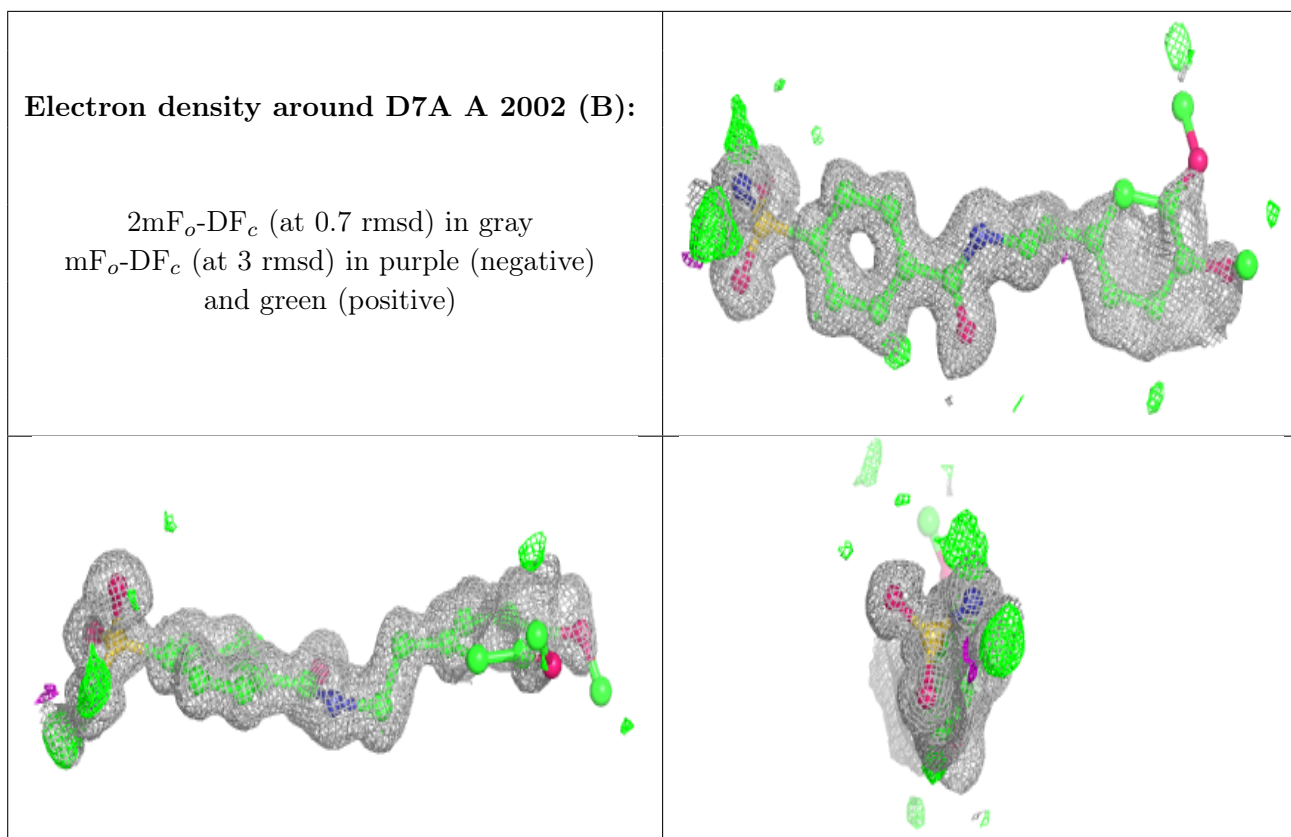
$2mF_o-DF_c$  (at 0.7 rmsd) in gray  
 $mF_o-DF_c$  (at 3 rmsd) in purple (negative)  
and green (positive)

**Electron density around MBO A 2010:**

$2mF_o-DF_c$  (at 0.7 rmsd) in gray  
 $mF_o-DF_c$  (at 3 rmsd) in purple (negative)  
and green (positive)







## 6.5 Other polymers [i](#)

There are no such residues in this entry.