



## Full wwPDB EM Validation Report ⓘ

Jun 1, 2026 – 04:53 PM JST

PDB ID : 9V6X / pdb\_00009v6x  
EMDB ID : EMD-64809  
Title : Cryo-EM structure of the cPRC1 complex bound to an endogenous 184-bp mono-nucleosome  
Authors : Yu, Y.; Cai, D.; Zhang, Y.Z.; Huang, J.  
Deposited on : 2025-05-27  
Resolution : 4.00 Å(reported)

This is a Full wwPDB EM Validation Report for a publicly released PDB entry.

We welcome your comments at [validation@mail.wwpdb.org](mailto:validation@mail.wwpdb.org)

A user guide is available at

<https://www.wwpdb.org/validation/2017/EMValidationReportHelp>  
with specific help available everywhere you see the ⓘ symbol.

The types of validation reports are described at

<http://www.wwpdb.org/validation/2017/FAQs#types>.

---

The following versions of software and data (see [references ⓘ](#)) were used in the production of this report:

EMDB validation analysis : 0.0.1.dev132  
MolProbity : 4-5-2 with Phenix2.0  
Percentile statistics : 20250101.v01 (using entries in the PDB archive January 1st 2025)  
EM percentile statistics : 202505.v01 (Using data in the EMDb archive up until May 2025)  
MapQ : 1.9.13  
Ideal geometry (proteins) : Engh & Huber (2001)  
Ideal geometry (DNA, RNA) : Parkinson et al. (1996)  
Validation Pipeline (wwPDB-VP) : 2.49



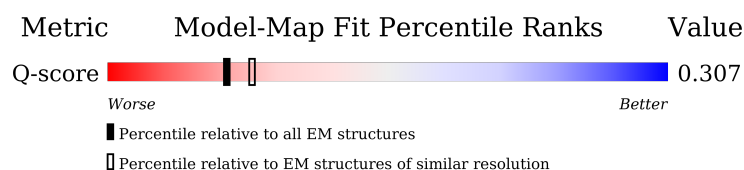
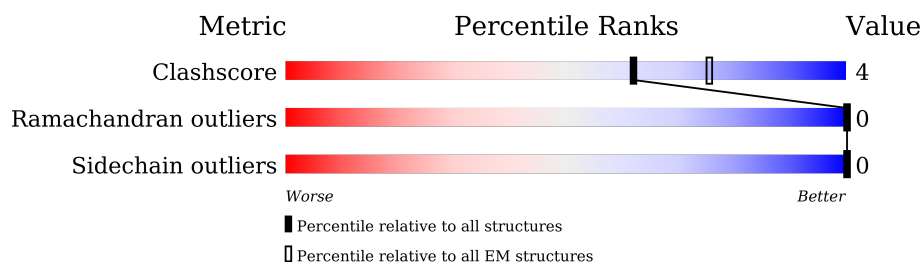
# 1 Overall quality at a glance

The following experimental techniques were used to determine the structure:

*ELECTRON MICROSCOPY*

The reported resolution of this entry is 4.00 Å.

Percentile scores (ranging between 0-100) for global validation metrics of the entry are shown in the following graphic. The table shows the number of entries on which the scores are based.



Metric	Whole archive (#Entries)	EM structures (#Entries)	Similar EM resolution (#Entries, resolution range(Å))
Clashscore	229148	23984	-
Ramachandran outliers	224038	23583	-
Sidechain outliers	223484	23102	-
Q-score	-	25397	7587 ( 3.50 - 4.50 )









The table below summarises the geometric issues observed across the polymeric chains and their fit to the map. The red, orange, yellow and green segments of the bar indicate the fraction of residues that contain outliers for  $\geq 3$ , 2, 1 and 0 types of geometric quality criteria respectively. A grey segment represents the fraction of residues that are not modelled. The numeric value for each fraction is indicated below the corresponding segment, with a dot representing fractions  $\leq 5\%$ . The upper red bar (where present) indicates the fraction of residues that have poor fit to the EM map (all-atom inclusion  $< 40\%$ ). The numeric value is given above the bar.

Mol	Chain	Length	Quality of chain
1	A	136	
1	E	136	
2	C	128	
2	G	128	

*Continued on next page...*



*Continued from previous page...*

Mol	Chain	Length	Quality of chain
3	D	126	
3	H	126	
4	B	103	
4	F	103	
5	I	184	
6	J	184	
7	M	326	
8	N	336	



## 2 Entry composition

There are 9 unique types of molecules in this entry. The entry contains 27562 atoms, of which 12243 are hydrogens and 0 are deuteriums.

In the tables below, the AltConf column contains the number of residues with at least one atom in alternate conformation and the Trace column contains the number of residues modelled with at most 2 atoms.

- Molecule 1 is a protein called Histone H3.1.

Mol	Chain	Residues	Atoms						AltConf	Trace
1	A	97	Total	C	H	N	O	S	0	0
			1635	503	836	155	137	4		
1	E	95	Total	C	H	N	O	S	0	0
			1608	494	824	151	135	4		

- Molecule 2 is a protein called Histone H2A type 1-H.

Mol	Chain	Residues	Atoms						AltConf	Trace
2	G	109	Total	C	H	N	O		0	0
			1735	529	897	161	148			
2	C	109	Total	C	H	N	O		0	0
			1735	529	897	161	148			

- Molecule 3 is a protein called Histone H2B type 1-C/E/F/G/I.

Mol	Chain	Residues	Atoms						AltConf	Trace
3	D	93	Total	C	H	N	O	S	0	0
			1466	455	742	130	137	2		
3	H	93	Total	C	H	N	O	S	0	0
			1466	455	742	130	137	2		

- Molecule 4 is a protein called Histone H4.

Mol	Chain	Residues	Atoms						AltConf	Trace
4	B	82	Total	C	H	N	O	S	0	0
			1348	412	696	127	112	1		
4	F	82	Total	C	H	N	O	S	0	0
			1348	412	696	127	112	1		

- Molecule 5 is a DNA chain called DNA (184-MER).



Mol	Chain	Residues	Atoms						AltConf	Trace
5	I	184	Total	C	H	N	O	P	0	0
			5820	1784	2067	682	1103	184		

- Molecule 6 is a DNA chain called DNA (184-MER).

Mol	Chain	Residues	Atoms						AltConf	Trace
6	J	184	Total	C	H	N	O	P	0	0
			5859	1797	2068	705	1105	184		

- Molecule 7 is a protein called Polycomb complex protein BMI-1.

Mol	Chain	Residues	Atoms						AltConf	Trace
7	M	121	Total	C	H	N	O	S	0	0
			1935	607	968	172	179	9		

- Molecule 8 is a protein called E3 ubiquitin-protein ligase RING2.

Mol	Chain	Residues	Atoms						AltConf	Trace
8	N	100	Total	C	H	N	O	S	0	0
			1603	498	810	138	147	10		

- Molecule 9 is ZINC ION (CCD ID: ZN) (formula: Zn) (labeled as "Ligand of Interest" by depositor).

Mol	Chain	Residues	Atoms		AltConf
9	M	2	Total	Zn	0
			2	2	
9	N	2	Total	Zn	0
			2	2	

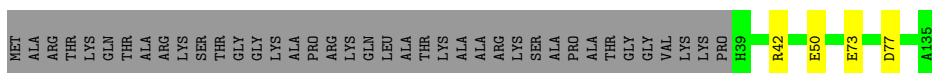


### 3 Residue-property plots

These plots are drawn for all protein, RNA, DNA and oligosaccharide chains in the entry. The first graphic for a chain summarises the proportions of the various outlier classes displayed in the second graphic. The second graphic shows the sequence view annotated by issues in geometry and atom inclusion in map density. Residues are color-coded according to the number of geometric quality criteria for which they contain at least one outlier: green = 0, yellow = 1, orange = 2 and red = 3 or more. A red diamond above a residue indicates a poor fit to the EM map for this residue (all-atom inclusion < 40%). Stretches of 2 or more consecutive residues without any outlier are shown as a green connector. Residues present in the sample, but not in the model, are shown in grey.

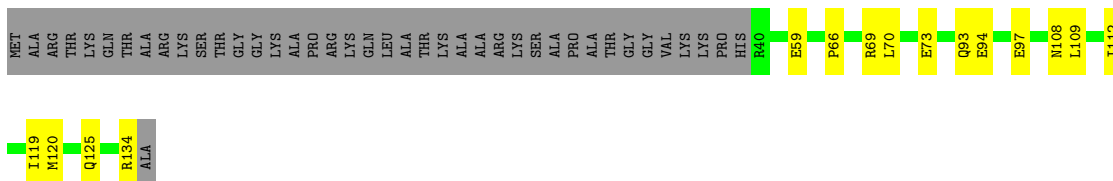
- Molecule 1: Histone H3.1

Chain A: 



- Molecule 1: Histone H3.1

Chain E: 



- Molecule 2: Histone H2A type 1-H

Chain G: 



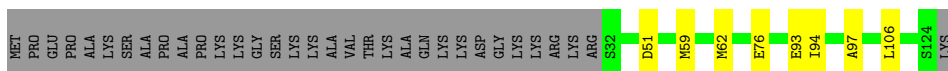
- Molecule 2: Histone H2A type 1-H

Chain C: 



- Molecule 3: Histone H2B type 1-C/E/F/G/I

Chain D: 









HIS  
GLN  
SER  
SER  
PHE  
ALA  
ASN  
ARG  
PRO  
GLY  
LYS  
SER  
SER  
VAL  
ASN  
GLY  
SER  
SER  
ALA  
THR  
SER  
SER  
GLY

● Molecule 8: E3 ubiquitin-protein ligase RING2



MET  
SER  
GLN  
ALA  
VAL  
GLN  
THR  
ASN  
GLY  
THR  
GLN  
PRO  
VAL  
LEU  
SER  
LYS  
T16  
L24  
Q25  
R26  
T27  
E30  
A31  
I32  
T33  
D34  
G35  
L36  
E37  
I38  
V39  
H46  
S47  
K59  
N60  
T64  
D74  
C75  
T78  
R81  
S82  
R98  
S99  
L100  
D103  
P104  
N105  
L109  
P115

SER  
ARG  
ASP  
GLU  
TYR  
GLU  
ALA  
HIS  
GLN  
THR  
HIS  
ARG  
GLN  
VAL  
ASN  
LEU  
ALA  
ARG  
ILE  
ASN  
LYS  
HIS  
ASN  
ASN  
GLN  
GLN  
ALA  
THR  
LEU  
SER  
SER  
HIS  
ASP  
SER  
GLY  
ILE  
GLU  
LEU  
GLU  
GLY  
LEU  
ASP  
LEU  
LYS  
ILE  
GLN  
ALA  
MET  
ASN  
ARG  
LEU  
GLN  
ARG  
GLY  
LYS  
LYS  
GLN  
ILE  
GLU  
ASN  
GLY  
SER  
GLY  
ILE  
ASN  
GLY  
SER  
VAL  
PHE  
ALA  
GLY  
ASP  
ASN  
GLY  
ASP  
THR

SER  
SER  
HIS  
CYS  
SER  
ASN  
ALA  
SER  
THR  
HIS  
HIS  
SER  
ASN  
GLN  
GLU  
ALA  
PRO  
SER  
ASN  
LYS  
ARG  
THR  
HIS  
THR  
LEU  
SER  
SER  
ASP  
SER  
SER  
SER  
LEU  
LEU  
LEU  
ASP  
ASN  
ASN  
ASN  
ALA  
ALA  
MET  
SER  
MET  
ALA  
ALA  
ILE  
ASP  
PRO  
VAL  
MET  
GLY  
ASP  
GLY  
ALA  
SER  
SER  
GLY  
ILE  
GLU  
GLY  
LEU  
VAL  
PHE  
ARG  
PRO  
HIS  
PRO  
TYR  
THR  
ILE

LEU  
MET  
GLU  
LYS  
ASP  
SER  
SER  
ALA  
THR  
GLN  
THR  
HIS  
ARG  
ASN  
GLY  
TYR  
ILE  
LYS  
THR  
SER  
GLY  
GLY  
ALA  
ASN  
THR  
VAL  
ASP  
HIS  
TRP  
LEU  
SER  
SER  
LYS  
TYR  
ASN  
LYS  
LEU  
LEU  
VAL  
PRO  
MET  
GLY  
LEU  
LEU  
ALA  
GLU  
GLU  
LEU  
LEU  
ARG  
LEU  
ALA  
LEU  
GLU  
THR  
LEU  
ARG  
SER  
LYS  
GLY  
GLY  
ASN  
GLN  
MET  
ASN  
LEU  
ASP  
THR  
ALA  
SER  
GLU  
LYS  
GLN  
TYR  
THR  
ILE  
ILE

ALA  
THR  
ALA  
SER  
GLY  
GLN  
PHE  
THR  
VAL  
LEU  
ASN  
GLY  
SER  
PHE  
SER  
LEU  
GLU  
LEU  
VAL  
SER  
GLU  
LYS  
TYR  
TRP  
LYS  
VAL  
ASN  
LYS  
LEU  
PRO  
MET  
GLY  
LEU  
TYR  
ALA  
THR  
LYS  
GLU  
HIS  
LYS



## 4 Experimental information

Property	Value	Source
EM reconstruction method	SINGLE PARTICLE	Depositor
Imposed symmetry	POINT, Not provided	
Number of particles used	19170	Depositor
Resolution determination method	FSC 0.143 CUT-OFF	Depositor
CTF correction method	PHASE FLIPPING AND AMPLITUDE CORRECTION	Depositor
Microscope	TFS KRIOS	Depositor
Voltage (kV)	300	Depositor
Electron dose ( $e^-/\text{\AA}^2$ )	50	Depositor
Minimum defocus (nm)	800	Depositor
Maximum defocus (nm)	3000	Depositor
Magnification	Not provided	
Image detector	GATAN K3 (6k x 4k)	Depositor
Maximum map value	0.024	Depositor
Minimum map value	-0.006	Depositor
Average map value	-0.000	Depositor
Map value standard deviation	0.001	Depositor
Recommended contour level	0.0028	Depositor
Map size (Å)	264.0, 264.0, 264.0	wwPDB
Map dimensions	240, 240, 240	wwPDB
Map angles (°)	90.0, 90.0, 90.0	wwPDB
Pixel spacing (Å)	1.1, 1.1, 1.1	Depositor



## 5 Model quality [i](#)

### 5.1 Standard geometry [i](#)

Bond lengths and bond angles in the following residue types are not validated in this section: ZN

The Z score for a bond length (or angle) is the number of standard deviations the observed value is removed from the expected value. A bond length (or angle) with  $|Z| > 5$  is considered an outlier worth inspection. RMSZ is the root-mean-square of all Z scores of the bond lengths (or angles).

Mol	Chain	Bond lengths		Bond angles	
		RMSZ	$\# Z  > 5$	RMSZ	$\# Z  > 5$
1	A	0.07	0/810	0.23	0/1086
1	E	0.10	0/794	0.29	0/1064
2	C	0.10	0/848	0.26	0/1144
2	G	0.10	0/848	0.24	0/1144
3	D	0.08	0/735	0.22	0/989
3	H	0.09	0/735	0.23	0/989
4	B	0.08	0/659	0.23	0/883
4	F	0.10	0/659	0.28	0/883
5	I	0.17	0/4206	0.40	0/6484
6	J	0.17	0/4256	0.39	0/6572
7	M	0.11	0/984	0.31	0/1328
8	N	0.10	0/807	0.29	0/1091
All	All	0.14	0/16341	0.34	0/23657

There are no bond length outliers.

There are no bond angle outliers.

There are no chirality outliers.

There are no planarity outliers.

### 5.2 Too-close contacts [i](#)

In the following table, the Non-H and H(model) columns list the number of non-hydrogen atoms and hydrogen atoms in the chain respectively. The H(added) column lists the number of hydrogen atoms added and optimized by MolProbity. The Clashes column lists the number of clashes within the asymmetric unit, whereas Symm-Clashes lists symmetry-related clashes.

Mol	Chain	Non-H	H(model)	H(added)	Clashes	Symm-Clashes
1	A	799	836	836	4	0

*Continued on next page...*



*Continued from previous page...*

Mol	Chain	Non-H	H(model)	H(added)	Clashes	Symm-Clashes
1	E	784	824	824	9	0
2	C	838	897	897	14	0
2	G	838	897	897	9	0
3	D	724	742	740	8	0
3	H	724	742	740	5	0
4	B	652	696	696	7	0
4	F	652	696	696	6	0
5	I	3753	2067	2067	18	0
6	J	3791	2068	2068	20	0
7	M	967	968	968	23	0
8	N	793	810	810	12	0
9	M	2	0	0	0	0
9	N	2	0	0	0	0
All	All	15319	12243	12239	116	0

The all-atom clashscore is defined as the number of clashes found per 1000 atoms (including hydrogen atoms). The all-atom clashscore for this structure is 4.

All (116) close contacts within the same asymmetric unit are listed below, sorted by their clash magnitude.

Atom-1	Atom-2	Interatomic distance (Å)	Clash overlap (Å)
2:C:72:ASP:OD2	8:N:81:ARG:NE	2.13	0.81
2:C:16:THR:OG1	6:J:-43:DA:OP1	2.02	0.77
1:E:108:ASN:OD1	2:C:112:GLN:NE2	2.23	0.71
8:N:26:ARG:NH1	8:N:27:THR:O	2.24	0.71
3:H:90:THR:N	3:H:93:GLU:OE2	2.24	0.70
1:A:50:GLU:OE2	4:B:39:ARG:NE	2.25	0.68
8:N:59:LYS:NZ	8:N:60:ASN:OD1	2.26	0.68
1:E:66:PRO:O	1:E:70:LEU:HD23	1.95	0.67
1:E:125:GLN:O	1:E:134:ARG:NH2	2.28	0.67
4:F:23:ARG:NH2	4:F:24:ASP:O	2.31	0.64
8:N:74:ASP:OD1	8:N:75:CYS:N	2.30	0.64
1:A:42:ARG:NH2	6:J:-5:DG:OP1	2.30	0.64
2:C:99:LYS:NZ	4:F:94:GLY:O	2.29	0.63
2:G:24:GLN:N	2:G:56:GLU:OE2	2.31	0.63
7:M:109:GLY:O	7:M:114:ARG:NH2	2.33	0.62
3:D:62:MET:HA	3:D:62:MET:HE3	1.81	0.62
2:G:57:TYR:O	2:G:61:GLU:OE1	2.17	0.62
4:F:59:LYS:O	4:F:63:GLU:OE1	2.18	0.62
2:C:57:TYR:O	2:C:61:GLU:OE1	2.18	0.61
1:E:69:ARG:O	1:E:73:GLU:OE1	2.19	0.60

*Continued on next page...*



*Continued from previous page...*

Atom-1	Atom-2	Interatomic distance (Å)	Clash overlap (Å)
4:F:39:ARG:NH1	4:F:44:LYS:O	2.35	0.59
4:B:54:THR:O	4:B:58:LEU:HD23	2.03	0.59
2:G:18:SER:OG	2:G:23:LEU:O	2.22	0.58
7:M:31:ILE:HD11	7:M:60:VAL:HG13	1.85	0.57
2:G:64:GLU:OE2	2:G:68:ASN:ND2	2.38	0.56
1:E:94:GLU:OE2	2:C:104:GLN:N	2.34	0.56
2:G:44:GLY:N	3:H:89:ILE:O	2.39	0.55
7:M:94:ARG:NE	7:M:113:ASP:O	2.40	0.55
1:E:59:GLU:OE1	1:E:59:GLU:N	2.35	0.54
2:C:118:LYS:NZ	2:C:119:LYS:O	2.37	0.53
7:M:18:CYS:O	7:M:22:GLY:N	2.37	0.53
6:J:32:DG:H2'	6:J:33:DT:H72	1.90	0.53
3:D:76:GLU:OE2	3:D:97:ALA:HB1	2.10	0.52
2:C:90:ASP:O	2:C:94:ASN:ND2	2.43	0.52
6:J:44:DT:H73	6:J:45:DT:O4	2.11	0.51
8:N:64:THR:HA	8:N:100:LEU:HD22	1.92	0.51
5:I:-60:DG:H2'	5:I:-59:DT:H71	1.92	0.51
7:M:31:ILE:HD11	7:M:60:VAL:CG1	2.40	0.51
7:M:31:ILE:HD12	7:M:68:ASN:O	2.10	0.51
7:M:43:ILE:O	7:M:47:LEU:HD23	2.11	0.50
3:D:106:LEU:HD23	8:N:98:ARG:CZ	2.41	0.50
8:N:78:THR:O	8:N:82:SER:OG	2.29	0.50
7:M:32:ILE:HG13	7:M:32:ILE:O	2.11	0.50
7:M:45:ARG:NH2	8:N:24:LEU:O	2.44	0.50
7:M:6:ARG:NH1	8:N:37:GLU:OE2	2.45	0.50
3:D:94:ILE:HD12	2:C:50:TYR:HB3	1.95	0.49
2:C:91:GLU:OE1	2:C:91:GLU:N	2.42	0.49
7:M:88:LYS:O	7:M:92:LYS:HD3	2.12	0.49
5:I:67:DA:H2'	5:I:68:DT:H72	1.95	0.49
7:M:27:ASP:OD2	7:M:27:ASP:O	2.31	0.48
2:C:94:ASN:O	2:C:98:GLY:N	2.45	0.48
7:M:61:HIS:ND1	7:M:64:ARG:O	2.46	0.48
2:G:17:ARG:NH2	5:I:-43:DT:OP2	2.47	0.48
7:M:40:LYS:O	7:M:44:VAL:HG12	2.14	0.48
7:M:66:LEU:HD12	7:M:69:ILE:HD11	1.96	0.48
5:I:-43:DT:H2'	5:I:-42:DT:H71	1.95	0.47
1:E:93:GLN:O	1:E:97:GLU:HG3	2.14	0.47
6:J:-43:DA:C2	6:J:-42:DG:C5	3.03	0.47
2:G:90:ASP:O	2:G:94:ASN:ND2	2.45	0.47
8:N:103:ASP:OD1	8:N:103:ASP:N	2.48	0.46
8:N:105:ASN:O	8:N:109:LEU:HD23	2.15	0.46

*Continued on next page...*



*Continued from previous page...*

Atom-1	Atom-2	Interatomic distance (Å)	Clash overlap (Å)
5:I:-20:DC:O2	6:J:21:DG:N2	2.49	0.46
3:D:59:MET:HA	3:D:59:MET:HE2	1.98	0.45
4:B:39:ARG:NH1	4:B:44:LYS:O	2.44	0.45
1:A:77:ASP:OD1	7:M:64:ARG:NH2	2.50	0.45
4:B:86:VAL:O	4:B:90:LEU:HD13	2.16	0.45
5:I:75:DC:H2'	5:I:76:DT:H72	1.98	0.45
6:J:86:DT:H2'	6:J:87:DT:H71	1.98	0.45
3:D:51:ASP:OD1	3:D:51:ASP:N	2.47	0.45
3:D:106:LEU:HD11	2:C:92:GLU:HB3	1.99	0.45
4:F:68:ASP:OD2	4:F:93:GLN:NE2	2.49	0.44
5:I:-6:DT:H2''	5:I:-5:DA:N7	2.32	0.44
6:J:-42:DG:C2	6:J:-41:DA:C5	3.05	0.44
1:A:73:GLU:OE2	4:B:25:ASN:ND2	2.51	0.44
6:J:-2:DC:C2	6:J:-1:DA:N7	2.86	0.44
7:M:87:PHE:CE2	7:M:88:LYS:HE3	2.52	0.44
1:E:119:ILE:C	1:E:120:MET:HE2	2.43	0.43
5:I:82:DA:H2'	5:I:83:DT:H71	2.00	0.43
7:M:113:ASP:OD1	7:M:114:ARG:N	2.51	0.43
5:I:-57:DC:H2''	5:I:-56:DC:C5	2.53	0.43
6:J:-25:DC:H2'	6:J:-24:DT:H72	1.99	0.43
6:J:19:DC:N4	6:J:20:DG:O6	2.51	0.43
1:E:109:LEU:HA	1:E:112:ILE:HG22	1.99	0.43
7:M:29:THR:N	7:M:38:PHE:O	2.44	0.43
5:I:-45:DA:C2	6:J:46:DG:N2	2.87	0.42
5:I:37:DC:H2''	5:I:38:DT:C4	2.54	0.42
8:N:46:HIS:O	8:N:47:SER:HB3	2.19	0.42
3:H:101:LEU:HD13	4:F:92:ARG:HH21	1.85	0.42
7:M:110:SER:N	7:M:113:ASP:OD2	2.53	0.42
2:C:112:GLN:N	2:C:112:GLN:OE1	2.53	0.42
5:I:-27:DC:H4'	5:I:-26:DT:OP1	2.19	0.42
7:M:88:LYS:O	7:M:91:MET:SD	2.77	0.42
4:B:58:LEU:O	4:B:62:LEU:HD23	2.19	0.42
3:H:97:ALA:O	3:H:101:LEU:HD23	2.19	0.41
6:J:-88:DG:H2'	6:J:-87:DT:H71	2.02	0.41
3:D:93:GLU:OE1	3:D:93:GLU:N	2.54	0.41
3:H:51:ASP:OD1	3:H:51:ASP:N	2.49	0.41
4:B:63:GLU:OE2	4:B:67:ARG:NH1	2.53	0.41
5:I:-16:DT:H2''	5:I:-15:DA:N7	2.35	0.41
5:I:4:DC:H2''	5:I:5:DC:C5	2.55	0.41
5:I:-20:DC:H2'	5:I:-19:DG:C8	2.56	0.41
6:J:30:DC:C5	6:J:31:DT:H73	2.56	0.41

*Continued on next page...*



Continued from previous page...

Atom-1	Atom-2	Interatomic distance (Å)	Clash overlap (Å)
6:J:85:DA:H2'	6:J:86:DT:H71	2.03	0.41
2:G:25:PHE:N	2:G:56:GLU:OE2	2.47	0.41
6:J:68:DC:H2'	6:J:69:DT:H71	2.03	0.41
5:I:43:DT:C2'	5:I:42:DT:H71	2.51	0.41
6:J:44:DG:C2	6:J:43:DA:C5	3.09	0.41
5:I:47:DG:O3'	5:I:48:DG:C8	2.74	0.40
2:C:61:GLU:O	2:C:64:GLU:HG3	2.21	0.40
6:J:36:DG:H2''	6:J:35:DG:C8	2.56	0.40
2:G:118:LYS:HD2	2:G:119:LYS:N	2.36	0.40
6:J:20:DC:N4	6:J:19:DG:O6	2.55	0.40
5:I:6:DC:H1'	5:I:7:DC:C4	2.55	0.40
6:J:25:DC:C2'	6:J:24:DT:H72	2.51	0.40
7:M:27:ASP:OD2	7:M:27:ASP:C	2.64	0.40
7:M:31:ILE:O	7:M:31:ILE:HG23	2.21	0.40

There are no symmetry-related clashes.

## 5.3 Torsion angles [i](#)

### 5.3.1 Protein backbone [i](#)

In the following table, the Percentiles column shows the percent Ramachandran outliers of the chain as a percentile score with respect to all PDB entries followed by that with respect to all EM entries.

The Analysed column shows the number of residues for which the backbone conformation was analysed, and the total number of residues.

Mol	Chain	Analysed	Favoured	Allowed	Outliers	Percentiles	
1	A	95/136 (70%)	93 (98%)	2 (2%)	0	100	100
1	E	93/136 (68%)	92 (99%)	1 (1%)	0	100	100
2	C	107/128 (84%)	106 (99%)	1 (1%)	0	100	100
2	G	107/128 (84%)	105 (98%)	2 (2%)	0	100	100
3	D	91/126 (72%)	91 (100%)	0	0	100	100
3	H	91/126 (72%)	90 (99%)	1 (1%)	0	100	100
4	B	80/103 (78%)	77 (96%)	3 (4%)	0	100	100
4	F	80/103 (78%)	78 (98%)	2 (2%)	0	100	100
7	M	119/326 (36%)	109 (92%)	10 (8%)	0	100	100

Continued on next page...



*Continued from previous page...*

Mol	Chain	Analysed	Favoured	Allowed	Outliers	Percentiles	
8	N	98/336 (29%)	96 (98%)	2 (2%)	0	100	100
All	All	961/1648 (58%)	937 (98%)	24 (2%)	0	100	100

There are no Ramachandran outliers to report.

### 5.3.2 Protein sidechains ⓘ

In the following table, the Percentiles column shows the percent sidechain outliers of the chain as a percentile score with respect to all PDB entries followed by that with respect to all EM entries.

The Analysed column shows the number of residues for which the sidechain conformation was analysed, and the total number of residues.

Mol	Chain	Analysed	Rotameric	Outliers	Percentiles	
1	A	84/111 (76%)	84 (100%)	0	100	100
1	E	83/111 (75%)	83 (100%)	0	100	100
2	C	86/98 (88%)	86 (100%)	0	100	100
2	G	86/98 (88%)	86 (100%)	0	100	100
3	D	79/106 (74%)	79 (100%)	0	100	100
3	H	79/106 (74%)	79 (100%)	0	100	100
4	B	67/79 (85%)	67 (100%)	0	100	100
4	F	67/79 (85%)	67 (100%)	0	100	100
7	M	109/296 (37%)	109 (100%)	0	100	100
8	N	94/297 (32%)	94 (100%)	0	100	100
All	All	834/1381 (60%)	834 (100%)	0	100	100

There are no protein residues with a non-rotameric sidechain to report.

Sometimes sidechains can be flipped to improve hydrogen bonding and reduce clashes. All (5) such sidechains are listed below:

Mol	Chain	Res	Type
3	H	95	GLN
4	F	25	ASN
4	F	93	GLN
7	M	15	HIS
8	N	46	HIS



### 5.3.3 RNA [i](#)

There are no RNA molecules in this entry.

### 5.4 Non-standard residues in protein, DNA, RNA chains [i](#)

There are no non-standard protein/DNA/RNA residues in this entry.

### 5.5 Carbohydrates [i](#)

There are no oligosaccharides in this entry.

### 5.6 Ligand geometry [i](#)

Of 4 ligands modelled in this entry, 4 are monoatomic - leaving 0 for Mogul analysis.

There are no bond length outliers.

There are no bond angle outliers.

There are no chirality outliers.

There are no torsion outliers.

There are no ring outliers.

No monomer is involved in short contacts.

### 5.7 Other polymers [i](#)

There are no such residues in this entry.

### 5.8 Polymer linkage issues [i](#)

There are no chain breaks in this entry.



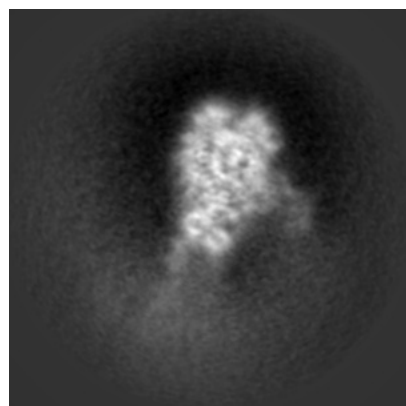
## 6 Map visualisation [i](#)

This section contains visualisations of the EMDB entry EMD-64809. These allow visual inspection of the internal detail of the map and identification of artifacts.

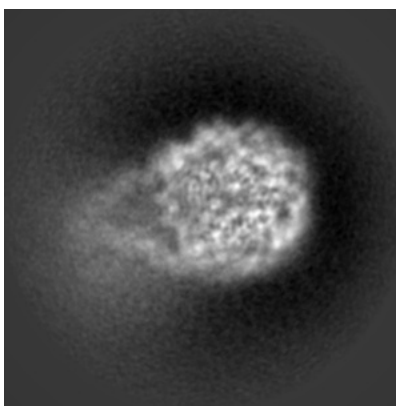
Images derived from a raw map, generated by summing the deposited half-maps, are presented below the corresponding image components of the primary map to allow further visual inspection and comparison with those of the primary map.

### 6.1 Orthogonal projections [i](#)

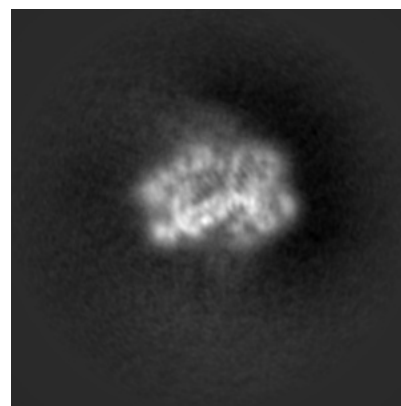
#### 6.1.1 Primary map



X

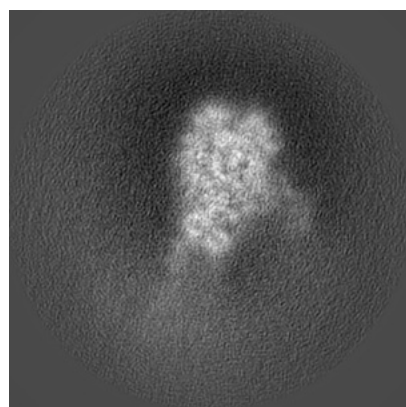


Y

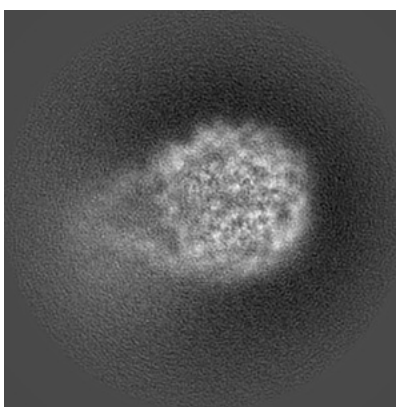


Z

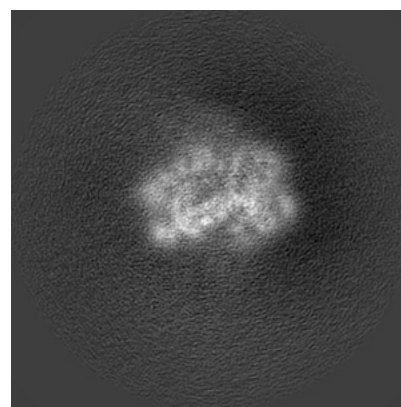
#### 6.1.2 Raw map



X



Y



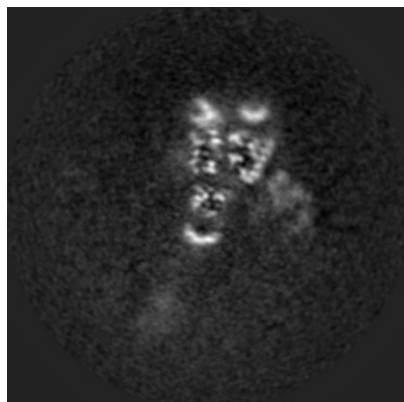
Z

The images above show the map projected in three orthogonal directions.

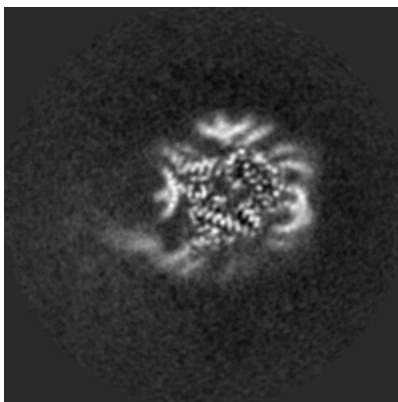


## 6.2 Central slices [i](#)

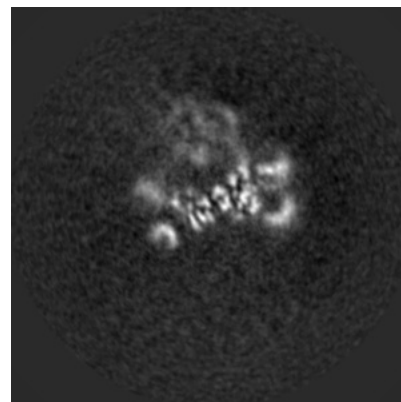
### 6.2.1 Primary map



X Index: 120

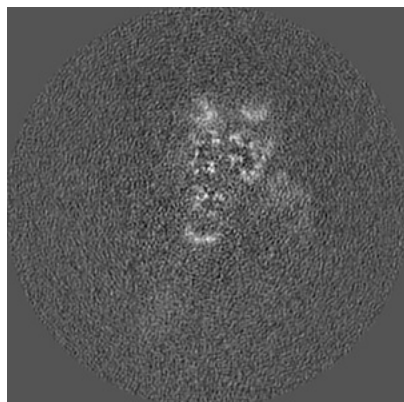


Y Index: 120

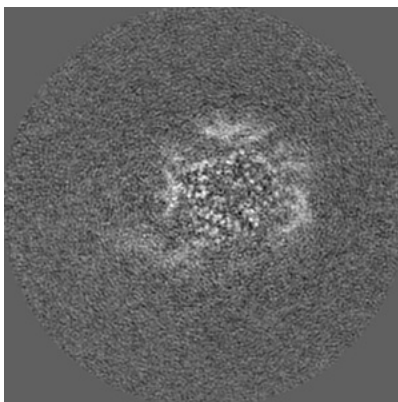


Z Index: 120

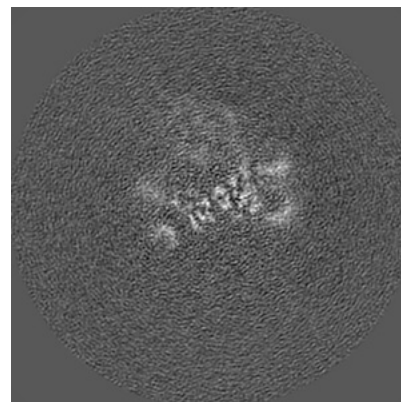
### 6.2.2 Raw map



X Index: 120



Y Index: 120



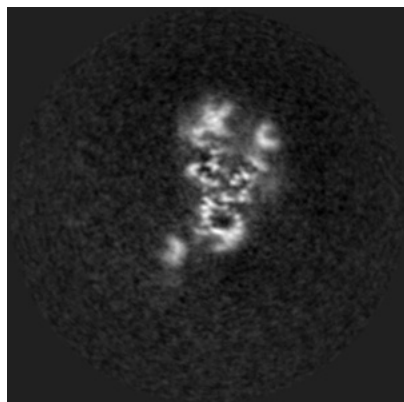
Z Index: 120

The images above show central slices of the map in three orthogonal directions.

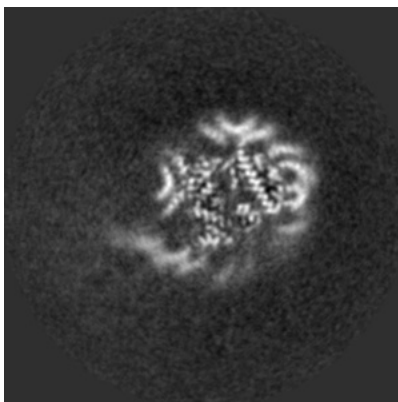


## 6.3 Largest variance slices [i](#)

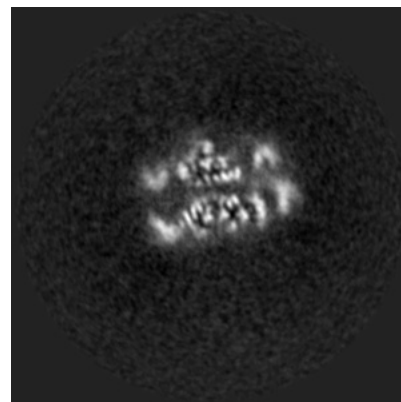
### 6.3.1 Primary map



X Index: 145

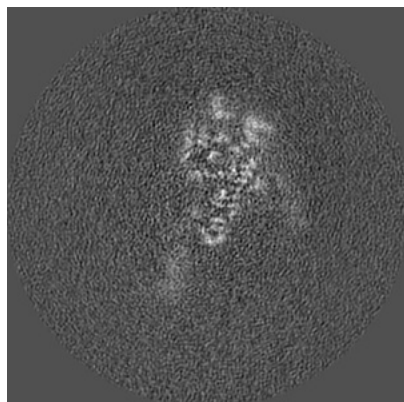


Y Index: 123

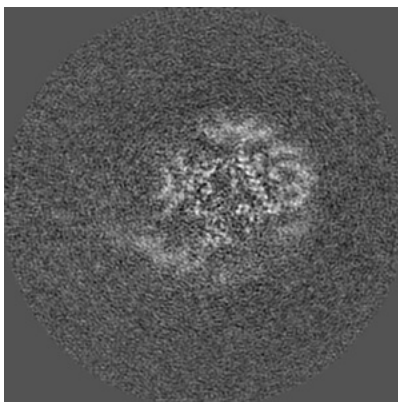


Z Index: 152

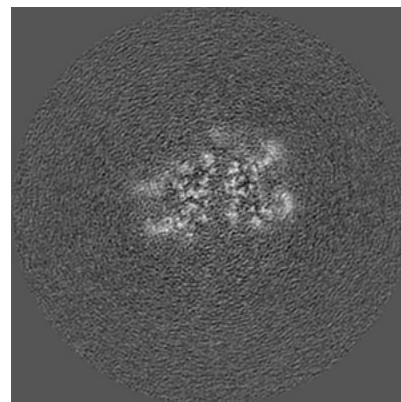
### 6.3.2 Raw map



X Index: 134



Y Index: 123



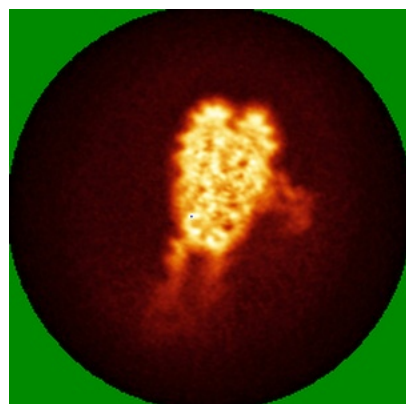
Z Index: 139

The images above show the largest variance slices of the map in three orthogonal directions.

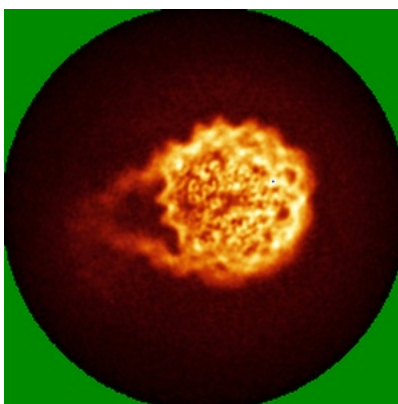


## 6.4 Orthogonal standard-deviation projections (False-color) [i](#)

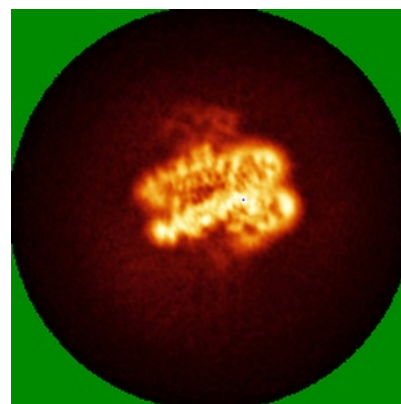
### 6.4.1 Primary map



X

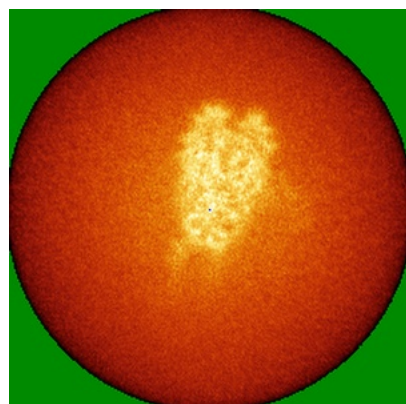


Y

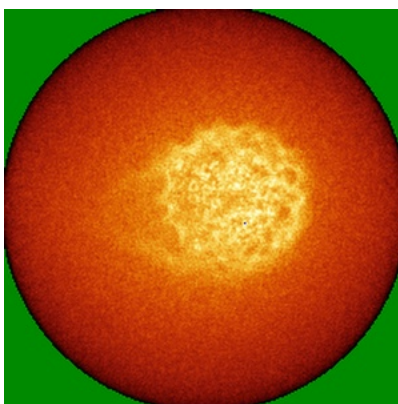


Z

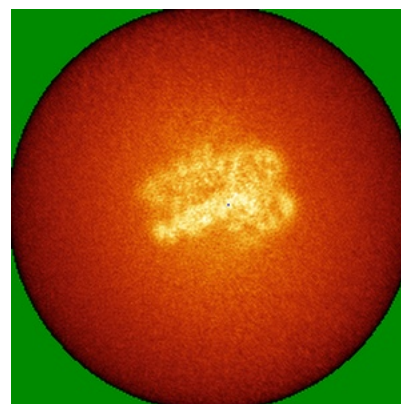
### 6.4.2 Raw map



X



Y



Z

The images above show the map standard deviation projections with false color in three orthogonal directions. Minimum values are shown in green, max in blue, and dark to light orange shades represent small to large values respectively.



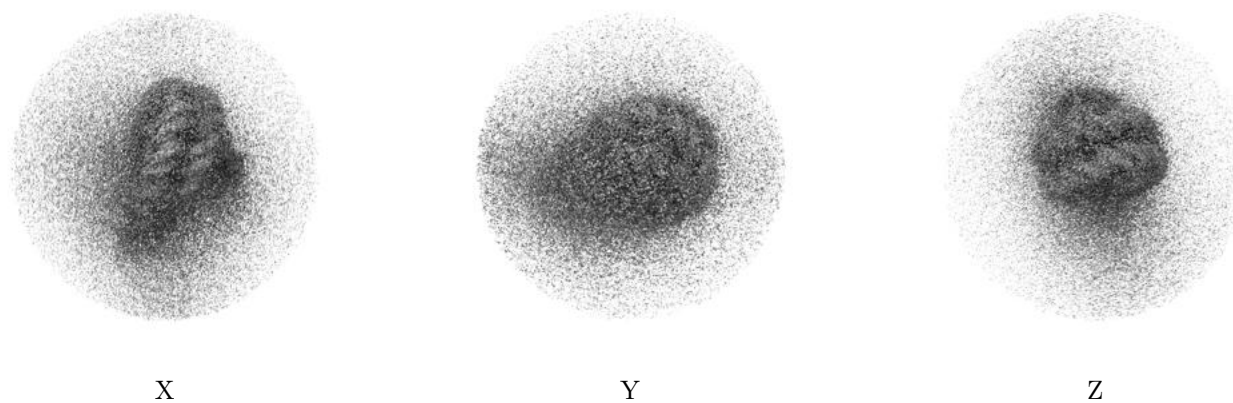
## 6.5 Orthogonal surface views [i](#)

### 6.5.1 Primary map



The images above show the 3D surface view of the map at the recommended contour level 0.0028. These images, in conjunction with the slice images, may facilitate assessment of whether an appropriate contour level has been provided.

### 6.5.2 Raw map



These images show the 3D surface of the raw map. The raw map's contour level was selected so that its surface encloses the same volume as the primary map does at its recommended contour level.



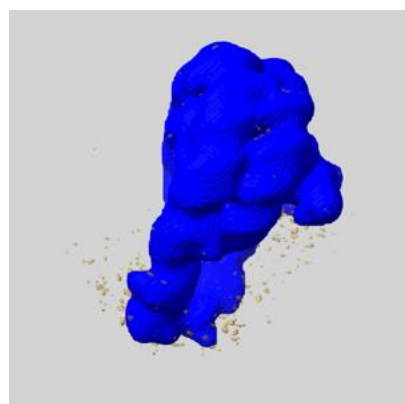
## 6.6 Mask visualisation [i](#)

This section shows the 3D surface view of the primary map at 50% transparency overlaid with the specified mask at 0% transparency

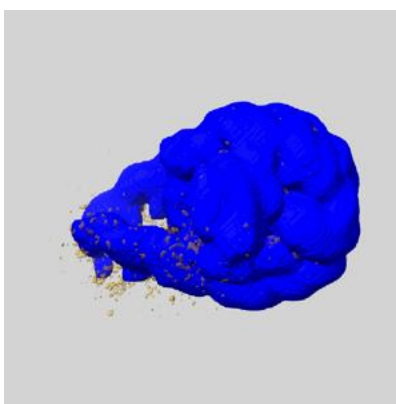
A mask typically either:

- Encompasses the whole structure
- Separates out a domain, a functional unit, a monomer or an area of interest from a larger structure

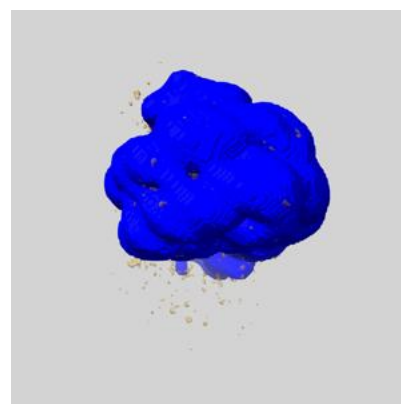
### 6.6.1 emd\_64809\_msk\_1.map [i](#)



X



Y



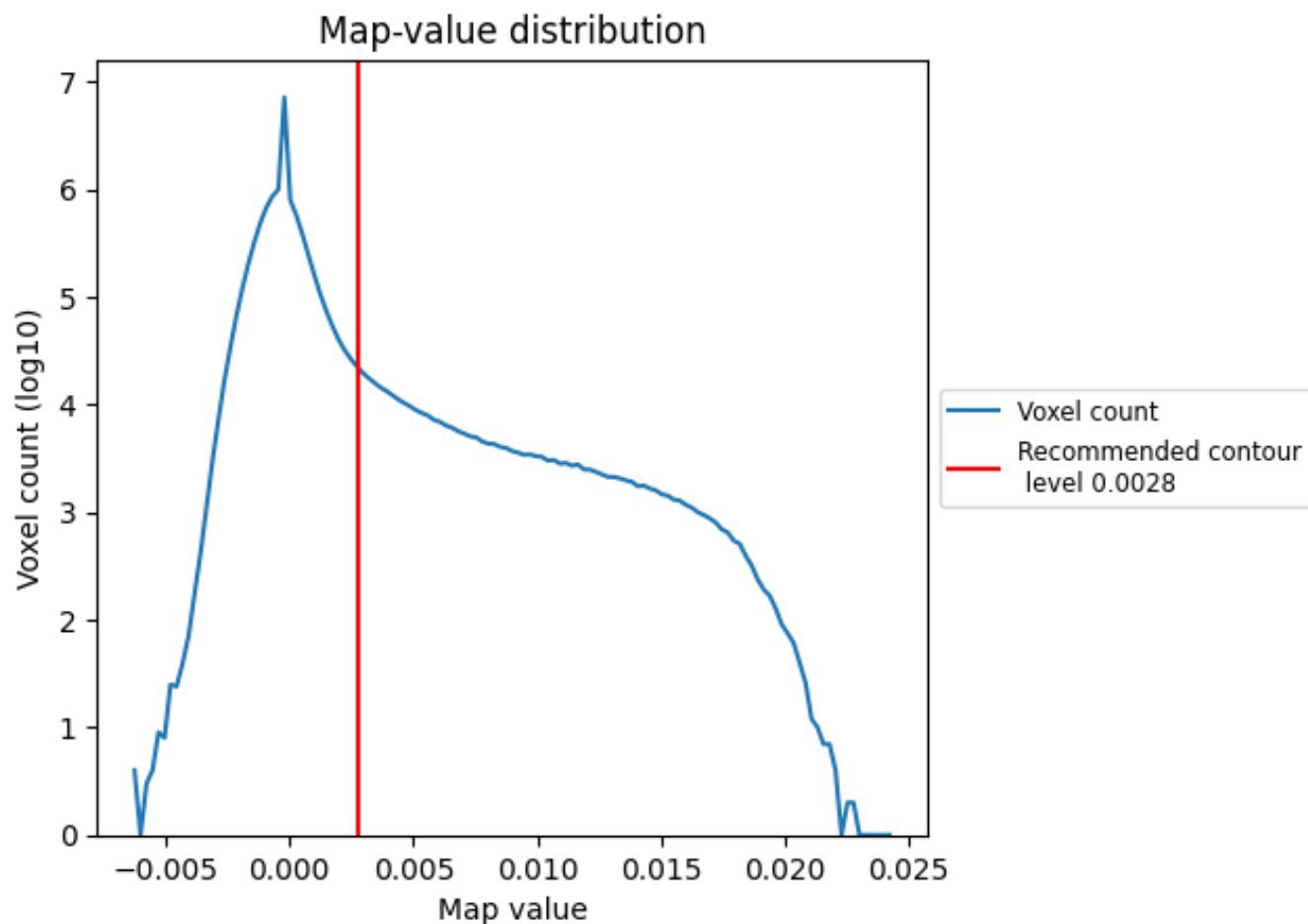
Z



## 7 Map analysis [i](#)

This section contains the results of statistical analysis of the map.

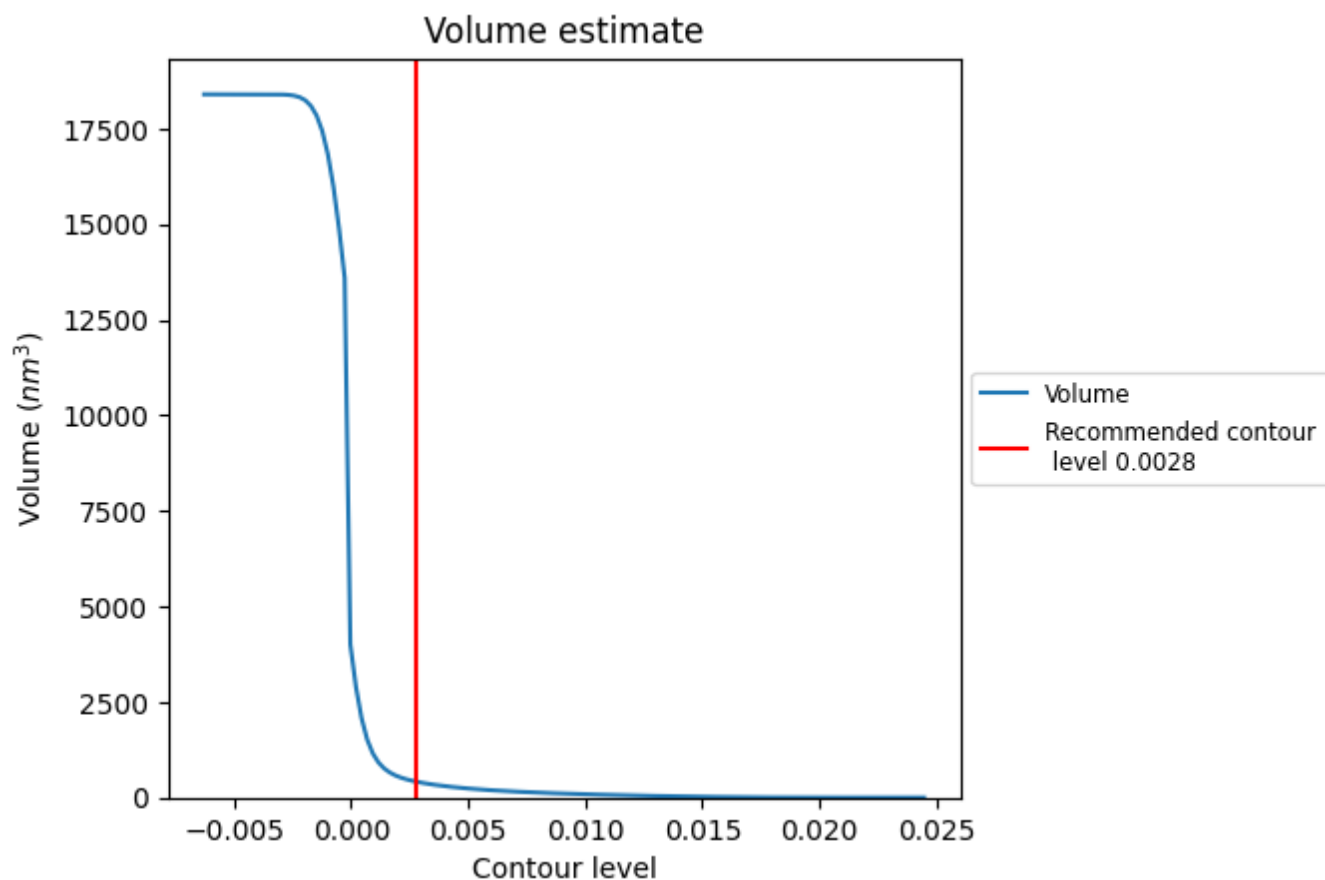
### 7.1 Map-value distribution [i](#)



The map-value distribution is plotted in 128 intervals along the x-axis. The y-axis is logarithmic. A spike in this graph at zero usually indicates that the volume has been masked.



## 7.2 Volume estimate [i](#)

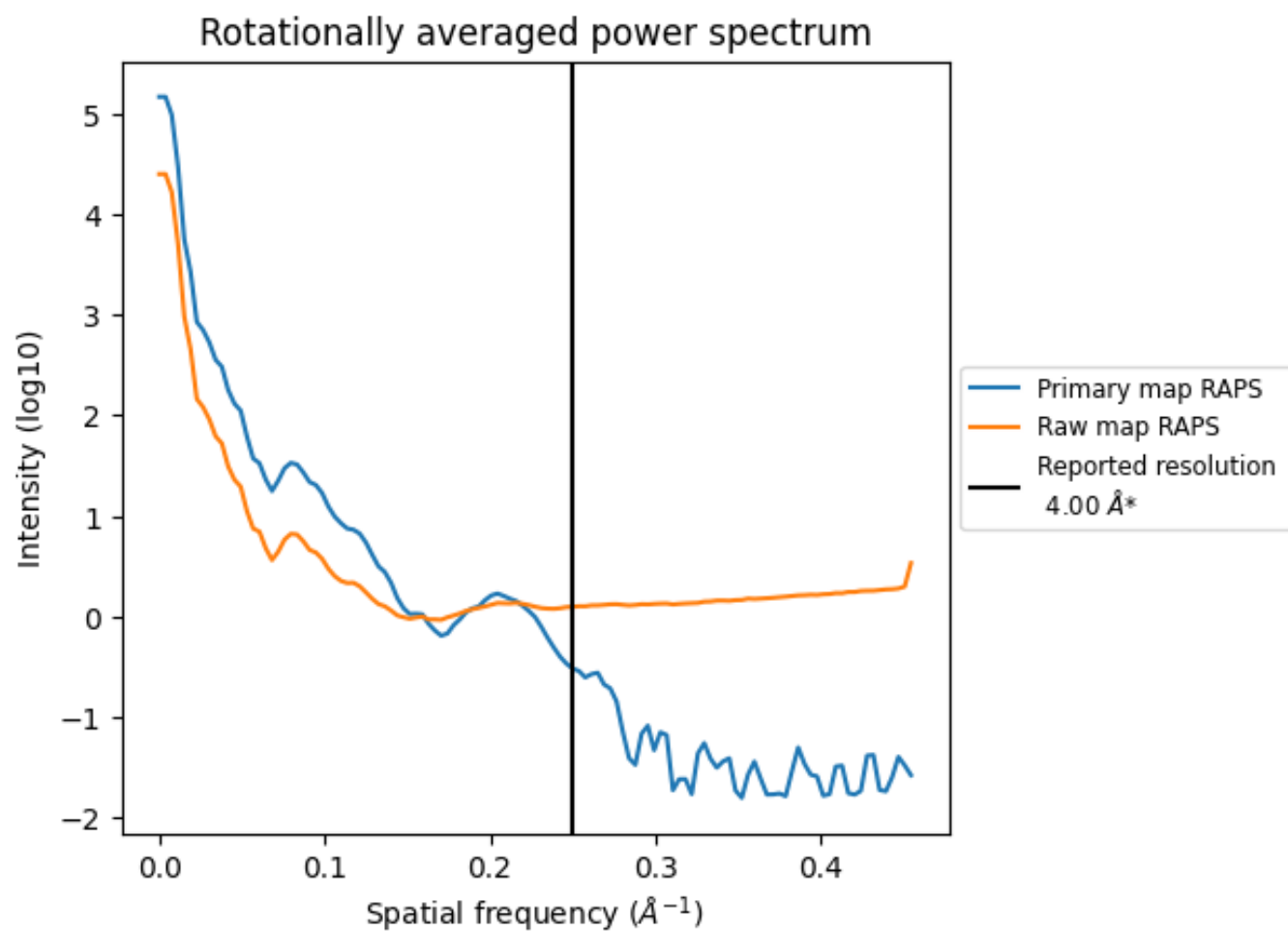


The volume at the recommended contour level is 415 nm<sup>3</sup>; this corresponds to an approximate mass of 375 kDa.

The volume estimate graph shows how the enclosed volume varies with the contour level. The recommended contour level is shown as a vertical line and the intersection between the line and the curve gives the volume of the enclosed surface at the given level.



### 7.3 Rotationally averaged power spectrum [i](#)



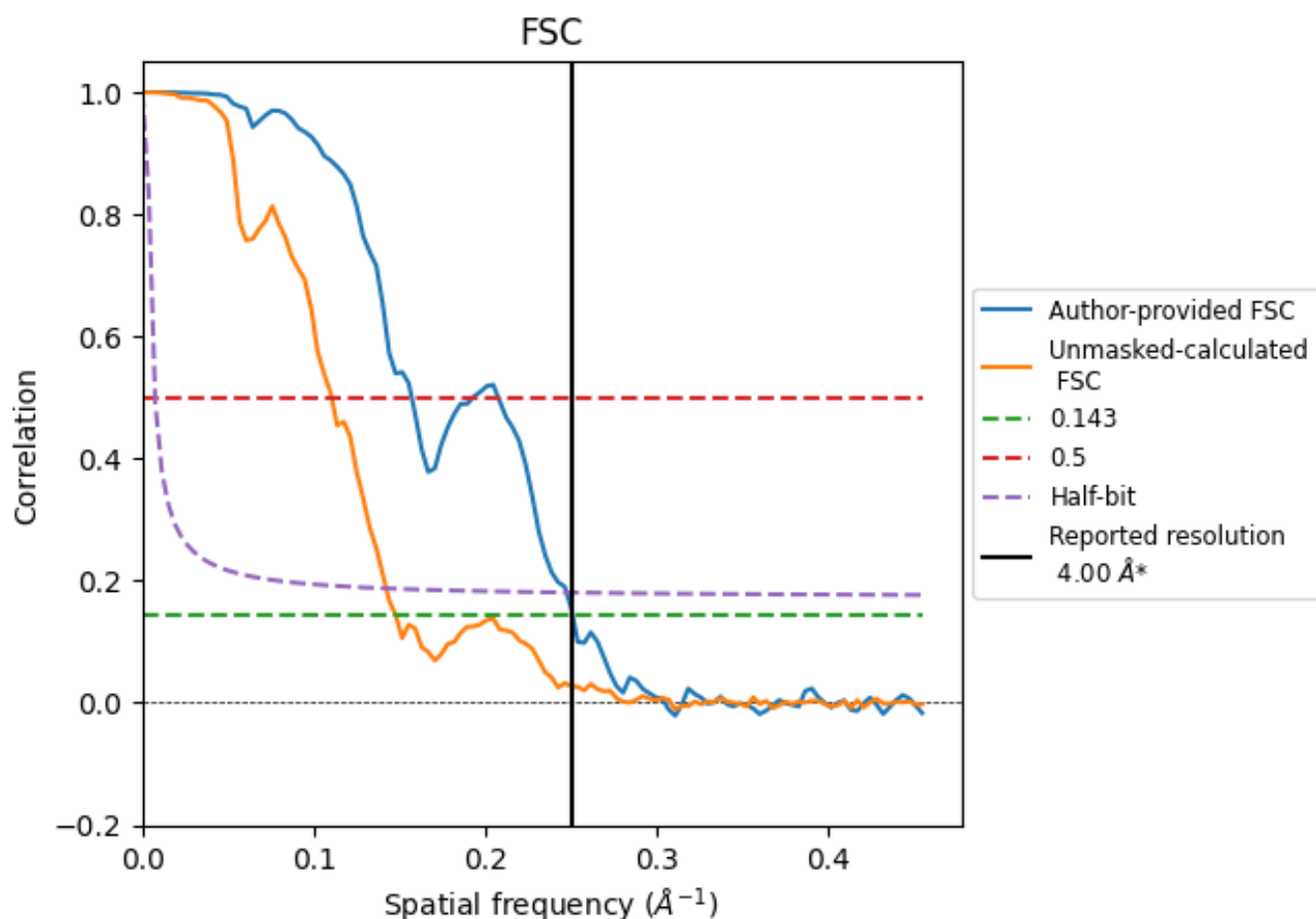
\*Reported resolution corresponds to spatial frequency of 0.250  $\text{\AA}^{-1}$



## 8 Fourier-Shell correlation [i](#)

Fourier-Shell Correlation (FSC) is the most commonly used method to estimate the resolution of single-particle and subtomogram-averaged maps. The shape of the curve depends on the imposed symmetry, mask and whether or not the two 3D reconstructions used were processed from a common reference. The reported resolution is shown as a black line. A curve is displayed for the half-bit criterion in addition to lines showing the 0.143 gold standard cut-off and 0.5 cut-off.

### 8.1 FSC [i](#)



\*Reported resolution corresponds to spatial frequency of 0.250  $\text{\AA}^{-1}$



## 8.2 Resolution estimates [i](#)

Resolution estimate (Å)	Estimation criterion (FSC cut-off)		
	0.143	0.5	Half-bit
Reported by author	4.00	-	-
Author-provided FSC curve	3.99	6.37	4.05
Unmasked-calculated*	6.77	9.06	7.03

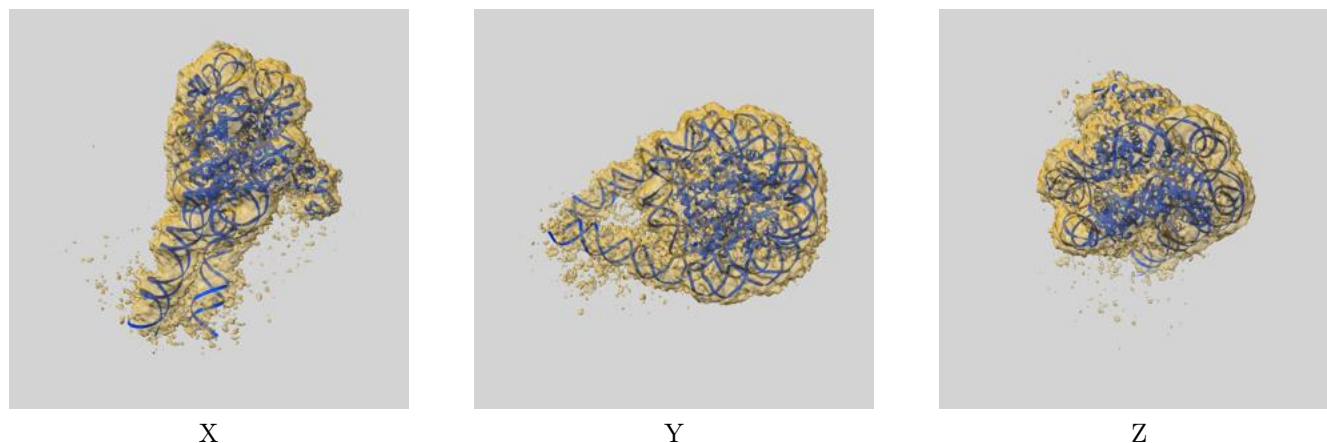
\*Resolution estimate based on FSC curve calculated by comparison of deposited half-maps. The value from deposited half-maps intersecting FSC 0.143 CUT-OFF 6.77 differs from the reported value 4.0 by more than 10 %



## 9 Map-model fit [i](#)

This section contains information regarding the fit between EMDB map EMD-64809 and PDB model 9V6X. Per-residue inclusion information can be found in section [3](#) on page [6](#).

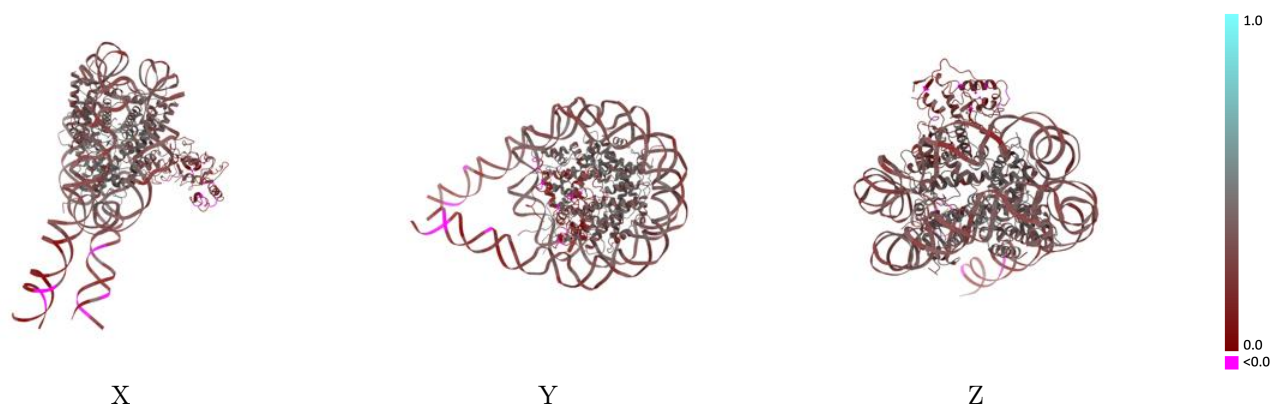
### 9.1 Map-model overlay [i](#)



The images above show the 3D surface view of the map at the recommended contour level 0.0028 at 50% transparency in yellow overlaid with a ribbon representation of the model coloured in blue. These images allow for the visual assessment of the quality of fit between the atomic model and the map.

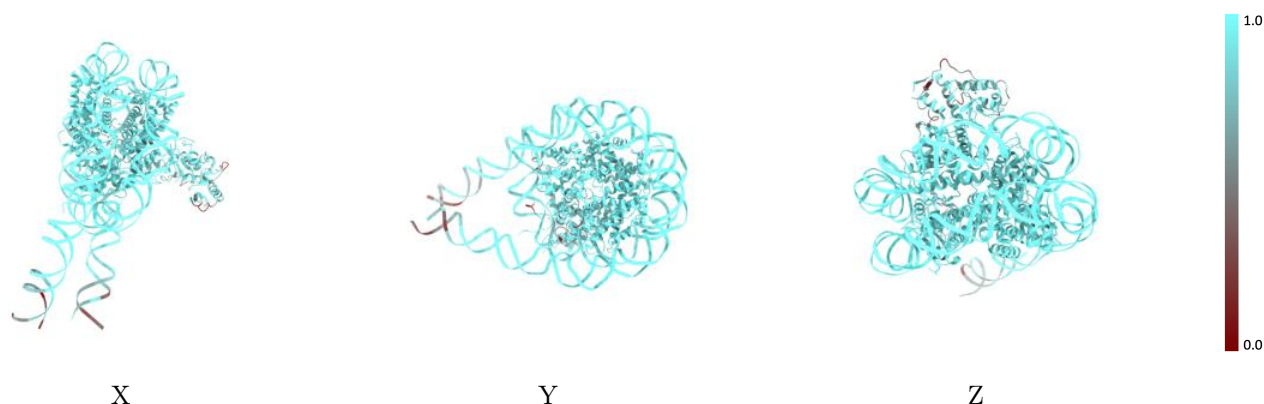


## 9.2 Q-score mapped to coordinate model [i](#)



The images above show the model with each residue coloured according to its Q-score. This shows their resolvability in the map with higher Q-score values reflecting better resolvability. Please note: Q-score is calculating the resolvability of atoms, and thus high values are only expected at resolutions at which atoms can be resolved. Low Q-score values may therefore be expected for many entries.

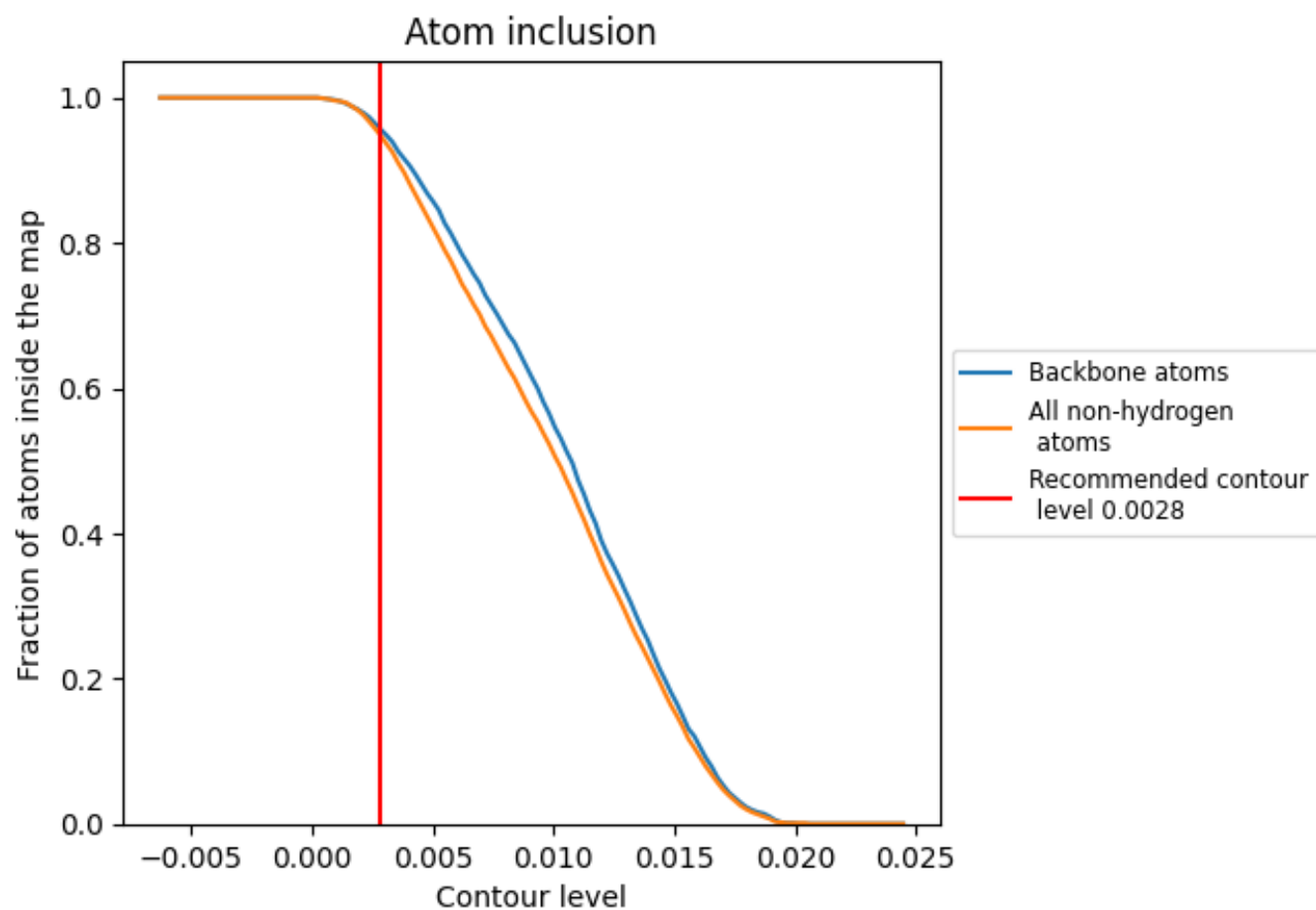
## 9.3 Atom inclusion mapped to coordinate model [i](#)



The images above show the model with each residue coloured according to its atom inclusion. This shows to what extent they are inside the map at the recommended contour level (0.0028).



## 9.4 Atom inclusion [i](#)



At the recommended contour level, 96% of all backbone atoms, 95% of all non-hydrogen atoms, are inside the map.



9.5 Map-model fit summary ⓘ

The table lists the average atom inclusion at the recommended contour level (0.0028) and Q-score for the entire model and for each chain.

Chain	Atom inclusion	Q-score
All	<div></div> 0.9500	<div></div> 0.3070
A	<div></div> 0.9880	<div></div> 0.3960
B	<div></div> 0.9970	<div></div> 0.4190
C	<div></div> 0.9880	<div></div> 0.3680
D	<div></div> 0.9990	<div></div> 0.3700
E	<div></div> 0.9880	<div></div> 0.3900
F	<div></div> 0.9940	<div></div> 0.4030
G	<div></div> 0.9960	<div></div> 0.3900
H	<div></div> 0.9990	<div></div> 0.3760
I	<div></div> 0.9600	<div></div> 0.2700
J	<div></div> 0.9470	<div></div> 0.2700
M	<div></div> 0.8450	<div></div> 0.1870
N	<div></div> 0.7970	<div></div> 0.2000

