



wwPDB EM Validation Summary Report ⓘ

May 26, 2026 – 12:58 PM JST

PDB ID : 9V6L / pdb_00009v6l
EMDB ID : EMD-64802
Title : Psl polysaccharide related protein structures
Authors : Jiao, L.; Yihua, H.
Deposited on : 2025-05-27
Resolution : 3.06 Å(reported)

This is a wwPDB EM Validation Summary Report for a publicly released PDB entry.

We welcome your comments at validation@mail.wwpdb.org

A user guide is available at

<https://www.wwpdb.org/validation/2017/EMValidationReportHelp>

with specific help available everywhere you see the ⓘ symbol.

The types of validation reports are described at

<http://www.wwpdb.org/validation/2017/FAQs#types>.

The following versions of software and data (see [references ⓘ](#)) were used in the production of this report:

EMDB validation analysis : 0.0.1.dev132
MolProbity : 4-5-2 with Phenix2.0
Percentile statistics : 20250101.v01 (using entries in the PDB archive January 1st 2025)
EM percentile statistics : 202505.v01 (Using data in the EMDb archive up until May 2025)
MapQ : 1.9.13
Ideal geometry (proteins) : Engh & Huber (2001)
Ideal geometry (DNA, RNA) : Parkinson et al. (1996)
Validation Pipeline (wwPDB-VP) : 2.49

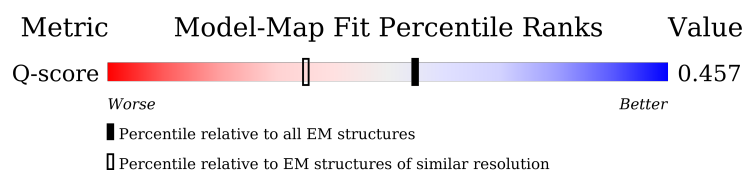
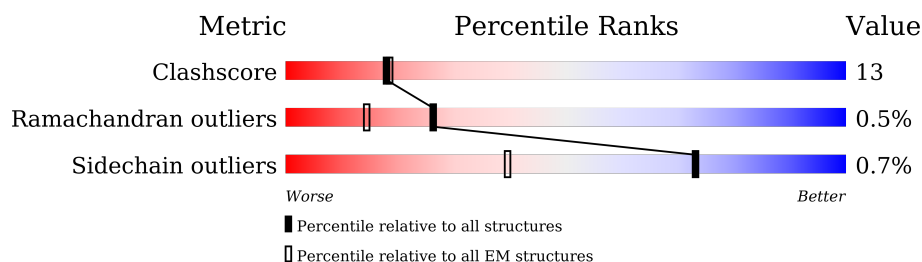
1 Overall quality at a glance

The following experimental techniques were used to determine the structure:

ELECTRON MICROSCOPY

The reported resolution of this entry is 3.06 Å.

Percentile scores (ranging between 0-100) for global validation metrics of the entry are shown in the following graphic. The table shows the number of entries on which the scores are based.



Metric	Whole archive (#Entries)	EM structures (#Entries)	Similar EM resolution (#Entries, resolution range(Å))
Clashscore	229148	23984	-
Ramachandran outliers	224038	23583	-
Sidechain outliers	223484	23102	-
Q-score	-	25397	13976 (2.56 - 3.56)

The table below summarises the geometric issues observed across the polymeric chains and their fit to the map. The red, orange, yellow and green segments of the bar indicate the fraction of residues that contain outliers for ≥ 3 , 2, 1 and 0 types of geometric quality criteria respectively. A grey segment represents the fraction of residues that are not modelled. The numeric value for each fraction is indicated below the corresponding segment, with a dot representing fractions $\leq 5\%$. The upper red bar (where present) indicates the fraction of residues that have poor fit to the EM map (all-atom inclusion $< 40\%$). The numeric value is given above the bar.

Mol	Chain	Length	Quality of chain
1	A	670	<div> <div>10%</div> <div>47% 17% 35%</div> </div>
1	B	670	<div> <div>10%</div> <div>47% 16% 35%</div> </div>
1	E	670	<div> <div>10%</div> <div>47% 17% 35%</div> </div>
1	I	670	<div> <div>10%</div> <div>47% 17% 35%</div> </div>

Continued on next page...

Continued from previous page...

Mol	Chain	Length	Quality of chain
1	M	670	
1	P	670	
1	S	670	
1	W	670	
2	D	256	
2	G	256	
2	K	256	
2	L	256	
2	O	256	
2	R	256	
2	V	256	
2	Y	256	

2 Entry composition

There are 2 unique types of molecules in this entry. The entry contains 41816 atoms, of which 0 are hydrogens and 0 are deuteriums.

In the tables below, the AltConf column contains the number of residues with at least one atom in alternate conformation and the Trace column contains the number of residues modelled with at most 2 atoms.

- Molecule 1 is a protein called Biofilm formation protein PsIE.

Mol	Chain	Residues	Atoms					AltConf	Trace
1	A	437	Total	C	N	O	S	0	0
			3487	2184	623	674	6		
1	B	437	Total	C	N	O	S	0	0
			3487	2184	623	674	6		
1	E	437	Total	C	N	O	S	0	0
			3487	2184	623	674	6		
1	I	437	Total	C	N	O	S	0	0
			3487	2184	623	674	6		
1	M	437	Total	C	N	O	S	0	0
			3487	2184	623	674	6		
1	P	437	Total	C	N	O	S	0	0
			3487	2184	623	674	6		
1	S	437	Total	C	N	O	S	0	0
			3487	2184	623	674	6		
1	W	437	Total	C	N	O	S	0	0
			3487	2184	623	674	6		

There are 64 discrepancies between the modelled and reference sequences:

Chain	Residue	Modelled	Actual	Comment	Reference
A	663	TRP	-	expression tag	UNP A0A073A0N3
A	664	SER	-	expression tag	UNP A0A073A0N3
A	665	HIS	-	expression tag	UNP A0A073A0N3
A	666	PRO	-	expression tag	UNP A0A073A0N3
A	667	GLN	-	expression tag	UNP A0A073A0N3
A	668	PHE	-	expression tag	UNP A0A073A0N3
A	669	GLU	-	expression tag	UNP A0A073A0N3
A	670	LYS	-	expression tag	UNP A0A073A0N3
B	663	TRP	-	expression tag	UNP A0A073A0N3
B	664	SER	-	expression tag	UNP A0A073A0N3
B	665	HIS	-	expression tag	UNP A0A073A0N3
B	666	PRO	-	expression tag	UNP A0A073A0N3
B	667	GLN	-	expression tag	UNP A0A073A0N3
B	668	PHE	-	expression tag	UNP A0A073A0N3

Continued on next page...

Continued from previous page...

Chain	Residue	Modelled	Actual	Comment	Reference
B	669	GLU	-	expression tag	UNP A0A073A0N3
B	670	LYS	-	expression tag	UNP A0A073A0N3
E	663	TRP	-	expression tag	UNP A0A073A0N3
E	664	SER	-	expression tag	UNP A0A073A0N3
E	665	HIS	-	expression tag	UNP A0A073A0N3
E	666	PRO	-	expression tag	UNP A0A073A0N3
E	667	GLN	-	expression tag	UNP A0A073A0N3
E	668	PHE	-	expression tag	UNP A0A073A0N3
E	669	GLU	-	expression tag	UNP A0A073A0N3
E	670	LYS	-	expression tag	UNP A0A073A0N3
I	663	TRP	-	expression tag	UNP A0A073A0N3
I	664	SER	-	expression tag	UNP A0A073A0N3
I	665	HIS	-	expression tag	UNP A0A073A0N3
I	666	PRO	-	expression tag	UNP A0A073A0N3
I	667	GLN	-	expression tag	UNP A0A073A0N3
I	668	PHE	-	expression tag	UNP A0A073A0N3
I	669	GLU	-	expression tag	UNP A0A073A0N3
I	670	LYS	-	expression tag	UNP A0A073A0N3
M	663	TRP	-	expression tag	UNP A0A073A0N3
M	664	SER	-	expression tag	UNP A0A073A0N3
M	665	HIS	-	expression tag	UNP A0A073A0N3
M	666	PRO	-	expression tag	UNP A0A073A0N3
M	667	GLN	-	expression tag	UNP A0A073A0N3
M	668	PHE	-	expression tag	UNP A0A073A0N3
M	669	GLU	-	expression tag	UNP A0A073A0N3
M	670	LYS	-	expression tag	UNP A0A073A0N3
P	663	TRP	-	expression tag	UNP A0A073A0N3
P	664	SER	-	expression tag	UNP A0A073A0N3
P	665	HIS	-	expression tag	UNP A0A073A0N3
P	666	PRO	-	expression tag	UNP A0A073A0N3
P	667	GLN	-	expression tag	UNP A0A073A0N3
P	668	PHE	-	expression tag	UNP A0A073A0N3
P	669	GLU	-	expression tag	UNP A0A073A0N3
P	670	LYS	-	expression tag	UNP A0A073A0N3
S	663	TRP	-	expression tag	UNP A0A073A0N3
S	664	SER	-	expression tag	UNP A0A073A0N3
S	665	HIS	-	expression tag	UNP A0A073A0N3
S	666	PRO	-	expression tag	UNP A0A073A0N3
S	667	GLN	-	expression tag	UNP A0A073A0N3
S	668	PHE	-	expression tag	UNP A0A073A0N3
S	669	GLU	-	expression tag	UNP A0A073A0N3
S	670	LYS	-	expression tag	UNP A0A073A0N3

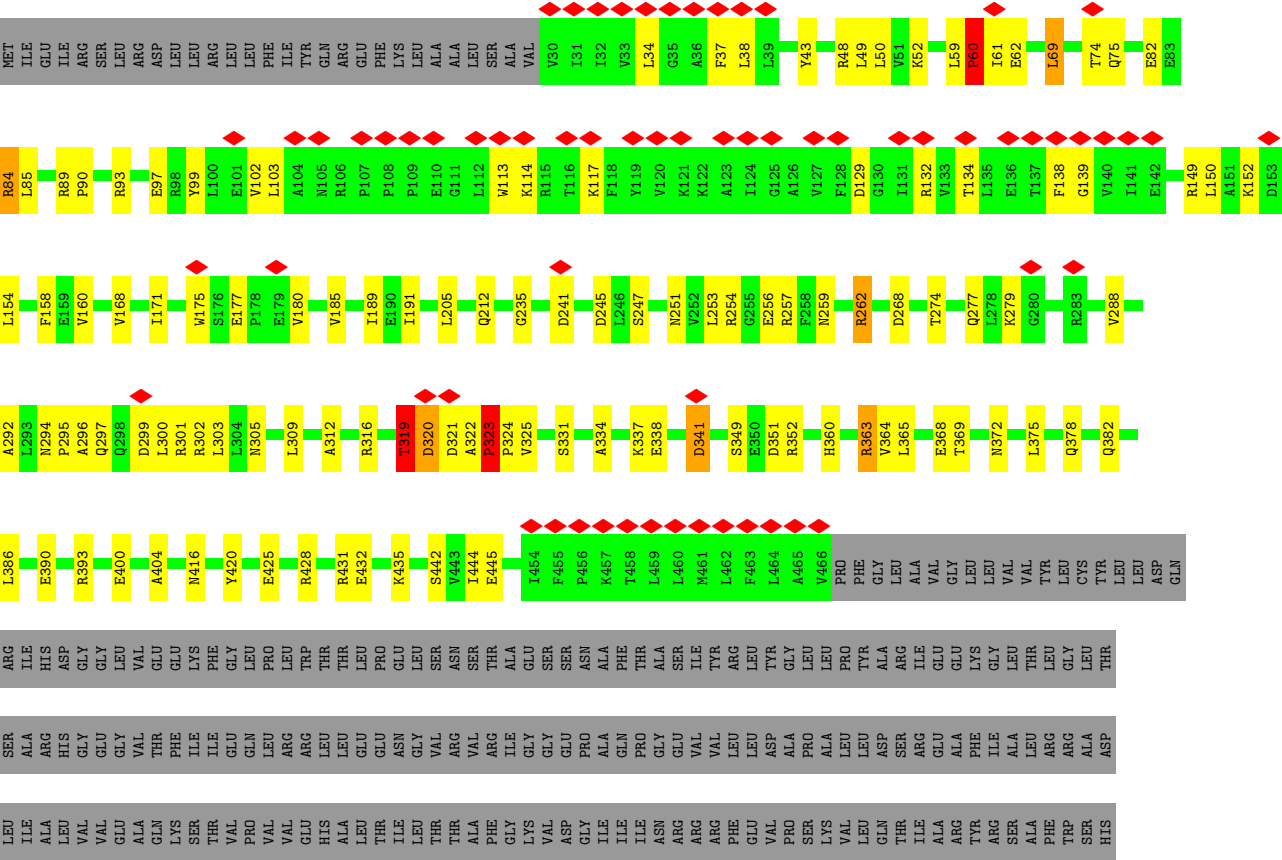
Continued on next page...

Continued from previous page...

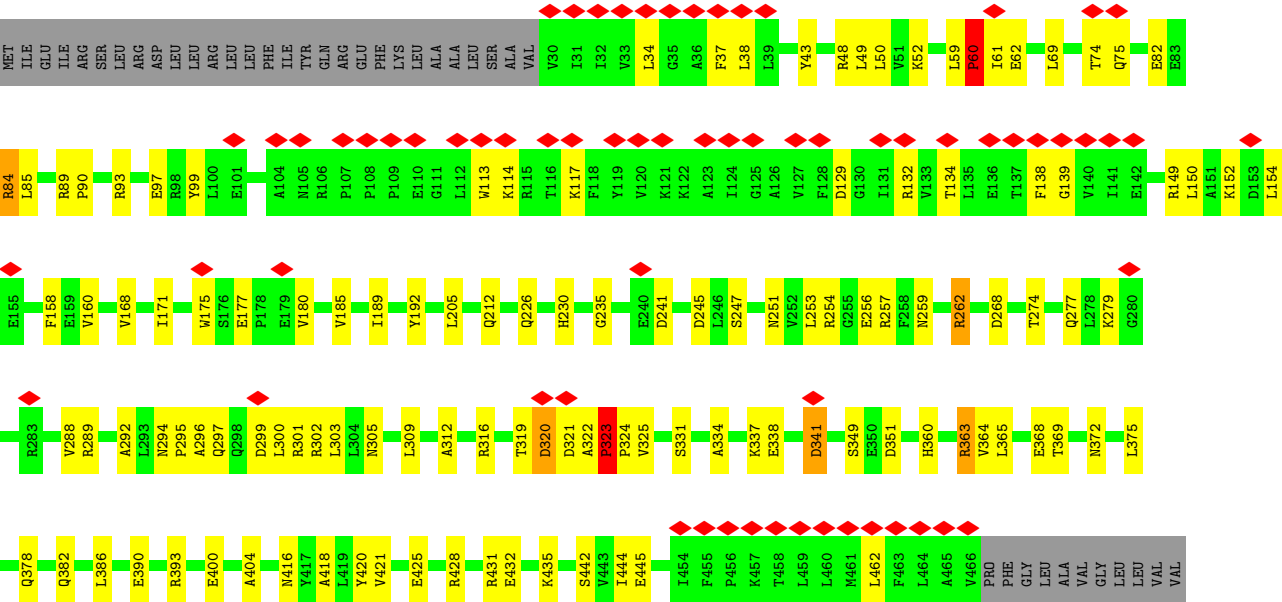
Chain	Residue	Modelled	Actual	Comment	Reference
W	663	TRP	-	expression tag	UNP A0A073A0N3
W	664	SER	-	expression tag	UNP A0A073A0N3
W	665	HIS	-	expression tag	UNP A0A073A0N3
W	666	PRO	-	expression tag	UNP A0A073A0N3
W	667	GLN	-	expression tag	UNP A0A073A0N3
W	668	PHE	-	expression tag	UNP A0A073A0N3
W	669	GLU	-	expression tag	UNP A0A073A0N3
W	670	LYS	-	expression tag	UNP A0A073A0N3

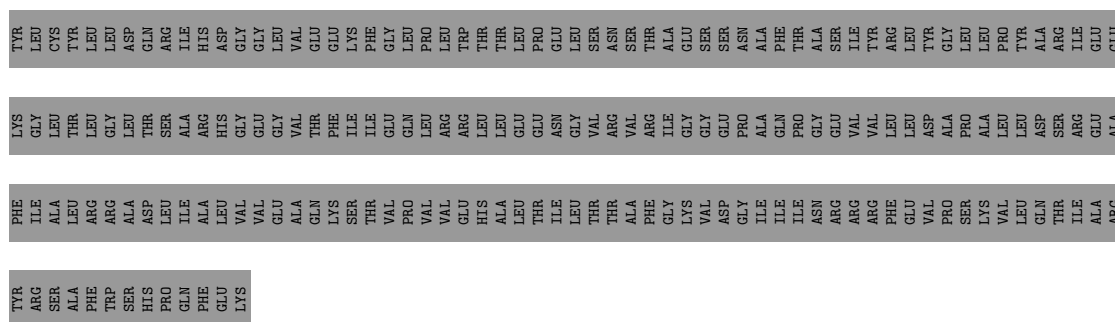
- Molecule 2 is a protein called Biofilm formation protein PslD.

Mol	Chain	Residues	Atoms					AltConf	Trace
2	D	227	Total	C	N	O	S	0	0
			1740	1097	313	323	7		
2	G	227	Total	C	N	O	S	0	0
			1740	1097	313	323	7		
2	K	227	Total	C	N	O	S	0	0
			1740	1097	313	323	7		
2	L	227	Total	C	N	O	S	0	0
			1740	1097	313	323	7		
2	O	227	Total	C	N	O	S	0	0
			1740	1097	313	323	7		
2	R	227	Total	C	N	O	S	0	0
			1740	1097	313	323	7		
2	V	227	Total	C	N	O	S	0	0
			1740	1097	313	323	7		
2	Y	227	Total	C	N	O	S	0	0
			1740	1097	313	323	7		

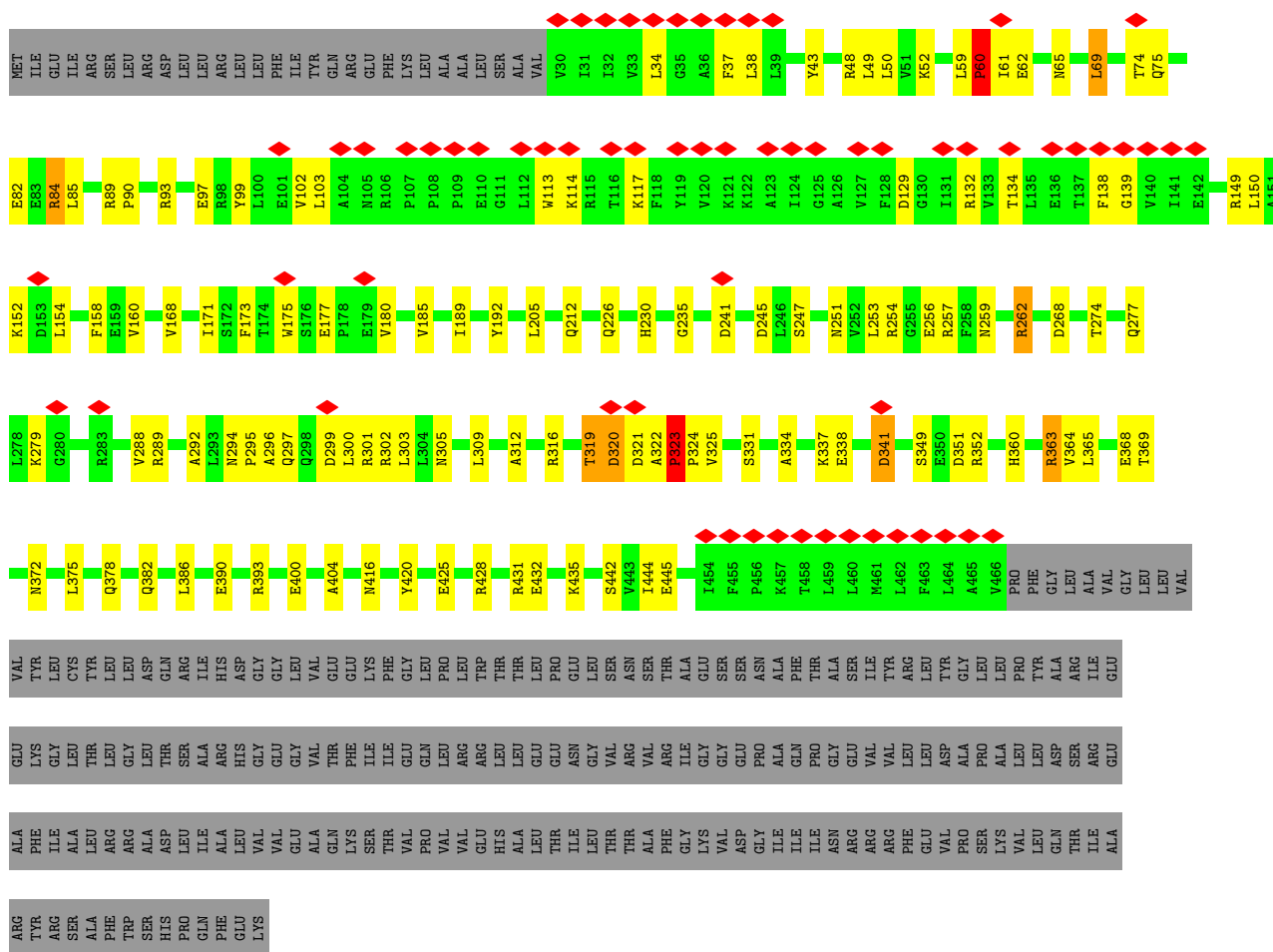


• Molecule 1: Biofilm formation protein PsIe





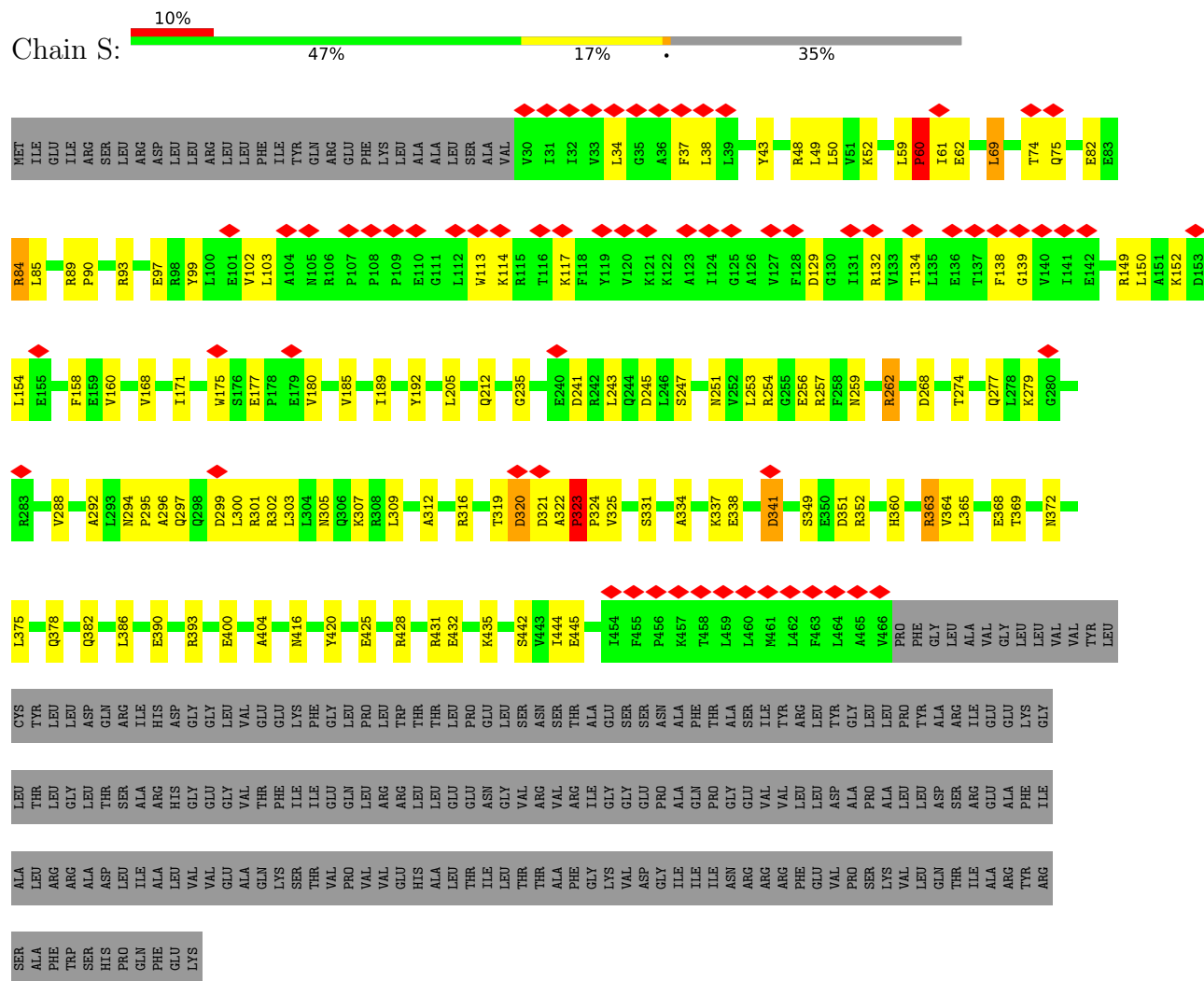
- Molecule 1: Biofilm formation protein PslE



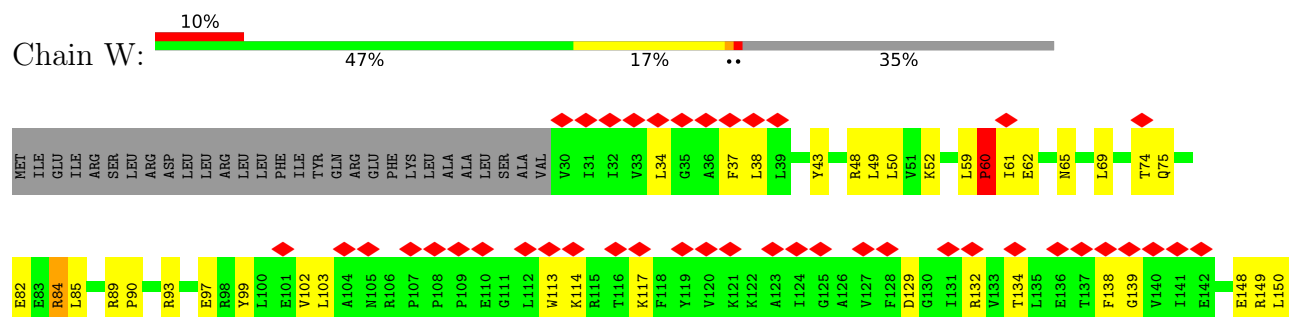
- Molecule 1: Biofilm formation protein PsIE

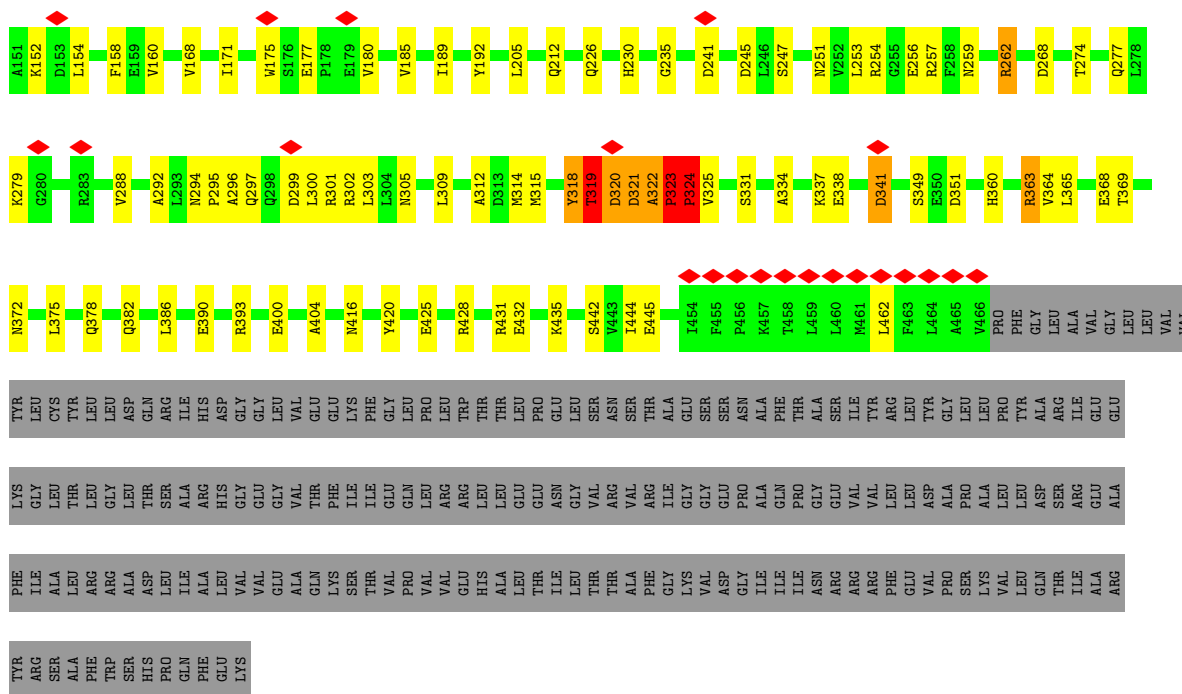


- Molecule 1: Biofilm formation protein PsIE

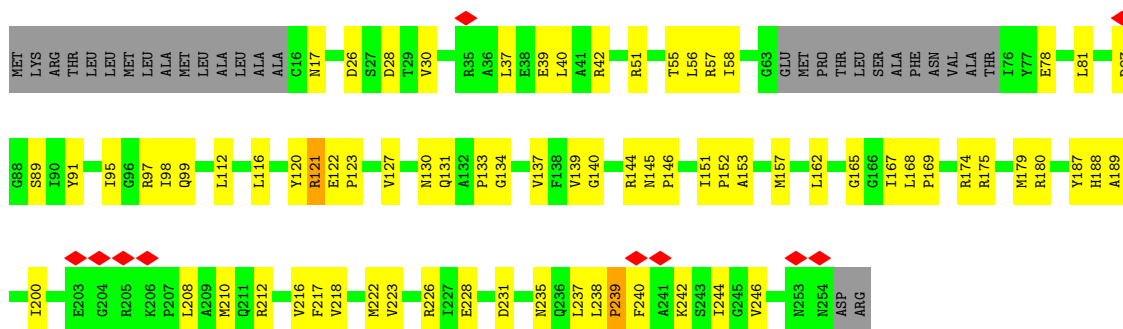


- Molecule 1: Biofilm formation protein PsIE

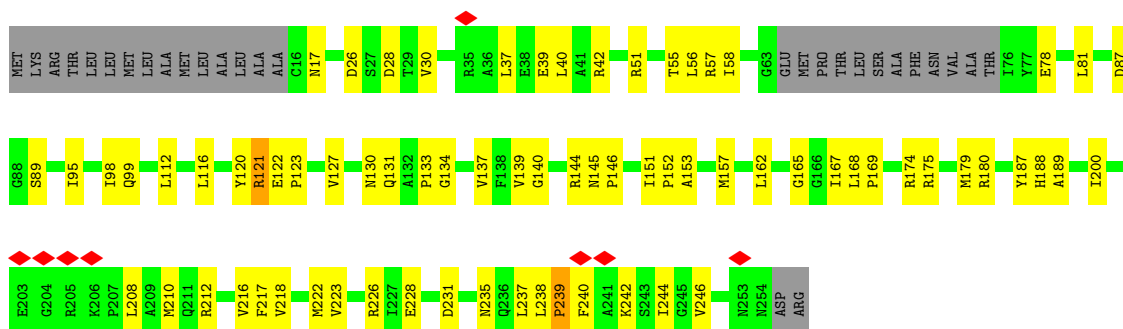




- Molecule 2: Biofilm formation protein PslD

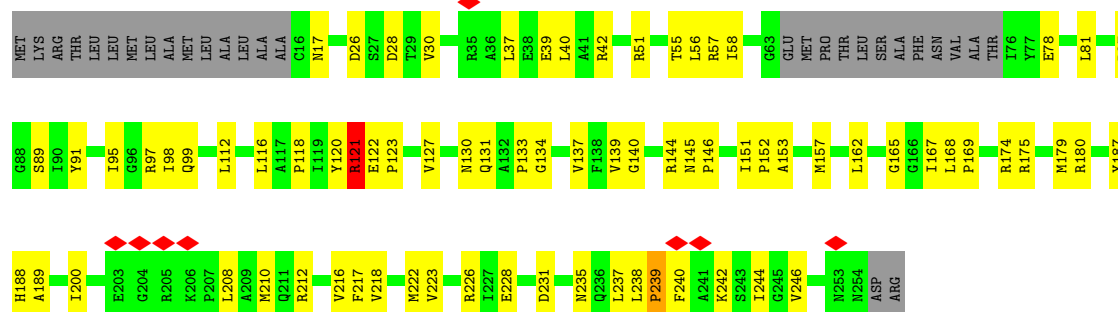


- Molecule 2: Biofilm formation protein PslD



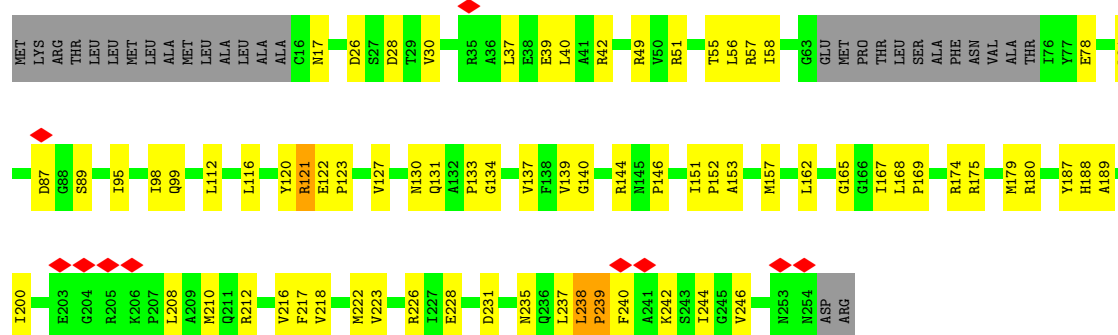
- Molecule 2: Biofilm formation protein PslD

Chain K: 



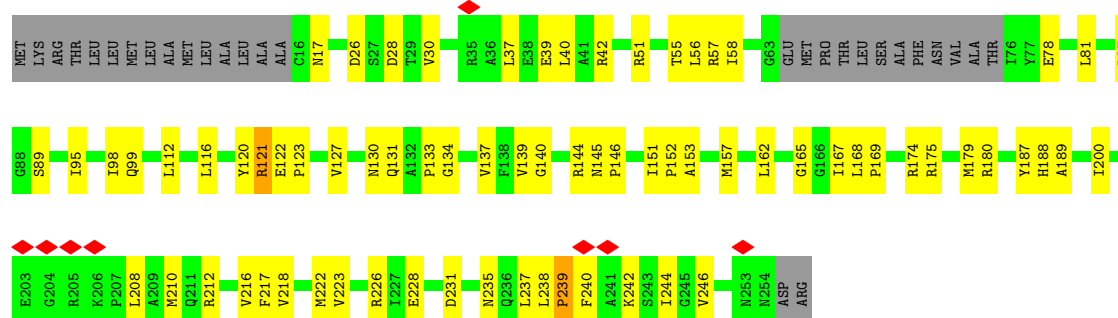
• Molecule 2: Biofilm formation protein PsID

Chain L: 



• Molecule 2: Biofilm formation protein PsID

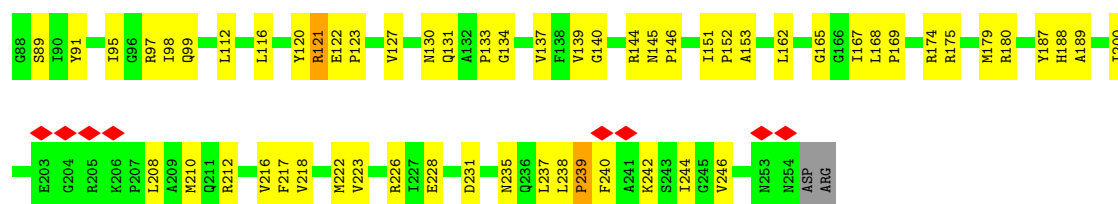
Chain O: 



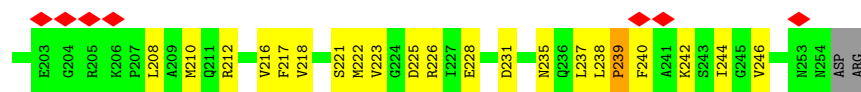
• Molecule 2: Biofilm formation protein PsID

Chain R: 





• Molecule 2: Biofilm formation protein PsID



• Molecule 2: Biofilm formation protein PsID



4 Experimental information

Property	Value	Source
EM reconstruction method	SINGLE PARTICLE	Depositor
Imposed symmetry	POINT, Not provided	
Number of particles used	144299	Depositor
Resolution determination method	FSC 0.143 CUT-OFF	Depositor
CTF correction method	NONE	Depositor
Microscope	TFS KRIOS	Depositor
Voltage (kV)	300	Depositor
Electron dose ($e^-/\text{\AA}^2$)	60	Depositor
Minimum defocus (nm)	1200	Depositor
Maximum defocus (nm)	2000	Depositor
Magnification	96000	Depositor
Image detector	GATAN K3 (6k x 4k)	Depositor
Maximum map value	4.022	Depositor
Minimum map value	-2.446	Depositor
Average map value	-0.000	Depositor
Map value standard deviation	0.053	Depositor
Recommended contour level	0.433	Depositor
Map size (\AA)	640.0, 640.0, 640.0	wwPDB
Map dimensions	640, 640, 640	wwPDB
Map angles ($^\circ$)	90.0, 90.0, 90.0	wwPDB
Pixel spacing (\AA)	1.0, 1.0, 1.0	Depositor

5 Model quality [i](#)

5.1 Standard geometry [i](#)

The Z score for a bond length (or angle) is the number of standard deviations the observed value is removed from the expected value. A bond length (or angle) with $|Z| > 5$ is considered an outlier worth inspection. RMSZ is the root-mean-square of all Z scores of the bond lengths (or angles).

Mol	Chain	Bond lengths		Bond angles	
		RMSZ	# Z >5	RMSZ	# Z >5
1	A	0.40	0/3534	0.98	20/4781 (0.4%)
1	B	0.39	0/3534	0.88	18/4781 (0.4%)
1	E	0.39	0/3534	0.88	16/4781 (0.3%)
1	I	0.39	0/3534	0.89	17/4781 (0.4%)
1	M	0.39	0/3534	0.91	19/4781 (0.4%)
1	P	0.41	1/3534 (0.0%)	0.87	18/4781 (0.4%)
1	S	0.39	0/3534	0.90	19/4781 (0.4%)
1	W	0.66	4/3534 (0.1%)	1.10	26/4781 (0.5%)
2	D	0.37	0/1773	0.77	1/2410 (0.0%)
2	G	0.38	0/1773	0.78	1/2410 (0.0%)
2	K	0.38	0/1773	0.78	0/2410
2	L	0.37	0/1773	0.77	1/2410 (0.0%)
2	O	0.38	0/1773	0.78	1/2410 (0.0%)
2	R	0.37	0/1773	0.77	1/2410 (0.0%)
2	V	0.38	0/1773	0.78	1/2410 (0.0%)
2	Y	0.37	0/1773	0.77	1/2410 (0.0%)
All	All	0.42	5/42456 (0.0%)	0.88	160/57528 (0.3%)

Chiral center outliers are detected by calculating the chiral volume of a chiral center and verifying if the center is modelled as a planar moiety or with the opposite hand. A planarity outlier is detected by checking planarity of atoms in a peptide group, atoms in a mainchain group or atoms of a sidechain that are expected to be planar.

Mol	Chain	#Chirality outliers	#Planarity outliers
1	A	0	1
1	B	0	1
1	E	0	1
1	I	0	1
1	M	0	1
1	P	0	1
1	S	0	1
1	W	0	1
2	D	0	2

Continued on next page...

Continued from previous page...

Mol	Chain	#Chirality outliers	#Planarity outliers
2	G	0	2
2	K	0	3
2	L	0	2
2	O	0	2
2	R	0	2
2	V	0	2
2	Y	0	3
All	All	0	26

All (5) bond length outliers are listed below:

Mol	Chain	Res	Type	Atoms	Z	Observed(Å)	Ideal(Å)
1	W	324	PRO	N-CD	24.05	1.81	1.47
1	W	323	PRO	N-CD	18.12	1.73	1.47
1	P	318	TYR	CA-C	-6.59	1.43	1.53
1	W	318	TYR	CA-C	-6.17	1.44	1.52
1	W	324	PRO	CA-CB	-5.04	1.46	1.53

The worst 5 of 160 bond angle outliers are listed below:

Mol	Chain	Res	Type	Atoms	Z	Observed(°)	Ideal(°)
1	W	323	PRO	N-CA-C	26.71	143.29	110.70
1	W	323	PRO	N-CA-CB	-23.32	80.46	103.08
1	A	320	ASP	N-CA-C	-19.37	89.17	113.97
1	A	323	PRO	N-CA-C	16.49	130.82	110.70
1	M	320	ASP	CB-CA-C	16.05	129.87	109.16

There are no chirality outliers.

5 of 26 planarity outliers are listed below:

Mol	Chain	Res	Type	Group
1	A	363	ARG	Sidechain
1	B	363	ARG	Sidechain
2	D	238	LEU	Peptide
2	D	239	PRO	Peptide
1	E	363	ARG	Sidechain

5.2 Too-close contacts [i](#)

In the following table, the Non-H and H(model) columns list the number of non-hydrogen atoms and hydrogen atoms in the chain respectively. The H(added) column lists the number of hydrogen

atoms added and optimized by MolProbity. The Clashes column lists the number of clashes within the asymmetric unit, whereas Symm-Clashes lists symmetry-related clashes.

Mol	Chain	Non-H	H(model)	H(added)	Clashes	Symm-Clashes
1	A	3487	0	3564	113	0
1	B	3487	0	3564	111	0
1	E	3487	0	3564	111	0
1	I	3487	0	3564	115	0
1	M	3487	0	3564	117	0
1	P	3487	0	3564	112	0
1	S	3487	0	3564	111	0
1	W	3487	0	3564	121	0
2	D	1740	0	1760	65	0
2	G	1740	0	1760	64	0
2	K	1740	0	1760	66	0
2	L	1740	0	1760	65	0
2	O	1740	0	1760	63	0
2	R	1740	0	1760	64	0
2	V	1740	0	1760	65	0
2	Y	1740	0	1760	65	0
All	All	41816	0	42592	1124	0

The all-atom clashscore is defined as the number of clashes found per 1000 atoms (including hydrogen atoms). The all-atom clashscore for this structure is 13.

The worst 5 of 1124 close contacts within the same asymmetric unit are listed below, sorted by their clash magnitude.

Atom-1	Atom-2	Interatomic distance (Å)	Clash overlap (Å)
1:W:324:PRO:CD	1:W:324:PRO:N	1.81	1.36
1:W:323:PRO:N	1:W:323:PRO:CD	1.73	1.34
1:W:323:PRO:C	1:W:324:PRO:CD	2.18	1.16
1:B:319:THR:O	1:B:319:THR:HG22	1.39	1.15
1:M:323:PRO:HB2	1:M:324:PRO:HD3	1.40	1.03

There are no symmetry-related clashes.

5.3 Torsion angles

5.3.1 Protein backbone

In the following table, the Percentiles column shows the percent Ramachandran outliers of the chain as a percentile score with respect to all PDB entries followed by that with respect to all EM entries.

The Analysed column shows the number of residues for which the backbone conformation was analysed, and the total number of residues.

Mol	Chain	Analysed	Favoured	Allowed	Outliers	Percentiles	
1	A	435/670 (65%)	413 (95%)	18 (4%)	4 (1%)	14	39
1	B	435/670 (65%)	410 (94%)	22 (5%)	3 (1%)	18	45
1	E	435/670 (65%)	411 (94%)	21 (5%)	3 (1%)	18	45
1	I	435/670 (65%)	410 (94%)	22 (5%)	3 (1%)	18	45
1	M	435/670 (65%)	411 (94%)	21 (5%)	3 (1%)	18	45
1	P	435/670 (65%)	412 (95%)	20 (5%)	3 (1%)	18	45
1	S	435/670 (65%)	411 (94%)	21 (5%)	3 (1%)	18	45
1	W	435/670 (65%)	407 (94%)	25 (6%)	3 (1%)	18	45
2	D	223/256 (87%)	203 (91%)	20 (9%)	0	100	100
2	G	223/256 (87%)	203 (91%)	20 (9%)	0	100	100
2	K	223/256 (87%)	203 (91%)	20 (9%)	0	100	100
2	L	223/256 (87%)	204 (92%)	19 (8%)	0	100	100
2	O	223/256 (87%)	203 (91%)	20 (9%)	0	100	100
2	R	223/256 (87%)	203 (91%)	20 (9%)	0	100	100
2	V	223/256 (87%)	203 (91%)	20 (9%)	0	100	100
2	Y	223/256 (87%)	203 (91%)	20 (9%)	0	100	100
All	All	5264/7408 (71%)	4910 (93%)	329 (6%)	25 (0%)	26	52

5 of 25 Ramachandran outliers are listed below:

Mol	Chain	Res	Type
1	A	60	PRO
1	A	61	ILE
1	A	322	ALA
1	B	60	PRO
1	B	61	ILE

5.3.2 Protein sidechains ⓘ

In the following table, the Percentiles column shows the percent sidechain outliers of the chain as a percentile score with respect to all PDB entries followed by that with respect to all EM entries.

The Analysed column shows the number of residues for which the sidechain conformation was analysed, and the total number of residues.

Mol	Chain	Analysed	Rotameric	Outliers	Percentiles	
1	A	379/575 (66%)	376 (99%)	3 (1%)	73	79
1	B	379/575 (66%)	375 (99%)	4 (1%)	65	76
1	E	379/575 (66%)	376 (99%)	3 (1%)	73	79
1	I	379/575 (66%)	375 (99%)	4 (1%)	65	76
1	M	379/575 (66%)	375 (99%)	4 (1%)	65	76
1	P	379/575 (66%)	376 (99%)	3 (1%)	73	79
1	S	379/575 (66%)	376 (99%)	3 (1%)	73	79
1	W	379/575 (66%)	372 (98%)	7 (2%)	51	70
2	D	185/208 (89%)	185 (100%)	0	100	100
2	G	185/208 (89%)	185 (100%)	0	100	100
2	K	185/208 (89%)	184 (100%)	1 (0%)	81	82
2	L	185/208 (89%)	185 (100%)	0	100	100
2	O	185/208 (89%)	185 (100%)	0	100	100
2	R	185/208 (89%)	185 (100%)	0	100	100
2	V	185/208 (89%)	185 (100%)	0	100	100
2	Y	185/208 (89%)	184 (100%)	1 (0%)	81	82
All	All	4512/6264 (72%)	4479 (99%)	33 (1%)	73	80

5 of 33 residues with a non-rotameric sidechain are listed below:

Mol	Chain	Res	Type
1	W	323	PRO
1	W	324	PRO
2	Y	121	ARG
1	I	341	ASP
1	I	319	THR

Sometimes sidechains can be flipped to improve hydrogen bonding and reduce clashes. 5 of 45 such sidechains are listed below:

Mol	Chain	Res	Type
2	O	159	GLN
2	R	236	GLN
2	O	236	GLN
1	P	277	GLN
2	V	106	GLN

5.3.3 RNA [i](#)

There are no RNA molecules in this entry.

5.4 Non-standard residues in protein, DNA, RNA chains [i](#)

There are no non-standard protein/DNA/RNA residues in this entry.

5.5 Carbohydrates [i](#)

There are no oligosaccharides in this entry.

5.6 Ligand geometry [i](#)

There are no ligands in this entry.

5.7 Other polymers [i](#)

There are no such residues in this entry.

5.8 Polymer linkage issues [i](#)

There are no chain breaks in this entry.

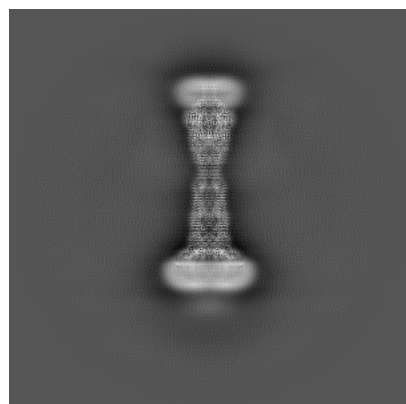
6 Map visualisation [i](#)

This section contains visualisations of the EMDB entry EMD-64802. These allow visual inspection of the internal detail of the map and identification of artifacts.

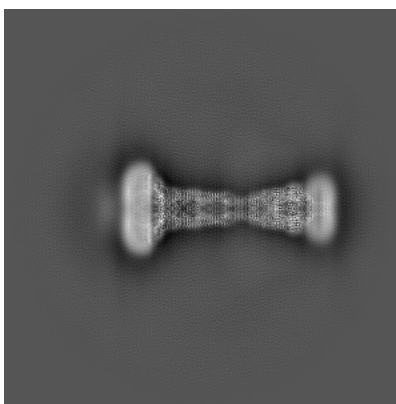
Images derived from a raw map, generated by summing the deposited half-maps, are presented below the corresponding image components of the primary map to allow further visual inspection and comparison with those of the primary map.

6.1 Orthogonal projections [i](#)

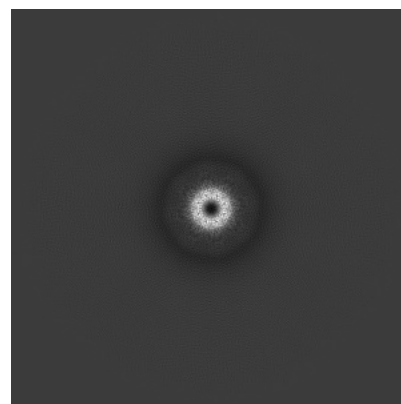
6.1.1 Primary map



X

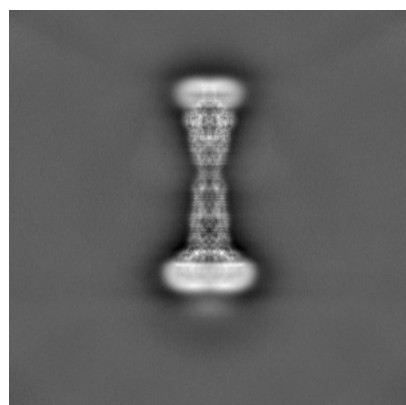


Y

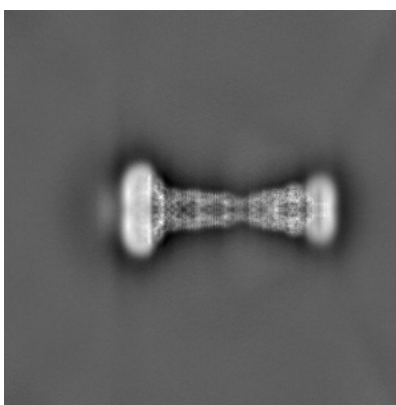


Z

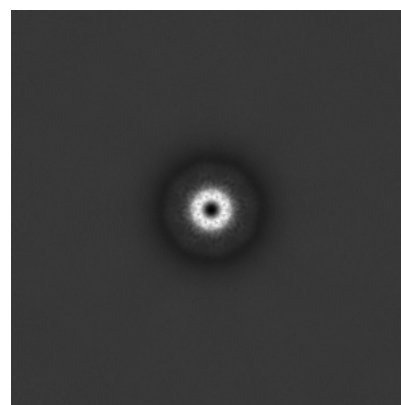
6.1.2 Raw map



X



Y

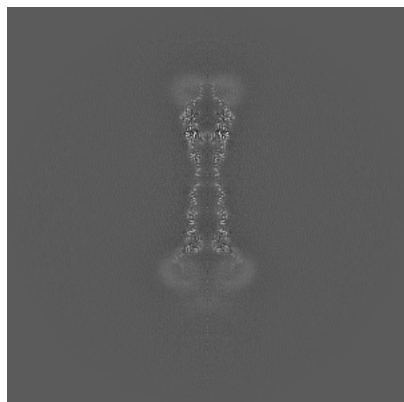


Z

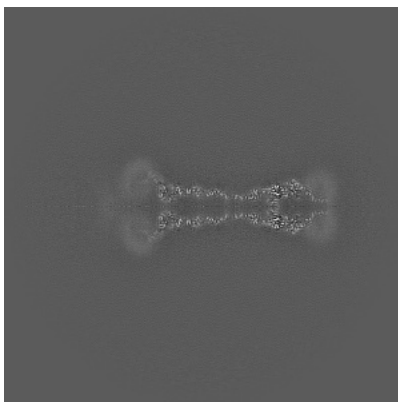
The images above show the map projected in three orthogonal directions.

6.2 Central slices [i](#)

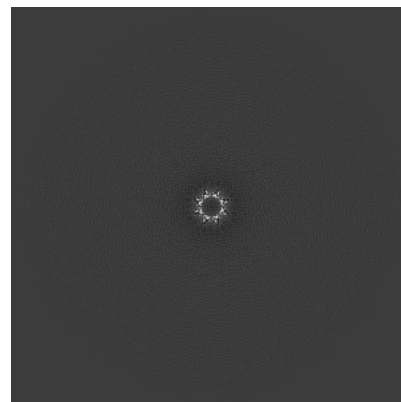
6.2.1 Primary map



X Index: 320

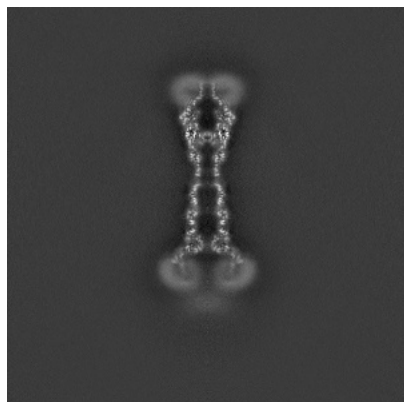


Y Index: 320

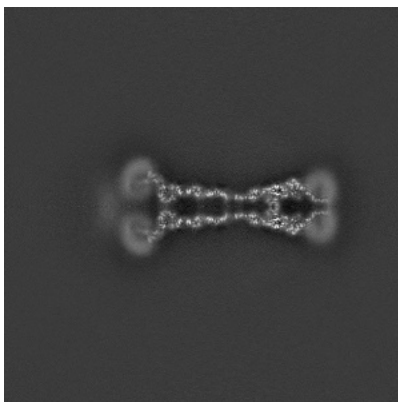


Z Index: 320

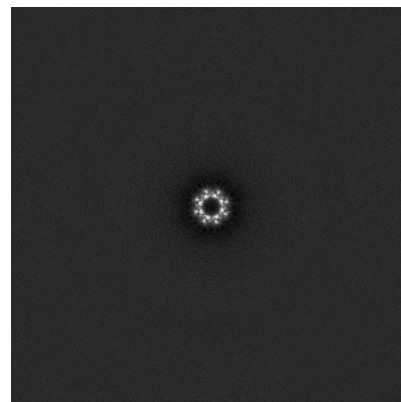
6.2.2 Raw map



X Index: 320



Y Index: 320

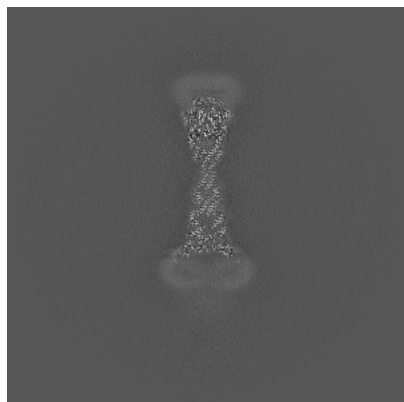


Z Index: 320

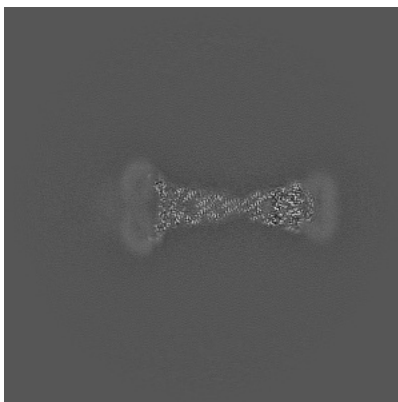
The images above show central slices of the map in three orthogonal directions.

6.3 Largest variance slices [i](#)

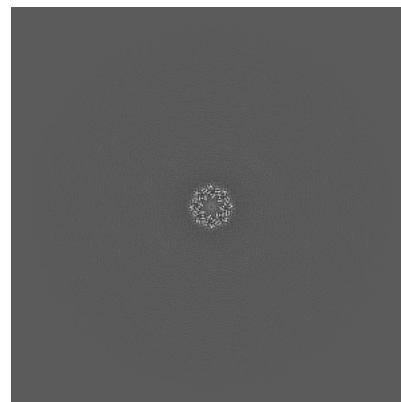
6.3.1 Primary map



X Index: 337

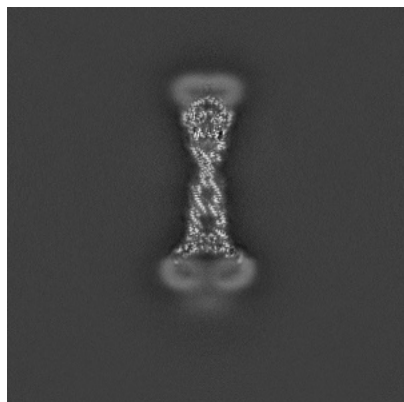


Y Index: 303

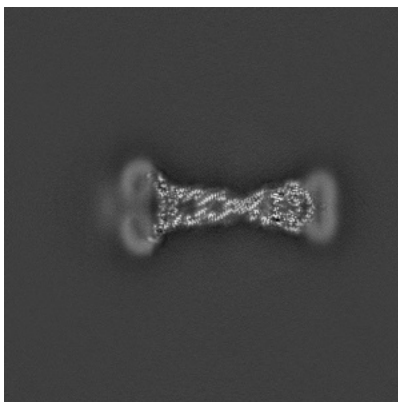


Z Index: 438

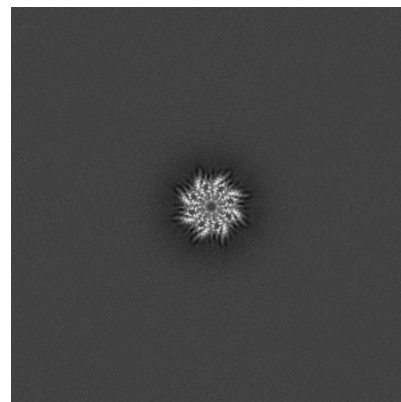
6.3.2 Raw map



X Index: 305



Y Index: 305

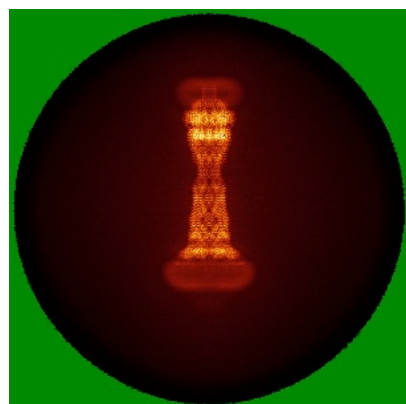


Z Index: 252

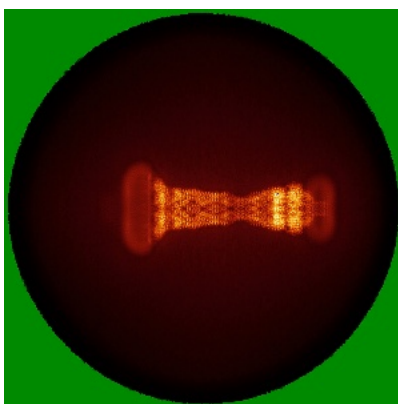
The images above show the largest variance slices of the map in three orthogonal directions.

6.4 Orthogonal standard-deviation projections (False-color) [i](#)

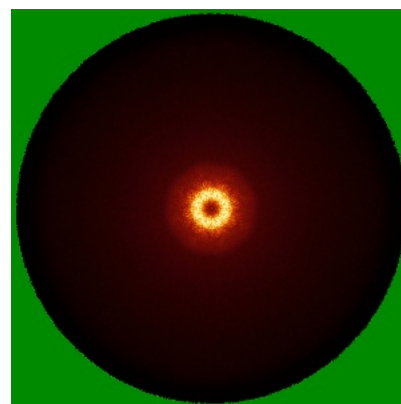
6.4.1 Primary map



X

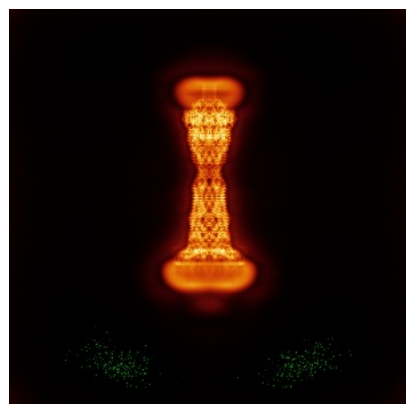


Y

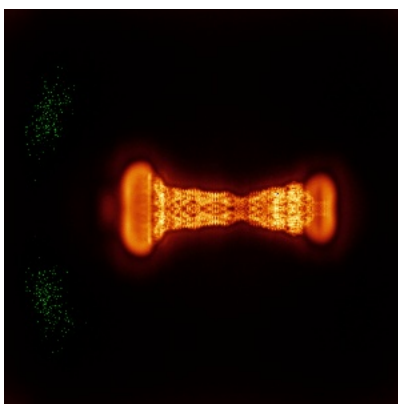


Z

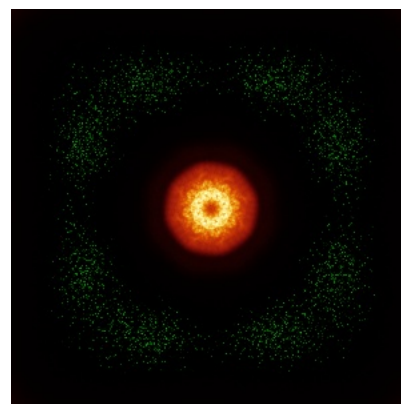
6.4.2 Raw map



X



Y



Z

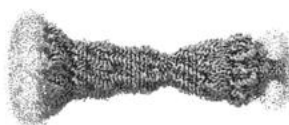
The images above show the map standard deviation projections with false color in three orthogonal directions. Minimum values are shown in green, max in blue, and dark to light orange shades represent small to large values respectively.

6.5 Orthogonal surface views [i](#)

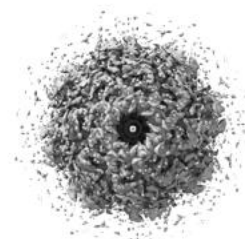
6.5.1 Primary map



X



Y



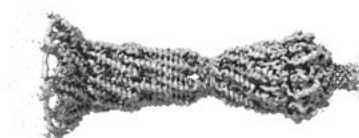
Z

The images above show the 3D surface view of the map at the recommended contour level 0.433. These images, in conjunction with the slice images, may facilitate assessment of whether an appropriate contour level has been provided.

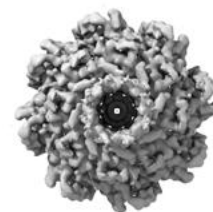
6.5.2 Raw map



X



Y



Z

These images show the 3D surface of the raw map. The raw map's contour level was selected so that its surface encloses the same volume as the primary map does at its recommended contour level.

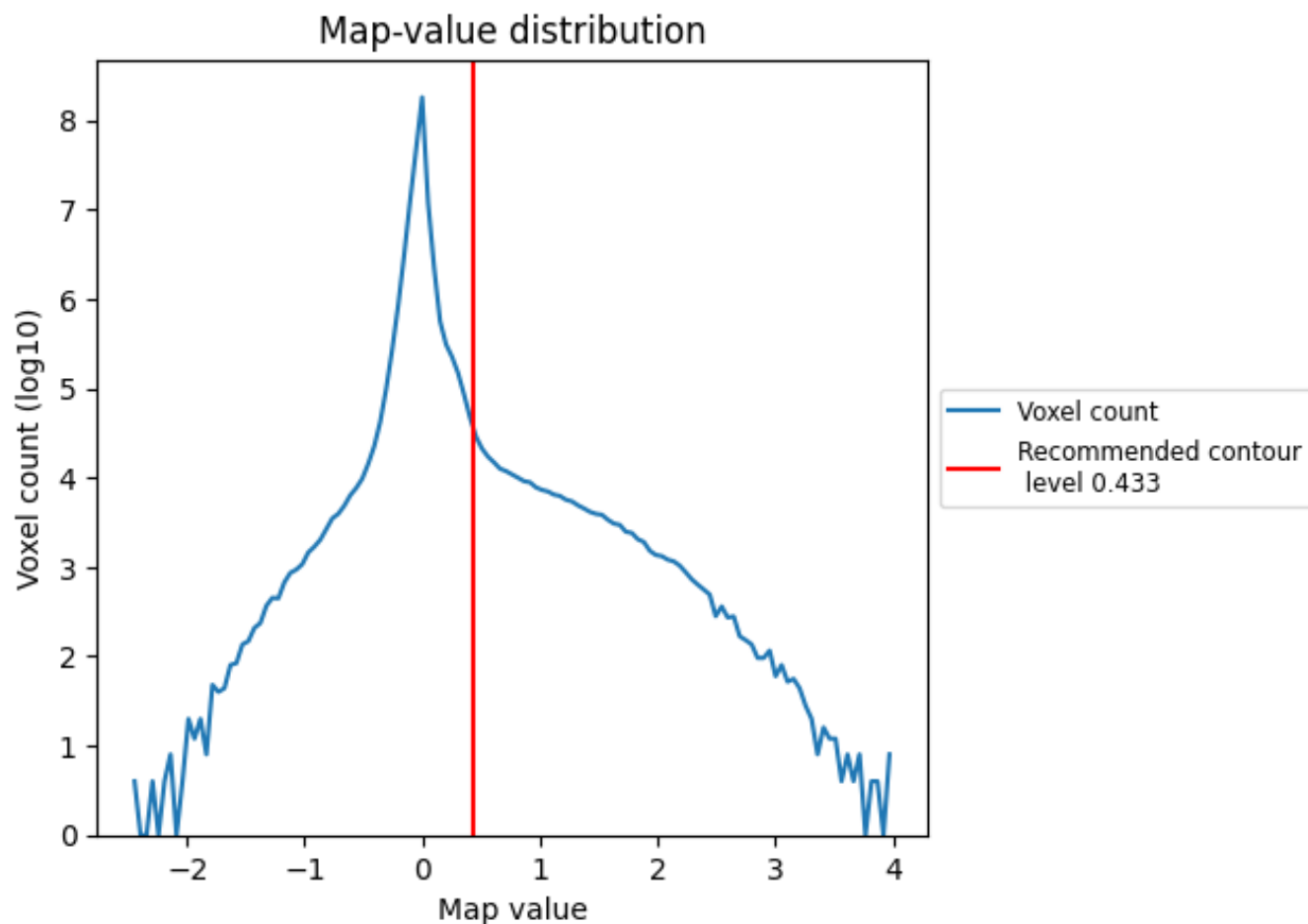
6.6 Mask visualisation [i](#)

This section was not generated. No masks/segmentation were deposited.

7 Map analysis [i](#)

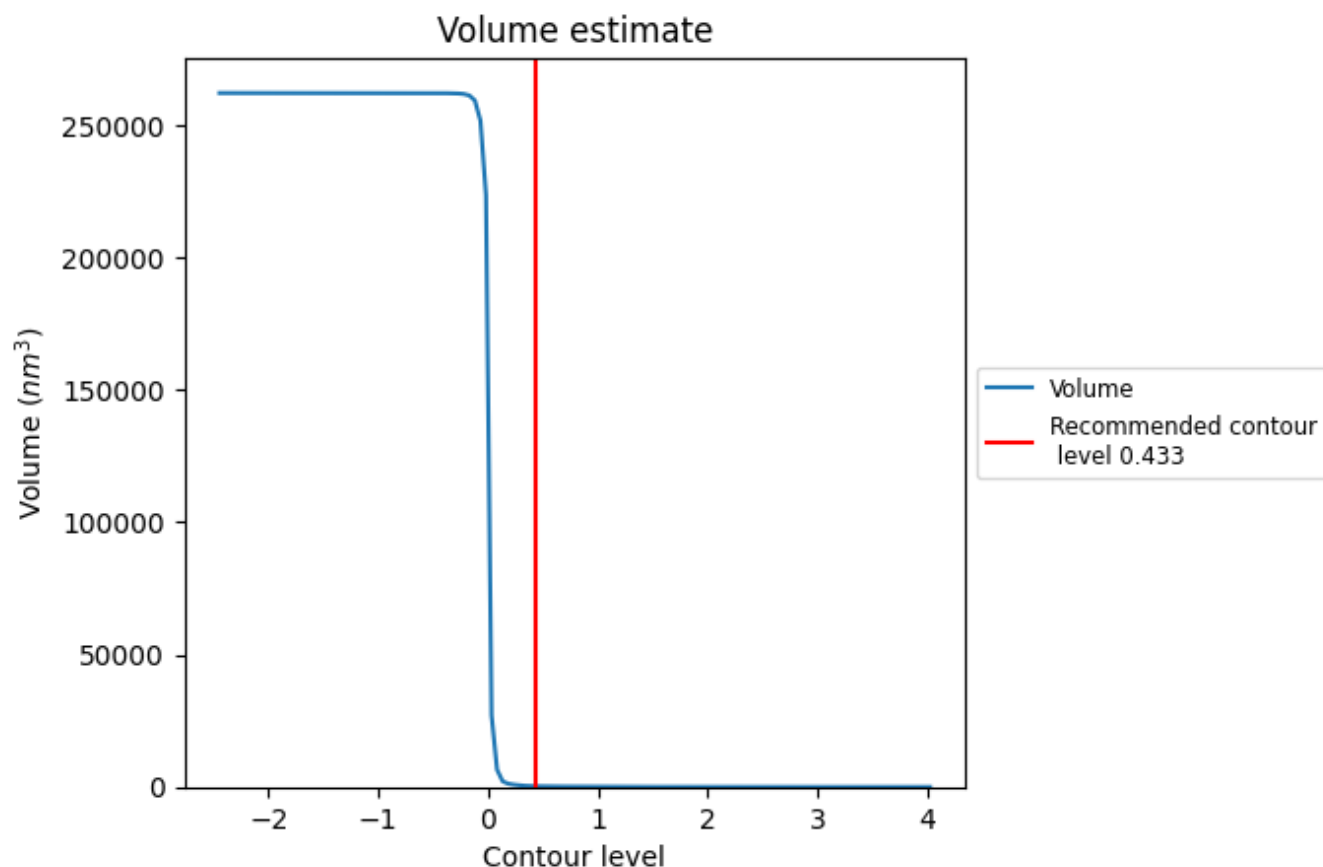
This section contains the results of statistical analysis of the map.

7.1 Map-value distribution [i](#)



The map-value distribution is plotted in 128 intervals along the x-axis. The y-axis is logarithmic. A spike in this graph at zero usually indicates that the volume has been masked.

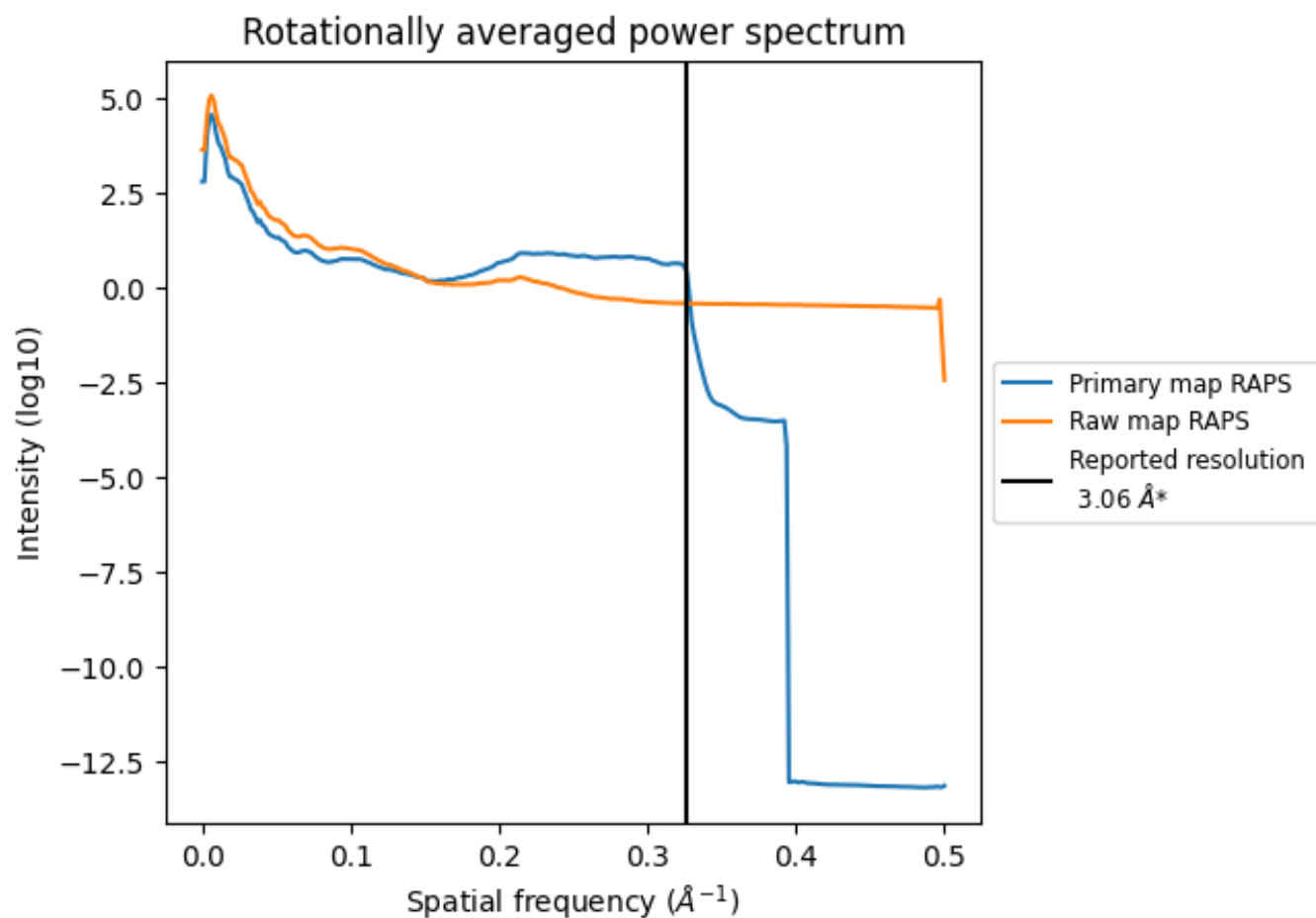
7.2 Volume estimate [i](#)



The volume at the recommended contour level is 263 nm^3 ; this corresponds to an approximate mass of 238 kDa.

The volume estimate graph shows how the enclosed volume varies with the contour level. The recommended contour level is shown as a vertical line and the intersection between the line and the curve gives the volume of the enclosed surface at the given level.

7.3 Rotationally averaged power spectrum ⓘ

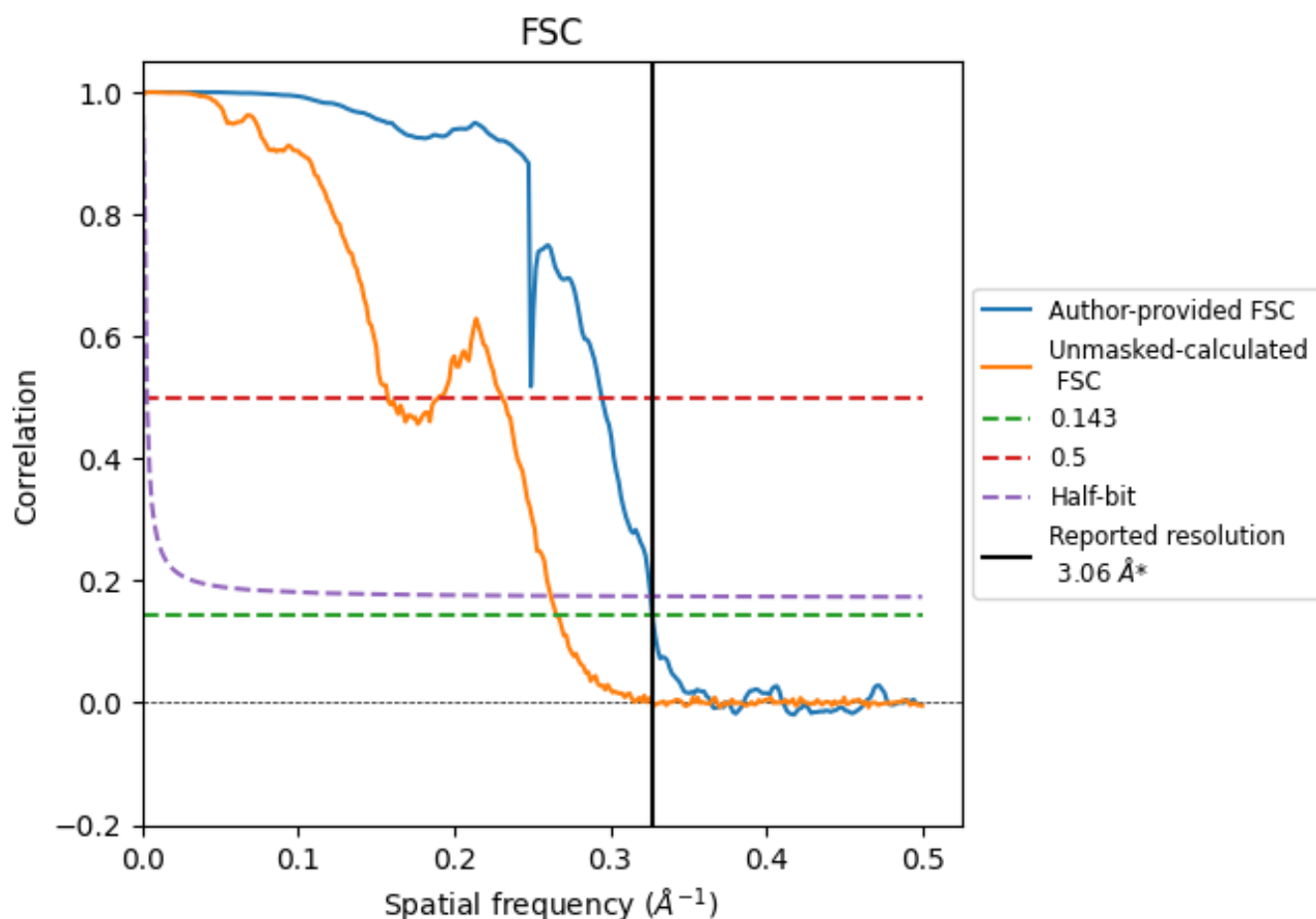


*Reported resolution corresponds to spatial frequency of 0.327 Å⁻¹

8 Fourier-Shell correlation [i](#)

Fourier-Shell Correlation (FSC) is the most commonly used method to estimate the resolution of single-particle and subtomogram-averaged maps. The shape of the curve depends on the imposed symmetry, mask and whether or not the two 3D reconstructions used were processed from a common reference. The reported resolution is shown as a black line. A curve is displayed for the half-bit criterion in addition to lines showing the 0.143 gold standard cut-off and 0.5 cut-off.

8.1 FSC [i](#)



*Reported resolution corresponds to spatial frequency of 0.327 \AA^{-1}

8.2 Resolution estimates

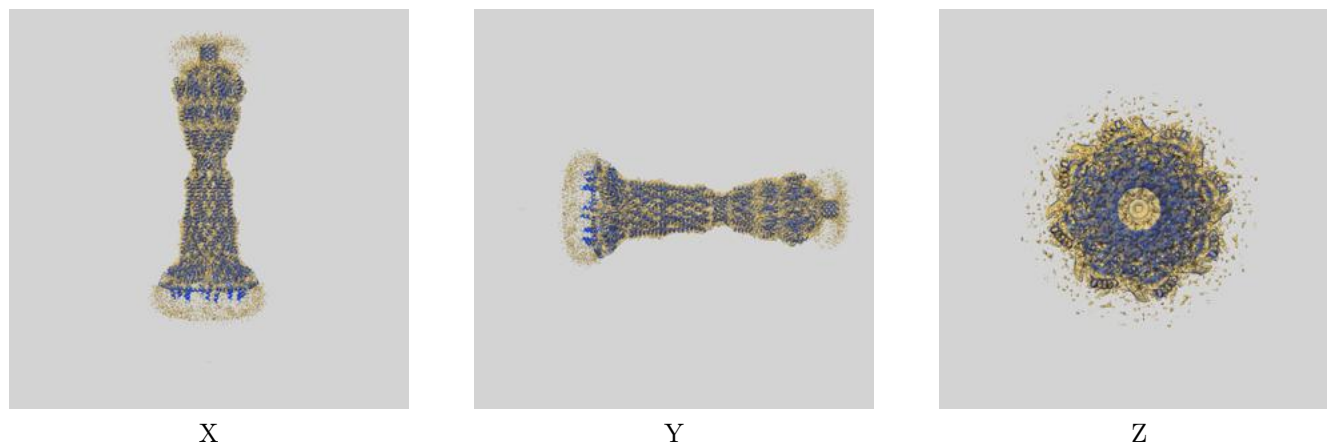
Resolution estimate (Å)	Estimation criterion (FSC cut-off)		
	0.143	0.5	Half-bit
Reported by author	3.06	-	-
Author-provided FSC curve	3.06	3.39	3.07
Unmasked-calculated*	3.77	6.35	3.82

*Resolution estimate based on FSC curve calculated by comparison of deposited half-maps. The value from deposited half-maps intersecting FSC 0.143 CUT-OFF 3.77 differs from the reported value 3.06 by more than 10 %

9 Map-model fit [i](#)

This section contains information regarding the fit between EMDB map EMD-64802 and PDB model 9V6L. Per-residue inclusion information can be found in section [3](#) on page [7](#).

9.1 Map-model overlay [i](#)



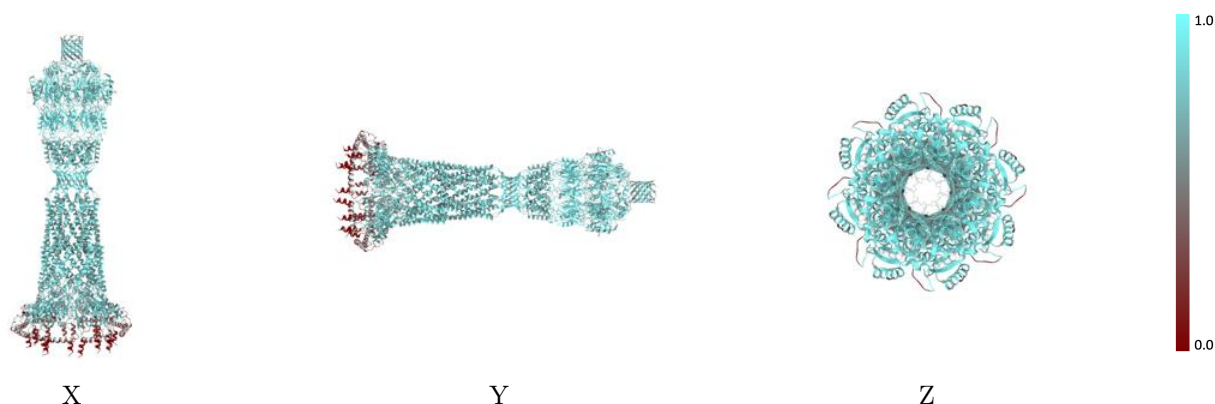
The images above show the 3D surface view of the map at the recommended contour level 0.433 at 50% transparency in yellow overlaid with a ribbon representation of the model coloured in blue. These images allow for the visual assessment of the quality of fit between the atomic model and the map.

9.2 Q-score mapped to coordinate model [i](#)



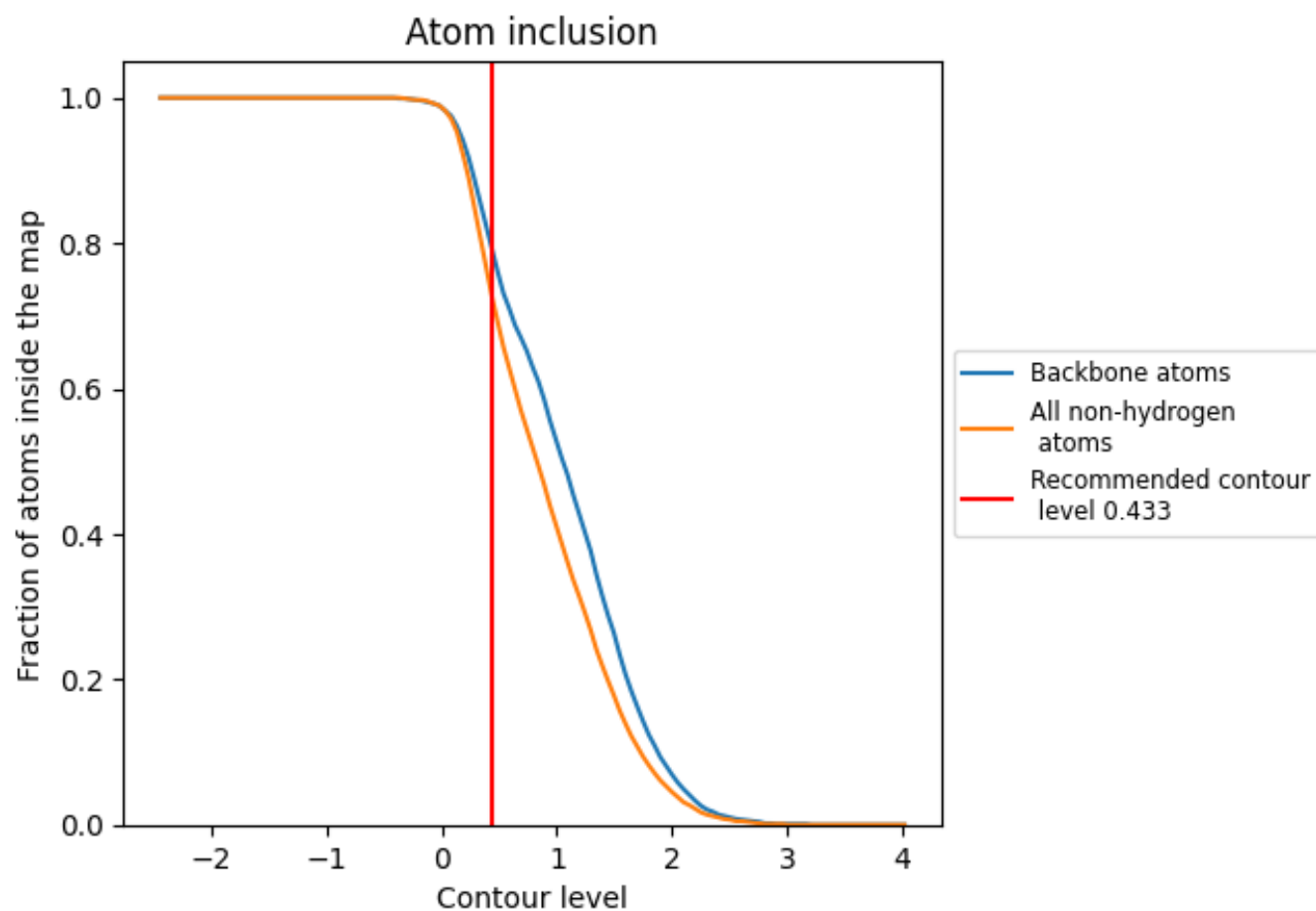
The images above show the model with each residue coloured according its Q-score. This shows their resolvability in the map with higher Q-score values reflecting better resolvability. Please note: Q-score is calculating the resolvability of atoms, and thus high values are only expected at resolutions at which atoms can be resolved. Low Q-score values may therefore be expected for many entries.

9.3 Atom inclusion mapped to coordinate model [i](#)



The images above show the model with each residue coloured according to its atom inclusion. This shows to what extent they are inside the map at the recommended contour level (0.433).



































9.4 Atom inclusion [i](#)



At the recommended contour level, 79% of all backbone atoms, 73% of all non-hydrogen atoms, are inside the map.

9.5 Map-model fit summary

The table lists the average atom inclusion at the recommended contour level (0.433) and Q-score for the entire model and for each chain.

Chain	Atom inclusion	Q-score
All	 0.7280	 0.4570
A	 0.6800	 0.4360
B	 0.6790	 0.4340
D	 0.8260	 0.5010
E	 0.6790	 0.4350
G	 0.8260	 0.5040
I	 0.6770	 0.4330
K	 0.8260	 0.5010
L	 0.8270	 0.5020
M	 0.6790	 0.4350
O	 0.8260	 0.5020
P	 0.6790	 0.4350
R	 0.8270	 0.5000
S	 0.6790	 0.4360
V	 0.8260	 0.5010
W	 0.6820	 0.4380
Y	 0.8260	 0.5000

