



Full wwPDB X-ray Structure Validation Report ⓘ

Dec 6, 2023 – 04:19 am GMT

PDB ID : 2V5Y
Title : Crystal structure of the receptor protein tyrosine phosphatase mu ectodomain
Authors : Aricescu, A.R.; Siebold, C.; Choudhuri, K.; Chang, V.T.; Lu, W.; Davis, S.J.;
van der Merwe, P.A.; Jones, E.Y.
Deposited on : 2007-07-11
Resolution : 3.10 Å(reported)

This is a Full wwPDB X-ray Structure Validation Report for a publicly released PDB entry.

We welcome your comments at validation@mail.wwpdb.org

A user guide is available at

<https://www.wwpdb.org/validation/2017/XrayValidationReportHelp>

with specific help available everywhere you see the ⓘ symbol.

The types of validation reports are described at

<http://www.wwpdb.org/validation/2017/FAQs#types>.

The following versions of software and data (see [references ⓘ](#)) were used in the production of this report:

MolProbity : 4.02b-467
Mogul : 1.8.4, CSD as541be (2020)
Xtriage (Phenix) : 1.13
EDS : 2.36
Percentile statistics : 20191225.v01 (using entries in the PDB archive December 25th 2019)
Refmac : 5.8.0158
CCP4 : 7.0.044 (Gargrove)
Ideal geometry (proteins) : Engh & Huber (2001)
Ideal geometry (DNA, RNA) : Parkinson et al. (1996)
Validation Pipeline (wwPDB-VP) : 2.36

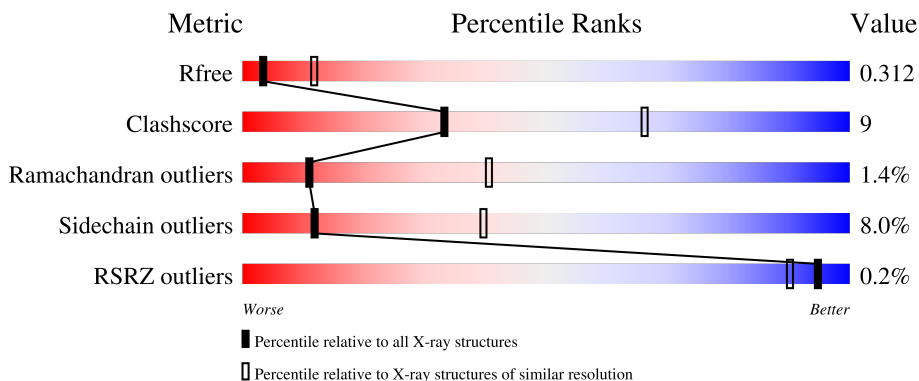
1 Overall quality at a glance

The following experimental techniques were used to determine the structure:

X-RAY DIFFRACTION

The reported resolution of this entry is 3.10 Å.

Percentile scores (ranging between 0-100) for global validation metrics of the entry are shown in the following graphic. The table shows the number of entries on which the scores are based.



Metric	Whole archive (#Entries)	Similar resolution (#Entries, resolution range(Å))
R_{free}	130704	1094 (3.10-3.10)
Clashscore	141614	1184 (3.10-3.10)
Ramachandran outliers	138981	1141 (3.10-3.10)
Sidechain outliers	138945	1141 (3.10-3.10)
RSRZ outliers	127900	1067 (3.10-3.10)

The table below summarises the geometric issues observed across the polymeric chains and their fit to the electron density. The red, orange, yellow and green segments of the lower bar indicate the fraction of residues that contain outliers for ≥ 3 , 2, 1 and 0 types of geometric quality criteria respectively. A grey segment represents the fraction of residues that are not modelled. The numeric value for each fraction is indicated below the corresponding segment, with a dot representing fractions $\leq 5\%$. The upper red bar (where present) indicates the fraction of residues that have poor fit to the electron density. The numeric value is given above the bar.

Mol	Chain	Length	Quality of chain
1	A	731	 58% 17% 0.5% 23%

2 Entry composition [i](#)

There are 3 unique types of molecules in this entry. The entry contains 4523 atoms, of which 0 are hydrogens and 0 are deuteriums.

In the tables below, the ZeroOcc column contains the number of atoms modelled with zero occupancy, the AltConf column contains the number of residues with at least one atom in alternate conformation and the Trace column contains the number of residues modelled with at most 2 atoms.

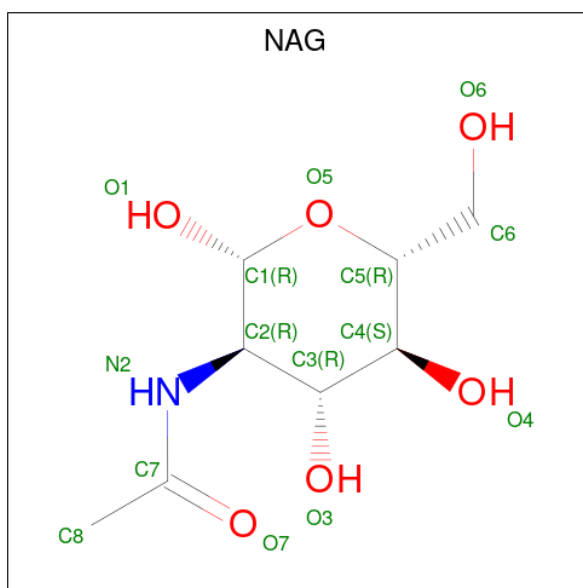
- Molecule 1 is a protein called RECEPTOR-TYPE TYROSINE-PROTEIN PHOSPHATASE MU.

Mol	Chain	Residues	Atoms					ZeroOcc	AltConf	Trace
			Total	C	N	O	S			
1	A	564	4423	2795	762	850	16	0	0	0

There is a discrepancy between the modelled and reference sequences:

Chain	Residue	Modelled	Actual	Comment	Reference
A	48	PHE	LEU	conflict	UNP P28827

- Molecule 2 is 2-acetamido-2-deoxy-beta-D-glucopyranose (three-letter code: NAG) (formula: C₈H₁₅NO₆).



Mol	Chain	Residues	Atoms				ZeroOcc	AltConf
			Total	C	N	O		
2	A	1	14	8	1	5	0	0
2	A	1	14	8	1	5	0	0

Continued on next page...

Continued from previous page...

Mol	Chain	Residues	Atoms				ZeroOcc	AltConf
2	A	1	Total	C	N	O	0	0
			14	8	1	5		
2	A	1	Total	C	N	O	0	0
			14	8	1	5		
2	A	1	Total	C	N	O	0	0
			14	8	1	5		
2	A	1	Total	C	N	O	0	0
			14	8	1	5		
2	A	1	Total	C	N	O	0	0
			14	8	1	5		

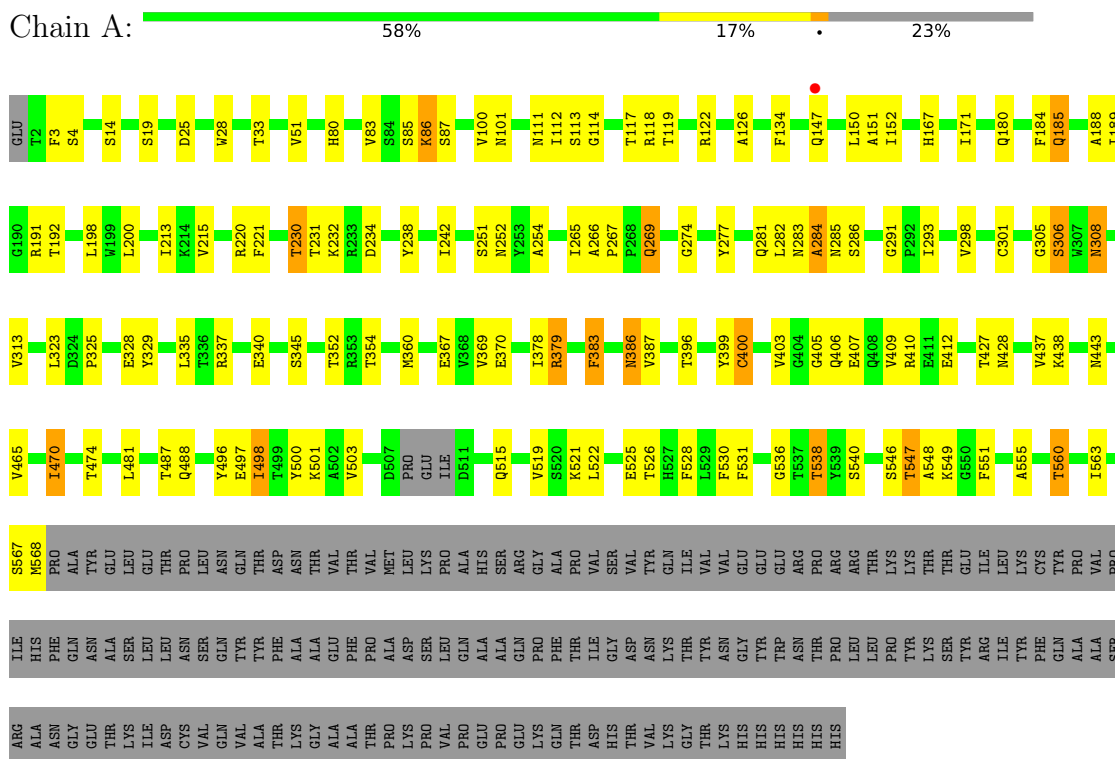
- Molecule 3 is SODIUM ION (three-letter code: NA) (formula: Na).

Mol	Chain	Residues	Atoms		ZeroOcc	AltConf
3	A	2	Total	Na	0	0
			2	2		

3 Residue-property plots

These plots are drawn for all protein, RNA, DNA and oligosaccharide chains in the entry. The first graphic for a chain summarises the proportions of the various outlier classes displayed in the second graphic. The second graphic shows the sequence view annotated by issues in geometry and electron density. Residues are color-coded according to the number of geometric quality criteria for which they contain at least one outlier: green = 0, yellow = 1, orange = 2 and red = 3 or more. A red dot above a residue indicates a poor fit to the electron density ($RSRZ > 2$). Stretches of 2 or more consecutive residues without any outlier are shown as a green connector. Residues present in the sample, but not in the model, are shown in grey.

• Molecule 1: RECEPTOR-TYPE TYROSINE-PROTEIN PHOSPHATASE MU



4 Data and refinement statistics

Property	Value	Source
Space group	C 1 2 1	Depositor
Cell constants a, b, c, α , β , γ	167.34Å 69.33Å 97.49Å 90.00° 113.52° 90.00°	Depositor
Resolution (Å)	20.00 – 3.10 29.80 – 2.99	Depositor EDS
% Data completeness (in resolution range)	100.0 (20.00-3.10) 99.1 (29.80-2.99)	Depositor EDS
R_{merge}	0.16	Depositor
R_{sym}	(Not available)	Depositor
$\langle I/\sigma(I) \rangle$ ¹	1.93 (at 3.00Å)	Xtrriage
Refinement program	REFMAC 5.2.0019	Depositor
R, R_{free}	0.242 , 0.320 0.244 , 0.312	Depositor DCC
R_{free} test set	1069 reflections (5.12%)	wwPDB-VP
Wilson B-factor (Å ²)	49.4	Xtrriage
Anisotropy	0.920	Xtrriage
Bulk solvent k_{sol} (e/Å ³), B_{sol} (Å ²)	0.32 , 30.2	EDS
L-test for twinning ²	$\langle L \rangle = 0.50$, $\langle L^2 \rangle = 0.33$	Xtrriage
Estimated twinning fraction	No twinning to report.	Xtrriage
F_o, F_c correlation	0.88	EDS
Total number of atoms	4523	wwPDB-VP
Average B, all atoms (Å ²)	31.0	wwPDB-VP

Xtrriage's analysis on translational NCS is as follows: *The largest off-origin peak in the Patterson function is 4.51% of the height of the origin peak. No significant pseudotranslation is detected.*

¹Intensities estimated from amplitudes.

²Theoretical values of $\langle |L| \rangle$, $\langle L^2 \rangle$ for acentric reflections are 0.5, 0.333 respectively for untwinned datasets, and 0.375, 0.2 for perfectly twinned datasets.

5 Model quality [i](#)

5.1 Standard geometry [i](#)

Bond lengths and bond angles in the following residue types are not validated in this section: NA, NAG

The Z score for a bond length (or angle) is the number of standard deviations the observed value is removed from the expected value. A bond length (or angle) with $|Z| > 5$ is considered an outlier worth inspection. RMSZ is the root-mean-square of all Z scores of the bond lengths (or angles).

Mol	Chain	Bond lengths		Bond angles	
		RMSZ	# Z >5	RMSZ	# Z >5
1	A	0.39	0/4540	0.60	0/6188

Chiral center outliers are detected by calculating the chiral volume of a chiral center and verifying if the center is modelled as a planar moiety or with the opposite hand. A planarity outlier is detected by checking planarity of atoms in a peptide group, atoms in a mainchain group or atoms of a sidechain that are expected to be planar.

Mol	Chain	#Chirality outliers	#Planarity outliers
1	A	0	1

There are no bond length outliers.

There are no bond angle outliers.

There are no chirality outliers.

All (1) planarity outliers are listed below:

Mol	Chain	Res	Type	Group
1	A	530	PHE	Peptide

5.2 Too-close contacts [i](#)

In the following table, the Non-H and H(model) columns list the number of non-hydrogen atoms and hydrogen atoms in the chain respectively. The H(added) column lists the number of hydrogen atoms added and optimized by MolProbity. The Clashes column lists the number of clashes within the asymmetric unit, whereas Symm-Clashes lists symmetry-related clashes.

Mol	Chain	Non-H	H(model)	H(added)	Clashes	Symm-Clashes
1	A	4423	0	4261	76	0
2	A	98	0	91	3	0

Continued on next page...

Continued from previous page...

Mol	Chain	Non-H	H(model)	H(added)	Clashes	Symm-Clashes
3	A	2	0	0	0	0
All	All	4523	0	4352	76	0

The all-atom clashscore is defined as the number of clashes found per 1000 atoms (including hydrogen atoms). The all-atom clashscore for this structure is 9.

All (76) close contacts within the same asymmetric unit are listed below, sorted by their clash magnitude.

Atom-1	Atom-2	Interatomic distance (Å)	Clash overlap (Å)
1:A:282:LEU:HD11	1:A:313:VAL:HG21	1.54	0.89
1:A:112:ILE:HD12	1:A:114:GLY:HA3	1.57	0.87
1:A:519:VAL:HG21	1:A:528:PHE:CZ	2.14	0.81
1:A:396:THR:HG23	1:A:412:GLU:O	1.90	0.71
1:A:83:VAL:HG22	1:A:150:LEU:HD23	1.71	0.71
1:A:547:THR:HG22	1:A:549:LYS:H	1.60	0.66
1:A:192:THR:HG21	1:A:213:ILE:HD11	1.78	0.65
1:A:481:LEU:HD23	1:A:498:ILE:CD1	2.27	0.65
1:A:567:SER:HA	1:A:568:MET:HG2	1.79	0.63
1:A:265:ILE:HD12	1:A:286:SER:HB3	1.82	0.62
1:A:522:LEU:HD23	2:A:1575:NAG:H5	1.83	0.61
1:A:117:THR:O	1:A:119:THR:HG23	2.01	0.59
1:A:80:HIS:CE1	1:A:122:ARG:HG3	2.37	0.59
1:A:282:LEU:HD11	1:A:313:VAL:CG2	2.31	0.57
1:A:282:LEU:HD11	1:A:313:VAL:HG11	1.88	0.56
1:A:400:CYS:SG	1:A:409:VAL:HG22	2.45	0.56
1:A:85:SER:HA	1:A:86:LYS:CB	2.37	0.54
1:A:200:LEU:HD11	1:A:238:TYR:HB3	1.89	0.54
1:A:465:VAL:O	1:A:555:ALA:HB2	2.08	0.54
1:A:283:ASN:O	1:A:285:ASN:N	2.42	0.53
1:A:399:TYR:CE1	1:A:410:ARG:HB2	2.45	0.52
1:A:481:LEU:CD2	1:A:498:ILE:CD1	2.87	0.52
1:A:323:LEU:HD22	1:A:329:TYR:CZ	2.45	0.51
1:A:536:GLY:HA2	1:A:563:ILE:HG22	1.92	0.51
1:A:151:ALA:O	1:A:152:ILE:HD12	2.10	0.51
1:A:231:THR:HG22	1:A:232:LYS:H	1.76	0.50
1:A:525:GLU:HB3	2:A:1575:NAG:H82	1.91	0.50
1:A:378:ILE:HD13	1:A:437:VAL:HG11	1.94	0.50
1:A:274:GLY:HA3	1:A:277:TYR:CE2	2.46	0.50
1:A:180:GLN:HE21	1:A:340:GLU:HG3	1.76	0.49
1:A:269:GLN:HB2	1:A:281:GLN:HB3	1.92	0.49
1:A:538:THR:HG22	1:A:560:THR:HB	1.94	0.49

Continued on next page...

Continued from previous page...

Atom-1	Atom-2	Interatomic distance (Å)	Clash overlap (Å)
1:A:481:LEU:CD2	1:A:498:ILE:HD11	2.42	0.48
1:A:282:LEU:CD1	1:A:313:VAL:HG21	2.36	0.48
1:A:85:SER:HA	1:A:86:LYS:HB3	1.95	0.47
1:A:86:LYS:HG2	1:A:147:GLN:O	2.14	0.47
1:A:101:ASN:HA	1:A:134:PHE:CE2	2.50	0.47
1:A:198:LEU:HD11	1:A:242:ILE:HD12	1.95	0.47
1:A:546:SER:HB2	1:A:551:PHE:CD2	2.50	0.47
1:A:386:ASN:OD1	1:A:386:ASN:N	2.47	0.47
1:A:282:LEU:HD21	1:A:298:VAL:HG22	1.97	0.47
1:A:266:ALA:HB1	1:A:267:PRO:HD2	1.96	0.47
1:A:167:HIS:HB2	1:A:189:ILE:HG23	1.96	0.46
1:A:113:SER:N	1:A:114:GLY:HA2	2.29	0.46
1:A:547:THR:CG2	1:A:548:ALA:N	2.78	0.46
1:A:291:GLY:HA3	1:A:337:ARG:HE	1.81	0.46
1:A:470:ILE:HD11	1:A:555:ALA:CB	2.46	0.46
1:A:284:ALA:HB1	1:A:335:LEU:HD21	1.98	0.46
1:A:111:ASN:ND2	2:A:1571:NAG:H83	2.32	0.45
1:A:536:GLY:CA	1:A:563:ILE:HG22	2.47	0.45
1:A:301:CYS:HB3	1:A:308:ASN:HB2	1.99	0.45
1:A:85:SER:CA	1:A:86:LYS:CB	2.95	0.45
1:A:521:LYS:HD3	1:A:525:GLU:HG3	1.98	0.45
1:A:369:VAL:HG22	1:A:379:ARG:HG2	1.97	0.44
1:A:383:PHE:HB2	1:A:387:VAL:HB	1.99	0.44
1:A:367:GLU:HB2	1:A:379:ARG:HD2	2.00	0.44
1:A:427:THR:HG22	1:A:428:ASN:H	1.82	0.43
1:A:538:THR:CB	1:A:560:THR:HB	2.48	0.43
1:A:171:ILE:HD13	1:A:185:GLN:O	2.19	0.43
1:A:171:ILE:HG23	1:A:254:ALA:HB2	1.99	0.43
1:A:126:ALA:HB1	1:A:167:HIS:CE1	2.53	0.42
1:A:282:LEU:HD21	1:A:298:VAL:CG2	2.49	0.42
1:A:85:SER:CA	1:A:86:LYS:HB3	2.49	0.42
1:A:293:ILE:HD12	1:A:293:ILE:N	2.34	0.42
1:A:28:TRP:CE3	1:A:51:VAL:HG23	2.54	0.42
1:A:230:THR:HA	1:A:234:ASP:OD1	2.20	0.41
1:A:305:GLY:O	1:A:306:SER:C	2.58	0.41
1:A:496:TYR:CE1	1:A:526:THR:HG22	2.55	0.41
1:A:188:ALA:HB3	1:A:221:PHE:CE2	2.55	0.41
1:A:474:THR:HG21	1:A:560:THR:O	2.21	0.41
1:A:538:THR:HB	1:A:560:THR:HB	2.02	0.41
1:A:298:VAL:HG23	1:A:313:VAL:CG1	2.51	0.41
1:A:251:SER:OG	1:A:252:ASN:O	2.36	0.41

Continued on next page...

Continued from previous page...

Atom-1	Atom-2	Interatomic distance (Å)	Clash overlap (Å)
1:A:443:ASN:OD1	1:A:443:ASN:C	2.59	0.41
1:A:500:TYR:HA	1:A:540:SER:O	2.21	0.40
1:A:184:PHE:CD2	1:A:200:LEU:HD21	2.57	0.40

There are no symmetry-related clashes.

5.3 Torsion angles [i](#)

5.3.1 Protein backbone [i](#)

In the following table, the Percentiles column shows the percent Ramachandran outliers of the chain as a percentile score with respect to all X-ray entries followed by that with respect to entries of similar resolution.

The Analysed column shows the number of residues for which the backbone conformation was analysed, and the total number of residues.

Mol	Chain	Analysed	Favoured	Allowed	Outliers	Percentiles
1	A	560/731 (77%)	510 (91%)	42 (8%)	8 (1%)	11 40

All (8) Ramachandran outliers are listed below:

Mol	Chain	Res	Type
1	A	86	LYS
1	A	87	SER
1	A	284	ALA
1	A	306	SER
1	A	325	PRO
1	A	403	VAL
1	A	470	ILE
1	A	405	GLY

5.3.2 Protein sidechains [i](#)

In the following table, the Percentiles column shows the percent sidechain outliers of the chain as a percentile score with respect to all X-ray entries followed by that with respect to entries of similar resolution.

The Analysed column shows the number of residues for which the sidechain conformation was analysed, and the total number of residues.

Mol	Chain	Analysed	Rotameric	Outliers	Percentiles
1	A	490/637 (77%)	451 (92%)	39 (8%)	12 40

All (39) residues with a non-rotameric sidechain are listed below:

Mol	Chain	Res	Type
1	A	3	PHE
1	A	4	SER
1	A	14	SER
1	A	19	SER
1	A	25	ASP
1	A	33	THR
1	A	100	VAL
1	A	118	ARG
1	A	185	GLN
1	A	191	ARG
1	A	215	VAL
1	A	220	ARG
1	A	230	THR
1	A	269	GLN
1	A	308	ASN
1	A	328	GLU
1	A	345	SER
1	A	352	THR
1	A	354	THR
1	A	360	MET
1	A	370	GLU
1	A	379	ARG
1	A	383	PHE
1	A	386	ASN
1	A	400	CYS
1	A	406	GLN
1	A	407	GLU
1	A	438	LYS
1	A	487	THR
1	A	488	GLN
1	A	497	GLU
1	A	498	ILE
1	A	501	LYS
1	A	503	VAL
1	A	515	GLN
1	A	531	PHE
1	A	538	THR
1	A	547	THR

Continued on next page...

Continued from previous page...

Mol	Chain	Res	Type
1	A	560	THR

Sometimes sidechains can be flipped to improve hydrogen bonding and reduce clashes. All (3) such sidechains are listed below:

Mol	Chain	Res	Type
1	A	147	GLN
1	A	269	GLN
1	A	406	GLN

5.3.3 RNA [i](#)

There are no RNA molecules in this entry.

5.4 Non-standard residues in protein, DNA, RNA chains [i](#)

There are no non-standard protein/DNA/RNA residues in this entry.

5.5 Carbohydrates [i](#)

There are no monosaccharides in this entry.

5.6 Ligand geometry [i](#)

Of 9 ligands modelled in this entry, 2 are monoatomic - leaving 7 for Mogul analysis.

In the following table, the Counts columns list the number of bonds (or angles) for which Mogul statistics could be retrieved, the number of bonds (or angles) that are observed in the model and the number of bonds (or angles) that are defined in the Chemical Component Dictionary. The Link column lists molecule types, if any, to which the group is linked. The Z score for a bond length (or angle) is the number of standard deviations the observed value is removed from the expected value. A bond length (or angle) with $|Z| > 2$ is considered an outlier worth inspection. RMSZ is the root-mean-square of all Z scores of the bond lengths (or angles).

Mol	Type	Chain	Res	Link	Bond lengths			Bond angles		
					Counts	RMSZ	$\# Z > 2$	Counts	RMSZ	$\# Z > 2$
2	NAG	A	1574	1	14,14,15	0.63	0	17,19,21	0.89	1 (5%)
2	NAG	A	1572	1	14,14,15	0.51	0	17,19,21	0.94	0
2	NAG	A	1569	1	14,14,15	0.61	0	17,19,21	1.68	3 (17%)
2	NAG	A	1571	1	14,14,15	0.57	0	17,19,21	1.27	2 (11%)

Mol	Type	Chain	Res	Link	Bond lengths			Bond angles		
					Counts	RMSZ	# Z > 2	Counts	RMSZ	# Z > 2
2	NAG	A	1570	1	14,14,15	0.48	0	17,19,21	1.21	2 (11%)
2	NAG	A	1573	1	14,14,15	0.53	0	17,19,21	1.00	1 (5%)
2	NAG	A	1575	1	14,14,15	0.53	0	17,19,21	1.10	2 (11%)

In the following table, the Chirals column lists the number of chiral outliers, the number of chiral centers analysed, the number of these observed in the model and the number defined in the Chemical Component Dictionary. Similar counts are reported in the Torsion and Rings columns. '-' means no outliers of that kind were identified.

Mol	Type	Chain	Res	Link	Chirals	Torsions	Rings
2	NAG	A	1574	1	-	4/6/23/26	0/1/1/1
2	NAG	A	1572	1	-	4/6/23/26	0/1/1/1
2	NAG	A	1569	1	-	5/6/23/26	0/1/1/1
2	NAG	A	1571	1	-	2/6/23/26	0/1/1/1
2	NAG	A	1570	1	-	3/6/23/26	0/1/1/1
2	NAG	A	1573	1	-	1/6/23/26	0/1/1/1
2	NAG	A	1575	1	-	4/6/23/26	0/1/1/1

There are no bond length outliers.

All (11) bond angle outliers are listed below:

Mol	Chain	Res	Type	Atoms	Z	Observed(°)	Ideal(°)
2	A	1569	NAG	C1-O5-C5	4.47	118.25	112.19
2	A	1571	NAG	C1-O5-C5	3.17	116.48	112.19
2	A	1569	NAG	C1-C2-N2	-2.38	106.42	110.49
2	A	1574	NAG	C1-C2-N2	2.38	114.56	110.49
2	A	1575	NAG	C1-O5-C5	2.32	115.34	112.19
2	A	1570	NAG	C4-C3-C2	-2.23	107.75	111.02
2	A	1570	NAG	O5-C1-C2	-2.15	107.90	111.29
2	A	1573	NAG	C4-C3-C2	-2.12	107.91	111.02
2	A	1571	NAG	C8-C7-N2	2.09	119.64	116.10
2	A	1569	NAG	O5-C1-C2	2.09	114.58	111.29
2	A	1575	NAG	O4-C4-C3	-2.04	105.64	110.35

There are no chirality outliers.

All (23) torsion outliers are listed below:

Mol	Chain	Res	Type	Atoms
2	A	1569	NAG	C8-C7-N2-C2

Continued on next page...

Continued from previous page...

Mol	Chain	Res	Type	Atoms
2	A	1569	NAG	O7-C7-N2-C2
2	A	1570	NAG	C3-C2-N2-C7
2	A	1570	NAG	C8-C7-N2-C2
2	A	1570	NAG	O7-C7-N2-C2
2	A	1572	NAG	C8-C7-N2-C2
2	A	1572	NAG	O7-C7-N2-C2
2	A	1574	NAG	C8-C7-N2-C2
2	A	1574	NAG	O7-C7-N2-C2
2	A	1574	NAG	C4-C5-C6-O6
2	A	1569	NAG	C4-C5-C6-O6
2	A	1571	NAG	C8-C7-N2-C2
2	A	1571	NAG	O7-C7-N2-C2
2	A	1575	NAG	C8-C7-N2-C2
2	A	1574	NAG	O5-C5-C6-O6
2	A	1575	NAG	C4-C5-C6-O6
2	A	1572	NAG	C4-C5-C6-O6
2	A	1575	NAG	O7-C7-N2-C2
2	A	1572	NAG	O5-C5-C6-O6
2	A	1569	NAG	O5-C5-C6-O6
2	A	1575	NAG	O5-C5-C6-O6
2	A	1569	NAG	C3-C2-N2-C7
2	A	1573	NAG	C3-C2-N2-C7

There are no ring outliers.

2 monomers are involved in 3 short contacts:

Mol	Chain	Res	Type	Clashes	Symm-Clashes
2	A	1571	NAG	1	0
2	A	1575	NAG	2	0

5.7 Other polymers [i](#)

There are no such residues in this entry.

5.8 Polymer linkage issues [i](#)

There are no chain breaks in this entry.

6 Fit of model and data [i](#)

6.1 Protein, DNA and RNA chains [i](#)

In the following table, the column labelled '#RSRZ> 2' contains the number (and percentage) of RSRZ outliers, followed by percent RSRZ outliers for the chain as percentile scores relative to all X-ray entries and entries of similar resolution. The OWAB column contains the minimum, median, 95th percentile and maximum values of the occupancy-weighted average B-factor per residue. The column labelled 'Q< 0.9' lists the number of (and percentage) of residues with an average occupancy less than 0.9.

Mol	Chain	Analysed	<RSRZ>	#RSRZ>2	OWAB(Å ²)	Q<0.9
1	A	564/731 (77%)	-0.31	1 (0%) 95 90	13, 29, 48, 59	0

All (1) RSRZ outliers are listed below:

Mol	Chain	Res	Type	RSRZ
1	A	147	GLN	2.6

6.2 Non-standard residues in protein, DNA, RNA chains [i](#)

There are no non-standard protein/DNA/RNA residues in this entry.

6.3 Carbohydrates [i](#)

There are no monosaccharides in this entry.

6.4 Ligands [i](#)

In the following table, the Atoms column lists the number of modelled atoms in the group and the number defined in the chemical component dictionary. The B-factors column lists the minimum, median, 95th percentile and maximum values of B factors of atoms in the group. The column labelled 'Q< 0.9' lists the number of atoms with occupancy less than 0.9.

Mol	Type	Chain	Res	Atoms	RSCC	RSR	B-factors(Å ²)	Q<0.9
2	NAG	A	1574	14/15	0.75	0.35	53,54,56,56	0
2	NAG	A	1573	14/15	0.80	0.39	60,62,62,62	0
2	NAG	A	1572	14/15	0.81	0.35	51,52,53,53	0
3	NA	A	1577	1/1	0.85	0.26	31,31,31,31	0
2	NAG	A	1569	14/15	0.86	0.28	56,57,58,58	0
2	NAG	A	1571	14/15	0.86	0.32	46,48,49,49	0

Continued on next page...

Continued from previous page...

Mol	Type	Chain	Res	Atoms	RSCC	RSR	B-factors(\AA^2)	Q<0.9
2	NAG	A	1575	14/15	0.89	0.32	46,48,49,49	0
2	NAG	A	1570	14/15	0.91	0.22	40,41,42,42	0
3	NA	A	1576	1/1	0.98	0.10	39,39,39,39	0

6.5 Other polymers [i](#)

There are no such residues in this entry.