



Full wwPDB X-ray Structure Validation Report ⓘ

Dec 3, 2023 – 10:47 am GMT

PDB ID : 1UYE
Title : Human Hsp90-alpha with 8-(2-chloro-3,4,5-trimethoxy-benzyl)-9-pent-4-ynyl-9H-purin-6-ylamine
Authors : Wright, L.; Barril, X.; Dymock, B.; Sheridan, L.; Surgenor, A.; Beswick, M.; Drysdale, M.; Collier, A.; Massey, A.; Davies, N.; Fink, A.; Fromont, C.; Aherne, W.; Boxall, K.; Sharp, S.; Workman, P.; Hubbard, R.E.
Deposited on : 2004-03-02
Resolution : 2.00 Å(reported)

This is a Full wwPDB X-ray Structure Validation Report for a publicly released PDB entry.

We welcome your comments at validation@mail.wwpdb.org

A user guide is available at

<https://www.wwpdb.org/validation/2017/XrayValidationReportHelp>

with specific help available everywhere you see the ⓘ symbol.

The types of validation reports are described at

<http://www.wwpdb.org/validation/2017/FAQs#types>.

The following versions of software and data (see [references ⓘ](#)) were used in the production of this report:

MolProbity : 4.02b-467
Mogul : 1.8.4, CSD as541be (2020)
Xtriage (Phenix) : 1.13
EDS : **NOT EXECUTED**
Percentile statistics : 20191225.v01 (using entries in the PDB archive December 25th 2019)
Ideal geometry (proteins) : Engh & Huber (2001)
Ideal geometry (DNA, RNA) : Parkinson et al. (1996)
Validation Pipeline (wwPDB-VP) : 2.36

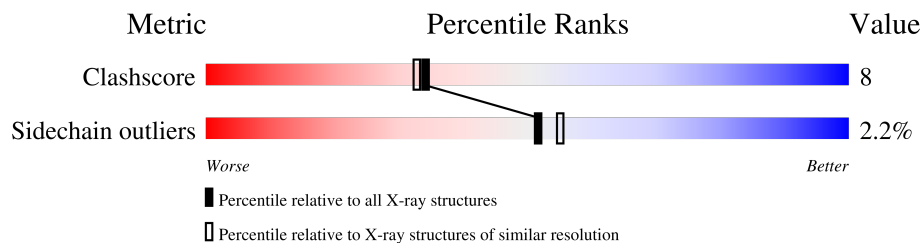
1 Overall quality at a glance

The following experimental techniques were used to determine the structure:

X-RAY DIFFRACTION

The reported resolution of this entry is 2.00 Å.


Percentile scores (ranging between 0-100) for global validation metrics of the entry are shown in the following graphic. The table shows the number of entries on which the scores are based.



Metric	Whole archive (#Entries)	Similar resolution (#Entries, resolution range(Å))
Clashscore	141614	9178 (2.00-2.00)
Sidechain outliers	138945	9053 (2.00-2.00)

The table below summarises the geometric issues observed across the polymeric chains and their fit to the electron density. The red, orange, yellow and green segments of the lower bar indicate the fraction of residues that contain outliers for ≥ 3 , 2, 1 and 0 types of geometric quality criteria respectively. A grey segment represents the fraction of residues that are not modelled. The numeric value for each fraction is indicated below the corresponding segment, with a dot representing fractions $\leq 5\%$.

Note EDS was not executed.

Mol	Chain	Length	Quality of chain
1	A	236	

2 Entry composition [i](#)

There are 3 unique types of molecules in this entry. The entry contains 1951 atoms, of which 0 are hydrogens and 0 are deuteriums.

In the tables below, the ZeroOcc column contains the number of atoms modelled with zero occupancy, the AltConf column contains the number of residues with at least one atom in alternate conformation and the Trace column contains the number of residues modelled with at most 2 atoms.

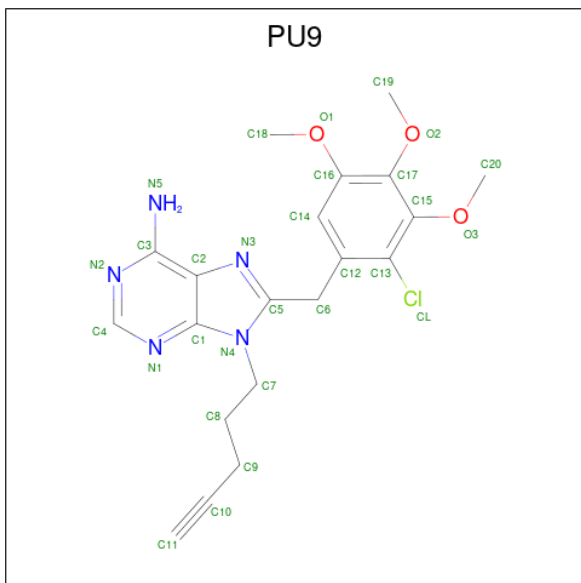
- Molecule 1 is a protein called HEAT SHOCK PROTEIN HSP 90-ALPHA.

Mol	Chain	Residues	Atoms					ZeroOcc	AltConf	Trace
			Total	C	N	O	S			
1	A	209	1645	1045	271	324	5	0	1	0

There is a discrepancy between the modelled and reference sequences:

Chain	Residue	Modelled	Actual	Comment	Reference
A	63	SER	THR	conflict	UNP P07900

- Molecule 2 is 8-(2-CHLORO-3,4,5-TRIMETHOXY-BENZYL)-9-PENT-4-YLNYL-9H-PURIN-6-YLAMINE (three-letter code: PU9) (formula: C₂₀H₂₂ClN₅O₃).



Mol	Chain	Residues	Atoms					ZeroOcc	AltConf
			Total	C	Cl	N	O		
2	A	1	29	20	1	5	3	0	0

- Molecule 3 is water.

Mol	Chain	Residues	Atoms		ZeroOcc	AltConf
3	A	277	Total 277	O 277	0	0

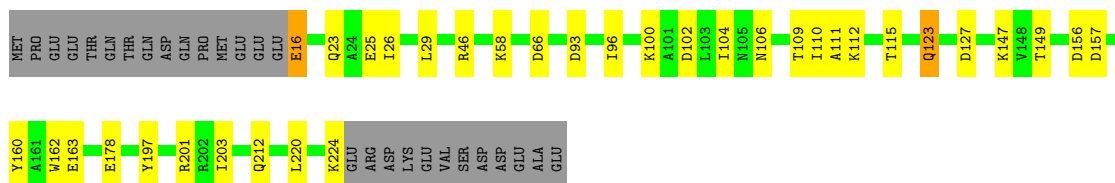
3 Residue-property plots [i](#)

These plots are drawn for all protein, RNA, DNA and oligosaccharide chains in the entry. The first graphic for a chain summarises the proportions of the various outlier classes displayed in the second graphic. The second graphic shows the sequence view annotated by issues in geometry. Residues are color-coded according to the number of geometric quality criteria for which they contain at least one outlier: green = 0, yellow = 1, orange = 2 and red = 3 or more. Stretches of 2 or more consecutive residues without any outlier are shown as a green connector. Residues present in the sample, but not in the model, are shown in grey.

Note EDS was not executed.

- Molecule 1: HEAT SHOCK PROTEIN HSP 90-ALPHA

Chain A:  74% 14% 11%



4 Data and refinement statistics

EDS was not executed - this section is therefore incomplete.

Property	Value	Source
Space group	I 2 2 2	Depositor
Cell constants a, b, c, α , β , γ	66.70Å 90.75Å 98.17Å 90.00° 90.00° 90.00°	Depositor
Resolution (Å)	67.42 – 2.00	Depositor
% Data completeness (in resolution range)	94.2 (67.42-2.00)	Depositor
R_{merge}	0.09	Depositor
R_{sym}	(Not available)	Depositor
$\langle I/\sigma(I) \rangle$ ¹	2.52 (at 2.01Å)	Xtrriage
Refinement program	REFMAC	Depositor
R, R_{free}	0.183 , 0.218	Depositor
Wilson B-factor (Å ²)	25.9	Xtrriage
Anisotropy	0.216	Xtrriage
L-test for twinning ²	$\langle L \rangle = 0.46$, $\langle L^2 \rangle = 0.29$	Xtrriage
Estimated twinning fraction	No twinning to report.	Xtrriage
Total number of atoms	1951	wwPDB-VP
Average B, all atoms (Å ²)	38.0	wwPDB-VP

Xtrriage's analysis on translational NCS is as follows: *The largest off-origin peak in the Patterson function is 6.55% of the height of the origin peak. No significant pseudotranslation is detected.*

¹Intensities estimated from amplitudes.

²Theoretical values of $\langle |L| \rangle$, $\langle L^2 \rangle$ for acentric reflections are 0.5, 0.333 respectively for untwinned datasets, and 0.375, 0.2 for perfectly twinned datasets.

5 Model quality [i](#)

5.1 Standard geometry [i](#)

Bond lengths and bond angles in the following residue types are not validated in this section: PU9

The Z score for a bond length (or angle) is the number of standard deviations the observed value is removed from the expected value. A bond length (or angle) with $|Z| > 5$ is considered an outlier worth inspection. RMSZ is the root-mean-square of all Z scores of the bond lengths (or angles).

Mol	Chain	Bond lengths		Bond angles	
		RMSZ	# Z >5	RMSZ	# Z >5
1	A	0.71	0/1678	0.86	5/2262 (0.2%)

There are no bond length outliers.

All (5) bond angle outliers are listed below:

Mol	Chain	Res	Type	Atoms	Z	Observed(°)	Ideal(°)
1	A	93	ASP	CB-CG-OD2	6.02	123.72	118.30
1	A	127	ASP	CB-CG-OD2	5.92	123.62	118.30
1	A	157	ASP	CB-CG-OD2	5.88	123.59	118.30
1	A	156	ASP	CB-CG-OD2	5.69	123.42	118.30
1	A	66	ASP	CB-CG-OD2	5.16	122.94	118.30

There are no chirality outliers.

There are no planarity outliers.

5.2 Too-close contacts [i](#)

In the following table, the Non-H and H(model) columns list the number of non-hydrogen atoms and hydrogen atoms in the chain respectively. The H(added) column lists the number of hydrogen atoms added and optimized by MolProbity. The Clashes column lists the number of clashes within the asymmetric unit, whereas Symm-Clashes lists symmetry-related clashes.

Mol	Chain	Non-H	H(model)	H(added)	Clashes	Symm-Clashes
1	A	1645	0	1646	28	0
2	A	29	0	22	4	0
3	A	277	0	0	11	4
All	All	1951	0	1668	28	4

The all-atom clashscore is defined as the number of clashes found per 1000 atoms (including

hydrogen atoms). The all-atom clashscore for this structure is 8.

All (28) close contacts within the same asymmetric unit are listed below, sorted by their clash magnitude.

Atom-1	Atom-2	Interatomic distance (Å)	Clash overlap (Å)
1:A:58:LYS:HG2	1:A:96:ILE:HD13	1.59	0.84
1:A:123:GLN:C	3:A:2165:HOH:O	2.25	0.74
1:A:212:GLN:HG3	3:A:2252:HOH:O	1.87	0.72
1:A:106:ASN:O	1:A:109:THR:HG22	1.92	0.70
1:A:123:GLN:CA	3:A:2165:HOH:O	2.40	0.70
1:A:147:LYS:HD2	1:A:163:GLU:CD	2.14	0.67
1:A:162:TRP:CE2	2:A:1224:PU9:H203	2.32	0.64
1:A:197:TYR:O	1:A:203[B]:ILE:HD11	1.98	0.62
1:A:123:GLN:HA	3:A:2165:HOH:O	2.01	0.59
1:A:163:GLU:OE1	3:A:2198:HOH:O	2.17	0.58
1:A:109:THR:CG2	1:A:110:ILE:N	2.66	0.58
1:A:102:ASP:HA	1:A:106:ASN:HB2	1.89	0.54
1:A:100:LYS:HG2	1:A:104:ILE:HD12	1.90	0.53
1:A:162:TRP:CD2	2:A:1224:PU9:C20	2.92	0.52
1:A:149:THR:OG1	1:A:163:GLU:OE2	2.26	0.52
1:A:100:LYS:HB2	1:A:160:TYR:CZ	2.45	0.51
1:A:201:ARG:HD2	3:A:2239:HOH:O	2.10	0.50
1:A:109:THR:HG23	1:A:110:ILE:N	2.26	0.49
1:A:29:LEU:HB2	1:A:115:THR:HG23	1.96	0.48
1:A:201:ARG:HD2	3:A:2125:HOH:O	2.17	0.45
1:A:178:GLU:HG2	3:A:2219:HOH:O	2.16	0.45
1:A:25:GLU:HG2	3:A:2154:HOH:O	2.19	0.42
1:A:111:ALA:HB2	2:A:1224:PU9:H181	2.02	0.42
1:A:23:GLN:NE2	1:A:112:LYS:HD2	2.34	0.41
1:A:16:GLU:N	3:A:2002:HOH:O	2.52	0.41
1:A:26:ILE:HG13	3:A:2011:HOH:O	2.18	0.41
1:A:162:TRP:CD2	2:A:1224:PU9:H203	2.55	0.41

All (4) symmetry-related close contacts are listed below. The label for Atom-2 includes the symmetry operator and encoded unit-cell translations to be applied.

Atom-1	Atom-2	Interatomic distance (Å)	Clash overlap (Å)
3:A:2003:HOH:O	3:A:2271:HOH:O[8_555]	2.16	0.04
3:A:2030:HOH:O	3:A:2030:HOH:O[2_555]	2.16	0.04
3:A:2078:HOH:O	3:A:2086:HOH:O[2_555]	2.16	0.04
3:A:2110:HOH:O	3:A:2209:HOH:O[8_455]	2.16	0.04

5.3 Torsion angles [i](#)

5.3.1 Protein backbone [i](#)

There are no protein backbone outliers to report in this entry.

5.3.2 Protein sidechains [i](#)

In the following table, the Percentiles column shows the percent sidechain outliers of the chain as a percentile score with respect to all X-ray entries followed by that with respect to entries of similar resolution.

The Analysed column shows the number of residues for which the sidechain conformation was analysed, and the total number of residues.

Mol	Chain	Analysed	Rotameric	Outliers	Percentiles
1	A	181/206 (88%)	177 (98%)	4 (2%)	52 55

All (4) residues with a non-rotameric sidechain are listed below:

Mol	Chain	Res	Type
1	A	16	GLU
1	A	46	ARG
1	A	123	GLN
1	A	224	LYS

Sometimes sidechains can be flipped to improve hydrogen bonding and reduce clashes. All (3) such sidechains are listed below:

Mol	Chain	Res	Type
1	A	23	GLN
1	A	79	ASN
1	A	194	GLN

5.3.3 RNA [i](#)

There are no RNA molecules in this entry.

5.4 Non-standard residues in protein, DNA, RNA chains [i](#)

There are no non-standard protein/DNA/RNA residues in this entry.

5.5 Carbohydrates [i](#)

There are no monosaccharides in this entry.

5.6 Ligand geometry [i](#)

1 ligand is modelled in this entry.

In the following table, the Counts columns list the number of bonds (or angles) for which Mogul statistics could be retrieved, the number of bonds (or angles) that are observed in the model and the number of bonds (or angles) that are defined in the Chemical Component Dictionary. The Link column lists molecule types, if any, to which the group is linked. The Z score for a bond length (or angle) is the number of standard deviations the observed value is removed from the expected value. A bond length (or angle) with $|Z| > 2$ is considered an outlier worth inspection. RMSZ is the root-mean-square of all Z scores of the bond lengths (or angles).

Mol	Type	Chain	Res	Link	Bond lengths			Bond angles		
					Counts	RMSZ	# Z > 2	Counts	RMSZ	# Z > 2
2	PU9	A	1224	-	27,31,31	1.70	7 (25%)	27,43,43	4.01	10 (37%)

In the following table, the Chirals column lists the number of chiral outliers, the number of chiral centers analysed, the number of these observed in the model and the number defined in the Chemical Component Dictionary. Similar counts are reported in the Torsion and Rings columns. '-' means no outliers of that kind were identified.

Mol	Type	Chain	Res	Link	Chirals	Torsions	Rings
2	PU9	A	1224	-	-	1/14/15/15	0/3/3/3

All (7) bond length outliers are listed below:

Mol	Chain	Res	Type	Atoms	Z	Observed(Å)	Ideal(Å)
2	A	1224	PU9	O3-C20	-3.44	1.32	1.42
2	A	1224	PU9	O2-C17	3.11	1.44	1.38
2	A	1224	PU9	C3-N5	2.90	1.44	1.34
2	A	1224	PU9	C9-C10	2.89	1.53	1.47
2	A	1224	PU9	C13-C12	2.49	1.42	1.39
2	A	1224	PU9	O3-C15	2.47	1.42	1.38
2	A	1224	PU9	C13-CL	2.10	1.77	1.72

All (10) bond angle outliers are listed below:

Mol	Chain	Res	Type	Atoms	Z	Observed(°)	Ideal(°)
2	A	1224	PU9	C20-O3-C15	16.74	160.66	114.78
2	A	1224	PU9	O3-C15-C13	6.63	129.92	120.05

Continued on next page...

Continued from previous page...

Mol	Chain	Res	Type	Atoms	Z	Observed(°)	Ideal(°)
2	A	1224	PU9	O3-C15-C17	-5.29	108.14	120.39
2	A	1224	PU9	C15-C13-C12	-3.99	117.99	121.46
2	A	1224	PU9	N1-C4-N2	-3.88	122.62	128.68
2	A	1224	PU9	C18-O1-C16	3.36	122.60	117.53
2	A	1224	PU9	C12-C13-CL	2.34	121.64	119.18
2	A	1224	PU9	C1-C2-N3	-2.29	107.14	109.47
2	A	1224	PU9	C19-O2-C17	2.26	120.97	114.78
2	A	1224	PU9	O2-C17-C16	2.05	123.08	120.12

There are no chirality outliers.

All (1) torsion outliers are listed below:

Mol	Chain	Res	Type	Atoms
2	A	1224	PU9	N3-C5-C6-C12

There are no ring outliers.

1 monomer is involved in 4 short contacts:

Mol	Chain	Res	Type	Clashes	Symm-Clashes
2	A	1224	PU9	4	0

5.7 Other polymers [i](#)

There are no such residues in this entry.

5.8 Polymer linkage issues [i](#)

There are no chain breaks in this entry.

6 Fit of model and data

6.1 Protein, DNA and RNA chains

EDS was not executed - this section is therefore empty.

6.2 Non-standard residues in protein, DNA, RNA chains

EDS was not executed - this section is therefore empty.

6.3 Carbohydrates

EDS was not executed - this section is therefore empty.

6.4 Ligands

EDS was not executed - this section is therefore empty.

6.5 Other polymers

EDS was not executed - this section is therefore empty.