



# Full wwPDB X-ray Structure Validation Report ⓘ

Jan 2, 2024 – 08:21 pm GMT

PDB ID : 4UXU  
Title : Crystal Structure of the Extracellular Domain of the Human Alpha9 Nicotinic Acetylcholine Receptor In Complex with Methyllycaconitine  
Authors : Zouridakis, M.; Giastas, P.; Zarkadas, E.; Tzartos, S.J.  
Deposited on : 2014-08-27  
Resolution : 1.71 Å(reported)

This is a Full wwPDB X-ray Structure Validation Report for a publicly released PDB entry.

We welcome your comments at [validation@mail.wwpdb.org](mailto:validation@mail.wwpdb.org)

A user guide is available at

<https://www.wwpdb.org/validation/2017/XrayValidationReportHelp>

with specific help available everywhere you see the ⓘ symbol.

The types of validation reports are described at

<http://www.wwpdb.org/validation/2017/FAQs#types>.

---

The following versions of software and data (see [references ⓘ](#)) were used in the production of this report:

MolProbity : 4.02b-467  
Mogul : 1.8.4, CSD as541be (2020)  
Xtriage (Phenix) : 1.13  
EDS : 2.36  
buster-report : 1.1.7 (2018)  
Percentile statistics : 20191225.v01 (using entries in the PDB archive December 25th 2019)  
Refmac : 5.8.0158  
CCP4 : 7.0.044 (Gargrove)  
Ideal geometry (proteins) : Engh & Huber (2001)  
Ideal geometry (DNA, RNA) : Parkinson et al. (1996)  
Validation Pipeline (wwPDB-VP) : 2.36

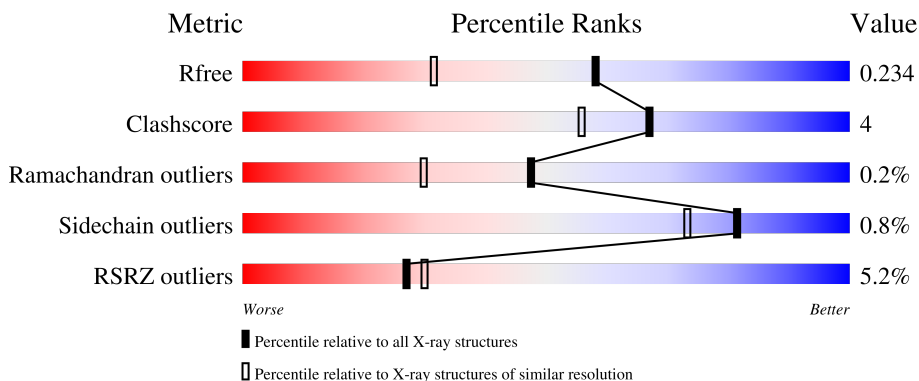
# 1 Overall quality at a glance

The following experimental techniques were used to determine the structure:

*X-RAY DIFFRACTION*

The reported resolution of this entry is 1.71 Å.

Percentile scores (ranging between 0-100) for global validation metrics of the entry are shown in the following graphic. The table shows the number of entries on which the scores are based.



Metric	Whole archive (#Entries)	Similar resolution (#Entries, resolution range(Å))
$R_{free}$	130704	5722 (1.74-1.70)
Clashscore	141614	6152 (1.74-1.70)
Ramachandran outliers	138981	6051 (1.74-1.70)
Sidechain outliers	138945	6051 (1.74-1.70)
RSRZ outliers	127900	5629 (1.74-1.70)

The table below summarises the geometric issues observed across the polymeric chains and their fit to the electron density. The red, orange, yellow and green segments of the lower bar indicate the fraction of residues that contain outliers for  $\geq 3$ , 2, 1 and 0 types of geometric quality criteria respectively. A grey segment represents the fraction of residues that are not modelled. The numeric value for each fraction is indicated below the corresponding segment, with a dot representing fractions  $\leq 5\%$ . The upper red bar (where present) indicates the fraction of residues that have poor fit to the electron density. The numeric value is given above the bar.

Mol	Chain	Length	Quality of chain
1	A	218	
1	B	218	

## 2 Entry composition

There are 7 unique types of molecules in this entry. The entry contains 4168 atoms, of which 0 are hydrogens and 0 are deuteriums.

In the tables below, the ZeroOcc column contains the number of atoms modelled with zero occupancy, the AltConf column contains the number of residues with at least one atom in alternate conformation and the Trace column contains the number of residues modelled with at most 2 atoms.

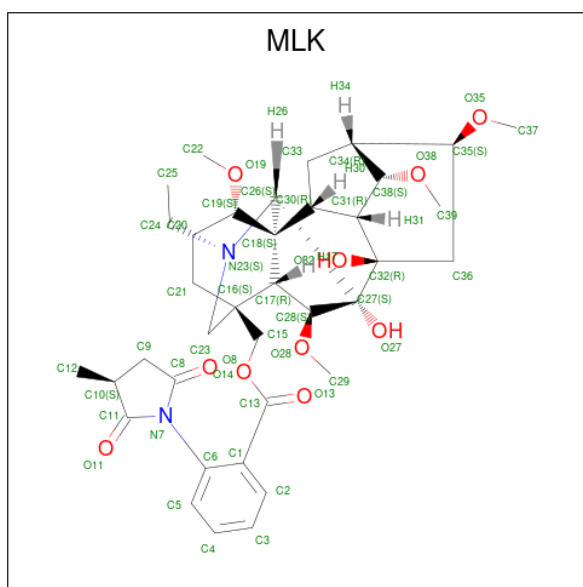
- Molecule 1 is a protein called NEURONAL ACETYLCHOLINE RECEPTOR SUBUNIT ALPHA-9.

Mol	Chain	Residues	Atoms					ZeroOcc	AltConf	Trace
			Total	C	N	O	S			
1	A	210	1720	1096	281	337	6	0	2	0
1	B	210	1718	1095	280	337	6	0	2	0

There are 12 discrepancies between the modelled and reference sequences:

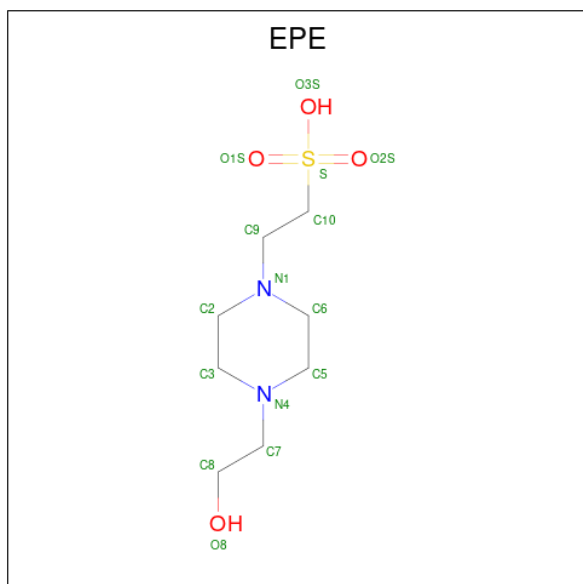
Chain	Residue	Modelled	Actual	Comment	Reference
A	213	HIS	-	expression tag	UNP Q9UGM1
A	214	HIS	-	expression tag	UNP Q9UGM1
A	215	HIS	-	expression tag	UNP Q9UGM1
A	216	HIS	-	expression tag	UNP Q9UGM1
A	217	HIS	-	expression tag	UNP Q9UGM1
A	218	HIS	-	expression tag	UNP Q9UGM1
B	213	HIS	-	expression tag	UNP Q9UGM1
B	214	HIS	-	expression tag	UNP Q9UGM1
B	215	HIS	-	expression tag	UNP Q9UGM1
B	216	HIS	-	expression tag	UNP Q9UGM1
B	217	HIS	-	expression tag	UNP Q9UGM1
B	218	HIS	-	expression tag	UNP Q9UGM1

- Molecule 2 is METHYLLYCACONITINE (three-letter code: MLK) (formula: C<sub>37</sub>H<sub>50</sub>N<sub>2</sub>O<sub>10</sub>).



Mol	Chain	Residues	Atoms				ZeroOcc	AltConf
			Total	C	N	O		
2	A	1	49	37	2	10	0	0
2	B	1	49	37	2	10	0	0

- Molecule 3 is 4-(2-HYDROXYETHYL)-1-PIPERAZINE ETHANESULFONIC ACID (three-letter code: EPE) (formula: C<sub>8</sub>H<sub>18</sub>N<sub>2</sub>O<sub>4</sub>S).



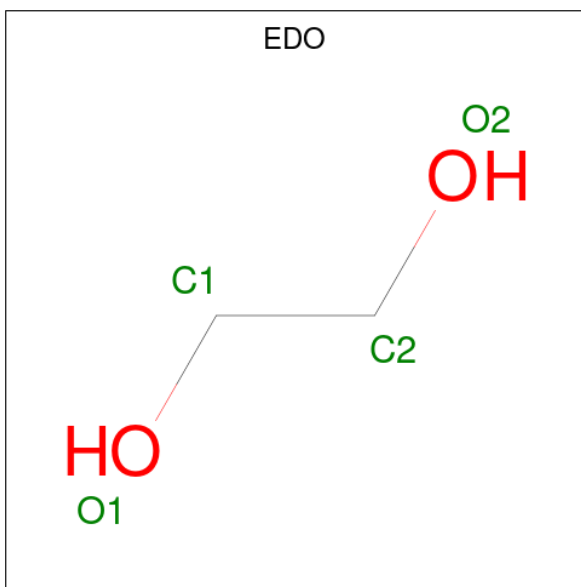
Mol	Chain	Residues	Atoms					ZeroOcc	AltConf
			Total	C	N	O	S		
3	A	1	15	8	2	4	1	0	0

*Continued on next page...*

Continued from previous page...

Mol	Chain	Residues	Atoms					ZeroOcc	AltConf
3	A	1	Total	C	N	O	S	0	0
			15	8	2	4	1		
3	B	1	Total	C	N	O	S	0	0
			15	8	2	4	1		
3	B	1	Total	C	N	O	S	0	0
			15	8	2	4	1		

- Molecule 4 is 1,2-ETHANEDIOL (three-letter code: EDO) (formula: C<sub>2</sub>H<sub>6</sub>O<sub>2</sub>).



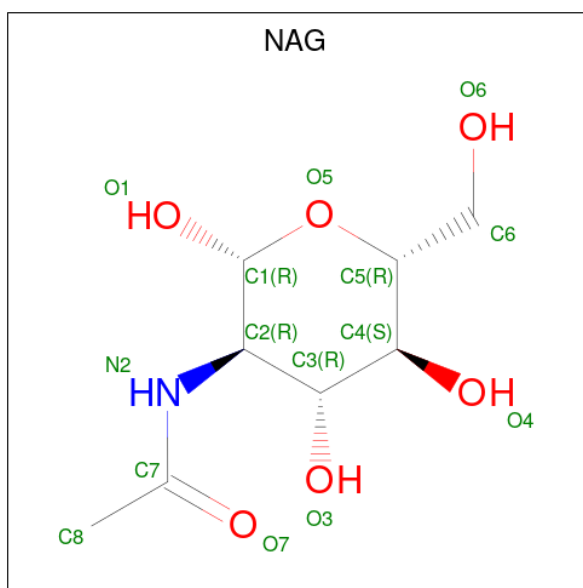
Mol	Chain	Residues	Atoms		ZeroOcc	AltConf	
4	A	1	Total	C	O	0	0
			4	2	2		
4	A	1	Total	C	O	0	0
			4	2	2		
4	B	1	Total	C	O	0	0
			4	2	2		

- Molecule 5 is SODIUM ION (three-letter code: NA) (formula: Na).

Mol	Chain	Residues	Atoms		ZeroOcc	AltConf
5	A	1	Total	Na	0	0
			1	1		
5	B	1	Total	Na	0	0
			1	1		

- Molecule 6 is 2-acetamido-2-deoxy-beta-D-glucopyranose (three-letter code: NAG) (formula:

C<sub>8</sub>H<sub>15</sub>NO<sub>6</sub>).



Mol	Chain	Residues	Atoms				ZeroOcc	AltConf
6	A	1	Total	C	N	O	0	0
			14	8	1	5		
6	A	1	Total	C	N	O	0	0
			14	8	1	5		
6	B	1	Total	C	N	O	0	0
			14	8	1	5		
6	B	1	Total	C	N	O	0	0
			14	8	1	5		

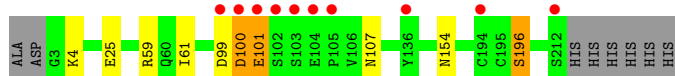
- Molecule 7 is water.

Mol	Chain	Residues	Atoms		ZeroOcc	AltConf
7	A	264	Total	O	0	0
			264	264		
7	B	238	Total	O	0	0
			238	238		

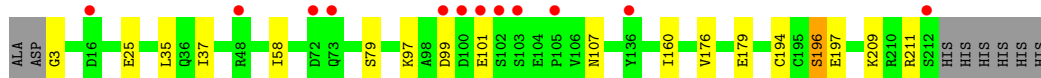
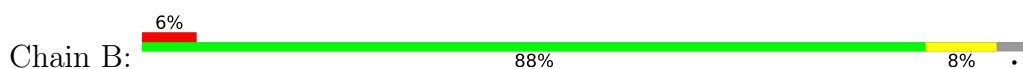
### 3 Residue-property plots [i](#)

These plots are drawn for all protein, RNA, DNA and oligosaccharide chains in the entry. The first graphic for a chain summarises the proportions of the various outlier classes displayed in the second graphic. The second graphic shows the sequence view annotated by issues in geometry and electron density. Residues are color-coded according to the number of geometric quality criteria for which they contain at least one outlier: green = 0, yellow = 1, orange = 2 and red = 3 or more. A red dot above a residue indicates a poor fit to the electron density ( $RSRZ > 2$ ). Stretches of 2 or more consecutive residues without any outlier are shown as a green connector. Residues present in the sample, but not in the model, are shown in grey.

- Molecule 1: NEURONAL ACETYLCHOLINE RECEPTOR SUBUNIT ALPHA-9



- Molecule 1: NEURONAL ACETYLCHOLINE RECEPTOR SUBUNIT ALPHA-9



## 4 Data and refinement statistics

Property	Value	Source
Space group	P 1 21 1	Depositor
Cell constants a, b, c, $\alpha$ , $\beta$ , $\gamma$	63.43Å 66.25Å 75.19Å 90.00° 102.76° 90.00°	Depositor
Resolution (Å)	41.61 – 1.71 41.60 – 1.71	Depositor EDS
% Data completeness (in resolution range)	96.7 (41.61-1.71) 96.7 (41.60-1.71)	Depositor EDS
$R_{merge}$	0.09	Depositor
$R_{sym}$	(Not available)	Depositor
$\langle I/\sigma(I) \rangle$ <sup>1</sup>	1.66 (at 1.71Å)	Xtrriage
Refinement program	PHENIX (PHENIX.REFINE)	Depositor
R, $R_{free}$	0.206 , 0.235 0.213 , 0.234	Depositor DCC
$R_{free}$ test set	3234 reflections (5.08%)	wwPDB-VP
Wilson B-factor (Å <sup>2</sup> )	20.3	Xtrriage
Anisotropy	0.513	Xtrriage
Bulk solvent $k_{sol}$ (e/Å <sup>3</sup> ), $B_{sol}$ (Å <sup>2</sup> )	0.35 , 50.9	EDS
L-test for twinning <sup>2</sup>	$\langle  L  \rangle = 0.50$ , $\langle L^2 \rangle = 0.33$	Xtrriage
Estimated twinning fraction	No twinning to report.	Xtrriage
$F_o, F_c$ correlation	0.95	EDS
Total number of atoms	4168	wwPDB-VP
Average B, all atoms (Å <sup>2</sup> )	27.0	wwPDB-VP

Xtrriage's analysis on translational NCS is as follows: *The largest off-origin peak in the Patterson function is 13.43% of the height of the origin peak. No significant pseudotranslation is detected.*

<sup>1</sup>Intensities estimated from amplitudes.

<sup>2</sup>Theoretical values of  $\langle |L| \rangle$ ,  $\langle L^2 \rangle$  for acentric reflections are 0.5, 0.333 respectively for untwinned datasets, and 0.375, 0.2 for perfectly twinned datasets.



## 5 Model quality [i](#)

### 5.1 Standard geometry [i](#)

Bond lengths and bond angles in the following residue types are not validated in this section: NAG, MLK, EDO, NA, EPE

The Z score for a bond length (or angle) is the number of standard deviations the observed value is removed from the expected value. A bond length (or angle) with  $|Z| > 5$  is considered an outlier worth inspection. RMSZ is the root-mean-square of all Z scores of the bond lengths (or angles).

Mol	Chain	Bond lengths		Bond angles	
		RMSZ	# Z  >5	RMSZ	# Z  >5
1	A	0.35	0/1770	0.56	1/2419 (0.0%)
1	B	0.36	0/1768	0.52	0/2416
All	All	0.36	0/3538	0.54	1/4835 (0.0%)

There are no bond length outliers.

All (1) bond angle outliers are listed below:

Mol	Chain	Res	Type	Atoms	Z	Observed(°)	Ideal(°)
1	A	100	ASP	C-N-CA	6.04	136.80	121.70

There are no chirality outliers.

There are no planarity outliers.

### 5.2 Too-close contacts [i](#)

In the following table, the Non-H and H(model) columns list the number of non-hydrogen atoms and hydrogen atoms in the chain respectively. The H(added) column lists the number of hydrogen atoms added and optimized by MolProbity. The Clashes column lists the number of clashes within the asymmetric unit, whereas Symm-Clashes lists symmetry-related clashes.

Mol	Chain	Non-H	H(model)	H(added)	Clashes	Symm-Clashes
1	A	1720	0	1628	10	0
1	B	1718	0	1627	13	0
2	A	49	0	50	1	0
2	B	49	0	50	2	0
3	A	30	0	36	1	0
3	B	30	0	36	2	0
4	A	8	0	12	2	0
4	B	4	0	6	0	0

*Continued on next page...*

Continued from previous page...

Mol	Chain	Non-H	H(model)	H(added)	Clashes	Symm-Clashes
5	A	1	0	0	0	0
5	B	1	0	0	0	0
6	A	28	0	26	0	0
6	B	28	0	26	0	0
7	A	264	0	0	7	2
7	B	238	0	0	4	2
All	All	4168	0	3497	28	2

The all-atom clashscore is defined as the number of clashes found per 1000 atoms (including hydrogen atoms). The all-atom clashscore for this structure is 4.

All (28) close contacts within the same asymmetric unit are listed below, sorted by their clash magnitude.

Atom-1	Atom-2	Interatomic distance (Å)	Clash overlap (Å)
1:A:99:ASP:HB3	1:A:101:GLU:HB3	1.55	0.88
1:A:4:LYS:N	7:A:3001:HOH:O	2.10	0.82
1:A:107:ASN:ND2	7:A:3150:HOH:O	2.19	0.73
1:A:100:ASP:HB2	1:A:101:GLU:HB2	1.72	0.71
2:B:1213:MLK:O8	7:B:3223:HOH:O	2.08	0.71
1:B:196:SER:N	7:B:3211:HOH:O	2.23	0.66
7:A:3193:HOH:O	1:B:194:CYS:O	2.16	0.59
1:B:35:LEU:HD12	1:B:160:ILE:HD11	1.89	0.54
1:B:97:LYS:NZ	1:B:99:ASP:O	2.35	0.51
1:B:25:GLU:H	1:B:25:GLU:CD	2.13	0.51
1:B:197:GLU:H	1:B:197:GLU:CD	2.15	0.49
1:B:179:GLU:HG3	1:B:209:LYS:HB3	1.95	0.48
1:A:196:SER:N	7:A:3236:HOH:O	2.46	0.48
1:A:100:ASP:OD2	7:A:3146:HOH:O	2.20	0.47
1:A:25:GLU:H	1:A:25:GLU:CD	2.18	0.46
2:A:1213:MLK:H242	2:A:1213:MLK:O27	2.16	0.46
1:B:107:ASN:ND2	7:B:3141:HOH:O	2.50	0.44
1:B:176:VAL:O	1:B:211:ARG:HD2	2.17	0.44
1:B:3:GLY:N	7:B:3001:HOH:O	2.51	0.44
3:B:1214:EPE:H31	3:B:1214:EPE:H81	1.65	0.44
3:A:1215:EPE:H81	7:A:3162:HOH:O	2.18	0.43
1:B:211:ARG:NH2	3:B:1214:EPE:O3S	2.49	0.42
1:A:61:ILE:HD11	4:A:1216:EDO:H12	2.01	0.42
1:B:37:ILE:HD13	1:B:58:ILE:HG12	2.02	0.41
2:B:1213:MLK:O27	2:B:1213:MLK:H242	2.20	0.41
1:B:99:ASP:OD2	1:B:101:GLU:HB2	2.21	0.41
1:A:154:ASN:HA	7:A:3183:HOH:O	2.20	0.41

Continued on next page...

Continued from previous page...

Atom-1	Atom-2	Interatomic distance (Å)	Clash overlap (Å)
1:A:59:ARG:NH1	4:A:1216:EDO:H11	2.35	0.41

All (2) symmetry-related close contacts are listed below. The label for Atom-2 includes the symmetry operator and encoded unit-cell translations to be applied.

Atom-1	Atom-2	Interatomic distance (Å)	Clash overlap (Å)
7:A:3220:HOH:O	7:B:3046:HOH:O[2_554]	1.98	0.22
7:A:3082:HOH:O	7:B:3042:HOH:O[2_554]	2.18	0.02

## 5.3 Torsion angles [i](#)

### 5.3.1 Protein backbone [i](#)

In the following table, the Percentiles column shows the percent Ramachandran outliers of the chain as a percentile score with respect to all X-ray entries followed by that with respect to entries of similar resolution.

The Analysed column shows the number of residues for which the backbone conformation was analysed, and the total number of residues.

Mol	Chain	Analysed	Favoured	Allowed	Outliers	Percentiles	
1	A	210/218 (96%)	204 (97%)	5 (2%)	1 (0%)	29	13
1	B	210/218 (96%)	200 (95%)	10 (5%)	0	100	100
All	All	420/436 (96%)	404 (96%)	15 (4%)	1 (0%)	47	30

All (1) Ramachandran outliers are listed below:

Mol	Chain	Res	Type
1	A	101	GLU

### 5.3.2 Protein sidechains [i](#)

In the following table, the Percentiles column shows the percent sidechain outliers of the chain as a percentile score with respect to all X-ray entries followed by that with respect to entries of similar resolution.

The Analysed column shows the number of residues for which the sidechain conformation was analysed, and the total number of residues.

Mol	Chain	Analysed	Rotameric	Outliers	Percentiles	
1	A	194/200 (97%)	193 (100%)	1 (0%)	88	83
1	B	194/200 (97%)	192 (99%)	2 (1%)	76	65
All	All	388/400 (97%)	385 (99%)	3 (1%)	81	73

All (3) residues with a non-rotameric sidechain are listed below:

Mol	Chain	Res	Type
1	A	196	SER
1	B	79	SER
1	B	196	SER

Sometimes sidechains can be flipped to improve hydrogen bonding and reduce clashes. There are no such sidechains identified.

### 5.3.3 RNA [i](#)

There are no RNA molecules in this entry.

### 5.4 Non-standard residues in protein, DNA, RNA chains [i](#)

There are no non-standard protein/DNA/RNA residues in this entry.

### 5.5 Carbohydrates [i](#)

There are no monosaccharides in this entry.

### 5.6 Ligand geometry [i](#)

Of 15 ligands modelled in this entry, 2 are monoatomic - leaving 13 for Mogul analysis.

In the following table, the Counts columns list the number of bonds (or angles) for which Mogul statistics could be retrieved, the number of bonds (or angles) that are observed in the model and the number of bonds (or angles) that are defined in the Chemical Component Dictionary. The Link column lists molecule types, if any, to which the group is linked. The Z score for a bond length (or angle) is the number of standard deviations the observed value is removed from the expected value. A bond length (or angle) with  $|Z| > 2$  is considered an outlier worth inspection. RMSZ is the root-mean-square of all Z scores of the bond lengths (or angles).

Mol	Type	Chain	Res	Link	Bond lengths			Bond angles		
					Counts	RMSZ	# Z  > 2	Counts	RMSZ	# Z  > 2
3	EPE	A	1214	-	15,15,15	1.98	1 (6%)	18,20,20	2.65	8 (44%)
6	NAG	B	2214	1	14,14,15	0.34	0	17,19,21	0.73	1 (5%)
3	EPE	B	1214	-	15,15,15	1.96	1 (6%)	18,20,20	2.80	8 (44%)
6	NAG	A	2215	1	14,14,15	0.38	0	17,19,21	0.49	0
2	MLK	B	1213	-	54,56,56	1.58	6 (11%)	78,92,92	1.36	11 (14%)
6	NAG	B	2215	1	14,14,15	0.32	0	17,19,21	0.45	0
4	EDO	A	1217	-	3,3,3	0.43	0	2,2,2	0.31	0
3	EPE	A	1215	-	15,15,15	1.92	1 (6%)	18,20,20	2.76	9 (50%)
4	EDO	A	1216	-	3,3,3	0.50	0	2,2,2	0.20	0
4	EDO	B	1215	-	3,3,3	0.53	0	2,2,2	0.14	0
3	EPE	B	1216	-	15,15,15	1.83	1 (6%)	18,20,20	2.72	9 (50%)
2	MLK	A	1213	-	54,56,56	1.59	6 (11%)	78,92,92	1.35	14 (17%)
6	NAG	A	2214	1	14,14,15	0.18	0	17,19,21	1.23	1 (5%)

In the following table, the Chirals column lists the number of chiral outliers, the number of chiral centers analysed, the number of these observed in the model and the number defined in the Chemical Component Dictionary. Similar counts are reported in the Torsion and Rings columns. '2' means no outliers of that kind were identified.

Mol	Type	Chain	Res	Link	Chirals	Torsions	Rings
3	EPE	A	1214	-	-	2/9/19/19	0/1/1/1
6	NAG	B	2214	1	-	0/6/23/26	0/1/1/1
3	EPE	B	1214	-	-	3/9/19/19	0/1/1/1
6	NAG	A	2215	1	-	0/6/23/26	0/1/1/1
2	MLK	B	1213	-	-	0/24/141/141	0/2/8/8
6	NAG	B	2215	1	-	0/6/23/26	0/1/1/1
4	EDO	A	1217	-	-	0/1/1/1	-
3	EPE	A	1215	-	-	7/9/19/19	0/1/1/1
4	EDO	A	1216	-	-	0/1/1/1	-
4	EDO	B	1215	-	-	0/1/1/1	-
3	EPE	B	1216	-	-	7/9/19/19	0/1/1/1
2	MLK	A	1213	-	-	2/24/141/141	0/2/8/8
6	NAG	A	2214	1	-	0/6/23/26	0/1/1/1

All (16) bond length outliers are listed below:

Mol	Chain	Res	Type	Atoms	Z	Observed(Å)	Ideal(Å)
3	A	1214	EPE	C10-S	-7.37	1.67	1.77
3	B	1214	EPE	C10-S	-7.24	1.67	1.77

Continued on next page...

*Continued from previous page...*

Mol	Chain	Res	Type	Atoms	Z	Observed(Å)	Ideal(Å)
3	A	1215	EPE	C10-S	-7.16	1.67	1.77
3	B	1216	EPE	C10-S	-6.77	1.67	1.77
2	B	1213	MLK	C8-N7	-5.65	1.32	1.40
2	A	1213	MLK	C11-N7	-5.42	1.32	1.40
2	A	1213	MLK	C8-N7	-5.20	1.33	1.40
2	A	1213	MLK	C1-C6	4.97	1.48	1.41
2	B	1213	MLK	C11-N7	-4.93	1.33	1.40
2	B	1213	MLK	C1-C6	4.85	1.48	1.41
2	A	1213	MLK	O14-C13	4.17	1.44	1.33
2	B	1213	MLK	O14-C13	4.15	1.44	1.33
2	B	1213	MLK	C18-C17	-3.19	1.52	1.56
2	A	1213	MLK	C18-C17	-3.13	1.52	1.56
2	A	1213	MLK	C6-N7	-2.90	1.40	1.44
2	B	1213	MLK	C6-N7	-2.73	1.40	1.44

All (61) bond angle outliers are listed below:

Mol	Chain	Res	Type	Atoms	Z	Observed(°)	Ideal(°)
3	A	1215	EPE	C6-N1-C2	5.42	121.03	108.83
3	B	1216	EPE	C6-N1-C2	5.32	120.81	108.83
3	A	1214	EPE	C6-N1-C2	5.29	120.74	108.83
3	B	1216	EPE	C5-N4-C3	5.20	120.53	108.83
3	A	1214	EPE	C5-N4-C3	5.18	120.49	108.83
3	A	1215	EPE	C5-N4-C3	5.15	120.42	108.83
3	B	1214	EPE	C6-N1-C2	5.13	120.37	108.83
3	B	1214	EPE	C5-N4-C3	5.08	120.27	108.83
6	A	2214	NAG	C1-O5-C5	4.72	118.59	112.19
3	B	1216	EPE	C9-N1-C2	4.09	121.70	111.23
3	B	1216	EPE	C7-N4-C3	3.97	121.39	111.23
3	B	1214	EPE	C7-N4-C3	3.92	121.26	111.23
3	B	1214	EPE	O2S-S-C10	3.82	111.51	106.92
2	B	1213	MLK	C21-C16-C17	3.77	114.61	110.00
3	A	1215	EPE	C7-N4-C5	3.58	120.38	111.23
3	B	1214	EPE	C9-N1-C2	3.55	120.30	111.23
3	A	1214	EPE	C7-N4-C3	3.54	120.30	111.23
3	B	1214	EPE	O1S-S-C10	3.49	111.12	106.92
2	A	1213	MLK	C9-C8-N7	3.36	110.88	108.06
3	A	1214	EPE	C9-N1-C6	3.31	119.71	111.23
2	B	1213	MLK	C9-C8-N7	3.29	110.83	108.06
3	A	1215	EPE	C9-N1-C2	3.27	119.59	111.23
3	A	1214	EPE	C9-N1-C2	3.25	119.55	111.23
3	A	1215	EPE	C9-N1-C6	3.19	119.39	111.23

*Continued on next page...*

*Continued from previous page...*

Mol	Chain	Res	Type	Atoms	Z	Observed(°)	Ideal(°)
3	B	1214	EPE	C9-N1-C6	3.16	119.32	111.23
3	A	1215	EPE	C7-N4-C3	3.11	119.19	111.23
3	A	1214	EPE	C7-N4-C5	3.10	119.17	111.23
3	B	1216	EPE	O1S-S-C10	3.10	110.64	106.92
2	A	1213	MLK	C10-C11-N7	3.09	110.20	108.26
2	B	1213	MLK	O32-C32-C27	-3.00	103.48	108.10
2	B	1213	MLK	C10-C11-N7	2.94	110.11	108.26
2	A	1213	MLK	O8-C8-C9	-2.84	123.10	127.24
2	A	1213	MLK	O14-C13-C1	2.82	117.79	112.21
3	B	1214	EPE	C7-N4-C5	2.80	118.40	111.23
3	B	1216	EPE	O2S-S-C10	2.71	110.18	106.92
2	B	1213	MLK	O8-C8-C9	-2.71	123.30	127.24
2	A	1213	MLK	O14-C15-C16	-2.69	104.58	108.47
3	A	1215	EPE	O2S-S-C10	2.66	110.12	106.92
3	B	1216	EPE	C7-N4-C5	2.64	117.98	111.23
2	A	1213	MLK	C21-C16-C17	2.60	113.18	110.00
2	A	1213	MLK	O14-C13-O13	-2.57	118.45	123.67
2	B	1213	MLK	C32-C31-C38	2.56	113.71	111.61
6	B	2214	NAG	C1-O5-C5	2.56	115.66	112.19
2	A	1213	MLK	C16-C17-C28	-2.55	105.78	111.96
2	A	1213	MLK	O32-C32-C27	-2.45	104.33	108.10
3	A	1215	EPE	O3S-S-C10	2.45	109.73	105.77
2	A	1213	MLK	C16-C23-N23	-2.40	108.95	113.17
3	B	1216	EPE	C9-N1-C6	2.38	117.32	111.23
2	B	1213	MLK	O14-C15-C16	-2.34	105.08	108.47
2	A	1213	MLK	C23-C16-C17	2.32	110.07	108.20
2	A	1213	MLK	C23-N23-C24	-2.32	107.90	111.33
3	A	1214	EPE	O3S-S-C10	2.30	109.48	105.77
2	B	1213	MLK	C16-C23-N23	-2.29	109.14	113.17
3	A	1215	EPE	C5-C6-N1	-2.26	106.00	110.64
2	A	1213	MLK	O8-C8-N7	2.24	126.02	124.01
3	B	1216	EPE	O3S-S-C10	2.24	109.39	105.77
2	B	1213	MLK	C16-C17-C28	-2.17	106.71	111.96
2	A	1213	MLK	C21-C16-C23	-2.09	109.46	111.43
2	B	1213	MLK	O8-C8-N7	2.08	125.88	124.01
2	B	1213	MLK	O14-C13-C1	2.03	116.22	112.21
3	A	1214	EPE	C3-C2-N1	-2.02	106.49	110.64

There are no chirality outliers.

All (21) torsion outliers are listed below:

Mol	Chain	Res	Type	Atoms
3	A	1214	EPE	C8-C7-N4-C3
3	A	1215	EPE	C9-C10-S-O1S
3	B	1214	EPE	C10-C9-N1-C6
3	B	1214	EPE	C8-C7-N4-C3
3	B	1216	EPE	C10-C9-N1-C2
3	B	1216	EPE	C8-C7-N4-C3
3	B	1216	EPE	N4-C7-C8-O8
3	A	1215	EPE	C9-C10-S-O3S
3	B	1216	EPE	C9-C10-S-O3S
3	A	1215	EPE	N4-C7-C8-O8
3	B	1216	EPE	S-C10-C9-N1
3	A	1215	EPE	C8-C7-N4-C3
3	A	1215	EPE	C10-C9-N1-C2
3	A	1215	EPE	C9-C10-S-O2S
3	B	1216	EPE	C9-C10-S-O1S
3	B	1216	EPE	C9-C10-S-O2S
3	B	1214	EPE	N4-C7-C8-O8
3	A	1214	EPE	C10-C9-N1-C2
3	A	1215	EPE	C10-C9-N1-C6
2	A	1213	MLK	C34-C35-O35-C37
2	A	1213	MLK	C36-C35-O35-C37

There are no ring outliers.

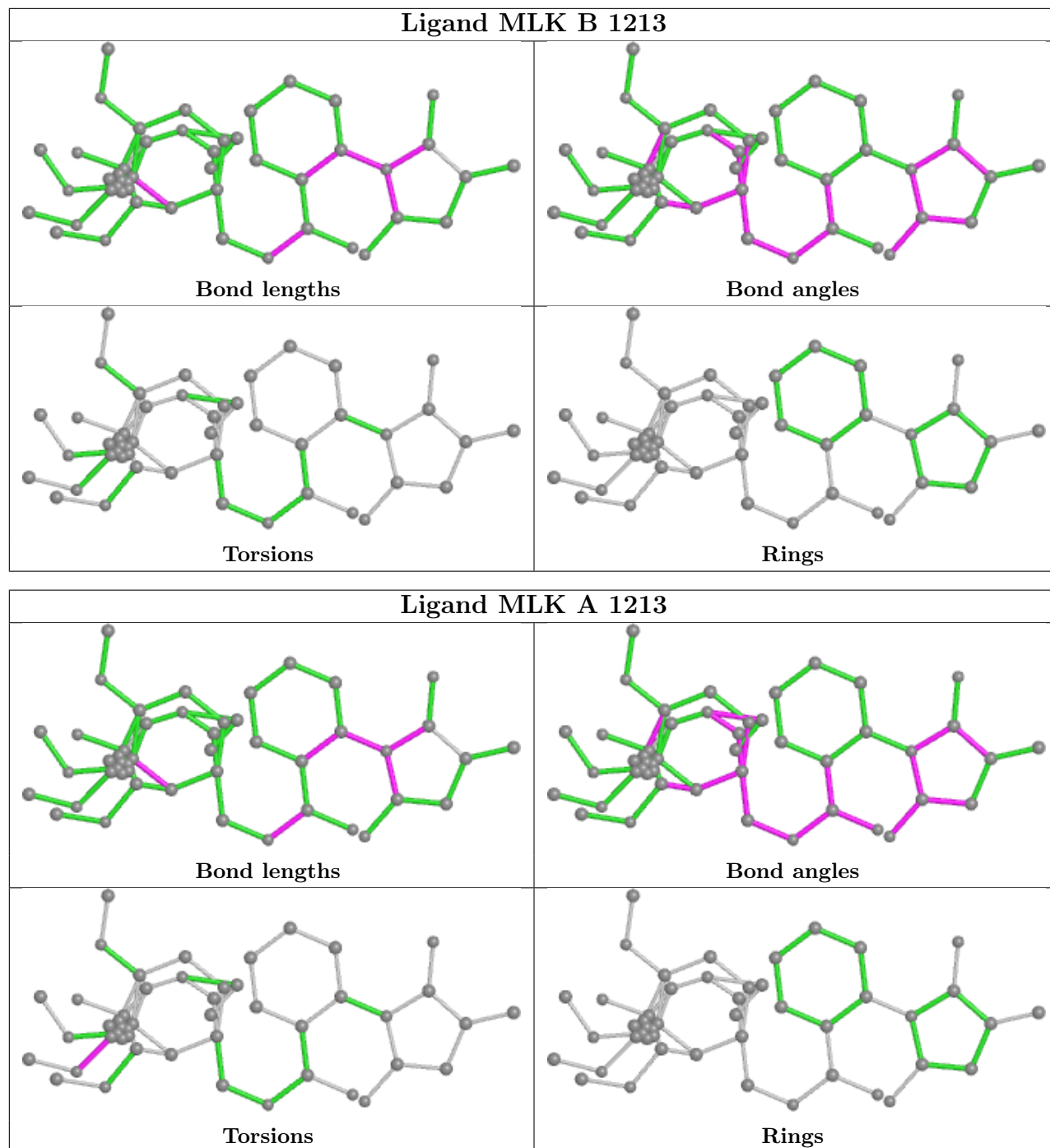
5 monomers are involved in 8 short contacts:

Mol	Chain	Res	Type	Clashes	Symm-Clashes
3	B	1214	EPE	2	0
2	B	1213	MLK	2	0
3	A	1215	EPE	1	0
4	A	1216	EDO	2	0
2	A	1213	MLK	1	0

The following is a two-dimensional graphical depiction of Mogul quality analysis of bond lengths, bond angles, torsion angles, and ring geometry for all instances of the Ligand of Interest. In addition, ligands with molecular weight > 250 and outliers as shown on the validation Tables will also be included. For torsion angles, if less than 5% of the Mogul distribution of torsion angles is within 10 degrees of the torsion angle in question, then that torsion angle is considered an outlier. Any bond that is central to one or more torsion angles identified as an outlier by Mogul will be highlighted in the graph. For rings, the root-mean-square deviation (RMSD) between the ring in question and similar rings identified by Mogul is calculated over all ring torsion angles. If the average RMSD is greater than 60 degrees and the minimal RMSD between the ring in question and any Mogul-identified rings is also greater than 60 degrees, then that ring is considered an outlier. The outliers are highlighted in purple. The color gray indicates Mogul did not find sufficient



equivalents in the CSD to analyse the geometry.



## 5.7 Other polymers [i](#)

There are no such residues in this entry.

## 5.8 Polymer linkage issues

There are no chain breaks in this entry.

## 6 Fit of model and data

### 6.1 Protein, DNA and RNA chains

In the following table, the column labelled ‘#RSRZ > 2’ contains the number (and percentage) of RSRZ outliers, followed by percent RSRZ outliers for the chain as percentile scores relative to all X-ray entries and entries of similar resolution. The OWAB column contains the minimum, median, 95<sup>th</sup> percentile and maximum values of the occupancy-weighted average B-factor per residue. The column labelled ‘Q < 0.9’ lists the number of (and percentage) of residues with an average occupancy less than 0.9.

Mol	Chain	Analysed	<RSRZ>	#RSRZ>2	OWAB(Å <sup>2</sup> )	Q<0.9
1	A	210/218 (96%)	0.14	10 (4%) 30 34	16, 22, 47, 94	0
1	B	210/218 (96%)	0.26	12 (5%) 23 26	17, 23, 52, 94	0
All	All	420/436 (96%)	0.20	22 (5%) 27 30	16, 23, 51, 94	0

All (22) RSRZ outliers are listed below:

Mol	Chain	Res	Type	RSRZ
1	A	102	SER	7.2
1	B	102	SER	7.0
1	B	103	SER	6.6
1	A	103	SER	6.2
1	A	100	ASP	5.3
1	A	101	GLU	4.8
1	B	101	GLU	4.6
1	B	212	SER	3.8
1	B	105	PRO	3.3
1	A	99	ASP	3.1
1	A	104	GLU	2.8
1	B	48	ARG	2.5
1	B	72	ASP	2.5
1	A	194	CYS	2.5
1	B	100	ASP	2.5
1	A	212	SER	2.4
1	B	16	ASP	2.4
1	A	136	TYR	2.3
1	A	105	PRO	2.2
1	B	136	TYR	2.2
1	B	99	ASP	2.1
1	B	73	GLN	2.0

## 6.2 Non-standard residues in protein, DNA, RNA chains [i](#)

There are no non-standard protein/DNA/RNA residues in this entry.

## 6.3 Carbohydrates [i](#)

There are no monosaccharides in this entry.

## 6.4 Ligands [i](#)

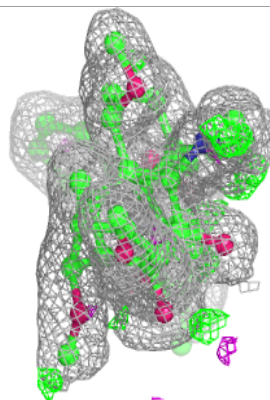
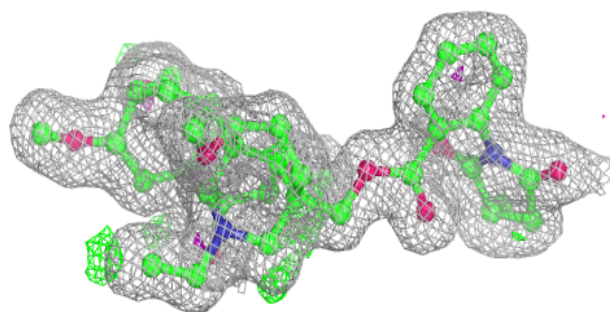
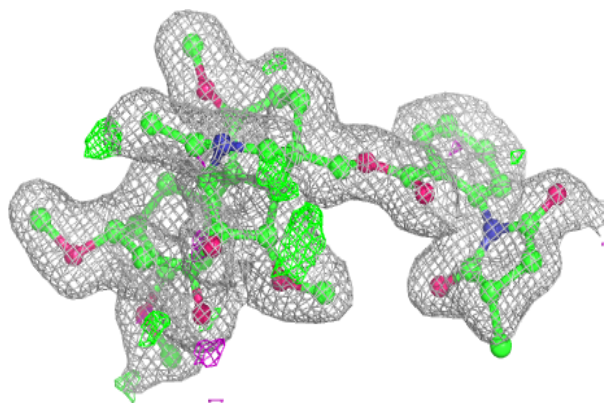
In the following table, the Atoms column lists the number of modelled atoms in the group and the number defined in the chemical component dictionary. The B-factors column lists the minimum, median, 95<sup>th</sup> percentile and maximum values of B factors of atoms in the group. The column labelled 'Q< 0.9' lists the number of atoms with occupancy less than 0.9.

Mol	Type	Chain	Res	Atoms	RSCC	RSR	B-factors( $\text{\AA}^2$ )	Q<0.9
4	EDO	B	1215	4/4	0.54	0.24	35,44,49,51	0
3	EPE	B	1216	15/15	0.71	0.25	46,50,85,88	0
4	EDO	A	1216	4/4	0.75	0.19	36,40,42,46	0
3	EPE	A	1215	15/15	0.81	0.20	29,45,72,76	0
6	NAG	A	2214	14/15	0.84	0.12	27,33,40,44	0
3	EPE	B	1214	15/15	0.86	0.17	26,51,64,65	0
2	MLK	B	1213	49/49	0.91	0.10	13,20,37,43	0
3	EPE	A	1214	15/15	0.91	0.13	25,41,52,52	0
2	MLK	A	1213	49/49	0.92	0.10	13,19,35,40	0
6	NAG	B	2214	14/15	0.92	0.11	28,36,39,44	0
6	NAG	A	2215	14/15	0.94	0.08	17,23,33,37	0
6	NAG	B	2215	14/15	0.95	0.08	16,24,35,39	0
4	EDO	A	1217	4/4	0.96	0.12	36,41,43,50	0
5	NA	A	1218	1/1	0.97	0.14	32,32,32,32	0
5	NA	B	1217	1/1	0.98	0.09	27,27,27,27	0

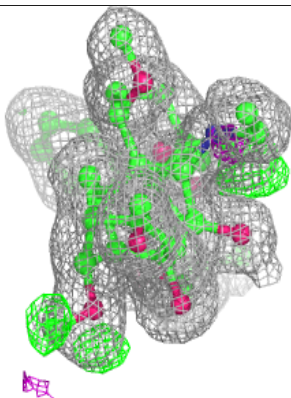
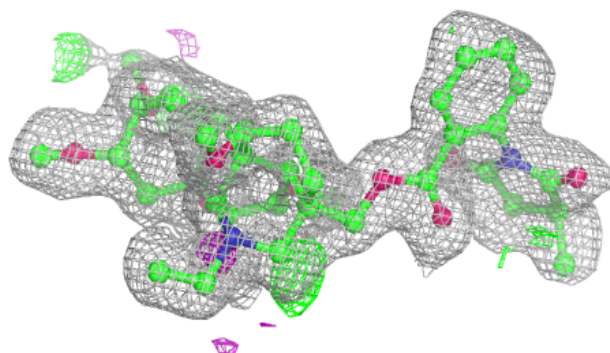
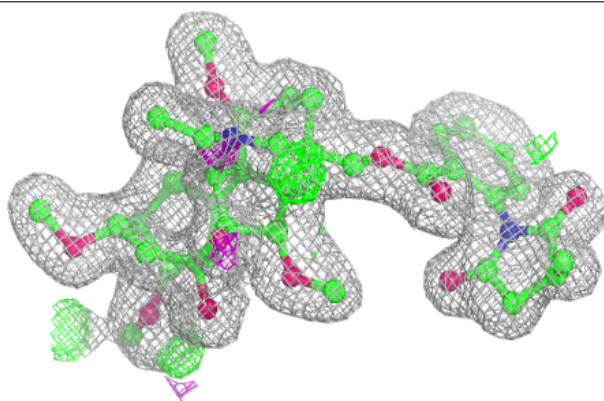
The following is a graphical depiction of the model fit to experimental electron density of all instances of the Ligand of Interest. In addition, ligands with molecular weight > 250 and outliers as shown on the geometry validation Tables will also be included. Each fit is shown from different orientation to approximate a three-dimensional view.

**Electron density around MLK B 1213:**

$2mF_o-DF_c$  (at 0.7 rmsd) in gray  
 $mF_o-DF_c$  (at 3 rmsd) in purple (negative)  
and green (positive)

**Electron density around MLK A 1213:**

$2mF_o-DF_c$  (at 0.7 rmsd) in gray  
 $mF_o-DF_c$  (at 3 rmsd) in purple (negative)  
and green (positive)



## 6.5 Other polymers [i](#)

There are no such residues in this entry.