



Full wwPDB X-ray Structure Validation Report ⓘ

May 13, 2020 – 01:41 pm BST

PDB ID : 4UPS
Title : Structure of bovine endothelial nitric oxide synthase heme domain in complex with N-[3-({(3S,5S)-5-{{(3-{{(Z)-imino(thiophen-2-yl)methyl}amino}benzyl)oxy)methyl}pyrrolidin-3-yl]oxy}methyl) phenyl]thiophene-2-carboximidamide
Authors : Li, H.; Poulos, T.L.
Deposited on : 2014-06-17
Resolution : 1.95 Å(reported)

This is a Full wwPDB X-ray Structure Validation Report for a publicly released PDB entry.

We welcome your comments at validation@mail.wwpdb.org

A user guide is available at

<https://www.wwpdb.org/validation/2017/XrayValidationReportHelp>

with specific help available everywhere you see the ⓘ symbol.

The following versions of software and data (see [references ⓘ](#)) were used in the production of this report:

MolProbity : 4.02b-467
Mogul : 1.8.5 (274361), CSD as541be (2020)
Xtriage (Phenix) : 1.13
EDS : 2.11
buster-report : 1.1.7 (2018)
Percentile statistics : 20191225.v01 (using entries in the PDB archive December 25th 2019)
Refmac : 5.8.0158
CCP4 : 7.0.044 (Gargrove)
Ideal geometry (proteins) : Engh & Huber (2001)
Ideal geometry (DNA, RNA) : Parkinson et al. (1996)
Validation Pipeline (wwPDB-VP) : 2.11

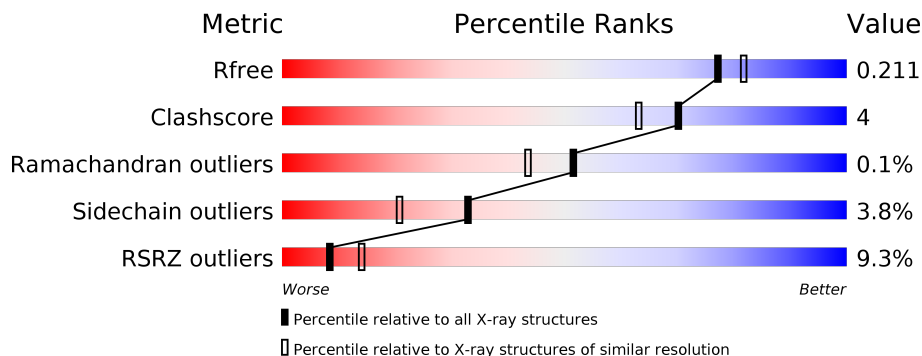
1 Overall quality at a glance

The following experimental techniques were used to determine the structure:

X-RAY DIFFRACTION

The reported resolution of this entry is 1.95 Å.

Percentile scores (ranging between 0-100) for global validation metrics of the entry are shown in the following graphic. The table shows the number of entries on which the scores are based.



Metric	Whole archive (#Entries)	Similar resolution (#Entries, resolution range(Å))
R_{free}	130704	2580 (1.96-1.96)
Clashscore	141614	2705 (1.96-1.96)
Ramachandran outliers	138981	2678 (1.96-1.96)
Sidechain outliers	138945	2678 (1.96-1.96)
RSRZ outliers	127900	2539 (1.96-1.96)

The table below summarises the geometric issues observed across the polymeric chains and their fit to the electron density. The red, orange, yellow and green segments on the lower bar indicate the fraction of residues that contain outliers for ≥ 3 , 2, 1 and 0 types of geometric quality criteria respectively. A grey segment represents the fraction of residues that are not modelled. The numeric value for each fraction is indicated below the corresponding segment, with a dot representing fractions $\leq 5\%$. The upper red bar (where present) indicates the fraction of residues that have poor fit to the electron density. The numeric value is given above the bar.

Mol	Chain	Length	Quality of chain
1	A	443	 9% 82% 8% • 9%
1	B	443	 8% 84% 6% • 9%

2 Entry composition [i](#)

There are 8 unique types of molecules in this entry. The entry contains 6992 atoms, of which 0 are hydrogens and 0 are deuteriums.

In the tables below, the ZeroOcc column contains the number of atoms modelled with zero occupancy, the AltConf column contains the number of residues with at least one atom in alternate conformation and the Trace column contains the number of residues modelled with at most 2 atoms.

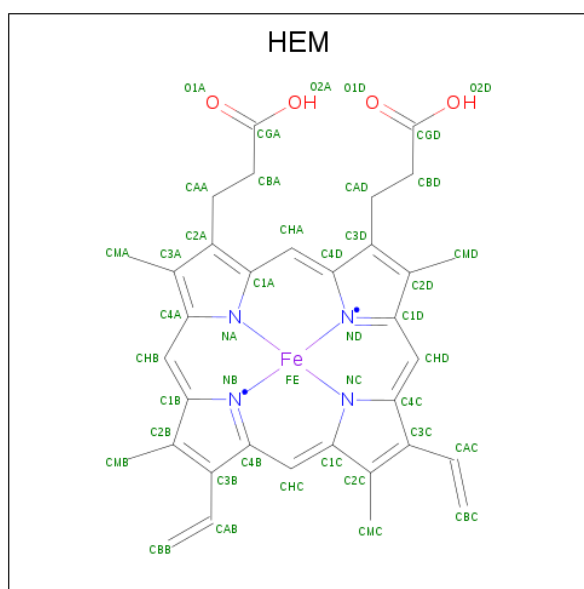
- Molecule 1 is a protein called NITRIC OXIDE SYNTHASE, ENDOTHELIAL.

Mol	Chain	Residues	Atoms					ZeroOcc	AltConf	Trace	
			Total	As	C	N	O				S
1	A	404	3220	1	2048	564	591	16	0	2	0
1	B	402	3201	1	2036	562	586	16	0	0	0

There are 2 discrepancies between the modelled and reference sequences:

Chain	Residue	Modelled	Actual	Comment	Reference
A	100	ARG	CYS	conflict	UNP P29473
B	100	ARG	CYS	conflict	UNP P29473

- Molecule 2 is PROTOPORPHYRIN IX CONTAINING FE (three-letter code: HEM) (formula: $C_{34}H_{32}FeN_4O_4$).



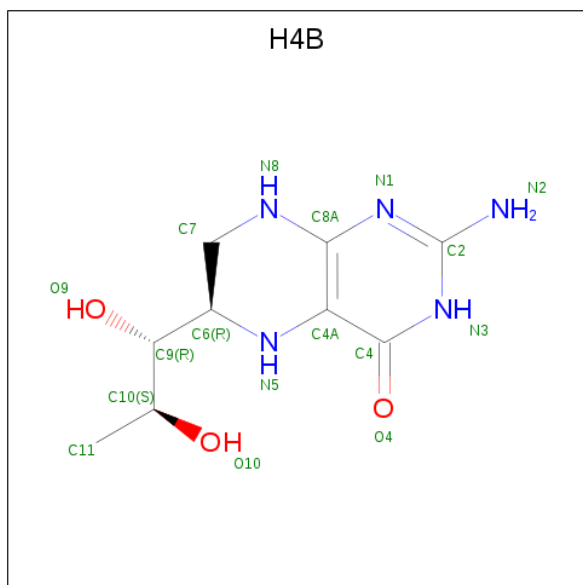
Mol	Chain	Residues	Atoms				ZeroOcc	AltConf	
			Total	C	Fe	N			O
2	A	1	43	34	1	4	4	0	0

Continued on next page...

Continued from previous page...

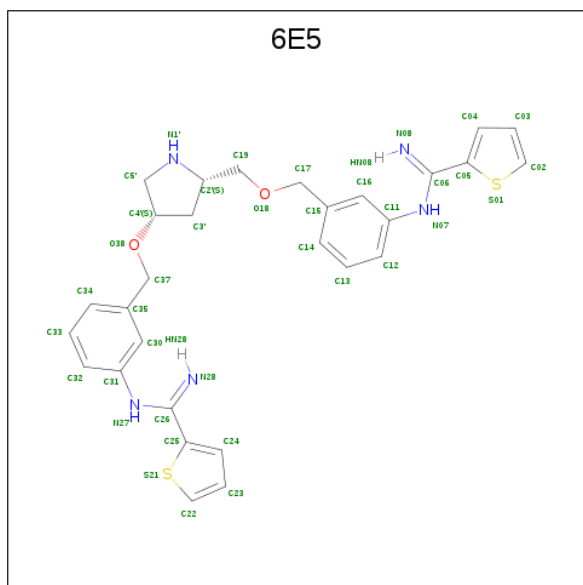
Mol	Chain	Residues	Atoms				ZeroOcc	AltConf	
			Total	C	Fe	N			O
2	B	1	43	34	1	4	4	0	0

- Molecule 3 is 5,6,7,8-TETRAHYDROBIOPTERIN (three-letter code: H4B) (formula: $C_9H_{15}N_5O_3$).



Mol	Chain	Residues	Atoms				ZeroOcc	AltConf
			Total	C	N	O		
3	A	1	17	9	5	3	0	0
3	B	1	17	9	5	3	0	0

- Molecule 4 is N-[3-({[(3S,5S)-5-{{(3-{{(Z)-imino(thiophen-2-yl)methyl}amino}benzyl)oxy}methyl}pyrrolidin-3-yl]oxy}methyl)phenyl]thiophene-2-carboximidamide (three-letter code: 6E5) (formula: $C_{29}H_{31}N_5O_2S_2$).



Mol	Chain	Residues	Atoms					ZeroOcc	AltConf
4	A	1	Total	C	N	O	S	0	0
			38	29	5	2	2		
4	B	1	Total	C	N	O	S	0	0
			38	29	5	2	2		

- Molecule 5 is ACETATE ION (three-letter code: ACT) (formula: $C_2H_3O_2$).



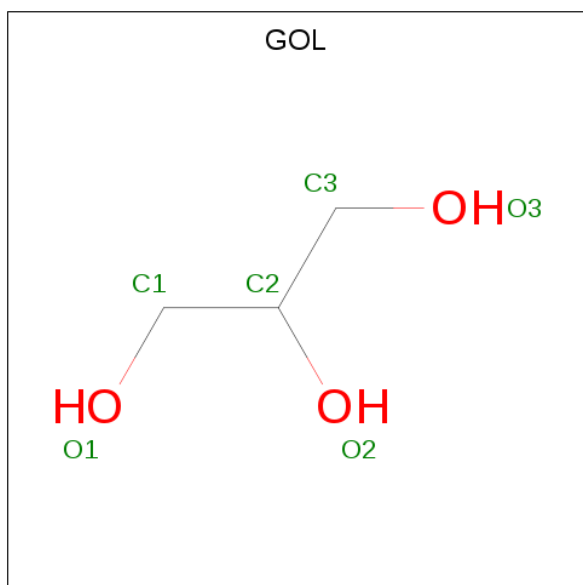
Mol	Chain	Residues	Atoms			ZeroOcc	AltConf
5	A	1	Total	C	O	0	0
			4	2	2		
5	A	1	Total	C	O	0	0
			4	2	2		

Continued on next page...

Continued from previous page...

Mol	Chain	Residues	Atoms	ZeroOcc	AltConf
5	B	1	Total C O 4 2 2	0	0
5	B	1	Total C O 4 2 2	0	0

- Molecule 6 is GLYCEROL (three-letter code: GOL) (formula: C₃H₈O₃).



Mol	Chain	Residues	Atoms	ZeroOcc	AltConf
6	A	1	Total C O 6 3 3	0	0
6	B	1	Total C O 6 3 3	0	0

- Molecule 7 is ZINC ION (three-letter code: ZN) (formula: Zn).

Mol	Chain	Residues	Atoms	ZeroOcc	AltConf
7	A	1	Total Zn 1 1	0	0

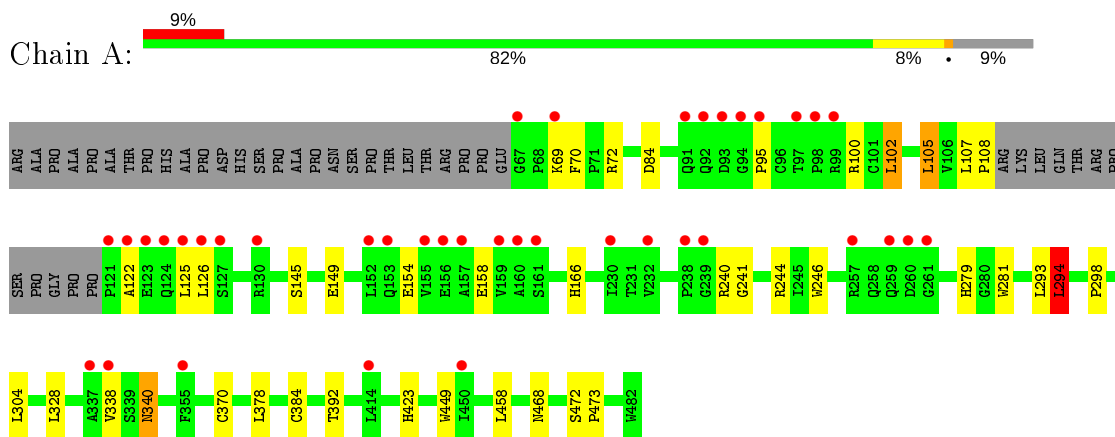
- Molecule 8 is water.

Mol	Chain	Residues	Atoms	ZeroOcc	AltConf
8	A	193	Total O 193 193	0	0
8	B	153	Total O 153 153	0	0

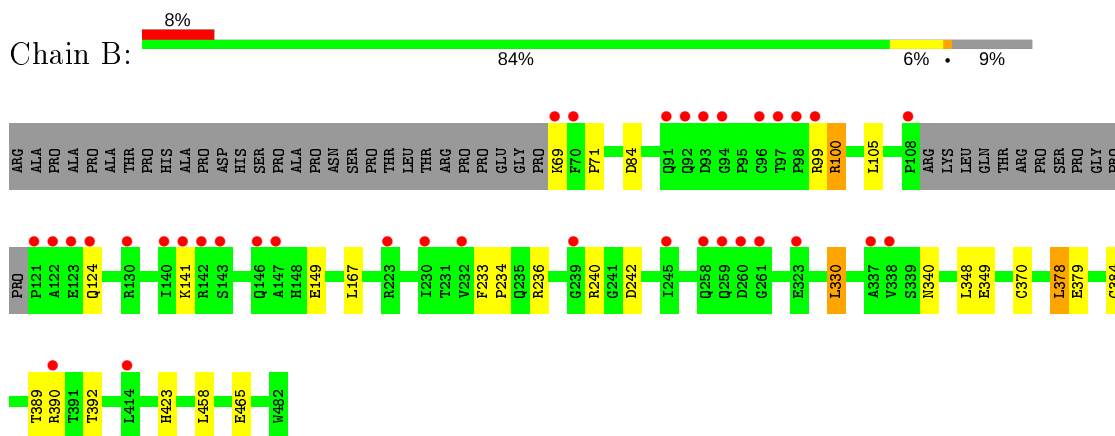
3 Residue-property plots [i](#)

These plots are drawn for all protein, RNA and DNA chains in the entry. The first graphic for a chain summarises the proportions of the various outlier classes displayed in the second graphic. The second graphic shows the sequence view annotated by issues in geometry and electron density. Residues are color-coded according to the number of geometric quality criteria for which they contain at least one outlier: green = 0, yellow = 1, orange = 2 and red = 3 or more. A red dot above a residue indicates a poor fit to the electron density ($RSRZ > 2$). Stretches of 2 or more consecutive residues without any outlier are shown as a green connector. Residues present in the sample, but not in the model, are shown in grey.

- Molecule 1: NITRIC OXIDE SYNTHASE, ENDOTHELIAL



- Molecule 1: NITRIC OXIDE SYNTHASE, ENDOTHELIAL



4 Data and refinement statistics

Property	Value	Source
Space group	P 21 21 21	Depositor
Cell constants a, b, c, α , β , γ	57.78Å 106.47Å 157.19Å 90.00° 90.00° 90.00°	Depositor
Resolution (Å)	39.33 – 1.95 39.30 – 1.95	Depositor EDS
% Data completeness (in resolution range)	98.6 (39.33-1.95) 98.7 (39.30-1.95)	Depositor EDS
R_{merge}	0.06	Depositor
R_{sym}	(Not available)	Depositor
$\langle I/\sigma(I) \rangle$ ¹	1.70 (at 1.95Å)	Xtrriage
Refinement program	REFMAC 5.7.0029	Depositor
R, R_{free}	0.177 , 0.213 0.176 , 0.211	Depositor DCC
R_{free} test set	3516 reflections (4.98%)	wwPDB-VP
Wilson B-factor (Å ²)	38.6	Xtrriage
Anisotropy	0.336	Xtrriage
Bulk solvent k_{sol} (e/Å ³), B_{sol} (Å ²)	0.36 , 42.4	EDS
L-test for twinning ²	$\langle L \rangle = 0.48$, $\langle L^2 \rangle = 0.31$	Xtrriage
Estimated twinning fraction	No twinning to report.	Xtrriage
F_o, F_c correlation	0.97	EDS
Total number of atoms	6992	wwPDB-VP
Average B, all atoms (Å ²)	44.0	wwPDB-VP

Xtrriage's analysis on translational NCS is as follows: *The largest off-origin peak in the Patterson function is 3.65% of the height of the origin peak. No significant pseudotranslation is detected.*

¹Intensities estimated from amplitudes.

²Theoretical values of $\langle |L| \rangle$, $\langle L^2 \rangle$ for acentric reflections are 0.5, 0.333 respectively for untwinned datasets, and 0.375, 0.2 for perfectly twinned datasets.

5 Model quality [i](#)

5.1 Standard geometry [i](#)

Bond lengths and bond angles in the following residue types are not validated in this section: GOL, ZN, 6E5, H4B, CAS, ACT, HEM

The Z score for a bond length (or angle) is the number of standard deviations the observed value is removed from the expected value. A bond length (or angle) with $|Z| > 5$ is considered an outlier worth inspection. RMSZ is the root-mean-square of all Z scores of the bond lengths (or angles).

Mol	Chain	Bond lengths		Bond angles	
		RMSZ	# Z >5	RMSZ	# Z >5
1	A	0.59	0/3306	0.69	2/4502 (0.0%)
1	B	0.58	0/3280	0.70	2/4466 (0.0%)
All	All	0.58	0/6586	0.69	4/8968 (0.0%)

There are no bond length outliers.

All (4) bond angle outliers are listed below:

Mol	Chain	Res	Type	Atoms	Z	Observed(°)	Ideal(°)
1	B	240	ARG	NE-CZ-NH2	-6.58	117.01	120.30
1	B	240	ARG	NE-CZ-NH1	6.10	123.35	120.30
1	A	294	LEU	CA-CB-CG	5.76	128.55	115.30
1	A	244	ARG	NE-CZ-NH1	5.34	122.97	120.30

There are no chirality outliers.

There are no planarity outliers.

5.2 Too-close contacts [i](#)

In the following table, the Non-H and H(model) columns list the number of non-hydrogen atoms and hydrogen atoms in the chain respectively. The H(added) column lists the number of hydrogen atoms added and optimized by MolProbity. The Clashes column lists the number of clashes within the asymmetric unit, whereas Symm-Clashes lists symmetry related clashes.

Mol	Chain	Non-H	H(model)	H(added)	Clashes	Symm-Clashes
1	A	3220	0	3123	26	0
1	B	3201	0	3104	17	0
2	A	43	0	30	3	0
2	B	43	0	30	3	0
3	A	17	0	15	1	0

Continued on next page...

Continued from previous page...

Mol	Chain	Non-H	H(model)	H(added)	Clashes	Symm-Clashes
3	B	17	0	15	0	0
4	A	38	0	29	1	0
4	B	38	0	29	2	0
5	A	8	0	6	0	0
5	B	8	0	6	0	0
6	A	6	0	8	0	0
6	B	6	0	8	0	0
7	A	1	0	0	0	0
8	A	193	0	0	2	0
8	B	153	0	0	1	0
All	All	6992	0	6403	47	0

The all-atom clashscore is defined as the number of clashes found per 1000 atoms (including hydrogen atoms). The all-atom clashscore for this structure is 4.

All (47) close contacts within the same asymmetric unit are listed below, sorted by their clash magnitude.

Atom-1	Atom-2	Interatomic distance (Å)	Clash overlap (Å)
1:A:384:CAS:SG	1:A:384:CAS:AS	2.49	1.30
1:B:384:CAS:AS	1:B:384:CAS:SG	2.54	1.25
1:A:240:ARG:HD3	1:A:298:PRO:HB3	1.63	0.80
2:A:500:HEM:HBB2	2:A:500:HEM:HHC	1.66	0.75
1:A:95:PRO:HB3	1:A:108:PRO:HB2	1.68	0.74
4:B:800:6E5:H32	4:B:800:6E5:N28	2.11	0.65
1:A:384:CAS:CB	1:A:384:CAS:AS	3.05	0.65
2:B:500:HEM:HHC	2:B:500:HEM:HBB2	1.79	0.65
1:B:71:PRO:HG2	1:B:84:ASP:HB3	1.81	0.63
1:A:240:ARG:HD3	1:A:298:PRO:CB	2.30	0.60
1:B:236:ARG:NH1	1:B:242:ASP:OD1	2.35	0.60
2:A:500:HEM:CBB	2:A:500:HEM:HHC	2.32	0.58
1:B:99:ARG:HG2	1:B:100:ARG:HD2	1.85	0.58
1:B:384:CAS:AS	1:B:384:CAS:CB	3.12	0.57
1:A:378:LEU:HB2	8:A:2140:HOH:O	2.05	0.56
1:A:95:PRO:CB	1:A:108:PRO:HB2	2.37	0.55
1:A:246:TRP:HB2	1:A:294:LEU:HB3	1.87	0.55
1:B:233:PHE:HB3	1:B:234:PRO:CD	2.37	0.54
1:A:102:LEU:HD11	1:B:71:PRO:HB3	1.90	0.53
1:B:384:CAS:CE2	1:B:384:CAS:SG	2.96	0.52
1:A:281:TRP:HB2	1:A:304:LEU:HD21	1.90	0.52
1:A:449:TRP:HA	3:A:600:H4B:N1	2.25	0.51
1:B:236:ARG:HH11	1:B:242:ASP:CG	2.14	0.51

Continued on next page...

Continued from previous page...

Atom-1	Atom-2	Interatomic distance (Å)	Clash overlap (Å)
4:B:800:6E5:C32	4:B:800:6E5:N28	2.73	0.50
1:A:370:CYS:SG	1:A:378:LEU:HD13	2.51	0.50
1:B:167:LEU:HG	1:B:348:LEU:HD12	1.93	0.49
1:A:384:CAS:AS	1:A:384:CAS:HB2	2.73	0.48
1:A:145:SER:O	1:A:149:GLU:HG2	2.13	0.47
1:A:105:LEU:HD22	1:B:465:GLU:HB3	1.96	0.47
1:A:240:ARG:HD2	1:A:241:GLY:O	2.13	0.47
1:B:370:CYS:HB3	1:B:378:LEU:HD22	1.96	0.46
2:B:500:HEM:CMC	2:B:500:HEM:HBC2	2.45	0.46
1:A:158:GLU:OE2	1:A:166:HIS:HD2	2.00	0.45
1:A:423:HIS:HB2	1:B:392:THR:HB	2.00	0.44
1:A:392:THR:HB	1:B:423:HIS:HB2	2.00	0.44
1:A:279:HIS:HD2	8:A:2113:HOH:O	2.00	0.44
1:A:472:SER:HA	1:A:473:PRO:C	2.38	0.44
2:B:500:HEM:HHC	2:B:500:HEM:CBB	2.48	0.43
1:B:390:ARG:NH1	1:B:390:ARG:HB2	2.34	0.43
1:B:330:LEU:HB2	8:B:2103:HOH:O	2.18	0.43
1:B:236:ARG:HG3	1:B:349:GLU:O	2.19	0.42
1:A:126:LEU:HA	1:A:126:LEU:HD12	1.80	0.41
1:A:340:ASN:H	1:A:340:ASN:HD22	1.69	0.41
2:A:500:HEM:CHC	2:A:500:HEM:HBB2	2.43	0.41
1:A:338:VAL:HG23	4:A:800:6E5:H04	2.03	0.40
1:A:384:CAS:CE2	1:A:384:CAS:SG	3.09	0.40
1:A:70:PHE:HB3	1:A:84:ASP:O	2.21	0.40

There are no symmetry-related clashes.

5.3 Torsion angles [i](#)

5.3.1 Protein backbone [i](#)

In the following table, the Percentiles column shows the percent Ramachandran outliers of the chain as a percentile score with respect to all X-ray entries followed by that with respect to entries of similar resolution.

The Analysed column shows the number of residues for which the backbone conformation was analysed, and the total number of residues.

Mol	Chain	Analysed	Favoured	Allowed	Outliers	Percentiles
1	A	401/443 (90%)	389 (97%)	11 (3%)	1 (0%)	47 38

Continued on next page...

Continued from previous page...

Mol	Chain	Analysed	Favoured	Allowed	Outliers	Percentiles	
1	B	397/443 (90%)	386 (97%)	11 (3%)	0	100	100
All	All	798/886 (90%)	775 (97%)	22 (3%)	1 (0%)	51	43

All (1) Ramachandran outliers are listed below:

Mol	Chain	Res	Type
1	A	122	ALA

5.3.2 Protein sidechains [i](#)

In the following table, the Percentiles column shows the percent sidechain outliers of the chain as a percentile score with respect to all X-ray entries followed by that with respect to entries of similar resolution.

The Analysed column shows the number of residues for which the sidechain conformation was analysed, and the total number of residues.

Mol	Chain	Analysed	Rotameric	Outliers	Percentiles	
1	A	344/375 (92%)	330 (96%)	14 (4%)	30	18
1	B	341/375 (91%)	329 (96%)	12 (4%)	36	24
All	All	685/750 (91%)	659 (96%)	26 (4%)	33	21

All (26) residues with a non-rotameric sidechain are listed below:

Mol	Chain	Res	Type
1	A	69	LYS
1	A	72	ARG
1	A	100	ARG
1	A	102	LEU
1	A	105	LEU
1	A	107	LEU
1	A	125	LEU
1	A	154	GLU
1	A	293	LEU
1	A	294	LEU
1	A	328	LEU
1	A	340	ASN
1	A	458	LEU
1	A	468	ASN
1	B	69	LYS

Continued on next page...

Continued from previous page...

Mol	Chain	Res	Type
1	B	100	ARG
1	B	105	LEU
1	B	124	GLN
1	B	141	LYS
1	B	149	GLU
1	B	330	LEU
1	B	340	ASN
1	B	378	LEU
1	B	379	GLU
1	B	389	THR
1	B	458	LEU

Some sidechains can be flipped to improve hydrogen bonding and reduce clashes. All (11) such sidechains are listed below:

Mol	Chain	Res	Type
1	A	166	HIS
1	A	191	GLN
1	A	376	ASN
1	A	413	GLN
1	A	468	ASN
1	B	178	GLN
1	B	222	ASN
1	B	225	ASN
1	B	340	ASN
1	B	376	ASN
1	B	405	ASN

5.3.3 RNA [i](#)

There are no RNA molecules in this entry.

5.4 Non-standard residues in protein, DNA, RNA chains [i](#)

2 non-standard protein/DNA/RNA residues are modelled in this entry.

In the following table, the Counts columns list the number of bonds (or angles) for which Mogul statistics could be retrieved, the number of bonds (or angles) that are observed in the model and the number of bonds (or angles) that are defined in the Chemical Component Dictionary. The Link column lists molecule types, if any, to which the group is linked. The Z score for a bond length (or angle) is the number of standard deviations the observed value is removed from the

expected value. A bond length (or angle) with $|Z| > 2$ is considered an outlier worth inspection. RMSZ is the root-mean-square of all Z scores of the bond lengths (or angles).

Mol	Type	Chain	Res	Link	Bond lengths			Bond angles		
					Counts	RMSZ	# $ Z > 2$	Counts	RMSZ	# $ Z > 2$
1	CAS	A	384	1	5,8,9	1.05	0	1,9,11	0.16	0
1	CAS	B	384	1	5,8,9	1.30	0	1,9,11	0.33	0

In the following table, the Chirals column lists the number of chiral outliers, the number of chiral centers analysed, the number of these observed in the model and the number defined in the Chemical Component Dictionary. Similar counts are reported in the Torsion and Rings columns. '-' means no outliers of that kind were identified.

Mol	Type	Chain	Res	Link	Chirals	Torsions	Rings
1	CAS	A	384	1	-	0/0/7/9	-
1	CAS	B	384	1	-	0/0/7/9	-

There are no bond length outliers.

There are no bond angle outliers.

There are no chirality outliers.

There are no torsion outliers.

There are no ring outliers.

2 monomers are involved in 7 short contacts:

Mol	Chain	Res	Type	Clashes	Symm-Clashes
1	A	384	CAS	4	0
1	B	384	CAS	3	0

5.5 Carbohydrates [i](#)

There are no carbohydrates in this entry.

5.6 Ligand geometry [i](#)

Of 13 ligands modelled in this entry, 1 is monoatomic - leaving 12 for Mogul analysis.

In the following table, the Counts columns list the number of bonds (or angles) for which Mogul statistics could be retrieved, the number of bonds (or angles) that are observed in the model and the number of bonds (or angles) that are defined in the Chemical Component Dictionary. The Link column lists molecule types, if any, to which the group is linked. The Z score for a bond length (or angle) is the number of standard deviations the observed value is removed from the

expected value. A bond length (or angle) with $|Z| > 2$ is considered an outlier worth inspection. RMSZ is the root-mean-square of all Z scores of the bond lengths (or angles).

Mol	Type	Chain	Res	Link	Bond lengths			Bond angles		
					Counts	RMSZ	# $ Z > 2$	Counts	RMSZ	# $ Z > 2$
5	ACT	B	861	-	1,3,3	1.66	0	0,3,3	0.00	-
4	6E5	B	800	-	40,42,42	1.35	5 (12%)	36,56,56	2.16	3 (8%)
3	H4B	A	600	-	16,18,18	0.89	0	11,26,26	2.98	6 (54%)
5	ACT	A	860	-	1,3,3	1.70	0	0,3,3	0.00	-
5	ACT	B	860	-	1,3,3	2.22	1 (100%)	0,3,3	0.00	-
6	GOL	B	880	-	5,5,5	0.27	0	5,5,5	0.37	0
6	GOL	A	880	-	5,5,5	0.43	0	5,5,5	0.39	0
3	H4B	B	600	-	16,18,18	1.38	2 (12%)	11,26,26	2.58	5 (45%)
2	HEM	B	500	1	27,50,50	0.94	1 (3%)	17,82,82	1.46	3 (17%)
2	HEM	A	500	1	27,50,50	0.94	1 (3%)	17,82,82	1.36	2 (11%)
4	6E5	A	800	-	40,42,42	1.36	6 (15%)	36,56,56	2.12	5 (13%)
5	ACT	A	861	-	1,3,3	2.58	1 (100%)	0,3,3	0.00	-

In the following table, the Chirals column lists the number of chiral outliers, the number of chiral centers analysed, the number of these observed in the model and the number defined in the Chemical Component Dictionary. Similar counts are reported in the Torsion and Rings columns. '-' means no outliers of that kind were identified.

Mol	Type	Chain	Res	Link	Chirals	Torsions	Rings
4	6E5	B	800	-	-	3/19/36/36	0/5/5/5
3	H4B	A	600	-	-	0/8/17/17	0/2/2/2
6	GOL	B	880	-	-	0/4/4/4	-
6	GOL	A	880	-	-	2/4/4/4	-
3	H4B	B	600	-	-	0/8/17/17	0/2/2/2
2	HEM	B	500	1	-	0/6/54/54	-
2	HEM	A	500	1	-	0/6/54/54	-
4	6E5	A	800	-	-	9/19/36/36	0/5/5/5

All (17) bond length outliers are listed below:

Mol	Chain	Res	Type	Atoms	Z	Observed(Å)	Ideal(Å)
4	B	800	6E5	C25-C26	4.11	1.51	1.45
3	B	600	H4B	C7-C6	3.82	1.55	1.52
4	A	800	6E5	C25-C26	3.68	1.50	1.45
4	A	800	6E5	C06-N07	-3.27	1.32	1.39
4	B	800	6E5	C05-C06	3.16	1.50	1.45
4	A	800	6E5	C05-C06	3.10	1.50	1.45

Continued on next page...

Continued from previous page...

Mol	Chain	Res	Type	Atoms	Z	Observed(Å)	Ideal(Å)
4	B	800	6E5	C06-N07	-3.03	1.32	1.39
2	B	500	HEM	C4D-C3D	2.87	1.49	1.42
4	B	800	6E5	C11-N07	-2.60	1.36	1.41
5	A	861	ACT	CH3-C	2.58	1.52	1.48
4	A	800	6E5	C31-N27	-2.48	1.36	1.41
4	B	800	6E5	C03-C02	2.44	1.41	1.34
4	A	800	6E5	C26-N27	-2.26	1.34	1.39
5	B	860	ACT	CH3-C	2.22	1.51	1.48
2	A	500	HEM	C4D-C3D	2.21	1.47	1.42
3	B	600	H4B	C4-N3	2.10	1.36	1.33
4	A	800	6E5	C03-C02	2.06	1.40	1.34

All (24) bond angle outliers are listed below:

Mol	Chain	Res	Type	Atoms	Z	Observed(°)	Ideal(°)
4	A	800	6E5	C23-C22-S21	-8.31	106.23	112.98
4	B	800	6E5	C23-C22-S21	-8.26	106.28	112.98
4	B	800	6E5	C03-C02-S01	-7.97	106.51	112.98
4	A	800	6E5	C03-C02-S01	-7.13	107.19	112.98
3	A	600	H4B	C4-C4A-C8A	5.41	119.38	114.57
3	A	600	H4B	C4-C4A-N5	4.94	123.27	119.12
3	B	600	H4B	C4-C4A-N5	4.89	123.22	119.12
3	A	600	H4B	C4-N3-C2	3.89	122.11	115.93
4	A	800	6E5	C3'-C4'-C5'	3.48	106.77	103.65
3	B	600	H4B	C4-C4A-C8A	3.47	117.66	114.57
2	B	500	HEM	CBA-CAA-C2A	-3.42	106.17	112.49
3	B	600	H4B	C2-N1-C8A	3.28	121.89	114.54
3	B	600	H4B	N2-C2-N3	3.20	122.22	117.25
3	A	600	H4B	N3-C2-N1	-3.19	120.42	125.42
3	B	600	H4B	N3-C2-N1	-3.12	120.52	125.42
4	B	800	6E5	C3'-C4'-C5'	2.94	106.29	103.65
2	A	500	HEM	CBA-CAA-C2A	-2.94	107.06	112.49
2	B	500	HEM	CAA-CBA-CGA	2.82	117.41	112.67
3	A	600	H4B	C2-N1-C8A	2.54	120.23	114.54
4	A	800	6E5	O38-C37-C35	2.46	115.57	109.91
4	A	800	6E5	C31-N27-C26	-2.32	122.82	128.49
2	A	500	HEM	CMA-C3A-C4A	-2.26	124.98	128.46
3	A	600	H4B	C4A-C4-N3	-2.18	117.80	124.01
2	B	500	HEM	C4A-C3A-C2A	2.02	108.40	107.00

There are no chirality outliers.

All (14) torsion outliers are listed below:

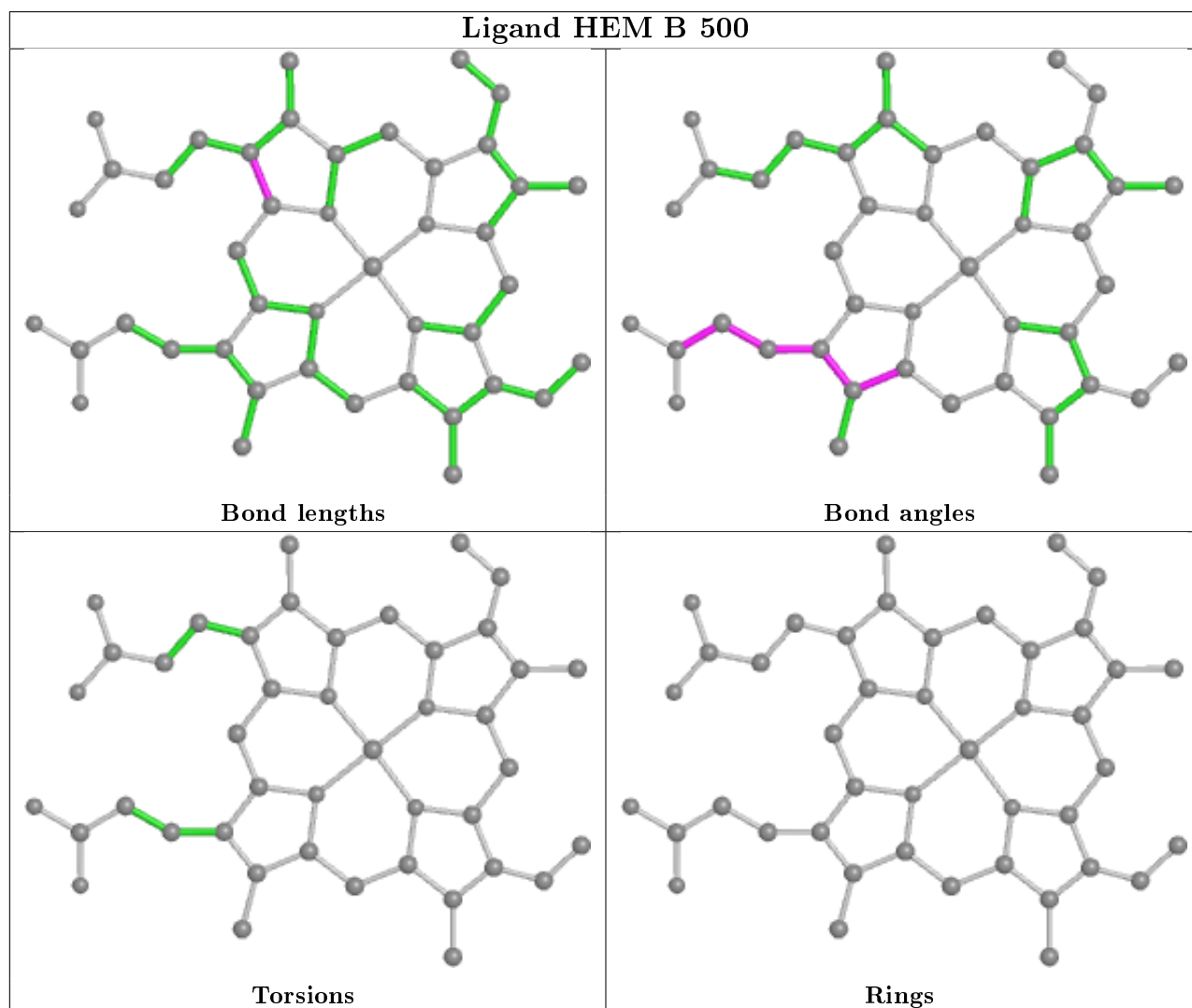
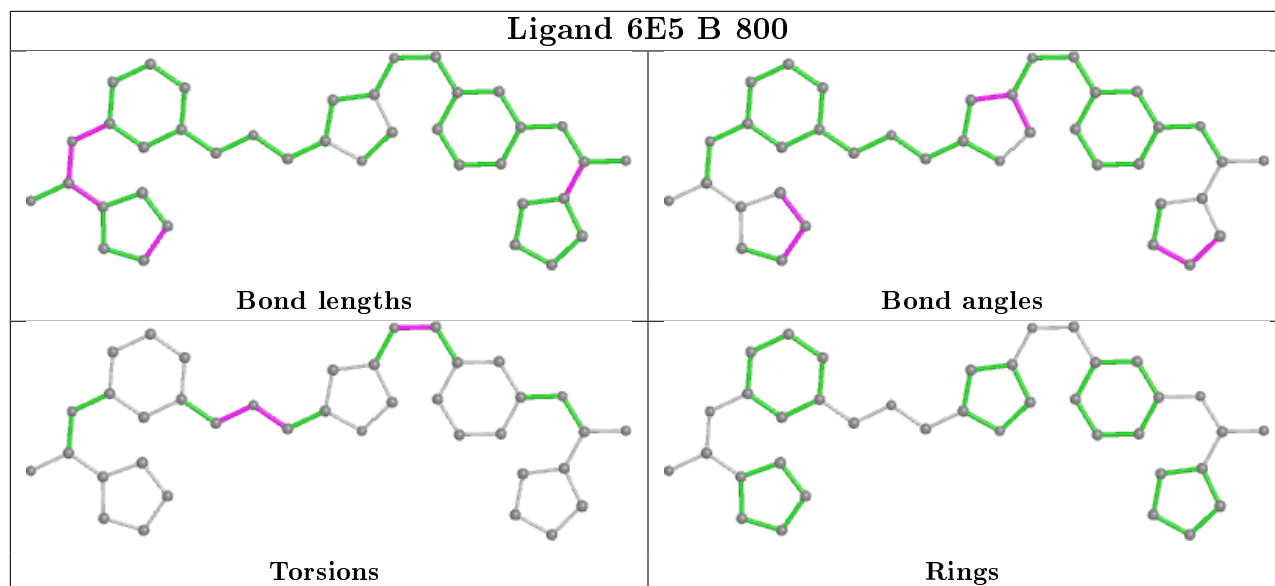
Mol	Chain	Res	Type	Atoms
6	A	880	GOL	C1-C2-C3-O3
4	A	800	6E5	O18-C19-C2'-N1'
4	A	800	6E5	O18-C19-C2'-C3'
4	A	800	6E5	C2'-C19-O18-C17
4	A	800	6E5	C35-C37-O38-C4'
4	B	800	6E5	C2'-C19-O18-C17
4	A	800	6E5	C25-C26-N27-C31
4	B	800	6E5	C35-C37-O38-C4'
4	A	800	6E5	N28-C26-N27-C31
6	A	880	GOL	O2-C2-C3-O3
4	A	800	6E5	C32-C31-N27-C26
4	A	800	6E5	C30-C31-N27-C26
4	B	800	6E5	C15-C17-O18-C19
4	A	800	6E5	C15-C17-O18-C19

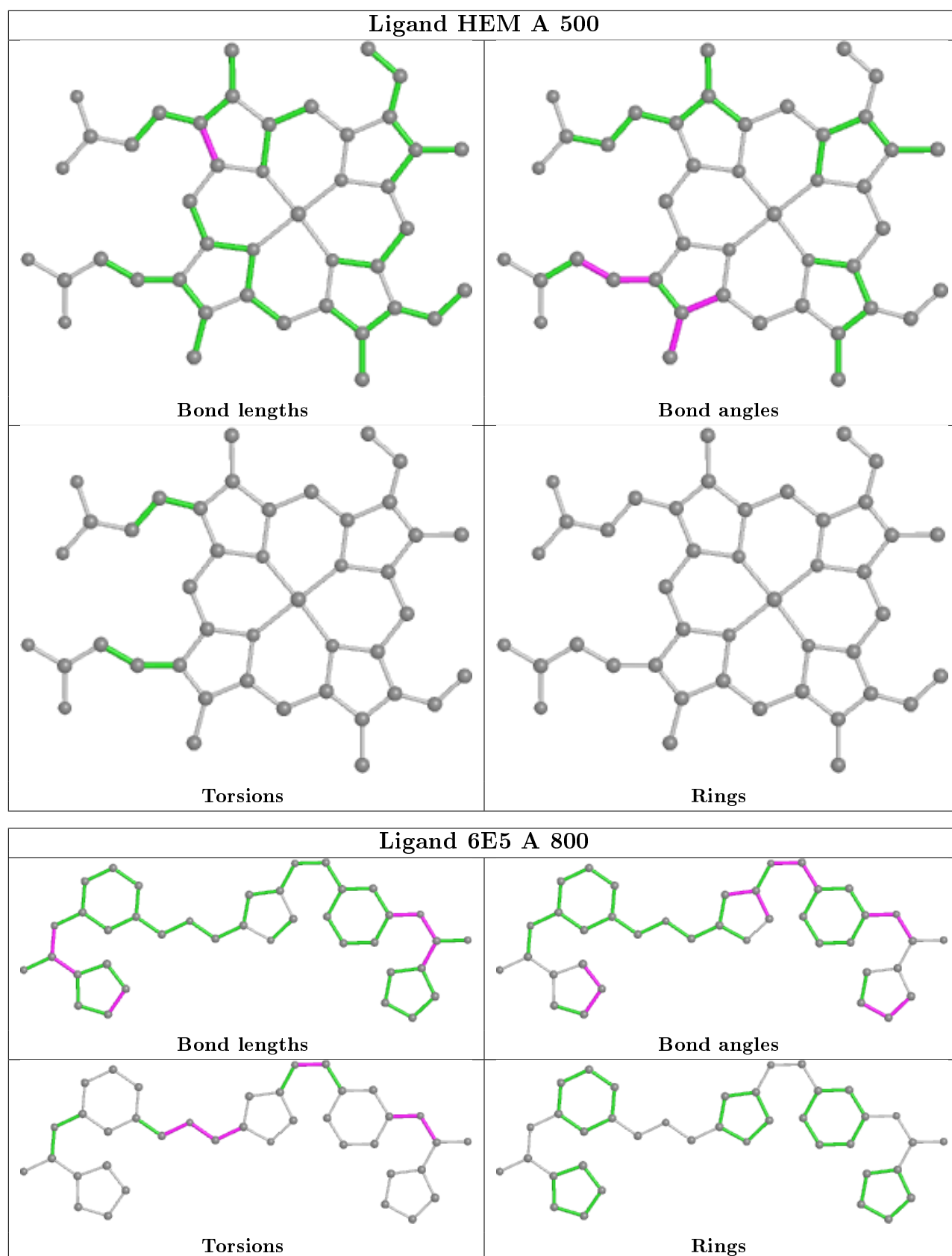
There are no ring outliers.

5 monomers are involved in 10 short contacts:

Mol	Chain	Res	Type	Clashes	Symm-Clashes
4	B	800	6E5	2	0
3	A	600	H4B	1	0
2	B	500	HEM	3	0
2	A	500	HEM	3	0
4	A	800	6E5	1	0

The following is a two-dimensional graphical depiction of Mogul quality analysis of bond lengths, bond angles, torsion angles, and ring geometry for all instances of the Ligand of Interest. In addition, ligands with molecular weight > 250 and outliers as shown on the validation Tables will also be included. For torsion angles, if less than 5% of the Mogul distribution of torsion angles is within 10 degrees of the torsion angle in question, then that torsion angle is considered an outlier. Any bond that is central to one or more torsion angles identified as an outlier by Mogul will be highlighted in the graph. For rings, the root-mean-square deviation (RMSD) between the ring in question and similar rings identified by Mogul is calculated over all ring torsion angles. If the average RMSD is greater than 60 degrees and the minimal RMSD between the ring in question and any Mogul-identified rings is also greater than 60 degrees, then that ring is considered an outlier. The outliers are highlighted in purple. The color gray indicates Mogul did not find sufficient equivalents in the CSD to analyse the geometry.





5.7 Other polymers [i](#)

There are no such residues in this entry.

5.8 Polymer linkage issues [i](#)

There are no chain breaks in this entry.

6 Fit of model and data

6.1 Protein, DNA and RNA chains

In the following table, the column labelled ‘#RSRZ> 2’ contains the number (and percentage) of RSRZ outliers, followed by percent RSRZ outliers for the chain as percentile scores relative to all X-ray entries and entries of similar resolution. The OWAB column contains the minimum, median, 95th percentile and maximum values of the occupancy-weighted average B-factor per residue. The column labelled ‘Q< 0.9’ lists the number of (and percentage) of residues with an average occupancy less than 0.9.

Mol	Chain	Analysed	<RSRZ>	#RSRZ>2	OWAB(Å ²)	Q<0.9
1	A	403/443 (90%)	0.52	39 (9%) 7 12	27, 39, 67, 92	0
1	B	401/443 (90%)	0.50	36 (8%) 9 15	28, 42, 74, 108	0
All	All	804/886 (90%)	0.51	75 (9%) 8 14	27, 41, 72, 108	0

All (75) RSRZ outliers are listed below:

Mol	Chain	Res	Type	RSRZ
1	B	259	GLN	8.1
1	B	121	PRO	5.7
1	A	67	GLY	5.5
1	A	69	LYS	5.4
1	A	160	ALA	5.4
1	A	122	ALA	5.2
1	A	121	PRO	5.1
1	A	123	GLU	5.0
1	A	259	GLN	5.0
1	B	122	ALA	4.9
1	A	99	ARG	4.9
1	B	142	ARG	4.9
1	A	239	GLY	4.6
1	B	99	ARG	4.5
1	B	98	PRO	4.5
1	A	91	GLN	4.5
1	B	108	PRO	4.3
1	A	98	PRO	4.2
1	A	238	PRO	4.2
1	A	97	THR	4.1
1	A	124	GLN	4.1
1	B	143	SER	4.0
1	B	146	GLN	4.0
1	A	338	VAL	3.8

Continued on next page...

Continued from previous page...

Mol	Chain	Res	Type	RSRZ
1	B	260	ASP	3.8
1	B	94	GLY	3.8
1	B	69	LYS	3.8
1	A	260	ASP	3.7
1	B	123	GLU	3.6
1	A	159	VAL	3.6
1	A	93	ASP	3.4
1	A	94	GLY	3.3
1	A	126	LEU	3.2
1	A	261	GLY	3.2
1	B	141	LYS	3.2
1	B	91	GLN	3.1
1	B	239	GLY	3.1
1	B	93	ASP	3.1
1	B	96	CYS	3.0
1	B	223	ARG	3.0
1	A	125	LEU	3.0
1	B	258	GLN	3.0
1	A	155	VAL	2.9
1	B	338	VAL	2.9
1	B	92	GLN	2.8
1	B	261	GLY	2.8
1	A	92	GLN	2.7
1	A	230	ILE	2.7
1	B	97	THR	2.7
1	A	127	SER	2.6
1	B	70	PHE	2.6
1	A	257	ARG	2.6
1	A	153	GLN	2.5
1	A	355	PHE	2.5
1	B	147	ALA	2.5
1	A	414	LEU	2.5
1	B	124	GLN	2.4
1	B	414	LEU	2.3
1	A	156	GLU	2.3
1	A	157	ALA	2.3
1	A	337	ALA	2.3
1	A	130	ARG	2.2
1	A	161	SER	2.2
1	A	95	PRO	2.2
1	A	232	VAL	2.1
1	A	152	LEU	2.1

Continued on next page...

Continued from previous page...

Mol	Chain	Res	Type	RSRZ
1	B	323	GLU	2.1
1	B	232	VAL	2.1
1	B	390	ARG	2.1
1	A	450	ILE	2.1
1	B	140	ILE	2.1
1	B	337	ALA	2.1
1	B	230	ILE	2.1
1	B	130	ARG	2.0
1	B	245	ILE	2.0

6.2 Non-standard residues in protein, DNA, RNA chains [i](#)

In the following table, the Atoms column lists the number of modelled atoms in the group and the number defined in the chemical component dictionary. The B-factors column lists the minimum, median, 95th percentile and maximum values of B factors of atoms in the group. The column labelled 'Q< 0.9' lists the number of atoms with occupancy less than 0.9.

Mol	Type	Chain	Res	Atoms	RSCC	RSR	B-factors(Å ²)	Q<0.9
1	CAS	B	384	9/10	0.97	0.09	47,49,65,67	0
1	CAS	A	384	9/10	0.98	0.08	37,38,58,63	0

6.3 Carbohydrates [i](#)

There are no carbohydrates in this entry.

6.4 Ligands [i](#)

In the following table, the Atoms column lists the number of modelled atoms in the group and the number defined in the chemical component dictionary. The B-factors column lists the minimum, median, 95th percentile and maximum values of B factors of atoms in the group. The column labelled 'Q< 0.9' lists the number of atoms with occupancy less than 0.9.

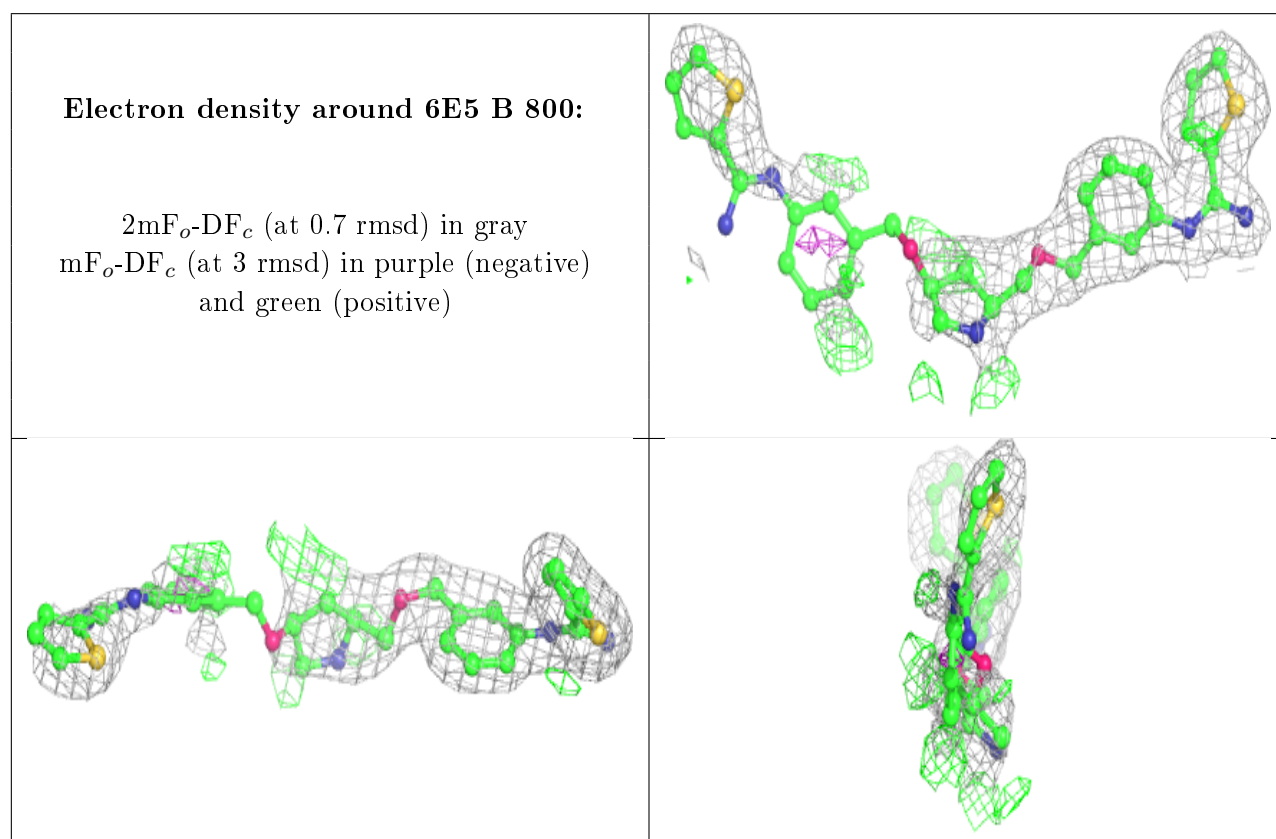
Mol	Type	Chain	Res	Atoms	RSCC	RSR	B-factors(Å ²)	Q<0.9
6	GOL	B	880	6/6	0.86	0.29	65,69,70,72	0
4	6E5	B	800	38/38	0.89	0.27	29,80,119,120	0
5	ACT	B	860	4/4	0.92	0.24	46,47,49,50	0
6	GOL	A	880	6/6	0.92	0.27	58,62,64,67	0
4	6E5	A	800	38/38	0.92	0.24	27,76,117,118	0
5	ACT	A	861	4/4	0.96	0.21	28,32,33,35	0
2	HEM	A	500	43/43	0.97	0.18	25,28,35,38	0

Continued on next page...

Continued from previous page...

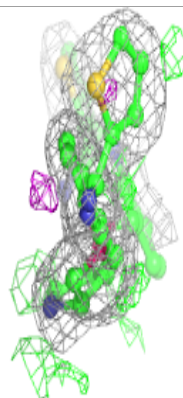
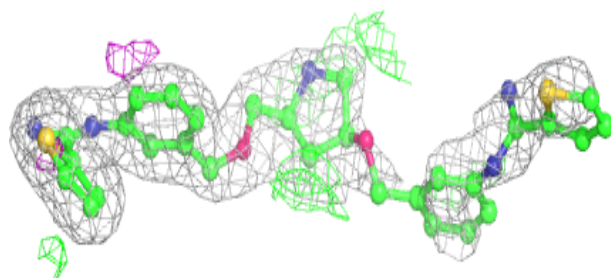
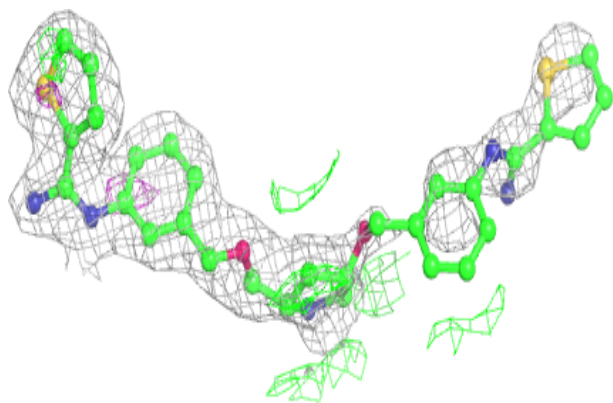
Mol	Type	Chain	Res	Atoms	RSCC	RSR	B-factors(\AA^2)	Q<0.9
5	ACT	A	860	4/4	0.97	0.08	44,47,48,48	0
3	H4B	B	600	17/17	0.97	0.14	30,33,35,35	0
3	H4B	A	600	17/17	0.98	0.18	32,34,37,38	0
5	ACT	B	861	4/4	0.98	0.13	38,38,39,40	0
2	HEM	B	500	43/43	0.98	0.15	27,32,38,41	0
7	ZN	A	1483	1/1	0.99	0.04	50,50,50,50	0

The following is a graphical depiction of the model fit to experimental electron density of all instances of the Ligand of Interest. In addition, ligands with molecular weight > 250 and outliers as shown on the geometry validation Tables will also be included. Each fit is shown from different orientation to approximate a three-dimensional view.



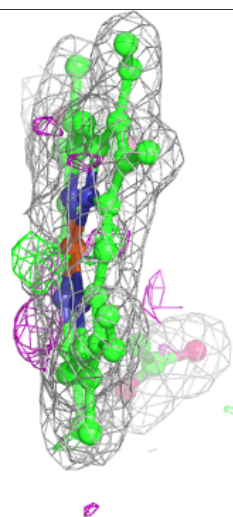
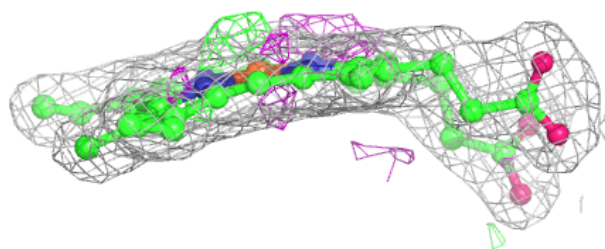
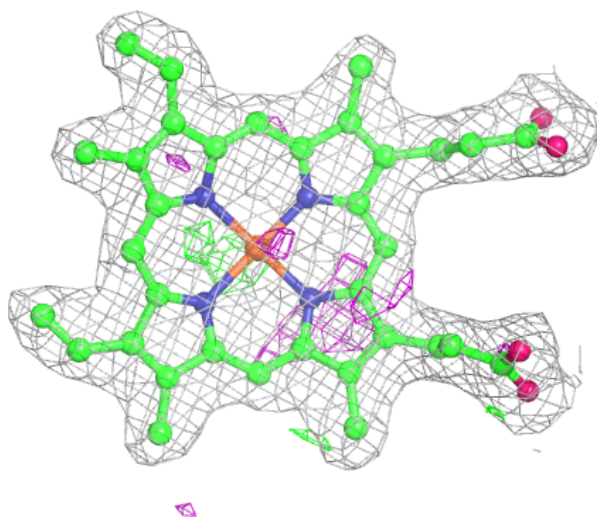
Electron density around 6E5 A 800:

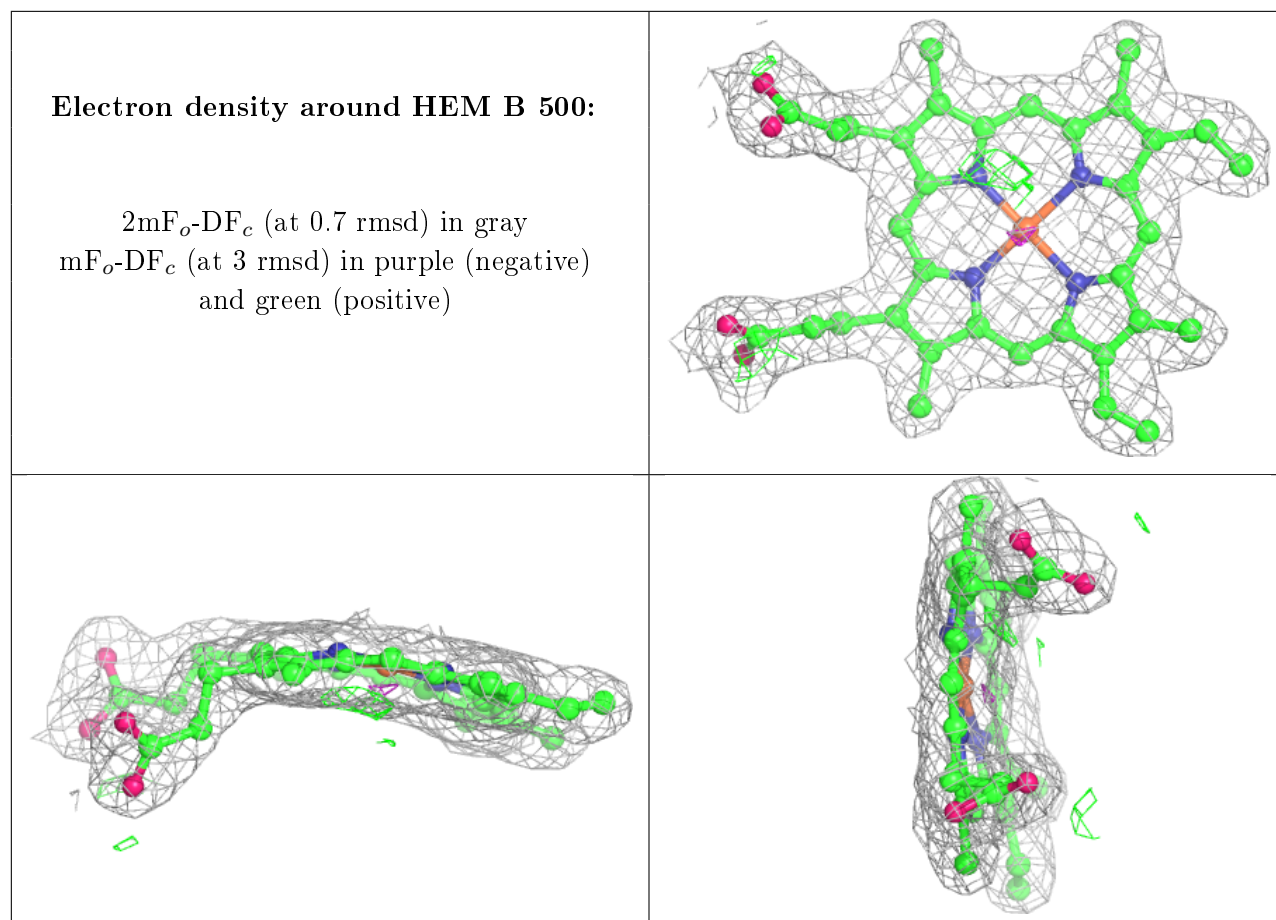
$2mF_o-DF_c$ (at 0.7 rmsd) in gray
 mF_o-DF_c (at 3 rmsd) in purple (negative)
and green (positive)



Electron density around HEM A 500:

$2mF_o-DF_c$ (at 0.7 rmsd) in gray
 mF_o-DF_c (at 3 rmsd) in purple (negative)
and green (positive)





6.5 Other polymers [i](#)

There are no such residues in this entry.