



wwPDB X-ray Structure Validation Summary Report ⓘ

Aug 21, 2020 – 09:33 PM BST

PDB ID : 6ULY
Title : Adenylation domain of a keto acid-selecting NRPS module bound to keto acyl adenylylase space group P212121
Authors : Alonzo, D.A.; Chiche-Lapierre, C.; Schmeing, T.M.
Deposited on : 2019-10-08
Resolution : 2.30 Å (reported)

This is a wwPDB X-ray Structure Validation Summary Report for a publicly released PDB entry.

We welcome your comments at validation@mail.wwpdb.org

A user guide is available at

<https://www.wwpdb.org/validation/2017/XrayValidationReportHelp>

with specific help available everywhere you see the ⓘ symbol.

The following versions of software and data (see [references ⓘ](#)) were used in the production of this report:

MolProbity : 4.02b-467
Mogul : 1.8.5 (274361), CSD as541be (2020)
Xtriage (Phenix) : 1.13
EDS : 2.13.1
buster-report : 1.1.7 (2018)
Percentile statistics : 20191225.v01 (using entries in the PDB archive December 25th 2019)
Refmac : 5.8.0158
CCP4 : 7.0.044 (Gargrove)
Ideal geometry (proteins) : Engh & Huber (2001)
Ideal geometry (DNA, RNA) : Parkinson et al. (1996)
Validation Pipeline (wwPDB-VP) : 2.13.1

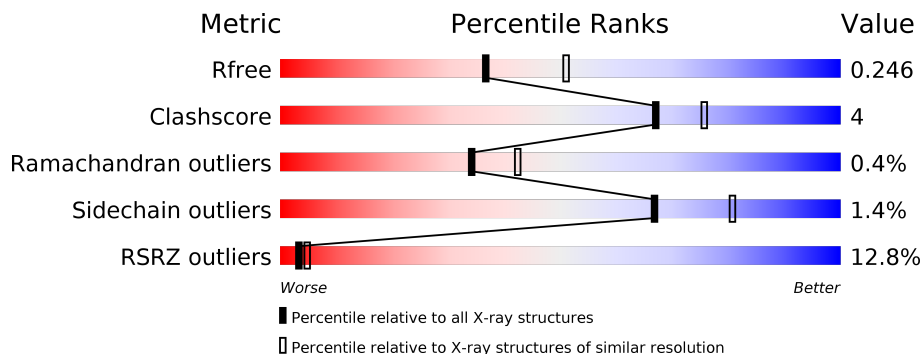
1 Overall quality at a glance

The following experimental techniques were used to determine the structure:

X-RAY DIFFRACTION

The reported resolution of this entry is 2.30 Å.

Percentile scores (ranging between 0-100) for global validation metrics of the entry are shown in the following graphic. The table shows the number of entries on which the scores are based.



Metric	Whole archive (#Entries)	Similar resolution (#Entries, resolution range(Å))
R_{free}	130704	5042 (2.30-2.30)
Clashscore	141614	5643 (2.30-2.30)
Ramachandran outliers	138981	5575 (2.30-2.30)
Sidechain outliers	138945	5575 (2.30-2.30)
RSRZ outliers	127900	4938 (2.30-2.30)

The table below summarises the geometric issues observed across the polymeric chains and their fit to the electron density. The red, orange, yellow and green segments on the lower bar indicate the fraction of residues that contain outliers for ≥ 3 , 2, 1 and 0 types of geometric quality criteria respectively. A grey segment represents the fraction of residues that are not modelled. The numeric value for each fraction is indicated below the corresponding segment, with a dot representing fractions $\leq 5\%$. The upper red bar (where present) indicates the fraction of residues that have poor fit to the electron density. The numeric value is given above the bar.

Mol	Chain	Length	Quality of chain
1	A	576	
1	B	576	

2 Entry composition [i](#)

There are 5 unique types of molecules in this entry. The entry contains 16777 atoms, of which 8101 are hydrogens and 0 are deuteriums.

In the tables below, the ZeroOcc column contains the number of atoms modelled with zero occupancy, the AltConf column contains the number of residues with at least one atom in alternate conformation and the Trace column contains the number of residues modelled with at most 2 atoms.

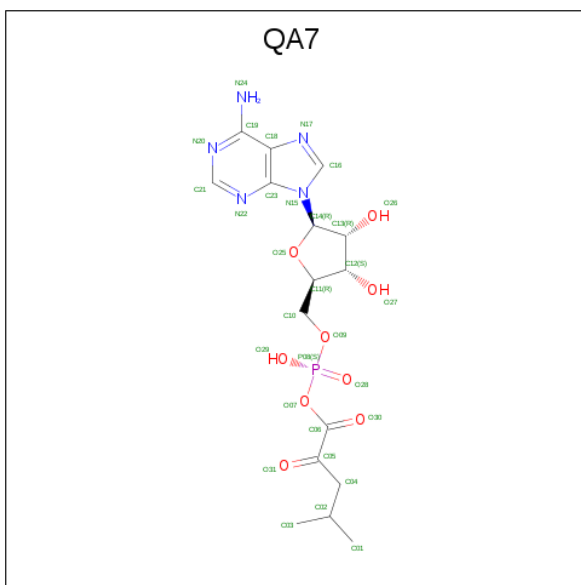
- Molecule 1 is a protein called Amino acid adenylation domain-containing protein.

Mol	Chain	Residues	Atoms						ZeroOcc	AltConf	Trace
			Total	C	H	N	O	S			
1	A	545	8312	2696	4072	730	794	20	0	0	0
1	B	531	8122	2640	3979	708	775	20	0	1	0

There are 18 discrepancies between the modelled and reference sequences:

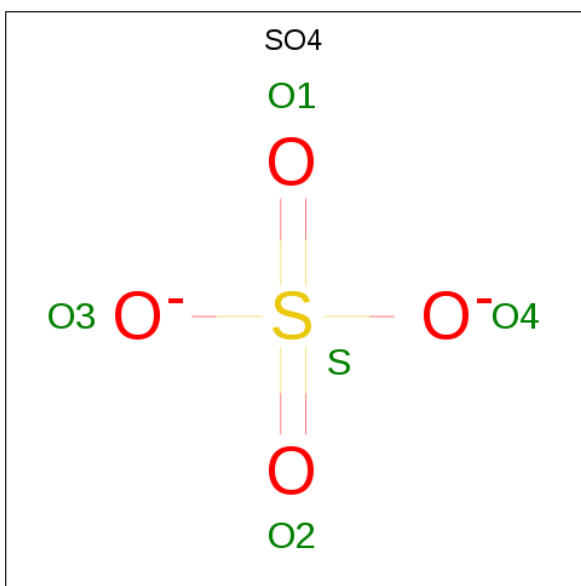
Chain	Residue	Modelled	Actual	Comment	Reference
A	650	ALA	-	expression tag	UNP M5R382
A	651	ALA	-	expression tag	UNP M5R382
A	652	ALA	-	expression tag	UNP M5R382
A	653	GLU	-	expression tag	UNP M5R382
A	654	ASN	-	expression tag	UNP M5R382
A	655	LEU	-	expression tag	UNP M5R382
A	656	TYR	-	expression tag	UNP M5R382
A	657	PHE	-	expression tag	UNP M5R382
A	658	GLN	-	expression tag	UNP M5R382
B	650	ALA	-	expression tag	UNP M5R382
B	651	ALA	-	expression tag	UNP M5R382
B	652	ALA	-	expression tag	UNP M5R382
B	653	GLU	-	expression tag	UNP M5R382
B	654	ASN	-	expression tag	UNP M5R382
B	655	LEU	-	expression tag	UNP M5R382
B	656	TYR	-	expression tag	UNP M5R382
B	657	PHE	-	expression tag	UNP M5R382
B	658	GLN	-	expression tag	UNP M5R382

- Molecule 2 is 5'-O-[(S)-hydroxy[(4-methyl-2-oxopentanoyl)oxy]phosphoryl]adenosine (three-letter code: QA7) (formula: C₁₆H₂₂N₅O₉P) (labeled as "Ligand of Interest" by author).



Mol	Chain	Residues	Atoms					ZeroOcc	AltConf		
			Total	C	H	N	O			P	
2	A	1	Total	52	16	21	5	9	1	0	0
2	B	1	Total	52	16	21	5	9	1	0	0

- Molecule 3 is SULFATE ION (three-letter code: SO4) (formula: O₄S).



Mol	Chain	Residues	Atoms		ZeroOcc	AltConf		
			Total	O S				
3	A	1	Total	5	4	1	0	0
3	A	1	Total	5	4	1	0	0

Continued on next page...

Continued from previous page...

Mol	Chain	Residues	Atoms			ZeroOcc	AltConf
3	A	1	Total	O	S	0	0
			5	4	1		
3	A	1	Total	O	S	0	0
			5	4	1		
3	A	1	Total	O	S	0	0
			5	4	1		
3	A	1	Total	O	S	0	0
			5	4	1		
3	A	1	Total	O	S	0	0
			5	4	1		
3	A	1	Total	O	S	0	0
			5	4	1		
3	A	1	Total	O	S	0	0
			5	4	1		
3	A	1	Total	O	S	0	0
			5	4	1		
3	A	1	Total	O	S	0	0
			5	4	1		
3	B	1	Total	O	S	0	0
			5	4	1		
3	B	1	Total	O	S	0	0
			5	4	1		
3	B	1	Total	O	S	0	0
			5	4	1		
3	B	1	Total	O	S	0	0
			5	4	1		
3	B	1	Total	O	S	0	0
			5	4	1		
3	B	1	Total	O	S	0	0
			5	4	1		

- Molecule 4 is GLYCEROL (three-letter code: GOL) (formula: C₃H₈O₃).



Mol	Chain	Residues	Atoms				ZeroOcc	AltConf
4	B	1	Total	C	H	O	0	0
			14	3	8	3		

- Molecule 5 is water.

Mol	Chain	Residues	Atoms		ZeroOcc	AltConf
5	A	55	Total	O	0	0
			55	55		
5	B	65	Total	O	0	0
			65	65		

4 Data and refinement statistics

Property	Value	Source
Space group	P 21 21 21	Depositor
Cell constants a, b, c, α , β , γ	99.91Å 107.03Å 168.04Å 90.00° 90.00° 90.00°	Depositor
Resolution (Å)	66.98 – 2.30 66.98 – 2.30	Depositor EDS
% Data completeness (in resolution range)	99.3 (66.98-2.30) 99.3 (66.98-2.30)	Depositor EDS
R_{merge}	(Not available)	Depositor
R_{sym}	(Not available)	Depositor
$\langle I/\sigma(I) \rangle$ ¹	2.41 (at 2.29Å)	Xtrriage
Refinement program	PHENIX 1.15.2_3472	Depositor
R, R_{free}	0.228 , 0.247 0.228 , 0.246	Depositor DCC
R_{free} test set	1219 reflections (1.52%)	wwPDB-VP
Wilson B-factor (Å ²)	39.5	Xtrriage
Anisotropy	0.932	Xtrriage
Bulk solvent k_{sol} (e/Å ³), B_{sol} (Å ²)	0.42 , 44.9	EDS
L-test for twinning ²	$\langle L \rangle = 0.49$, $\langle L^2 \rangle = 0.33$	Xtrriage
Estimated twinning fraction	No twinning to report.	Xtrriage
F_o, F_c correlation	0.94	EDS
Total number of atoms	16777	wwPDB-VP
Average B, all atoms (Å ²)	69.0	wwPDB-VP

Xtrriage's analysis on translational NCS is as follows: *The largest off-origin peak in the Patterson function is 2.91% of the height of the origin peak. No significant pseudotranslation is detected.*

¹ Intensities estimated from amplitudes.

² Theoretical values of $\langle |L| \rangle$, $\langle L^2 \rangle$ for acentric reflections are 0.5, 0.333 respectively for untwinned datasets, and 0.375, 0.2 for perfectly twinned datasets.

5 Model quality [i](#)

5.1 Standard geometry [i](#)

Bond lengths and bond angles in the following residue types are not validated in this section: GOL, QA7, SO4

The Z score for a bond length (or angle) is the number of standard deviations the observed value is removed from the expected value. A bond length (or angle) with $|Z| > 5$ is considered an outlier worth inspection. RMSZ is the root-mean-square of all Z scores of the bond lengths (or angles).

Mol	Chain	Bond lengths		Bond angles	
		RMSZ	# Z >5	RMSZ	# Z >5
1	A	0.33	0/4337	0.48	0/5891
1	B	0.35	0/4242	0.49	0/5768
All	All	0.34	0/8579	0.48	0/11659

There are no bond length outliers.

There are no bond angle outliers.

There are no chirality outliers.

There are no planarity outliers.

5.2 Too-close contacts [i](#)

In the following table, the Non-H and H(model) columns list the number of non-hydrogen atoms and hydrogen atoms in the chain respectively. The H(added) column lists the number of hydrogen atoms added and optimized by MolProbity. The Clashes column lists the number of clashes within the asymmetric unit, whereas Symm-Clashes lists symmetry related clashes.

Mol	Chain	Non-H	H(model)	H(added)	Clashes	Symm-Clashes
1	A	4240	4072	4146	28	0
1	B	4143	3979	4054	37	0
2	A	31	21	0	0	0
2	B	31	21	0	1	0
3	A	65	0	0	1	0
3	B	40	0	0	0	0
4	B	6	8	8	1	0
5	A	55	0	0	2	0
5	B	65	0	0	1	0
All	All	8676	8101	8208	65	0

The all-atom clashscore is defined as the number of clashes found per 1000 atoms (including

hydrogen atoms). The all-atom clashscore for this structure is 4.

The worst 5 of 65 close contacts within the same asymmetric unit are listed below, sorted by their clash magnitude.

Atom-1	Atom-2	Interatomic distance (Å)	Clash overlap (Å)
1:B:545:ILE:HB	1:B:616:LEU:HD21	1.47	0.96
1:B:545:ILE:HD13	1:B:616:LEU:HD21	1.48	0.94
1:B:367:ILE:HD13	1:B:398:LEU:HD21	1.60	0.82
1:B:545:ILE:CD1	1:B:616:LEU:HD21	2.10	0.82
1:B:545:ILE:HB	1:B:616:LEU:CD2	2.11	0.80

There are no symmetry-related clashes.

5.3 Torsion angles [i](#)

5.3.1 Protein backbone [i](#)

In the following table, the Percentiles column shows the percent Ramachandran outliers of the chain as a percentile score with respect to all X-ray entries followed by that with respect to entries of similar resolution.

The Analysed column shows the number of residues for which the backbone conformation was analysed, and the total number of residues.

Mol	Chain	Analysed	Favoured	Allowed	Outliers	Percentiles	
1	A	535/576 (93%)	520 (97%)	13 (2%)	2 (0%)	34	42
1	B	526/576 (91%)	513 (98%)	11 (2%)	2 (0%)	34	42
All	All	1061/1152 (92%)	1033 (97%)	24 (2%)	4 (0%)	34	42

All (4) Ramachandran outliers are listed below:

Mol	Chain	Res	Type
1	A	420	SER
1	B	420	SER
1	A	384	ALA
1	B	384	ALA

5.3.2 Protein sidechains [i](#)

In the following table, the Percentiles column shows the percent sidechain outliers of the chain as a percentile score with respect to all X-ray entries followed by that with respect to entries of similar

resolution.

The Analysed column shows the number of residues for which the sidechain conformation was analysed, and the total number of residues.

Mol	Chain	Analysed	Rotameric	Outliers	Percentiles	
1	A	447/478 (94%)	443 (99%)	4 (1%)	78	89
1	B	441/478 (92%)	433 (98%)	8 (2%)	59	75
All	All	888/956 (93%)	876 (99%)	12 (1%)	67	81

5 of 12 residues with a non-rotameric sidechain are listed below:

Mol	Chain	Res	Type
1	B	213	SER
1	B	359	MET
1	B	570	VAL
1	B	212	ASP
1	B	566	GLU

Some sidechains can be flipped to improve hydrogen bonding and reduce clashes. There are no such sidechains identified.

5.3.3 RNA [i](#)

There are no RNA molecules in this entry.

5.4 Non-standard residues in protein, DNA, RNA chains [i](#)

There are no non-standard protein/DNA/RNA residues in this entry.

5.5 Carbohydrates [i](#)

There are no monosaccharides in this entry.

5.6 Ligand geometry [i](#)

24 ligands are modelled in this entry.

In the following table, the Counts columns list the number of bonds (or angles) for which Mogul statistics could be retrieved, the number of bonds (or angles) that are observed in the model and the number of bonds (or angles) that are defined in the Chemical Component Dictionary. The Link column lists molecule types, if any, to which the group is linked. The Z score for a bond

length (or angle) is the number of standard deviations the observed value is removed from the expected value. A bond length (or angle) with $|Z| > 2$ is considered an outlier worth inspection. RMSZ is the root-mean-square of all Z scores of the bond lengths (or angles).

Mol	Type	Chain	Res	Link	Bond lengths			Bond angles		
					Counts	RMSZ	# Z > 2	Counts	RMSZ	# Z > 2
3	SO4	A	702	-	4,4,4	0.43	0	6,6,6	0.14	0
3	SO4	A	708	-	4,4,4	0.29	0	6,6,6	0.14	0
3	SO4	A	705	-	4,4,4	0.41	0	6,6,6	0.29	0
2	QA7	B	702	-	29,33,33	4.01	16 (55%)	31,49,49	1.44	3 (9%)
3	SO4	A	713	-	4,4,4	0.44	0	6,6,6	0.05	0
3	SO4	B	707	-	4,4,4	0.33	0	6,6,6	0.13	0
3	SO4	B	708	-	4,4,4	1.33	0	6,6,6	0.29	0
3	SO4	B	709	-	4,4,4	0.70	0	6,6,6	0.31	0
3	SO4	A	714	-	4,4,4	0.78	0	6,6,6	0.24	0
3	SO4	B	703	-	4,4,4	0.31	0	6,6,6	0.15	0
3	SO4	A	710	-	4,4,4	0.72	0	6,6,6	0.14	0
3	SO4	B	704	-	4,4,4	0.31	0	6,6,6	0.22	0
3	SO4	A	711	-	4,4,4	0.45	0	6,6,6	0.06	0
3	SO4	B	705	-	4,4,4	0.32	0	6,6,6	0.12	0
3	SO4	A	712	-	4,4,4	0.41	0	6,6,6	0.05	0
3	SO4	B	706	-	4,4,4	0.24	0	6,6,6	0.10	0
3	SO4	A	706	-	4,4,4	0.39	0	6,6,6	0.28	0
3	SO4	A	709	-	4,4,4	0.36	0	6,6,6	0.13	0
2	QA7	A	701	-	29,33,33	3.88	15 (51%)	31,49,49	1.81	6 (19%)
3	SO4	A	707	-	4,4,4	0.33	0	6,6,6	0.12	0
3	SO4	B	710	-	4,4,4	1.02	0	6,6,6	0.40	0
4	GOL	B	701	-	5,5,5	0.28	0	5,5,5	0.44	0
3	SO4	A	703	-	4,4,4	0.47	0	6,6,6	0.05	0
3	SO4	A	704	-	4,4,4	0.45	0	6,6,6	0.04	0

In the following table, the Chirals column lists the number of chiral outliers, the number of chiral centers analysed, the number of these observed in the model and the number defined in the Chemical Component Dictionary. Similar counts are reported in the Torsion and Rings columns. '-' means no outliers of that kind were identified.

Mol	Type	Chain	Res	Link	Chirals	Torsions	Rings
4	GOL	B	701	-	-	2/4/4/4	-
2	QA7	B	702	-	-	3/19/39/39	0/3/3/3
2	QA7	A	701	-	-	4/19/39/39	0/3/3/3

The worst 5 of 31 bond length outliers are listed below:

Mol	Chain	Res	Type	Atoms	Z	Observed(Å)	Ideal(Å)
2	B	702	QA7	O25-C14	-11.34	1.25	1.41
2	A	701	QA7	C13-C12	-11.15	1.22	1.53
2	B	702	QA7	C13-C12	-11.10	1.23	1.53
2	A	701	QA7	O25-C14	-10.83	1.26	1.41
2	B	702	QA7	C13-C14	8.96	1.67	1.53

The worst 5 of 9 bond angle outliers are listed below:

Mol	Chain	Res	Type	Atoms	Z	Observed(°)	Ideal(°)
2	A	701	QA7	O07-P08-O09	4.54	116.19	102.92
2	A	701	QA7	C12-C13-C14	4.19	107.29	100.98
2	B	702	QA7	O07-P08-O09	4.11	114.92	102.92
2	A	701	QA7	N22-C21-N20	-4.08	122.29	128.68
2	B	702	QA7	N22-C21-N20	-4.08	122.30	128.68

There are no chirality outliers.

5 of 9 torsion outliers are listed below:

Mol	Chain	Res	Type	Atoms
2	B	702	QA7	C05-C06-O07-P08
2	B	702	QA7	O30-C06-O07-P08
2	A	701	QA7	C01-C02-C04-C05
4	B	701	GOL	C1-C2-C3-O3
2	A	701	QA7	C03-C02-C04-C05

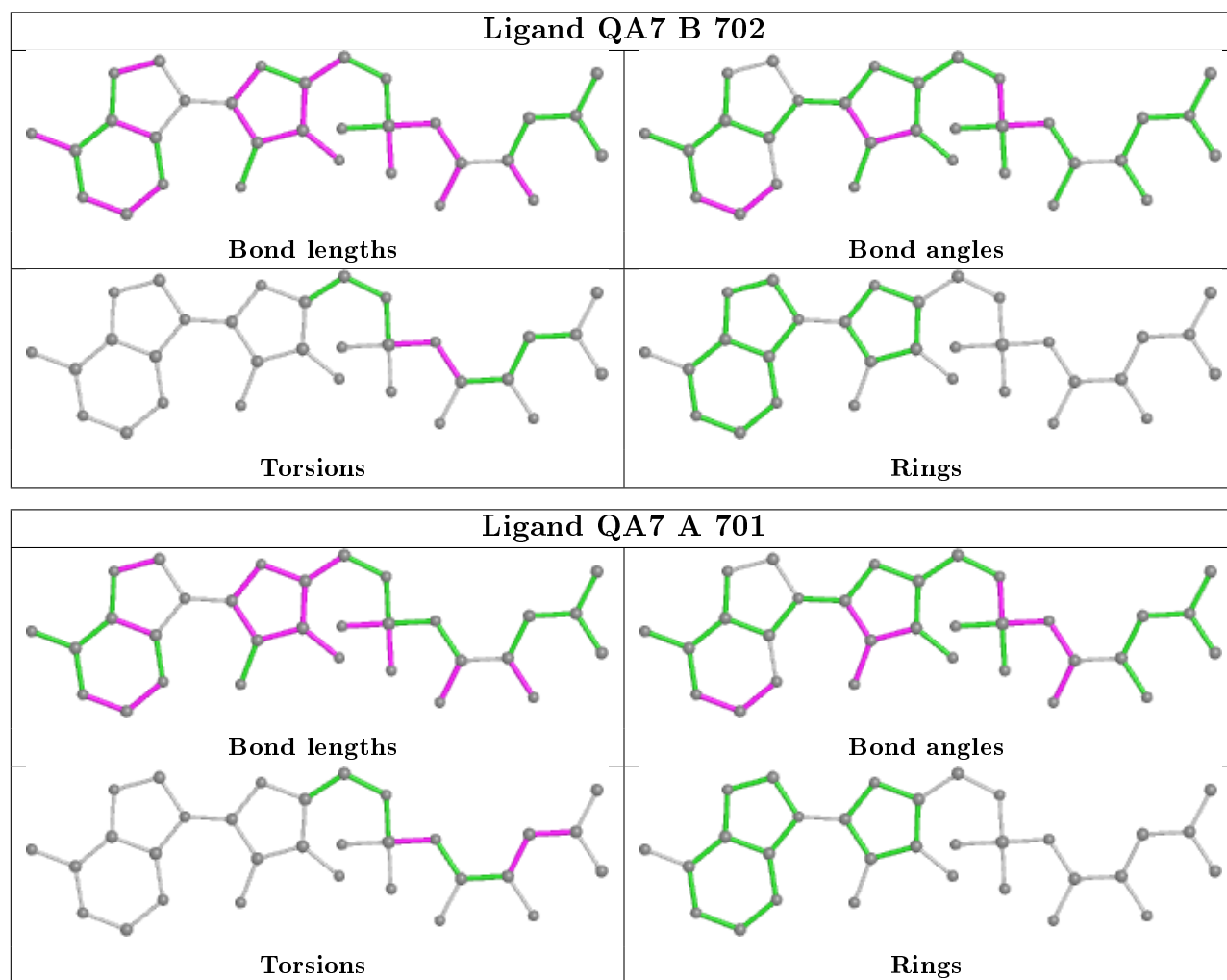
There are no ring outliers.

3 monomers are involved in 3 short contacts:

Mol	Chain	Res	Type	Clashes	Symm-Clashes
2	B	702	QA7	1	0
3	A	709	SO4	1	0
4	B	701	GOL	1	0

The following is a two-dimensional graphical depiction of Mogul quality analysis of bond lengths, bond angles, torsion angles, and ring geometry for all instances of the Ligand of Interest. In addition, ligands with molecular weight > 250 and outliers as shown on the validation Tables will also be included. For torsion angles, if less than 5% of the Mogul distribution of torsion angles is within 10 degrees of the torsion angle in question, then that torsion angle is considered an outlier. Any bond that is central to one or more torsion angles identified as an outlier by Mogul will be highlighted in the graph. For rings, the root-mean-square deviation (RMSD) between the ring in question and similar rings identified by Mogul is calculated over all ring torsion angles. If the average RMSD is greater than 60 degrees and the minimal RMSD between the ring in question and any Mogul-identified rings is also greater than 60 degrees, then that ring is considered an outlier.

The outliers are highlighted in purple. The color gray indicates Mogul did not find sufficient equivalents in the CSD to analyse the geometry.



5.7 Other polymers [\(i\)](#)

There are no such residues in this entry.

5.8 Polymer linkage issues [\(i\)](#)

There are no chain breaks in this entry.

6 Fit of model and data [i](#)

6.1 Protein, DNA and RNA chains [i](#)

In the following table, the column labelled ‘#RSRZ> 2’ contains the number (and percentage) of RSRZ outliers, followed by percent RSRZ outliers for the chain as percentile scores relative to all X-ray entries and entries of similar resolution. The OWAB column contains the minimum, median, 95th percentile and maximum values of the occupancy-weighted average B-factor per residue. The column labelled ‘Q< 0.9’ lists the number of (and percentage) of residues with an average occupancy less than 0.9.

Mol	Chain	Analysed	<RSRZ>	#RSRZ>2	OWAB(Å ²)	Q<0.9
1	A	545/576 (94%)	0.89	56 (10%) 6 9	34, 50, 122, 151	23 (4%)
1	B	531/576 (92%)	1.16	82 (15%) 2 3	32, 52, 137, 154	15 (2%)
All	All	1076/1152 (93%)	1.03	138 (12%) 3 5	32, 51, 131, 154	38 (3%)

The worst 5 of 138 RSRZ outliers are listed below:

Mol	Chain	Res	Type	RSRZ
1	B	620	ARG	15.0
1	B	594	TYR	11.6
1	A	553	TYR	10.3
1	B	570	VAL	9.6
1	B	585	LEU	9.1

6.2 Non-standard residues in protein, DNA, RNA chains [i](#)

There are no non-standard protein/DNA/RNA residues in this entry.

6.3 Carbohydrates [i](#)

There are no monosaccharides in this entry.

6.4 Ligands [i](#)

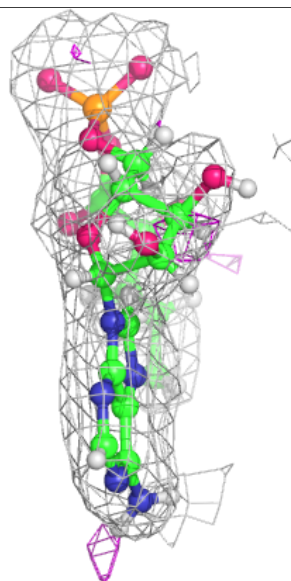
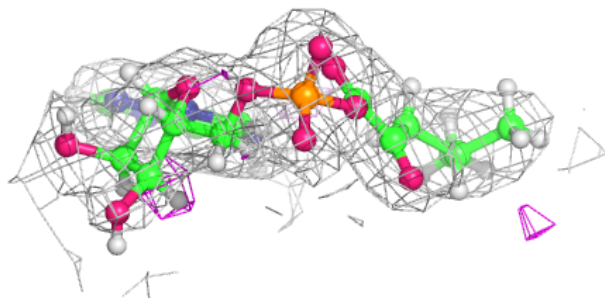
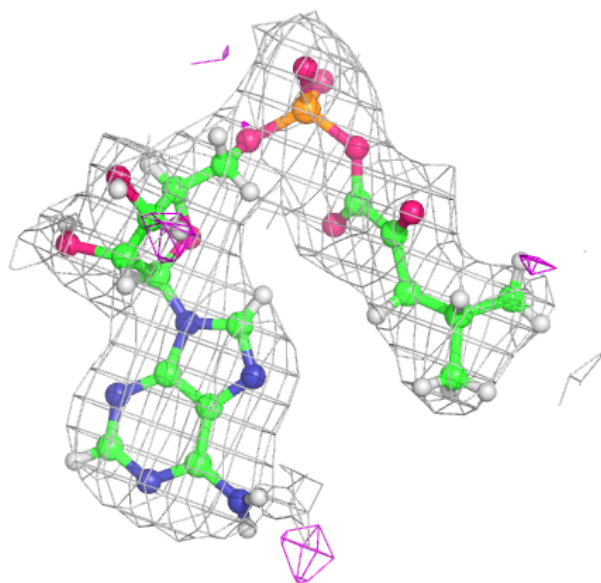
In the following table, the Atoms column lists the number of modelled atoms in the group and the number defined in the chemical component dictionary. The B-factors column lists the minimum, median, 95th percentile and maximum values of B factors of atoms in the group. The column labelled ‘Q< 0.9’ lists the number of atoms with occupancy less than 0.9.

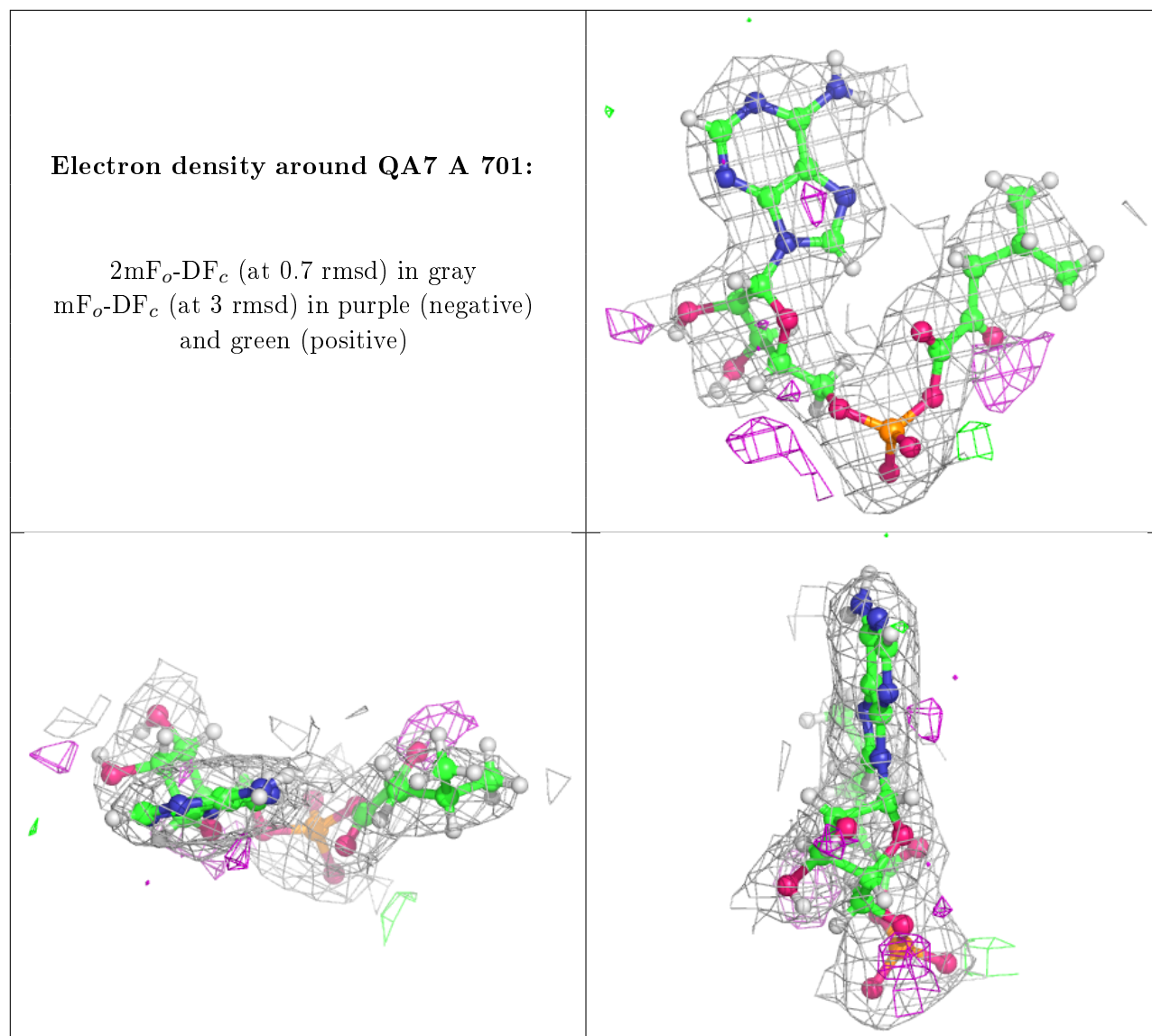
Mol	Type	Chain	Res	Atoms	RSCC	RSR	B-factors(\AA^2)	Q<0.9
3	SO4	B	707	5/5	0.81	0.19	83,94,101,123	0
3	SO4	B	710	5/5	0.82	0.25	97,122,139,145	0
4	GOL	B	701	6/6	0.82	0.21	63,75,89,89	0
3	SO4	A	712	5/5	0.85	0.19	82,86,99,101	0
3	SO4	B	706	5/5	0.87	0.15	78,86,91,99	0
3	SO4	A	710	5/5	0.89	0.13	95,99,112,112	0
3	SO4	A	708	5/5	0.90	0.12	73,89,91,101	0
3	SO4	A	709	5/5	0.90	0.11	83,89,101,113	0
3	SO4	B	709	5/5	0.91	0.09	74,81,95,101	0
3	SO4	A	705	5/5	0.93	0.17	56,57,62,66	0
3	SO4	A	713	5/5	0.93	0.11	86,95,96,110	0
3	SO4	A	714	5/5	0.94	0.14	60,79,100,149	0
3	SO4	A	702	5/5	0.94	0.22	50,64,66,71	0
3	SO4	A	706	5/5	0.94	0.18	59,63,79,82	0
2	QA7	B	702	31/31	0.95	0.14	35,51,63,70	0
3	SO4	B	705	5/5	0.95	0.18	62,72,77,77	0
2	QA7	A	701	31/31	0.96	0.15	39,49,59,61	0
3	SO4	B	708	5/5	0.96	0.12	77,79,86,99	0
3	SO4	B	703	5/5	0.96	0.16	63,67,70,80	0
3	SO4	A	711	5/5	0.97	0.17	57,63,76,78	0
3	SO4	A	707	5/5	0.97	0.09	68,69,78,84	0
3	SO4	A	703	5/5	0.97	0.11	70,74,78,81	0
3	SO4	A	704	5/5	0.98	0.10	69,79,86,93	0
3	SO4	B	704	5/5	0.99	0.13	51,55,57,67	0

The following is a graphical depiction of the model fit to experimental electron density of all instances of the Ligand of Interest. In addition, ligands with molecular weight > 250 and outliers as shown on the geometry validation Tables will also be included. Each fit is shown from different orientation to approximate a three-dimensional view.

Electron density around QA7 B 702:

$2mF_o-DF_c$ (at 0.7 rmsd) in gray
 mF_o-DF_c (at 3 rmsd) in purple (negative)
and green (positive)





6.5 Other polymers [\(i\)](#)

There are no such residues in this entry.