



# Full wwPDB X-ray Structure Validation Report ⓘ

Sep 24, 2023 – 06:58 AM EDT

PDB ID : 5UJJ  
Title : Crystal structure of human H130R tryptophanyl-tRNA synthetase in complex with TrpAMP  
Authors : Xu, X.; Yang, X.-L.  
Deposited on : 2017-01-18  
Resolution : 2.10 Å(reported)

This is a Full wwPDB X-ray Structure Validation Report for a publicly released PDB entry.

We welcome your comments at [validation@mail.wwpdb.org](mailto:validation@mail.wwpdb.org)

A user guide is available at

<https://www.wwpdb.org/validation/2017/XrayValidationReportHelp>

with specific help available everywhere you see the ⓘ symbol.

The types of validation reports are described at

<http://www.wwpdb.org/validation/2017/FAQs#types>.

---

The following versions of software and data (see [references ⓘ](#)) were used in the production of this report:

MolProbity : 4.02b-467  
Mogul : 1.8.5 (274361), CSD as541be (2020)  
Xtriage (Phenix) : 1.13  
EDS : 2.35.1  
buster-report : 1.1.7 (2018)  
Percentile statistics : 20191225.v01 (using entries in the PDB archive December 25th 2019)  
Refmac : 5.8.0158  
CCP4 : 7.0.044 (Gargrove)  
Ideal geometry (proteins) : Engh & Huber (2001)  
Ideal geometry (DNA, RNA) : Parkinson et al. (1996)  
Validation Pipeline (wwPDB-VP) : 2.35.1

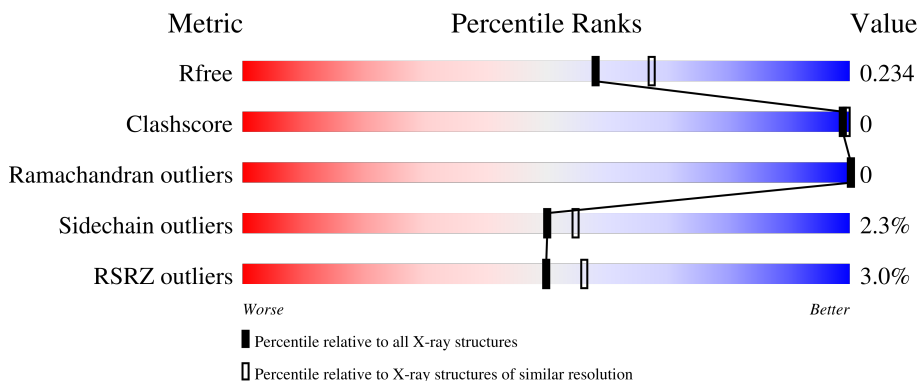
# 1 Overall quality at a glance

The following experimental techniques were used to determine the structure:

*X-RAY DIFFRACTION*

The reported resolution of this entry is 2.10 Å.

Percentile scores (ranging between 0-100) for global validation metrics of the entry are shown in the following graphic. The table shows the number of entries on which the scores are based.



Metric	Whole archive (#Entries)	Similar resolution (#Entries, resolution range(Å))
$R_{free}$	130704	5197 (2.10-2.10)
Clashscore	141614	5710 (2.10-2.10)
Ramachandran outliers	138981	5647 (2.10-2.10)
Sidechain outliers	138945	5648 (2.10-2.10)
RSRZ outliers	127900	5083 (2.10-2.10)

The table below summarises the geometric issues observed across the polymeric chains and their fit to the electron density. The red, orange, yellow and green segments of the lower bar indicate the fraction of residues that contain outliers for  $\geq 3$ , 2, 1 and 0 types of geometric quality criteria respectively. A grey segment represents the fraction of residues that are not modelled. The numeric value for each fraction is indicated below the corresponding segment, with a dot representing fractions  $\leq 5\%$ . The upper red bar (where present) indicates the fraction of residues that have poor fit to the electron density. The numeric value is given above the bar.

Mol	Chain	Length	Quality of chain
1	A	484	 3% 90% 8%
1	B	484	 2% 77% 20%

## 2 Entry composition

There are 4 unique types of molecules in this entry. The entry contains 6941 atoms, of which 0 are hydrogens and 0 are deuteriums.

In the tables below, the ZeroOcc column contains the number of atoms modelled with zero occupancy, the AltConf column contains the number of residues with at least one atom in alternate conformation and the Trace column contains the number of residues modelled with at most 2 atoms.

- Molecule 1 is a protein called Tryptophan-tRNA ligase, cytoplasmic.

Mol	Chain	Residues	Atoms					ZeroOcc	AltConf	Trace
			Total	C	N	O	S			
1	A	446	3570	2284	599	669	18	0	0	0
1	B	388	3132	2008	529	580	15	0	0	0

There are 28 discrepancies between the modelled and reference sequences:

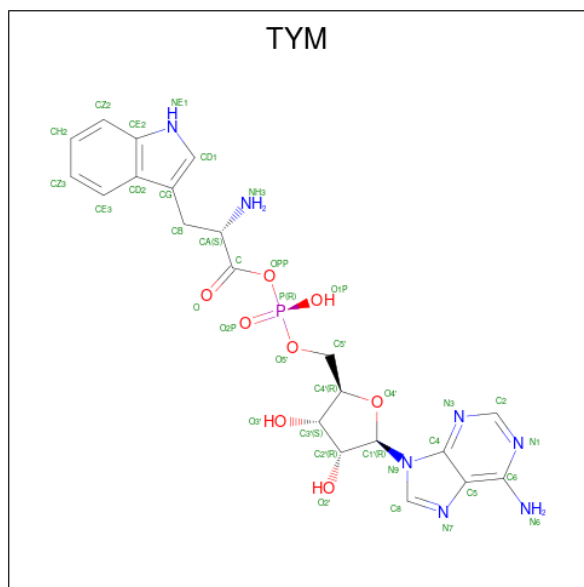
Chain	Residue	Modelled	Actual	Comment	Reference
A	130	ARG	HIS	engineered mutation	UNP P23381
A	472	LYS	-	expression tag	UNP P23381
A	473	LEU	-	expression tag	UNP P23381
A	474	ALA	-	expression tag	UNP P23381
A	475	ALA	-	expression tag	UNP P23381
A	476	ALA	-	expression tag	UNP P23381
A	477	LEU	-	expression tag	UNP P23381
A	478	GLU	-	expression tag	UNP P23381
A	479	HIS	-	expression tag	UNP P23381
A	480	HIS	-	expression tag	UNP P23381
A	481	HIS	-	expression tag	UNP P23381
A	482	HIS	-	expression tag	UNP P23381
A	483	HIS	-	expression tag	UNP P23381
A	484	HIS	-	expression tag	UNP P23381
B	130	ARG	HIS	engineered mutation	UNP P23381
B	472	LYS	-	expression tag	UNP P23381
B	473	LEU	-	expression tag	UNP P23381
B	474	ALA	-	expression tag	UNP P23381
B	475	ALA	-	expression tag	UNP P23381
B	476	ALA	-	expression tag	UNP P23381
B	477	LEU	-	expression tag	UNP P23381
B	478	GLU	-	expression tag	UNP P23381
B	479	HIS	-	expression tag	UNP P23381
B	480	HIS	-	expression tag	UNP P23381
B	481	HIS	-	expression tag	UNP P23381

*Continued on next page...*

Continued from previous page...

Chain	Residue	Modelled	Actual	Comment	Reference
B	482	HIS	-	expression tag	UNP P23381
B	483	HIS	-	expression tag	UNP P23381
B	484	HIS	-	expression tag	UNP P23381

- Molecule 2 is TRYPTOPHANYL-5'AMP (three-letter code: TYM) (formula: C<sub>21</sub>H<sub>24</sub>N<sub>7</sub>O<sub>8</sub>P).



Mol	Chain	Residues	Atoms					ZeroOcc	AltConf
			Total	C	N	O	P		
2	A	1	37	21	7	8	1	0	0
2	B	1	37	21	7	8	1	0	0

- Molecule 3 is MAGNESIUM ION (three-letter code: MG) (formula: Mg).

Mol	Chain	Residues	Atoms		ZeroOcc	AltConf
			Total	Mg		
3	A	2	2	2	0	0
3	B	1	1	1	0	0

- Molecule 4 is water.

Mol	Chain	Residues	Atoms		ZeroOcc	AltConf
			Total	O		
4	A	98	98	98	0	0

Continued on next page...

*Continued from previous page...*

<b>Mol</b>	<b>Chain</b>	<b>Residues</b>	<b>Atoms</b>		<b>ZeroOcc</b>	<b>AltConf</b>
4	B	64	Total	O	0	0
			64	64		



## 4 Data and refinement statistics

Property	Value	Source
Space group	C 1 2 1	Depositor
Cell constants a, b, c, $\alpha$ , $\beta$ , $\gamma$	136.35Å 95.28Å 99.62Å 90.00° 130.46° 90.00°	Depositor
Resolution (Å)	50.00 – 2.10 49.53 – 2.10	Depositor EDS
% Data completeness (in resolution range)	99.1 (50.00-2.10) 99.1 (49.53-2.10)	Depositor EDS
$R_{merge}$	0.06	Depositor
$R_{sym}$	0.05	Depositor
$\langle I/\sigma(I) \rangle$ <sup>1</sup>	7.83 (at 2.10Å)	Xtrriage
Refinement program	REFMAC 5.8.0103	Depositor
R, $R_{free}$	0.215 , 0.232 0.220 , 0.234	Depositor DCC
$R_{free}$ test set	2735 reflections (4.88%)	wwPDB-VP
Wilson B-factor (Å <sup>2</sup> )	21.6	Xtrriage
Anisotropy	0.237	Xtrriage
Bulk solvent $k_{sol}$ (e/Å <sup>3</sup> ), $B_{sol}$ (Å <sup>2</sup> )	0.35 , 28.2	EDS
L-test for twinning <sup>2</sup>	$\langle  L  \rangle = 0.50$ , $\langle L^2 \rangle = 0.33$	Xtrriage
Estimated twinning fraction	0.010 for h,-k,-h-l	Xtrriage
$F_o, F_c$ correlation	0.93	EDS
Total number of atoms	6941	wwPDB-VP
Average B, all atoms (Å <sup>2</sup> )	23.0	wwPDB-VP

Xtrriage's analysis on translational NCS is as follows: *The largest off-origin peak in the Patterson function is 4.91% of the height of the origin peak. No significant pseudotranslation is detected.*

<sup>1</sup>Intensities estimated from amplitudes.

<sup>2</sup>Theoretical values of  $\langle |L| \rangle$ ,  $\langle L^2 \rangle$  for acentric reflections are 0.5, 0.333 respectively for untwinned datasets, and 0.375, 0.2 for perfectly twinned datasets.

## 5 Model quality

### 5.1 Standard geometry

Bond lengths and bond angles in the following residue types are not validated in this section: MG, TYM

The Z score for a bond length (or angle) is the number of standard deviations the observed value is removed from the expected value. A bond length (or angle) with  $|Z| > 5$  is considered an outlier worth inspection. RMSZ is the root-mean-square of all Z scores of the bond lengths (or angles).

Mol	Chain	Bond lengths		Bond angles	
		RMSZ	# Z  >5	RMSZ	# Z  >5
1	A	0.37	0/3651	0.56	0/4925
1	B	0.37	0/3208	0.56	0/4331
All	All	0.37	0/6859	0.56	0/9256

There are no bond length outliers.

There are no bond angle outliers.

There are no chirality outliers.

There are no planarity outliers.

### 5.2 Too-close contacts

In the following table, the Non-H and H(model) columns list the number of non-hydrogen atoms and hydrogen atoms in the chain respectively. The H(added) column lists the number of hydrogen atoms added and optimized by MolProbity. The Clashes column lists the number of clashes within the asymmetric unit, whereas Symm-Clashes lists symmetry-related clashes.

Mol	Chain	Non-H	H(model)	H(added)	Clashes	Symm-Clashes
1	A	3570	0	3528	2	0
1	B	3132	0	3084	3	0
2	A	37	0	23	1	0
2	B	37	0	23	1	0
3	A	2	0	0	0	0
3	B	1	0	0	0	0
4	A	98	0	0	0	0
4	B	64	0	0	0	0
All	All	6941	0	6658	5	0

The all-atom clashscore is defined as the number of clashes found per 1000 atoms (including hydrogen atoms). The all-atom clashscore for this structure is 0.



All (5) close contacts within the same asymmetric unit are listed below, sorted by their clash magnitude.

Atom-1	Atom-2	Interatomic distance (Å)	Clash overlap (Å)
1:A:310:ALA:HB3	2:A:501:T YM:O2'	2.14	0.47
1:B:234:ILE:O	1:B:461:MET:HA	2.15	0.47
1:A:234:ILE:O	1:A:461:MET:HA	2.16	0.46
1:B:310:ALA:HB3	2:B:501:T YM:O2'	2.17	0.45
1:B:258:VAL:CG2	1:B:323:VAL:HG11	2.50	0.42

There are no symmetry-related clashes.

## 5.3 Torsion angles [i](#)

### 5.3.1 Protein backbone [i](#)

In the following table, the Percentiles column shows the percent Ramachandran outliers of the chain as a percentile score with respect to all X-ray entries followed by that with respect to entries of similar resolution.

The Analysed column shows the number of residues for which the backbone conformation was analysed, and the total number of residues.

Mol	Chain	Analysed	Favoured	Allowed	Outliers	Percentiles	
1	A	442/484 (91%)	437 (99%)	5 (1%)	0	100	100
1	B	386/484 (80%)	382 (99%)	4 (1%)	0	100	100
All	All	828/968 (86%)	819 (99%)	9 (1%)	0	100	100

There are no Ramachandran outliers to report.

### 5.3.2 Protein sidechains [i](#)

In the following table, the Percentiles column shows the percent sidechain outliers of the chain as a percentile score with respect to all X-ray entries followed by that with respect to entries of similar resolution.

The Analysed column shows the number of residues for which the sidechain conformation was analysed, and the total number of residues.

Mol	Chain	Analysed	Rotameric	Outliers	Percentiles	
1	A	391/420 (93%)	384 (98%)	7 (2%)	59	65

*Continued on next page...*

*Continued from previous page...*

Mol	Chain	Analysed	Rotameric	Outliers	Percentiles	
1	B	343/420 (82%)	333 (97%)	10 (3%)	42	46
All	All	734/840 (87%)	717 (98%)	17 (2%)	50	55

All (17) residues with a non-rotameric sidechain are listed below:

Mol	Chain	Res	Type
1	A	12	LEU
1	A	24	ARG
1	A	153	LYS
1	A	200	LYS
1	A	218	ASN
1	A	239	ASP
1	A	318	ARG
1	B	159	TYR
1	B	203	TRP
1	B	208	LEU
1	B	236	SER
1	B	239	ASP
1	B	298	ARG
1	B	334	LEU
1	B	347	GLN
1	B	417	ARG
1	B	465	LYS

Sometimes sidechains can be flipped to improve hydrogen bonding and reduce clashes. There are no such sidechains identified.

### 5.3.3 RNA [i](#)

There are no RNA molecules in this entry.

### 5.4 Non-standard residues in protein, DNA, RNA chains [i](#)

There are no non-standard protein/DNA/RNA residues in this entry.

### 5.5 Carbohydrates [i](#)

There are no monosaccharides in this entry.

## 5.6 Ligand geometry

Of 5 ligands modelled in this entry, 3 are monoatomic - leaving 2 for Mogul analysis.

In the following table, the Counts columns list the number of bonds (or angles) for which Mogul statistics could be retrieved, the number of bonds (or angles) that are observed in the model and the number of bonds (or angles) that are defined in the Chemical Component Dictionary. The Link column lists molecule types, if any, to which the group is linked. The Z score for a bond length (or angle) is the number of standard deviations the observed value is removed from the expected value. A bond length (or angle) with  $|Z| > 2$  is considered an outlier worth inspection. RMSZ is the root-mean-square of all Z scores of the bond lengths (or angles).

Mol	Type	Chain	Res	Link	Bond lengths			Bond angles		
					Counts	RMSZ	# Z  > 2	Counts	RMSZ	# Z  > 2
2	TYM	B	501	3	36,41,41	1.05	1 (2%)	39,61,61	1.22	4 (10%)
2	TYM	A	501	3	36,41,41	1.04	1 (2%)	39,61,61	1.23	5 (12%)

In the following table, the Chirals column lists the number of chiral outliers, the number of chiral centers analysed, the number of these observed in the model and the number defined in the Chemical Component Dictionary. Similar counts are reported in the Torsion and Rings columns. '-' means no outliers of that kind were identified.

Mol	Type	Chain	Res	Link	Chirals	Torsions	Rings
2	TYM	B	501	3	-	2/16/39/39	0/5/5/5
2	TYM	A	501	3	-	2/16/39/39	0/5/5/5

All (2) bond length outliers are listed below:

Mol	Chain	Res	Type	Atoms	Z	Observed(Å)	Ideal(Å)
2	A	501	TYM	C5-C4	2.51	1.47	1.40
2	B	501	TYM	C5-C4	2.46	1.47	1.40

All (9) bond angle outliers are listed below:

Mol	Chain	Res	Type	Atoms	Z	Observed(°)	Ideal(°)
2	B	501	TYM	N3-C2-N1	-3.99	122.44	128.68
2	A	501	TYM	N3-C2-N1	-3.92	122.55	128.68
2	B	501	TYM	C4-C5-N7	-2.67	106.62	109.40
2	A	501	TYM	C4-C5-N7	-2.64	106.65	109.40
2	B	501	TYM	CE3-CD2-CE2	2.36	121.30	118.17
2	A	501	TYM	CE3-CD2-CE2	2.32	121.25	118.17
2	A	501	TYM	C2-N1-C6	2.29	122.68	118.75
2	B	501	TYM	C2-N1-C6	2.19	122.50	118.75
2	A	501	TYM	C1'-N9-C4	-2.02	123.09	126.64

There are no chirality outliers.

All (4) torsion outliers are listed below:

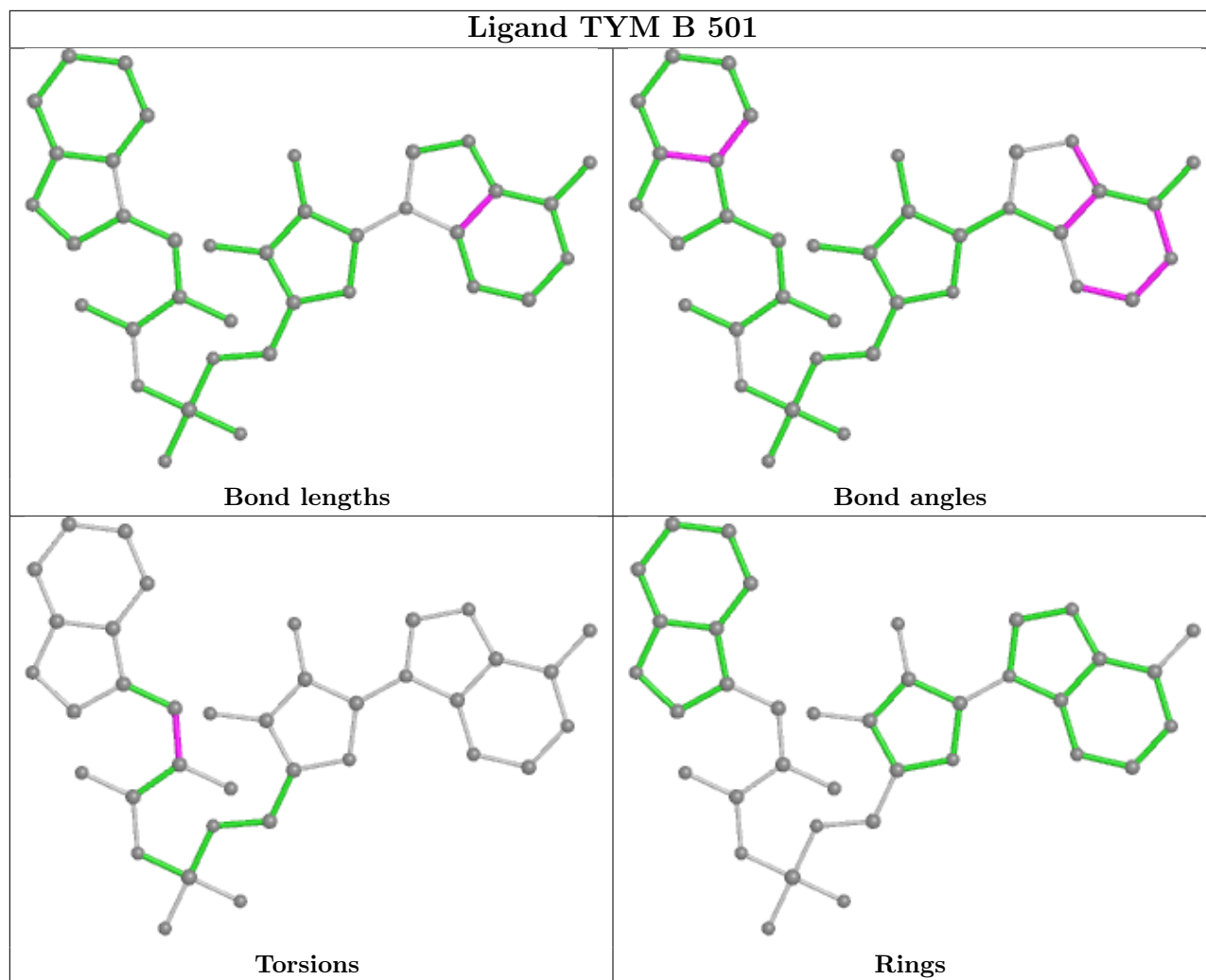
Mol	Chain	Res	Type	Atoms
2	A	501	TYM	NH3-CA-CB-CG
2	B	501	TYM	NH3-CA-CB-CG
2	A	501	TYM	C-CA-CB-CG
2	B	501	TYM	C-CA-CB-CG

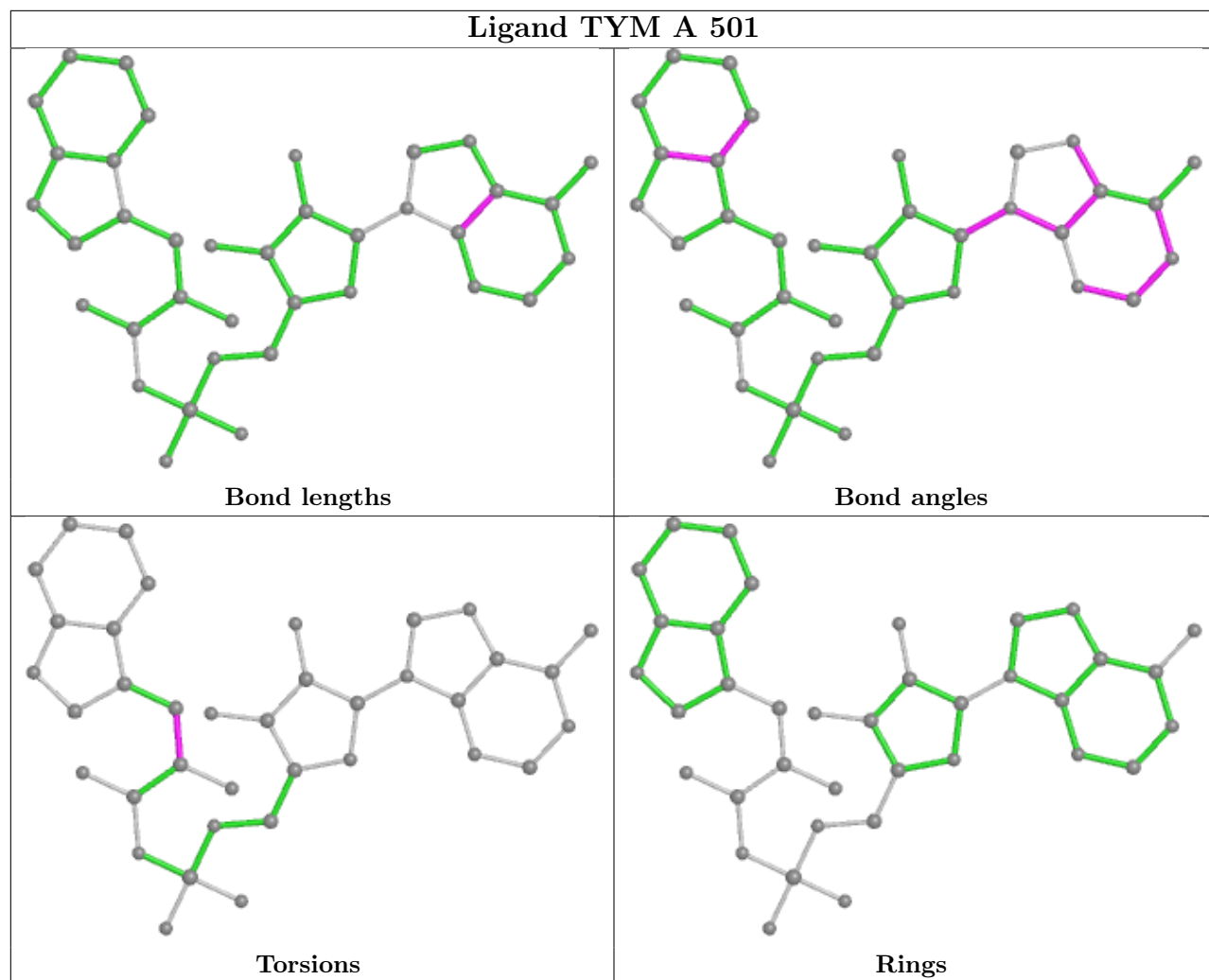
There are no ring outliers.

2 monomers are involved in 2 short contacts:

Mol	Chain	Res	Type	Clashes	Symm-Clashes
2	B	501	TYM	1	0
2	A	501	TYM	1	0

The following is a two-dimensional graphical depiction of Mogul quality analysis of bond lengths, bond angles, torsion angles, and ring geometry for all instances of the Ligand of Interest. In addition, ligands with molecular weight > 250 and outliers as shown on the validation Tables will also be included. For torsion angles, if less than 5% of the Mogul distribution of torsion angles is within 10 degrees of the torsion angle in question, then that torsion angle is considered an outlier. Any bond that is central to one or more torsion angles identified as an outlier by Mogul will be highlighted in the graph. For rings, the root-mean-square deviation (RMSD) between the ring in question and similar rings identified by Mogul is calculated over all ring torsion angles. If the average RMSD is greater than 60 degrees and the minimal RMSD between the ring in question and any Mogul-identified rings is also greater than 60 degrees, then that ring is considered an outlier. The outliers are highlighted in purple. The color gray indicates Mogul did not find sufficient equivalents in the CSD to analyse the geometry.





## 5.7 Other polymers [\(i\)](#)

There are no such residues in this entry.

## 5.8 Polymer linkage issues [\(i\)](#)

There are no chain breaks in this entry.

## 6 Fit of model and data

### 6.1 Protein, DNA and RNA chains

In the following table, the column labelled ‘#RSRZ > 2’ contains the number (and percentage) of RSRZ outliers, followed by percent RSRZ outliers for the chain as percentile scores relative to all X-ray entries and entries of similar resolution. The OWAB column contains the minimum, median, 95<sup>th</sup> percentile and maximum values of the occupancy-weighted average B-factor per residue. The column labelled ‘Q < 0.9’ lists the number of (and percentage) of residues with an average occupancy less than 0.9.

Mol	Chain	Analysed	<RSRZ>	#RSRZ>2	OWAB(Å <sup>2</sup> )	Q<0.9
1	A	446/484 (92%)	0.03	16 (3%) 42 49	12, 21, 35, 65	4 (0%)
1	B	388/484 (80%)	0.18	9 (2%) 60 65	13, 21, 40, 70	6 (1%)
All	All	834/968 (86%)	0.10	25 (2%) 50 56	12, 21, 39, 70	10 (1%)

All (25) RSRZ outliers are listed below:

Mol	Chain	Res	Type	RSRZ
1	B	167	GLU	6.3
1	A	61	ASP	5.8
1	B	168	ALA	5.1
1	B	385	GLU	5.1
1	A	62	CYS	5.0
1	A	64	PRO	4.6
1	B	383	THR	4.1
1	A	298	ARG	3.9
1	B	426	LEU	3.2
1	B	382	ASP	3.1
1	B	166	SER	3.0
1	B	389	GLN	2.9
1	A	469	ASP	2.9
1	A	382	ASP	2.8
1	A	10	LEU	2.8
1	A	295	GLN	2.8
1	A	168	ALA	2.6
1	B	390	PHE	2.4
1	A	167	GLU	2.3
1	A	384	ILE	2.2
1	A	470	PHE	2.1
1	A	63	PRO	2.1
1	A	385	GLU	2.1
1	A	165	SER	2.0

*Continued on next page...*

*Continued from previous page...*

Mol	Chain	Res	Type	RSRZ
1	A	59	LYS	2.0

## 6.2 Non-standard residues in protein, DNA, RNA chains [i](#)

There are no non-standard protein/DNA/RNA residues in this entry.

## 6.3 Carbohydrates [i](#)

There are no monosaccharides in this entry.

## 6.4 Ligands [i](#)

In the following table, the Atoms column lists the number of modelled atoms in the group and the number defined in the chemical component dictionary. The B-factors column lists the minimum, median, 95<sup>th</sup> percentile and maximum values of B factors of atoms in the group. The column labelled 'Q< 0.9' lists the number of atoms with occupancy less than 0.9.

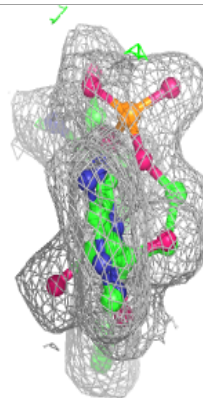
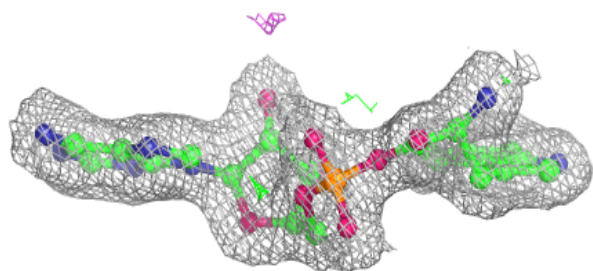
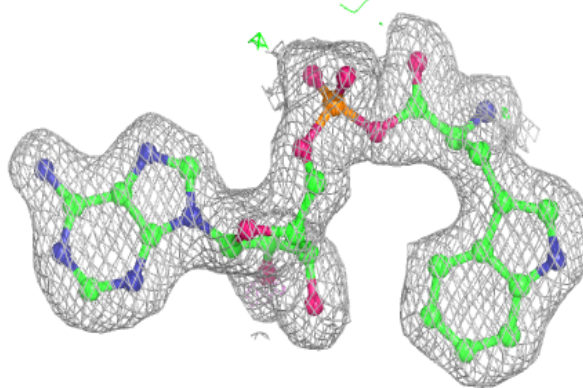
Mol	Type	Chain	Res	Atoms	RSCC	RSR	B-factors(Å <sup>2</sup> )	Q<0.9
3	MG	A	502	1/1	0.87	0.29	49,49,49,49	0
3	MG	A	503	1/1	0.95	0.08	42,42,42,42	0
3	MG	B	502	1/1	0.95	0.12	34,34,34,34	0
2	TYM	B	501	37/37	0.96	0.10	14,15,16,17	0
2	TYM	A	501	37/37	0.96	0.10	14,15,16,16	0

The following is a graphical depiction of the model fit to experimental electron density of all instances of the Ligand of Interest. In addition, ligands with molecular weight > 250 and outliers as shown on the geometry validation Tables will also be included. Each fit is shown from different orientation to approximate a three-dimensional view.

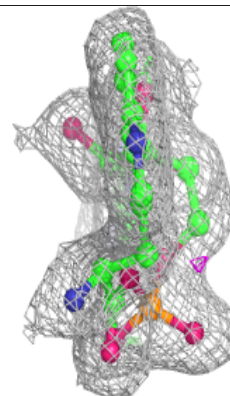
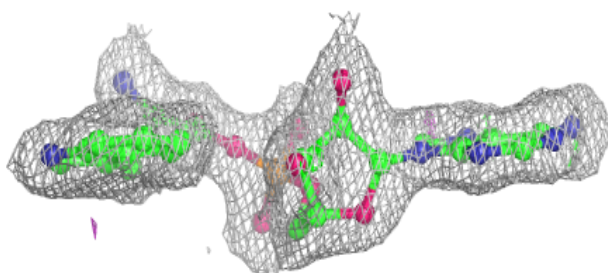
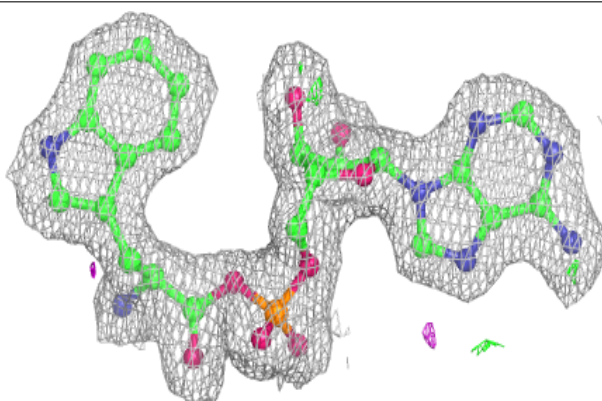


**Electron density around TYM B 501:**

$2mF_o-DF_c$  (at 0.7 rmsd) in gray  
 $mF_o-DF_c$  (at 3 rmsd) in purple (negative)  
and green (positive)

**Electron density around TYM A 501:**

$2mF_o-DF_c$  (at 0.7 rmsd) in gray  
 $mF_o-DF_c$  (at 3 rmsd) in purple (negative)  
and green (positive)



## 6.5 Other polymers [i](#)

There are no such residues in this entry.