



# wwPDB X-ray Structure Validation Summary Report ⓘ

Sep 24, 2023 – 07:56 AM EDT

PDB ID : 5UDT  
Title : LarE, a sulfur transferase involved in synthesis of the cofactor for lactate racemase, in complex with AMP  
Authors : Fellner, M.; Desguin, B.; Hausinger, R.P.; Hu, J.  
Deposited on : 2016-12-28  
Resolution : 3.19 Å(reported)

This is a wwPDB X-ray Structure Validation Summary Report for a publicly released PDB entry.

We welcome your comments at [validation@mail.wwpdb.org](mailto:validation@mail.wwpdb.org)

A user guide is available at

<https://www.wwpdb.org/validation/2017/XrayValidationReportHelp>

with specific help available everywhere you see the ⓘ symbol.

The types of validation reports are described at

<http://www.wwpdb.org/validation/2017/FAQs#types>.

---

The following versions of software and data (see [references ⓘ](#)) were used in the production of this report:

MolProbity : 4.02b-467  
Mogul : 1.8.5 (274361), CSD as541be (2020)  
Xtriage (Phenix) : 1.13  
EDS : 2.35.1  
buster-report : 1.1.7 (2018)  
Percentile statistics : 20191225.v01 (using entries in the PDB archive December 25th 2019)  
Refmac : 5.8.0158  
CCP4 : 7.0.044 (Gargrove)  
Ideal geometry (proteins) : Engh & Huber (2001)  
Ideal geometry (DNA, RNA) : Parkinson et al. (1996)  
Validation Pipeline (wwPDB-VP) : 2.35.1

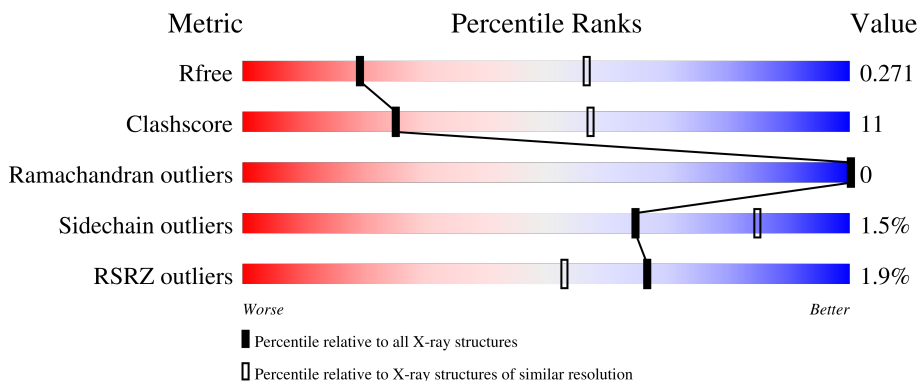
# 1 Overall quality at a glance

The following experimental techniques were used to determine the structure:

*X-RAY DIFFRACTION*

The reported resolution of this entry is 3.19 Å.

Percentile scores (ranging between 0-100) for global validation metrics of the entry are shown in the following graphic. The table shows the number of entries on which the scores are based.



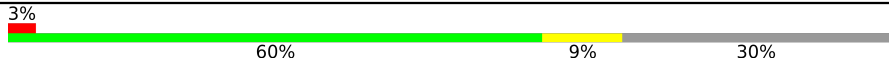
Metric	Whole archive (#Entries)	Similar resolution (#Entries, resolution range(Å))
$R_{free}$	130704	1467 (3.20-3.16)
Clashscore	141614	1599 (3.20-3.16)
Ramachandran outliers	138981	1574 (3.20-3.16)
Sidechain outliers	138945	1573 (3.20-3.16)
RSRZ outliers	127900	1423 (3.20-3.16)

The table below summarises the geometric issues observed across the polymeric chains and their fit to the electron density. The red, orange, yellow and green segments of the lower bar indicate the fraction of residues that contain outliers for  $\geq 3$ , 2, 1 and 0 types of geometric quality criteria respectively. A grey segment represents the fraction of residues that are not modelled. The numeric value for each fraction is indicated below the corresponding segment, with a dot representing fractions  $\leq 5\%$ . The upper red bar (where present) indicates the fraction of residues that have poor fit to the electron density. The numeric value is given above the bar.

Mol	Chain	Length	Quality of chain
1	A	286	 73% 16% 10%
1	B	286	 66% 22% 12%
1	C	286	 69% 19% 10%
1	D	286	 53% 12% 35%
1	E	286	 64% 21% 15%

Continued on next page...

*Continued from previous page...*

Mol	Chain	Length	Quality of chain
1	F	286	

The following table lists non-polymeric compounds, carbohydrate monomers and non-standard residues in protein, DNA, RNA chains that are outliers for geometric or electron-density-fit criteria:

Mol	Type	Chain	Res	Chirality	Geometry	Clashes	Electron density
3	PO4	E	301	-	-	X	-
3	PO4	F	301	-	-	X	X

## 2 Entry composition [i](#)

There are 3 unique types of molecules in this entry. The entry contains 10003 atoms, of which 0 are hydrogens and 0 are deuteriums.

In the tables below, the ZeroOcc column contains the number of atoms modelled with zero occupancy, the AltConf column contains the number of residues with at least one atom in alternate conformation and the Trace column contains the number of residues modelled with at most 2 atoms.

- Molecule 1 is a protein called Lactate racemization operon protein LarE.

Mol	Chain	Residues	Atoms					ZeroOcc	AltConf	Trace
			Total	C	N	O	S			
1	A	256	Total 1782	C 1112	N 323	O 341	S 6	0	0	0
1	B	252	Total 1872	C 1190	N 327	O 349	S 6	0	1	0
1	C	256	Total 1938	C 1224	N 340	O 368	S 6	0	1	0
1	D	186	Total 1228	C 770	N 232	O 223	S 3	0	0	0
1	E	244	Total 1742	C 1096	N 307	O 333	S 6	0	0	0
1	F	199	Total 1342	C 838	N 248	O 252	S 4	0	0	0

There are 60 discrepancies between the modelled and reference sequences:

Chain	Residue	Modelled	Actual	Comment	Reference
A	277	ALA	-	expression tag	UNP F9UST4
A	278	SER	-	expression tag	UNP F9UST4
A	279	TRP	-	expression tag	UNP F9UST4
A	280	SER	-	expression tag	UNP F9UST4
A	281	HIS	-	expression tag	UNP F9UST4
A	282	PRO	-	expression tag	UNP F9UST4
A	283	GLN	-	expression tag	UNP F9UST4
A	284	PHE	-	expression tag	UNP F9UST4
A	285	GLU	-	expression tag	UNP F9UST4
A	286	LYS	-	expression tag	UNP F9UST4
B	277	ALA	-	expression tag	UNP F9UST4
B	278	SER	-	expression tag	UNP F9UST4
B	279	TRP	-	expression tag	UNP F9UST4
B	280	SER	-	expression tag	UNP F9UST4
B	281	HIS	-	expression tag	UNP F9UST4
B	282	PRO	-	expression tag	UNP F9UST4
B	283	GLN	-	expression tag	UNP F9UST4

*Continued on next page...*

*Continued from previous page...*

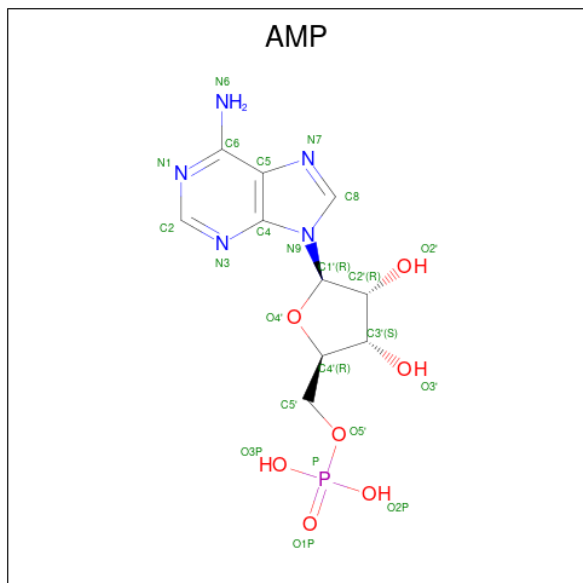
Chain	Residue	Modelled	Actual	Comment	Reference
B	284	PHE	-	expression tag	UNP F9UST4
B	285	GLU	-	expression tag	UNP F9UST4
B	286	LYS	-	expression tag	UNP F9UST4
C	277	ALA	-	expression tag	UNP F9UST4
C	278	SER	-	expression tag	UNP F9UST4
C	279	TRP	-	expression tag	UNP F9UST4
C	280	SER	-	expression tag	UNP F9UST4
C	281	HIS	-	expression tag	UNP F9UST4
C	282	PRO	-	expression tag	UNP F9UST4
C	283	GLN	-	expression tag	UNP F9UST4
C	284	PHE	-	expression tag	UNP F9UST4
C	285	GLU	-	expression tag	UNP F9UST4
C	286	LYS	-	expression tag	UNP F9UST4
D	277	ALA	-	expression tag	UNP F9UST4
D	278	SER	-	expression tag	UNP F9UST4
D	279	TRP	-	expression tag	UNP F9UST4
D	280	SER	-	expression tag	UNP F9UST4
D	281	HIS	-	expression tag	UNP F9UST4
D	282	PRO	-	expression tag	UNP F9UST4
D	283	GLN	-	expression tag	UNP F9UST4
D	284	PHE	-	expression tag	UNP F9UST4
D	285	GLU	-	expression tag	UNP F9UST4
D	286	LYS	-	expression tag	UNP F9UST4
E	277	ALA	-	expression tag	UNP F9UST4
E	278	SER	-	expression tag	UNP F9UST4
E	279	TRP	-	expression tag	UNP F9UST4
E	280	SER	-	expression tag	UNP F9UST4
E	281	HIS	-	expression tag	UNP F9UST4
E	282	PRO	-	expression tag	UNP F9UST4
E	283	GLN	-	expression tag	UNP F9UST4
E	284	PHE	-	expression tag	UNP F9UST4
E	285	GLU	-	expression tag	UNP F9UST4
E	286	LYS	-	expression tag	UNP F9UST4
F	277	ALA	-	expression tag	UNP F9UST4
F	278	SER	-	expression tag	UNP F9UST4
F	279	TRP	-	expression tag	UNP F9UST4
F	280	SER	-	expression tag	UNP F9UST4
F	281	HIS	-	expression tag	UNP F9UST4
F	282	PRO	-	expression tag	UNP F9UST4
F	283	GLN	-	expression tag	UNP F9UST4
F	284	PHE	-	expression tag	UNP F9UST4
F	285	GLU	-	expression tag	UNP F9UST4

*Continued on next page...*

Continued from previous page...

Chain	Residue	Modelled	Actual	Comment	Reference
F	286	LYS	-	expression tag	UNP F9UST4

- Molecule 2 is ADENOSINE MONOPHOSPHATE (three-letter code: AMP) (formula:  $C_{10}H_{14}N_5O_7P$ ).



Mol	Chain	Residues	Atoms					ZeroOcc	AltConf
			Total	C	N	O	P		
2	A	1	Total	C	N	O	P	0	0
			23	10	5	7	1		
2	B	1	Total	C	N	O	P	0	0
			23	10	5	7	1		
2	C	1	Total	C	N	O	P	0	0
			23	10	5	7	1		

- Molecule 3 is PHOSPHATE ION (three-letter code: PO4) (formula:  $O_4P$ ).

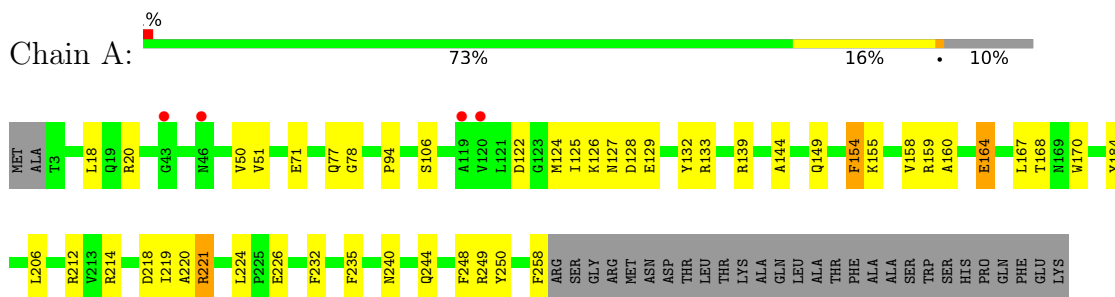


Mol	Chain	Residues	Atoms			ZeroOcc	AltConf
3	A	1	Total	O	P	0	0
			5	4	1		
3	B	1	Total	O	P	0	0
			5	4	1		
3	C	1	Total	O	P	0	0
			5	4	1		
3	D	1	Total	O	P	0	0
			5	4	1		
3	E	1	Total	O	P	0	0
			5	4	1		
3	F	1	Total	O	P	0	0
			5	4	1		

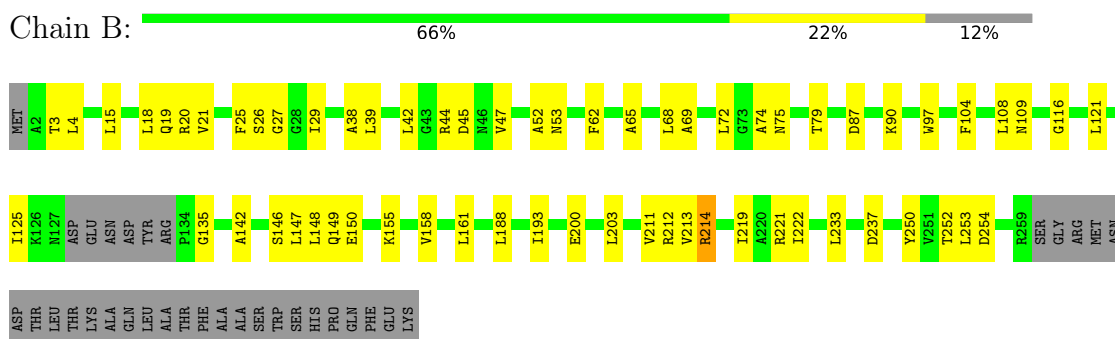
### 3 Residue-property plots [i](#)

These plots are drawn for all protein, RNA, DNA and oligosaccharide chains in the entry. The first graphic for a chain summarises the proportions of the various outlier classes displayed in the second graphic. The second graphic shows the sequence view annotated by issues in geometry and electron density. Residues are color-coded according to the number of geometric quality criteria for which they contain at least one outlier: green = 0, yellow = 1, orange = 2 and red = 3 or more. A red dot above a residue indicates a poor fit to the electron density ( $RSRZ > 2$ ). Stretches of 2 or more consecutive residues without any outlier are shown as a green connector. Residues present in the sample, but not in the model, are shown in grey.

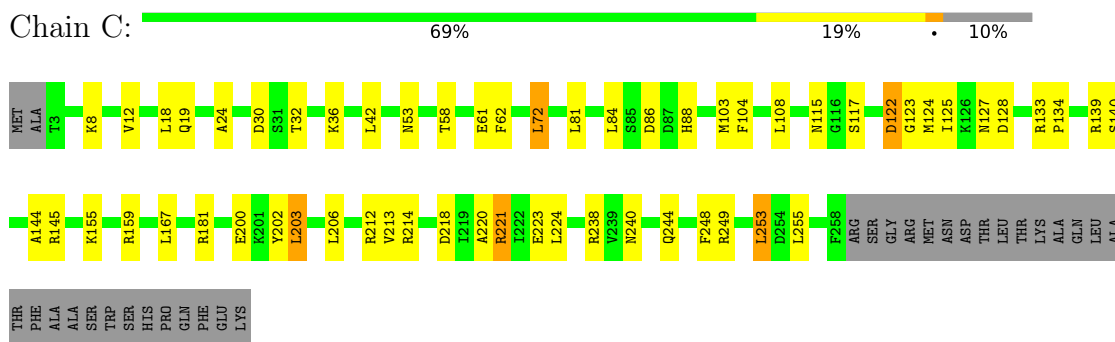
- Molecule 1: Lactate racemization operon protein LarE



- Molecule 1: Lactate racemization operon protein LarE



- Molecule 1: Lactate racemization operon protein LarE



- Molecule 1: Lactate racemization operon protein LarE





## 4 Data and refinement statistics i

Property	Value	Source
Space group	P 31 2 1	Depositor
Cell constants a, b, c, $\alpha$ , $\beta$ , $\gamma$	166.30Å 166.30Å 124.92Å 90.00° 90.00° 120.00°	Depositor
Resolution (Å)	47.19 – 3.19 47.18 – 3.19	Depositor EDS
% Data completeness (in resolution range)	99.6 (47.19-3.19) 99.8 (47.18-3.19)	Depositor EDS
$R_{merge}$	0.10	Depositor
$R_{sym}$	(Not available)	Depositor
$\langle I/\sigma(I) \rangle$ <sup>1</sup>	2.23 (at 3.19Å)	Xtrriage
Refinement program	PHENIX 1.11.1-2575	Depositor
R, $R_{free}$	0.207 , 0.273 0.207 , 0.271	Depositor DCC
$R_{free}$ test set	1717 reflections (5.12%)	wwPDB-VP
Wilson B-factor (Å <sup>2</sup> )	82.0	Xtrriage
Anisotropy	0.577	Xtrriage
Bulk solvent $k_{sol}$ (e/Å <sup>3</sup> ), $B_{sol}$ (Å <sup>2</sup> )	0.30 , 79.9	EDS
L-test for twinning <sup>2</sup>	$\langle  L  \rangle = 0.45$ , $\langle L^2 \rangle = 0.28$	Xtrriage
Estimated twinning fraction	0.056 for -h,-k,l	Xtrriage
$F_o, F_c$ correlation	0.92	EDS
Total number of atoms	10003	wwPDB-VP
Average B, all atoms (Å <sup>2</sup> )	90.0	wwPDB-VP

Xtrriage's analysis on translational NCS is as follows: *The largest off-origin peak in the Patterson function is 3.50% of the height of the origin peak. No significant pseudotranslation is detected.*

<sup>1</sup>Intensities estimated from amplitudes.

<sup>2</sup>Theoretical values of  $\langle |L| \rangle$ ,  $\langle L^2 \rangle$  for acentric reflections are 0.5, 0.333 respectively for untwinned datasets, and 0.375, 0.2 for perfectly twinned datasets.

## 5 Model quality [i](#)

### 5.1 Standard geometry [i](#)

Bond lengths and bond angles in the following residue types are not validated in this section: PO4, AMP

The Z score for a bond length (or angle) is the number of standard deviations the observed value is removed from the expected value. A bond length (or angle) with  $|Z| > 5$  is considered an outlier worth inspection. RMSZ is the root-mean-square of all Z scores of the bond lengths (or angles).

Mol	Chain	Bond lengths		Bond angles	
		RMSZ	# Z  >5	RMSZ	# Z  >5
1	A	0.49	0/1811	0.63	0/2470
1	B	0.53	0/1904	0.68	0/2590
1	C	0.56	0/1972	0.72	1/2681 (0.0%)
1	D	0.48	0/1246	0.60	0/1701
1	E	0.52	0/1768	0.65	1/2408 (0.0%)
1	F	0.49	0/1361	0.63	0/1852
All	All	0.52	0/10062	0.66	2/13702 (0.0%)

Chiral center outliers are detected by calculating the chiral volume of a chiral center and verifying if the center is modelled as a planar moiety or with the opposite hand. A planarity outlier is detected by checking planarity of atoms in a peptide group, atoms in a mainchain group or atoms of a sidechain that are expected to be planar.

Mol	Chain	#Chirality outliers	#Planarity outliers
1	C	0	1

There are no bond length outliers.

All (2) bond angle outliers are listed below:

Mol	Chain	Res	Type	Atoms	Z	Observed(°)	Ideal(°)
1	E	246	LEU	CB-CG-CD2	-5.74	101.24	111.00
1	C	203	LEU	CB-CG-CD2	-5.70	101.31	111.00

There are no chirality outliers.

All (1) planarity outliers are listed below:

Mol	Chain	Res	Type	Group
1	C	221	ARG	Sidechain

## 5.2 Too-close contacts [i](#)

In the following table, the Non-H and H(model) columns list the number of non-hydrogen atoms and hydrogen atoms in the chain respectively. The H(added) column lists the number of hydrogen atoms added and optimized by MolProbity. The Clashes column lists the number of clashes within the asymmetric unit, whereas Symm-Clashes lists symmetry-related clashes.

Mol	Chain	Non-H	H(model)	H(added)	Clashes	Symm-Clashes
1	A	1782	0	1523	32	1
1	B	1872	0	1787	46	2
1	C	1938	0	1838	45	0
1	D	1228	0	974	24	0
1	E	1742	0	1591	40	1
1	F	1342	0	1079	23	0
2	A	23	0	12	0	0
2	B	23	0	12	2	0
2	C	23	0	12	1	0
3	A	5	0	0	1	0
3	B	5	0	0	0	0
3	C	5	0	0	0	0
3	D	5	0	0	0	0
3	E	5	0	0	4	0
3	F	5	0	0	4	0
All	All	10003	0	8828	202	2

The all-atom clashscore is defined as the number of clashes found per 1000 atoms (including hydrogen atoms). The all-atom clashscore for this structure is 11.

The worst 5 of 202 close contacts within the same asymmetric unit are listed below, sorted by their clash magnitude.

Atom-1	Atom-2	Interatomic distance (Å)	Clash overlap (Å)
1:C:214:ARG:HG3	1:C:221:ARG:NH1	1.91	0.85
1:E:212:ARG:NH1	3:E:301:PO4:O3	2.08	0.85
1:F:212:ARG:NH1	3:F:301:PO4:O2	2.16	0.77
1:A:139:ARG:HG2	1:A:144:ALA:HB3	1.70	0.74
1:E:212:ARG:HH12	3:E:301:PO4:P	2.12	0.72

All (2) symmetry-related close contacts are listed below. The label for Atom-2 includes the symmetry operator and encoded unit-cell translations to be applied.

Atom-1	Atom-2	Interatomic distance (Å)	Clash overlap (Å)
1:A:132:TYR:OH	1:B:237:ASP:OD1[3_654]	2.07	0.13

*Continued on next page...*

*Continued from previous page...*

Atom-1	Atom-2	Interatomic distance (Å)	Clash overlap (Å)
1:B:149:GLN:NE2	1:E:113:ALA:O[5_444]	2.11	0.09

## 5.3 Torsion angles [i](#)

### 5.3.1 Protein backbone [i](#)

In the following table, the Percentiles column shows the percent Ramachandran outliers of the chain as a percentile score with respect to all X-ray entries followed by that with respect to entries of similar resolution.

The Analysed column shows the number of residues for which the backbone conformation was analysed, and the total number of residues.

Mol	Chain	Analysed	Favoured	Allowed	Outliers	Percentiles	
1	A	254/286 (89%)	243 (96%)	11 (4%)	0	100	100
1	B	249/286 (87%)	242 (97%)	7 (3%)	0	100	100
1	C	255/286 (89%)	241 (94%)	14 (6%)	0	100	100
1	D	178/286 (62%)	166 (93%)	12 (7%)	0	100	100
1	E	240/286 (84%)	235 (98%)	5 (2%)	0	100	100
1	F	189/286 (66%)	181 (96%)	8 (4%)	0	100	100
All	All	1365/1716 (80%)	1308 (96%)	57 (4%)	0	100	100

There are no Ramachandran outliers to report.

### 5.3.2 Protein sidechains [i](#)

In the following table, the Percentiles column shows the percent sidechain outliers of the chain as a percentile score with respect to all X-ray entries followed by that with respect to entries of similar resolution.

The Analysed column shows the number of residues for which the sidechain conformation was analysed, and the total number of residues.

Mol	Chain	Analysed	Rotameric	Outliers	Percentiles	
1	A	143/236 (61%)	138 (96%)	5 (4%)	36	68
1	B	180/236 (76%)	179 (99%)	1 (1%)	86	94
1	C	190/236 (80%)	186 (98%)	4 (2%)	53	79

*Continued on next page...*

Continued from previous page...

Mol	Chain	Analysed	Rotameric	Outliers	Percentiles	
1	D	82/236 (35%)	82 (100%)	0	100	100
1	E	158/236 (67%)	155 (98%)	3 (2%)	57	80
1	F	97/236 (41%)	97 (100%)	0	100	100
All	All	850/1416 (60%)	837 (98%)	13 (2%)	65	85

5 of 13 residues with a non-rotameric sidechain are listed below:

Mol	Chain	Res	Type
1	C	84	LEU
1	C	122	ASP
1	E	192	ASN
1	E	175	SER
1	E	176	CYS

Sometimes sidechains can be flipped to improve hydrogen bonding and reduce clashes. All (1) such sidechains are listed below:

Mol	Chain	Res	Type
1	E	192	ASN

### 5.3.3 RNA [i](#)

There are no RNA molecules in this entry.

## 5.4 Non-standard residues in protein, DNA, RNA chains [i](#)

There are no non-standard protein/DNA/RNA residues in this entry.

## 5.5 Carbohydrates [i](#)

There are no monosaccharides in this entry.

## 5.6 Ligand geometry [i](#)

9 ligands are modelled in this entry.

In the following table, the Counts columns list the number of bonds (or angles) for which Mogul statistics could be retrieved, the number of bonds (or angles) that are observed in the model and the number of bonds (or angles) that are defined in the Chemical Component Dictionary. The

Link column lists molecule types, if any, to which the group is linked. The Z score for a bond length (or angle) is the number of standard deviations the observed value is removed from the expected value. A bond length (or angle) with  $|Z| > 2$  is considered an outlier worth inspection. RMSZ is the root-mean-square of all Z scores of the bond lengths (or angles).

Mol	Type	Chain	Res	Link	Bond lengths			Bond angles		
					Counts	RMSZ	# Z  > 2	Counts	RMSZ	# Z  > 2
3	PO4	E	301	-	4,4,4	0.92	0	6,6,6	0.47	0
2	AMP	C	501	-	22,25,25	1.20	2 (9%)	25,38,38	3.30	4 (16%)
3	PO4	D	301	-	4,4,4	0.76	0	6,6,6	0.57	0
3	PO4	B	502	-	4,4,4	0.82	0	6,6,6	0.96	0
3	PO4	A	502	-	4,4,4	0.88	0	6,6,6	0.37	0
3	PO4	F	301	-	4,4,4	0.86	0	6,6,6	0.45	0
3	PO4	C	502	-	4,4,4	0.94	0	6,6,6	0.38	0
2	AMP	B	501	-	22,25,25	1.11	3 (13%)	25,38,38	3.28	4 (16%)
2	AMP	A	501	-	22,25,25	1.15	3 (13%)	25,38,38	3.39	5 (20%)

In the following table, the Chirals column lists the number of chiral outliers, the number of chiral centers analysed, the number of these observed in the model and the number defined in the Chemical Component Dictionary. Similar counts are reported in the Torsion and Rings columns. '-' means no outliers of that kind were identified.

Mol	Type	Chain	Res	Link	Chirals	Torsions	Rings
2	AMP	C	501	-	-	0/6/26/26	0/3/3/3
2	AMP	B	501	-	-	3/6/26/26	0/3/3/3
2	AMP	A	501	-	-	5/6/26/26	0/3/3/3

The worst 5 of 8 bond length outliers are listed below:

Mol	Chain	Res	Type	Atoms	Z	Observed(Å)	Ideal(Å)
2	C	501	AMP	C6-N6	2.93	1.44	1.34
2	C	501	AMP	C5-C4	-2.76	1.33	1.40
2	A	501	AMP	C6-N6	2.68	1.43	1.34
2	B	501	AMP	C6-N6	2.65	1.43	1.34
2	A	501	AMP	C5-C4	-2.59	1.34	1.40

The worst 5 of 13 bond angle outliers are listed below:

Mol	Chain	Res	Type	Atoms	Z	Observed(°)	Ideal(°)
2	A	501	AMP	C1'-N9-C4	11.76	147.31	126.64
2	C	501	AMP	C1'-N9-C4	10.96	145.89	126.64
2	B	501	AMP	C1'-N9-C4	10.93	145.85	126.64
2	C	501	AMP	C5-C6-N6	9.40	134.64	120.35

*Continued on next page...*

*Continued from previous page...*

Mol	Chain	Res	Type	Atoms	Z	Observed(°)	Ideal(°)
2	B	501	AMP	C5-C6-N6	8.91	133.89	120.35

There are no chirality outliers.

5 of 8 torsion outliers are listed below:

Mol	Chain	Res	Type	Atoms
2	A	501	AMP	C5'-O5'-P-O2P
2	A	501	AMP	O4'-C4'-C5'-O5'
2	A	501	AMP	C3'-C4'-C5'-O5'
2	B	501	AMP	O4'-C4'-C5'-O5'
2	B	501	AMP	C3'-C4'-C5'-O5'

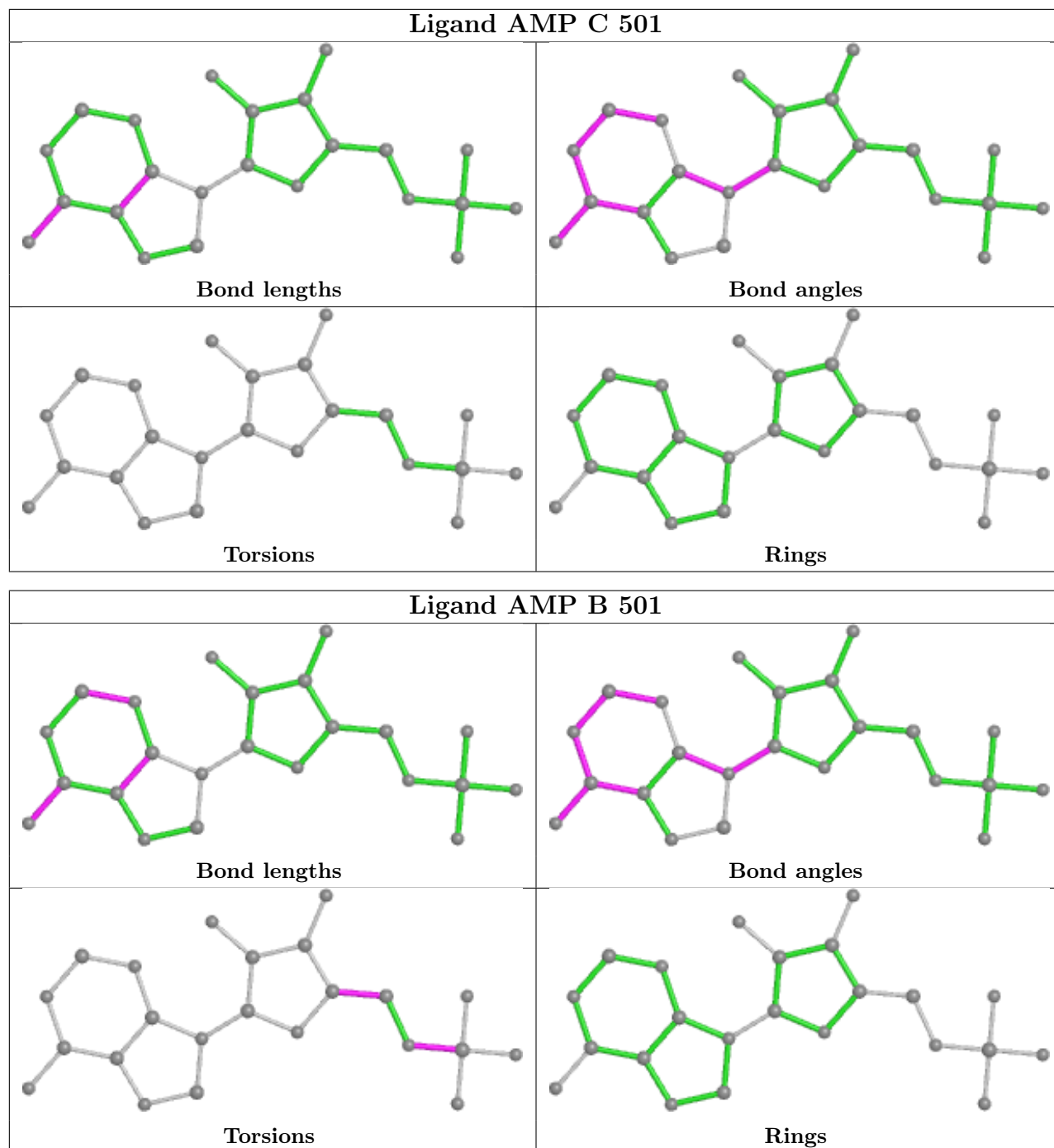
There are no ring outliers.

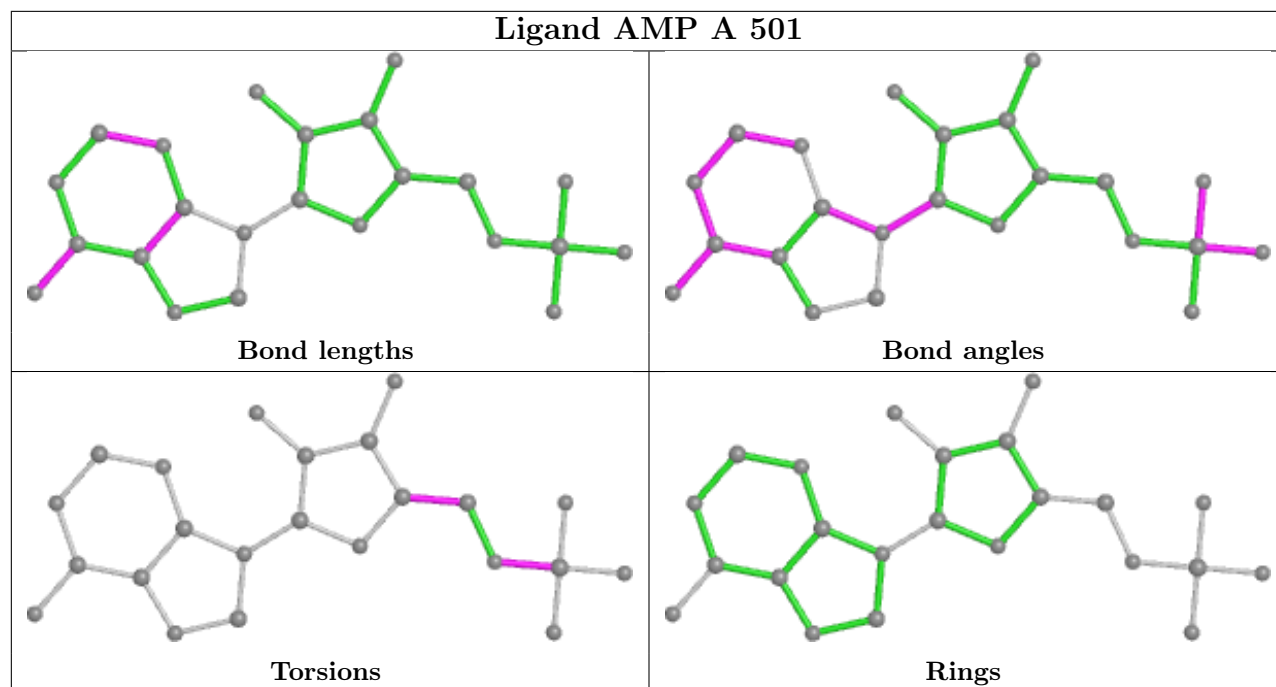
5 monomers are involved in 12 short contacts:

Mol	Chain	Res	Type	Clashes	Symm-Clashes
3	E	301	PO4	4	0
2	C	501	AMP	1	0
3	A	502	PO4	1	0
3	F	301	PO4	4	0
2	B	501	AMP	2	0

The following is a two-dimensional graphical depiction of Mogul quality analysis of bond lengths, bond angles, torsion angles, and ring geometry for all instances of the Ligand of Interest. In addition, ligands with molecular weight > 250 and outliers as shown on the validation Tables will also be included. For torsion angles, if less than 5% of the Mogul distribution of torsion angles is within 10 degrees of the torsion angle in question, then that torsion angle is considered an outlier. Any bond that is central to one or more torsion angles identified as an outlier by Mogul will be highlighted in the graph. For rings, the root-mean-square deviation (RMSD) between the ring in question and similar rings identified by Mogul is calculated over all ring torsion angles. If the average RMSD is greater than 60 degrees and the minimal RMSD between the ring in question and any Mogul-identified rings is also greater than 60 degrees, then that ring is considered an outlier. The outliers are highlighted in purple. The color gray indicates Mogul did not find sufficient equivalents in the CSD to analyse the geometry.







## 5.7 Other polymers [i](#)

There are no such residues in this entry.

## 5.8 Polymer linkage issues [i](#)

There are no chain breaks in this entry.

## 6 Fit of model and data [i](#)

### 6.1 Protein, DNA and RNA chains [i](#)

In the following table, the column labelled ‘#RSRZ > 2’ contains the number (and percentage) of RSRZ outliers, followed by percent RSRZ outliers for the chain as percentile scores relative to all X-ray entries and entries of similar resolution. The OWAB column contains the minimum, median, 95<sup>th</sup> percentile and maximum values of the occupancy-weighted average B-factor per residue. The column labelled ‘Q < 0.9’ lists the number of (and percentage) of residues with an average occupancy less than 0.9.

Mol	Chain	Analysed	<RSRZ>	#RSRZ>2	OWAB(Å <sup>2</sup> )	Q<0.9
1	A	256/286 (89%)	-0.09	4 (1%) 72 59	58, 106, 151, 176	0
1	B	252/286 (88%)	-0.29	0 100 100	48, 78, 109, 140	0
1	C	256/286 (89%)	-0.26	0 100 100	43, 72, 107, 129	0
1	D	186/286 (65%)	0.13	8 (4%) 35 21	51, 118, 159, 184	0
1	E	244/286 (85%)	-0.12	6 (2%) 57 43	44, 85, 135, 167	0
1	F	199/286 (69%)	0.08	8 (4%) 38 24	52, 120, 171, 185	0
All	All	1393/1716 (81%)	-0.11	26 (1%) 66 53	43, 87, 153, 185	0

The worst 5 of 26 RSRZ outliers are listed below:

Mol	Chain	Res	Type	RSRZ
1	E	125	ILE	5.9
1	F	24	ALA	4.5
1	A	119	ALA	3.6
1	D	163	GLN	3.4
1	A	46	ASN	2.9

### 6.2 Non-standard residues in protein, DNA, RNA chains [i](#)

There are no non-standard protein/DNA/RNA residues in this entry.

### 6.3 Carbohydrates [i](#)

There are no monosaccharides in this entry.

## 6.4 Ligands

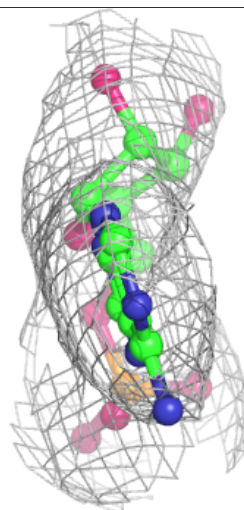
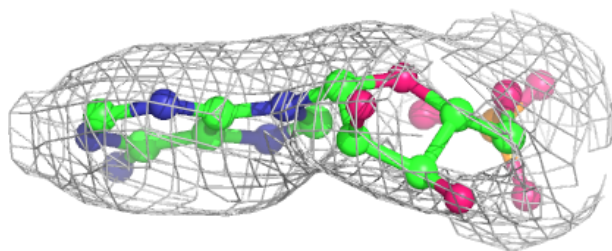
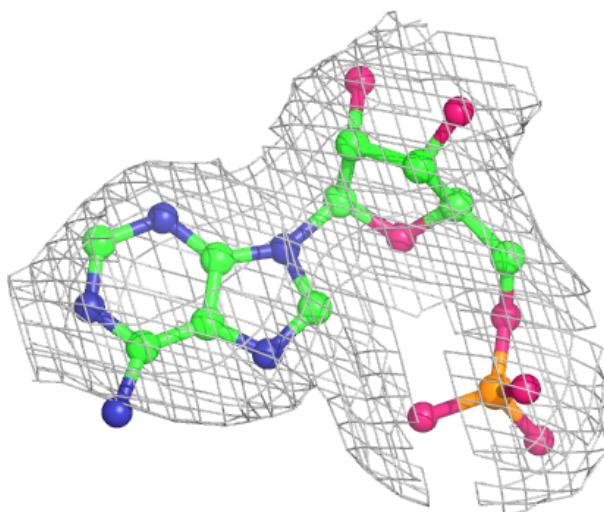
In the following table, the Atoms column lists the number of modelled atoms in the group and the number defined in the chemical component dictionary. The B-factors column lists the minimum, median, 95<sup>th</sup> percentile and maximum values of B factors of atoms in the group. The column labelled 'Q<0.9' lists the number of atoms with occupancy less than 0.9.

Mol	Type	Chain	Res	Atoms	RSCC	RSR	B-factors(Å <sup>2</sup> )	Q<0.9
3	PO4	F	301	5/5	0.60	0.55	83,102,109,117	5
3	PO4	E	301	5/5	0.79	0.35	117,125,127,140	5
3	PO4	D	301	5/5	0.84	0.27	96,102,104,105	5
3	PO4	B	502	5/5	0.85	0.37	112,113,115,126	5
3	PO4	A	502	5/5	0.86	0.38	113,116,117,117	5
3	PO4	C	502	5/5	0.88	0.34	105,107,114,119	5
2	AMP	A	501	23/23	0.93	0.15	73,79,89,103	0
2	AMP	B	501	23/23	0.94	0.17	73,97,133,140	0
2	AMP	C	501	23/23	0.94	0.15	54,73,89,110	0

The following is a graphical depiction of the model fit to experimental electron density of all instances of the Ligand of Interest. In addition, ligands with molecular weight > 250 and outliers as shown on the geometry validation Tables will also be included. Each fit is shown from different orientation to approximate a three-dimensional view.

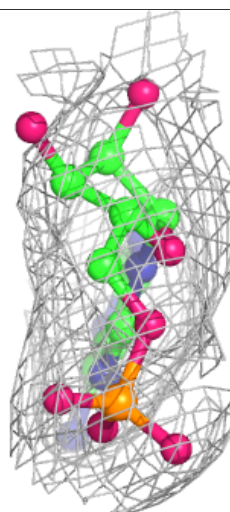
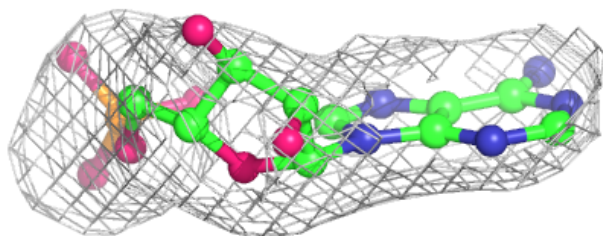
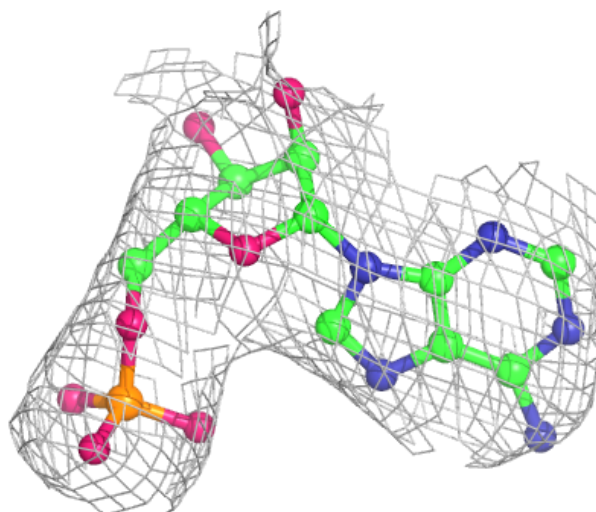
**Electron density around AMP A 501:**

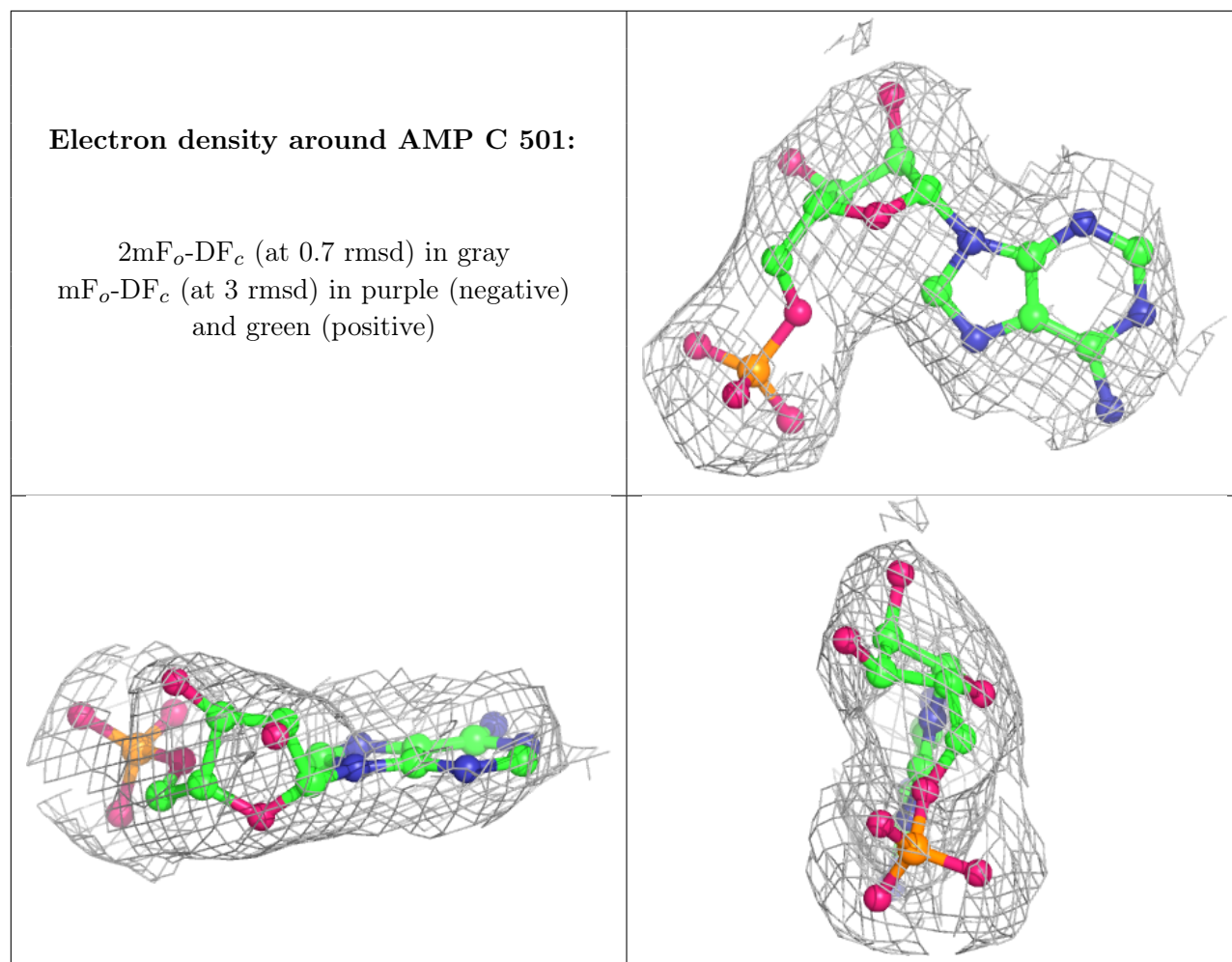
$2mF_o-DF_c$  (at 0.7 rmsd) in gray  
 $mF_o-DF_c$  (at 3 rmsd) in purple (negative)  
and green (positive)



**Electron density around AMP B 501:**

$2mF_o-DF_c$  (at 0.7 rmsd) in gray  
 $mF_o-DF_c$  (at 3 rmsd) in purple (negative)  
and green (positive)





## 6.5 Other polymers [i](#)

There are no such residues in this entry.