



Full wwPDB X-ray Structure Validation Report ⓘ

Oct 14, 2023 – 11:16 PM EDT

PDB ID : 7U9N
Title : S48A Horse Liver Alcohol Dehydrogenase in Complex with NADH and N-Cy
clohexylformamide
Authors : Zheng, C.; Boxer, S.G.
Deposited on : 2022-03-11
Resolution : 2.20 Å (reported)

This is a Full wwPDB X-ray Structure Validation Report for a publicly released PDB entry.

We welcome your comments at validation@mail.wwpdb.org

A user guide is available at

<https://www.wwpdb.org/validation/2017/XrayValidationReportHelp>

with specific help available everywhere you see the ⓘ symbol.

The types of validation reports are described at

<http://www.wwpdb.org/validation/2017/FAQs#types>.

The following versions of software and data (see [references ⓘ](#)) were used in the production of this report:

MolProbity : 4.02b-467
Mogul : 1.8.5 (274361), CSD as541be (2020)
Xtrriage (Phenix) : 1.13
EDS : 2.36
buster-report : 1.1.7 (2018)
Percentile statistics : 20191225.v01 (using entries in the PDB archive December 25th 2019)
Refmac : 5.8.0158
CCP4 : 7.0.044 (Gargrove)
Ideal geometry (proteins) : Engh & Huber (2001)
Ideal geometry (DNA, RNA) : Parkinson et al. (1996)
Validation Pipeline (wwPDB-VP) : 2.36

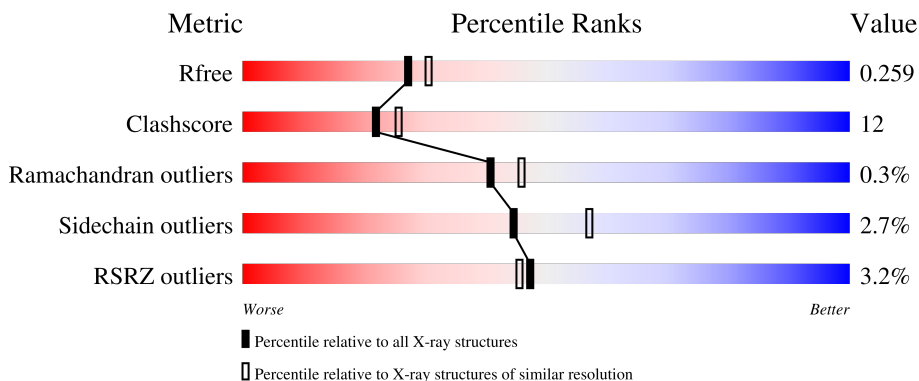
1 Overall quality at a glance

The following experimental techniques were used to determine the structure:

X-RAY DIFFRACTION

The reported resolution of this entry is 2.20 Å.

Percentile scores (ranging between 0-100) for global validation metrics of the entry are shown in the following graphic. The table shows the number of entries on which the scores are based.



Metric	Whole archive (#Entries)	Similar resolution (#Entries, resolution range(Å))
R_{free}	130704	4898 (2.20-2.20)
Clashscore	141614	5594 (2.20-2.20)
Ramachandran outliers	138981	5503 (2.20-2.20)
Sidechain outliers	138945	5504 (2.20-2.20)
RSRZ outliers	127900	4800 (2.20-2.20)

The table below summarises the geometric issues observed across the polymeric chains and their fit to the electron density. The red, orange, yellow and green segments of the lower bar indicate the fraction of residues that contain outliers for ≥ 3 , 2, 1 and 0 types of geometric quality criteria respectively. A grey segment represents the fraction of residues that are not modelled. The numeric value for each fraction is indicated below the corresponding segment, with a dot representing fractions $\leq 5\%$. The upper red bar (where present) indicates the fraction of residues that have poor fit to the electron density. The numeric value is given above the bar.

Mol	Chain	Length	Quality of chain
1	A	377	
1	B	377	
1	C	377	
1	D	377	

2 Entry composition [i](#)

There are 5 unique types of molecules in this entry. The entry contains 11622 atoms, of which 0 are hydrogens and 0 are deuteriums.

In the tables below, the ZeroOcc column contains the number of atoms modelled with zero occupancy, the AltConf column contains the number of residues with at least one atom in alternate conformation and the Trace column contains the number of residues modelled with at most 2 atoms.

- Molecule 1 is a protein called Alcohol dehydrogenase E chain.

Mol	Chain	Residues	Atoms					ZeroOcc	AltConf	Trace
			Total	C	N	O	S			
1	A	374	2784	1769	472	520	23	0	0	0
1	B	374	2784	1769	472	520	23	0	0	0
1	C	374	2784	1769	472	520	23	0	0	0
1	D	374	2784	1769	472	520	23	0	0	0

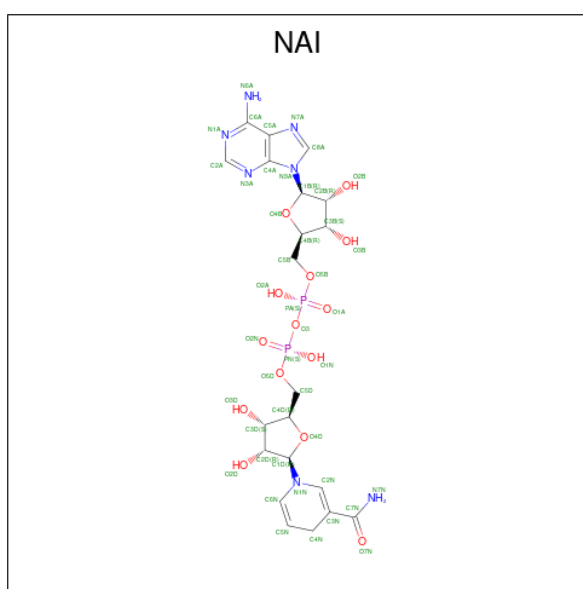
There are 16 discrepancies between the modelled and reference sequences:

Chain	Residue	Modelled	Actual	Comment	Reference
A	-2	GLY	-	expression tag	UNP P00327
A	-1	ALA	-	expression tag	UNP P00327
A	0	GLY	-	expression tag	UNP P00327
A	48	ALA	SER	engineered mutation	UNP P00327
B	-2	GLY	-	expression tag	UNP P00327
B	-1	ALA	-	expression tag	UNP P00327
B	0	GLY	-	expression tag	UNP P00327
B	48	ALA	SER	engineered mutation	UNP P00327
C	-2	GLY	-	expression tag	UNP P00327
C	-1	ALA	-	expression tag	UNP P00327
C	0	GLY	-	expression tag	UNP P00327
C	48	ALA	SER	engineered mutation	UNP P00327
D	-2	GLY	-	expression tag	UNP P00327
D	-1	ALA	-	expression tag	UNP P00327
D	0	GLY	-	expression tag	UNP P00327
D	48	ALA	SER	engineered mutation	UNP P00327

- Molecule 2 is ZINC ION (three-letter code: ZN) (formula: Zn).

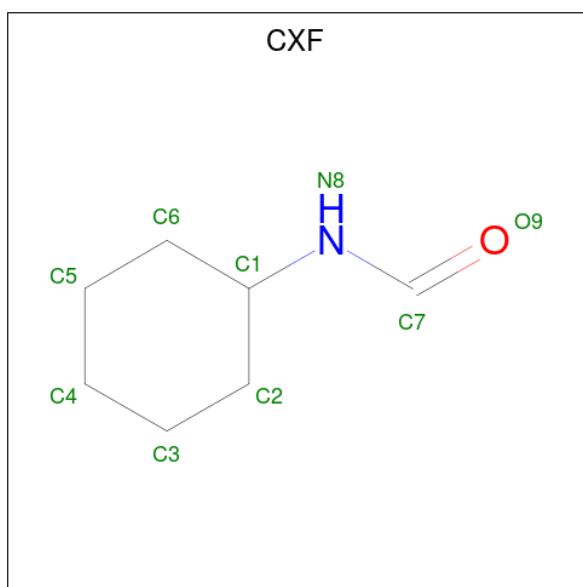
Mol	Chain	Residues	Atoms		ZeroOcc	AltConf
2	A	2	Total	Zn	0	0
			2	2		
2	B	2	Total	Zn	0	0
			2	2		
2	C	2	Total	Zn	0	0
			2	2		
2	D	2	Total	Zn	0	0
			2	2		

- Molecule 3 is 1,4-DIHYDRONICOTINAMIDE ADENINE DINUCLEOTIDE (three-letter code: NAI) (formula: C₂₁H₂₉N₇O₁₄P₂).



Mol	Chain	Residues	Atoms				ZeroOcc	AltConf	
3	A	1	Total	C	N	O	P	0	0
			44	21	7	14	2		
3	B	1	Total	C	N	O	P	0	0
			44	21	7	14	2		
3	C	1	Total	C	N	O	P	0	0
			44	21	7	14	2		
3	D	1	Total	C	N	O	P	0	0
			44	21	7	14	2		

- Molecule 4 is CYCLOHEXYLFORMAMIDE (three-letter code: CXF) (formula: C₇H₁₃NO) (labeled as "Ligand of Interest" by depositor).



Mol	Chain	Residues	Atoms				ZeroOcc	AltConf
4	A	1	Total	C	N	O	0	0
			9	7	1	1		
4	B	1	Total	C	N	O	0	0
			9	7	1	1		
4	C	1	Total	C	N	O	0	0
			9	7	1	1		
4	D	1	Total	C	N	O	0	0
			9	7	1	1		

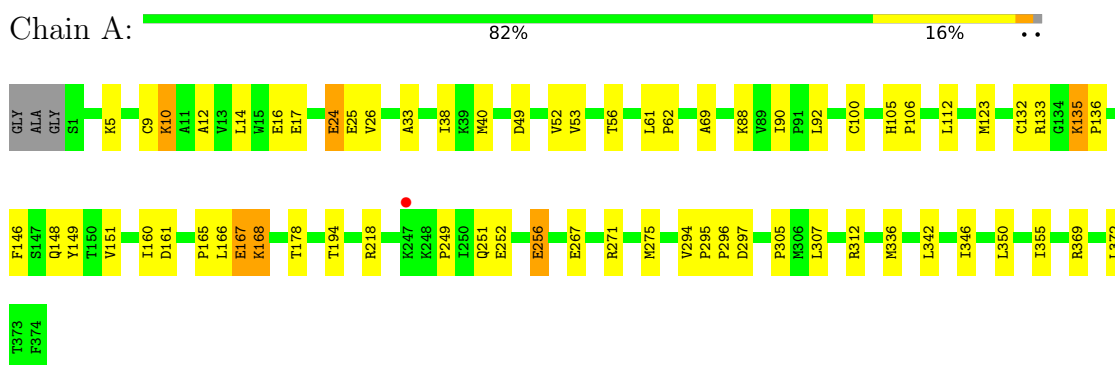
- Molecule 5 is water.

Mol	Chain	Residues	Atoms		ZeroOcc	AltConf
5	A	87	Total	O	0	0
			87	87		
5	B	78	Total	O	0	0
			78	78		
5	C	54	Total	O	0	0
			54	54		
5	D	47	Total	O	0	0
			47	47		

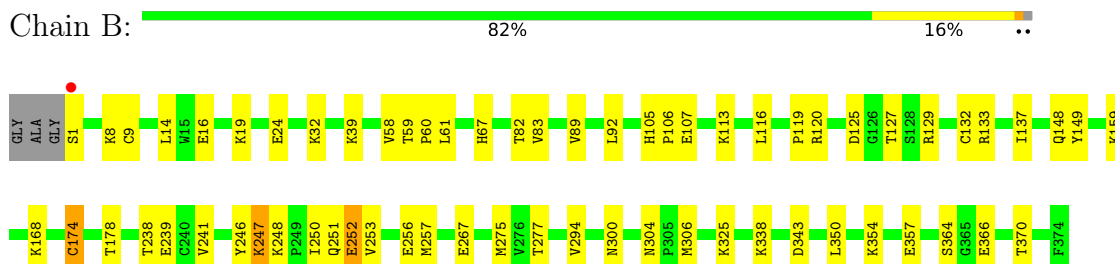
3 Residue-property plots

These plots are drawn for all protein, RNA, DNA and oligosaccharide chains in the entry. The first graphic for a chain summarises the proportions of the various outlier classes displayed in the second graphic. The second graphic shows the sequence view annotated by issues in geometry and electron density. Residues are color-coded according to the number of geometric quality criteria for which they contain at least one outlier: green = 0, yellow = 1, orange = 2 and red = 3 or more. A red dot above a residue indicates a poor fit to the electron density ($RSRZ > 2$). Stretches of 2 or more consecutive residues without any outlier are shown as a green connector. Residues present in the sample, but not in the model, are shown in grey.

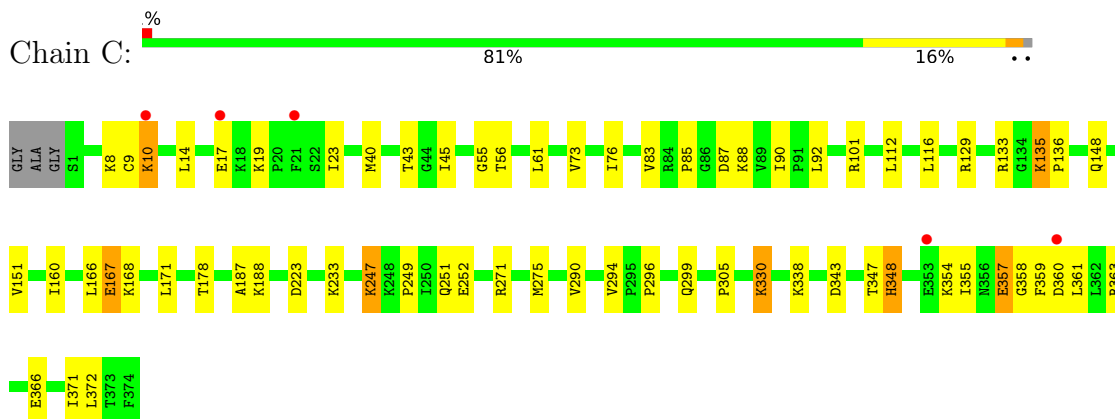
- Molecule 1: Alcohol dehydrogenase E chain



- Molecule 1: Alcohol dehydrogenase E chain

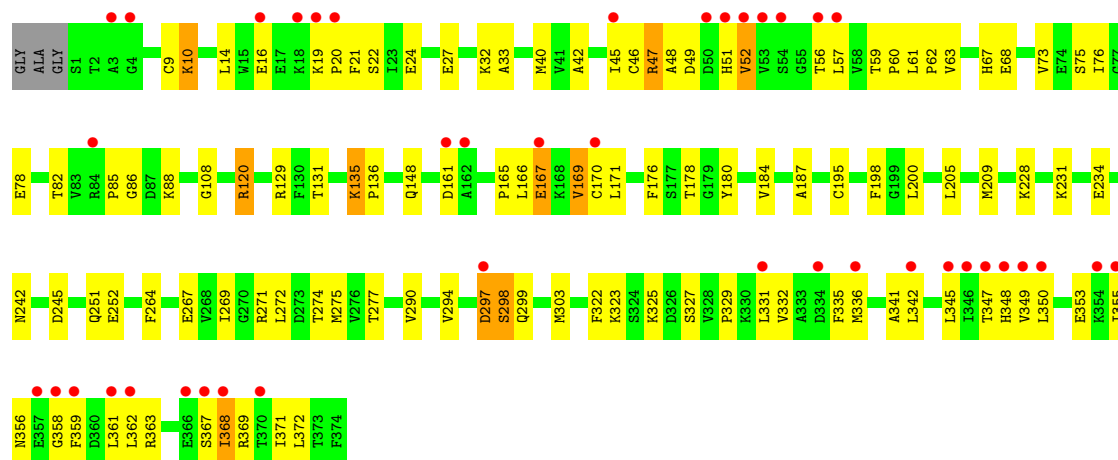


- Molecule 1: Alcohol dehydrogenase E chain



- Molecule 1: Alcohol dehydrogenase E chain

Chain D: 11% 69% 27%



4 Data and refinement statistics i

Property	Value	Source
Space group	P 1	Depositor
Cell constants a, b, c, α , β , γ	54.91Å 68.66Å 94.40Å 89.65° 76.00° 88.99°	Depositor
Resolution (Å)	35.93 – 2.20 38.13 – 2.20	Depositor EDS
% Data completeness (in resolution range)	90.5 (35.93-2.20) 83.3 (38.13-2.20)	Depositor EDS
R_{merge}	0.13	Depositor
R_{sym}	(Not available)	Depositor
$\langle I/\sigma(I) \rangle$ ¹	1.03 (at 2.20Å)	Xtrriage
Refinement program	PHENIX 1.18.2_3874	Depositor
R, R_{free}	0.213 , 0.259 0.213 , 0.259	Depositor DCC
R_{free} test set	3130 reflections (5.07%)	wwPDB-VP
Wilson B-factor (Å ²)	36.8	Xtrriage
Anisotropy	0.346	Xtrriage
Bulk solvent k_{sol} (e/Å ³), B_{sol} (Å ²)	0.33 , 36.5	EDS
L-test for twinning ²	$\langle L \rangle = 0.52$, $\langle L^2 \rangle = 0.35$	Xtrriage
Estimated twinning fraction	0.156 for -h,k,-l	Xtrriage
F_o, F_c correlation	0.95	EDS
Total number of atoms	11622	wwPDB-VP
Average B, all atoms (Å ²)	51.0	wwPDB-VP

Xtrriage's analysis on translational NCS is as follows: *The analyses of the Patterson function reveals a significant off-origin peak that is 27.27 % of the origin peak, indicating pseudo-translational symmetry. The chance of finding a peak of this or larger height randomly in a structure without pseudo-translational symmetry is equal to 2.2654e-03. The detected translational NCS is most likely also responsible for the elevated intensity ratio.*

¹Intensities estimated from amplitudes.

²Theoretical values of $\langle |L| \rangle$, $\langle L^2 \rangle$ for acentric reflections are 0.5, 0.333 respectively for untwinned datasets, and 0.375, 0.2 for perfectly twinned datasets.

5 Model quality [i](#)

5.1 Standard geometry [i](#)

Bond lengths and bond angles in the following residue types are not validated in this section: CXF, ZN, NAI

The Z score for a bond length (or angle) is the number of standard deviations the observed value is removed from the expected value. A bond length (or angle) with $|Z| > 5$ is considered an outlier worth inspection. RMSZ is the root-mean-square of all Z scores of the bond lengths (or angles).

Mol	Chain	Bond lengths		Bond angles	
		RMSZ	# Z >5	RMSZ	# Z >5
1	A	0.53	0/2836	0.71	0/3833
1	B	0.49	0/2836	0.66	0/3833
1	C	0.58	0/2836	0.76	0/3833
1	D	0.53	0/2836	0.79	0/3833
All	All	0.53	0/11344	0.73	0/15332

There are no bond length outliers.

There are no bond angle outliers.

There are no chirality outliers.

There are no planarity outliers.

5.2 Too-close contacts [i](#)

In the following table, the Non-H and H(model) columns list the number of non-hydrogen atoms and hydrogen atoms in the chain respectively. The H(added) column lists the number of hydrogen atoms added and optimized by MolProbity. The Clashes column lists the number of clashes within the asymmetric unit, whereas Symm-Clashes lists symmetry-related clashes.

Mol	Chain	Non-H	H(model)	H(added)	Clashes	Symm-Clashes
1	A	2784	0	2848	46	0
1	B	2784	0	2848	52	0
1	C	2784	0	2848	66	0
1	D	2784	0	2848	109	0
2	A	2	0	0	0	0
2	B	2	0	0	0	0
2	C	2	0	0	0	0
2	D	2	0	0	0	0
3	A	44	0	26	3	0

Continued on next page...

Continued from previous page...

Mol	Chain	Non-H	H(model)	H(added)	Clashes	Symm-Clashes
3	B	44	0	26	6	0
3	C	44	0	27	3	0
3	D	44	0	25	3	0
4	A	9	0	13	0	0
4	B	9	0	13	3	0
4	C	9	0	13	1	0
4	D	9	0	13	0	0
5	A	87	0	0	4	0
5	B	78	0	0	5	0
5	C	54	0	0	5	0
5	D	47	0	0	3	0
All	All	11622	0	11548	271	0

The all-atom clashscore is defined as the number of clashes found per 1000 atoms (including hydrogen atoms). The all-atom clashscore for this structure is 12.

All (271) close contacts within the same asymmetric unit are listed below, sorted by their clash magnitude.

Atom-1	Atom-2	Interatomic distance (Å)	Clash overlap (Å)
1:D:51:HIS:CG	1:D:56:THR:HG21	1.76	1.19
1:C:10:LYS:CD	1:C:23:ILE:HG23	1.73	1.17
1:D:170:CYS:SG	1:D:371:ILE:HD12	1.87	1.14
1:C:10:LYS:HD3	1:C:23:ILE:CG2	1.80	1.11
1:D:51:HIS:CD2	1:D:56:THR:HG21	1.84	1.11
1:C:10:LYS:NZ	1:C:23:ILE:HG22	1.69	1.07
1:D:46:CYS:SG	1:D:369:ARG:NH2	2.26	1.06
1:D:51:HIS:CG	1:D:56:THR:CG2	2.38	1.06
1:C:10:LYS:CD	1:C:23:ILE:CG2	2.36	1.03
1:C:10:LYS:HZ2	1:C:23:ILE:HG22	1.20	0.98
1:C:10:LYS:HD3	1:C:23:ILE:HG23	0.96	0.96
1:C:88:LYS:HE2	1:C:166:LEU:HD21	1.49	0.94
1:D:47:ARG:HH21	1:D:362:LEU:CD2	1.82	0.93
1:B:247:LYS:HE3	1:B:247:LYS:HA	1.53	0.89
1:D:47:ARG:HH21	1:D:362:LEU:HD21	1.39	0.87
1:B:253:VAL:HG12	1:B:257:MET:HE3	1.58	0.86
1:D:10:LYS:HG2	1:D:148:GLN:HG2	1.60	0.83
1:B:247:LYS:HA	1:B:247:LYS:CE	2.08	0.83
1:D:51:HIS:CE1	1:D:56:THR:HG21	2.14	0.82
1:B:248:LYS:HZ2	1:B:253:VAL:HG22	1.43	0.81
1:D:51:HIS:ND1	1:D:56:THR:HG21	1.93	0.81
1:D:231:LYS:HA	1:D:234:GLU:HB2	1.66	0.77

Continued on next page...

Continued from previous page...

Atom-1	Atom-2	Interatomic distance (Å)	Clash overlap (Å)
1:D:51:HIS:CD2	1:D:56:THR:CG2	2.66	0.77
1:D:272:LEU:HD11	1:D:299:GLN:HB3	1.68	0.75
1:C:17:GLU:OE1	1:C:55:GLY:HA2	1.86	0.75
1:C:10:LYS:NZ	1:C:23:ILE:CG2	2.51	0.72
1:C:17:GLU:OE1	1:C:55:GLY:CA	2.37	0.72
1:B:248:LYS:NZ	1:B:253:VAL:HG22	2.04	0.72
1:C:347:THR:C	1:C:348:HIS:HD1	1.93	0.70
1:D:166:LEU:HA	1:D:169:VAL:CG2	2.22	0.69
1:C:188:LYS:HG3	1:C:188:LYS:O	1.91	0.68
1:A:168:LYS:O	1:A:342:LEU:HD13	1.94	0.68
1:B:178:THR:HG21	3:B:403:NAI:H4N	1.76	0.67
1:D:88:LYS:NZ	5:D:503:HOH:O	2.21	0.67
1:D:51:HIS:NE2	1:D:56:THR:HG21	2.08	0.67
1:D:271:ARG:HB2	1:D:274:THR:HG22	1.77	0.67
1:A:26:VAL:HG12	1:A:132:CYS:HB2	1.75	0.67
1:B:241:VAL:HG11	1:B:257:MET:HE1	1.76	0.67
1:C:112:LEU:N	5:C:503:HOH:O	2.28	0.67
1:C:73:VAL:HG21	1:C:83:VAL:HG21	1.77	0.66
1:C:338:LYS:O	1:C:338:LYS:HG3	1.95	0.66
1:D:47:ARG:NH2	1:D:362:LEU:HG	2.09	0.66
1:A:194:THR:HG23	1:A:218:ARG:HB2	1.77	0.66
1:B:16:GLU:HG3	1:B:19:LYS:HG3	1.78	0.66
1:A:49:ASP:O	1:A:52:VAL:HG12	1.96	0.65
1:C:8:LYS:O	1:C:8:LYS:HG3	1.97	0.65
1:D:10:LYS:HG2	1:D:148:GLN:CG	2.27	0.65
1:D:47:ARG:HH21	1:D:362:LEU:CG	2.10	0.65
1:D:356:ASN:HA	1:D:359:PHE:HB3	1.77	0.64
1:D:47:ARG:NH2	1:D:362:LEU:CD2	2.59	0.64
1:D:167:GLU:O	1:D:170:CYS:SG	2.54	0.64
1:D:170:CYS:SG	1:D:371:ILE:HG23	2.38	0.63
1:A:167:GLU:CD	1:A:167:GLU:H	2.00	0.63
1:D:51:HIS:CB	1:D:56:THR:HB	2.28	0.62
1:B:105:HIS:HD2	1:B:107:GLU:H	1.47	0.62
1:D:51:HIS:CG	1:D:56:THR:CB	2.82	0.62
1:D:167:GLU:O	1:D:371:ILE:HG21	2.00	0.62
1:D:48:ALA:HB3	1:D:67:HIS:CE1	2.36	0.61
1:B:354:LYS:HD3	1:B:357:GLU:OE2	2.00	0.61
1:D:68:GLU:HG2	1:D:170:CYS:O	2.00	0.61
1:D:51:HIS:ND1	1:D:56:THR:CB	2.64	0.61
1:D:348:HIS:ND1	1:D:361:LEU:HD21	2.16	0.61
1:D:347:THR:OG1	1:D:367:SER:HB2	2.01	0.61

Continued on next page...

Continued from previous page...

Atom-1	Atom-2	Interatomic distance (Å)	Clash overlap (Å)
1:C:347:THR:O	1:C:348:HIS:ND1	2.29	0.60
1:C:168:LYS:NZ	1:C:343:ASP:OD2	2.31	0.60
1:D:251:GLN:HG3	1:D:252:GLU:N	2.17	0.59
1:A:178:THR:HG21	3:A:403:NAI:H4N	1.85	0.59
1:A:24:GLU:OE1	1:A:24:GLU:HA	2.02	0.59
1:D:209:MET:HE1	1:D:341:ALA:O	2.02	0.58
1:C:116:LEU:HD21	4:C:404:CXF:H41	1.84	0.58
1:D:120:ARG:HH21	1:D:120:ARG:HB3	1.68	0.58
1:B:9:CYS:HB2	1:B:148:GLN:HB2	1.85	0.58
1:A:355:ILE:HG13	1:A:372:LEU:HD11	1.86	0.57
1:C:271:ARG:O	1:C:275:MET:HG3	2.04	0.57
1:B:252:GLU:O	1:B:256:GLU:HG2	2.04	0.57
1:D:51:HIS:CG	1:D:56:THR:HB	2.40	0.57
1:D:51:HIS:ND1	1:D:56:THR:CG2	2.62	0.57
1:D:59:THR:OG1	1:D:60:PRO:HD2	2.04	0.57
1:C:10:LYS:HD2	1:C:23:ILE:CG2	2.31	0.56
1:D:348:HIS:CG	1:D:361:LEU:HD21	2.40	0.56
1:D:359:PHE:HE1	1:D:363:ARG:HH21	1.54	0.56
1:A:249:PRO:HG2	1:A:252:GLU:OE1	2.06	0.56
1:B:253:VAL:HG12	1:B:257:MET:CE	2.33	0.56
1:A:33:ALA:O	5:A:501:HOH:O	2.18	0.55
1:B:32:LYS:HD3	1:B:129:ARG:NH2	2.21	0.55
1:B:105:HIS:CD2	1:B:107:GLU:H	2.24	0.55
1:C:45:ILE:HD11	1:C:372:LEU:HD11	1.88	0.55
1:D:205:LEU:O	1:D:209:MET:HG3	2.07	0.55
1:C:83:VAL:HG23	1:C:87:ASP:HB2	1.88	0.55
1:D:165:PRO:O	1:D:169:VAL:HG22	2.07	0.55
1:A:9:CYS:HB2	1:A:148:GLN:HG3	1.89	0.54
1:C:10:LYS:HZ3	1:C:23:ILE:HG22	1.67	0.54
1:D:355:ILE:HG13	1:D:372:LEU:HD11	1.90	0.54
1:C:14:LEU:HD23	1:C:61:LEU:HD11	1.88	0.54
1:D:178:THR:HG21	3:D:403:NAI:H4N	1.90	0.54
1:B:120:ARG:NH2	5:B:508:HOH:O	2.40	0.53
1:C:294:VAL:HG23	3:C:403:NAI:H1D	1.89	0.53
1:D:14:LEU:HD21	1:D:16:GLU:O	2.08	0.53
1:B:39:LYS:HB2	1:B:149:TYR:CE2	2.43	0.53
1:D:49:ASP:O	1:D:52:VAL:HB	2.07	0.53
1:B:253:VAL:O	1:B:257:MET:HG3	2.08	0.53
1:C:178:THR:HG21	3:C:403:NAI:H4N	1.91	0.53
3:B:403:NAI:O2A	5:B:501:HOH:O	2.19	0.53
1:D:345:LEU:HD22	1:D:368:ILE:HG21	1.90	0.53

Continued on next page...

Continued from previous page...

Atom-1	Atom-2	Interatomic distance (Å)	Clash overlap (Å)
1:A:40:MET:CE	1:A:69:ALA:HB1	2.39	0.53
1:A:297:ASP:OD1	1:B:338:LYS:HD2	2.09	0.53
1:B:116:LEU:HD21	4:B:404:CMX:H41	1.90	0.53
1:C:56:THR:HG23	1:C:296:PRO:HA	1.91	0.52
1:A:161:ASP:N	5:A:510:HOH:O	2.43	0.52
1:C:10:LYS:CE	1:C:23:ILE:CG2	2.87	0.52
1:D:9:CYS:HB2	1:D:148:GLN:HG3	1.91	0.52
1:A:133:ARG:N	5:A:508:HOH:O	2.41	0.52
1:D:76:ILE:HG12	1:D:85:PRO:HD3	1.92	0.52
1:A:168:LYS:HG2	1:A:346:ILE:CD1	2.39	0.52
1:D:32:LYS:HD2	1:D:129:ARG:NH2	2.25	0.52
1:D:82:THR:HG21	1:D:325:LYS:NZ	2.25	0.52
1:B:247:LYS:CE	1:B:247:LYS:CA	2.84	0.51
1:C:338:LYS:HA	5:C:526:HOH:O	2.09	0.51
1:C:9:CYS:HB2	1:C:148:GLN:HB2	1.93	0.51
1:D:349:VAL:O	1:D:350:LEU:HD23	2.10	0.51
1:D:353:GLU:CD	1:D:353:GLU:H	2.13	0.51
1:C:92:LEU:HA	5:C:512:HOH:O	2.09	0.51
1:B:83:VAL:HG12	1:B:159:LYS:HB2	1.93	0.51
1:D:329:PRO:O	1:D:332:VAL:HG22	2.10	0.51
1:A:56:THR:HG23	1:A:296:PRO:HA	1.93	0.51
1:A:88:LYS:HD3	1:A:166:LEU:HD11	1.93	0.51
1:A:369:ARG:NH1	3:A:403:NAI:O1N	2.37	0.51
1:D:161:ASP:CB	1:D:336:MET:HE1	2.41	0.51
1:C:73:VAL:HG21	1:C:83:VAL:CG2	2.41	0.50
1:D:271:ARG:HB2	1:D:274:THR:CG2	2.40	0.50
1:A:90:ILE:HD12	1:A:160:ILE:HG21	1.93	0.50
1:C:358:GLY:HA2	1:C:361:LEU:HD23	1.93	0.50
1:B:14:LEU:HD23	1:B:61:LEU:HD11	1.93	0.50
1:D:170:CYS:SG	1:D:371:ILE:CG2	2.99	0.50
1:D:14:LEU:CD2	1:D:61:LEU:HD11	2.42	0.50
1:A:14:LEU:HD23	1:A:61:LEU:HD11	1.94	0.50
1:B:58:VAL:O	1:B:119:PRO:HG2	2.12	0.50
1:C:354:LYS:HG2	1:C:357:GLU:HB2	1.94	0.50
1:D:294:VAL:HG23	3:D:403:NAI:H1D	1.94	0.50
1:B:364:SER:OG	1:B:366:GLU:OE1	2.29	0.49
1:A:61:LEU:HD13	1:A:62:PRO:HA	1.94	0.49
1:A:10:LYS:HB2	1:A:148:GLN:HE21	1.78	0.49
1:B:304:ASN:HD21	1:B:306:MET:HB2	1.77	0.49
1:A:295:PRO:HG3	1:C:305:PRO:HG2	1.94	0.49
1:C:359:PHE:HB3	1:C:363:ARG:NH2	2.28	0.49

Continued on next page...

Continued from previous page...

Atom-1	Atom-2	Interatomic distance (Å)	Clash overlap (Å)
1:B:168:LYS:NZ	1:B:343:ASP:OD2	2.39	0.48
1:C:360:ASP:N	1:C:360:ASP:OD1	2.43	0.48
1:D:63:VAL:O	5:D:501:HOH:O	2.19	0.48
1:C:88:LYS:HE2	1:C:166:LEU:CD2	2.34	0.48
1:D:205:LEU:HD21	1:D:231:LYS:HB3	1.96	0.48
1:D:45:ILE:HD11	1:D:355:ILE:HG13	1.95	0.48
1:B:238:THR:C	1:B:239:GLU:HG3	2.34	0.47
1:D:75:SER:HA	1:D:85:PRO:HB3	1.96	0.47
1:A:40:MET:HE1	1:A:69:ALA:HB1	1.95	0.47
1:A:251:GLN:HG2	1:A:252:GLU:N	2.28	0.47
1:A:294:VAL:HG23	3:A:403:NAI:H1D	1.95	0.47
1:D:42:ALA:HA	1:D:372:LEU:O	2.14	0.47
1:D:60:PRO:O	5:D:502:HOH:O	2.20	0.47
1:A:88:LYS:HD3	1:A:166:LEU:HD21	1.94	0.47
1:C:347:THR:C	1:C:348:HIS:ND1	2.65	0.47
1:C:251:GLN:HG2	1:C:252:GLU:N	2.29	0.47
1:D:19:LYS:HG3	1:D:20:PRO:HD2	1.97	0.47
1:D:335:PHE:HE1	1:D:342:LEU:H	1.63	0.47
1:B:250:ILE:HA	1:B:253:VAL:HG23	1.96	0.46
1:D:198:PHE:O	1:D:269:ILE:HG13	2.15	0.46
1:B:106:PRO:HB2	1:C:247:LYS:NZ	2.30	0.46
1:C:23:ILE:HD11	1:C:355:ILE:HG22	1.97	0.46
1:D:195:CYS:HA	1:D:264:PHE:O	2.15	0.46
1:C:19:LYS:HA	1:C:19:LYS:HD2	1.64	0.46
1:D:187:ALA:HB2	1:D:290:VAL:HG21	1.97	0.46
1:A:267:GLU:HG3	1:A:275:MET:HA	1.98	0.46
1:D:355:ILE:HG23	1:D:356:ASN:OD1	2.15	0.46
1:D:73:VAL:HB	1:D:86:GLY:H	1.81	0.45
1:D:27:GLU:HB2	1:D:131:THR:HB	1.98	0.45
1:A:12:ALA:HB3	1:A:146:PHE:HB3	1.99	0.45
1:B:178:THR:HG21	3:B:403:NAI:C4N	2.46	0.45
1:B:267:GLU:HG3	1:B:275:MET:HA	1.98	0.45
1:A:10:LYS:H	1:A:148:GLN:HG3	1.82	0.45
1:D:242:ASN:O	1:D:245:ASP:HB2	2.16	0.45
1:A:100:CYS:HB2	1:A:112:LEU:HD12	1.98	0.44
1:A:105:HIS:CG	1:A:106:PRO:HD2	2.52	0.44
1:C:76:ILE:HG23	1:C:85:PRO:HD3	1.98	0.44
1:D:171:LEU:HB2	1:D:342:LEU:HD21	1.98	0.44
1:C:73:VAL:HG12	1:C:85:PRO:HA	2.00	0.44
1:B:132:CYS:HB3	1:B:137:ILE:HD11	2.00	0.44
1:B:174:CYS:SG	3:B:403:NAI:H5N	2.57	0.44

Continued on next page...

Continued from previous page...

Atom-1	Atom-2	Interatomic distance (Å)	Clash overlap (Å)
1:B:251:GLN:HB3	1:B:277:THR:HG23	2.00	0.44
1:D:251:GLN:HB3	1:D:277:THR:HG23	1.99	0.44
1:C:83:VAL:HG23	1:C:87:ASP:CB	2.47	0.44
1:A:9:CYS:O	1:A:25:GLU:HA	2.17	0.44
1:D:14:LEU:HD12	1:D:21:PHE:CE2	2.53	0.44
1:D:322:PHE:HD1	1:D:327:SER:HG	1.64	0.44
1:C:330:LYS:HB2	1:C:330:LYS:HE3	1.85	0.44
1:C:83:VAL:CG2	1:C:87:ASP:HB2	2.47	0.44
1:A:38:ILE:O	1:A:149:TYR:HA	2.18	0.43
1:D:33:ALA:CB	1:D:78:GLU:HG2	2.47	0.43
1:B:60:PRO:HD3	1:B:119:PRO:HB2	2.01	0.43
1:C:233:LYS:NZ	5:C:506:HOH:O	2.41	0.43
1:D:61:LEU:HD13	1:D:62:PRO:HA	2.01	0.43
1:D:267:GLU:HG3	1:D:275:MET:HG3	1.99	0.43
1:B:113:LYS:NZ	5:B:514:HOH:O	2.51	0.43
1:B:304:ASN:ND2	1:B:306:MET:HB2	2.33	0.43
1:D:345:LEU:HD23	1:D:345:LEU:HA	1.78	0.43
1:D:22:SER:O	1:D:24:GLU:HG2	2.19	0.43
1:D:267:GLU:OE2	1:D:274:THR:HG23	2.18	0.43
1:A:165:PRO:HD2	1:A:336:MET:HE3	1.99	0.43
1:B:67:HIS:CD2	4:B:404:CXF:H7	2.54	0.43
1:B:89:VAL:HG12	1:B:159:LYS:HA	2.00	0.43
1:C:135:LYS:HA	1:C:136:PRO:HD3	1.91	0.43
1:A:92:LEU:HA	5:A:529:HOH:O	2.19	0.43
1:A:305:PRO:HD2	1:C:299:GLN:O	2.19	0.43
3:B:403:NAI:H6N	3:B:403:NAI:H2D	1.70	0.43
1:B:92:LEU:HA	5:B:521:HOH:O	2.18	0.43
1:D:51:HIS:HB3	1:D:56:THR:HB	1.98	0.43
1:B:241:VAL:HG11	1:B:257:MET:CE	2.47	0.42
1:C:167:GLU:CD	1:C:167:GLU:N	2.73	0.42
1:D:47:ARG:O	1:D:51:HIS:N	2.48	0.42
1:D:169:VAL:C	1:D:171:LEU:H	2.23	0.42
1:B:300:ASN:HD22	1:D:303:MET:N	2.18	0.42
1:A:307:LEU:O	1:A:312:ARG:HD2	2.20	0.42
1:D:51:HIS:CB	1:D:56:THR:CG2	2.94	0.42
1:A:123:MET:HE1	1:A:151:VAL:HG12	2.01	0.42
1:D:33:ALA:HB2	1:D:78:GLU:HG2	2.01	0.42
1:D:180:TYR:O	1:D:184:VAL:HG22	2.19	0.42
1:B:82:THR:HG21	1:B:325:LYS:NZ	2.34	0.42
1:C:358:GLY:O	5:C:501:HOH:O	2.21	0.42
1:D:200:LEU:O	1:D:228:LYS:HD3	2.19	0.42

Continued on next page...

Continued from previous page...

Atom-1	Atom-2	Interatomic distance (Å)	Clash overlap (Å)
1:B:1:SER:N	5:B:506:HOH:O	2.35	0.42
1:C:129:ARG:CB	1:C:151:VAL:HG21	2.50	0.42
1:D:251:GLN:HG3	1:D:252:GLU:H	1.84	0.42
1:D:82:THR:HG21	1:D:325:LYS:HZ3	1.83	0.41
1:D:135:LYS:HA	1:D:136:PRO:HD3	1.81	0.41
3:D:403:NAI:H6N	3:D:403:NAI:H2D	1.82	0.41
1:A:350:LEU:O	1:A:372:LEU:HA	2.21	0.41
1:C:171:LEU:HD21	1:C:371:ILE:HD11	2.02	0.41
1:D:88:LYS:HG2	1:D:166:LEU:HD11	2.02	0.41
1:C:10:LYS:HB2	1:C:10:LYS:HE2	1.30	0.41
1:C:129:ARG:HG3	1:C:151:VAL:HG21	2.02	0.41
1:A:252:GLU:O	1:A:256:GLU:HB2	2.20	0.41
1:B:125:ASP:OD1	1:B:127:THR:OG1	2.36	0.41
1:D:108:GLY:O	1:D:323:LYS:NZ	2.49	0.41
1:C:187:ALA:HB2	1:C:290:VAL:HG21	2.02	0.41
1:D:51:HIS:ND1	1:D:56:THR:HB	2.33	0.41
1:D:299:GLN:HA	1:D:299:GLN:OE1	2.20	0.41
1:D:347:THR:HG1	1:D:367:SER:HB2	1.83	0.41
1:B:294:VAL:HG21	4:B:404:CXF:H52	2.02	0.41
1:D:51:HIS:CA	1:D:56:THR:HB	2.51	0.41
1:B:350:LEU:HD12	1:B:370:THR:HG21	2.02	0.41
1:C:90:ILE:HG13	1:C:160:ILE:HD13	2.02	0.41
1:C:167:GLU:CD	1:C:167:GLU:H	2.20	0.41
1:D:14:LEU:HB2	1:D:21:PHE:HD2	1.85	0.41
1:A:135:LYS:HG2	1:A:136:PRO:HD2	2.02	0.41
1:A:271:ARG:O	1:A:275:MET:HG3	2.21	0.41
1:C:43:THR:HG22	1:C:372:LEU:HB2	2.02	0.41
1:C:88:LYS:HG2	1:C:166:LEU:HD11	2.03	0.41
1:C:358:GLY:O	1:C:361:LEU:HB2	2.21	0.41
1:D:166:LEU:HA	1:D:169:VAL:HG23	2.02	0.41
1:B:24:GLU:OE1	1:B:133:ARG:NE	2.46	0.41
1:C:249:PRO:HB2	1:C:251:GLN:OE1	2.20	0.41
1:D:9:CYS:SG	1:D:148:GLN:HB2	2.61	0.41
1:A:168:LYS:HG2	1:A:346:ILE:HD12	2.03	0.40
1:A:17:GLU:HB2	1:A:53:VAL:O	2.22	0.40
1:B:178:THR:CG2	3:B:403:NAI:H4N	2.47	0.40
1:C:223:ASP:OD2	3:C:403:NAI:O2B	2.31	0.40
1:D:14:LEU:HD22	1:D:61:LEU:HD11	2.03	0.40
1:D:161:ASP:HB3	1:D:336:MET:HE1	2.02	0.40
1:D:331:LEU:HD23	1:D:331:LEU:HA	1.70	0.40
1:B:246:TYR:CE2	1:B:253:VAL:HG11	2.57	0.40

Continued on next page...

Continued from previous page...

Atom-1	Atom-2	Interatomic distance (Å)	Clash overlap (Å)
1:D:176:PHE:HB2	1:D:342:LEU:HD11	2.03	0.40
1:D:350:LEU:HD12	1:D:358:GLY:N	2.36	0.40
1:B:59:THR:O	1:B:61:LEU:HD22	2.21	0.40

There are no symmetry-related clashes.

5.3 Torsion angles [i](#)

5.3.1 Protein backbone [i](#)

In the following table, the Percentiles column shows the percent Ramachandran outliers of the chain as a percentile score with respect to all X-ray entries followed by that with respect to entries of similar resolution.

The Analysed column shows the number of residues for which the backbone conformation was analysed, and the total number of residues.

Mol	Chain	Analysed	Favoured	Allowed	Outliers	Percentiles	
1	A	372/377 (99%)	359 (96%)	13 (4%)	0	100	100
1	B	372/377 (99%)	359 (96%)	12 (3%)	1 (0%)	41	46
1	C	372/377 (99%)	357 (96%)	15 (4%)	0	100	100
1	D	372/377 (99%)	354 (95%)	15 (4%)	3 (1%)	19	19
All	All	1488/1508 (99%)	1429 (96%)	55 (4%)	4 (0%)	41	46

All (4) Ramachandran outliers are listed below:

Mol	Chain	Res	Type
1	D	298	SER
1	D	368	ILE
1	D	297	ASP
1	B	174	CYS

5.3.2 Protein sidechains [i](#)

In the following table, the Percentiles column shows the percent sidechain outliers of the chain as a percentile score with respect to all X-ray entries followed by that with respect to entries of similar resolution.

The Analysed column shows the number of residues for which the sidechain conformation was

analysed, and the total number of residues.

Mol	Chain	Analysed	Rotameric	Outliers	Percentiles	
1	A	307/307 (100%)	299 (97%)	8 (3%)	46	58
1	B	307/307 (100%)	304 (99%)	3 (1%)	76	86
1	C	307/307 (100%)	296 (96%)	11 (4%)	35	45
1	D	307/307 (100%)	296 (96%)	11 (4%)	35	45
All	All	1228/1228 (100%)	1195 (97%)	33 (3%)	44	57

All (33) residues with a non-rotameric sidechain are listed below:

Mol	Chain	Res	Type
1	A	5	LYS
1	A	10	LYS
1	A	16	GLU
1	A	24	GLU
1	A	135	LYS
1	A	167	GLU
1	A	168	LYS
1	A	256	GLU
1	B	8	LYS
1	B	247	LYS
1	B	252	GLU
1	C	10	LYS
1	C	40	MET
1	C	101	ARG
1	C	133	ARG
1	C	135	LYS
1	C	167	GLU
1	C	247	LYS
1	C	330	LYS
1	C	348	HIS
1	C	357	GLU
1	C	366	GLU
1	D	10	LYS
1	D	40	MET
1	D	47	ARG
1	D	52	VAL
1	D	57	LEU
1	D	120	ARG
1	D	135	LYS
1	D	167	GLU
1	D	169	VAL

Continued on next page...

Continued from previous page...

Mol	Chain	Res	Type
1	D	297	ASP
1	D	298	SER

Sometimes sidechains can be flipped to improve hydrogen bonding and reduce clashes. All (4) such sidechains are listed below:

Mol	Chain	Res	Type
1	A	148	GLN
1	A	191	GLN
1	B	105	HIS
1	B	300	ASN

5.3.3 RNA [i](#)

There are no RNA molecules in this entry.

5.4 Non-standard residues in protein, DNA, RNA chains [i](#)

There are no non-standard protein/DNA/RNA residues in this entry.

5.5 Carbohydrates [i](#)

There are no monosaccharides in this entry.

5.6 Ligand geometry [i](#)

Of 16 ligands modelled in this entry, 8 are monoatomic - leaving 8 for Mogul analysis.

In the following table, the Counts columns list the number of bonds (or angles) for which Mogul statistics could be retrieved, the number of bonds (or angles) that are observed in the model and the number of bonds (or angles) that are defined in the Chemical Component Dictionary. The Link column lists molecule types, if any, to which the group is linked. The Z score for a bond length (or angle) is the number of standard deviations the observed value is removed from the expected value. A bond length (or angle) with $|Z| > 2$ is considered an outlier worth inspection. RMSZ is the root-mean-square of all Z scores of the bond lengths (or angles).

Mol	Type	Chain	Res	Link	Bond lengths			Bond angles		
					Counts	RMSZ	# Z > 2	Counts	RMSZ	# Z > 2
3	NAI	C	403	-	42,48,48	4.54	19 (45%)	47,73,73	1.71	4 (8%)
4	CXF	B	404	2	9,9,9	0.27	0	9,10,10	0.18	0

Mol	Type	Chain	Res	Link	Bond lengths			Bond angles		
					Counts	RMSZ	# Z > 2	Counts	RMSZ	# Z > 2
4	CXF	D	404	2	9,9,9	0.28	0	9,10,10	0.16	0
3	NAI	D	403	-	42,48,48	4.60	18 (42%)	47,73,73	1.65	4 (8%)
3	NAI	B	403	-	42,48,48	4.38	18 (42%)	47,73,73	1.55	5 (10%)
4	CXF	C	404	2	9,9,9	0.36	0	9,10,10	0.20	0
4	CXF	A	404	2	9,9,9	0.28	0	9,10,10	0.20	0
3	NAI	A	403	-	42,48,48	4.44	18 (42%)	47,73,73	1.96	6 (12%)

In the following table, the Chirals column lists the number of chiral outliers, the number of chiral centers analysed, the number of these observed in the model and the number defined in the Chemical Component Dictionary. Similar counts are reported in the Torsion and Rings columns. '-' means no outliers of that kind were identified.

Mol	Type	Chain	Res	Link	Chirals	Torsions	Rings
3	NAI	C	403	-	-	5/25/72/72	0/5/5/5
4	CXF	B	404	2	-	0/3/11/11	0/1/1/1
4	CXF	D	404	2	-	0/3/11/11	0/1/1/1
3	NAI	D	403	-	-	5/25/72/72	0/5/5/5
3	NAI	B	403	-	-	5/25/72/72	0/5/5/5
4	CXF	C	404	2	-	0/3/11/11	0/1/1/1
4	CXF	A	404	2	-	0/3/11/11	0/1/1/1
3	NAI	A	403	-	-	5/25/72/72	0/5/5/5

All (73) bond length outliers are listed below:

Mol	Chain	Res	Type	Atoms	Z	Observed(Å)	Ideal(Å)
3	D	403	NAI	C2B-C1B	-14.52	1.31	1.53
3	A	403	NAI	C2B-C1B	-14.48	1.31	1.53
3	C	403	NAI	C2B-C1B	-14.28	1.32	1.53
3	D	403	NAI	O4B-C1B	14.05	1.60	1.41
3	B	403	NAI	C2B-C1B	-13.88	1.32	1.53
3	C	403	NAI	O4B-C1B	13.83	1.60	1.41
3	B	403	NAI	O4B-C1B	13.38	1.59	1.41
3	A	403	NAI	O4B-C1B	13.33	1.59	1.41
3	D	403	NAI	C6N-C5N	11.03	1.53	1.33
3	C	403	NAI	C6N-C5N	10.83	1.52	1.33
3	A	403	NAI	C6N-C5N	10.69	1.52	1.33
3	B	403	NAI	C6N-C5N	10.24	1.51	1.33
3	C	403	NAI	O4D-C1D	8.47	1.62	1.42
3	D	403	NAI	O4D-C1D	8.31	1.61	1.42
3	A	403	NAI	O4D-C1D	8.24	1.61	1.42
3	B	403	NAI	O4D-C1D	7.70	1.60	1.42

Continued on next page...

Continued from previous page...

Mol	Chain	Res	Type	Atoms	Z	Observed(Å)	Ideal(Å)
3	D	403	NAI	C2D-C1D	-7.32	1.30	1.53
3	B	403	NAI	C2D-C1D	-6.96	1.31	1.53
3	A	403	NAI	C2D-C1D	-6.87	1.31	1.53
3	C	403	NAI	C2D-C1D	-6.65	1.32	1.53
3	C	403	NAI	C2N-C3N	6.57	1.53	1.34
3	C	403	NAI	O4B-C4B	-6.51	1.30	1.45
3	D	403	NAI	C2N-C3N	6.40	1.52	1.34
3	D	403	NAI	O4D-C4D	-6.37	1.30	1.45
3	B	403	NAI	C2N-C3N	6.28	1.52	1.34
3	D	403	NAI	O4B-C4B	-6.10	1.31	1.45
3	C	403	NAI	O4D-C4D	-5.96	1.31	1.45
3	B	403	NAI	O4B-C4B	-5.90	1.31	1.45
3	B	403	NAI	O4D-C4D	-5.89	1.31	1.45
3	A	403	NAI	O4B-C4B	-5.79	1.32	1.45
3	A	403	NAI	O4D-C4D	-5.77	1.32	1.45
3	A	403	NAI	C2N-C3N	5.70	1.50	1.34
3	B	403	NAI	C7N-N7N	4.90	1.46	1.33
3	D	403	NAI	C7N-N7N	4.90	1.46	1.33
3	C	403	NAI	C7N-N7N	4.53	1.45	1.33
3	A	403	NAI	C7N-N7N	4.17	1.44	1.33
3	C	403	NAI	O2B-C2B	3.27	1.50	1.43
3	D	403	NAI	C6A-N6A	3.25	1.45	1.34
3	C	403	NAI	C6A-N6A	3.22	1.45	1.34
3	A	403	NAI	C6A-N6A	3.18	1.45	1.34
3	D	403	NAI	C6N-N1N	3.10	1.45	1.37
3	A	403	NAI	O2B-C2B	3.07	1.50	1.43
3	D	403	NAI	O2B-C2B	3.03	1.50	1.43
3	B	403	NAI	C6A-N6A	2.99	1.44	1.34
3	B	403	NAI	O2B-C2B	2.90	1.49	1.43
3	C	403	NAI	O2D-C2D	2.90	1.49	1.43
3	D	403	NAI	O3D-C3D	-2.89	1.36	1.43
3	A	403	NAI	C2A-N3A	2.84	1.36	1.32
3	C	403	NAI	C6N-N1N	2.83	1.44	1.37
3	D	403	NAI	O3B-C3B	-2.81	1.36	1.43
3	B	403	NAI	C6N-N1N	2.79	1.44	1.37
3	A	403	NAI	C5A-C4A	-2.78	1.33	1.40
3	A	403	NAI	O2D-C2D	2.78	1.49	1.43
3	A	403	NAI	C6N-N1N	2.77	1.44	1.37
3	B	403	NAI	C5A-C4A	-2.74	1.33	1.40
3	A	403	NAI	O3B-C3B	-2.67	1.36	1.43
3	B	403	NAI	O3B-C3B	-2.67	1.36	1.43
3	D	403	NAI	C5A-C4A	-2.54	1.34	1.40

Continued on next page...

Continued from previous page...

Mol	Chain	Res	Type	Atoms	Z	Observed(Å)	Ideal(Å)
3	A	403	NAI	O3D-C3D	-2.53	1.37	1.43
3	B	403	NAI	O3D-C3D	-2.51	1.37	1.43
3	C	403	NAI	C5A-C4A	-2.45	1.34	1.40
3	C	403	NAI	O3B-C3B	-2.45	1.37	1.43
3	C	403	NAI	C2A-N3A	2.41	1.36	1.32
3	D	403	NAI	O2D-C2D	2.27	1.48	1.43
3	B	403	NAI	C2A-N3A	2.26	1.35	1.32
3	B	403	NAI	O2D-C2D	2.23	1.48	1.43
3	A	403	NAI	O7N-C7N	-2.19	1.19	1.24
3	C	403	NAI	C7N-C3N	2.16	1.53	1.48
3	C	403	NAI	O3D-C3D	-2.07	1.38	1.43
3	D	403	NAI	C7N-C3N	2.05	1.53	1.48
3	B	403	NAI	O7N-C7N	-2.04	1.19	1.24
3	C	403	NAI	O7N-C7N	-2.00	1.19	1.24
3	D	403	NAI	O7N-C7N	-2.00	1.19	1.24

All (19) bond angle outliers are listed below:

Mol	Chain	Res	Type	Atoms	Z	Observed(°)	Ideal(°)
3	A	403	NAI	C5A-C6A-N6A	7.50	131.75	120.35
3	C	403	NAI	N3A-C2A-N1A	-6.73	118.15	128.68
3	A	403	NAI	N3A-C2A-N1A	-6.64	118.31	128.68
3	D	403	NAI	C5A-C6A-N6A	6.49	130.21	120.35
3	C	403	NAI	C5A-C6A-N6A	6.27	129.88	120.35
3	B	403	NAI	C5A-C6A-N6A	5.49	128.70	120.35
3	D	403	NAI	N3A-C2A-N1A	-5.45	120.16	128.68
3	B	403	NAI	N3A-C2A-N1A	-5.42	120.20	128.68
3	A	403	NAI	N6A-C6A-N1A	-5.19	107.80	118.57
3	D	403	NAI	N6A-C6A-N1A	-4.20	109.86	118.57
3	C	403	NAI	N6A-C6A-N1A	-4.12	110.02	118.57
3	B	403	NAI	N6A-C6A-N1A	-3.64	111.02	118.57
3	A	403	NAI	PN-O3-PA	-3.27	121.61	132.83
3	A	403	NAI	O4B-C1B-C2B	-2.70	102.98	106.93
3	D	403	NAI	PN-O3-PA	-2.61	123.88	132.83
3	B	403	NAI	O4D-C1D-C2D	-2.42	101.37	106.64
3	A	403	NAI	C4A-C5A-N7A	-2.11	107.20	109.40
3	C	403	NAI	O5D-C5D-C4D	2.10	116.21	108.99
3	B	403	NAI	O2D-C2D-C3D	-2.08	105.10	111.82

There are no chirality outliers.

All (20) torsion outliers are listed below:

Mol	Chain	Res	Type	Atoms
3	A	403	NAI	C2D-C1D-N1N-C2N
3	A	403	NAI	C2D-C1D-N1N-C6N
3	B	403	NAI	C2D-C1D-N1N-C2N
3	D	403	NAI	C2D-C1D-N1N-C2N
3	A	403	NAI	O4D-C1D-N1N-C2N
3	C	403	NAI	C2D-C1D-N1N-C2N
3	D	403	NAI	C2D-C1D-N1N-C6N
3	B	403	NAI	C2D-C1D-N1N-C6N
3	C	403	NAI	O4D-C1D-N1N-C2N
3	D	403	NAI	O4D-C1D-N1N-C2N
3	B	403	NAI	O4D-C1D-N1N-C2N
3	C	403	NAI	C2D-C1D-N1N-C6N
3	A	403	NAI	O4D-C1D-N1N-C6N
3	C	403	NAI	O4D-C1D-N1N-C6N
3	D	403	NAI	O4D-C1D-N1N-C6N
3	B	403	NAI	O4D-C1D-N1N-C6N
3	C	403	NAI	O4B-C4B-C5B-O5B
3	A	403	NAI	O4B-C4B-C5B-O5B
3	B	403	NAI	O4B-C4B-C5B-O5B
3	D	403	NAI	O4B-C4B-C5B-O5B

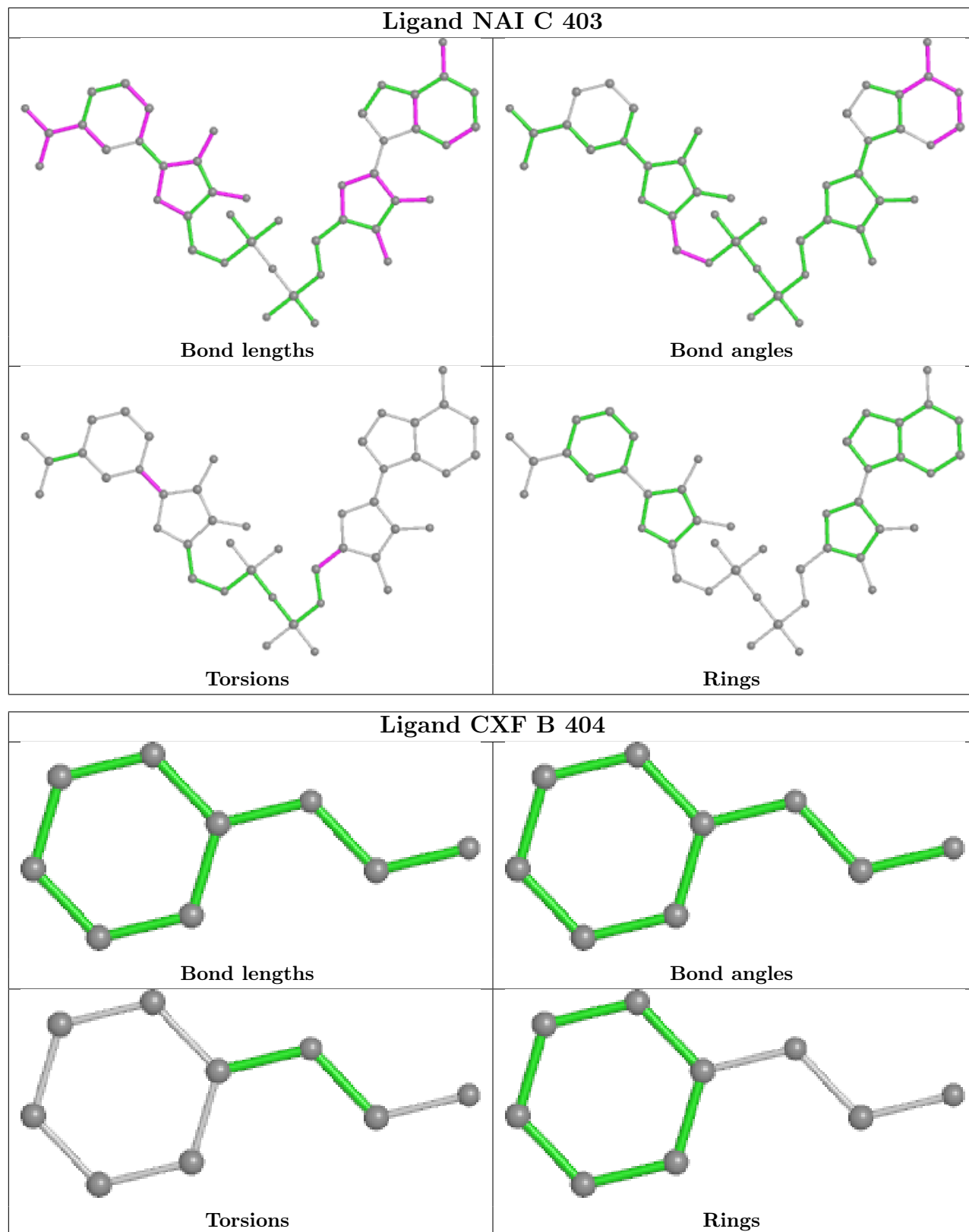
There are no ring outliers.

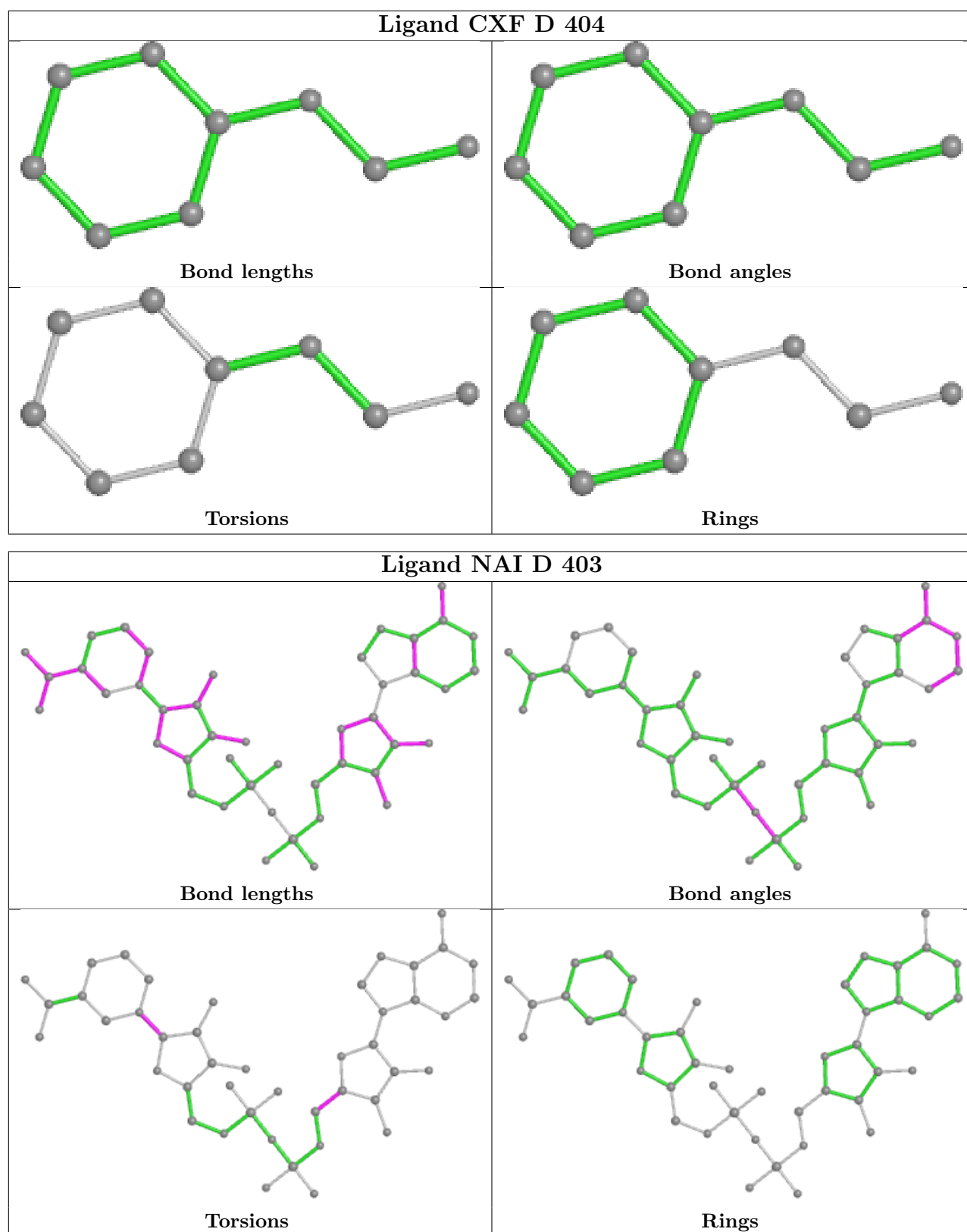
6 monomers are involved in 19 short contacts:

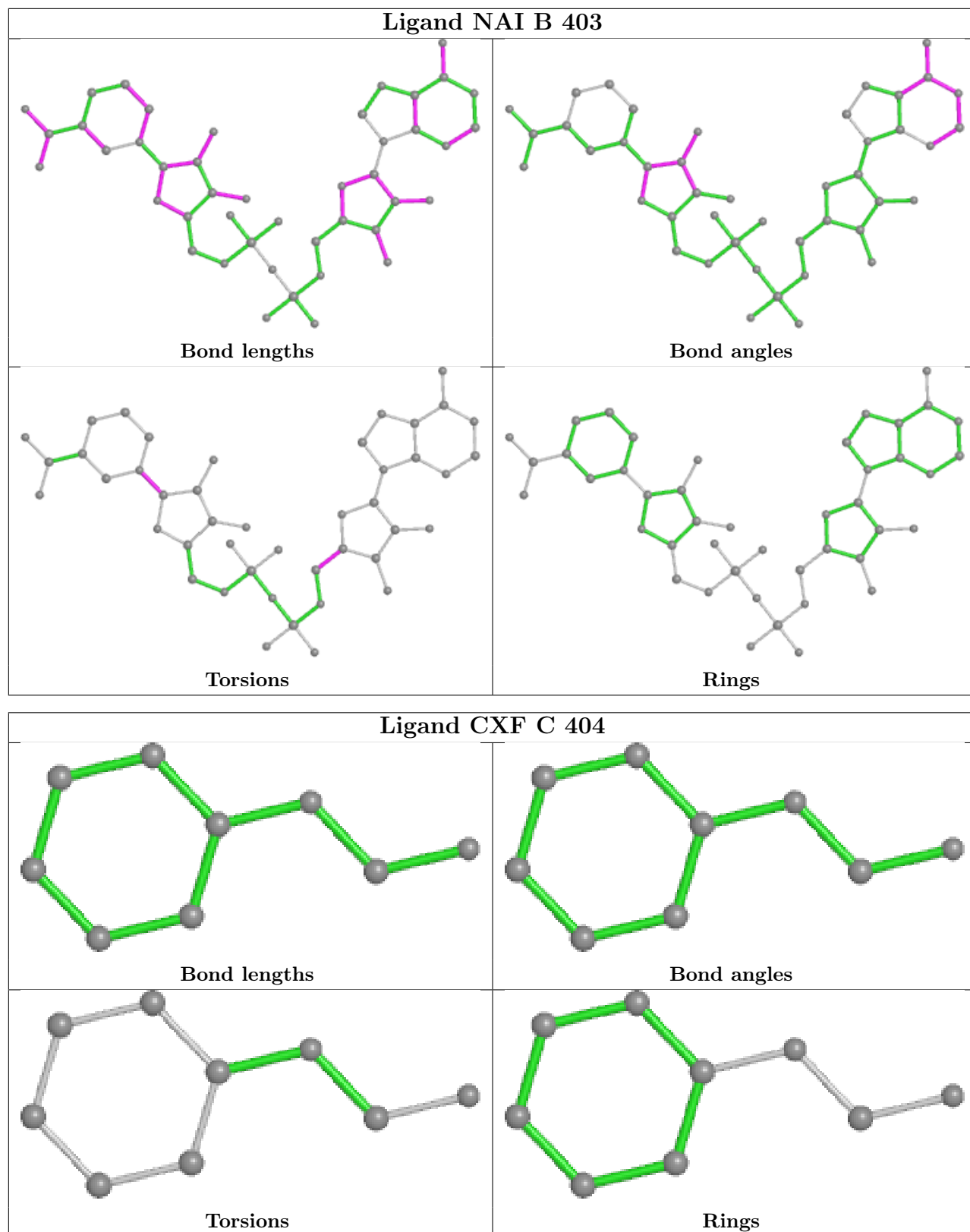
Mol	Chain	Res	Type	Clashes	Symm-Clashes
3	C	403	NAI	3	0
4	B	404	CXF	3	0
3	D	403	NAI	3	0
3	B	403	NAI	6	0
4	C	404	CXF	1	0
3	A	403	NAI	3	0

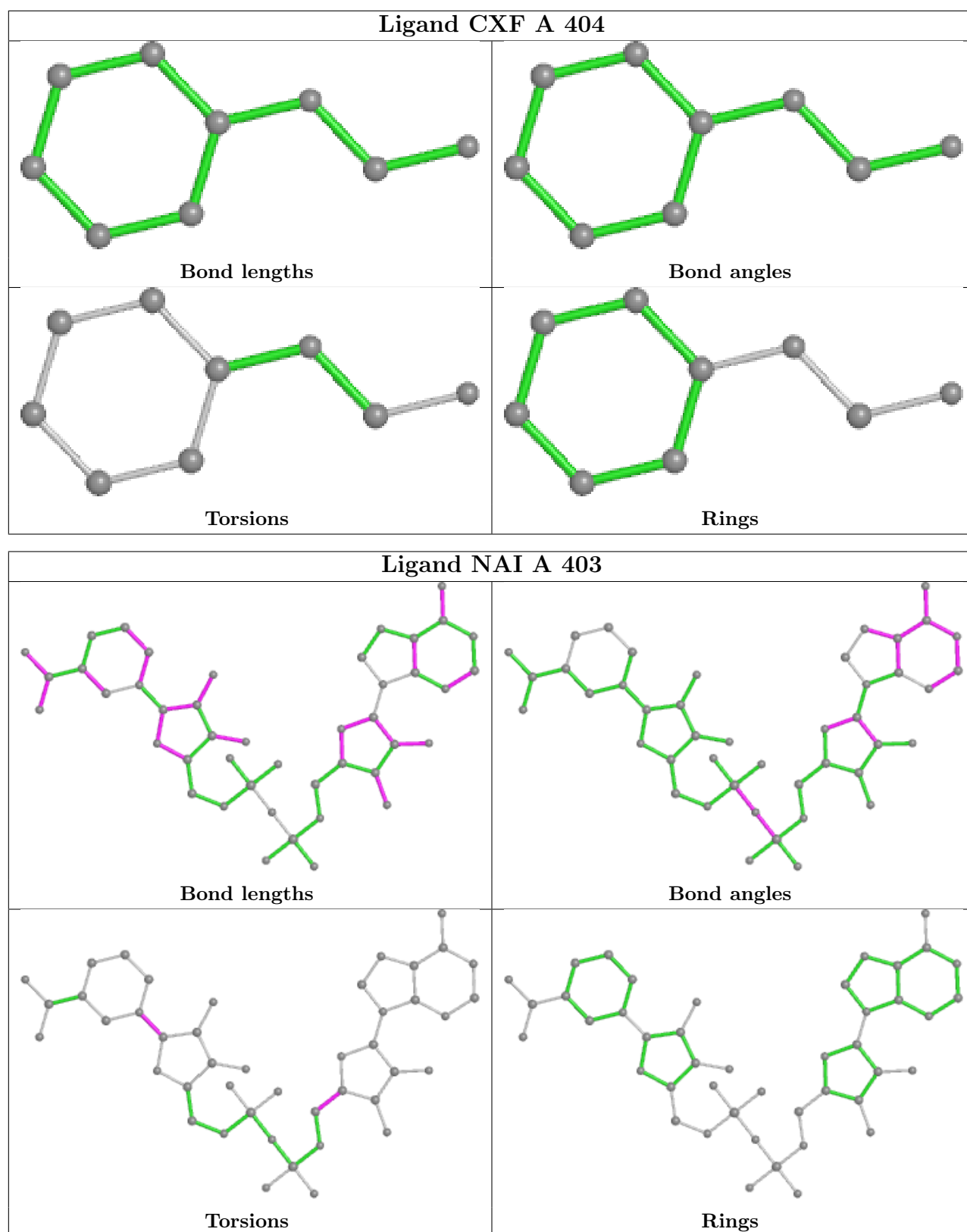
The following is a two-dimensional graphical depiction of Mogul quality analysis of bond lengths, bond angles, torsion angles, and ring geometry for all instances of the Ligand of Interest. In addition, ligands with molecular weight > 250 and outliers as shown on the validation Tables will also be included. For torsion angles, if less than 5% of the Mogul distribution of torsion angles is within 10 degrees of the torsion angle in question, then that torsion angle is considered an outlier. Any bond that is central to one or more torsion angles identified as an outlier by Mogul will be highlighted in the graph. For rings, the root-mean-square deviation (RMSD) between the ring in question and similar rings identified by Mogul is calculated over all ring torsion angles. If the average RMSD is greater than 60 degrees and the minimal RMSD between the ring in question and any Mogul-identified rings is also greater than 60 degrees, then that ring is considered an outlier. The outliers are highlighted in purple. The color gray indicates Mogul did not find sufficient

equivalents in the CSD to analyse the geometry.









5.7 Other polymers [\(i\)](#)

There are no such residues in this entry.

5.8 Polymer linkage issues

There are no chain breaks in this entry.

6 Fit of model and data [i](#)

6.1 Protein, DNA and RNA chains [i](#)

In the following table, the column labelled ‘#RSRZ > 2’ contains the number (and percentage) of RSRZ outliers, followed by percent RSRZ outliers for the chain as percentile scores relative to all X-ray entries and entries of similar resolution. The OWAB column contains the minimum, median, 95th percentile and maximum values of the occupancy-weighted average B-factor per residue. The column labelled ‘Q < 0.9’ lists the number of (and percentage) of residues with an average occupancy less than 0.9.

Mol	Chain	Analysed	<RSRZ>	#RSRZ>2	OWAB(Å ²)	Q<0.9
1	A	374/377 (99%)	-0.51	1 (0%) 94 93	30, 44, 61, 76	0
1	B	374/377 (99%)	-0.52	1 (0%) 94 93	29, 46, 63, 76	0
1	C	374/377 (99%)	-0.29	5 (1%) 77 75	29, 51, 79, 92	0
1	D	374/377 (99%)	0.25	41 (10%) 5 4	31, 55, 96, 115	0
All	All	1496/1508 (99%)	-0.27	48 (3%) 47 45	29, 48, 79, 115	0

All (48) RSRZ outliers are listed below:

Mol	Chain	Res	Type	RSRZ
1	D	358	GLY	7.9
1	D	368	ILE	4.9
1	D	348	HIS	4.8
1	D	20	PRO	4.7
1	D	50	ASP	4.7
1	C	17	GLU	4.4
1	D	19	LYS	4.4
1	D	362	LEU	4.3
1	D	54	SER	4.3
1	D	357	GLU	3.8
1	D	361	LEU	3.7
1	D	18	LYS	3.6
1	D	336	MET	3.3
1	D	354	LYS	3.3
1	C	10	LYS	3.3
1	D	366	GLU	3.2
1	D	349	VAL	3.1
1	D	167	GLU	3.1
1	D	51	HIS	3.0
1	D	16	GLU	3.0
1	D	170	CYS	2.9

Continued on next page...

Continued from previous page...

Mol	Chain	Res	Type	RSRZ
1	D	57	LEU	2.9
1	C	21	PHE	2.9
1	D	84	ARG	2.8
1	D	345	LEU	2.8
1	D	355	ILE	2.8
1	D	45	ILE	2.7
1	D	56	THR	2.7
1	D	350	LEU	2.7
1	D	53	VAL	2.5
1	D	3	ALA	2.5
1	D	367	SER	2.4
1	D	370	THR	2.4
1	C	353	GLU	2.3
1	D	4	GLY	2.3
1	A	247	LYS	2.3
1	D	346	ILE	2.2
1	D	331	LEU	2.2
1	D	161	ASP	2.2
1	D	162	ALA	2.2
1	D	297	ASP	2.2
1	B	1	SER	2.2
1	D	347	THR	2.1
1	D	359	PHE	2.1
1	C	360	ASP	2.0
1	D	52	VAL	2.0
1	D	334	ASP	2.0
1	D	342	LEU	2.0

6.2 Non-standard residues in protein, DNA, RNA chains [i](#)

There are no non-standard protein/DNA/RNA residues in this entry.

6.3 Carbohydrates [i](#)

There are no monosaccharides in this entry.

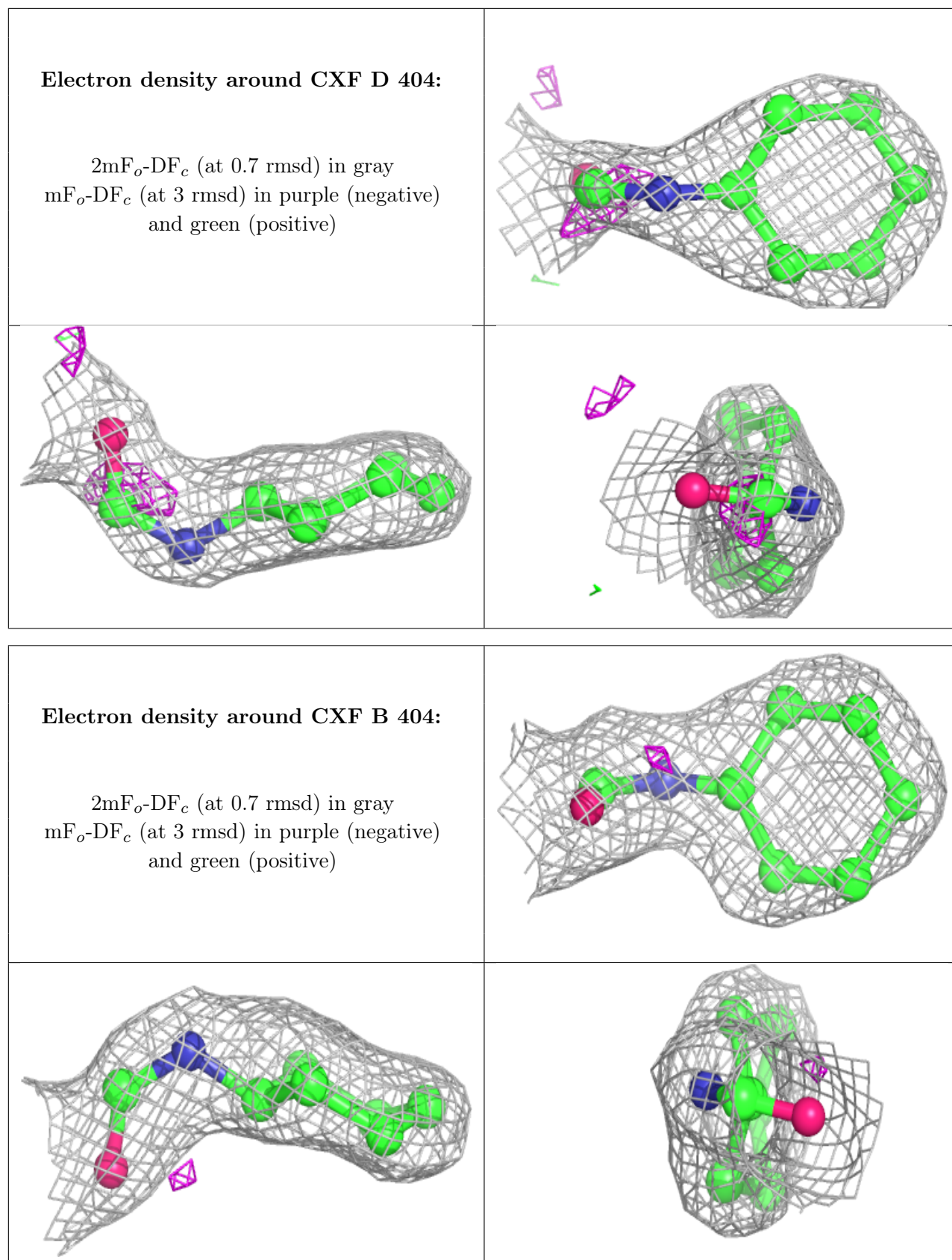
6.4 Ligands [i](#)

In the following table, the Atoms column lists the number of modelled atoms in the group and the number defined in the chemical component dictionary. The B-factors column lists the minimum,

median, 95th percentile and maximum values of B factors of atoms in the group. The column labelled 'Q< 0.9' lists the number of atoms with occupancy less than 0.9.

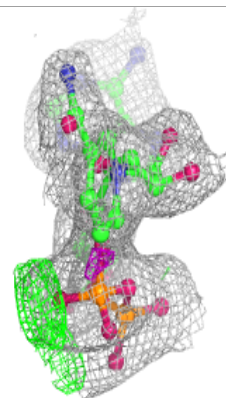
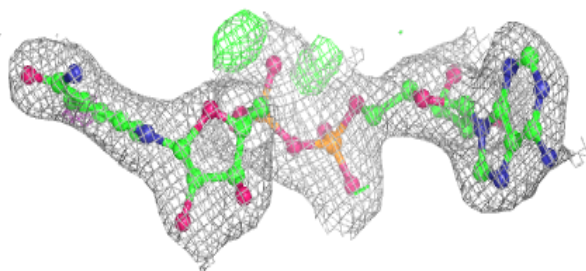
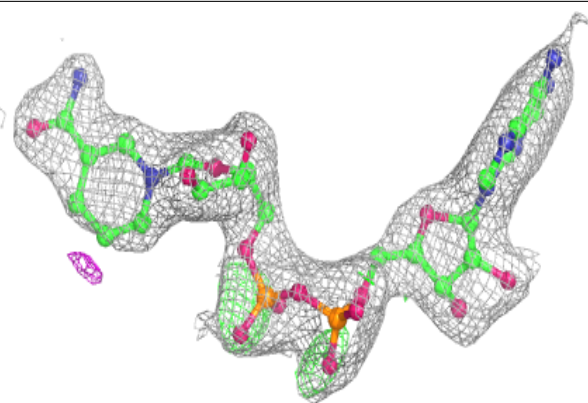
Mol	Type	Chain	Res	Atoms	RSCC	RSR	B-factors(Å ²)	Q<0.9
4	CXF	D	404	9/9	0.89	0.23	49,55,59,62	0
4	CXF	B	404	9/9	0.94	0.17	40,44,46,48	0
3	NAI	D	403	44/44	0.95	0.10	42,53,62,71	0
4	CXF	C	404	9/9	0.96	0.15	48,50,51,52	0
3	NAI	C	403	44/44	0.97	0.09	34,42,48,50	0
2	ZN	D	401	1/1	0.98	0.05	65,65,65,65	0
4	CXF	A	404	9/9	0.98	0.14	36,40,44,47	0
3	NAI	A	403	44/44	0.98	0.08	30,36,39,42	0
3	NAI	B	403	44/44	0.98	0.09	31,39,43,45	0
2	ZN	C	402	1/1	0.98	0.09	46,46,46,46	0
2	ZN	A	401	1/1	0.99	0.07	41,41,41,41	0
2	ZN	A	402	1/1	0.99	0.14	36,36,36,36	0
2	ZN	B	401	1/1	0.99	0.06	44,44,44,44	0
2	ZN	B	402	1/1	0.99	0.12	43,43,43,43	0
2	ZN	C	401	1/1	0.99	0.05	52,52,52,52	0
2	ZN	D	402	1/1	1.00	0.12	43,43,43,43	0

The following is a graphical depiction of the model fit to experimental electron density of all instances of the Ligand of Interest. In addition, ligands with molecular weight > 250 and outliers as shown on the geometry validation Tables will also be included. Each fit is shown from different orientation to approximate a three-dimensional view.

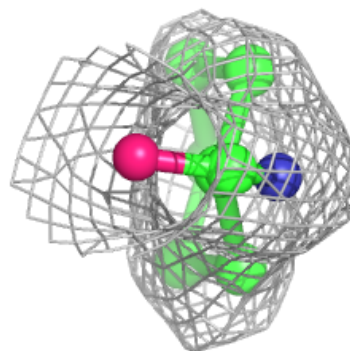
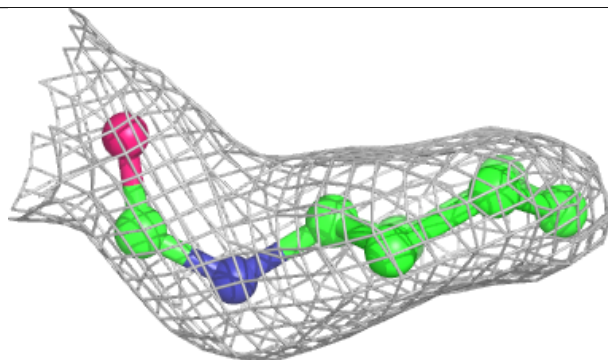
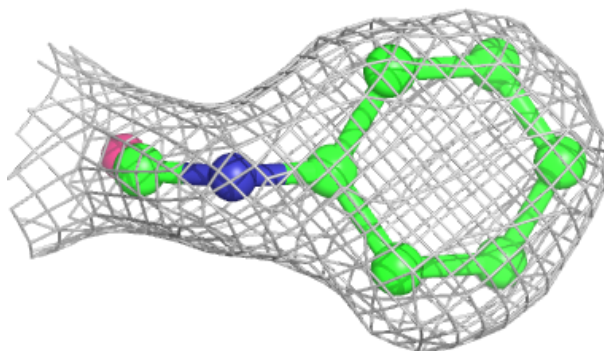


Electron density around NAI D 403:

$2mF_o-DF_c$ (at 0.7 rmsd) in gray
 mF_o-DF_c (at 3 rmsd) in purple (negative)
and green (positive)

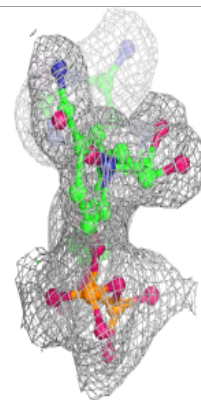
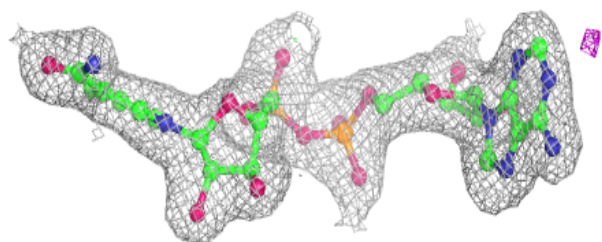
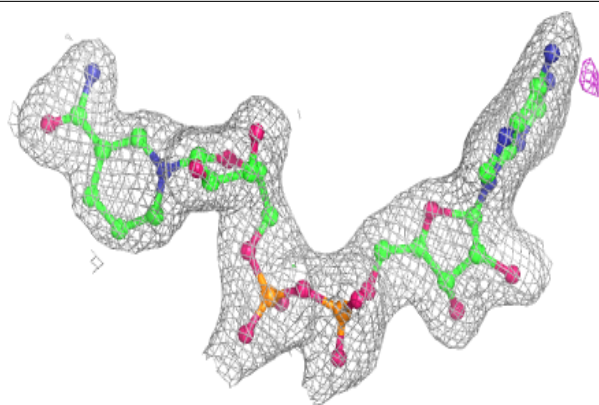
**Electron density around CXF C 404:**

$2mF_o-DF_c$ (at 0.7 rmsd) in gray
 mF_o-DF_c (at 3 rmsd) in purple (negative)
and green (positive)

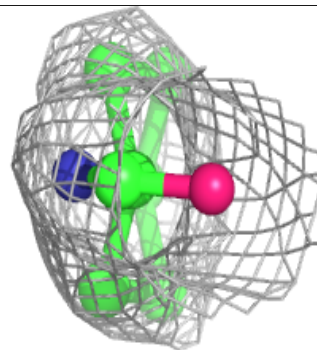
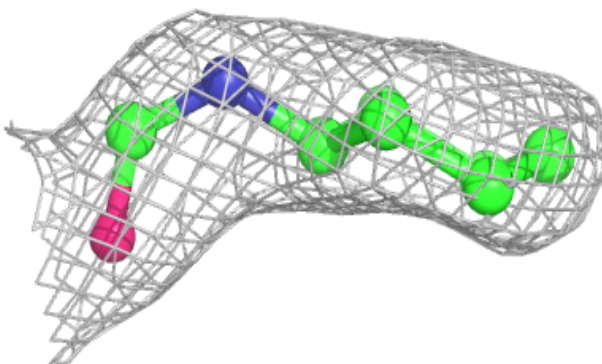
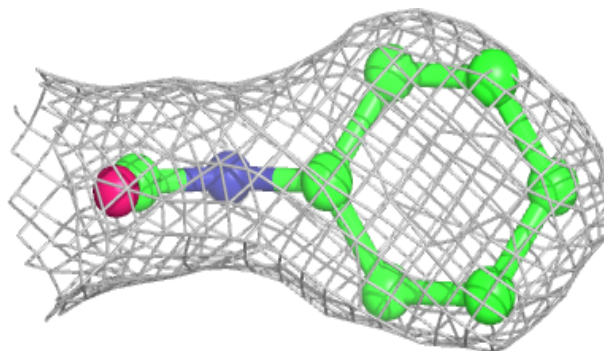


Electron density around NAI C 403:

$2mF_o-DF_c$ (at 0.7 rmsd) in gray
 mF_o-DF_c (at 3 rmsd) in purple (negative)
and green (positive)

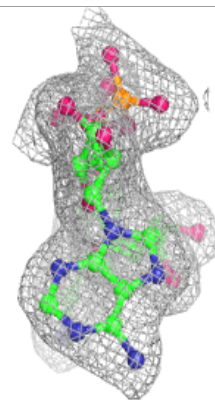
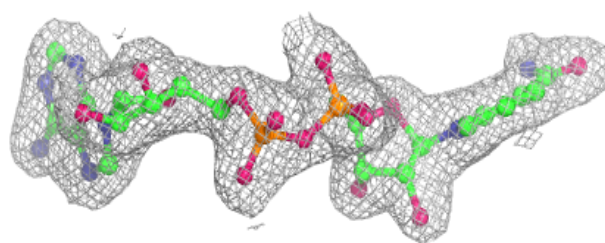
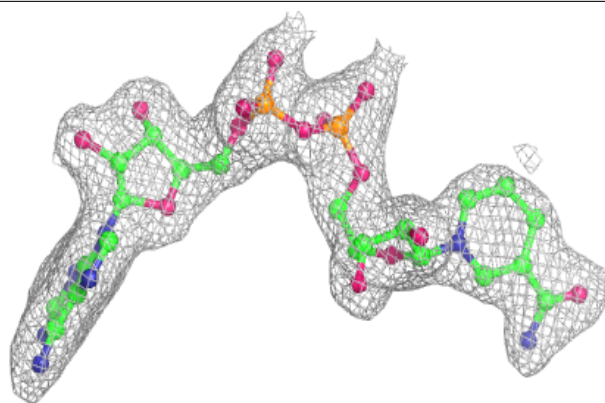
**Electron density around CXF A 404:**

$2mF_o-DF_c$ (at 0.7 rmsd) in gray
 mF_o-DF_c (at 3 rmsd) in purple (negative)
and green (positive)

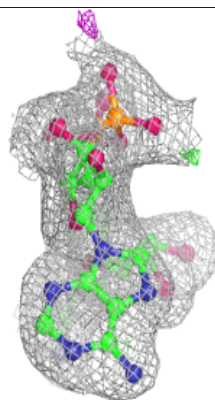
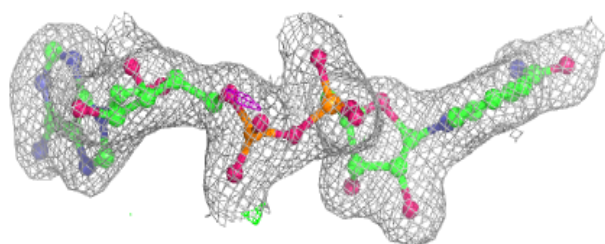
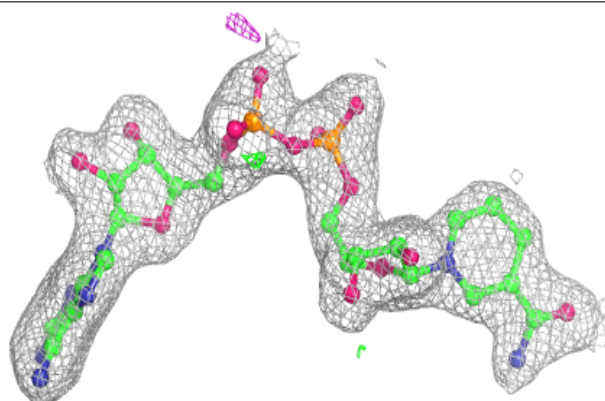


Electron density around NAI A 403:

$2mF_o-DF_c$ (at 0.7 rmsd) in gray
 mF_o-DF_c (at 3 rmsd) in purple (negative)
and green (positive)

**Electron density around NAI B 403:**

$2mF_o-DF_c$ (at 0.7 rmsd) in gray
 mF_o-DF_c (at 3 rmsd) in purple (negative)
and green (positive)



6.5 Other polymers [i](#)

There are no such residues in this entry.