



Full wwPDB X-ray Structure Validation Report ⓘ

Aug 15, 2023 – 06:20 PM EDT

PDB ID : 1TW1
Title : beta-1,4-galactosyltransferase mutant Met344His (m344H-Gal-T1) complex with UDP-galactose and magnesium
Authors : Ramakrishnan, B.; Boeggeman, E.; Qasba, P.K.
Deposited on : 2004-06-30
Resolution : 2.30 Å(reported)

This is a Full wwPDB X-ray Structure Validation Report for a publicly released PDB entry.

We welcome your comments at validation@mail.wwpdb.org

A user guide is available at

<https://www.wwpdb.org/validation/2017/XrayValidationReportHelp>

with specific help available everywhere you see the ⓘ symbol.

The types of validation reports are described at

<http://www.wwpdb.org/validation/2017/FAQs#types>.

The following versions of software and data (see [references ⓘ](#)) were used in the production of this report:

MolProbity : 4.02b-467
Mogul : 1.8.5 (274361), CSD as541be (2020)
Xtriage (Phenix) : 1.13
EDS : 2.35
buster-report : 1.1.7 (2018)
Percentile statistics : 20191225.v01 (using entries in the PDB archive December 25th 2019)
Refmac : 5.8.0158
CCP4 : 7.0.044 (Gargrove)
Ideal geometry (proteins) : Engh & Huber (2001)
Ideal geometry (DNA, RNA) : Parkinson et al. (1996)
Validation Pipeline (wwPDB-VP) : 2.35

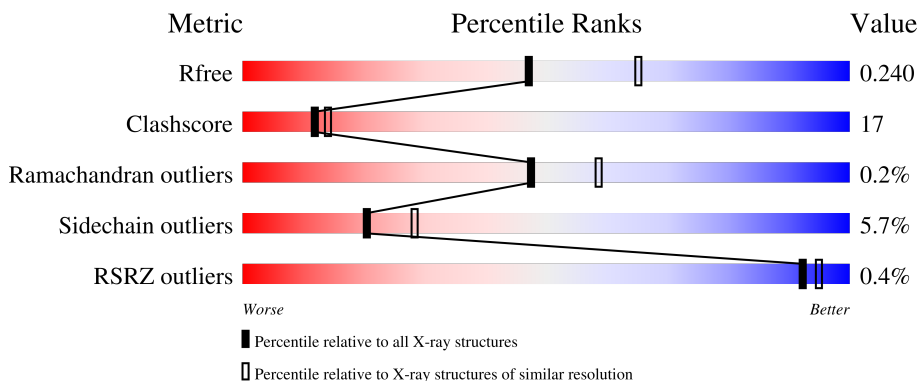
1 Overall quality at a glance

The following experimental techniques were used to determine the structure:

X-RAY DIFFRACTION

The reported resolution of this entry is 2.30 Å.

Percentile scores (ranging between 0-100) for global validation metrics of the entry are shown in the following graphic. The table shows the number of entries on which the scores are based.



Metric	Whole archive (#Entries)	Similar resolution (#Entries, resolution range(Å))
R_{free}	130704	5042 (2.30-2.30)
Clashscore	141614	5643 (2.30-2.30)
Ramachandran outliers	138981	5575 (2.30-2.30)
Sidechain outliers	138945	5575 (2.30-2.30)
RSRZ outliers	127900	4938 (2.30-2.30)

The table below summarises the geometric issues observed across the polymeric chains and their fit to the electron density. The red, orange, yellow and green segments of the lower bar indicate the fraction of residues that contain outliers for ≥ 3 , 2, 1 and 0 types of geometric quality criteria respectively. A grey segment represents the fraction of residues that are not modelled. The numeric value for each fraction is indicated below the corresponding segment, with a dot representing fractions $\leq 5\%$. The upper red bar (where present) indicates the fraction of residues that have poor fit to the electron density. The numeric value is given above the bar.

Mol	Chain	Length	Quality of chain
1	A	286	
1	B	286	

The following table lists non-polymeric compounds, carbohydrate monomers and non-standard residues in protein, DNA, RNA chains that are outliers for geometric or electron-density-fit criteria:

Mol	Type	Chain	Res	Chirality	Geometry	Clashes	Electron density
2	GDU	A	2	X	-	-	-
2	GDU	B	404	X	-	-	-

2 Entry composition i

There are 7 unique types of molecules in this entry. The entry contains 5087 atoms, of which 0 are hydrogens and 0 are deuteriums.

In the tables below, the ZeroOcc column contains the number of atoms modelled with zero occupancy, the AltConf column contains the number of residues with at least one atom in alternate conformation and the Trace column contains the number of residues modelled with at most 2 atoms.

- Molecule 1 is a protein called Beta-1,4-galactosyltransferase 1.

Mol	Chain	Residues	Atoms					ZeroOcc	AltConf	Trace
			Total	C	N	O	S			
1	A	272	2221	1426	384	399	12	0	0	0
1	B	272	2221	1426	384	399	12	0	0	0

There are 30 discrepancies between the modelled and reference sequences:

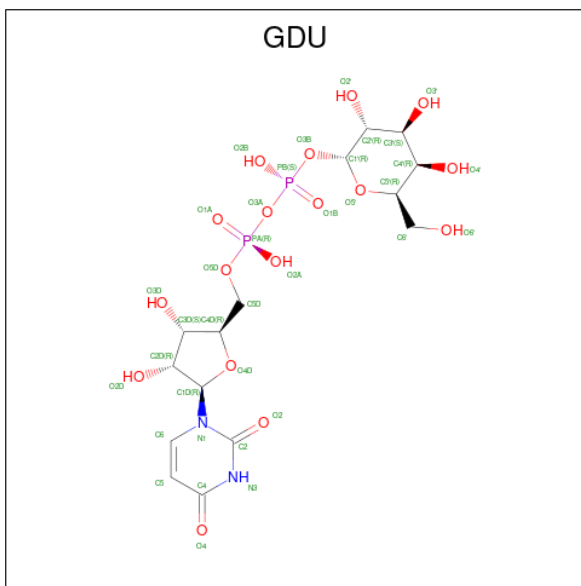
Chain	Residue	Modelled	Actual	Comment	Reference
A	117	ALA	-	SEE REMARK 999	UNP P08037
A	118	SER	-	SEE REMARK 999	UNP P08037
A	119	MET	-	SEE REMARK 999	UNP P08037
A	120	THR	-	SEE REMARK 999	UNP P08037
A	121	GLY	-	SEE REMARK 999	UNP P08037
A	122	GLY	-	SEE REMARK 999	UNP P08037
A	123	GLN	-	SEE REMARK 999	UNP P08037
A	124	GLN	-	SEE REMARK 999	UNP P08037
A	125	MET	-	SEE REMARK 999	UNP P08037
A	126	GLY	-	SEE REMARK 999	UNP P08037
A	127	ARG	-	SEE REMARK 999	UNP P08037
A	128	GLY	-	SEE REMARK 999	UNP P08037
A	129	SER	-	SEE REMARK 999	UNP P08037
A	342	THR	CYS	engineered mutation	UNP P08037
A	344	HIS	MET	engineered mutation	UNP P08037
B	117	ALA	-	SEE REMARK 999	UNP P08037
B	118	SER	-	SEE REMARK 999	UNP P08037
B	119	MET	-	SEE REMARK 999	UNP P08037
B	120	THR	-	SEE REMARK 999	UNP P08037
B	121	GLY	-	SEE REMARK 999	UNP P08037
B	122	GLY	-	SEE REMARK 999	UNP P08037
B	123	GLN	-	SEE REMARK 999	UNP P08037
B	124	GLN	-	SEE REMARK 999	UNP P08037
B	125	MET	-	SEE REMARK 999	UNP P08037
B	126	GLY	-	SEE REMARK 999	UNP P08037

Continued on next page...

Continued from previous page...

Chain	Residue	Modelled	Actual	Comment	Reference
B	127	ARG	-	SEE REMARK 999	UNP P08037
B	128	GLY	-	SEE REMARK 999	UNP P08037
B	129	SER	-	SEE REMARK 999	UNP P08037
B	342	THR	CYS	engineered mutation	UNP P08037
B	344	HIS	MET	engineered mutation	UNP P08037

- Molecule 2 is GALACTOSE-URIDINE-5'-DIPHOSPHATE (three-letter code: GDU) (formula: $C_{15}H_{24}N_2O_{17}P_2$).



Mol	Chain	Residues	Atoms				ZeroOcc	AltConf	
			Total	C	N	O			P
2	A	1	Total	C	N	O	P	0	0
			36	15	2	17	2		
2	B	1	Total	C	N	O	P	0	0
			36	15	2	17	2		

- Molecule 3 is MAGNESIUM ION (three-letter code: MG) (formula: Mg).

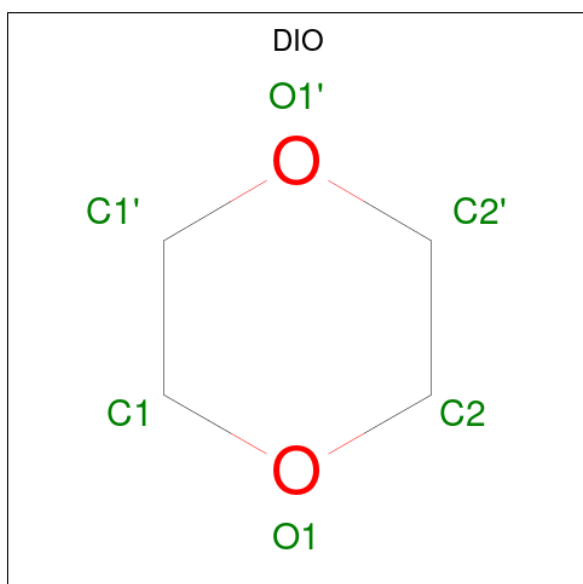
Mol	Chain	Residues	Atoms		ZeroOcc	AltConf
			Total	Mg		
3	A	1	Total	Mg	0	0
			1	1		
3	B	1	Total	Mg	0	0
			1	1		

- Molecule 4 is SULFATE ION (three-letter code: SO4) (formula: O_4S).



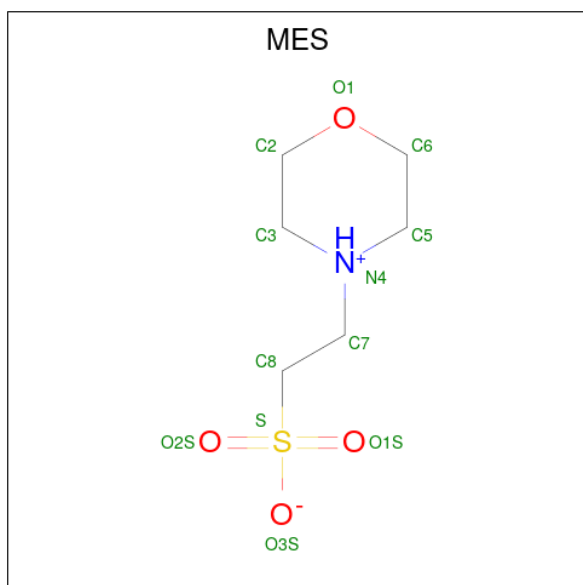
Mol	Chain	Residues	Atoms	ZeroOcc	AltConf
4	A	1	Total O S 5 4 1	0	0
4	A	1	Total O S 5 4 1	0	0
4	B	1	Total O S 5 4 1	0	0
4	B	1	Total O S 5 4 1	0	0
4	B	1	Total O S 5 4 1	0	0

- Molecule 5 is 1,4-DIETHYLENE DIOXIDE (three-letter code: DIO) (formula: C₄H₈O₂).



Mol	Chain	Residues	Atoms			ZeroOcc	AltConf
5	A	1	Total	C	O	0	0
			6	4	2		
5	A	1	Total	C	O	0	0
			6	4	2		

- Molecule 6 is 2-(N-MORPHOLINO)-ETHANESULFONIC ACID (three-letter code: MES) (formula: C₆H₁₃NO₄S).



Mol	Chain	Residues	Atoms					ZeroOcc	AltConf
6	B	1	Total	C	N	O	S	0	0
			12	6	1	4	1		

- Molecule 7 is water.

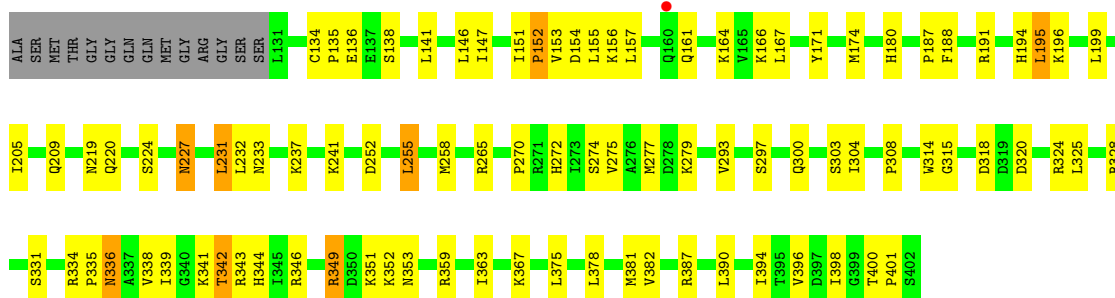
Mol	Chain	Residues	Atoms		ZeroOcc	AltConf
7	A	262	Total	O	0	0
			262	262		
7	B	260	Total	O	0	0
			260	260		

3 Residue-property plots [i](#)

These plots are drawn for all protein, RNA, DNA and oligosaccharide chains in the entry. The first graphic for a chain summarises the proportions of the various outlier classes displayed in the second graphic. The second graphic shows the sequence view annotated by issues in geometry and electron density. Residues are color-coded according to the number of geometric quality criteria for which they contain at least one outlier: green = 0, yellow = 1, orange = 2 and red = 3 or more. A red dot above a residue indicates a poor fit to the electron density ($RSRZ > 2$). Stretches of 2 or more consecutive residues without any outlier are shown as a green connector. Residues present in the sample, but not in the model, are shown in grey.

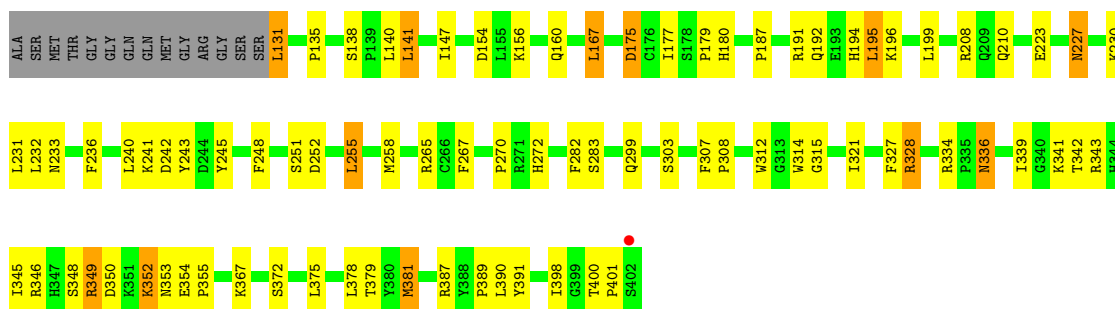
- Molecule 1: Beta-1,4-galactosyltransferase 1

Chain A: 



- Molecule 1: Beta-1,4-galactosyltransferase 1

Chain B: 



4 Data and refinement statistics

Property	Value	Source
Space group	P 21 21 21	Depositor
Cell constants a, b, c, α , β , γ	50.01Å 91.52Å 142.75Å 90.00° 90.00° 90.00°	Depositor
Resolution (Å)	37.38 – 2.30 42.22 – 2.30	Depositor EDS
% Data completeness (in resolution range)	98.7 (37.38-2.30) 98.6 (42.22-2.30)	Depositor EDS
R_{merge}	(Not available)	Depositor
R_{sym}	0.07	Depositor
$\langle I/\sigma(I) \rangle$ ¹	1.53 (at 2.29Å)	Xtrriage
Refinement program	CNS 1.0	Depositor
R, R_{free}	0.196 , 0.261 0.180 , 0.240	Depositor DCC
R_{free} test set	1461 reflections (4.93%)	wwPDB-VP
Wilson B-factor (Å ²)	36.6	Xtrriage
Anisotropy	0.147	Xtrriage
Bulk solvent k_{sol} (e/Å ³), B_{sol} (Å ²)	0.33 , 53.8	EDS
L-test for twinning ²	$\langle L \rangle = 0.47$, $\langle L^2 \rangle = 0.30$	Xtrriage
Estimated twinning fraction	No twinning to report.	Xtrriage
F_o, F_c correlation	0.95	EDS
Total number of atoms	5087	wwPDB-VP
Average B, all atoms (Å ²)	35.0	wwPDB-VP

Xtrriage's analysis on translational NCS is as follows: *The largest off-origin peak in the Patterson function is 4.65% of the height of the origin peak. No significant pseudotranslation is detected.*

¹Intensities estimated from amplitudes.

²Theoretical values of $\langle |L| \rangle$, $\langle L^2 \rangle$ for acentric reflections are 0.5, 0.333 respectively for untwinned datasets, and 0.375, 0.2 for perfectly twinned datasets.

5 Model quality [i](#)

5.1 Standard geometry [i](#)

Bond lengths and bond angles in the following residue types are not validated in this section: SO4, MES, GDU, MG, DIO

The Z score for a bond length (or angle) is the number of standard deviations the observed value is removed from the expected value. A bond length (or angle) with $|Z| > 5$ is considered an outlier worth inspection. RMSZ is the root-mean-square of all Z scores of the bond lengths (or angles).

Mol	Chain	Bond lengths		Bond angles	
		RMSZ	# Z >5	RMSZ	# Z >5
1	A	0.47	0/2282	0.74	0/3092
1	B	0.51	0/2282	0.76	1/3092 (0.0%)
All	All	0.49	0/4564	0.75	1/6184 (0.0%)

There are no bond length outliers.

All (1) bond angle outliers are listed below:

Mol	Chain	Res	Type	Atoms	Z	Observed(°)	Ideal(°)
1	B	315	GLY	N-CA-C	5.52	126.90	113.10

There are no chirality outliers.

There are no planarity outliers.

5.2 Too-close contacts [i](#)

In the following table, the Non-H and H(model) columns list the number of non-hydrogen atoms and hydrogen atoms in the chain respectively. The H(added) column lists the number of hydrogen atoms added and optimized by MolProbity. The Clashes column lists the number of clashes within the asymmetric unit, whereas Symm-Clashes lists symmetry-related clashes.

Mol	Chain	Non-H	H(model)	H(added)	Clashes	Symm-Clashes
1	A	2221	0	2185	90	0
1	B	2221	0	2185	70	0
2	A	36	0	21	2	0
2	B	36	0	21	2	0
3	A	1	0	0	0	0
3	B	1	0	0	0	0
4	A	10	0	0	0	0
4	B	15	0	0	0	0

Continued on next page...

Continued from previous page...

Mol	Chain	Non-H	H(model)	H(added)	Clashes	Symm-Clashes
5	A	12	0	16	2	0
6	B	12	0	13	1	0
7	A	262	0	0	4	0
7	B	260	0	0	6	0
All	All	5087	0	4441	156	0

The all-atom clashscore is defined as the number of clashes found per 1000 atoms (including hydrogen atoms). The all-atom clashscore for this structure is 17.

All (156) close contacts within the same asymmetric unit are listed below, sorted by their clash magnitude.

Atom-1	Atom-2	Interatomic distance (Å)	Clash overlap (Å)
1:A:351:LYS:HD2	1:A:352:LYS:HG2	1.54	0.88
1:B:349:ARG:HD3	1:B:349:ARG:H	1.42	0.82
1:A:224:SER:HB2	7:A:916:HOH:O	1.78	0.82
1:B:258:MET:HE3	1:B:341:LYS:HB3	1.61	0.81
1:A:336:ASN:C	1:A:336:ASN:HD22	1.86	0.80
1:A:349:ARG:H	1:A:349:ARG:NE	1.80	0.78
1:B:349:ARG:HD3	1:B:349:ARG:N	1.98	0.78
1:A:231:LEU:HD13	1:A:398:ILE:HD13	1.69	0.74
1:A:336:ASN:ND2	1:A:338:VAL:H	1.85	0.73
1:B:348:SER:HB2	1:B:349:ARG:NH1	2.03	0.73
1:B:349:ARG:H	1:B:349:ARG:CD	2.00	0.72
1:A:258:MET:HE3	1:A:341:LYS:HB3	1.74	0.68
1:A:336:ASN:HD21	1:A:339:ILE:H	1.39	0.68
1:A:191:ARG:HH21	1:A:194:HIS:HD2	1.42	0.68
1:A:336:ASN:HD22	1:A:338:VAL:N	1.92	0.67
1:A:336:ASN:ND2	1:A:338:VAL:N	2.42	0.67
1:A:336:ASN:ND2	1:A:339:ILE:H	1.93	0.67
1:A:154:ASP:OD1	1:A:156:LYS:HB2	1.95	0.66
1:A:336:ASN:HD22	1:A:338:VAL:H	1.43	0.66
1:B:336:ASN:HD22	1:B:336:ASN:C	1.99	0.66
1:B:336:ASN:ND2	1:B:339:ILE:H	1.94	0.65
1:B:154:ASP:OD1	1:B:156:LYS:HE2	1.96	0.65
1:A:270:PRO:HD2	1:A:331:SER:O	1.96	0.65
1:A:335:PRO:HB2	1:A:339:ILE:HG13	1.79	0.64
1:B:258:MET:HE2	1:B:342:THR:CA	2.28	0.64
1:B:314:TRP:CD1	2:B:404:GDU:H6'1	2.33	0.64
1:B:307:PHE:HB3	1:B:308:PRO:HD2	1.81	0.62
1:A:151:ILE:HG13	1:A:151:ILE:O	2.00	0.61
1:B:191:ARG:HH21	1:B:194:HIS:HD2	1.48	0.61

Continued on next page...

Continued from previous page...

Atom-1	Atom-2	Interatomic distance (Å)	Clash overlap (Å)
1:A:205:ILE:O	1:A:209:GLN:HG3	2.01	0.61
1:A:336:ASN:C	1:A:336:ASN:ND2	2.55	0.60
1:A:351:LYS:O	1:A:352:LYS:HB2	2.01	0.59
1:A:157:LEU:O	1:A:161:GLN:HG3	2.01	0.59
1:B:258:MET:HE2	1:B:342:THR:N	2.18	0.59
1:A:349:ARG:H	1:A:349:ARG:CD	2.15	0.59
1:B:135:PRO:HD2	1:B:210:GLN:HE22	1.68	0.58
1:B:303:SER:O	1:B:328:ARG:HD3	2.03	0.58
1:A:304:ILE:HG22	1:A:328:ARG:HG3	1.86	0.57
1:B:195:LEU:HD22	1:B:199:LEU:HG	1.86	0.57
1:A:400:THR:H	5:A:861:DIO:H1'2	1.68	0.57
1:A:382:VAL:O	1:B:387:ARG:HD2	2.05	0.57
1:A:314:TRP:CD1	2:A:2:GDU:H6'1	2.40	0.56
1:A:272:HIS:HB3	1:A:334:ARG:HG2	1.88	0.56
1:A:154:ASP:HB3	1:A:157:LEU:HD13	1.88	0.56
1:A:167:LEU:HD11	1:A:387:ARG:HB3	1.87	0.55
1:A:191:ARG:HH21	1:A:194:HIS:CD2	2.24	0.55
1:B:227:ASN:C	1:B:227:ASN:HD22	2.10	0.55
1:B:233:ASN:HB3	1:B:378:LEU:HD22	1.90	0.54
1:B:230:LYS:HD3	1:B:398:ILE:HB	1.89	0.54
1:B:252:ASP:HB2	1:B:255:LEU:HD22	1.89	0.54
1:B:240:LEU:HD21	1:B:248:PHE:HZ	1.72	0.54
1:A:136:GLU:H	5:A:860:DIO:H22	1.74	0.53
1:B:236:PHE:CE2	1:B:375:LEU:HD21	2.43	0.53
1:B:258:MET:HE2	1:B:342:THR:C	2.29	0.53
1:A:237:LYS:HE3	1:A:375:LEU:CD1	2.39	0.52
1:B:160:GLN:HB2	7:B:1081:HOH:O	2.09	0.52
1:A:394:ILE:HG22	1:A:396:VAL:HG13	1.91	0.52
1:B:349:ARG:HG2	1:B:349:ARG:HH11	1.75	0.52
1:B:390:LEU:O	1:B:391:TYR:HB3	2.10	0.51
1:A:147:ILE:HB	1:A:343:ARG:HD2	1.92	0.51
1:A:154:ASP:OD1	1:A:156:LYS:N	2.44	0.51
1:A:180:HIS:CE1	1:A:265:ARG:HD2	2.45	0.51
1:B:327:PHE:CE1	1:B:367:LYS:HB2	2.45	0.51
1:A:258:MET:HE2	1:A:342:THR:C	2.30	0.51
1:A:336:ASN:HD21	1:A:338:VAL:HB	1.76	0.51
1:A:191:ARG:NH2	1:A:194:HIS:HD2	2.07	0.50
1:B:191:ARG:HD2	1:B:194:HIS:CD2	2.46	0.50
1:A:277:MET:CE	1:A:279:LYS:HD3	2.42	0.50
1:B:187:PRO:HD2	1:B:251:SER:O	2.11	0.50
1:B:342:THR:HG21	7:B:1386:HOH:O	2.10	0.50

Continued on next page...

Continued from previous page...

Atom-1	Atom-2	Interatomic distance (Å)	Clash overlap (Å)
1:B:223:GLU:HG2	7:B:1293:HOH:O	2.11	0.50
1:B:252:ASP:HB3	2:B:404:GDU:O3D	2.11	0.50
1:A:233:ASN:HB3	1:A:378:LEU:HD22	1.95	0.49
1:B:367:LYS:HE2	7:B:1039:HOH:O	2.13	0.49
1:A:167:LEU:CD1	1:A:387:ARG:HB3	2.43	0.49
1:A:381:MET:HE2	1:B:167:LEU:HD12	1.94	0.48
1:A:255:LEU:CD1	1:A:344:HIS:HD2	2.26	0.48
1:B:131:LEU:HD22	1:B:131:LEU:N	2.28	0.48
1:B:349:ARG:H	1:B:349:ARG:HH11	1.61	0.48
1:A:241:LYS:HB3	1:B:241:LYS:HD3	1.95	0.48
1:B:187:PRO:HD3	1:B:232:LEU:HD21	1.94	0.48
1:A:297:SER:OG	1:A:300:GLN:HG3	2.13	0.48
1:A:138:SER:HB3	1:A:141:LEU:HD13	1.95	0.48
1:A:346:ARG:HH21	1:A:346:ARG:HG3	1.79	0.48
1:A:255:LEU:HD23	1:A:293:VAL:HG23	1.96	0.48
1:A:151:ILE:O	1:A:152:PRO:C	2.53	0.47
1:B:131:LEU:HB2	1:B:177:ILE:HG12	1.96	0.47
1:B:147:ILE:HB	1:B:343:ARG:HD2	1.96	0.47
1:B:227:ASN:ND2	1:B:230:LYS:H	2.11	0.47
1:A:315:GLY:HA2	7:A:1297:HOH:O	2.15	0.47
1:B:387:ARG:HH11	1:B:387:ARG:HG3	1.80	0.47
1:B:346:ARG:HH21	1:B:346:ARG:HG3	1.80	0.47
1:B:349:ARG:NH1	1:B:349:ARG:HG2	2.29	0.47
1:A:270:PRO:HG2	1:A:325:LEU:HD22	1.97	0.46
1:B:175:ASP:OD2	1:B:175:ASP:N	2.45	0.46
1:A:154:ASP:CB	1:A:157:LEU:HD13	2.44	0.46
1:A:349:ARG:CD	1:A:349:ARG:N	2.79	0.46
1:B:167:LEU:HD23	1:B:389:PRO:HA	1.96	0.46
1:A:227:ASN:HD22	1:A:227:ASN:C	2.19	0.46
1:A:237:LYS:HE3	1:A:375:LEU:HD11	1.97	0.46
1:A:320:ASP:O	1:A:324:ARG:HG3	2.14	0.46
1:A:275:VAL:HG11	1:A:335:PRO:HD2	1.98	0.45
1:A:164:LYS:HB3	1:A:171:TYR:HE1	1.81	0.45
1:A:166:LYS:HE3	1:A:166:LYS:HB2	1.75	0.45
1:A:314:TRP:NE1	2:A:2:GDU:H6'1	2.32	0.45
1:B:258:MET:CE	1:B:282:PHE:HE2	2.28	0.45
1:B:299:GLN:CG	7:B:919:HOH:O	2.64	0.45
1:A:343:ARG:HH21	1:A:343:ARG:HG2	1.82	0.45
1:B:147:ILE:HB	1:B:343:ARG:CD	2.47	0.45
1:A:187:PRO:HD3	1:A:232:LEU:HD21	1.99	0.45
1:A:220:GLN:HB2	1:A:231:LEU:HD21	1.98	0.45

Continued on next page...

Continued from previous page...

Atom-1	Atom-2	Interatomic distance (Å)	Clash overlap (Å)
1:A:134:CYS:HB3	1:A:135:PRO:HD2	1.98	0.45
1:A:277:MET:HE1	7:A:982:HOH:O	2.16	0.44
1:B:227:ASN:HB2	1:B:312:TRP:CE3	2.52	0.44
1:A:154:ASP:CG	1:A:157:LEU:HD13	2.37	0.44
1:A:167:LEU:HD11	1:A:387:ARG:CB	2.48	0.44
1:A:167:LEU:HD12	1:B:381:MET:CE	2.47	0.44
1:A:188:PHE:O	1:A:219:ASN:HA	2.17	0.44
1:A:277:MET:HE2	1:A:279:LYS:HD3	2.00	0.44
1:B:336:ASN:C	1:B:336:ASN:ND2	2.69	0.44
1:A:335:PRO:HB2	1:A:339:ILE:CG1	2.48	0.43
1:B:379:THR:OG1	6:B:870:MES:H21	2.18	0.43
1:A:164:LYS:HB3	1:A:171:TYR:CE1	2.53	0.43
1:B:180:HIS:CE1	1:B:265:ARG:HD2	2.54	0.43
1:A:191:ARG:NH2	1:A:194:HIS:CD2	2.85	0.43
1:B:179:PRO:HG2	1:B:180:HIS:CE1	2.53	0.43
1:A:195:LEU:HD22	1:A:199:LEU:HG	2.01	0.42
1:A:382:VAL:HA	1:A:396:VAL:HG12	2.01	0.42
1:B:314:TRP:HB2	1:B:353:ASN:O	2.19	0.42
1:A:336:ASN:HD21	1:A:339:ILE:N	2.12	0.42
1:B:223:GLU:O	1:B:352:LYS:HE3	2.20	0.42
1:A:303:SER:O	1:A:328:ARG:HD3	2.20	0.41
1:B:138:SER:HB3	1:B:141:LEU:HD13	2.01	0.41
1:A:154:ASP:OD1	1:A:156:LYS:HE2	2.21	0.41
1:B:267:PHE:CD1	1:B:267:PHE:N	2.88	0.41
1:A:167:LEU:C	1:A:167:LEU:HD13	2.41	0.41
1:A:274:SER:HA	1:A:342:THR:HG21	2.02	0.41
1:A:155:LEU:HD22	1:A:390:LEU:HD12	2.03	0.41
1:A:252:ASP:HB2	1:A:255:LEU:HD22	2.02	0.41
1:A:318:ASP:OD2	1:A:318:ASP:N	2.54	0.41
1:B:243:TYR:HB3	1:B:245:TYR:CE1	2.55	0.41
1:B:272:HIS:HB3	1:B:334:ARG:HG2	2.01	0.41
1:A:308:PRO:HB3	1:A:324:ARG:NH1	2.35	0.41
1:A:367:LYS:NZ	7:A:1248:HOH:O	2.53	0.41
1:B:192:GLN:O	1:B:196:LYS:HG3	2.21	0.41
1:B:345:ILE:O	1:B:346:ARG:C	2.57	0.41
1:B:389:PRO:HG2	7:B:915:HOH:O	2.21	0.41
1:A:153:VAL:CG2	1:A:196:LYS:HB3	2.50	0.40
1:A:314:TRP:HB2	1:A:353:ASN:O	2.20	0.40
1:A:343:ARG:HG2	1:A:343:ARG:NH2	2.36	0.40
1:B:400:THR:HB	1:B:401:PRO:HD2	2.03	0.40
1:A:359:ARG:O	1:A:363:ILE:HG23	2.21	0.40

Continued on next page...

Continued from previous page...

Atom-1	Atom-2	Interatomic distance (Å)	Clash overlap (Å)
1:B:307:PHE:CD1	1:B:321:ILE:HG12	2.57	0.40
1:B:140:LEU:O	1:B:208:ARG:HD2	2.22	0.40
1:B:312:TRP:NE1	1:B:401:PRO:HA	2.36	0.40
1:B:354:GLU:O	1:B:355:PRO:C	2.60	0.40

There are no symmetry-related clashes.

5.3 Torsion angles [i](#)

5.3.1 Protein backbone [i](#)

In the following table, the Percentiles column shows the percent Ramachandran outliers of the chain as a percentile score with respect to all X-ray entries followed by that with respect to entries of similar resolution.

The Analysed column shows the number of residues for which the backbone conformation was analysed, and the total number of residues.

Mol	Chain	Analysed	Favoured	Allowed	Outliers	Percentiles
1	A	270/286 (94%)	254 (94%)	15 (6%)	1 (0%)	34 42
1	B	270/286 (94%)	259 (96%)	11 (4%)	0	100 100
All	All	540/572 (94%)	513 (95%)	26 (5%)	1 (0%)	47 58

All (1) Ramachandran outliers are listed below:

Mol	Chain	Res	Type
1	A	152	PRO

5.3.2 Protein sidechains [i](#)

In the following table, the Percentiles column shows the percent sidechain outliers of the chain as a percentile score with respect to all X-ray entries followed by that with respect to entries of similar resolution.

The Analysed column shows the number of residues for which the sidechain conformation was analysed, and the total number of residues.

Mol	Chain	Analysed	Rotameric	Outliers	Percentiles
1	A	245/254 (96%)	235 (96%)	10 (4%)	30 43

Continued on next page...

Continued from previous page...

Mol	Chain	Analysed	Rotameric	Outliers	Percentiles	
1	B	245/254 (96%)	227 (93%)	18 (7%)	14	18
All	All	490/508 (96%)	462 (94%)	28 (6%)	20	28

All (28) residues with a non-rotameric sidechain are listed below:

Mol	Chain	Res	Type
1	A	146	LEU
1	A	174	MET
1	A	195	LEU
1	A	227	ASN
1	A	231	LEU
1	A	255	LEU
1	A	336	ASN
1	A	342	THR
1	A	349	ARG
1	A	401	PRO
1	B	131	LEU
1	B	141	LEU
1	B	167	LEU
1	B	175	ASP
1	B	195	LEU
1	B	227	ASN
1	B	231	LEU
1	B	242	ASP
1	B	255	LEU
1	B	270	PRO
1	B	283	SER
1	B	328	ARG
1	B	336	ASN
1	B	349	ARG
1	B	350	ASP
1	B	352	LYS
1	B	372	SER
1	B	381	MET

Sometimes sidechains can be flipped to improve hydrogen bonding and reduce clashes. All (14) such sidechains are listed below:

Mol	Chain	Res	Type
1	A	161	GLN
1	A	190	ASN
1	A	194	HIS

Continued on next page...

Continued from previous page...

Mol	Chain	Res	Type
1	A	207	GLN
1	A	210	GLN
1	A	227	ASN
1	A	336	ASN
1	B	161	GLN
1	B	190	ASN
1	B	194	HIS
1	B	207	GLN
1	B	210	GLN
1	B	227	ASN
1	B	336	ASN

5.3.3 RNA [i](#)

There are no RNA molecules in this entry.

5.4 Non-standard residues in protein, DNA, RNA chains [i](#)

There are no non-standard protein/DNA/RNA residues in this entry.

5.5 Carbohydrates [i](#)

There are no monosaccharides in this entry.

5.6 Ligand geometry [i](#)

Of 12 ligands modelled in this entry, 2 are monoatomic - leaving 10 for Mogul analysis.

In the following table, the Counts columns list the number of bonds (or angles) for which Mogul statistics could be retrieved, the number of bonds (or angles) that are observed in the model and the number of bonds (or angles) that are defined in the Chemical Component Dictionary. The Link column lists molecule types, if any, to which the group is linked. The Z score for a bond length (or angle) is the number of standard deviations the observed value is removed from the expected value. A bond length (or angle) with $|Z| > 2$ is considered an outlier worth inspection. RMSZ is the root-mean-square of all Z scores of the bond lengths (or angles).

Mol	Type	Chain	Res	Link	Bond lengths			Bond angles		
					Counts	RMSZ	# Z > 2	Counts	RMSZ	# Z > 2
4	SO4	A	859	-	4,4,4	1.89	2 (50%)	6,6,6	0.89	0
4	SO4	B	856	-	4,4,4	1.94	1 (25%)	6,6,6	0.92	0

Mol	Type	Chain	Res	Link	Bond lengths			Bond angles		
					Counts	RMSZ	# Z > 2	Counts	RMSZ	# Z > 2
4	SO4	A	858	-	4,4,4	1.88	2 (50%)	6,6,6	0.88	0
6	MES	B	870	-	12,12,12	1.38	2 (16%)	14,16,16	0.76	0
5	DIO	A	861	-	6,6,6	0.83	0	6,6,6	1.54	2 (33%)
5	DIO	A	860	-	6,6,6	0.70	0	6,6,6	1.48	2 (33%)
4	SO4	B	857	-	4,4,4	1.94	2 (50%)	6,6,6	0.88	0
2	GDU	B	404	3	35,38,38	1.16	4 (11%)	53,58,58	1.87	13 (24%)
2	GDU	A	2	3	35,38,38	1.08	3 (8%)	53,58,58	1.90	13 (24%)
4	SO4	B	855	-	4,4,4	1.87	2 (50%)	6,6,6	0.91	0

In the following table, the Chirals column lists the number of chiral outliers, the number of chiral centers analysed, the number of these observed in the model and the number defined in the Chemical Component Dictionary. Similar counts are reported in the Torsion and Rings columns. '-' means no outliers of that kind were identified.

Mol	Type	Chain	Res	Link	Chirals	Torsions	Rings
6	MES	B	870	-	-	1/6/14/14	0/1/1/1
5	DIO	A	861	-	-	-	0/1/1/1
5	DIO	A	860	-	-	-	0/1/1/1
2	GDU	B	404	3	1/1/11/11	8/23/59/59	0/3/3/3
2	GDU	A	2	3	1/1/11/11	7/23/59/59	0/3/3/3

All (18) bond length outliers are listed below:

Mol	Chain	Res	Type	Atoms	Z	Observed(Å)	Ideal(Å)
4	B	856	SO4	O1-S	3.31	1.64	1.46
4	B	857	SO4	O1-S	3.30	1.63	1.46
4	A	858	SO4	O1-S	3.15	1.63	1.46
4	A	859	SO4	O1-S	3.13	1.63	1.46
4	B	855	SO4	O1-S	3.08	1.62	1.46
2	B	404	GDU	O5'-C1'	3.03	1.49	1.41
2	A	2	GDU	PA-O1A	2.69	1.60	1.50
6	B	870	MES	C5-N4	2.68	1.54	1.46
2	B	404	GDU	C2-N1	2.62	1.42	1.38
2	B	404	GDU	PA-O1A	2.54	1.59	1.50
6	B	870	MES	C3-N4	2.45	1.53	1.46
2	A	2	GDU	O5'-C1'	2.43	1.48	1.41
2	A	2	GDU	O4-C4	-2.28	1.20	1.24
4	A	859	SO4	O3-S	-2.08	1.30	1.47
2	B	404	GDU	PA-O2A	-2.08	1.45	1.55
4	B	855	SO4	O3-S	-2.07	1.30	1.47

Continued on next page...

Continued from previous page...

Mol	Chain	Res	Type	Atoms	Z	Observed(Å)	Ideal(Å)
4	A	858	SO4	O3-S	-2.01	1.31	1.47
4	B	857	SO4	O3-S	-2.01	1.31	1.47

All (30) bond angle outliers are listed below:

Mol	Chain	Res	Type	Atoms	Z	Observed(°)	Ideal(°)
2	B	404	GDU	C4'-C3'-C2'	7.10	123.23	110.82
2	A	2	GDU	C4'-C3'-C2'	6.94	122.93	110.82
2	B	404	GDU	O3'-C3'-C2'	4.25	120.17	110.35
2	A	2	GDU	O3'-C3'-C2'	4.17	119.98	110.35
2	B	404	GDU	O4D-C1D-N1	3.75	116.92	108.36
2	A	2	GDU	O3A-PB-O3B	-3.56	95.30	102.48
2	A	2	GDU	O4D-C1D-N1	2.86	114.90	108.36
2	A	2	GDU	O4'-C4'-C3'	-2.86	103.74	110.35
2	A	2	GDU	O3B-PB-O1B	-2.84	98.82	109.47
2	B	404	GDU	O4'-C4'-C3'	-2.80	103.88	110.35
2	A	2	GDU	O2-C2-N1	2.77	126.47	122.79
2	B	404	GDU	O3B-C1'-C2'	2.60	113.15	108.38
5	A	861	DIO	C2'-O1'-C1'	2.60	118.56	109.89
2	B	404	GDU	O3B-PB-O1B	-2.60	99.73	109.47
5	A	860	DIO	C2'-O1'-C1'	2.56	118.45	109.89
2	A	2	GDU	O3'-C3'-C4'	2.53	116.21	110.35
2	A	2	GDU	O3B-C1'-C2'	2.52	112.99	108.38
2	B	404	GDU	O3A-PB-O3B	-2.50	97.44	102.48
2	B	404	GDU	O2-C2-N1	2.48	126.09	122.79
2	A	2	GDU	O5'-C5'-C6'	2.35	112.27	106.44
2	B	404	GDU	O3'-C3'-C4'	2.34	115.77	110.35
2	B	404	GDU	C1'-C2'-C3'	2.29	114.77	110.00
2	A	2	GDU	O5'-C1'-C2'	-2.28	105.53	110.35
2	A	2	GDU	C6'-C5'-C4'	2.19	118.12	113.00
2	B	404	GDU	O5'-C5'-C6'	2.18	111.86	106.44
2	B	404	GDU	C6'-C5'-C4'	2.12	117.98	113.00
5	A	861	DIO	C2-O1-C1	2.11	116.95	109.89
2	A	2	GDU	O5D-PA-O1A	2.07	117.14	109.07
2	B	404	GDU	O4D-C4D-C5D	2.05	116.13	109.37
5	A	860	DIO	C2-O1-C1	2.05	116.73	109.89

All (2) chirality outliers are listed below:

Mol	Chain	Res	Type	Atom
2	A	2	GDU	C3'
2	B	404	GDU	C3'

All (16) torsion outliers are listed below:

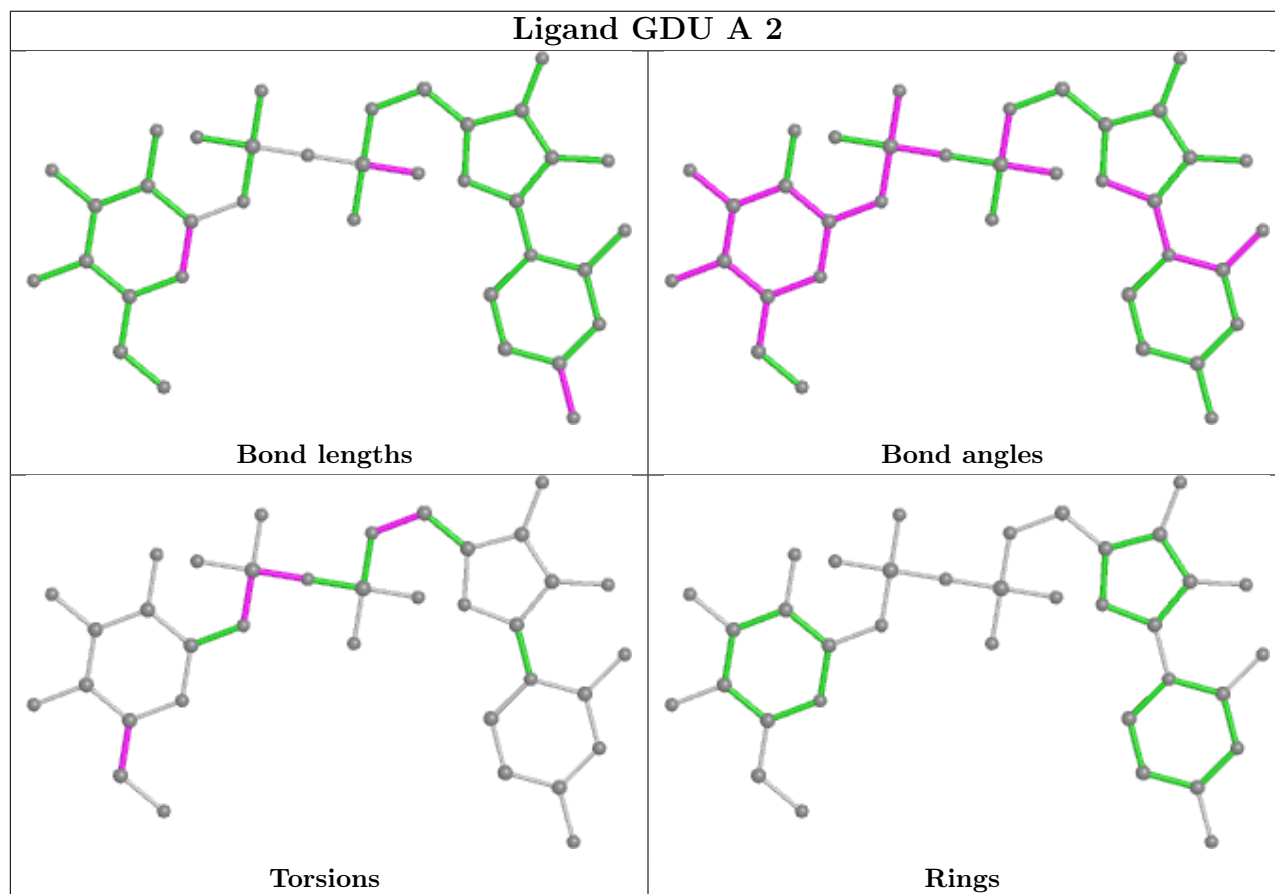
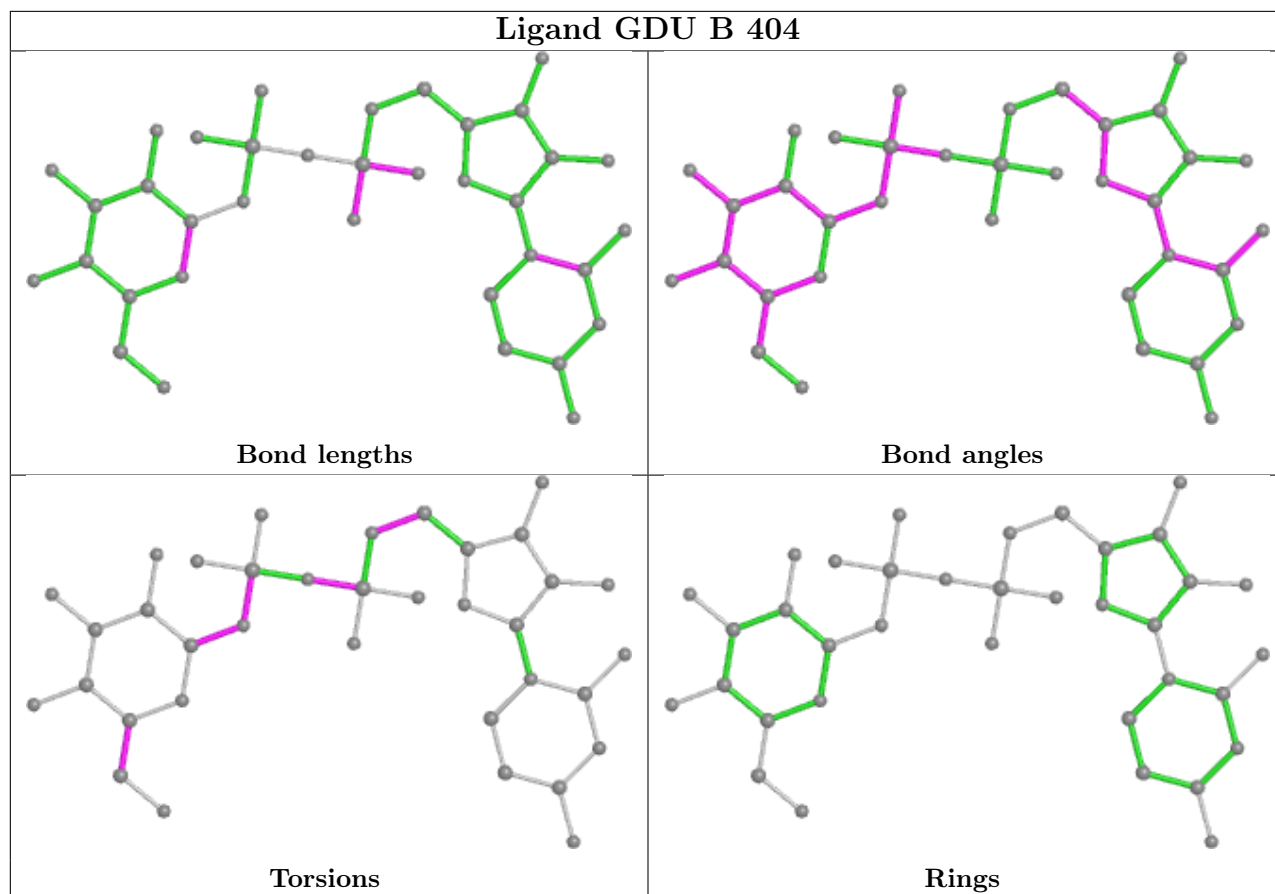
Mol	Chain	Res	Type	Atoms
2	A	2	GDU	C1'-O3B-PB-O2B
2	B	404	GDU	C1'-O3B-PB-O2B
2	B	404	GDU	C4'-C5'-C6'-O6'
2	B	404	GDU	O5'-C5'-C6'-O6'
2	A	2	GDU	C1'-O3B-PB-O3A
2	B	404	GDU	C1'-O3B-PB-O3A
2	A	2	GDU	O5'-C5'-C6'-O6'
2	A	2	GDU	C4'-C5'-C6'-O6'
2	A	2	GDU	PA-O3A-PB-O1B
2	B	404	GDU	C1'-O3B-PB-O1B
2	B	404	GDU	C4D-C5D-O5D-PA
2	A	2	GDU	C4D-C5D-O5D-PA
6	B	870	MES	C8-C7-N4-C5
2	B	404	GDU	C2'-C1'-O3B-PB
2	A	2	GDU	C1'-O3B-PB-O1B
2	B	404	GDU	PB-O3A-PA-O2A

There are no ring outliers.

5 monomers are involved in 7 short contacts:

Mol	Chain	Res	Type	Clashes	Symm-Clashes
6	B	870	MES	1	0
5	A	861	DIO	1	0
5	A	860	DIO	1	0
2	B	404	GDU	2	0
2	A	2	GDU	2	0

The following is a two-dimensional graphical depiction of Mogul quality analysis of bond lengths, bond angles, torsion angles, and ring geometry for all instances of the Ligand of Interest. In addition, ligands with molecular weight > 250 and outliers as shown on the validation Tables will also be included. For torsion angles, if less than 5% of the Mogul distribution of torsion angles is within 10 degrees of the torsion angle in question, then that torsion angle is considered an outlier. Any bond that is central to one or more torsion angles identified as an outlier by Mogul will be highlighted in the graph. For rings, the root-mean-square deviation (RMSD) between the ring in question and similar rings identified by Mogul is calculated over all ring torsion angles. If the average RMSD is greater than 60 degrees and the minimal RMSD between the ring in question and any Mogul-identified rings is also greater than 60 degrees, then that ring is considered an outlier. The outliers are highlighted in purple. The color gray indicates Mogul did not find sufficient equivalents in the CSD to analyse the geometry.



5.7 Other polymers [i](#)

There are no such residues in this entry.

5.8 Polymer linkage issues [i](#)

There are no chain breaks in this entry.

6 Fit of model and data [i](#)

6.1 Protein, DNA and RNA chains [i](#)

In the following table, the column labelled '#RSRZ > 2' contains the number (and percentage) of RSRZ outliers, followed by percent RSRZ outliers for the chain as percentile scores relative to all X-ray entries and entries of similar resolution. The OWAB column contains the minimum, median, 95th percentile and maximum values of the occupancy-weighted average B-factor per residue. The column labelled 'Q < 0.9' lists the number of (and percentage) of residues with an average occupancy less than 0.9.

Mol	Chain	Analysed	<RSRZ>	#RSRZ>2	OWAB(Å ²)	Q<0.9
1	A	272/286 (95%)	-0.19	1 (0%) 92 95	24, 33, 55, 63	0
1	B	272/286 (95%)	-0.23	1 (0%) 92 95	19, 31, 45, 60	0
All	All	544/572 (95%)	-0.21	2 (0%) 92 95	19, 32, 50, 63	0

All (2) RSRZ outliers are listed below:

Mol	Chain	Res	Type	RSRZ
1	A	160	GLN	2.8
1	B	402	SER	2.3

6.2 Non-standard residues in protein, DNA, RNA chains [i](#)

There are no non-standard protein/DNA/RNA residues in this entry.

6.3 Carbohydrates [i](#)

There are no monosaccharides in this entry.

6.4 Ligands [i](#)

In the following table, the Atoms column lists the number of modelled atoms in the group and the number defined in the chemical component dictionary. The B-factors column lists the minimum, median, 95th percentile and maximum values of B factors of atoms in the group. The column labelled 'Q < 0.9' lists the number of atoms with occupancy less than 0.9.

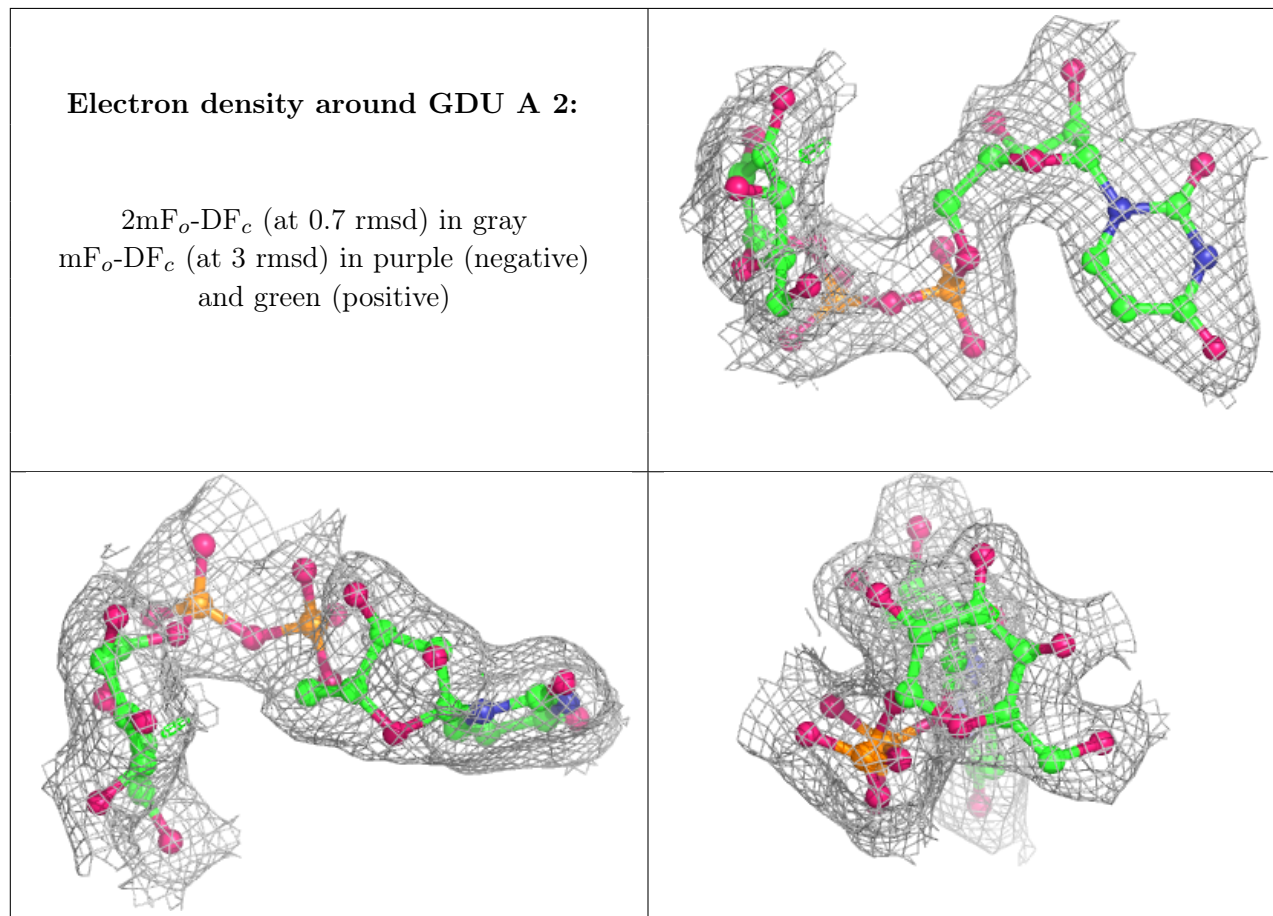
Mol	Type	Chain	Res	Atoms	RSCC	RSR	B-factors(Å ²)	Q<0.9
4	SO4	B	856	5/5	0.68	0.29	104,104,104,106	0
6	MES	B	870	12/12	0.73	0.33	84,85,87,88	0
5	DIO	A	861	6/6	0.78	0.18	71,72,72,72	0

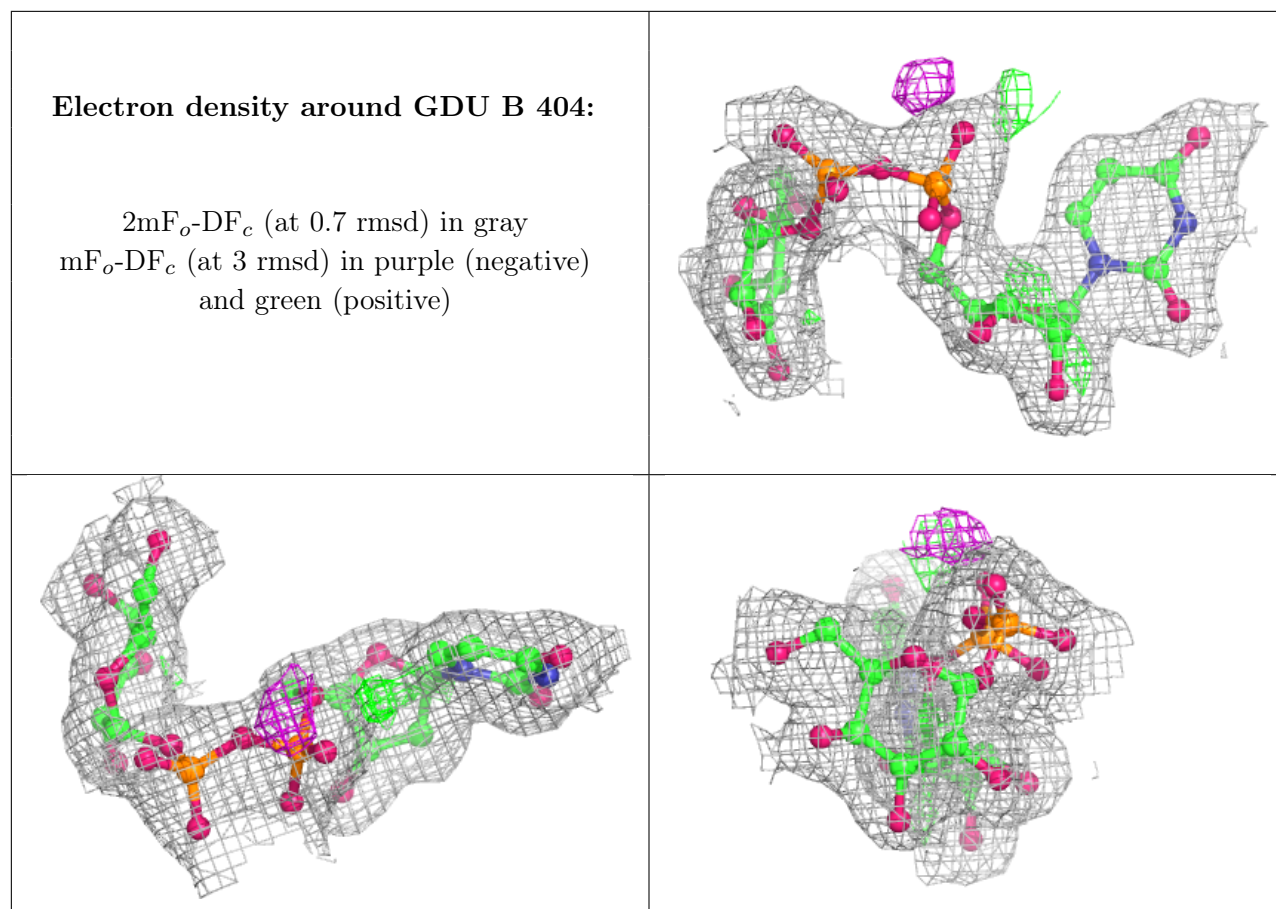
Continued on next page...

Continued from previous page...

Mol	Type	Chain	Res	Atoms	RSCC	RSR	B-factors(\AA^2)	Q<0.9
4	SO4	B	857	5/5	0.82	0.44	107,107,108,108	0
4	SO4	A	858	5/5	0.91	0.19	82,82,82,83	0
5	DIO	A	860	6/6	0.93	0.18	75,75,75,75	0
4	SO4	A	859	5/5	0.93	0.13	83,83,84,84	0
4	SO4	B	855	5/5	0.93	0.30	90,91,91,91	0
2	GDU	A	2	36/36	0.97	0.12	23,26,32,34	0
2	GDU	B	404	36/36	0.97	0.11	23,26,29,33	0
3	MG	A	1	1/1	0.98	0.10	22,22,22,22	0
3	MG	B	403	1/1	0.99	0.04	24,24,24,24	0

The following is a graphical depiction of the model fit to experimental electron density of all instances of the Ligand of Interest. In addition, ligands with molecular weight > 250 and outliers as shown on the geometry validation Tables will also be included. Each fit is shown from different orientation to approximate a three-dimensional view.





6.5 Other polymers [i](#)

There are no such residues in this entry.