



Full wwPDB X-ray Structure Validation Report ⓘ

Feb 4, 2023 – 01:43 PM EST

PDB ID : 7TVA
Title : Stat5a Core in complex with AK2292
Authors : Meagher, J.L.; Stuckey, J.A.
Deposited on : 2022-02-04
Resolution : 2.83 Å(reported)

This is a Full wwPDB X-ray Structure Validation Report for a publicly released PDB entry.

We welcome your comments at validation@mail.wwpdb.org

A user guide is available at

<https://www.wwpdb.org/validation/2017/XrayValidationReportHelp>

with specific help available everywhere you see the ⓘ symbol.

The types of validation reports are described at

<http://www.wwpdb.org/validation/2017/FAQs#types>.

The following versions of software and data (see [references ⓘ](#)) were used in the production of this report:

MolProbity : 4.02b-467
Mogul : 1.8.5 (274361), CSD as541be (2020)
Xtriage (Phenix) : 1.13
EDS : 2.32.1
buster-report : 1.1.7 (2018)
Percentile statistics : 20191225.v01 (using entries in the PDB archive December 25th 2019)
Refmac : 5.8.0158
CCP4 : 7.0.044 (Gargrove)
Ideal geometry (proteins) : Engh & Huber (2001)
Ideal geometry (DNA, RNA) : Parkinson et al. (1996)
Validation Pipeline (wwPDB-VP) : 2.32.1

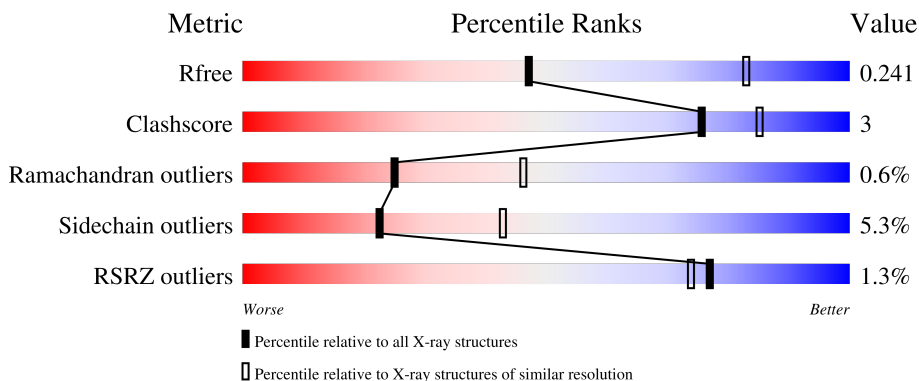
1 Overall quality at a glance

The following experimental techniques were used to determine the structure:

X-RAY DIFFRACTION

The reported resolution of this entry is 2.83 Å.

Percentile scores (ranging between 0-100) for global validation metrics of the entry are shown in the following graphic. The table shows the number of entries on which the scores are based.



Metric	Whole archive (#Entries)	Similar resolution (#Entries, resolution range(Å))
R_{free}	130704	1031 (2.86-2.82)
Clashscore	141614	1078 (2.86-2.82)
Ramachandran outliers	138981	1050 (2.86-2.82)
Sidechain outliers	138945	1051 (2.86-2.82)
RSRZ outliers	127900	1019 (2.86-2.82)

The table below summarises the geometric issues observed across the polymeric chains and their fit to the electron density. The red, orange, yellow and green segments of the lower bar indicate the fraction of residues that contain outliers for ≥ 3 , 2, 1 and 0 types of geometric quality criteria respectively. A grey segment represents the fraction of residues that are not modelled. The numeric value for each fraction is indicated below the corresponding segment, with a dot representing fractions $\leq 5\%$. The upper red bar (where present) indicates the fraction of residues that have poor fit to the electron density. The numeric value is given above the bar.

Mol	Chain	Length	Quality of chain
1	A	573	 2% 85% 11% .
1	B	573	 2% 86% 10% . .

2 Entry composition

There are 5 unique types of molecules in this entry. The entry contains 9195 atoms, of which 0 are hydrogens and 0 are deuteriums.

In the tables below, the ZeroOcc column contains the number of atoms modelled with zero occupancy, the AltConf column contains the number of residues with at least one atom in alternate conformation and the Trace column contains the number of residues modelled with at most 2 atoms.

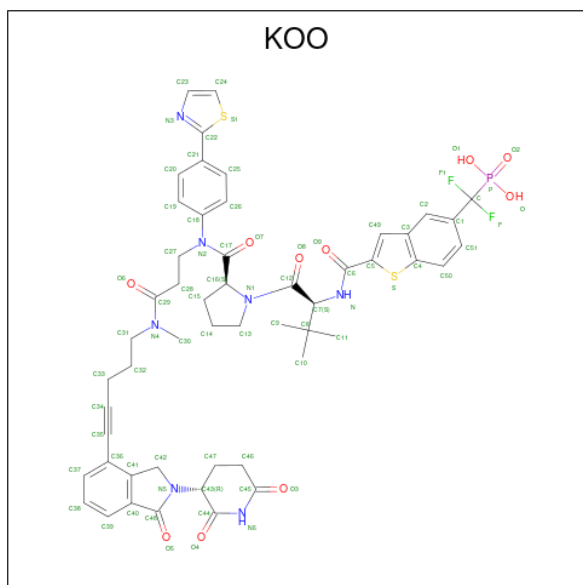
- Molecule 1 is a protein called Signal transducer and activator of transcription 5A.

Mol	Chain	Residues	Atoms					ZeroOcc	AltConf	Trace
			Total	C	N	O	S			
1	A	556	4397	2808	759	818	12	0	2	0
1	B	556	4397	2813	752	820	12	0	3	0

There are 6 discrepancies between the modelled and reference sequences:

Chain	Residue	Modelled	Actual	Comment	Reference
A	133	SER	-	expression tag	UNP P42229
A	134	ASN	-	expression tag	UNP P42229
A	135	ALA	-	expression tag	UNP P42229
B	133	SER	-	expression tag	UNP P42229
B	134	ASN	-	expression tag	UNP P42229
B	135	ALA	-	expression tag	UNP P42229

- Molecule 2 is N-{5-[difluoro(phosphono)methyl]-1-benzothiophene-2-carbonyl}-3-methyl-L-valyl-L-prolyl-N-(5-{2-[(3R)-2,6-dioxopiperidin-3-yl]-1-oxo-2,3-dihydro-1H-isoindol-4-yl}pent-4-yn-1-yl)-N-methyl-N 3 -[4-(1,3-thiazol-2-yl)phenyl]-beta-alaninamide (three-letter code: KOO) (formula: C₅₂H₅₄F₂N₇O₁₀PS₂) (labeled as "Ligand of Interest" by depositor).



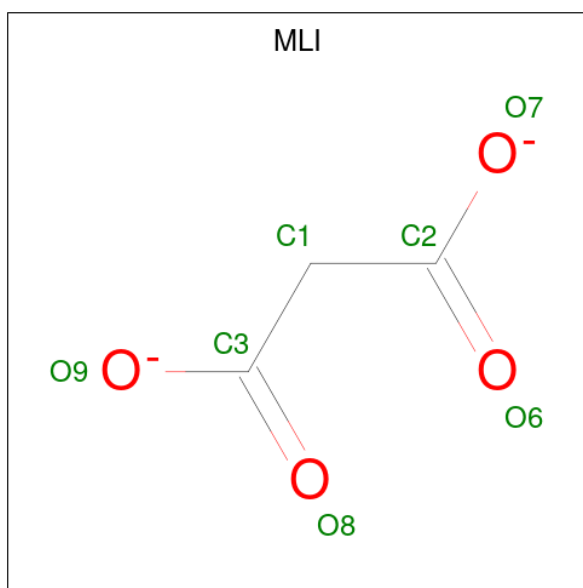
Mol	Chain	Residues	Atoms						ZeroOcc	AltConf	
			Total	C	F	N	O	P			S
2	A	1	Total	C	F	N	O	P	S	0	0
			74	52	2	7	10	1	2		
2	B	1	Total	C	F	N	O	P	S	0	0
			74	52	2	7	10	1	2		

- Molecule 3 is DI(HYDROXYETHYL)ETHER (three-letter code: PEG) (formula: $C_4H_{10}O_3$).



Mol	Chain	Residues	Atoms		ZeroOcc	AltConf
			Total	C O		
3	A	1	Total	C O	0	0
			7	4 3		
3	B	1	Total	C O	0	0
			7	4 3		

- Molecule 4 is MALONATE ION (three-letter code: MLI) (formula: $C_3H_2O_4$).



Mol	Chain	Residues	Atoms	ZeroOcc	AltConf
4	B	1	Total C O 7 3 4	0	0

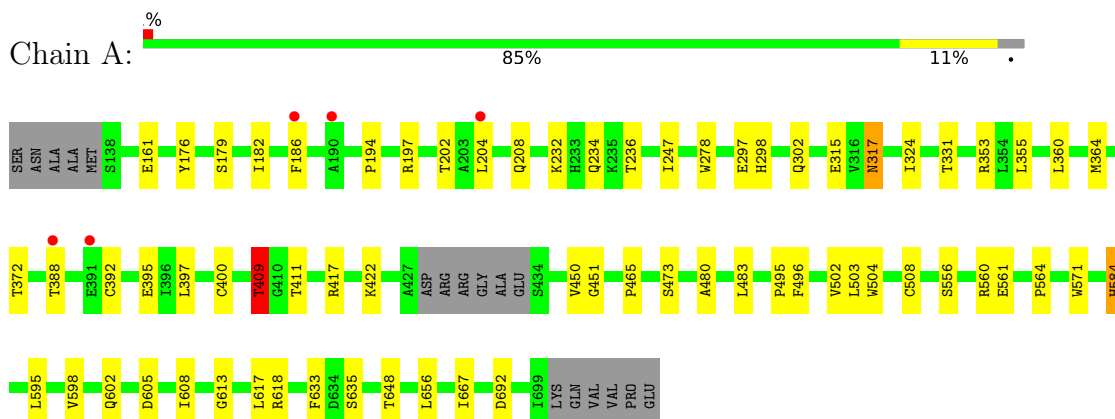
- Molecule 5 is water.

Mol	Chain	Residues	Atoms	ZeroOcc	AltConf
5	A	122	Total O 122 122	0	0
5	B	110	Total O 110 110	0	0

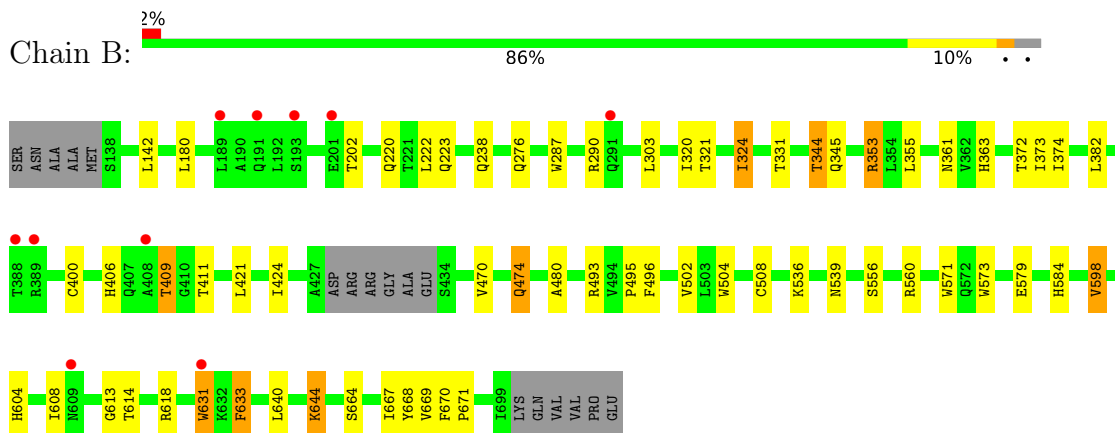
3 Residue-property plots [i](#)

These plots are drawn for all protein, RNA, DNA and oligosaccharide chains in the entry. The first graphic for a chain summarises the proportions of the various outlier classes displayed in the second graphic. The second graphic shows the sequence view annotated by issues in geometry and electron density. Residues are color-coded according to the number of geometric quality criteria for which they contain at least one outlier: green = 0, yellow = 1, orange = 2 and red = 3 or more. A red dot above a residue indicates a poor fit to the electron density ($RSRZ > 2$). Stretches of 2 or more consecutive residues without any outlier are shown as a green connector. Residues present in the sample, but not in the model, are shown in grey.

- Molecule 1: Signal transducer and activator of transcription 5A



- Molecule 1: Signal transducer and activator of transcription 5A



4 Data and refinement statistics i

Property	Value	Source
Space group	H 3	Depositor
Cell constants a, b, c, α , β , γ	232.48Å 232.48Å 112.47Å 90.00° 90.00° 120.00°	Depositor
Resolution (Å)	37.51 – 2.83 37.50 – 2.83	Depositor EDS
% Data completeness (in resolution range)	92.6 (37.51-2.83) 92.7 (37.50-2.83)	Depositor EDS
R_{merge}	0.08	Depositor
R_{sym}	(Not available)	Depositor
$\langle I/\sigma(I) \rangle$ ¹	2.07 (at 2.85Å)	Xtrriage
Refinement program	BUSTER 2.10.4 (3-FEB-2022)	Depositor
R, R_{free}	0.203 , 0.246 0.202 , 0.241	Depositor DCC
R_{free} test set	2498 reflections (5.02%)	wwPDB-VP
Wilson B-factor (Å ²)	48.7	Xtrriage
Anisotropy	0.068	Xtrriage
Bulk solvent k_{sol} (e/Å ³), B_{sol} (Å ²)	0.33 , 33.6	EDS
L-test for twinning ²	$\langle L \rangle = 0.45$, $\langle L^2 \rangle = 0.28$	Xtrriage
Estimated twinning fraction	0.076 for h,-h-k,-l	Xtrriage
F_o, F_c correlation	0.93	EDS
Total number of atoms	9195	wwPDB-VP
Average B, all atoms (Å ²)	56.0	wwPDB-VP

Xtrriage's analysis on translational NCS is as follows: *The largest off-origin peak in the Patterson function is 3.36% of the height of the origin peak. No significant pseudotranslation is detected.*

¹Intensities estimated from amplitudes.

²Theoretical values of $\langle |L| \rangle$, $\langle L^2 \rangle$ for acentric reflections are 0.5, 0.333 respectively for untwinned datasets, and 0.375, 0.2 for perfectly twinned datasets.

5 Model quality [i](#)

5.1 Standard geometry [i](#)

Bond lengths and bond angles in the following residue types are not validated in this section: MLI, PEG, KOO

The Z score for a bond length (or angle) is the number of standard deviations the observed value is removed from the expected value. A bond length (or angle) with $|Z| > 5$ is considered an outlier worth inspection. RMSZ is the root-mean-square of all Z scores of the bond lengths (or angles).

Mol	Chain	Bond lengths		Bond angles	
		RMSZ	# Z >5	RMSZ	# Z >5
1	A	0.33	0/4501	0.53	0/6121
1	B	0.31	0/4504	0.51	0/6127
All	All	0.32	0/9005	0.52	0/12248

There are no bond length outliers.

There are no bond angle outliers.

There are no chirality outliers.

There are no planarity outliers.

5.2 Too-close contacts [i](#)

In the following table, the Non-H and H(model) columns list the number of non-hydrogen atoms and hydrogen atoms in the chain respectively. The H(added) column lists the number of hydrogen atoms added and optimized by MolProbity. The Clashes column lists the number of clashes within the asymmetric unit, whereas Symm-Clashes lists symmetry-related clashes.

Mol	Chain	Non-H	H(model)	H(added)	Clashes	Symm-Clashes
1	A	4397	0	4272	29	0
1	B	4397	0	4281	26	0
2	A	74	0	0	1	0
2	B	74	0	0	1	0
3	A	7	0	10	0	0
3	B	7	0	10	0	0
4	B	7	0	2	0	0
5	A	122	0	0	0	0
5	B	110	0	0	0	0
All	All	9195	0	8575	54	0

The all-atom clashscore is defined as the number of clashes found per 1000 atoms (including

hydrogen atoms). The all-atom clashscore for this structure is 3.

All (54) close contacts within the same asymmetric unit are listed below, sorted by their clash magnitude.

Atom-1	Atom-2	Interatomic distance (Å)	Clash overlap (Å)
1:A:584:HIS:NE2	1:A:648:THR:HG22	1.96	0.81
1:A:556:SER:HA	1:A:560:ARG:HB2	1.70	0.74
1:B:556:SER:HA	1:B:560:ARG:HB2	1.74	0.69
1:B:598:VAL:HG23	1:B:618:ARG:HG3	1.76	0.66
1:A:618:ARG:NH2	2:A:801:KOO:O	2.31	0.64
1:A:409:THR:HB	1:A:411:THR:HG22	1.84	0.60
1:A:194:PRO:HA	1:A:197:ARG:HB3	1.84	0.58
1:A:247:ILE:HD13	1:A:278:TRP:HB3	1.85	0.58
1:B:361:ASN:HA	1:B:363:HIS:CE1	2.38	0.58
1:B:604:HIS:HA	1:B:640:LEU:HG	1.85	0.57
1:B:470:VAL:H	1:B:474:GLN:NE2	2.03	0.57
1:B:480:ALA:HB2	1:B:571:TRP:CD1	2.40	0.56
1:A:331:THR:HB	1:A:355:LEU:HB2	1.89	0.54
1:A:298:HIS:CE1	1:A:302:GLN:HE21	2.24	0.54
1:A:397:LEU:HD13	1:A:422:LYS:HB2	1.91	0.53
1:B:504:TRP:CE2	1:B:508:CYS:SG	3.04	0.51
1:A:480:ALA:HB2	1:A:571:TRP:CD1	2.47	0.50
1:A:297:GLU:OE1	1:A:317:ASN:ND2	2.44	0.50
1:A:182:ILE:HG23	1:A:204:LEU:HG	1.95	0.49
1:A:598:VAL:HG13	1:A:618:ARG:HG3	1.95	0.48
1:B:613:GLY:HA3	1:B:667:ILE:HD12	1.94	0.48
1:A:182:ILE:HG21	1:A:208:GLN:HB2	1.95	0.48
1:A:232:LYS:O	1:A:236:THR:HG23	2.14	0.48
1:A:613:GLY:HA3	1:A:667:ILE:HD12	1.97	0.47
1:A:465:PRO:HG3	1:A:496:PHE:CD1	2.49	0.47
1:A:496:PHE:CD1	1:A:496:PHE:N	2.77	0.47
1:A:504:TRP:CE2	1:A:508:CYS:SG	3.08	0.46
1:B:493:ARG:HH11	1:B:496:PHE:HA	1.81	0.46
1:B:344:THR:HG23	1:B:345:GLN:HG2	1.97	0.46
1:A:176:TYR:O	1:A:179:SER:HB3	2.16	0.46
1:A:298:HIS:O	1:A:302:GLN:HG3	2.17	0.45
1:A:364:MET:O	1:B:287:TRP:NE1	2.28	0.45
1:A:360:LEU:HB3	1:A:450:VAL:HG13	1.99	0.44
1:B:290:ARG:HG3	1:B:320:ILE:HD13	1.98	0.44
1:B:406:HIS:ND1	1:B:411:THR:HG23	2.31	0.44
1:B:604:HIS:CE1	1:B:608:ILE:HG21	2.52	0.44
1:A:598:VAL:HG23	1:A:602:GLN:HB3	1.99	0.44
1:B:373:ILE:HG21	1:B:421:LEU:HD11	1.99	0.44

Continued on next page...

Continued from previous page...

Atom-1	Atom-2	Interatomic distance (Å)	Clash overlap (Å)
1:A:617:LEU:HD13	1:A:656:LEU:HD21	2.01	0.43
1:B:604:HIS:CE1	1:B:608:ILE:CG2	3.01	0.43
1:A:595:LEU:HD23	1:A:598:VAL:HG11	2.01	0.43
1:A:605:ASP:HA	1:A:608:ILE:HG12	2.00	0.43
1:B:614:THR:HA	1:B:668:TYR:O	2.20	0.41
1:B:276:GLN:NE2	1:B:353:ARG:HH11	2.19	0.41
1:B:631:TRP:HE1	1:B:633:PHE:HD2	1.68	0.41
1:B:670:PHE:HA	1:B:671:PRO:HA	1.80	0.41
1:B:421:LEU:HD21	1:B:424:ILE:HD13	2.02	0.41
1:B:321:THR:HA	1:B:324:ILE:HG22	2.03	0.41
1:B:536:LYS:HE2	1:B:573:TRP:CE2	2.56	0.41
1:B:644:LYS:NZ	2:B:801:KOO:C46	2.84	0.41
1:B:504:TRP:CZ2	1:B:508:CYS:SG	3.14	0.40
1:B:331:THR:HB	1:B:355:LEU:HB2	2.04	0.40
1:A:556:SER:CA	1:A:560:ARG:HB2	2.46	0.40

There are no symmetry-related clashes.

5.3 Torsion angles [i](#)

5.3.1 Protein backbone [i](#)

In the following table, the Percentiles column shows the percent Ramachandran outliers of the chain as a percentile score with respect to all X-ray entries followed by that with respect to entries of similar resolution.

The Analysed column shows the number of residues for which the backbone conformation was analysed, and the total number of residues.

Mol	Chain	Analysed	Favoured	Allowed	Outliers	Percentiles
1	A	554/573 (97%)	528 (95%)	21 (4%)	5 (1%)	17 34
1	B	555/573 (97%)	532 (96%)	21 (4%)	2 (0%)	34 56
All	All	1109/1146 (97%)	1060 (96%)	42 (4%)	7 (1%)	25 46

All (7) Ramachandran outliers are listed below:

Mol	Chain	Res	Type
1	A	409	THR
1	B	409	THR
1	A	388	THR

Continued on next page...

Continued from previous page...

Mol	Chain	Res	Type
1	B	495	PRO
1	A	495	PRO
1	A	564	PRO
1	A	451	GLY

5.3.2 Protein sidechains [i](#)

In the following table, the Percentiles column shows the percent sidechain outliers of the chain as a percentile score with respect to all X-ray entries followed by that with respect to entries of similar resolution.

The Analysed column shows the number of residues for which the sidechain conformation was analysed, and the total number of residues.

Mol	Chain	Analysed	Rotameric	Outliers	Percentiles	
1	A	467/512 (91%)	445 (95%)	22 (5%)	26	50
1	B	469/512 (92%)	441 (94%)	28 (6%)	19	37
All	All	936/1024 (91%)	886 (95%)	50 (5%)	22	43

All (50) residues with a non-rotameric sidechain are listed below:

Mol	Chain	Res	Type
1	A	186	PHE
1	A	202	THR
1	A	234	GLN
1	A	315	GLU
1	A	317	ASN
1	A	324	ILE
1	A	353	ARG
1	A	372	THR
1	A	392	CYS
1	A	395	GLU
1	A	400	CYS
1	A	409	THR
1	A	417	ARG
1	A	473	SER
1	A	483	LEU
1	A	502	VAL
1	A	503	LEU
1	A	561	GLU
1	A	584	HIS

Continued on next page...

Continued from previous page...

Mol	Chain	Res	Type
1	A	633	PHE
1	A	635	SER
1	A	692	ASP
1	B	142	LEU
1	B	180	LEU
1	B	202	THR
1	B	220	GLN
1	B	222	LEU
1	B	223[A]	GLN
1	B	223[B]	GLN
1	B	238	GLN
1	B	303	LEU
1	B	324	ILE
1	B	344	THR
1	B	353	ARG
1	B	372	THR
1	B	374	ILE
1	B	382	LEU
1	B	400	CYS
1	B	409	THR
1	B	474	GLN
1	B	502	VAL
1	B	539	ASN
1	B	579	GLU
1	B	584	HIS
1	B	598	VAL
1	B	631	TRP
1	B	633	PHE
1	B	644	LYS
1	B	664	SER
1	B	669	VAL

Sometimes sidechains can be flipped to improve hydrogen bonding and reduce clashes. All (7) such sidechains are listed below:

Mol	Chain	Res	Type
1	A	145	ASN
1	A	234	GLN
1	A	317	ASN
1	A	458	GLN
1	B	276	GLN
1	B	399	ASN
1	B	474	GLN

5.3.3 RNA [i](#)

There are no RNA molecules in this entry.

5.4 Non-standard residues in protein, DNA, RNA chains [i](#)

There are no non-standard protein/DNA/RNA residues in this entry.

5.5 Carbohydrates [i](#)

There are no monosaccharides in this entry.

5.6 Ligand geometry [i](#)

5 ligands are modelled in this entry.

In the following table, the Counts columns list the number of bonds (or angles) for which Mogul statistics could be retrieved, the number of bonds (or angles) that are observed in the model and the number of bonds (or angles) that are defined in the Chemical Component Dictionary. The Link column lists molecule types, if any, to which the group is linked. The Z score for a bond length (or angle) is the number of standard deviations the observed value is removed from the expected value. A bond length (or angle) with $|Z| > 2$ is considered an outlier worth inspection. RMSZ is the root-mean-square of all Z scores of the bond lengths (or angles).

Mol	Type	Chain	Res	Link	Bond lengths			Bond angles		
					Counts	RMSZ	# Z > 2	Counts	RMSZ	# Z > 2
3	PEG	B	803	-	6,6,6	0.28	0	5,5,5	0.21	0
3	PEG	A	802	-	6,6,6	0.16	0	5,5,5	0.08	0
2	KOO	A	801	-	73,81,81	0.43	1 (1%)	91,121,121	0.78	4 (4%)
4	MLI	B	802	-	6,6,6	1.29	0	7,7,7	1.03	0
2	KOO	B	801	-	73,81,81	0.62	2 (2%)	91,121,121	0.95	5 (5%)

In the following table, the Chirals column lists the number of chiral outliers, the number of chiral centers analysed, the number of these observed in the model and the number defined in the Chemical Component Dictionary. Similar counts are reported in the Torsion and Rings columns. '-' means no outliers of that kind were identified.

Mol	Type	Chain	Res	Link	Chirals	Torsions	Rings
3	PEG	B	803	-	-	1/4/4/4	-
3	PEG	A	802	-	-	3/4/4/4	-
2	KOO	A	801	-	-	10/67/109/109	0/8/8/8
4	MLI	B	802	-	-	2/4/4/4	-

Continued on next page...

Continued from previous page...

Mol	Type	Chain	Res	Link	Chirals	Torsions	Rings
2	KOO	B	801	-	-	7/67/109/109	0/8/8/8

All (3) bond length outliers are listed below:

Mol	Chain	Res	Type	Atoms	Z	Observed(Å)	Ideal(Å)
2	B	801	KOO	C-C1	4.24	1.54	1.50
2	A	801	KOO	C5-S	2.01	1.74	1.72
2	B	801	KOO	C5-S	2.00	1.74	1.72

All (9) bond angle outliers are listed below:

Mol	Chain	Res	Type	Atoms	Z	Observed(°)	Ideal(°)
2	B	801	KOO	C51-C1-C	4.75	124.14	119.84
2	A	801	KOO	F-C-F1	-3.29	102.58	106.73
2	A	801	KOO	F-C-C1	-3.24	106.32	110.49
2	B	801	KOO	C2-C1-C	-2.86	116.70	119.44
2	B	801	KOO	F-C-F1	-2.62	103.42	106.73
2	A	801	KOO	P-C-C1	2.35	116.01	108.95
2	B	801	KOO	C23-N3-C22	2.27	110.24	104.39
2	A	801	KOO	C23-N3-C22	2.22	110.12	104.39
2	B	801	KOO	C42-N5-C43	2.01	125.61	123.69

There are no chirality outliers.

All (23) torsion outliers are listed below:

Mol	Chain	Res	Type	Atoms
2	A	801	KOO	C28-C29-N4-C30
2	A	801	KOO	O6-C29-N4-C30
2	A	801	KOO	O6-C29-N4-C31
2	B	801	KOO	F-C-C1-C2
2	B	801	KOO	F-C-C1-C51
2	B	801	KOO	C47-C43-N5-C42
2	A	801	KOO	N4-C31-C32-C33
2	B	801	KOO	C33-C34-C35-C36
3	B	803	PEG	O2-C3-C4-O4
3	A	802	PEG	O2-C3-C4-O4
4	B	802	MLI	C3-C1-C2-O7
2	A	801	KOO	F-C-C1-C2
4	B	802	MLI	C3-C1-C2-O6
2	A	801	KOO	C28-C29-N4-C31
2	A	801	KOO	C31-C32-C33-C34

Continued on next page...

Continued from previous page...

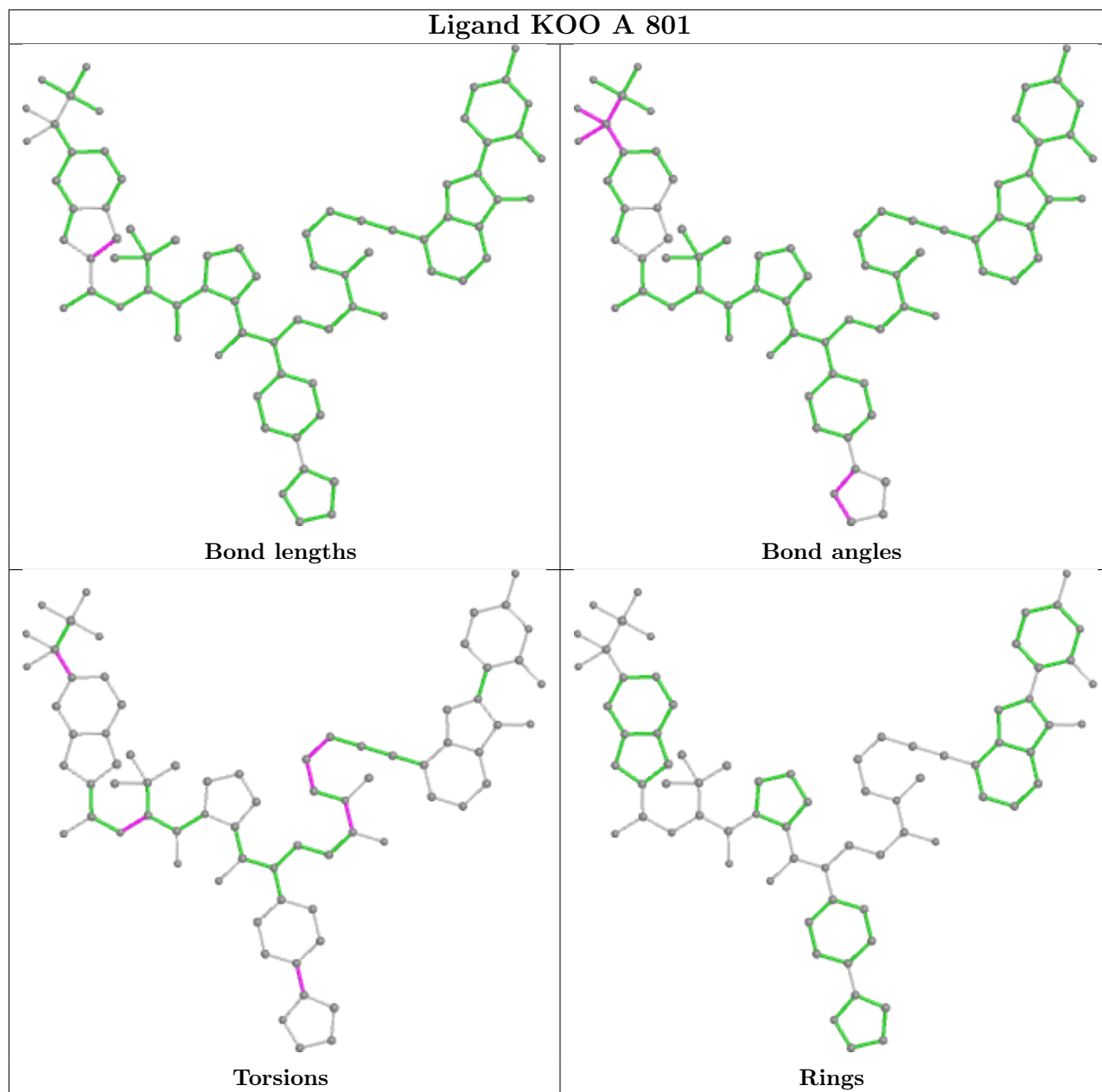
Mol	Chain	Res	Type	Atoms
3	A	802	PEG	C4-C3-O2-C2
2	B	801	KOO	O7-C17-N2-C18
3	A	802	PEG	O1-C1-C2-O2
2	A	801	KOO	F1-C-C1-C2
2	A	801	KOO	C25-C21-C22-N3
2	A	801	KOO	C8-C7-N-C6
2	B	801	KOO	C8-C7-N-C6
2	B	801	KOO	C32-C33-C34-C35

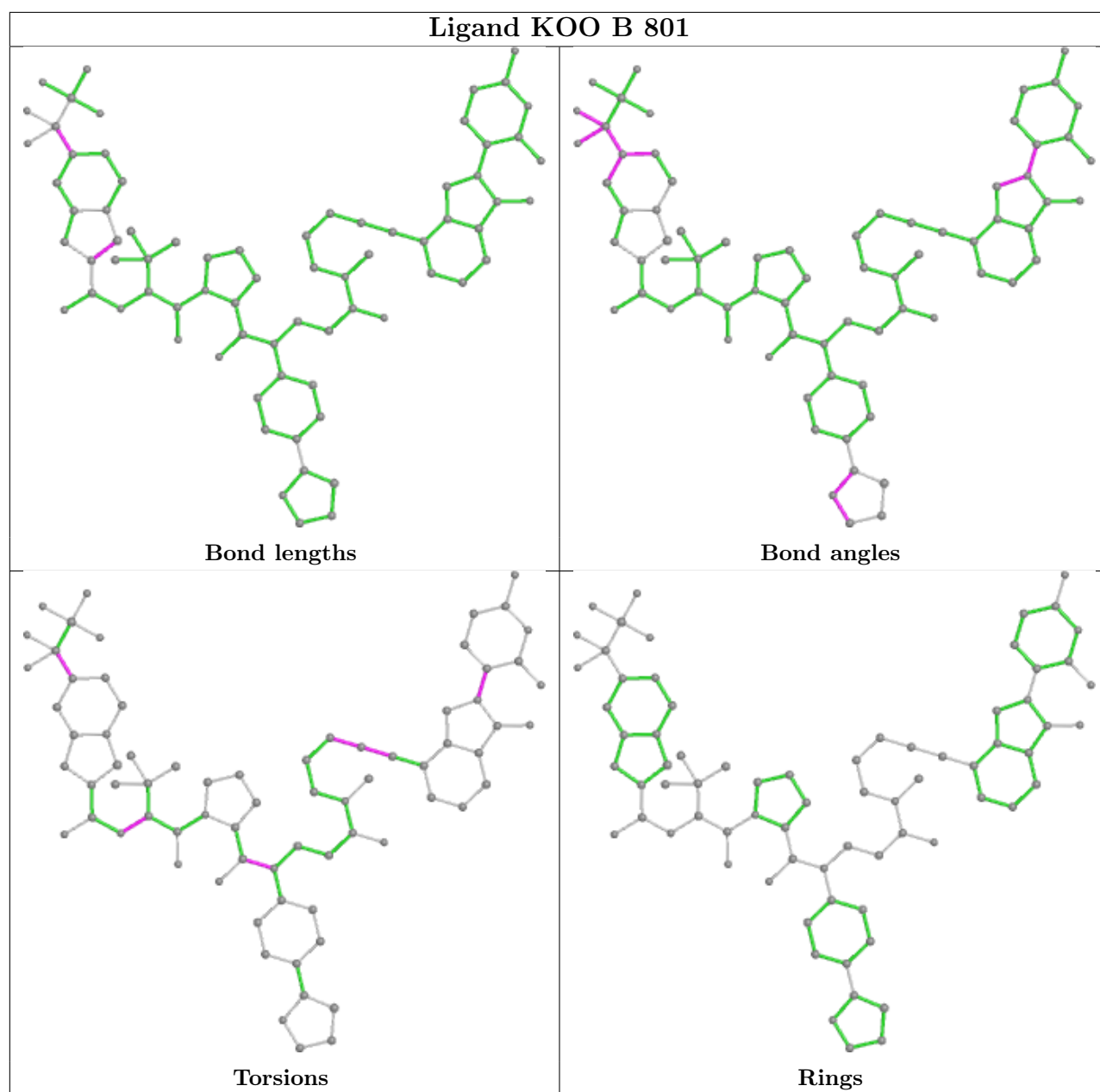
There are no ring outliers.

2 monomers are involved in 2 short contacts:

Mol	Chain	Res	Type	Clashes	Symm-Clashes
2	A	801	KOO	1	0
2	B	801	KOO	1	0

The following is a two-dimensional graphical depiction of Mogul quality analysis of bond lengths, bond angles, torsion angles, and ring geometry for all instances of the Ligand of Interest. In addition, ligands with molecular weight > 250 and outliers as shown on the validation Tables will also be included. For torsion angles, if less than 5% of the Mogul distribution of torsion angles is within 10 degrees of the torsion angle in question, then that torsion angle is considered an outlier. Any bond that is central to one or more torsion angles identified as an outlier by Mogul will be highlighted in the graph. For rings, the root-mean-square deviation (RMSD) between the ring in question and similar rings identified by Mogul is calculated over all ring torsion angles. If the average RMSD is greater than 60 degrees and the minimal RMSD between the ring in question and any Mogul-identified rings is also greater than 60 degrees, then that ring is considered an outlier. The outliers are highlighted in purple. The color gray indicates Mogul did not find sufficient equivalents in the CSD to analyse the geometry.





5.7 Other polymers [\(i\)](#)

There are no such residues in this entry.

5.8 Polymer linkage issues [\(i\)](#)

There are no chain breaks in this entry.

6 Fit of model and data [i](#)

6.1 Protein, DNA and RNA chains [i](#)

In the following table, the column labelled ‘#RSRZ > 2’ contains the number (and percentage) of RSRZ outliers, followed by percent RSRZ outliers for the chain as percentile scores relative to all X-ray entries and entries of similar resolution. The OWAB column contains the minimum, median, 95th percentile and maximum values of the occupancy-weighted average B-factor per residue. The column labelled ‘Q < 0.9’ lists the number of (and percentage) of residues with an average occupancy less than 0.9.

Mol	Chain	Analysed	<RSRZ>	#RSRZ>2	OWAB(Å ²)	Q<0.9
1	A	556/573 (97%)	0.29	5 (0%) 84 83	30, 51, 86, 110	0
1	B	556/573 (97%)	0.37	10 (1%) 68 63	34, 57, 93, 115	0
All	All	1112/1146 (97%)	0.33	15 (1%) 77 74	30, 54, 90, 115	0

All (15) RSRZ outliers are listed below:

Mol	Chain	Res	Type	RSRZ
1	A	388	THR	3.9
1	B	189	LEU	3.7
1	B	193	SER	3.6
1	B	388	THR	3.2
1	B	201	GLU	2.8
1	A	186	PHE	2.8
1	B	191	GLN	2.7
1	B	609	ASN	2.2
1	B	631	TRP	2.2
1	A	190	ALA	2.2
1	A	391	GLU	2.2
1	B	291	GLN	2.1
1	B	389	ARG	2.1
1	B	408	ALA	2.0
1	A	204	LEU	2.0

6.2 Non-standard residues in protein, DNA, RNA chains [i](#)

There are no non-standard protein/DNA/RNA residues in this entry.

6.3 Carbohydrates [i](#)

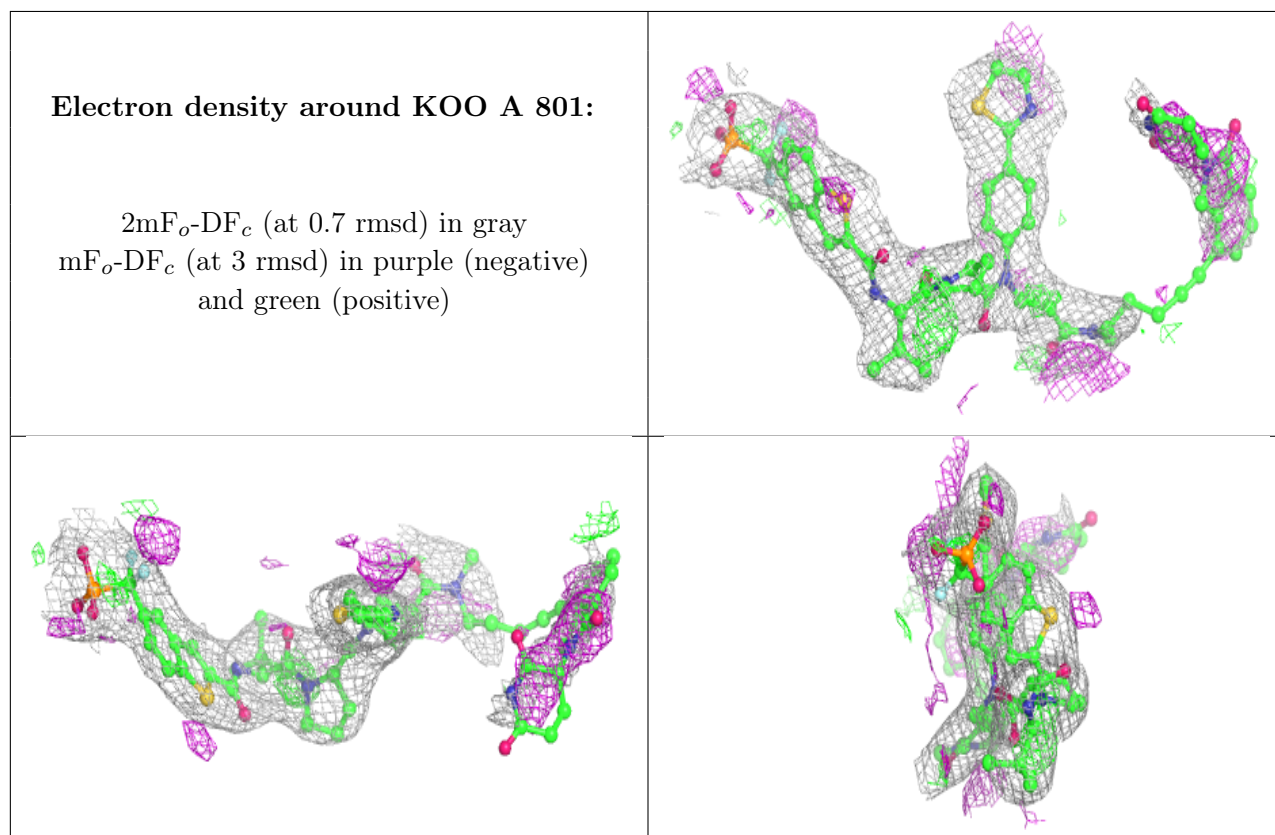
There are no monosaccharides in this entry.

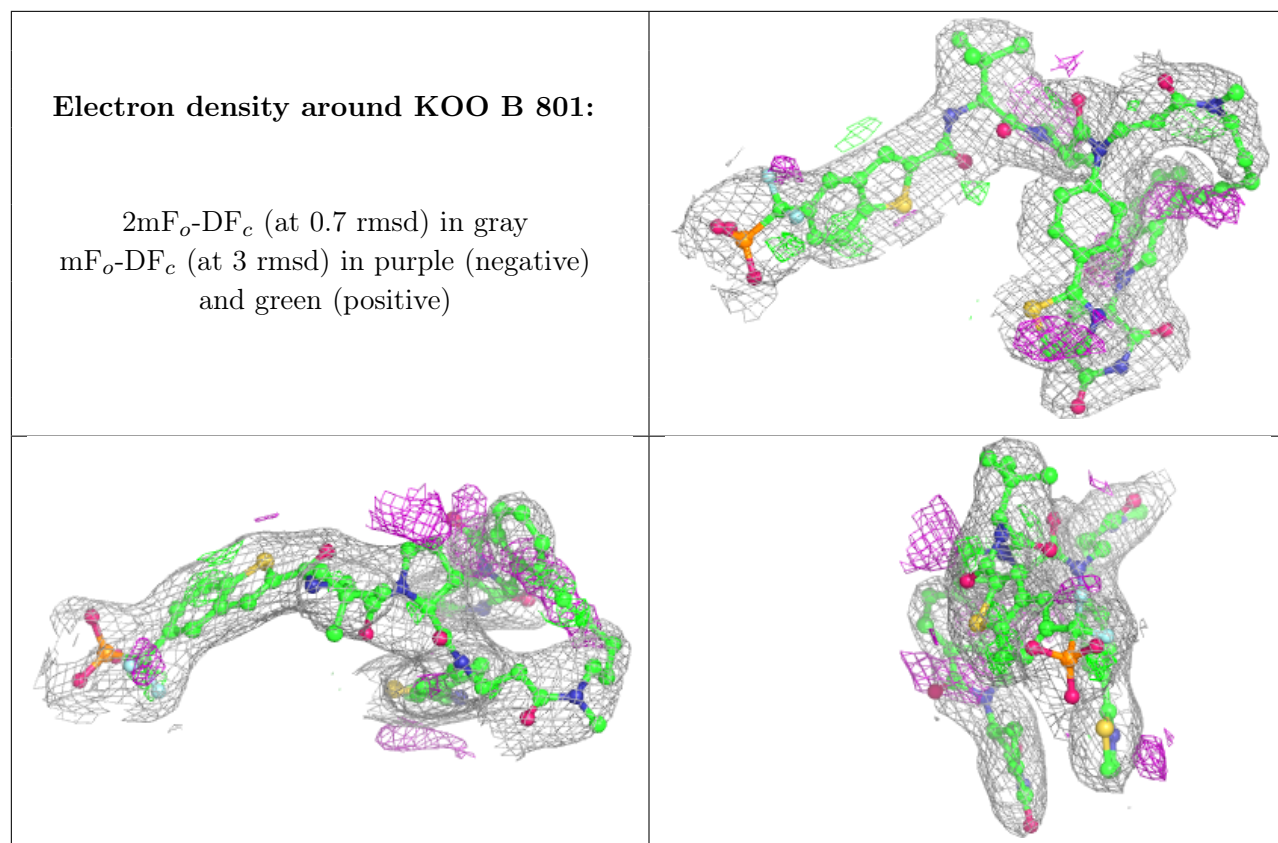
6.4 Ligands [i](#)

In the following table, the Atoms column lists the number of modelled atoms in the group and the number defined in the chemical component dictionary. The B-factors column lists the minimum, median, 95th percentile and maximum values of B factors of atoms in the group. The column labelled 'Q < 0.9' lists the number of atoms with occupancy less than 0.9.

Mol	Type	Chain	Res	Atoms	RSCC	RSR	B-factors(Å ²)	Q<0.9
3	PEG	B	803	7/7	0.89	0.20	38,39,40,40	0
3	PEG	A	802	7/7	0.90	0.19	63,63,63,63	0
2	KOO	A	801	74/74	0.91	0.33	52,57,89,89	0
4	MLI	B	802	7/7	0.92	0.17	52,52,52,53	0
2	KOO	B	801	74/74	0.93	0.27	45,57,69,70	0

The following is a graphical depiction of the model fit to experimental electron density of all instances of the Ligand of Interest. In addition, ligands with molecular weight > 250 and outliers as shown on the geometry validation Tables will also be included. Each fit is shown from different orientation to approximate a three-dimensional view.





6.5 Other polymers [i](#)

There are no such residues in this entry.